

SAMOA BUREAU OF STATISTICS

CONSUMER PRICE INDEX MAY 2023

Key findings:

The Consumer Price Index for May 2023 increased by 12.1 percent compared to the previous month.

- The Food and Non Alcoholic Beverages index increased by 22.4 percent.
- The Restaurants index increased 18.4 percent.
- The Communication index also increased by 14.0 percent.

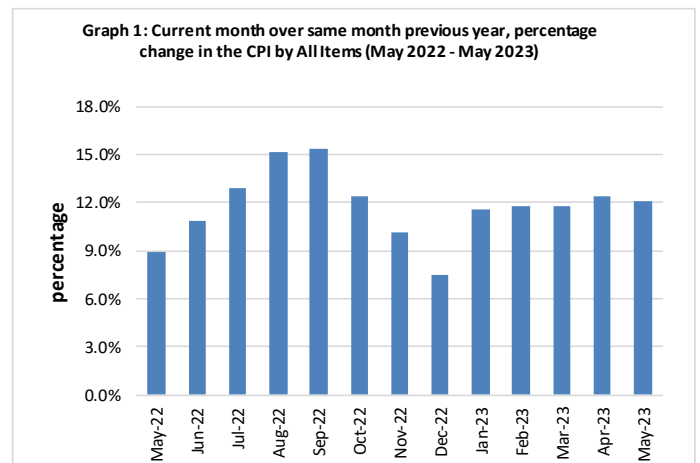
The Average Annual Inflation for the year ended May 2023 was 12.0 percent.

The CPI went down by 0.2 percent from April 2023.

SUMMARY

The Consumer Price Index (CPI) for May 2023 rose 12.1 percent compared to May 2022. This was mainly influenced by the increase in the Imported goods component by 12.5 percent from the same month last year as a result of higher prices for imported food, building materials, household furnishing, laptop and toiletries.

The Local goods component also contributed to the increase when it went up by 11.7 percent on a year-on-year (y-o-y) basis, due to higher prices for local food, meals, phone calls, internet and airline fares. Graph 1 shows the percentage changes over the same month last year in the CPI by all Divisions from May 2022 to May 2023.

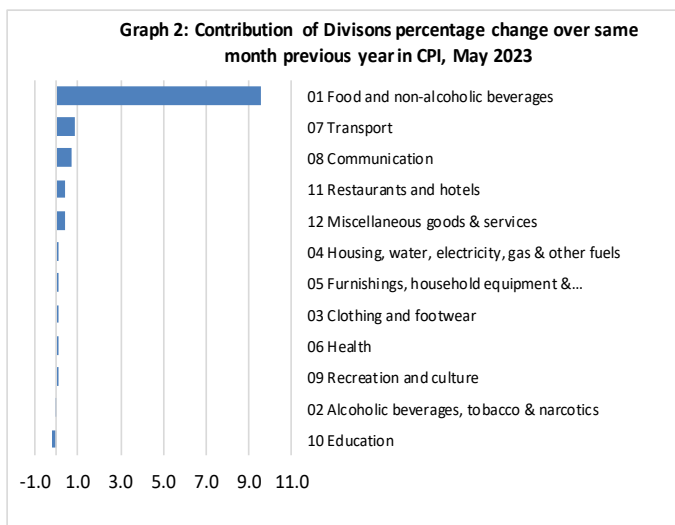


Source : Samoa Bureau of Statistics

Total All Divisions Contribution

As shown in Graph 2, Food & Non Alcoholic Beverages was the largest contributor to the 12.1 percent rise in the CPI in May 2023, with a contribution of 9.6 percentage-points (pp) to the overall increase in May 2023. The most significant drivers of this within the group were chicken leg quarters (up 33.5%), ramen (up 24.0%), fresh fish (up 52.1%), round pancake (up 33.3%), turkey wings (up 39.4%), flour (up 32.5%), onion (up 30.1%), devondale milk (up 35.7%), potatoes (up 50.3%), Chinese cabbage (up 53.0%), cucumber (up 44.0%), tomato (up 74.5%), round cabbage (up 32.3%) and ta'amu (up to 57.3%).

The next largest contributor was Transport with a contribution of 0.9 percentage-point, increasing 5.4% compared to May 2022. The greatest driver of this increase were airline fares increasing 66.0%. Communication also contributed 0.7 percentage point due to the increase of mobile phone calling per minute (up 19.5%) and internet (up 15.8%).



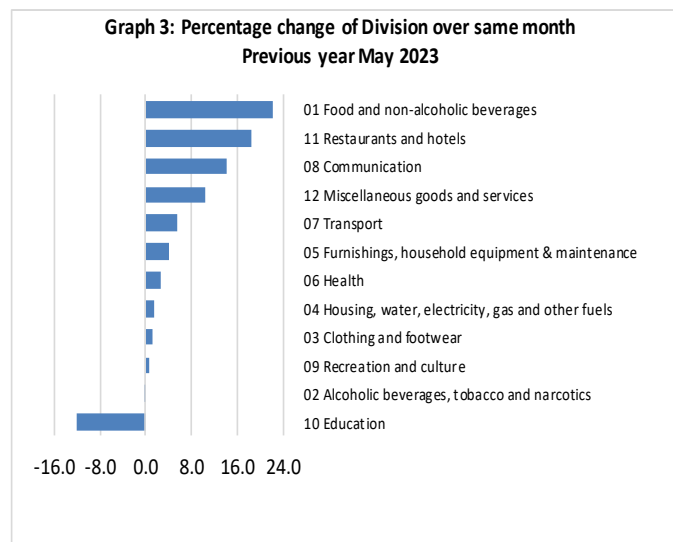
Source : Samoa Bureau of Statistics

Consumer Price Index (% Change)

Graph 3 shows the percentage change for all Divisions (groups) in May 2023 in comparison to May 2022. Food & Non Alcoholic had the largest increase of 22.4% followed by Restaurants, Communication and Miscellaneous Goods & Services which rose 18.4, 14.0, and 10.3 percent respectively.

Other groups such as Transport, Furnishing, Household Equipment & Maintenance, Health, Clothing & Footwear, Housing, Water, Electricity Gas & Other Fuel, Alcoholic Beverages, Tobacco & Narcotics and Recreation & Culture indices recorded increases of 5.4, 4.2, 2.6, 1.3, 1.1, 1.0

and 0.5 percent respectively. On the other hand, Education fell 12.0 percent.



Source : Samoa Bureau of Statistics

Imported Goods Component

The Imported goods component of the CPI registered an increase of 12.5 percent when compared to the same month last year. This increase was mainly due to higher prices recorded for imported food, laptop, cement, toilet soap, tooth paste, safe, clothing chest and kerosene stove.

Local Goods Component

The increase in prices for local food, meals, mobile phone calling per minute, internet and airline fares have resulted in the 11.7 percent increase in the local goods component.

Food and Non-Alcoholic Beverages Index

The increase of 22.4 percent in the Food & Non-Alcoholic Beverages index was influenced by higher prices recorded for chicken leg quarters (up 33.5%), ramen (up 24.0%), fresh fish (up 52.1%), round pancake (up 33.3%), turkey wings (up 39.4%), flour (up 32.5%), onion (up 30.1%), devondale and anchor milk (up 35.7%) and (up 26.7%), potatoes (up 50.3%), Chinese cabbage (up 53.0%), cucumber (up 44.0%), tomato (up 74.5%), round cabbage (up 32.3%) and ta'amu (up to 57.3%).

Restaurants Index

The Restaurants index recorded an increase of 18.4 percent due to the rise in prices for chicken & chips (up 30.1%), steam rice & chicken meal (up 21.2%), curry & chop suey (up 14.3%) and fish & chips (up 13.9%).

Communication Index

The increase in prices for internet data bundle (up 32.0%) and mobile phone calling per minute (up 27.9%) were the major contributors to the 14.0 percent increase in the Communication index.

Miscellaneous Goods and Services Index

The 10.3 percent rise in the Miscellaneous Goods & Services index was due to higher prices recorded for toilet paper (up 12.2%), hair gel (up 12.0%), toilet soap (up 31.0%) and Colgate (up 15.0%).

Transport Index

The increases in prices for airline fares (Apia-Pago-Apia) of 72.2%, (Apia-Auckland-Apia) of 59.7% and prices of used minivan vehicle of 25.5% were the main drivers of the 5.4 percent increase in the Transport index.

Furnishings, Household Equipment & Maintenance Index

The Furnishings, Household Equipment & Maintenance index rose 4.2 percent due to the increase in prices for kerosene stove, glass buffet sideboard (sefe), clothing chest and mosquito coil.

Health Index

The 2.6 percent increase in the Health index was influenced by lower prices recorded for medicine (amoxicillin tablets).

Clothing and Footwear Index

Clothing and Footwear index rose 1.3 percent due to the increases in prices for shirt short sleeve and ie faitaga.

Housing, Water, Electricity, Gas and other Fuels Index

The increase in prices for cement and paint have led to the 1.1 percent increase in the Housing, Water, Electricity, Gas and other Fuels index.

Alcoholic Beverages and Tobacco Index

Higher prices recorded for beer contributed primarily to the 1.0 percent increase in the Alcoholic Beverages and Tobacco index.

Recreation and Culture Index

The 0.5 percent increase in the Recreation and Culture index was mainly driven by the increase in prices for laptop offsetting the decreases in the prices for exercise book and television.

Education

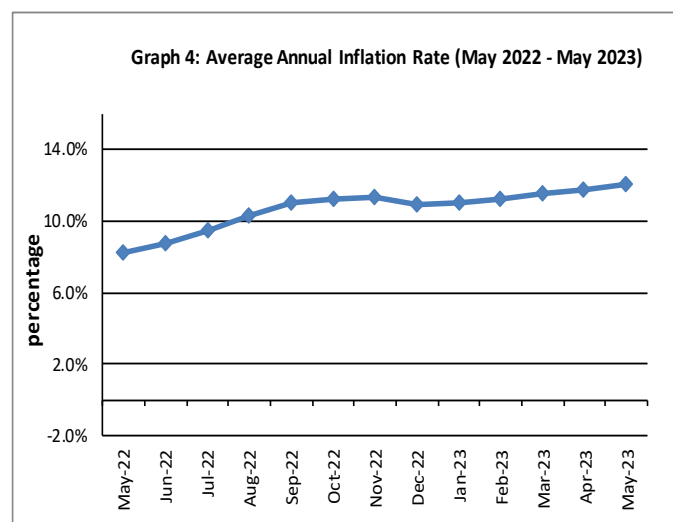
The 12.0 percent decrease in the Education index was a result of lower prices recorded for NUS registration fees (down 62.1%).

Underlying Indices ^{1/}

The All Items Underlying Index for May 2023 registered an increase of 15.2 percent when compared to May 2022. It also increased by 0.1 percent when compared to April 2023. Both the Imported and Local Items Underlying Indices recorded increases of 16.4 and 12.3 percent respectively.

Inflation Rate

The average annual inflation rate for the year ended May 2023 was 12.0 percent. For the twelve months ending May 2022, the inflation rate was 8.2 percent. Presented in Graph 4 is the average annual inflation rate (May 2022 - May 2023).



Source : Samoa Bureau of Statistics

The attached Tables and Graphs provide the user with more detailed analysis.

Technical Notes:

The Consumer Price (CPI) measures the rate of inflation for Samoa. It is designed to measure the change in prices for the goods purchased by households in Samoa. The CPI measures the change in prices by comparing the prices for a basket of goods and services at the collection period with the price for the same goods in a base period.

The basket of goods that is priced is based on the average expenditures of households as recorded in the Household Income and Expenditure Survey (HIES). The HIES survey identifies how much households spend on different items. The more households spend on an item on average, the more important it is to the price index, and the higher the weight in the index.

^{1/} Monthly movements in the 'headline' CPI series can be volatile. This volatility reflects price changes in particular items that may be due, among other factors, to fluctuations in commodity markets and agricultural conditions, policy changes, or seasonal or infrequent price resetting.

Underlying inflation is a measure of inflation that excludes certain items that face volatile price movements. Underlying inflation eliminates products that can have temporary price shocks because these shocks can diverge from the overall trend of inflation and give a false measure of inflation.

SAMOA BUREAU OF STATISTICS

*Economic Statistics Division
FMFM II Building, Level 1
P O Box 1151
Apia, Samoa*

Phone: (685) 62014/62015

Fax: (685) 24675

E-mail: info.stats@sbs.gov.ws

Website: www.sbs.gov.ws

Date of release: 20th June 2023

The next Consumer Price Index will be released on 20th July 2023.

Table 1. CONSUMER PRICE INDEX.

(Base Period : Average Prices February 2016 = 100)

| Group | All Items | Food and Non Alcoholic Beverages | Alcoholic Beverages, Tobacco and Narcotics | Clothing and Footwear | Housing, Water, Electricity, Gas and other Fuels | Furnishings, Household Equipment, and Maintenance | Health | Transport | Communication | Recreation and Culture | Education | Restaurants | Miscellaneous goods and services |
|-------------------------------------|---------------|----------------------------------|--|-----------------------|--|---|------------|--------------|---------------|------------------------|-------------|-------------|----------------------------------|
| <i>Weights</i> | 1000.0 | 403.7 | 128.4 | 21.2 | 119.6 | 30.8 | 4.6 | 148.5 | 51.5 | 6.1 | 19.7 | 22.4 | 43.5 |
| <i>Ave - 2020</i> | 106.6 | 110.4 | 120.0 | 93.5 | 89.6 | 98.1 | 99.2 | 104.4 | 104.2 | 88.5 | 114.9 | 109.4 | 98.8 |
| <i>Ave - 2021</i> | 109.9 | 114.1 | 121.6 | 98.9 | 92.4 | 98.9 | 105.7 | 111.7 | 107.1 | 88.2 | 109.9 | 111.2 | 97.2 |
| <i>Ave - 2022</i> | 122.0 | 131.8 | 122.8 | 108.3 | 93.1 | 105.0 | 101.9 | 131.0 | 124.5 | 91.0 | 109.4 | 126.2 | 102.1 |
| <i>2022</i> | | | | | | | | | | | | | |
| <i>May</i> | 117.3 | 124.5 | 122.6 | 109.4 | 92.4 | 102.5 | 95.1 | 125.4 | 115.8 | 91.8 | 109.4 | 118.3 | 101.4 |
| <i>June</i> | 121.0 | 129.0 | 122.6 | 109.3 | 93.6 | 106.3 | 95.1 | 134.8 | 115.8 | 91.8 | 109.4 | 128.3 | 101.2 |
| <i>July</i> | 125.3 | 135.9 | 123.0 | 108.4 | 93.6 | 106.8 | 104.1 | 137.9 | 133.7 | 90.6 | 109.4 | 128.5 | 102.5 |
| <i>August</i> | 129.9 | 141.4 | 123.4 | 108.7 | 96.0 | 108.1 | 108.8 | 149.9 | 133.7 | 92.3 | 109.4 | 129.2 | 104.7 |
| <i>September</i> | 130.1 | 145.5 | 123.4 | 108.0 | 94.8 | 107.5 | 102.0 | 140.9 | 133.7 | 92.0 | 109.4 | 133.8 | 104.7 |
| <i>October</i> | 127.7 | 141.9 | 123.4 | 108.5 | 94.5 | 108.0 | 98.9 | 135.3 | 133.7 | 88.6 | 109.4 | 133.2 | 105.1 |
| <i>November</i> | 124.6 | 134.3 | 123.4 | 106.9 | 94.6 | 106.6 | 100.0 | 134.9 | 132.0 | 91.8 | 109.4 | 135.1 | 106.0 |
| <i>December</i> | 124.0 | 134.5 | 123.0 | 107.4 | 94.5 | 106.0 | 100.0 | 131.2 | 132.0 | 91.9 | 109.4 | 135.1 | 105.8 |
| <i>2023</i> | | | | | | | | | | | | | |
| <i>January</i> | 128.2 | 144.5 | 123.6 | 107.6 | 94.4 | 106.1 | 100.0 | 131.1 | 132.0 | 93.3 | 109.4 | 135.1 | 106.9 |
| <i>February</i> | 129.0 | 149.5 | 123.9 | 107.3 | 93.7 | 106.8 | 100.0 | 124.8 | 132.0 | 93.3 | 96.3 | 135.1 | 107.2 |
| <i>March</i> | 129.8 | 149.0 | 125.5 | 109.9 | 94.2 | 106.4 | 97.6 | 128.0 | 132.0 | 93.3 | 96.3 | 140.1 | 110.9 |
| <i>April</i> | 131.8 | 154.0 | 123.7 | 110.6 | 94.1 | 106.5 | 97.6 | 129.2 | 132.0 | 95.6 | 96.3 | 140.1 | 111.1 |
| <i>May (P)</i> | 131.5 | 152.3 | 123.8 | 110.8 | 93.4 | 106.7 | 97.6 | 132.2 | 132.0 | 92.3 | 96.3 | 140.1 | 111.8 |
| <u>Percentage Change (P)</u> | | | | | | | | | | | | | |
| <i>May 2023 over May 2022</i> | 12.1% | 22.4% | 1.0% | 1.3% | 1.1% | 4.2% | 2.6% | 5.4% | 14.0% | 0.5% | -12.0% | 18.4% | 10.3% |
| <i>May 2023 over Apr 2023</i> | -0.2% | -1.1% | 0.1% | 0.2% | -0.8% | 0.3% | 0.0% | 2.4% | 0.0% | -3.5% | 0.0% | 0.0% | 0.7% |

Source : Samoa Bureau Statistics

(P) : Provisional figures

Table 2. ALL ITEMS UNDERLYING INDEX
(Base Period : Average Prices February 2016 = 100)

| Group | All Items | Food and Non Alcoholic Beverages | Alcoholic Beverages, Tobacco and Narcotics | Clothing and Footwear | Housing, Water, Electricity, Gas and other Fuels | Furnishings, Household Equipment, and Maintenance | Health | Transport | Communication | Recreation and Culture | Education | Restaurants | Miscellaneous goods and services |
|-------------------------------------|--------------|----------------------------------|--|-----------------------|--|---|------------|-------------|---------------|------------------------|-------------|-------------|----------------------------------|
| <i>Weights</i> | 586.7 | 345.3 | <i>n.a</i> | 21.2 | 24.2 | 30.8 | 3.5 | 26.4 | 51.5 | 5.6 | 12.3 | 22.4 | 43.5 |
| <i>Ave - 2020</i> | 106.6 | 109.9 | | 93.5 | 93.7 | 98.1 | 98.9 | 110.1 | 104.2 | 87.6 | 120.6 | 109.4 | 98.8 |
| <i>Ave - 2021</i> | 110.1 | 114.8 | | 98.9 | 94.5 | 98.9 | 107.5 | 113.6 | 107.1 | 87.3 | 112.7 | 111.2 | 97.2 |
| <i>Ave - 2022</i> | 122.9 | 130.1 | | 108.3 | 110.2 | 105.0 | 102.5 | 115.5 | 124.5 | 90.4 | 111.9 | 126.2 | 102.1 |
| <i>2022</i> | | | | | | | | | | | | | |
| <i>May</i> | 117.3 | 122.8 | | 109.4 | 111.8 | 102.5 | 93.5 | 114.5 | 115.8 | 91.2 | 111.9 | 118.3 | 101.4 |
| <i>June</i> | 120.5 | 127.2 | | 109.3 | 111.5 | 106.3 | 93.5 | 114.5 | 115.8 | 91.2 | 111.9 | 128.3 | 101.2 |
| <i>July</i> | 126.7 | 134.9 | | 108.4 | 111.2 | 106.8 | 105.4 | 114.5 | 133.7 | 89.9 | 111.9 | 128.5 | 102.5 |
| <i>August</i> | 129.6 | 139.1 | | 108.7 | 111.9 | 108.1 | 111.7 | 115.8 | 133.7 | 91.7 | 111.9 | 129.2 | 104.7 |
| <i>September</i> | 132.7 | 144.1 | | 108.0 | 112.6 | 107.5 | 102.6 | 117.1 | 133.7 | 91.4 | 111.9 | 133.8 | 104.7 |
| <i>October</i> | 131.1 | 141.3 | | 108.5 | 112.2 | 108.0 | 98.5 | 117.2 | 133.7 | 87.8 | 111.9 | 133.2 | 105.1 |
| <i>November</i> | 126.0 | 132.9 | | 106.9 | 112.9 | 106.6 | 100.1 | 117.4 | 132.0 | 91.2 | 111.9 | 135.1 | 106.0 |
| <i>December</i> | 124.4 | 130.1 | | 107.4 | 112.4 | 106.0 | 100.1 | 117.4 | 132.0 | 91.3 | 111.9 | 135.1 | 105.8 |
| <i>2023</i> | | | | | | | | | | | | | |
| <i>January</i> | 130.5 | 140.3 | | 107.6 | 112.9 | 106.1 | 100.1 | 117.4 | 132.0 | 92.8 | 111.9 | 135.1 | 106.9 |
| <i>February</i> | 134.4 | 146.8 | | 107.3 | 112.9 | 106.8 | 100.1 | 117.4 | 132.0 | 92.8 | 111.9 | 135.1 | 107.2 |
| <i>March</i> | 134.5 | 146.0 | | 109.9 | 114.3 | 106.4 | 96.9 | 117.7 | 132.0 | 92.8 | 111.9 | 140.1 | 110.9 |
| <i>April</i> | 135.0 | 146.7 | | 110.6 | 114.2 | 106.5 | 96.9 | 119.2 | 132.0 | 95.3 | 111.9 | 140.1 | 111.1 |
| <i>May (P)</i> | 135.2 | 146.5 | | 110.8 | 113.9 | 106.7 | 96.9 | 124.3 | 132.0 | 91.7 | 111.9 | 140.1 | 111.8 |
| <u>Percentage Change (P)</u> | | | | | | | | | | | | | |
| <i>May 2023</i> | | | | | | | | | | | | | |
| <i>over</i> | 15.2% | 19.3% | | 1.3% | 1.9% | 4.2% | 3.5% | 8.6% | 14.0% | 0.5% | 0.0% | 18.4% | 10.3% |
| <i>May 2022</i> | | | | | | | | | | | | | |
| <i>May 2023</i> | | | | | | | | | | | | | |
| <i>over</i> | 0.1% | -0.1% | | 0.2% | -0.3% | 0.3% | 0.0% | 4.3% | 0.0% | -3.8% | 0.0% | 0.0% | 0.7% |
| <i>Apr 2023</i> | | | | | | | | | | | | | |

Source : Samoa Bureau Statistics
(P) : Provisional figures
Note : n.a. Not applicable

Table 3. AVERAGE RETAIL PRICES OF SELECTED COMMODITIES

| Commodities | Wt | Unit | 2022 | | | 2023 | | | May-23 | |
|---|-------|----------|--|-------|-------|-------|-------|---------|--------------------------------|-------------------------|
| | | | Mar | Apr | May | Mar | Apr | May (P) | % chng from prev mnth | %chng from May 22 |
| | | | 01 Food and non-alcoholic beverages | | | | | | | |
| Chicken leg quarters | 62.19 | kg | 4.97 | 5.04 | 4.88 | 6.36 | 6.37 | 6.51 | 2.2% | 33.5% |
| Raw Sugar | 21.27 | kg | 2.99 | 2.99 | 3.01 | 3.59 | 3.58 | 3.57 | -0.2% | 18.7% |
| Bread | 17.20 | loaf | 1.65 | 1.65 | 1.66 | 1.85 | 1.89 | 1.89 | 0.0% | 13.9% |
| Corned Beef Oxford (a) | 15.88 | 340 grms | 8.77 | 8.77 | 9.02 | 10.33 | 10.43 | 10.43 | 0.0% | 15.7% |
| Taro | 15.17 | kg | 3.40 | 3.38 | 3.36 | 3.96 | 4.09 | 4.36 | 6.8% | 29.7% |
| Re-packed medium grain rice | 13.38 | kg | 3.09 | 3.11 | 3.14 | 3.56 | 3.56 | 3.35 | -6.1% | 6.5% |
| Prepacked medium grain rice (a) | 13.38 | 907 grms | 2.77 | 2.80 | 2.80 | 3.05 | 3.05 | 2.83 | -7.1% | 1.2% |
| Bongo | 10.18 | 20 grms | 0.82 | 0.82 | 0.82 | 0.90 | 0.90 | 0.92 | 2.2% | 12.2% |
| Keke Saina Biscuits (a) | 9.21 | pkt 10 | 6.31 | 6.21 | 6.21 | 7.25 | 7.38 | 7.29 | -1.1% | 17.4% |
| Ice Cream (a) | 9.17 | 2 ltr | 16.92 | 16.85 | 16.85 | 19.25 | 19.42 | 19.55 | 0.7% | 16.0% |
| Ramen | 9.00 | 85 gms | 1.07 | 1.08 | 1.11 | 1.37 | 1.38 | 1.38 | 0.0% | 24.0% |
| Fish (Piece) | 7.92 | kg | 28.38 | 25.00 | 23.90 | 31.25 | 60.00 | 37.92 | -36.8% | 58.6% |
| Butter | 7.66 | 454 grms | 16.37 | 16.66 | 16.80 | 18.97 | 18.89 | 18.89 | 0.0% | 12.4% |
| Round Pancake (a) | 7.50 | sml | 0.15 | 0.15 | 0.15 | 0.20 | 0.20 | 0.20 | 0.0% | 33.3% |
| Mutton Flaps | 6.63 | kg | 24.98 | 25.48 | 26.05 | 25.68 | 25.02 | 26.02 | 4.0% | -0.1% |
| Canned fish betw een \$3.00 and \$3.99 N/Oi | 6.37 | 425 grms | 3.40 | 3.40 | 3.23 | 3.37 | 3.37 | 3.49 | 3.6% | 7.9% |
| Canned fish \$4:00 or over N/Oil | 6.37 | 425 grms | 4.64 | 4.72 | 4.70 | 4.86 | 4.89 | 4.74 | -3.1% | 0.9% |
| Canned fish betw een \$3.00 and \$3.99 N/Oi | 6.37 | 425grms | 3.21 | 3.21 | 3.11 | 3.41 | 3.36 | 3.36 | 0.0% | 8.0% |
| Canned fish under \$3.00 in N/Oil | 6.37 | 425 grms | 2.87 | 2.87 | 3.00 | 2.77 | 2.73 | 2.78 | 1.8% | -7.2% |
| Turkey Wings | 6.31 | kg | 12.83 | 12.83 | 12.46 | 16.36 | 17.28 | 17.38 | 0.6% | 39.4% |
| Fish (string) | 5.98 | kg | 12.11 | 10.66 | 12.11 | 14.05 | 17.86 | 16.04 | -10.1% | 32.5% |
| Fish (large) | 5.98 | kg | 19.82 | 19.41 | 20.29 | 23.76 | 21.65 | 33.49 | 54.7% | 65.1% |
| Cooking vegetable oil (a) | 5.89 | ltr | 6.77 | 7.06 | 7.48 | 8.81 | 8.74 | 8.25 | -5.6% | 10.2% |
| Sausage beef | 5.76 | kg | 14.44 | 14.80 | 14.70 | 15.19 | 15.42 | 15.35 | -0.4% | 4.4% |
| Chinese Cabbage | 5.53 | kg | 7.45 | 7.37 | 6.62 | 8.93 | 10.37 | 10.12 | -2.4% | 53.0% |
| Eggs medium size | 5.45 | doz | 7.39 | 7.13 | 7.34 | 8.12 | 8.05 | 7.90 | -1.9% | 7.7% |
| Flour plain w hite | 5.29 | kg | 2.43 | 2.51 | 2.63 | 3.59 | 3.73 | 3.48 | -6.6% | 32.5% |
| Onions | 5.23 | kg | 4.57 | 4.37 | 4.27 | 5.54 | 5.57 | 5.55 | -0.3% | 30.1% |
| Milk Devondale | 5.11 | ltr | 4.08 | 4.10 | 4.14 | 5.77 | 5.75 | 5.62 | -2.3% | 35.7% |
| Soft Drink Coke | 5.07 | 600 mls | 2.98 | 2.97 | 2.98 | 3.58 | 3.72 | 3.80 | 2.2% | 27.2% |
| Soft Drink Taxi | 5.07 | 330 mls | 1.87 | 1.87 | 1.87 | 1.92 | 1.92 | 1.92 | 0.0% | 2.7% |
| Milk Anchor | 4.81 | ltr | 4.07 | 4.06 | 4.08 | 5.39 | 5.17 | 5.17 | 0.0% | 26.7% |
| Salted Beef | 4.72 | kg | 20.68 | 21.13 | 21.63 | 24.36 | 23.45 | 23.24 | -0.9% | 7.5% |
| Canned fish Soifua in Tomato Sauce | 4.47 | 425 grms | 2.59 | 2.48 | 2.48 | 2.51 | 2.48 | 2.59 | 4.5% | 4.5% |
| CCK Coffee | 4.47 | 100 grms | 3.94 | 3.94 | 3.94 | 4.20 | 4.20 | 4.20 | 0.0% | 6.6% |
| Sky Flakes Biscuits | 4.29 | 850 grms | 17.04 | 17.04 | 17.33 | 19.51 | 19.66 | 20.47 | 4.1% | 18.1% |
| Stew ing beef | 4.20 | kg | 16.05 | 16.05 | 16.45 | 17.79 | 17.79 | 18.48 | 3.9% | 12.4% |

| | | | | | | | | | | |
|--------------------------------|------|----------|-------|-------|-------|-------|-------|-------|--------|--------|
| Koko Samoa | 4.09 | cup | 16.73 | 15.42 | 17.22 | 26.52 | 22.25 | 17.11 | -23.1% | -0.6% |
| Corned Beef Pacific | 3.64 | 340 grms | 15.87 | 15.91 | 15.86 | 19.66 | 19.39 | 19.59 | 1.0% | 23.5% |
| Ramen kimchi (bow l) | 3.40 | 86 grms | 2.88 | 2.86 | 2.97 | 3.48 | 3.48 | 3.50 | 0.7% | 18.0% |
| Soy Sauce Mushroom | 3.25 | 750 grms | 3.17 | 3.25 | 3.16 | 3.71 | 3.72 | 3.74 | 0.7% | 18.5% |
| Pork Pig Trotter | 3.10 | kg | 9.02 | 9.08 | 10.25 | 9.64 | 9.71 | 8.74 | -10.0% | -14.7% |
| Corned Beef Palm | 3.01 | 340 grms | 14.62 | 15.58 | 16.80 | 19.07 | 19.12 | 18.91 | -1.1% | 12.6% |
| Ripe Banana (a) | 2.71 | kg | 3.70 | 3.74 | 3.67 | 4.22 | 4.16 | 4.18 | 0.4% | 13.8% |
| Tang pow der (a) | 2.51 | 25 grms | 0.66 | 0.66 | 0.66 | 0.57 | 0.57 | 0.57 | 0.0% | -13.7% |
| Minties Pascall (a) | 2.49 | 200 grms | 12.50 | 12.50 | 12.50 | 16.50 | 16.50 | 16.50 | 0.0% | 32.0% |
| Potatoes | 2.41 | kg | 5.21 | 4.68 | 4.59 | 5.88 | 6.35 | 6.90 | 8.6% | 50.3% |
| Green Banana | 2.29 | kg | 1.39 | 1.49 | 1.44 | 1.40 | 1.58 | 1.85 | 17.2% | 28.6% |
| Apple small | 2.26 | each | 1.58 | 1.82 | 1.77 | 1.80 | 2.09 | 2.06 | -1.1% | 16.6% |
| Mineral Water | 2.25 | bottle | 1.50 | 1.53 | 1.54 | 1.97 | 1.97 | 1.84 | -6.8% | 19.1% |
| Chocolate Cake (a) | 2.15 | sml | 21.20 | 21.20 | 21.50 | 22.40 | 22.40 | 22.40 | 0.0% | 4.2% |
| Cucumbers | 2.12 | kg | 5.00 | 5.21 | 5.29 | 6.57 | 6.97 | 7.62 | 9.2% | 44.0% |
| Instant Nescafe Coffee | 2.02 | 50 grms | 6.82 | 6.90 | 6.90 | 8.72 | 8.72 | 8.12 | -6.9% | 17.7% |
| Mutton Neck | 1.93 | kg | 24.01 | 23.84 | 24.75 | 26.87 | 26.42 | 26.74 | 1.2% | 8.0% |
| Vermicelli Lungken | 1.88 | 454 grms | 3.98 | 4.03 | 4.05 | 4.68 | 4.82 | 4.75 | -1.4% | 17.5% |
| Tomatoes | 1.80 | kg | 15.59 | 16.33 | 16.42 | 23.51 | 25.11 | 28.66 | 14.1% | 74.5% |
| Sausage Pork | 1.68 | kg | 14.26 | 14.22 | 14.27 | 15.80 | 15.51 | 15.38 | -0.8% | 7.8% |
| Bell Tea Bags | 1.62 | 150 grms | 11.36 | 11.36 | 11.36 | 11.40 | 11.39 | 11.34 | -0.4% | -0.2% |
| Samco Tw isties | 1.40 | 20 grms | 0.71 | 0.71 | 0.73 | 0.83 | 0.81 | 0.81 | 0.0% | 11.8% |
| Matured husked Coconuts | 1.30 | kg | 0.90 | 1.02 | 1.01 | 1.18 | 1.25 | 1.13 | -9.8% | 12.3% |
| Matured Un husked Coconuts (a) | 1.30 | kg | 0.64 | 0.67 | 0.71 | 0.67 | 0.63 | 0.77 | 21.9% | 9.2% |
| Taamu | 1.13 | kg | 4.05 | 5.83 | 8.41 | 16.60 | 19.50 | 13.23 | -32.1% | 57.3% |
| Round Cabbage Round | 1.12 | kg | 7.86 | 10.41 | 11.25 | 13.52 | 17.15 | 14.88 | -13.2% | 32.3% |

02 Alcoholic beverages, tobacco and narcotics

| | | | | | | | | | | |
|--------------------------------------|-------|------------|-------|-------|-------|-------|-------|-------|-------|--------|
| Beer Vailima Lager | 37.94 | 355 mls | 3.74 | 3.73 | 3.76 | 3.80 | 3.80 | 3.80 | 0.0% | 1.0% |
| Pall Mall Filter Cigarettes (Red) | 24.29 | 20 rolls | 14.60 | 14.60 | 14.60 | 14.60 | 14.60 | 14.60 | 0.0% | 0.0% |
| Pall Mall Menthol Cigarettes (Green) | 24.29 | 20 rolls | 14.60 | 14.60 | 14.60 | 14.60 | 14.60 | 14.60 | 0.0% | 0.0% |
| Beer Taula (a) | 16.26 | 330 mls | 3.56 | 3.54 | 3.56 | 4.26 | 4.28 | 4.26 | -0.3% | 19.6% |
| Tobacco w infield (a) | 12.64 | 30 grms | 15.00 | 15.00 | 15.00 | 15.00 | 12.50 | 12.50 | 0.0% | -16.7% |
| Vodka Niu Spirit (a) | 3.76 | Niu / 2ltr | 66.82 | 66.82 | 66.82 | 66.82 | 66.82 | 66.78 | 0.0% | 0.0% |
| Whisky Jim Bean Spirit (a) | 3.76 | 1ltr | 94.63 | 94.63 | 89.25 | 94.63 | 94.63 | 98.00 | 3.6% | 9.8% |
| Paper Cigarettes | 3.61 | 50 sheets | 1.70 | 1.70 | 1.70 | 1.70 | 1.86 | 1.90 | 2.2% | 11.8% |
| Samoa kava | 1.82 | pkt | 44.24 | 45.19 | 44.00 | 40.00 | 41.85 | 38.57 | -7.8% | -12.3% |

03 Clothing and footwear

| | | | | | | | | | | |
|---|------|------------|--------|--------|--------|--------|--------|--------|-------|--------|
| Uniform le Faitaga College boys | 4.28 | size 8-10 | 38.33 | 38.33 | 38.33 | 38.33 | 38.33 | 39.00 | 1.7% | 1.7% |
| Uniform Pa'ave (a) | 3.71 | size 7 | 42.67 | 42.67 | 42.67 | 45.00 | 45.00 | 45.00 | 0.0% | 5.5% |
| Jandals soft | 2.48 | 10.5 size | 9.25 | 9.25 | 9.25 | 9.33 | 9.50 | 9.50 | 0.0% | 2.7% |
| Puletasi mamanu palama (a) | 2.35 | medium | 150.00 | 150.00 | 150.00 | 130.00 | 130.00 | 130.00 | 0.0% | -13.3% |
| le solosolo cotton print | 2.22 | 42 inch | 12.02 | 11.87 | 12.58 | 12.40 | 12.90 | 12.90 | 0.0% | 2.5% |
| Cargo shorts (a) | 1.76 | 38 size | 92.25 | 92.25 | 92.25 | 93.00 | 93.00 | 93.00 | 0.0% | 0.8% |
| Shirt short sleeves men Aloha shirt (a) | 1.15 | men / XL | 55.23 | 55.23 | 55.23 | 59.48 | 59.48 | 59.48 | 0.0% | 7.7% |
| Shirt long sleeves men | 1.15 | 16.5 size | 37.24 | 37.24 | 37.13 | 38.38 | 38.38 | 38.38 | 0.0% | 3.4% |
| Shoes Nike Running shoes (a) | 0.82 | size 9 | 262.25 | 262.25 | 258.50 | 224.75 | 224.75 | 209.75 | -6.7% | -18.9% |
| le Faitaga | 0.70 | 36/38 size | 35.43 | 35.43 | 35.80 | 39.24 | 39.06 | 38.31 | -1.9% | 7.0% |
| Woman Nylon Panties | 0.59 | medium | 4.72 | 4.72 | 4.72 | 4.42 | 4.50 | 4.50 | 0.0% | -4.6% |

04 Housing, water, electricity, gas and other fuels

| | | | | | | | | | | |
|-----------------------------|-------|----------|--------|--------|--------|--------|--------|--------|--------|-------|
| Electricity Cashpower | 50.59 | kwh | 0.58 | 0.58 | 0.58 | 0.58 | 0.58 | 0.58 | 0.0% | 0.0% |
| Reservoir treated Water | 28.55 | 15-40 m3 | 1.34 | 1.34 | 1.34 | 1.34 | 1.34 | 1.34 | 0.0% | 0.0% |
| Liquid gas | 15.77 | 9kg | 66.00 | 72.05 | 72.55 | 71.80 | 71.80 | 71.80 | 0.0% | -1.0% |
| Government house Rent | 12.16 | 2 b/room | 650.00 | 650.00 | 650.00 | 680.00 | 680.00 | 680.00 | 0.0% | 4.6% |
| Kerosene | 4.12 | 1ltr | 2.67 | 2.86 | 2.87 | 3.20 | 3.20 | 2.86 | -10.7% | -0.2% |
| Paint High gloss w hite | 3.45 | 4 ltrs | 82.25 | 82.17 | 82.25 | 85.17 | 85.25 | 85.25 | 0.0% | 3.6% |
| Paint Plus 2 plastic w hite | 3.45 | 4 ltrs | 48.80 | 49.20 | 48.20 | 53.40 | 53.40 | 53.00 | -0.7% | 10.0% |
| Cement NZ or Australia | 0.78 | 40 kg | 37.64 | 38.61 | 38.11 | 45.57 | 45.00 | 42.23 | -6.2% | 10.8% |
| Dressed per Timber 2x4 | 0.71 | meter | 10.33 | 10.74 | 10.92 | 11.12 | 11.08 | 11.53 | 4.0% | 5.6% |

05 Furnishings, household equipment and routine household maintenance

| | | | | | | | | | | |
|------------------------------------|------|-------------|---------|---------|---------|---------|---------|---------|-------|-------|
| Washing powder (a) | 6.27 | 200 grms | 2.00 | 2.00 | 2.00 | 2.02 | 2.02 | 2.02 | 0.0% | 1.1% |
| Washing Soap yellow | 5.90 | bar | 3.15 | 3.05 | 3.05 | 3.35 | 3.35 | 3.35 | 0.0% | 9.9% |
| Mosquito coil | 4.36 | 10 coil | 1.35 | 1.38 | 1.38 | 1.55 | 1.53 | 1.53 | 0.0% | 10.9% |
| Mattress single Futon (a) | 3.81 | 4 inch | 156.33 | 152.00 | 152.00 | 147.33 | 151.83 | 155.17 | 2.2% | 2.1% |
| Babysitting live-in (a) | 3.78 | 1week | 142.50 | 142.50 | 142.50 | 142.50 | 142.50 | 142.50 | 0.0% | 0.0% |
| Refridgerator common brand | 2.49 | 331-335 ltr | 2291.32 | 2291.32 | 2291.32 | 2362.52 | 2401.32 | 2401.32 | 0.0% | 4.8% |
| Gold Power washing powder | 1.68 | 180 grms | 1.67 | 1.67 | 1.67 | 1.67 | 1.67 | 1.67 | 0.0% | 0.0% |
| Eveready AA size Batteries | 1.20 | AA 1/4 size | 3.91 | 3.91 | 3.84 | 4.01 | 4.01 | 4.01 | 0.0% | 4.5% |
| Bush knife tramontina | 0.88 | 24 inch | 29.61 | 29.61 | 29.86 | 30.11 | 29.11 | 28.99 | -0.4% | -2.9% |
| Kerosene stove | 0.16 | 2 burner | 112.50 | 112.50 | 112.50 | 137.25 | 137.25 | 137.25 | 0.0% | 22.0% |
| Tumblers Glass basic no design (a) | 0.11 | medium | 17.46 | 17.46 | 17.46 | 15.96 | 15.96 | 15.96 | 0.0% | -8.6% |
| Sefe 3 shelves | 0.11 | 48*48 inch | 645.00 | 645.00 | 645.00 | 760.00 | 760.00 | 760.00 | 0.0% | 17.8% |
| Clothing chest flat top | 0.01 | medium | 550.00 | 550.00 | 550.00 | 757.50 | 757.50 | 757.50 | 0.0% | 37.7% |

06 Health

| | | | | | | | | | | |
|---------------------------------|------|------------|-------|-------|-------|-------|-------|-------|------|-------|
| Amoxicillin 500mg tablets (a) | 2.46 | 20 tablets | 8.20 | 7.77 | 7.10 | 7.73 | 8.23 | 8.23 | 0.0% | 16.0% |
| Hospital Charge | 1.15 | per night | 22.50 | 22.50 | 22.50 | 22.50 | 22.50 | 22.50 | 0.0% | 0.0% |
| Private Doctor Consultation fee | 1.04 | per adult | 30.00 | 30.00 | 30.00 | 30.00 | 30.00 | 30.00 | 0.0% | 0.0% |

07 Transport

| | | | | | | | | | | |
|--|-------|--------------|-----------|-----------|-----------|-----------|-----------|-----------|-------|-------|
| Petrol | 60.80 | 1ltr | 3.11 | 3.33 | 3.34 | 3.20 | 3.26 | 3.33 | 2.3% | -0.3% |
| Taxi Fare P.O to Motootua Hosp | 8.15 | per trip | 4.80 | 4.80 | 4.80 | 4.80 | 4.80 | 4.80 | 0.0% | 0.0% |
| Taxi Fares P.O to Malua | 8.15 | per trip | 31.30 | 31.30 | 31.30 | 31.30 | 31.30 | 31.30 | 0.0% | 0.0% |
| Taxi Fares P.O to Falefa | 8.15 | per trip | 43.20 | 43.20 | 43.20 | 43.20 | 43.20 | 43.20 | 0.0% | 0.0% |
| Air Fares Faleolo-Pago-Faleolo | 6.84 | return trip | 395.00 | 395.00 | 395.00 | 676.02 | 680.00 | 680.00 | 0.0% | 72.2% |
| Air Fares Apia Auckland Apia | 6.77 | 1month | 1257.87 | 1257.87 | 1257.87 | 1483.44 | 1468.81 | 2009.44 | 36.8% | 59.7% |
| Car Registration (private car) | 5.67 | 150+2000 cc | 256.00 | 256.00 | 256.00 | 256.00 | 256.00 | 256.00 | 0.0% | 0.0% |
| Used Car Toyota Corolla (a) | 5.08 | 1500 cc | 23500.00 | 23500.00 | 23500.00 | 23500.00 | 25333.33 | 26666.67 | 5.3% | 13.5% |
| Used Car Toyota Camry (a) | 5.08 | 1500 cc | 18000.00 | 18000.00 | 18000.00 | 18000.00 | 18000.00 | 18000.00 | 0.0% | 0.0% |
| Diesel | 4.83 | 1ltr | 3.07 | 3.29 | 3.30 | 3.56 | 3.56 | 3.29 | -7.5% | -0.2% |
| Bus Fares Apia Motootua Hosp | 3.49 | one adult | 1.30 | 1.30 | 1.30 | 1.30 | 1.30 | 1.20 | -7.7% | -7.7% |
| Bus Fares Apia Malua | 3.49 | one adult | 2.60 | 2.60 | 2.60 | 2.60 | 2.60 | 2.60 | 0.0% | 0.0% |
| Bus Fares Apia Falefa | 3.49 | one adult | 3.70 | 3.70 | 3.70 | 3.70 | 3.70 | 3.70 | 0.0% | 0.0% |
| Labour charge car repair | 3.38 | min charge | 67.00 | 67.00 | 67.00 | 67.00 | 67.00 | 67.00 | 0.0% | 0.0% |
| New Pickup Ford Ranger Double cab (a) | 3.25 | 3200 cc | 94000.00 | 94000.00 | 94000.00 | 94000.00 | 94000.00 | 94000.00 | 0.0% | 0.0% |
| New Pickup Toyota Hilux Double cab (a) | 3.25 | 3200 cc | 105000.00 | 105000.00 | 105000.00 | 105000.00 | 105000.00 | 105000.00 | 0.0% | 0.0% |
| Used Mini van Toyota Noah (a) | 2.42 | 2000 cc | 19600.00 | 19600.00 | 19600.00 | 22000.00 | 21600.00 | 24600.00 | 13.9% | 25.5% |
| Used Mini van Toyota Voxy (a) | 2.42 | 2000 cc | 19600.00 | 19600.00 | 19600.00 | 22000.00 | 21600.00 | 24600.00 | 13.9% | 25.5% |
| Car Tyre | 1.49 | 195/70 R(14) | 203.75 | 203.75 | 203.75 | 212.50 | 212.50 | 212.50 | 0.0% | 4.3% |
| Boat Fares Mulifanua Salelologa | 1.14 | one way | 10.00 | 10.00 | 10.00 | 10.00 | 10.00 | 10.00 | 0.0% | 0.0% |
| Boat Fares Apia Pago Apia | 1.14 | min charge | 120.00 | 120.00 | 120.00 | 120.00 | 120.00 | 120.00 | 0.0% | 0.0% |

08 Communication

| | | | | | | | | | | |
|--|-------|------------|-------|-------|-------|-------|-------|-------|------|-------|
| Calling per minute Rate cell phone (a) | 10.02 | per minute | 0.43 | 0.43 | 0.43 | 0.55 | 0.55 | 0.55 | 0.0% | 27.9% |
| Internet data bundles per mb Rate (a) | 10.02 | per mb | 0.25 | 0.25 | 0.25 | 0.33 | 0.33 | 0.33 | 0.0% | 32.0% |
| Calling per minute Rate cell phone (a) | 10.02 | per minute | 0.44 | 0.44 | 0.44 | 0.49 | 0.49 | 0.49 | 0.0% | 11.4% |
| Internet data bundles per mb Rate (a) | 10.02 | per mb | 0.32 | 0.32 | 0.32 | 0.33 | 0.33 | 0.33 | 0.0% | 3.1% |
| Telephone Rental | 3.87 | 1month | 24.15 | 24.15 | 24.15 | 24.15 | 24.15 | 24.15 | 0.0% | 0.0% |
| Prepaid Internet | 3.06 | 30 mins | 5.80 | 5.80 | 5.80 | 5.80 | 5.80 | 5.80 | 0.0% | 0.0% |
| Telephone call NZ | 1.50 | 3 mins | 2.32 | 2.32 | 2.32 | 2.37 | 2.37 | 2.37 | 0.0% | 2.2% |
| Telephone call USA | 1.50 | 3 mins | 2.97 | 2.97 | 2.97 | 2.97 | 2.97 | 2.97 | 0.0% | 0.0% |
| Telephone call local | 1.50 | 1min | 0.10 | 0.10 | 0.10 | 0.10 | 0.10 | 0.10 | 0.0% | 0.0% |

09 Recreation and culture

| | | | | | | | | | | |
|-----------------------------------|------|---------|---------|---------|---------|---------|---------|---------|--------|-------|
| Television LCD 32" (a) | 2.30 | LCD 32" | 852.83 | 852.83 | 852.83 | 832.83 | 929.33 | 815.83 | -12.2% | -4.3% |
| Exercise Book w arw ick | 1.44 | B4 | 1.62 | 1.62 | 1.62 | 1.47 | 1.47 | 1.47 | 0.0% | -9.3% |
| Laptop (a) | 1.33 | each | 2898.60 | 2898.60 | 2898.60 | 3597.80 | 3503.00 | 3522.80 | 0.6% | 21.5% |
| Weedkiller Graxomone/Agriquat (a) | 0.56 | 1ltr | 46.67 | 46.67 | 46.67 | 51.67 | 51.67 | 51.67 | 0.0% | 10.7% |
| Cinema Admission | 0.41 | ticket | 15.00 | 15.00 | 15.00 | 15.00 | 15.00 | 15.00 | 0.0% | 0.0% |
| New s Paper Samoa Observer | 0.01 | each | 2.50 | 2.50 | 2.50 | 2.50 | 2.50 | 2.50 | 0.0% | 0.0% |
| New s Paper New sline | 0.01 | each | 2.50 | 2.50 | 2.50 | 2.50 | 2.50 | 2.50 | 0.0% | 0.0% |

10 Education

| | | | | | | | | | | |
|--|------|--------------|--------|--------|--------|--------|--------|--------|------|--------|
| Fees Primary PTA/registration fees (a) | 7.23 | Year 6 | 72.50 | 72.50 | 72.50 | 72.50 | 72.50 | 72.50 | 0.0% | 0.0% |
| Fees Secondary PTA/registration fees (a) | 5.11 | Year 10 | 58.00 | 58.00 | 58.00 | 58.00 | 58.00 | 58.00 | 0.0% | 0.0% |
| Fees Tertiary NUS registration School Fees | 3.79 | registration | 322.00 | 322.00 | 322.00 | 122.00 | 122.00 | 122.00 | 0.0% | -62.1% |
| Fees Secondary Y Examination Fees (a) | 3.61 | Y12-13 | 25.50 | 25.50 | 25.50 | 25.50 | 25.50 | 25.50 | 0.0% | 0.0% |

11 Restaurants and hotels

| | | | | | | | | | | |
|-------------------------------|------|--------|-------|-------|-------|-------|-------|-------|------|-------|
| Fish & Chip Meal | 7.79 | 1serve | 10.17 | 10.17 | 10.17 | 11.58 | 11.58 | 11.58 | 0.0% | 13.9% |
| Curry & Chopsuey Meal | 4.87 | 1serve | 4.67 | 4.67 | 4.67 | 5.33 | 5.33 | 5.33 | 0.0% | 14.3% |
| Chicken & Chips Meal (a) | 4.87 | 1serve | 10.43 | 10.43 | 10.43 | 13.57 | 13.57 | 13.57 | 0.0% | 30.1% |
| Steam rice & chicken Meal (a) | 4.87 | 1serve | 5.50 | 5.50 | 5.50 | 6.67 | 6.67 | 6.67 | 0.0% | 21.2% |

12 Miscellaneous goods and services

| | | | | | | | | | | |
|-------------------------------|------|-------------|---------|---------|---------|---------|---------|---------|------|-------|
| Toilet Paper Sofan deluxe ply | 8.52 | 250 sheets | 1.06 | 1.09 | 1.13 | 1.26 | 1.26 | 1.26 | 0.0% | 12.2% |
| Hair Gel | 4.59 | 124 ml | 4.61 | 4.66 | 5.10 | 5.57 | 5.71 | 5.71 | 0.0% | 12.0% |
| Storage of remains (a) | 4.41 | per day | 60.00 | 60.00 | 60.00 | 66.67 | 66.67 | 66.67 | 0.0% | 11.1% |
| Basic Casket (a) | 4.41 | each | 1966.67 | 1966.67 | 1966.67 | 1966.67 | 1966.67 | 1966.67 | 0.0% | 0.0% |
| Standard Embalming (a) | 4.41 | 1person | 1500.00 | 1500.00 | 1500.00 | 1525.00 | 1525.00 | 1525.00 | 0.0% | 1.7% |
| Toilet soap Protex (a) | 4.38 | 90g | 1.94 | 1.95 | 1.95 | 2.05 | 2.04 | 2.05 | 0.9% | 5.1% |
| Diapers Soft Love (a) | 4.19 | 5kg-10kg | 7.46 | 7.51 | 7.51 | 7.56 | 7.50 | 7.50 | 0.0% | -0.2% |
| Toilet soap Lux | 3.87 | 85g | 1.05 | 1.05 | 1.05 | 1.33 | 1.33 | 1.38 | 3.8% | 31.0% |
| Paste Colgate regular flavour | 3.43 | 140g | 4.36 | 4.37 | 4.37 | 4.99 | 4.99 | 5.02 | 0.7% | 15.0% |
| Diapers Huggies | 1.30 | 16kg & over | 39.63 | 39.68 | 39.68 | 39.72 | 39.72 | 41.89 | 5.5% | 5.6% |

Source : Samoa Bureau Statistics

(a) : New commodity from February 2016

(P) : Provisional figures

Note : Please note unit of conversion was in pound's (lb's) but been converted into kilograms (kg)

Table 4. IMPORTED GOODS COMPONENT OF THE CONSUMER PRICE INDEX
(Base Period : Average Prices February 2016 = 100)

| | All Items | Food and Non Alcoholic Beverages | Alcoholic Beverages, Tobacco and Narcotics | Clothing and Footwear | Housing, Water, Electricity, Gas and other Fuels | Furnishings, Household Equipment and Maintenance | Health | Transport | Communication | Recreation and Culture | Education | Restaurants | Miscellaneous goods and services |
|-------------------------------------|--------------|----------------------------------|--|-----------------------|--|--|------------|-------------|---------------|------------------------|------------|-------------|----------------------------------|
| <i>Weights</i> | 494.7 | 269.1 | 23.8 | 15.2 | 28.3 | 26.9 | 2.5 | 88.6 | <i>n.a</i> | 5.6 | <i>n.a</i> | <i>n.a</i> | 34.7 |
| <i>Ave - 2020</i> | 107.9 | 112.2 | 117.1 | 93.2 | 96.0 | 97.7 | 95.8 | 107.4 | | 87.6 | | | 98.0 |
| <i>Ave - 2021</i> | 114.0 | 118.4 | 118.8 | 100.9 | 99.1 | 98.7 | 108.0 | 119.9 | | 87.3 | | | 95.9 |
| <i>Ave - 2022</i> | 131.5 | 136.3 | 119.2 | 114.6 | 121.9 | 105.7 | 100.9 | 149.1 | | 90.4 | | | 102.0 |
| 2022 | | | | | | | | | | | | | |
| May | 125.8 | 128.2 | 118.5 | 115.4 | 119.8 | 102.8 | 88.1 | 143.8 | | 91.2 | | | 101.2 |
| June | 131.1 | 132.3 | 118.4 | 115.3 | 125.1 | 107.1 | 88.1 | 158.2 | | 91.2 | | | 101.0 |
| July | 136.6 | 141.9 | 119.1 | 115.4 | 124.9 | 107.7 | 105.0 | 158.2 | | 89.9 | | | 102.5 |
| August | 143.6 | 147.3 | 119.1 | 115.8 | 132.6 | 109.2 | 114.0 | 176.4 | | 91.7 | | | 105.3 |
| September | 143.3 | 153.2 | 119.1 | 115.1 | 127.4 | 108.4 | 101.1 | 159.3 | | 91.4 | | | 105.4 |
| October | 139.8 | 149.4 | 119.2 | 115.4 | 126.2 | 109.0 | 95.3 | 152.0 | | 87.8 | | | 105.8 |
| November | 133.8 | 138.2 | 119.2 | 114.1 | 126.8 | 107.4 | 97.4 | 152.0 | | 91.2 | | | 106.9 |
| December | 130.7 | 134.4 | 119.3 | 114.2 | 126.2 | 106.8 | 97.4 | 147.0 | | 91.3 | | | 106.7 |
| 2023 | | | | | | | | | | | | | |
| January | 137.9 | 147.5 | 119.6 | 114.3 | 126.0 | 106.9 | 97.4 | 146.6 | | 92.8 | | | 108.0 |
| February | 140.2 | 155.5 | 119.5 | 113.8 | 122.8 | 107.6 | 97.4 | 135.6 | | 92.8 | | | 108.5 |
| March | 140.7 | 154.0 | 119.9 | 116.6 | 124.8 | 107.2 | 92.9 | 141.2 | | 92.8 | | | 111.9 |
| April | 141.1 | 154.6 | 109.9 | 117.3 | 124.7 | 107.3 | 92.9 | 143.3 | | 95.3 | | | 112.1 |
| May (P) | 141.5 | 154.5 | 111.0 | 117.5 | 121.5 | 107.6 | 92.9 | 146.4 | | 91.7 | | | 113.1 |
| <u>Percentage Change (P)</u> | | | | | | | | | | | | | |
| May 2023 over May 2022 | 12.5% | 20.5% | -6.4% | 1.9% | 1.4% | 4.7% | 5.4% | 1.8% | | 0.5% | | | 11.8% |
| May 2023 over Apr 2023 | 0.3% | -0.1% | 1.0% | 0.2% | -2.6% | 0.3% | 0.0% | 2.2% | | -3.8% | | | 0.9% |

: Samoa Bureau Statistics

(P) : Provisional figures

Note : n.a. Not applicable

Table 5. IMPORTED ITEMS UNDERLYING INDEX
(Base Period : Average Prices February 2016 = 100)

| | All Items | Food and Non Alcoholic Beverages | Alcoholic Beverages, Tobacco and Narcotics | Clothing and Footwear | Housing, Water , Electricity, Gas and other Fuels | Furnishings, Household Equipment and Maintenance | Health | Transport | Communication | Recreation and Culture | Education | Restaurants | Miscellaneous goods and services |
|-------------------------------------|--------------|----------------------------------|--|-----------------------|---|--|------------|-------------|---------------|------------------------|------------|-------------|----------------------------------|
| Weights | 401.2 | 269.1 | n.a | 15.2 | 24.2 | 26.9 | 2.5 | 23.0 | n.a | 5.6 | n.a | n.a | 34.7 |
| Ave - 2020 | 107.6 | 112.2 | | 93.2 | 93.7 | 97.7 | 95.8 | 110.4 | | 87.6 | | | 98.0 |
| Ave - 2021 | 112.3 | 118.4 | | 100.9 | 94.5 | 98.7 | 108.0 | 114.4 | | 87.3 | | | 95.9 |
| Ave - 2022 | 126.8 | 136.3 | | 114.6 | 110.2 | 105.7 | 100.9 | 115.7 | | 90.4 | | | 102.0 |
| 2022 | | | | | | | | | | | | | |
| May | 121.2 | 128.2 | | 115.4 | 111.8 | 102.8 | 88.1 | 114.6 | | 91.2 | | | 101.2 |
| June | 124.1 | 132.3 | | 115.3 | 111.5 | 107.1 | 88.1 | 114.6 | | 91.2 | | | 101.0 |
| July | 130.9 | 141.9 | | 115.4 | 111.2 | 107.7 | 105.0 | 114.6 | | 89.9 | | | 102.5 |
| August | 135.0 | 147.3 | | 115.8 | 111.9 | 109.2 | 114.0 | 116.1 | | 91.7 | | | 105.3 |
| September | 139.0 | 153.2 | | 115.1 | 112.6 | 108.4 | 101.1 | 117.5 | | 91.4 | | | 105.4 |
| October | 136.4 | 149.4 | | 115.4 | 112.2 | 109.0 | 95.3 | 117.6 | | 87.8 | | | 105.8 |
| November | 128.9 | 138.2 | | 114.1 | 112.9 | 107.4 | 97.4 | 117.8 | | 91.2 | | | 106.9 |
| December | 126.2 | 134.4 | | 114.2 | 112.4 | 106.8 | 97.4 | 117.8 | | 91.3 | | | 106.7 |
| 2023 | | | | | | | | | | | | | |
| January | 135.2 | 147.5 | | 114.3 | 112.9 | 106.9 | 97.4 | 117.8 | | 92.8 | | | 108.0 |
| February | 140.7 | 155.5 | | 113.8 | 112.9 | 107.6 | 97.4 | 117.8 | | 92.8 | | | 108.5 |
| March | 140.1 | 154.0 | | 116.6 | 114.3 | 107.2 | 92.9 | 118.2 | | 92.8 | | | 111.9 |
| April | 140.7 | 154.6 | | 117.3 | 114.2 | 107.3 | 92.9 | 119.9 | | 95.3 | | | 112.1 |
| May (P) | 141.0 | 154.5 | | 117.5 | 113.9 | 107.6 | 92.9 | 125.8 | | 91.7 | | | 113.1 |
| <u>Percentage Change (P)</u> | | | | | | | | | | | | | |
| May 2023 | | | | | | | | | | | | | |
| over | 16.4% | 20.5% | | 1.9% | 1.9% | 4.7% | 5.4% | 9.8% | | 0.5% | | | 11.8% |
| May 2022 | | | | | | | | | | | | | |
| May 2023 | | | | | | | | | | | | | |
| over | 0.2% | -0.1% | | 0.2% | -0.3% | 0.3% | 0.0% | 4.9% | | -3.8% | | | 0.9% |
| Apr 2023 | | | | | | | | | | | | | |

Source : Samoa Bureau Statistics

(P) : Provisional figures

Note : n.a. Not applicable

Table 6. LOCAL GOODS COMPONENT OF THE CONSUMER PRICE INDEX

(Base Period : Average Prices February 2016 = 100)

| Group | All Items | Food and Non Alcoholic Beverages | Alcoholic Beverages, Tobacco and Narcotics | Clothing and Footwear | Housing, Water, Electricity, Gas and other Fuels | Furnishings, Household Equipment and Maintenance | Health | Transport | Communication | Recreation and Culture | Education | Restaurants | Miscellaneous goods and services |
|-------------------------------------|--------------|----------------------------------|--|-----------------------|--|--|------------|-------------|---------------|------------------------|-------------|-------------|----------------------------------|
| Weights | 505.3 | 134.6 | 104.6 | 6.0 | 91.3 | 3.9 | 2.2 | 59.9 | 51.5 | 0.4 | 19.7 | 22.4 | 8.8 |
| Ave - 2020 | 105.3 | 106.8 | 120.7 | 94.2 | 87.6 | 100.3 | 103.0 | 100.1 | 104.2 | 100.0 | 114.9 | 109.4 | 102.3 |
| Ave - 2021 | 105.9 | 105.6 | 122.2 | 93.8 | 90.3 | 100.3 | 103.0 | 99.6 | 107.1 | 100.0 | 109.9 | 111.2 | 102.3 |
| Ave - 2022 | 112.6 | 122.8 | 123.6 | 92.1 | 84.2 | 100.6 | 103.0 | 104.3 | 124.5 | 100.0 | 109.4 | 126.2 | 102.3 |
| 2022 | | | | | | | | | | | | | |
| April | 108.6 | 115.8 | 123.1 | 94.2 | 83.9 | 100.5 | 103.0 | 98.2 | 115.8 | 100.0 | 109.4 | 118.3 | 102.3 |
| May | 109.0 | 116.9 | 123.5 | 94.2 | 83.9 | 100.5 | 103.0 | 98.2 | 115.8 | 100.0 | 109.4 | 118.3 | 102.3 |
| June | 111.2 | 122.4 | 123.6 | 94.2 | 83.9 | 100.5 | 103.0 | 100.1 | 115.8 | 100.0 | 109.4 | 128.3 | 102.3 |
| July | 114.4 | 123.9 | 123.9 | 90.4 | 83.9 | 100.6 | 103.0 | 107.9 | 133.7 | 100.0 | 109.4 | 128.5 | 102.3 |
| August | 116.4 | 129.5 | 124.4 | 90.6 | 84.7 | 100.6 | 103.0 | 110.6 | 133.7 | 100.0 | 109.4 | 129.2 | 102.3 |
| September | 117.1 | 129.9 | 124.4 | 89.8 | 84.7 | 100.8 | 103.0 | 113.7 | 133.7 | 100.0 | 109.4 | 133.8 | 102.3 |
| October | 115.9 | 126.7 | 124.3 | 91.1 | 84.7 | 100.9 | 103.0 | 110.6 | 133.7 | 100.0 | 109.4 | 133.2 | 102.3 |
| November | 115.5 | 126.3 | 124.4 | 88.3 | 84.7 | 101.0 | 103.0 | 109.7 | 132.0 | 100.0 | 109.4 | 135.1 | 102.3 |
| December | 117.5 | 134.6 | 123.9 | 90.1 | 84.7 | 101.0 | 103.0 | 107.8 | 132.0 | 100.0 | 109.4 | 135.1 | 102.3 |
| 2023 | | | | | | | | | | | | | |
| January | 118.6 | 138.4 | 124.5 | 90.7 | 84.7 | 100.9 | 103.0 | 108.2 | 132.0 | 100.0 | 109.4 | 135.1 | 102.3 |
| February | 118.0 | 137.5 | 124.9 | 90.7 | 84.7 | 100.9 | 103.0 | 108.9 | 132.0 | 100.0 | 96.3 | 135.1 | 102.3 |
| March | 119.1 | 139.0 | 126.7 | 93.0 | 84.7 | 101.1 | 103.0 | 108.4 | 132.0 | 100.0 | 96.3 | 140.1 | 107.0 |
| April | 122.8 | 152.7 | 126.8 | 93.6 | 84.7 | 101.1 | 103.0 | 108.4 | 132.0 | 100.0 | 96.3 | 140.1 | 107.0 |
| May (P) | 121.8 | 147.9 | 126.7 | 93.6 | 84.7 | 101.1 | 103.0 | 111.3 | 132.0 | 100.0 | 96.3 | 140.1 | 107.0 |
| <u>Percentage Change (P)</u> | | | | | | | | | | | | | |
| May 2023 over May 2022 | 11.7% | 26.5% | 2.6% | -0.6% | 1.0% | 0.6% | 0.0% | 13.3% | 14.0% | 0.0% | -12.0% | 18.4% | 4.6% |
| May 2023 over Apr 2023 | -0.8% | -3.2% | -0.1% | 0.0% | 0.0% | 0.0% | 0.0% | 2.7% | 0.0% | 0.0% | 0.0% | 0.0% | 0.0% |

Source : Samoa Bureau Statistics

(P) : Provisional figures

Table 7. LOCAL ITEMS UNDERLYING INDEX

(Base Period : Average Prices February 2016 = 100)

| Group | All Items | Food and Non Alcoholic Beverages | Alcoholic Beverages, Tobacco and Narcotics | Clothing and Footwear | Housing, Water , Electricity, Gas and other Fuels | Furnishings, Household Equipment and Maintenance | Health | Transport | Communication | Recreation and Culture | Education | Restaurants | Miscellaneous goods and services |
|-------------------------------------|--------------|----------------------------------|--|-----------------------|---|--|------------|------------|---------------|------------------------|-------------|-------------|----------------------------------|
| Weights | 185.5 | 76.1 | n.a | 6.0 | n.a | 3.9 | 1.0 | 3.4 | 51.5 | n.a | 12.3 | 22.4 | 8.8 |
| Ave - 2020 | 104.6 | 101.9 | | 94.2 | | 100.3 | 106.3 | 108.6 | 104.2 | | 120.6 | 109.4 | 102.3 |
| Ave - 2021 | 105.1 | 102.1 | | 93.8 | | 100.3 | 106.3 | 108.6 | 107.1 | | 112.7 | 111.2 | 102.3 |
| Ave - 2022 | 114.3 | 108.1 | | 92.1 | | 100.6 | 106.3 | 114.4 | 124.5 | | 111.9 | 126.2 | 102.3 |
| 2022 | | | | | | | | | | | | | |
| April | 108.7 | 102.6 | | 94.2 | | 100.5 | 106.3 | 114.4 | 115.8 | | 111.9 | 118.3 | 102.3 |
| May | 109.0 | 103.5 | | 94.2 | | 100.5 | 106.3 | 114.4 | 115.8 | | 111.9 | 118.3 | 102.3 |
| June | 112.7 | 109.5 | | 94.2 | | 100.5 | 106.3 | 114.4 | 115.8 | | 111.9 | 128.3 | 102.3 |
| July | 117.8 | 109.9 | | 90.4 | | 100.6 | 106.3 | 114.4 | 133.7 | | 111.9 | 128.5 | 102.3 |
| August | 117.9 | 109.9 | | 90.6 | | 100.6 | 106.3 | 114.4 | 133.7 | | 111.9 | 129.2 | 102.3 |
| September | 119.2 | 111.8 | | 89.8 | | 100.8 | 106.3 | 114.4 | 133.7 | | 111.9 | 133.8 | 102.3 |
| October | 119.5 | 112.7 | | 91.1 | | 100.9 | 106.3 | 114.4 | 133.7 | | 111.9 | 133.2 | 102.3 |
| November | 119.8 | 114.2 | | 88.3 | | 101.0 | 106.3 | 114.4 | 132.0 | | 111.9 | 135.1 | 102.3 |
| December | 120.3 | 115.2 | | 90.1 | | 101.0 | 106.3 | 114.4 | 132.0 | | 111.9 | 135.1 | 102.3 |
| 2023 | | | | | | | | | | | | | |
| January | 120.2 | 114.9 | | 90.7 | | 100.9 | 106.3 | 114.4 | 132.0 | | 111.9 | 135.1 | 102.3 |
| February | 120.7 | 116.3 | | 90.7 | | 100.9 | 106.3 | 114.4 | 132.0 | | 111.9 | 135.1 | 102.3 |
| March | 122.3 | 117.9 | | 93.0 | | 101.1 | 106.3 | 114.4 | 132.0 | | 111.9 | 140.1 | 107.0 |
| April | 122.6 | 118.6 | | 93.6 | | 101.1 | 106.3 | 114.4 | 132.0 | | 111.9 | 140.1 | 107.0 |
| May (P) | 122.4 | 118.2 | | 93.6 | | 101.1 | 106.3 | 114.4 | 132.0 | | 111.9 | 140.1 | 107.0 |
| <u>Percentage Change (P)</u> | | | | | | | | | | | | | |
| May 2023 over May 2022 | 12.3% | 14.3% | | -0.6% | | 0.6% | 0.0% | 0.0% | 14.0% | | 0.0% | 18.4% | 4.6% |
| May 2023 over Apr 2023 | -0.1% | -0.3% | | 0.0% | | 0.0% | 0.0% | 0.0% | 0.0% | | 0.0% | 0.0% | 0.0% |

Source : Samoa Bureau Statistics

(P) : Provisional figures

Note : n.a. Not applicable

Table 8. CONSUMER PRICE INDEX (AVERAGE ANNUAL INFLATION RATE).**(Base Period : Average Prices February 2016 = 100)**

| | All Items | Food and Non Alcoholic Beverages | Alcoholic Beverages, Tobacco and Narcotics | Clothing and Footwear | Housing, Water, Electricity, Gas and other Fuels | Furnishings, Household Equipment, and Maintenance | Health | Transport | Communication | Recreation and Culture | Education | Restaurants | Miscellaneous goods and services |
|----------------|---------------|----------------------------------|--|-----------------------|--|---|------------|--------------|---------------|------------------------|-------------|-------------|----------------------------------|
| Weights | 1000.0 | 403.7 | 128.4 | 21.2 | 119.6 | 30.8 | 4.6 | 148.5 | 51.5 | 6.1 | 19.7 | 22.4 | 43.5 |
| 2019 | 1.0 | 1.0 | 4.1 | -1.6 | 4.4 | -1.6 | 3.1 | -3.2 | 0.9 | -4.2 | 2.8 | 4.4 | 0.0 |
| 2020 | -1.6 | -1.5 | 2.7 | -0.3 | -5.7 | 1.8 | -0.9 | -6.1 | 0.0 | -0.3 | 1.2 | 5.9 | 1.0 |
| 2021 | 3.1 | 3.4 | 1.3 | 5.8 | 3.1 | 0.9 | 6.5 | 7.0 | 2.8 | -0.3 | -4.3 | 1.7 | -1.6 |
| 2022 | 11.0 | 15.5 | 1.0 | 9.5 | 0.8 | 6.2 | -3.6 | 17.3 | 16.2 | 3.2 | -0.4 | 13.5 | 5.0 |
| 2022 | | | | | | | | | | | | | |
| January | 4.5 | 5.3 | 1.2 | 6.9 | 5.3 | 0.7 | 6.5 | 9.2 | 3.7 | 0.1 | -4.7 | 2.0 | -1.9 |
| February | 5.7 | 7.0 | 1.1 | 8.4 | 6.6 | 1.0 | 6.5 | 11.0 | 4.7 | 0.4 | -4.3 | 2.4 | -1.9 |
| March | 6.7 | 8.5 | 1.0 | 10.0 | 7.8 | 1.2 | 5.8 | 12.5 | 5.6 | 1.1 | -4.0 | 2.7 | -1.7 |
| April | 7.6 | 10.0 | 0.9 | 11.5 | 7.8 | 1.3 | 5.1 | 13.8 | 6.5 | 1.6 | -3.6 | 3.0 | -1.4 |
| May | 8.2 | 11.0 | 0.8 | 13.1 | 7.9 | 1.7 | 3.8 | 14.1 | 7.4 | 1.9 | -3.2 | 3.4 | -0.9 |
| June | 8.8 | 12.2 | 0.6 | 14.5 | 6.3 | 2.4 | 2.4 | 14.6 | 8.4 | 2.0 | -2.8 | 4.5 | -0.1 |
| July | 9.5 | 13.6 | 0.7 | 13.6 | 4.7 | 3.1 | 1.7 | 15.3 | 10.7 | 2.1 | -2.4 | 5.6 | 0.7 |
| August | 10.3 | 14.9 | 0.8 | 12.9 | 3.2 | 3.8 | 1.0 | 16.9 | 13.1 | 2.5 | -2.0 | 6.7 | 1.5 |
| September | 11.0 | 16.2 | 0.9 | 12.1 | 1.9 | 4.4 | -0.1 | 17.5 | 15.5 | 2.9 | -1.6 | 8.4 | 2.3 |
| October | 11.3 | 16.8 | 0.9 | 11.3 | 0.1 | 5.1 | -1.5 | 17.9 | 15.8 | 2.8 | -1.2 | 10.0 | 3.2 |
| November | 11.3 | 16.3 | 1.0 | 10.4 | 0.6 | 5.7 | -2.7 | 18.2 | 16.0 | 3.0 | -0.8 | 11.8 | 4.1 |
| December | 11.0 | 15.5 | 1.0 | 9.5 | 0.8 | 6.2 | -3.6 | 17.3 | 16.2 | 3.2 | -0.4 | 13.5 | 5.0 |
| 2023 | | | | | | | | | | | | | |
| January | 11.0 | 15.6 | 1.1 | 8.4 | 0.5 | 6.5 | -4.4 | 16.7 | 16.4 | 3.4 | 0.0 | 14.1 | 6.0 |
| February | 11.2 | 16.2 | 1.2 | 6.9 | 0.6 | 6.6 | -5.5 | 16.2 | 16.6 | 3.7 | -1.0 | 14.8 | 6.8 |
| March | 11.5 | 16.9 | 1.3 | 5.5 | 0.6 | 6.5 | -5.6 | 15.6 | 16.8 | 3.4 | -2.0 | 15.7 | 7.7 |
| April | 11.7 | 17.7 | 1.4 | 4.3 | 0.5 | 6.5 | -5.4 | 14.6 | 17.0 | 3.2 | -3.0 | 16.7 | 8.4 |
| May (P) | 12.0 | 18.5 | 1.4 | 3.0 | 0.3 | 6.6 | -4.5 | 13.9 | 17.2 | 3.0 | -4.0 | 17.7 | 9.0 |

Source : Samoa Bureau Statistics

(P) : Provisional figures

Table 9 Consumer Price Index (Percentage change and Average Annual Inflation)

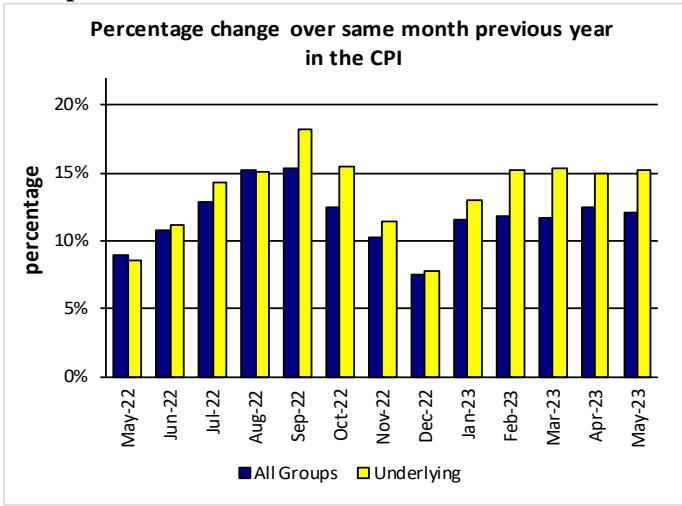
(Base Period: Average Prices February 2016 = 100)

| | CPI ALL ITEMS | Percentage change over previous month | Last 12 months over previous 12 months | UNDERLYING ALL ITEMS | Percentage change over previous month | Last 12 months over previous 12 months | LOCAL COMPONENT | Percentage change over previous month | Last 12 months over previous 12 months | IMPORTED COMPONENT | Percentage change over previous month | Last 12 months over previous 12 months |
|-----------|--------------------------|--|---|---------------------------------|--|---|----------------------------|--|---|-------------------------------|--|---|
| 2019 | 108.3 | - | 1.0 | 107.2 | - | 0.5 | 105.5 | - | 2.8 | 111.1 | - | -0.7 |
| 2020 | 106.6 | - | -1.6 | 106.6 | - | -0.5 | 105.3 | - | -0.2 | 107.9 | - | -2.9 |
| 2021 | 109.9 | - | 3.1 | 110.1 | - | 3.2 | 105.9 | - | 0.6 | 114.0 | - | 5.7 |
| 2022 | 122.0 | - | 11.0 | 122.9 | - | 11.6 | 112.6 | - | 6.3 | 131.5 | - | 15.3 |
| 2022 | | | | | | | | | | | | |
| March | 116.2 | 0.7 | 6.7 | 116.6 | 0.0 | 6.2 | 108.9 | 0.4 | 2.7 | 123.6 | 1.0 | 10.8 |
| April | 117.2 | 0.9 | 7.6 | 117.4 | 0.7 | 7.0 | 108.6 | -0.3 | 3.1 | 126.0 | 2.0 | 12.1 |
| May | 117.3 | 0.1 | 8.2 | 117.3 | -0.1 | 7.6 | 109.0 | 0.4 | 3.6 | 125.8 | -0.2 | 12.7 |
| June | 121.0 | 3.2 | 8.8 | 120.5 | 2.7 | 8.4 | 111.2 | 2.0 | 3.9 | 131.1 | 4.2 | 13.6 |
| July | 125.3 | 3.6 | 9.5 | 126.7 | 5.2 | 9.4 | 114.4 | 2.9 | 4.4 | 136.6 | 4.2 | 14.5 |
| August | 129.9 | 3.6 | 10.3 | 129.6 | 2.3 | 10.4 | 116.4 | 1.8 | 4.9 | 143.6 | 5.1 | 15.6 |
| September | 130.1 | 0.2 | 11.0 | 132.7 | 2.4 | 11.4 | 117.1 | 0.6 | 5.5 | 143.3 | -0.2 | 16.4 |
| October | 127.7 | -1.8 | 11.3 | 131.1 | -1.2 | 11.9 | 115.9 | -1.1 | 5.7 | 139.8 | -2.4 | 16.6 |
| November | 124.6 | -2.5 | 11.3 | 126.0 | -3.8 | 12.0 | 115.5 | -0.3 | 6.0 | 133.8 | -4.3 | 16.4 |
| December | 124.0 | -0.4 | 11.0 | 124.4 | -1.3 | 11.6 | 117.5 | 1.7 | 6.3 | 130.7 | -2.3 | 15.3 |
| 2023 | | | | | | | | | | | | |
| January | 128.2 | 3.3 | 11.0 | 130.5 | 4.9 | 11.9 | 118.6 | 1.0 | 6.7 | 137.9 | 5.5 | 15.1 |
| February | 129.0 | 0.6 | 11.2 | 134.4 | 3.0 | 12.3 | 118.0 | -0.5 | 7.1 | 140.2 | 1.6 | 15.1 |
| March | 129.8 | 0.6 | 11.5 | 134.5 | 0.1 | 12.9 | 119.1 | 0.9 | 7.5 | 140.7 | 0.4 | 15.2 |
| April | 131.8 | 1.6 | 11.7 | 135.0 | 0.4 | 13.4 | 122.8 | 3.1 | 8.2 | 141.1 | 0.2 | 15.1 |
| May(P) | 131.5 | -0.2 | 12.0 | 135.2 | 0.1 | 13.9 | 121.8 | -0.8 | 8.7 | 141.5 | 0.3 | 15.0 |

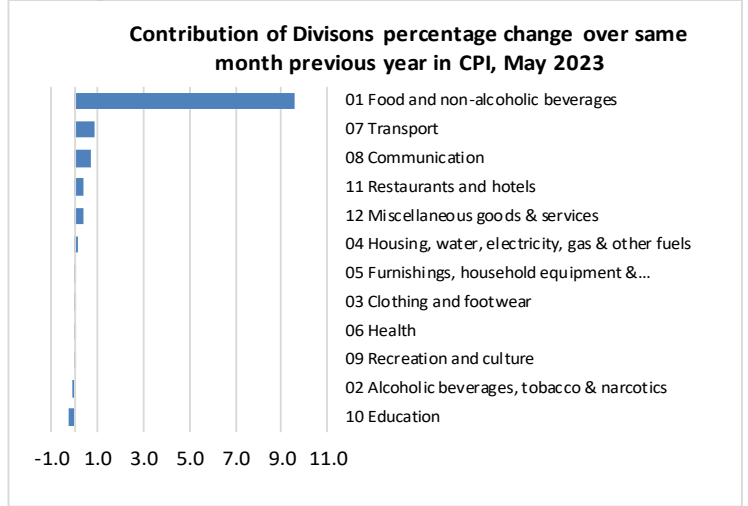
Source : Samoa Bureau Statistics

(P) : Provisional figures

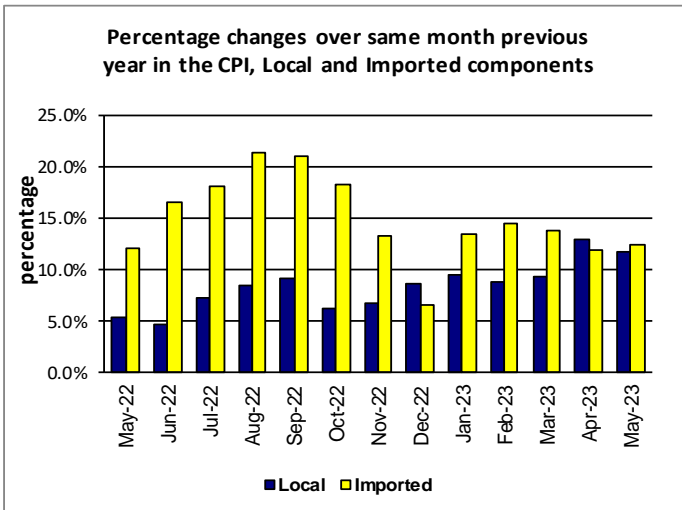
Graph.5



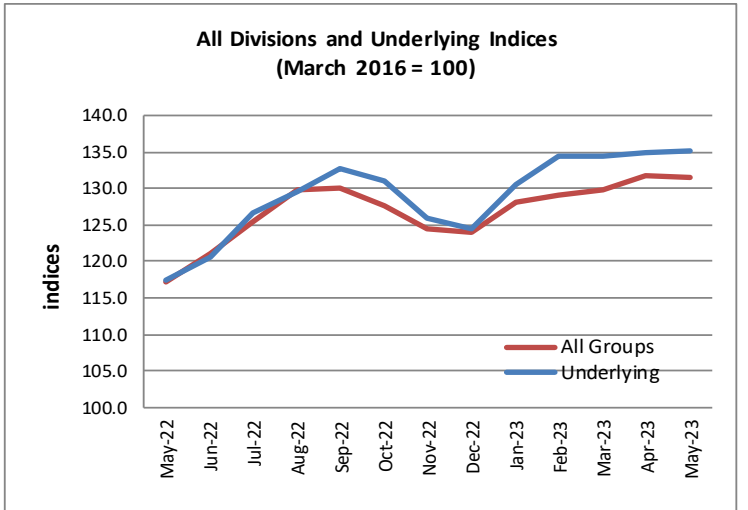
Graph.6



Graph.7



Graph.8



Graph.9

