

SAMOA BUREAU OF STATISTICS

CONSUMER PRICE INDEX JUNE 2023

Key findings:

The Consumer Price Index for June 2023 increased by 10.7 percent compared to the same month of the previous year.

- The Food and Non-Alcoholic Beverages index increased by 22.0 percent.
- The Communication index also increased by 14.0 percent.
- The Miscellaneous Goods and Services index also increased by 12.0 percent.

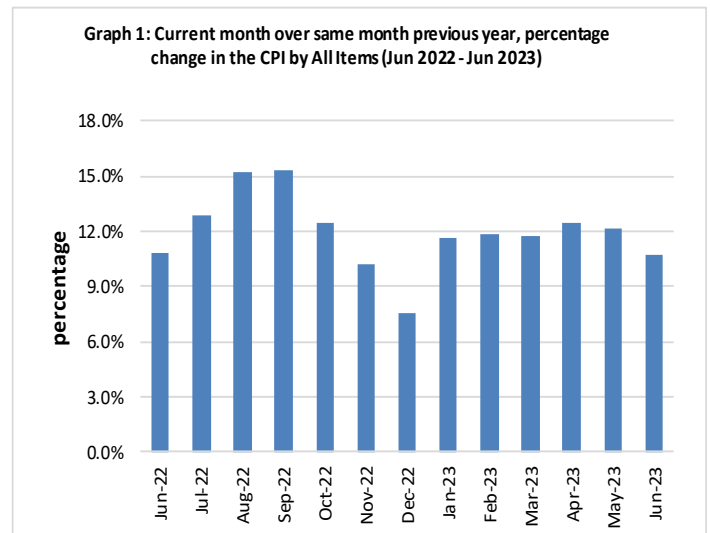
The Average Annual Inflation for the year ended June 2023 was 12.0 percent.

The CPI went up by 1.8 percent from May 2023.

SUMMARY

The Consumer Price Index (CPI) for June 2023 rose 10.7 percent compared to June 2022. This was mainly influenced by the increase in the Local goods component by 11.5 percent from the same month last year as a result of higher prices for local food, meals, phone calls, internet and airline fares.

The Imported goods component also contributed to the increase when it went up by 10.0 percent on a year-on-year (y-o-y) basis, due to higher prices for imported food, gas, household furnishing, laptop and toiletries. Graph 1 shows the percentage changes over the same month last year in the CPI by all Divisions from June 2022 to June 2023.



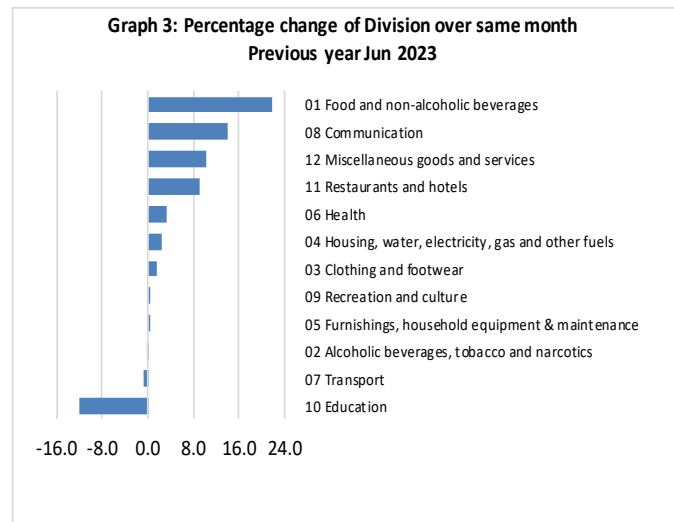
Source : Samoa Bureau of Statistics

Total All Divisions Contribution

As shown in Graph 2, Food & Non Alcoholic Beverages was the largest contributor to the 10.7 percent rise in the CPI in June 2023, with a contribution of 9.4 percentage-points (pp) to the overall increase in June 2023. The most significant drivers of this within the group were chicken leg quarters (up 29.5%), sugar (up 43.0%), noodle (up 26.0%), fresh fish (up 56.6%), turkey wings (up 29.2%), flour (up 30.3%), onion (up 32.2%), devondale milk (up 34.3%), potatoes (up 40.0%), green banana (up to 37.7%), Chinese cabbage (up 87.9%), cucumber (up 58.4%), tomato (up 71.6%), round cabbage (up 47.7%) and ta'amu which increased more than twice its average price in June 2023.

The next largest contributor was Communication with a contribution of 0.7 percentage-point, increasing 14.0% compared to June 2022. The greatest driver of this increase was mobile phone calling per minute (up 19.5%) and internet (up 15.8%). Miscellaneous goods and services also contributed 0.4 percentage point due to the increase of toilet soap (up 29.8%), hair gel (up 18.7%) and colgate toothpaste (up 14.2%).

9.2, 3.3, 2.6, and 1.5 percent respectively, while both Furnishing, Household Equipment & Maintenance and Recreation & Culture indices recorded increases of 0.5 percent each. On the other hand, Education, Transport and Alcoholic Beverages & Tobacco fell 12.0, 0.6 and 0.2 percent in that order.



Source : Samoa Bureau of Statistics

Local Goods Component

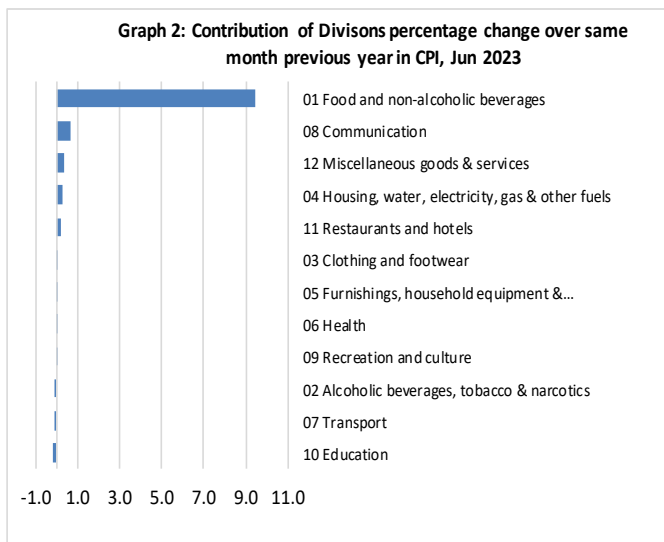
The increase in prices for local food, meals, mobile phone calling per minute, internet and airline fares have resulted in the 11.5 percent increase in the local goods component.

Imported Goods Component

The Imported goods component of the CPI registered an increase of 10.0 percent when compared to the same month last year. This increase was mainly due to higher prices recorded for imported food, laptop, gas, toilet soap, tooth paste, safe, clothing chest and kerosene stove.

Food and Non-Alcoholic Beverages Index

The increase of 22.0 percent in the Food & Non-Alcoholic Beverages index was influenced by higher prices recorded for chicken leg quarters (up 29.5%), sugar (up 43.0%), noodle (up 26.0%), fresh fish (up 56.6%), turkey wings (up 29.2%), flour (up 30.3%), onion (up 32.2%), devondale milk (up 34.3%), potatoes (up 40.0%), green banana (up to 37.7%), Chinese cabbage (up 87.9%), cucumber (up 58.4%), tomato (up 71.6%), round cabbage (up 47.7%) and ta'amu prices increasing more than twice its price in the same period of the previous year.



Source : Samoa Bureau of Statistics

Consumer Price Index (% Change)

Graph 3 shows the percentage change for all Divisions (groups) in June 2023 in comparison to June 2022. Food & Non Alcoholic had the largest increase of 22.0% followed by Communication and Miscellaneous Goods & Services which rose 14.0 and 10.2 percent respectively.

Other groups such as Restaurants, Health, Housing, Water, Electricity Gas & Other Fuel and Clothing & Footwear indices recorded increases of

Communication Index

The increase in prices for internet data bundle (up 32.0%) and mobile phone calling per minute (up 27.9%) were the major contributors to the 14.0 percent increase in the Communication index.

Miscellaneous Goods and Services Index

The 12.0 percent rise in the Miscellaneous Goods & Services index was due to higher prices recorded for toilet paper (up 12.2%), hair gel (up 18.7%), toilet soap (up 29.8%) and Colgate (up 14.2%).

Restaurants Index

The Restaurants index recorded an increase of 9.2 percent due to the rise in prices for chicken & chips (up 21.0%), steam rice & chicken meal (up 14.3%) and fish & chips (up 7.8%).

Health Index

The 3.2 percent increase in the Health index was influenced by higher prices recorded for medicine (amoxicillin tablets).

Housing, Water, Electricity, Gas and other Fuels Index

The increase in prices for gas and paint have led to the 2.6 percent increase in the Housing, Water, Electricity, Gas and other Fuels index.

Clothing and Footwear Index

Clothing and Footwear index rose 1.5 percent due to the increases in prices for shirt short sleeve and ie faitaga.

Furnishings, Household Equipment & Maintenance Index

The Furnishings, Household Equipment & Maintenance index rose 0.5 percent due to the increase in prices for kerosene stove, glass buffet sideboard (sefe) and clothing chest.

Recreation and Culture Index

The 0.5 percent increase in the Recreation and Culture index was mainly driven by the increase in prices for laptop offsetting the decreases in the prices for exercise books and television.

Education

The 12.0 percent decrease in the Education index was a result of lower prices recorded for NUS registration fees (down 62.1%).

Transport Index

The 0.6 percent decrease in Transport was driven by the decrease in prices for petrol and diesel

offsetting the increase in prices for airline fares (Apia-Pago-Apia) and (Apia-Auckland-Apia).

Alcoholic Beverages and Tobacco Index

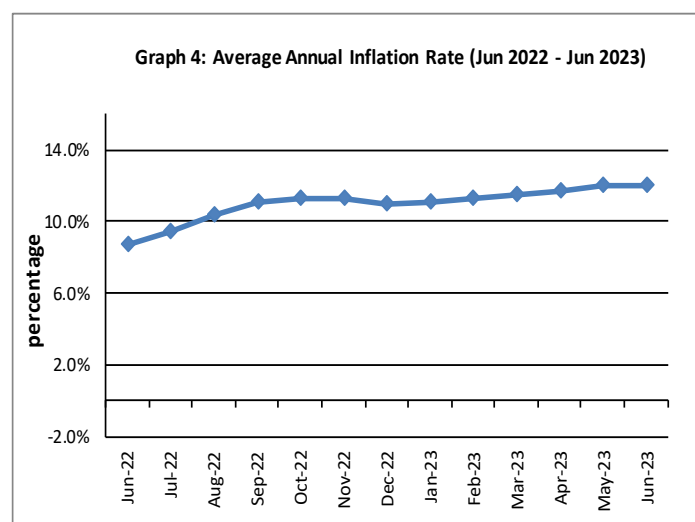
Lower prices recorded for Winfield roll contributed primarily to the 0.2 percent decrease in the Alcoholic Beverages and Tobacco index.

Underlying Indices ^{1/}

The All Items Underlying Index for June 2023 registered an increase of 14.2 percent when compared to June 2022. It also increased by 0.1 percent when compared to May 2023. Both the Imported and Local Items Underlying Indices recorded increases of 16.3 and 9.3 percent respectively.

Inflation Rate

The average annual inflation rate for the year ended June 2023 was 12.0 percent. For the twelve months ending June 2022, the inflation rate was 8.8 percent. Presented in Graph 4 is the average annual inflation rate (June 2022 - June 2023).



Source : Samoa Bureau of Statistics

The attached Tables and Graphs provide the user with more detailed analysis.

Technical Notes:

The Consumer Price (CPI) measures the rate of inflation for Samoa. It is designed to measure the change in prices for the goods purchased by households in Samoa. The CPI measures the change in prices by comparing the prices for a basket of goods and services at the collection period with the price for the same goods in a base period.

The basket of goods that is priced is based on the average expenditures of households as recorded in the Household Income and Expenditure Survey (HIES). The HIES survey identifies how much households spend on different items. The more households spend on an item on average, the more important it is to the price index, and the higher the weight in the index.

^{1/} Monthly movements in the 'headline' CPI series can be volatile. This volatility reflects price changes in particular items that may be due, among other factors, to fluctuations in commodity markets and agricultural conditions, policy changes, or seasonal or infrequent price resetting.

Underlying inflation is a measure of inflation that excludes certain items that face volatile price movements. Underlying inflation eliminates products that can have temporary price shocks because these shocks can diverge from the overall trend of inflation and give a false measure of inflation.

SAMOA BUREAU OF STATISTICS

*Economic Statistics Division
FMFM II Building, Level 1
P O Box 1151
Apia, Samoa*

Phone: (685) 62014/62015

Fax: (685) 24675

E-mail: info.stats@sbs.gov.ws

Website: www.sbs.gov.ws

Date of release: 20th June 2023

The next Consumer Price Index will be released on 18th August 2023.

Table 1. CONSUMER PRICE INDEX.

(Base Period : Average Prices February 2016 = 100)

Group	All Items	Food and Non Alcoholic Beverages	Alcoholic Beverages, Tobacco and Narcotics	Clothing and Footwear	Housing, Water, Electricity, Gas and other Fuels	Furnishings, Household Equipment, and Maintenance	Health	Transport	Communication	Recreation and Culture	Education	Restaurants	Miscellaneous goods and services
Weights	1000.0	403.7	128.4	21.2	119.6	30.8	4.6	148.5	51.5	6.1	19.7	22.4	43.5
Ave - 2020	106.6	110.4	120.0	93.5	89.6	98.1	99.2	104.4	104.2	88.5	114.9	109.4	98.8
Ave - 2021	109.9	114.1	121.6	98.9	92.4	98.9	105.7	111.7	107.1	88.2	109.9	111.2	97.2
Ave - 2022	122.0	131.8	122.8	108.3	93.1	105.0	101.9	131.0	124.5	91.0	109.4	126.2	102.1
2022													
June	121.0	129.0	122.6	109.3	93.6	106.3	95.1	134.8	115.8	91.8	109.4	128.3	101.2
July	125.3	135.9	123.0	108.4	93.6	106.8	104.1	137.9	133.7	90.6	109.4	128.5	102.5
August	129.9	141.4	123.4	108.7	96.0	108.1	108.8	149.9	133.7	92.3	109.4	129.2	104.7
September	130.1	145.5	123.4	108.0	94.8	107.5	102.0	140.9	133.7	92.0	109.4	133.8	104.7
October	127.7	141.9	123.4	108.5	94.5	108.0	98.9	135.3	133.7	88.6	109.4	133.2	105.1
November	124.6	134.3	123.4	106.9	94.6	106.6	100.0	134.9	132.0	91.8	109.4	135.1	106.0
December	124.0	134.5	123.0	107.4	94.5	106.0	100.0	131.2	132.0	91.9	109.4	135.1	105.8
2023													
January	128.2	144.5	123.6	107.6	94.4	106.1	100.0	131.1	132.0	93.3	109.4	135.1	106.9
February	129.0	149.5	123.9	107.3	93.7	106.8	100.0	124.8	132.0	93.3	96.3	135.1	107.2
March	129.8	149.0	125.5	109.9	94.2	106.4	97.6	128.0	132.0	93.3	96.3	140.1	110.9
April	131.8	154.0	123.7	110.6	94.1	106.5	97.6	129.2	132.0	95.6	96.3	140.1	111.1
May	131.5	152.3	123.8	110.8	93.4	106.7	97.6	132.2	132.0	92.3	96.3	140.1	111.8
June (P)	133.9	157.3	122.4	111.0	96.0	106.8	98.3	134.0	132.0	92.3	96.3	140.1	111.5
<u>Percentage Change (P)</u>													
Jun 2023 over Jun 2022	10.7%	22.0%	-0.2%	1.5%	2.6%	0.5%	3.3%	-0.6%	14.0%	0.5%	-12.0%	9.2%	10.2%
Jun 2023 over May 2023	1.8%	3.3%	-1.2%	0.2%	2.8%	0.0%	0.7%	1.3%	0.0%	0.0%	0.0%	0.0%	-0.3%

Source : Samoa Bureau Statistics

(P) : Provisional figures

Table 2. ALL ITEMS UNDERLYING INDEX

(Base Period : Average Prices February 2016 = 100)

Group	All Items	Food and Non Alcoholic Beverages	Alcoholic Beverages, Tobacco and Narcotics	Clothing and Footwear	Housing, Water, Electricity, Gas and other Fuels	Furnishings, Household Equipment, and Maintenance	Health	Transport	Communication	Recreation and Culture	Education	Restaurants	Miscellaneous goods and services
Weights	586.7	345.3	n.a	21.2	24.2	30.8	3.5	26.4	51.5	5.6	12.3	22.4	43.5
Ave - 2020	106.6	109.9		93.5	93.7	98.1	98.9	110.1	104.2	87.6	120.6	109.4	98.8
Ave - 2021	110.1	114.8		98.9	94.5	98.9	107.5	113.6	107.1	87.3	112.7	111.2	97.2
Ave - 2022	122.9	130.1		108.3	110.2	105.0	102.5	115.5	124.5	90.4	111.9	126.2	102.1
2022													
June	120.5	127.2		109.3	111.5	106.3	93.5	114.5	115.8	91.2	111.9	128.3	101.2
July	126.7	134.9		108.4	111.2	106.8	105.4	114.5	133.7	89.9	111.9	128.5	102.5
August	129.6	139.1		108.7	111.9	108.1	111.7	115.8	133.7	91.7	111.9	129.2	104.7
September	132.7	144.1		108.0	112.6	107.5	102.6	117.1	133.7	91.4	111.9	133.8	104.7
October	131.1	141.3		108.5	112.2	108.0	98.5	117.2	133.7	87.8	111.9	133.2	105.1
November	126.0	132.9		106.9	112.9	106.6	100.1	117.4	132.0	91.2	111.9	135.1	106.0
December	124.4	130.1		107.4	112.4	106.0	100.1	117.4	132.0	91.3	111.9	135.1	105.8
2023													
January	130.5	140.3		107.6	112.9	106.1	100.1	117.4	132.0	92.8	111.9	135.1	106.9
February	134.4	146.8		107.3	112.9	106.8	100.1	117.4	132.0	92.8	111.9	135.1	107.2
March	134.5	146.0		109.9	114.3	106.4	96.9	117.7	132.0	92.8	111.9	140.1	110.9
April	135.0	146.7		110.6	114.2	106.5	96.9	119.2	132.0	95.3	111.9	140.1	111.1
May	135.2	146.5		110.8	113.9	106.7	96.9	124.3	132.0	91.7	111.9	140.1	111.8
June (P)	137.7	150.0		111.0	125.8	106.8	97.7	124.3	132.0	91.7	111.9	140.1	111.5
<u>Percentage Change (P)</u>													
Jun 2023 over Jun 2022	14.2%	17.9%		1.5%	12.9%	0.5%	4.5%	8.6%	14.0%	0.5%	0.0%	9.2%	10.2%
Jun 2023 over May 2023	0.1%	-0.1%		0.2%	-0.3%	0.3%	0.0%	4.3%	0.0%	-3.8%	0.0%	0.0%	0.7%

Source : Samoa Bureau Statistics

(P) : Provisional figures

Note : n.a. Not applicable

Table 3. AVERAGE RETAIL PRICES OF SELECTED COMMODITIES

Commodities	Wt	Unit	2022			2023			Jun-23	
			Apr	May	Jun	Apr	May	Jun (P)	% chng from prev mnth	%chng from Jun 22
			01 Food and non-alcoholic beverages							
Chicken leg quarters	62.19	kg	5.04	4.88	5.27	6.37	6.51	6.82	4.8%	29.5%
Raw Sugar	21.27	kg	2.99	3.01	2.85	3.58	3.57	4.07	14.0%	43.0%
Bread	17.20	loaf	1.65	1.66	1.75	1.89	1.89	1.92	1.6%	9.6%
Corned Beef Oxford (a)	15.88	340 grms	8.77	9.02	9.02	10.43	10.43	10.43	0.0%	15.7%
Taro	15.17	kg	3.38	3.36	3.98	4.09	4.36	4.78	9.5%	19.9%
Re-packed medium grain rice	13.38	kg	3.11	3.14	3.14	3.56	3.35	3.62	8.2%	15.4%
Prepacked medium grain rice (a)	13.38	907 grms	2.80	2.80	2.88	3.05	2.83	3.03	7.1%	5.2%
Bongo	10.18	20 grms	0.82	0.82	0.84	0.90	0.92	0.92	0.0%	9.5%
Keke Saina Biscuits (a)	9.21	pkt 10	6.21	6.21	6.29	7.38	7.29	7.38	1.1%	17.2%
Ice Cream (a)	9.17	2 ltr	16.85	16.85	17.02	19.42	19.55	18.37	-6.1%	7.9%
Ramen	9.00	85 gms	1.08	1.11	1.11	1.38	1.38	1.40	1.6%	26.0%
Fish (Piece)	7.92	kg	25.00	23.90	24.78	60.00	37.92	45.00	18.7%	81.6%
Butter	7.66	454 grms	16.66	16.80	18.31	18.89	18.89	18.94	0.3%	3.4%
Round Pancake (a)	7.50	sml	0.15	0.15	0.20	0.20	0.20	0.20	0.0%	0.0%
Mutton Flaps	6.63	kg	25.48	26.05	25.32	25.02	26.02	26.35	1.3%	4.1%
Canned fish betw een \$3.00 and \$3.99 N/Oi	6.37	425 grms	3.40	3.23	3.27	3.37	3.49	3.51	0.6%	7.5%
Canned fish \$4:00 or over N/Oil	6.37	425 grms	4.72	4.70	4.67	4.89	4.74	4.74	0.0%	1.5%
Canned fish betw een \$3.00 and \$3.99 N/Oi	6.37	425grms	3.21	3.11	3.18	3.36	3.36	3.34	-0.7%	5.1%
Canned fish under \$3.00 in N/Oil	6.37	425 grms	2.87	3.00	3.12	2.73	2.78	2.85	2.4%	-8.6%
Turkey Wings	6.31	kg	12.83	12.46	12.64	17.28	17.38	16.33	-6.0%	29.2%
Fish (string)	5.98	kg	10.66	12.11	11.25	17.86	16.04	16.21	1.1%	44.2%
Fish (large)	5.98	kg	19.41	20.29	18.94	21.65	33.49	27.30	-18.5%	44.1%
Cooking vegetable oil (a)	5.89	ltr	7.06	7.48	7.61	8.74	8.25	8.33	1.0%	9.5%
Sausage beef	5.76	kg	14.80	14.70	15.12	15.42	15.35	15.59	1.6%	3.1%
Chinese Cabbage	5.53	kg	7.37	6.62	6.07	10.37	10.12	11.40	12.6%	87.9%
Eggs medium size	5.45	doz	7.13	7.34	7.24	8.05	7.90	8.22	4.1%	13.6%
Flour plain w hite	5.29	kg	2.51	2.63	2.72	3.73	3.48	3.54	1.5%	30.3%
Onions	5.23	kg	4.37	4.27	4.06	5.57	5.55	5.37	-3.3%	32.2%
Milk Devondale	5.11	1ltr	4.10	4.14	4.28	5.75	5.62	5.75	2.3%	34.3%
Soft Drink Coke	5.07	600 mls	2.97	2.98	3.05	3.72	3.80	3.78	-0.5%	23.8%
Soft Drink Taxi	5.07	330 mls	1.87	1.87	1.87	1.92	1.92	1.92	0.0%	2.7%
Milk Anchor	4.81	1ltr	4.06	4.08	4.24	5.17	5.17	5.20	0.6%	22.6%
Salted Beef	4.72	kg	21.13	21.63	22.18	23.45	23.24	23.24	0.0%	4.8%
Canned fish Soifua in Tomato Sauce	4.47	425 grms	2.48	2.48	2.45	2.48	2.59	2.58	-0.5%	5.1%
CCK Coffee	4.47	100 grms	3.94	3.94	3.94	4.20	4.20	4.46	6.2%	13.2%
Sky Flakes Biscuits	4.29	850 grms	17.04	17.33	17.87	19.66	20.47	19.81	-3.2%	10.9%
Stew ing beef	4.20	kg	16.05	16.45	16.49	17.79	18.48	18.48	0.0%	12.1%

Koko Samoa	4.09	cup	15.42	17.22	16.76	22.25	17.11	19.31	12.8%	15.2%
Corned Beef Pacific	3.64	340 grms	15.91	15.86	15.86	19.39	19.59	19.68	0.4%	24.1%
Ramen kimchi (bowl)	3.40	86 grms	2.86	2.97	3.28	3.48	3.50	3.18	-9.3%	-3.1%
Soy Sauce Mushroom	3.25	750 grms	3.25	3.16	3.38	3.72	3.74	3.70	-1.1%	9.6%
Pork Pig Trotter	3.10	kg	9.08	10.25	9.30	9.71	8.74	9.55	9.4%	2.7%
Corned Beef Palm	3.01	340 grms	15.58	16.80	16.73	19.12	18.91	18.59	-1.7%	11.1%
Ripe Banana (a)	2.71	kg	3.74	3.67	3.49	4.16	4.18	4.40	5.3%	26.1%
Tang powder (a)	2.51	25 grms	0.66	0.66	0.66	0.57	0.57	0.57	0.0%	-13.7%
Minties Pascall (a)	2.49	200 grms	12.50	12.50	12.50	16.50	16.50	12.50	-24.2%	0.0%
Potatoes	2.41	kg	4.68	4.59	4.75	6.35	6.90	6.65	-3.6%	40.0%
Green Banana	2.29	kg	1.49	1.44	1.45	1.58	1.85	2.04	10.2%	40.7%
Apple small	2.26	each	1.82	1.77	1.76	2.09	2.06	1.68	-18.6%	-4.5%
Mineral Water	2.25	bottle	1.53	1.54	1.54	1.97	1.84	1.84	0.0%	19.1%
Chocolate Cake (a)	2.15	sml	21.20	21.50	21.50	22.40	22.40	23.40	4.5%	8.8%
Cucumbers	2.12	kg	5.21	5.29	5.25	6.97	7.62	8.32	9.2%	58.4%
Instant Nescafe Coffee	2.02	50 grms	6.90	6.90	7.14	8.72	8.12	8.72	7.4%	22.1%
Mutton Neck	1.93	kg	23.84	24.75	25.56	26.42	26.74	26.54	-0.7%	3.8%
Vermicelli Lungken	1.88	454 grms	4.03	4.05	4.25	4.82	4.75	4.63	-2.6%	9.1%
Tomatoes	1.80	kg	16.33	16.42	16.60	25.11	28.66	28.48	-0.6%	71.6%
Sausage Pork	1.68	kg	14.22	14.27	14.49	15.51	15.38	15.44	0.3%	6.6%
Bell Tea Bags	1.62	150 grms	11.36	11.36	11.38	11.39	11.34	11.27	-0.6%	-0.9%
Samco Twisties	1.40	20 grms	0.71	0.73	0.73	0.81	0.81	0.81	0.0%	11.8%
Matured husked Coconuts	1.30	kg	1.02	1.01	1.08	1.25	1.13	1.26	11.5%	17.2%
Matured Un husked Coconuts (a)	1.30	kg	0.67	0.71	0.79	0.63	0.77	0.79	2.4%	-0.3%
Taamu	1.13	kg	5.83	8.41	7.45	19.50	13.23	22.13	67.2%	197.2%
Round Cabbage Round	1.12	kg	10.41	11.25	10.84	17.15	14.88	16.01	7.6%	47.7%

02 Alcoholic beverages, tobacco and narcotics

Beer Vailima Lager	37.94	355 mls	3.73	3.76	3.76	3.80	3.80	3.80	0.0%	1.0%
Pall Mall Filter Cigarettes (Red)	24.29	20 rolls	14.60	14.60	14.60	14.60	14.60	14.60	0.0%	0.0%
Pall Mall Menthol Cigarettes (Green)	24.29	20 rolls	14.60	14.60	14.60	14.60	14.60	14.60	0.0%	0.0%
Beer Taula (a)	16.26	330 mls	3.54	3.56	3.60	4.28	4.26	4.29	0.6%	19.1%
Tobacco winfield (a)	12.64	30 grms	15.00	15.00	15.00	12.50	12.50	10.00	-20.0%	-33.3%
Vodka Niu Spirit (a)	3.76	Niu / 2 ltr	66.82	66.82	66.82	66.82	66.78	66.78	0.0%	0.0%
Whisky Jim Bean Spirit (a)	3.76	1 ltr	94.63	89.25	88.50	94.63	98.00	100.73	2.8%	13.8%
Paper Cigarettes	3.61	50 sheets	1.70	1.70	1.70	1.86	1.90	1.90	0.0%	11.8%
Samoaan kava	1.82	pkt	45.19	44.00	40.00	41.85	38.57	42.78	10.9%	6.9%

03 Clothing and footwear

Uniform le Faitaga College boys	4.28	size 8-10	38.33	38.33	38.33	38.33	39.00	39.00	0.0%	1.7%
Uniform Pa'ave (a)	3.71	size 7	42.67	42.67	42.67	45.00	45.00	45.00	0.0%	5.5%
Jandals soft	2.48	10.5 size	9.25	9.25	9.25	9.50	9.50	9.50	0.0%	2.7%
Puletasi mamanu palama (a)	2.35	medium	150.00	150.00	150.00	130.00	130.00	130.00	0.0%	-13.3%
le solosolo cotton print	2.22	42 inch	11.87	12.58	12.58	12.90	12.90	13.23	2.6%	5.2%
Cargo shorts (a)	1.76	38 size	92.25	92.25	92.25	93.00	93.00	93.00	0.0%	0.8%
Shirt short sleeves men Aloha shirt (a)	1.15	men / XL	55.23	55.23	55.23	59.48	59.48	59.48	0.0%	7.7%
Shirt long sleeves men	1.15	16.5 size	37.24	37.13	37.13	38.38	38.38	38.38	0.0%	3.4%
Shoes Nike Running shoes (a)	0.82	size 9	262.25	258.50	258.50	224.75	209.75	209.75	0.0%	-18.9%
le Faitaga	0.70	36/38 size	35.43	35.80	35.18	39.06	38.31	38.31	0.0%	8.9%
Woman Nylon Panties	0.59	medium	4.72	4.72	4.72	4.50	4.50	4.42	-1.9%	-6.4%

04 Housing, water, electricity, gas and other fuels

Electricity Cashpower	50.59	kwh	0.58	0.58	0.58	0.58	0.58	0.58	0.9%	0.9%
Reservoir treated Water	28.55	15-40 m3	1.34	1.34	1.34	1.34	1.34	1.34	0.0%	0.0%
Liquid gas	15.77	9kg	72.05	72.55	72.05	71.80	71.80	84.30	0.0%	17.0%
Government house Rent	12.16	2 b/room	650.00	650.00	650.00	680.00	680.00	680.00	0.0%	4.6%
Kerosene	4.12	1 ltr	2.86	2.87	3.53	3.20	2.86	2.86	-10.7%	-18.9%
Paint High gloss white	3.45	4 ltrs	82.17	82.25	82.75	85.25	85.25	87.25	0.0%	5.4%
Paint Plus 2 plastic white	3.45	4 ltrs	49.20	48.20	48.20	53.40	53.00	54.60	-0.7%	13.3%
Cement NZ or Australia	0.78	40 kg	38.61	38.11	38.94	45.00	42.23	42.16	-6.2%	8.3%
Dressed per Timber 2x4	0.71	meter	10.74	10.92	10.92	11.08	11.53	10.53	4.0%	-3.6%

05 Furnishings, household equipment and routine household maintenance

Washing powder (a)	6.27	200 grms	2.00	2.00	2.06	2.02	2.02	2.02	0.0%	-1.6%
Washing Soap yellow	5.90	bar	3.05	3.05	3.24	3.35	3.35	3.33	-0.5%	2.8%
Mosquito coil	4.36	10 coil	1.38	1.38	1.45	1.53	1.53	1.45	-4.9%	0.0%
Mattress single Futon (a)	3.81	4 inch	152.00	152.00	163.17	151.83	155.17	164.33	5.9%	0.7%
Babysitting live-in (a)	3.78	1 week	142.50	142.50	142.50	142.50	142.50	142.50	0.0%	0.0%
Refridgerator common brand	2.49	331-335 ltr	2291.32	2291.32	2382.72	2401.32	2401.32	2401.32	0.0%	0.8%
Gold Power washing powder	1.68	180 grms	1.67	1.67	1.67	1.67	1.67	1.67	0.0%	0.0%
Eveready AA size Batteries	1.20	AA 1/4 size	3.91	3.84	3.84	4.01	4.01	4.26	6.0%	10.8%
Bush knife tramontina	0.88	24 inch	29.61	29.86	29.86	29.11	28.99	28.24	-2.6%	-5.4%
Kerosene stove	0.16	2 burner	112.50	112.50	113.75	137.25	137.25	137.25	0.0%	20.7%
Tumblers Glass basic no design (a)	0.11	medium	17.46	17.46	17.46	15.96	15.96	15.96	0.0%	-8.6%
Sefe 3 shelves	0.11	48*48 inch	645.00	645.00	645.00	760.00	760.00	780.00	2.6%	20.9%
Clothing chest flat top	0.01	medium	550.00	550.00	550.00	757.50	757.50	757.50	0.0%	37.7%

06 Health

Amoxicillin 500mg tablets (a)	2.46	20 tablets	7.77	7.10	7.10	8.23	8.23	8.27	0.4%	16.4%
Hospital Charge	1.15	per night	22.50	22.50	22.50	22.50	22.50	22.50	0.0%	0.0%
Private Doctor Consultation fee	1.04	per adult	30.00	30.00	30.00	30.00	30.00	30.00	0.0%	0.0%

07 Transport

Petrol	60.80	1 ltr	3.33	3.34	3.74	3.26	3.33	3.40	2.1%	-9.1%
Taxi Fare P.O to Motootua Hosp	8.15	per trip	4.80	4.80	4.80	4.80	4.80	4.80	0.0%	0.0%
Taxi Fares P.O to Malua	8.15	per trip	31.30	31.30	31.30	31.30	31.30	31.30	0.0%	0.0%
Taxi Fares P.O to Falefa	8.15	per trip	43.20	43.20	43.20	43.20	43.20	43.20	0.0%	0.0%
Air Fares Faleolo-Pago-Faleolo	6.84	return trip	395.00	395.00	395.00	680.00	680.00	680.00	0.0%	72.2%
Air Fares Apia Auckland Apia	6.77	1 month	1257.87	1257.87	1459.44	1468.81	2009.44	2185.41	8.8%	49.7%
Car Registration (private car)	5.67	1501-2000 cc	256.00	256.00	256.00	256.00	256.00	256.00	0.0%	0.0%
Used Car Toyota Corolla (a)	5.08	1500 cc	23500.00	23500.00	23500.00	25333.33	26666.67	26666.67	0.0%	13.5%
Used Car Toyota Camry (a)	5.08	1500 cc	18000.00	18000.00	18000.00	18000.00	18000.00	18000.00	0.0%	0.0%
Diesel	4.83	1 ltr	3.29	3.30	3.98	3.56	3.29	3.34	1.5%	-16.1%
Bus Fares Apia Motootua Hosp	3.49	one adult	1.30	1.30	1.30	1.30	1.20	1.20	0.0%	-7.7%
Bus Fares Apia Malua	3.49	one adult	2.60	2.60	2.60	2.60	2.60	2.60	0.0%	0.0%
Bus Fares Apia Falefa	3.49	one adult	3.70	3.70	3.70	3.70	3.70	3.70	0.0%	0.0%
Labour charge car repair	3.38	min charge	67.00	67.00	67.00	67.00	67.00	67.00	0.0%	0.0%
New Pickup Ford Ranger Double cab (a)	3.25	3200 cc	94000.00	94000.00	94000.00	94000.00	94000.00	94000.00	0.0%	0.0%
New Pickup Toyota Hilux Double cab (a)	3.25	3200 cc	105000.00	105000.00	105000.00	105000.00	105000.00	105000.00	0.0%	0.0%
Used Mini van Toyota Noah (a)	2.42	2000 cc	19600.00	19600.00	19600.00	21600.00	24600.00	24600.00	0.0%	25.5%
Used Mini van Toyota Voxy (a)	2.42	2000 cc	19600.00	19600.00	19600.00	21600.00	24600.00	24600.00	0.0%	25.5%
Car Tyre	1.49	195/70 R(14)	203.75	203.75	203.75	212.50	212.50	212.50	0.0%	4.3%
Boat Fares Mulifanua Salelologa	1.14	one way	10.00	10.00	10.00	10.00	10.00	10.00	0.0%	0.0%
Boat Fares Apia Pago Apia	1.14	min charge	120.00	120.00	120.00	120.00	120.00	120.00	0.0%	0.0%

08 Communication

Calling per minute Rate cell phone (a)	10.02	per minute	0.43	0.43	0.43	0.55	0.55	0.55	0.0%	27.9%
Internet data bundles per mb Rate (a)	10.02	per mb	0.25	0.25	0.25	0.33	0.33	0.33	0.0%	32.0%
Calling per minute Rate cell phone (a)	10.02	per minute	0.44	0.44	0.44	0.49	0.49	0.49	0.0%	11.4%
Internet data bundles per mb Rate (a)	10.02	per mb	0.32	0.32	0.32	0.33	0.33	0.33	0.0%	3.1%
Telephone Rental	3.87	1month	24.15	24.15	24.15	24.15	24.15	24.15	0.0%	0.0%
Prepaid Internet	3.06	30 mins	5.80	5.80	5.80	5.80	5.80	5.80	0.0%	0.0%
Telephone call NZ	1.50	3 mins	2.32	2.32	2.32	2.37	2.37	2.37	0.0%	2.2%
Telephone call USA	1.50	3 mins	2.97	2.97	2.97	2.97	2.97	2.97	0.0%	0.0%
Telephone call local	1.50	1min	0.10	0.10	0.10	0.10	0.10	0.10	0.0%	0.0%

09 Recreation and culture

Television LCD 32" (a)	2.30	LCD 32"	852.83	852.83	852.83	929.33	815.83	815.83	0.0%	-4.3%
Exercise Book w arw ick	1.44	1B4	1.62	1.62	1.62	1.47	1.47	1.47	0.0%	-9.3%
Laptop (a)	1.33	each	2898.60	2898.60	2898.60	3503.00	3522.80	3522.80	0.0%	21.5%
Weedkiller Graxomone/Agriquat (a)	0.56	1ltr	46.67	46.67	46.67	51.67	51.67	51.67	0.0%	10.7%
Cinema Admission	0.41	ticket	15.00	15.00	15.00	15.00	15.00	15.00	0.0%	0.0%
New s Paper Samoa Observer	0.01	each	2.50	2.50	2.50	2.50	2.50	2.50	0.0%	0.0%
New s Paper New sline	0.01	each	2.50	2.50	2.50	2.50	2.50	2.50	0.0%	0.0%

10 Education

Fees Primary PTA/registration fees (a)	7.23	Year 6	72.50	72.50	72.50	72.50	72.50	72.50	0.0%	0.0%
Fees Secondary PTA/registration fees (a)	5.11	Year 10	58.00	58.00	58.00	58.00	58.00	58.00	0.0%	0.0%
Fees Tertiary NUS registration School Fees	3.79	registration	322.00	322.00	322.00	122.00	122.00	122.00	0.0%	-62.1%
Fees Secondary Y Examination Fees (a)	3.61	Y12-13	25.50	25.50	25.50	25.50	25.50	25.50	0.0%	0.0%

11 Restaurants and hotels

Fish & Chip Meal	7.79	1serve	10.17	10.17	10.75	11.58	11.58	11.58	0.0%	7.8%
Curry & Chopsuey Meal	4.87	1serve	4.67	4.67	5.33	5.33	5.33	5.33	0.0%	0.0%
Chicken & Chips Meal (a)	4.87	1serve	10.43	10.43	11.21	13.57	13.57	13.57	0.0%	21.0%
Steam rice & chicken Meal (a)	4.87	1serve	5.50	5.50	5.83	6.67	6.67	6.67	0.0%	14.3%

12 Miscellaneous goods and services

Toilet Paper Sofan deluxe ply	8.52	250 sheets	1.09	1.13	1.13	1.26	1.26	1.26	0.0%	12.2%
Hair Gel	4.59	124 ml	4.66	5.10	4.81	5.71	5.71	5.71	0.0%	18.7%
Storage of remains (a)	4.41	per day	60.00	60.00	60.00	66.67	66.67	66.67	0.0%	11.1%
Basic Casket (a)	4.41	each	1966.67	1966.67	1966.67	1966.67	1966.67	1966.67	0.0%	0.0%
Standard Embalming (a)	4.41	1person	1500.00	1500.00	1500.00	1525.00	1525.00	1525.00	0.0%	1.7%
Toilet soap Protex (a)	4.38	90g	1.95	1.95	2.03	2.04	2.05	2.02	-1.8%	-0.4%
Diapers Soft Love (a)	4.19	5kg-10kg	7.51	7.51	7.46	7.50	7.50	7.50	0.0%	0.6%
Toilet soap Lux	3.87	85g	1.05	1.05	1.05	1.33	1.38	1.36	-0.9%	29.8%
Paste Colgate regular flavour	3.43	140g	4.37	4.37	4.39	4.99	5.02	5.01	-0.2%	14.2%
Diapers Huggies	1.30	16kg & over	39.68	39.68	39.68	39.72	41.89	42.50	1.5%	7.1%

Source : Samoa Bureau Statistics

(a) : New commodity from February 2016

(P) : Provisional figures

Note : Please note unit of conversion was in pound's (lb's) but been converted into kilograms (kg)

Table 4. IMPORTED GOODS COMPONENT OF THE CONSUMER PRICE INDEX**(Base Period : Average Prices February 2016 = 100)**

	All Items	Food and Non Alcoholic Beverages	Alcoholic Beverages, Tobacco and Narcotics	Clothing and Footwear	Housing, Water, Electricity, Gas and other Fuels	Furnishings, Household Equipment and Maintenance	Health	Transport	Communication	Recreation and Culture	Education	Restaurants	Miscellaneous goods and services
<i>Weights</i>	494.7	269.1	23.8	15.2	28.3	26.9	2.5	88.6	<i>n.a</i>	5.6	<i>n.a</i>	<i>n.a</i>	34.7
<i>Ave - 2020</i>	107.9	112.2	117.1	93.2	96.0	97.7	95.8	107.4		87.6			98.0
<i>Ave - 2021</i>	114.0	118.4	118.8	100.9	99.1	98.7	108.0	119.9		87.3			95.9
<i>Ave - 2022</i>	131.5	136.3	119.2	114.6	121.9	105.7	100.9	149.1		90.4			102.0
<i>2022</i>													
<i>June</i>	131.1	132.3	118.4	115.3	125.1	107.1	88.1	158.2		91.2			101.0
<i>July</i>	136.6	141.9	119.1	115.4	124.9	107.7	105.0	158.2		89.9			102.5
<i>August</i>	143.6	147.3	119.1	115.8	132.6	109.2	114.0	176.4		91.7			105.3
<i>September</i>	143.3	153.2	119.1	115.1	127.4	108.4	101.1	159.3		91.4			105.4
<i>October</i>	139.8	149.4	119.2	115.4	126.2	109.0	95.3	152.0		87.8			105.8
<i>November</i>	133.8	138.2	119.2	114.1	126.8	107.4	97.4	152.0		91.2			106.9
<i>December</i>	130.7	134.4	119.3	114.2	126.2	106.8	97.4	147.0		91.3			106.7
<i>2023</i>													
<i>January</i>	137.9	147.5	119.6	114.3	126.0	106.9	97.4	146.6		92.8			108.0
<i>February</i>	140.2	155.5	119.5	113.8	122.8	107.6	97.4	135.6		92.8			108.5
<i>March</i>	140.7	154.0	119.9	116.6	124.8	107.2	92.9	141.2		92.8			111.9
<i>April</i>	141.1	154.6	109.9	117.3	124.7	107.3	92.9	143.3		95.3			112.1
<i>May</i>	141.5	154.5	111.0	117.5	121.5	107.6	92.9	146.4		91.7			113.1
<i>June (P)</i>	144.2	158.4	102.4	117.8	131.7	107.6	94.1	148.7		91.7			112.7
<u>Percentage Change (P)</u>													
<i>Jun 2023 over Jun 2022</i>	10.0%	19.8%	-13.5%	2.2%	5.3%	0.4%	6.8%	-6.0%		0.5%			11.6%
<i>Jun 2023 over May 2023</i>	1.9%	2.5%	-7.7%	0.2%	8.4%	0.0%	1.3%	1.6%		0.0%			-0.3%

Samoa Bureau Statistics

(P) : Provisional figures

Note : n.a. Not applicable

Table 5. IMPORTED ITEMS UNDERLYING INDEX
(Base Period : Average Prices February 2016 = 100)

	All Items	Food and Non Alcoholic Beverages	Alcoholic Beverages, Tobacco and Narcotics	Clothing and Footwear	Housing, Water , Electricity, Gas and other Fuels	Furnishings, Household Equipment and Maintenance	Health	Transport	Communication	Recreation and Culture	Education	Restaurants	Miscellaneous goods and services
Weights	401.2	269.1	n.a	15.2	24.2	26.9	2.5	23.0	n.a	5.6	n.a	n.a	34.7
Ave - 2020	107.6	112.2		93.2	93.7	97.7	95.8	110.4		87.6			98.0
Ave - 2021	112.3	118.4		100.9	94.5	98.7	108.0	114.4		87.3			95.9
Ave - 2022	126.8	136.3		114.6	110.2	105.7	100.9	115.7		90.4			102.0
2022													
June	124.1	132.3		115.3	111.5	107.1	88.1	114.6		91.2			101.0
July	130.9	141.9		115.4	111.2	107.7	105.0	114.6		89.9			102.5
August	135.0	147.3		115.8	111.9	109.2	114.0	116.1		91.7			105.3
September	139.0	153.2		115.1	112.6	108.4	101.1	117.5		91.4			105.4
October	136.4	149.4		115.4	112.2	109.0	95.3	117.6		87.8			105.8
November	128.9	138.2		114.1	112.9	107.4	97.4	117.8		91.2			106.9
December	126.2	134.4		114.2	112.4	106.8	97.4	117.8		91.3			106.7
2023													
January	135.2	147.5		114.3	112.9	106.9	97.4	117.8		92.8			108.0
February	140.7	155.5		113.8	112.9	107.6	97.4	117.8		92.8			108.5
March	140.1	154.0		116.6	114.3	107.2	92.9	118.2		92.8			111.9
April	140.7	154.6		117.3	114.2	107.3	92.9	119.9		95.3			112.1
May	141.0	154.5		117.5	113.9	107.6	92.9	125.8		91.7			113.1
June (P)	144.4	158.4		117.8	125.8	107.6	94.1	125.8		91.7			112.7
<u>Percentage Change (P)</u>													
Jun 2023 over Jun 2022	16.3%	19.8%		2.2%	12.9%	0.4%	6.8%	9.8%		0.5%			11.6%
Jun 2023 over May 2023	2.4%	2.5%		0.2%	10.5%	0.0%	1.3%	0.0%		0.0%			-0.3%

Source : Samoa Bureau Statistics

(P) : Provisional figures

Note : n.a. Not applicable

Table 6. LOCAL GOODS COMPONENT OF THE CONSUMER PRICE INDEX

(Base Period : Average Prices February 2016 = 100)

Group	All Items	Food and Non Alcoholic Beverages	Alcoholic Beverages, Tobacco and Narcotics	Clothing and Footwear	Housing, Water , Electricity, Gas and other Fuels	Furnishings, Household Equipment and Maintenance	Health	Transport	Communication	Recreation and Culture	Education	Restaurants	Miscellaneous goods and services
Weights	505.3	134.6	104.6	6.0	91.3	3.9	2.2	59.9	51.5	0.4	19.7	22.4	8.8
Ave - 2020	105.3	106.8	120.7	94.2	87.6	100.3	103.0	100.1	104.2	100.0	114.9	109.4	102.3
Ave - 2021	105.9	105.6	122.2	93.8	90.3	100.3	103.0	99.6	107.1	100.0	109.9	111.2	102.3
Ave - 2022	112.6	122.8	123.6	92.1	84.2	100.6	103.0	104.3	124.5	100.0	109.4	126.2	102.3
2022													
April	108.6	115.8	123.1	94.2	83.9	100.5	103.0	98.2	115.8	100.0	109.4	118.3	102.3
May	109.0	116.9	123.5	94.2	83.9	100.5	103.0	98.2	115.8	100.0	109.4	118.3	102.3
June	111.2	122.4	123.6	94.2	83.9	100.5	103.0	100.1	115.8	100.0	109.4	128.3	102.3
July	114.4	123.9	123.9	90.4	83.9	100.6	103.0	107.9	133.7	100.0	109.4	128.5	102.3
August	116.4	129.5	124.4	90.6	84.7	100.6	103.0	110.6	133.7	100.0	109.4	129.2	102.3
September	117.1	129.9	124.4	89.8	84.7	100.8	103.0	113.7	133.7	100.0	109.4	133.8	102.3
October	115.9	126.7	124.3	91.1	84.7	100.9	103.0	110.6	133.7	100.0	109.4	133.2	102.3
November	115.5	126.3	124.4	88.3	84.7	101.0	103.0	109.7	132.0	100.0	109.4	135.1	102.3
December	117.5	134.6	123.9	90.1	84.7	101.0	103.0	107.8	132.0	100.0	109.4	135.1	102.3
2023													
January	118.6	138.4	124.5	90.7	84.7	100.9	103.0	108.2	132.0	100.0	109.4	135.1	102.3
February	118.0	137.5	124.9	90.7	84.7	100.9	103.0	108.9	132.0	100.0	96.3	135.1	102.3
March	119.1	139.0	126.7	93.0	84.7	101.1	103.0	108.4	132.0	100.0	96.3	140.1	107.0
April	122.8	152.7	126.8	93.6	84.7	101.1	103.0	108.4	132.0	100.0	96.3	140.1	107.0
May	121.8	147.9	126.7	93.6	84.7	101.1	103.0	111.3	132.0	100.0	96.3	140.1	107.0
June (P)	123.9	155.1	126.9	93.6	85.0	101.2	103.0	112.1	132.0	100.0	96.3	140.1	107.0
<u>Percentage Change (P)</u>													
Jun 2023 over Jun 2022	11.5%	26.7%	2.7%	-0.6%	1.3%	0.7%	0.0%	12.1%	14.0%	0.0%	-12.0%	9.2%	4.6%
Jun 2023 over May 2023	1.7%	4.9%	0.2%	0.0%	0.4%	0.1%	0.0%	0.8%	0.0%	0.0%	0.0%	0.0%	0.0%

Source : Samoa Bureau Statistics

(P) : Provisional figures

Table 7. LOCAL ITEMS UNDERLYING INDEX
(Base Period : Average Prices February 2016 = 100)

Group	All Items	Food and Non Alcoholic Beverages	Alcoholic Beverages, Tobacco and Narcotics	Clothing and Footwear	Housing, Water , Electricity, Gas and other Fuels	Furnishings, Household Equipment and Maintenance	Health	Transport	Communication	Recreation and Culture	Education	Restaurants	Miscellaneous goods and services
Weights	185.5	76.1	n.a	6.0	n.a	3.9	1.0	3.4	51.5	n.a	12.3	22.4	8.8
Ave - 2020	104.6	101.9		94.2		100.3	106.3	108.6	104.2		120.6	109.4	102.3
Ave - 2021	105.1	102.1		93.8		100.3	106.3	108.6	107.1		112.7	111.2	102.3
Ave - 2022	114.3	108.1		92.1		100.6	106.3	114.4	124.5		111.9	126.2	102.3
2022													
April	108.7	102.6		94.2		100.5	106.3	114.4	115.8		111.9	118.3	102.3
May	109.0	103.5		94.2		100.5	106.3	114.4	115.8		111.9	118.3	102.3
June	112.7	109.5		94.2		100.5	106.3	114.4	115.8		111.9	128.3	102.3
July	117.8	109.9		90.4		100.6	106.3	114.4	133.7		111.9	128.5	102.3
August	117.9	109.9		90.6		100.6	106.3	114.4	133.7		111.9	129.2	102.3
September	119.2	111.8		89.8		100.8	106.3	114.4	133.7		111.9	133.8	102.3
October	119.5	112.7		91.1		100.9	106.3	114.4	133.7		111.9	133.2	102.3
November	119.8	114.2		88.3		101.0	106.3	114.4	132.0		111.9	135.1	102.3
December	120.3	115.2		90.1		101.0	106.3	114.4	132.0		111.9	135.1	102.3
2023													
January	120.2	114.9		90.7		100.9	106.3	114.4	132.0		111.9	135.1	102.3
February	120.7	116.3		90.7		100.9	106.3	114.4	132.0		111.9	135.1	102.3
March	122.3	117.9		93.0		101.1	106.3	114.4	132.0		111.9	140.1	107.0
April	122.6	118.6		93.6		101.1	106.3	114.4	132.0		111.9	140.1	107.0
May	122.4	118.2		93.6		101.1	106.3	114.4	132.0		111.9	140.1	107.0
June (P)	123.2	120.1		93.6		101.2	106.3	114.4	132.0		111.9	140.1	107.0
<u>Percentage Change (P)</u>													
Jun 2023 over Jun 2022	9.3%	9.6%		-0.6%		0.7%	0.0%	0.0%	14.0%		0.0%	9.2%	4.6%
Jun 2023 over May 2023	0.6%	1.6%		0.0%		0.1%	0.0%	0.0%	0.0%		0.0%	0.0%	0.0%

Source : Samoa Bureau Statistics

(P) : Provisional figures

Note : n.a. Not applicable

Table 8. CONSUMER PRICE INDEX (AVERAGE ANNUAL INFLATION RATE).

(Base Period : Average Prices February 2016 = 100)

	All Items	Food and Non Alcoholic Beverages	Alcoholic Beverages, Tobacco and Narcotics	Clothing and Footwear	Housing, Water, Electricity, Gas and other Fuels	Furnishings, Household Equipment, and Maintenance	Health	Transport	Communication	Recreation and Culture	Education	Restaurants	Miscellaneous goods and services
<i>Weights</i>	1000.0	403.7	128.4	21.2	119.6	30.8	4.6	148.5	51.5	6.1	19.7	22.4	43.5
2019	1.0	1.0	4.1	-1.6	4.4	-1.6	3.1	-3.2	0.9	-4.2	2.8	4.4	0.0
2020	-1.6	-1.5	2.7	-0.3	-5.7	1.8	-0.9	-6.1	0.0	-0.3	1.2	5.9	1.0
2021	3.1	3.4	1.3	5.8	3.1	0.9	6.5	7.0	2.8	-0.3	-4.3	1.7	-1.6
2022	11.0	15.5	1.0	9.5	0.8	6.2	-3.6	17.3	16.2	3.2	-0.4	13.5	5.0
2022													
January	4.5	5.3	1.2	6.9	5.3	0.7	6.5	9.2	3.7	0.1	-4.7	2.0	-1.9
February	5.7	7.0	1.1	8.4	6.6	1.0	6.5	11.0	4.7	0.4	-4.3	2.4	-1.9
March	6.7	8.5	1.0	10.0	7.8	1.2	5.8	12.5	5.6	1.1	-4.0	2.7	-1.7
April	7.6	10.0	0.9	11.5	7.8	1.3	5.1	13.8	6.5	1.6	-3.6	3.0	-1.4
May	8.2	11.0	0.8	13.1	7.9	1.7	3.8	14.1	7.4	1.9	-3.2	3.4	-0.9
June	8.8	12.2	0.6	14.5	6.3	2.4	2.4	14.6	8.4	2.0	-2.8	4.5	-0.1
July	9.5	13.6	0.7	13.6	4.7	3.1	1.7	15.3	10.7	2.1	-2.4	5.6	0.7
August	10.3	14.9	0.8	12.9	3.2	3.8	1.0	16.9	13.1	2.5	-2.0	6.7	1.5
September	11.0	16.2	0.9	12.1	1.9	4.4	-0.1	17.5	15.5	2.9	-1.6	8.4	2.3
October	11.3	16.8	0.9	11.3	0.1	5.1	-1.5	17.9	15.8	2.8	-1.2	10.0	3.2
November	11.3	16.3	1.0	10.4	0.6	5.7	-2.7	18.2	16.0	3.0	-0.8	11.8	4.1
December	11.0	15.5	1.0	9.5	0.8	6.2	-3.6	17.3	16.2	3.2	-0.4	13.5	5.0
2023													
January	11.0	15.6	1.1	8.4	0.5	6.5	-4.4	16.7	16.4	3.4	0.0	14.1	6.0
February	11.2	16.2	1.2	6.9	0.6	6.6	-5.5	16.2	16.6	3.7	-1.0	14.8	6.8
March	11.5	16.9	1.3	5.5	0.6	6.5	-5.6	15.6	16.8	3.4	-2.0	15.7	7.7
April	11.7	17.7	1.4	4.3	0.5	6.5	-5.4	14.6	17.0	3.2	-3.0	16.7	8.4
May	12.0	18.5	1.4	3.0	0.3	6.6	-4.5	13.9	17.2	3.0	-4.0	17.7	9.0
June (P)	12.0	19.1	1.3	1.9	0.8	5.9	-3.5	12.0	17.4	2.8	-5.0	17.1	9.4

Source : Samoa Bureau Statistics

(P) : Provisional figures

Table 9 Consumer Price Index (Percentage change and Average Annual Inflation)

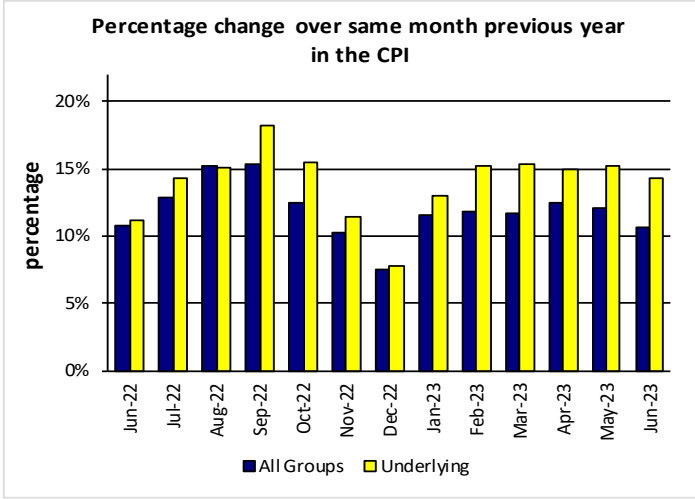
(Base Period: Average Prices February 2016 = 100)

	CPI ALL ITEMS	Percentage change over previous month	Last 12 months over previous 12 months	UNDERLYING ALL ITEMS	Percentage change over previous month	Last 12 months over previous 12 months	LOCAL COMPONENT	Percentage change over previous month	Last 12 months over previous 12 months	IMPORTED COMPONENT	Percentage change over previous month	Last 12 months over previous 12 months
2019	108.3	-	1.0	107.2	-	0.5	105.5	-	2.8	111.1	-	-0.7
2020	106.6	-	-1.6	106.6	-	-0.5	105.3	-	-0.2	107.9	-	-2.9
2021	109.9	-	3.1	110.1	-	3.2	105.9	-	0.6	114.0	-	5.7
2022	122.0	-	11.0	122.9	-	11.6	112.6	-	6.3	131.5	-	15.3
2022												
March	116.2	0.7	6.7	116.6	0.0	6.2	108.9	0.4	2.7	123.6	1.0	10.8
April	117.2	0.9	7.6	117.4	0.7	7.0	108.6	-0.3	3.1	126.0	2.0	12.1
May	117.3	0.1	8.2	117.3	-0.1	7.6	109.0	0.4	3.6	125.8	-0.2	12.7
June	121.0	3.2	8.8	120.5	2.7	8.4	111.2	2.0	3.9	131.1	4.2	13.6
July	125.3	3.6	9.5	126.7	5.2	9.4	114.4	2.9	4.4	136.6	4.2	14.5
August	129.9	3.6	10.3	129.6	2.3	10.4	116.4	1.8	4.9	143.6	5.1	15.6
September	130.1	0.2	11.0	132.7	2.4	11.4	117.1	0.6	5.5	143.3	-0.2	16.4
October	127.7	-1.8	11.3	131.1	-1.2	11.9	115.9	-1.1	5.7	139.8	-2.4	16.6
November	124.6	-2.5	11.3	126.0	-3.8	12.0	115.5	-0.3	6.0	133.8	-4.3	16.4
December	124.0	-0.4	11.0	124.4	-1.3	11.6	117.5	1.7	6.3	130.7	-2.3	15.3
2023												
January	128.2	3.3	11.0	130.5	4.9	11.9	118.6	1.0	6.7	137.9	5.5	15.1
February	129.0	0.6	11.2	134.4	3.0	12.3	118.0	-0.5	7.1	140.2	1.6	15.1
March	129.8	0.6	11.5	134.5	0.1	12.9	119.1	0.9	7.5	140.7	0.4	15.2
April	131.8	1.6	11.7	135.0	0.4	13.4	122.8	3.1	8.2	141.1	0.2	15.1
May	131.5	-0.2	12.0	135.2	0.1	13.9	121.8	-0.8	8.7	141.5	0.3	15.0
June (P)	133.9	1.8	12.0	137.7	1.9	14.2	123.9	1.7	9.2	144.2	1.9	14.5

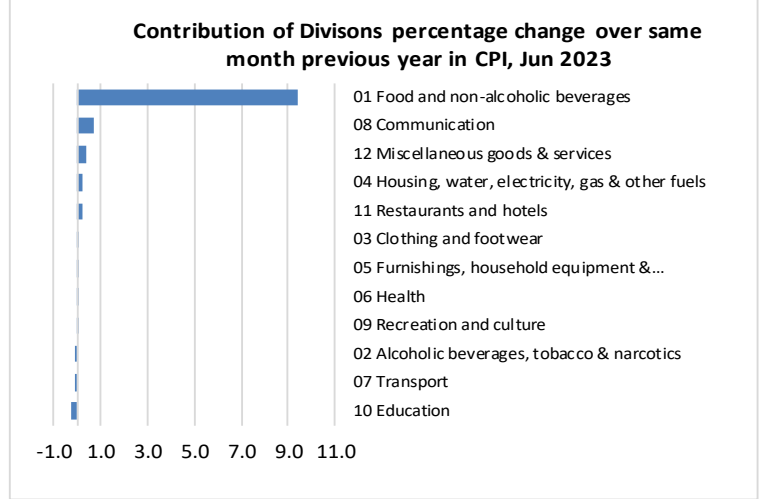
Source : Samoa Bureau Statistics

(P) : Provisional figures

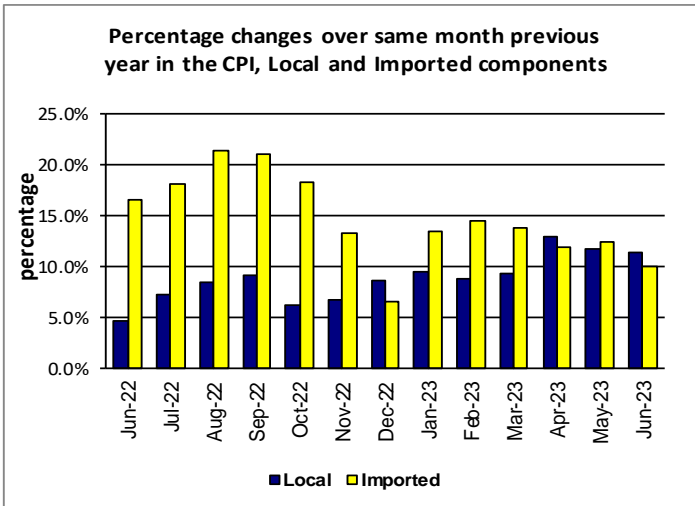
Graph.5



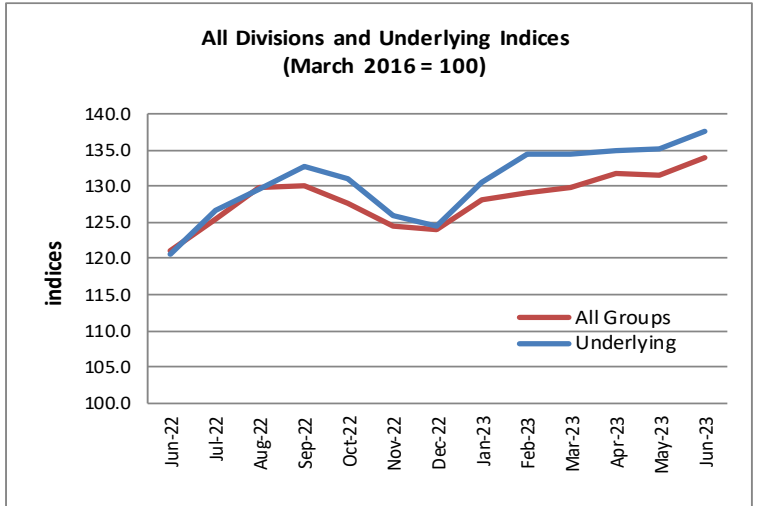
Graph.6



Graph.7



Graph.8



Graph.9

