

Please address all correspondence
To Government Statistician
In reply, please quote the file reference



File Ref: CPI 7/2022

GOVERNMENT OF SAMOA

SAMOA BUREAU OF STATISTICS

CONSUMER PRICE INDEX JULY 2022

Key findings:

The Consumer Price Index for July 2022 increased by 3.6 percent compared to the previous month.

- The Communication index increased by 15.5 percent.
- The Health index increased by 9.4 percent.
- The Food & Non Alcoholic Beverages index also increased by 5.4 percent.

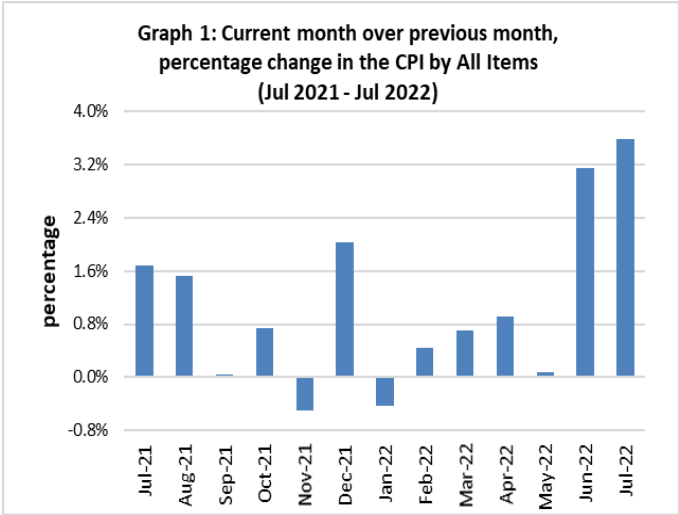
The Average Annual Inflation for the year ended July 2022 was 9.5 percent.

The CPI went up by 12.9 percent compared to July 2021.

SUMMARY

The Consumer Price Index (CPI) for July 2022 increased 3.6 percent compared to June 2022 and further went up by 12.9 percent in comparison to July 2021. This was mainly influenced by the increase in the Imported Goods Component by 4.2 percent from the previous month, as a result of higher prices for imported food, medicine (amoxicillin), toiletries, bathroom products and child care products.

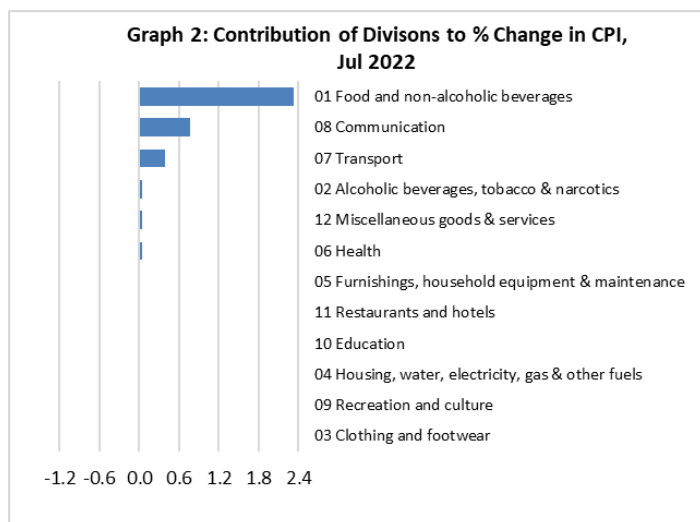
The Local Goods Component also contributed to the increase when it went up by 2.9 percent as a result of higher prices for local food, mobile phone calling per minute, internet data bundle, and airline fare (Apia-Pago-Apia). Graph 1 shows the month to month percentage changes in the Consumer Price Index by all Divisions from July 2021 to July 2022.



Source : Samoa Bureau of Statistics

Total All Divisions Contribution

As depicted in Graph 2, Food & Non Alcoholic Beverages was the largest contributor to the 3.6 percent rise in the CPI in July 2022, with a contribution of 2.3 percentage-points (pp) to the overall increase in July 2022. The most significant drivers of this within the group were chicken leg quarter (up 17.2%), raw sugar (up 9.7%), taro (3.9%) and cooking oil (up 41.3%). The next largest contributor was Communication with a contribution of 0.8 pp, increasing 15.5% compared to June 2022. The greatest drivers of this increase were mobile phone calling per minute and internet which rose 37.2% and 32.0% respectively from the previous month. Transport also contributed 0.4 pp due to the increase in airline fares.

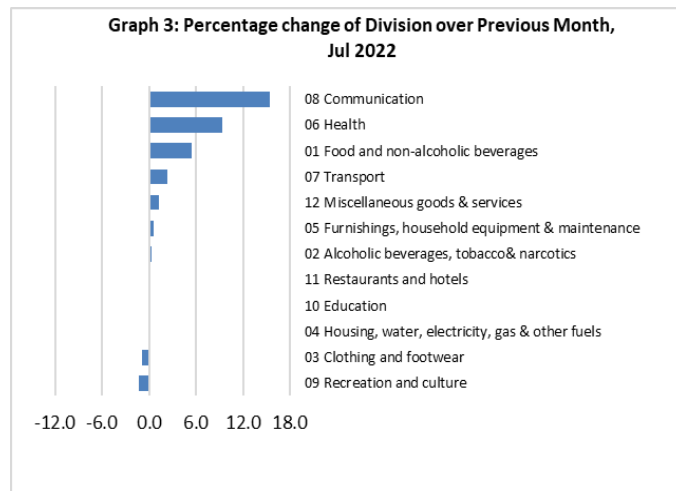


Source : Samoa Bureau of Statistics

Consumer Price Index (% Change)

Graph 3 shows the percentage change for all Divisions (groups) in July 2022 in comparison to June 2022. Communication had the largest increase of 15.5 percent followed by Health which rose 9.4 percent and Food & Non-alcoholic beverages increasing 5.4 percent. Other groups such as Transport, Miscellaneous Goods & Services, Furnishing, Household Equipment & Maintenance, Alcoholic Beverages & Tobacco and Restaurant recorded increases of 2.3, 1.2, 0.5, 0.3 and 0.2 percent respectively.

On the other hand, Recreation & Culture fell 1.4 percent followed by Clothing & Footwear and Housing, Water, Electricity, Gas & other Fuels with respective decreases of 0.9 and 0.1 percent. No changes were recorded for the Education index.



Source : Samoa Bureau of Statistics

Imported Goods Component

The Imported goods component of the Consumer Price Index registered an increase of 4.2 percent when compared to the previous month. This increase was mainly due to higher prices recorded for imported food, medicine, toilet paper, hair gel and diapers.

Local Goods Component

Increased prices recorded for mobile phone calling per minute, internet data bundle, airline fare (Apia-Pago-Apia) and local food have resulted in the 2.9 percent increase in the local goods component.

Communication Index

The Communication index recorded an increase of 15.5 percent due to the rise in prices for mobile phone calling per minute (24.1%) and internet data bundle (15.8%).

Health Index

The 9.4 percent increase in the Health index was influenced by higher prices recorded for medicine amoxicillin tablets (22.5%).

Food and Non Alcoholic Beverages Index

An increase of 5.4 percent in the Food & Non Alcoholic Beverages index was a reflection of higher prices recorded for chicken leg quarter (17.2%), raw sugar (9.7%), taro (3.9%), Maggie Noodle (4.0%), fresh fish large (6.5%), vegetable oil (41.3%), koko Samoa (11.6%) and corned beef (6.2%).

Transport Index

The 71.1 percent increase in prices of airline fares (Apia-Pago-Apia) led to the 2.3 percent increase in the Transport index.

Miscellaneous Goods and Services Index

Higher prices recorded for diaper (7.5%), hair gel (2.1%) and toilet paper (1.1%) were reflected in the 1.2 percent increase in the Miscellaneous Goods and Services index.

Furnishings, Household Equipment, and Maintenance Index

Increased prices recorded for washing soap (up 5.9%), mosquito coil (up 1.7%) and clothing chest (up 2.3%) have resulted in the 0.5 percent increase in the Furnishing, Household, Equipment & Maintenance index.

Recreation and Culture Index

The Recreation and Culture index recorded a decrease of 1.4 percent due to the decline in prices recorded for exercise book (4.1%).

Clothing and Footwear Index

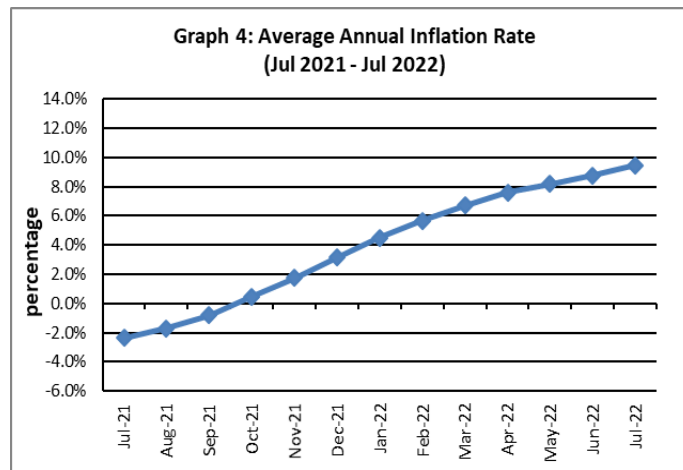
Clothing and footwear prices for July 2022 showed a decrease of 0.9 percent compared to the month of June 2022 mainly due to the increase in the prices for aloha shirts, cargo shorts and ie faitaga (lavalava).

Underlying Indices ^{1/}

The All Items Underlying Index for July 2022 registered an increase of 5.2 percent when compared to June 2022. It further increased by 14.3 percent when compared to July 2021. Both the Imported and Local Items Underlying Indices recorded increases of 5.4 percent and 4.5 percent respectively.

Inflation Rate

The average annual inflation rate for the year ended July 2022 was 9.5 percent. This was the biggest increase in the last 13 fiscal years ending July. The annual inflation for the year ending July 2021 was negative 2.4 percent. Presented in Graph 4 is the average annual inflation rate from July 2021 to July 2022.



Source : Samoa Bureau of Statistics

The attached Tables and Graphs provide the users with more detailed analysis.

Technical Notes:

The Consumer Price (CPI) measures the rate of inflation for Samoa. It is designed to measure the change in prices for the goods purchased by households in Samoa. The CPI measures the change in prices by comparing the prices for a basket of goods and services at the collection period with the price for the same goods in a base period.

The basket of goods that is priced is based on the average expenditures of households as recorded in the Household Income and Expenditure Survey (HIES). The HIES survey identifies how much households spend on different items. The more households spend on an item on average, the more important it is to the price index, and the higher the weight in the index.

^{1/} Monthly movements in the 'headline' CPI series can be volatile. This volatility reflects price changes in particular items that may be due, among other factors, to fluctuations in commodity markets and agricultural conditions, policy changes, or seasonal or infrequent price resetting.

Underlying inflation is a measure of inflation that excludes certain items that face volatile price movements. Underlying inflation eliminates products that can have temporary price shocks because these shocks can diverge from the overall trend of inflation and give a false measure of inflation.

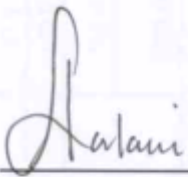
SAMOA BUREAU OF STATISTICS

*Economic Statistics Division
FMFM II Building, Level 1
P O Box 1151
Apia, Samoa*

*Phone: (685) 62014/62015
Fax: (685) 24675
E-mail: info.stats@sbs.gov.ws
Website: www.sbs.gov.ws*

Date of release: 24th August 2022

*The next Consumer Price Index will be released on 20th
September 2022.*



Leota Aliielua Salani
GOVERNMENT STATISTICIAN/CEO

Table 1. CONSUMER PRICE INDEX.

(Base Period : Average Prices February 2016 = 100)

Group	All Items	Food and Non Alcoholic Beverages	Alcoholic Beverages, Tobacco and Narcotics	Clothing and Footwear	Housing, Water, Electricity, Gas and other Fuels	Furnishings, Household Equipment, and Maintenance	Health	Transport	Communication	Recreation and Culture	Education	Restaurants	Miscellaneous goods and services
<i>Weights</i>	1000.0	403.7	128.4	21.2	119.6	30.8	4.6	148.5	51.5	6.1	19.7	22.4	43.5
<i>Ave - 2019</i>	108.3	112.1	116.8	93.8	95.0	96.4	100.0	111.3	104.2	88.7	113.5	103.3	97.8
<i>Ave - 2020</i>	106.6	110.4	120.0	93.5	89.6	98.1	99.2	104.4	104.2	88.5	114.9	109.4	98.8
<i>Ave - 2021</i>	109.9	114.1	121.6	98.9	92.4	98.9	105.7	111.7	107.1	88.2	109.9	111.2	97.2
<i>2021</i>													
July	111.0	115.3	121.8	104.9	97.5	98.3	105.0	112.5	104.2	88.8	109.4	111.0	96.8
August	112.7	118.5	121.4	104.8	98.8	98.9	107.0	114.1	104.2	88.3	109.4	111.4	97.1
September	112.8	117.9	121.6	104.5	98.9	99.2	107.0	115.9	104.2	88.3	109.4	111.4	96.9
October	113.6	118.1	121.6	104.9	101.0	98.9	107.0	115.1	115.9	89.0	109.4	111.4	96.9
November	113.0	120.1	121.6	105.1	88.9	98.7	107.0	115.5	115.9	89.0	109.4	111.7	96.9
December	115.3	123.1	121.7	105.1	90.5	99.7	107.0	121.3	115.9	89.0	109.4	111.7	97.1
<i>2022</i>													
January	114.8	122.3	121.7	106.4	90.2	100.7	107.0	119.0	115.8	89.0	109.4	118.3	97.2
February	115.3	123.8	122.1	108.6	90.3	102.0	109.9	117.0	115.8	89.0	109.4	118.3	97.6
March	116.2	124.0	122.6	108.9	90.6	103.2	101.5	120.8	115.8	91.8	109.4	118.3	99.1
April	117.2	124.5	122.4	108.8	92.3	102.5	99.9	125.2	115.8	91.8	109.4	118.3	99.8
May	117.3	124.5	122.6	109.4	92.4	102.5	95.1	125.4	115.8	91.8	109.4	118.3	101.4
June	121.0	129.0	122.6	109.3	93.6	106.3	95.1	134.8	115.8	91.8	109.4	128.3	101.2
July (P)	125.3	135.9	123.0	108.4	93.6	106.8	104.1	137.9	133.7	90.6	109.4	128.5	102.5
<u>Percentage Change (P)</u>													
Jul 2022													
over Jun 2022	3.6%	5.4%	0.3%	-0.9%	-0.1%	0.5%	9.4%	2.3%	15.5%	-1.4%	0.0%	0.2%	1.2%
Jul 2022													
over Jul 2021	12.9%	17.9%	1.1%	3.3%	-4.0%	8.7%	-0.9%	22.6%	28.4%	2.0%	0.0%	15.8%	5.9%

Source : Samoa Bureau Statistics

(P) : Provisional figures

■ Revised figure

Table 2. ALL ITEMS UNDERLYING INDEX

(Base Period : Average Prices February 2016 = 100)

Group	All Items	Food and Non Alcoholic Beverages	Alcoholic Beverages, Tobacco and Narcotics	Clothing and Footwear	Housing, Water, Electricity, Gas and other Fuels	Furnishings, Household Equipment, and Maintenance	Health	Transport	Communication	Recreation and Culture	Education	Restaurants	Miscellaneous goods and services
Weights	586.7	345.3	n.a	21.2	24.2	30.8	3.5	26.4	51.5	5.6	12.3	22.4	43.5
Ave - 2019	107.2	111.6		93.8	94.6	96.4	100.1	108.1	104.2	87.9	118.5	103.3	97.8
Ave - 2020	106.6	109.9		93.5	93.7	98.1	98.9	110.1	104.2	87.6	120.6	109.4	98.8
Ave - 2021	110.1	114.8		98.9	94.5	98.9	107.5	113.6	107.1	87.3	112.7	111.2	97.2
2021													
July	110.9	116.6		104.9	93.0	98.3	106.7	113.5	104.2	88.0	111.9	111.0	96.8
August	112.6	119.4		104.8	93.7	98.9	109.3	113.5	104.2	87.4	111.9	111.4	97.1
September	112.3	118.8		104.5	94.0	99.2	109.3	113.5	104.2	87.4	111.9	111.4	96.9
October	113.5	118.8		104.9	97.5	98.9	109.3	113.8	115.9	88.1	111.9	111.4	96.9
November	113.1	117.9		105.1	99.2	98.7	109.3	113.8	115.9	88.1	111.9	111.7	96.9
December	115.4	121.4		105.1	104.7	99.7	109.3	113.8	115.9	88.1	111.9	111.7	97.1
2022													
January	115.4	120.9		106.4	104.5	100.7	109.3	114.4	115.8	88.1	111.9	118.3	97.2
February	116.6	122.4		108.6	105.4	102.0	113.2	114.5	115.8	88.1	111.9	118.3	97.6
March	116.6	122.1		108.9	105.1	103.2	102.0	114.5	115.8	91.2	111.9	118.3	99.1
April	117.4	123.1		108.8	111.5	102.5	99.9	114.5	115.8	91.2	111.9	118.3	99.8
May	117.3	122.8		109.4	111.8	102.5	93.5	114.5	115.8	91.2	111.9	118.3	101.4
June	120.5	127.2		109.3	111.5	106.3	93.5	114.5	115.8	91.2	111.9	128.3	101.2
July (P)	126.7	134.9		108.4	111.2	106.8	105.4	114.6	133.7	89.9	111.9	128.5	102.5
<u>Percentage Change (P)</u>													
Jul 2022													
over	5.2%	6.0%		-0.9%	-0.3%	0.5%	12.7%	0.0%	15.5%	-1.5%	0.0%	0.2%	1.2%
Jun 2022													
Jul 2022													
over	14.3%	15.7%		3.3%	19.5%	8.7%	-1.2%	1.0%	28.4%	2.2%	0.0%	15.8%	5.9%
Jul 2021													

Source : Samoa Bureau Statistics

(P) : Provisional figures

Note : n.a. Not applicable

Table 3. AVERAGE RETAIL PRICES OF SELECTED COMMODITIES

Commodities	Wt	Unit	2021			2022			Jul-22	
			May	June	July	May	June	July (P)	% chng from prev mnth	%chng from Jul 21
01 Food and non-alcoholic beverages										
Leg Quarters Chicken	62.2	kg	4.39	4.49	4.93	4.88	5.27	6.17	17.2%	25.3%
Raw Sugar	21.3	kg	2.67	2.78	2.80	3.01	2.85	3.12	9.7%	11.5%
Bread	17.2	loaf	1.64	1.64	1.64	1.66	1.75	1.78	1.8%	8.9%
Corned Beef (a)	15.9	340 grms	8.58	8.55	8.55	9.02	9.02	9.02	0.0%	5.5%
Taro	15.2	kg	1.69	1.88	2.00	3.36	3.98	4.14	3.9%	106.9%
Re-packed medium grain rice	13.4	kg	2.75	2.73	2.63	3.14	3.14	3.15	0.3%	19.7%
Prepacked medium grain rice (a)	13.4	907 grms	2.77	2.77	2.77	2.80	2.88	2.88	0.0%	4.2%
Canned fish betw een \$3.00 and \$3.99 Natural Oil	12.7	425 grms	3.26	3.25	3.22	3.17	3.22	3.25	0.9%	0.8%
Bongo	10.2	20 grms	0.81	0.81	0.80	0.82	0.84	0.85	1.2%	6.3%
Keke Saina Biscuits (a)	9.2	pkt 10	6.17	6.17	6.13	6.21	6.29	6.29	0.0%	2.7%
Ice Cream (a)	9.2	2 ltr	15.33	15.52	15.52	16.85	17.02	17.08	0.4%	10.1%
Ramen	9.0	85 grms	1.06	1.06	1.11	1.11	1.11	1.16	4.0%	4.0%
Fish (Pce)	7.9	kg	20.64	24.18	24.64	23.90	24.78	24.75	-0.1%	0.5%
Butter	7.7	454 grms	16.07	16.06	16.06	16.80	18.31	18.47	0.9%	15.0%
Round Pancake (a)	7.5	sml	0.15	0.15	0.15	0.15	0.20	0.20	0.0%	33.3%
Mutton Flaps	6.6	kg	25.14	22.54	22.90	26.05	25.32	25.22	-0.4%	10.1%
Canned fish \$4:00 or over N/Oil	6.4	425 grms	4.73	4.73	4.89	4.70	4.67	4.74	1.5%	-3.1%
Canned fish under \$3.00 in N/Oil	6.4	425 grms	2.52	2.48	2.68	3.00	3.12	2.85	-8.6%	6.2%
Wings Turkey	6.3	kg	8.95	8.83	8.63	12.46	12.64	12.46	-1.4%	44.5%
Fish (string)	6.0	kg	9.17	10.18	11.11	12.11	11.25	11.55	2.7%	3.9%
Fish (large)	6.0	kg	14.44	15.86	15.67	20.29	18.94	20.18	6.5%	28.8%
Cooking vegetable oil (a)	5.9	ltr	4.43	4.59	5.03	7.48	7.61	10.75	41.3%	113.9%
02 Alcoholic beverages, tobacco and narcotics										
Lager Beer	37.9	355 mls	3.64	3.65	3.66	3.76	3.76	3.76	0.0%	2.7%
Pall Mall Filter Cigarettes (Red)	24.3	20 rolls	14.60	14.60	14.60	14.60	14.60	14.60	0.0%	0.0%
Pall Mall Menthol Cigarettes (Green)	24.3	20 rolls	14.60	14.60	14.60	14.60	14.60	14.60	0.0%	0.0%
Beer (a)	16.3	330 mls	3.50	3.50	3.53	3.56	3.60	3.68	2.1%	4.3%
Tobacco (a)	12.6	30 grms	15.00	15.00	15.00	15.00	15.00	15.00	0.0%	0.0%
03 Clothing and footwear										
Uniform le Faitaga College boys	4.3	size 8-10	29.67	29.67	37.00	38.33	38.33	38.33	0.0%	3.6%
Uniform Pa've (a)	3.7	size 7	29.67	29.67	37.33	42.67	42.67	42.67	0.0%	14.3%
04 Housing, water, electricity, gas and other fuels										
Electricity Cashpow er	50.6	kw h	0.50	0.67	0.67	0.58	0.58	0.58	0.0%	-14.2%
Reservoir treated Water	28.5	15-40 m3	1.67	1.67	1.67	1.34	1.34	1.34	0.0%	-19.8%
Liquid gas	15.8	9kg	59.00	59.25	59.25	72.55	72.05	71.80	-0.3%	21.2%
Government house Rent	12.2	2 b/room	650.00	650.00	650.00	650.00	650.00	650.00	0.0%	0.0%
05 Furnishings, household equipment and routine household maintenance										
Washing pow der (a)	6.3	200 grms	1.93	1.87	1.87	2.00	2.06	1.98	-3.8%	6.0%
Soap yellow Washing soap	5.9	bar	2.68	2.72	2.79	3.05	3.24	3.43	5.9%	22.8%
Mosquito coil	4.4	10 coil	1.33	1.33	1.30	1.38	1.45	1.48	1.7%	13.5%

06 Health

Amoxicillin 500mg tablets (a)	2.5	20 tablets	8.00	8.00	8.00	7.10	7.10	8.70	22.5%	8.8%
Hospital Charge	1.1	per night	22.50	22.50	22.50	22.50	22.50	22.50	0.0%	0.0%

07 Transport

Petrol	60.8	1 ltr	2.63	2.63	2.68	3.34	3.74	3.74	0.0%	39.5%
Taxi Fare P.O to Motootua Hosp	8.2	per trip	4.80	4.80	4.80	4.80	4.80	4.80	0.0%	0.0%
Taxi Fares P.O to Malua	8.2	per trip	31.30	31.30	31.30	31.30	31.30	31.30	0.0%	0.0%
Taxi Fares P.O to Falefa	8.2	per trip	43.20	43.20	43.20	43.20	43.20	43.20	0.0%	0.0%
Air Fares Faleolo-Pago-Faleolo	6.8	return trip	395.00	395.00	395.00	395.00	395.00	676.00	71.1%	71.1%
Air Fares Apia Auckland Apia	6.8	1 month	1257.87	1257.87	1257.87	1257.87	1459.44	1417.11	-2.9%	12.7%

08 Communication

Calling per minute Rate cell phone (a)	10.02	per minute	0.43	0.43	0.43	0.43	0.43	0.59	37.2%	37.2%
Internet data bundles per mb Rate (a)	10.02	per mb	0.25	0.25	0.25	0.25	0.25	0.33	32.0%	32.0%
Calling per minute Rate cell phone (a)	10.02	per minute	0.44	0.44	0.44	0.44	0.44	0.49	11.4%	11.4%
Internet data bundles per mb Rate (a)	10.02	per mb	0.20	0.20	0.20	0.32	0.32	0.33	3.1%	65.0%

09 Recreation and culture

Television LCD 32" (a)	2.30	LCD 32"	852.83	886.17	869.50	852.83	852.83	852.83	0.0%	-1.9%
Exercise Book w arw ick	1.44	1B4	1.45	1.45	1.45	1.62	1.62	1.55	-4.1%	6.9%
Laptop (a)	1.33	each	2898.60	2898.60	2898.60	2898.60	2898.60	2898.60	0.0%	0.0%

10 Education

Fees PTA Primary Y6 Urban Registration fees (a)	7.23	Year 6	72.50	72.50	72.50	72.50	72.50	72.50	0.0%	0.0%
Fees PTA Secondary Y10 Urban Registration fees	5.11	Year 10	58.00	58.00	58.00	58.00	58.00	58.00	0.0%	0.0%
Fees Tertiary NUS registration School Fees	3.79	registration	322.00	322.00	322.00	322.00	322.00	322.00	0.0%	0.0%
Fees Secondary Y Examination Fees (a)	3.61	Y12-13	25.50	25.50	25.50	25.50	25.50	25.50	0.0%	0.0%

11 Restaurants and hotels

Fish & Chip Meal	7.79	1 serve	10.08	10.08	10.08	10.17	10.75	10.92	1.6%	8.3%
Curry & Chopsuey Meal	4.87	1 serve	4.00	4.00	4.00	4.67	5.33	5.00	-6.3%	25.0%
Chicken & Chips Meal (a)	4.87	1 serve	10.29	10.29	10.29	10.43	11.21	11.36	1.3%	10.4%
Steam rice & chicken Meal (a)	4.87	1 serve	5.00	5.00	5.00	5.50	5.83	6.17	5.7%	23.3%

12 Miscellaneous goods and services

Paper Sofan deluxe ply Toilet Paper	8.52	250 sheets	1.00	0.93	0.98	1.13	1.13	1.14	1.1%	16.7%
Hair Gel	4.59	1124 ml	4.76	4.76	4.61	5.10	4.81	4.91	2.1%	6.5%
Price for Storage of remains (a)	4.41	per day	60.00	60.00	60.00	60.00	60.00	60.00	0.0%	0.0%
Basic Casket (a)	4.41	each	1966.67	1966.67	1966.67	1966.67	1966.67	1966.67	0.0%	0.0%
Standard Embalming (a)	4.41	1 person	1500.00	1500.00	1500.00	1500.00	1500.00	1500.00	0.0%	0.0%
Toilet soap (a)	4.38	90g	1.93	1.93	1.91	1.95	2.03	2.04	0.4%	6.7%
Diapers (a)	4.19	5kg-10kg	7.89	7.89	7.74	7.51	7.46	8.01	7.5%	3.5%

Source : Samoa Bureau Statistics

(a) : New commodity from February 2016

(P) : Provisional figures

Note : Please note unit of conversion was in pound's (lb's) but been converted into kilograms (kg)

Table 4. IMPORTED GOODS COMPONENT OF THE CONSUMER PRICE INDEX
(Base Period : Average Prices February 2016 = 100)

Group	All Items	Food and Non Alcoholic Beverages	Alcoholic Beverages, Tobacco and Narcotics	Clothing and Footwear	Housing, Water , Electricity, Gas and other Fuels	Furnishings, Household Equipment and Maintenance	Health	Transport	Communication	Recreation and Culture	Education	Restaurants	Miscellaneous goods and services
<i>Weights</i>	494.7	269.1	23.8	15.2	28.3	26.9	2.5	88.6	<i>n.a</i>	5.6	<i>n.a</i>	<i>n.a</i>	34.7
<i>Ave - 2019</i>	111.1	114.5	118.3	93.7	100.8	95.8	97.9	117.3		87.9			96.7
<i>Ave - 2020</i>	107.9	112.2	117.1	93.2	96.0	97.7	95.8	107.4		87.6			98.0
<i>Ave - 2021</i>	114.0	118.4	118.8	100.9	99.1	98.7	108.0	119.9		87.3			95.9
2021													
July	115.7	120.9	119.2	109.1	98.1	98.0	106.9	120.9		88.0			95.4
August	118.3	124.4	119.2	108.9	99.4	98.7	110.6	123.7		87.4			95.8
September	118.4	123.7	119.2	108.6	99.9	99.1	110.6	126.6		87.4			95.6
October	118.2	123.5	119.2	109.2	102.7	98.7	110.6	125.4		88.1			95.5
November	118.1	122.4	119.2	109.4	105.0	98.5	110.6	127.2		88.1			95.6
December	122.7	126.7	119.2	109.4	112.0	99.6	110.6	137.1		88.1			95.7
2022													
January	121.6	125.9	119.2	111.2	110.8	100.8	110.6	133.0		88.1			95.9
February	122.4	128.0	119.7	114.3	110.9	102.2	116.1	129.7		88.1			96.4
March	123.6	127.7	119.7	114.7	112.4	103.6	100.1	136.0		91.2			98.3
April	126.0	128.9	119.7	114.5	119.5	102.8	97.2	143.5		91.2			99.2
May	125.8	128.2	118.5	115.4	119.8	102.8	88.1	143.8		91.2			101.2
June	131.1	132.3	118.4	115.3	125.1	107.1	88.1	158.2		91.2			101.0
July (P)	136.6	141.9	119.1	115.4	124.9	107.7	105.0	158.2		89.9			102.5
<u>Percentage Change (P)</u>													
Jul 2022													
over	4.2%	7.3%	0.6%	0.1%	-0.2%	0.6%	19.2%	0.0%		-1.5%			1.5%
Jun 2022													
Jul 2022													
over	18.1%	17.4%	-0.1%	5.8%	27.3%	9.9%	-1.7%	30.9%		2.2%			7.5%
Jul 2021													

Source : Samoa Bureau Statistics

(P) : Provisional figures

Note : n.a. Not applicable

Table 5. IMPORTED ITEMS UNDERLYING INDEX

(Base Period : Average Prices February 2016 = 100)

Group	All Items	Food and Non Alcoholic Beverages	Alcoholic Beverages, Tobacco and Narcotics	Clothing and Footwear	Housing, Water , Electricity, Gas and other Fuels	Furnishings, Household Equipment and Maintenance	Health	Transport	Communication	Recreation and Culture	Education	Restaurants	Miscellaneous goods and services
Weights	401.2	269.1	n.a	15.2	24.2	26.9	2.5	23.0	n.a	5.6	n.a	n.a	34.7
Ave - 2019	108.9	114.5		93.7	94.6	95.8	97.9	108.1		87.9			96.7
Ave - 2020	107.6	112.2		93.2	93.7	97.7	95.8	110.4		87.6			98.0
Ave - 2021	112.3	118.4		100.9	94.5	98.7	108.0	114.4		87.3			95.9
2021													
July	114.1	120.9		109.1	93.0	98.0	106.9	114.2		88.0			95.4
August	116.6	124.4		108.9	93.7	98.7	110.6	114.2		87.4			95.8
September	116.1	123.7		108.6	94.0	99.1	110.6	114.2		87.4			95.6
October	116.2	123.5		109.2	97.5	98.7	110.6	114.6		88.1			95.5
November	115.6	122.4		109.4	99.2	98.5	110.6	114.5		88.1			95.6
December	118.9	126.7		109.4	104.7	99.6	110.6	114.5		88.1			95.7
2022													
January	118.5	125.9		111.2	104.5	100.8	110.6	114.4		88.1			95.9
February	120.3	128.0		114.3	105.4	102.2	116.1	114.6		88.1			96.4
March	120.2	127.7		114.7	105.1	103.6	100.1	114.6		91.2			98.3
April	121.4	128.9		114.5	111.5	102.8	97.2	114.6		91.2			99.2
May	121.2	128.2		115.4	111.8	102.8	88.1	114.6		91.2			101.2
June	124.1	132.3		115.3	111.5	107.1	88.1	114.6		91.2			101.0
July (P)	130.9	141.9		115.4	111.2	107.7	105.0	114.6		89.9			102.5
<u>Percentage Change (P)</u>													
Jul 2022 over Jun 2022	5.4%	7.3%		0.1%	-0.3%	0.6%	19.2%	0.0%		-1.5%			1.5%
Jul 2022 over Jul 2021	14.7%	17.4%		5.8%	19.5%	9.9%	-1.7%	0.4%		2.2%			7.5%

Source : Samoa Bureau Statistics

(P) : Provisional figures

Note : n.a. Not applicable

Table 6. LOCAL GOODS COMPONENT OF THE CONSUMER PRICE INDEX
(Base Period : Average Prices February 2016 = 100)

Group	All Items	Food and Non Alcoholic Beverages	Alcoholic Beverages, Tobacco and Narcotics	Clothing and Footwear	Housing, Water, Electricity, Gas and other Fuels	Furnishings, Household Equipment and Maintenance	Health	Transport	Communication	Recreation and Culture	Education	Restaurants	Miscellaneous goods and services
Weights	505.3	134.6	104.6	6.0	91.3	3.9	2.2	59.9	51.5	0.4	19.7	22.4	8.8
Ave - 2019	105.5	107.3	116.5	93.8	93.2	100.3	102.5	102.3	104.2	100.0	113.5	103.3	102.3
Ave - 2020	105.3	106.8	120.7	94.2	87.6	100.3	103.0	100.1	104.2	100.0	114.9	109.4	102.3
Ave - 2021	105.9	105.6	122.2	93.8	90.3	100.3	103.0	99.6	107.1	100.0	109.9	111.2	102.3
2021													
July	106.5	104.1	122.3	94.2	97.3	100.3	103.0	100.0	104.2	100.0	109.4	111.0	102.3
August	107.3	106.7	121.9	94.2	98.6	100.3	103.0	100.0	104.2	100.0	109.4	111.4	102.3
September	107.3	106.4	122.1	94.2	98.6	100.3	103.0	100.0	104.2	100.0	109.4	111.4	102.3
October	109.1	107.3	122.2	94.2	100.5	100.3	103.0	100.0	115.9	100.0	109.4	111.4	102.3
November	108.1	115.7	122.1	94.2	83.9	100.3	103.0	98.2	115.9	100.0	109.4	111.7	102.3
December	108.2	115.8	122.3	94.2	83.9	100.3	103.0	97.9	115.9	100.0	109.4	111.7	102.3
2022													
January	108.3	115.1	122.2	94.2	83.9	100.3	103.0	98.2	115.8	100.0	109.4	118.3	102.3
February	108.4	115.4	122.7	94.2	83.9	100.5	103.0	98.2	115.8	100.0	109.4	118.3	102.3
March	108.9	116.6	123.3	94.2	83.9	100.5	103.0	98.2	115.8	100.0	109.4	118.3	102.3
April	108.6	115.8	123.1	94.2	83.9	100.5	103.0	98.2	115.8	100.0	109.4	118.3	102.3
May	109.0	116.9	123.5	94.2	83.9	100.5	103.0	98.2	115.8	100.0	109.4	118.3	102.3
June	111.2	122.4	123.6	94.2	83.9	100.5	103.0	100.1	115.8	100.0	109.4	128.3	102.3
July (P)	114.4	123.9	123.9	90.4	83.9	100.6	103.0	107.9	133.7	100.0	109.4	128.5	102.3
<u>Percentage Change (P)</u>													
Jul 2022 over Jun 2022	2.9%	1.2%	0.3%	-4.0%	0.0%	0.1%	0.0%	7.8%	15.5%	0.0%	0.0%	0.2%	0.0%
Jul 2022 over Jul 2021	7.4%	19.0%	1.3%	-4.0%	-13.8%	0.2%	0.0%	7.9%	28.4%	0.0%	0.0%	15.8%	0.0%

Source : Samoa Bureau Statistics

(P) : Provisional figures

■ Revised figure

Table 7. LOCAL ITEMS UNDERLYING INDEX

(Base Period : Average Prices February 2016 = 100)

Group	All Items	Food and Non Alcoholic Beverages	Alcoholic Beverages, Tobacco and Narcotics	Clothing and Footwear	Housing, Water, Electricity, Gas and other Fuels	Furnishings, Household Equipment and Maintenance	Health	Transport	Communication	Recreation and Culture	Education	Restaurants	Miscellaneous goods and services
Weights	185.5	76.1	n.a	6.0	n.a	3.9	1.0	3.4	51.5	n.a	12.3	22.4	8.8
Ave - 2019	103.6	101.6		93.8		100.3	105.2	108.6	104.2		118.5	103.3	102.3
Ave - 2020	104.6	101.9		94.2		100.3	106.3	108.6	104.2		120.6	109.4	102.3
Ave - 2021	105.1	102.1		93.8		100.3	106.3	108.6	107.1		112.7	111.2	102.3
2021													
July	104.0	101.3		94.2		100.3	106.3	108.6	104.2		111.9	111.0	102.3
August	104.0	101.4		94.2		100.3	106.3	108.6	104.2		111.9	111.4	102.3
September	104.1	101.6		94.2		100.3	106.3	108.6	104.2		111.9	111.4	102.3
October	107.5	101.9		94.2		100.3	106.3	108.6	115.9		111.9	111.4	102.3
November	107.7	102.3		94.2		100.3	106.3	108.6	115.9		111.9	111.7	102.3
December	107.8	102.5		94.2		100.3	106.3	108.6	115.9		111.9	111.7	102.3
2022													
January	108.9	103.0		94.2		100.3	106.3	114.4	115.8		111.9	118.3	102.3
February	108.7	102.6		94.2		100.5	106.3	114.4	115.8		111.9	118.3	102.3
March	108.7	102.6		94.2		100.5	106.3	114.4	115.8		111.9	118.3	102.3
April	108.7	102.6		94.2		100.5	106.3	114.4	115.8		111.9	118.3	102.3
May	109.0	103.5		94.2		100.5	106.3	114.4	115.8		111.9	118.3	102.3
June	112.7	109.5		94.2		100.5	106.3	114.4	115.8		111.9	128.3	102.3
July (P)	117.8	109.9		90.4		100.6	106.3	114.4	133.7		111.9	128.5	102.3
<u>Percentage Change (P)</u>													
Jul 2022 over Jun 2022	4.5%	0.4%		-4.0%		0.1%	0.0%	0.0%	15.5%		0.0%	0.2%	0.0%
Jul 2022 over Jul 2021	13.3%	8.5%		-4.0%		0.2%	0.0%	5.3%	28.4%		0.0%	15.8%	0.0%

Source : Samoa Bureau Statistics

(P) : Provisional figure

Note : n.a. Not applicabl

Table 8. CONSUMER PRICE INDEX (AVERAGE ANNUAL INFLATION RATE).
(Base Period : Average Prices February 2016 = 100)

Group	All Items	Food and Non Alcoholic Beverages	Alcoholic Beverages, Tobacco and Narcotics	Clothing and Footwear	Housing, Water, Electricity, Gas and other Fuels	Furnishings, Household Equipment, and Maintenance	Health	Transport	Communication	Recreation and Culture	Education	Restaurants	Miscellaneous goods and services
<i>Weights</i>	1000.0	403.7	128.4	21.2	119.6	30.8	4.6	148.5	51.5	6.1	19.7	22.4	43.5
2019	1.0	1.0	4.1	-1.6	4.4	-1.6	3.1	-3.2	0.9	-4.2	2.8	4.4	0.0
2020	-1.6	-1.5	2.7	-0.3	-5.7	1.8	-0.9	-6.1	0.0	-0.3	1.2	5.9	1.0
2021	3.1	3.4	1.3	5.8	3.1	0.9	6.5	7.0	2.8	-0.3	-4.3	1.7	-1.6
2021													
July	-2.4	-4.3	2.2	1.2	-4.9	1.1	2.6	-2.8	0.0	-0.4	-2.4	4.0	-0.4
August	-1.7	-3.8	2.0	2.1	-2.6	1.0	3.6	-1.1	0.0	-0.5	-2.8	3.8	-0.7
September	-0.8	-2.7	1.8	2.9	-0.9	1.1	4.6	0.8	0.0	-0.7	-3.1	3.1	-1.0
October	0.5	-0.8	1.6	3.8	1.1	1.0	5.7	2.6	0.9	-0.7	-3.5	2.5	-1.2
November	1.8	1.2	1.4	4.7	2.1	1.0	6.4	4.7	1.9	-0.5	-3.9	1.9	-1.4
December	3.1	3.4	1.3	5.8	3.1	0.9	6.5	7.0	2.8	-0.3	-4.3	1.7	-1.6
2022													
January	4.5	5.3	1.2	6.9	5.3	0.7	6.5	9.2	3.7	0.1	-4.7	2.0	-1.9
February	5.7	7.0	1.1	8.4	6.6	1.0	6.5	11.0	4.7	0.4	-4.3	2.4	-1.9
March	6.7	8.5	1.0	10.0	7.8	1.2	5.8	12.5	5.6	1.1	-4.0	2.7	-1.7
April	7.6	10.0	0.9	11.5	7.8	1.3	5.1	13.8	6.5	1.6	-3.6	3.0	-1.4
May	8.2	11.0	0.8	13.1	7.9	1.7	3.8	14.1	7.4	1.9	-3.2	3.4	-0.9
June	8.8	12.2	0.6	14.5	6.3	2.4	2.4	14.6	8.4	2.0	-2.8	4.5	-0.1
July	9.5	13.6	0.7	13.6	4.7	3.1	1.7	15.3	10.7	2.1	-2.4	5.6	0.7

Source : Samoa Bureau Statistics

(P) : Provisional figures

Table 9 Consumer Price Index (Percentage change and Average Annual Inflation)

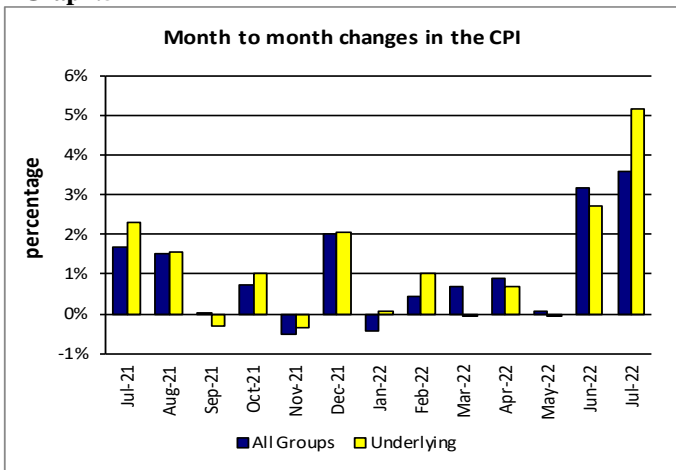
(Base Period: Average Prices February 2016 = 100)

Period	CPI ALL ITEMS	Percentage change over previous month	Last 12 months over previous 12 months	UNDERLYING ALL ITEMS	Percentage change over previous month	Last 12 months over previous 12 months	LOCAL COMPONENT	Percentage change over previous month	Last 12 months over previous 12 months	IMPORTED COMPONENT	Percentage change over previous month	Last 12 months over previous 12 months
2019	108.3	-	1.0	107.2	-	0.5	105.5	-	2.8	111.1	-	-0.7
2020	106.6	-	-1.6	106.6	-	-0.5	105.3	-	-0.2	107.9	-	-2.9
2021	109.9	-	3.1	110.1	-	3.2	105.9	-	0.6	114.0	-	5.7
2021												
July	111.0	1.7	-2.4	110.9	2.3	-1.9	106.5	0.4	-1.4	115.7	2.9	-3.3
August	112.7	1.5	-1.7	112.6	1.6	-1.5	107.3	0.8	-1.1	118.3	2.2	-2.3
September	112.8	0.0	-0.8	112.3	-0.3	-0.8	107.3	0.0	-0.8	118.4	0.1	-0.8
October	113.6	0.7	0.5	113.5	1.0	0.6	109.1	1.7	-0.4	118.2	-0.1	1.3
November	113.0	-0.5	1.8	113.1	-0.4	1.9	108.1	-0.9	0.2	118.1	-0.1	3.4
December	115.3	2.0	3.1	115.4	2.0	3.2	108.2	0.0	0.6	122.7	3.9	5.7
2022												
January	114.8	-0.4	4.5	115.4	0.1	4.2	108.3	0.1	1.4	121.6	-0.9	7.6
February	115.3	0.4	5.7	116.6	1.0	5.3	108.4	0.2	2.0	122.4	0.7	9.3
March	116.2	0.7	6.7	116.6	0.0	6.2	108.9	0.4	2.7	123.6	1.0	10.8
April	117.2	0.9	7.6	117.4	0.7	7.0	108.6	-0.3	3.1	126.0	2.0	12.1
May	117.3	0.1	8.2	117.3	-0.1	7.6	109.0	0.4	3.6	125.8	-0.2	12.7
June	121.0	3.2	8.8	120.5	2.7	8.4	111.2	2.0	3.9	131.1	4.2	13.6
July (P)	125.3	3.6	9.5	126.7	5.2	9.4	114.4	2.9	4.4	136.6	4.2	14.5

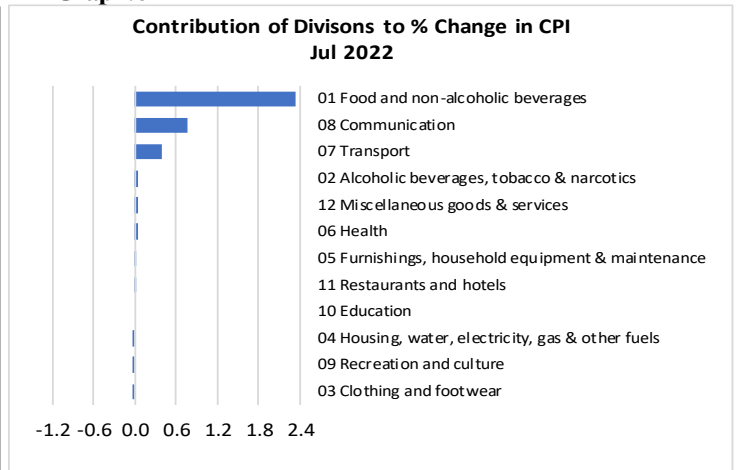
Source : Samoa Bureau Statistics

(P) : Provisional figures

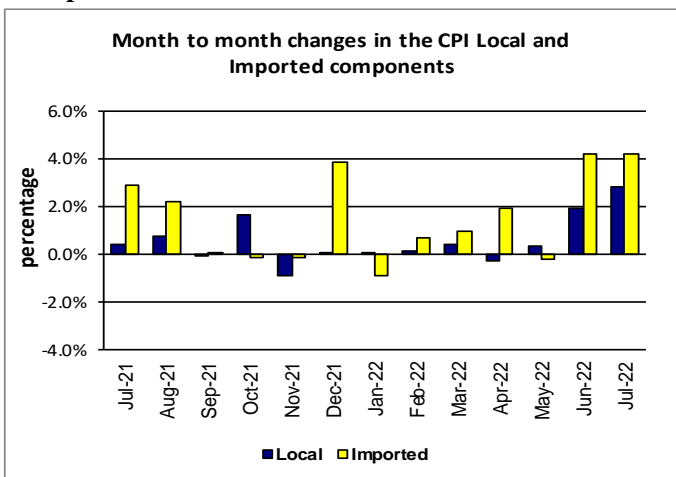
Graph.5



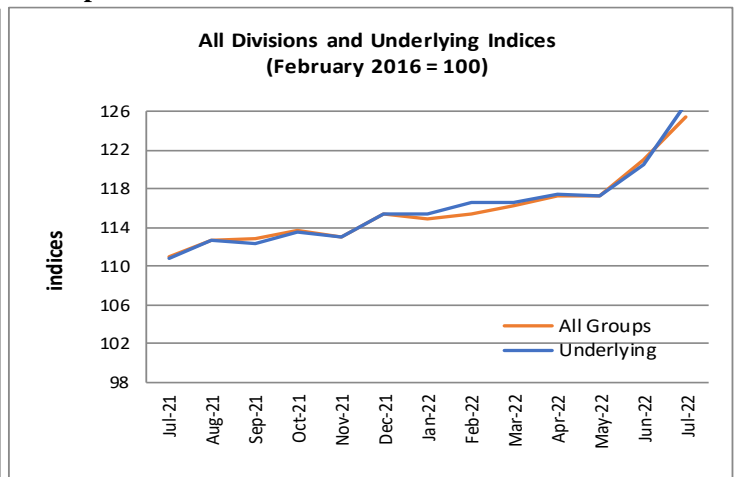
Graph.6



Graph.7



Graph.8



Graph.9

