

Please address all correspondence  
To Government Statistician  
In reply, please quote the file reference



File Ref: CPI 8/2022

GOVERNMENT OF SAMOA

## SAMOA BUREAU OF STATISTICS

# CONSUMER PRICE INDEX AUGUST 2022

### Key findings:

The Consumer Price Index for August 2022 increased by 15.2 percent compared to the same month last year.

- The Transport index increased by 31.3 percent.
- The Communication index increased by 28.4 percent.
- The Food & Non Alcoholic Beverages index also increased by 19.3 percent.

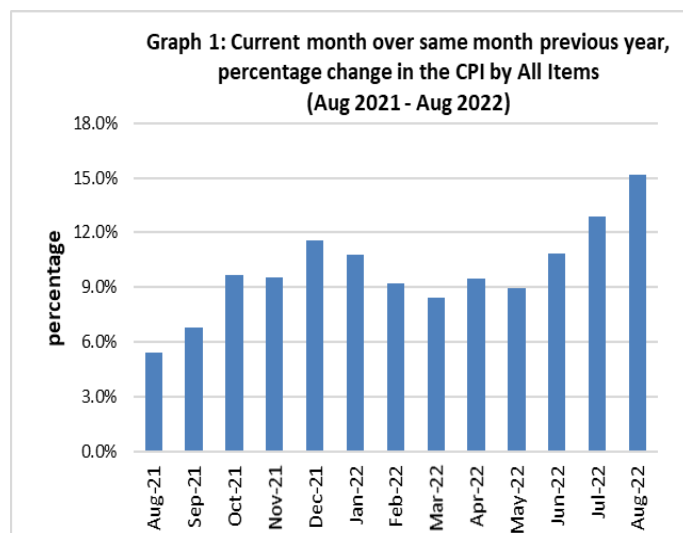
The Average Annual Inflation for the year ended August 2022 was 10.3 percent.

The CPI rose 3.6 percent from July 2022.

### SUMMARY

The Consumer Price Index for August 2022 rose 15.2 percent compared to August 2021. It also went up 3.6 percent in comparison to July 2022. This was mainly influenced by the increase in the Imported goods component by 21.4 percent from the same month last year, due to higher prices for fuel, imported food, building material, toiletries, medicine and mosquito repellent products.

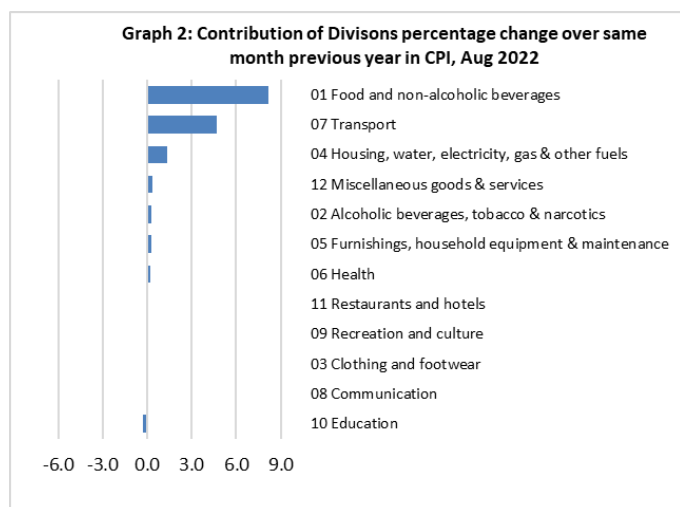
The Local goods component also contributed to the increase when it went up by 8.5 percent on a year-on-year (y-o-y) basis as a result of higher prices for local food and meals, airline fares, phone calls and internet. Graph 1 shows the percentage changes over the same month last year in the Consumer Price Index by all Divisions from August 2021 to August 2022.



Source : Samoa Bureau of Statistics

## Total All Divisions Contribution

As depicted in Graph 2, Food & Non Alcoholic Beverages was the largest contributor to the 15.2 percent rise in the CPI in August 2022, with a contribution of 8.2 percentage-points (pp) to the overall increase in August 2022. The most significant drivers of this within the group were taamu and cooking oil which more than doubled their prices in August 2021. Other products which contributed to the increase were taro (up 75.7%), banana (up 66.5%), fresh fish (up 30.8%), turkey wing (up 36.8%), round pancake (up 33.3%) and chicken leg quarter (up 26.0%). The next largest contributor was Transport with a contribution of 4.7 percentage-points, increasing 31.3% compared to August 2021. The greatest drivers of this increase were diesel (up 77.1%), airline fares (up 57.9%) and petrol (up 53.7%). Communication also contributed 1.4 percentage-points due to the increase in internet and mobile phone calling per minute.

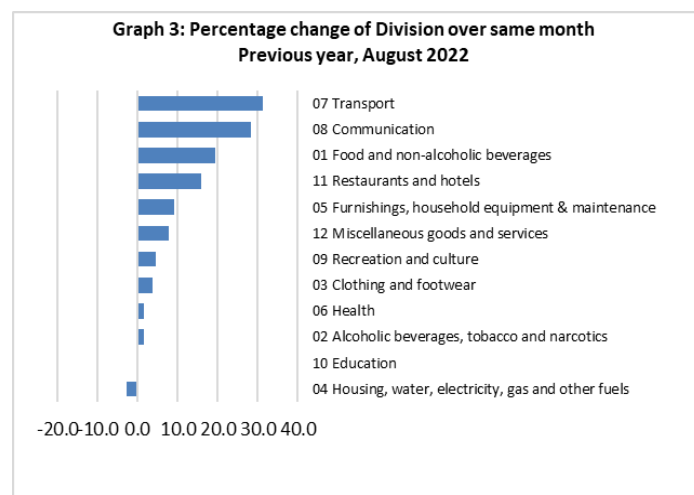


Source : Samoa Bureau of Statistics

## Consumer Price Index (% Change)

Graph 3 shows the percentage change for all Divisions (groups) in August 2022 in comparison to August 2021. Transport had the largest increase of 31.3 percent followed by Communication which rose 28.4 percent. Other groups such as Food & Non Alcoholic Beverages, Restaurants, Furnishing & Household Equipment & Maintenance, Miscellaneous Goods & Services, Recreation & Culture and Clothing & Footwear recorded increases of 19.3, 16.0, 9.2, 7.8, 4.6 and 3.8 percent respectively. Alcoholic Beverages & Tobacco and Health indices registered increases of 1.7 percent each.

On the other hand, Housing, Water, Electricity Gas & Other Fuel fell by 2.8 percent. No changes were recorded for the Education index.



Source : Samoa Bureau of Statistics

## Imported Goods Component

The Imported goods component of the Consumer Price Index registered an increase of 21.4 percent when compared to the same month last year. This increase was mainly due to higher prices recorded for fuel (petrol, diesel and kerosene), cooking oil, turkey wings, cup noodle, corned beef, rice, chicken leg quarter, vermicelli, cement, timber, cooking gas, washing soap, mosquito coil and medicine (amoxicillin).

## Local Goods Component

Increased prices recorded for airline fares, mobile phone calling per minute, internet, taamu, taro, banana, fresh fish, round pancake, mineral water, coconut and meals have resulted in the 8.5 percent increase in the local goods component.

## Transport Index

The increases in petrol of 53.7%, diesel of 77.1%, airline fares (Apia-Pago-Apia) of 71.1% and Apia-Auckland-Apia fares of 44.6% are reflected in the 31.2 percent increase in the Transport index.

## Communication Index

The Communication index recorded an increase of 28.4 percent due to the rise in prices for internet data bundle (46.7%) and mobile phone calling per minute (24.1%).

### Food and Non-Alcoholic Beverages Index

The increase of 19.3 percent in the Food & Non-Alcoholic Beverages index was influenced by higher prices recorded for chicken leg quarter (26.0%), taro (75.7%), rice (26.3%), fresh fish (piece 19.4%, string 43.9% and large 29.1%), round pancake (33.3%), turkey wing (36.8%), corned beef (27.8%), banana (66.5%), bowl noodle (28.2%) and mineral water (26.3%). Both taamu and cooking oil prices have doubled their prices in August 2021.

### Restaurants Index

The increase in prices recorded for takeaway meal led to 16.0 percent increase in the Restaurants index.

### Furnishings, Household Equipment & Maintenance Index

The Furnishings, Household Equipment & Maintenance index rose 9.2 percent due to the increase in prices for washing powder, washing soap, mosquito coil, futon mattress, glass buffet sideboard (sefe) and clothing chest.

### Miscellaneous Goods and Services Index

The 7.8 percent increase in the Miscellaneous Goods & Services index was a result of higher prices recorded for toilet paper, hair gel, toilet soap, diapers and toothpaste.

### Recreation and Culture Index

Higher prices for television (LCD) and exercise book led to the 4.6 percent increase in the Recreation and Culture index.

### Clothing and Footwear Index

The increase in Clothing and Footwear price (up 3.8 percent) was mainly due to the increase in prices for School uniform, ie solosolo, cargo short, aloha shirt and ie faitaga.

### Alcoholic Beverages and Tobacco Index

The Alcoholic Beverages and Tobacco index went up 1.7 percent due to the increase in prices for beer and Samoan kava.

### Health Index

An increase of 1.7 percent in the Health index was a reflection of higher prices recorded for medicine (amoxicillin tablet).

### Housing, Water, Electricity, Gas and other Fuels Index

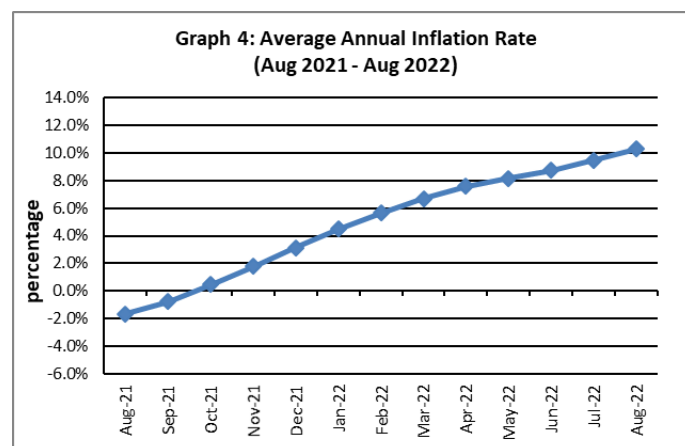
Lower prices recorded for electricity cash-power (16.7%) and treated water (19.8%) led to the 2.8 percent decrease in the Housing, Water, Electricity, Gas and other Fuels index.

### Underlying Indices <sup>1/</sup>

The All Items Underlying Index for August 2022 registered an increase of 15.1 percent when compared to August 2021. It also increased by 2.3 percent when compared to July 2022. Both the Imported and Local Items Underlying Indices recorded increases of 15.8 percent and 13.3 percent respectively.

### Inflation Rate

The average annual inflation rate for the year ended August 2022 was 10.3 percent. For the twelve months ending August 2021, the inflation rate was negative 1.7 percent. Presented in Graph 4 is the Average annual inflation rate (Aug 2021 - Aug 2022).



Source : Samoa Bureau of Statistics

The attached Tables and Graphs provide the users with more detailed analysis.

## **Technical Notes:**

The Consumer Price (CPI) measures the rate of inflation for Samoa. It is designed to measure the change in prices for the goods purchased by households in Samoa. The CPI measures the change in prices by comparing the prices for a basket of goods and services at the collection period with the price for the same goods in a base period.

The basket of goods that is priced is based on the average expenditures of households as recorded in the Household Income and Expenditure Survey (HIES). The HIES survey identifies how much households spend on different items. The more households spend on an item on average, the more important it is to the price index, and the higher the weight in the index.

<sup>1/</sup> Monthly movements in the 'headline' CPI series can be volatile. This volatility reflects price changes in particular items that may be due, among other factors, to fluctuations in commodity markets and agricultural conditions, policy changes, or seasonal or infrequent price resetting.

Underlying inflation is a measure of inflation that excludes certain items that face volatile price movements. Underlying inflation eliminates products that can have temporary price shocks because these shocks can diverge from the overall trend of inflation and give a false measure of inflation.



Date of release: 22<sup>nd</sup> September 2022

The next Consumer Price Index will be released on 20<sup>th</sup> October 2022.

Leota Aliielua Salani  
**GOVERNMENT STATISTICIAN/(CEO)**

**Table 1. CONSUMER PRICE INDEX.**

**(Base Period : Average Prices February 2016 = 100)**

Group	All Items	Food and Non Alcoholic Beverages	Alcoholic Beverages, Tobacco and Narcotics	Clothing and Footwear	Housing, Water , Electricity, Gas and other Fuels	Furnishings, Household Equipment, and Maintenance	Health	Transport	Communication	Recreation and Culture	Education	Restaurants	Miscellaneous goods and services
<i>Weights</i>	<b>1000.0</b>	<b>403.7</b>	<b>128.4</b>	<b>21.2</b>	<b>119.6</b>	<b>30.8</b>	<b>4.6</b>	<b>148.5</b>	<b>51.5</b>	<b>6.1</b>	<b>19.7</b>	<b>22.4</b>	<b>43.5</b>
Ave - 2019	108.3	112.1	116.8	93.8	95.0	96.4	100.0	111.3	104.2	88.7	113.5	103.3	97.8
Ave - 2020	106.6	110.4	120.0	93.5	89.6	98.1	99.2	104.4	104.2	88.5	114.9	109.4	98.8
Ave - 2021	109.9	114.1	121.6	98.9	92.4	98.9	105.7	111.7	107.1	88.2	109.9	111.2	97.2
2021													
August	112.7	118.5	121.4	104.8	98.8	98.9	107.0	114.1	104.2	88.3	109.4	111.4	97.1
September	112.8	117.9	121.6	104.5	98.9	99.2	107.0	115.9	104.2	88.3	109.4	111.4	96.9
October	113.6	118.1	121.6	104.9	101.0	98.9	107.0	115.1	115.9	89.0	109.4	111.4	96.9
November	113.0	120.1	121.6	105.1	88.9	98.7	107.0	115.5	115.9	89.0	109.4	111.7	96.9
December	115.3	123.1	121.7	105.1	90.5	99.7	107.0	121.3	115.9	89.0	109.4	111.7	97.1
2022													
January	114.8	122.3	121.7	106.4	90.2	100.7	107.0	119.0	115.8	89.0	109.4	118.3	97.2
February	115.3	123.8	122.1	108.6	90.3	102.0	109.9	117.0	115.8	89.0	109.4	118.3	97.6
March	116.2	124.0	122.6	108.9	90.6	103.2	101.5	120.8	115.8	91.8	109.4	118.3	99.1
April	117.2	124.5	122.4	108.8	92.3	102.5	99.9	125.2	115.8	91.8	109.4	118.3	99.8
May	117.3	124.5	122.6	109.4	92.4	102.5	95.1	125.4	115.8	91.8	109.4	118.3	101.4
June	121.0	129.0	122.6	109.3	93.6	106.3	95.1	134.8	115.8	91.8	109.4	128.3	101.2
July	125.3	135.9	123.0	108.4	93.6	106.8	104.1	137.9	133.7	90.6	109.4	128.5	102.5
August (P)	129.9	141.4	123.4	108.7	96.0	108.1	108.8	149.9	133.7	92.3	109.4	129.2	104.7
<b><u>Percentage Change (P)</u></b>													
Aug 2022													
over	15.2%	19.3%	1.7%	3.8%	-2.8%	9.2%	1.7%	31.3%	28.4%	4.6%	0.0%	16.0%	7.8%
Aug 2021													
Aug 2022													
over	3.6%	4.0%	0.3%	0.3%	2.6%	1.2%	4.6%	8.7%	0.0%	1.9%	0.0%	0.5%	2.2%
Jul 2022													

Source : Samoa Bureau Statistics

(P) : Provisional figures

 Revised figure

**Table 2. ALL ITEMS UNDERLYING INDEX**

(Base Period : Average Prices February 2016 = 100)

Group	All Items	Food and Non Alcoholic Beverages	Alcoholic Beverages, Tobacco and Narcotics	Clothing and Footwear	Housing, Water, Electricity, Gas and other Fuels	Furnishings, Household Equipment, and Maintenance	Health	Transport	Communication	Recreation and Culture	Education	Restaurants	Miscellaneous goods and services
<i>Weights</i>	<b>586.7</b>	<b>345.3</b>	<i>n.a</i>	<b>21.2</b>	<b>24.2</b>	<b>30.8</b>	<b>3.5</b>	<b>26.4</b>	<b>51.5</b>	<b>5.6</b>	<b>12.3</b>	<b>22.4</b>	<b>43.5</b>
<i>Ave - 2019</i>	107.2	111.6		93.8	94.6	96.4	100.1	108.1	104.2	87.9	118.5	103.3	97.8
<i>Ave - 2020</i>	106.6	109.9		93.5	93.7	98.1	98.9	110.1	104.2	87.6	120.6	109.4	98.8
<i>Ave - 2021</i>	110.1	114.8		98.9	94.5	98.9	107.5	113.6	107.1	87.3	112.7	111.2	97.2
<i>2021</i>													
<i>August</i>	112.6	119.4		104.8	93.7	98.9	109.3	113.5	104.2	87.4	111.9	111.4	97.1
<i>September</i>	112.3	118.8		104.5	94.0	99.2	109.3	113.5	104.2	87.4	111.9	111.4	96.9
<i>October</i>	113.5	118.8		104.9	97.5	98.9	109.3	113.8	115.9	88.1	111.9	111.4	96.9
<i>November</i>	113.1	117.9		105.1	99.2	98.7	109.3	113.8	115.9	88.1	111.9	111.7	96.9
<i>December</i>	115.4	121.4		105.1	104.7	99.7	109.3	113.8	115.9	88.1	111.9	111.7	97.1
<i>2022</i>													
<i>January</i>	115.4	120.9		106.4	104.5	100.7	109.3	114.4	115.8	88.1	111.9	118.3	97.2
<i>February</i>	116.6	122.4		108.6	105.4	102.0	113.2	114.5	115.8	88.1	111.9	118.3	97.6
<i>March</i>	116.6	122.1		108.9	105.1	103.2	102.0	114.5	115.8	91.2	111.9	118.3	99.1
<i>April</i>	117.4	123.1		108.8	111.5	102.5	99.9	114.5	115.8	91.2	111.9	118.3	99.8
<i>May</i>	117.3	122.8		109.4	111.8	102.5	93.5	114.5	115.8	91.2	111.9	118.3	101.4
<i>June</i>	120.5	127.2		109.3	111.5	106.3	93.5	114.5	115.8	91.2	111.9	128.3	101.2
<i>July</i>	126.7	134.9		108.4	111.2	106.8	105.4	114.5	133.7	89.9	111.9	128.5	102.5
<i>August (P)</i>	129.6	139.1		108.7	111.9	108.1	111.7	115.8	133.7	91.7	111.9	129.2	104.7
<b><u>Percentage Change (P)</u></b>													
<i>Aug 2022 over Aug 2021</i>	15.1%	16.5%		3.8%	19.4%	9.2%	2.2%	2.1%	28.4%	5.0%	0.0%	16.0%	7.8%
<i>Aug 2022 over Jul 2022</i>	2.3%	3.1%		0.3%	0.6%	1.2%	6.0%	1.1%	0.0%	2.1%	0.0%	0.5%	2.2%

Source : Samoa Bureau Statistics

(P) : Provisional figures

Note : n.a. Not applicable

**Table 3. AVERAGE RETAIL PRICES OF SELECTED COMMODITIES**

Commodities	Wt	Unit	2021			2022			Aug-22	
			Jun	Jul	Aug	Jun	Jul	Aug	% chng from prev mnth	%chng from Aug 21
			<b>01 Food and non-alcoholic beverages</b>							
Leg Quarters Chicken	62.2	kg	4.49	4.93	5.24	5.27	6.17	6.61	7.1%	26.0%
Raw Sugar	21.3	kg	2.78	2.80	2.82	2.85	3.12	3.18	1.8%	12.6%
Bread	17.2	loaf	1.64	1.64	1.64	1.75	1.78	1.78	-0.4%	8.5%
Corned Beef (a)	15.9	340 grms	8.55	8.55	8.45	9.02	9.02	9.02	0.0%	6.7%
Taro	15.2	kg	1.88	2.00	2.59	3.98	4.14	4.55	9.8%	75.7%
Re-packed medium grain rice	13.4	kg	2.73	2.63	2.64	3.14	3.15	3.33	5.8%	26.3%
Prepacked medium grain rice (a)	13.4	907 grms	2.77	2.77	2.77	2.88	2.88	2.88	0.0%	4.2%
Canned fish betw een \$3.00 and \$3.99 Natural Oil	12.7	425 grms	3.25	3.22	3.25	3.22	3.25	3.24	-0.2%	-0.4%
Bongo	10.2	20 grms	0.81	0.80	0.83	0.84	0.85	0.88	3.5%	6.0%
Keke Saina Biscuits (a)	9.2	pkt 10	6.17	6.13	6.13	6.29	6.29	6.46	2.6%	5.4%
Ice Cream (a)	9.2	2 ltr	15.52	15.52	15.43	17.02	17.08	17.27	1.1%	11.9%
Ramen	9.0	85 grms	1.06	1.11	1.11	1.11	1.16	1.23	6.7%	11.0%
Fish (Piece)	7.9	kg	24.18	24.64	24.09	24.78	24.75	28.78	16.3%	19.4%
Butter	7.7	454 grms	16.06	16.06	16.14	18.31	18.47	18.47	0.0%	14.4%
Round Pancake (a)	7.5	sml	0.15	0.15	0.15	0.20	0.20	0.20	0.0%	33.3%
Mutton Flaps	6.6	kg	22.54	22.90	24.13	25.32	25.22	25.80	2.3%	6.9%
Canned fish \$4:00 or over N/Oil	6.4	425 grms	4.73	4.89	4.83	4.67	4.74	4.76	0.4%	-1.4%
Canned fish under \$3.00 in N/Oil	6.4	425 grms	2.48	2.68	2.67	3.12	2.85	2.85	0.0%	6.9%
Wings Turkey	6.3	kg	8.83	8.63	9.36	12.64	12.46	12.81	2.8%	36.8%
Fish (string)	6.0	kg	10.18	11.11	10.12	11.25	11.55	14.56	26.1%	43.9%
Fish (large)	6.0	kg	15.86	15.67	19.69	18.94	20.18	25.41	25.9%	29.1%
Cooking vegetable oil (a)	5.9	ltr	4.59	5.03	5.15	7.61	10.75	10.70	-0.5%	107.8%
Sausage beef	5.8	kg	14.15	14.40	14.32	15.12	15.03	15.16	0.8%	5.9%
Chinese Cabbage	5.5	kg	5.73	5.70	4.51	6.07	6.01	5.17	-13.9%	14.7%
Eggs medium size	5.4	doz	7.18	7.18	7.22	7.24	7.13	6.91	-3.1%	-4.3%
Plain w hite flour	5.3	kg	2.36	2.33	2.33	2.72	2.88	2.85	-1.3%	21.9%
Onions	5.2	kg	3.27	3.51	3.23	4.06	3.95	3.99	1.0%	23.6%
Milk	5.1	ltr	3.75	3.75	3.75	4.28	4.33	4.33	0.0%	15.5%
Soft Drink Coke	5.1	750 mls	3.00	3.00	3.00	3.05	3.10	3.08	-0.6%	2.7%
Soft Drink Taxi	5.1	330 mls	1.83	1.82	1.82	1.87	1.90	1.73	-8.8%	-4.6%
Milk	4.8	ltr	3.76	3.81	3.85	4.24	4.27	4.25	-0.5%	10.4%
Salted Beef	4.7	kg	19.98	19.85	19.95	22.18	22.15	22.10	-0.2%	10.8%
Canned fish Soifua in Tomato Sauce	4.5	425 grms	2.53	2.53	2.53	2.45	2.44	2.46	1.0%	-2.5%
CCK Coffee	4.5	100 grms	3.94	3.94	3.94	3.94	3.94	3.94	0.0%	0.0%
Sky Flakes Biscuits	4.3	850 grms	16.56	16.63	16.74	17.87	18.64	18.64	0.0%	11.3%
Stew ing beef	4.2	kg	15.99	16.05	16.04	16.49	16.49	17.19	4.3%	7.2%
Koko Samoa	4.1	cup	17.22	16.16	17.47	16.76	18.70	15.70	-16.0%	-10.1%
Corned Beef Pacific	3.6	340 grms	15.60	15.60	15.67	15.86	16.85	17.35	2.9%	10.7%
Ramen kimchi (bow l)	3.4	86 grms	2.58	2.57	2.58	3.28	3.22	3.30	2.6%	28.2%
Soy Sauce Mushroom	3.3	750 grms	3.03	3.03	2.99	3.38	3.40	3.44	1.2%	15.0%
Pork Ptg Trotter	3.1	kg	7.80	7.26	7.46	9.30	8.19	8.76	7.0%	17.5%
Conned Beef Palm	3.0	340 grms	13.51	13.51	13.40	16.73	16.69	17.12	2.6%	27.8%
Ripe Banana (a)	2.7	kg	3.02	3.41	3.18	3.49	3.70	3.77	1.9%	18.5%
Tang pow der (a)	2.5	25 grms	0.65	0.65	0.65	0.66	0.65	0.65	0.0%	0.0%
Minties Pascall (a)	2.5	200 grms	12.90	12.90	12.90	12.50	12.50	12.50	0.0%	-3.1%



Potatoes	2.4	kg	3.69	3.87	3.80	4.75	4.58	4.55	-0.7%	19.8%
Green Banana	2.3	kg	1.01	1.11	0.96	1.45	1.47	1.60	9.3%	66.5%
Apple small	2.3	each	1.75	1.71	1.78	1.76	1.68	1.51	-10.2%	-15.3%
Mineral Water	2.3	bottle	1.40	1.46	1.48	1.54	1.54	1.87	20.9%	26.3%
Chocolate Cake (a)	2.1	sml	21.50	21.50	21.50	21.50	21.50	21.50	0.0%	0.0%
Cucumbers	2.1	kg	4.24	4.57	4.55	5.25	5.26	4.71	-10.4%	3.4%
Instant Nescafe Coffee	2.0	50 grms	6.78	6.78	6.82	7.14	7.14	7.12	-0.3%	4.4%
Mutton Neck	1.9	kg	22.20	22.15	22.64	25.56	22.89	24.85	8.6%	9.8%
Vermicelli Lungken	1.9	454 grms	3.38	3.48	3.46	4.25	4.29	4.34	1.1%	25.3%
Tomatoes	1.8	kg	13.95	14.35	16.01	16.60	15.67	14.51	-7.4%	-9.4%
Sausage Pork	1.7	kg	14.38	14.38	14.38	14.49	14.49	14.61	0.8%	1.5%
Bell Tea Bags	1.6	150 grms	11.11	11.11	11.11	11.38	11.36	11.18	-1.7%	0.6%
Samco Tw isties	1.4	20 grms	0.70	0.70	0.70	0.73	0.73	0.73	0.0%	4.1%
Matured husked Coconuts	1.3	kg	0.95	0.92	1.02	1.08	1.13	1.09	-2.8%	7.8%
Matured Un husked Coconuts (a)	1.3	kg	0.63	0.63	0.64	0.79	0.77	0.80	2.8%	24.3%
Taamu	1.1	kg	3.86	3.46	3.84	7.45	7.51	11.90	58.5%	210.0%
Round Cabbage Round	1.1	kg	7.62	7.06	6.54	10.84	8.84	7.13	-19.4%	9.1%

## 02 Alcoholic beverages, tobacco and narcotics

Lager Beer	37.9	355 mls	3.65	3.66	3.65	3.76	3.76	3.79	0.8%	4.0%
Pall Mall Filter Cigarettes (Red)	24.3	20 rolls	14.60	14.60	14.60	14.60	14.60	14.60	0.0%	0.0%
Pall Mall Menthol Cigarettes (Green)	24.3	20 rolls	14.60	14.60	14.60	14.60	14.60	14.60	0.0%	0.0%
Beer (a)	16.3	330 mls	3.50	3.53	3.51	3.60	3.68	3.69	0.3%	5.0%
Tobacco (a)	12.6	30 grms	15.00	15.00	15.00	15.00	15.00	15.00	0.0%	0.0%
Vodka Niu Spirit (a)	3.8	Niu / 2 ltr	66.82	66.82	66.82	66.82	66.82	66.82	0.0%	0.0%
Whisky Jim Bean Spirit (a)	3.8	1 ltr	92.75	92.75	92.75	88.50	91.75	91.75	0.0%	-1.1%
Paper Cigarettes	3.6	50 sheets	1.70	1.70	1.70	1.70	1.70	1.70	0.0%	0.0%
Samoa kava	1.8	pkt	42.07	39.11	38.67	40.00	39.44	43.70	10.8%	13.0%

## 03 Clothing and footwear

Uniform le Faitaga College boys	4.3	size 8-10	29.67	37.00	37.00	38.33	38.33	38.33	0.0%	3.6%
Uniform Pa'ave (a)	3.7	size 7	29.67	37.33	37.33	42.67	42.67	42.67	0.0%	14.3%
soft Jandals	2.5	10.5 size	9.25	9.25	9.25	9.25	9.25	9.25	0.0%	0.0%
mamanu palama Puletasi (a)	2.3	medium	150.00	150.00	150.00	150.00	125.00	125.00	0.0%	-16.7%
Solosolo cotton print	2.2	42 inch	12.02	11.87	11.77	12.58	12.58	12.58	0.0%	6.9%
Cargo shorts (a)	1.8	38 size	88.25	88.25	88.25	92.25	93.00	93.00	0.0%	5.4%
Shirt short sleeves men Aloha shirt (a)	1.1	men / XL	51.48	55.23	55.23	55.23	56.79	57.35	1.0%	3.8%
Shirt long sleeves men	1.1	16.5 size	37.24	37.23	37.24	37.13	37.13	37.75	1.7%	1.4%
Shoes Nike Running shoes (a)	0.8	size 9	258.50	258.50	258.50	258.50	258.50	258.50	0.0%	0.0%
Faitaga suiting le Faitaga	0.7	36/38 size	33.80	33.80	33.80	35.18	35.80	36.05	0.7%	6.7%
Woman Nylon Panties	0.6	medium	5.22	5.22	5.13	4.72	4.67	5.00	7.1%	-2.6%

## 04 Housing, water, electricity, gas and other fuels

Electricity Cashpower	50.6	kw h	0.67	0.67	0.69	0.58	0.58	0.58	0.0%	-16.7%
Reservoir treated Water	28.5	15-40 m3	1.67	1.67	1.67	1.34	1.34	1.34	0.0%	-19.8%
Liquid gas	15.8	9kg	59.25	59.25	59.25	72.05	71.80	71.80	0.0%	21.2%
Government house Rent	12.2	2 b/room	650.00	650.00	650.00	650.00	650.00	680.00	4.6%	4.6%
Kerosene	4.1	1 ltr	2.10	2.20	2.28	3.53	3.53	4.36	23.8%	91.4%
High gloss Paint High gloss	3.5	4 ltrs	75.58	74.92	75.58	82.75	82.75	82.75	0.0%	9.5%
Plus 2 plastic Paint	3.5	4 ltrs	43.60	44.40	45.40	48.20	46.60	46.60	0.0%	2.6%
NZ or Australia Cement	0.8	40 kg	22.76	23.36	23.71	38.94	41.50	45.24	9.0%	90.8%
Dressed per Timber 2x4	0.7	meter	8.27	8.50	9.22	10.92	10.84	11.30	4.3%	22.6%



## 05 Furnishings, household equipment and routine household maintenance

Washing powder (a)	6.3	200 grms	1.87	1.87	1.87	2.06	1.98	1.99	0.6%	6.5%
Soap yellow Washing soap	5.9	bar	2.72	2.79	2.79	3.24	3.43	3.47	1.3%	24.4%
Mosquito coil	4.4	10 coil	1.33	1.30	1.30	1.45	1.48	1.55	5.1%	19.2%
Mattress single Futon Mattress (a)	3.8	4 inch	157.33	155.67	155.67	163.17	163.17	163.17	0.0%	4.8%
Live Babysitting (a)	3.8	1 week	142.50	142.50	142.50	142.50	142.50	142.50	0.0%	0.0%
Common brand ltr Refridgerator	2.5	331-335 ltr	2189.52	2189.52	2311.32	2382.72	2342.52	2342.52	0.0%	1.3%
Gold Power washing powder	1.7	180 grms	1.67	1.67	1.67	1.67	1.67	1.67	0.0%	0.0%
Eveready AA size Batteries	1.2	AA 1/4 size	3.84	3.84	3.84	3.84	3.84	3.99	3.7%	3.7%
Knife tramontina Bush knife	0.9	24 inch	28.36	28.36	28.61	29.86	29.61	29.61	0.0%	3.5%
Stove Kerosene stove	0.2	2 burner	132.50	132.50	112.50	113.75	112.50	112.50	0.0%	0.0%
Glass basic no design Tumblers (a)	0.1	medium	14.26	17.46	17.46	17.46	17.46	17.46	0.0%	0.0%
Seife 3 shelves	0.1	48*48 inch	620.00	620.00	620.00	645.00	657.50	657.50	0.0%	6.0%
Chest flat top Clothing chest	0.0	medium	500.00	500.00	500.00	550.00	562.50	562.50	0.0%	12.5%

## 06 Health

Amoxicillin 500mg tablets (a)	2.5	20 tablets	8.00	8.00	8.50	7.10	8.70	9.07	4.2%	6.7%
Hospital Charge	1.1	per night	22.50	22.50	22.50	22.50	22.50	22.50	0.0%	0.0%
Private Doctor Consultation fee	1.0	per adult	30.00	30.00	30.00	30.00	30.00	30.00	0.0%	0.0%

## 07 Transport

Petrol	60.8	1 ltr	2.63	2.68	2.76	3.74	3.74	4.24	13.5%	53.7%
Taxi Fare P.O to Motootua Hosp	8.2	per trip	4.80	4.80	4.80	4.80	4.80	4.80	0.0%	0.0%
Taxi Fares P.O to Malua	8.2	per trip	31.30	31.30	31.30	31.30	31.30	31.30	0.0%	0.0%
Taxi Fares P.O to Falefa	8.2	per trip	43.20	43.20	43.20	43.20	43.20	43.20	0.0%	0.0%
Air Fares Faleolo-Pago-Faleolo	6.8	return trip	395.00	395.00	395.00	395.00	676.00	676.00	0.0%	71.1%
Air Fares Apia Auckland Apia	6.8	1 month	1257.87	1257.87	1257.87	1459.44	1417.11	1819.47	28.4%	44.6%
Car Registration (private car)	5.7	1501-2000	320.00	320.00	320.00	256.00	256.00	256.00	0.0%	-20.0%
Used Car Toyota Corolla (a)	5.1	1500 cc	23500.00	23500.00	23500.00	23500.00	23500.00	23500.00	0.0%	0.0%
Used Car Toyota Camry (a)	5.1	1500 cc	18000.00	18000.00	18000.00	18000.00	18000.00	18000.00	0.0%	0.0%
Diesel	4.8	1 ltr	2.48	2.56	2.65	3.98	3.98	4.69	17.9%	77.1%
Bus Fares Apia Motootua Hosp	3.5	one adult	1.30	1.30	1.30	1.30	1.30	1.30	0.0%	0.0%
Bus Fares Apia Malua	3.5	one adult	2.60	2.60	2.60	2.60	2.60	2.60	0.0%	0.0%
Bus Fares Apia Falefa	3.5	one adult	3.70	3.70	3.70	3.70	3.70	3.70	0.0%	0.0%
Charge car repair Labour charge	3.4	min charge	63.33	63.33	63.33	67.00	67.00	67.00	0.0%	5.8%
New Pickup Ford Ranger Double cab (a)	3.3	3200 cc	94000.00	94000.00	94000.00	94000.00	94000.00	94000.00	0.0%	0.0%
New Pickup Toyota Hilux Double cab (a)	3.3	3200 cc	105000.00	105000.00	105000.00	105000.00	105000.00	105000.00	0.0%	0.0%
Used Mini van Toyota Noah (a)	2.4	2000 cc	20066.67	19600.00	19600.00	19600.00	19600.00	21100.00	7.7%	7.7%
Used Mini van Toyota Voxy (a)	2.4	2000 cc	20066.67	19600.00	19600.00	19600.00	19600.00	21100.00	7.7%	7.7%
Tyre Car Tyre	1.5	195/70 R(1	187.50	191.25	191.25	203.75	203.75	182.50	-10.4%	-4.6%
Boat Fares Mulifanua Salelologa	1.1	one way	12.00	12.00	12.00	10.00	10.00	10.00	0.0%	-16.7%
Boat Fares Apia Pago Apia	1.1	min charge	120.00	120.00	120.00	120.00	120.00	120.00	0.0%	0.0%

## 08 Communication

Calling per minute Rate cell phone (a)	10.02	per minute	0.43	0.43	0.43	0.43	0.59	0.59	0.0%	37.2%
Internet data bundles per mb Rate (a)	10.02	per mb	0.25	0.25	0.25	0.25	0.33	0.33	0.0%	32.0%
Calling per minute Rate cell phone (a)	10.02	per minute	0.44	0.44	0.44	0.44	0.49	0.49	0.0%	11.4%
Internet data bundles per mb Rate (a)	10.02	per mb	0.20	0.20	0.20	0.32	0.33	0.33	0.0%	65.0%
Rental Telephone	3.87	1 month	24.15	24.15	24.15	24.15	24.15	24.15	0.0%	0.0%
Prepaid Internet	3.06	30 mins	5.80	5.80	5.80	5.80	5.80	5.80	0.0%	0.0%
NZ Telephone	1.50	3 mins	2.37	2.37	2.37	2.32	2.37	2.37	0.0%	0.0%
USA Telephone	1.50	3 mins	2.97	2.97	2.97	2.97	2.97	2.97	0.0%	0.0%
local Telephone	1.50	1 min	0.10	0.10	0.10	0.10	0.10	0.10	0.0%	0.0%

## 09 Recreation and culture

Television LCD 32" (a)	2.30 LCD 32"	886.17	869.50	852.83	852.83	852.83	869.50	2.0%	2.0%
Exercise Book w arwick	1.44 1B4	1.45	1.45	1.45	1.62	1.55	1.62	4.3%	11.5%
Laptop (a)	1.33 each	2898.60	2898.60	2898.60	2898.60	2898.60	2898.60	0.0%	0.0%
Graxomone Weedkiller	0.56 1 ltr	46.67	46.67	46.67	46.67	46.67	46.67	0.0%	0.0%
Admission Cinema Admission	0.41 ticket	15.00	15.00	15.00	15.00	15.00	15.00	0.0%	0.0%
Paper Samoa New s Paper	0.01 each	2.50	2.50	2.50	2.50	2.50	2.50	0.0%	0.0%
Paper New s Paper	0.01 each	2.50	2.50	2.50	2.50	2.50	2.50	0.0%	0.0%

## 10 Education

Fees PTA Primary Y6 Urban Registration fees (a)	7.23 Year 6	72.50	72.50	72.50	72.50	72.50	72.50	0.0%	0.0%
Fees PTA Secondary Y10 Urban Registration fees	5.11 Year 10	58.00	58.00	58.00	58.00	58.00	58.00	0.0%	0.0%
Fees Tertiary NUS registration School Fees	3.79 registration	322.00	322.00	322.00	322.00	322.00	322.00	0.0%	0.0%
Fees Secondary Y Examination Fees (a)	3.61 Y12-13	25.50	25.50	25.50	25.50	25.50	25.50	0.0%	0.0%

## 11 Restaurants and hotels

Fish & Chip Meal	7.79 1 serve	10.08	10.08	10.08	10.75	10.92	11.00	0.8%	9.1%
Curry & Chopsuey Meal	4.87 1 serve	4.00	4.00	4.00	5.33	5.00	5.00	0.0%	25.0%
Chicken & Chips Meal (a)	4.87 1 serve	10.29	10.29	10.43	11.21	11.36	11.43	0.6%	9.6%
Steam rice & chicken Meal (a)	4.87 1 serve	5.00	5.00	5.00	5.83	6.17	6.17	0.0%	23.3%

## 12 Miscellaneous goods and services

Paper Sofan deluxe ply Toilet Paper	8.52 250 sheets	0.93	0.98	1.00	1.13	1.14	1.19	4.4%	18.8%
Hair Gel	4.59 1124 ml	4.76	4.61	4.61	4.81	4.91	5.29	7.6%	14.6%
Price for Storage of remains (a)	4.41 per day	60.00	60.00	60.00	60.00	60.00	60.00	0.0%	0.0%
Basic Casket (a)	4.41 each	1966.67	1966.67	1966.67	1966.67	1966.67	1966.67	0.0%	0.0%
Standard Embalming (a)	4.41 1 person	1500.00	1500.00	1500.00	1500.00	1500.00	1500.00	0.0%	0.0%
Toilet soap (a)	4.38 90g	1.93	1.91	1.91	2.03	2.04	2.02	-0.9%	5.7%
Diapers (a)	4.19 5kg-10kg	7.89	7.74	7.60	7.46	8.01	8.01	0.0%	5.5%
soap Lux Toilet soap	3.87 85g	0.99	0.99	0.99	1.05	1.05	1.06	1.2%	7.6%
Paste Colgate regular flavour Tooth Paste	3.43 140g	4.30	4.30	4.30	4.39	4.42	4.52	2.3%	5.2%
Huggies kg & Diapers	1.30 16kg & ove	39.47	39.47	39.50	39.68	39.68	39.68	0.0%	0.5%

Source : Samoa Bureau Statistics

(a) : New commodity from February 2016

(P) : Provisional figures

Note : Please note unit of conversion was in pound's (lb's) but been converted into kilograms (kg)

**Table 4. IMPORTED GOODS COMPONENT OF THE CONSUMER PRICE INDEX**  
**(Base Period : Average Prices February 2016 = 100)**

Group	All Items	Food and Non Alcoholic Beverages	Alcoholic Beverages, Tobacco and Narcotics	Clothing and Footwear	Housing, Water , Electricity, Gas and other Fuels	Furnishings, Household Equipment and Maintenance	Health	Transport	Communication	Recreation and Culture	Education	Restaurants	Miscellaneous goods and services
<i>Weights</i>	<b>494.7</b>	<b>269.1</b>	<b>23.8</b>	<b>15.2</b>	<b>28.3</b>	<b>26.9</b>	<b>2.5</b>	<b>88.6</b>	<i>n.a</i>	<b>5.6</b>	<i>n.a</i>	<i>n.a</i>	<b>34.7</b>
<i>Ave - 2019</i>	111.1	114.5	118.3	93.7	100.8	95.8	97.9	117.3		87.9			96.7
<i>Ave - 2020</i>	107.9	112.2	117.1	93.2	96.0	97.7	95.8	107.4		87.6			98.0
<i>Ave - 2021</i>	114.0	118.4	118.8	100.9	99.1	98.7	108.0	119.9		87.3			95.9
2021													
August	118.3	124.4	119.2	108.9	99.4	98.7	110.6	123.7		87.4			95.8
September	118.4	123.7	119.2	108.6	99.9	99.1	110.6	126.6		87.4			95.6
October	118.2	123.5	119.2	109.2	102.7	98.7	110.6	125.4		88.1			95.5
November	118.1	122.4	119.2	109.4	105.0	98.5	110.6	127.2		88.1			95.6
December	122.7	126.7	119.2	109.4	112.0	99.6	110.6	137.1		88.1			95.7
2022													
January	121.6	125.9	119.2	111.2	110.8	100.8	110.6	133.0		88.1			95.9
February	122.4	128.0	119.7	114.3	110.9	102.2	116.1	129.7		88.1			96.4
March	123.6	127.7	119.7	114.7	112.4	103.6	100.1	136.0		91.2			98.3
April	126.0	128.9	119.7	114.5	119.5	102.8	97.2	143.5		91.2			99.2
May	125.8	128.2	118.5	115.4	119.8	102.8	88.1	143.8		91.2			101.2
June	131.1	132.3	118.4	115.3	125.1	107.1	88.1	158.2		91.2			101.0
July	136.6	141.9	119.1	115.4	124.9	107.7	105.0	158.2		89.9			102.5
August (P)	143.6	147.3	119.1	115.8	132.6	109.2	114.0	176.4		91.7			105.3
<b><u>Percentage Change (P)</u></b>													
Aug 2022													
over	21.4%	18.4%	-0.1%	6.3%	33.4%	10.5%	3.1%	42.6%		5.0%			9.9%
Aug 2021													
Aug 2022													
over	5.1%	3.8%	0.0%	0.3%	6.2%	1.3%	8.6%	11.5%		2.1%			2.7%
Jul 2022													

Source : Samoa Bureau Statistics

(P) : Provisional figures

Note : n.a. Not applicable

**Table 5. IMPORTED ITEMS UNDERLYING INDEX**

**(Base Period : Average Prices February 2016 = 100)**

Group	All Items	Food and Non Alcoholic Beverages	Alcoholic Beverages, Tobacco and Narcotics	Clothing and Footwear	Housing, Water , Electricity, Gas and other Fuels	Furnishings, Household Equipment and Maintenance	Health	Transport	Communication	Recreation and Culture	Education	Restaurants	Miscellaneous goods and services
<b>Weights</b>	<b>401.2</b>	<b>269.1</b>	<b>n.a</b>	<b>15.2</b>	<b>24.2</b>	<b>26.9</b>	<b>2.5</b>	<b>23.0</b>	<b>n.a</b>	<b>5.6</b>	<b>n.a</b>	<b>n.a</b>	<b>34.7</b>
Ave - 2019	108.9	114.5		93.7	94.6	95.8	97.9	108.1		87.9			96.7
Ave - 2020	107.6	112.2		93.2	93.7	97.7	95.8	110.4		87.6			98.0
Ave - 2021	112.3	118.4		100.9	94.5	98.7	108.0	114.4		87.3			95.9
2021													
August	116.6	124.4		108.9	93.7	98.7	110.6	114.2		87.4			95.8
September	116.1	123.7		108.6	94.0	99.1	110.6	114.2		87.4			95.6
October	116.2	123.5		109.2	97.5	98.7	110.6	114.6		88.1			95.5
November	115.6	122.4		109.4	99.2	98.5	110.6	114.5		88.1			95.6
December	118.9	126.7		109.4	104.7	99.6	110.6	114.5		88.1			95.7
2022													
January	118.5	125.9		111.2	104.5	100.8	110.6	114.4		88.1			95.9
February	120.3	128.0		114.3	105.4	102.2	116.1	114.6		88.1			96.4
March	120.2	127.7		114.7	105.1	103.6	100.1	114.6		91.2			98.3
April	121.4	128.9		114.5	111.5	102.8	97.2	114.6		91.2			99.2
May	121.2	128.2		115.4	111.8	102.8	88.1	114.6		91.2			101.2
June	124.1	132.3		115.3	111.5	107.1	88.1	114.6		91.2			101.0
July	130.9	141.9		115.4	111.2	107.7	105.0	114.6		89.9			102.5
August (P)	135.0	147.3		115.8	111.9	109.2	114.0	116.1		91.7			105.3
<b><u>Percentage Change (P)</u></b>													
Aug 2022 over Aug 2021	15.8%	18.4%		6.3%	19.4%	10.5%	3.1%	1.7%		5.0%			9.9%
Aug 2022 over Jul 2022	3.2%	3.8%		0.3%	0.6%	1.3%	8.6%	1.3%		2.1%			2.7%

Source : Samoa Bureau Statistics

(P) : Provisional figures

Note : n.a. Not applicable

**Table 6. LOCAL GOODS COMPONENT OF THE CONSUMER PRICE INDEX**  
(Base Period : Average Prices February 2016 = 100)

Group	All Items	Food and Non Alcoholic Beverages	Alcoholic Beverages, Tobacco and Narcotics	Clothing and Footwear	Housing, Water, Electricity, Gas and other Fuels	Furnishings, Household Equipment and Maintenance	Health	Transport	Communication	Recreation and Culture	Education	Restaurants	Miscellaneous goods and services
<b>Weights</b>	<b>505.3</b>	<b>134.6</b>	<b>104.6</b>	<b>6.0</b>	<b>91.3</b>	<b>3.9</b>	<b>2.2</b>	<b>59.9</b>	<b>51.5</b>	<b>0.4</b>	<b>19.7</b>	<b>22.4</b>	<b>8.8</b>
Ave - 2019	105.5	107.3	116.5	93.8	93.2	100.3	102.5	102.3	104.2	100.0	113.5	103.3	102.3
Ave - 2020	105.3	106.8	120.7	94.2	87.6	100.3	103.0	100.1	104.2	100.0	114.9	109.4	102.3
Ave - 2021	105.9	105.6	122.2	93.8	90.3	100.3	103.0	99.6	107.1	100.0	109.9	111.2	102.3
2021													
August	107.3	106.7	121.9	94.2	98.6	100.3	103.0	100.0	104.2	100.0	109.4	111.4	102.3
September	107.3	106.4	122.1	94.2	98.6	100.3	103.0	100.0	104.2	100.0	109.4	111.4	102.3
October	109.1	107.3	122.2	94.2	100.5	100.3	103.0	100.0	115.9	100.0	109.4	111.4	102.3
November	108.1	115.7	122.1	94.2	83.9	100.3	103.0	98.2	115.9	100.0	109.4	111.7	102.3
December	108.2	115.8	122.3	94.2	83.9	100.3	103.0	97.9	115.9	100.0	109.4	111.7	102.3
2022													
January	108.3	115.1	122.2	94.2	83.9	100.3	103.0	98.2	115.8	100.0	109.4	118.3	102.3
February	108.4	115.4	122.7	94.2	83.9	100.5	103.0	98.2	115.8	100.0	109.4	118.3	102.3
March	108.9	116.6	123.3	94.2	83.9	100.5	103.0	98.2	115.8	100.0	109.4	118.3	102.3
April	108.6	115.8	123.1	94.2	83.9	100.5	103.0	98.2	115.8	100.0	109.4	118.3	102.3
May	109.0	116.9	123.5	94.2	83.9	100.5	103.0	98.2	115.8	100.0	109.4	118.3	102.3
June	111.2	122.4	123.6	94.2	83.9	100.5	103.0	100.1	115.8	100.0	109.4	128.3	102.3
July	114.4	123.9	123.9	90.4	83.9	100.6	103.0	107.9	133.7	100.0	109.4	128.5	102.3
August (P)	116.4	129.5	124.4	90.6	84.7	100.6	103.0	110.6	133.7	100.0	109.4	129.2	102.3
<b><u>Percentage Change (P)</u></b>													
Aug 2022 over Aug 2021	8.5%	21.4%	2.1%	-3.8%	-14.1%	0.2%	0.0%	10.7%	28.4%	0.0%	0.0%	16.0%	0.0%
Aug 2022 over Jul 2022	1.8%	4.5%	0.4%	0.2%	1.0%	0.0%	0.0%	2.5%	0.0%	0.0%	0.0%	0.5%	0.0%

Source : Samoa Bureau Statistics

(P) : Provisional figures

■ Revised figure

**Table 7. LOCAL ITEMS UNDERLYING INDEX**

(Base Period : Average Prices February 2016 = 100)

Group	All Items	Food and Non Alcoholic Beverages	Alcoholic Beverages, Tobacco and Narcotics	Clothing and Footwear	Housing, Water, Electricity, Gas and other Fuels	Furnishings, Household Equipment and Maintenance	Health	Transport	Communication	Recreation and Culture	Education	Restaurants	Miscellaneous goods and services
<b>Weights</b>	<b>185.5</b>	<b>76.1</b>	<b>n.a</b>	<b>6.0</b>	<b>n.a</b>	<b>3.9</b>	<b>1.0</b>	<b>3.4</b>	<b>51.5</b>	<b>n.a</b>	<b>12.3</b>	<b>22.4</b>	<b>8.8</b>
Ave - 2019	103.6	101.6		93.8		100.3	105.2	108.6	104.2		118.5	103.3	102.3
Ave - 2020	104.6	101.9		94.2		100.3	106.3	108.6	104.2		120.6	109.4	102.3
Ave - 2021	105.1	102.1		93.8		100.3	106.3	108.6	107.1		112.7	111.2	102.3
2021													
August	104.0	101.4		94.2		100.3	106.3	108.6	104.2		111.9	111.4	102.3
September	104.1	101.6		94.2		100.3	106.3	108.6	104.2		111.9	111.4	102.3
October	107.5	101.9		94.2		100.3	106.3	108.6	115.9		111.9	111.4	102.3
November	107.7	102.3		94.2		100.3	106.3	108.6	115.9		111.9	111.7	102.3
December	107.8	102.5		94.2		100.3	106.3	108.6	115.9		111.9	111.7	102.3
2022													
January	108.9	103.0		94.2		100.3	106.3	114.4	115.8		111.9	118.3	102.3
February	108.7	102.6		94.2		100.5	106.3	114.4	115.8		111.9	118.3	102.3
March	108.7	102.6		94.2		100.5	106.3	114.4	115.8		111.9	118.3	102.3
April	108.7	102.6		94.2		100.5	106.3	114.4	115.8		111.9	118.3	102.3
May	109.0	103.5		94.2		100.5	106.3	114.4	115.8		111.9	118.3	102.3
June	112.7	109.5		94.2		100.5	106.3	114.4	115.8		111.9	128.3	102.3
July	117.8	109.9		90.4		100.6	106.3	114.4	133.7		111.9	128.5	102.3
August (P)	117.9	109.9		90.6		100.6	106.3	114.4	133.7		111.9	129.2	102.3
<b><u>Percentage Change (P)</u></b>													
Aug 2022 over Aug 2021	13.3%	8.3%		-3.8%		0.2%	0.0%	5.3%	28.4%		0.0%	16.0%	0.0%
Aug 2022 over Jul 2022	0.1%	-0.1%		0.2%		0.0%	0.0%	0.0%	0.0%		0.0%	0.5%	0.0%

Source : Samoa Bureau Statistics

(P) : Provisional figure

Note : n.a. Not applicable

**Table 8. CONSUMER PRICE INDEX (AVERAGE ANNUAL INFLATION RATE).**  
**(Base Period : Average Prices February 2016 = 100)**

Group	All Items	Food and Non Alcoholic Beverages	Alcoholic Beverages, Tobacco and Narcotics	Clothing and Footwear	Housing, Water, Electricity, Gas and other Fuels	Furnishings, Household Equipment, and Maintenance	Health	Transport	Communication	Recreation and Culture	Education	Restaurants	Miscellaneous goods and services
<i>Weights</i>	<b>1000.0</b>	<b>403.7</b>	<b>128.4</b>	<b>21.2</b>	<b>119.6</b>	<b>30.8</b>	<b>4.6</b>	<b>148.5</b>	<b>51.5</b>	<b>6.1</b>	<b>19.7</b>	<b>22.4</b>	<b>43.5</b>
2019	1.0	1.0	4.1	-1.6	4.4	-1.6	3.1	-3.2	0.9	-4.2	2.8	4.4	0.0
2020	-1.6	-1.5	2.7	-0.3	-5.7	1.8	-0.9	-6.1	0.0	-0.3	1.2	5.9	1.0
2021	3.1	3.4	1.3	5.8	3.1	0.9	6.5	7.0	2.8	-0.3	-4.3	1.7	-1.6
2021													
August	-1.7	-3.8	2.0	2.1	-2.6	1.0	3.6	-1.1	0.0	-0.5	-2.8	3.8	-0.7
September	-0.8	-2.7	1.8	2.9	-0.9	1.1	4.6	0.8	0.0	-0.7	-3.1	3.1	-1.0
October	0.5	-0.8	1.6	3.8	1.1	1.0	5.7	2.6	0.9	-0.7	-3.5	2.5	-1.2
November	1.8	1.2	1.4	4.7	2.1	1.0	6.4	4.7	1.9	-0.5	-3.9	1.9	-1.4
December	3.1	3.4	1.3	5.8	3.1	0.9	6.5	7.0	2.8	-0.3	-4.3	1.7	-1.6
2022													
January	4.5	5.3	1.2	6.9	5.3	0.7	6.5	9.2	3.7	0.1	-4.7	2.0	-1.9
February	5.7	7.0	1.1	8.4	6.6	1.0	6.5	11.0	4.7	0.4	-4.3	2.4	-1.9
March	6.7	8.5	1.0	10.0	7.8	1.2	5.8	12.5	5.6	1.1	-4.0	2.7	-1.7
April	7.6	10.0	0.9	11.5	7.8	1.3	5.1	13.8	6.5	1.6	-3.6	3.0	-1.4
May	8.2	11.0	0.8	13.1	7.9	1.7	3.8	14.1	7.4	1.9	-3.2	3.4	-0.9
June	8.8	12.2	0.6	14.5	6.3	2.4	2.4	14.6	8.4	2.0	-2.8	4.5	-0.1
July	9.5	13.6	0.7	13.6	4.7	3.1	1.7	15.3	10.7	2.1	-2.4	5.6	0.7
August (P)	10.3	14.9	0.8	12.9	3.2	3.8	1.0	16.9	13.1	2.5	-2.0	6.7	1.5

Source : Samoa Bureau Statistics

(P) : Provisional figures



**Table 9 Consumer Price Index (Percentage change and Average Annual Inflation)**

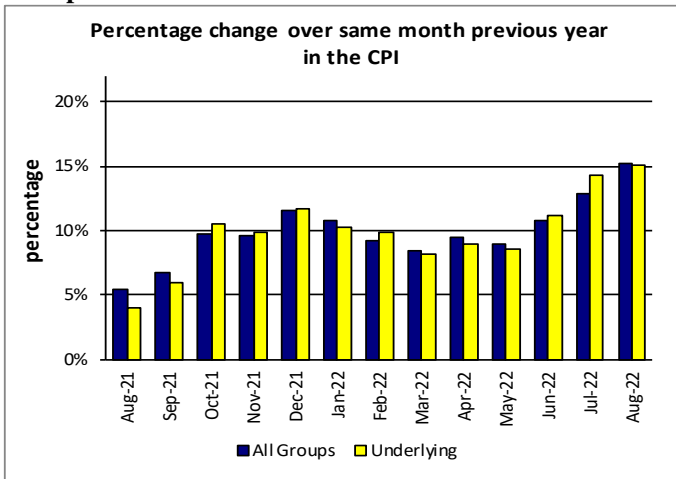
(Base Period: Average Prices February 2016 = 100)

Period	CPI ALL ITEMS	Percentage change over previous month	Last 12 months over previous 12 months	UNDERLYING ALL ITEMS	Percentage change over previous month	Last 12 months over previous 12 months	LOCAL COMPONENT	Percentage change over previous month	Last 12 months over previous 12 months	IMPORTED COMPONENT	Percentage change over previous month	Last 12 months over previous 12 months
2019	108.3	-	1.0	107.2	-	0.5	105.5	-	2.8	111.1	-	-0.7
2020	106.6	-	-1.6	106.6	-	-0.5	105.3	-	-0.2	107.9	-	-2.9
2021	109.9	-	3.1	110.1	-	3.2	105.9	-	0.6	114.0	-	5.7
2021												
August	112.7	1.5	-1.7	112.6	1.6	-1.5	107.3	0.8	-1.1	118.3	2.2	-2.3
September	112.8	0.0	-0.8	112.3	-0.3	-0.8	107.3	0.0	-0.8	118.4	0.1	-0.8
October	113.6	0.7	0.5	113.5	1.0	0.6	109.1	1.7	-0.4	118.2	-0.1	1.3
November	113.0	-0.5	1.8	113.1	-0.4	1.9	108.1	-0.9	0.2	118.1	-0.1	3.4
December	115.3	2.0	3.1	115.4	2.0	3.2	108.2	0.0	0.6	122.7	3.9	5.7
2022												
January	114.8	-0.4	4.5	115.4	0.1	4.2	108.3	0.1	1.4	121.6	-0.9	7.6
February	115.3	0.4	5.7	116.6	1.0	5.3	108.4	0.2	2.0	122.4	0.7	9.3
March	116.2	0.7	6.7	116.6	0.0	6.2	108.9	0.4	2.7	123.6	1.0	10.8
April	117.2	0.9	7.6	117.4	0.7	7.0	108.6	-0.3	3.1	126.0	2.0	12.1
May	117.3	0.1	8.2	117.3	-0.1	7.6	109.0	0.4	3.6	125.8	-0.2	12.7
June	121.0	3.2	8.8	120.5	2.7	8.4	111.2	2.0	3.9	131.1	4.2	13.6
July	125.3	3.6	9.5	126.7	5.2	9.4	114.4	2.9	4.4	136.6	4.2	14.5
August (P)	129.9	3.6	10.3	129.6	2.3	10.4	116.4	1.8	4.9	143.6	5.1	15.6

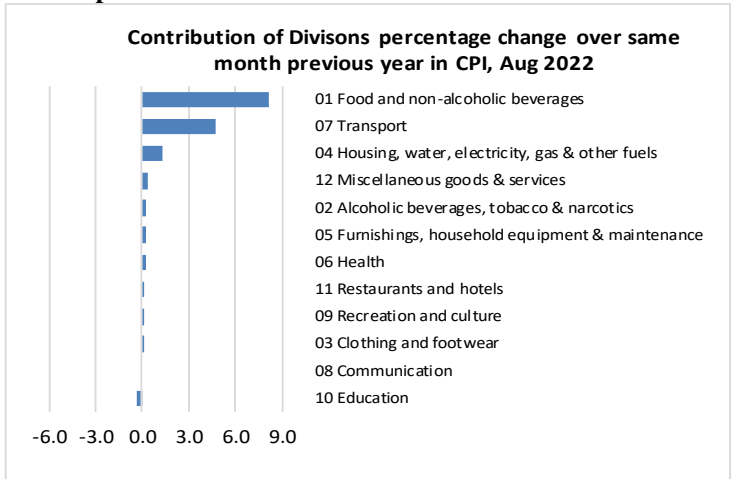
Source : Samoa Bureau Statistics

(P) : Provisional figures

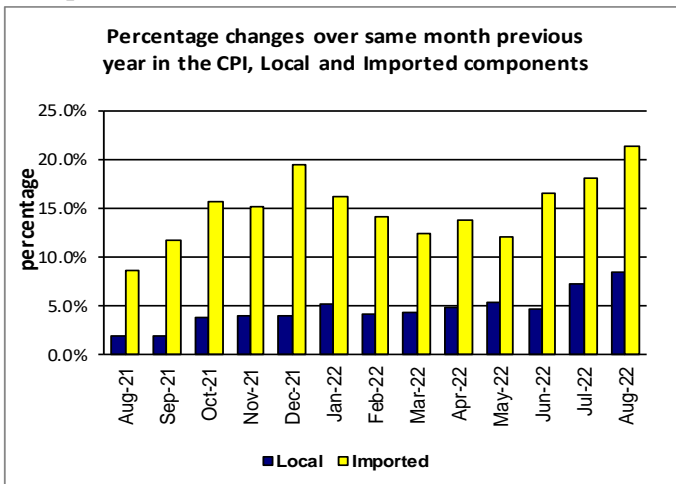
**Graph.5**



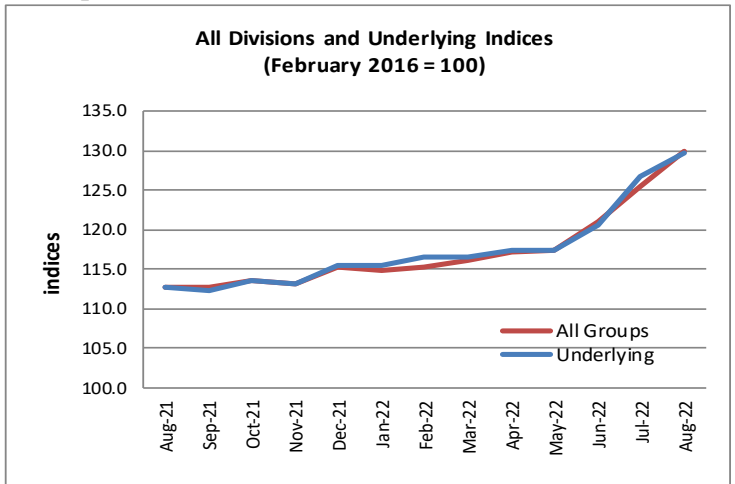
**Graph.6**



**Graph.7**



**Graph.8**



**Graph.9**

