

Please address all correspondence  
to the Government Statistician  
In reply, please quote the file reference



File Ref: IAS Q2/14

GOVERNMENT OF SAMOA

# SAMOA BUREAU OF STATISTICS

## International Arrival Statistics SECOND QUARTER 2014

### HIGHLIGHTS OF THE QUARTER

This quarter compared with second quarter 2013:

- Total arrivals (43,047) were up by 5 percent.
- Total visitors (31,728) were up by 2 percent.
- More visitors arrived from Australia (up by 1,058) and New Zealand (up by 644) but fewer visitors arrived from American Samoa (down by 1,238), and USA (down by 74).
- Samoa residents departed on more trips to New Zealand (up by 5,780) but fewer to Australia (down by 280), USA (down by 188) and American Samoa (down by 105).
- Samoa residents departed on 13,440 trips, up by 9 percent.

Q2 2014	Number	Change from previous quarter	Change from previous year
All Arrivals	43,047	17.2%	4.6%
All Visitors	31,728	24.6%	1.5%

### OVERVIEW

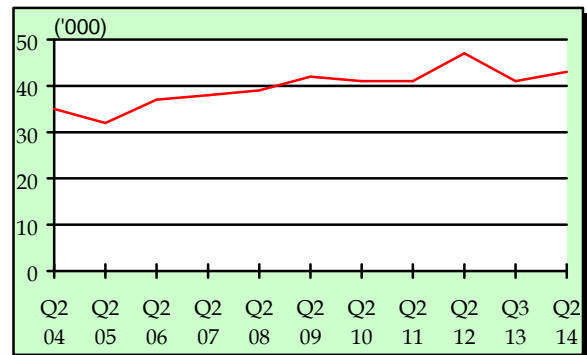
#### 1. ARRIVALS

##### 1.1 TOTAL ARRIVALS

The total International Arrival Statistics documented during the reference period (table 1) revealed an increase of 17.2 percent when compared to the previous quarter (January - March 2014) and an increase of 4.6 percent over the corresponding quarter of April to June 2013. (Refer Fig. 1.1).

As usual, Air being the most preferred mode of travel to Samoa, accounting for 95.2 percent (40,975) of total arrivals, while those that arrived by Sea accounted for the remaining 4.8 percent (2,072).

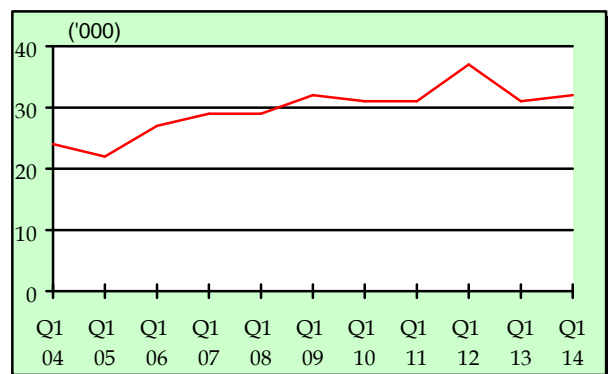
Fig. 1.1: 2<sup>nd</sup> Quarter Total Arrivals, 2004 - 2014



##### 1.2 TOTAL VISITORS

Total Visitors of 31,728 for the quarter under review revealed an increase of 24.6 percent over the previous quarter, and an increase of 1.5 percent in comparison to the corresponding quarter of April – June 2013. (Refer Fig. 1.2).

Fig. 1.2: 2<sup>nd</sup> Quarter Total Visitors, 2004 - 2014



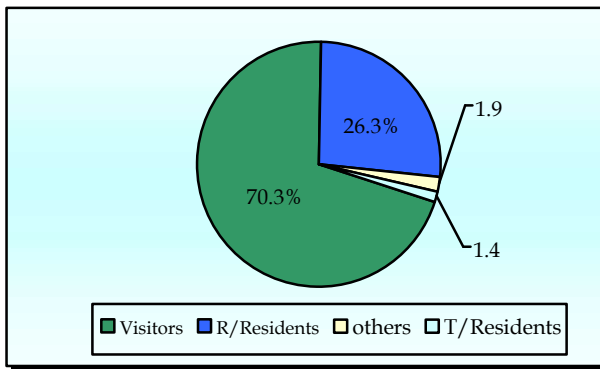
**1.3 TOTAL ARRIVALS BY PURPOSE OF ENTRY**

Visitors, including transit, made up the largest component of all arrivals with 36.3 percent (15,629) being males and 34.1 percent (14,653) being females.

Male and female returning residents made up 15.3 percent (6,573) and 11.0 (4,746) percent respectively of total arrivals. Temporary residents made up 0.8 percent (343) being males and 0.6 percent (277) being females. Other purposes of entry made up the remainder of 1.9 percent of total arrival. (Refer Fig. 1.3).

The majority of inbound travellers to Samoa during the reference period were aged between 20 years and 59 years.

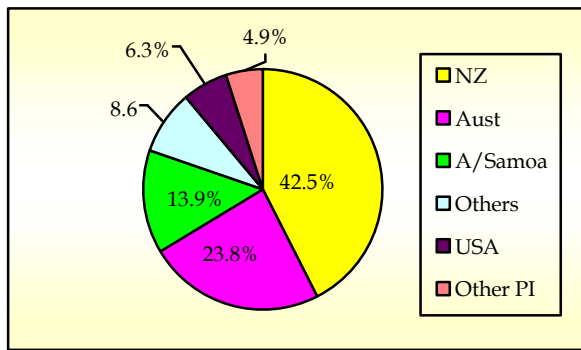
Fig. 1.3: Total Arrivals, by Purpose of Entry



**1.4 VISITORS ARRIVALS BY COUNTRY OF USUAL RESIDENCE**

New Zealand still remains as the leading country in visitors' arrival by country of usual residence (Table 3) accounting for 42.5 percent of total visitors with 13,482. Australia followed next with a distant 23.8 percent share (7,564) which is then trailed by American Samoa with 13.9 percent (4,403) while the United States of America anchored the principal source markets with a far-off share of 6.3 percent (1,990). (Refer Fig. 1.4).

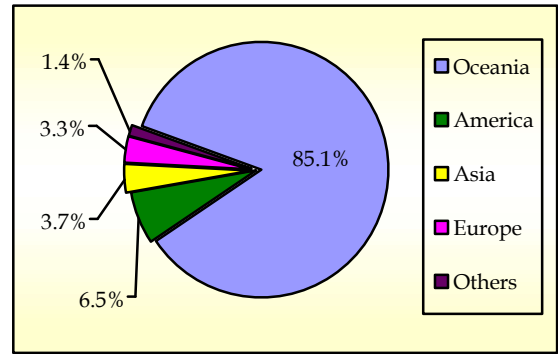
Fig. 1.4: Total Visitors, by Country of Usual Residence



**1.5 VISITORS ARRIVALS BY REGION**

The Oceanic region had the highest share of total visitors with 85.1 percent trailed by America and Asia with 6.5 percent and 3.7 percent respectively. The European region showed the lowest share with 3.3 percent. (Refer Fig. 1.5)

Fig 1.5: Total Visitors, by Region



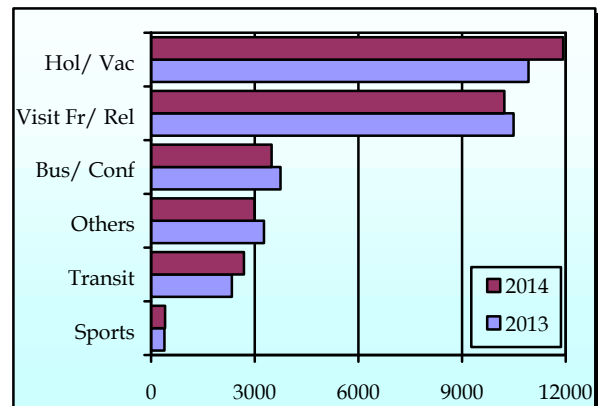
**1.6 VISITORS BY PURPOSE OF VISIT**

As illustrated in Table 4, New Zealand, Australia, American Samoa, and the United States of America constituted 86.5 percent of all visitors visiting Samoa while other countries round up the remaining 13.5 percent during the reference period.

Visitors that were here to visit friends/ relatives accounted for 32.2 percent of all visitors. 37.6 percent of all visitors entered for holiday/ vacation. Business and conference visitors made up 11.0 percent.

Transients bound for other destinations and those who were here for other purposes registered 8.5 and 9.4 percent respectively. Fig. 1.6 depicts total visitors by purpose of visit during the reference period compared to the first quarter of 2013.

Fig 1.6: Total Visitors, by Purpose of Visit



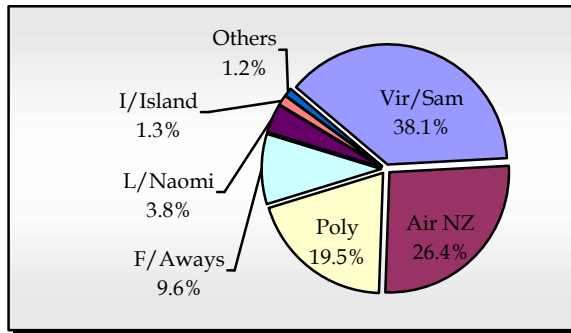
### 1.7 TOTAL VISITORS BY CARRIER

As tabulated in Table 5, Virgin Samoa (formerly known as Polynesian Blue) leads the way for arrivals by carriers' during the reference period with a 38.1 percent share (16,395 passengers) followed by Air New Zealand with a share of 26.4 percent (11,346 passengers).

Polynesian Airlines brought in 19.5 percent (8,386) of total arrivals while Fiji Airways (formerly known as Air Pacific) recorded a 9.6 percent share (4,127).

Fig. 1.7 illustrates total arrivals by carrier during the reference period.

Fig. 1.7: Total Arrivals, by Carrier



### 1.8 VISITORS DURATION AND PLACE OF STAY

The usual trend of visitor's duration of stay in Samoa (Table 6) is between 7 days and 30 days, as revealed in Fig 1.8.

61.1 percent (17,750) of total visitors reported staying in private accommodations or with families/relatives, while only 37.3 percent (10,821) stayed in hotels/ motels. The remaining 1.6 percent (472) did not reveal their place of stay during the reference period. (Refer Fig. 1.9).

Fig. 1.8: Total Visitors, by Duration of Stay

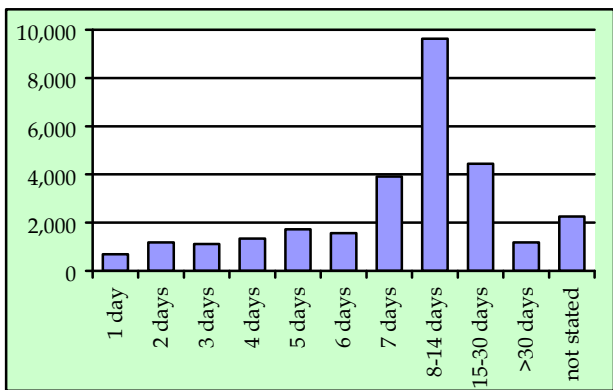
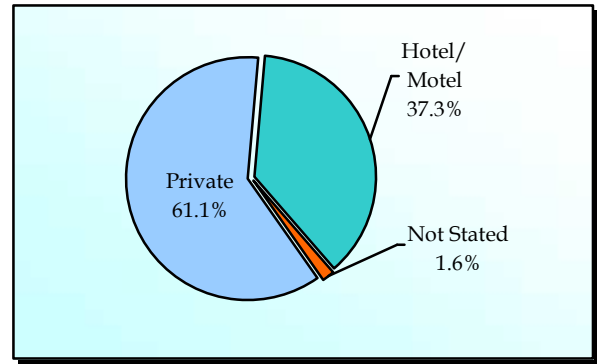


Fig. 1.9: Total Visitors, by Place of Stay



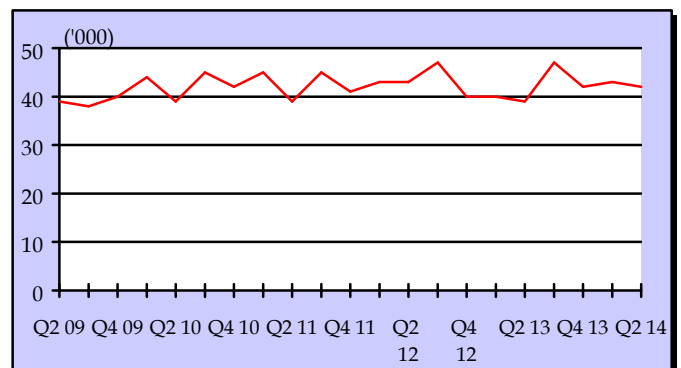
## 2. DEPARTURES

### 2.1 TOTAL DEPARTURES

The total International Departure Statistics recorded during the reference period (table 1) revealed a decrease of 2.6 percent when compared to the previous quarter (January - March 2014) but an increase of 5.7 percent over the corresponding quarter of April - June 2013. (Refer Fig. 2.1).

Furthermore, Air was the most preferred mode of travel away from Samoa, accounting for 94.2 percent (39,242) of total departures, while those that departed by sea accounted for the remaining 5.8 percent (2,434).

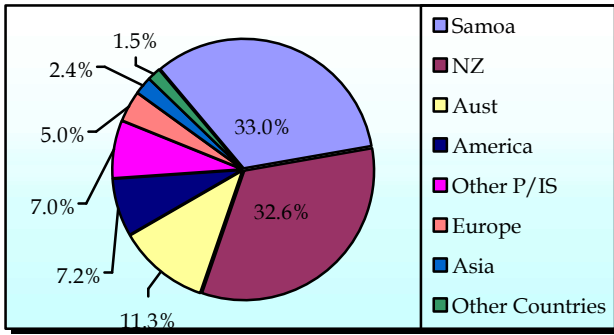
Fig. 2.1: Quarterly Total Departures, 2009 - 2014



### 2.2 TOTAL DEPARTURE BY NATIONALITY

Departures from Samoan, New Zealand, Australian, and the United States of American nationals (Table 7) accounted for 83.8 percent (34,992) of total departures. Fig. 2.2 provides a more detailed graphical analysis of total departure by nationality during the reference period.

Fig. 2.2: Total Departures, by Nationality



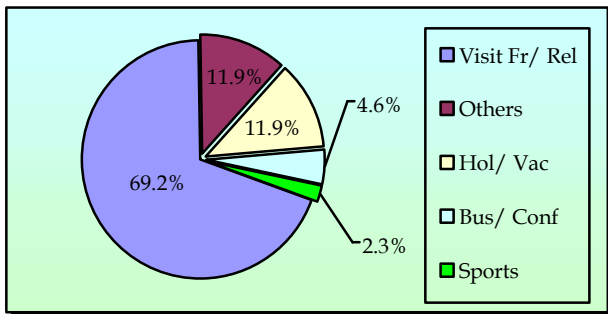
**2.3 PURPOSE OF TRAVEL ABROAD**

During the reference period, a total of 13,442 (Table 8) Samoa citizens left our shores on overseas trips. Of this total, 56.1 percent (7,538) were males and the remaining 43.9 percent (5,904) were females.

Visiting friends/ relatives abroad made up the largest component of all Samoa citizens travelling abroad accounting for 69.2 percent (9,301) followed by those that travelled overseas for Holiday/ Vacation with 11.9 percent (1,602).

Those that travelled for Business/ Conference reported 4.6 percent (623) while Sporting activities made up the remainder of departing Samoa citizens with only 2.3 percent (315). This is graphically illustrated in Fig. 2.3.

Fig. 2.3: Purpose of Travel Abroad



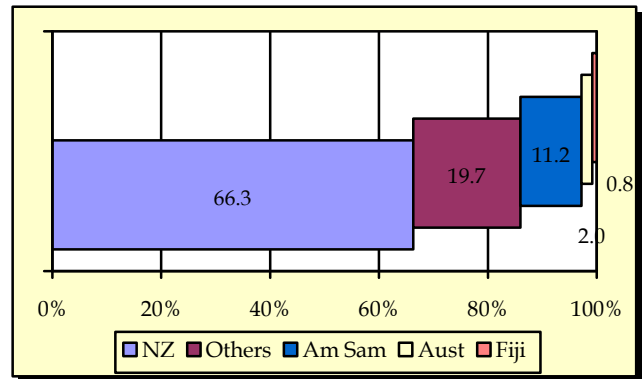
**2.4 COUNTRY OF STAY ABROAD**

The majority of Samoa citizens leaving our shores traveled to New Zealand as indicated by 66.3 percent (8,913) in Table 9 while 11.2percent (1,501) of departing Samoa citizens traveled to American Samoa.

Australia made up 2.0 percent (270) while Fiji made up 0.8 percent (114) of Samoa citizens travelling to overseas countries.

Fig. 2.4 portrays a graphical impression of the country of stay abroad by Samoa Citizens during the reference period.

Fig. 2.4: Country of Stay Abroad



**2.6 DEPARTURE BY OCCUPATION**

As illustrated in Table 10, the majority of Samoa citizens departing our shores were professionals with 14.5 percent (6,054) followed by technicians with 10.7 percent (4,455) then by students with 10.4 (4,334). A more comprehensive graphical analysis of departures by occupation for Samoa citizens is exhibited in Fig. 2.5.

Fig. 2.5: Departures by Occupation

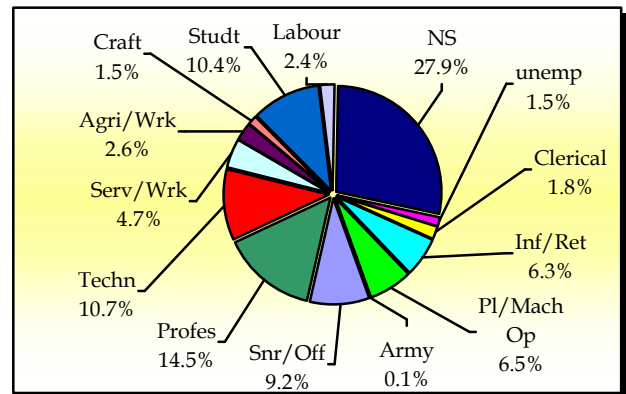
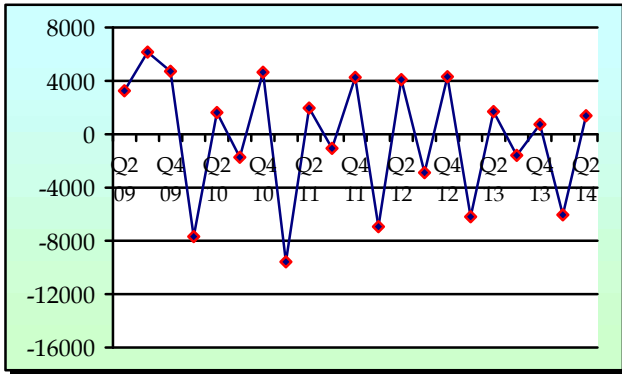


Table 10 further revealed that the majority of Samoa citizens departing our shores have either completed or are currently attending Tertiary Education level, yielding 38.5 percent.

### 3. NET MIGRATION

During the reference period, net migration stood at 1,371 (Table 1) implying that there were more incoming (arrivals) than out-going travelers (departures). This shows a decrease of 19.5 percent when compared to the same period of 2013 where net migration stood at 1,703.

Fig.3.1: Quarterly Net Migration, 2009 - 2014



Detailed information for the reference period is attached in Tables 1 – 10 and the appendix shows longer time series.

### BACKGROUND

The sourced documents for the compilation of International Arrival Statistics were the immigration arrival and departure card forms. These forms are completed by all incoming and outgoing travelers at the three local points of entry namely (1) Apia wharf (2) Faleolo and (3) Fagalii international airports.

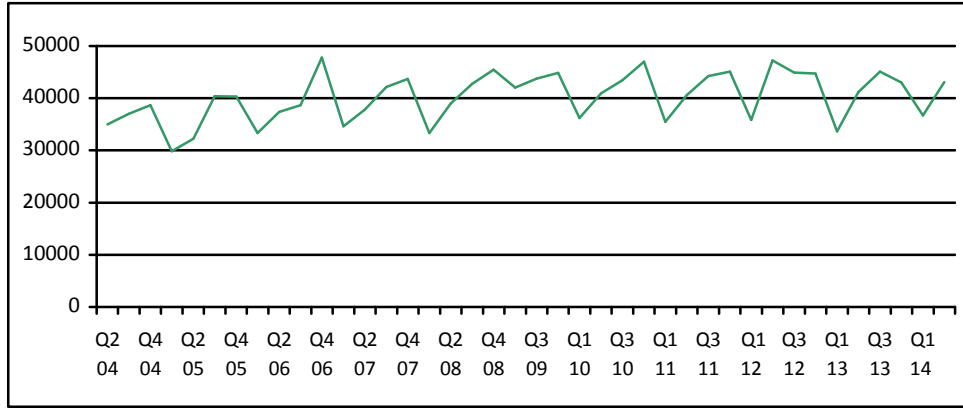
International arrival statistics are compiled on a monthly, quarterly and annual basis. These reports can also be extracted from our website: [www.sbs.gov.ws](http://www.sbs.gov.ws)

The migration report for the third quarter of 2014 will be released on 5<sup>th</sup> December 2014.

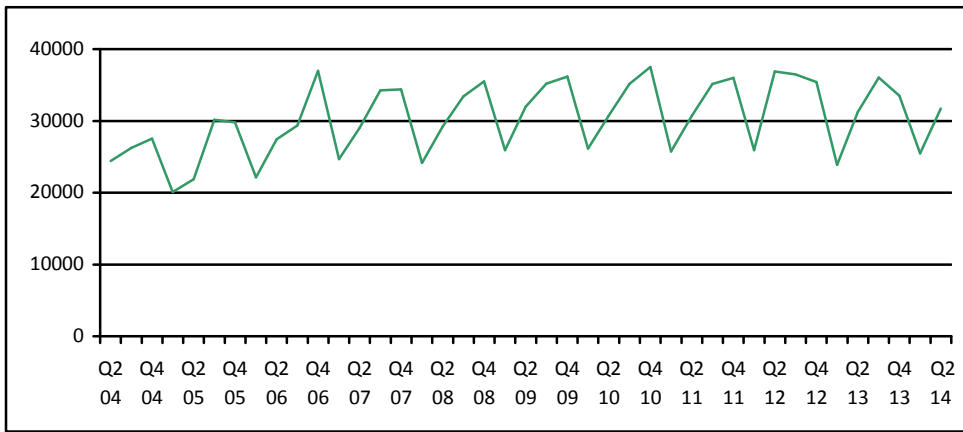
**Papali'i Fa'asavalu Benjamin Sila**  
**ACTING GOVERNMENT STATISTICIAN**

**APPENDIX**

**Graph 1: Quarterly Total Arrivals, 2<sup>nd</sup> quarter 2004 –2<sup>nd</sup> quarter 2014**



**Graph 2: Quarterly Total Visitors, 2<sup>nd</sup> quarter 2004 –2<sup>nd</sup> quarter 2014**



**Graph 3: Visitors Percentage Change over previous quarter, 2<sup>nd</sup> quarter 2004 –2<sup>nd</sup> quarter 2014**

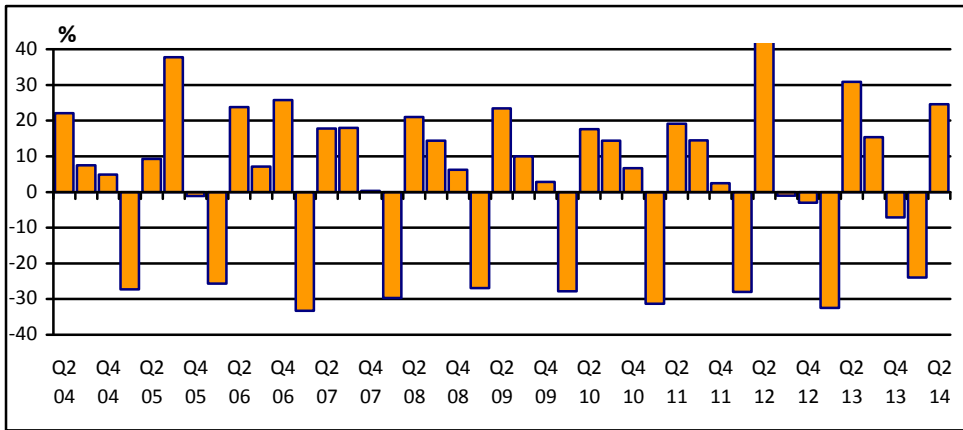


Table 1: Quarterly Arrival and Departure by Mode of Tavel and Net Migration, 2004- 2014.

Period	Visitors Arrivals			Total Arrivals			Total Departures			Net
	Air	Sea	Total	Air	Sea	Total	Air	Sea	Total	Migration
2004	93,946	4,209	98,155	129,517	11,864	141,381	131,277	12,303	143,580	-2,199
2005	98,544	3,263	101,807	132,200	10,557	142,757	135,008	10,936	145,944	-3,187
2006	112,411	3,471	115,882	147,807	9,349	157,156	147,991	9,489	157,480	-324
2007	118,653	3,699	122,352	150,584	7,631	158,215	158,099	8,578	166,677	-8,458
2008	118,420	3,743	122,163	151,883	8,628	160,511	161,482	9,908	171,390	-10,879
2009	127,298	1,940	129,238	161,825	5,095	166,911	156,768	6,069	162,388	4,523
2010	126,970	2,530	129,500	162,052	5,539	167,591	164,426	6,293	170,719	-3,128
2011	124,706	2,898	127,604	159,660	5,738	165,398	163,605	6,216	169,821	-4,423
2012	131,945	2,749	134,694	167,211	5,509	172,720	167,842	6,297	174,139	-1,419
2013	122,171	2,502	124,673	157,542	5,335	162,877	162,333	5,885	168,218	-5,341
2014	55,912	1,278	57,190	76,276	3,487	79,763	80,384	4,058	84,446	-4,683
<b>2008</b>										
4th Quarter	34,528	959	35,487	43,158	2,278	45,436	39,467	1,994	41,461	3,975
<b>2,009</b>										
1st Quarter	25,406	534	25,940	35,092	1,143	36,235	44,266	1,570	45,836	-9,601
2nd Quarter	31,575	427	32,002	40,381	1,650	42,031	36,599	2,175	38,774	3,257
3rd Quarter	34,620	526	35,146	42,535	1,253	43,779	36,436	1,190	37,626	6,153
4th Quarter	35,697	453	36,150	43,817	1,049	44,866	39,467	1,134	40,152	4,714
<b>2010</b>										
1st Quarter	25,662	463	26,125	35,293	919	36,212	42,563	1,335	43,898	-7,686
2nd Quarter	30,040	677	30,717	39,257	1,685	40,942	37,383	1,933	39,316	1,626
3rd Quarter	34,546	602	35,148	42,065	1,374	43,439	43,804	1,381	45,185	-1,746
4th Quarter	36,722	788	37,510	45,437	1,561	46,998	40,676	1,644	42,320	4,678
<b>2011</b>										
1st Quarter	24,972	794	25,766	34,010	1,440	35,450	43,290	1,737	45,027	-9577
2nd Quarter	30,092	590	30,682	39,208	1,399	40,607	37,148	1,509	38,657	1950
3rd Quarter	34,478	666	35,144	42,889	1,355	44,244	43,784	1,516	45,300	-1056
4th Quarter	35,164	848	36,012	43,553	1,544	45,097	39,383	1,454	40,837	4260
<b>2012</b>										
1st Quarter	25,439	497	25,936	34,835	995	35,830	41,389	1,377	42,766	-6,936
2nd Quarter	35,886	985	36,871	45,168	2,085	47,253	40,819	2,346	43,165	4,088
3rd Quarter	35,890	607	36,497	43,867	1,017	44,884	46,659	1,101	47,760	-2,876
4th Quarter	34,730	660	35,390	43,341	1,412	44,753	38,975	1,473	40,448	4,305
<b>2013</b>										
1st Quarter	23,293	580	23,873	32,484	1,140	33,624	38,219	1,602	39,821	-6,197
2nd Quarter	30,594	651	31,245	39,785	1,365	41,150	37,728	1,719	39,447	1,703
3rd Quarter <sup>1</sup>	35,463	593	36,056	43,688	1,421	45,109	45,349	1,349	46,698	-1,589
4th Quarter	32,821	678	33,499	41,585	1,409	42,994	41,037	1,215	42,252	742
<b>2014</b>										
<b>1st Quarter</b>	<b>24,911</b>	<b>551</b>	<b>25,462</b>	<b>35,301</b>	<b>1,415</b>	<b>36,716</b>	<b>41,142</b>	<b>1,624</b>	<b>42,770</b>	<b>-6,054</b>
<b>2nd Quarter</b>	<b>31,001</b>	<b>727</b>	<b>31,728</b>	<b>40,975</b>	<b>2,072</b>	<b>43,047</b>	<b>39,242</b>	<b>2,434</b>	<b>41,676</b>	<b>1,371</b>

Source: Ministry of the Prime Minister and Cabinet - Immigration Division, Ministry for Revenue - Customs Division, and Samoa Bureau of Statistics.

1: Provisional figures

■ : Revised Figures

Table 2: Arrivals by Age, Purpose of Entry and Gender, Second Quarter 2014 <sup>1</sup>

AGE	Purpose of Visit																	
	TOTAL			Visitors			Returning Residents			Transit			Temporary Resident			Others		
	TOTAL	Male	Female	Total	Male	Female	Total	Male	Female	Total	Male	Female	Total	Male	Female	Total	Male	Female
<b>TOTAL</b>	<b>43,047</b>	<b>22,987</b>	<b>20,060</b>	<b>27,597</b>	<b>13,917</b>	<b>13,680</b>	<b>11,319</b>	<b>6,573</b>	<b>4,746</b>	<b>2,685</b>	<b>1,712</b>	<b>973</b>	<b>620</b>	<b>343</b>	<b>277</b>	<b>826</b>	<b>442</b>	<b>384</b>
0 - 4	1,838	900	938	1,242	605	637	441	218	223	107	55	52	26	12	14	22	10	12
5 - 9	1,563	759	804	1,155	562	593	287	136	151	79	42	37	20	8	12	22	11	11
10 - 14	1,453	721	732	1,073	535	538	247	129	118	79	37	42	19	8	11	35	12	23
15 - 19	2,076	1,059	1,017	1,381	664	717	507	277	230	130	90	40	16	8	8	42	20	22
20 - 24	3,278	1,696	1,582	1,929	818	1,111	1,029	689	340	207	136	71	58	23	35	55	30	25
25 - 29	3,813	2,028	1,785	2,416	1,091	1,325	1,032	694	338	239	164	75	52	34	18	74	45	29
30 - 34	3,627	2,010	1,617	2,231	1,100	1,131	1,027	659	368	268	186	82	47	33	14	54	32	22
35 - 39	3,421	1,881	1,540	2,116	1,081	1,035	923	554	369	260	175	85	64	38	26	58	33	25
40 - 44	3,802	2,125	1,677	2,361	1,263	1,098	1,024	607	417	291	192	99	48	25	23	78	38	40
45 - 49	3,972	2,140	1,832	2,515	1,305	1,210	1,071	624	447	252	145	107	57	30	27	77	36	41
50 - 54	4,099	2,214	1,885	2,658	1,385	1,273	1,060	579	481	252	171	81	51	35	16	78	44	34
55 - 59	3,598	1,980	1,618	2,268	1,239	1,029	973	528	445	212	128	84	58	34	24	87	51	36
60 - 64	2,693	1,436	1,257	1,811	964	847	619	322	297	136	87	49	42	17	25	85	46	39
65 - 69	1,988	1,071	917	1,309	695	614	515	275	240	100	61	39	30	18	12	34	22	12
70 - 74	1,055	581	474	682	386	296	287	145	142	45	29	16	22	12	10	19	9	10
75 +	771	386	385	450	224	226	277	137	140	28	14	14	10	8	2	6	3	3
<b>% Distribution <sup>2</sup></b>	<b>100.0</b>	<b>53.4</b>	<b>46.6</b>	<b>64.1</b>	<b>32.3</b>	<b>31.8</b>	<b>26.3</b>	<b>15.3</b>	<b>11.0</b>	<b>6.2</b>	<b>4.0</b>	<b>2.3</b>	<b>1.4</b>	<b>0.8</b>	<b>0.6</b>	<b>1.9</b>	<b>1.0</b>	<b>0.9</b>

**Source:** Ministry of the Prime Minister and Cabinet - Immigration Division, Ministry for Revenue - Customs Division, and Samoa Bureau of Statistics.

1: Provisional figures

2: Figures are subject to rounding errors



Table 3: Visitors Arrivals by Country of Usual Residence and Mode of Travel, Second Quarter 2014 <sup>1</sup>

Country of Usual Residence	Mode of Travel		TOTAL	Percentage <sup>2</sup>
	Air	Sea		
<b>OCEANIA</b>	<b>26,433</b>	<b>577</b>	<b>27,010</b>	<b>85.1</b>
American Samoa	4,181	222	<b>4,403</b>	13.9
Fiji	612	6	<b>618</b>	1.9
Cook Island	38	0	<b>38</b>	0.1
Other Pacific Is	676	229	<b>905</b>	2.9
New Zealand	13,398	84	<b>13,482</b>	42.5
Australia	7,528	36	<b>7,564</b>	23.8
<b>EUROPE</b>	<b>1,006</b>	<b>37</b>	<b>1,043</b>	<b>3.3</b>
United Kingdom	211	7	218	0.7
Scandinavia	27	0	27	0.1
Benelux	16	0	16	0.1
Germany	371	7	378	1.2
Other Europe	381	23	404	1.3
<b>AMERICA</b>	<b>1,985</b>	<b>77</b>	<b>2,062</b>	<b>6.5</b>
U.S.A	1,917	73	1,990	6.3
Canada	68	4	72	0.2
<b>ASIA</b>	<b>1,151</b>	<b>24</b>	<b>1,175</b>	<b>3.7</b>
Japan	129	2	131	0.4
China	473	4	477	1.5
Other Asia	517	18	535	1.7
Korea	32	0	32	0.1
<b>OTHERS</b>	<b>298</b>	<b>4</b>	<b>302</b>	<b>1.0</b>
<b>NOT STATED</b>	<b>128</b>	<b>8</b>	<b>136</b>	<b>0.4</b>
<b>TOTAL</b>	<b>31,001</b>	<b>727</b>	<b>31,728</b>	<b>100%</b>
<b>PERCENTAGE DISTRIBUTION</b>	<b>97.7</b>	<b>2.3</b>	<b>100.0%</b>	

**Source:** Ministry of the Prime Minister and Cabinet - Immigration Division, Ministry for Revenue - Customs Division, and Samoa Bureau of Statistics.

1: Provisional figures.

2: Figures are subject to rounding errors

- Note:**
- (i) Visitors refer to all person visiting Samoa other than returning residents and also expatriates who are employed and living in Samoa (**include transit**).
  - (ii) Visitors also include Samoan citizens whose country of usual residence are country abroad.
  - (iii) **Scandinavia**- refers to countries of Norway, Sweden, Finland and Denmark.
  - (iv) **Benelux:** - refers to countries of Belgium, Netherlands and Luxembourg.
  - (v) **Exclude Cruise Liner Passengers.**

Table 4: Total Visitors by Usual Residence and Purpose of Visit, Second Quarter 2014 <sup>1</sup>

Usual Residence	Purpose of Visit								
	TOTAL	% <sup>2</sup>	Holiday/ Vacation	Business/ Conference	Visit Friends/ Relatives	Sports	Transit	Others	Not Stated
<b>TOTAL</b>	<b>31,728</b>		<b>11,929</b>	<b>3,490</b>	<b>10,224</b>	<b>408</b>	<b>2,685</b>	<b>1,468</b>	<b>1,524</b>
American Samoa	4,403	13.9	634	340	1,626	90	881	302	530
Fiji	618	1.9	62	219	105	39	118	39	36
Cook Island	38	0.1	1	12	10	2	5	4	4
Other Pacific Is	905	2.9	78	233	144	13	324	56	57
New Zealand	13,482	42.5	5,967	1,412	4,591	110	423	571	408
Australia	7,564	23.8	3,323	719	2,829	79	161	223	230
United Kingdom	218	0.7	135	18	21	8	5	23	8
Scandinavia	27	0.1	25	0	1	0	1	0	0
Benelux	16	0.1	7	1	2	1	4	1	0
Germany	378	1.2	337	5	19	0	10	5	2
Other Europe	404	1.3	251	26	20	39	31	17	20
U.S.A.	1,990	6.3	558	250	688	15	173	153	153
Canada	72	0.2	39	4	13	1	2	10	3
Japan	131	0.4	58	45	14	3	7	4	0
China	477	1.5	66	119	26	4	221	22	19
Other Asia	535	1.7	154	53	41	0	237	20	30
Other Countries	302	1.0	184	24	50	3	27	8	6
Korea	32	0.7	26	2	1	0	1	1	1
Not Stated	136	3.1	24	8	23	1	54	9	17
<b>Percentage Distribution <sup>2</sup></b>	<b>100.0</b>		<b>37.6</b>	<b>11.0</b>	<b>32.2</b>	<b>1.3</b>	<b>8.5</b>	<b>4.6</b>	<b>4.8</b>

**Source:** Ministry of the Prime Minister and Cabinet - Immigration Division, Ministry for Revenue - Customs Division and Samoa Bureau of Statistics.

**Note :** Total visitors include transit.

: Sports was re-introduced again in the Purpose of Visit Category as of August 2008.

1: Provisional figures

2: Figures are subject to rounding errors

Table 5: Total Arrivals by Carrier and Purpose of Entry, Second Quarter 2014 <sup>1</sup>

Carrier	TOTAL	Purpose of Entry				
		Returning Residents	% <sup>2</sup>	Total Visitors	% <sup>2</sup>	
<b>TOTAL</b>	<b>43,047</b>	<b>100%</b>	<b>11,319</b>	<b>26.3</b>	<b>31,728</b>	<b>73.7</b>
<b>AIR</b>	<b>40,975</b>	<b>95.2</b>	<b>9,974</b>	<b>23.2</b>	<b>31,001</b>	<b>72.0</b>
Virgin Samoa <sup>3</sup>	16,395	38.1	3,175	7.4	13,220	30.7
Polynesian	8,386	19.5	3,140	7.3	5,246	12.2
Inter Island	568	1.3	155	0.4	413	1.0
Air New Zealand	11,346	26.4	2,519	5.9	8,827	20.5
Fiji Airways <sup>4</sup>	4,127	9.6	964	2.2	3,163	7.3
Other Air Carrier	153	0.4	21	0.0	132	0.3
<b>SEA</b>	<b>2,072</b>	<b>4.6</b>	<b>1,345</b>	<b>3.1</b>	<b>727</b>	<b>1.7</b>
Lady Naomi	1,622	3.8	1,208	2.8	414	1.0
Yacht	6	0.0	0	0.0	6	0.0
Other Sea Carrier	444	0.8	137	0.3	307	0.7

**Source:** Ministry of the Prime Minister and Cabinet - Immigration Division, Ministry for Revenue - Customs Division and Samoa Bureau of Statistics.

**Note:** Total visitors include transit.

- 1: Provisional figures
- 2: Figures are subject to rounding errors
- 3: Polynesian Blue is now called Virgin Samoa
- 4: Air Pacific is now called Fiji Airways

Table 6: Visitors by Duration of Stay and Place of Stay, Second Quarter 2014 <sup>1</sup>

Duration of Stay	Place of Stay			
	TOTAL	Hotel/Motel	Private	Not Stated
<b>TOTAL</b>	<b>29,043</b>	<b>10,821</b>	<b>17,750</b>	<b>472</b>
1day	686	278	378	30
2days	1,183	657	506	20
3days	1,118	572	527	19
4days	1,345	606	706	33
5days	1,730	855	847	28
6days	1,565	981	569	15
7days	3,915	2,113	1,760	42
8-14days	9,632	3,750	5,765	117
15-30days	4,437	651	3,730	56
31-60days	755	99	651	5
61-90days	232	20	207	5
91-180days	157	18	139	0
181-365days	36	5	29	2
Not Stated	2,252	216	1,936	100
<b>Percentage Distribution</b>	<b>100.0</b>	<b>37.3</b>	<b>61.1</b>	<b>1.6</b>

**Source:** Ministry of the Prime Minister and Cabinet - Immigration Division,  
Ministry for Revenue - Customs Division and Samoa Bureau of Statistics.

**Note:** Visitors here, exclude transit.

1: Provisional figures

Table 7: Departures by Nationality, Citizenship and Gender, Second Quarter 2014 <sup>1</sup>

Nationality	TOTAL			Samoa Citizen			Temporary Residents			Visitors			Other Citizens			
	TOTAL	Male	Female	Total	Male	Female	Total	Male	Female	Total	Male	Female	Total	Male	Female	
<b>TOTAL</b>	<b>41,676</b>	<b>% <sup>2</sup></b>	<b>22,459</b>	<b>19,217</b>	<b>13,442</b>	<b>7,538</b>	<b>5,904</b>	<b>793</b>	<b>435</b>	<b>358</b>	<b>26,909</b>	<b>14,163</b>	<b>12,746</b>	<b>532</b>	<b>323</b>	<b>209</b>
Samoa	13,740	33.0	7,673	6,067	12,699	7,134	5,565	124	66	58	871	452	419	46	21	25
American Samoa	1,238	3.0	699	539	64	38	26	16	10	6	1,140	638	502	18	13	5
Fiji	746	1.8	466	280	19	12	7	94	60	34	584	362	222	49	32	17
Cook Island	30	0.1	18	12	1	1	0	4	4	0	23	12	11	2	1	1
Other Pacific Is	888	2.1	559	329	17	11	6	41	23	18	783	495	288	47	30	17
New Zealand	13,576	32.6	6,796	6,780	372	209	163	193	97	96	12,857	6,413	6,444	154	77	77
Australia	4,719	11.3	2,473	2,246	82	36	46	102	57	45	4,496	2,358	2,138	39	22	17
United Kingdom	291	0.7	177	114	7	2	5	12	10	2	272	165	107	0	0	0
Scandinavia	71	0.2	35	36	8	2	6	2	1	1	59	31	28	2	1	1
Benelux	48	0.1	25	23	7	4	3	4	1	3	36	19	17	1	1	0
Germany	455	1.1	234	221	17	8	9	10	2	8	427	223	204	1	1	0
Other Europe	1,219	2.9	658	561	7	2	5	16	6	10	1,185	640	545	11	10	1
United States	2,887	6.9	1,475	1,412	95	50	45	105	58	47	2,622	1,331	1,291	65	36	29
Canada	125	0.3	67	58	1	1	0	10	6	4	113	59	54	1	1	0
Japan	178	0.4	118	60	7	2	5	30	17	13	141	99	42	0	0	0
China	543	1.3	376	167	6	5	1	8	6	2	490	334	156	39	31	8
Other Asia	234	0.6	146	88	4	4	0	7	3	4	217	134	83	6	5	1
Others	549	1.3	384	165	4	3	1	9	6	3	485	334	151	51	41	10
Korea	38	0.1	22	16	1	1	0	0	0	0	37	21	16	0	0	0
Not Stated	101	0.2	58	43	24	13	11	6	2	4	71	43	28	0	0	0
<b>% Distribution <sup>2</sup></b>	<b>100.0</b>		<b>53.9</b>	<b>46.1</b>	<b>32.3</b>	<b>18.1</b>	<b>26.3</b>	<b>1.9</b>	<b>1.0</b>	<b>0.9</b>	<b>64.6</b>	<b>34.0</b>	<b>30.6</b>	<b>1.3</b>	<b>0.8</b>	<b>0.5</b>

**Source:** Ministry of the Prime Minister and Cabinet - Immigration Division, Ministry for Revenue - Customs Division and Samoa Bureau of Statistics.

1: Provisional figures

2: Figures are subject to rounding errors

Table 8: Departures by Purpose of Travel and Gender (Samoa-citizen-only), Second Quarter 2014 <sup>1</sup>

Purpose of Travel	Samoa Citizen			
	TOTAL	% <sup>2</sup>	Male	Female
<b>TOTAL</b>	<b>13,442</b>		<b>7,538</b>	<b>5,904</b>
Holiday Vacation	<b>1,602</b>	<b>11.9</b>	899	703
Visit Friends/ Relatives	<b>9,301</b>	<b>69.2</b>	5,055	4,246
Business/Conference	<b>623</b>	<b>4.6</b>	391	232
Sporting/Activities	<b>315</b>	<b>2.3</b>	271	44
Others	<b>467</b>	<b>3.5</b>	269	198
Not Stated	<b>1,134</b>	<b>8.4</b>	653	481
<b>% Distribution <sup>2</sup></b>	<b>100</b>		<b>56.1</b>	<b>43.9</b>

**Source:** Ministry of the Prime Minister and Cabinet - Immigration Division,  
Ministry for Revenue - Customs Division and Samoa Bureau of Statistics.

1: Provisional figures

2: Figures are subject to rounding errors

Table 9: Departures by Place of Stay Abroad and Gender (Samoa-citizen-only), Second Quarter 2014 <sup>1</sup>

Place of Stay Abroad	TOTAL		Gender	
			Male	Female
<b>TOTAL</b>	<b>13,442</b>	<b>% <sup>2</sup></b>	<b>7,538</b>	<b>5,904</b>
American Samoa	<b>1,501</b>	<b>11.2</b>	900	601
Fiji	<b>114</b>	<b>0.8</b>	54	60
Cook Island	<b>4</b>	<b>0.0</b>	3	1
Other Pacific Is	<b>73</b>	<b>0.5</b>	46	27
New Zealand	<b>8,913</b>	<b>66.3</b>	4,842	4,071
Australia	<b>270</b>	<b>2.0</b>	142	128
United Kingdom	<b>8</b>	<b>0.1</b>	3	5
Scandinavia	<b>13</b>	<b>0.1</b>	6	7
Benelux	<b>2</b>	<b>0.0</b>	1	1
Germany	<b>4</b>	<b>0.0</b>	3	1
Other Europe	<b>10</b>	<b>0.1</b>	3	7
United States	<b>128</b>	<b>1.0</b>	75	53
Canada	<b>2</b>	<b>0.0</b>	0	2
Japan	<b>12</b>	<b>0.1</b>	7	5
Other Asia	<b>27</b>	<b>0.2</b>	13	14
Others	<b>16</b>	<b>0.1</b>	9	7
China	<b>13</b>	<b>0.1</b>	8	5
Korea	<b>1</b>	<b>0.0</b>	1	0
Not Stated	<b>2,331</b>	<b>17.3</b>	1,422	909

**Source:** Ministry of the Prime Minister and Cabinet - Immigration Division, Ministry of Revenue - Customs Division and Samoa Bureau of Statistics.

1: Provisional figures

2: Figures are subject to rounding errors

Table 10: Departures by Occupation, Education and Gender, Second Quarter 2014<sup>1</sup>

OCCUPATION	TOTAL			Primary			Secondary			Tertiary			Kindy & None			Not Stated			
	TOTAL	Male	Female	Total	Male	Female	Total	Male	Female	Total	Male	Female	Total	Male	Female	Total	Male	Female	
<b>TOTAL</b>	<b>41,676</b>	<b>%<sup>2</sup></b>	<b>22,459</b>	<b>19,217</b>	<b>10,703</b>	<b>5,880</b>	<b>4,823</b>	<b>12,321</b>	<b>6,789</b>	<b>5,532</b>	<b>16,063</b>	<b>8,502</b>	<b>7,561</b>	<b>1,323</b>	<b>655</b>	<b>668</b>	<b>1,266</b>	<b>633</b>	<b>633</b>
Army Airforce	40	<b>0.1</b>	24	16	3	1	2	11	6	5	23	14	9	0	0	0	3	3	0
Senior Official	3,827	<b>9.2</b>	2,388	1,439	643	417	226	789	468	321	2,304	1,451	853	1	1	0	90	51	39
Professional	6,054	<b>14.5</b>	3,051	3,003	853	427	426	994	555	439	4,005	1,975	2,030	1	1	0	201	93	108
Technician	4,455	<b>10.7</b>	2,283	2,172	794	434	360	973	480	493	2,614	1,328	1,286	0	0	0	74	41	33
Clerical	619	<b>1.5</b>	266	353	125	53	72	235	102	133	248	107	141	0	0	0	11	4	7
Services workers	1,979	<b>4.7</b>	829	1,150	379	168	211	781	309	472	763	330	433	0	0	0	56	22	34
Agricultural work	1,090	<b>2.6</b>	992	98	295	277	18	529	480	49	241	211	30	0	0	0	25	24	1
Craft/tradework	619	<b>1.5</b>	521	98	112	97	15	310	261	49	161	134	27	0	0	0	36	29	7
Plant/machinery	2,726	<b>6.5</b>	2,207	519	668	532	136	1,116	918	198	907	727	180	0	0	0	35	30	5
Labours	988	<b>2.4</b>	429	559	211	114	97	433	190	243	270	108	162	1	0	1	73	17	56
Students	4,334	<b>10.4</b>	2,065	2,269	1,707	844	863	1,267	628	639	1,098	452	646	136	69	67	126	72	54
Infant/retired	2,643	<b>6.3</b>	1,384	1,259	702	379	323	732	394	338	653	357	296	341	159	182	215	95	120
Unemployed	645	<b>1.5</b>	365	280	73	45	28	442	250	192	127	69	58	0	0	0	3	1	2
Not Stated	11,657	<b>28.0</b>	5,655	6,002	4,138	2,092	2,046	3,709	1,748	1,961	2,649	1,239	1,410	843	425	418	318	151	167

**Source:** Ministry of the Prime Minister and Cabinet - Immigration Division, Ministry for Revenue - Customs Division and Samoa Bureau of Statistics

1: Provisional figures