



Please address all correspondence to the Government Statistician  
In reply, please quote the file reference

File Ref: IAS 08/14

# GOVERNMENT OF SAMOA SAMOA BUREAU OF STATISTICS

## International Arrival Statistics August 2014

### HIGHLIGHTS OF THE MONTH

In August 2014 compared with August 2013

- ❖ Total arrivals (15,888) increased by 9.0 percent
- ❖ Total visitors (13,040) increased by 12.9 percent
- ❖ More visitors arrived from USA (up by 540) and Australia (up by 120) but few arrived from American Samoa (down by 330) and New Zealand (down by 80).

August 2014	Number	Change from previous month	Change from previous year
All Arrivals	15,888	-2.2%	9.0%
All Visitors	13,040	-1.1%	12.9%

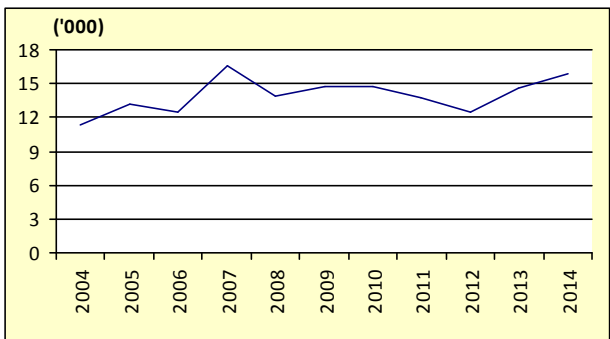
### OVERVIEW

#### 1. TOTAL ARRIVALS

The total International Arrival Statistics recorded for the month of **August 2014** (table 1), revealed a decrease of 2.2 percent over the previous month of July but an increase of 9.0 percent over the corresponding month of August 2013. (Refer Fig. 1)

Air was the preferred mode of travel to Samoa, representing 96.2 percent (15,285) of total arrivals, while the remaining 3.8 percent (603) arrived by sea in August 2014.

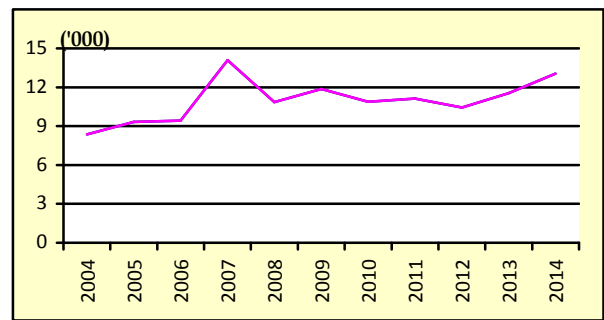
Fig. 1: August Total Arrivals, 2004 - 2014



#### 2. TOTAL VISITORS

Overall Visitors numbered 13,040 for the month under review revealed a decrease of 1.1 percent over the previous month but an increase of 12.9 percent when compared to the corresponding month of August 2013. (Refer Fig. 2).

Fig. 2: August Total Visitors, 2004 - 2014



Visitors' arrivals have a strong seasonal pattern with a regular peak of numbers during holiday seasons normally from December to January. Graph 2 in the Appendix shows the smooth-term trend for visitors for arrivals adjusting for seasonal pattern except for the additive outliers for May and June 2012 during Samoa's 50<sup>th</sup> Anniversary.

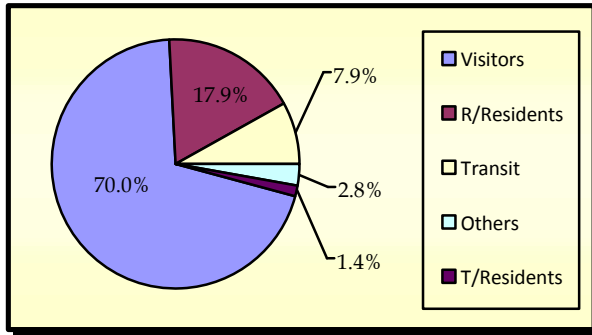
#### 3. TOTAL ARRIVALS BY PURPOSE OF ENTRY

Visitors, including transit made up the largest component of all arrivals with 41.9 percent (6,661) being males and 36.0 percent (5,713) being females.

Returning residents made up 17.9 percent (2,848) of arrivals with 10.2 percent (1,619) being males and 7.7 percent (1,229) being females.

Additionally, temporary residents made up 1.4 percent (218) of total arrivals with 0.8 percent (135) being males and 0.9 percent (85) being females. Other purposes of entry made up the remainder of the total arrivals with 2.8 percent (448). (Refer Fig.3)

**Fig. 3: Total Arrivals, by Purpose of Visit**

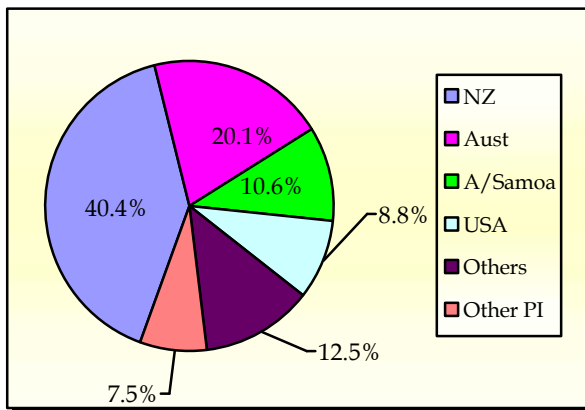


**4. VISITORS BY COUNTRY OF USUAL RESIDENCE**

New Zealand remains as the leading country in visitors' arrival by country of usual residence (Table 3) accounting for 40.4 percent or 5,272 of total visitors, compared to 45.0 percent or 5,928 visitors reported in the previous month. Australia followed next with a 20.1 percent share (2,626) compared to 19.6 percent or 2,587 visitors reported in the previous month.

American Samoa represented 10.6 percent (1,388) in August 2014 compared to 17.4 percent or 2,293 visitors in the previous month and the United States of America remains the smallest of the principal source markets with a share of 8.8 percent (1,153) compared to 7.1 percent share or 933 visitors which was reported in the previous month. (Refer Fig. 4)

**Fig. 4: Total Visitors, by Country of Usual Residence**

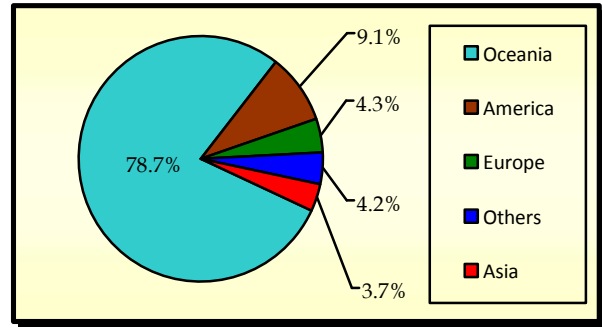


**5. VISITORS BY REGION**

The Oceanic Region had the highest share of total visitors with 78.7 percent compared to 86.3 percent reported in August 2013, followed by America with 9.1 percent (5.5 percent in August 2013).

Europe represented 4.3 percent of total visitors compared with 3.2 percent reported in the previous year, while Asia represented the lowest share with 3.7 percent compared to 3.1 percent reported in August 2013. (Refer Fig. 5).

**Fig. 5: Total Visitors, by Region**



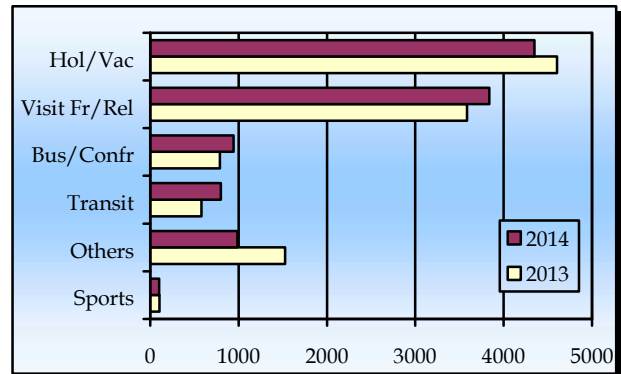
**6. VISITORS BY PURPOSE OF VISIT**

The principal source markets (table 4) namely New Zealand, American Samoa, Australia, and the United States of America constituted 79.9 percent of all visitors visiting Samoa in August 2014.

The majority of visitors (33.3 percent) were here on Holiday/ Vacation followed by those that came here to visit friends and relatives with 29.4 percent.

Visitors that entered our shores for Business/ Conference and those that were here on Transit reported 19.3 percent and 9.6 percent respectively. Fig.6 depicts total visitors by purpose of visit for August 2013 and August 2014.

**Fig. 6: Total Visitors, by Purpose of Visit**

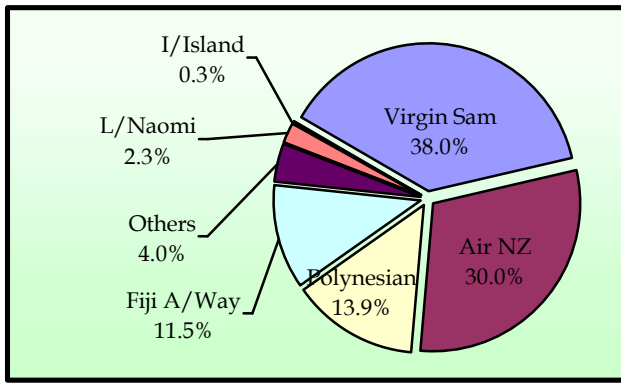


**7. TOTAL ARRIVALS BY CARRIER**

As depicted in table 5, Virgin Samoa, formerly known as Polynesian Blue, leads the way of arrival by carriers' during the reference period with a 38.0 percent share (6,033 passengers) followed by Air New Zealand with a share of 30.0 percent (4,772 passengers).

Polynesian Airlines brought in 13.9 percent (2,215) of total arrivals while Fiji Air Ways, formerly known as Air Pacific, recorded a share of 11.5 percent (1,824). Fig. 7 illustrates total arrivals by carrier during the reference period.

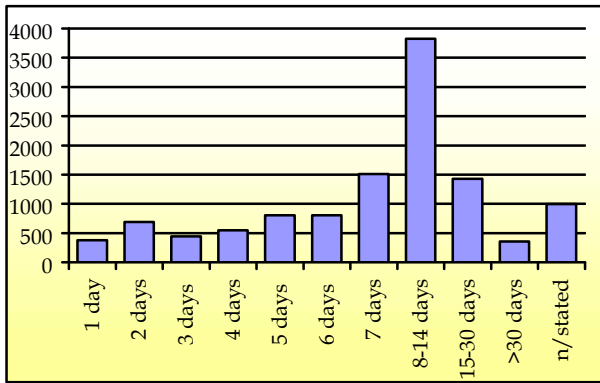
**Fig. 7: Total Arrivals by Carrier**



**8. VISITORS DURATION AND PLACE OF STAY**

The usual visitor's (excluding transit) duration of stay in Samoa (Table 6) is between seven and thirty days, as shown in Fig. 8.

**Fig. 8: Total Visitors by Duration of Stay**



Most visitors (52.1 percent or 6,143 visitors) reported staying in private accommodation or with families/ relatives while 44.3 percent (5,224) stayed in hotels/ motels. The remaining 3.5 percent or 416 visitors did not state their place of stay. (Refer Fig. 9).

**Fig. 9: Total Visitors by Place of Stay**

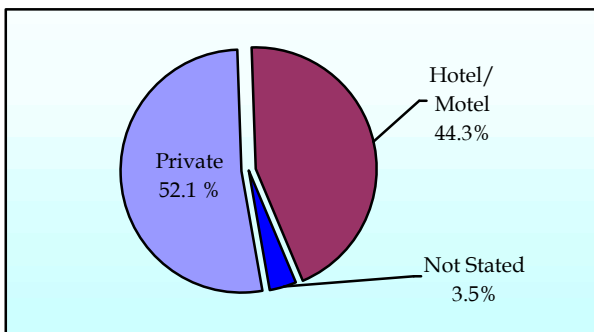
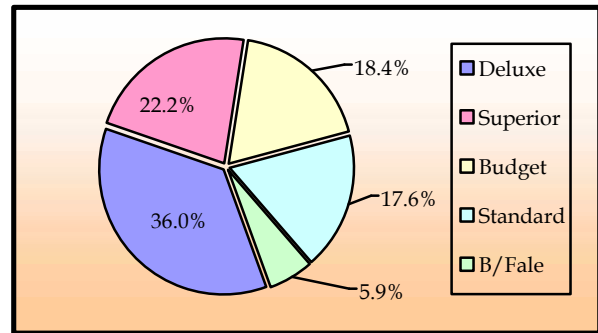


Fig. 10 portrays the number of visitors who stayed in hotels/ motels (5,224) by type of accommodation (hotel/ motel), within the reference month.

**Fig. 10: Visitors Staying in Hotels/ Motels by Type of Accommodation**



Detailed information for the reference period is attached in Tables 1 – 6 and the appendix shows longer time series.

**BACKGROUND**

The sourced documents for the compilation of International Arrival Statistics are the immigration arrival and departure card forms.

These forms are completed by all incoming and outgoing travelers at the three local points of entry namely (1) Apia wharf (2) Faleolo and (3) Fagalii international airports.

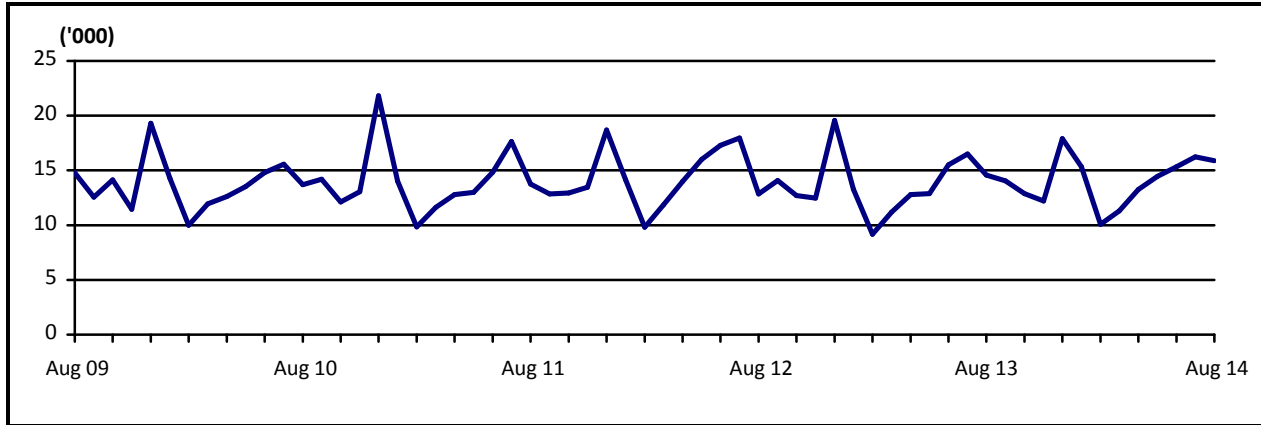
International arrival statistics are compiled on a monthly, quarterly and annual basis. These reports can also be extracted from our website: [www.sbs.gov.ws](http://www.sbs.gov.ws)

**The migration report for the month of September 2014 will be released on the 31<sup>st</sup> October 2014.**

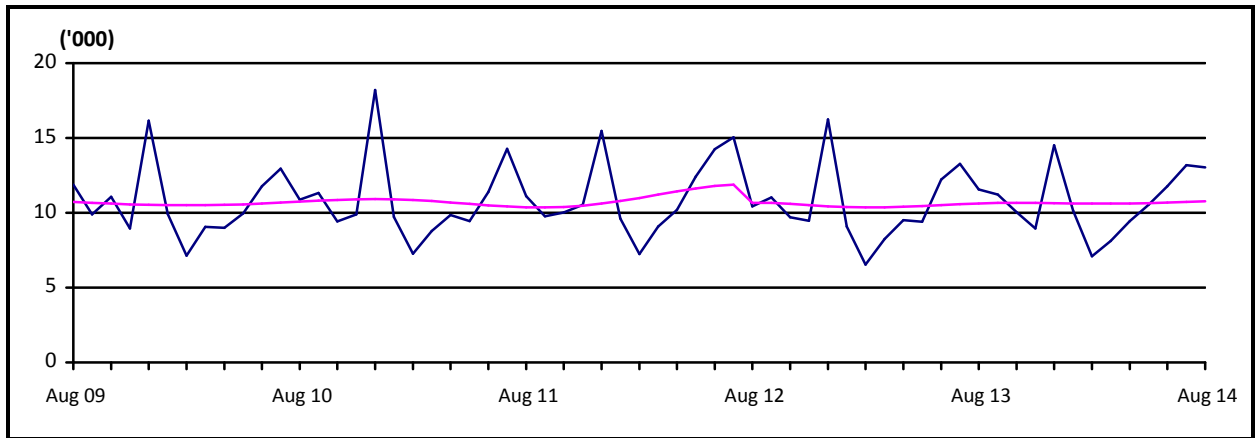
**Muagututi'a Sefuiva Reupena  
GOVERNMENT STATISTICIAN**

**APPENDIX**

Graph 1: Monthly Total Arrivals, August 2009 – August 2014



Graph 2: Monthly Total Visitors, August 2009 – August 2014



Graph 3: Visitors Percentage Change over Previous month, August 2009 – August 2014

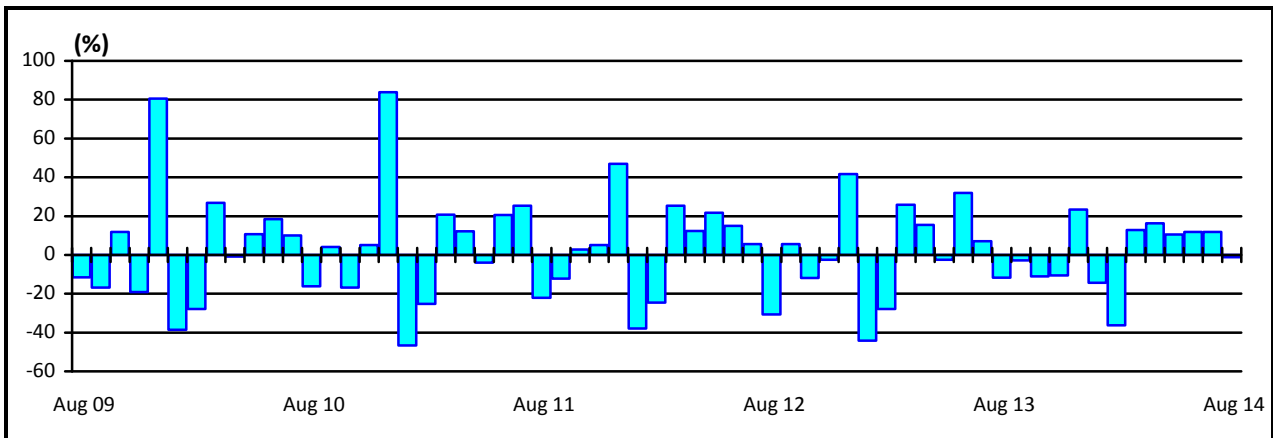


Table 1: Monthly Arrival and Departure by Mode of Travel and Net Migration, 2004 - 2014.

Period	Visitors Arrivals			Total Arrivals			Total Departures			Net Migration
	Air	Sea	Total	Air	Sea	Total	Air	Sea	Total	
<b>2004</b>	93,946	4,209	<b>98,155</b>	129,517	11,864	<b>141,381</b>	131,277	12,303	<b>143,580</b>	<b>-2,199</b>
<b>2005</b>	98,544	3,263	<b>101,807</b>	132,200	10,557	<b>142,757</b>	135,008	10,936	<b>145,944</b>	<b>-3,187</b>
<b>2006</b>	112,411	3,471	<b>115,882</b>	147,807	9,349	<b>157,156</b>	147,991	9,489	<b>157,480</b>	<b>-324</b>
<b>2007</b>	118,653	3,703	<b>122,356</b>	150,584	7,635	<b>158,219</b>	158,099	8,578	<b>166,677</b>	<b>-8,458</b>
<b>2008</b>	118,459	3,743	<b>122,202</b>	151,883	8,628	<b>160,511</b>	161,482	9,908	<b>171,390</b>	<b>-10,879</b>
<b>2009</b>	127,327	1,978	<b>129,305</b>	161,816	5,095	<b>166,911</b>	156,319	6,069	<b>162,388</b>	<b>4,523</b>
<b>2010</b>	126,970	2,530	<b>129,500</b>	162,052	5,539	<b>167,591</b>	164,426	6,326	<b>170,752</b>	<b>-3,161</b>
<b>2011</b>	124,706	2,898	<b>127,604</b>	159,660	5,738	<b>165,398</b>	163,605	6,216	<b>169,821</b>	<b>-4,423</b>
<b>2012</b>	131,945	2,749	<b>134,694</b>	167,211	5,509	<b>172,720</b>	167,842	6,297	<b>174,139</b>	<b>-1,419</b>
<b>2013</b>	122,171	2,502	<b>124,673</b>	157,542	5,335	<b>162,877</b>	162,333	5,885	<b>168,218</b>	<b>-5,341</b>
<b>2014</b>	<b>81,369</b>	<b>2,041</b>	<b>83,410</b>	<b>107,068</b>	<b>4,833</b>	<b>111,901</b>	<b>52,947</b>	<b>2,582</b>	<b>55,529</b>	...
<b>2011</b>										
July	14,009	260	14,269	17,124	525	17,649	17,000	374	17,374	<b>275</b>
August	10,899	219	11,118	13,383	372	13,755	14,332	638	14,970	<b>-1,215</b>
September	9,570	187	9,757	12,382	458	12,840	12,452	504	12,956	<b>-116</b>
October	9,868	150	10,018	12,646	298	12,944	13,028	353	13,381	<b>-437</b>
November	10,224	302	10,526	12,946	508	13,454	11,918	566	12,484	<b>970</b>
December	15,072	396	15,468	17,961	738	18,699	14,437	535	14,972	<b>3,727</b>
<b>2012</b>										
January	9,480	133	9,613	13,878	267	14,145	18,055	554	18,609	<b>-4,464</b>
February	7,033	212	7,245	9,453	369	9,822	12,300	449	12,749	<b>-2,927</b>
March	8,926	152	9,078	11,504	359	11,863	11,034	374	11,408	<b>455</b>
April	10,095	104	10,199	13,157	820	13,977	12,989	1,012	14,001	<b>-24</b>
May	11,908	502	12,410	15,264	730	15,994	11,514	485	11,999	<b>3,995</b>
June	13,883	379	14,262	16,747	535	17,282	16,316	849	17,165	<b>117</b>
July	14,913	135	15,048	17,705	261	17,966	18,995	319	19,314	<b>-1,348</b>
August	10,228	205	10,433	12,509	334	12,843	13,921	453	14,374	<b>-1,531</b>
September	10,749	267	11,016	13,653	422	14,075	13,743	329	14,072	<b>3</b>
October	9,604	97	9,701	12,378	330	12,708	13,764	460	14,224	<b>-1,516</b>
November	9,190	266	9,456	11,943	539	12,482	11,369	395	11,764	<b>718</b>
December	15,936	297	16,233	19,020	543	19,563	13,842	618	14,460	<b>5,103</b>
<b>2013</b>										
January	8,821	259	9,080	12,952	334	13,286	16,397	649	17,046	<b>-3,760</b>
February	6,386	161	6,547	8,756	407	9,163	12,210	515	12,725	<b>-3,562</b>
March	8,086	160	8,246	10,776	399	11,175	9,612	438	10,050	<b>1,125</b>
April	9,351	165	9,516	12,325	453	12,778	12,576	653	13,229	<b>-451</b>
May	9,216	190	9,406	12,496	375	12,871	11,492	606	12,098	<b>773</b>
June	12,027	296	12,323	14,964	537	15,501	13,660	460	14,120	<b>1,381</b>
July	13,067	207	13,274	15,901	593	16,494	16,442	464	16,906	<b>-412</b>
August	11,380	175	11,555	14,046	535	14,581	15,063	536	15,599	<b>-1,018</b>
September	11,016	211	11,227	13,741	293	14,034	13,844	349	14,193	<b>-159</b>
October	9,828	207	10,035	12,512	361	12,873	14,773	158	14,931	<b>-2,058</b>
November	8,768	189	8,957	11,753	453	12,206	12,082	553	12,635	<b>-429</b>
December	14,225	282	14,507	17,320	595	17,915	14,182	504	14,686	<b>3,229</b>
<b>2014</b>										
January	9,879	256	10,135	14,755	578	15,333	<b>17,840</b>	<b>570</b>	<b>18,410</b>	<b>-3,077</b>
February	7,030	177	7,207	9,693	390	10,083	<b>12,211</b>	<b>460</b>	<b>12,671</b>	<b>-2,588</b>
March	8,002	118	8,120	10,853	447	11,300	<b>11,091</b>	<b>598</b>	<b>11,689</b>	<b>-369</b>
April	9,301	146	9,447	12,454	812	13,266	<b>11,805</b>	<b>954</b>	<b>12,759</b>	<b>507</b>
May	10,225	272	10,497	13,876	578	14,454	...	...	...	...
June	11,475	309	11,784	14,645	682	15,327	...	...	...	...
July	12,743	437	13,180	15,507	743	16,250	...	...	...	...
<b>August /1</b>	<b>12,714</b>	<b>326</b>	<b>13,040</b>	<b>15,285</b>	<b>603</b>	<b>15,888</b>	...	...	...	...

**Source :** Ministry of the Prime Minister and Cabinet- Immigration Division; Ministry for Revenue- Customs Division and Samoa Bureau of Statistics.

1: Provisional figures

... Denote not yet available

Table 2: Total Arrivals by Age, Purpose of Entry and Gender, August 2014 <sup>1</sup>

Age	Purpose of Entry																	
	Total			Visitors			Returning Residents			Transit			Temporary Residents			Others		
	Total	Male	Female	Total	Male	Female	Total	Male	Female	Total	Male	Female	Total	Male	Female	Total	Male	Female
<b>Total</b>	<b>15,888</b>	<b>8,677</b>	<b>7,211</b>	<b>11,117</b>	<b>5,797</b>	<b>5,320</b>	<b>2,848</b>	<b>1,619</b>	<b>1,229</b>	<b>1,257</b>	<b>864</b>	<b>393</b>	<b>218</b>	<b>135</b>	<b>83</b>	<b>448</b>	<b>262</b>	<b>186</b>
0 - 4	682	345	337	503	245	258	126	71	55	37	20	17	7	3	4	9	6	3
5 - 9	517	254	263	407	203	204	63	29	34	38	16	22	3	3	0	6	3	3
10 - 14	431	198	233	287	135	152	66	28	38	65	28	37	4	1	3	9	6	3
15 - 19	540	242	298	393	163	230	78	39	39	47	23	24	15	13	2	7	4	3
20 - 24	1,169	562	607	755	298	457	234	134	100	131	112	19	24	12	12	25	6	19
25 - 29	1,359	704	655	926	416	510	214	131	83	166	128	38	16	7	9	37	22	15
30 - 34	1,421	775	646	1,024	530	494	231	133	98	125	87	38	14	7	7	27	18	9
35 - 39	1,367	768	599	912	474	438	261	164	97	123	89	34	28	17	11	43	24	19
40 - 44	1,466	859	607	1,036	591	445	271	162	109	91	65	26	17	10	7	51	31	20
45 - 49	1,532	882	650	1,061	591	470	296	170	126	107	76	31	23	19	4	45	26	19
50 - 54	1,577	878	699	1,103	597	506	272	147	125	110	75	35	15	11	4	77	48	29
55 - 59	1,459	849	610	1,041	596	445	251	143	108	94	67	27	18	10	8	55	33	22
60 - 64	1,062	610	452	755	427	328	197	115	82	63	35	28	16	10	6	31	23	8
65 - 69	682	398	284	485	278	207	140	80	60	33	26	7	13	8	5	11	6	5
70 - 74	358	202	156	252	153	99	83	38	45	13	8	5	1	1	0	9	2	7
75 +	266	151	115	177	100	77	65	35	30	14	9	5	4	3	1	6	4	2
<b>% Distribution</b>	<b>100</b>	<b>54.6</b>	<b>45.4</b>	<b>70.0</b>	<b>36.5</b>	<b>33.5</b>	<b>17.9</b>	<b>10.2</b>	<b>7.7</b>	<b>7.9</b>	<b>5.4</b>	<b>2.5</b>	<b>1.4</b>	<b>0.8</b>	<b>0.5</b>	<b>2.8</b>	<b>1.6</b>	<b>1.2</b>

**Source:** Ministry of the Prime Minister and Cabinet - Immigration Division; Ministry for Revenue - Customs Division and Samoa Bureau of Statistics.

1: Provisional figures

2: Figures are subject to rounding errors

**Note:** The Purpose of Entry categories of Temporary Residents and Others were introduced as a result of the introduction of the new arrival card

Table 3: Total Visitors Arrivals by Country of Usual Residents and Mode of Travel, August 2014 <sup>1</sup>

Country of Usual Residence	Mode of Travel			Percentage (%) <sup>2</sup>
	Air	Sea	Total	
<b>OCEANIA</b>	<b>10,067</b>	<b>190</b>	<b>10,257</b>	<b>78.7</b>
American Samoa	1311	77	1,388	10.6
Fiji	384	1	385	3.0
Cook Island	29	1	30	0.2
Other Pacific Is	493	63	556	4.3
New Zealand	5241	31	5,272	40.4
Australia	2609	17	2,626	20.1
<b>EUROPE</b>	<b>505</b>	<b>62</b>	<b>567</b>	<b>4.3</b>
United Kingdom	73	22	95	0.7
Scandinavia	31	1	32	0.2
Benelux	27	3	30	0.2
Germany	182	5	187	1.4
Other Europe	192	31	223	1.7
<b>AMERICA</b>	<b>1,137</b>	<b>54</b>	<b>1,191</b>	<b>9.1</b>
U.S.A	1,102	51	1,153	9
Canada	35	3	38	0.3
<b>ASIA</b>	<b>470</b>	<b>13</b>	<b>483</b>	<b>3.7</b>
Japan	90	1	91	0.7
China	189	1	190	1.5
Korea	7	0	7	0.1
Other Asia	184	11	195	1.5
<b>OTHERS</b>	<b>535</b>	<b>7</b>	<b>542</b>	<b>4.2</b>
<b>TOTAL</b>	<b>12,714</b>	<b>326</b>	<b>13,040</b>	<b>100%</b>
<b>PERCENTAGE DISTRIBUTION</b>	<b>97.5</b>	<b>1.5%</b>	<b>100%</b>	

**Source:** Ministry of the Prime Minister and Cabinet- Immigration Division; Ministry for Revenue- Customs Division and Samoa Bureau of Statistics.

1: Provisional figures.

2: Figures are subject to rounding errors

**Note:** (i) Visitors refer to all person visiting Samoa other than returning residents and also expatriates who are employed and living in Samoa (**include transit**).

(ii) Visitors also include Samoan citizens whose country of usual residence are country abroad.

(iii) **Scandinavia**- refers to countries of Norway, Sweden, Finland and Denmark.

(iv) **Benelux:** - refers to countries of Belgium, Netherlands and Luxembourg.

(v) **Exclude Cruise Liner Passengers.**



Table 4: Total Visitors by Usual Residence and Purpose of Visit, August 2014 <sup>1</sup>

Usual Residence	Purpose of Visit								
	Total	Percentage <sup>2</sup>	Holiday/ Vacation	Business/ Conference	Visit Friends/ Relatives	Sports	Transit	Others	Not Stated
<b>OCEANIA</b>	<b>10,257</b>	<b>78.7</b>	<b>3,650</b>	<b>1,487</b>	<b>3,450</b>	<b>96</b>	<b>808</b>	<b>361</b>	<b>405</b>
American Samoa	1,388	10.6	214	84	516	3	331	50	190
Fiji	385	3.0	52	191	45	10	40	27	20
Cook Island	30	0.2	3	18	3	0	3	0	3
Other Pacific Is	556	4.3	29	251	67	31	120	38	20
New Zealand	5,272	40.4	2,280	704	1,728	38	227	175	120
Australia	2,626	20.1	1,072	239	1,091	14	87	71	52
<b>EUROPE</b>	<b>567</b>	<b>4.3</b>	<b>279</b>	<b>138</b>	<b>49</b>	<b>3</b>	<b>61</b>	<b>24</b>	<b>13</b>
United Kingdom	95	0.7	27	34	3	0	24	4	3
Scandinavia	32	0.2	18	11	2	0	1	0	0
Benelux	30	0.2	16	8	1	0	3	2	0
Germany	187	1.4	128	17	10	2	15	9	6
Other Europe	223	1.7	90	68	33	1	18	9	4
<b>AMERICA</b>	<b>1,191</b>	<b>9.1</b>	<b>237</b>	<b>453</b>	<b>244</b>	<b>0</b>	<b>160</b>	<b>62</b>	<b>35</b>
U.S.A.	1,153	8.8	226	442	235	0	154	61	35
Canada	38	0.3	11	11	9	0	6	1	0
<b>ASIA</b>	<b>483</b>	<b>3.7</b>	<b>74</b>	<b>137</b>	<b>61</b>	<b>1</b>	<b>169</b>	<b>19</b>	<b>22</b>
Japan	91	0.7	27	25	22	1	4	10	2
China	190	1.5	27	54	27	0	65	4	13
Korea	7	0.1	1	6	0	0	0	0	0
Other Asia	195	1.5	19	52	12	0	100	5	7
<b>OTHER COUNTRIES</b>	<b>542</b>	<b>4.2</b>	<b>108</b>	<b>296</b>	<b>34</b>	<b>0</b>	<b>59</b>	<b>36</b>	<b>9</b>
<b>TOTAL</b>	<b>13,040</b>	<b>100</b>	<b>4,348</b>	<b>2,511</b>	<b>3,838</b>	<b>100</b>	<b>1,257</b>	<b>502</b>	<b>484</b>
<b>Percentage Distribution <sup>2</sup></b>	<b>100</b>		<b>33.3</b>	<b>19.3</b>	<b>29.4</b>	<b>0.8</b>	<b>9.6</b>	<b>3.8</b>	<b>3.7</b>

**Source:** Ministry of the Prime Minister and Cabinet- Immigration Division; Ministry for Revenue- Customs Division and Samoa Bureau of Statistics.

**Note :** Sports was re-introduced again in the Purpose of Visit Category as of August 2008.

1: Provisional figures

2: Figures are subject to rounding errors

Table 5: Total Arrivals by Carrier and Purpose of Entry, August 2014 <sup>1</sup>

Carrier	Total	Purpose of Entry				
		Returning Residents	Percentage <sup>2</sup>	Visitors	Percentage <sup>2</sup>	
<b>Total</b>	<b>15,888</b>	<b>100%</b>	<b>2,848</b>	<b>17.9</b>	<b>13,040</b>	<b>82.1</b>
<b>AIR</b>						
Virgin Samoa <sup>3</sup>	<b>6,033</b>	<b>38.0</b>	993	6.3	5,040	31.7
Polynesian	<b>2,215</b>	<b>13.9</b>	601	3.8	1,614	10.2
Inter Island	<b>45</b>	<b>0.3</b>	9	0.1	36	0.2
Air New Zealand	<b>4,772</b>	<b>30.0</b>	629	4.0	4,143	26.1
Fiji Airways <sup>4</sup>	<b>1,824</b>	<b>11.5</b>	334	2.1	1,490	9.4
Other Air Carrier	<b>396</b>	<b>2.5</b>	5	0.0	391	2.5
<b>SEA</b>						
Lady Naomi	<b>360</b>	<b>2.3</b>	263	1.7	97	0.6
Yacht	<b>2</b>	<b>0.0</b>	0	0.0	2	0.0
Other Sea Carrier	<b>241</b>	<b>1.5</b>	14	0.1	227	1.4

**Source:** Ministry of the Prime Minister and Cabinet- Immigration Division; Ministry for Revenue-Customs Division and Samoa Bureau of Statistics.

**Note:** Total visitors include transit.

- 1: Provisional figures
- 2: Figures are subject to rounding errors
- 3: Polynesian Blue is now called Virgin Samoa
- 4: Air Pacific is now called Fiji Airways

Table 6: Visitors by Duration of Stay and Place of Stay, August 2014 <sup>1</sup>

Duration of Stay	Place of Stay			
	Total	Hotel/Motel	Private	Not Stated
<b>Total</b>	<b>11,783</b>	<b>5,224</b>	<b>6,143</b>	<b>416</b>
1day	378	123	243	12
2days	688	331	329	28
3days	444	217	210	17
4days	545	260	261	24
5days	806	434	327	45
6days	805	524	254	27
7days	1,509	898	559	52
8-14days	3,827	1,865	1,858	104
15-30days	1,429	318	1,082	29
31-60days	212	55	150	7
61-90days	78	12	63	3
91-180days	46	14	30	2
181-365days	21	6	12	3
Not Stated	995	167	765	63
<b>Percentage Distribution <sup>2</sup></b>	<b>100</b>	<b>44.3</b>	<b>52.1</b>	<b>3.5</b>

**Source:** Ministry of the Prime Minister and Cabinet- Immigration Division,  
Ministry for Revenue- Customs Division and Samoa Bureau of Statistics.

**Note:** Visitors here, exclude transit.

1: Provisional figures

2: Figures are subject to rounding errors