

Please address all correspondence to the Government Statistician
 In reply, please quote the file reference



File Ref: IAS Q1/14

GOVERNMENT OF SAMOA

SAMOA BUREAU OF STATISTICS

International Arrival Statistics FIRST QUARTER 2014

HIGHLIGHTS OF THE QUARTER

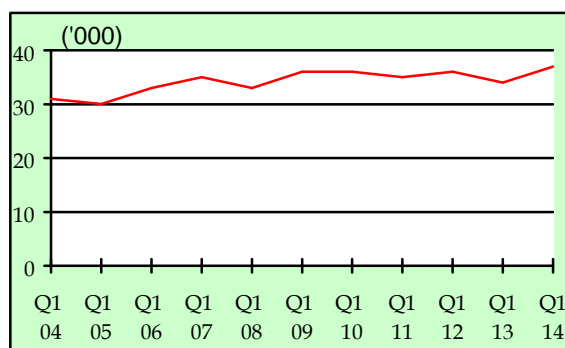
This quarter compared with first quarter 2013:

- Total arrivals (36,716) were up by 9 percent.
- Total visitors (25,462) were up by 7 percent.
- More visitors arrived from Australia (up by 327), New Zealand (up by 241), American Samoa (up by 86), and USA (up by 51).
- Samoa residents departed on more trips to New Zealand (up by 1,821) but fewer to American Samoa (down by 2,256), Australia (down 65) and USA (down by 29).
- Samoa residents departed on 14,100 trips, up by 12 percent.

| Q1 2014 | Number | Change from previous quarter | Change from previous year |
|--------------|--------|------------------------------|---------------------------|
| All Arrivals | 36,716 | -14.6% | 9.2% |
| All Visitors | 25,462 | -24.0% | 6.7% |

As usual, Air being the most preferred mode of travel to Samoa, accounting for 96.1 percent (35,301) of total arrivals, while those that arrived by Sea accounted for the remaining 3.9 percent (1,415).

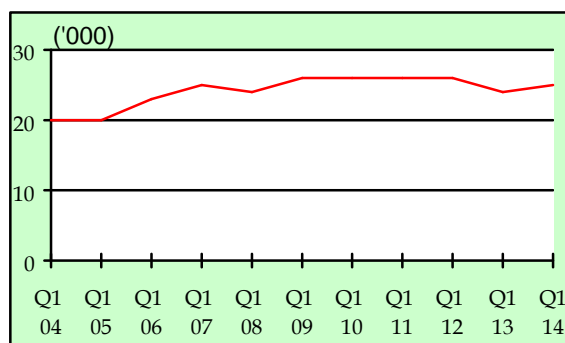
Fig. 1.1: 1st Quarter Total Arrivals, 2004 - 2014



1.2 TOTAL VISITORS

Total Visitors of 25,462 for the quarter under review reveals a decrease of 24.0 percent over the previous quarter, but an increase of 6.6 percent increase in comparison to the corresponding quarter of January – March 2013. (Refer Fig. 1.2).

Fig. 1.2: 1st Quarter Total Visitors, 2004 - 2014



OVERVIEW

1. ARRIVALS

1.1 TOTAL ARRIVALS

The total International Arrival Statistics documented during the reference period (table 1) reveals a decrease of 14.6 percent when compared to the previous quarter (October - December 2013) but an increase of 9.2 percent over the corresponding quarter of January – March 2013. (Refer Fig. 1.1).

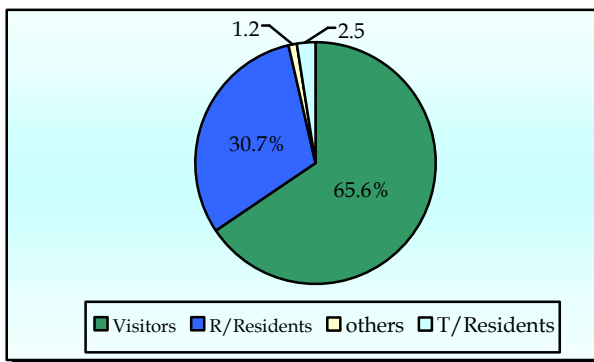
1.3 TOTAL ARRIVALS BY PURPOSE OF ENTRY

Visitors, including transit, made up the largest component of all arrivals with 34.8 percent (12,766) being males and 30.9 percent (11,331) being females.

Male and female returning residents made up 16.0 percent (5,879) and 14.6 (5,375) percent respectively of total arrivals. Temporary residents made up 1.4 percent (519) being males and 1.1 percent (411) being females. Other purposes of entry made up the remainder of 1.2 percent of total arrival. (Refer Fig. 1.3).

The majority of inbound travellers to Samoa during the reference period were aged between 20 years and 59 years.

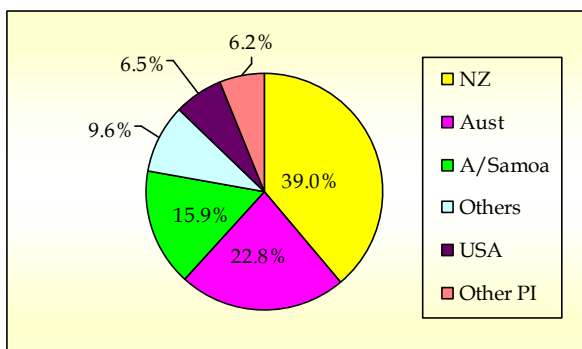
Fig. 1.3: Total Arrivals, by Purpose of Entry



1.4 VISITORS ARRIVALS BY COUNTRY OF USUAL RESIDENCE

New Zealand still remains as the leading country in visitors' arrival by country of usual residence (Table 3) accounting for 39.0 percent of total visitors with 9,927. Australia followed next with a distant 22.8 percent share (5,810) which is then trailed by American Samoa with 15.9 percent (4,049) while the United States of America anchored the principal source markets with a far-off share of 6.5 percent (1,654). (Refer Fig. 1.4).

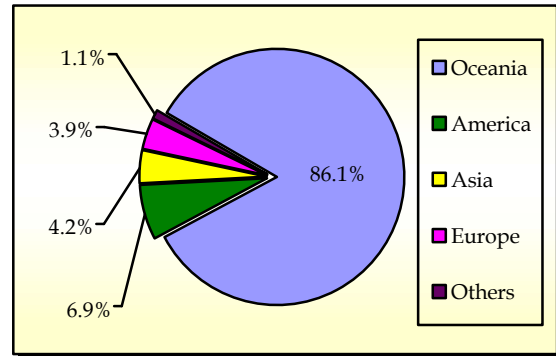
Fig. 1.4: Total Visitors, by Country of Usual Residence



1.5 VISITORS ARRIVALS BY REGION

The Oceanic region had the highest share of total visitors with 84.0 percent trailed by America and Asia with 6.9 percent and 4.2 percent respectively. The European region showed the lowest share with 3.9 percent. (Refer Fig. 1.5)

Fig 1.5: Total Visitors, by Region



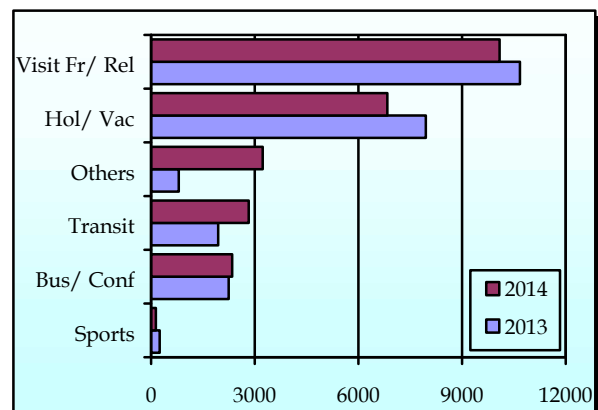
1.6 VISITORS BY PURPOSE OF VISIT

As illustrated in Table 4, New Zealand, Australia, American Samoa, and the United States of America constitute 84.2 percent of all visitors visiting Samoa while other countries round up the remaining 15.8 percent during the reference period.

Visitors that were here to visit friends/ relatives accounted for 39.6 percent of all visitors. 26.9 percent of all visitors entered for holiday/ vacation. Business and conference visitors made up 9.2 percent.

Transients bound for other destinations and those who were here for other purposes registered 11.1 and 4.2 percent respectively. Fig. 1.6 depicts total visitors by purpose of visit during the reference period compared to the first quarter of 2013.

Fig 1.6: Total Visitors, by Purpose of Visit



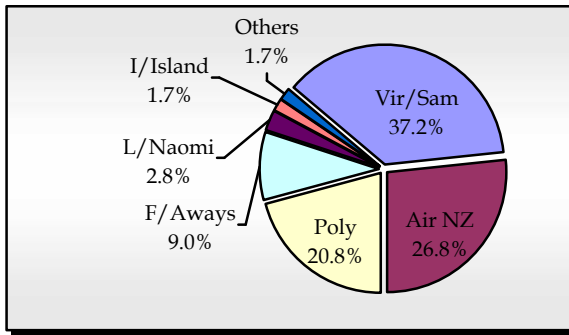
1.7 TOTAL VISITORS BY CARRIER

As tabulated in Table 5, Virgin Samoa (formerly known as Polynesian Blue) leads the way for arrivals by carriers' during the reference period with a 37.1 percent share (13,627 passengers) followed by Air New Zealand with a share of 26.7 percent (9,803 passengers).

Polynesian Airlines brought in 20.8 percent (7,647) of total arrivals while Fiji Airways (formerly known as Air Pacific) recorded a 9.0 percent share (3,298).

Fig. 1.7 illustrates total arrivals by carrier during the reference period.

Fig. 1.7: Total Arrivals, by Carrier



1.8 VISITORS DURATION AND PLACE OF STAY

The usual trend of visitor's duration of stay in Samoa (Table 6) is between 7 days and 30 days, as revealed in Fig 1.8.

69.7 percent (15,780) of total visitors reported staying in private accommodations or with families/relatives, while only 28.1 percent (6,652) stayed in hotels/ motels. The remaining 2.2 percent (504) did not reveal their place of stay during the reference period. (Refer Fig. 1.9).

Fig. 1.8: Total Visitors, by Duration of Stay

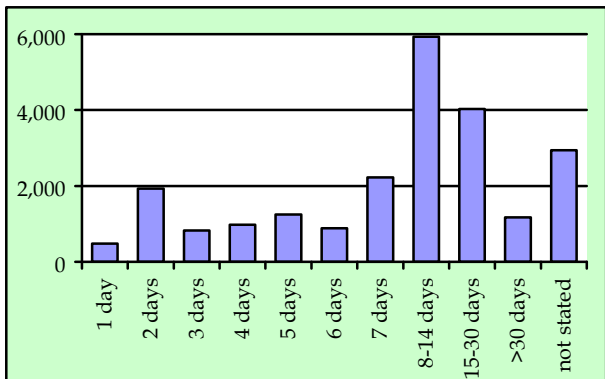
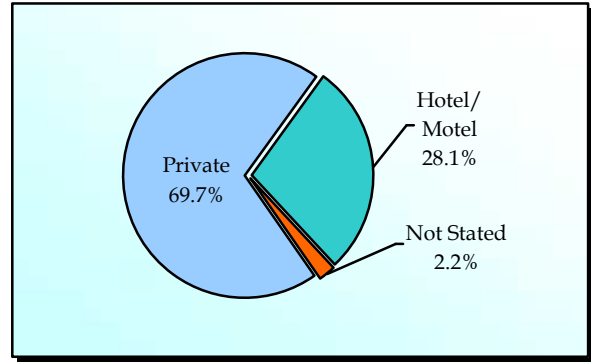


Fig. 1.9: Total Visitors, by Place of Stay



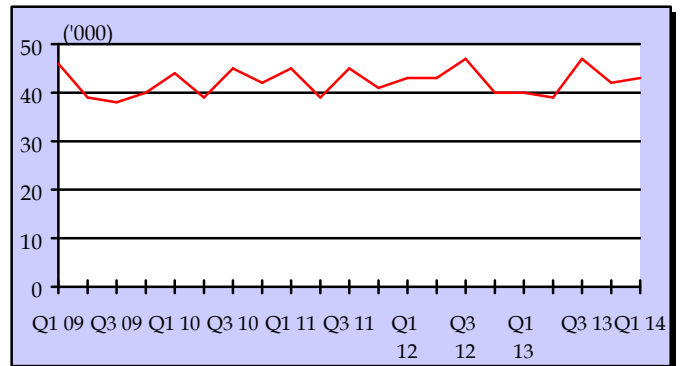
2. DEPARTURES

2.1 TOTAL DEPARTURES

The total International Departure Statistics recorded during the reference period (table 1) revealed an increase of 1.2 percent when compared to the previous quarter (October - December 2013) as well as an increase of 7.4 percent over the corresponding quarter of January - March 2013. (Refer Fig. 2.1).

Furthermore, Air was the most preferred mode of travel away from Samoa, accounting for 96.2 percent (41,142) of total departures, while those that departed by sea accounted for the remaining 3.8 percent (1,624).

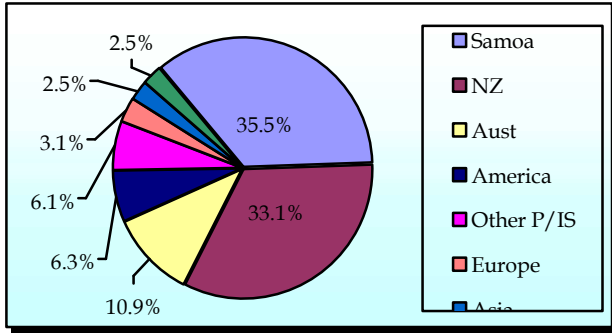
Fig. 2.1: Quarterly Total Departures, 2009 - 2014



2.2 TOTAL DEPARTURE BY NATIONALITY

Departures from Samoan, New Zealand, Australian, and the United States of American nationals (Table 7) accounted for 85.8 percent (36,702) of total departures. Fig. 2.2 provides a more detailed graphical analysis of total departure by nationality during the reference period.

Fig. 2.2: Total Departures, by Nationality



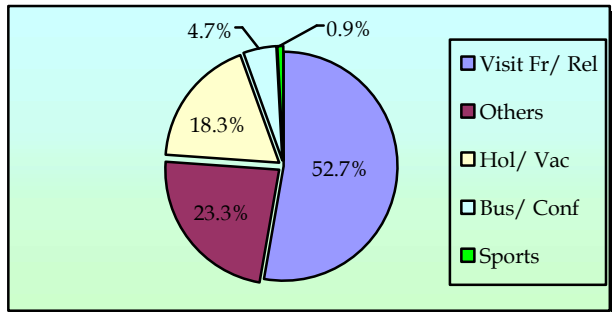
2.3 PURPOSE OF TRAVEL ABROAD

During the reference period, a total of 14,135 (Table 8) Samoa citizens left our shores on overseas trips. Of this total, 56.0 percent (7,919) were males and the remaining 44.0 percent (6,216) were females.

Visiting friends/ relatives abroad made up the largest component of all Samoa citizens travelling abroad accounting for 52.7 percent (7,449) followed by those that travelled overseas for Holiday/ Vacation with 18.3 percent (2,590).

Those that travelled for Business/ Conference reported 4.7 percent (669) while Sporting activities made up the remainder of departing Samoa citizens with only 0.9 percent (134). This is graphically illustrated in Fig. 2.3.

Fig. 2.3: Purpose of Travel Abroad



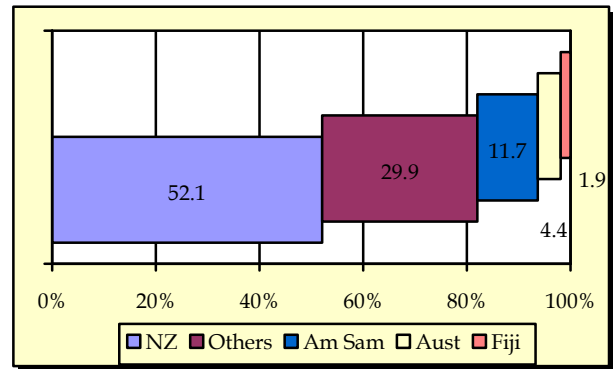
2.4 COUNTRY OF STAY ABROAD

The majority of Samoa citizens leaving our shores traveled to New Zealand as indicated by 52.1 percent (7,367) in Table 9 while 11.7 percent (1,660) of departing Samoa citizens traveled to American Samoa.

Australia made up 4.4 percent (616) while Fiji made up 1.9 percent (267) of Samoa citizens travelling to overseas countries.

Fig. 2.4 portrays a graphical impression of the country of stay abroad by Samoa Citizens during the reference period.

Fig. 2.4: Country of Stay Abroad



2.6 DEPARTURE BY OCCUPATION

As illustrated in Table 10, the majority of Samoa citizens departing our shores were Students with 15.0 percent (6,400) followed by professionals with 10.9 percent (4,661) then by technicians with 9.0 (3,850). A more comprehensive graphical analysis of departures by occupation for Samoa citizens is exhibited in Fig. 2.5.

Fig. 2.5: Departures by Occupation

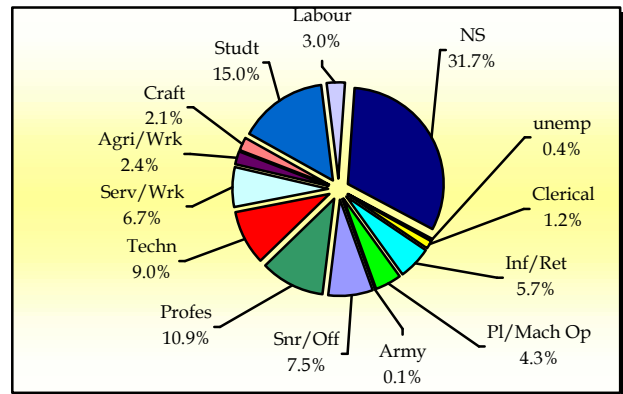
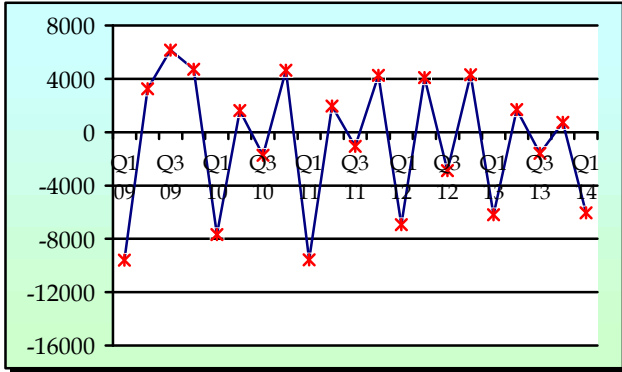


Table 10 further revealed that the majority of Samoa citizens departing our shores have either completed or are currently attending Tertiary Education level, yielding 33.6 percent.

3. NET MIGRATION

During the reference period, net migration stood at -6,054 (Table 1) implying that there were more outgoing (departures) than in-coming travelers (arrival). This shows a decrease of 2.3 percent when compared to the same period of 2013 where net migration stood at -6,197.

Fig.3.1: Quarterly Net Migration, 2009 - 2014



Detailed information for the reference period is attached in Tables 1 – 10 and the appendix shows longer time series.

BACKGROUND

The sourced documents for the compilation of International Arrival Statistics were the immigration arrival and departure card forms. These forms are completed by all incoming and outgoing travelers at the three local points of entry namely (1) Apia wharf (2) Faleolo and (3) Fagalii international airports.

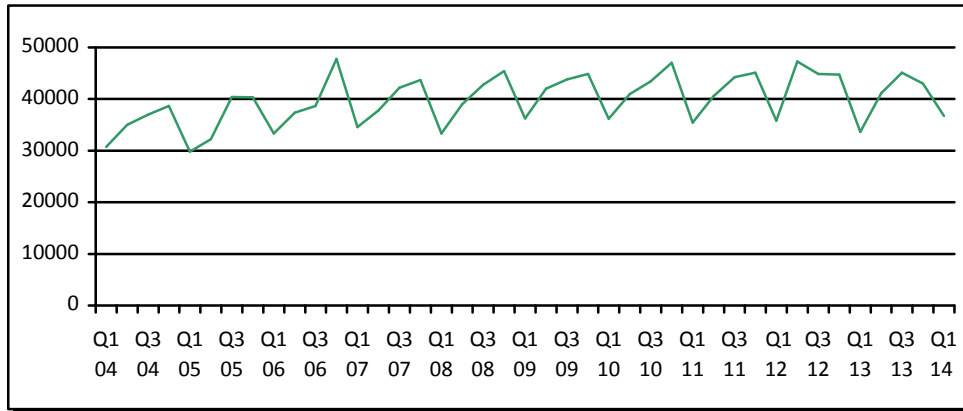
International arrival statistics are compiled on a monthly, quarterly and annual basis. These reports can also be extracted from our website: www.sbs.gov.ws

The migration report for the second quarter of 2014 will be released on 1st October 2014.

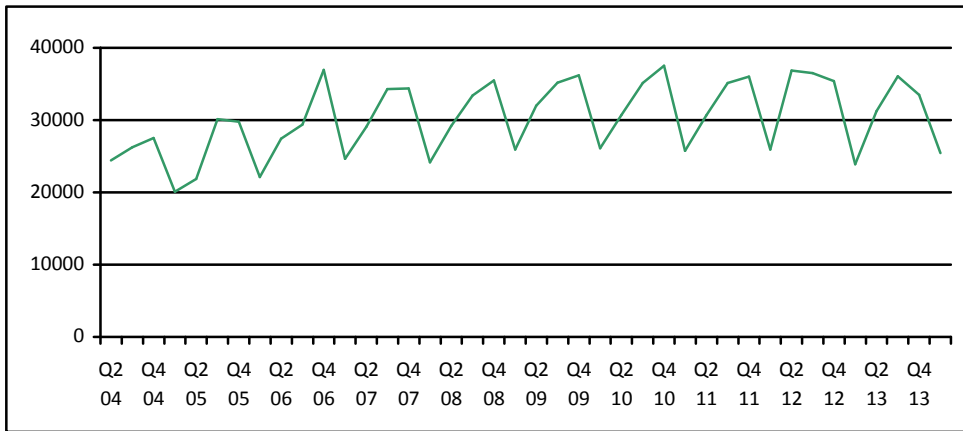
Muagututia Sefuiva Reupena
GOVERNMENT STATISTICIAN

APPENDIX

Graph 1: Quarterly Total Arrivals, 1st quarter 2004 – 1st quarter 2014



Graph 2: Quarterly Total Visitors, 1st quarter 2004 – 1st quarter 2014



Graph 3: Visitors Percentage Change over previous quarter, 1st quarter 2004 – 1st quarter 2014

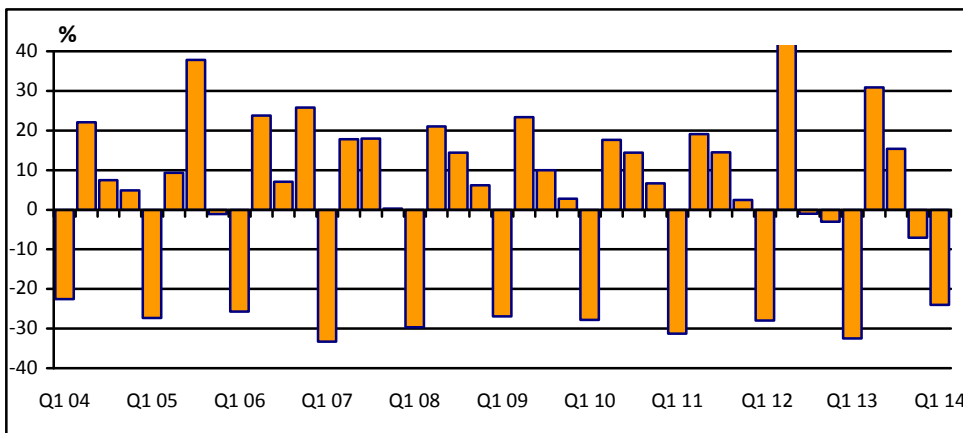


Table 1: Quarterly Arrival and Departure by Mode of Tavel and Net Migration, 2004- 2014.

| Period | Visitors Arrivals | | | Total Arrivals | | | Total Departures | | | Net |
|--------------------------|-------------------|------------|---------------|----------------|--------------|---------------|------------------|--------------|---------------|---------------|
| | Air | Sea | Total | Air | Sea | Total | Air | Sea | Total | Migration |
| 2004 | 93,946 | 4,209 | 98,155 | 129,517 | 11,864 | 141,381 | 131,277 | 12,303 | 143,580 | -2,199 |
| 2005 | 98,544 | 3,263 | 101,807 | 132,200 | 10,557 | 142,757 | 135,008 | 10,936 | 145,944 | -3,187 |
| 2006 | 112,411 | 3,471 | 115,882 | 147,807 | 9,349 | 157,156 | 147,991 | 9,489 | 157,480 | -324 |
| 2007 | 118,653 | 3,699 | 122,352 | 150,584 | 7,631 | 158,215 | 158,099 | 8,578 | 166,677 | -8,458 |
| 2008 | 118,420 | 3,743 | 122,163 | 151,883 | 8,628 | 160,511 | 161,482 | 9,908 | 171,390 | -10,879 |
| 2009 | 127,325 | 1,940 | 129,265 | 161,816 | 5,095 | 166,911 | 156,319 | 6,069 | 162,388 | 4,523 |
| 2010 | 126,970 | 2,530 | 129,500 | 162,052 | 5,539 | 167,591 | 164,426 | 6,326 | 170,752 | -3,161 |
| 2011 | 124,706 | 2,898 | 127,604 | 159,660 | 5,738 | 165,398 | 163,605 | 6,216 | 169,821 | -4,423 |
| 2012 | 131,945 | 2,749 | 134,694 | 167,211 | 5,509 | 172,720 | 167,842 | 6,297 | 174,139 | -1,419 |
| 2013 | 122,171 | 2,502 | 124,673 | 157,542 | 5,335 | 162,877 | 162,333 | 5,885 | 168,218 | -5,341 |
| 2,009 | | | | | | | | | | |
| 1st Quarter | 25,406 | 534 | 25,940 | 35,092 | 1,143 | 36,235 | 44,266 | 1,570 | 45,836 | -9,601 |
| 2nd Quarter | 31,575 | 427 | 32,002 | 40,381 | 1,650 | 42,031 | 36,599 | 2,175 | 38,774 | 3,257 |
| 3rd Quarter | 34,664 | 526 | 35,190 | 42,526 | 1,253 | 43,779 | 36,436 | 1,190 | 37,626 | 6,153 |
| 4th Quarter | 35,680 | 453 | 36,133 | 43,817 | 1,049 | 44,866 | 39,018 | 1,134 | 40,152 | 4,714 |
| 2010 | | | | | | | | | | |
| 1st Quarter | 25,662 | 463 | 26,125 | 35,293 | 919 | 36,212 | 42,563 | 1,335 | 43,898 | -7,686 |
| 2nd Quarter | 30,040 | 677 | 30,717 | 39,257 | 1,685 | 40,942 | 37,383 | 1,933 | 39,316 | 1,626 |
| 3rd Quarter | 34,546 | 602 | 35,148 | 42,065 | 1,374 | 43,439 | 43,804 | 1,381 | 45,185 | -1,746 |
| 4th Quarter | 36,722 | 788 | 37,510 | 45,437 | 1,561 | 46,998 | 40,676 | 1,677 | 42,353 | 4,645 |
| 2011 | | | | | | | | | | |
| 1st Quarter | 24,972 | 794 | 25,766 | 34,010 | 1,440 | 35,450 | 43,290 | 1,737 | 45,027 | -9577 |
| 2nd Quarter | 30,092 | 590 | 30,682 | 39,208 | 1,399 | 40,607 | 37,148 | 1,509 | 38,657 | 1950 |
| 3rd Quarter | 34,478 | 666 | 35,144 | 42,889 | 1,355 | 44,244 | 43,784 | 1,516 | 45,300 | -1056 |
| 4th Quarter | 35,164 | 848 | 36,012 | 43,553 | 1,544 | 45,097 | 39,383 | 1,454 | 40,837 | 4260 |
| 2012 | | | | | | | | | | |
| 1st Quarter | 25,439 | 497 | 25,936 | 34,835 | 995 | 35,830 | 41,389 | 1,377 | 42,766 | -6,936 |
| 2nd Quarter | 35,886 | 985 | 36,871 | 45,168 | 2,085 | 47,253 | 40,819 | 2,346 | 43,165 | 4,088 |
| 3rd Quarter | 35,890 | 607 | 36,497 | 43,867 | 1,017 | 44,884 | 46,659 | 1,101 | 47,760 | -2,876 |
| 4th Quarter | 34,730 | 660 | 35,390 | 43,341 | 1,412 | 44,753 | 38,975 | 1,473 | 40,448 | 4,305 |
| 2013 | | | | | | | | | | |
| 1st Quarter | 23,293 | 580 | 23,873 | 32,484 | 1,140 | 33,624 | 38,219 | 1,602 | 39,821 | -6,197 |
| 2nd Quarter | 30,594 | 651 | 31,245 | 39,785 | 1,365 | 41,150 | 37,728 | 1,719 | 39,447 | 1,703 |
| 3rd Quarter ¹ | 35,463 | 593 | 36,056 | 43,688 | 1,421 | 45,109 | 45,349 | 1,349 | 46,698 | -1,589 |
| 4th Quarter | 32,821 | 678 | 33,499 | 41,585 | 1,409 | 42,994 | 41,037 | 1,215 | 42,252 | 742 |
| 2014 | | | | | | | | | | |
| 1st Quarter | 24,911 | 551 | 25,462 | 35,301 | 1,415 | 36,716 | 41,142 | 1,624 | 42,770 | -6,054 |

Source: Ministry of the Prime Minister and Cabinet - Immigration Division, Ministry for Revenue - Customs Division, and Samoa Bureau of Statistics.

1: Provisional figures

Table 2: Arrivals by Age, Purpose of Entry and Gender, First Quarter 2014 ¹

| AGE | Purpose of Visit | | | | | | | | | | | | | | | | | |
|------------------------------------|------------------|---------------|---------------|---------------|---------------|---------------|---------------------|--------------|--------------|--------------|--------------|------------|--------------------|------------|------------|------------|------------|------------|
| | TOTAL | | | Visitors | | | Returning Residents | | | Transit | | | Temporary Resident | | | Others | | |
| | TOTAL | Male | Female | Total | Male | Female | Total | Male | Female | Total | Male | Female | Total | Male | Female | Total | Male | Female |
| TOTAL | 36,716 | 19,415 | 17,301 | 21,271 | 10,930 | 10,341 | 11,254 | 5,879 | 5,375 | 2,826 | 1,836 | 990 | 930 | 519 | 411 | 435 | 251 | 184 |
| 0 - 4 | 1,809 | 917 | 892 | 1,083 | 536 | 547 | 594 | 310 | 284 | 91 | 53 | 38 | 33 | 14 | 19 | 8 | 4 | 4 |
| 5 - 9 | 1,488 | 760 | 728 | 823 | 422 | 401 | 559 | 271 | 288 | 82 | 51 | 31 | 20 | 14 | 6 | 4 | 2 | 2 |
| 10 - 14 | 1,534 | 763 | 771 | 821 | 419 | 402 | 582 | 274 | 308 | 87 | 48 | 39 | 28 | 15 | 13 | 16 | 7 | 9 |
| 15 - 19 | 2,151 | 1,024 | 1,127 | 1,169 | 527 | 642 | 754 | 354 | 400 | 162 | 103 | 59 | 39 | 26 | 13 | 27 | 14 | 13 |
| 20 - 24 | 3,057 | 1,472 | 1,585 | 1,709 | 740 | 969 | 924 | 483 | 441 | 273 | 174 | 99 | 110 | 55 | 55 | 41 | 20 | 21 |
| 25 - 29 | 3,125 | 1,640 | 1,485 | 1,782 | 836 | 946 | 905 | 512 | 393 | 282 | 192 | 90 | 103 | 63 | 40 | 53 | 37 | 16 |
| 30 - 34 | 2,816 | 1,435 | 1,381 | 1,643 | 770 | 873 | 795 | 416 | 379 | 264 | 186 | 78 | 86 | 47 | 39 | 28 | 16 | 12 |
| 35 - 39 | 2,785 | 1,538 | 1,247 | 1,643 | 879 | 764 | 815 | 450 | 365 | 232 | 154 | 78 | 65 | 37 | 28 | 30 | 18 | 12 |
| 40 - 44 | 3,121 | 1,750 | 1,371 | 1,754 | 945 | 809 | 938 | 508 | 430 | 298 | 213 | 85 | 80 | 50 | 30 | 51 | 34 | 17 |
| 45 - 49 | 3,194 | 1,738 | 1,456 | 1,910 | 1,010 | 900 | 906 | 504 | 402 | 262 | 159 | 103 | 78 | 40 | 38 | 38 | 25 | 13 |
| 50 - 54 | 3,329 | 1,802 | 1,527 | 1,981 | 1,069 | 912 | 948 | 485 | 463 | 286 | 191 | 95 | 76 | 38 | 38 | 38 | 19 | 19 |
| 55 - 59 | 2,891 | 1,606 | 1,285 | 1,728 | 982 | 746 | 872 | 456 | 416 | 178 | 106 | 72 | 72 | 42 | 30 | 41 | 20 | 21 |
| 60 - 64 | 2,212 | 1,204 | 1,008 | 1,333 | 724 | 609 | 629 | 325 | 304 | 153 | 96 | 57 | 66 | 38 | 28 | 31 | 21 | 10 |
| 65 - 69 | 1,579 | 906 | 673 | 944 | 545 | 399 | 483 | 269 | 214 | 93 | 61 | 32 | 45 | 25 | 20 | 14 | 6 | 8 |
| 70 - 74 | 895 | 496 | 399 | 544 | 321 | 223 | 279 | 134 | 145 | 48 | 29 | 19 | 18 | 10 | 8 | 6 | 2 | 4 |
| 75 + | 730 | 364 | 366 | 404 | 205 | 199 | 271 | 128 | 143 | 35 | 20 | 15 | 11 | 5 | 6 | 9 | 6 | 3 |
| % Distribution ² | 100.0 | 52.9 | 47.1 | 57.9 | 29.8 | 28.2 | 30.7 | 16.0 | 14.6 | 7.7 | 5.0 | 2.7 | 2.5 | 1.4 | 1.1 | 1.2 | 0.7 | 0.5 |

Source: Ministry of the Prime Minister and Cabinet - Immigration Division, Ministry for Revenue - Customs Division, and Samoa Bureau of Statistics.

1: Provisional figures

2: Figures are subject to rounding errors

Table 3: Visitors Arrivals by Country of Usual Residence and Mode of Travel, First Quarter 2014 ¹

| Country of Usual Residence | Mode of Travel | | TOTAL | Percentage ² |
|--------------------------------|----------------|------------|---------------|-------------------------|
| | Air | Sea | | |
| OCEANIA | 20,879 | 497 | 21,376 | 84.0 |
| American Samoa | 3,920 | 129 | 4,049 | 15.9 |
| Fiji | 663 | 4 | 667 | 2.6 |
| Cook Island | 45 | 0 | 45 | 0.2 |
| Other Pacific Is | 657 | 221 | 878 | 3.4 |
| New Zealand | 9,847 | 80 | 9,927 | 39.0 |
| Australia | 5,747 | 63 | 5,810 | 22.8 |
| EUROPE | 979 | 8 | 987 | 3.9 |
| United Kingdom | 270 | 1 | 271 | 1.1 |
| Scandinavia | 83 | 1 | 84 | 0.3 |
| Benelux | 13 | 0 | 13 | 0.1 |
| Germany | 323 | 5 | 328 | 1.3 |
| Other Europe | 290 | 1 | 291 | 1.1 |
| AMERICA | 1,714 | 42 | 1,756 | 6.9 |
| U.S.A | 1,615 | 39 | 1,654 | 6.5 |
| Canada | 99 | 3 | 102 | 0.4 |
| ASIA | 1,064 | 1 | 1,065 | 4.2 |
| Japan | 127 | 0 | 127 | 0.5 |
| China | 379 | 0 | 379 | 1.5 |
| Other Asia | 536 | 1 | 537 | 2.1 |
| Korea | 22 | 0 | 22 | 0.1 |
| OTHERS | 158 | 3 | 161 | 0.6 |
| NOT STATED | 117 | 0 | 117 | 0.5 |
| TOTAL | 24,911 | 551 | 25,462 | 100% |
| PERCENTAGE DISTRIBUTION | 97.8 | 2.2 | 100.0% | |

Source: Ministry of the Prime Minister and Cabinet - Immigration Division, Ministry for Revenue - Customs Division, and Samoa Bureau of Statistics.

1: Provisional figures.

2: Figures are subject to rounding errors

- Note:** (i) Visitors refer to all person visiting Samoa other than returning residents and also expatriates who are employed and living in Samoa (**include transit**).
- (ii) Visitors also include Samoan citizens whose country of usual residence are country abroad.
- (iii) **Scandinavia**- refers to countries of Norway, Sweden, Finland and Denmark.
- (iv) **Benelux:** - refers to countries of Belgium, Netherlands and Luxembourg.
- (v) **Exclude Cruise Liner Passengers.**

Table 4: Total Visitors by Usual Residence and Purpose of Visit, First Quarter 2014 ¹

| Usual Residence | Purpose of Visit | | | | | | | | |
|---------------------------------------------|------------------|----------------|----------------------|-------------------------|-----------------------------|------------|--------------|--------------|--------------|
| | TOTAL | % ² | Holiday/ Vacation | Business/ Conference | Visit Friends/ Relatives | Sports | Transit | Others | Not Stated |
| TOTAL | 25,462 | | 6,838 | 2,345 | 10,085 | 138 | 2,826 | 1,065 | 2,165 |
| American Samoa | 4,049 | 15.9 | 538 | 268 | 1,319 | 26 | 828 | 199 | 871 |
| Fiji | 667 | 2.6 | 56 | 210 | 103 | 3 | 115 | 92 | 88 |
| Cook Island | 45 | 0.2 | 10 | 7 | 14 | 1 | 7 | 2 | 4 |
| Other Pacific Is | 878 | 3.4 | 54 | 85 | 142 | 7 | 325 | 121 | 144 |
| New Zealand | 9,927 | 39.0 | 2,753 | 923 | 4,876 | 63 | 531 | 301 | 480 |
| Australia | 5,810 | 22.8 | 1,877 | 439 | 2,800 | 21 | 234 | 184 | 255 |
| United Kingdom | 271 | 1.1 | 152 | 43 | 30 | 1 | 27 | 9 | 9 |
| Scandinavia | 84 | 0.3 | 67 | 1 | 1 | 0 | 4 | 6 | 5 |
| Benelux | 13 | 0.1 | 9 | 0 | 1 | 0 | 1 | 0 | 2 |
| Germany | 328 | 1.3 | 269 | 7 | 28 | 1 | 10 | 7 | 6 |
| Other Europe | 291 | 1.1 | 196 | 13 | 45 | 1 | 12 | 10 | 14 |
| U.S.A. | 1,654 | 6.5 | 533 | 164 | 531 | 10 | 175 | 92 | 149 |
| Canada | 102 | 0.4 | 40 | 8 | 33 | 0 | 8 | 5 | 8 |
| Japan | 127 | 0.5 | 34 | 42 | 17 | 0 | 15 | 6 | 13 |
| China | 379 | 1.5 | 55 | 57 | 31 | 0 | 183 | 6 | 47 |
| Other Asia | 537 | 2.1 | 90 | 51 | 61 | 2 | 280 | 16 | 37 |
| Other Countries | 161 | 0.6 | 86 | 18 | 30 | 0 | 17 | 3 | 7 |
| Korea | 22 | 0.5 | 3 | 6 | 6 | 0 | 5 | 1 | 1 |
| Not Stated | 117 | 2.9 | 16 | 3 | 17 | 2 | 49 | 5 | 25 |
| Percentage Distribution ² | 100.0 | | 26.9 | 9.2 | 39.6 | 0.5 | 11.1 | 4.2 | 8.5 |

Source: Ministry of the Prime Minister and Cabinet - Immigration Division, Ministry for Revenue - Customs Division and Samoa Bureau of Statistics.

Note : Total visitors include transit.

: Sports was re-introduced again in the Purpose of Visit Category as of August 2008.

1: Provisional figures

2: Figures are subject to rounding errors

Table 5: Total Arrivals by Carrier and Purpose of Entry, First Quarter 2014 ¹

| Carrier | TOTAL | Purpose of Entry | | | | |
|---------------------------|---------------|---------------------|----------------|----------------|----------------|-------------|
| | | Returning Residents | % ² | Total Visitors | % ² | |
| TOTAL | 36,716 | 100% | 11,254 | 30.7 | 25,462 | 69.3 |
| AIR | 35,301 | 96.1 | 10,390 | 28.3 | 24,911 | 67.8 |
| Virgin Samoa ³ | 13,627 | 37.1 | 4,328 | 11.8 | 9,299 | 25.3 |
| Polynesian | 7,647 | 20.8 | 2,296 | 6.3 | 5,351 | 14.6 |
| Inter Island | 612 | 1.7 | 142 | 0.4 | 470 | 1.3 |
| Air New Zealand | 9,803 | 26.7 | 2,829 | 7.7 | 6,974 | 19.0 |
| Fiji Airways ⁴ | 3,298 | 9.0 | 786 | 2.1 | 2,512 | 6.8 |
| Other Air Carrier | 314 | 0.9 | 9 | 0.0 | 305 | 0.8 |
| SEA | 1,415 | 3.6 | 864 | 2.4 | 551 | 1.5 |
| Lady Naomi | 1,015 | 2.8 | 775 | 2.1 | 240 | 0.7 |
| Yacht | 3 | 0.0 | 0 | 0.0 | 3 | 0.0 |
| Other Sea Carrier | 397 | 0.8 | 89 | 0.2 | 308 | 0.8 |

Source: Ministry of the Prime Minister and Cabinet - Immigration Division, Ministry for Revenue - Customs Division and Samoa Bureau of Statistics.

Note: Total visitors include transit.

- 1: Provisional figures
- 2: Figures are subject to rounding errors
- 3: Polynesian Blue is now called Virgin Samoa
- 4: Air Pacific is now called Fiji Airways

Table 6: Visitors by Duration of Stay and Place of Stay, First Quarter 2014 ¹

| Duration of Stay | Place of Stay | | | |
|--------------------------------|---------------|--------------|---------------|------------|
| | TOTAL | Hotel/Motel | Private | Not Stated |
| TOTAL | 22,636 | 6,352 | 15,780 | 504 |
| 1day | 483 | 203 | 252 | 28 |
| 2days | 1,929 | 982 | 912 | 35 |
| 3days | 824 | 386 | 430 | 8 |
| 4days | 974 | 444 | 511 | 19 |
| 5days | 1,247 | 588 | 638 | 21 |
| 6days | 882 | 532 | 341 | 9 |
| 7days | 2,224 | 887 | 1,304 | 33 |
| 8-14days | 5,930 | 1,505 | 4,342 | 83 |
| 15-30days | 4,029 | 413 | 3,536 | 80 |
| 31-60days | 546 | 108 | 421 | 17 |
| 61-90days | 238 | 13 | 220 | 5 |
| 91-180days | 187 | 12 | 172 | 3 |
| 181-365days | 203 | 23 | 173 | 7 |
| Not Stated | 2,940 | 256 | 2,528 | 156 |
| Percentage Distribution | 100.0 | 28.1 | 69.7 | 2.2 |

Source: Ministry of the Prime Minister and Cabinet - Immigration Division,
Ministry for Revenue - Customs Division and Samoa Bureau of Statistics.

Note: Visitors here, exclude transit.

1: Provisional figures

Table 7: Departures by Nationality, Citizenship and Gender, First Quarter 2014 ¹

| Nationality | TOTAL | | | Samoa Citizen | | | Temporary Residents | | | Visitors | | | Other Citizens | | | |
|------------------------------------|---------------|-----------------------|---------------|---------------|---------------|--------------|---------------------|------------|------------|------------|---------------|---------------|----------------|------------|------------|------------|
| | TOTAL | Male | Female | Total | Male | Female | Total | Male | Female | Total | Male | Female | Total | Male | Female | |
| TOTAL | 42,770 | % ² | 22,716 | 20,054 | 14,135 | 7,919 | 6,216 | 928 | 515 | 413 | 26,961 | 13,824 | 13,137 | 746 | 458 | 288 |
| Samoa | 15,167 | 35.5 | 8,348 | 6,819 | 12,047 | 6,796 | 5,251 | 247 | 139 | 108 | 2,821 | 1,386 | 1,435 | 52 | 27 | 25 |
| American Samoa | 1,307 | 3.1 | 653 | 654 | 335 | 173 | 162 | 27 | 13 | 14 | 922 | 456 | 466 | 23 | 11 | 12 |
| Fiji | 632 | 1.5 | 366 | 266 | 49 | 25 | 24 | 45 | 23 | 22 | 508 | 299 | 209 | 30 | 19 | 11 |
| Cook Island | 57 | 0.1 | 34 | 23 | 3 | 2 | 1 | 4 | 1 | 3 | 48 | 30 | 18 | 2 | 1 | 1 |
| Other Pacific Is | 594 | 1.4 | 388 | 206 | 58 | 35 | 23 | 26 | 19 | 7 | 468 | 298 | 170 | 42 | 36 | 6 |
| New Zealand | 14,178 | 33.1 | 6,995 | 7,183 | 969 | 519 | 450 | 253 | 122 | 131 | 12,672 | 6,198 | 6,474 | 284 | 156 | 128 |
| Australia | 4,660 | 10.9 | 2,390 | 2,270 | 214 | 107 | 107 | 131 | 76 | 55 | 4,253 | 2,170 | 2,083 | 62 | 37 | 25 |
| United Kingdom | 343 | 0.8 | 194 | 149 | 11 | 6 | 5 | 20 | 16 | 4 | 306 | 168 | 138 | 6 | 4 | 2 |
| Scandinavia | 90 | 0.2 | 39 | 51 | 3 | 0 | 3 | 1 | 1 | 0 | 83 | 37 | 46 | 3 | 1 | 2 |
| Benelux | 71 | 0.2 | 45 | 26 | 11 | 6 | 5 | 4 | 2 | 2 | 55 | 36 | 19 | 1 | 1 | 0 |
| Germany | 345 | 0.8 | 189 | 156 | 15 | 13 | 2 | 4 | 0 | 4 | 326 | 176 | 150 | 0 | 0 | 0 |
| Other Europe | 467 | 1.1 | 258 | 209 | 6 | 0 | 6 | 9 | 3 | 6 | 447 | 252 | 195 | 5 | 3 | 2 |
| United States | 2,697 | 6.3 | 1,404 | 1,293 | 233 | 116 | 117 | 87 | 58 | 29 | 2,312 | 1,192 | 1,120 | 65 | 38 | 27 |
| Canada | 119 | 0.3 | 66 | 53 | 0 | 0 | 0 | 4 | 3 | 1 | 111 | 60 | 51 | 4 | 3 | 1 |
| Japan | 137 | 0.3 | 94 | 43 | 4 | 4 | 0 | 11 | 5 | 6 | 120 | 83 | 37 | 2 | 2 | 0 |
| China | 598 | 1.4 | 437 | 161 | 30 | 27 | 3 | 14 | 9 | 5 | 475 | 339 | 136 | 79 | 62 | 17 |
| Other Asia | 309 | 0.7 | 185 | 124 | 4 | 4 | 0 | 6 | 2 | 4 | 294 | 174 | 120 | 5 | 5 | 0 |
| Others | 506 | 1.2 | 351 | 155 | 29 | 19 | 10 | 16 | 13 | 3 | 391 | 274 | 117 | 70 | 45 | 25 |
| Korea | 50 | 0.1 | 35 | 15 | 4 | 3 | 1 | 1 | 0 | 1 | 41 | 28 | 13 | 4 | 4 | 0 |
| Not Stated | 443 | 1.0 | 245 | 198 | 110 | 64 | 46 | 18 | 10 | 8 | 308 | 168 | 140 | 7 | 3 | 4 |
| % Distribution ² | 100.0 | | 53.1 | 46.9 | 33.0 | 18.5 | 27.4 | 2.2 | 1.2 | 1.0 | 63.0 | 32.3 | 30.7 | 1.7 | 1.1 | 0.7 |

Source: Ministry of the Prime Minister and Cabinet - Immigration Division, Ministry for Revenue - Customs Division and Samoa Bureau of Statistics.

1: Provisional figures

2: Figures are subject to rounding errors

Table 8: Departures by Purpose of Travel and Gender (Samoa-citizen-only), First Quarter 2014 ¹

| Purpose of Travel | Samoa Citizen | | | |
|------------------------------------|---------------|----------------|--------------|--------------|
| | TOTAL | % ² | Male | Female |
| TOTAL | 14,135 | | 7,919 | 6,216 |
| Holiday/ Vacation | 2,590 | 18.3 | 1,451 | 1,139 |
| Visit Friends/ Relatives | 7,449 | 52.7 | 4,037 | 3,412 |
| Business/Conference | 669 | 4.7 | 421 | 248 |
| Sporting/Activities | 134 | 0.9 | 113 | 21 |
| Others | 1,024 | 7.2 | 581 | 443 |
| Not Stated | 2,269 | 16.1 | 1,316 | 953 |
| % Distribution ² | 100 | | 56.0 | 44.0 |

Source: Ministry of the Prime Minister and Cabinet - Immigration Division,
Ministry for Revenue - Customs Division and Samoa Bureau of Statistics.

1: Provisional figures

2: Figures are subject to rounding errors

Table 9: Departures by Place of Stay Abroad and Gender (Samoa-citizen-only), First Quarter 2014 ¹

| Place of Stay Abroad | TOTAL | Gender | | |
|----------------------|---------------|-----------------------|--------------|--------------|
| | | Male | Female | |
| TOTAL | 14,135 | % ² | 7,919 | 6,216 |
| American Samoa | 1,660 | 11.7 | 921 | 739 |
| Fiji | 267 | 1.9 | 132 | 135 |
| Cook Island | 19 | 0.1 | 9 | 10 |
| Other Pacific Is | 111 | 0.8 | 63 | 48 |
| New Zealand | 7,367 | 52.1 | 4,069 | 3,298 |
| Australia | 616 | 4.4 | 365 | 251 |
| United Kingdom | 7 | 0.0 | 5 | 2 |
| Scandinavia | 15 | 0.1 | 12 | 3 |
| Benelux | 6 | 0.0 | 4 | 2 |
| Germany | 9 | 0.1 | 5 | 4 |
| Other Europe | 26 | 0.2 | 16 | 10 |
| United States | 236 | 1.7 | 127 | 109 |
| Canada | 4 | 0.0 | 1 | 3 |
| Japan | 16 | 0.1 | 8 | 8 |
| Other Asia | 26 | 0.2 | 13 | 13 |
| Others | 16 | 0.1 | 9 | 7 |
| China | 8 | 0.1 | 6 | 2 |
| Korea | 2 | 0.0 | 0 | 2 |
| Not Stated | 3,724 | 26.3 | 2,154 | 1,570 |

Source: Ministry of the Prime Minister and Cabinet - Immigration Division, Ministry of Revenue - Customs Division and Samoa Bureau of Statistics.

1: Provisional figures

2: Figures are subject to rounding errors

Table 10: Departures by Occupation, Education and Gender, First Quarter 2014¹

| OCCUPATION | TOTAL | | | Primary | | | Secondary | | | Tertiary | | | Kindy & None | | | Not Stated | | | |
|-------------------|---------------|----------------------|---------------|---------------|---------------|--------------|--------------|---------------|--------------|--------------|---------------|--------------|--------------|--------------|------------|------------|--------------|--------------|--------------|
| | TOTAL | Male | Female | Total | Male | Female | Total | Male | Female | Total | Male | Female | Total | Male | Female | Total | Male | Female | |
| TOTAL | 42,770 | %² | 22,716 | 20,054 | 11,575 | 6,387 | 5,188 | 11,816 | 6,436 | 5,380 | 14,389 | 7,331 | 7,058 | 1,490 | 769 | 721 | 3,500 | 1,793 | 1,707 |
| Army Airforce | 61 | 0.1 | 44 | 17 | 12 | 9 | 3 | 11 | 4 | 7 | 35 | 28 | 7 | 0 | 0 | 0 | 3 | 3 | 0 |
| Senior Official | 3,226 | 7.5 | 2,008 | 1,218 | 581 | 375 | 206 | 640 | 387 | 253 | 1,825 | 1,138 | 687 | 3 | 2 | 1 | 177 | 106 | 71 |
| Professional | 4,661 | 10.9 | 2,298 | 2,363 | 610 | 323 | 287 | 683 | 364 | 319 | 2,989 | 1,424 | 1,565 | 0 | 0 | 0 | 379 | 187 | 192 |
| Technician | 3,850 | 9.0 | 2,104 | 1,746 | 721 | 387 | 334 | 869 | 476 | 393 | 2,120 | 1,158 | 962 | 0 | 0 | 0 | 140 | 83 | 57 |
| Clerical | 519 | 1.2 | 194 | 325 | 72 | 32 | 40 | 160 | 61 | 99 | 229 | 81 | 148 | 0 | 0 | 0 | 58 | 20 | 38 |
| Services workers | 2,851 | 6.7 | 1,075 | 1,776 | 595 | 248 | 347 | 989 | 348 | 641 | 972 | 377 | 595 | 2 | 1 | 1 | 293 | 101 | 192 |
| Agricultural work | 1,016 | 2.4 | 934 | 82 | 276 | 258 | 18 | 454 | 432 | 22 | 204 | 170 | 34 | 3 | 1 | 2 | 79 | 73 | 6 |
| Craft/tradework | 880 | 2.1 | 748 | 132 | 188 | 166 | 22 | 375 | 328 | 47 | 241 | 198 | 43 | 0 | 0 | 0 | 76 | 56 | 20 |
| Plant/machinery | 1,842 | 4.3 | 1,454 | 388 | 415 | 339 | 76 | 810 | 631 | 179 | 447 | 365 | 82 | 5 | 4 | 1 | 165 | 115 | 50 |
| Labours | 1,293 | 3.0 | 595 | 698 | 283 | 164 | 119 | 551 | 257 | 294 | 284 | 111 | 173 | 1 | 0 | 1 | 174 | 63 | 111 |
| Students | 6,400 | 15.0 | 2,976 | 3,424 | 2,405 | 1,208 | 1,197 | 1,643 | 786 | 857 | 1,653 | 632 | 1,021 | 164 | 86 | 78 | 535 | 264 | 271 |
| Infant/retired | 2,417 | 5.7 | 1,300 | 1,117 | 602 | 331 | 271 | 540 | 285 | 255 | 512 | 283 | 229 | 321 | 167 | 154 | 442 | 234 | 208 |
| Unemployed | 183 | 0.4 | 89 | 94 | 49 | 28 | 21 | 66 | 33 | 33 | 46 | 13 | 33 | 3 | 2 | 1 | 19 | 13 | 6 |
| Not Stated | 13,571 | 31.7 | 6,897 | 6,674 | 4,766 | 2,519 | 2,247 | 4,025 | 2,044 | 1,981 | 2,832 | 1,353 | 1,479 | 988 | 506 | 482 | 960 | 475 | 485 |

Source: Ministry of the Prime Minister and Cabinet - Immigration Division, Ministry for Revenue - Customs Division and Samoa Bureau of Statistics

1: Provisional figures