

Please address all correspondence to the Government Statistician
 In reply, please quote the file reference



File Ref: IAS 01/14

GOVERNMENT OF SAMOA SAMOA BUREAU OF STATISTICS

International Arrival Statistics January 2014

HIGHLIGHTS OF THE MONTH

In January 2014 compared with January 2013:

- ❖ Total arrivals (15,049) increased by 13.3 percent
- ❖ Total visitors (10,002) also increased by 10.2 percent
- ❖ More visitors arrived from New Zealand (up by 380), Australia (up by 360), USA (up by 110) and American Samoa (up by 10).

January 2014	Number	Change from previous month	Change from previous year
All Arrivals	15,049	-16.0%	13.3%
All Visitors	10,002	-31.1%	10.2%

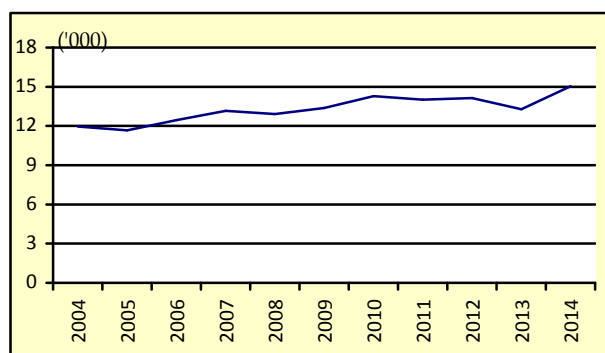
OVERVIEW

1. TOTAL ARRIVALS

The total International Arrival Statistics recorded for the month of **January 2014** (table 1), reveals a decrease of 16.0 percent over the previous month of December but an increase of 13.3 percent over the corresponding month of January 2013. (Refer Fig. 1)

Air was the preferred mode of travel to Samoa, representing 97.8 percent (14,715) of total arrivals, while the remaining 2.2 percent (334) arrived by sea in January 2014.

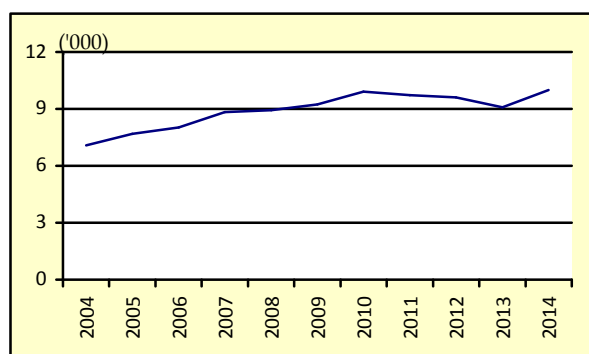
Fig. 1: January Total Arrivals, 2004 - 2014



2. TOTAL VISITORS

Overall Visitors numbered 10,002 for the month under review reveals a decrease of 31.1 percent over the previous month but an increase of 10.2 percent when compared to the corresponding month of January 2013. (Refer Fig. 2).

Fig. 2: January Total Visitors, 2004 - 2014



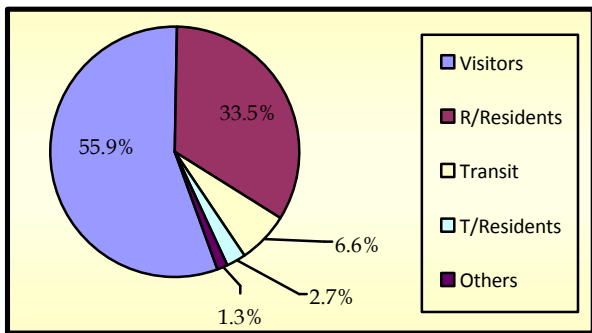
Visitor arrivals have a strong seasonal pattern with a regular peak of numbers during holiday seasons normally from December to January. The smoothed short-term trend for visitor arrivals adjusting for seasonal pattern is shown in Appendix Graph 2.

3. TOTAL ARRIVALS BY PURPOSE OF ENTRY

Visitors, including transit, made up the largest component of all arrivals with 32.2 percent (4,846) being males and 30.2 percent (4,548) being females.

Male and Female returning residents made up 17.0 (2,553) and 16.6 percent (2,494) respectively of total arrivals. Additionally, temporary residents made up 2.7 percent (407) of total arrivals with 1.6 percent (234) being males and 1.1 percent (173) being females. Other purposes of entry made up the remainder of the total arrivals with 1.3 percent (201). (Refer Fig. 3)

Fig. 3: Total Arrivals, by Purpose of Visit

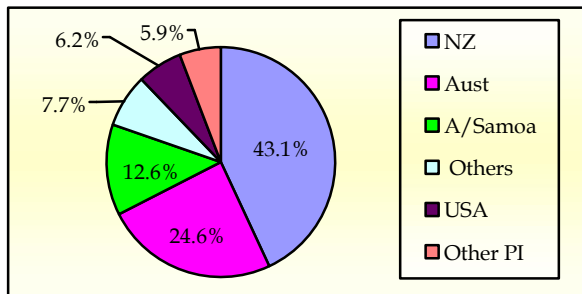


4. VISITORS BY COUNTRY OF USUAL RESIDENCE

New Zealand remains as the leading country in visitors' arrival by country of usual residence (Table 3) accounting for 43.1 percent or 4,307 of total visitors, compared to 41.4 percent or 6,005 visitors reported in the previous month. Australia followed next with a 24.6 percent share (2,465) compared to 27.3 percent or 3,958 visitors reported in the previous month.

American Samoa represented 12.6 percent (1,256) in January 2014 compared to 17.9 percent or 2,592 visitors in the previous month and the United States of America remains the smallest of the principal source markets with a share of 6.2 percent (616) compared to 4.6 percent or 673 visitors reported in the previous month. (Refer Fig. 4)

Fig. 4: Total Visitors, by Country of Usual Residence

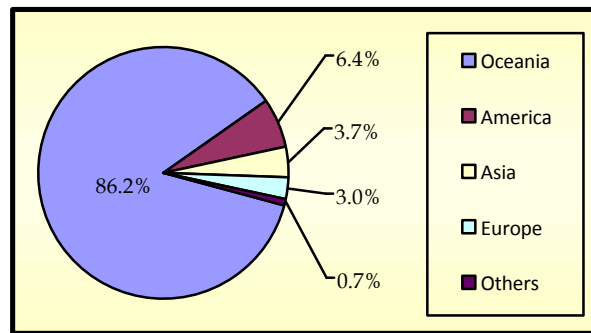


5. VISITORS BY REGION

The Oceanic Region had the highest share of total visitors with 86.2 percent compared to 90.5 percent reported in December 2013, followed by America with 6.4 percent (4.8 percent in December 2013).

Asia represented 3.7 percent of total visitors compared with 1.9 percent reported in the previous month, while Europe represented the lowest share with 3.0 percent compared with 1.6 reported in the previous month of December. (Refer Fig. 5).

Fig. 5: Total Visitors, by Region



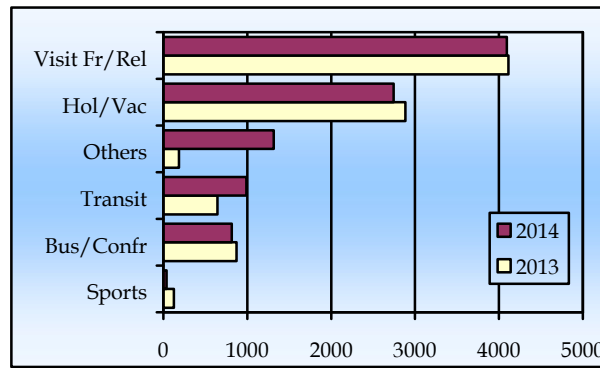
6. VISITORS BY PURPOSE OF VISIT

The principal source markets (table 4) namely New Zealand, American Samoa, Australia, and the United States of America constitute 86.4 percent of all visitors visiting Samoa in January 2014.

Majority of visitors (40.9 percent) were here to visit friends and relatives while 27.5 percent came on holiday and vacations.

Business and Conference visitors made up 8.2 percent and those who were here in transit to other destinations made up 9.9 percent of all visitors. Fig.6 depicts total visitors by purpose of visit for January 2013 and January 2014.

Fig. 6: Total Visitors, by Purpose of Visit

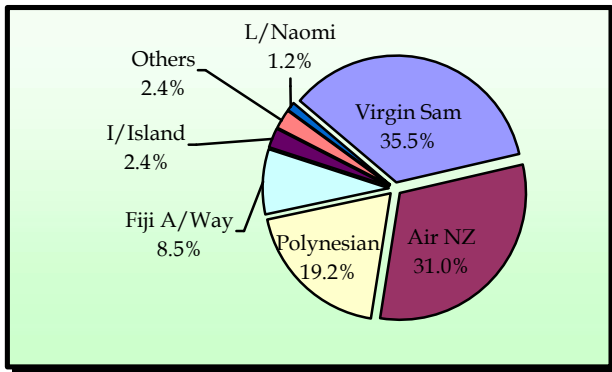


7. TOTAL ARRIVALS BY CARRIER

As depicted in table 5, Virgin Samoa, formerly known as Polynesian Blue, leads the way of arrival by carriers' during the reference period with a 35.4 percent share (5,324 passengers) followed by Air New Zealand with a 31.0 percent share (4,671 passengers).

Polynesian Airlines brought in 19.2 percent (2,882) of total arrivals while Fiji Airways, formerly known as Air Pacific, recorded a share of 8.5 percent (1,273). Fig. 7 illustrates total arrivals by carrier during the reference period.

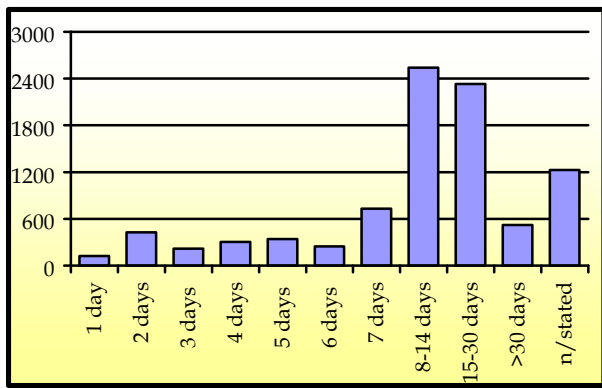
Fig. 7: Total Arrivals by Carrier



8. VISITORS DURATION AND PLACE OF STAY

The usual visitor's duration of stay in Samoa (Table 6) is between eight and thirty days, as shown in Fig. 8.

Fig. 8: Total Visitors by Duration of Stay



Most visitors (77.1 percent or 6,951 visitors) reported staying in private accommodation or with families/ relatives while 20.5 percent (1,846) stayed in hotels/ motels. The remaining 2.4 percent or 214 visitors did not state their place of stay. (Refer Fig. 9).

Fig. 9: Total Visitors by Place of Stay

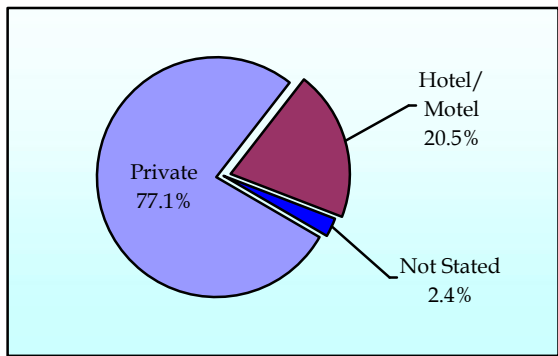
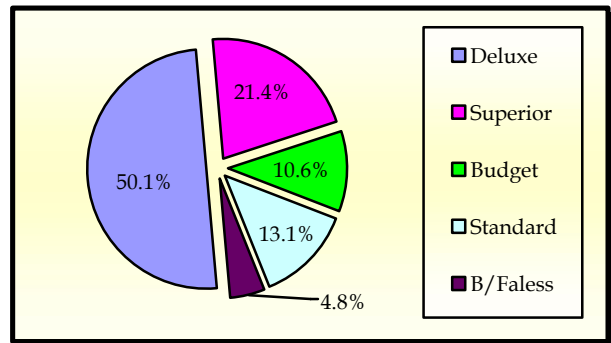


Fig. 10 portrays the number of visitors who stayed in hotels/ motels (1,846) by type of accommodation (hotel/ motel), within the reference month.

Fig. 10: Visitors Staying in Hotels/ Motels by Type of Accommodation



Detailed information for the reference period is attached in Tables 1 – 6 and the appendix shows longer time series.

BACKGROUND

The sourced documents for the compilation of International Arrival Statistics are the immigration arrival and departure card forms.

These forms are completed by all incoming and outgoing travelers at the three local points of entry namely (1) Apia wharf (2) Faleolo and (3) Fagalii international airports.

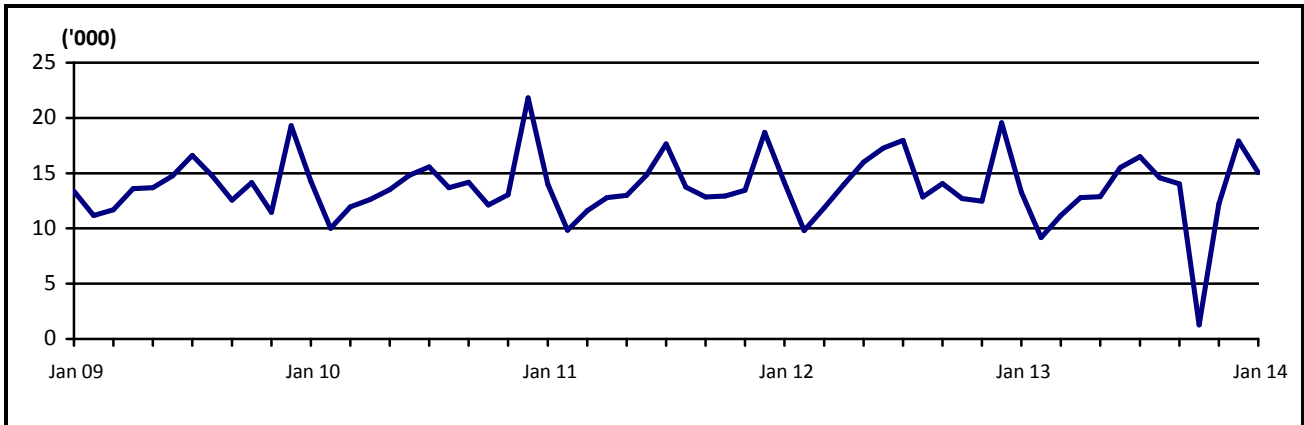
International arrival statistics are compiled on a monthly, quarterly and annual basis. These reports can also be extracted from our website: www.sbs.gov.ws

The migration report for the month of February 2014 will be released on 24th March.

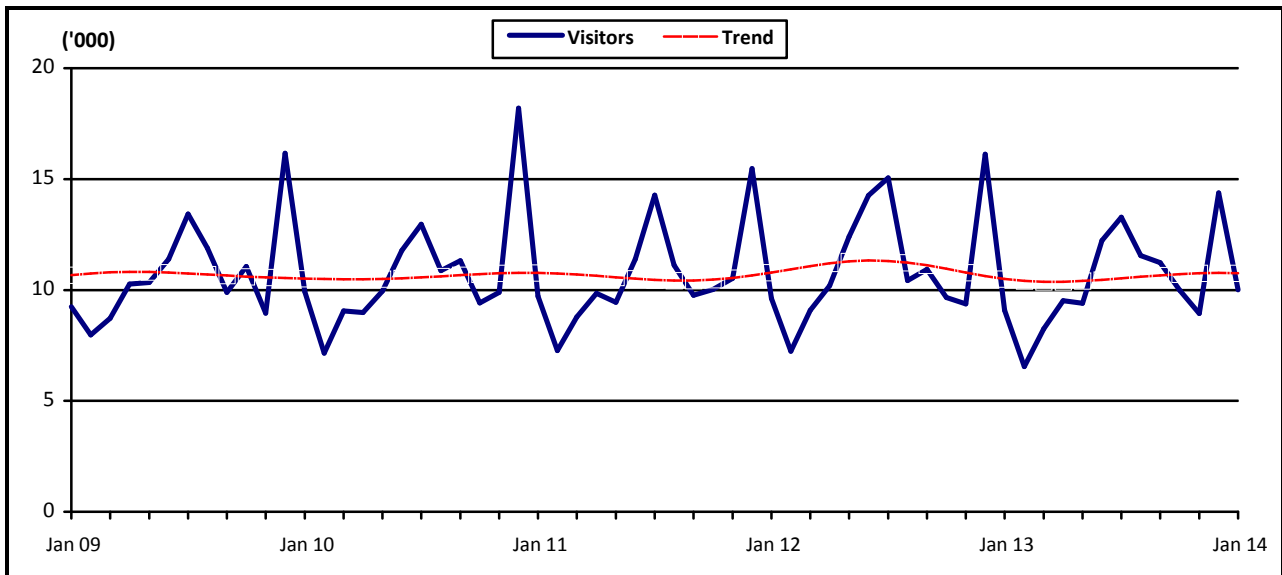

Muagututi'a S Reupena
GOVERNMENT STATISTICIAN

APPENDIX

Graph 1: Monthly Total Arrivals, January 2009 – January 2014



Graph 2: Monthly Total Visitors, January 2009 – January 2014



Graph 3: Visitors Percentage Change over Previous month, January 2008 – January 2014

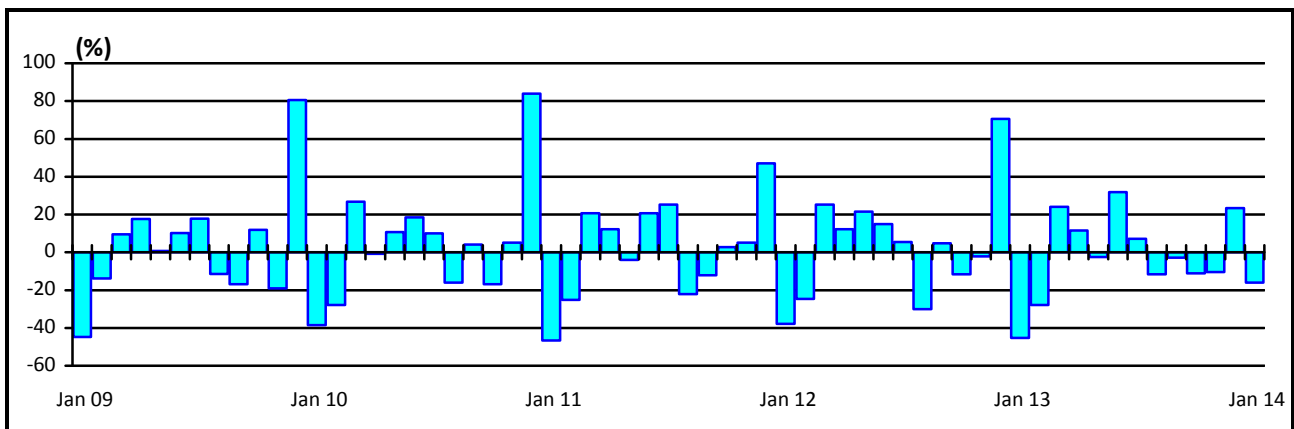


Table 1: Monthly Arrival and Departure by Mode of Tavel and Net Migration, 2004 - 2013.

Period	Visitors Arrivals			Total Arrivals			Total Departures			Net Migration
	Air	Sea	Total	Air	Sea	Total	Air	Sea	Total	
2004	93,946	4,209	98,155	129,517	11,864	141,381	131,277	12,303	143,580	-2,199
2005	98,544	3,263	101,807	132,200	10,557	142,757	135,008	10,936	145,944	-3,187
2006	112,411	3,471	115,882	147,807	9,349	157,156	147,991	9,489	157,480	-324
2007	118,653	3,703	122,356	150,584	7,635	158,219	158,099	8,578	166,677	-8,458
2008	118,459	3,743	122,202	151,883	8,628	160,511	161,482	9,908	171,390	-10,879
2009	127,327	1,978	129,305	161,816	5,095	166,911	156,319	6,069	162,388	4,523
2010	126,970	2,530	129,500	162,052	5,539	167,591	164,426	6,326	170,752	-3,161
2011	124,706	2,898	127,604	159,660	5,738	165,398	163,605	6,216	169,821	-4,423
2012	131,945	2,749	134,694	167,211	5,509	172,720	167,842	6,297	174,139	-1,419
2013	122,172	2,505	124,677	157,542	5,335	162,877	148,151	5,381	153,532	...
2014	9,847	155	10,002	14,715	334	15,049
2011										
January	9,319	399	9,718	13,382	626	14,008	19,405	610	20,015	-6,007
February	7,030	243	7,273	9,387	443	9,830	11,671	592	12,263	-2,433
March	8,623	152	8,775	11,241	371	11,612	12,214	535	12,749	-1,137
April	9,733	109	9,842	12,473	323	12,796	11,993	363	12,356	440
May	9,234	214	9,448	12,543	444	12,987	12,718	394	13,112	-125
June	11,125	267	11,392	14,192	632	14,824	12,437	752	13,189	1,635
July	14,009	260	14,269	17,124	525	17,649	17,000	374	17,374	275
August	10,899	219	11,118	13,383	372	13,755	14,332	638	14,970	-1,215
September	9,570	187	9,757	12,382	458	12,840	12,452	504	12,956	-116
October	9,868	150	10,018	12,646	298	12,944	13,028	353	13,381	-437
November	10,224	302	10,526	12,946	508	13,454	11,918	566	12,484	970
December	15,072	396	15,468	17,961	738	18,699	14,437	535	14,972	3,727
2012										
January	9,480	133	9,613	13,878	267	14,145	18,055	554	18,609	-4,464
February	7,033	212	7,245	9,453	369	9,822	12,300	449	12,749	-2,927
March	8,926	152	9,078	11,504	359	11,863	11,034	374	11,408	455
April	10,095	104	10,199	13,157	820	13,977	12,989	1,012	14,001	-24
May	11,908	502	12,410	15,264	730	15,994	11,514	485	11,999	3,995
June	13,883	379	14,262	16,747	535	17,282	16,316	849	17,165	117
July	14,913	135	15,048	17,705	261	17,966	18,995	319	19,314	-1,348
August	10,228	205	10,433	12,509	334	12,843	13,921	453	14,374	-1,531
September	10,749	267	11,016	13,653	422	14,075	13,743	329	14,072	3
October	9,604	97	9,701	12,378	330	12,708	13,764	460	14,224	-1,516
November	9,190	266	9,456	11,943	539	12,482	11,369	395	11,764	718
December	15,936	297	16,233	19,020	543	19,563	13,842	618	14,460	5,103
2013										
January	8,821	259	9,080	12,952	334	13,286	16,397	649	17,046	-3,760
February	6,386	161	6,547	8,756	407	9,163	12,210	515	12,725	-3,562
March	8,086	160	8,246	10,776	399	11,175	9,612	438	10,050	1,125
April	9,351	165	9,516	12,325	453	12,778	12,576	653	13,229	-451
May	9,216	190	9,406	12,496	375	12,871	11,492	606	12,098	773
June	12,027	296	12,323	14,964	537	15,501	13,660	460	14,120	1,381
July	13,068	207	13,275	15,901	593	16,494	16,442	464	16,906	-412
August	11,380	175	11,555	14,046	535	14,581	15,063	536	15,599	-1,018
September	11,016	211	11,227	13,741	293	14,034	13,844	349	14,193	-159
October	9,828	209	10,037	12,512	361	12,873	14,773	158	14,931	-2,058
November	8,768	190	8,958	11,753	453	12,206	12,082	553	12,635	-502
December	14,225	282	14,507	17,320	595	17,915
2014										
January /1	9,847	155	10,002	14,715	334	15,049

Source : Ministry of the Prime Minister and Cabinet- Immigration Division; Ministry for Revenue- Customs Division and Samoa Bureau of Statistics.

1: Provisional figures

... Denote not yet available

■ : Revised Figures

Table 2: Total Arrivals by Age, Purpose of Entry and Gender, January 2014 ¹

Age	Purpose of Entry																	
	Total			Visitors			Returning Residents			Transit			Temporary Residents			Others		
	Total	Male	Female	Total	Male	Female	Total	Male	Female	Total	Male	Female	Total	Male	Female	Total	Male	Female
Total	15,049	7,757	7,292	8,403	4,198	4,205	5,047	2,553	2,494	991	648	343	407	234	173	201	124	77
0 - 4	816	426	390	464	238	226	308	159	149	26	18	8	16	9	7	2	2	0
5 - 9	852	438	414	457	229	228	342	177	165	39	23	16	13	8	5	1	1	0
10 - 14	995	471	524	503	244	259	418	192	226	47	23	24	17	8	9	10	4	6
15 - 19	1,113	503	610	548	231	317	476	214	262	57	36	21	16	12	4	16	10	6
20 - 24	1,271	595	676	699	301	398	423	206	217	97	58	39	33	21	12	19	9	10
25 - 29	1,194	636	558	616	282	334	405	229	176	104	74	30	41	26	15	28	25	3
30 - 34	1,075	540	535	599	277	322	316	161	155	99	72	27	45	22	23	16	8	8
35 - 39	1,057	561	496	607	319	288	323	160	163	78	56	22	37	19	18	12	7	5
40 - 44	1,201	660	541	644	345	299	379	195	184	116	80	36	42	27	15	20	13	7
45 - 49	1,218	656	562	728	379	349	337	186	151	99	62	37	40	19	21	14	10	4
50 - 54	1,221	660	561	712	376	336	380	199	181	88	60	28	25	16	9	16	9	7
55 - 59	1,032	554	478	624	341	283	316	160	156	47	27	20	26	16	10	19	10	9
60 - 64	847	431	416	508	261	247	254	119	135	46	28	18	23	13	10	16	10	6
65 - 69	586	333	253	356	201	155	171	96	75	31	21	10	19	11	8	9	4	5
70 - 74	309	170	139	189	103	86	104	56	48	8	6	2	8	5	3	0	0	0
75 +	262	123	139	149	71	78	95	44	51	9	4	5	6	2	4	3	2	1
% Distribution ²	100	51.5	48.5	55.8	27.9	27.9	33.5	17.0	16.6	6.6	4.3	2.3	2.7	1.6	1.1	1.3	0.8	0.5

Source: Ministry of the Prime Minister and Cabinet - Immigration Division; Ministry for Revenue - Customs Division and Samoa Bureau of Statistics.

1: Provisional figures

2: Figures are subject to rounding errors

Note: The Purpose of Entry categories of Temporary Residents and Others were introduced as a result of the introduction of the new arrival card

Table 3: Total Visitors Arrivals by Country of Usual Residents and Mode of Travel, January 2014 ¹

Country of Usual Residence	Mode of Travel			Percentage (%) ²
	Air	Sea	Total	
OCEANIA	8,499	120	8,619	86.2
American Samoa	1,218	38	1,256	12.6
Fiji	296	1	297	3.0
Cook Island	16	0	16	0.2
Other Pacific Is	230	48	278	2.8
New Zealand	4,278	29	4,307	43.1
Australia	2,461	4	2,465	24.6
EUROPE	297	0	297	3.0
United Kingdom	93	0	93	0.9
Scandinavia	27	0	27	0.3
Benelux	7	0	7	0.1
Germany	72	0	72	0.7
Other Europe	98	0	98	1.0
AMERICA	610	34	644	6.4
U.S.A	582	34	616	6.2
Canada	28	0	28	0.3
ASIA	369	1	370	3.7
Japan	45	0	45	0.4
China	157	0	157	1.6
Korea	6	0	6	0.1
Other Asia	161	1	162	1.6
OTHERS	72	0	72	0.7
TOTAL	9,847	155	10,002	100%
PERCENTAGE DISTRIBUTION	98.5	1.5%	100%	

Source: Ministry of the Prime Minister and Cabinet- Immigration Division; Ministry for Revenue- Customs Division and Samoa Bureau of Statistics.

1: Provisional figures.

2: Figures are subject to rounding errors

Note: (i) Visitors refer to all person visiting Samoa other than returning residents and also expatriates who are employed and living in Samoa (**include transit**).

(ii) Visitors also include Samoan citizens whose country of usual residence are country abroad.

(iii) **Scandinavia**- refers to countries of Norway, Sweden, Finland and Denmark.

(iv) **Benelux:** - refers to countries of Belgium, Netherlands and Luxembourg.

(v) **Exclude Cruise Liner Passengers.**

Table 4: Total Visitors by Usual Residence and Purpose of Visit, January 2014 ¹

Usual Residence	Purpose of Visit								
	Total	Percentage ²	Holiday/ Vacation	Business/ Conference	Visit Friends/ Relatives	Sports	Transit	Others	Not Stated
OCEANIA	8,619	86.2	2,218	680	3,886	29	692	356	758
American Samoa	1,256	12.6	129	65	424	6	287	35	310
Fiji	297	3.0	26	69	45	0	69	44	44
Cook Island	16	0.2	5	1	5	0	4	0	1
Other Pacific Is	278	2.8	21	15	41	0	92	60	49
New Zealand	4,307	43.1	1,244	354	2,145	16	178	141	229
Australia	2,465	24.6	793	176	1,226	7	62	76	125
EUROPE	297	3.0	207	26	26	2	10	9	17
United Kingdom	93	0.9	57	19	9	1	2	4	1
Scandinavia	27	0.3	22	1	0	0	1	1	2
Benelux	7	0.1	4	0	1	0	1	0	1
Germany	72	0.7	66	2	3	0	1	0	0
Other Europe	98	1.0	58	4	13	1	5	4	13
AMERICA	644	6.4	259	57	150	7	73	22	76
U.S.A.	616	6.2	238	56	147	7	72	22	74
Canada	28	0.3	21	1	3	0	1	0	2
ASIA	370	3.7	44	48	26	0	191	14	47
Japan	45	0.4	10	17	4	0	2	4	8
China	157	1.6	18	13	9	0	94	4	19
Korea	6	0.1	1	1	0	0	3	1	0
Other Asia	162	1.6	15	17	13	0	92	5	20
OTHER COUNTRIES	72	0.7	18	5	7	0	25	1	16
TOTAL	10,002	100	2,746	816	4,095	38	991	402	914
Percentage Distribution ²	100		27.5	8.2	40.9	0.4	9.9	4.0	9.1

Source: Ministry of the Prime Minister and Cabinet- Immigration Division; Ministry for Revenue- Customs Division and Samoa Bureau of Statistics.

Note : Sports was re-introduced again in the Purpose of Visit Category as of August 2008.

1: Provisional figures

2: Figures are subject to rounding errors

Table 5: Total Arrivals by Carrier and Purpose of Entry, January 2014 ¹

Carrier	Total	Purpose of Entry				
		Returning Residents	Percentage ²	Visitors	Percentage ²	
Total	15,049	100%	5,047	33.5	10,002	66.5
AIR						
Virgin Samoa ³	5,324	35.4	1887	12.5	3,437	22.8
Polynesian	2,882	19.2	998	6.6	1,884	12.5
Inter Island	357	2.4	90	0.6	267	1.8
Air New Zealand	4,671	31.0	1576	10.5	3,095	20.6
Fiji Airways ⁴	1,273	8.5	315	2.1	958	6.4
Other Air Carrier	208	1.4	2	0.0	206	1.4
SEA						
Lady Naomi	182	1.2	136	0.9	46	0.3
Yacht	1	0.0	0	0.0	1	0.0
Other Sea Carrier	151	1.0	43	0.3	108	0.7

Source: Ministry of the Prime Minister and Cabinet- Immigration Division; Ministry for Revenue- Customs Division and Samoa Bureau of Statistics.

Note: Total visitors include transit.

- 1: Provisional figures
- 2: Figures are subject to rounding errors
- 3: Polynesian Blue is now called Virgin Samoa
- 4: Air Pacific is now called Fiji Airways

Table 6: Visitors by Duration of Stay and Place of Stay, January 2014 ¹

Duration of Stay	Place of Stay			
	Total	Hotel/Motel	Private	Not Stated
Total	9,011	1,846	6,951	214
1day	124	47	69	8
2days	428	315	111	2
3days	216	76	138	2
4days	304	127	166	11
5days	339	127	206	6
6days	245	143	100	2
7days	730	243	473	14
8-14days	2542	466	2034	42
15-30days	2333	164	2123	46
31-60days	267	44	212	11
61-90days	93	5	85	3
91-180days	82	2	79	1
181-365days	79	6	69	4
Not Stated	1229	81	1086	62
Percentage Distribution ²	100	20.5	77.1	2.4

Source: Ministry of the Prime Minister and Cabinet- Immigration Division,
Ministry for Revenue- Customs Division and Samoa Bureau of Statistics.

Note: Visitors here, exclude transit.

1: Provisional figures

2: Figures are subject to rounding errors

Table 1: Monthly Arrival and Departure by Mode of Tavel and Net Migration, 2004 - 2013.

Period	Visitors Arrivals			Total Arrivals			Total Departures			Net Migration
	Air	Sea	Total	Air	Sea	Total	Air	Sea	Total	
2004	93,946	4,209	98,155	129,517	11,864	141,381	131,277	12,303	143,580	-2,199
2005	98,544	3,263	101,807	132,200	10,557	142,757	135,008	10,936	145,944	-3,187
2006	112,411	3,471	115,882	147,807	9,349	157,156	147,991	9,489	157,480	-324
2007	118,653	3,703	122,356	150,584	7,635	158,219	158,099	8,578	166,677	-8,458
2008	118,459	3,743	122,202	151,883	8,628	160,511	161,482	9,908	171,390	-10,879
2009	127,327	1,978	129,305	161,816	5,095	166,911	156,319	6,069	162,388	4,523
2010	126,970	2,530	129,500	162,052	5,539	167,591	164,426	6,326	170,752	-3,161
2011	124,706	2,898	127,604	159,660	5,738	165,398	163,605	6,216	169,821	-4,423
2012	131,945	2,749	134,694	167,211	5,509	172,720	167,842	6,297	174,139	-1,419
2013	122,172	2,505	124,677	157,542	5,335	162,877	148,151	5,381	153,532	...
2014	9,847	155	10,002	14,715	334	15,049
2011										
January	9,319	399	9,718	13,382	626	14,008	19,405	610	20,015	-6,007
February	7,030	243	7,273	9,387	443	9,830	11,671	592	12,263	-2,433
March	8,623	152	8,775	11,241	371	11,612	12,214	535	12,749	-1,137
April	9,733	109	9,842	12,473	323	12,796	11,993	363	12,356	440
May	9,234	214	9,448	12,543	444	12,987	12,718	394	13,112	-125
June	11,125	267	11,392	14,192	632	14,824	12,437	752	13,189	1,635
July	14,009	260	14,269	17,124	525	17,649	17,000	374	17,374	275
August	10,899	219	11,118	13,383	372	13,755	14,332	638	14,970	-1,215
September	9,570	187	9,757	12,382	458	12,840	12,452	504	12,956	-116
October	9,868	150	10,018	12,646	298	12,944	13,028	353	13,381	-437
November	10,224	302	10,526	12,946	508	13,454	11,918	566	12,484	970
December	15,072	396	15,468	17,961	738	18,699	14,437	535	14,972	3,727
2012										
January	9,480	133	9,613	13,878	267	14,145	18,055	554	18,609	-4,464
February	7,033	212	7,245	9,453	369	9,822	12,300	449	12,749	-2,927
March	8,926	152	9,078	11,504	359	11,863	11,034	374	11,408	455
April	10,095	104	10,199	13,157	820	13,977	12,989	1,012	14,001	-24
May	11,908	502	12,410	15,264	730	15,994	11,514	485	11,999	3,995
June	13,883	379	14,262	16,747	535	17,282	16,316	849	17,165	117
July	14,913	135	15,048	17,705	261	17,966	18,995	319	19,314	-1,348
August	10,228	205	10,433	12,509	334	12,843	13,921	453	14,374	-1,531
September	10,749	267	11,016	13,653	422	14,075	13,743	329	14,072	3
October	9,604	97	9,701	12,378	330	12,708	13,764	460	14,224	-1,516
November	9,190	266	9,456	11,943	539	12,482	11,369	395	11,764	718
December	15,936	297	16,233	19,020	543	19,563	13,842	618	14,460	5,103
2013										
January	8,821	259	9,080	12,952	334	13,286	16,397	649	17,046	-3,760
February	6,386	161	6,547	8,756	407	9,163	12,210	515	12,725	-3,562
March	8,086	160	8,246	10,776	399	11,175	9,612	438	10,050	1,125
April	9,351	165	9,516	12,325	453	12,778	12,576	653	13,229	-451
May	9,216	190	9,406	12,496	375	12,871	11,492	606	12,098	773
June	12,027	296	12,323	14,964	537	15,501	13,660	460	14,120	1,381
July	13,068	207	13,275	15,901	593	16,494	16,442	464	16,906	-412
August	11,380	175	11,555	14,046	535	14,581	15,063	536	15,599	-1,018
September	11,016	211	11,227	13,741	293	14,034	13,844	349	14,193	-159
October	9,828	209	10,037	12,512	361	12,873	14,773	158	14,931	-2,058
November	8,768	190	8,958	11,753	453	12,206	12,082	553	12,635	-502
December	14,225	282	14,507	17,320	595	17,915
2014										
January /1	9,847	155	10,002	14,715	334	15,049

Source : Ministry of the Prime Minister and Cabinet- Immigration Division; Ministry for Revenue- Customs Division and Samoa Bureau of Statistics.

1: Provisional figures

... Denote not yet available

■ : Revised Figures

Table 2: Total Arrivals by Age, Purpose of Entry and Gender, January 2014 ¹

Age	Purpose of Entry																	
	Total			Visitors			Returning Residents			Transit			Temporary Residents			Others		
	Total	Male	Female	Total	Male	Female	Total	Male	Female	Total	Male	Female	Total	Male	Female	Total	Male	Female
Total	15,049	7,757	7,292	8,403	4,198	4,205	5,047	2,553	2,494	991	648	343	407	234	173	201	124	77
0 - 4	816	426	390	464	238	226	308	159	149	26	18	8	16	9	7	2	2	0
5 - 9	852	438	414	457	229	228	342	177	165	39	23	16	13	8	5	1	1	0
10 - 14	995	471	524	503	244	259	418	192	226	47	23	24	17	8	9	10	4	6
15 - 19	1,113	503	610	548	231	317	476	214	262	57	36	21	16	12	4	16	10	6
20 - 24	1,271	595	676	699	301	398	423	206	217	97	58	39	33	21	12	19	9	10
25 - 29	1,194	636	558	616	282	334	405	229	176	104	74	30	41	26	15	28	25	3
30 - 34	1,075	540	535	599	277	322	316	161	155	99	72	27	45	22	23	16	8	8
35 - 39	1,057	561	496	607	319	288	323	160	163	78	56	22	37	19	18	12	7	5
40 - 44	1,201	660	541	644	345	299	379	195	184	116	80	36	42	27	15	20	13	7
45 - 49	1,218	656	562	728	379	349	337	186	151	99	62	37	40	19	21	14	10	4
50 - 54	1,221	660	561	712	376	336	380	199	181	88	60	28	25	16	9	16	9	7
55 - 59	1,032	554	478	624	341	283	316	160	156	47	27	20	26	16	10	19	10	9
60 - 64	847	431	416	508	261	247	254	119	135	46	28	18	23	13	10	16	10	6
65 - 69	586	333	253	356	201	155	171	96	75	31	21	10	19	11	8	9	4	5
70 - 74	309	170	139	189	103	86	104	56	48	8	6	2	8	5	3	0	0	0
75 +	262	123	139	149	71	78	95	44	51	9	4	5	6	2	4	3	2	1
% Distribution ²	100	51.5	48.5	55.8	27.9	27.9	33.5	17.0	16.6	6.6	4.3	2.3	2.7	1.6	1.1	1.3	0.8	0.5

Source: Ministry of the Prime Minister and Cabinet - Immigration Division; Ministry for Revenue - Customs Division and Samoa Bureau of Statistics.

1: Provisional figures

2: Figures are subject to rounding errors

Note: The Purpose of Entry categories of Temporary Residents and Others were introduced as a result of the introduction of the new arrival card

Table 3: Total Visitors Arrivals by Country of Usual Residents and Mode of Travel, January 2014 ¹

Country of Usual Residence	Mode of Travel			Percentage (%) ²
	Air	Sea	Total	
OCEANIA	8,499	120	8,619	86.2
American Samoa	1,218	38	1,256	12.6
Fiji	296	1	297	3.0
Cook Island	16	0	16	0.2
Other Pacific Is	230	48	278	2.8
New Zealand	4,278	29	4,307	43.1
Australia	2,461	4	2,465	24.6
EUROPE	297	0	297	3.0
United Kingdom	93	0	93	0.9
Scandinavia	27	0	27	0.3
Benelux	7	0	7	0.1
Germany	72	0	72	0.7
Other Europe	98	0	98	1.0
AMERICA	610	34	644	6.4
U.S.A	582	34	616	6.2
Canada	28	0	28	0.3
ASIA	369	1	370	3.7
Japan	45	0	45	0.4
China	157	0	157	1.6
Korea	6	0	6	0.1
Other Asia	161	1	162	1.6
OTHERS	72	0	72	0.7
TOTAL	9,847	155	10,002	100%
PERCENTAGE DISTRIBUTION	98.5	1.5%	100%	

Source: Ministry of the Prime Minister and Cabinet- Immigration Division; Ministry for Revenue- Customs Division and Samoa Bureau of Statistics.

1: Provisional figures.

2: Figures are subject to rounding errors

Note: (i) Visitors refer to all person visiting Samoa other than returning residents and also expatriates who are employed and living in Samoa (**include transit**).

(ii) Visitors also include Samoan citizens whose country of usual residence are country abroad.

(iii) **Scandinavia**- refers to countries of Norway, Sweden, Finland and Denmark.

(iv) **Benelux:** - refers to countries of Belgium, Netherlands and Luxembourg.

(v) **Exclude Cruise Liner Passengers.**

Table 4: Total Visitors by Usual Residence and Purpose of Visit, January 2014 ¹

Usual Residence	Purpose of Visit								
	Total	Percentage ²	Holiday/ Vacation	Business/ Conference	Visit Friends/ Relatives	Sports	Transit	Others	Not Stated
OCEANIA	8,619	86.2	2,218	680	3,886	29	692	356	758
American Samoa	1,256	12.6	129	65	424	6	287	35	310
Fiji	297	3.0	26	69	45	0	69	44	44
Cook Island	16	0.2	5	1	5	0	4	0	1
Other Pacific Is	278	2.8	21	15	41	0	92	60	49
New Zealand	4,307	43.1	1,244	354	2,145	16	178	141	229
Australia	2,465	24.6	793	176	1,226	7	62	76	125
EUROPE	297	3.0	207	26	26	2	10	9	17
United Kingdom	93	0.9	57	19	9	1	2	4	1
Scandinavia	27	0.3	22	1	0	0	1	1	2
Benelux	7	0.1	4	0	1	0	1	0	1
Germany	72	0.7	66	2	3	0	1	0	0
Other Europe	98	1.0	58	4	13	1	5	4	13
AMERICA	644	6.4	259	57	150	7	73	22	76
U.S.A.	616	6.2	238	56	147	7	72	22	74
Canada	28	0.3	21	1	3	0	1	0	2
ASIA	370	3.7	44	48	26	0	191	14	47
Japan	45	0.4	10	17	4	0	2	4	8
China	157	1.6	18	13	9	0	94	4	19
Korea	6	0.1	1	1	0	0	3	1	0
Other Asia	162	1.6	15	17	13	0	92	5	20
OTHER COUNTRIES	72	0.7	18	5	7	0	25	1	16
TOTAL	10,002	100	2,746	816	4,095	38	991	402	914
Percentage Distribution ²	100		27.5	8.2	40.9	0.4	9.9	4.0	9.1

Source: Ministry of the Prime Minister and Cabinet- Immigration Division; Ministry for Revenue- Customs Division and Samoa Bureau of Statistics.

Note : Sports was re-introduced again in the Purpose of Visit Category as of August 2008.

1: Provisional figures

2: Figures are subject to rounding errors

Table 5: Total Arrivals by Carrier and Purpose of Entry, January 2014 ¹

Carrier	Total	Purpose of Entry				
		Returning Residents	Percentage ²	Visitors	Percentage ²	
Total	15,049	100%	5,047	33.5	10,002	66.5
AIR						
Virgin Samoa ³	5,324	35.4	1887	12.5	3,437	22.8
Polynesian	2,882	19.2	998	6.6	1,884	12.5
Inter Island	357	2.4	90	0.6	267	1.8
Air New Zealand	4,671	31.0	1576	10.5	3,095	20.6
Fiji Airways ⁴	1,273	8.5	315	2.1	958	6.4
Other Air Carrier	208	1.4	2	0.0	206	1.4
SEA						
Lady Naomi	182	1.2	136	0.9	46	0.3
Yacht	1	0.0	0	0.0	1	0.0
Other Sea Carrier	151	1.0	43	0.3	108	0.7

Source: Ministry of the Prime Minister and Cabinet- Immigration Division; Ministry for Revenue- Customs Division and Samoa Bureau of Statistics.

Note: Total visitors include transit.

- 1: Provisional figures
- 2: Figures are subject to rounding errors
- 3: Polynesian Blue is now called Virgin Samoa
- 4: Air Pacific is now called Fiji Airways

Table 6: Visitors by Duration of Stay and Place of Stay, January 2014 ¹

Duration of Stay	Place of Stay			
	Total	Hotel/Motel	Private	Not Stated
Total	9,011	1,846	6,951	214
1day	124	47	69	8
2days	428	315	111	2
3days	216	76	138	2
4days	304	127	166	11
5days	339	127	206	6
6days	245	143	100	2
7days	730	243	473	14
8-14days	2542	466	2034	42
15-30days	2333	164	2123	46
31-60days	267	44	212	11
61-90days	93	5	85	3
91-180days	82	2	79	1
181-365days	79	6	69	4
Not Stated	1229	81	1086	62
Percentage Distribution ²	100	20.5	77.1	2.4

Source: Ministry of the Prime Minister and Cabinet- Immigration Division,
Ministry for Revenue- Customs Division and Samoa Bureau of Statistics.

Note: Visitors here, exclude transit.

1: Provisional figures

2: Figures are subject to rounding errors

Table 1: Monthly Arrival and Departure by Mode of Tavel and Net Migration, 2004 - 2013.

Period	Visitors Arrivals			Total Arrivals			Total Departures			Net Migration
	Air	Sea	Total	Air	Sea	Total	Air	Sea	Total	
2004	93,946	4,209	98,155	129,517	11,864	141,381	131,277	12,303	143,580	-2,199
2005	98,544	3,263	101,807	132,200	10,557	142,757	135,008	10,936	145,944	-3,187
2006	112,411	3,471	115,882	147,807	9,349	157,156	147,991	9,489	157,480	-324
2007	118,653	3,703	122,356	150,584	7,635	158,219	158,099	8,578	166,677	-8,458
2008	118,459	3,743	122,202	151,883	8,628	160,511	161,482	9,908	171,390	-10,879
2009	127,327	1,978	129,305	161,816	5,095	166,911	156,319	6,069	162,388	4,523
2010	126,970	2,530	129,500	162,052	5,539	167,591	164,426	6,326	170,752	-3,161
2011	124,706	2,898	127,604	159,660	5,738	165,398	163,605	6,216	169,821	-4,423
2012	131,945	2,749	134,694	167,211	5,509	172,720	167,842	6,297	174,139	-1,419
2013	122,172	2,505	124,677	157,542	5,335	162,877	148,151	5,381	153,532	...
2014	9,847	155	10,002	14,715	334	15,049
2011										
January	9,319	399	9,718	13,382	626	14,008	19,405	610	20,015	-6,007
February	7,030	243	7,273	9,387	443	9,830	11,671	592	12,263	-2,433
March	8,623	152	8,775	11,241	371	11,612	12,214	535	12,749	-1,137
April	9,733	109	9,842	12,473	323	12,796	11,993	363	12,356	440
May	9,234	214	9,448	12,543	444	12,987	12,718	394	13,112	-125
June	11,125	267	11,392	14,192	632	14,824	12,437	752	13,189	1,635
July	14,009	260	14,269	17,124	525	17,649	17,000	374	17,374	275
August	10,899	219	11,118	13,383	372	13,755	14,332	638	14,970	-1,215
September	9,570	187	9,757	12,382	458	12,840	12,452	504	12,956	-116
October	9,868	150	10,018	12,646	298	12,944	13,028	353	13,381	-437
November	10,224	302	10,526	12,946	508	13,454	11,918	566	12,484	970
December	15,072	396	15,468	17,961	738	18,699	14,437	535	14,972	3,727
2012										
January	9,480	133	9,613	13,878	267	14,145	18,055	554	18,609	-4,464
February	7,033	212	7,245	9,453	369	9,822	12,300	449	12,749	-2,927
March	8,926	152	9,078	11,504	359	11,863	11,034	374	11,408	455
April	10,095	104	10,199	13,157	820	13,977	12,989	1,012	14,001	-24
May	11,908	502	12,410	15,264	730	15,994	11,514	485	11,999	3,995
June	13,883	379	14,262	16,747	535	17,282	16,316	849	17,165	117
July	14,913	135	15,048	17,705	261	17,966	18,995	319	19,314	-1,348
August	10,228	205	10,433	12,509	334	12,843	13,921	453	14,374	-1,531
September	10,749	267	11,016	13,653	422	14,075	13,743	329	14,072	3
October	9,604	97	9,701	12,378	330	12,708	13,764	460	14,224	-1,516
November	9,190	266	9,456	11,943	539	12,482	11,369	395	11,764	718
December	15,936	297	16,233	19,020	543	19,563	13,842	618	14,460	5,103
2013										
January	8,821	259	9,080	12,952	334	13,286	16,397	649	17,046	-3,760
February	6,386	161	6,547	8,756	407	9,163	12,210	515	12,725	-3,562
March	8,086	160	8,246	10,776	399	11,175	9,612	438	10,050	1,125
April	9,351	165	9,516	12,325	453	12,778	12,576	653	13,229	-451
May	9,216	190	9,406	12,496	375	12,871	11,492	606	12,098	773
June	12,027	296	12,323	14,964	537	15,501	13,660	460	14,120	1,381
July	13,068	207	13,275	15,901	593	16,494	16,442	464	16,906	-412
August	11,380	175	11,555	14,046	535	14,581	15,063	536	15,599	-1,018
September	11,016	211	11,227	13,741	293	14,034	13,844	349	14,193	-159
October	9,828	209	10,037	12,512	361	12,873	14,773	158	14,931	-2,058
November	8,768	190	8,958	11,753	453	12,206	12,082	553	12,635	-502
December	14,225	282	14,507	17,320	595	17,915
2014										
January /1	9,847	155	10,002	14,715	334	15,049

Source : Ministry of the Prime Minister and Cabinet- Immigration Division; Ministry for Revenue- Customs Division and Samoa Bureau of Statistics.

1: Provisional figures

... Denote not yet available

■ : Revised Figures

Table 2: Total Arrivals by Age, Purpose of Entry and Gender, January 2014 ¹

Age	Purpose of Entry																	
	Total			Visitors			Returning Residents			Transit			Temporary Residents			Others		
	Total	Male	Female	Total	Male	Female	Total	Male	Female	Total	Male	Female	Total	Male	Female	Total	Male	Female
Total	15,049	7,757	7,292	8,403	4,198	4,205	5,047	2,553	2,494	991	648	343	407	234	173	201	124	77
0 - 4	816	426	390	464	238	226	308	159	149	26	18	8	16	9	7	2	2	0
5 - 9	852	438	414	457	229	228	342	177	165	39	23	16	13	8	5	1	1	0
10 - 14	995	471	524	503	244	259	418	192	226	47	23	24	17	8	9	10	4	6
15 - 19	1,113	503	610	548	231	317	476	214	262	57	36	21	16	12	4	16	10	6
20 - 24	1,271	595	676	699	301	398	423	206	217	97	58	39	33	21	12	19	9	10
25 - 29	1,194	636	558	616	282	334	405	229	176	104	74	30	41	26	15	28	25	3
30 - 34	1,075	540	535	599	277	322	316	161	155	99	72	27	45	22	23	16	8	8
35 - 39	1,057	561	496	607	319	288	323	160	163	78	56	22	37	19	18	12	7	5
40 - 44	1,201	660	541	644	345	299	379	195	184	116	80	36	42	27	15	20	13	7
45 - 49	1,218	656	562	728	379	349	337	186	151	99	62	37	40	19	21	14	10	4
50 - 54	1,221	660	561	712	376	336	380	199	181	88	60	28	25	16	9	16	9	7
55 - 59	1,032	554	478	624	341	283	316	160	156	47	27	20	26	16	10	19	10	9
60 - 64	847	431	416	508	261	247	254	119	135	46	28	18	23	13	10	16	10	6
65 - 69	586	333	253	356	201	155	171	96	75	31	21	10	19	11	8	9	4	5
70 - 74	309	170	139	189	103	86	104	56	48	8	6	2	8	5	3	0	0	0
75 +	262	123	139	149	71	78	95	44	51	9	4	5	6	2	4	3	2	1
% Distribution ²	100	51.5	48.5	55.8	27.9	27.9	33.5	17.0	16.6	6.6	4.3	2.3	2.7	1.6	1.1	1.3	0.8	0.5

Source: Ministry of the Prime Minister and Cabinet - Immigration Division; Ministry for Revenue - Customs Division and Samoa Bureau of Statistics.

1: Provisional figures

2: Figures are subject to rounding errors

Note: The Purpose of Entry categories of Temporary Residents and Others were introduced as a result of the introduction of the new arrival card

Table 3: Total Visitors Arrivals by Country of Usual Residents and Mode of Travel, January 2014 ¹

Country of Usual Residence	Mode of Travel			Percentage (%) ²
	Air	Sea	Total	
OCEANIA	8,499	120	8,619	86.2
American Samoa	1,218	38	1,256	12.6
Fiji	296	1	297	3.0
Cook Island	16	0	16	0.2
Other Pacific Is	230	48	278	2.8
New Zealand	4,278	29	4,307	43.1
Australia	2,461	4	2,465	24.6
EUROPE	297	0	297	3.0
United Kingdom	93	0	93	0.9
Scandinavia	27	0	27	0.3
Benelux	7	0	7	0.1
Germany	72	0	72	0.7
Other Europe	98	0	98	1.0
AMERICA	610	34	644	6.4
U.S.A	582	34	616	6.2
Canada	28	0	28	0.3
ASIA	369	1	370	3.7
Japan	45	0	45	0.4
China	157	0	157	1.6
Korea	6	0	6	0.1
Other Asia	161	1	162	1.6
OTHERS	72	0	72	0.7
TOTAL	9,847	155	10,002	100%
PERCENTAGE DISTRIBUTION	98.5	1.5%	100%	

Source: Ministry of the Prime Minister and Cabinet- Immigration Division; Ministry for Revenue- Customs Division and Samoa Bureau of Statistics.

1: Provisional figures.

2: Figures are subject to rounding errors

Note: (i) Visitors refer to all person visiting Samoa other than returning residents and also expatriates who are employed and living in Samoa (**include transit**).

(ii) Visitors also include Samoan citizens whose country of usual residence are country abroad.

(iii) **Scandinavia**- refers to countries of Norway, Sweden, Finland and Denmark.

(iv) **Benelux:** - refers to countries of Belgium, Netherlands and Luxembourg.

(v) **Exclude Cruise Liner Passengers.**

Table 4: Total Visitors by Usual Residence and Purpose of Visit, January 2014 ¹

Usual Residence	Purpose of Visit								
	Total	Percentage ²	Holiday/ Vacation	Business/ Conference	Visit Friends/ Relatives	Sports	Transit	Others	Not Stated
OCEANIA	8,619	86.2	2,218	680	3,886	29	692	356	758
American Samoa	1,256	12.6	129	65	424	6	287	35	310
Fiji	297	3.0	26	69	45	0	69	44	44
Cook Island	16	0.2	5	1	5	0	4	0	1
Other Pacific Is	278	2.8	21	15	41	0	92	60	49
New Zealand	4,307	43.1	1,244	354	2,145	16	178	141	229
Australia	2,465	24.6	793	176	1,226	7	62	76	125
EUROPE	297	3.0	207	26	26	2	10	9	17
United Kingdom	93	0.9	57	19	9	1	2	4	1
Scandinavia	27	0.3	22	1	0	0	1	1	2
Benelux	7	0.1	4	0	1	0	1	0	1
Germany	72	0.7	66	2	3	0	1	0	0
Other Europe	98	1.0	58	4	13	1	5	4	13
AMERICA	644	6.4	259	57	150	7	73	22	76
U.S.A.	616	6.2	238	56	147	7	72	22	74
Canada	28	0.3	21	1	3	0	1	0	2
ASIA	370	3.7	44	48	26	0	191	14	47
Japan	45	0.4	10	17	4	0	2	4	8
China	157	1.6	18	13	9	0	94	4	19
Korea	6	0.1	1	1	0	0	3	1	0
Other Asia	162	1.6	15	17	13	0	92	5	20
OTHER COUNTRIES	72	0.7	18	5	7	0	25	1	16
TOTAL	10,002	100	2,746	816	4,095	38	991	402	914
Percentage Distribution ²	100		27.5	8.2	40.9	0.4	9.9	4.0	9.1

Source: Ministry of the Prime Minister and Cabinet- Immigration Division; Ministry for Revenue- Customs Division and Samoa Bureau of Statistics.

Note : Sports was re-introduced again in the Purpose of Visit Category as of August 2008.

1: Provisional figures

2: Figures are subject to rounding errors

Table 5: Total Arrivals by Carrier and Purpose of Entry, January 2014 ¹

Carrier	Total	Purpose of Entry				
		Returning Residents	Percentage ²	Visitors	Percentage ²	
Total	15,049	100%	5,047	33.5	10,002	66.5
AIR						
Virgin Samoa ³	5,324	35.4	1887	12.5	3,437	22.8
Polynesian	2,882	19.2	998	6.6	1,884	12.5
Inter Island	357	2.4	90	0.6	267	1.8
Air New Zealand	4,671	31.0	1576	10.5	3,095	20.6
Fiji Airways ⁴	1,273	8.5	315	2.1	958	6.4
Other Air Carrier	208	1.4	2	0.0	206	1.4
SEA						
Lady Naomi	182	1.2	136	0.9	46	0.3
Yacht	1	0.0	0	0.0	1	0.0
Other Sea Carrier	151	1.0	43	0.3	108	0.7

Source: Ministry of the Prime Minister and Cabinet- Immigration Division; Ministry for Revenue- Customs Division and Samoa Bureau of Statistics.

Note: Total visitors include transit.

- 1: Provisional figures
- 2: Figures are subject to rounding errors
- 3: Polynesian Blue is now called Virgin Samoa
- 4: Air Pacific is now called Fiji Airways

Table 6: Visitors by Duration of Stay and Place of Stay, January 2014 ¹

Duration of Stay	Place of Stay			
	Total	Hotel/Motel	Private	Not Stated
Total	9,011	1,846	6,951	214
1day	124	47	69	8
2days	428	315	111	2
3days	216	76	138	2
4days	304	127	166	11
5days	339	127	206	6
6days	245	143	100	2
7days	730	243	473	14
8-14days	2542	466	2034	42
15-30days	2333	164	2123	46
31-60days	267	44	212	11
61-90days	93	5	85	3
91-180days	82	2	79	1
181-365days	79	6	69	4
Not Stated	1229	81	1086	62
Percentage Distribution ²	100	20.5	77.1	2.4

Source: Ministry of the Prime Minister and Cabinet- Immigration Division,
Ministry for Revenue- Customs Division and Samoa Bureau of Statistics.

Note: Visitors here, exclude transit.

1: Provisional figures

2: Figures are subject to rounding errors

Table 1: Monthly Arrival and Departure by Mode of Tavel and Net Migration, 2004 - 2013.

Period	Visitors Arrivals			Total Arrivals			Total Departures			Net Migration
	Air	Sea	Total	Air	Sea	Total	Air	Sea	Total	
2004	93,946	4,209	98,155	129,517	11,864	141,381	131,277	12,303	143,580	-2,199
2005	98,544	3,263	101,807	132,200	10,557	142,757	135,008	10,936	145,944	-3,187
2006	112,411	3,471	115,882	147,807	9,349	157,156	147,991	9,489	157,480	-324
2007	118,653	3,703	122,356	150,584	7,635	158,219	158,099	8,578	166,677	-8,458
2008	118,459	3,743	122,202	151,883	8,628	160,511	161,482	9,908	171,390	-10,879
2009	127,327	1,978	129,305	161,816	5,095	166,911	156,319	6,069	162,388	4,523
2010	126,970	2,530	129,500	162,052	5,539	167,591	164,426	6,326	170,752	-3,161
2011	124,706	2,898	127,604	159,660	5,738	165,398	163,605	6,216	169,821	-4,423
2012	131,945	2,749	134,694	167,211	5,509	172,720	167,842	6,297	174,139	-1,419
2013	122,172	2,505	124,677	157,542	5,335	162,877	148,151	5,381	153,532	...
2014	9,847	155	10,002	14,715	334	15,049
2011										
January	9,319	399	9,718	13,382	626	14,008	19,405	610	20,015	-6,007
February	7,030	243	7,273	9,387	443	9,830	11,671	592	12,263	-2,433
March	8,623	152	8,775	11,241	371	11,612	12,214	535	12,749	-1,137
April	9,733	109	9,842	12,473	323	12,796	11,993	363	12,356	440
May	9,234	214	9,448	12,543	444	12,987	12,718	394	13,112	-125
June	11,125	267	11,392	14,192	632	14,824	12,437	752	13,189	1,635
July	14,009	260	14,269	17,124	525	17,649	17,000	374	17,374	275
August	10,899	219	11,118	13,383	372	13,755	14,332	638	14,970	-1,215
September	9,570	187	9,757	12,382	458	12,840	12,452	504	12,956	-116
October	9,868	150	10,018	12,646	298	12,944	13,028	353	13,381	-437
November	10,224	302	10,526	12,946	508	13,454	11,918	566	12,484	970
December	15,072	396	15,468	17,961	738	18,699	14,437	535	14,972	3,727
2012										
January	9,480	133	9,613	13,878	267	14,145	18,055	554	18,609	-4,464
February	7,033	212	7,245	9,453	369	9,822	12,300	449	12,749	-2,927
March	8,926	152	9,078	11,504	359	11,863	11,034	374	11,408	455
April	10,095	104	10,199	13,157	820	13,977	12,989	1,012	14,001	-24
May	11,908	502	12,410	15,264	730	15,994	11,514	485	11,999	3,995
June	13,883	379	14,262	16,747	535	17,282	16,316	849	17,165	117
July	14,913	135	15,048	17,705	261	17,966	18,995	319	19,314	-1,348
August	10,228	205	10,433	12,509	334	12,843	13,921	453	14,374	-1,531
September	10,749	267	11,016	13,653	422	14,075	13,743	329	14,072	3
October	9,604	97	9,701	12,378	330	12,708	13,764	460	14,224	-1,516
November	9,190	266	9,456	11,943	539	12,482	11,369	395	11,764	718
December	15,936	297	16,233	19,020	543	19,563	13,842	618	14,460	5,103
2013										
January	8,821	259	9,080	12,952	334	13,286	16,397	649	17,046	-3,760
February	6,386	161	6,547	8,756	407	9,163	12,210	515	12,725	-3,562
March	8,086	160	8,246	10,776	399	11,175	9,612	438	10,050	1,125
April	9,351	165	9,516	12,325	453	12,778	12,576	653	13,229	-451
May	9,216	190	9,406	12,496	375	12,871	11,492	606	12,098	773
June	12,027	296	12,323	14,964	537	15,501	13,660	460	14,120	1,381
July	13,068	207	13,275	15,901	593	16,494	16,442	464	16,906	-412
August	11,380	175	11,555	14,046	535	14,581	15,063	536	15,599	-1,018
September	11,016	211	11,227	13,741	293	14,034	13,844	349	14,193	-159
October	9,828	209	10,037	12,512	361	12,873	14,773	158	14,931	-2,058
November	8,768	190	8,958	11,753	453	12,206	12,082	553	12,635	-502
December	14,225	282	14,507	17,320	595	17,915
2014										
January /1	9,847	155	10,002	14,715	334	15,049

Source : Ministry of the Prime Minister and Cabinet- Immigration Division; Ministry for Revenue- Customs Division and Samoa Bureau of Statistics.

1: Provisional figures

... Denote not yet available

■ : Revised Figures

Table 2: Total Arrivals by Age, Purpose of Entry and Gender, January 2014 ¹

Age	Purpose of Entry																	
	Total			Visitors			Returning Residents			Transit			Temporary Residents			Others		
	Total	Male	Female	Total	Male	Female	Total	Male	Female	Total	Male	Female	Total	Male	Female	Total	Male	Female
Total	15,049	7,757	7,292	8,403	4,198	4,205	5,047	2,553	2,494	991	648	343	407	234	173	201	124	77
0 - 4	816	426	390	464	238	226	308	159	149	26	18	8	16	9	7	2	2	0
5 - 9	852	438	414	457	229	228	342	177	165	39	23	16	13	8	5	1	1	0
10 - 14	995	471	524	503	244	259	418	192	226	47	23	24	17	8	9	10	4	6
15 - 19	1,113	503	610	548	231	317	476	214	262	57	36	21	16	12	4	16	10	6
20 - 24	1,271	595	676	699	301	398	423	206	217	97	58	39	33	21	12	19	9	10
25 - 29	1,194	636	558	616	282	334	405	229	176	104	74	30	41	26	15	28	25	3
30 - 34	1,075	540	535	599	277	322	316	161	155	99	72	27	45	22	23	16	8	8
35 - 39	1,057	561	496	607	319	288	323	160	163	78	56	22	37	19	18	12	7	5
40 - 44	1,201	660	541	644	345	299	379	195	184	116	80	36	42	27	15	20	13	7
45 - 49	1,218	656	562	728	379	349	337	186	151	99	62	37	40	19	21	14	10	4
50 - 54	1,221	660	561	712	376	336	380	199	181	88	60	28	25	16	9	16	9	7
55 - 59	1,032	554	478	624	341	283	316	160	156	47	27	20	26	16	10	19	10	9
60 - 64	847	431	416	508	261	247	254	119	135	46	28	18	23	13	10	16	10	6
65 - 69	586	333	253	356	201	155	171	96	75	31	21	10	19	11	8	9	4	5
70 - 74	309	170	139	189	103	86	104	56	48	8	6	2	8	5	3	0	0	0
75 +	262	123	139	149	71	78	95	44	51	9	4	5	6	2	4	3	2	1
% Distribution ²	100	51.5	48.5	55.8	27.9	27.9	33.5	17.0	16.6	6.6	4.3	2.3	2.7	1.6	1.1	1.3	0.8	0.5

Source: Ministry of the Prime Minister and Cabinet - Immigration Division; Ministry for Revenue - Customs Division and Samoa Bureau of Statistics.

1: Provisional figures

2: Figures are subject to rounding errors

Note: The Purpose of Entry categories of Temporary Residents and Others were introduced as a result of the introduction of the new arrival card

Table 3: Total Visitors Arrivals by Country of Usual Residents and Mode of Travel, January 2014 ¹

Country of Usual Residence	Mode of Travel			Percentage (%) ²
	Air	Sea	Total	
OCEANIA	8,499	120	8,619	86.2
American Samoa	1,218	38	1,256	12.6
Fiji	296	1	297	3.0
Cook Island	16	0	16	0.2
Other Pacific Is	230	48	278	2.8
New Zealand	4,278	29	4,307	43.1
Australia	2,461	4	2,465	24.6
EUROPE	297	0	297	3.0
United Kingdom	93	0	93	0.9
Scandinavia	27	0	27	0.3
Benelux	7	0	7	0.1
Germany	72	0	72	0.7
Other Europe	98	0	98	1.0
AMERICA	610	34	644	6.4
U.S.A	582	34	616	6.2
Canada	28	0	28	0.3
ASIA	369	1	370	3.7
Japan	45	0	45	0.4
China	157	0	157	1.6
Korea	6	0	6	0.1
Other Asia	161	1	162	1.6
OTHERS	72	0	72	0.7
TOTAL	9,847	155	10,002	100%
PERCENTAGE DISTRIBUTION	98.5	1.5%	100%	

Source: Ministry of the Prime Minister and Cabinet- Immigration Division; Ministry for Revenue- Customs Division and Samoa Bureau of Statistics.

1: Provisional figures.

2: Figures are subject to rounding errors

Note: (i) Visitors refer to all person visiting Samoa other than returning residents and also expatriates who are employed and living in Samoa (**include transit**).

(ii) Visitors also include Samoan citizens whose country of usual residence are country abroad.

(iii) **Scandinavia**- refers to countries of Norway, Sweden, Finland and Denmark.

(iv) **Benelux:** - refers to countries of Belgium, Netherlands and Luxembourg.

(v) **Exclude Cruise Liner Passengers.**

Table 4: Total Visitors by Usual Residence and Purpose of Visit, January 2014 ¹

Usual Residence	Purpose of Visit								
	Total	Percentage ²	Holiday/ Vacation	Business/ Conference	Visit Friends/ Relatives	Sports	Transit	Others	Not Stated
OCEANIA	8,619	86.2	2,218	680	3,886	29	692	356	758
American Samoa	1,256	12.6	129	65	424	6	287	35	310
Fiji	297	3.0	26	69	45	0	69	44	44
Cook Island	16	0.2	5	1	5	0	4	0	1
Other Pacific Is	278	2.8	21	15	41	0	92	60	49
New Zealand	4,307	43.1	1,244	354	2,145	16	178	141	229
Australia	2,465	24.6	793	176	1,226	7	62	76	125
EUROPE	297	3.0	207	26	26	2	10	9	17
United Kingdom	93	0.9	57	19	9	1	2	4	1
Scandinavia	27	0.3	22	1	0	0	1	1	2
Benelux	7	0.1	4	0	1	0	1	0	1
Germany	72	0.7	66	2	3	0	1	0	0
Other Europe	98	1.0	58	4	13	1	5	4	13
AMERICA	644	6.4	259	57	150	7	73	22	76
U.S.A.	616	6.2	238	56	147	7	72	22	74
Canada	28	0.3	21	1	3	0	1	0	2
ASIA	370	3.7	44	48	26	0	191	14	47
Japan	45	0.4	10	17	4	0	2	4	8
China	157	1.6	18	13	9	0	94	4	19
Korea	6	0.1	1	1	0	0	3	1	0
Other Asia	162	1.6	15	17	13	0	92	5	20
OTHER COUNTRIES	72	0.7	18	5	7	0	25	1	16
TOTAL	10,002	100	2,746	816	4,095	38	991	402	914
Percentage Distribution ²	100		27.5	8.2	40.9	0.4	9.9	4.0	9.1

Source: Ministry of the Prime Minister and Cabinet- Immigration Division; Ministry for Revenue- Customs Division and Samoa Bureau of Statistics.

Note : Sports was re-introduced again in the Purpose of Visit Category as of August 2008.

1: Provisional figures

2: Figures are subject to rounding errors

Table 5: Total Arrivals by Carrier and Purpose of Entry, January 2014 ¹

Carrier	Total	Purpose of Entry				
		Returning Residents	Percentage ²	Visitors	Percentage ²	
Total	15,049	100%	5,047	33.5	10,002	66.5
AIR						
Virgin Samoa ³	5,324	35.4	1887	12.5	3,437	22.8
Polynesian	2,882	19.2	998	6.6	1,884	12.5
Inter Island	357	2.4	90	0.6	267	1.8
Air New Zealand	4,671	31.0	1576	10.5	3,095	20.6
Fiji Airways ⁴	1,273	8.5	315	2.1	958	6.4
Other Air Carrier	208	1.4	2	0.0	206	1.4
SEA						
Lady Naomi	182	1.2	136	0.9	46	0.3
Yacht	1	0.0	0	0.0	1	0.0
Other Sea Carrier	151	1.0	43	0.3	108	0.7

Source: Ministry of the Prime Minister and Cabinet- Immigration Division; Ministry for Revenue- Customs Division and Samoa Bureau of Statistics.

Note: Total visitors include transit.

- 1: Provisional figures
- 2: Figures are subject to rounding errors
- 3: Polynesian Blue is now called Virgin Samoa
- 4: Air Pacific is now called Fiji Airways

Table 6: Visitors by Duration of Stay and Place of Stay, January 2014 ¹

Duration of Stay	Place of Stay			
	Total	Hotel/Motel	Private	Not Stated
Total	9,011	1,846	6,951	214
1day	124	47	69	8
2days	428	315	111	2
3days	216	76	138	2
4days	304	127	166	11
5days	339	127	206	6
6days	245	143	100	2
7days	730	243	473	14
8-14days	2542	466	2034	42
15-30days	2333	164	2123	46
31-60days	267	44	212	11
61-90days	93	5	85	3
91-180days	82	2	79	1
181-365days	79	6	69	4
Not Stated	1229	81	1086	62
Percentage Distribution ²	100	20.5	77.1	2.4

Source: Ministry of the Prime Minister and Cabinet- Immigration Division,
Ministry for Revenue- Customs Division and Samoa Bureau of Statistics.

Note: Visitors here, exclude transit.

1: Provisional figures

2: Figures are subject to rounding errors

Table 1: Monthly Arrival and Departure by Mode of Tavel and Net Migration, 2004 - 2013.

Period	Visitors Arrivals			Total Arrivals			Total Departures			Net Migration
	Air	Sea	Total	Air	Sea	Total	Air	Sea	Total	
2004	93,946	4,209	98,155	129,517	11,864	141,381	131,277	12,303	143,580	-2,199
2005	98,544	3,263	101,807	132,200	10,557	142,757	135,008	10,936	145,944	-3,187
2006	112,411	3,471	115,882	147,807	9,349	157,156	147,991	9,489	157,480	-324
2007	118,653	3,703	122,356	150,584	7,635	158,219	158,099	8,578	166,677	-8,458
2008	118,459	3,743	122,202	151,883	8,628	160,511	161,482	9,908	171,390	-10,879
2009	127,327	1,978	129,305	161,816	5,095	166,911	156,319	6,069	162,388	4,523
2010	126,970	2,530	129,500	162,052	5,539	167,591	164,426	6,326	170,752	-3,161
2011	124,706	2,898	127,604	159,660	5,738	165,398	163,605	6,216	169,821	-4,423
2012	131,945	2,749	134,694	167,211	5,509	172,720	167,842	6,297	174,139	-1,419
2013	122,172	2,505	124,677	157,542	5,335	162,877	148,151	5,381	153,532	...
2014	9,847	155	10,002	14,715	334	15,049
2011										
January	9,319	399	9,718	13,382	626	14,008	19,405	610	20,015	-6,007
February	7,030	243	7,273	9,387	443	9,830	11,671	592	12,263	-2,433
March	8,623	152	8,775	11,241	371	11,612	12,214	535	12,749	-1,137
April	9,733	109	9,842	12,473	323	12,796	11,993	363	12,356	440
May	9,234	214	9,448	12,543	444	12,987	12,718	394	13,112	-125
June	11,125	267	11,392	14,192	632	14,824	12,437	752	13,189	1,635
July	14,009	260	14,269	17,124	525	17,649	17,000	374	17,374	275
August	10,899	219	11,118	13,383	372	13,755	14,332	638	14,970	-1,215
September	9,570	187	9,757	12,382	458	12,840	12,452	504	12,956	-116
October	9,868	150	10,018	12,646	298	12,944	13,028	353	13,381	-437
November	10,224	302	10,526	12,946	508	13,454	11,918	566	12,484	970
December	15,072	396	15,468	17,961	738	18,699	14,437	535	14,972	3,727
2012										
January	9,480	133	9,613	13,878	267	14,145	18,055	554	18,609	-4,464
February	7,033	212	7,245	9,453	369	9,822	12,300	449	12,749	-2,927
March	8,926	152	9,078	11,504	359	11,863	11,034	374	11,408	455
April	10,095	104	10,199	13,157	820	13,977	12,989	1,012	14,001	-24
May	11,908	502	12,410	15,264	730	15,994	11,514	485	11,999	3,995
June	13,883	379	14,262	16,747	535	17,282	16,316	849	17,165	117
July	14,913	135	15,048	17,705	261	17,966	18,995	319	19,314	-1,348
August	10,228	205	10,433	12,509	334	12,843	13,921	453	14,374	-1,531
September	10,749	267	11,016	13,653	422	14,075	13,743	329	14,072	3
October	9,604	97	9,701	12,378	330	12,708	13,764	460	14,224	-1,516
November	9,190	266	9,456	11,943	539	12,482	11,369	395	11,764	718
December	15,936	297	16,233	19,020	543	19,563	13,842	618	14,460	5,103
2013										
January	8,821	259	9,080	12,952	334	13,286	16,397	649	17,046	-3,760
February	6,386	161	6,547	8,756	407	9,163	12,210	515	12,725	-3,562
March	8,086	160	8,246	10,776	399	11,175	9,612	438	10,050	1,125
April	9,351	165	9,516	12,325	453	12,778	12,576	653	13,229	-451
May	9,216	190	9,406	12,496	375	12,871	11,492	606	12,098	773
June	12,027	296	12,323	14,964	537	15,501	13,660	460	14,120	1,381
July	13,068	207	13,275	15,901	593	16,494	16,442	464	16,906	-412
August	11,380	175	11,555	14,046	535	14,581	15,063	536	15,599	-1,018
September	11,016	211	11,227	13,741	293	14,034	13,844	349	14,193	-159
October	9,828	209	10,037	12,512	361	12,873	14,773	158	14,931	-2,058
November	8,768	190	8,958	11,753	453	12,206	12,082	553	12,635	-502
December	14,225	282	14,507	17,320	595	17,915
2014										
January /1	9,847	155	10,002	14,715	334	15,049

Source : Ministry of the Prime Minister and Cabinet- Immigration Division; Ministry for Revenue- Customs Division and Samoa Bureau of Statistics.

1: Provisional figures

... Denote not yet available

■ : Revised Figures

Table 2: Total Arrivals by Age, Purpose of Entry and Gender, January 2014 ¹

Age	Purpose of Entry																	
	Total			Visitors			Returning Residents			Transit			Temporary Residents			Others		
	Total	Male	Female	Total	Male	Female	Total	Male	Female	Total	Male	Female	Total	Male	Female	Total	Male	Female
Total	15,049	7,757	7,292	8,403	4,198	4,205	5,047	2,553	2,494	991	648	343	407	234	173	201	124	77
0 - 4	816	426	390	464	238	226	308	159	149	26	18	8	16	9	7	2	2	0
5 - 9	852	438	414	457	229	228	342	177	165	39	23	16	13	8	5	1	1	0
10 - 14	995	471	524	503	244	259	418	192	226	47	23	24	17	8	9	10	4	6
15 - 19	1,113	503	610	548	231	317	476	214	262	57	36	21	16	12	4	16	10	6
20 - 24	1,271	595	676	699	301	398	423	206	217	97	58	39	33	21	12	19	9	10
25 - 29	1,194	636	558	616	282	334	405	229	176	104	74	30	41	26	15	28	25	3
30 - 34	1,075	540	535	599	277	322	316	161	155	99	72	27	45	22	23	16	8	8
35 - 39	1,057	561	496	607	319	288	323	160	163	78	56	22	37	19	18	12	7	5
40 - 44	1,201	660	541	644	345	299	379	195	184	116	80	36	42	27	15	20	13	7
45 - 49	1,218	656	562	728	379	349	337	186	151	99	62	37	40	19	21	14	10	4
50 - 54	1,221	660	561	712	376	336	380	199	181	88	60	28	25	16	9	16	9	7
55 - 59	1,032	554	478	624	341	283	316	160	156	47	27	20	26	16	10	19	10	9
60 - 64	847	431	416	508	261	247	254	119	135	46	28	18	23	13	10	16	10	6
65 - 69	586	333	253	356	201	155	171	96	75	31	21	10	19	11	8	9	4	5
70 - 74	309	170	139	189	103	86	104	56	48	8	6	2	8	5	3	0	0	0
75 +	262	123	139	149	71	78	95	44	51	9	4	5	6	2	4	3	2	1
% Distribution ²	100	51.5	48.5	55.8	27.9	27.9	33.5	17.0	16.6	6.6	4.3	2.3	2.7	1.6	1.1	1.3	0.8	0.5

Source: Ministry of the Prime Minister and Cabinet - Immigration Division; Ministry for Revenue - Customs Division and Samoa Bureau of Statistics.

1: Provisional figures

2: Figures are subject to rounding errors

Note: The Purpose of Entry categories of Temporary Residents and Others were introduced as a result of the introduction of the new arrival card

Table 3: Total Visitors Arrivals by Country of Usual Residents and Mode of Travel, January 2014 ¹

Country of Usual Residence	Mode of Travel			Percentage (%) ²
	Air	Sea	Total	
OCEANIA	8,499	120	8,619	86.2
American Samoa	1,218	38	1,256	12.6
Fiji	296	1	297	3.0
Cook Island	16	0	16	0.2
Other Pacific Is	230	48	278	2.8
New Zealand	4,278	29	4,307	43.1
Australia	2,461	4	2,465	24.6
EUROPE	297	0	297	3.0
United Kingdom	93	0	93	0.9
Scandinavia	27	0	27	0.3
Benelux	7	0	7	0.1
Germany	72	0	72	0.7
Other Europe	98	0	98	1.0
AMERICA	610	34	644	6.4
U.S.A	582	34	616	6.2
Canada	28	0	28	0.3
ASIA	369	1	370	3.7
Japan	45	0	45	0.4
China	157	0	157	1.6
Korea	6	0	6	0.1
Other Asia	161	1	162	1.6
OTHERS	72	0	72	0.7
TOTAL	9,847	155	10,002	100%
PERCENTAGE DISTRIBUTION	98.5	1.5%	100%	

Source: Ministry of the Prime Minister and Cabinet- Immigration Division; Ministry for Revenue- Customs Division and Samoa Bureau of Statistics.

1: Provisional figures.

2: Figures are subject to rounding errors

Note: (i) Visitors refer to all person visiting Samoa other than returning residents and also expatriates who are employed and living in Samoa (**include transit**).

(ii) Visitors also include Samoan citizens whose country of usual residence are country abroad.

(iii) **Scandinavia**- refers to countries of Norway, Sweden, Finland and Denmark.

(iv) **Benelux:** - refers to countries of Belgium, Netherlands and Luxembourg.

(v) **Exclude Cruise Liner Passengers.**

Table 4: Total Visitors by Usual Residence and Purpose of Visit, January 2014 ¹

Usual Residence	Purpose of Visit								
	Total	Percentage ²	Holiday/ Vacation	Business/ Conference	Visit Friends/ Relatives	Sports	Transit	Others	Not Stated
OCEANIA	8,619	86.2	2,218	680	3,886	29	692	356	758
American Samoa	1,256	12.6	129	65	424	6	287	35	310
Fiji	297	3.0	26	69	45	0	69	44	44
Cook Island	16	0.2	5	1	5	0	4	0	1
Other Pacific Is	278	2.8	21	15	41	0	92	60	49
New Zealand	4,307	43.1	1,244	354	2,145	16	178	141	229
Australia	2,465	24.6	793	176	1,226	7	62	76	125
EUROPE	297	3.0	207	26	26	2	10	9	17
United Kingdom	93	0.9	57	19	9	1	2	4	1
Scandinavia	27	0.3	22	1	0	0	1	1	2
Benelux	7	0.1	4	0	1	0	1	0	1
Germany	72	0.7	66	2	3	0	1	0	0
Other Europe	98	1.0	58	4	13	1	5	4	13
AMERICA	644	6.4	259	57	150	7	73	22	76
U.S.A.	616	6.2	238	56	147	7	72	22	74
Canada	28	0.3	21	1	3	0	1	0	2
ASIA	370	3.7	44	48	26	0	191	14	47
Japan	45	0.4	10	17	4	0	2	4	8
China	157	1.6	18	13	9	0	94	4	19
Korea	6	0.1	1	1	0	0	3	1	0
Other Asia	162	1.6	15	17	13	0	92	5	20
OTHER COUNTRIES	72	0.7	18	5	7	0	25	1	16
TOTAL	10,002	100	2,746	816	4,095	38	991	402	914
Percentage Distribution ²	100		27.5	8.2	40.9	0.4	9.9	4.0	9.1

Source: Ministry of the Prime Minister and Cabinet- Immigration Division; Ministry for Revenue- Customs Division and Samoa Bureau of Statistics.

Note : Sports was re-introduced again in the Purpose of Visit Category as of August 2008.

1: Provisional figures

2: Figures are subject to rounding errors

Table 5: Total Arrivals by Carrier and Purpose of Entry, January 2014 ¹

Carrier	Total	Purpose of Entry				
		Returning Residents	Percentage ²	Visitors	Percentage ²	
Total	15,049	100%	5,047	33.5	10,002	66.5
AIR						
Virgin Samoa ³	5,324	35.4	1887	12.5	3,437	22.8
Polynesian	2,882	19.2	998	6.6	1,884	12.5
Inter Island	357	2.4	90	0.6	267	1.8
Air New Zealand	4,671	31.0	1576	10.5	3,095	20.6
Fiji Airways ⁴	1,273	8.5	315	2.1	958	6.4
Other Air Carrier	208	1.4	2	0.0	206	1.4
SEA						
Lady Naomi	182	1.2	136	0.9	46	0.3
Yacht	1	0.0	0	0.0	1	0.0
Other Sea Carrier	151	1.0	43	0.3	108	0.7

Source: Ministry of the Prime Minister and Cabinet- Immigration Division; Ministry for Revenue- Customs Division and Samoa Bureau of Statistics.

Note: Total visitors include transit.

- 1: Provisional figures
- 2: Figures are subject to rounding errors
- 3: Polynesian Blue is now called Virgin Samoa
- 4: Air Pacific is now called Fiji Airways

Table 6: Visitors by Duration of Stay and Place of Stay, January 2014 ¹

Duration of Stay	Place of Stay			
	Total	Hotel/Motel	Private	Not Stated
Total	9,011	1,846	6,951	214
1day	124	47	69	8
2days	428	315	111	2
3days	216	76	138	2
4days	304	127	166	11
5days	339	127	206	6
6days	245	143	100	2
7days	730	243	473	14
8-14days	2542	466	2034	42
15-30days	2333	164	2123	46
31-60days	267	44	212	11
61-90days	93	5	85	3
91-180days	82	2	79	1
181-365days	79	6	69	4
Not Stated	1229	81	1086	62
Percentage Distribution ²	100	20.5	77.1	2.4

Source: Ministry of the Prime Minister and Cabinet- Immigration Division,
Ministry for Revenue- Customs Division and Samoa Bureau of Statistics.

Note: Visitors here, exclude transit.

1: Provisional figures

2: Figures are subject to rounding errors

Table 1: Monthly Arrival and Departure by Mode of Tavel and Net Migration, 2004 - 2013.

Period	Visitors Arrivals			Total Arrivals			Total Departures			Net Migration
	Air	Sea	Total	Air	Sea	Total	Air	Sea	Total	
2004	93,946	4,209	98,155	129,517	11,864	141,381	131,277	12,303	143,580	-2,199
2005	98,544	3,263	101,807	132,200	10,557	142,757	135,008	10,936	145,944	-3,187
2006	112,411	3,471	115,882	147,807	9,349	157,156	147,991	9,489	157,480	-324
2007	118,653	3,703	122,356	150,584	7,635	158,219	158,099	8,578	166,677	-8,458
2008	118,459	3,743	122,202	151,883	8,628	160,511	161,482	9,908	171,390	-10,879
2009	127,327	1,978	129,305	161,816	5,095	166,911	156,319	6,069	162,388	4,523
2010	126,970	2,530	129,500	162,052	5,539	167,591	164,426	6,326	170,752	-3,161
2011	124,706	2,898	127,604	159,660	5,738	165,398	163,605	6,216	169,821	-4,423
2012	131,945	2,749	134,694	167,211	5,509	172,720	167,842	6,297	174,139	-1,419
2013	122,172	2,505	124,677	157,542	5,335	162,877	148,151	5,381	153,532	...
2014	9,847	155	10,002	14,715	334	15,049
2011										
January	9,319	399	9,718	13,382	626	14,008	19,405	610	20,015	-6,007
February	7,030	243	7,273	9,387	443	9,830	11,671	592	12,263	-2,433
March	8,623	152	8,775	11,241	371	11,612	12,214	535	12,749	-1,137
April	9,733	109	9,842	12,473	323	12,796	11,993	363	12,356	440
May	9,234	214	9,448	12,543	444	12,987	12,718	394	13,112	-125
June	11,125	267	11,392	14,192	632	14,824	12,437	752	13,189	1,635
July	14,009	260	14,269	17,124	525	17,649	17,000	374	17,374	275
August	10,899	219	11,118	13,383	372	13,755	14,332	638	14,970	-1,215
September	9,570	187	9,757	12,382	458	12,840	12,452	504	12,956	-116
October	9,868	150	10,018	12,646	298	12,944	13,028	353	13,381	-437
November	10,224	302	10,526	12,946	508	13,454	11,918	566	12,484	970
December	15,072	396	15,468	17,961	738	18,699	14,437	535	14,972	3,727
2012										
January	9,480	133	9,613	13,878	267	14,145	18,055	554	18,609	-4,464
February	7,033	212	7,245	9,453	369	9,822	12,300	449	12,749	-2,927
March	8,926	152	9,078	11,504	359	11,863	11,034	374	11,408	455
April	10,095	104	10,199	13,157	820	13,977	12,989	1,012	14,001	-24
May	11,908	502	12,410	15,264	730	15,994	11,514	485	11,999	3,995
June	13,883	379	14,262	16,747	535	17,282	16,316	849	17,165	117
July	14,913	135	15,048	17,705	261	17,966	18,995	319	19,314	-1,348
August	10,228	205	10,433	12,509	334	12,843	13,921	453	14,374	-1,531
September	10,749	267	11,016	13,653	422	14,075	13,743	329	14,072	3
October	9,604	97	9,701	12,378	330	12,708	13,764	460	14,224	-1,516
November	9,190	266	9,456	11,943	539	12,482	11,369	395	11,764	718
December	15,936	297	16,233	19,020	543	19,563	13,842	618	14,460	5,103
2013										
January	8,821	259	9,080	12,952	334	13,286	16,397	649	17,046	-3,760
February	6,386	161	6,547	8,756	407	9,163	12,210	515	12,725	-3,562
March	8,086	160	8,246	10,776	399	11,175	9,612	438	10,050	1,125
April	9,351	165	9,516	12,325	453	12,778	12,576	653	13,229	-451
May	9,216	190	9,406	12,496	375	12,871	11,492	606	12,098	773
June	12,027	296	12,323	14,964	537	15,501	13,660	460	14,120	1,381
July	13,068	207	13,275	15,901	593	16,494	16,442	464	16,906	-412
August	11,380	175	11,555	14,046	535	14,581	15,063	536	15,599	-1,018
September	11,016	211	11,227	13,741	293	14,034	13,844	349	14,193	-159
October	9,828	209	10,037	12,512	361	12,873	14,773	158	14,931	-2,058
November	8,768	190	8,958	11,753	453	12,206	12,082	553	12,635	-502
December	14,225	282	14,507	17,320	595	17,915
2014										
January /1	9,847	155	10,002	14,715	334	15,049

Source : Ministry of the Prime Minister and Cabinet- Immigration Division; Ministry for Revenue- Customs Division and Samoa Bureau of Statistics.

1: Provisional figures

... Denote not yet available

■ : Revised Figures

Table 2: Total Arrivals by Age, Purpose of Entry and Gender, January 2014 ¹

Age	Purpose of Entry																	
	Total			Visitors			Returning Residents			Transit			Temporary Residents			Others		
	Total	Male	Female	Total	Male	Female	Total	Male	Female	Total	Male	Female	Total	Male	Female	Total	Male	Female
Total	15,049	7,757	7,292	8,403	4,198	4,205	5,047	2,553	2,494	991	648	343	407	234	173	201	124	77
0 - 4	816	426	390	464	238	226	308	159	149	26	18	8	16	9	7	2	2	0
5 - 9	852	438	414	457	229	228	342	177	165	39	23	16	13	8	5	1	1	0
10 - 14	995	471	524	503	244	259	418	192	226	47	23	24	17	8	9	10	4	6
15 - 19	1,113	503	610	548	231	317	476	214	262	57	36	21	16	12	4	16	10	6
20 - 24	1,271	595	676	699	301	398	423	206	217	97	58	39	33	21	12	19	9	10
25 - 29	1,194	636	558	616	282	334	405	229	176	104	74	30	41	26	15	28	25	3
30 - 34	1,075	540	535	599	277	322	316	161	155	99	72	27	45	22	23	16	8	8
35 - 39	1,057	561	496	607	319	288	323	160	163	78	56	22	37	19	18	12	7	5
40 - 44	1,201	660	541	644	345	299	379	195	184	116	80	36	42	27	15	20	13	7
45 - 49	1,218	656	562	728	379	349	337	186	151	99	62	37	40	19	21	14	10	4
50 - 54	1,221	660	561	712	376	336	380	199	181	88	60	28	25	16	9	16	9	7
55 - 59	1,032	554	478	624	341	283	316	160	156	47	27	20	26	16	10	19	10	9
60 - 64	847	431	416	508	261	247	254	119	135	46	28	18	23	13	10	16	10	6
65 - 69	586	333	253	356	201	155	171	96	75	31	21	10	19	11	8	9	4	5
70 - 74	309	170	139	189	103	86	104	56	48	8	6	2	8	5	3	0	0	0
75 +	262	123	139	149	71	78	95	44	51	9	4	5	6	2	4	3	2	1
% Distribution ²	100	51.5	48.5	55.8	27.9	27.9	33.5	17.0	16.6	6.6	4.3	2.3	2.7	1.6	1.1	1.3	0.8	0.5

Source: Ministry of the Prime Minister and Cabinet - Immigration Division; Ministry for Revenue - Customs Division and Samoa Bureau of Statistics.

1: Provisional figures

2: Figures are subject to rounding errors

Note: The Purpose of Entry categories of Temporary Residents and Others were introduced as a result of the introduction of the new arrival card

Table 3: Total Visitors Arrivals by Country of Usual Residents and Mode of Travel, January 2014 ¹

Country of Usual Residence	Mode of Travel			Percentage (%) ²
	Air	Sea	Total	
OCEANIA	8,499	120	8,619	86.2
American Samoa	1,218	38	1,256	12.6
Fiji	296	1	297	3.0
Cook Island	16	0	16	0.2
Other Pacific Is	230	48	278	2.8
New Zealand	4,278	29	4,307	43.1
Australia	2,461	4	2,465	24.6
EUROPE	297	0	297	3.0
United Kingdom	93	0	93	0.9
Scandinavia	27	0	27	0.3
Benelux	7	0	7	0.1
Germany	72	0	72	0.7
Other Europe	98	0	98	1.0
AMERICA	610	34	644	6.4
U.S.A	582	34	616	6.2
Canada	28	0	28	0.3
ASIA	369	1	370	3.7
Japan	45	0	45	0.4
China	157	0	157	1.6
Korea	6	0	6	0.1
Other Asia	161	1	162	1.6
OTHERS	72	0	72	0.7
TOTAL	9,847	155	10,002	100%
PERCENTAGE DISTRIBUTION	98.5	1.5%	100%	

Source: Ministry of the Prime Minister and Cabinet- Immigration Division; Ministry for Revenue- Customs Division and Samoa Bureau of Statistics.

1: Provisional figures.

2: Figures are subject to rounding errors

Note: (i) Visitors refer to all person visiting Samoa other than returning residents and also expatriates who are employed and living in Samoa (**include transit**).

(ii) Visitors also include Samoan citizens whose country of usual residence are country abroad.

(iii) **Scandinavia**- refers to countries of Norway, Sweden, Finland and Denmark.

(iv) **Benelux:** - refers to countries of Belgium, Netherlands and Luxembourg.

(v) **Exclude Cruise Liner Passengers.**

Table 4: Total Visitors by Usual Residence and Purpose of Visit, January 2014 ¹

Usual Residence	Purpose of Visit								
	Total	Percentage ²	Holiday/ Vacation	Business/ Conference	Visit Friends/ Relatives	Sports	Transit	Others	Not Stated
OCEANIA	8,619	86.2	2,218	680	3,886	29	692	356	758
American Samoa	1,256	12.6	129	65	424	6	287	35	310
Fiji	297	3.0	26	69	45	0	69	44	44
Cook Island	16	0.2	5	1	5	0	4	0	1
Other Pacific Is	278	2.8	21	15	41	0	92	60	49
New Zealand	4,307	43.1	1,244	354	2,145	16	178	141	229
Australia	2,465	24.6	793	176	1,226	7	62	76	125
EUROPE	297	3.0	207	26	26	2	10	9	17
United Kingdom	93	0.9	57	19	9	1	2	4	1
Scandinavia	27	0.3	22	1	0	0	1	1	2
Benelux	7	0.1	4	0	1	0	1	0	1
Germany	72	0.7	66	2	3	0	1	0	0
Other Europe	98	1.0	58	4	13	1	5	4	13
AMERICA	644	6.4	259	57	150	7	73	22	76
U.S.A.	616	6.2	238	56	147	7	72	22	74
Canada	28	0.3	21	1	3	0	1	0	2
ASIA	370	3.7	44	48	26	0	191	14	47
Japan	45	0.4	10	17	4	0	2	4	8
China	157	1.6	18	13	9	0	94	4	19
Korea	6	0.1	1	1	0	0	3	1	0
Other Asia	162	1.6	15	17	13	0	92	5	20
OTHER COUNTRIES	72	0.7	18	5	7	0	25	1	16
TOTAL	10,002	100	2,746	816	4,095	38	991	402	914
Percentage Distribution ²	100		27.5	8.2	40.9	0.4	9.9	4.0	9.1

Source: Ministry of the Prime Minister and Cabinet- Immigration Division; Ministry for Revenue- Customs Division and Samoa Bureau of Statistics.

Note : Sports was re-introduced again in the Purpose of Visit Category as of August 2008.

1: Provisional figures

2: Figures are subject to rounding errors

Table 5: Total Arrivals by Carrier and Purpose of Entry, January 2014 ¹

Carrier	Total	Purpose of Entry				
		Returning Residents	Percentage ²	Visitors	Percentage ²	
Total	15,049	100%	5,047	33.5	10,002	66.5
AIR						
Virgin Samoa ³	5,324	35.4	1887	12.5	3,437	22.8
Polynesian	2,882	19.2	998	6.6	1,884	12.5
Inter Island	357	2.4	90	0.6	267	1.8
Air New Zealand	4,671	31.0	1576	10.5	3,095	20.6
Fiji Airways ⁴	1,273	8.5	315	2.1	958	6.4
Other Air Carrier	208	1.4	2	0.0	206	1.4
SEA						
Lady Naomi	182	1.2	136	0.9	46	0.3
Yacht	1	0.0	0	0.0	1	0.0
Other Sea Carrier	151	1.0	43	0.3	108	0.7

Source: Ministry of the Prime Minister and Cabinet- Immigration Division; Ministry for Revenue- Customs Division and Samoa Bureau of Statistics.

Note: Total visitors include transit.

- 1: Provisional figures
- 2: Figures are subject to rounding errors
- 3: Polynesian Blue is now called Virgin Samoa
- 4: Air Pacific is now called Fiji Airways

Table 6: Visitors by Duration of Stay and Place of Stay, January 2014 ¹

Duration of Stay	Place of Stay			
	Total	Hotel/Motel	Private	Not Stated
Total	9,011	1,846	6,951	214
1day	124	47	69	8
2days	428	315	111	2
3days	216	76	138	2
4days	304	127	166	11
5days	339	127	206	6
6days	245	143	100	2
7days	730	243	473	14
8-14days	2542	466	2034	42
15-30days	2333	164	2123	46
31-60days	267	44	212	11
61-90days	93	5	85	3
91-180days	82	2	79	1
181-365days	79	6	69	4
Not Stated	1229	81	1086	62
Percentage Distribution ²	100	20.5	77.1	2.4

Source: Ministry of the Prime Minister and Cabinet- Immigration Division,
Ministry for Revenue- Customs Division and Samoa Bureau of Statistics.

Note: Visitors here, exclude transit.

1: Provisional figures

2: Figures are subject to rounding errors