

Please address all correspondence  
to the Government Statistician  
In reply, please quote the file reference



File Ref: IAS 10/14

# GOVERNMENT OF SAMOA SAMOA BUREAU OF STATISTICS

## International Arrival Statistics October 2014

### HIGHLIGHTS OF THE MONTH

In October 2014 compared with October 2013

- ❖ Total arrivals (13,181) increased by 2.4 percent
- ❖ Total visitors (10,061) increased by 0.3 percent
- ❖ More visitors arrived from Australia (up by 300), USA (up by 120) and New Zealand (up by 20) but few arrived from American Samoa (down by 140).

October 2014	Number	Change from previous month	Change from previous year
All Arrivals	13,181	-9.8%	2.4%
All Visitors	10,061	-12.5%	0.3%

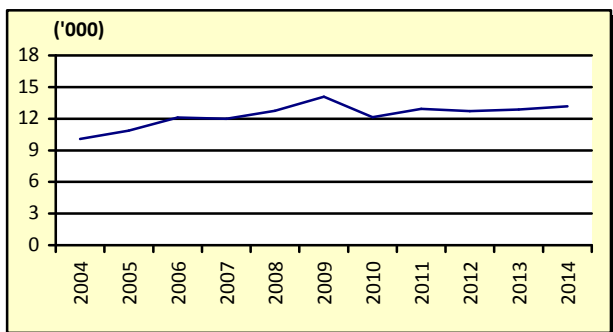
### OVERVIEW

#### 1. TOTAL ARRIVALS

The total International Arrival Statistics recorded for the month of **October 2014** (table 1), revealed a decrease of 9.8 percent over the previous month of September but an increase of 2.4 percent over the corresponding month of October 2013. (Refer Fig. 1)

Air was the preferred mode of travel to Samoa, representing 96.9 percent (12,767) of total arrivals, while the remaining 3.1 percent (414) arrived by sea in October 2014.

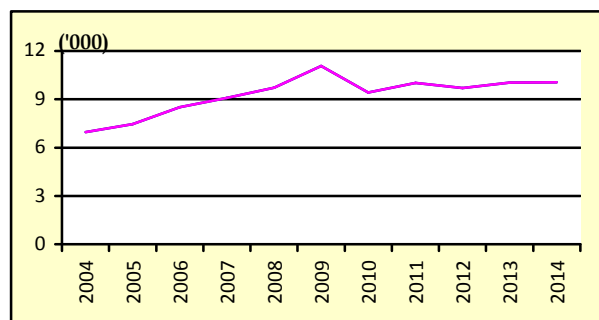
**Fig. 1: October Total Arrivals, 2004 - 2014**



#### 2. TOTAL VISITORS

Overall Visitors numbered 10,061 for the month under review revealed a decrease of 12.5 percent over the previous month but an increase of 0.3 percent when compared to the corresponding month of October 2013. (Refer Fig. 2).

**Fig. 2: October Total Visitors, 2004 - 2014**



Visitors' arrivals have a strong seasonal pattern with a regular peak of numbers during holiday seasons normally from December to January. Graph 2 in the Appendix shows the smooth-term trend for visitors for arrivals adjusting for seasonal pattern except for the additive outliers for May and June 2012 during Samoa's 50<sup>th</sup> Anniversary as well as a slight change for August and September this year (2014) during the SIDS (Small Island Development States) Conference.

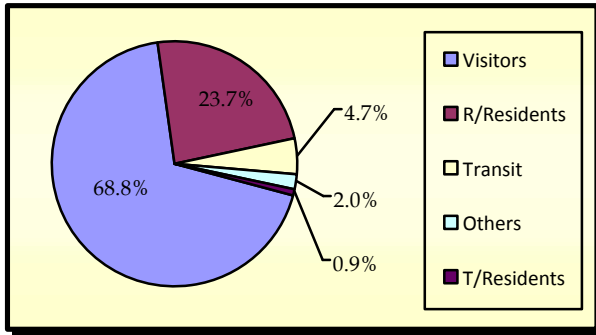
#### 3. TOTAL ARRIVALS BY PURPOSE OF ENTRY

Visitors, including transit made up the largest component of all arrivals with 37.3 percent (4,912) being males and 36.2 percent (4,764) being females.

Returning residents made up 23.7 percent (3,120) of arrivals with 13.1 percent (1,732) being males and 10.5 percent (1,388) being females.

Additionally, temporary residents made up 0.9 percent (116) of total arrivals with 0.5 percent (69) being males and 0.4 percent (47) being females. Other purposes of entry made up the remainder of the total arrivals with 2.0 percent (269). (Refer Fig.3)

**Fig. 3: Total Arrivals, by Purpose of Visit**

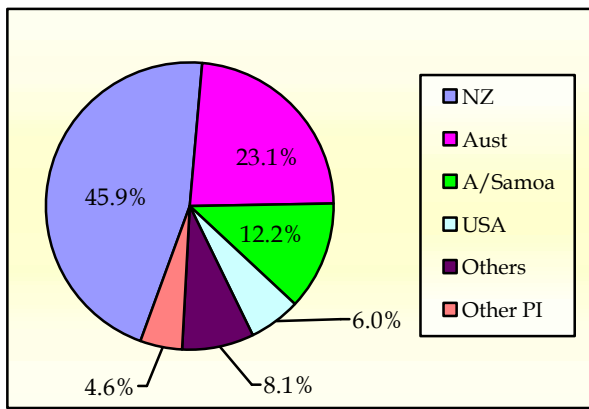


**4. VISITORS BY COUNTRY OF USUAL RESIDENCE**

New Zealand remains as the leading country in visitors' arrival by country of usual residence (Table 3) accounting for 45.9 percent or 4,619 of total visitors, compared to 44.7 percent or 5,142 visitors reported in the previous month. Australia followed next with a 23.1 percent share (2,327) compared to 26.4 percent or 3,035 visitors reported in the previous month.

American Samoa represented 12.2 percent (1,227) October 2014 compared to 9.7 or 1,113 visitors in the previous month and the United States of America remains the smallest of the principal source markets with a share of 6.0 percent (606) compared to 5.0 percent share or 573 visitors which was reported in the previous month. (Refer Fig. 4)

**Fig. 4: Total Visitors, by Country of Usual Residence**

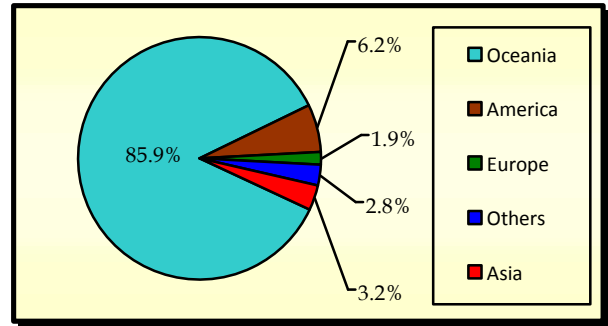


**5. VISITORS BY REGION**

The Oceanic Region had the highest share of total visitors with 85.9 percent compared to 86.0 percent reported in October 2013, followed by America with 6.2 percent (5.2 percent in October 2013).

Asia represented 3.2 percent of total visitors compared with 2.5 percent reported in the previous year, while Europe represented the lowest share with 1.9 percent compared to 2.7 percent reported in October 2013. (Refer Fig. 5).

**Fig. 5: Total Visitors, by Region**



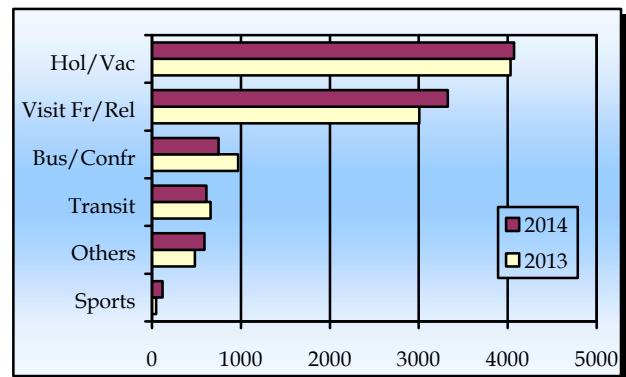
**6. VISITORS BY PURPOSE OF VISIT**

The principal source markets (table 4) namely New Zealand, American Samoa, Australia, and the United States of America constituted 87.2 percent of all visitors visiting Samoa in October 2014.

The majority of visitors (40.5 percent) were here on Holiday/ Vacation followed by those that came here to visit friends and relatives with 33.0 percent.

Visitors that entered our shores for Business/ Conference and those that were here on Transit reported 7.4 percent and 6.1 percent respectively. Fig.6 depicts total visitors by purpose of visit for October 2013 and October 2014.

**Fig. 6: Total Visitors, by Purpose of Visit**

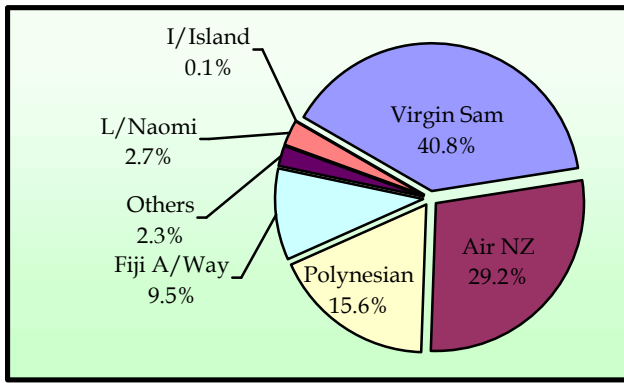


**7. TOTAL ARRIVALS BY CARRIER**

As depicted in table 5, Virgin Samoa, formerly known as Polynesian Blue, leads the way of arrival by carriers' during the reference period with a 39.2 percent share (5,168 passengers) followed by Air New Zealand with a share of 27.9 percent (3,679 passengers).

Polynesian Airlines brought in 17.9 percent (2,364) of total arrivals while Fiji Air Ways, formerly known as Air Pacific, recorded a share of 9.9 percent (1,301). Fig. 7 illustrates total arrivals by carrier during the reference period.

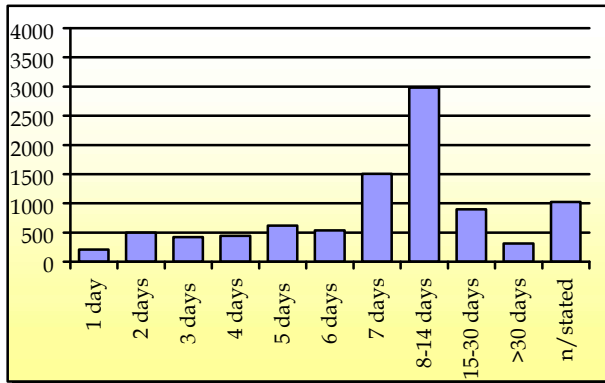
**Fig. 7: Total Arrivals by Carrier**



**8. VISITORS DURATION AND PLACE OF STAY**

The usual visitor's (excluding transit) duration of stay in Samoa (Table 6) is between seven and thirty days, as shown in Fig. 8.

**Fig. 8: Total Visitors by Duration of Stay**



Most visitors (53.3 percent or 5,039 visitors) reported staying in private accommodation or with families/ relatives while 39.0 percent (3,681) stayed in hotels/ motels. The remaining 7.7 percent or 728 visitors did not state their place of stay. (Refer Fig. 9).

**Fig. 9: Total Visitors by Place of Stay**

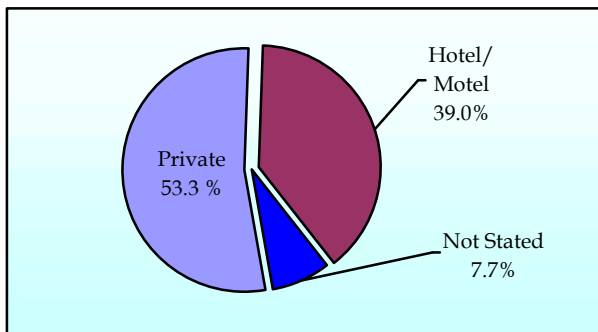
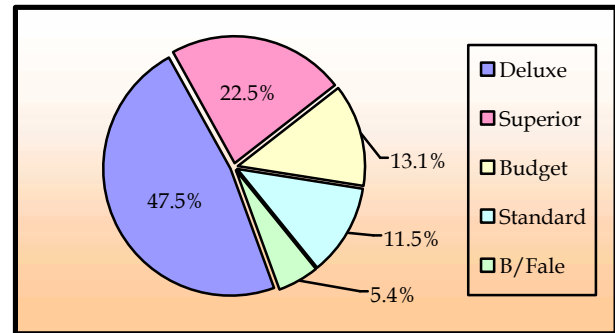


Fig. 10 portrays the number of visitors who stayed in hotels/ motels (3,681) by type of accommodation (hotel/ motel), within the reference month.

**Fig. 10: Visitors Staying in Hotels/ Motels by Type of Accommodation**



Detailed information for the reference period is attached in Tables 1 – 6 and the appendix shows longer time series.

**BACKGROUND**

The sourced documents for the compilation of International Arrival Statistics are the immigration arrival and departure card forms.

These forms are completed by all incoming and outgoing travelers at the three local points of entry namely (1) Apia wharf (2) Faleolo and (3) Fagalii international airports.

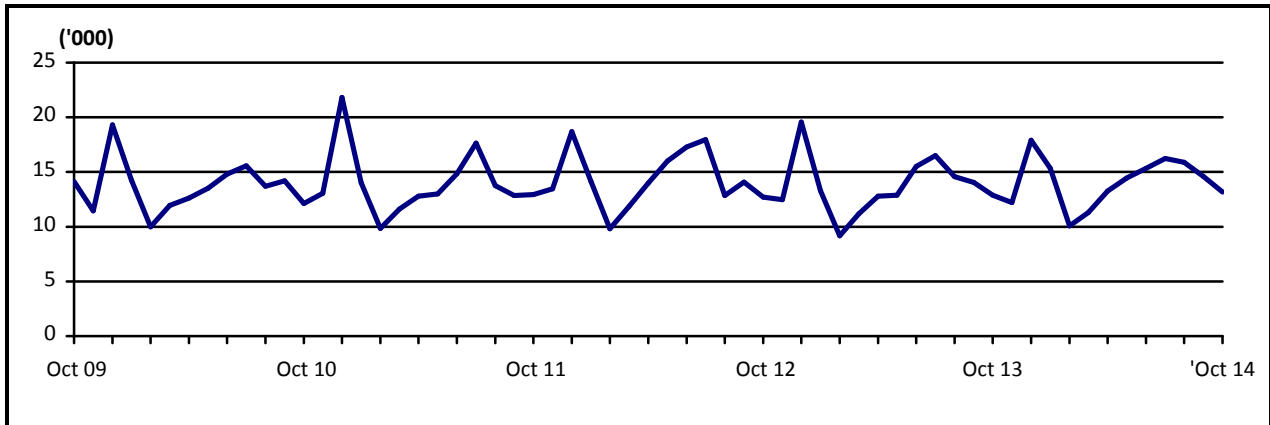
International arrival statistics are compiled on a monthly, quarterly and annual basis. These reports can also be extracted from our website: [www.sbs.gov.ws](http://www.sbs.gov.ws)

**The migration report for the month of November 2014 will be released on 23<sup>rd</sup> December 2014.**

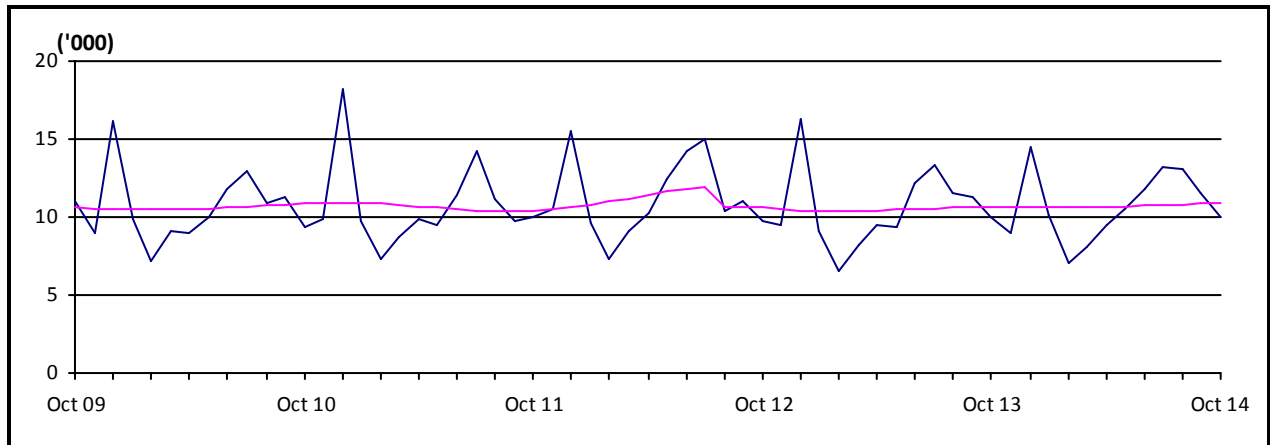
**Muagututi'a Sefuiva Reupena  
GOVERNMENT STATISTICIAN**

**APPENDIX**

Graph 1: Monthly Total Arrivals October 2009 – October 2014



Graph 2: Monthly Total Visitors October 2009 – October 2014



Graph 3: Visitors Percentage Change over Previous month October 2009 – October 2014

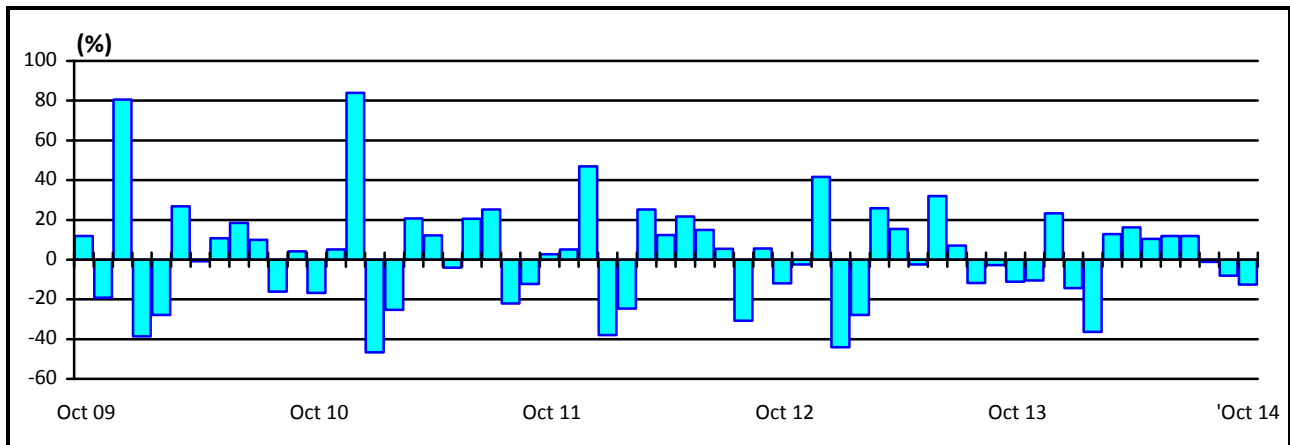


Table 1: Monthly Arrival and Departure by Mode of Travel and Net Migration, 2004 - 2014.

Period	Visitors Arrivals			Total Arrivals			Total Departures			Net Migration
	Air	Sea	Total	Air	Sea	Total	Air	Sea	Total	
<b>2004</b>	93,946	4,209	<b>98,155</b>	129,517	11,864	<b>141,381</b>	131,277	12,303	<b>143,580</b>	<b>-2,199</b>
<b>2005</b>	98,544	3,263	<b>101,807</b>	132,200	10,557	<b>142,757</b>	135,008	10,936	<b>145,944</b>	<b>-3,187</b>
<b>2006</b>	112,411	3,471	<b>115,882</b>	147,807	9,349	<b>157,156</b>	147,991	9,489	<b>157,480</b>	<b>-324</b>
<b>2007</b>	118,653	3,703	<b>122,356</b>	150,584	7,635	<b>158,219</b>	158,099	8,578	<b>166,677</b>	<b>-8,458</b>
<b>2008</b>	118,459	3,743	<b>122,202</b>	151,883	8,628	<b>160,511</b>	161,482	9,908	<b>171,390</b>	<b>-10,879</b>
<b>2009</b>	127,327	1,978	<b>129,305</b>	161,816	5,095	<b>166,911</b>	156,319	6,069	<b>162,388</b>	<b>4,523</b>
<b>2010</b>	126,970	2,530	<b>129,500</b>	162,052	5,539	<b>167,591</b>	164,426	6,326	<b>170,752</b>	<b>-3,161</b>
<b>2011</b>	124,706	2,898	<b>127,604</b>	159,660	5,738	<b>165,398</b>	163,605	6,216	<b>169,821</b>	<b>-4,423</b>
<b>2012</b>	131,945	2,749	<b>134,694</b>	167,211	5,509	<b>172,720</b>	167,842	6,297	<b>174,139</b>	<b>-1,419</b>
<b>2013</b>	122,171	2,502	<b>124,673</b>	157,542	5,335	<b>162,877</b>	162,333	5,885	<b>168,218</b>	<b>-5,341</b>
<b>2014</b>	<b>102,568</b>	<b>2,406</b>	<b>104,974</b>	<b>133,918</b>	<b>5,770</b>	<b>139,688</b>	<b>80,384</b>	<b>4,062</b>	<b>84,446</b>	...
<b>2011</b>										
September	9,570	187	9,757	12,382	458	12,840	12,452	504	12,956	<b>-116</b>
October	9,868	150	10,018	12,646	298	12,944	13,028	353	13,381	<b>-437</b>
November	10,224	302	10,526	12,946	508	13,454	11,918	566	12,484	<b>970</b>
December	15,072	396	15,468	17,961	738	18,699	14,437	535	14,972	<b>3,727</b>
<b>2012</b>										
January	9,480	133	9,613	13,878	267	14,145	18,055	554	18,609	<b>-4,464</b>
February	7,033	212	7,245	9,453	369	9,822	12,300	449	12,749	<b>-2,927</b>
March	8,926	152	9,078	11,504	359	11,863	11,034	374	11,408	<b>455</b>
April	10,095	104	10,199	13,157	820	13,977	12,989	1,012	14,001	<b>-24</b>
May	11,908	502	12,410	15,264	730	15,994	11,514	485	11,999	<b>3,995</b>
June	13,883	379	14,262	16,747	535	17,282	16,316	849	17,165	<b>117</b>
July	14,913	135	15,048	17,705	261	17,966	18,995	319	19,314	<b>-1,348</b>
August	10,228	205	10,433	12,509	334	12,843	13,921	453	14,374	<b>-1,531</b>
September	10,749	267	11,016	13,653	422	14,075	13,743	329	14,072	<b>3</b>
October	9,604	97	9,701	12,378	330	12,708	13,764	460	14,224	<b>-1,516</b>
November	9,190	266	9,456	11,943	539	12,482	11,369	395	11,764	<b>718</b>
December	15,936	297	16,233	19,020	543	19,563	13,842	618	14,460	<b>5,103</b>
<b>2013</b>										
January	8,821	259	9,080	12,952	334	13,286	16,397	649	17,046	<b>-3,760</b>
February	6,386	161	6,547	8,756	407	9,163	12,210	515	12,725	<b>-3,562</b>
March	8,086	160	8,246	10,776	399	11,175	9,612	438	10,050	<b>1,125</b>
April	9,351	165	9,516	12,325	453	12,778	12,576	653	13,229	<b>-451</b>
May	9,216	190	9,406	12,496	375	12,871	11,492	606	12,098	<b>773</b>
June	12,027	296	12,323	14,964	537	15,501	13,660	460	14,120	<b>1,381</b>
July	13,067	207	13,274	15,901	593	16,494	16,442	464	16,906	<b>-412</b>
August	11,380	175	11,555	14,046	535	14,581	15,063	536	15,599	<b>-1,018</b>
September	11,016	211	11,227	13,741	293	14,034	13,844	349	14,193	<b>-159</b>
October	9,828	207	10,035	12,512	361	12,873	14,773	158	14,931	<b>-2,058</b>
November	8,768	189	8,957	11,753	453	12,206	12,082	553	12,635	<b>-429</b>
December	14,225	282	14,507	17,320	595	17,915	14,182	504	14,686	<b>3,229</b>
<b>2014</b>										
January	9,879	256	10,135	14,755	578	15,333	17,840	570	18,410	<b>-3,077</b>
February	7,030	177	7,207	9,693	390	10,083	12,211	460	12,671	<b>-2,588</b>
March	8,002	118	8,120	10,853	447	11,300	11,091	598	11,689	<b>-369</b>
April	9,301	146	9,447	12,454	812	13,266	11,805	954	12,759	<b>507</b>
May	10,225	272	10,497	13,876	578	14,454	13,437	699	14,136	<b>318</b>
June	11,475	309	11,784	14,645	682	15,327	14,000	781	14,781	<b>546</b>
July	12,743	437	13,180	15,507	743	16,250	...	...	...	...
August	12,714	326	13,040	15,285	603	15,888	...	...	...	...
September	11,216	287	11,503	14,083	523	14,606	...	...	...	...
<b>October /1</b>	<b>9,983</b>	<b>78</b>	<b>10,061</b>	<b>12,767</b>	<b>414</b>	<b>13,181</b>	...	...	...	...

**Source :** Ministry of the Prime Minister and Cabinet- Immigration Division; Ministry for Revenue- Customs Division and Samoa Bureau of Statistics.

1: Provisional figures

Denote not yet available



Table 2: Total Arrivals by Age, Purpose of Entry and Gender, October 2014 <sup>1</sup>

Age	Purpose of Entry																	
	Total			Visitors			Returning Residents			Transit			Temporary Residents			Others		
	Total	Male	Female	Total	Male	Female	Total	Male	Female	Total	Male	Female	Total	Male	Female	Total	Male	Female
<b>Total</b>	<b>13,181</b>	<b>6,868</b>	<b>6,313</b>	<b>9,063</b>	<b>4,521</b>	<b>4,542</b>	<b>3,120</b>	<b>1,732</b>	<b>1,388</b>	<b>613</b>	<b>391</b>	<b>222</b>	<b>116</b>	<b>69</b>	<b>47</b>	<b>269</b>	<b>155</b>	<b>114</b>
0 - 4	562	309	253	392	212	180	137	83	54	20	8	12	4	3	1	9	3	6
5 - 9	425	211	214	350	170	180	59	30	29	10	7	3	0	0	0	6	4	2
10 - 14	410	212	198	321	170	151	63	27	36	19	11	8	3	2	1	4	2	2
15 - 19	479	229	250	336	151	185	106	54	52	12	5	7	5	5	0	20	14	6
20 - 24	894	439	455	555	244	311	258	149	109	43	28	15	20	10	10	18	8	10
25 - 29	1,187	583	604	812	370	442	274	152	122	64	37	27	12	7	5	25	17	8
30 - 34	1,130	601	529	779	384	395	263	159	104	58	40	18	5	2	3	25	16	9
35 - 39	1,021	530	491	671	329	342	250	143	107	68	43	25	4	2	2	28	13	15
40 - 44	1,169	624	545	734	364	370	318	183	135	93	61	32	7	4	3	17	12	5
45 - 49	1,247	657	590	858	425	433	286	171	115	69	44	25	12	7	5	22	10	12
50 - 54	1,231	654	577	851	448	403	303	154	149	51	33	18	6	5	1	20	14	6
55 - 59	1,145	610	535	793	415	378	275	144	131	47	33	14	13	8	5	17	10	7
60 - 64	876	490	386	597	326	271	214	121	93	35	26	9	9	6	3	21	11	10
65 - 69	714	354	360	515	251	264	159	82	77	14	8	6	9	3	6	17	10	7
70 - 74	398	216	182	291	158	133	85	43	42	7	5	2	3	2	1	12	8	4
75 +	293	149	144	208	104	104	70	37	33	3	2	1	4	3	1	8	3	5
<b>% Distribution <sup>2</sup></b>	<b>100</b>	<b>52.1</b>	<b>47.9</b>	<b>68.8</b>	<b>34.3</b>	<b>34.5</b>	<b>23.7</b>	<b>13.1</b>	<b>10.5</b>	<b>4.7</b>	<b>3.0</b>	<b>1.7</b>	<b>0.9</b>	<b>0.5</b>	<b>0.4</b>	<b>2.0</b>	<b>1.2</b>	<b>0.9</b>

**Source:** Ministry of the Prime Minister and Cabinet - Immigration Division; Ministry for Revenue - Customs Division and Samoa Bureau of Statistics.

1: Provisional figures

2: Figures are subject to rounding errors

**Note:** The Purpose of Entry categories of Temporary Residents and Others were introduced as a result of the introduction of the new arrival card

Table 3: Total Visitors Arrivals by Country of Usual Residents and Mode of Travel, October 2014 <sup>1</sup>

Country of Usual Residence	Mode of Travel			Percentage (%) <sup>2</sup>
	Air	Sea	Total	
<b>OCEANIA</b>	<b>8,578</b>	<b>64</b>	<b>8,642</b>	<b>85.9</b>
American Samoa	1210	17	1,227	12.2
Fiji	214	2	216	2.1
Cook Island	12	0	12	0.1
Other Pacific Is	226	15	241	2.4
New Zealand	4599	20	4,619	45.9
Australia	2317	10	2,327	23.1
<b>EUROPE</b>	<b>195</b>	<b>0</b>	<b>195</b>	<b>1.9</b>
United Kingdom	59	0	59	0.6
Scandinavia	8	0	8	0.1
Benelux	5	0	5	0.0
Germany	84	0	84	0.8
Other Europe	39	0	39	0.4
<b>AMERICA</b>	<b>619</b>	<b>8</b>	<b>627</b>	<b>6.2</b>
U.S.A	598	8	606	6.0
Canada	21	0	21	0.2
<b>ASIA</b>	<b>320</b>	<b>0</b>	<b>320</b>	<b>3.2</b>
Japan	37	0	37	0.4
China	218	0	218	2.2
Korea	8	0	8	0.1
Other Asia	57	0	57	0.6
<b>OTHERS</b>	<b>271</b>	<b>6</b>	<b>277</b>	<b>2.8</b>
<b>TOTAL</b>	<b>9,983</b>	<b>78</b>	<b>10,061</b>	
<b>PERCENTAGE DISTRIBUTION</b>	<b>99.2</b>	<b>1.5%</b>	<b>100%</b>	<b>100%</b>

**Source:** Ministry of the Prime Minister and Cabinet- Immigration Division; Ministry for Revenue- Customs Division and Samoa Bureau of Statistics.

1: Provisional figures.

2: Figures are subject to rounding errors

**Note:** (i) Visitors refer to all person visiting Samoa other than returning residents and also expatriates who are employed and living in Samoa (**include transit**).

(ii) Visitors also include Samoan citizens whose country of usual residence are country abroad.

(iii) **Scandinavia**- refers to countries of Norway, Sweden, Finland and Denmark.

(iv) **Benelux:** - refers to countries of Belgium, Netherlands and Luxembourg.

(v) **Exclude Cruise Liner Passengers.**



Table 4: Total Visitors by Usual Residence and Purpose of Visit, October 2014 <sup>1</sup>

Usual Residence	Purpose of Visit								
	Total	Percentage <sup>2</sup>	Holiday/ Vacation	Business/ Conference	Visit Friends/ Relatives	Sports	Transit	Others	Not Stated
<b>OCEANIA</b>	<b>8,642</b>	<b>85.9</b>	<b>3,417</b>	<b>604</b>	<b>3,117</b>	<b>111</b>	<b>434</b>	<b>439</b>	<b>520</b>
American Samoa	1,227	12.2	157	69	464	31	185	102	219
Fiji	216	2.1	16	84	40	5	31	31	9
Cook Island	12	0.1	0	1	2	8	0	0	1
Other Pacific Is	241	2.4	15	42	53	22	67	29	13
New Zealand	4,619	45.9	2,281	287	1,593	22	101	185	150
Australia	2,327	23.1	948	121	965	23	50	92	128
<b>EUROPE</b>	<b>195</b>	<b>1.9</b>	<b>144</b>	<b>22</b>	<b>11</b>	<b>1</b>	<b>6</b>	<b>3</b>	<b>8</b>
United Kingdom	59	0.6	33	18	3	0	3	1	1
Scandinavia	8	0.1	5	2	0	0	0	1	0
Benelux	5	0.0	3	0	0	0	0	0	2
Germany	84	0.8	75	0	1	0	2	1	5
Other Europe	39	0.4	28	2	7	1	1	0	0
<b>AMERICA</b>	<b>627</b>	<b>6.2</b>	<b>259</b>	<b>52</b>	<b>142</b>	<b>4</b>	<b>20</b>	<b>124</b>	<b>26</b>
U.S.A.	606	6.0	247	48	140	4	19	122	26
Canada	21	0.2	12	4	2	0	1	2	0
<b>ASIA</b>	<b>320</b>	<b>3.2</b>	<b>100</b>	<b>50</b>	<b>24</b>	<b>2</b>	<b>104</b>	<b>15</b>	<b>25</b>
Japan	37	0.4	11	11	8	1	1	2	3
China	218	2.2	73	33	12	0	70	11	19
Korea	8	0.1	5	2	0	1	0	0	0
Other Asia	57	0.6	11	4	4	0	33	2	3
<b>OTHER COUNTRIES</b>	<b>277</b>	<b>2.8</b>	<b>152</b>	<b>20</b>	<b>31</b>	<b>1</b>	<b>49</b>	<b>11</b>	<b>13</b>
<b>TOTAL</b>	<b>10,061</b>	<b>100</b>	<b>4,072</b>	<b>748</b>	<b>3,325</b>	<b>119</b>	<b>613</b>	<b>592</b>	<b>592</b>
<b>Percentage Distribution <sup>2</sup></b>	<b>100</b>		<b>40.5</b>	<b>7.4</b>	<b>33.0</b>	<b>1.2</b>	<b>6.1</b>	<b>5.9</b>	<b>5.9</b>

**Source:** Ministry of the Prime Minister and Cabinet- Immigration Division; Ministry for Revenue- Customs Division and Samoa Bureau of Statistics.

**Note :** Sports was re-introduced again in the Purpose of Visit Category as of August 2008.

1: Provisional figures

Table 5: Total Arrivals by Carrier and Purpose of Entry, October 2014 <sup>1</sup>

Carrier	Total	Purpose of Entry				
		Returning Residents	Percentage <sup>2</sup>	Visitors	Percentage <sup>2</sup>	
<b>Total</b>	<b>13,181</b>	<b>100%</b>	<b>3,120</b>	<b>23.7</b>	<b>10,061</b>	<b>76.3</b>
<b>AIR</b>						
Virgin Samoa <sup>3</sup>	<b>5,168</b>	<b>39.2</b>	1070	8.1	4,098	31.1
Polynesian	<b>2,364</b>	<b>17.9</b>	721	5.5	1,643	12.5
Inter Island	<b>19</b>	<b>0.1</b>	8	0.1	11	0.1
Air New Zealand	<b>3,679</b>	<b>27.9</b>	687	5.2	2,992	22.7
Fiji Airways <sup>4</sup>	<b>1,301</b>	<b>9.9</b>	289	2.2	1,012	7.7
Other Air Carrier	<b>236</b>	<b>1.8</b>	9	0.0	227	1.7
<b>SEA</b>						
Lady Naomi	<b>352</b>	<b>2.7</b>	315	2.4	37	0.3
Yacht	<b>62</b>	<b>0.5</b>	21	0.2	41	0.3
Other Sea Carrier	<b>0</b>	<b>0.0</b>	0	0.0	0	0.0

**Source:** Ministry of the Prime Minister and Cabinet- Immigration Division; Ministry for Revenue-Customs Division and Samoa Bureau of Statistics.

**Note:** Total visitors include transit.

- 1: Provisional figures
- 2: Figures are subject to rounding errors
- 3: Polynesian Blue is now called Virgin Samoa
- 4: Air Pacific is now called Fiji Airways

Table 6: Visitors by Duration of Stay and Place of Stay, October 2014 <sup>1</sup>

Duration of Stay	Place of Stay			
	Total	Hotel/Motel	Private	Not Stated
<b>Total</b>	<b>9,448</b>	<b>3,681</b>	<b>5,039</b>	<b>728</b>
1day	209	84	111	14
2days	498	374	108	16
3days	423	172	222	29
4days	444	194	221	29
5days	617	341	239	37
6days	538	321	176	41
7days	1,506	667	759	80
8-14days	2,981	1,235	1,552	194
15-30days	898	120	738	40
31-60days	181	21	147	13
61-90days	80	6	65	9
91-180days	38	2	34	2
181-365days	12	2	8	2
Not Stated	1023	142	659	222
<b>Percentage Distribution <sup>2</sup></b>	<b>100</b>	<b>39.0</b>	<b>53.3</b>	<b>7.7</b>

**Source:** Ministry of the Prime Minister and Cabinet- Immigration Division,  
Ministry for Revenue- Customs Division and Samoa Bureau of Statistics.

**Note:** Visitors here, exclude transit.

1: Provisional figures

2: Figures are subject to rounding errors