



Please address all correspondence to the Government Statistician  
 In reply, please quote the file reference

File Ref: IAS 05/13

# GOVERNMENT OF SAMOA SAMOA BUREAU OF STATISTICS

## International Arrival Statistics May 2014

### HIGHLIGHTS OF THE MONTH

In May 2014 compared with May 2013

- ❖ Total arrivals (14,369) increased by 11.6 percent
- ❖ Total visitors (10,443) increased by 11.0 percent
- ❖ More visitors arrived from Australia (up by 456) and New and Zealand (up by 444), but fewer arrived from American Samoa (down by 127) and USA (down by 25).

May 2014	Number	Change from previous month	Change from previous year
All Arrivals	14,369	8.3%	11.6%
All Visitors	10,443	10.5%	11.0%

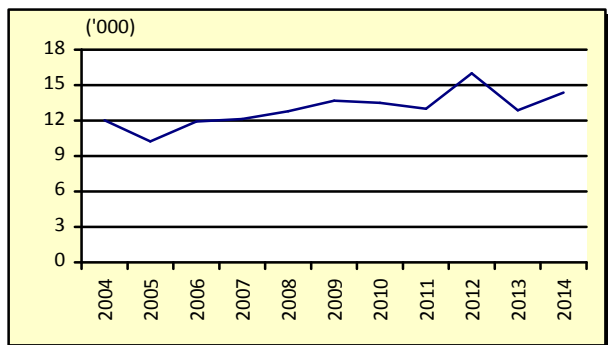
### OVERVIEW

#### 1. TOTAL ARRIVALS

The total International Arrival Statistics recorded for the month of **May 2014** (table 1), revealed an increase of 8.3 percent over the previous month of April as well as an increase of 11.6 percent over the corresponding month of May 2013. (Refer Fig. 1)

Air was the preferred mode of travel to Samoa, representing 96.0 percent (13,798) of total arrivals, while the remaining 4.0 percent (571) arrived by sea.

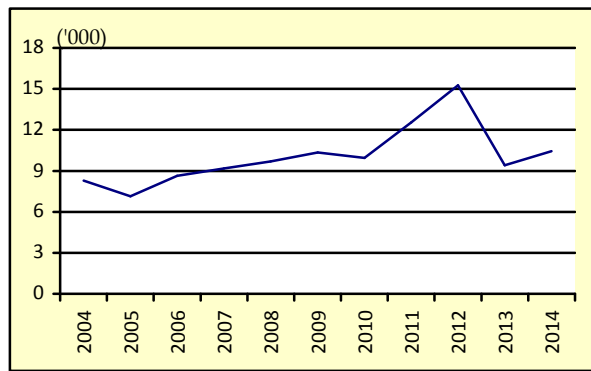
Fig. 1: May Total Arrivals, 2004 - 2013



#### 2. TOTAL VISITORS

Overall Visitors numbered 10,443 for the month under review revealed an increase of 10.5 percent over the previous month of April and an increase of 11.0 percent when compared to the corresponding month of May 2013. (Refer Fig. 2).

Fig. 2: May Total Visitors, 2004 - 2014



Visitors' arrivals have a strong seasonal pattern with a regular peak of numbers during holiday seasons normally from December to January. Graph 2 in the Appendix shows the smooth-term trend for visitor for arrivals, adjusting for seasonal pattern and for the outliers (unusual pattern of arrivals) for May and June 2012 during Samoa's 50<sup>th</sup> Anniversary.

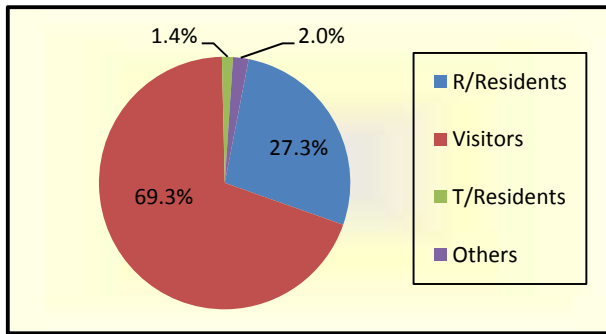
#### 3. TOTAL ARRIVALS BY PURPOSE OF ENTRY

Visitors, including transit made up the largest component of all arrivals with 35.7 percent (5,135) being males and 33.6 percent (4,824) being females.

Returning residents made up 27.3 percent of total arrivals (3,926) with 16.4 percent (2,352) being male and 11.0 percent (1,574) being female.

Additionally, temporary residents made up 1.4 percent of total arrivals (184) with 0.8 percent (111) being males and 0.6 percent (83) being females. Other purposes of entry made up the remainder of the total arrivals with 2.0 percent (290). (Refer Fig.3)

**Fig. 3: Total Arrivals, by Purpose of Visit**

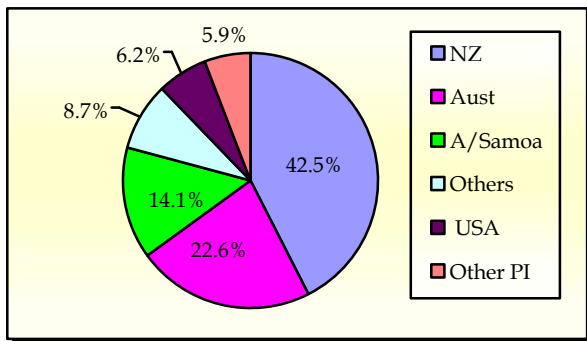


**4. VISITORS BY COUNTRY OF USUAL RESIDENCE**

New Zealand remains as the leading country in visitors' arrival by country of usual residence (Table 3) accounting for 42.5 percent or 4,442 of total visitors, compared to 42.7 percent or 4,031 visitors reported in the previous month. Australia followed next with a 22.6 percent share (2,360) compared to 23.8 percent or 2,246 visitors reported in the previous month.

American Samoa represented 14.1 percent (1,476) in May 2014 compared to 14.9 percent or 1,409 visitors in the previous month and the United States of America remains the smallest of the principal source markets with a share of 6.2 percent (649) compared to 5.3 percent or 504 visitors reported in the previous month. (Refer Fig. 4)

**Fig. 4: Total Visitors, by Country of Usual Residence**

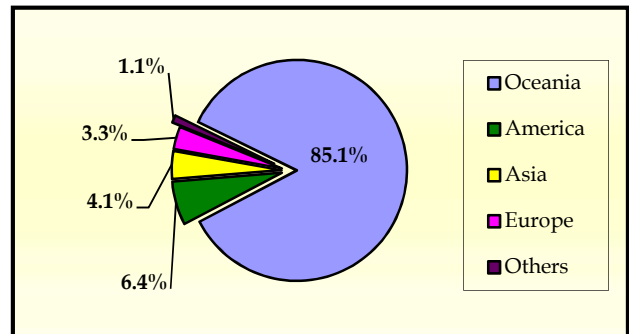


**5. VISITORS BY REGION**

The Oceanic Region had the highest share of total visitors with 85.1 percent compared to 85.6 percent reported in May 2013, followed by America with 6.4 percent (7.5 percent in May 2013).

Asia represented 4.0 percent of total visitors compared with 3.6 percent reported in May of the previous year, while Europe represented the lowest share with 3.3 percent compared to 2.9 percent reported in May 2013. (Refer Fig. 5).

**Fig. 5: Total Visitors, by Region**



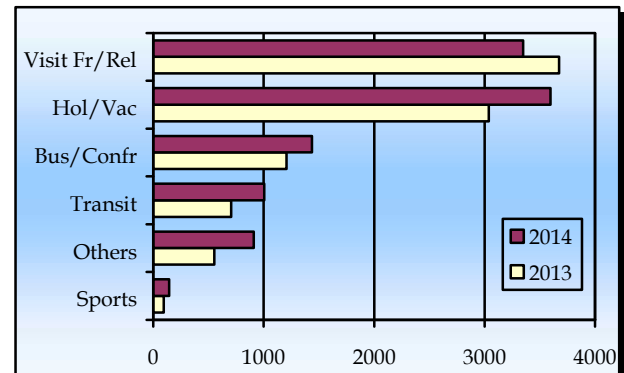
**6. VISITORS BY PURPOSE OF VISIT**

The principal source markets (table 4) namely New Zealand, American Samoa, Australia, and the United States of America constitute 85.4 percent of all visitors visiting Samoa in May 2014.

Visitors that were on holiday/ vacation accounted for 34.5 percent of all visitors while those that were here to visit friends and relatives accounted for 32.1 percent of total visitors.

Business and Conference visitors made up 13.8 percent and those who were here in transit to other destinations made up 9.6 percent of all visitors. Fig.6 depicts total visitors by purpose of visit for May 2013 and May 2014.

**Fig. 6: Total Visitors, by Purpose of Visit**



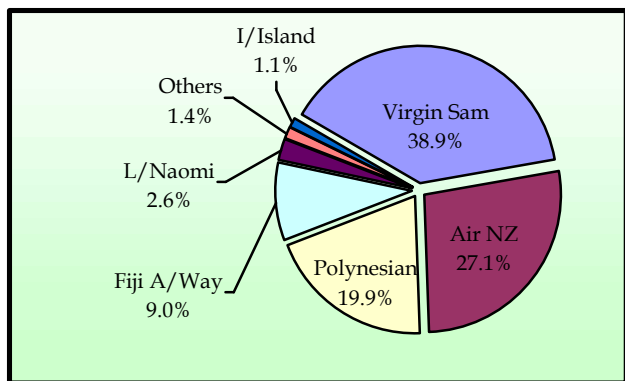
**7. TOTAL ARRIVALS BY CARRIER**

As depicted in table 5, Virgin Samoa, formerly known as Polynesian Blue, leads the way of arrival by carriers' during the reference period with a 38.9 percent share (5,583 passengers) followed by Air New Zealand with a 27.1 percent share (3,892 passengers).

Polynesian Airlines brought in 19.9 percent (2,864) of total arrivals while Fiji Airways recorded a share of 9.0 percent (1,296).

Fig. 7 illustrates total arrivals by carrier during the reference period.

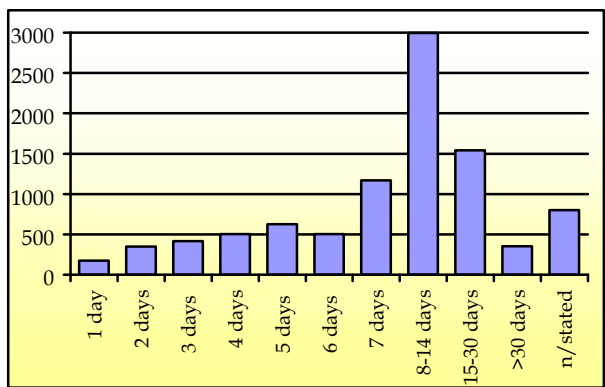
**Fig. 7: Total Arrivals by Carrier**



**8. VISITORS DURATION AND PLACE OF STAY**

The usual visitor's (not including transit) duration of stay in Samoa (Table 6) is between seven and thirty days, as shown in Fig. 8.

**Fig. 8: Total Visitors (not including Transit) by Duration of Stay**



Most visitors (64.0 percent or 6,037 visitors) reported staying in private accommodation or with families/ relatives and 34.3 percent (3,236) stayed in hotels/ motels. The remaining 1.7 percent or 164 visitors did not state their place of stay. (Refer Fig. 9).

**Fig. 9: Total Visitors by Place of Stay**

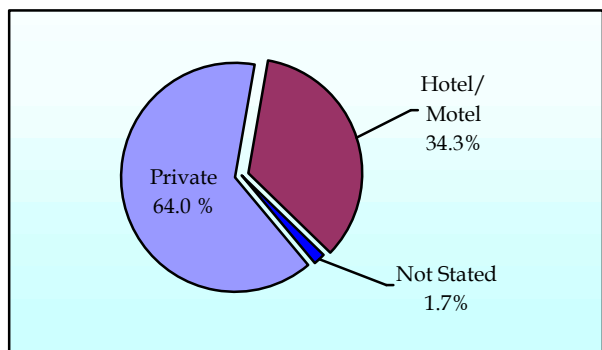
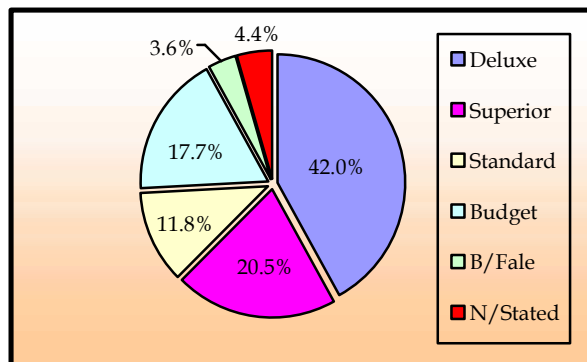


Fig. 10 portrays the number of visitors (including transit) who stayed in hotels/ motels (3,384) by type of accommodation (hotel/ motel), within the reference month.

**Fig. 10: Visitors (transit included) Staying in Hotels/ Motels by Type of Accommodation**



Detailed information for the reference period is attached in Tables 1 – 6 and the appendix shows longer time series.

**BACKGROUND**

The sourced documents for the compilation of International Arrival Statistics are the immigration arrival and departure card forms.

These forms are completed by all incoming and outgoing travelers at the three local points of entry namely (1) Apia wharf (2) Faleolo and (3) Fagalii international airports.

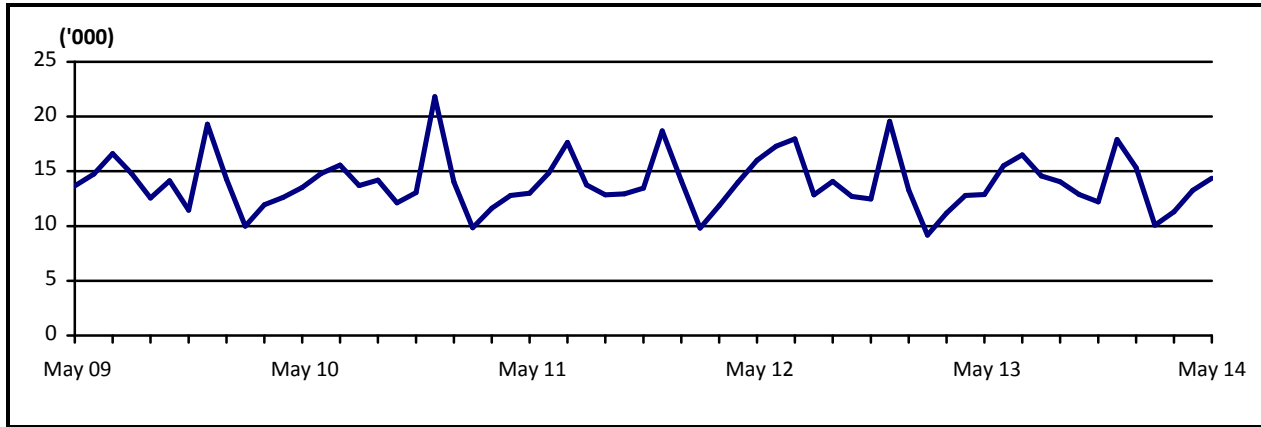
International arrival statistics are compiled on a monthly, quarterly and annual basis. These reports can also be extracted from our website: [www.sbs.gov.ws](http://www.sbs.gov.ws)

**The migration report for the month of June 2014 will be released on the 21<sup>st</sup> of July 2014.**

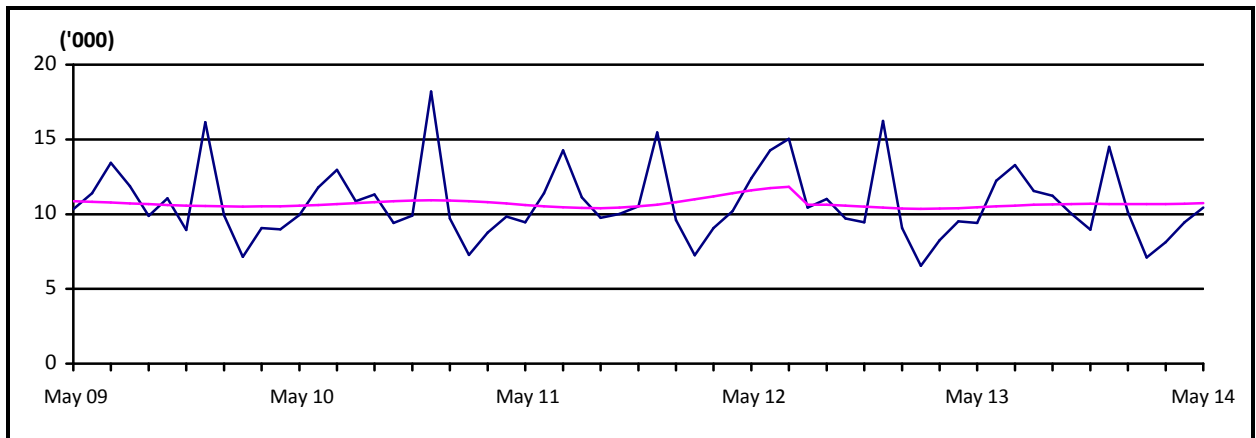
**Muagututi'a Sefuiva Reupena  
GOVERNMENT STATISTICIAN**

**APPENDIX**

Graph 1: Monthly Total Arrivals, May 2009 – May 2014



Graph 2: Monthly Total Visitors, May 2009 – May 2014



Graph 3: Visitors Percentage Change over Previous month, May 2009 – May 2014

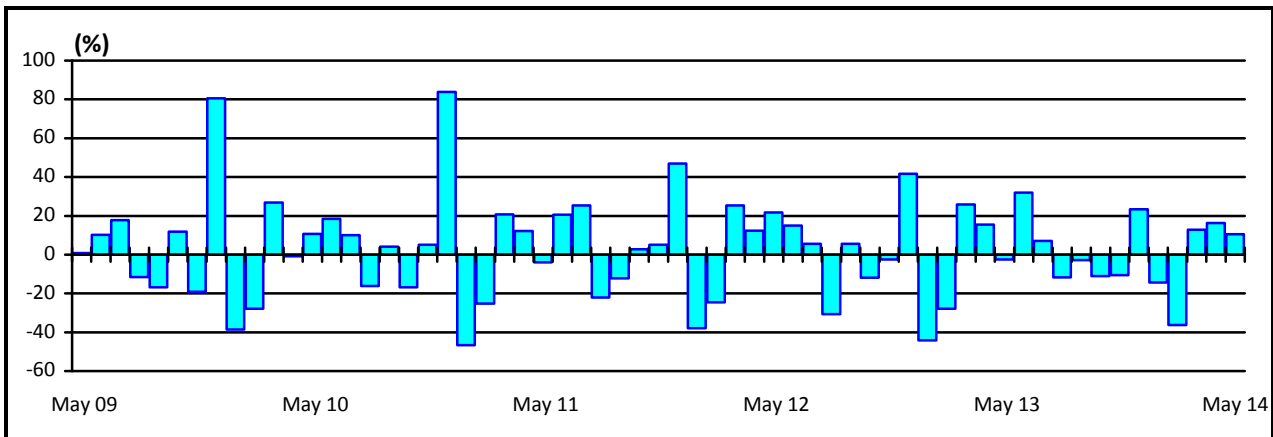


Table 1: Monthly Arrival and Departure by Mode of Tavel and Net Migration, 2004 - 2014.

Period	Visitors Arrivals			Total Arrivals			Total Departures			Net
	Air	Sea	Total	Air	Sea	Total	Air	Sea	Total	Migration
<b>2004</b>	93,946	4,209	<b>98,155</b>	129,517	11,864	<b>141,381</b>	131,277	12,303	<b>143,580</b>	<b>-2,199</b>
<b>2005</b>	98,544	3,263	<b>101,807</b>	132,200	10,557	<b>142,757</b>	135,008	10,936	<b>145,944</b>	<b>-3,187</b>
<b>2006</b>	112,411	3,471	<b>115,882</b>	147,807	9,349	<b>157,156</b>	147,991	9,489	<b>157,480</b>	<b>-324</b>
<b>2007</b>	118,653	3,703	<b>122,356</b>	150,584	7,635	<b>158,219</b>	158,099	8,578	<b>166,677</b>	<b>-8,458</b>
<b>2008</b>	118,459	3,743	<b>122,202</b>	151,883	8,628	<b>160,511</b>	161,482	9,908	<b>171,390</b>	<b>-10,879</b>
<b>2009</b>	127,327	1,978	<b>129,305</b>	161,816	5,095	<b>166,911</b>	156,319	6,069	<b>162,388</b>	<b>4,523</b>
<b>2010</b>	126,970	2,530	<b>129,500</b>	162,052	5,539	<b>167,591</b>	164,426	6,326	<b>170,752</b>	<b>-3,161</b>
<b>2011</b>	124,706	2,898	<b>127,604</b>	159,660	5,738	<b>165,398</b>	163,605	6,216	<b>169,821</b>	<b>-4,423</b>
<b>2012</b>	131,945	2,749	<b>134,694</b>	167,211	5,509	<b>172,720</b>	167,842	6,297	<b>174,139</b>	<b>-1,419</b>
<b>2013</b>	122,171	2,502	<b>124,673</b>	157,542	5,335	<b>162,877</b>	162,333	5,885	<b>168,218</b>	<b>-5,341</b>
<b>2014</b>	<b>44,389</b>	<b>963</b>	<b>45,352</b>	<b>61,553</b>	<b>2,798</b>	<b>64,351</b>	...	...	...	...
<b>2011</b>										
May	9,234	214	9,448	12,543	444	12,987	12,718	394	13,112	<b>-125</b>
June	11,125	267	11,392	14,192	632	14,824	12,437	752	13,189	<b>1,635</b>
July	14,009	260	14,269	17,124	525	17,649	17,000	374	17,374	<b>275</b>
August	10,899	219	11,118	13,383	372	13,755	14,332	638	14,970	<b>-1,215</b>
September	9,570	187	9,757	12,382	458	12,840	12,452	504	12,956	<b>-116</b>
October	9,868	150	10,018	12,646	298	12,944	13,028	353	13,381	<b>-437</b>
November	10,224	302	10,526	12,946	508	13,454	11,918	566	12,484	<b>970</b>
December	15,072	396	15,468	17,961	738	18,699	14,437	535	14,972	<b>3,727</b>
<b>2012</b>										
January	9,480	133	9,613	13,878	267	14,145	18,055	554	18,609	<b>-4,464</b>
February	7,033	212	7,245	9,453	369	9,822	12,300	449	12,749	<b>-2,927</b>
March	8,926	152	9,078	11,504	359	11,863	11,034	374	11,408	<b>455</b>
April	10,095	104	10,199	13,157	820	13,977	12,989	1,012	14,001	<b>-24</b>
May	11,908	502	12,410	15,264	730	15,994	11,514	485	11,999	<b>3,995</b>
June	13,883	379	14,262	16,747	535	17,282	16,316	849	17,165	<b>117</b>
July	14,913	135	15,048	17,705	261	17,966	18,995	319	19,314	<b>-1,348</b>
August	10,228	205	10,433	12,509	334	12,843	13,921	453	14,374	<b>-1,531</b>
September	10,749	267	11,016	13,653	422	14,075	13,743	329	14,072	<b>3</b>
October	9,604	97	9,701	12,378	330	12,708	13,764	460	14,224	<b>-1,516</b>
November	9,190	266	9,456	11,943	539	12,482	11,369	395	11,764	<b>718</b>
December	15,936	297	16,233	19,020	543	19,563	13,842	618	14,460	<b>5,103</b>
<b>2013</b>										
January	8,821	259	9,080	12,952	334	13,286	16,397	649	17,046	<b>-3,760</b>
February	6,386	161	6,547	8,756	407	9,163	12,210	515	12,725	<b>-3,562</b>
March	8,086	160	8,246	10,776	399	11,175	9,612	438	10,050	<b>1,125</b>
April	9,351	165	9,516	12,325	453	12,778	12,576	653	13,229	<b>-451</b>
May	9,216	190	9,406	12,496	375	12,871	11,492	606	12,098	<b>773</b>
June	12,027	296	12,323	14,964	537	15,501	13,660	460	14,120	<b>1,381</b>
July	13,067	207	13,274	15,901	593	16,494	16,442	464	16,906	<b>-412</b>
August	11,380	175	11,555	14,046	535	14,581	15,063	536	15,599	<b>-1,018</b>
September	11,016	211	11,227	13,741	293	14,034	13,844	349	14,193	<b>-159</b>
October	9,828	207	10,035	12,512	361	12,873	14,773	158	14,931	<b>-2,058</b>
November	8,768	189	8,957	11,753	453	12,206	12,082	553	12,635	<b>-429</b>
December	14,225	282	14,507	17,320	595	17,915	14,182	504	14,686	<b>3,229</b>
<b>2014</b>										
January	9,879	256	10,135	14,755	578	15,333	<b>17,840</b>	<b>570</b>	<b>18,410</b>	<b>-3,077</b>
February	7,030	177	7,207	9,693	390	10,083	<b>12,211</b>	<b>460</b>	<b>12,671</b>	<b>-2,588</b>
March	8,002	118	8,120	10,853	447	11,300	...	...	...	...
April	9,301	146	9,447	12,454	812	13,266	...	...	...	...
<b>May /1</b>	<b>10,177</b>	<b>266</b>	<b>10,443</b>	<b>13,798</b>	<b>571</b>	<b>14,369</b>	...	...	...	...

**Source :** Ministry of the Prime Minister and Cabinet- Immigration Division; Ministry for Revenue- Customs Division and Samoa Bureau of Statistics.

1: Provisional figures

... Denote not yet available

Table 2: Total Arrivals by Age, Purpose of Entry and Gender, May 2014 <sup>1</sup>

Age	Purpose of Entry																	
	Total			Visitors			Returning Residents			Transit			Temporary Residents			Others		
	Total	Male	Female	Total	Male	Female	Total	Male	Female	Total	Male	Female	Total	Male	Female	Total	Male	Female
<b>Total</b>	<b>14,369</b>	<b>7,760</b>	<b>6,609</b>	<b>8,953</b>	<b>4,485</b>	<b>4,468</b>	<b>3,926</b>	<b>2,352</b>	<b>1,574</b>	<b>1,006</b>	<b>650</b>	<b>356</b>	<b>194</b>	<b>111</b>	<b>83</b>	<b>290</b>	<b>162</b>	<b>128</b>
0 - 4	559	269	290	385	187	198	130	60	70	29	17	12	7	3	4	8	2	6
5 - 9	403	199	204	298	147	151	80	39	41	13	7	6	9	4	5	3	2	1
10 - 14	302	139	163	219	93	126	56	35	21	19	8	11	2	1	1	6	2	4
15 - 19	491	251	240	290	134	156	141	75	66	42	33	9	4	1	3	14	8	6
20 - 24	1,100	590	510	644	284	360	339	235	104	82	49	33	19	9	10	16	13	3
25 - 29	1,360	745	615	841	374	467	375	267	108	92	68	24	17	12	5	35	24	11
30 - 34	1,256	711	545	740	373	367	385	256	129	96	62	34	14	11	3	21	9	12
35 - 39	1,119	643	476	671	347	324	320	207	113	87	61	26	23	17	6	18	11	7
40 - 44	1,320	747	573	788	403	385	373	239	134	117	86	31	12	4	8	30	15	15
45 - 49	1,356	727	629	816	421	395	384	222	162	110	64	46	19	8	11	27	12	15
50 - 54	1,466	773	693	950	479	471	379	213	166	99	60	39	15	9	6	23	12	11
55 - 59	1,305	725	580	822	453	369	337	178	159	100	64	36	17	12	5	29	18	11
60 - 64	947	501	446	618	325	293	226	115	111	53	35	18	14	7	7	36	19	17
65 - 69	742	403	339	490	265	225	194	108	86	34	16	18	10	5	5	14	9	5
70 - 74	377	206	171	239	132	107	103	51	52	19	13	6	8	6	2	8	4	4
75 +	266	131	135	142	68	74	104	52	52	14	7	7	4	2	2	2	2	0
<b>% Distribution <sup>2</sup></b>	<b>100</b>	<b>54.0</b>	<b>46.0</b>	<b>62.3</b>	<b>31.2</b>	<b>31.1</b>	<b>27.3</b>	<b>16.4</b>	<b>11.0</b>	<b>7.0</b>	<b>4.5</b>	<b>2.5</b>	<b>1.4</b>	<b>0.8</b>	<b>0.6</b>	<b>2.0</b>	<b>1.1</b>	<b>0.9</b>

**Source:** Ministry of the Prime Minister and Cabinet - Immigration Division; Ministry for Revenue - Customs Division and Samoa Bureau of Statistics.

1: Provisional figures

2: Figures are subject to rounding errors

**Note:** The Purpose of Entry categories of Temporary Residents and Others were introduced as a result of the introduction of the new arrival card

Table 3: Total Visitors Arrivals by Country of Usual Residents and Mode of Travel, May 2014 <sup>1</sup>

Country of Usual Residence	Mode of Travel			Percentage (%) <sup>2</sup>
	Air	Sea	Total	
<b>OCEANIA</b>	<b>8,690</b>	<b>201</b>	<b>8,891</b>	<b>85.1</b>
American Samoa	1444	32	1,476	14.1
Fiji	243	5	248	2.4
Cook Island	13	0	13	0.1
Other Pacific Is	244	108	352	3.4
New Zealand	4396	46	4,442	42.5
Australia	2350	10	2,360	22.6
<b>EUROPE</b>	<b>338</b>	<b>9</b>	<b>347</b>	<b>3.3</b>
United Kingdom	81	4	85	0.8
Scandinavia	7	0	7	0.1
Benelux	3	0	3	0.0
Germany	154	0	154	1.5
Other Europe	93	5	98	0.9
<b>AMERICA</b>	<b>641</b>	<b>32</b>	<b>673</b>	<b>6.4</b>
U.S.A	617	32	649	6.2
Canada	24	0	24	0.2
<b>ASIA</b>	<b>404</b>	<b>13</b>	<b>417</b>	<b>4.0</b>
Japan	39	2	41	0.4
China	156	1	157	1.5
Korea	3	0	10	0.1
Other Asia	206	10	216	2.1
<b>OTHERS</b>	<b>104</b>	<b>11</b>	<b>115</b>	<b>1.1</b>
<b>TOTAL</b>	<b>10,177</b>	<b>266</b>	<b>10,443</b>	
<b>PERCENTAGE DISTRIBUTION</b>	<b>97.5</b>	<b>1.5%</b>	<b>100%</b>	<b>100%</b>

**Source:** Ministry of the Prime Minister and Cabinet- Immigration Division; Ministry for Revenue- Customs Division and Samoa Bureau of Statistics.

1: Provisional figures.

2: Figures are subject to rounding errors

**Note:** (i) Visitors refer to all person visiting Samoa other than returning residents and also expatriates who are employed and living in Samoa (**include transit**).

(ii) Visitors also include Samoan citizens whose country of usual residence are country abroad.

(iii) **Scandinavia**- refers to countries of Norway, Sweden, Finland and Denmark.

(iv) **Benelux:** - refers to countries of Belgium, Netherlands and Luxembourg.

(v) **Exclude Cruise Liner Passengers.**

Table 4: Total Visitors by Usual Residence and Purpose of Visit, May 2014 <sup>1</sup>

Usual Residence	Purpose of Visit								
	Total	Percentage <sup>2</sup>	Holiday/ Vacation	Business/ Conference	Visit Friends/ Relatives	Sports	Transit	Others	Not Stated
<b>OCEANIA</b>	<b>8,891</b>	<b>85.1</b>	<b>2,956</b>	<b>1,254</b>	<b>3,061</b>	<b>132</b>	<b>710</b>	<b>404</b>	<b>374</b>
American Samoa	1,476	14.1	240	116	532	61	337	91	99
Fiji	248	2.4	16	91	31	35	44	21	10
Cook Island	13	0.1	0	3	6	0	3	0	1
Other Pacific Is	352	3.4	17	106	41	0	130	29	29
New Zealand	4,442	42.5	1,784	613	1,547	24	131	184	159
Australia	2,360	22.6	899	325	904	12	65	79	76
<b>EUROPE</b>	<b>347</b>	<b>3.3</b>	<b>267</b>	<b>16</b>	<b>26</b>	<b>0</b>	<b>19</b>	<b>10</b>	<b>9</b>
United Kingdom	85	0.8	52	6	13	0	3	6	5
Scandinavia	7	0.1	6	0	1	0	0	0	0
Benelux	3	0.0	2	0	1	0	0	0	0
Germany	154	1.5	140	3	6	0	5	0	0
Other Europe	98	0.9	67	7	5	0	11	4	4
<b>AMERICA</b>	<b>673</b>	<b>6.4</b>	<b>221</b>	<b>95</b>	<b>211</b>	<b>10</b>	<b>74</b>	<b>31</b>	<b>31</b>
U.S.A.	649	6.2	208	92	207	10	72	30	30
Canada	24	0.2	13	3	4	0	2	1	1
<b>ASIA</b>	<b>417</b>	<b>4.0</b>	<b>121</b>	<b>69</b>	<b>32</b>	<b>0</b>	<b>162</b>	<b>16</b>	<b>17</b>
Japan	41	0.4	30	6	1	0	3	1	0
China	157	1.5	20	36	6	0	88	4	3
Korea	3	0.0	2	0	0	0	0	1	0
Other Asia	216	2.1	69	27	25	0	71	10	14
<b>OTHER COUNTRIES</b>	<b>115</b>	<b>1.1</b>	<b>33</b>	<b>3</b>	<b>19</b>	<b>1</b>	<b>41</b>	<b>9</b>	<b>9</b>
<b>TOTAL</b>	<b>10,443</b>	<b>100</b>	<b>3,598</b>	<b>1,437</b>	<b>3,349</b>	<b>143</b>	<b>1,006</b>	<b>470</b>	<b>440</b>
<b>Percentage Distribution <sup>2</sup></b>	<b>100</b>		<b>34.5</b>	<b>13.8</b>	<b>32.1</b>	<b>1.4</b>	<b>9.6</b>	<b>4.5</b>	<b>4.2</b>

**Source:** Ministry of the Prime Minister and Cabinet- Immigration Division; Ministry for Revenue- Customs Division and Samoa Bureau of Statistics.

**Note :** Sports was re-introduced again in the Purpose of Visit Category as of August 2008.

1: Provisional figures

2: Figures are subject to rounding errors



Table 5: Total Arrivals by Carrier and Purpose of Entry, May 2014 <sup>1</sup>

Carrier	Total	Purpose of Entry				
		Returning Residents	Percentage <sup>2</sup>	Visitors	Percentage <sup>2</sup>	
<b>Total</b>	<b>14,369</b>	<b>100%</b>	<b>3,926</b>	<b>27.3</b>	<b>10,443</b>	<b>72.7</b>
<b>AIR</b>						
Virgin Samoa <sup>3</sup>	<b>5,583</b>	<b>38.9</b>	1171	8.1	4,412	30.7
Polynesian	<b>2,864</b>	<b>19.9</b>	1029	7.2	1,835	12.8
Inter Island	<b>159</b>	<b>1.1</b>	39	0.3	120	0.8
Air New Zealand	<b>3,892</b>	<b>27.1</b>	1117	7.8	2,775	19.3
Fiji Airways <sup>4</sup>	<b>1,296</b>	<b>9.0</b>	264	1.8	1,032	7.2
Other Air Carrier	<b>4</b>	<b>0.0</b>	1	0.0	3	0.0
<b>SEA</b>						
Lady Naomi	<b>371</b>	<b>2.6</b>	245	1.7	126	0.9
Yacht	<b>0</b>	<b>0.0</b>	0	0.0	0	0.0
Other Sea Carrier	<b>200</b>	<b>1.4</b>	60	0.4	140	1.0

**Source:** Ministry of the Prime Minister and Cabinet- Immigration Division; Ministry for Revenue-Customs Division and Samoa Bureau of Statistics.

**Note:** Total visitors include transit.

- 1: Provisional figures
- 2: Figures are subject to rounding errors
- 3: Polynesian Blue is now called Virgin Samoa
- 4: Air Pacific is now called Fiji Airways

Table 6: Visitors by Duration of Stay and Place of Stay, May 2014 <sup>1</sup>

Duration of Stay	Place of Stay			
	Total	Hotel/Motel	Private	Not Stated
<b>Total</b>	<b>9,437</b>	<b>3,236</b>	<b>6,037</b>	<b>164</b>
1day	174	83	80	11
2days	348	212	131	5
3days	416	204	202	10
4days	503	191	294	18
5days	628	315	301	12
6days	505	305	196	4
7days	1171	586	566	19
8-14days	2995	1,027	1,939	29
15-30days	1542	203	1,320	19
31-60days	204	23	181	0
61-90days	84	6	77	1
91-180days	59	5	54	0
181-365days	6	2	4	0
Not Stated	802	74	692	36
<b>Percentage Distribution <sup>2</sup></b>	<b>100</b>	<b>34.3</b>	<b>64.0</b>	<b>1.7</b>

**Source:** Ministry of the Prime Minister and Cabinet- Immigration Division,  
Ministry for Revenue- Customs Division and Samoa Bureau of Statistics.

**Note:** Visitors here, exclude transit.

1: Provisional figures

2: Figures are subject to rounding errors