



Please address all correspondence to the Government Statistician  
 In reply, please quote the file reference

File Ref: IAS 02/14

# GOVERNMENT OF SAMOA SAMOA BUREAU OF STATISTICS

## International Arrival Statistics February 2014

### HIGHLIGHTS OF THE MONTH

In February 2014 compared with February 2013:

- ❖ Total arrivals (9,781) increased by 6.7 percent
- ❖ Total visitors (7,092) also increased by 8.3 percent
- ❖ More visitors arrived from Australia (up by 220), American Samoa (up by 140), New Zealand (up by 110) and American USA (up by 20).

February 2014	Number	Change from previous month	Change from previous year
All Arrivals	9,781	-36.2%	6.7%
All Visitors	7,092	-30.0%	8.3%

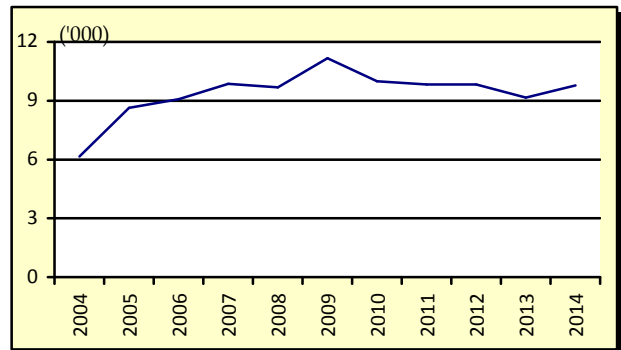
### OVERVIEW

#### 1. TOTAL ARRIVALS

The total International Arrival Statistics recorded for the month of **February 2014** (table 1), reveals a decrease of 36.2 percent over the previous month of January but an increase of 6.7 percent over the corresponding month of February 2013. (Refer Fig. 1)

Air was the preferred mode of travel to Samoa, representing 97.7 percent (9,555) of total arrivals, while the remaining 2.3 percent (226) arrived by sea in February 2014.

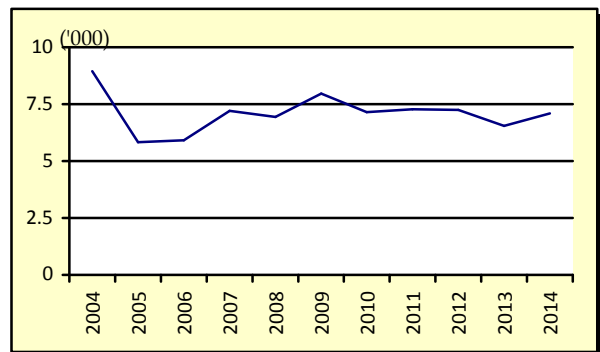
Fig. 1: February Total Arrivals, 2004 - 2014



#### 2. TOTAL VISITORS

Overall Visitors numbered 7,092 for the month under review reveals a decrease of 30.0 percent over the previous month but an increase of 8.3 percent when compared to the corresponding month of February 2013. (Refer Fig. 2).

Fig. 2: February Total Visitors, 2004 - 2014



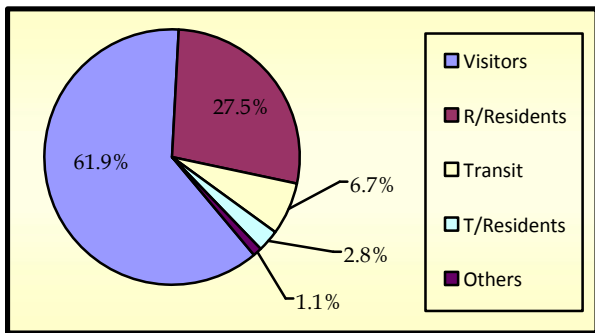
Visitor arrivals have a strong seasonal pattern with a regular peak of numbers during holiday seasons normally from December to January. The smoothed short-term trend for visitor arrivals adjusting for seasonal pattern is shown in Appendix Graph 2.

### 3. TOTAL ARRIVALS BY PURPOSE OF ENTRY

Visitors, including transit, made up the largest component of all arrivals with 36.7 percent (3,589) being males and 31.9 percent (3,122) being females.

Male and Female returning residents made up 14.6 (1,427) and 12.9 percent (1,262) respectively of total arrivals. Additionally, temporary residents made up 2.8 percent (271) of total arrivals with 1.5 percent (149) being males and 1.2 percent (122) being females. Other purposes of entry made up the remainder of the total arrivals with 1.1 percent (110). (Refer Fig. 3)

**Fig. 3: Total Arrivals, by Purpose of Visit**

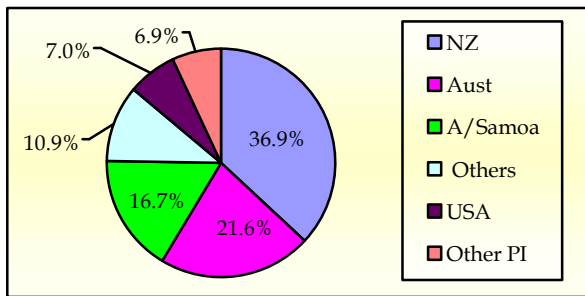


### 4. VISITORS BY COUNTRY OF USUAL RESIDENCE

New Zealand remains as the leading country in visitors' arrival by country of usual residence (Table 3) accounting for 36.9 percent or 2,615 of total visitors, compared to 43.1 percent or 4,307 visitors reported in the previous month. Australia followed next with a 21.6 percent share (1,533) compared to 24.6 percent or 2,465 visitors reported in the previous month.

American Samoa represented 16.7 percent (1,184) in February 2014 compared to 12.6 percent or 1,256 visitors in the previous month and the United States of America remains the smallest of the principal source markets with a share of 7.0 percent (499) compared to 6.2 percent or 616 visitors reported in the previous month. (Refer Fig. 4)

**Fig. 4: Total Visitors, by Country of Usual Residence**

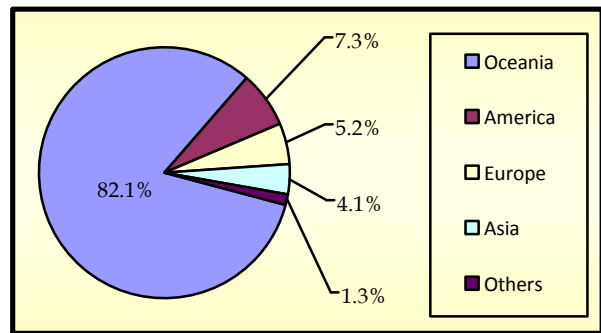


### 5. VISITORS BY REGION

The Oceanic Region had the highest share of total visitors with 82.1 percent compared to 86.2 percent reported in January 2013, followed by America with 7.3 percent (6.4 percent in January 2013).

Europe represented 5.2 percent of total visitors compared with 3.0 percent reported in the previous month, while Asia represented the lowest share with 4.1 percent compared with 3.7 reported in the previous month of January. (Refer Fig. 5).

**Fig. 5: Total Visitors, by Region**



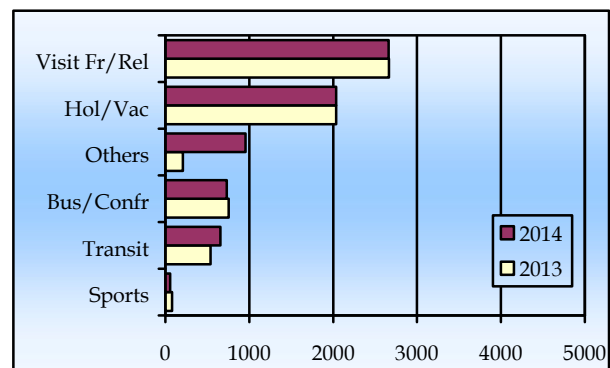
### 6. VISITORS BY PURPOSE OF VISIT

The principal source markets (table 4) namely New Zealand, American Samoa, Australia, and the United States of America constitute 86.0 percent of all visitors visiting Samoa in February 2014.

Majority of visitors (37.5 percent) were here to visit friends and relatives while 28.7 percent came on holiday and vacations.

Business and Conference visitors made up 10.3 percent and those who were here in transit to other destinations made up 9.2 percent of all visitors. Fig.6 depicts total visitors by purpose of visit for February 2013 and February 2014.

**Fig. 6: Total Visitors, by Purpose of Visit**

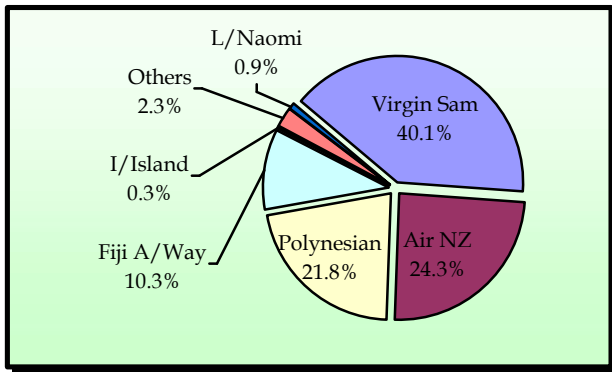


### 7. TOTAL ARRIVALS BY CARRIER

As depicted in table 5, Virgin Samoa, formerly known as Polynesian Blue, leads the way of arrival by carriers' during the reference period with a 40.1 percent share (3,920 passengers) followed by Air New Zealand with a 24.3 percent share (2,381 passengers).

Polynesian Airlines brought in 21.8 percent (2,128) of total arrivals while Fiji Airways, formerly known as Air Pacific, recorded a share of 10.3 percent (1,009). Fig. 7 illustrates total arrivals by carrier during the reference period.

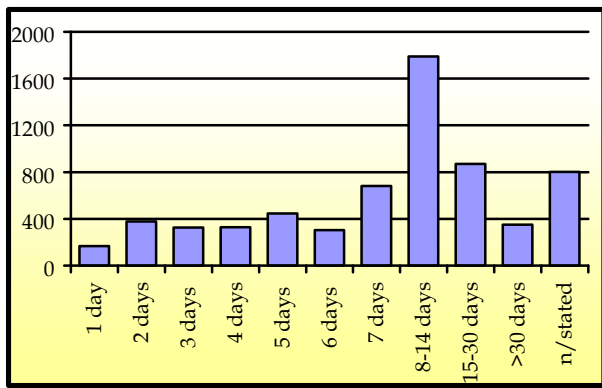
**Fig. 7: Total Arrivals by Carrier**



**8. VISITORS DURATION AND PLACE OF STAY**

The usual visitor's duration of stay in Samoa (Table 6) is between eight and thirty days, as shown in Fig. 8.

**Fig. 8: Total Visitors by Duration of Stay**



Most visitors (67.0 percent or 4,316 visitors) reported staying in private accommodation or with families/ relatives while 31.5 percent (2,031) stayed in hotels/ motels. The remaining 1.4 percent or 91 visitors did not state their place of stay. (Refer Fig. 9).

**Fig. 9: Total Visitors by Place of Stay**

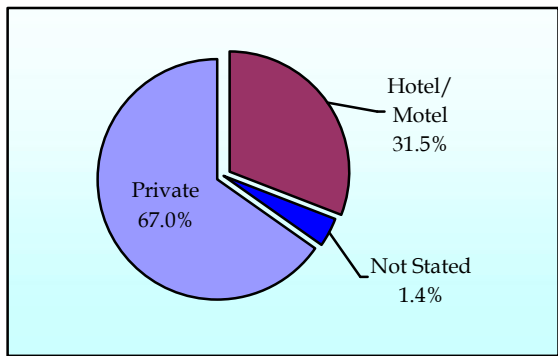
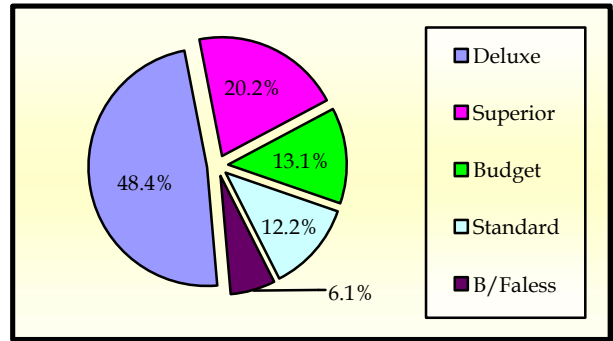


Fig. 10 portrays the number of visitors who stayed in hotels/ motels (2,031) by type of accommodation (hotel/ motel), within the reference month.

**Fig. 10: Visitors Staying in Hotels/ Motels by Type of Accommodation**



Detailed information for the reference period is attached in Tables 1 – 6 and the appendix shows longer time series.

**BACKGROUND**

The sourced documents for the compilation of International Arrival Statistics are the immigration arrival and departure card forms.

These forms are completed by all incoming and outgoing travelers at the three local points of entry namely (1) Apia wharf (2) Faleolo and (3) Fagalii international airports.

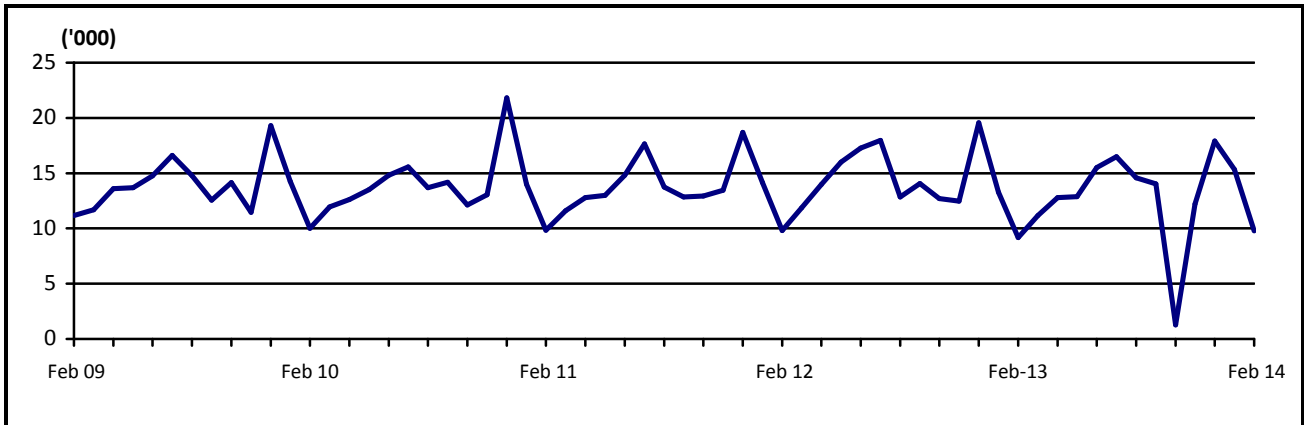
International arrival statistics are compiled on a monthly, quarterly and annual basis. These reports can also be extracted from our website: [www.sbs.gov.ws](http://www.sbs.gov.ws)

**The migration report for the month of March 2014 will be released on 30<sup>th</sup> April.**

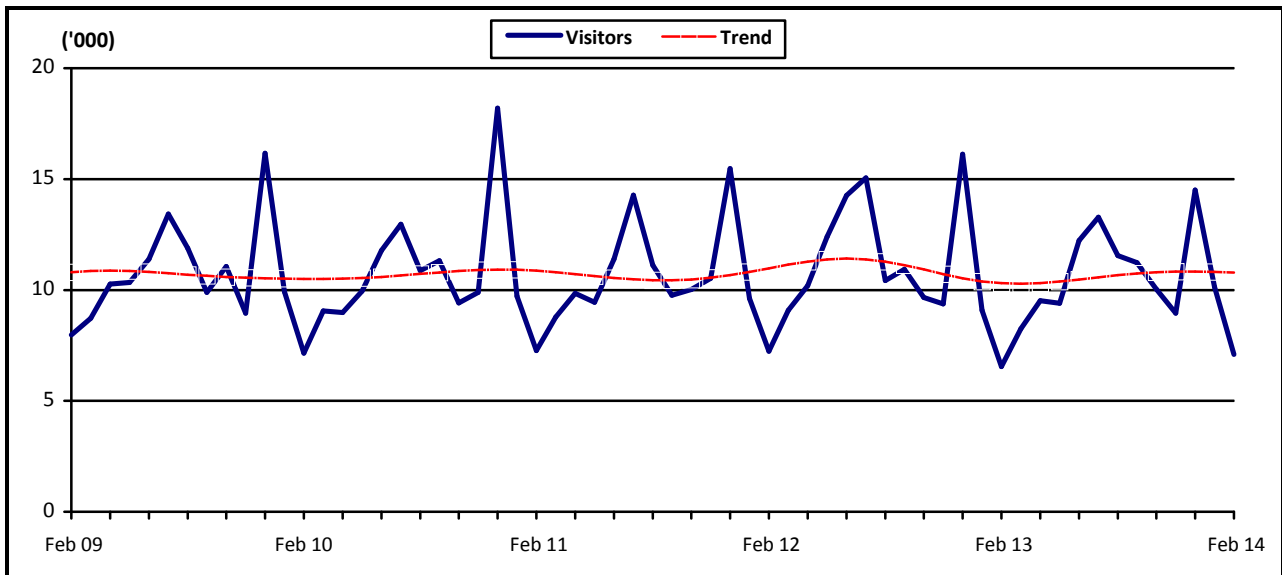
  
**Muagututi'a S Reupena**  
**GOVERNMENT STATISTICIAN**

**APPENDIX**

Graph 1: Monthly Total Arrivals, February 2009 – February 2014



Graph 2: Monthly Total Visitors, February 2009 – February 2014



Graph 3: Visitors Percentage Change over Previous month, February 2009 – February 2014

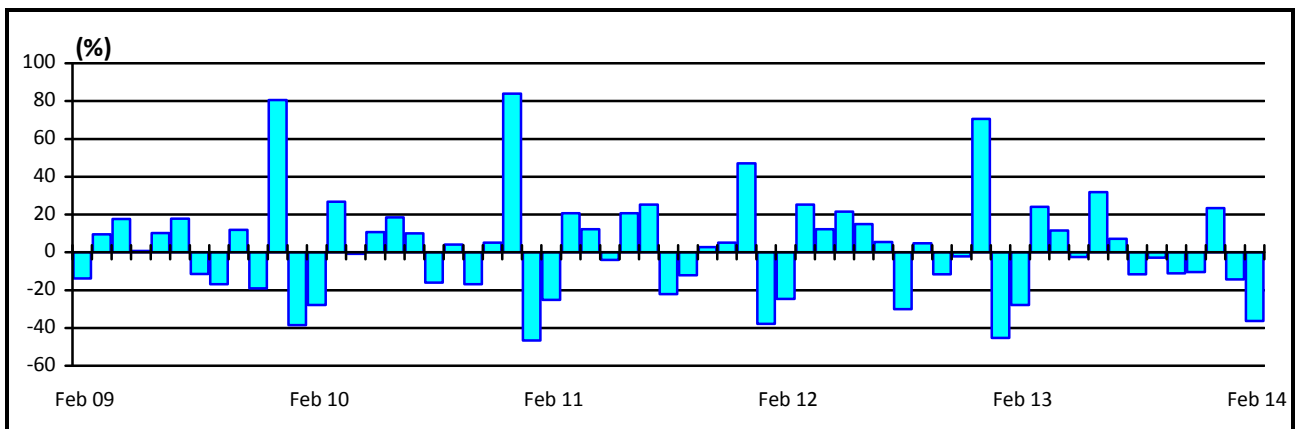


Table 1: Monthly Arrival and Departure by Mode of Tavel and Net Migration, 2004 - 2014.

Period	Visitors Arrivals			Total Arrivals			Total Departures			Net Migration
	Air	Sea	Total	Air	Sea	Total	Air	Sea	Total	
<b>2004</b>	93,946	4,209	<b>98,155</b>	129,517	11,864	<b>141,381</b>	131,277	12,303	<b>143,580</b>	<b>-2,199</b>
<b>2005</b>	98,544	3,263	<b>101,807</b>	132,200	10,557	<b>142,757</b>	135,008	10,936	<b>145,944</b>	<b>-3,187</b>
<b>2006</b>	112,411	3,471	<b>115,882</b>	147,807	9,349	<b>157,156</b>	147,991	9,489	<b>157,480</b>	<b>-324</b>
<b>2007</b>	118,653	3,703	<b>122,356</b>	150,584	7,635	<b>158,219</b>	158,099	8,578	<b>166,677</b>	<b>-8,458</b>
<b>2008</b>	118,459	3,743	<b>122,202</b>	151,883	8,628	<b>160,511</b>	161,482	9,908	<b>171,390</b>	<b>-10,879</b>
<b>2009</b>	127,327	1,978	<b>129,305</b>	161,816	5,095	<b>166,911</b>	156,319	6,069	<b>162,388</b>	<b>4,523</b>
<b>2010</b>	126,970	2,530	<b>129,500</b>	162,052	5,539	<b>167,591</b>	164,426	6,326	<b>170,752</b>	<b>-3,161</b>
<b>2011</b>	124,706	2,499	<b>127,604</b>	146,278	5,112	<b>151,390</b>	144,200	5,606	<b>149,806</b>	<b>1,584</b>
<b>2012</b>	131,945	2,749	<b>134,694</b>	167,211	5,509	<b>172,720</b>	167,842	6,297	<b>174,139</b>	<b>-1,419</b>
<b>2013</b>	122,172	2,505	<b>124,677</b>	157,542	5,335	<b>162,877</b>	162,333	5,885	<b>168,218</b>	<b>-5,341</b>
<b>2014</b>	<b>16,814</b>	<b>413</b>	<b>17,227</b>	<b>24,310</b>	<b>804</b>	<b>25,114</b>	...	...	...	...
<b>2011</b>										
February	7,030	243	7,273	9,387	443	9,830	11,671	592	12,263	<b>-2,433</b>
March	8,623	152	8,775	11,241	371	11,612	12,214	535	12,749	<b>-1,137</b>
April	9,733	109	9,842	12,473	323	12,796	11,993	363	12,356	<b>440</b>
May	9,234	214	9,448	12,543	444	12,987	12,718	394	13,112	<b>-125</b>
June	11,125	267	11,392	14,192	632	14,824	12,437	752	13,189	<b>1,635</b>
July	14,009	260	14,269	17,124	525	17,649	17,000	374	17,374	<b>275</b>
August	10,899	219	11,118	13,383	372	13,755	14,332	638	14,970	<b>-1,215</b>
September	9,570	187	9,757	12,382	458	12,840	12,452	504	12,956	<b>-116</b>
October	9,868	150	10,018	12,646	298	12,944	13,028	353	13,381	<b>-437</b>
November	10,224	302	10,526	12,946	508	13,454	11,918	566	12,484	<b>970</b>
December	15,072	396	15,468	17,961	738	18,699	14,437	535	14,972	<b>3,727</b>
<b>2012</b>										
January	9,480	133	9,613	13,878	267	14,145	18,055	554	18,609	<b>-4,464</b>
February	7,033	212	7,245	9,453	369	9,822	12,300	449	12,749	<b>-2,927</b>
March	8,926	152	9,078	11,504	359	11,863	11,034	374	11,408	<b>455</b>
April	10,095	104	10,199	13,157	820	13,977	12,989	1,012	14,001	<b>-24</b>
May	11,908	502	12,410	15,264	730	15,994	11,514	485	11,999	<b>3,995</b>
June	13,883	379	14,262	16,747	535	17,282	16,316	849	17,165	<b>117</b>
July	14,913	135	15,048	17,705	261	17,966	18,995	319	19,314	<b>-1,348</b>
August	10,228	205	10,433	12,509	334	12,843	13,921	453	14,374	<b>-1,531</b>
September	10,749	267	11,016	13,653	422	14,075	13,743	329	14,072	<b>3</b>
October	9,604	97	9,701	12,378	330	12,708	13,764	460	14,224	<b>-1,516</b>
November	9,190	266	9,456	11,943	539	12,482	11,369	395	11,764	<b>718</b>
December	15,936	297	16,233	19,020	543	19,563	13,842	618	14,460	<b>5,103</b>
<b>2013</b>										
January	8,821	259	9,080	12,952	334	13,286	16,397	649	17,046	<b>-3,760</b>
February	6,386	161	6,547	8,756	407	9,163	12,210	515	12,725	<b>-3,562</b>
March	8,086	160	8,246	10,776	399	11,175	9,612	438	10,050	<b>1,125</b>
April	9,351	165	9,516	12,325	453	12,778	12,576	653	13,229	<b>-451</b>
May	9,216	190	9,406	12,496	375	12,871	11,492	606	12,098	<b>773</b>
June	12,027	296	12,323	14,964	537	15,501	13,660	460	14,120	<b>1,381</b>
July	13,068	207	13,275	15,901	593	16,494	16,442	464	16,906	<b>-412</b>
August	11,380	175	11,555	14,046	535	14,581	15,063	536	15,599	<b>-1,018</b>
September	11,016	211	11,227	13,741	293	14,034	13,844	349	14,193	<b>-159</b>
October	9,828	209	10,037	12,512	361	12,873	14,773	158	14,931	<b>-2,058</b>
November	8,768	190	8,958	11,753	453	12,206	12,082	553	12,635	<b>-429</b>
December	14,225	282	14,507	17,320	595	17,915	14,182	504	14,686	<b>3,229</b>
<b>2014</b>										
January	<b>9,879</b>	<b>256</b>	<b>10,135</b>	<b>14,755</b>	<b>578</b>	<b>15,333</b>	...	...	...	...
February /1	<b>6,935</b>	<b>157</b>	<b>7,092</b>	<b>9,555</b>	<b>226</b>	<b>9,781</b>	...	...	...	...

**Source :** Ministry of the Prime Minister and Cabinet- Immigration Division; Ministry for Revenue- Customs Division and Samoa Bureau of Statistics.

1: Provisional figures

... Denote not yet available

■ : Revised Figures

Table 2: Total Arrivals by Age, Purpose of Entry and Gender, February 2014 <sup>1</sup>

Age	Purpose of Entry																	
	Total			Visitors			Returning Residents			Transit			Temporary Residents			Others		
	Total	Male	Female	Total	Male	Female	Total	Male	Female	Total	Male	Female	Total	Male	Female	Total	Male	Female
<b>Total</b>	<b>9,781</b>	<b>5,225</b>	<b>4,556</b>	<b>6,057</b>	<b>3,170</b>	<b>2,887</b>	<b>2,689</b>	<b>1,427</b>	<b>1,262</b>	<b>654</b>	<b>419</b>	<b>235</b>	<b>271</b>	<b>149</b>	<b>122</b>	<b>110</b>	<b>60</b>	<b>50</b>
0 - 4	452	229	223	279	146	133	134	66	68	27	14	13	9	2	7	3	1	2
5 - 9	287	138	149	164	81	83	103	44	59	14	10	4	4	3	1	2	0	2
10 - 14	265	138	127	157	83	74	91	45	46	9	6	3	8	4	4	0	0	0
15 - 19	488	241	247	296	144	152	152	74	78	21	12	9	15	9	6	4	2	2
20 - 24	831	401	430	495	217	278	237	133	104	42	24	18	44	19	25	13	8	5
25 - 29	817	422	395	525	253	272	200	110	90	50	30	20	32	22	10	10	7	3
30 - 34	773	402	371	491	237	254	191	104	87	69	49	20	15	8	7	7	4	3
35 - 39	790	446	344	478	254	224	218	130	88	68	44	24	18	14	4	8	4	4
40 - 44	848	476	372	529	287	242	220	117	103	67	53	14	19	11	8	13	8	5
45 - 49	873	474	399	549	284	265	230	132	98	67	45	22	16	8	8	11	5	6
50 - 54	960	539	421	598	336	262	244	129	115	77	54	23	30	14	16	11	6	5
55 - 59	838	491	347	524	316	208	229	127	102	48	26	22	24	14	10	13	8	5
60 - 64	608	316	292	392	199	193	155	79	76	39	25	14	16	10	6	6	3	3
65 - 69	447	244	203	285	163	122	118	57	61	28	16	12	14	7	7	2	1	1
70 - 74	279	154	125	170	104	66	80	37	43	20	8	12	4	3	1	5	2	3
75 +	225	114	111	125	66	59	87	43	44	8	3	5	3	1	2	2	1	1
<b>% Distribution</b>	<b>100</b>	<b>53.4</b>	<b>46.6</b>	<b>61.9</b>	<b>32.4</b>	<b>29.5</b>	<b>27.5</b>	<b>14.6</b>	<b>12.9</b>	<b>6.7</b>	<b>4.3</b>	<b>2.4</b>	<b>2.8</b>	<b>1.5</b>	<b>1.2</b>	<b>1.1</b>	<b>0.6</b>	<b>0.5</b>

**Source:** Ministry of the Prime Minister and Cabinet - Immigration Division; Ministry for Revenue - Customs Division and Samoa Bureau of Statistics.

1: Provisional figures

2: Figures are subject to rounding errors

**Note:** The Purpose of Entry categories of Temporary Residents and Others were introduced as a result of the introduction of the new arrival card

Table 3: Total Visitors Arrivals by Country of Usual Residents and Mode of Travel, February 2014 <sup>1</sup>

Country of Usual Residence	Mode of Travel			Percentage (%) <sup>2</sup>
	Air	Sea	Total	
<b>OCEANIA</b>	<b>5,666</b>	<b>155</b>	<b>5,821</b>	<b>82.1</b>
American Samoa	1,159	25	1,184	16.7
Fiji	201	2	203	2.9
Cook Island	17	0	17	0.2
Other Pacific Is	184	85	269	3.8
New Zealand	2,599	16	2,615	36.9
Australia	1,506	27	1,533	21.6
<b>EUROPE</b>	<b>367</b>	<b>1</b>	<b>368</b>	<b>5.2</b>
United Kingdom	104	0	104	1.5
Scandinavia	33	0	33	0.5
Benelux	2	0	2	0.0
Germany	126	1	127	1.8
Other Europe	102	0	102	1.4
<b>AMERICA</b>	<b>517</b>	<b>1</b>	<b>518</b>	<b>7.3</b>
U.S.A	498	1	499	7.0
Canada	19	0	19	0.3
<b>ASIA</b>	<b>290</b>	<b>0</b>	<b>290</b>	<b>4.1</b>
Japan	31	0	31	0.4
China	118	0	118	1.7
Korea	6	0	6	0.1
Other Asia	135	0	135	1.9
<b>OTHERS</b>	<b>95</b>	<b>0</b>	<b>95</b>	<b>1.3</b>
<b>TOTAL</b>	<b>6,935</b>	<b>157</b>	<b>7,092</b>	<b>100%</b>
<b>PERCENTAGE DISTRIBUTION</b>	<b>97.8</b>	<b>1.5%</b>	<b>100%</b>	

**Source:** Ministry of the Prime Minister and Cabinet- Immigration Division; Ministry for Revenue- Customs Division and Samoa Bureau of Statistics.

1: Provisional figures.

2: Figures are subject to rounding errors

**Note:** (i) Visitors refer to all person visiting Samoa other than returning residents and also expatriates who are employed and living in Samoa (**include transit**).

(ii) Visitors also include Samoan citizens whose country of usual residence are country abroad.

(iii) **Scandinavia**- refers to countries of Norway, Sweden, Finland and Denmark.

(iv) **Benelux:** - refers to countries of Belgium, Netherlands and Luxembourg.

(v) **Exclude Cruise Liner Passengers.**





Table 4: Total Visitors by Usual Residence and Purpose of Visit, February 2014<sup>1</sup>

Usual Residence	Purpose of Visit								
	Total	Percentage <sup>2</sup>	Holiday/ Vacation	Business/ Conference	Visit Friends/ Relatives	Sports	Transit	Others	Not Stated
<b>OCEANIA</b>	<b>5,821</b>	<b>82.1</b>	<b>1,463</b>	<b>592</b>	<b>2,420</b>	<b>52</b>	<b>473</b>	<b>252</b>	<b>569</b>
American Samoa	1,184	16.7	150	80	365	8	215	66	300
Fiji	203	2.9	15	74	33	2	23	29	27
Cook Island	17	0.2	4	2	6	0	2	2	1
Other Pacific Is	269	3.8	17	47	35	1	84	35	50
New Zealand	2,615	36.9	748	251	1,280	32	104	73	127
Australia	1,533	21.6	529	138	701	9	45	47	64
<b>EUROPE</b>	<b>368</b>	<b>5.2</b>	<b>273</b>	<b>17</b>	<b>33</b>	<b>1</b>	<b>16</b>	<b>16</b>	<b>12</b>
United Kingdom	104	1.5	59	11	10	0	13	4	7
Scandinavia	33	0.5	27	0	1	0	1	3	1
Benelux	2	0.0	2	0	0	0	0	0	0
Germany	127	1.8	112	1	5	1	1	3	4
Other Europe	102	1.4	73	5	17	0	1	6	0
<b>AMERICA</b>	<b>518</b>	<b>7.3</b>	<b>180</b>	<b>55</b>	<b>158</b>	<b>2</b>	<b>51</b>	<b>36</b>	<b>36</b>
U.S.A.	499	7.0	173	53	156	2	47	32	36
Canada	19	0.3	7	2	2	0	4	4	0
<b>ASIA</b>	<b>290</b>	<b>4.1</b>	<b>77</b>	<b>57</b>	<b>39</b>	<b>0</b>	<b>94</b>	<b>7</b>	<b>16</b>
Japan	31	0.4	11	11	4	0	4	1	0
China	118	1.7	23	28	16	0	40	0	11
Korea	6	0.1	2	0	4	0	0	0	0
Other Asia	135	1.9	41	18	15	0	50	6	5
<b>OTHER COUNTRIES</b>	<b>95</b>	<b>1.3</b>	<b>41</b>	<b>11</b>	<b>12</b>	<b>1</b>	<b>20</b>	<b>2</b>	<b>8</b>
<b>TOTAL</b>	<b>7,092</b>	<b>100</b>	<b>2,034</b>	<b>732</b>	<b>2,662</b>	<b>56</b>	<b>654</b>	<b>313</b>	<b>641</b>
<b>Percentage Distribution<sup>2</sup></b>	<b>100</b>		<b>28.7</b>	<b>10.3</b>	<b>37.5</b>	<b>0.8</b>	<b>9.2</b>	<b>4.4</b>	<b>9.0</b>

**Source:** Ministry of the Prime Minister and Cabinet- Immigration Division; Ministry for Revenue- Customs Division and Samoa Bureau of Statistics.

**Note :** Sports was re-introduced again in the Purpose of Visit Category as of August 2008.

1: Provisional figures

2: Figures are subject to rounding errors

Table 5: Total Arrivals by Carrier and Purpose of Entry, February 2014 <sup>1</sup>

Carrier	Purpose of Entry					
	Total		Returning Residents	Percentage <sup>2</sup>	Visitors	Percentage <sup>2</sup>
<b>Total</b>	<b>9,781</b>	<b>100%</b>	<b>2,689</b>	<b>27.5</b>	<b>7,092</b>	<b>72.5</b>
<b>AIR</b>						
Virgin Samoa <sup>3</sup>	3,920	40.1	1192	12.2	2,728	27.9
Polynesian	2,128	21.8	570	5.8	1,558	15.9
Inter Island	28	0.3	6	0.1	22	0.2
Air New Zealand	2,381	24.3	603	6.2	1,778	18.2
Fiji Airways <sup>4</sup>	1,009	10.3	247	2.5	762	7.8
Other Air Carrier	89	0.9	2	0.0	87	0.9
<b>SEA</b>						
Lady Naomi	87	0.9	54	0.6	33	0.3
Yacht	0	0.0	0	0.0	0	0.0
Other Sea Carrier	139	1.4	15	0.2	124	1.3

**Source:** Ministry of the Prime Minister and Cabinet- Immigration Division; Ministry for Revenue- Customs Division and Samoa Bureau of Statistics.

**Note:** Total visitors include transit.

- 1: Provisional figures
- 2: Figures are subject to rounding errors
- 3: Polynesian Blue is now called Virgin Samoa
- 4: Air Pacific is now called Fiji Airways

Table 6: Visitors by Duration of Stay and Place of Stay, February 2014 <sup>1</sup>

Duration of Stay	Place of Stay			
	Total	Hotel/Motel	Private	Not Stated
<b>Total</b>	<b>6,438</b>	<b>2,031</b>	<b>4,316</b>	<b>91</b>
1day	167	71	92	4
2days	377	233	136	8
3days	326	172	152	2
4days	327	145	182	0
5days	446	212	227	7
6days	303	162	137	4
7days	680	303	375	2
8-14days	1788	517	1258	13
15-30days	871	113	746	12
31-60days	136	32	104	0
61-90days	77	3	72	2
91-180days	54	5	47	2
181-365days	83	7	74	2
Not Stated	803	56	714	33
<b>Percentage Distribution <sup>2</sup></b>	<b>100</b>	<b>31.5</b>	<b>67.0</b>	<b>1.4</b>

**Source:** Ministry of the Prime Minister and Cabinet- Immigration Division,  
Ministry for Revenue- Customs Division and Samoa Bureau of Statistics.

**Note:** Visitors here, exclude transit.

1: Provisional figures

2: Figures are subject to rounding errors

Table 1: Monthly Arrival and Departure by Mode of Tavel and Net Migration, 2004 - 2014.

Period	Visitors Arrivals			Total Arrivals			Total Departures			Net Migration
	Air	Sea	Total	Air	Sea	Total	Air	Sea	Total	
<b>2004</b>	93,946	4,209	<b>98,155</b>	129,517	11,864	<b>141,381</b>	131,277	12,303	<b>143,580</b>	<b>-2,199</b>
<b>2005</b>	98,544	3,263	<b>101,807</b>	132,200	10,557	<b>142,757</b>	135,008	10,936	<b>145,944</b>	<b>-3,187</b>
<b>2006</b>	112,411	3,471	<b>115,882</b>	147,807	9,349	<b>157,156</b>	147,991	9,489	<b>157,480</b>	<b>-324</b>
<b>2007</b>	118,653	3,703	<b>122,356</b>	150,584	7,635	<b>158,219</b>	158,099	8,578	<b>166,677</b>	<b>-8,458</b>
<b>2008</b>	118,459	3,743	<b>122,202</b>	151,883	8,628	<b>160,511</b>	161,482	9,908	<b>171,390</b>	<b>-10,879</b>
<b>2009</b>	127,327	1,978	<b>129,305</b>	161,816	5,095	<b>166,911</b>	156,319	6,069	<b>162,388</b>	<b>4,523</b>
<b>2010</b>	126,970	2,530	<b>129,500</b>	162,052	5,539	<b>167,591</b>	164,426	6,326	<b>170,752</b>	<b>-3,161</b>
<b>2011</b>	124,706	2,499	<b>127,604</b>	146,278	5,112	<b>151,390</b>	144,200	5,606	<b>149,806</b>	<b>1,584</b>
<b>2012</b>	131,945	2,749	<b>134,694</b>	167,211	5,509	<b>172,720</b>	167,842	6,297	<b>174,139</b>	<b>-1,419</b>
<b>2013</b>	122,172	2,505	<b>124,677</b>	157,542	5,335	<b>162,877</b>	162,333	5,885	<b>168,218</b>	<b>-5,341</b>
<b>2014</b>	<b>16,814</b>	<b>413</b>	<b>17,227</b>	<b>24,310</b>	<b>804</b>	<b>25,114</b>	...	...	...	...
<b>2011</b>										
February	7,030	243	7,273	9,387	443	9,830	11,671	592	12,263	<b>-2,433</b>
March	8,623	152	8,775	11,241	371	11,612	12,214	535	12,749	<b>-1,137</b>
April	9,733	109	9,842	12,473	323	12,796	11,993	363	12,356	<b>440</b>
May	9,234	214	9,448	12,543	444	12,987	12,718	394	13,112	<b>-125</b>
June	11,125	267	11,392	14,192	632	14,824	12,437	752	13,189	<b>1,635</b>
July	14,009	260	14,269	17,124	525	17,649	17,000	374	17,374	<b>275</b>
August	10,899	219	11,118	13,383	372	13,755	14,332	638	14,970	<b>-1,215</b>
September	9,570	187	9,757	12,382	458	12,840	12,452	504	12,956	<b>-116</b>
October	9,868	150	10,018	12,646	298	12,944	13,028	353	13,381	<b>-437</b>
November	10,224	302	10,526	12,946	508	13,454	11,918	566	12,484	<b>970</b>
December	15,072	396	15,468	17,961	738	18,699	14,437	535	14,972	<b>3,727</b>
<b>2012</b>										
January	9,480	133	9,613	13,878	267	14,145	18,055	554	18,609	<b>-4,464</b>
February	7,033	212	7,245	9,453	369	9,822	12,300	449	12,749	<b>-2,927</b>
March	8,926	152	9,078	11,504	359	11,863	11,034	374	11,408	<b>455</b>
April	10,095	104	10,199	13,157	820	13,977	12,989	1,012	14,001	<b>-24</b>
May	11,908	502	12,410	15,264	730	15,994	11,514	485	11,999	<b>3,995</b>
June	13,883	379	14,262	16,747	535	17,282	16,316	849	17,165	<b>117</b>
July	14,913	135	15,048	17,705	261	17,966	18,995	319	19,314	<b>-1,348</b>
August	10,228	205	10,433	12,509	334	12,843	13,921	453	14,374	<b>-1,531</b>
September	10,749	267	11,016	13,653	422	14,075	13,743	329	14,072	<b>3</b>
October	9,604	97	9,701	12,378	330	12,708	13,764	460	14,224	<b>-1,516</b>
November	9,190	266	9,456	11,943	539	12,482	11,369	395	11,764	<b>718</b>
December	15,936	297	16,233	19,020	543	19,563	13,842	618	14,460	<b>5,103</b>
<b>2013</b>										
January	8,821	259	9,080	12,952	334	13,286	16,397	649	17,046	<b>-3,760</b>
February	6,386	161	6,547	8,756	407	9,163	12,210	515	12,725	<b>-3,562</b>
March	8,086	160	8,246	10,776	399	11,175	9,612	438	10,050	<b>1,125</b>
April	9,351	165	9,516	12,325	453	12,778	12,576	653	13,229	<b>-451</b>
May	9,216	190	9,406	12,496	375	12,871	11,492	606	12,098	<b>773</b>
June	12,027	296	12,323	14,964	537	15,501	13,660	460	14,120	<b>1,381</b>
July	13,068	207	13,275	15,901	593	16,494	16,442	464	16,906	<b>-412</b>
August	11,380	175	11,555	14,046	535	14,581	15,063	536	15,599	<b>-1,018</b>
September	11,016	211	11,227	13,741	293	14,034	13,844	349	14,193	<b>-159</b>
October	9,828	209	10,037	12,512	361	12,873	14,773	158	14,931	<b>-2,058</b>
November	8,768	190	8,958	11,753	453	12,206	12,082	553	12,635	<b>-429</b>
December	14,225	282	14,507	17,320	595	17,915	14,182	504	14,686	<b>3,229</b>
<b>2014</b>										
<b>January</b>	<b>9,879</b>	<b>256</b>	<b>10,135</b>	<b>14,755</b>	<b>578</b>	<b>15,333</b>	...	...	...	...
<b>February /1</b>	<b>6,935</b>	<b>157</b>	<b>7,092</b>	<b>9,555</b>	<b>226</b>	<b>9,781</b>	...	...	...	...

**Source :** Ministry of the Prime Minister and Cabinet- Immigration Division; Ministry for Revenue- Customs Division and Samoa Bureau of Statistics.

1: Provisional figures

... Denote not yet available

■ : Revised Figures

Table 2: Total Arrivals by Age, Purpose of Entry and Gender, February 2014 <sup>1</sup>

Age	Purpose of Entry																	
	Total			Visitors			Returning Residents			Transit			Temporary Residents			Others		
	Total	Male	Female	Total	Male	Female	Total	Male	Female	Total	Male	Female	Total	Male	Female	Total	Male	Female
<b>Total</b>	<b>9,781</b>	<b>5,225</b>	<b>4,556</b>	<b>6,057</b>	<b>3,170</b>	<b>2,887</b>	<b>2,689</b>	<b>1,427</b>	<b>1,262</b>	<b>654</b>	<b>419</b>	<b>235</b>	<b>271</b>	<b>149</b>	<b>122</b>	<b>110</b>	<b>60</b>	<b>50</b>
0 - 4	452	229	223	279	146	133	134	66	68	27	14	13	9	2	7	3	1	2
5 - 9	287	138	149	164	81	83	103	44	59	14	10	4	4	3	1	2	0	2
10 - 14	265	138	127	157	83	74	91	45	46	9	6	3	8	4	4	0	0	0
15 - 19	488	241	247	296	144	152	152	74	78	21	12	9	15	9	6	4	2	2
20 - 24	831	401	430	495	217	278	237	133	104	42	24	18	44	19	25	13	8	5
25 - 29	817	422	395	525	253	272	200	110	90	50	30	20	32	22	10	10	7	3
30 - 34	773	402	371	491	237	254	191	104	87	69	49	20	15	8	7	7	4	3
35 - 39	790	446	344	478	254	224	218	130	88	68	44	24	18	14	4	8	4	4
40 - 44	848	476	372	529	287	242	220	117	103	67	53	14	19	11	8	13	8	5
45 - 49	873	474	399	549	284	265	230	132	98	67	45	22	16	8	8	11	5	6
50 - 54	960	539	421	598	336	262	244	129	115	77	54	23	30	14	16	11	6	5
55 - 59	838	491	347	524	316	208	229	127	102	48	26	22	24	14	10	13	8	5
60 - 64	608	316	292	392	199	193	155	79	76	39	25	14	16	10	6	6	3	3
65 - 69	447	244	203	285	163	122	118	57	61	28	16	12	14	7	7	2	1	1
70 - 74	279	154	125	170	104	66	80	37	43	20	8	12	4	3	1	5	2	3
75 +	225	114	111	125	66	59	87	43	44	8	3	5	3	1	2	2	1	1
<b>% Distribution</b>	<b>100</b>	<b>53.4</b>	<b>46.6</b>	<b>61.9</b>	<b>32.4</b>	<b>29.5</b>	<b>27.5</b>	<b>14.6</b>	<b>12.9</b>	<b>6.7</b>	<b>4.3</b>	<b>2.4</b>	<b>2.8</b>	<b>1.5</b>	<b>1.2</b>	<b>1.1</b>	<b>0.6</b>	<b>0.5</b>

**Source:** Ministry of the Prime Minister and Cabinet - Immigration Division; Ministry for Revenue - Customs Division and Samoa Bureau of Statistics.

1: Provisional figures

2: Figures are subject to rounding errors

**Note:** The Purpose of Entry categories of Temporary Residents and Others were introduced as a result of the introduction of the new arrival card

Table 3: Total Visitors Arrivals by Country of Usual Residents and Mode of Travel, February 2014 <sup>1</sup>

Country of Usual Residence	Mode of Travel			Percentage (%) <sup>2</sup>
	Air	Sea	Total	
<b>OCEANIA</b>	<b>5,666</b>	<b>155</b>	<b>5,821</b>	<b>82.1</b>
American Samoa	1,159	25	1,184	16.7
Fiji	201	2	203	2.9
Cook Island	17	0	17	0.2
Other Pacific Is	184	85	269	3.8
New Zealand	2,599	16	2,615	36.9
Australia	1,506	27	1,533	21.6
<b>EUROPE</b>	<b>367</b>	<b>1</b>	<b>368</b>	<b>5.2</b>
United Kingdom	104	0	104	1.5
Scandinavia	33	0	33	0.5
Benelux	2	0	2	0.0
Germany	126	1	127	1.8
Other Europe	102	0	102	1.4
<b>AMERICA</b>	<b>517</b>	<b>1</b>	<b>518</b>	<b>7.3</b>
U.S.A	498	1	499	7.0
Canada	19	0	19	0.3
<b>ASIA</b>	<b>290</b>	<b>0</b>	<b>290</b>	<b>4.1</b>
Japan	31	0	31	0.4
China	118	0	118	1.7
Korea	6	0	6	0.1
Other Asia	135	0	135	1.9
<b>OTHERS</b>	<b>95</b>	<b>0</b>	<b>95</b>	<b>1.3</b>
<b>TOTAL</b>	<b>6,935</b>	<b>157</b>	<b>7,092</b>	<b>100%</b>
<b>PERCENTAGE DISTRIBUTION</b>	<b>97.8</b>	<b>1.5%</b>	<b>100%</b>	

**Source:** Ministry of the Prime Minister and Cabinet- Immigration Division; Ministry for Revenue- Customs Division and Samoa Bureau of Statistics.

1: Provisional figures.

2: Figures are subject to rounding errors

**Note:** (i) Visitors refer to all person visiting Samoa other than returning residents and also expatriates who are employed and living in Samoa (**include transit**).

(ii) Visitors also include Samoan citizens whose country of usual residence are country abroad.

(iii) **Scandinavia**- refers to countries of Norway, Sweden, Finland and Denmark.

(iv) **Benelux:** - refers to countries of Belgium, Netherlands and Luxembourg.

(v) **Exclude Cruise Liner Passengers.**





Table 4: Total Visitors by Usual Residence and Purpose of Visit, February 2014<sup>1</sup>

Usual Residence	Purpose of Visit								
	Total	Percentage <sup>2</sup>	Holiday/ Vacation	Business/ Conference	Visit Friends/ Relatives	Sports	Transit	Others	Not Stated
<b>OCEANIA</b>	<b>5,821</b>	<b>82.1</b>	<b>1,463</b>	<b>592</b>	<b>2,420</b>	<b>52</b>	<b>473</b>	<b>252</b>	<b>569</b>
American Samoa	1,184	16.7	150	80	365	8	215	66	300
Fiji	203	2.9	15	74	33	2	23	29	27
Cook Island	17	0.2	4	2	6	0	2	2	1
Other Pacific Is	269	3.8	17	47	35	1	84	35	50
New Zealand	2,615	36.9	748	251	1,280	32	104	73	127
Australia	1,533	21.6	529	138	701	9	45	47	64
<b>EUROPE</b>	<b>368</b>	<b>5.2</b>	<b>273</b>	<b>17</b>	<b>33</b>	<b>1</b>	<b>16</b>	<b>16</b>	<b>12</b>
United Kingdom	104	1.5	59	11	10	0	13	4	7
Scandinavia	33	0.5	27	0	1	0	1	3	1
Benelux	2	0.0	2	0	0	0	0	0	0
Germany	127	1.8	112	1	5	1	1	3	4
Other Europe	102	1.4	73	5	17	0	1	6	0
<b>AMERICA</b>	<b>518</b>	<b>7.3</b>	<b>180</b>	<b>55</b>	<b>158</b>	<b>2</b>	<b>51</b>	<b>36</b>	<b>36</b>
U.S.A.	499	7.0	173	53	156	2	47	32	36
Canada	19	0.3	7	2	2	0	4	4	0
<b>ASIA</b>	<b>290</b>	<b>4.1</b>	<b>77</b>	<b>57</b>	<b>39</b>	<b>0</b>	<b>94</b>	<b>7</b>	<b>16</b>
Japan	31	0.4	11	11	4	0	4	1	0
China	118	1.7	23	28	16	0	40	0	11
Korea	6	0.1	2	0	4	0	0	0	0
Other Asia	135	1.9	41	18	15	0	50	6	5
<b>OTHER COUNTRIES</b>	<b>95</b>	<b>1.3</b>	<b>41</b>	<b>11</b>	<b>12</b>	<b>1</b>	<b>20</b>	<b>2</b>	<b>8</b>
<b>TOTAL</b>	<b>7,092</b>	<b>100</b>	<b>2,034</b>	<b>732</b>	<b>2,662</b>	<b>56</b>	<b>654</b>	<b>313</b>	<b>641</b>
<b>Percentage Distribution<sup>2</sup></b>	<b>100</b>		<b>28.7</b>	<b>10.3</b>	<b>37.5</b>	<b>0.8</b>	<b>9.2</b>	<b>4.4</b>	<b>9.0</b>

**Source:** Ministry of the Prime Minister and Cabinet- Immigration Division; Ministry for Revenue- Customs Division and Samoa Bureau of Statistics.

**Note :** Sports was re-introduced again in the Purpose of Visit Category as of August 2008.

1: Provisional figures

2: Figures are subject to rounding errors

Table 5: Total Arrivals by Carrier and Purpose of Entry, February 2014 <sup>1</sup>

Carrier	Purpose of Entry					
	Total		Returning Residents	Percentage <sup>2</sup>	Visitors	Percentage <sup>2</sup>
<b>Total</b>	<b>9,781</b>	<b>100%</b>	<b>2,689</b>	<b>27.5</b>	<b>7,092</b>	<b>72.5</b>
<b>AIR</b>						
Virgin Samoa <sup>3</sup>	3,920	40.1	1192	12.2	2,728	27.9
Polynesian	2,128	21.8	570	5.8	1,558	15.9
Inter Island	28	0.3	6	0.1	22	0.2
Air New Zealand	2,381	24.3	603	6.2	1,778	18.2
Fiji Airways <sup>4</sup>	1,009	10.3	247	2.5	762	7.8
Other Air Carrier	89	0.9	2	0.0	87	0.9
<b>SEA</b>						
Lady Naomi	87	0.9	54	0.6	33	0.3
Yacht	0	0.0	0	0.0	0	0.0
Other Sea Carrier	139	1.4	15	0.2	124	1.3

**Source:** Ministry of the Prime Minister and Cabinet- Immigration Division; Ministry for Revenue-Customs Division and Samoa Bureau of Statistics.

**Note:** Total visitors include transit.

- 1: Provisional figures
- 2: Figures are subject to rounding errors
- 3: Polynesian Blue is now called Virgin Samoa
- 4: Air Pacific is now called Fiji Airways

Table 6: Visitors by Duration of Stay and Place of Stay, February 2014 <sup>1</sup>

Duration of Stay	Place of Stay			
	Total	Hotel/Motel	Private	Not Stated
<b>Total</b>	<b>6,438</b>	<b>2,031</b>	<b>4,316</b>	<b>91</b>
1day	167	71	92	4
2days	377	233	136	8
3days	326	172	152	2
4days	327	145	182	0
5days	446	212	227	7
6days	303	162	137	4
7days	680	303	375	2
8-14days	1788	517	1258	13
15-30days	871	113	746	12
31-60days	136	32	104	0
61-90days	77	3	72	2
91-180days	54	5	47	2
181-365days	83	7	74	2
Not Stated	803	56	714	33
<b>Percentage Distribution <sup>2</sup></b>	<b>100</b>	<b>31.5</b>	<b>67.0</b>	<b>1.4</b>

**Source:** Ministry of the Prime Minister and Cabinet- Immigration Division,  
Ministry for Revenue- Customs Division and Samoa Bureau of Statistics.

**Note:** Visitors here, exclude transit.

1: Provisional figures

2: Figures are subject to rounding errors

Table 1: Monthly Arrival and Departure by Mode of Tavel and Net Migration, 2004 - 2014.

Period	Visitors Arrivals			Total Arrivals			Total Departures			Net Migration
	Air	Sea	Total	Air	Sea	Total	Air	Sea	Total	
<b>2004</b>	93,946	4,209	<b>98,155</b>	129,517	11,864	<b>141,381</b>	131,277	12,303	<b>143,580</b>	<b>-2,199</b>
<b>2005</b>	98,544	3,263	<b>101,807</b>	132,200	10,557	<b>142,757</b>	135,008	10,936	<b>145,944</b>	<b>-3,187</b>
<b>2006</b>	112,411	3,471	<b>115,882</b>	147,807	9,349	<b>157,156</b>	147,991	9,489	<b>157,480</b>	<b>-324</b>
<b>2007</b>	118,653	3,703	<b>122,356</b>	150,584	7,635	<b>158,219</b>	158,099	8,578	<b>166,677</b>	<b>-8,458</b>
<b>2008</b>	118,459	3,743	<b>122,202</b>	151,883	8,628	<b>160,511</b>	161,482	9,908	<b>171,390</b>	<b>-10,879</b>
<b>2009</b>	127,327	1,978	<b>129,305</b>	161,816	5,095	<b>166,911</b>	156,319	6,069	<b>162,388</b>	<b>4,523</b>
<b>2010</b>	126,970	2,530	<b>129,500</b>	162,052	5,539	<b>167,591</b>	164,426	6,326	<b>170,752</b>	<b>-3,161</b>
<b>2011</b>	124,706	2,499	<b>127,604</b>	146,278	5,112	<b>151,390</b>	144,200	5,606	<b>149,806</b>	<b>1,584</b>
<b>2012</b>	131,945	2,749	<b>134,694</b>	167,211	5,509	<b>172,720</b>	167,842	6,297	<b>174,139</b>	<b>-1,419</b>
<b>2013</b>	122,172	2,505	<b>124,677</b>	157,542	5,335	<b>162,877</b>	162,333	5,885	<b>168,218</b>	<b>-5,341</b>
<b>2014</b>	<b>16,814</b>	<b>413</b>	<b>17,227</b>	<b>24,310</b>	<b>804</b>	<b>25,114</b>	...	...	...	...
<b>2011</b>										
February	7,030	243	7,273	9,387	443	9,830	11,671	592	12,263	<b>-2,433</b>
March	8,623	152	8,775	11,241	371	11,612	12,214	535	12,749	<b>-1,137</b>
April	9,733	109	9,842	12,473	323	12,796	11,993	363	12,356	<b>440</b>
May	9,234	214	9,448	12,543	444	12,987	12,718	394	13,112	<b>-125</b>
June	11,125	267	11,392	14,192	632	14,824	12,437	752	13,189	<b>1,635</b>
July	14,009	260	14,269	17,124	525	17,649	17,000	374	17,374	<b>275</b>
August	10,899	219	11,118	13,383	372	13,755	14,332	638	14,970	<b>-1,215</b>
September	9,570	187	9,757	12,382	458	12,840	12,452	504	12,956	<b>-116</b>
October	9,868	150	10,018	12,646	298	12,944	13,028	353	13,381	<b>-437</b>
November	10,224	302	10,526	12,946	508	13,454	11,918	566	12,484	<b>970</b>
December	15,072	396	15,468	17,961	738	18,699	14,437	535	14,972	<b>3,727</b>
<b>2012</b>										
January	9,480	133	9,613	13,878	267	14,145	18,055	554	18,609	<b>-4,464</b>
February	7,033	212	7,245	9,453	369	9,822	12,300	449	12,749	<b>-2,927</b>
March	8,926	152	9,078	11,504	359	11,863	11,034	374	11,408	<b>455</b>
April	10,095	104	10,199	13,157	820	13,977	12,989	1,012	14,001	<b>-24</b>
May	11,908	502	12,410	15,264	730	15,994	11,514	485	11,999	<b>3,995</b>
June	13,883	379	14,262	16,747	535	17,282	16,316	849	17,165	<b>117</b>
July	14,913	135	15,048	17,705	261	17,966	18,995	319	19,314	<b>-1,348</b>
August	10,228	205	10,433	12,509	334	12,843	13,921	453	14,374	<b>-1,531</b>
September	10,749	267	11,016	13,653	422	14,075	13,743	329	14,072	<b>3</b>
October	9,604	97	9,701	12,378	330	12,708	13,764	460	14,224	<b>-1,516</b>
November	9,190	266	9,456	11,943	539	12,482	11,369	395	11,764	<b>718</b>
December	15,936	297	16,233	19,020	543	19,563	13,842	618	14,460	<b>5,103</b>
<b>2013</b>										
January	8,821	259	9,080	12,952	334	13,286	16,397	649	17,046	<b>-3,760</b>
February	6,386	161	6,547	8,756	407	9,163	12,210	515	12,725	<b>-3,562</b>
March	8,086	160	8,246	10,776	399	11,175	9,612	438	10,050	<b>1,125</b>
April	9,351	165	9,516	12,325	453	12,778	12,576	653	13,229	<b>-451</b>
May	9,216	190	9,406	12,496	375	12,871	11,492	606	12,098	<b>773</b>
June	12,027	296	12,323	14,964	537	15,501	13,660	460	14,120	<b>1,381</b>
July	13,068	207	13,275	15,901	593	16,494	16,442	464	16,906	<b>-412</b>
August	11,380	175	11,555	14,046	535	14,581	15,063	536	15,599	<b>-1,018</b>
September	11,016	211	11,227	13,741	293	14,034	13,844	349	14,193	<b>-159</b>
October	9,828	209	10,037	12,512	361	12,873	14,773	158	14,931	<b>-2,058</b>
November	8,768	190	8,958	11,753	453	12,206	12,082	553	12,635	<b>-429</b>
December	14,225	282	14,507	17,320	595	17,915	14,182	504	14,686	<b>3,229</b>
<b>2014</b>										
<b>January</b>	<b>9,879</b>	<b>256</b>	<b>10,135</b>	<b>14,755</b>	<b>578</b>	<b>15,333</b>	...	...	...	...
<b>February /1</b>	<b>6,935</b>	<b>157</b>	<b>7,092</b>	<b>9,555</b>	<b>226</b>	<b>9,781</b>	...	...	...	...

**Source :** Ministry of the Prime Minister and Cabinet- Immigration Division; Ministry for Revenue- Customs Division and Samoa Bureau of Statistics.

1: Provisional figures

... Denote not yet available

■ : Revised Figures

Table 2: Total Arrivals by Age, Purpose of Entry and Gender, February 2014 <sup>1</sup>

Age	Purpose of Entry																	
	Total			Visitors			Returning Residents			Transit			Temporary Residents			Others		
	Total	Male	Female	Total	Male	Female	Total	Male	Female	Total	Male	Female	Total	Male	Female	Total	Male	Female
<b>Total</b>	<b>9,781</b>	<b>5,225</b>	<b>4,556</b>	<b>6,057</b>	<b>3,170</b>	<b>2,887</b>	<b>2,689</b>	<b>1,427</b>	<b>1,262</b>	<b>654</b>	<b>419</b>	<b>235</b>	<b>271</b>	<b>149</b>	<b>122</b>	<b>110</b>	<b>60</b>	<b>50</b>
0 - 4	452	229	223	279	146	133	134	66	68	27	14	13	9	2	7	3	1	2
5 - 9	287	138	149	164	81	83	103	44	59	14	10	4	4	3	1	2	0	2
10 - 14	265	138	127	157	83	74	91	45	46	9	6	3	8	4	4	0	0	0
15 - 19	488	241	247	296	144	152	152	74	78	21	12	9	15	9	6	4	2	2
20 - 24	831	401	430	495	217	278	237	133	104	42	24	18	44	19	25	13	8	5
25 - 29	817	422	395	525	253	272	200	110	90	50	30	20	32	22	10	10	7	3
30 - 34	773	402	371	491	237	254	191	104	87	69	49	20	15	8	7	7	4	3
35 - 39	790	446	344	478	254	224	218	130	88	68	44	24	18	14	4	8	4	4
40 - 44	848	476	372	529	287	242	220	117	103	67	53	14	19	11	8	13	8	5
45 - 49	873	474	399	549	284	265	230	132	98	67	45	22	16	8	8	11	5	6
50 - 54	960	539	421	598	336	262	244	129	115	77	54	23	30	14	16	11	6	5
55 - 59	838	491	347	524	316	208	229	127	102	48	26	22	24	14	10	13	8	5
60 - 64	608	316	292	392	199	193	155	79	76	39	25	14	16	10	6	6	3	3
65 - 69	447	244	203	285	163	122	118	57	61	28	16	12	14	7	7	2	1	1
70 - 74	279	154	125	170	104	66	80	37	43	20	8	12	4	3	1	5	2	3
75 +	225	114	111	125	66	59	87	43	44	8	3	5	3	1	2	2	1	1
<b>% Distribution</b>	<b>100</b>	<b>53.4</b>	<b>46.6</b>	<b>61.9</b>	<b>32.4</b>	<b>29.5</b>	<b>27.5</b>	<b>14.6</b>	<b>12.9</b>	<b>6.7</b>	<b>4.3</b>	<b>2.4</b>	<b>2.8</b>	<b>1.5</b>	<b>1.2</b>	<b>1.1</b>	<b>0.6</b>	<b>0.5</b>

**Source:** Ministry of the Prime Minister and Cabinet - Immigration Division; Ministry for Revenue - Customs Division and Samoa Bureau of Statistics.

1: Provisional figures

2: Figures are subject to rounding errors

**Note:** The Purpose of Entry categories of Temporary Residents and Others were introduced as a result of the introduction of the new arrival card

Table 3: Total Visitors Arrivals by Country of Usual Residents and Mode of Travel, February 2014 <sup>1</sup>

Country of Usual Residence	Mode of Travel			Percentage (%) <sup>2</sup>
	Air	Sea	Total	
<b>OCEANIA</b>	<b>5,666</b>	<b>155</b>	<b>5,821</b>	<b>82.1</b>
American Samoa	1,159	25	1,184	16.7
Fiji	201	2	203	2.9
Cook Island	17	0	17	0.2
Other Pacific Is	184	85	269	3.8
New Zealand	2,599	16	2,615	36.9
Australia	1,506	27	1,533	21.6
<b>EUROPE</b>	<b>367</b>	<b>1</b>	<b>368</b>	<b>5.2</b>
United Kingdom	104	0	104	1.5
Scandinavia	33	0	33	0.5
Benelux	2	0	2	0.0
Germany	126	1	127	1.8
Other Europe	102	0	102	1.4
<b>AMERICA</b>	<b>517</b>	<b>1</b>	<b>518</b>	<b>7.3</b>
U.S.A	498	1	499	7.0
Canada	19	0	19	0.3
<b>ASIA</b>	<b>290</b>	<b>0</b>	<b>290</b>	<b>4.1</b>
Japan	31	0	31	0.4
China	118	0	118	1.7
Korea	6	0	6	0.1
Other Asia	135	0	135	1.9
<b>OTHERS</b>	<b>95</b>	<b>0</b>	<b>95</b>	<b>1.3</b>
<b>TOTAL</b>	<b>6,935</b>	<b>157</b>	<b>7,092</b>	<b>100%</b>
<b>PERCENTAGE DISTRIBUTION</b>	<b>97.8</b>	<b>1.5%</b>	<b>100%</b>	

**Source:** Ministry of the Prime Minister and Cabinet- Immigration Division; Ministry for Revenue- Customs Division and Samoa Bureau of Statistics.

1: Provisional figures.

2: Figures are subject to rounding errors

**Note:** (i) Visitors refer to all person visiting Samoa other than returning residents and also expatriates who are employed and living in Samoa (**include transit**).

(ii) Visitors also include Samoan citizens whose country of usual residence are country abroad.

(iii) **Scandinavia**- refers to countries of Norway, Sweden, Finland and Denmark.

(iv) **Benelux:** - refers to countries of Belgium, Netherlands and Luxembourg.

(v) **Exclude Cruise Liner Passengers.**





Table 4: Total Visitors by Usual Residence and Purpose of Visit, February 2014<sup>1</sup>

Usual Residence	Purpose of Visit								
	Total	Percentage <sup>2</sup>	Holiday/ Vacation	Business/ Conference	Visit Friends/ Relatives	Sports	Transit	Others	Not Stated
<b>OCEANIA</b>	<b>5,821</b>	<b>82.1</b>	<b>1,463</b>	<b>592</b>	<b>2,420</b>	<b>52</b>	<b>473</b>	<b>252</b>	<b>569</b>
American Samoa	1,184	16.7	150	80	365	8	215	66	300
Fiji	203	2.9	15	74	33	2	23	29	27
Cook Island	17	0.2	4	2	6	0	2	2	1
Other Pacific Is	269	3.8	17	47	35	1	84	35	50
New Zealand	2,615	36.9	748	251	1,280	32	104	73	127
Australia	1,533	21.6	529	138	701	9	45	47	64
<b>EUROPE</b>	<b>368</b>	<b>5.2</b>	<b>273</b>	<b>17</b>	<b>33</b>	<b>1</b>	<b>16</b>	<b>16</b>	<b>12</b>
United Kingdom	104	1.5	59	11	10	0	13	4	7
Scandinavia	33	0.5	27	0	1	0	1	3	1
Benelux	2	0.0	2	0	0	0	0	0	0
Germany	127	1.8	112	1	5	1	1	3	4
Other Europe	102	1.4	73	5	17	0	1	6	0
<b>AMERICA</b>	<b>518</b>	<b>7.3</b>	<b>180</b>	<b>55</b>	<b>158</b>	<b>2</b>	<b>51</b>	<b>36</b>	<b>36</b>
U.S.A.	499	7.0	173	53	156	2	47	32	36
Canada	19	0.3	7	2	2	0	4	4	0
<b>ASIA</b>	<b>290</b>	<b>4.1</b>	<b>77</b>	<b>57</b>	<b>39</b>	<b>0</b>	<b>94</b>	<b>7</b>	<b>16</b>
Japan	31	0.4	11	11	4	0	4	1	0
China	118	1.7	23	28	16	0	40	0	11
Korea	6	0.1	2	0	4	0	0	0	0
Other Asia	135	1.9	41	18	15	0	50	6	5
<b>OTHER COUNTRIES</b>	<b>95</b>	<b>1.3</b>	<b>41</b>	<b>11</b>	<b>12</b>	<b>1</b>	<b>20</b>	<b>2</b>	<b>8</b>
<b>TOTAL</b>	<b>7,092</b>	<b>100</b>	<b>2,034</b>	<b>732</b>	<b>2,662</b>	<b>56</b>	<b>654</b>	<b>313</b>	<b>641</b>
<b>Percentage Distribution<sup>2</sup></b>	<b>100</b>		<b>28.7</b>	<b>10.3</b>	<b>37.5</b>	<b>0.8</b>	<b>9.2</b>	<b>4.4</b>	<b>9.0</b>

**Source:** Ministry of the Prime Minister and Cabinet- Immigration Division; Ministry for Revenue- Customs Division and Samoa Bureau of Statistics.

**Note :** Sports was re-introduced again in the Purpose of Visit Category as of August 2008.

1: Provisional figures

2: Figures are subject to rounding errors

Table 5: Total Arrivals by Carrier and Purpose of Entry, February 2014 <sup>1</sup>

Carrier	Purpose of Entry					
	Total		Returning Residents	Percentage <sup>2</sup>	Visitors	Percentage <sup>2</sup>
<b>Total</b>	<b>9,781</b>	<b>100%</b>	<b>2,689</b>	<b>27.5</b>	<b>7,092</b>	<b>72.5</b>
<b>AIR</b>						
Virgin Samoa <sup>3</sup>	3,920	40.1	1192	12.2	2,728	27.9
Polynesian	2,128	21.8	570	5.8	1,558	15.9
Inter Island	28	0.3	6	0.1	22	0.2
Air New Zealand	2,381	24.3	603	6.2	1,778	18.2
Fiji Airways <sup>4</sup>	1,009	10.3	247	2.5	762	7.8
Other Air Carrier	89	0.9	2	0.0	87	0.9
<b>SEA</b>						
Lady Naomi	87	0.9	54	0.6	33	0.3
Yacht	0	0.0	0	0.0	0	0.0
Other Sea Carrier	139	1.4	15	0.2	124	1.3

**Source:** Ministry of the Prime Minister and Cabinet- Immigration Division; Ministry for Revenue-Customs Division and Samoa Bureau of Statistics.

**Note:** Total visitors include transit.

- 1: Provisional figures
- 2: Figures are subject to rounding errors
- 3: Polynesian Blue is now called Virgin Samoa
- 4: Air Pacific is now called Fiji Airways

Table 6: Visitors by Duration of Stay and Place of Stay, February 2014 <sup>1</sup>

Duration of Stay	Place of Stay			
	Total	Hotel/Motel	Private	Not Stated
<b>Total</b>	<b>6,438</b>	<b>2,031</b>	<b>4,316</b>	<b>91</b>
1day	167	71	92	4
2days	377	233	136	8
3days	326	172	152	2
4days	327	145	182	0
5days	446	212	227	7
6days	303	162	137	4
7days	680	303	375	2
8-14days	1788	517	1258	13
15-30days	871	113	746	12
31-60days	136	32	104	0
61-90days	77	3	72	2
91-180days	54	5	47	2
181-365days	83	7	74	2
Not Stated	803	56	714	33
<b>Percentage Distribution <sup>2</sup></b>	<b>100</b>	<b>31.5</b>	<b>67.0</b>	<b>1.4</b>

**Source:** Ministry of the Prime Minister and Cabinet- Immigration Division,  
Ministry for Revenue- Customs Division and Samoa Bureau of Statistics.

**Note:** Visitors here, exclude transit.

1: Provisional figures

2: Figures are subject to rounding errors

Table 1: Monthly Arrival and Departure by Mode of Tavel and Net Migration, 2004 - 2014.

Period	Visitors Arrivals			Total Arrivals			Total Departures			Net Migration
	Air	Sea	Total	Air	Sea	Total	Air	Sea	Total	
<b>2004</b>	93,946	4,209	<b>98,155</b>	129,517	11,864	<b>141,381</b>	131,277	12,303	<b>143,580</b>	<b>-2,199</b>
<b>2005</b>	98,544	3,263	<b>101,807</b>	132,200	10,557	<b>142,757</b>	135,008	10,936	<b>145,944</b>	<b>-3,187</b>
<b>2006</b>	112,411	3,471	<b>115,882</b>	147,807	9,349	<b>157,156</b>	147,991	9,489	<b>157,480</b>	<b>-324</b>
<b>2007</b>	118,653	3,703	<b>122,356</b>	150,584	7,635	<b>158,219</b>	158,099	8,578	<b>166,677</b>	<b>-8,458</b>
<b>2008</b>	118,459	3,743	<b>122,202</b>	151,883	8,628	<b>160,511</b>	161,482	9,908	<b>171,390</b>	<b>-10,879</b>
<b>2009</b>	127,327	1,978	<b>129,305</b>	161,816	5,095	<b>166,911</b>	156,319	6,069	<b>162,388</b>	<b>4,523</b>
<b>2010</b>	126,970	2,530	<b>129,500</b>	162,052	5,539	<b>167,591</b>	164,426	6,326	<b>170,752</b>	<b>-3,161</b>
<b>2011</b>	124,706	2,499	<b>127,604</b>	146,278	5,112	<b>151,390</b>	144,200	5,606	<b>149,806</b>	<b>1,584</b>
<b>2012</b>	131,945	2,749	<b>134,694</b>	167,211	5,509	<b>172,720</b>	167,842	6,297	<b>174,139</b>	<b>-1,419</b>
<b>2013</b>	122,172	2,505	<b>124,677</b>	157,542	5,335	<b>162,877</b>	162,333	5,885	<b>168,218</b>	<b>-5,341</b>
<b>2014</b>	<b>16,814</b>	<b>413</b>	<b>17,227</b>	<b>24,310</b>	<b>804</b>	<b>25,114</b>	...	...	...	...
<b>2011</b>										
February	7,030	243	7,273	9,387	443	9,830	11,671	592	12,263	<b>-2,433</b>
March	8,623	152	8,775	11,241	371	11,612	12,214	535	12,749	<b>-1,137</b>
April	9,733	109	9,842	12,473	323	12,796	11,993	363	12,356	<b>440</b>
May	9,234	214	9,448	12,543	444	12,987	12,718	394	13,112	<b>-125</b>
June	11,125	267	11,392	14,192	632	14,824	12,437	752	13,189	<b>1,635</b>
July	14,009	260	14,269	17,124	525	17,649	17,000	374	17,374	<b>275</b>
August	10,899	219	11,118	13,383	372	13,755	14,332	638	14,970	<b>-1,215</b>
September	9,570	187	9,757	12,382	458	12,840	12,452	504	12,956	<b>-116</b>
October	9,868	150	10,018	12,646	298	12,944	13,028	353	13,381	<b>-437</b>
November	10,224	302	10,526	12,946	508	13,454	11,918	566	12,484	<b>970</b>
December	15,072	396	15,468	17,961	738	18,699	14,437	535	14,972	<b>3,727</b>
<b>2012</b>										
January	9,480	133	9,613	13,878	267	14,145	18,055	554	18,609	<b>-4,464</b>
February	7,033	212	7,245	9,453	369	9,822	12,300	449	12,749	<b>-2,927</b>
March	8,926	152	9,078	11,504	359	11,863	11,034	374	11,408	<b>455</b>
April	10,095	104	10,199	13,157	820	13,977	12,989	1,012	14,001	<b>-24</b>
May	11,908	502	12,410	15,264	730	15,994	11,514	485	11,999	<b>3,995</b>
June	13,883	379	14,262	16,747	535	17,282	16,316	849	17,165	<b>117</b>
July	14,913	135	15,048	17,705	261	17,966	18,995	319	19,314	<b>-1,348</b>
August	10,228	205	10,433	12,509	334	12,843	13,921	453	14,374	<b>-1,531</b>
September	10,749	267	11,016	13,653	422	14,075	13,743	329	14,072	<b>3</b>
October	9,604	97	9,701	12,378	330	12,708	13,764	460	14,224	<b>-1,516</b>
November	9,190	266	9,456	11,943	539	12,482	11,369	395	11,764	<b>718</b>
December	15,936	297	16,233	19,020	543	19,563	13,842	618	14,460	<b>5,103</b>
<b>2013</b>										
January	8,821	259	9,080	12,952	334	13,286	16,397	649	17,046	<b>-3,760</b>
February	6,386	161	6,547	8,756	407	9,163	12,210	515	12,725	<b>-3,562</b>
March	8,086	160	8,246	10,776	399	11,175	9,612	438	10,050	<b>1,125</b>
April	9,351	165	9,516	12,325	453	12,778	12,576	653	13,229	<b>-451</b>
May	9,216	190	9,406	12,496	375	12,871	11,492	606	12,098	<b>773</b>
June	12,027	296	12,323	14,964	537	15,501	13,660	460	14,120	<b>1,381</b>
July	13,068	207	13,275	15,901	593	16,494	16,442	464	16,906	<b>-412</b>
August	11,380	175	11,555	14,046	535	14,581	15,063	536	15,599	<b>-1,018</b>
September	11,016	211	11,227	13,741	293	14,034	13,844	349	14,193	<b>-159</b>
October	9,828	209	10,037	12,512	361	12,873	14,773	158	14,931	<b>-2,058</b>
November	8,768	190	8,958	11,753	453	12,206	12,082	553	12,635	<b>-429</b>
December	14,225	282	14,507	17,320	595	17,915	14,182	504	14,686	<b>3,229</b>
<b>2014</b>										
<b>January</b>	<b>9,879</b>	<b>256</b>	<b>10,135</b>	<b>14,755</b>	<b>578</b>	<b>15,333</b>	...	...	...	...
<b>February /1</b>	<b>6,935</b>	<b>157</b>	<b>7,092</b>	<b>9,555</b>	<b>226</b>	<b>9,781</b>	...	...	...	...

**Source :** Ministry of the Prime Minister and Cabinet- Immigration Division; Ministry for Revenue- Customs Division and Samoa Bureau of Statistics.

1: Provisional figures

... Denote not yet available

■ : Revised Figures

Table 2: Total Arrivals by Age, Purpose of Entry and Gender, February 2014 <sup>1</sup>

Age	Purpose of Entry																	
	Total			Visitors			Returning Residents			Transit			Temporary Residents			Others		
	Total	Male	Female	Total	Male	Female	Total	Male	Female	Total	Male	Female	Total	Male	Female	Total	Male	Female
<b>Total</b>	<b>9,781</b>	<b>5,225</b>	<b>4,556</b>	<b>6,057</b>	<b>3,170</b>	<b>2,887</b>	<b>2,689</b>	<b>1,427</b>	<b>1,262</b>	<b>654</b>	<b>419</b>	<b>235</b>	<b>271</b>	<b>149</b>	<b>122</b>	<b>110</b>	<b>60</b>	<b>50</b>
0 - 4	452	229	223	279	146	133	134	66	68	27	14	13	9	2	7	3	1	2
5 - 9	287	138	149	164	81	83	103	44	59	14	10	4	4	3	1	2	0	2
10 - 14	265	138	127	157	83	74	91	45	46	9	6	3	8	4	4	0	0	0
15 - 19	488	241	247	296	144	152	152	74	78	21	12	9	15	9	6	4	2	2
20 - 24	831	401	430	495	217	278	237	133	104	42	24	18	44	19	25	13	8	5
25 - 29	817	422	395	525	253	272	200	110	90	50	30	20	32	22	10	10	7	3
30 - 34	773	402	371	491	237	254	191	104	87	69	49	20	15	8	7	7	4	3
35 - 39	790	446	344	478	254	224	218	130	88	68	44	24	18	14	4	8	4	4
40 - 44	848	476	372	529	287	242	220	117	103	67	53	14	19	11	8	13	8	5
45 - 49	873	474	399	549	284	265	230	132	98	67	45	22	16	8	8	11	5	6
50 - 54	960	539	421	598	336	262	244	129	115	77	54	23	30	14	16	11	6	5
55 - 59	838	491	347	524	316	208	229	127	102	48	26	22	24	14	10	13	8	5
60 - 64	608	316	292	392	199	193	155	79	76	39	25	14	16	10	6	6	3	3
65 - 69	447	244	203	285	163	122	118	57	61	28	16	12	14	7	7	2	1	1
70 - 74	279	154	125	170	104	66	80	37	43	20	8	12	4	3	1	5	2	3
75 +	225	114	111	125	66	59	87	43	44	8	3	5	3	1	2	2	1	1
<b>% Distribution</b>	<b>100</b>	<b>53.4</b>	<b>46.6</b>	<b>61.9</b>	<b>32.4</b>	<b>29.5</b>	<b>27.5</b>	<b>14.6</b>	<b>12.9</b>	<b>6.7</b>	<b>4.3</b>	<b>2.4</b>	<b>2.8</b>	<b>1.5</b>	<b>1.2</b>	<b>1.1</b>	<b>0.6</b>	<b>0.5</b>

**Source:** Ministry of the Prime Minister and Cabinet - Immigration Division; Ministry for Revenue - Customs Division and Samoa Bureau of Statistics.

1: Provisional figures

2: Figures are subject to rounding errors

**Note:** The Purpose of Entry categories of Temporary Residents and Others were introduced as a result of the introduction of the new arrival card

Table 3: Total Visitors Arrivals by Country of Usual Residents and Mode of Travel, February 2014 <sup>1</sup>

Country of Usual Residence	Mode of Travel			Percentage (%) <sup>2</sup>
	Air	Sea	Total	
<b>OCEANIA</b>	<b>5,666</b>	<b>155</b>	<b>5,821</b>	<b>82.1</b>
American Samoa	1,159	25	1,184	16.7
Fiji	201	2	203	2.9
Cook Island	17	0	17	0.2
Other Pacific Is	184	85	269	3.8
New Zealand	2,599	16	2,615	36.9
Australia	1,506	27	1,533	21.6
<b>EUROPE</b>	<b>367</b>	<b>1</b>	<b>368</b>	<b>5.2</b>
United Kingdom	104	0	104	1.5
Scandinavia	33	0	33	0.5
Benelux	2	0	2	0.0
Germany	126	1	127	1.8
Other Europe	102	0	102	1.4
<b>AMERICA</b>	<b>517</b>	<b>1</b>	<b>518</b>	<b>7.3</b>
U.S.A	498	1	499	7.0
Canada	19	0	19	0.3
<b>ASIA</b>	<b>290</b>	<b>0</b>	<b>290</b>	<b>4.1</b>
Japan	31	0	31	0.4
China	118	0	118	1.7
Korea	6	0	6	0.1
Other Asia	135	0	135	1.9
<b>OTHERS</b>	<b>95</b>	<b>0</b>	<b>95</b>	<b>1.3</b>
<b>TOTAL</b>	<b>6,935</b>	<b>157</b>	<b>7,092</b>	<b>100%</b>
<b>PERCENTAGE DISTRIBUTION</b>	<b>97.8</b>	<b>1.5%</b>	<b>100%</b>	

**Source:** Ministry of the Prime Minister and Cabinet- Immigration Division; Ministry for Revenue- Customs Division and Samoa Bureau of Statistics.

1: Provisional figures.

2: Figures are subject to rounding errors

**Note:** (i) Visitors refer to all person visiting Samoa other than returning residents and also expatriates who are employed and living in Samoa (**include transit**).

(ii) Visitors also include Samoan citizens whose country of usual residence are country abroad.

(iii) **Scandinavia**- refers to countries of Norway, Sweden, Finland and Denmark.

(iv) **Benelux:** - refers to countries of Belgium, Netherlands and Luxembourg.

(v) **Exclude Cruise Liner Passengers.**





Table 4: Total Visitors by Usual Residence and Purpose of Visit, February 2014 <sup>1</sup>

Usual Residence	Purpose of Visit								
	Total	Percentage <sup>2</sup>	Holiday/ Vacation	Business/ Conference	Visit Friends/ Relatives	Sports	Transit	Others	Not Stated
<b>OCEANIA</b>	<b>5,821</b>	<b>82.1</b>	<b>1,463</b>	<b>592</b>	<b>2,420</b>	<b>52</b>	<b>473</b>	<b>252</b>	<b>569</b>
American Samoa	1,184	16.7	150	80	365	8	215	66	300
Fiji	203	2.9	15	74	33	2	23	29	27
Cook Island	17	0.2	4	2	6	0	2	2	1
Other Pacific Is	269	3.8	17	47	35	1	84	35	50
New Zealand	2,615	36.9	748	251	1,280	32	104	73	127
Australia	1,533	21.6	529	138	701	9	45	47	64
<b>EUROPE</b>	<b>368</b>	<b>5.2</b>	<b>273</b>	<b>17</b>	<b>33</b>	<b>1</b>	<b>16</b>	<b>16</b>	<b>12</b>
United Kingdom	104	1.5	59	11	10	0	13	4	7
Scandinavia	33	0.5	27	0	1	0	1	3	1
Benelux	2	0.0	2	0	0	0	0	0	0
Germany	127	1.8	112	1	5	1	1	3	4
Other Europe	102	1.4	73	5	17	0	1	6	0
<b>AMERICA</b>	<b>518</b>	<b>7.3</b>	<b>180</b>	<b>55</b>	<b>158</b>	<b>2</b>	<b>51</b>	<b>36</b>	<b>36</b>
U.S.A.	499	7.0	173	53	156	2	47	32	36
Canada	19	0.3	7	2	2	0	4	4	0
<b>ASIA</b>	<b>290</b>	<b>4.1</b>	<b>77</b>	<b>57</b>	<b>39</b>	<b>0</b>	<b>94</b>	<b>7</b>	<b>16</b>
Japan	31	0.4	11	11	4	0	4	1	0
China	118	1.7	23	28	16	0	40	0	11
Korea	6	0.1	2	0	4	0	0	0	0
Other Asia	135	1.9	41	18	15	0	50	6	5
<b>OTHER COUNTRIES</b>	<b>95</b>	<b>1.3</b>	<b>41</b>	<b>11</b>	<b>12</b>	<b>1</b>	<b>20</b>	<b>2</b>	<b>8</b>
<b>TOTAL</b>	<b>7,092</b>	<b>100</b>	<b>2,034</b>	<b>732</b>	<b>2,662</b>	<b>56</b>	<b>654</b>	<b>313</b>	<b>641</b>
<b>Percentage Distribution <sup>2</sup></b>	<b>100</b>		<b>28.7</b>	<b>10.3</b>	<b>37.5</b>	<b>0.8</b>	<b>9.2</b>	<b>4.4</b>	<b>9.0</b>

**Source:** Ministry of the Prime Minister and Cabinet- Immigration Division; Ministry for Revenue- Customs Division and Samoa Bureau of Statistics.

**Note :** Sports was re-introduced again in the Purpose of Visit Category as of August 2008.

1: Provisional figures

2: Figures are subject to rounding errors

Table 5: Total Arrivals by Carrier and Purpose of Entry, February 2014 <sup>1</sup>

Carrier	Purpose of Entry					
	Total		Returning Residents	Percentage <sup>2</sup>	Visitors	Percentage <sup>2</sup>
<b>Total</b>	<b>9,781</b>	<b>100%</b>	<b>2,689</b>	<b>27.5</b>	<b>7,092</b>	<b>72.5</b>
<b>AIR</b>						
Virgin Samoa <sup>3</sup>	3,920	40.1	1192	12.2	2,728	27.9
Polynesian	2,128	21.8	570	5.8	1,558	15.9
Inter Island	28	0.3	6	0.1	22	0.2
Air New Zealand	2,381	24.3	603	6.2	1,778	18.2
Fiji Airways <sup>4</sup>	1,009	10.3	247	2.5	762	7.8
Other Air Carrier	89	0.9	2	0.0	87	0.9
<b>SEA</b>						
Lady Naomi	87	0.9	54	0.6	33	0.3
Yacht	0	0.0	0	0.0	0	0.0
Other Sea Carrier	139	1.4	15	0.2	124	1.3

**Source:** Ministry of the Prime Minister and Cabinet- Immigration Division; Ministry for Revenue-Customs Division and Samoa Bureau of Statistics.

**Note:** Total visitors include transit.

- 1: Provisional figures
- 2: Figures are subject to rounding errors
- 3: Polynesian Blue is now called Virgin Samoa
- 4: Air Pacific is now called Fiji Airways

Table 6: Visitors by Duration of Stay and Place of Stay, February 2014 <sup>1</sup>

Duration of Stay	Place of Stay			
	Total	Hotel/Motel	Private	Not Stated
<b>Total</b>	<b>6,438</b>	<b>2,031</b>	<b>4,316</b>	<b>91</b>
1day	167	71	92	4
2days	377	233	136	8
3days	326	172	152	2
4days	327	145	182	0
5days	446	212	227	7
6days	303	162	137	4
7days	680	303	375	2
8-14days	1788	517	1258	13
15-30days	871	113	746	12
31-60days	136	32	104	0
61-90days	77	3	72	2
91-180days	54	5	47	2
181-365days	83	7	74	2
Not Stated	803	56	714	33
<b>Percentage Distribution <sup>2</sup></b>	<b>100</b>	<b>31.5</b>	<b>67.0</b>	<b>1.4</b>

**Source:** Ministry of the Prime Minister and Cabinet- Immigration Division,  
Ministry for Revenue- Customs Division and Samoa Bureau of Statistics.

**Note:** Visitors here, exclude transit.

1: Provisional figures

2: Figures are subject to rounding errors

Table 1: Monthly Arrival and Departure by Mode of Tavel and Net Migration, 2004 - 2014.

Period	Visitors Arrivals			Total Arrivals			Total Departures			Net Migration
	Air	Sea	Total	Air	Sea	Total	Air	Sea	Total	
<b>2004</b>	93,946	4,209	<b>98,155</b>	129,517	11,864	<b>141,381</b>	131,277	12,303	<b>143,580</b>	<b>-2,199</b>
<b>2005</b>	98,544	3,263	<b>101,807</b>	132,200	10,557	<b>142,757</b>	135,008	10,936	<b>145,944</b>	<b>-3,187</b>
<b>2006</b>	112,411	3,471	<b>115,882</b>	147,807	9,349	<b>157,156</b>	147,991	9,489	<b>157,480</b>	<b>-324</b>
<b>2007</b>	118,653	3,703	<b>122,356</b>	150,584	7,635	<b>158,219</b>	158,099	8,578	<b>166,677</b>	<b>-8,458</b>
<b>2008</b>	118,459	3,743	<b>122,202</b>	151,883	8,628	<b>160,511</b>	161,482	9,908	<b>171,390</b>	<b>-10,879</b>
<b>2009</b>	127,327	1,978	<b>129,305</b>	161,816	5,095	<b>166,911</b>	156,319	6,069	<b>162,388</b>	<b>4,523</b>
<b>2010</b>	126,970	2,530	<b>129,500</b>	162,052	5,539	<b>167,591</b>	164,426	6,326	<b>170,752</b>	<b>-3,161</b>
<b>2011</b>	124,706	2,499	<b>127,604</b>	146,278	5,112	<b>151,390</b>	144,200	5,606	<b>149,806</b>	<b>1,584</b>
<b>2012</b>	131,945	2,749	<b>134,694</b>	167,211	5,509	<b>172,720</b>	167,842	6,297	<b>174,139</b>	<b>-1,419</b>
<b>2013</b>	122,172	2,505	<b>124,677</b>	157,542	5,335	<b>162,877</b>	162,333	5,885	<b>168,218</b>	<b>-5,341</b>
<b>2014</b>	<b>16,814</b>	<b>413</b>	<b>17,227</b>	<b>24,310</b>	<b>804</b>	<b>25,114</b>	...	...	...	...
<b>2011</b>										
February	7,030	243	7,273	9,387	443	9,830	11,671	592	12,263	<b>-2,433</b>
March	8,623	152	8,775	11,241	371	11,612	12,214	535	12,749	<b>-1,137</b>
April	9,733	109	9,842	12,473	323	12,796	11,993	363	12,356	<b>440</b>
May	9,234	214	9,448	12,543	444	12,987	12,718	394	13,112	<b>-125</b>
June	11,125	267	11,392	14,192	632	14,824	12,437	752	13,189	<b>1,635</b>
July	14,009	260	14,269	17,124	525	17,649	17,000	374	17,374	<b>275</b>
August	10,899	219	11,118	13,383	372	13,755	14,332	638	14,970	<b>-1,215</b>
September	9,570	187	9,757	12,382	458	12,840	12,452	504	12,956	<b>-116</b>
October	9,868	150	10,018	12,646	298	12,944	13,028	353	13,381	<b>-437</b>
November	10,224	302	10,526	12,946	508	13,454	11,918	566	12,484	<b>970</b>
December	15,072	396	15,468	17,961	738	18,699	14,437	535	14,972	<b>3,727</b>
<b>2012</b>										
January	9,480	133	9,613	13,878	267	14,145	18,055	554	18,609	<b>-4,464</b>
February	7,033	212	7,245	9,453	369	9,822	12,300	449	12,749	<b>-2,927</b>
March	8,926	152	9,078	11,504	359	11,863	11,034	374	11,408	<b>455</b>
April	10,095	104	10,199	13,157	820	13,977	12,989	1,012	14,001	<b>-24</b>
May	11,908	502	12,410	15,264	730	15,994	11,514	485	11,999	<b>3,995</b>
June	13,883	379	14,262	16,747	535	17,282	16,316	849	17,165	<b>117</b>
July	14,913	135	15,048	17,705	261	17,966	18,995	319	19,314	<b>-1,348</b>
August	10,228	205	10,433	12,509	334	12,843	13,921	453	14,374	<b>-1,531</b>
September	10,749	267	11,016	13,653	422	14,075	13,743	329	14,072	<b>3</b>
October	9,604	97	9,701	12,378	330	12,708	13,764	460	14,224	<b>-1,516</b>
November	9,190	266	9,456	11,943	539	12,482	11,369	395	11,764	<b>718</b>
December	15,936	297	16,233	19,020	543	19,563	13,842	618	14,460	<b>5,103</b>
<b>2013</b>										
January	8,821	259	9,080	12,952	334	13,286	16,397	649	17,046	<b>-3,760</b>
February	6,386	161	6,547	8,756	407	9,163	12,210	515	12,725	<b>-3,562</b>
March	8,086	160	8,246	10,776	399	11,175	9,612	438	10,050	<b>1,125</b>
April	9,351	165	9,516	12,325	453	12,778	12,576	653	13,229	<b>-451</b>
May	9,216	190	9,406	12,496	375	12,871	11,492	606	12,098	<b>773</b>
June	12,027	296	12,323	14,964	537	15,501	13,660	460	14,120	<b>1,381</b>
July	13,068	207	13,275	15,901	593	16,494	16,442	464	16,906	<b>-412</b>
August	11,380	175	11,555	14,046	535	14,581	15,063	536	15,599	<b>-1,018</b>
September	11,016	211	11,227	13,741	293	14,034	13,844	349	14,193	<b>-159</b>
October	9,828	209	10,037	12,512	361	12,873	14,773	158	14,931	<b>-2,058</b>
November	8,768	190	8,958	11,753	453	12,206	12,082	553	12,635	<b>-429</b>
December	14,225	282	14,507	17,320	595	17,915	14,182	504	14,686	<b>3,229</b>
<b>2014</b>										
<b>January</b>	<b>9,879</b>	<b>256</b>	<b>10,135</b>	<b>14,755</b>	<b>578</b>	<b>15,333</b>	...	...	...	...
<b>February /1</b>	<b>6,935</b>	<b>157</b>	<b>7,092</b>	<b>9,555</b>	<b>226</b>	<b>9,781</b>	...	...	...	...

**Source :** Ministry of the Prime Minister and Cabinet- Immigration Division; Ministry for Revenue- Customs Division and Samoa Bureau of Statistics.

1: Provisional figures

... Denote not yet available

■ : Revised Figures

Table 2: Total Arrivals by Age, Purpose of Entry and Gender, February 2014 <sup>1</sup>

Age	Purpose of Entry																	
	Total			Visitors			Returning Residents			Transit			Temporary Residents			Others		
	Total	Male	Female	Total	Male	Female	Total	Male	Female	Total	Male	Female	Total	Male	Female	Total	Male	Female
<b>Total</b>	<b>9,781</b>	<b>5,225</b>	<b>4,556</b>	<b>6,057</b>	<b>3,170</b>	<b>2,887</b>	<b>2,689</b>	<b>1,427</b>	<b>1,262</b>	<b>654</b>	<b>419</b>	<b>235</b>	<b>271</b>	<b>149</b>	<b>122</b>	<b>110</b>	<b>60</b>	<b>50</b>
0 - 4	452	229	223	279	146	133	134	66	68	27	14	13	9	2	7	3	1	2
5 - 9	287	138	149	164	81	83	103	44	59	14	10	4	4	3	1	2	0	2
10 - 14	265	138	127	157	83	74	91	45	46	9	6	3	8	4	4	0	0	0
15 - 19	488	241	247	296	144	152	152	74	78	21	12	9	15	9	6	4	2	2
20 - 24	831	401	430	495	217	278	237	133	104	42	24	18	44	19	25	13	8	5
25 - 29	817	422	395	525	253	272	200	110	90	50	30	20	32	22	10	10	7	3
30 - 34	773	402	371	491	237	254	191	104	87	69	49	20	15	8	7	7	4	3
35 - 39	790	446	344	478	254	224	218	130	88	68	44	24	18	14	4	8	4	4
40 - 44	848	476	372	529	287	242	220	117	103	67	53	14	19	11	8	13	8	5
45 - 49	873	474	399	549	284	265	230	132	98	67	45	22	16	8	8	11	5	6
50 - 54	960	539	421	598	336	262	244	129	115	77	54	23	30	14	16	11	6	5
55 - 59	838	491	347	524	316	208	229	127	102	48	26	22	24	14	10	13	8	5
60 - 64	608	316	292	392	199	193	155	79	76	39	25	14	16	10	6	6	3	3
65 - 69	447	244	203	285	163	122	118	57	61	28	16	12	14	7	7	2	1	1
70 - 74	279	154	125	170	104	66	80	37	43	20	8	12	4	3	1	5	2	3
75 +	225	114	111	125	66	59	87	43	44	8	3	5	3	1	2	2	1	1
<b>% Distribution</b>	<b>100</b>	<b>53.4</b>	<b>46.6</b>	<b>61.9</b>	<b>32.4</b>	<b>29.5</b>	<b>27.5</b>	<b>14.6</b>	<b>12.9</b>	<b>6.7</b>	<b>4.3</b>	<b>2.4</b>	<b>2.8</b>	<b>1.5</b>	<b>1.2</b>	<b>1.1</b>	<b>0.6</b>	<b>0.5</b>

**Source:** Ministry of the Prime Minister and Cabinet - Immigration Division; Ministry for Revenue - Customs Division and Samoa Bureau of Statistics.

1: Provisional figures

2: Figures are subject to rounding errors

**Note:** The Purpose of Entry categories of Temporary Residents and Others were introduced as a result of the introduction of the new arrival card

Table 3: Total Visitors Arrivals by Country of Usual Residents and Mode of Travel, February 2014 <sup>1</sup>

Country of Usual Residence	Mode of Travel			Percentage (%) <sup>2</sup>
	Air	Sea	Total	
<b>OCEANIA</b>	<b>5,666</b>	<b>155</b>	<b>5,821</b>	<b>82.1</b>
American Samoa	1,159	25	1,184	16.7
Fiji	201	2	203	2.9
Cook Island	17	0	17	0.2
Other Pacific Is	184	85	269	3.8
New Zealand	2,599	16	2,615	36.9
Australia	1,506	27	1,533	21.6
<b>EUROPE</b>	<b>367</b>	<b>1</b>	<b>368</b>	<b>5.2</b>
United Kingdom	104	0	104	1.5
Scandinavia	33	0	33	0.5
Benelux	2	0	2	0.0
Germany	126	1	127	1.8
Other Europe	102	0	102	1.4
<b>AMERICA</b>	<b>517</b>	<b>1</b>	<b>518</b>	<b>7.3</b>
U.S.A	498	1	499	7.0
Canada	19	0	19	0.3
<b>ASIA</b>	<b>290</b>	<b>0</b>	<b>290</b>	<b>4.1</b>
Japan	31	0	31	0.4
China	118	0	118	1.7
Korea	6	0	6	0.1
Other Asia	135	0	135	1.9
<b>OTHERS</b>	<b>95</b>	<b>0</b>	<b>95</b>	<b>1.3</b>
<b>TOTAL</b>	<b>6,935</b>	<b>157</b>	<b>7,092</b>	<b>100%</b>
<b>PERCENTAGE DISTRIBUTION</b>	<b>97.8</b>	<b>1.5%</b>	<b>100%</b>	

**Source:** Ministry of the Prime Minister and Cabinet- Immigration Division; Ministry for Revenue- Customs Division and Samoa Bureau of Statistics.

1: Provisional figures.

2: Figures are subject to rounding errors

**Note:** (i) Visitors refer to all person visiting Samoa other than returning residents and also expatriates who are employed and living in Samoa (**include transit**).

(ii) Visitors also include Samoan citizens whose country of usual residence are country abroad.

(iii) **Scandinavia**- refers to countries of Norway, Sweden, Finland and Denmark.

(iv) **Benelux:** - refers to countries of Belgium, Netherlands and Luxembourg.

(v) **Exclude Cruise Liner Passengers.**





Table 4: Total Visitors by Usual Residence and Purpose of Visit, February 2014 <sup>1</sup>

Usual Residence	Purpose of Visit								
	Total	Percentage <sup>2</sup>	Holiday/ Vacation	Business/ Conference	Visit Friends/ Relatives	Sports	Transit	Others	Not Stated
<b>OCEANIA</b>	<b>5,821</b>	<b>82.1</b>	<b>1,463</b>	<b>592</b>	<b>2,420</b>	<b>52</b>	<b>473</b>	<b>252</b>	<b>569</b>
American Samoa	1,184	16.7	150	80	365	8	215	66	300
Fiji	203	2.9	15	74	33	2	23	29	27
Cook Island	17	0.2	4	2	6	0	2	2	1
Other Pacific Is	269	3.8	17	47	35	1	84	35	50
New Zealand	2,615	36.9	748	251	1,280	32	104	73	127
Australia	1,533	21.6	529	138	701	9	45	47	64
<b>EUROPE</b>	<b>368</b>	<b>5.2</b>	<b>273</b>	<b>17</b>	<b>33</b>	<b>1</b>	<b>16</b>	<b>16</b>	<b>12</b>
United Kingdom	104	1.5	59	11	10	0	13	4	7
Scandinavia	33	0.5	27	0	1	0	1	3	1
Benelux	2	0.0	2	0	0	0	0	0	0
Germany	127	1.8	112	1	5	1	1	3	4
Other Europe	102	1.4	73	5	17	0	1	6	0
<b>AMERICA</b>	<b>518</b>	<b>7.3</b>	<b>180</b>	<b>55</b>	<b>158</b>	<b>2</b>	<b>51</b>	<b>36</b>	<b>36</b>
U.S.A.	499	7.0	173	53	156	2	47	32	36
Canada	19	0.3	7	2	2	0	4	4	0
<b>ASIA</b>	<b>290</b>	<b>4.1</b>	<b>77</b>	<b>57</b>	<b>39</b>	<b>0</b>	<b>94</b>	<b>7</b>	<b>16</b>
Japan	31	0.4	11	11	4	0	4	1	0
China	118	1.7	23	28	16	0	40	0	11
Korea	6	0.1	2	0	4	0	0	0	0
Other Asia	135	1.9	41	18	15	0	50	6	5
<b>OTHER COUNTRIES</b>	<b>95</b>	<b>1.3</b>	<b>41</b>	<b>11</b>	<b>12</b>	<b>1</b>	<b>20</b>	<b>2</b>	<b>8</b>
<b>TOTAL</b>	<b>7,092</b>	<b>100</b>	<b>2,034</b>	<b>732</b>	<b>2,662</b>	<b>56</b>	<b>654</b>	<b>313</b>	<b>641</b>
<b>Percentage Distribution <sup>2</sup></b>	<b>100</b>		<b>28.7</b>	<b>10.3</b>	<b>37.5</b>	<b>0.8</b>	<b>9.2</b>	<b>4.4</b>	<b>9.0</b>

**Source:** Ministry of the Prime Minister and Cabinet- Immigration Division; Ministry for Revenue- Customs Division and Samoa Bureau of Statistics.

**Note :** Sports was re-introduced again in the Purpose of Visit Category as of August 2008.

1: Provisional figures

2: Figures are subject to rounding errors

Table 5: Total Arrivals by Carrier and Purpose of Entry, February 2014 <sup>1</sup>

Carrier	Total		Purpose of Entry			
			Returning Residents	Percentage <sup>2</sup>	Visitors	Percentage <sup>2</sup>
<b>Total</b>	<b>9,781</b>	<b>100%</b>	<b>2,689</b>	<b>27.5</b>	<b>7,092</b>	<b>72.5</b>
<b>AIR</b>						
Virgin Samoa <sup>3</sup>	3,920	40.1	1192	12.2	2,728	27.9
Polynesian	2,128	21.8	570	5.8	1,558	15.9
Inter Island	28	0.3	6	0.1	22	0.2
Air New Zealand	2,381	24.3	603	6.2	1,778	18.2
Fiji Airways <sup>4</sup>	1,009	10.3	247	2.5	762	7.8
Other Air Carrier	89	0.9	2	0.0	87	0.9
<b>SEA</b>						
Lady Naomi	87	0.9	54	0.6	33	0.3
Yacht	0	0.0	0	0.0	0	0.0
Other Sea Carrier	139	1.4	15	0.2	124	1.3

**Source:** Ministry of the Prime Minister and Cabinet- Immigration Division; Ministry for Revenue-Customs Division and Samoa Bureau of Statistics.

**Note:** Total visitors include transit.

- 1: Provisional figures
- 2: Figures are subject to rounding errors
- 3: Polynesian Blue is now called Virgin Samoa
- 4: Air Pacific is now called Fiji Airways

Table 6: Visitors by Duration of Stay and Place of Stay, February 2014 <sup>1</sup>

Duration of Stay	Place of Stay			
	Total	Hotel/Motel	Private	Not Stated
<b>Total</b>	<b>6,438</b>	<b>2,031</b>	<b>4,316</b>	<b>91</b>
1day	167	71	92	4
2days	377	233	136	8
3days	326	172	152	2
4days	327	145	182	0
5days	446	212	227	7
6days	303	162	137	4
7days	680	303	375	2
8-14days	1788	517	1258	13
15-30days	871	113	746	12
31-60days	136	32	104	0
61-90days	77	3	72	2
91-180days	54	5	47	2
181-365days	83	7	74	2
Not Stated	803	56	714	33
<b>Percentage Distribution <sup>2</sup></b>	<b>100</b>	<b>31.5</b>	<b>67.0</b>	<b>1.4</b>

**Source:** Ministry of the Prime Minister and Cabinet- Immigration Division,  
Ministry for Revenue- Customs Division and Samoa Bureau of Statistics.

**Note:** Visitors here, exclude transit.

1: Provisional figures

2: Figures are subject to rounding errors

Table 1: Monthly Arrival and Departure by Mode of Tavel and Net Migration, 2004 - 2014.

Period	Visitors Arrivals			Total Arrivals			Total Departures			Net Migration
	Air	Sea	Total	Air	Sea	Total	Air	Sea	Total	
<b>2004</b>	93,946	4,209	<b>98,155</b>	129,517	11,864	<b>141,381</b>	131,277	12,303	<b>143,580</b>	<b>-2,199</b>
<b>2005</b>	98,544	3,263	<b>101,807</b>	132,200	10,557	<b>142,757</b>	135,008	10,936	<b>145,944</b>	<b>-3,187</b>
<b>2006</b>	112,411	3,471	<b>115,882</b>	147,807	9,349	<b>157,156</b>	147,991	9,489	<b>157,480</b>	<b>-324</b>
<b>2007</b>	118,653	3,703	<b>122,356</b>	150,584	7,635	<b>158,219</b>	158,099	8,578	<b>166,677</b>	<b>-8,458</b>
<b>2008</b>	118,459	3,743	<b>122,202</b>	151,883	8,628	<b>160,511</b>	161,482	9,908	<b>171,390</b>	<b>-10,879</b>
<b>2009</b>	127,327	1,978	<b>129,305</b>	161,816	5,095	<b>166,911</b>	156,319	6,069	<b>162,388</b>	<b>4,523</b>
<b>2010</b>	126,970	2,530	<b>129,500</b>	162,052	5,539	<b>167,591</b>	164,426	6,326	<b>170,752</b>	<b>-3,161</b>
<b>2011</b>	124,706	2,499	<b>127,604</b>	146,278	5,112	<b>151,390</b>	144,200	5,606	<b>149,806</b>	<b>1,584</b>
<b>2012</b>	131,945	2,749	<b>134,694</b>	167,211	5,509	<b>172,720</b>	167,842	6,297	<b>174,139</b>	<b>-1,419</b>
<b>2013</b>	122,172	2,505	<b>124,677</b>	157,542	5,335	<b>162,877</b>	162,333	5,885	<b>168,218</b>	<b>-5,341</b>
<b>2014</b>	<b>16,814</b>	<b>413</b>	<b>17,227</b>	<b>24,310</b>	<b>804</b>	<b>25,114</b>	...	...	...	...
<b>2011</b>										
February	7,030	243	7,273	9,387	443	9,830	11,671	592	12,263	<b>-2,433</b>
March	8,623	152	8,775	11,241	371	11,612	12,214	535	12,749	<b>-1,137</b>
April	9,733	109	9,842	12,473	323	12,796	11,993	363	12,356	<b>440</b>
May	9,234	214	9,448	12,543	444	12,987	12,718	394	13,112	<b>-125</b>
June	11,125	267	11,392	14,192	632	14,824	12,437	752	13,189	<b>1,635</b>
July	14,009	260	14,269	17,124	525	17,649	17,000	374	17,374	<b>275</b>
August	10,899	219	11,118	13,383	372	13,755	14,332	638	14,970	<b>-1,215</b>
September	9,570	187	9,757	12,382	458	12,840	12,452	504	12,956	<b>-116</b>
October	9,868	150	10,018	12,646	298	12,944	13,028	353	13,381	<b>-437</b>
November	10,224	302	10,526	12,946	508	13,454	11,918	566	12,484	<b>970</b>
December	15,072	396	15,468	17,961	738	18,699	14,437	535	14,972	<b>3,727</b>
<b>2012</b>										
January	9,480	133	9,613	13,878	267	14,145	18,055	554	18,609	<b>-4,464</b>
February	7,033	212	7,245	9,453	369	9,822	12,300	449	12,749	<b>-2,927</b>
March	8,926	152	9,078	11,504	359	11,863	11,034	374	11,408	<b>455</b>
April	10,095	104	10,199	13,157	820	13,977	12,989	1,012	14,001	<b>-24</b>
May	11,908	502	12,410	15,264	730	15,994	11,514	485	11,999	<b>3,995</b>
June	13,883	379	14,262	16,747	535	17,282	16,316	849	17,165	<b>117</b>
July	14,913	135	15,048	17,705	261	17,966	18,995	319	19,314	<b>-1,348</b>
August	10,228	205	10,433	12,509	334	12,843	13,921	453	14,374	<b>-1,531</b>
September	10,749	267	11,016	13,653	422	14,075	13,743	329	14,072	<b>3</b>
October	9,604	97	9,701	12,378	330	12,708	13,764	460	14,224	<b>-1,516</b>
November	9,190	266	9,456	11,943	539	12,482	11,369	395	11,764	<b>718</b>
December	15,936	297	16,233	19,020	543	19,563	13,842	618	14,460	<b>5,103</b>
<b>2013</b>										
January	8,821	259	9,080	12,952	334	13,286	16,397	649	17,046	<b>-3,760</b>
February	6,386	161	6,547	8,756	407	9,163	12,210	515	12,725	<b>-3,562</b>
March	8,086	160	8,246	10,776	399	11,175	9,612	438	10,050	<b>1,125</b>
April	9,351	165	9,516	12,325	453	12,778	12,576	653	13,229	<b>-451</b>
May	9,216	190	9,406	12,496	375	12,871	11,492	606	12,098	<b>773</b>
June	12,027	296	12,323	14,964	537	15,501	13,660	460	14,120	<b>1,381</b>
July	13,068	207	13,275	15,901	593	16,494	16,442	464	16,906	<b>-412</b>
August	11,380	175	11,555	14,046	535	14,581	15,063	536	15,599	<b>-1,018</b>
September	11,016	211	11,227	13,741	293	14,034	13,844	349	14,193	<b>-159</b>
October	9,828	209	10,037	12,512	361	12,873	14,773	158	14,931	<b>-2,058</b>
November	8,768	190	8,958	11,753	453	12,206	12,082	553	12,635	<b>-429</b>
December	14,225	282	14,507	17,320	595	17,915	14,182	504	14,686	<b>3,229</b>
<b>2014</b>										
<b>January</b>	<b>9,879</b>	<b>256</b>	<b>10,135</b>	<b>14,755</b>	<b>578</b>	<b>15,333</b>	...	...	...	...
<b>February /1</b>	<b>6,935</b>	<b>157</b>	<b>7,092</b>	<b>9,555</b>	<b>226</b>	<b>9,781</b>	...	...	...	...

**Source :** Ministry of the Prime Minister and Cabinet- Immigration Division; Ministry for Revenue- Customs Division and Samoa Bureau of Statistics.

1: Provisional figures

... Denote not yet available

■ : Revised Figures

Table 2: Total Arrivals by Age, Purpose of Entry and Gender, February 2014 <sup>1</sup>

Age	Purpose of Entry																	
	Total			Visitors			Returning Residents			Transit			Temporary Residents			Others		
	Total	Male	Female	Total	Male	Female	Total	Male	Female	Total	Male	Female	Total	Male	Female	Total	Male	Female
<b>Total</b>	<b>9,781</b>	<b>5,225</b>	<b>4,556</b>	<b>6,057</b>	<b>3,170</b>	<b>2,887</b>	<b>2,689</b>	<b>1,427</b>	<b>1,262</b>	<b>654</b>	<b>419</b>	<b>235</b>	<b>271</b>	<b>149</b>	<b>122</b>	<b>110</b>	<b>60</b>	<b>50</b>
0 - 4	452	229	223	279	146	133	134	66	68	27	14	13	9	2	7	3	1	2
5 - 9	287	138	149	164	81	83	103	44	59	14	10	4	4	3	1	2	0	2
10 - 14	265	138	127	157	83	74	91	45	46	9	6	3	8	4	4	0	0	0
15 - 19	488	241	247	296	144	152	152	74	78	21	12	9	15	9	6	4	2	2
20 - 24	831	401	430	495	217	278	237	133	104	42	24	18	44	19	25	13	8	5
25 - 29	817	422	395	525	253	272	200	110	90	50	30	20	32	22	10	10	7	3
30 - 34	773	402	371	491	237	254	191	104	87	69	49	20	15	8	7	7	4	3
35 - 39	790	446	344	478	254	224	218	130	88	68	44	24	18	14	4	8	4	4
40 - 44	848	476	372	529	287	242	220	117	103	67	53	14	19	11	8	13	8	5
45 - 49	873	474	399	549	284	265	230	132	98	67	45	22	16	8	8	11	5	6
50 - 54	960	539	421	598	336	262	244	129	115	77	54	23	30	14	16	11	6	5
55 - 59	838	491	347	524	316	208	229	127	102	48	26	22	24	14	10	13	8	5
60 - 64	608	316	292	392	199	193	155	79	76	39	25	14	16	10	6	6	3	3
65 - 69	447	244	203	285	163	122	118	57	61	28	16	12	14	7	7	2	1	1
70 - 74	279	154	125	170	104	66	80	37	43	20	8	12	4	3	1	5	2	3
75 +	225	114	111	125	66	59	87	43	44	8	3	5	3	1	2	2	1	1
<b>% Distribution</b>	<b>100</b>	<b>53.4</b>	<b>46.6</b>	<b>61.9</b>	<b>32.4</b>	<b>29.5</b>	<b>27.5</b>	<b>14.6</b>	<b>12.9</b>	<b>6.7</b>	<b>4.3</b>	<b>2.4</b>	<b>2.8</b>	<b>1.5</b>	<b>1.2</b>	<b>1.1</b>	<b>0.6</b>	<b>0.5</b>

**Source:** Ministry of the Prime Minister and Cabinet - Immigration Division; Ministry for Revenue - Customs Division and Samoa Bureau of Statistics.

1: Provisional figures

2: Figures are subject to rounding errors

**Note:** The Purpose of Entry categories of Temporary Residents and Others were introduced as a result of the introduction of the new arrival card

Table 3: Total Visitors Arrivals by Country of Usual Residents and Mode of Travel, February 2014 <sup>1</sup>

Country of Usual Residence	Mode of Travel			Percentage (%) <sup>2</sup>
	Air	Sea	Total	
<b>OCEANIA</b>	<b>5,666</b>	<b>155</b>	<b>5,821</b>	<b>82.1</b>
American Samoa	1,159	25	1,184	16.7
Fiji	201	2	203	2.9
Cook Island	17	0	17	0.2
Other Pacific Is	184	85	269	3.8
New Zealand	2,599	16	2,615	36.9
Australia	1,506	27	1,533	21.6
<b>EUROPE</b>	<b>367</b>	<b>1</b>	<b>368</b>	<b>5.2</b>
United Kingdom	104	0	104	1.5
Scandinavia	33	0	33	0.5
Benelux	2	0	2	0.0
Germany	126	1	127	1.8
Other Europe	102	0	102	1.4
<b>AMERICA</b>	<b>517</b>	<b>1</b>	<b>518</b>	<b>7.3</b>
U.S.A	498	1	499	7.0
Canada	19	0	19	0.3
<b>ASIA</b>	<b>290</b>	<b>0</b>	<b>290</b>	<b>4.1</b>
Japan	31	0	31	0.4
China	118	0	118	1.7
Korea	6	0	6	0.1
Other Asia	135	0	135	1.9
<b>OTHERS</b>	<b>95</b>	<b>0</b>	<b>95</b>	<b>1.3</b>
<b>TOTAL</b>	<b>6,935</b>	<b>157</b>	<b>7,092</b>	<b>100%</b>
<b>PERCENTAGE DISTRIBUTION</b>	<b>97.8</b>	<b>1.5%</b>	<b>100%</b>	

**Source:** Ministry of the Prime Minister and Cabinet- Immigration Division; Ministry for Revenue- Customs Division and Samoa Bureau of Statistics.

1: Provisional figures.

2: Figures are subject to rounding errors

**Note:** (i) Visitors refer to all person visiting Samoa other than returning residents and also expatriates who are employed and living in Samoa (**include transit**).

(ii) Visitors also include Samoan citizens whose country of usual residence are country abroad.

(iii) **Scandinavia**- refers to countries of Norway, Sweden, Finland and Denmark.

(iv) **Benelux:** - refers to countries of Belgium, Netherlands and Luxembourg.

(v) **Exclude Cruise Liner Passengers.**





Table 4: Total Visitors by Usual Residence and Purpose of Visit, February 2014 <sup>1</sup>

Usual Residence	Purpose of Visit								
	Total	Percentage <sup>2</sup>	Holiday/ Vacation	Business/ Conference	Visit Friends/ Relatives	Sports	Transit	Others	Not Stated
<b>OCEANIA</b>	<b>5,821</b>	<b>82.1</b>	<b>1,463</b>	<b>592</b>	<b>2,420</b>	<b>52</b>	<b>473</b>	<b>252</b>	<b>569</b>
American Samoa	1,184	16.7	150	80	365	8	215	66	300
Fiji	203	2.9	15	74	33	2	23	29	27
Cook Island	17	0.2	4	2	6	0	2	2	1
Other Pacific Is	269	3.8	17	47	35	1	84	35	50
New Zealand	2,615	36.9	748	251	1,280	32	104	73	127
Australia	1,533	21.6	529	138	701	9	45	47	64
<b>EUROPE</b>	<b>368</b>	<b>5.2</b>	<b>273</b>	<b>17</b>	<b>33</b>	<b>1</b>	<b>16</b>	<b>16</b>	<b>12</b>
United Kingdom	104	1.5	59	11	10	0	13	4	7
Scandinavia	33	0.5	27	0	1	0	1	3	1
Benelux	2	0.0	2	0	0	0	0	0	0
Germany	127	1.8	112	1	5	1	1	3	4
Other Europe	102	1.4	73	5	17	0	1	6	0
<b>AMERICA</b>	<b>518</b>	<b>7.3</b>	<b>180</b>	<b>55</b>	<b>158</b>	<b>2</b>	<b>51</b>	<b>36</b>	<b>36</b>
U.S.A.	499	7.0	173	53	156	2	47	32	36
Canada	19	0.3	7	2	2	0	4	4	0
<b>ASIA</b>	<b>290</b>	<b>4.1</b>	<b>77</b>	<b>57</b>	<b>39</b>	<b>0</b>	<b>94</b>	<b>7</b>	<b>16</b>
Japan	31	0.4	11	11	4	0	4	1	0
China	118	1.7	23	28	16	0	40	0	11
Korea	6	0.1	2	0	4	0	0	0	0
Other Asia	135	1.9	41	18	15	0	50	6	5
<b>OTHER COUNTRIES</b>	<b>95</b>	<b>1.3</b>	<b>41</b>	<b>11</b>	<b>12</b>	<b>1</b>	<b>20</b>	<b>2</b>	<b>8</b>
<b>TOTAL</b>	<b>7,092</b>	<b>100</b>	<b>2,034</b>	<b>732</b>	<b>2,662</b>	<b>56</b>	<b>654</b>	<b>313</b>	<b>641</b>
<b>Percentage Distribution <sup>2</sup></b>	<b>100</b>		<b>28.7</b>	<b>10.3</b>	<b>37.5</b>	<b>0.8</b>	<b>9.2</b>	<b>4.4</b>	<b>9.0</b>

**Source:** Ministry of the Prime Minister and Cabinet- Immigration Division; Ministry for Revenue- Customs Division and Samoa Bureau of Statistics.

**Note :** Sports was re-introduced again in the Purpose of Visit Category as of August 2008.

1: Provisional figures

2: Figures are subject to rounding errors

Table 5: Total Arrivals by Carrier and Purpose of Entry, February 2014 <sup>1</sup>

Carrier	Purpose of Entry					
	Total		Returning Residents	Percentage <sup>2</sup>	Visitors	Percentage <sup>2</sup>
<b>Total</b>	<b>9,781</b>	<b>100%</b>	<b>2,689</b>	<b>27.5</b>	<b>7,092</b>	<b>72.5</b>
<b>AIR</b>						
Virgin Samoa <sup>3</sup>	3,920	40.1	1192	12.2	2,728	27.9
Polynesian	2,128	21.8	570	5.8	1,558	15.9
Inter Island	28	0.3	6	0.1	22	0.2
Air New Zealand	2,381	24.3	603	6.2	1,778	18.2
Fiji Airways <sup>4</sup>	1,009	10.3	247	2.5	762	7.8
Other Air Carrier	89	0.9	2	0.0	87	0.9
<b>SEA</b>						
Lady Naomi	87	0.9	54	0.6	33	0.3
Yacht	0	0.0	0	0.0	0	0.0
Other Sea Carrier	139	1.4	15	0.2	124	1.3

**Source:** Ministry of the Prime Minister and Cabinet- Immigration Division; Ministry for Revenue-Customs Division and Samoa Bureau of Statistics.

**Note:** Total visitors include transit.

- 1: Provisional figures
- 2: Figures are subject to rounding errors
- 3: Polynesian Blue is now called Virgin Samoa
- 4: Air Pacific is now called Fiji Airways

Table 6: Visitors by Duration of Stay and Place of Stay, February 2014 <sup>1</sup>

Duration of Stay	Place of Stay			
	Total	Hotel/Motel	Private	Not Stated
<b>Total</b>	<b>6,438</b>	<b>2,031</b>	<b>4,316</b>	<b>91</b>
1day	167	71	92	4
2days	377	233	136	8
3days	326	172	152	2
4days	327	145	182	0
5days	446	212	227	7
6days	303	162	137	4
7days	680	303	375	2
8-14days	1788	517	1258	13
15-30days	871	113	746	12
31-60days	136	32	104	0
61-90days	77	3	72	2
91-180days	54	5	47	2
181-365days	83	7	74	2
Not Stated	803	56	714	33
<b>Percentage Distribution <sup>2</sup></b>	<b>100</b>	<b>31.5</b>	<b>67.0</b>	<b>1.4</b>

**Source:** Ministry of the Prime Minister and Cabinet- Immigration Division,  
Ministry for Revenue- Customs Division and Samoa Bureau of Statistics.

**Note:** Visitors here, exclude transit.

1: Provisional figures

2: Figures are subject to rounding errors