



GOVERNMENT OF SAMOA

SAMOA BUREAU OF STATISTICS

IMPORT PRICE INDEX - June 2014 quarter **(Base Period: Quarter 1 2009 = 100.0)**

Issue No. 16

Date: 29 July 2014

The Import Price Index (MPI) measures changes in the cost, insurance, and freight (CIF) prices of imports of merchandise into Samoa. It is a fixed weight index with Quarter 1 2009 = 100.0 and is calculated on a quarterly basis using the International Harmonized System of Trade Classification (HS). The items included in the index were selected on the basis of their importance to the total import.

The scope of the MPI relates to the following sections of the International Harmonized System of Trade Classification (HS): 1. Live Animals: Animal Products, 2. Vegetable Products, 3. Animal or Vegetable fats and oils, 4. Food and Beverages and 5. Mineral Products. The index represents 50 percent of total imports.

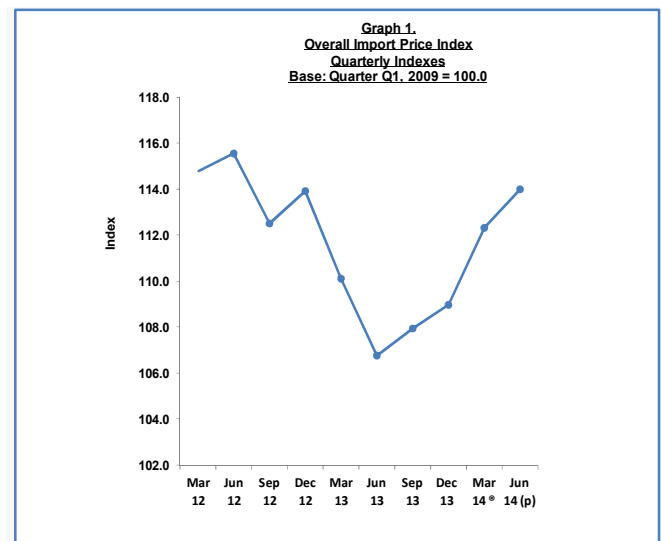
Key findings

- Import price index in the June 2014 quarter fell 1.5 percent when compared to the March 2014 quarter
- Food and beverages product prices were the most significant upward contribution to import prices.

Overview

The import price index for the June 2014 quarter showed overall decreased 1.5 percent when compared to the March 2014 quarter. In comparison with the June 2013 quarter, the current import prices increased 6.7 percent.

The four quarters ending June 2014 showed a slight decrease of 0.02 percent in the overall import price compared to the four quarters ending June 2013. See table 1 and graph 1

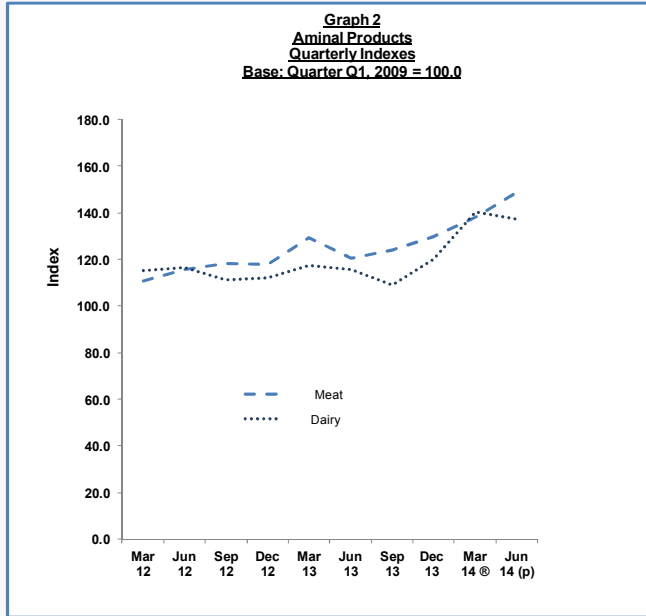


Source: Samoa Bureau of Statistics

HS Section 1: Live Animals; Animal Products prices rise 4.7%

Live Animals and Animal Products prices rose 4.7 percent in the June 2014 quarter, following a rise of 9.5 percent in the March 2014. The rise was influenced by higher prices for chicken (up 14.1 percent). Prices for lamb meats also rose. When compared to the June 2013 quarter, the

current prices for live animals and animal products increased 22 percent. In the four quarters ending June 2014, live animals and animal products prices increased 18.7 percent when compared to the four quarters ending June 2013. See table 1 and graph 2.

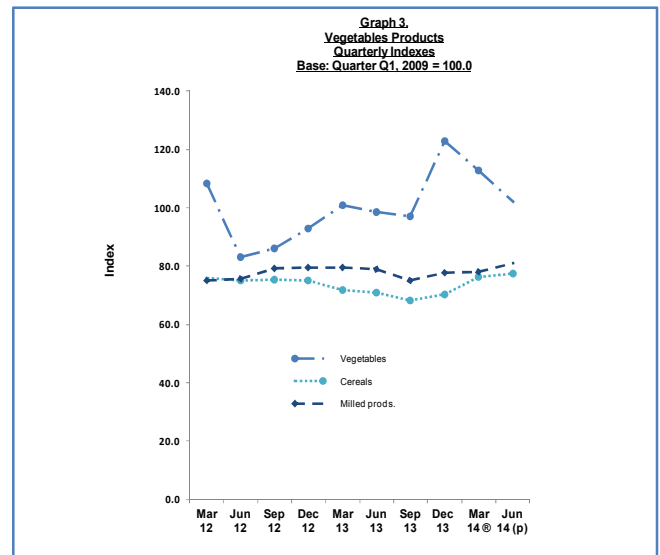


Source: Samoa Bureau of Statistics

HS Section 2: Vegetable Products prices rise 0.2%

Vegetable Products prices rose 0.2 percent in the June 2014 quarter. This rise was influenced by higher prices for milled products (up 3.8 percent) and cereals (up 1.8 percent) and partly offset by lower prices for vegetables (down 9.3 percent). When compared to the June 2013 quarter, the current prices of vegetable products increased 4.9 percent.

Reviewing the four quarters ending June 2014 over the four quarters ending June 2013, the current price for vegetable products increased 2.2 percent. See table 1 and graph 3.

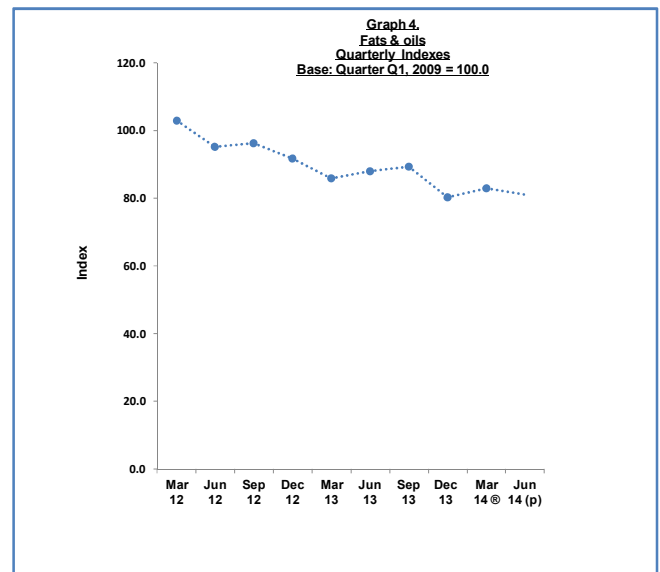


Source: Samoa Bureau of Statistics

HS Section 3: Animal or Vegetable fats & oils prices fall 2.5%

Animal or Vegetable fats and oils prices in the June 2014 quarter was 2.5 percent and 8.1 percent lower than the March 2014 quarter and June 2013 quarter respectively. The latest fall was influenced by lower prices for vegetable oils (down 6.9 percent) whereas the soya-bean oil remained unchanged from the March 2014 quarter.

The overall price for animal or vegetable fats and oils in the four quarters ending June 2014 was 7.8 percent higher than the four quarters ending June 2013. See table 1 and graph 4

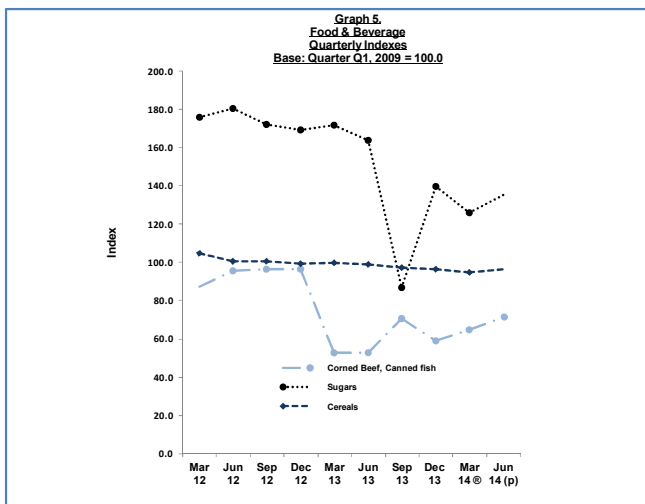


Source: Samoa Bureau of Statistics

HS Section 4: Food and Beverages prices rise 6.2%

Food and Beverages prices rose 6.2 percent in the June 2014 quarter, following a 1.4 percent fall in the March 2013 quarter. The rise in food and beverages prices was influenced by corned beef and canned fish (up 10.1 percent), sugar (up 7.4 percent) and cereals (up 1.4 percent). When compared to the June 2013 quarter, the current prices of food and beverages increased 0.2 percent. Strengthening New Zealand and Australian dollars has an upward impact on food and beverages prices.

In comparing the four quarters ending June 2014 over the four quarters ending June 2013, the overall price for food and beverages decreased 15.2 percent. See table 1 and graph 5.

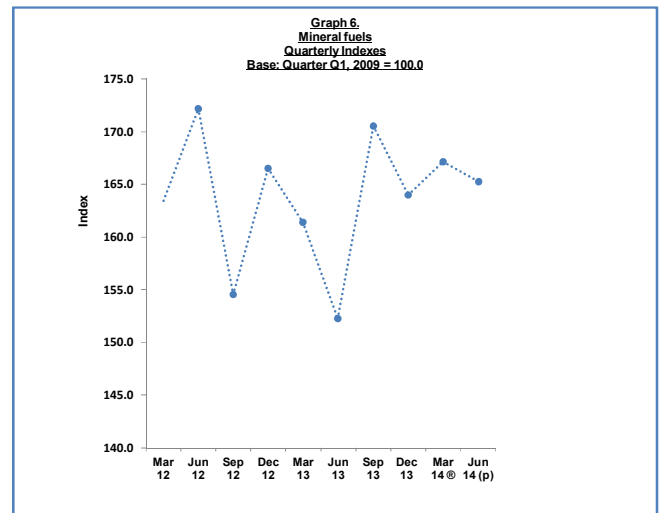


Source: Samoa Bureau of Statistics

HS Section 5: Mineral Products prices fell 1.1%

Mineral products prices fell 1.1 percent in the June 2014 quarter. This fall was mainly driven by lower prices of kerosene and diesel in the quarter under review. In comparison with June 2013 quarter, the current prices of mineral products increased 8.5 percent.

The overall price for mineral products in the four quarters ending June 2014 was 5 percent higher than the price of the four quarters ending June 2013. See table 1 and graph 6.



Source: Samoa Bureau of Statistics

Note: Because of recent difficulties in obtaining information from importers, a portion of the index is imputed based on information from other importers.

If you would like more information about the Import Price Index for Quarter 2 2014, please contact the Economics Division of the Samoa Bureau of Statistics at:

SAMOA BUREAU OF STATISTICS

*Economic Statistics Division
FMFM II Building, Level 1
P O Box 1151
Apia, Samoa*

*Phone: (685) 62015/62016
Fax: (685) 24675
E-mail: infostats@sbs.gov.ws*

The MPI the September 2014 quarter will be ready on 31th October 2014

Muagututi'a Sefuiva Reupena.
GOVERNMENT STATISTICIAN.

IMPORT PRICE INDEX
Base: Quarter Q1, 2009 = 100.0

Table 1

CODE	DESCRIPTION	Weight	2012				2013				2014		% Change	
			Mar 12	Jun 12	Sep 12	Dec 12	Mar 13	Jun 13	Sep 13	Dec 13	Mar 14 @ Jun 14 (p)	Jun-14 / Mar -14	Jun-14 / Jun-13	
I	ANIMAL PRODUCTS	100	112.1	115.9	116.3	116.0	125.7	119.1	119.6	126.8	138.8	145.2	4.7	21.9
02	Meat	71.2	110.8	115.6	118.4	117.6	129.1	120.6	123.9	129.5	138.1	148.6	7.6	23.2
04	Dairy	28.8	115.3	116.4	111.3	112.2	117.4	115.6	109.0	120.1	140.4	137.0	-2.4	18.5
II.	VEGETABLE PRODUCTS	100	81.1	76.8	79.2	80.4	80.8	79.8	77.0	83.1	83.4	83.6	0.2	4.9
07	Vegetables	17.0	108.5	83.2	86.2	92.8	101.0	98.7	97.2	123.1	112.8	102.3	-9.3	3.6
10	Cereals	31.7	76.0	74.9	75.4	75.1	71.8	70.8	68.4	70.2	76.1	77.5	1.8	9.6
11	Milled prods.	51.3	75.2	75.9	79.3	79.5	79.7	79.0	75.6	77.8	78.2	81.2	3.8	2.8
III.	FATS & OILS	100	103.1	95.3	96.4	91.7	86.0	88.1	89.4	80.5	83.1	81.0	-2.5	-8.1
15	Fats & oils	100.0	103.1	95.3	96.4	91.7	86.0	88.1	89.4	80.5	83.1	81.0	-2.5	-8.1
IV.	FOOD & BEVERAGE	100	114.3	117.6	116.0	114.8	96.5	94.5	83.2	90.5	89.2	94.7	6.2	0.2
16	Corned Beef, Canned fish	43.6	87.4	95.7	96.7	96.3	52.8	53.3	70.7	59.1	64.8	71.4	10.1	34.0
17	Sugars	24.0	175.8	180.5	171.9	169.2	171.7	163.5	86.8	139.5	125.9	135.2	7.4	-17.3
19	Cereals	32.4	104.9	100.5	100.7	99.3	99.7	99.0	97.1	96.4	94.9	96.2	1.4	-2.8
V.	MINERAL PRODUCTS	100	163.4	172.2	154.5	166.5	161.4	152.3	170.5	164.0	167.1	165.2	-1.1	8.5
27	Mineral fuels	100	163.4	172.2	154.5	166.5	161.4	152.3	170.5	164.0	167.1	165.2	-1.1	8.5
Total, All groups		500	114.8	115.6	112.5	113.9	110.1	106.8	107.9	109.0	112.3	114.0	1.5	6.7

Source: Samoa Bureau Statistics (Economics Division)

(R) Revised

(P) Provisional figures

Table 2.		IMPORT PRICE INDEX									
		Base: Quarter Q1, 2009 = 100.0									
		Import Price Indexes for Major Component									
		2012				2013				2014	
		Mar 2012	Jun 2012	Sep 2012	Dec 2012	Mar 2013	Jun 2013	Sep 2013	Dec 2013	Mar 2014 ®	Jun 2014(p)
	Weight										
I. ANIMAL PRODUCTS											
02 Meat	100.0										
0204 Sheep	33.7	167.9	167.2	170.1	166.9	181.1	172.5	186.8	188.4	193.0	193.4
0207 Poultry	66.3	81.7	89.4	92.1	92.5	90.7	93.5	91.4	99.6	110.2	125.7
04 Dairy	100.0										
0401 Milk	42.0	120.9	115.5	112.4	115.2	119.7	112.2	108.3	119.0	127.0	124.3
0402 Milk, conc.	17.9	119.9	120.6	118.1	115.9	122.7	122.8	124.8	112.9	147.4	144.2
0405 Butter	24.1	101.3	107.2	94.7	96.0	99.9	98.9	99.2	111.1	156.9	150.5
0407 Eggs	16.0	116.6	128.3	125.9	124.8	136.2	150.2	145.7	144.6	142.9	142.2
II. VEGETABLE PRODUCTS											
07 Vegetables	100.0										
0701 Potatoes	56.5	110.8	98.1	87.4	90.8	94.0	112.9	105.8	108.8	118.0	114.3
0703 Onions	43.5	105.5	63.9	84.6	95.4	110.1	80.2	86.0	141.6	106.0	86.6
10 Cereals	100.0										
1006 Rice	100.0	76.0	74.9	75.4	75.1	71.8	70.8	68.4	70.2	76.1	77.5
11 Milled prods.	100.0										
1101 Wheat	100.0	75.2	75.9	79.3	79.5	79.7	79.0	75.6	77.8	78.2	81.2
III. FATS & OILS											
15 Fats & oils	100.0										
1507 Soya-bean	27.7	100.0	100.0	100.0	100.0	100.0	100.0	100.0	100.0	100.0	100.0
1516 Hydrogenated	36.7	99.6	93.2	97.2	84.6	75.7	75.3	77.0	74.9	86.0	80.1
1517 Margarine	35.7	108.9	93.7	92.8	92.7	92.9	92.1	93.9	71.0	66.9	67.2
IV. FOOD, BEVERAGES & TOBACCO											
16 Meat, fish	100.0										
1602 Corned Beef	31.0	111.3	112.1	112.9	114.3	113.9	124.5	121.1	88.3	87.5	87.9
1604 Canned fish	69.0	76.6	88.3	89.5	88.3	86.8	88.7	90.2	46.0	54.6	63.9
17 Sugars	100.0										
1701 Cane, beet	100.0	175.8	180.5	171.9	169.2	171.7	163.5	86.8	139.5	125.9	135.2
19 Cereals	100.0										
1902 Pasta	56.0	116.1	107.2	107.7	105.8	106.4	105.3	104.7	101.5	99.7	100.5
1905 Bread	44.0	90.6	92.0	91.7	91.1	91.2	90.9	87.4	89.9	88.8	90.7
V. MINERAL PRODUCTS											
27 Mineral fuels	100.0										
2710 Petroleum oils	100.0	163.4	172.2	154.5	166.5	161.4	152.3	170.5	164.0	167.1	165.2

Source: Samoa Bureau Statistics (Economics Division)

® Revised

(P) Provisional figures