



Government of Samoa



# CORPORATE PLAN 2012 - 2016

# FOREWORD

I have great pleasure in presenting the second Corporate Plan for the Samoa Bureau of Statistics for the period 2012 – 2016.

This document was developed following the launching of the Samoa Strategy for the Development of Statistics (SSDS) 2011 – 2021 and it presents the strategic priorities for the Bureau in the four years from 2012 to 2016. It also reaffirms Government's commitment to evidence-based policies and the availability of timely and reliable statistics to monitor progress in all its developments.

The Bureau's vision is for it to be the *leader in providing relevant, quality statistics for the benefit of Samoa*. This will be achieved through its mission which is to: *help users make informed decisions and track progress by providing relevant, quality statistical information and services from a statistical system developed through effective partnerships*.

The Corporate Plan identifies nine core values focusing on the type of leadership, communication and professionalism that are important in the delivery of the five long term goals we've set for ourselves. The guiding principles of safeguarding the confidentiality of information, providing quality, timely and useful statistics and to maintain a robust vital registration service are also vital in the achievement of the Plan.

In the development of this Plan, consultations were held for all levels of the organization highlighting the importance of everyone's contributions as well as their role in the delivery of the Goals we've set for ourselves.

I wish to record my appreciation to the management and staff of Samoa Bureau of Statistics for all your inputs in finalizing this Plan. I am aware that we will face many obstacles in the years ahead but I am also confident that with the dedication that you have shown in the development of this roadmap, we will all find a way to navigate successfully towards its achievement.



Muagututi'a S. Reupena

**GOVERNMENT STATISTICIAN**

# TABLE OF CONTENTS

<b>Foreword.....</b>	<b>2</b>
<b>Abbreviation.....</b>	<b>4</b>
<b>1. Introductions .....</b>	<b>5</b>
<b>2. Mandate.....</b>	<b>6</b>
<b>3. Operating Environment &amp; Assumptions.....</b>	<b>7</b>
<b>4. Vision &amp; Mission Statements.....</b>	<b>10</b>
<b>5. SBS Corporate Values &amp; Principles.....</b>	<b>11</b>
<b>6. Strategic Objectives And Expected Results.....</b>	<b>13</b>
<b>7. SBS Long Term Goals.....</b>	<b>14</b>
<b>8. SBS Long Term Goals &amp; Strategies Matrix.....</b>	<b>15</b>
<b>9. Summary Census &amp; Survey Programme .....</b>	<b>24</b>
<b>10. Organisational Structure .....</b>	<b>25</b>

## Abbreviations

BAS	-	Business Activity Survey
BDM	-	Births Deaths and Marriages
CBS	-	Central Bank of Samoa
GDDS	-	General Data Dissemination System
HIES	-	Household Income and Expenditure Survey
HR	-	Human Resource
IMF	-	International Monetary Fund
IT	-	Information Technology
MOF	-	Ministry of Finance
MOR	-	Ministry of Revenue
PSC	-	Public Service Commission
SAB	-	Statistics Advisory Board
SNPF	-	Samoa National Provident Fund
HOCCCR	-	Health of the Organisation & Climate Change Review
STEP	-	STEP - wise approach to Surveillance

# 1. INTRODUCTION

The 2012 - 2016 Corporate Plan for the Samoa Bureau of Statistics outlines the framework within which the Bureau will be accountable for the delivery of statistical services to its stakeholders in Samoa and externally. This medium term strategy for the Bureau was based on the framework on which the Samoa Strategy for the Development of Statistics (SSDS) 2011 – 2021 was developed and incorporates the long term strategic direction for Statistical services. It also provides the framework within which the annual budgets can be formalized and the individual work plans for all members of staff can be identified and delivered.

*The Corporate Plan is divided into the following sections:*

**Section 2:** briefly outlines the legislative and policy mandate for the Bureau setting the boundaries for the delivery of its services

**Section 3:** discusses the current operating assumptions and the environment for the Bureau and the major domestic and external factors impacting on the environment. This section also includes a SWOT analysis which assists in identifying the critical issues that the Bureau needs to address.

**Section 4:** highlights the Bureau's Vision and Mission

**Section 5:** sets out the corporate values and principles that govern the way in which the Bureau will interact with external agencies/stakeholders and also how it will conduct itself internally

**Section 6:** sets out the Bureau's strategic objectives and expected results.

**Section 7:** sets out the Bureau's goals

**Section 8:** provides the details of the Workplan for the Bureau over the next four years through which it will deliver on its Vision and Mission and support the achievement of the SSDS.

**Section 9:** summarises the key census/surveys to be undertaken by Bureau over the Corporate Plan period

**Section 10:** illustrates the organizational structure of the Bureau.

## **2. MANDATE**

The Samoa Bureau of Statistics derives its mandate from the following:

- The Statistics Act 1971
- Births, Deaths and Marriages Registration Act 2002
- Cabinet Directive ref FK (07)17
- Strategy for the Development of Samoa 2012 – 2016
- Samoa Strategy for the Development of Statistics 2011 – 2021
- PSC Act 2004 & Amendment 2007
- Public Finance Management Act 2001 & Amendment 2005
- Ministry of Finance Procurement Guidelines

### **3. OPERATING ENVIRONMENT & ASSUMPTIONS**

The Samoa Bureau of Statistics continues to operate in a constantly changing, and at the same time, broadening statistical environment. In recent years Samoa has become a signatory to an ever-increasing number of international conventions and agreements.

Almost all of these have both comprehensive and complex reporting requirements requiring an ever-widening range of statistical indicators.

The impacts of the global economic situation, climate change and the patterns of rural-to-urban-to-overseas migration on the economy and environment of Samoa also need to be closely monitored through appropriate statistics.

In order to meet the demands for these statistical indicators the Bureau needs to adapt, develop and expand its statistics capacities and capabilities. The Bureau, as the leader and coordinator of official statistics on Samoa, must work closely with stakeholders to ensure that the required data and indicators can be compiled and published in a reliable and timely manner.

This is the Second Corporate Plan for the Bureau since it was re-established as a separate agency in 2008. The first Corporate Plan covered the period 2008 to 2012 laying the foundation for the Bureau to build its presence as the lead agency for statistics in Samoa. In 2011 the Bureau, with extensive inputs from stakeholders, developed the Samoa Strategy for the Development of Statistics (SSDS) which provides the basis for the development of national statistical coverage, cooperation and capabilities. This was approved by Cabinet in August 2012 and provides the overall framework for the development of statistics in Samoa over the period to 2021.

This Second Corporate Plan for the Bureau builds on the foundation of the first one to deliver the Vision and Mission of the SSDS. It sets out clearly the central role that the Bureau is expected to play in national statistics development.

As with the first CP the Bureau recognises that the achievement of the plan can only be realised with the support of the Bureau staff and all stakeholders. The Bureau therefore aims to continue to provide a conducive working environment that facilitates a high level of staff morale, motivation to work hard and diligently, and to ensure that all of its' staff develop a high level of self-esteem and pride in their work.

In order to better understand the operating environment the Bureau undertook a SWOT (Strengths, Weakness, Opportunities and Threats) analysis to identify a number of critical issues that need to be addressed in the Corporate Plan and work-programme for the Bureau.

<b>SBS: SWOT analysis</b>	
<p><b>strengths</b></p> <ul style="list-style-type: none"> <li>• International recognition of official statistics</li> <li>• SBS has a clear strategy in the SSDS</li> <li>• Statistics Act being updated</li> <li>• Increasing awareness of statistics for sound policies</li> <li>• SBS has sound internal processes with:               <ul style="list-style-type: none"> <li>○ IT systems and e-communications being improved</li> <li>○ New web-site developed and operational</li> </ul> </li> <li>• SBS already recognised as regional leader in statistics</li> <li>• Sound leadership and management direction</li> <li>• Benefiting from Institutional Strengthening Project</li> <li>• Organisation reviewed and new structure to strengthen HR, IT and communications functions approved by PSC</li> </ul>	<p><b>weaknesses</b></p> <ul style="list-style-type: none"> <li>• Legislation update not yet completed</li> <li>• Awareness of statistics still weak in many areas</li> <li>• Divisions of SBS are physically separated</li> <li>• More effort required in implementing the communications /dissemination &amp; outreach strategy</li> <li>• Staff need more training in technical areas, including IT &amp; programming</li> <li>• Communications between divisions sometimes weak and need improvement</li> <li>• SBS capabilities to implement the strategy need further support:               <ul style="list-style-type: none"> <li>○ Assets, equipment &amp; people</li> <li>○ Experience, knowledge, data</li> <li>○ Budget resources</li> <li>○ Need better back-up for data, (and especially for BDM)</li> <li>○ Need better storage for records/archives, (and especially for BDM)</li> </ul> </li> <li>• Lack of promotion opportunities &amp; high level of staff turnover</li> <li>• Need stronger links with external stakeholders/ data providers</li> <li>• External events (personal &amp; public) distract staff; effects on core activities</li> <li>• Weaknesses identified in Health of Organisation and Climate Change Review to be addressed               <ul style="list-style-type: none"> <li>○ Morale, commitment, leadership</li> <li>○ Processes and systems, etc</li> <li>○ Management performance</li> </ul> </li> </ul>



**Opportunities**

- SSDS provides sound base for securing external funding for survey/census programmes
- De-merger of SBS from MoF strengthened statistics profile
- Technology development and innovation in IT and internet/web-site, especially to computerise all BDM records & archives
- Build stronger partnerships with stakeholders (users/providers of statistics)
- Develop new statistical indicators and updated data series for sectors
- Increasing demand for statistical services to support policy development and decision-making
- Access to global best practice
- Establish functioning SAB
- Samoa has joined the GDDS family, thus improved international recognition
- Secure external funding for future survey programme
- Staff attachments to other statistics offices

**Threats**

- Budget allocations and external funding are not sustainable
  - Unable to get budget funding for new appointments in HR, IT & communications
  - Unable to get external funding for survey programme
- Staff turnover and/or loss of key staff
- Political interference in publication of statistics
- Unable to get required office space for Savaii or to bring all divisions together
- Stakeholders do not comply with requests for data
- Unable to get approval for new legislation
- Unable to keep pace with IT developments
  - Web-site not updated
  - New IT equipment & replacements not available
  - BDM IT system fails
- Stakeholders unwilling or unable to cooperate in providing reliable administrative data & information to SBS on timely/regular basis

## **4. VISION AND MISSION STATEMENTS FOR SBS**

### **VISION**

**Samoa Bureau of Statistics to be the leader in providing relevant, quality statistics for the benefit of Samoa.**

### **MISSION**

**Help users make informed decisions and track progress by providing relevant, quality statistical information and services from a statistical system developed through effective partnerships**

## 5. SBS CORPORATE VALUES & PRINCIPLES

The Bureau's corporate values and the general behavioural principles under which staff in the Bureau will carry out their business, provide the basis for the Bureau to achieve its Vision, Mission and Goals and to provide all stakeholders, internal and external with the statistics on Samoa that they need to ensure the national development goals are met.

### OUR VALUES

#### *Leadership*

- ▶ We lead by example in statistics quality, development and dissemination.
- ▶ We promote and use best practice approaches.
- ▶ We are accountable and transparent in all we do.

#### *Communication*

- ▶ We are focused on being clear, meaningful and relevant in all communication with our stakeholders
- ▶ We ensure we understand our audience and tailor our communication to meet their needs.

#### *Professionalism*

- ▶ We are committed to quality and competence in all that we do
- ▶ We maintain a commitment to honesty and fairness in dealing with the public and stakeholders
- ▶ We ensure respect and courtesy in treatment of clients and employees
- ▶ We strive to create an environment where all staff are valued and challenged.

### OUR PRINCIPLES:

#### ***To protect private information the Bureau will:***

- ▶ Ensure confidentiality and security of information
- ▶ Ensure integrity of transactions and records

#### ***To provide quality, timely and useful statistics the Bureau will:***

- ▶ Use international best practice in setting statistical standards and operating processes.
- ▶ Be innovative, adopting new technology and ideas to continue to improve the statistics
- ▶ Maintain the timeliness of statistical information and its dissemination, ensuring that the Bureau web-site is updated with the latest statistics available
- ▶ Be responsive to requests for additional data and analysis within the confidentiality boundaries

**To maintain a robust vital registration service the Bureau will:**

- ▶ Ensure that the vital registration service is available to citizens of Samoa and others who may have cause to use it
- ▶ Operate a service that is trusted by all stakeholders

## **6. STRATEGIC OBJECTIVES AND EXPECTED RESULTS**

The Bureau expects to lead the establishment of an Official Statistics System that will:

- ▶ Better provide the information needed to develop and monitor policies for Samoa
- ▶ Better provide information to meet national, regional and international commitments
- ▶ Increase the timely availability, quality, coverage, transparency and usefulness of statistics on Samoa and its people
- ▶ Increase user satisfaction
- ▶ Increase the skills and efficiency of those working in statistics

## 7. SBS LONG TERM GOALS

The SSDS identifies Five Long-term Goals for the development of statistics in Samoa. Under its various Mandates the Bureau is expected to be the leader and coordinator of all statistical activities.

The Bureau Corporate Plan is therefore aligned to supporting the achievement of these Five Goals.

**Goal 1: Relevant, timely and accessible economic statistics:** To provide the necessary information to assist in ensuring sound macro-economic performance and management of the Samoa economy.

**Goal 2: Comprehensive, timely and reliable population and demographic statistics:** To provide the necessary information so that population and related policies can be formulated and monitored.

**Goal 3: Relevant, timely, reliable and accessible social & sector statistics:** To provide the information needed to support sector development plans and related socio-economic policy objectives including MDGs, poverty and environment issues.

**Goal 4: Provide a sound & secure vital statistics registration service for the people of Samoa and to support our international relations:** Ensure full compliance with the BDM legislation

**Goal 5: Ensure the strategic factors that enable the delivery of the statistical goals are in place:** Ensure the Existence of a sound Statistics environment; coordination, communication and dissemination; statistics infrastructure financial, human resources & IT systems.

**The Bureau's strategies, activities and indicators under each of these Goals are highlighted in the following Matrix.**

## 8. SBS LONG TERM GOALS & STRATEGIES MATRIX

**Goal 1: Relevant, timely and accessible economic statistics: To provide the necessary information to assist in ensuring sound macro-economic performance and management of the Samoa economy.**

Leaders: Finance Statistics and Economic Statistics Divisions

OUTPUT	STRATEGY	PERFORMANCE INDICATOR	RESPONSIBLE	TIMING
<b>Compile National Accounts Statistics</b>	<ul style="list-style-type: none"> <li>i. Frequent update of benchmarks using the latest survey results from BAS, HIES, Population Census, Agriculture Survey etc.</li> <li>ii. Improve working relationship and encourage partnership with data providers, MOR, SNPF, CBS and other stakeholders</li> <li>iii. Continue dialogue and peer review with international experts; IMF experts and specialist consultants</li> <li>iv. Timely provision of Balance of Payments data, in compliance with the BPM6 version</li> </ul>	<p>Quarterly and annual GDP estimates - Production &amp; Expenditure approaches compiled and disseminated</p> <p>Quarterly and annual experimental estimates of GNI, GNDI, Savings, Investment and Net Lending</p>	Finance Statistics Division	Quarterly and Annual
<b>Compile Industrial Production Index</b>	<ul style="list-style-type: none"> <li>i. Conduct monthly industrial production survey</li> </ul>	Compile and disseminate monthly, quarterly and annual Industrial Production Index.	Finance Statistics Division	Monthly
<b>Compile Government Finance Statistics</b>	<ul style="list-style-type: none"> <li>i. Improve access to the Finance One System</li> <li>ii. Improve efficiency and effectiveness of transaction processing to include grant and loan funded development projects</li> <li>iii. Harmonize classifications used throughout the General Government Sector</li> </ul>	Quarterly and annual Fiscal Accounts for Government.	Finance Statistics Division	Quarterly
<b>Compile Debt Statistics</b>	<ul style="list-style-type: none"> <li>i. Build Capacity within the Finance Statistics Division</li> <li>ii. Work in collaboration with the Ministry of Finance and Central Bank of Samoa</li> </ul>	Compile quarterly and annual debt statistics	Finance Statistics Division	Quarterly
<b>Compile Formal</b>	<ul style="list-style-type: none"> <li>i. Improve co-ordination and collaboration with</li> </ul>	Quarterly and annual employment statistics	Finance Statistics	Quarterly

<b>Employment statistics</b>	the Samoa National Provident Fund ii. Frequent update and review of the business registration system	(formal sector)	Division	
<b>Conduct Business Activity Survey</b>	i. Compile a central Business Register ii. Build close co-operation amongst stakeholders	A printed report containing descriptive information of the survey design, data tables, and analysis of the results	Finance Statistics Division	2016
<b>Trade Statistics</b>	Work with & support Customs to improve the quality of trade data <ul style="list-style-type: none"> <li>• Enable electronic data transfer from Customs</li> <li>• Review Trade Price and Volume indexes</li> <li>• Extend coverage of Import Price Index</li> <li>• Release Quarterly Merchandise Trade Report</li> <li>• Develop Export Price Index</li> </ul> Complete update of PC Trade System in consultation with Stats NZ	Publish monthly merchandise trade data  Publish Quarterly Merchandise Trade Report  Publish Quarterly Import & Export Price Index	Economics Statistics Division Economics Statistics Division Economics Statistics Division	Monthly  Quarterly  Quarterly
<b>Price &amp; Volume</b>	Improve the quality and coverage of price statistics, including: <ul style="list-style-type: none"> <li>• Using results from 2013 HIES to rebase CPI</li> <li>• Review/ Rebase Local Market Survey</li> </ul> Participate in the International Comparisons Program	Publish and release monthly CPI report Rebase CPI Publish Local Market Survey Report Collect & compile quarterly ICP data	Economics Statistics Division	Monthly 2014 Monthly Quarterly
<p><b>Goal 2: Comprehensive, timely and reliable population and demographic statistics:</b>  <i>To provide the necessary information so that population, demographic and related policies can be formulated and monitored</i>  Leaders: Census &amp; Surveys and Social Statistics Divisions</p>				
<b>Migration Statistics</b>	Ensure secure & timely collection, checking and processing of arrival and	Monthly, quarterly and annual migration statistics published	Social Statistics Division	Monthly



	<p>departure cards</p> <p>Reconcile with BMS</p> <p>Improve timeliness of processes by introducing appropriate new technology</p>			<p>Quarterly</p> <p>Annual</p>
<b>Population &amp; Demographic statistics</b>	<p>Produce &amp; disseminate quarterly population estimates</p>	<p>Population projections updated regularly</p>	<p>Census &amp; Surveys Division</p>	<p>Quarterly/Annually/5-yearly</p>
<b>Census and Survey Design and Quality Management</b>	<p>Conduct relevant training and workshops</p> <p>Apply United Nations Framework on Management of Population and Housing Census and Sampling</p> <p>Adopt Standard Classifications and Concepts like ISIC and ISCO</p> <p>Attend relevant training and workshops to improve capacity</p>	<p>Improved Questionnaire design</p> <p>Standard Classifications and Concepts used</p> <p>Improved Manuals for :</p> <ul style="list-style-type: none"> <li>• Enumerators</li> <li>• Supervisors</li> <li>• Coders and Editors</li> <li>• Office Managers</li> </ul>	<p>Census, Surveys and Demography</p>	<p>On-going</p>
<b>Population and Housing Census 2011</b>	<p>Conduct Census of Population and Housing</p> <p>Produce Population Profile and Projections</p> <p>Produce Gender Monograph</p> <p>Produce Youth Monograph</p>	<p>Census Analytical report</p> <p>Tabulation Report</p> <p>Population Profile</p> <p>Projection Report</p> <p>Gender Monograph Report</p> <p>Youth Monograph Report</p>	<p>Census &amp; Survey Division</p>	<p>2011-2012</p> <p>2013-2014</p> <p>2013-2014</p> <p>2013-2014</p>
<b>Sampling Methodologies and Procedures</b>	<p>Conduct relevant training and workshops</p> <p>Acquire relevant sampling software</p> <p>Attend relevant training and workshops to improve capacity</p>	<p>Improved sampling methods and tools to select household samples</p>	<p>Census, Surveys and Demography</p>	<p>On-going</p>
<b>Geographic Information Systems</b>	<p>Conduct relevant training and workshops</p>	<p>Population Atlas based on census 2011</p>	<p>Census, Surveys and Demography</p>	<p>2013-2014</p>

	<p>Acquire relevant GIS equipments and software</p> <p>Attend relevant trainings and workshops to improve capacity</p>	<p>Generated Maps of population indicators based on SBS census and surveys</p> <p>Generated Maps based on <b>stakeholders data</b> like disaster data, environment and natural resources data, community data, <b>by working in partnership with MNRE, MWCSO, SWA, EPC, LTA, MWTI, MESC, MOH, MAFF, MOF, etc</b></p> <p>Availability of EA maps to support national surveys by SBS, stakeholders, NGOs and international organizations</p>		On-going
<b>Publicity and dissemination of population data</b>	<p>Conduct data workshops with planners and policy-makers on emerging issues</p> <p>Conduct data workshops with the community and stakeholders</p> <p>Disseminate population indicators to media outlets</p> <p>Attend relevant trainings and workshops to improve capacity</p>	<p>Improved public awareness of SBS activities</p> <p>Improved working relationships with planners, community, stakeholders and the media</p> <p>Increased demands for statistical services by users</p>	Census, Surveys and Demography	On-going
<p><b>Demographic Health Survey</b></p> <p><b>Domestic Violence Survey</b></p> <p><b>Disability Survey</b></p> <p><b>Ad Hoc Survey</b></p>	<p>Conduct fieldwork</p> <p>Produce Analytical Reports</p>	<p>DHS Analytical Report</p> <p>Domestic Violence Analytical Report</p> <p>Disability Survey Report</p> <p>Ad hoc Survey Report</p>	Census, Surveys and Demography,	<p>2014</p> <p>2015-2016</p>

<b>PDA and Scanning innovation</b>	Work with Data processing Unit in using the system and devices	Sample Surveys and Census Report	Census, Surveys and Demography, IT and Data processing Unit	On going
<b>List of Households in Census Enumeration Areas(EA)</b>	Conduct update of EA Household Listing for census 2016	Updated List of Households in EA	Census, Surveys and Demography	2015-2016
<b>List of Maps of Census Enumeration Areas</b>	Conduct update of EA Maps for census 2016	Updated Maps of EA	Census, Surveys and Demography	2015-2016
<b>Population and Housing Census 2016</b>	Conduct Census of Population and Housing 2016	Completed Census Data Collection	Census, Surveys and Demography	November, 2016
<b>Goal 3: Relevant, timely, accessible and reliable social &amp; sector statistics: To provide the information needed to support sector development plans and related socio-economic policy objectives including MDGs, poverty and environment issues.</b>				
Leaders: Social Statistics, Census and Survey and Economic Statistics Divisions				
<b>OUTPUT</b>	<b>STRATEGY</b>	<b>PERFORMANCE INDICATOR</b>	<b>RESPONSIBLE</b>	<b>TIMING</b>
<b>Statistical Abstract</b>	Coordinate & finalise compilation	Agreements for data supply in place Abstract published on time	Social Statistics	Web version updated regularly as soon as new information is supplied Biennial paper publication
<b>Infrastructure Statistics</b>	Strengthen coordination & cooperation with stakeholders & data providers (MWTI, SWA, EPC, MCIT, LTA)	Quarterly and Annual report on Energy Quarterly and annual report on water supply Quarterly and Annual report on Building information	Social Statistics Economic Statistics	Biennial/Annual
<b>Transport Statistics</b>	Work in collaboration with the Land Transport Authority  Work in collaboration with the Ministry of Revenue, Samoa Ports Authority and Shipping Agents	Compile quarterly and annual registered vehicles statistics  Publish and Release 6 monthly and annual Shipping Report	Finance Statistics Division  <i>Economics Statistics Division</i>	Quarterly  <i>Half yearly and annual</i>
<b>Labour statistics</b>	Conduct labour force survey  Conduct School to Work Transition Survey	Production of labour force statistics report  Production of School to Work Transition Report	Social Statistics	2013

<b>Education statistics</b>	Strengthen coordination & cooperation with stakeholders & data providers (MESC)	Agreement with administrative data providers on data to be provided and published in abstract. Census data published	Social Statistics	2014
<b>Health statistics</b>	Strengthen coordination & cooperation with stakeholders & data providers (MoH, NHS, MWSCD)	Agreement with administrative data providers on data to be provided and published in Abstract. Census data published	Social Statistics	Annual updates and published in Abstract
<b>Judicial statistics</b>	Strengthen coordination & cooperation with stakeholders & data providers (P&P, LTA, MJCA)	Agreement with administrative data providers on data to be provided and published in abstract.	Social Statistics	Annual updates and published in Abstract
<b>Poverty &amp; hardship</b>	Conduct HIES and compile statistics on hardship & poverty	Poverty & hardship indicators Nutrition indicators Vulnerability & social protection indicators Household characteristics indicators	Social Statistics & Economic Statistics Divisions	2013/2014
<b>Environmental Statistics</b>	Strengthen coordination and cooperation with stakeholders and data providers (MNRE, Meteorology Division)	Agreement with administrative data providers on data to be provided and published in abstract	Social Statistics Division	2014 annual updates
<b>Agriculture &amp; Fishing</b>	Work with the Ministry of Agriculture and Fisheries to: <ul style="list-style-type: none"> <li>Develop and expand use of both Agriculture and Fisheries Statistics to meet needs of sector plans</li> <li>Re-introduce regular Agriculture surveys</li> </ul>	Agriculture census and survey conducted, data analysed and reports published  Data on subsistence agriculture/fishing published from HIES	Economic Statistics Division	Agriculture Survey 2015

	<ul style="list-style-type: none"> <li>Food security index in consultation with appropriate stakeholders</li> </ul>			
<b>Tourism Statistics</b>	Strengthen cooperation & coordination with stakeholders	Production of monthly visitor statistics and reports  Tourism surveys supported	Social Statistics	Monthly/Quarterly/Annual  2 Yearly
<b>Goal 4: Provide a sound &amp; secure vital statistics registration service for the people of Samoa and to support our international relations: Ensure full compliance with the BDM legislation</b> Leader: Births, Deaths and Marriages Division				
<b>OUTPUT</b>	<b>STRATEGY</b>	<b>PERFORMANCE INDICATOR</b>	<b>RESPONSIBLE</b>	<b>TIMING</b>
<b>Vital registration; Births, Deaths &amp; Marriages</b>	Provide a sound and secure vital registration service of the people of Samoa  SBS to work with the MOH and NHS as appropriate, to upgrade the BDM IT system, data collection, processing, archiving and analysis to improve coverage, timeliness and delivery of registration and vital statistics  Ensure that all stakeholders familiar with requirements for registrations of vital statistics	Develop and Implement BDM service standards  BDM IT system fully updated and back-up daily  Proportion of births, deaths and marriages properly registered improves  Tabulation of births, deaths and marriages published  Monthly advocacy program	BDM Division	Ongoing  System upgrade completed in 2013  Annually  Monthly
<b>Goal 5: Ensuring that the strategic factors that enable the delivery of the statistical goals are in place: Statistics environment, coordination, communication and dissemination; statistics infrastructure; financial resources, human resources &amp; IT systems</b> Leaders: Corporate Service Division & ICT/Data Processing Division				
<b>OUTPUT</b>	<b>STRATEGY</b>	<b>PERFORMANCE INDICATOR</b>	<b>RESPONSIBLE</b>	<b>TIMING</b>
<b>Human Resource and Management Development</b>	Implementation of Human Resource Management and	Monthly trainings conducted; covering	CSSD	Monthly

	Development functions  Implementation of performance appraisal system	induction, technical and overseas experience Annual appraisal of staff performance system	CSSD and all Divisions	Annually
<b>Revised &amp; updated Statistics Act</b>	Bill passed by parliament. Enforce the legislation	New Act in place SAB established and functioning	CSSD & all Divisions	2014
<b>Revise and Update BDM Act</b>		New BDM Act enacted	BDM	2014/15
<b>Access to relevant and reliable statistics</b>	Develop a central database system for the bureau  Statistics Clearing House developed  Implement dissemination policy/strategy  Maintain public awareness of statistics through regular public briefings	Centralise database operational and accessible to all staff Statistical Clearing House established and operational Web-master/ Dissemination Officer appointed Increasing number of visitors to web-site	ICT & DPS Division All Divisions as necessary   ICT & DPS Division	2013/14  2013  Ongoing, public briefings at least once per quarter as new statistics are published
<b>Data processing &amp; IT services</b>	Develop computer system to process data for census and surveys Maintain computer system to process migration data  Provide IT support to all other divisions  Maintain and update web-site	Prepare final data for public use  Produce final tables as outlined in tabulation plans for census and surveys Produce monthly, quarterly, and annual tables for migration data  IT services are efficient	ICT & DPS Division	As required by census & survey schedule  Ongoing, data published within one month  2013  Monthly

	<p>Manage BDM main networks</p> <p>Manage SBS main network</p>	<p>and support all other activities in the Bureau</p> <p>All reports placed on Website on day of delivery</p> <p>Monthly report on number of system error logged</p> <p>Daily backup log maintain</p> <p>Secure offsite backup operational</p>		<p>Ongoing</p> <p>Ongoing</p>
<b>Efficient &amp; effective management of Bureau</b>	Develop and implement process for staff reporting of views on service delivery	<p>Monthly report on feedback from staff</p> <p>HOCCR results improve</p>	CSSD	2014/15
<b>Effective Financial Management</b>	Full compliance with PFMA Act & Treasury Instructions	<p>Monthly Expenditure Reports delivered to Output Managers</p>	CSSD	Monthly
<b>Efficient Records Management</b>	Ensure all inwards/outwards communications are centralized	Daily	CSSD	On-going
	Prepare communications Report	Monthly communications report for management	CSSD	Monthly

## 9. OUTLINE CENSUS/SURVEY PROGRAMME 2012 TO 2016

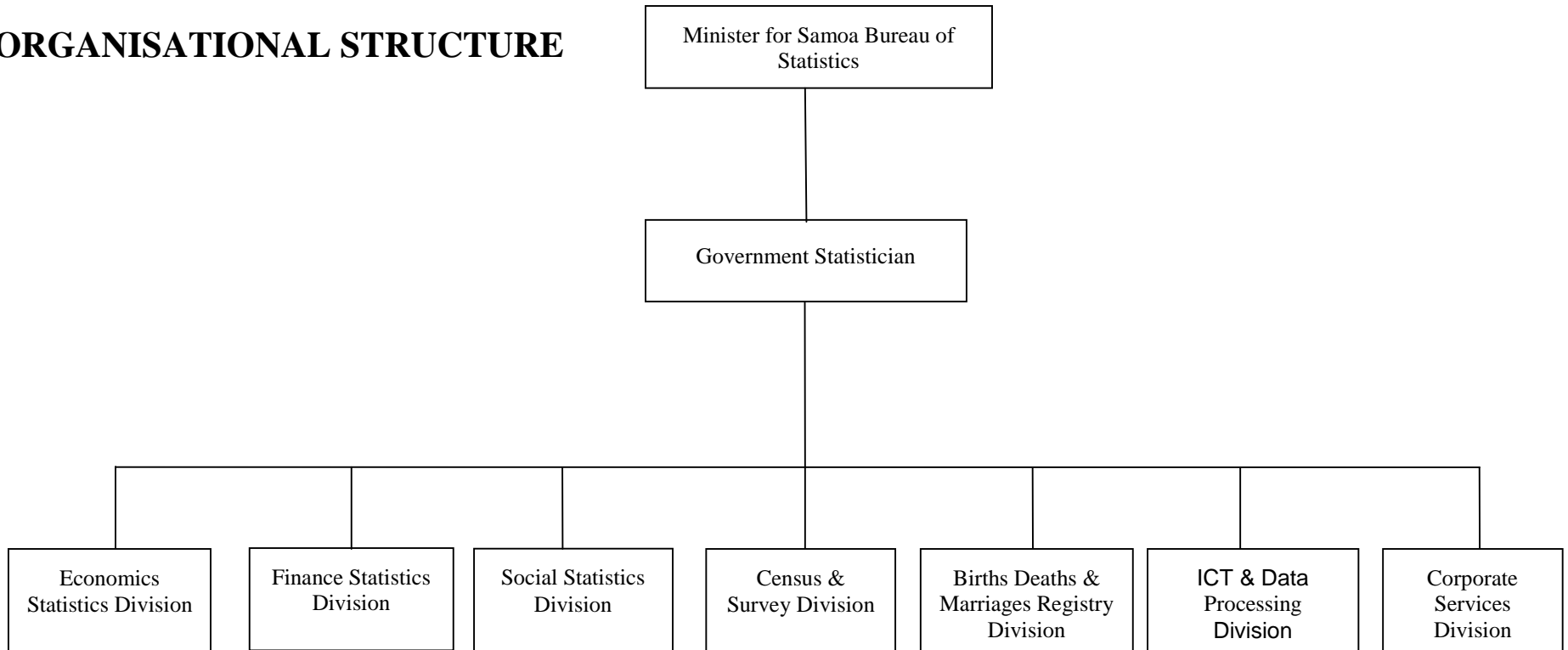
Year	Collections	Comments
2012	Tourism Expenditure Survey	Two-yearly initially
2012	Census of Livestock	Ad-hoc
2012	Fruit & vegetable survey	Ad-hoc
2012	Labour Force Survey	Ad-hoc
2012	School to Work Transition Survey	Ad-hoc
2013	Household Income and Expenditure Survey	5 yearly cycle
2013	STEPS	5 yearly cycle
2013	Police	Ad-hoc
2013	Energy efficiency	Ad-hoc
2014	Demographic Health Survey	5 yearly cycle
2014	Agriculture Survey	2015
2014	Tourism Expenditure Survey	2 yearly initially
2015	Labour, Education and Skills Survey	5 yearly cycle
2016	Census of Population and Dwellings	5 yearly cycle
2016	Tourism Expenditure Survey	3 yearly cycle
2016	Business Activity Survey	3 yearly cycle

Note: other priority ad-hoc surveys may also be carried out as and when resources allow



# 10. ORGANISATION STRUCTURE

## ORGANISATIONAL STRUCTURE





Malo o Samoa



# FUAFUAGA AUTASI 2012 - 2016

# UPU TOMUA

Ou te fiafia lava e folasia le Fuafuaga Autasi lona lua a le Ofisa o Fuainumera Faamauina mo le tausaga 2012 - 2016.

O lenei Fuafuaga Autasi sa tapenaina ina ua maea faalauiloa le Taiala mo le Atinae o Fuainumera Faamauina 2011 - 2021 ma e aofia ai sini autu mo le Ofisa o Fuainumera mo le fa tausaga mai le 2012 i le 2016. E toe faatumauina ai foi le faatauaina e le malo i le fausia o ana faiga faavae o le faaaogaina o faamaoniga faatasi ai foi ma le faalauiloina faalauaitetele o fuainumera pito i sili ona faatuatuaina i se taimi talafeagai e faaoga e fua iai le faagasologa o galuega faatino ma le atinae foi osi o tatou atunuu.

O le Vaaiga Taulai a le Ofisa o Fuainumera Faamauina o le avea lea o ia ma ***taitai i le tuuina atu o fuainumera aloaia sao ma faatuatuaina mo le manuia o Samoa.*** O le a mafai ona ausia lea e ala i lana Faatautaiga lea e faatauaina ai le ***fesoasoani i e latou te faaaogaina fuainumera i le faia oni faaiuga lelei talafeagai ma fuaina le taunuuga o galuega faatino e ala i le tuuina atu o fuainumera ma isi auaunaga aloaia e manaomia ma faatuatuaina e maua mai se auala lelei na fausia e ala i le galulue felagolagomai ma ana paaga uma i galuega tau Fuainumera Faamauina.***

O lo o faamanino mai i le Fuafuaga Autasi Aga Tausili e iva e agai tonu i le ituaiga taitai, fesootaiga ma le ituaiga faatinoga o le galuega lea e taua tele i le faatinoina o sini autu e lima lea ua fuafua mo le Ofisa. O le aga tausili pito i taua lava o le puipuia lelei o faamatalaga agatapuia, tuuina atu o fuainumera faamauina atoatoa ma aoga i taimi talafeagai ma ia lava tapena lelei le auala e faatino ai le resitalaina o vaega taua o le soifuaga o le tagata o lo o faamamafa foi i le ausia o le Fuafuaga faataatia

I le fausiaina o lenei Fuafuaga Autasi, sa faia ai ni faatalanoaga ma le afaigaluega a le Ofisa i ona vaega eseese uma ma ua avea lea ose pine faamau o le faatauaina o le sao o le afaigaluega uma aemaise ai foi o le faatinoina o latou pitolaau i le ausia o le Fuafuaga.

E fia faamauina foi lau faafetai faapitoa i le pulega faapea foi le loaloa o le afaigaluega a le Ofisa mo le latou sao taua i le fausia o lei Fuafuaga Autasi. E iai luitai o le a tatou fetai ai ao faagasolo la tatou galuega ae ou te talitonu i la outou lagolagosua ma le galulue punouai lea foi sa faaalua i le fausia o lenei alafua, o le a mafai ai ona tatou ausia le taunuuga o galuega ua tatou faatulagaina.



Muagututi'a S. Reupena

**FAAMAU FUAINUMERA A LE MALO**

## FAASOLOGA O MATAUPU

Upu Tomua.....	2
Faamatalaina o Upu Ootoo.....	4
1. Faatomuaga .....	5
2. Malosiaga faa-le-tulafono.....	6
3. Siosiomaga tau le Galuega ma Manatu Tauave.....	7
4. Vaaiga Taulai ma Faatautaiga.....	11
5. Aga Tausili ma Amio Tatau.....	12
6. Sini Autu ma Taunuuga Manaomia.....	14
7. Sini Autu Alualu Mamao a le Ofisa.....	15
8. Sini Autu a le Ofisa ma le Faatulagana o le Faatinoina .....	16
9. Oootoga o Tusigaigoa ma Suesuega e faatinoina .....	27
10. Auivi o le Faatulagana o le Ofisa .....	28

# Faamatalaga o Upu

BAS	-	Business Activity Survey
BDM	-	Births Deaths and Marriages
CBS	-	Central Bank of Samoa
GDDS	-	General Data Dissemination System
HIES	-	Household Income and Expenditure Survey
HR	-	Human Resource
IMF	-	International Monetary Fund
IT	-	Information Technology
MOF	-	Ministry of Finance
MOR	-	Ministry of Revenue
PSC	-	Public Service Commission
SAB	-	Statistics Advisory Board
SNPF	-	Samoa National Provident Fund
HOCCR	-	Heath of the Organisation & Climate Change Review
STEP	-	STEP - wise approach to Surveillance

# 1. FAATOMUAGA

O le Fuafuaga Autasi 2012 - 2016 mo le Ofisa o Fuainumera Faamauina o lo o auiliili ai le faavae o le a limataitaiina ai le faatinoina o le auaunaga a le Ofisa ma tali atu ai i manaoga oi latou uma e faaaogaina fuainumera faamauina e le gata i le lotoifale o le tatou atunuu ae faapea foi i atunuu i fafo. O lenei fuafuaga mo le Ofisa sa fuafua mai e faaoga ai le faavae sa fausia ai le Taiala mo le Atinaeina o Fuainumera Faamauina 2011 - 2021 lea sa tapena ma aofia ai sini autu alu alu mamao mo le faatinoina o tautua mo Fuainumra Faamauina

O lo o aofia ai foi le faavae o le a faatino ai le tuufaatasia o tala o le tupe faale tausaga ma fuafuaga a le afaigaluega taitoatasi mo le faatinoina o latou tiute.

***O lo o vaevaeina le Fuafuaga Autasi i vaega nei:***

***Vaega 2:*** Otootoga o vaega faa le tulafono ma faiga faavae mo le Ofisa o Fuainumera Faamauina e faatino ai le tuuina atu o ana auaunaga.

***Vaega 3:*** Faamatala ai manatu tauave i le tulaga o iai nei le faatinoga o auaunaga ma le siosiomaga o lo o faatino ai le tuuina atu o tautua aemaise ai foi o mea tutupu i totonu ma fafo atu o le tatou atunuu e aafia ai le siosiomaga o lo o faatino ai le tautua a le Ofisa o Fuainumera Faamauina. O le vaega foi lenei e faamatala auiliili ai malosiaga, faaletonu, avanoa lelei ma toatuga o lo o fesoasoani lea i le mauaina o vaega faigata e tatau ona faia iai se galuega a le Ofisa.

***Vaega 4:*** Faailoa manino ai le Vaaiga Taulai a le Ofisa ma lona Faatautaiga.

***Vaega 5:*** o lo o faailoa manino ai aga tausili o le a faatino ai le tuuina atu o le tautua a le Ofisa faatasi ai ma ana fesoataiga ma ana paaga i fafo atu o lona siosiomaga faatasi ai foi ma le faiga o le a faatino ai ana galuega i lona lotoifale.

***Vaega 6:*** O lo o tuuina atu ai Sini Autu e tatau ona faatinoina e le Ofisa faatasi ai foi ma ona taunuuga manaomia

***Vaega 7:*** O lo o tuuina atu ai Sini Autu o lo o taulai iai le taunuuga o Auaunaga a le Ofisa

***Section 8:*** O lo o auiliili atu ai vaega eseese o le faataatiaga o galuega faatino a le Ofisa mo le isi fa tausaga lea o le a faatino ai le mafai ona ausia o lana Vaaiga Taulai ma lona Faatautaiga lea e lagolago ai i le ausia o le Taiala mo le Atinae o Fuainumera Faamauina.

***Vaega 9:*** O lo o otooto atu ai le Polokalame o Tusigaigoa ma Suesuega Laiti e faatinoina e le Ofisa i le taimi fuafua mo lenei Fuafuaga Autasi.

***Vaega 10:*** Tuuina atu ai le Auivi o le Faatulagana o le Ofisa o Fuainumera Faamauina.

## 2. MALOSIAGA FAALE-TULAFONO

O le malosiaga faale-tulafono a le Ofisa o Fuainumera Faamauina e maua mai i tulafono ma Taiala e aofia ai:

- Tulafono mo Fuainumera Faamauina 1971
- Tulafono mo le Resitalaina o e Fananau, Maliliu ma Faaipoipoga 2002
- Faaiuga a le Kapeneta FK (07)17
- Taiala mo le Atinae o Samoa 2012 – 2016
- Taiala mo le Atinae o Fuainumera Faamauina 2011 – 2021
- Tulafono mo le Pulea o le Aufaigaluega a le Malo 2004 ma ona Teuteuga 2007
- Tulafono o le Pulega o Tupe a le Malo 2001 ma ona Teuteuga 2005
- Taiala a le Ofisa o Tupe mo le Faatauina o Aseta ma Tautua.

### **3. SIOSIOMAGA TAU LE GALUEGA MA MANATU TAUAVE**

O le Ofisa o Fuainumera Faamauina o lo o faaauau pea ona faatino lana tautua i se siosiomaga o lo o fesui'ai pea ma faapea ai foi ona faalatele atu ai le siosiomaga tau fuainumera faamauina. I tausaga ua mavae, sa avea ai Samoa o se tasi o atunuu ua faamaonia le tele o Maliega ma Feutagaina faava-o-malo lea e faatupulaia pea lona faitauaofai. O le tele lava foi o nei Maliega ma Feutagaina e iai le manaoga e tuuina atu ai ripoti lea e manaomia ai le faatupulaia o fua faatatau faafuainumera faamauina.

O le aafiaga o fesui'aiga i le tamao'aiga o le lalolagi, fesui'aiga i le tau ma le fesiitai o femalagaiga mai nuu i tua i le taulaga ma atunuu mamao i le tamao'aiga ma le siosiomaga o Samoa e tatau foi ona mataituina lelei e ala i fuainumera faamauina talafeagai.

Ina ia mafai ona tali atu i nei manaoga, e manaomia lava le mafai e le Ofisa ona fetuunai, fausia ma faalateleina tomai ma agavaa ina ia faamalieleina ai vaega uma e manaomia. O le Ofisa o Fuainumera Faamauina lea e taulamua i le tuufaatasia o fuainumera faamauina taualoa i Samoa, e matuai tatau ma onomea ai foi lona galue soosoo tauau ma ana paaga uma e faamautinoa o faamatalaga tau fuainumera uma ma faailoilo e manaomia e mafai ona tuufaatasia ma faalauiloa i se tulaga taualoa ma ia faia ise taimi talafeagai.

O le Fuafuaga Autasi lona Lua lenei mo le Ofisa o Fuainumera Faamauina talu mai ona toe faatuina ose Ofisa Tu-toatasi a le Malo i le 2008. O le Fuafuaga Autasi Muamua lea sa fai mo le fa tausaga mai le 2008 i le 2012 sa fausia ai le faavae mo le Ofisa ina ia faamalosia ai lona sao i le atunuu ose Ofisa e taitaia le tuufaatasia o Fuainumera Faamauina i Samoa. Sa mafai e le Ofisa o Fuainumera i le 2011, faatasi ai ma le fesoasoani tele a ana paaga uma ona fausia le Taiala mo le Atinaeina o Fuainumera Faamauina i Samoa lea e faailoa manino ai le faiga, fesoootaiga, tomai ma isi vaega uma e tatau ona aofia ai i le atinaeina o Fuainumera Faamauina i le atunuu. O lea taiala na faamaonia e le Kapeneta ia Aukuso 2012 ma tuuina mai ai le auivi i lona tulaga aoao tetele mo le Atinaeina o Fuainumera Faamauina i Samoa mo le piriota e oo atu i le 2021.

O le Fuafuaga Autasi lona lua a le Ofisa e toe faamalosia ai le faavae o le Fuafuaga Autasi muamua ina ia mafai ona ausia le Vaaiga Taulai ma le Faatinoina o le Taiala mo le Atinaeina o Fuainumera Faamauina. O lo o faamatala auiliili ai foi tiute taua o le Ofisa o Fuainumera Faamauina lea e tatau ona faatinoina mo le atinaeina o fuainumera faamauina i lo tatou atunuu.



E pei lava foi ona mautinoa i le Fuafuaga Autasi muamua, e faatoa mafai ona ausia alafua o le Fuafuaga ua faataatia, pe a galulue faatasi le afaigaluega ma ana paaga. O le naunautaiga la o le Ofisa o le a faaauau ai pea ona tuuina atu le siosiomaga e pito i sili ona faamalieina ai le afaigaluega ma mafai ai foi ona fesoasoani i le afaigaluega e tinou ai ma filiga e galulue punouai ma le malosi, ma ia faamautinoa ai foi e mafai e le afaigaluega ona faatupuina lo latou fiafia ma mafai ona faatinoina o latou tiute i le maualuga e gata ai.

Ina ia mafai ona manino atili le siosiomaga o lo o faatino ai le auunaga a le Ofisa, sa faatinoina le suesuega i ona malosiaga, faaletonu, avanoa lelei ma toatuga ina ia mafai ai foi ona mautinoa vaega ogaoga lea e tatau ona ave i ai le faamuamua mo le faainoina i le Fuafuaga Autasi atoa ai foi ma le polokalame o galuega faatino a le Ofisa.

### Iloiloga o le Ofisa o Fuainumera Faamauina

#### Malosiaga

- Faatauaina faava-o-malo o fuainumera Famauina
- O lo o manino le Taiala mo le Atinaeina o Fuainumera Famauina
- Ua toe Teuteu le Tulafono mo Fuainumera Faamauina
- Alu alu i luma le silafia o le faaaogaina o fuainumera faamauina e fausia ai faiga faavae.
- O lo o iai auala lelei i totonu o le Ofisa e faatino ai vaega nei:
  - O le faiga mo faamatalaga ma fesootaiga faatekonolosi ua faaleleia
  - O le upega tafailagi a le Ofisa ua fausia ma ua faaaogaina.
- O le Ofisa o Fuainumera Faamauina a Samoa ua lauiloa o le taitai i Fuainumera Faamauina i lenei Itulagi
- E lelei le vaega o agai iai le Taitaiga ma le Pulega
- Tele tomai ma faataitaiga lelei na

#### Faaletonu

- E lei maea lelei ona faatinoina teuteuga i le Tulafono
- O lo o faaletonu pea le silafia i le tele o vaega tau i Fuainumera Faamauina.
- O Vaega o le Ofisa o Fuainumera Faamauina e le o iai uma i se fale se tasi
- Tele le manaomia i le faatinoina o le polokalame faalauiloa ma le tuuina atu o fuainumera faamauina.
- E tele le manaomia e le afaigaluega o aoga i mataupu faapitoa e aofia ai Faamatalaga ma Fesootaiga Faatekonolosi ma le Fausia o Polokalame mo le Tuufaatasia o Faamatalaga e maua mai i Suesuega.
- O fesootaiga i le va o vaega o le Ofisa e faaletonu i nisi o taimi ma e moomia le faamalosia.
- E manaomia pea e le Ofisa le fesoasoani ina ia mafai ona ia faatinoina le Taiala mo le faaleleia o Fuainumera Faamauina:
  - aseta, auupega ma le au-faigaluega
  - Tomai, agavaa ma faamaumauga.
  - Alagaoa mai tala o le tupe

<p>maua mai le Poloketi mo le Faaleleia atili o Auaunaga.</p> <ul style="list-style-type: none"> <li>• Ua maea ona toe fetuunai le faatulagana ole Ofisa ma ua iai le Auivi fou lea ua faamalosia ai auaunaga tau i Tagata Faigaluega, Fesootaiga Faatekonolosi ma fesootaiga lea ua uma foi ona faamaonia e le Komisi e Pulea Galuega a le Malo.</li> </ul>	<ul style="list-style-type: none"> <li>○ Manaoga mo se faiga e teu malu ai faamaumauga (aemaise lava i le Ofisa o Resitala)</li> <li>○ Faaleleia o le nofoaga e teu ai faamaumauga ma faamatalaga (aemaise lava i le ofisa o Resitala)</li> <li>• E itiiti le avanoa e mafai ai ona siisii i luga le tulaga o le aufaigaluega ma le maualuga foi o le fegasoloai o le aufaigaluega i isi Ofisa ma Kamupani.</li> <li>• Manaomia le toe faamalosia atili o fesootaiga ma paaga aemaise i latou e maua mai ai faamatalaga tau fuainumera.</li> <li>• Mea tutupu i tua atu (tau i le tagata lava ia ma le vaega lautele) e aveesea ai mafaufau ole au faigaluega mai le faatinoina o latou tiute, ma aafia ai ana auaunaga autu. <ul style="list-style-type: none"> <li>○ O Faaletonu e pei ona maua mai le Suesuega mo le Tulaga o lo o iai le Ofisa faatasi ai foi ma ona suiga e tatau ona faia iai se galuega: <ul style="list-style-type: none"> <li>○ ala tatau, lagolagosua ma le taitaiga</li> <li>○ Auala ma Faiga o lo o faatino ai, ma isi</li> <li>○ faatinoga o galuega a le Pulega</li> </ul> </li> </ul> </li> </ul>
--	--

### **Avanoa Lelei**

- O le Taiala mo le Atinae o Fuainumera Faamauina o lo o iai le faavae taua e mafai ai ona maua mai fesoasoani mai paaga i fafo mo le faatupeina o le polokalame mo suesuega ma tusigaigoa.
- Toe vavae ese mai o le Ofisa o Fuainumera Faamauina mai le Ofisa o Tupe ua faamalositia ai lona tulai mai. Ua mafai ona faaleleia atili atinae tau i faamaumauga ma fesootaiga faatekonolosi aemaise ai lava i le mafai ona teuina lelei faamatalaga a le Ofisa Resitala e faaogaga ai auala Faatekonolosi faaneionapo.
- Toe faamalositia faiga faapaaga ma paaga (i latou e faaogaina fuainumera faamauina faatasi foi mai i latou e maua mai ai faamatalaga ma faamaumauga e fausia ai fuainumera faamauina).
- Ua atinaeina fua faatatau o fuainumera faamauina ma toe faaleleia atili fuainumera mo Vaega Tetele o le Tamaoaiga
- Faatupulaia o le manaomia o auunaga faa fuainumera faamauina e fausia ai faiga faavae mo le Atinae ma faaiuga fai.
- Mafai ona vave maua o faiga faava o malo o faatino ai auunaga
- Faatuina o le Komiti Faufautu mo Galuega faa Fuainumera Faamauina
- Ua ofi atu Samoa e fai ma sui o le aiga o lo o mafai ona faatinoina le faamatuuina atu o Fuainumera Faamauina e faaogaga ai faiga Masani, ma ua atili lelei ai i le vaai mai a Malo ma Faalapotopotoga i fafo.
- Ua faamautu le faatupeina mai fafo o nisi o suesuega laiti i le lumanai.
- Mafai e le aufaigaluega ona auai atu i nisi o polokalame faamasani a Ofisa o Fuainumera Faamauina i fafo.

### **Toatuga**

- E le tumau pea fesoasoani tau tupe mai le tala o le tupe ma isi paaga i fafo.
  - Le mafai ona faatupeina i le tala o le tupe le totogi mo nisi o le aufaigaluega mo Auunaga Lautele, Faamatalaga ma Fesootaiga Faatekonolosi
  - Le faamanuiaina ini vaegatupe mo le polokalame mo suesuega laiti.
- Tele le fegasoloai o le aufaigaluega i nisi o avanoa e faamanuiaina ai ma le toesea o nisi o le aufaigaluega faamoemoeina.
- Aia faapolokiki i nisi o fuainumera faamauina e faalauiloaina
- Le mafai ona maua se Ofisa mautu mo le vaega i Savaii ma le mafai foi ona tuu faatasia le Ofisa atoa i Upolu i se fale se tasi.
- Le mafai e paaga ona faamalietia uma talosaga mo faamatalaga manaomia
- Lei maua lava se faamaoniga o le tulafono fou
- Le mafai ona ausia ma faatinoina galuega e tusa ai ma le saosaoa ua oo iai atinae tau i Auunaga Faatekonolosi
  - Le mafai ona tuu uma faamatalaga pito i lata mai i le upega tafailagi i taimi talafeagai
  - O auupega faatekonolosi fou ma vaega e sui ai e leo maua.
  - E fai ma faaletonu le auala faatekonolosi o fai ai Resitala
- E le mananao pe le mafai e tatou paaga ona tuuina mai faamatalaga tau fuainumera i le Ofisa i taimi talafeagai faifaipea.

## **4. VAAIGA TAULAI A LE OFISA O FUAINUMERA FAAMAUINA MA LONA FAATAUTAIGA**

### **VAAIGA TAULAI**

**Avea le Ofisa o Fuainumera Faamauina o le taitai i le  
tuuina atu o fuainumera faamauina manaomia ma  
faatuatuina mo le manuia o Samoa.**

### **FAATAUTAIGA**

**Fesoasoani ia i latou e faaaogaina fuainumera  
faamauina e faia ni faaiuga tatau ma mataituina ai  
atinae e ala i le tuuina atu o auaunaga ma fuainumera  
faamauina manaomia ma faatuatuaina e maua mai se  
faiga lelei na fausia faatasi e ala i fesootaiga ma ana  
paaga.**

## **5. AGA TAUSILI MA AMIO TATAU A LE OFISA O FUAINUMERA FAAMAUINA**

O aga tausili ma amio tatau e faatino ai auaunaga a le Ofisa o Fuainumera Faamauina e iai le faavae mo le ausiaina o lana Vaaiga Taulai, lona Faatautaiga ma ana Sini Autu ma e tuuina atu ai foi i ana paaga uma e le gata i fafo atu ao lona lava lotoifale i fuainumera faamauina uma i Samoa lea e manaomia e fua iai le ausia o sini autu o ana atinae.

### **AGA TAUSILI**

#### ***Taitaiga***

- ▶ Matou te muamua e ala i faataitaiga i le faatuatuaina, atinaeina ma le faalauiloaina o fuainumera faamauina
- ▶ Matou te siitia le tulaga ma faaaogaina faiga faava-o-malo pito i sili ona faatuatuaina
- ▶ E manino ma malamalama ma mafai foi ona matou tali atu ini faafesili e tulai mai i le faatinoina o matou auaunaga.

#### ***Fesootaiga***

- ▶ Matou te faataua le manino, aanoa ma le fetui lelei ma le manaoga o fesootaiga uma ma matou paaga
- ▶ Matou te faamautinoa matou te malamalama ia i latou uma o aofia ma suia foi matou fesootaiga e faamalieina ai o latou manaoga.

#### ***Maua luga o le ausia o le faatinoga o le tofiga***

- ▶ Matou te faataua le faamoemoeina ma le atoatoa i auaunaga uma matou te faatinoina.
- ▶ Matou te faataua le faamaoni ma le le faaituau i le faatinoina o matou tiute uma mo le vaega lautele ma paaga uma.
- ▶ Matou te faamautinoa o lo o faatinoina le auaunaga i paaga ma le afaigaluega foi i amio faaloalo ma le va fealoai.
- ▶ Matou te taumafai e fausia se siosiomaga e mafai ai e le afaigaluega ona silafia e le gata ina faatauaina o latou sao ae tauivi ai foi mo le faaleleia atili .

### **AMIO TATAU:**

#### ***Mo le malupuipua o faamatalaga mo tagata taitoatasi, o le Ofisa o le a:***

- ▶ Faamautinoa le faalilolilo ma malupuipua o faamatalaga.
- ▶ Faamautinoa le faamaoni ma le sao o faamaumauga ma faamatalaga.

***Ina ia mafai ona tuuina atu fuainumera faamoemoeina ma aoga i le taimi talafeagai, o le Ofisa o le a:***

- ▶ Faaaoga faiga faava o malo pito i sili ona lelei e fausia ai auala ma faiga e faatinoina ai.
- ▶ Sogasoga, e faaaoga ai metotia ma auala faatekonolosi e saga faaleleia atili ai fuainumera faamauina.
- ▶ Tausi pea i taimi faatulagaina e faalauiloa ai faamatalaga ma fuainumera faamauina e faamautinoa ai foi o lo o mafai ona tuuina ripoti ma fuainumera faamauina pito i lata mai i luga o le upega tafailagi a le Ofisa.
- ▶ Faia le mea sili e tali atu ai i talosaga mo faamatalaga faaopoopo manaomia na nisi foi o iloiloga e mafai ona faatinoina i totonu o le lio ma le manaomia o le faalilolilo o faamatalaga.

***Ina ia mafai ona tausisia pea le tele o le faaaogaina o auaunaga mo le Resitala o Vaega taua o le Soifuaga o le Tagata, o le a taumafai le Ofisa e:***

- ▶ Faamautinoa le mafai ona faaaogaina o auaunaga mo le resitalaina o vaega taua i le soifuaga o le tagata e tagatanuu uma o Samoa ma i latou e manaomia.
- ▶ Faaaoga se faiga e faatuatuaina e paaga uma

## **6. SINI AUTU MA TAUNUUGA MANAOMIA**

O le Ofisa o Fuainumera Faamauina o loo faamoemoe e taulamua i le fausia ose Faiga Lelei ma Talafeagai mo Fuainumera Faamauina e mafai ai ona:

- ▶ Faaleleia le tuuina atu o faamatalaga manaomia mo le fausia ma le mataituina o faiga faavae i Samoa
- ▶ Faaleleia le tuuina atu o faamatalaga e faamalieina ai manaoga i le lotoifale o le tatou atunuu, lenei itulagi ma le faa-va-o- malo.
- ▶ Faaopoopo ai i le maua o fuainumera faamauina i taimi talafeagai, faamoemoeina, manino lelei ma aoga e faatatau ia Samoa ma ona tagata.
- ▶ Maualuga ai pea le faamalieina o i latou e faaaogaina
- ▶ Alualu ai i luma tomai ma agavaa o le afaigaluega i auaunaga tau Fuainumera Faamauina

## 7. SINI AUTU ALUALU MAMAO A LE OFISA

O le Taiala mo Fuainumera Faamauina i Samoa o lo o auiliili atu ai sini fuafuaina alualu mamao mo le atinaeina o fuainumera faamauina i Samoa. O le tele o tulafono o lo o faatautaia ai le tuuina atu o auaua a le Ofisa o lo o manaomia ai le avea o ia ma taitai i le tuufaatasia ma faamaopoopoina o galuega uma tau Fuainumera Faamauina.

O le Fuafuaga Autasi la leni o lo o faataatia ai galuega faatino a le Ofisa e lagolago ai i le ausia o nei sini fuafuaina alualu mamao.

**Sini Autu Alualu Mamao 1: Ia tuufaatasia fuainumera sao ma faatuatuaina o le Tamaoaiga i taimi talafeagai:** Saunia ma tuuina atu faamatalaga talafeagai ma maumaututu e faavae ai faiga faavae mautu ma mataitu ai le gasologa o le atinae o le tamaoaiga o Samoa.

**Sini Autu Alualu Mamao 2: Ia atoatoa ona lelei, faatuatuaina ma tuuina atu i taimi talafeagai fuainumera e faatatau i le faitau aofai o tagata ma ituaiga tagata:** Saunia ma tuuina atu faamatalaga manaomia ina ia mafai ai ona faia faiga faavae e faatatau i le faitauaofai o tagata ma isi mataupu, faatasi ai ma le mataituina o le taunuuga o nei faiga faavae.

**Sini Autu Alualu Mamao 3: Saunia Fuainumera Manaomia i taimi talafeagai ma faigofie ona maua e faatatau i le Soifuaga Lautele ma Vaega Tetele o le Atunuu:** Ina ia mafai ona tuuina atu fuainumera manaomia e lagolago ai i le atinae o vaega tetele ma faiga faavae e faatatau i le soifuaga lautele e aofia ai Manulauti o le Meleniuma (MDG), le tagolima faapea fuainumera o le siosiomaga.

**Sini Autu Alualu Mamao 4: Lelei ma Malu Puipuia le Faiga e Resitala ai Vaega Taua o le Soifuaga mo Tagatanuu o Samoa ma lagolagosua ai i ana paaga Faava-o-Malo:** Faamautinoa o lo o faamalieina uma vaega o le Tulafono mo le Resitalaina o e Fananau, Maliliu ma Faaipoipoga.

**Sini Autu Alualu Mamao 5: Faamautinoa le iai ose siosiomaga mautu lea e manaomia e mafai ai ona ausia sini autu ma manaoga tau fuainumera faamauina:** Faamautinoa o lo o iai se siosiomaga pito i sili ona lelei mo le faatinoina o auauanaga faa fuainumera faamauina, e aofia ai le tuu faatasia, fesootaiga ma le faalauiloaina o faamatalaga tau fuainumera, auala ma metotia e faatinoina ai, manaoga tau tupe, alagaoa tau i le afaigaluega ma auala ma fesootaiga faatekonolosi.

**O Galuega Faatino uma a le Ofisa ma alafua mo le taunuuga o ia galuega o lo o auiliili atu i itulau o sosoo ai.**



## 8. SINI AUTU A LE OFISA MA LE FAATULAGANA O LONA FAATINOINA

**Sini Autu 1: Ia tuufaatasia fuainumera sa’o ma faatuatuaina o le Tamaoaiga i taimi talafeagai.** – Saunia ma tuuina atu faamatalaga talafeagai ma maumaututu e faavae ai faiga faavae mautu ma mataitu ai le gasologa o le atinae o le tamaoaiga o Samoa Tuufaatasia: Vaega o Faamaumauga tau Tupe ma le Vaega o Faamaumauga tau i le Tamaoaiga

GALUEGA FAATINO	AUALA E FAATINO AI	FAAILOILO O FAATINOGA	VAEGA E FITOITONU I AI	TAIMI E FAATINO AI
<b>Tuufaatasia o Faamaumauga o le Tamaoaiga</b>	i. Faaauau ona faafou fuainumera faavae mai i suesuega tau i Pisinisi, Tupe Maua ma Tupe Faaalu a aiga, Tusiga Igoa, Suesuega o Faatoaga ma isi suesuega. ii. Faatumauiina faiga paaga lelei ma le Matagaluega o Tupe, Matagaluega o Lafoga, NPF, Faletupe Tutotonu ma paaga totino faa-fuainumera. iii. Faaauau faatalatalanoaga ma sui o faalapotopotoga mai fafo; faufautua faapitoa mai i le Faalapotopotoga o Tupe o le lalolagi (IMF). iv. Faalauiloaina o fuainumera tau i Paleni o Fefaatauaiga ma isi atunuu i taimi talafeagai, ma ia usitaia taiala o ia faamaumauga (BPM6).	Faamauiina i Kuata/Tausaga tai tasi - Oloa/Auaunaga gaosia i Samoa ma tupe o faatauina ai nei Oloa/Auaunaga.  Faalauiloaina o nisi o Faailoilo tau i le Tamaoaiga i Kuata/Tausaga tai tasi.	Vaega o Faamaumauga tau Tupe	Kuata/Tausaga
<b>Tuufaatasia o Fuainumera tau i Oloa Gaosi</b>	i. Faatautaia le Suesuega tau i Oloa Gaosi	Tuufaatasia ma faalauiloaina o Fuainumera tau i Oloa Gaosia i Masina/Kuata/Tausaga	Vaega o Faamaumauga tau Tupe	Masina
<b>Tuufaatasia o Fuainumera o Tupe a le Malo</b>	i. Faaleleia fesootaiga i le Finance One System ii. Faamaumaututu faagasologa o le faamauiina o poloketi ua faatupeina i nonogatupe ma fesoasoani mai fafo. iii. Faatutusa le faaogaina o Faatulagana faava-o-malo i le itu a le malo.	Faamaumauga o Tupe a le Malo i Kuata/Tausaga tai tasi.	Vaega o Faamaumauga tau Tupe	Kuata

<b>Faamaumauga o Fuainumera tau i Aitalafu a le Malo</b>	<ul style="list-style-type: none"> <li>i. Faalauteleina o le tomai i totonu o le vaega o Faamaumauga o le Tamaoaiga.</li> <li>ii. Galulue soosoo taua ma le Matagaluega o Tupe ma le Faletupe Tutotonu.</li> </ul>	Faamauina i Kuata/Tausaga tai tasi.	Vaega o Faamaumauga tau Tupe	Kuata
<b>Tuufaatasia o Fuainumera tau Tagata Faigaluega</b>	<ul style="list-style-type: none"> <li>i. Faamalosia le faiga paaga ma le galulue faatasi ma le NPF.</li> <li>ii. Faamalosia ma toe iloiloaina le resitalaina o pisinisi.</li> </ul>	Faamauina i Kuata/Tausaga tai tasi.	Vaega o Faamaumauga tau Tupe	Kuata
<b>Faatautaia Su'esu'ega o Pisinisi</b>	<ul style="list-style-type: none"> <li>i. Tuufaatasia o se Resitala o Pisinisi.</li> <li>ii. Fausia se mafutaga vava lalata ma le vaega o Pisinisi.</li> </ul>	Ripoti o le suesuega e aofia ai lona fuafuaina, o fuainumera ma faamaumauga ma iuga o le suesuega.	Vaega o Faamaumauga tau Tupe	2016
<b>Fuainumera o Fefaataua'iga</b>	<p>Galulue ma lagolagoina le Ofisa o Tiute mo le faaleleia o faamaumauga tau i Faafetauaiga.</p> <ul style="list-style-type: none"> <li>• Fefaasoai o faamaumauga i auala faa tekonolosi</li> <li>• Iloiloaina o Fuainumera ma Aofai tau faafetauaiga</li> <li>• Iloilo fuainumera i Tau o Oloa auina mai i fafo</li> <li>• Faalauiloaina o Ripoti o Fefaatauaiga i Kuata tai tasi</li> <li>• Tuufaatasia fuainumera i Tau o Oloa auina atu i fafo</li> </ul> <p>Galulue ma le Ofisa o Fuainumera o Niu Sila i le faamautuina o le auaunaga o Faamaumauga o Fuainumera o Fefaatauaiga</p>	<p>Faamauina i Masina tai tasi</p> <p>Faamauina i Kuata tai tasi</p> <p>Faamauina i Kuata tai tasi</p>	<p>Vaega o Faamaumauga tau i le Tamaoaiga</p> <p>Vaega o Faamaumauga tau i le Tamaoaiga</p> <p>Vaega o Faamaumauga tau i le Tamaoaiga</p>	<p>Masina</p> <p>Kuata</p> <p>Kuata</p>
<b>Fuainumera o Tau ma Aofai o Oloa/Auaunaga</b>	<p>Faaleleia tulaga i Faamaumauga i Tau o Oloa/Auaunaga:</p> <ul style="list-style-type: none"> <li>• Faaaogaina faamaumauga mai i le Suesuega o Tupe Maua ma Tupe Faaalu 2013 e Iloilo ai faavae o Faamaumauga i le Suiga o Tau o Oloa/Auaunaga</li> <li>• Feetuunai taiala ma fuainumera o Suesuega tau i Maketi</li> </ul>	<p>Ripoti i Suiga o Tau o Oloa/Auaunaga tai tasi masina</p> <p>Fetuunai Taiala i Faamaumauga i Suiga o Tau o Oloa/Auaunaga</p> <p>Faalauiloaina Ripoti o Suesuega i Maketi</p>	Vaega o Faamaumauga tau i le Tamaoaiga	<p>Masina</p> <p>2014</p> <p>Masina</p> <p>Kuata</p>

	Auai i le faatinoina o Polokalame faatusatusa o Oloa Faava-o-malo	Tuufaatasia fuainumera i le Polokalame faatustusa o Oloa Faava-o-malo		
<p><b>Goal 2: Fuainumera maumaututu, faamoemoeina ma vave maua i le faitau aofai o tagata ma ituaiga o tagata</b>  <b>Tuufaatasia faamaumauga talafeagai i le faitau aofai o tagata ma ituaiga tagata, aua faiga-faavae ma le iloiloina o ona tulaga eseese</b>  <i>Tuufaatasia: Vaega mo Tusiga Igoa ma Suesuega ma le Vaega mo Fuainumera o le Soifuaga Lautele</i></p>				
<b>Fuainumera tau i Femalagaiga</b>	Mata'ituina ma le siakiina o pepa faatumu mo e Malaga ese ma Malaga mai i Samoa Ia o gatasi fuainumera ma le polokalame o le BMS Faamautu le vave maua o nei auaunaga i le faaaogaina o metotia faa-tekonolosi	Tuufaatasia Ripoti tau femalagaiga i Masina/Kuata/Tausaga tai tasi	Vaega mo Fuainumera o le Soifuaga Lautele	Masina Kuata Tausaga
<b>Faamaumauga i le Faitau Aofai ma Faamatalaga o tagata</b>	Tuufaatasia ma faalauiloa fuainumera o le faitau aofai o tagata i Kuata tai tasi	Faafou vaaiga mamao i fuainumera o le faitau aofai o tagata	Vaega mo Tusiga Igoa ma Suesuega	Kuata/Tausaga/ 5 Tausaga
<b>Fuafuaina o Tusiga Igoa ma Suesuega laity ma le Mata'ituina o ona tulaga</b>	Faatautaia A'oa'oga ma Fonotaga talafeagai  Faaaogaina o metotia a Malo Au-faatasi i le mata'ituina ma le fililia o fuainumera tau i tusiga igoa o tagata ma fale Faaaoga Faatulagana Faava-o-malo e pei o Faatulagana o Galuega ma Faatulagana o Ituaiga Galuega Faalauteleina le tomai i le auai atu i aoaoga ma fonotaga talafeagai	Faaleleia le fausiaina o pepa fesili  Faatulagana Faava-o-malo ma ona uiga Faaleleia Taiala mo : <ul style="list-style-type: none"> <li>• Ao Fuainumera</li> <li>• Taitai                      Ao fuainumera</li> <li>• E faanumeraina ma iloiloina</li> <li>• Pulega</li> </ul>	Vaega mo Tusiga Igoa ma Suesuega	On-going

<p><b>Faitau Aofai o Tagata ma Fale 2011</b></p>	<p>Faatinoina o le Faitau Aofai o Tagata ma Fale          Tuufaatasia fuainumera Vaai Mamao o le faitau aofai          Tuufaatasia faamaumauga tau i ituaiga tagata          Tuufaatasia fuainumera tau i Tupulaga Talavou</p>	<p>Ripoti o Fuainumera ma faamatalaga o le Tusiga Igoa          Ripoti o fuainumera Vaai Mamao o le Faitau Aofai, Faamaumauga tau i ituaiga tagata, ma Tupulaga Talavou</p>	<p>Vaega mo Tusiga Igoa ma Suesuega</p>	<p>2011-2012          2013-2014          2013-2014          2013-2014</p>
<p><b>Metotia o le Filifiliga faa fuainumera ma ona faagasologa</b></p>	<p>Faatautaia A'oa'oga ma Fonotaga talafeagai          Faaaogaina polokalame faa-komepiuta talafeagai          Faalauteleina le tomai i le auai atu i aoaoga ma fonotaga talafeagai</p>	<p>Faaleleia Metotia mo le filifilina o aiga mo suesuega</p>	<p>Vaega mo Tusiga Igoa ma Suesuega</p>	<p>Faifai pea</p>
<p><b>Polokalame Faamuina o Nofoga</b></p>	<p>Faatautaia A'oa'oga ma Fonotaga talafeagai          Faaaogaina polokalame faa-komepiuta talafeagai          Faalauteleina le tomai i le auai atu i aoaoga ma fonotaga talafeagai</p>	<p>Ata mai le Tusiga Igoa 2011          Toe faafouina faafanua mai iuga o isi suesuega a le Matagluega          Toe faafouina faafanua mai i iuga o suesuega a paaga totino a le matagaluega e aofia ai <b>Matagaluega o le Punaoa Faa-le-natura, Tina, Tamaitai ma Agafesootai, Pulega o le Suavai, Malosiaga tau Eletise, Pulega o Femalagaiga i le lauelele, Matagaluega o Aoga, Soifua Maloloina, Faatoaga ma Faigafaiva, ma le Matagaluega o Tupe</b></p>	<p>Vaega mo Tusiga Igoa ma Suesuega</p>	<p>2013-2014          Faifai pea</p>

		Faaaogaina o faafanua i suesuega a le Matagaluega, o paaga totino aemaise faalapotopotoga faava-o-malo		
<b>Faalauiloaina ma le Tufatufaina o Faamaumauga tau i le faitau aofai</b>	<p>Faatautaia fonotaga ma i latou o faia faigafaavae ma tulafono</p> <p>Faatautaia faatalatalanoaga ma paaga totino ma le lautele</p> <p>Tuufaatasia faailoilo tau i le faitau aofai ma tuuina atu i Leitio ma Nusipepa</p> <p>Faalauteleina le tomai i le auai atu i aoaoga ma fonotaga talafeagai</p>	<p>Faalauiloa galuega faatino a le Matagaluega o Fuainumera</p> <p>Faaleleia atili le galulue faatasi ma paaga totino, tagata lautele ma leitio ma nusipepa</p> <p>Faatuputupulaia le moomia o auaunaga faa fuainumera</p>	Vaega mo Tusiga Igoa ma Suesuega	Faaauau
<p><b>Suesuega tau i le Soifua Maloloina</b></p> <p><b>Suesuega tau i Sauaga</b></p> <p><b>Suesuega tau Manaoga Faapitoa</b></p> <p><b>Suesuega Faa-vaitaimi</b></p>	<p>Aoina mai faamatalaga</p> <p>Tuufaatasia Ripoti</p>	<p>Ripoti o le Suesuega tau i le Soifua Maloloina</p> <p>Ripoti o Suesuega tau i Sauaga ma Suesuega tau manaoga Faapitoa</p> <p>Ripoti o Suesuega Faa-vaitaimi</p>	Vaega mo Tusiga Igoa ma Suesuega	<p>2014</p> <p>2015-2016</p>
<b>Lolomiina o Tusi Faa-fuainumera</b>	Galulue ma le Vaega o loo faa-komepiutaina fuainumera mo le faalauiloaina o nei polokalame	Ripoti o Tusiga Igoa ma Suesuega Laiti	Vaega mo Tusiga Igoa ma Suesuega & Vaega Faa-komepiuta Fuainumera	Faaauau
<b>Aofai o Aiga i totonu o Poloka faa Tusiigoa</b>	Toe faafou lisi o Aiga mo le Tusiga Igoa 2016	Lisi o Aiga i poloka tai tasi	Vaega mo Tusiga Igoa ma Suesuega	2015-2016
<b>Aofai o Faafanua o Poloka faa Tusiigoa</b>	Toe faafou faafanua o mo le Tusiga Igoa 2016	Faafanua o poloka tai tasi	Vaega mo Tusiga Igoa ma Suesuega	2015-2016
<b>Faitau Aofai o Tagata ma Fale 2016</b>	Faatautaia le faitau aofai o tagata ma fale 2016	Mae`a aoina faamaumauga o Tusiga Igoa	Vaega mo Tusiga Igoa ma Suesuega	Novema, 2016

<b>Goal 3: Ia atoatoa ma vave maua, sao ma faatuatuaaina fuainumera o le Soifuaga Lautele ma Vaega Ecese: Ia saunia faamatalaga talafeagai mo le ausia o sini autu o faigafaavae tau i le soifuaga lautele, e iai Manulauti o le Mileniuma (MDG), le a'ua'u le faasoa faapea fuainumera o le siosiomaga</b>				
Tuufaatasia: Vaega o Fuainumera o le Soifuaga Lautele, Vaega o Tusigaigoa ma Suesuega ma le Vaega o Faamaumauga tau i le Tamaoaiga				
<b>GALUEGA FAATINO</b>	<b>FAATINOGA</b>	<b>FAAILOILO O FAATINOGA</b>	<b>VAEGA E FITOITONU I AI</b>	<b>TAIMI E FAATINO AI</b>
<b>Tusi o Faamaumauga Faa-fuainumera</b>	Tuufaatasia ma faalauiloa	Maliliega mo le faafesoaa'i o fuainumera Faalauiloaina leni tusi i taimi talafeagai	Vaega mo Fuainumera o le Soifuaga Lautele	Faatumauina le fou o faamatalaga i luga o le upega tafa i lagi
<b>Faamaumauga tau i Atina'e Tetele</b>	Faamalositia le galulue soosoo tauau ma paaga e pei o Matagaluega o Galuega ma Atina'e Tetele, Matagaluega o Faamaumauga Faa-tekonolosi, Pulega o le Suavai, Malosiaga faa Eletise ma le Pulega o Femalagaiga i le laueleele	Faamauina Ripoti i Kuata ma Tausaga tai tasi i tulaga i le Malosiaga, Vai ma ripoti o Fale	Vaega mo Fuainumera o le Soifuaga Lautele & Vaega o Faamaumauga tau i le Tamaoaiga	Tausaga
<b>Faamaumauga i Fela'uaiga</b>	Galulue faatasi ma le Pulega o Femalagaiga i luga o le Laueleele  Galulue soosoo tauau ma le Matagaluega o Tupe Maua, Pulega o Uafu ma Taulaga ma Kamupani Vaa	Tuufaatasia fuainumera o taavale i Kuata tai tasi  Tuufaatasia faamaumauga tai 6 masina ma le tai tausaga	Vaega o Faamaumauga tau Tupe  Vaega o Faamaumauga tau i le Tamaoaiga	Kuata  <i>Tausaga/ Afa Tausaga</i>
<b>Faamaumauga tau i Galuega</b>	Suesuega tau i Galuega  Suesuega o tagata ua tuua aoga mo galuega	Tuufaatasia Ripoti mo nei Galuega uma	Vaega mo Fuainumera o le Soifuaga Lautele	2013
<b>Faamaumauga tau i Aoaoga</b>	Faamalositia fesootaiga ma paaga totino e pei o le Matagaluega o Aoga	Maliliega ma i latou e ona faamaumauga mo le faalauiloaina o a latou faamaumauga i totonu o tusi faamaumua faa-fuainumera Faalauiloa fuainumera o	Vaega mo Fuainumera o le Soifuaga Lautele	2014

		Tusiga Igoa		
<b>Faamaumaga tau i le Soifua Maloloina</b>	Faamalositia fesootaiga ma paaga totino e pei o le Matagaluega o le Soifua Maloloina, Auaunaga Faa-Soifua Maloloina, ma le Matagaluega o Tina, Tamaitai ma Agafesootai	Maliliega ma i latou e ona faamaumaga mo le faalauiloaina o a latou faamaumaga i totonu o tusi faamaumua faa-fuainumera Faalauiloa fuainumera o Tusiga Igoa	Vaega mo Fuainumera o le Soifuaga Lautele	Faalauiloaina uma fuainumera fou tai tausaga
<b>Faamaumaga tau i Soliga Tulafono</b>	Faamalositia fesootaiga ma paaga totino e pei o le Matagaluega o Leoleo, Pulega o Felauaiga i luga o le Laueleele ma le Matagaluega o Faamasinoga	Maliliega ma i latou e ona faamaumaga mo le faalauiloaina o a latou faamaumaga i totonu o tusi faamaumua faa-fuainumera	Vaega mo Fuainumera o le Soifuaga Lautele	Tai tausaga
<b>Faamaumaga i le Lima Vaivai ma le Le Tagolima</b>	Faatautaia le Suesuega o Tupe Maua ma Tupe Faaalu ma tuufaatasia faamaumaga o le Lima Vaivai ma le Le Tagolima	Tuufaatasia faailoilo o le Lima Vaivai ma le Le Tagolima ma nisi faailoilo e aofia aim ea tau soifua maloloina e ala i mea taumafa	Vaega mo Fuainumera o le Soifuaga Lautele & Vaega o Faamaumaga tau i le Tamaoaiga	2013/2014
<b>Faamaumaga tau i le Siosiomaga</b>	Faamalositia fesootaiga ma paaga totino e pei o le Matagaluega o Punaoa Faale-natura, Ofisa o Vaaitau	Maliliega ma i latou e ona faamaumaga mo le faalauiloaina o a latou faamaumaga i totonu o tusi faamaumua faa-fuainumera	Vaega mo Fuainumera o le Soifuaga Lautele	2014
<b>Faamaumaga tau i Faatoaga ma Faigafaiva</b>	Galulue ma le Matagaluega o Faatoaga ma Faigafaiva: <ul style="list-style-type: none"> <li>Tuufaatasia fuainumera tau faatoaga ma faigafaiva ina ia mafai ona fesoasoani i le atinaeina o lenei vaega</li> <li>Toe faamatuina suesuega o faatoaga</li> <li>Faatalatalanoa nisi o fuainumera taua tau i</li> </ul>	Faatautaia tusiga igoa ma suesuega o faatoaga ma faalauiloa o latou ripoti  Faamaumaga i faatoaga e le faatauina o loo maua i le Suesuega o Tupe Maua ma Tupe Faaalu	Vaega o Faamaumaga tau i le Tamaoaiga	Suesuega o Faatoaga 2015

	mea taumafa			
<b>Faamaumauga tau i Turisi</b>	Faamalosia fesootaiga ma paaga totino	Tuufaatasia o ripoti tai Masina i Turisi ma tagata tafafao  Susuega tau i Turisi	Vaega mo Fuainumera o le Soifuaga Lautele	Masina/Kuata/Tausaga  2 Tausaga
<p><b>Sini Autu 4: Lelei ma Malu Puipuia le Faiga e Resitala ai Vaega Tauga o le Soifuaga mo Tagatanuu o Samoa ma lagolagosua ai i ana paaga Faava-o-Malo:</b> Faamautinoa o lo o faamalieina uma vaega o le Tulafono mo le Resitalaina o e Fananau, Maliliu ma Faaipoipoga. Tuufaatasia: Vaega mo le Resitalaina o e Fananau, Maliliu ma Faaipoipoga</p>				
<b>GALUEGA FAATINO</b>	<b>AUALA E FAATINO AI</b>	<b>FAAILOILO O FAATINOGA</b>	<b>VAEGA E FITOITONU I AI</b>	<b>TAIMI E FAATINO AI</b>
<b>Resitala o vaega Taua o le soifuaga; Fanau mai, Maliu ma Faaipoipoga</b>	<p>Saunia se auala lelei ma malu puipuia e faatino ai le Resitala o Vaega taua ole soifuaga o tataganuu o Samoa .</p> <p>Galulue faatasi le Ofisa ma le Matagaluega o Soifua Maloloina ma le Falemai i vaega talafeagai e faaleleia ai auala faatekonolosi ma faiga o lo o aoina, tuufaatasia, iloiloaina ma teuina ai faamaumauga ina ia siitia ai vaega e mafai ona faaaogaina, ma mafai ai ona teuina atu nei faamatalaga e uiga i resitala ma vaega taua o le soifuaga i taimi talafeagai.</p> <p>Faamautinoa o lo o silafia uma ei latou e faaaogaina le resitala vaega uma e manaomia mo le resitala o faamatalata taua o le soifuaga</p>	<p>Atinae ma faatinoina alafua mo le faatinoina o auunaga tau resitala o e fananau, maliliu ma faaipoipoga.</p> <p>Faatinoina le tuuina uma o faamaumauga manaomia mo e Fananau, Maliliu ma Faaipoipoga i le faiga faatekonolosi ma ia teuina malu puipuia i aso uma.</p> <p>O le faaleleia o le resitala o e Fananau, Maliliu ma Faaipoipoga e faaleleia ai foi nei ituaiga faamaumauga</p> <p>Faalauiloa le aofia o e fananau mai, maliliu ma faaipoipoga</p> <p>Faatinoina i masina taitasi polokalame faalauiloa</p>	Vaega mo le Lesitalaina o e Fananau, Maliliu ma Faaipoipoga	<p>Faifai pea</p> <p>Faamaeaina i le 2013</p> <p>Tautaga taitasi</p> <p>Masina</p>



<b>Sini Autu 5: Faamautinoa le iai ose siosiomaga mautu lea e manaomia e mafai ai ona ausia sini autu ma manaoga tau fuainumera faamauina:</b> Faamautinoa o lo o iai se siosiomaga pito i sili ona lelei mo le faatinoina o auaua faa fuainumera faamauina, e aofia ai le tuu faatasia, fesootaiga ma le faalauiloaina o faamatalaga tau fuainumera, auala ma metotia mo galuega tau fuainumera faamauina, manaoga tau tupe, alagaoa tau i le aufaigaluega ma auala ma fesootaiga faatekonolosi.				
<b>Tuufaatasia:</b> Vaega o Fuafuaga ma Auaua Lautele & Vaega mo Fautuaga ma Auaua mo Faamatalaga Faatekonolosi				
<b>GALUEGA FAATINO</b>	<b>AUALA E FAATINO AI</b>	<b>FAAILOILO O FAATINO</b>	<b>VAEGA E FITOITONU I AI</b>	<b>TAIMI E FAATINO AI</b>
<b>Atinaeina ma le Pulega o Alaoa tau Tagata Faigaluega</b>	Faatinoina o Tiute mo le Atinaeina ma le Pulega o Alaoa Tau Tagata Faigaluega  Faatinoina le Iloiloina o le faatinoina o Galuega	Faatinoina o aoaoga i masina taitasi e aofia ai: mataupu faamasani mo le aufaigaluega fou, nisi o tomai faapitoa ma aoaoga na auai atu ai i nuu mamao.  Faatinoina le iloiloina o le faatinoina o tiute o le aufaigaluega i tausaga taitasi	Vaega o Fuafuaga ma Galuega Lagolago  Vaega o Fuafuaga ma Galuega Lagolago ma isi vaega uma	Masina taitasi  Tasi i le tausaga
<b>Toe iloilo ma Teuteu le Tulafono mo Fuainumera Faamauina</b>  <b>Toe iloilo ma Teuteu le Tulafono mo le Resitala o e Fananau, Maliliu ma Faaipoipoga</b>	Pasia le Tulafono Taufaaofi e le Palemene  Faamalosia le Tulafono	Iai le tulafono fou  Faatuina ma faatinoina tiute o le Komiti Faufautua mo Fuainumera Faamauina  Pasia le Tulafono Fou mo le Resitalaina o e Fananau mai, Maliliu ma Faaipoipoga	Vaega o Fuafuaga ma Gauega Lagolago & isi Vaega uma  Vaega mo le Resitalaina o e Fananau, Maliliu ma Faaipoipoga	2014  2014/15
<b>Mafai ona maua fuainumera manaomia ma faatuatua</b>	Atinae se faiga e mafai ona teuina uma iai faamatalaga a le Ofisa	Faaaogaina le auala e teuina uma ai faamatalaga a le Ofisa e mafai ona faaogaina uma e le au faigaluega  Statistical Clearing House established	Vaega mo Fautuaga ma Auaua mo Faamatalaga Faatekonolosi	2013/14

	<p>Atinae se vaega latou te faia ni alafua e tataua ona mulimulitaia e faamautinoa le lelei atoatoa o faamatalaga tau fuainumera ao lei faalauiloina</p> <p>Faatinoina le faiga faavae mo le faalauiloina o faamatalaga tau fuainumera</p> <p>Faaauau le faatinoina o galuega faalauiloa ia silafia ai pea e le atunuu manaoga mo le Resitala.</p>	<p>and operational</p> <p>Tofia se tasi e gafa ma tiute tau Upega Tafailagi/Faalauiloina o Faamatalaga</p> <p>Faatupulaia le aofai o i latou e asia le upega tafailagi a le Ofisa.</p>	<p>Isi Vaega uma pe a manaomia</p> <p>Vaega mo Fautuaga ma Auaunga mo Faamatalaga Faatekonolosi</p>	<p>2013</p> <p>Faifai pea faatasiga ma le mamalu lautele e faailoa ai faamatalaga tau fuainumera pe a faalauiloa.</p>
<p><b>Auaunaga e tuufaatasia ai faaiuga o Suesuega ma Tusigaigoa ma Fesootaiga faatekonolosi</b></p>	<p>Atinae auala e faaoga ai auala faatekonolosi e tuufaatasia ai faamatalaga e maua mai Tusigaigoa ma Suesuega laiti</p> <p>Faaleleia atili le auala faatekonolosi e tuufaatasia ai faamatalaga o le fegasoloai o tagata.</p> <p>Tuuina atu le lagolagosua i auaunaga faatekonolosi i vaega uma o le Ofisa.</p> <p>Mataitu ma tuuina uma faamatalaga pito i lata mai i le upega tafailagi.</p> <p>Vaavaaia tautua faatekonolosi o faaoga e le Resitala mo e Fananau mai, Maliliu ma Faaiipoipoga</p>	<p>Saunia faamatalaga e faaoga e le mamalu lautele</p> <p>Tuufaatasia faaiuga o vaega taitasi e pei ona auiliili i fuafuaga mo Tusigaigoa ma Suesuega Laiti</p> <p>Tuufaatasia faamaumauga mo le femalagai o tagata i masina taitasi, kuata uma ma faatasi i le tausaga</p> <p>Mauuluga le faatinoina to auauna manaomia faatekonolosi e lagolagosua ai i galuega faatino a le Ofisa</p> <p>Ripoti uma ia tuuina i luga o le Upega Tafailagi i le aso e faalauiloa ai</p> <p>Faia ripoti i masina uma i vaega e sese ai le auala e faatino ai nei ituaiga auaunaga.</p> <p>Faia se resitala e faamaumau ai le faatinoga o le sefeina o Faamatalaga.</p> <p>Faaoga se Ofisa i sesi nofoaga e teu malu ai Faamatalaga</p>	<p>Vaega mo Fautuaga ma Auaunga mo Faamatalaga Faatekonolosi</p>	<p>As required by census &amp; survey schedule</p> <p>Ongoing, data published within one month</p> <p>2013</p> <p>Masina taitasi</p> <p>Faifai pea</p> <p>Faifai pea</p>

	Vaavaaia tautua faatekonolosi o faaaogaina e le Ofisa o Fuainumera Faamauiina			
<b>Lelei ma atoatoa le pulega o le Ofisa</b>	Atinae ma faatinoina se faiga e mafai ona tapue ai finagalo o le afaigaluega i le fatinoina o auunaga	Ripoti mai i masina taitasi i finagalo o le Au faigaluega i le faatinoina o le tautua a le Ofisa  Faaleleia faaiuga e maua mai le HOCCCR	Vaega o Fuafuaga ma Auunaga Lagolago	2014/15
<b>Lelei le pulega o Tupe</b>	Mulimulitaia manaoga uma o le tulafono mo le Pulega o Tupe a le Malo ma le Faatulagana o lona faatinoina mai le Ofisa o Tupe	Tuaina atu i faaululuga o vaega taitasi i masina taitasi ripoti o le faaaogaina o vaegatupe	Vaega o Fuafuaga ma Auunaga Lagolago	Masina taitasi
<b>Lelei le Pulega o Faamatalaga</b>	Faamautinoa o faamatalaga uma e oo mai i le Ofisa ma isi e tuaina atu i ana paaga o lo o teuina i se nofoaga e tasi Saunia se ripoti o fesootaiga uma	Faifai pea  Tuaina atu ripoti o fesootaiga uma i le Pulega i masina taitasi	Vaega o Fuafuaga ma Auunaga Lagolago  Vaega o Fuafuaga ma Auunaga Lagolago	Faifai pea  Masina taitasi

## 9. POLOKALAME MO TUSIGAIGOA/SUESUEGA LAITI 2012 E OO I LE 2016

Tausaga	Suesuega	Taimi e Faatino ai
2012	Suesuega o Tupe Faaalu a Turisi	2-tausaga i le amataga
2012	Tusigaigoa o Lafu Manu	Pe a manaomia
2012	Suesuega o Fualaau Aina ma Taumafa Mata	Pe a manaomia
2012	Suesuega mo le Au Faigaluega	Pe a manaomia
2012	Suesuega mo le tuua o le Aoga ae Faigaluega	Pe a manaomia
2013	Suesuega o Tupe Maua ma Tupe Faaalu	5 tausaga ma faatino
2103	Suesuega o le Eseelega o Vaega e oo iai Faamai	5 tausaga ma faatino
2013	Suesuega a Leoleo	Pe a manaomia
2103	Suesuega o le Faaaoga Tatau o le Malosiaga	Pe a manaomia
2014	Suesuega Tau i le Soifua Maloloina	5 tausaga ma faatino
2014	Suesuega o le Vaega Tau Faatoaga	2015
2014	Suesuega o Tupe Faaalu a Turisi	2 tausaga i le amataga
2015	Suesuega o Galuega, Aoaoga ma Agavaa	5 tausaga ma faatino
2016	Tusigaigoa o le Faitau Aofai ma Fale	5 tausaga ma faatino
2016	Suesuega o Tupe Faaalu a Turisi	3 tausaga ma faatino
2016	Suesuega o Pisinisi	3 tausaga ma faatino

Faamatalaga: O isi suesuega mo mataupu taua e mafai lava ona faatinoina pe a iai ni alagaoa e faatino ai

# 10. AUIVI O LE FAATULAGANA O LE OFISA

## FAATULAGANA O LE OFISA

