

Please address all correspondence  
To Government Statistician  
In reply, please quote the file reference



GOVERNMENT OF SAMOA

File Ref: CPI 11/18

## SAMOA BUREAU OF STATISTICS

# CONSUMER PRICE INDEX November 2018

### Key findings:

The Consumer Price Index for November 2018 decreased by 2.2 percent compared to the previous month.

- Housing, Water, Electricity, Gas and other Fuels index decreased by 5.8 percent driven by reduced electricity price.
- The Food and Non Alcoholic Beverages index also decreased by 3.9 percent.
- The Average Annual Inflation for the year ended November 2018 was 4.4 percent.

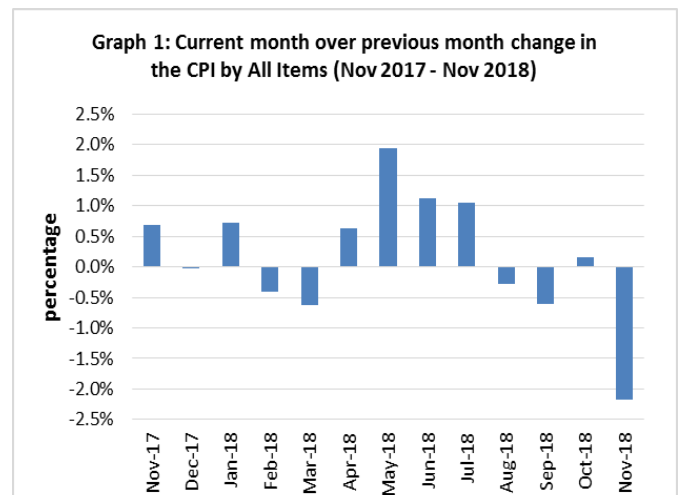
In the year to November 2018, the CPI rose 1.5 percent.

### SUMMARY

The Consumer Price Index for November 2018 was 2.2 percent lower than in October 2018 and was 1.5 percent higher than November 2017.

The decrease of the Local Goods component by 2.5 percent from the previous month was due to lower prices for electricity and local food, which was also the main contributor to the decrease of 2.2 percent in the All Items Consumer Price Index.

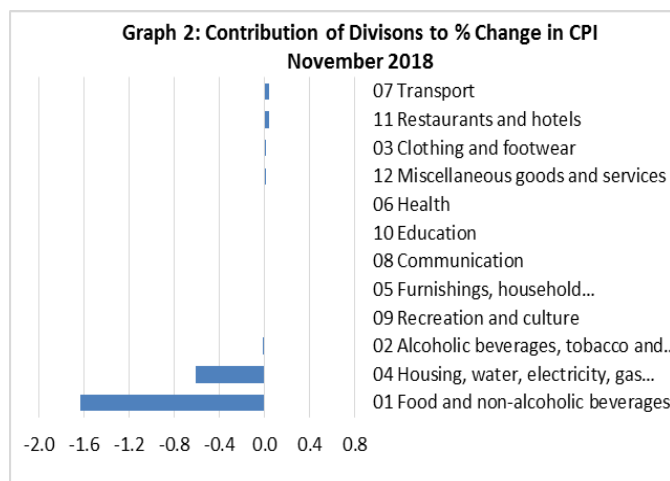
The Imported Goods Component also registered a decrease of 1.9 percent from the previous month. Graph 1 shows the month to month percentage changes in the Consumer Price Index by all Divisions from November 2017 to November 2018.



Source : Samoa Bureau of Statistics

## Total All Divisions Contribution

As depicted in Graph 2, Food and Non Alcoholic Beverages along with Housing, Water, Electricity, Gas and other Fuels division were the main contributors to the overall decrease of 2.2 percent in the All Division Consumer Price Index.



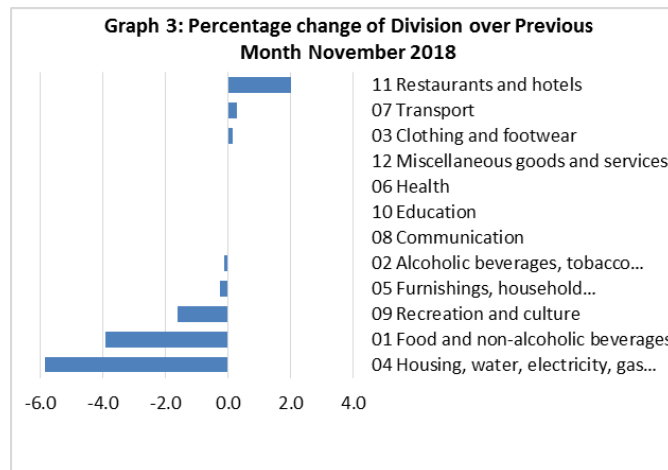
Source : Samoa Bureau of Statistics

## Consumer Price Index (% Change)

The 2.2 percent decrease in the Overall Index was mainly due to a decrease of 5.8 percent in the Housing, Water, Electricity, Gas and other Fuels index. The Food and Non Alcoholic Beverages, Recreation and Culture, Furnishing, Household Equipment and Maintenance and Alcoholic Beverages and Tobacco indices showed decreases of 3.9, 1.6, 0.3 and 0.1 percent respectively.

On the contrary, increases were recorded for other divisions namely Restaurants with 2.0 percent, Transport with 0.3 percent and Clothing and Footwear with 0.2 percent.

No changes were recorded for the Health, Communication, Education and Miscellaneous Goods and Services indices. Graphically presented in Graph 3 is the November 2018 percentage change for all divisions from October 2018.



Source : Samoa Bureau of Statistics

## Local Goods Component

The Local Goods Component of the Consumer Price Index registered a decrease of 2.5 percent when compared to the previous month. This decrease was mainly due to lower prices recorded for electricity (kwh), airline fare (Apia-Auckland-Apia), fresh fish (piece and string), koko samoa, green banana, cucumber, coconut and taamu.

## Imported Goods Component

Decreased prices recorded for chicken leg quarter, raw sugar, turkey wings and laptop have resulted in the 1.9 percent decrease in the Imported Good Component.

## Housing, Water, Electricity, Gas and other Fuels Index

The 5.8 percent decrease in the Housing, Water, Electricity, Gas and other Fuels index was a result of the lower prices recorded for electricity (kwh).

## Food and Non Alcoholic Beverages Index

Lower prices recorded for chicken leg quarter, turkey wings, fresh fish (piece and string), koko samoa, green banana, cucumber, coconut, taamu is reflected in the 3.9 percent decrease in the Food and Non Alcoholic Beverages index.

## Recreation and Culture Index

A decrease of 1.6 percent in the Recreation and Culture index was a reflection of the lower prices recorded for laptop and exercise book.

## Restaurants Index

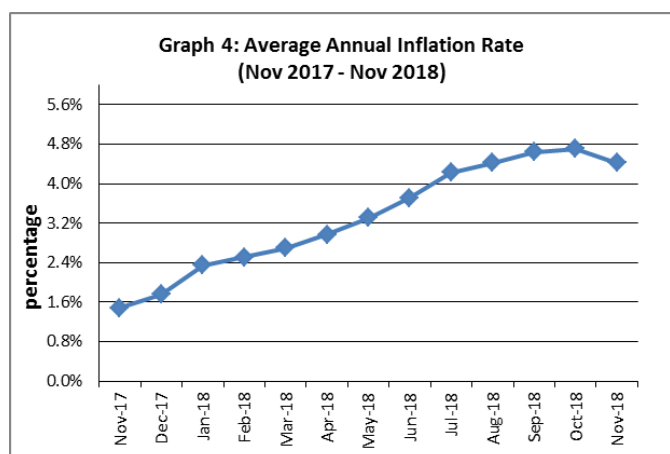
Higher prices recorded for meal (curry & chopsy) is reflected in the 2.0 percent increase in the Restaurants index.

## Underlying Indices <sup>1/</sup>

The All Items Underlying Index for November 2018 registered a decrease of 2.0 percent when compared to October 2018, and a decrease of 1.6 percent when compared to November 2017. The Imported Items Underlying Index registered a decrease of 3.1 percent, while the Local Items Underlying Index recorded an increase of 0.3 percent.

## Inflation Rate

The average annual inflation rate for the year ended November 2018 was 4.4 percent. For the twelve months ending November 2017 the inflation rate was 1.5 percent. Presented in Graph 4 is the average annual inflation rate (November 2017 - November 2018).



Source : Samoa Bureau of Statistics

The attached Tables and Graphs provide the user with more detailed analysis.

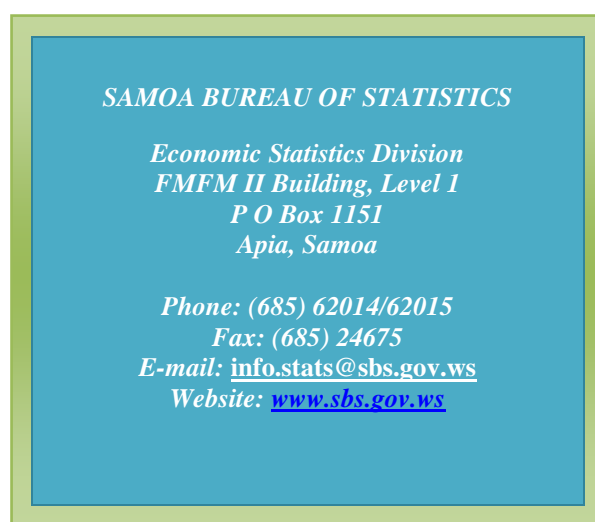
## Technical Notes:

The Consumer Price (CPI) measures the rate of inflation for Samoa. It is designed to measure the change in prices for the goods purchased by households in Samoa. The CPI measures the change in prices by comparing the prices for a basket of goods and services at the collection period with the price for the same goods in a base period.

The basket of goods that is priced is based on the average expenditures of households as recorded in the Household Income and Expenditure Survey (HIES). The HIES survey identifies how much households spend on different items. The more households spend on an item on average, the more important it is to the price index, and the higher the weight in the index.

<sup>1/</sup> Monthly movements in the 'headline' CPI series can be volatile. This volatility reflects price changes in particular items that may be due, among other factors, to fluctuations in commodity markets and agricultural conditions, policy changes, or seasonal or infrequent price resetting.

Underlying inflation is a measure of inflation that excludes certain items that face volatile price movements. Underlying inflation eliminates products that can have temporary price shocks because these shocks can diverge from the overall trend of inflation and give a false measure of inflation.



Date of release: 11<sup>th</sup> December 2018.

The next Consumer Price Index will be released on 11<sup>th</sup> January 2019.

**Mātaao Edith N Taosoga-Faola**  
**ACTING GOVERNMENT STATISTICIAN**

**Table 1. CONSUMER PRICE INDEX.**

**(Base Period : Average Prices February 2016 = 100)**

Group	All Items	Food and Non Alcoholic Beverages	Alcoholic Beverages, Tobacco and Narcotics	Clothing and Footwear	Housing, Water, Electricity, Gas and other Fuels	Furnishings, Household Equipment, and Maintenance	Health	Transport	Communication	Recreation and Culture	Education	Restaurants	Miscellaneous goods and services
<i>Weights</i>	<b>1000.0</b>	<b>403.7</b>	<b>128.4</b>	<b>21.2</b>	<b>119.6</b>	<b>30.8</b>	<b>4.6</b>	<b>148.5</b>	<b>51.5</b>	<b>6.1</b>	<b>19.7</b>	<b>22.4</b>	<b>43.5</b>
<i>Ave - 2015</i>	99.8	97.9	97.7	98.6	106.0	99.7	99.9	108.7	100.0	99.9	100.0	98.7	99.2
<i>Ave - 2016</i>	101.1	103.7	102.8	98.8	92.6	99.4	99.2	101.3	100.0	95.4	101.1	99.3	100.6
<i>Ave - 2017</i>	102.9	105.1	107.6	96.6	92.2	99.1	95.6	107.3	101.2	90.7	97.9	98.3	98.1
2017													
November	105.0	108.0	108.7	95.7	94.7	98.9	95.3	109.8	103.4	92.0	97.8	98.6	97.7
December	105.0	108.4	108.7	95.8	92.7	98.3	95.3	110.6	103.4	92.0	97.8	98.6	97.6
2018													
January	105.7	108.6	110.3	95.7	93.0	98.3	95.3	113.5	103.4	91.7	97.8	98.6	97.5
February	105.3	108.2	110.6	94.7	90.9	98.6	95.3	111.3	103.4	92.9	111.6	98.6	97.6
March	104.7	106.8	110.9	94.6	89.4	99.0	95.3	112.0	103.4	92.9	111.6	98.6	96.8
April	105.3	107.9	111.1	95.0	90.7	98.8	95.3	111.9	103.4	93.2	111.6	98.6	97.5
May	107.4	112.1	112.5	95.0	89.8	98.4	95.3	113.6	103.4	93.2	111.6	98.6	97.9
June	108.6	115.3	112.1	95.0	88.1	97.3	95.3	115.2	103.4	93.2	111.6	98.6	97.6
July	109.7	116.7	112.0	95.0	89.7	97.6	98.5	117.4	103.4	93.2	111.6	98.6	98.3
August	109.4	115.6	113.2	95.0	92.9	97.2	98.5	114.9	103.4	92.0	111.6	98.6	98.1
September	108.7	113.1	113.6	94.8	93.5	98.2	98.5	116.1	103.4	92.0	111.6	98.6	97.9
October	108.9	112.4	113.8	96.0	95.2	97.9	98.5	117.4	103.4	93.8	111.6	98.6	98.0
November (P)	106.5	108.1	113.6	96.2	89.7	97.6	98.5	117.8	103.4	92.3	111.6	100.6	98.0
<b><u>Percentage Change (P)</u></b>													
Nov 2018 over Oct 2018	-2.2%	-3.9%	-0.1%	0.2%	-5.8%	-0.3%	0.0%	0.3%	0.0%	-1.6%	0.0%	2.0%	0.0%
Nov 2018 over Nov 2017	1.5%	0.0%	4.5%	0.5%	-5.3%	-1.3%	3.3%	7.2%	0.0%	0.3%	14.1%	2.0%	0.3%

Source : Samoa Bureau Statistics

(P) : Provisional figures

Note : n.a. Not applicable

**Table 2. ALL ITEMS UNDERLYING INDEX**

**(Base Period : Average Prices February 2016 = 100)**

Group	All Items	Food and Non Alcoholic Beverages	Alcoholic Beverages, Tobacco and Narcotics	Clothing and Footwear	Housing, Water, Electricity, Gas and other Fuels	Furnishings, Household Equipment, and Maintenance	Health	Transport	Communication	Recreation and Culture	Education	Restaurants	Miscellaneous goods and services
<i>Weights</i>	<b>586.7</b>	<b>345.3</b>	<i>n.a</i>	<b>21.2</b>	<b>24.2</b>	<b>30.8</b>	<b>3.5</b>	<b>26.4</b>	<b>51.5</b>	<b>5.6</b>	<b>12.3</b>	<b>22.4</b>	<b>43.5</b>
Ave - 2015	102.5	103.5		98.7	101.7	99.7	99.8	101.9		98.3		98.7	99.2
Ave - 2016	101.7	103.2		98.8	97.5	99.4	99.0	100.2		95.0		99.3	100.6
Ave - 2017	104.1	107.9		96.6	93.8	99.1	94.2	104.2	101.2	90.0	96.7	98.3	98.1
2017													
November	107.2	112.5		95.7	92.8	98.9	93.8	111.4	103.4	91.4	96.5	98.6	97.7
December	106.7	111.8		95.8	92.6	98.3	93.8	109.9	103.4	91.4	96.5	98.6	97.6
2018													
January	105.4	109.5		95.7	92.5	98.3	93.8	112.3	103.4	91.0	96.5	98.6	97.5
February	105.8	109.3		94.7	94.1	98.6	93.8	112.1	103.4	92.4	115.6	98.6	97.6
March	104.7	107.5		94.6	93.3	99.0	93.8	112.1	103.4	92.4	115.6	98.6	96.8
April	104.6	107.3		95.0	92.9	98.8	93.8	112.5	103.4	92.7	115.6	98.6	97.5
May	106.9	111.1		95.0	93.1	98.4	93.8	112.5	103.4	92.7	115.6	98.6	97.9
June	109.7	116.0		95.0	93.3	97.3	93.8	112.3	103.4	92.7	115.6	98.6	97.6
July	109.2	115.2		95.0	93.2	97.6	98.0	111.3	103.4	92.7	115.6	98.6	98.3
August	108.8	114.7		95.0	92.6	97.2	98.0	111.3	103.4	91.3	115.6	98.6	98.1
September	107.9	113.0		94.8	92.9	98.2	98.0	109.9	103.4	91.4	115.6	98.6	97.9
October	107.7	112.7		96.0	94.0	97.9	98.0	107.7	103.4	93.3	115.6	98.6	98.0
November (P)	105.5	108.8		96.2	94.5	97.6	98.0	107.8	103.4	91.7	115.6	100.6	98.0
<b><u>Percentage Change (P)</u></b>													
Nov 2018 over	-2.0%	-3.4%		0.2%	0.6%	-0.3%	0.0%	0.2%	0.0%	-1.7%	0.0%	2.0%	0.0%
Oct 2018													
Nov 2018 over	-1.6%	-3.2%		0.5%	1.9%	-1.3%	4.5%	-3.2%	0.0%	0.4%	19.7%	2.0%	0.3%
Nov 2017													

Source : Samoa Bureau Statistics

(P) : Provisional figures

Note : n.a. Not applicable

**Table 3. AVERAGE RETAIL PRICES OF SELECTED COMMODITIES**

Commodities	Wt	Unit	2017			2018		
			Sep	Oct	Nov	Sep	Oct	Nov (P)
<b>01 Food and non-alcoholic beverages</b>								
Leg Quarters Chicken	62.2	kg	4.32	4.51	4.45	4.56	4.50	4.01
Raw Sugar	21.3	kg	3.05	2.95	3.05	2.74	2.68	2.63
Bread	17.2	loaf	1.65	1.69	1.68	1.66	1.68	1.68
Corned Beef (a)	15.9	12 oz	8.20	8.22	8.22	8.13	8.15	8.15
Taro	15.2	kg	1.96	1.78	1.65	2.92	2.66	2.66
Re-packed medium grain rice	13.4	kg	3.11	3.14	3.19	3.14	3.23	3.21
Prepacked medium grain rice (a)	13.4	907g	3.13	3.05	3.05	3.05	3.08	3.08
Canned fish between \$3.00 and \$3.99 Natural Oil	12.7	15 oz	3.46	3.48	3.47	3.47	3.45	3.45
Bongo	10.2	20grms	0.81	0.83	0.83	0.84	0.84	0.82
Keke Saina Biscuits (a)	9.2	pkt 10	6.28	6.40	6.48	6.58	6.50	6.50
Tip Top Ice Cream (a)	9.2	2 ltr	15.03	15.03	15.03	15.32	15.07	15.07
Ramen maggie	9.0	85gms	1.13	1.14	1.14	1.11	1.10	1.10
Fish (Piece)	7.9	kg	15.43	15.86	15.02	19.43	21.92	18.21
Butter Anchor	7.7	454g	12.81	13.59	13.64	13.46	13.46	13.46
Round Pancake (a)	7.5	sml	0.15	0.15	0.15	0.15	0.15	0.15
Mutton Flaps	6.6	kg	20.55	20.27	21.15	22.10	22.01	21.92
Canned fish \$4:00 or over N/Oil	6.4	15 oz	4.98	4.77	4.77	4.83	4.78	4.75
Canned fish under \$3.00 in N/Oil	6.4	15 oz	2.58	2.50	2.52	2.82	2.83	2.78
Wings Turkey	6.3	kg	4.69	6.74	6.88	6.04	6.36	6.15
Fish (string)	6.0	kg	9.01	8.60	7.95	10.66	11.75	9.81
Fish (large)	6.0	kg	16.65	15.83	15.55	17.93	16.28	16.28
<b>02 Alcoholic beverages, tobacco and narcotics</b>								
Lager Beer	37.9	355 mls	3.43	3.43	3.43	3.56	3.55	3.54
Pall Mall Filter Cigarettes (Red)	24.3	20 rolls	12.20	12.20	12.20	13.00	13.00	13.00
Pall Mall Menthol Cigarettes (Green)	24.3	20 rolls	12.20	12.20	12.20	13.00	13.00	13.00
Beer (a)	16.3	330 mls	3.28	3.28	3.31	3.35	3.35	3.35
Winfield Tobacco (a)	12.6	packet	15.00	15.00	15.00	15.00	15.00	15.00
<b>03 Clothing and footwear</b>								
Uniform le Faitaga College boys	4.3	size 8-10	32.33	32.33	32.33	31.33	31.33	31.33
Uniform Pa'ave (a)	3.7	size 7	32.33	32.67	32.67	32.67	34.33	34.67
<b>04 Housing, water, electricity, gas and other fuels</b>								
Electricity / Cashpower / kw h 1- 100 / total cost per u	50.6	kw h	0.70	0.63	0.71	0.67	0.70	0.58
Reservoir treated Water	28.5	15-40 m3	1.40	1.40	1.40	1.40	1.40	1.40
Liquid gas	15.8	9kg	59.50	59.50	59.50	61.00	62.00	62.00
Government house Rent	12.2	2 b/room	650.00	650.00	650.00	650.00	650.00	650.00

---

**05 Furnishings, household equipment and routine household maintenance**

Washing powder (a)	6.3	200g	1.84	1.84	1.84	1.81	1.79	1.79
Soap yellow Washing soap	5.9	bar	2.84	2.81	2.92	2.88	2.85	2.85
Mosquito coil	4.4	10 coil	1.28	1.28	1.28	1.25	1.28	1.28

**06 Health**

Amoxicillin mg Tablets (a)	2.5	500 mg	6.83	6.83	6.83	7.53	7.53	7.53
Hospital Charge	1.1	night	22.50	22.50	22.50	22.50	22.50	22.50

**07 Transport**

Petrol	60.8	1 ltr	2.37	2.47	2.53	2.85	2.88	2.97
Taxi Fare PO Motootua Hosp	8.2	per trip	4.80	4.80	4.80	4.80	4.80	4.80
Taxi Fares PO Malua	8.2	per trip	31.30	31.30	31.30	31.30	31.30	31.30
Taxi Fares PO Falefa	8.2	per trip	43.20	43.20	43.20	43.20	43.20	43.20
Air Fares Fagalii Pago Fagalii	6.8	return trip	380.00	380.00	380.00	395.00	395.00	395.00
Air Fares Apia Auckland Apia	6.8	1 month	1219.35	1533.83	1380.10	1288.90	1640.47	1271.10

**08 Communication**

Calling per minute Rate cell phone (a)	10.02	per minute	0.45	0.45	0.45	0.45	0.45	0.45
Internet data bundles per mb Rate (a)	10.02	per mb	0.25	0.25	0.25	0.25	0.25	0.25
Calling per minute Rate cell phone (a)	10.02	per minute	0.44	0.44	0.44	0.44	0.44	0.44
Internet data bundles per mb Rate (a)	10.02	per mb	0.20	0.20	0.20	0.20	0.20	0.20

**09 Recreation and culture**

Television (a)	2.30	LCD	1007.83	1007.83	1007.83	968.83	1010.67	1010.67
Exercise Book w arwick	1.44	1B4 64 pa	1.37	1.37	1.37	1.37	1.45	1.37
Laptop (a)	1.33	each	2808.60	2808.60	2808.60	2998.60	2878.60	2842.00

**10 Education**

Fees PTA Primary Y Urban Registration fees (a)	7.23	Year 6	62.50	62.50	62.50	82.50	82.50	82.50
Fees PTA Secondary Y Urban Registration fees (a)	5.11	Year 10	50.00	50.00	50.00	52.00	52.00	52.00
Fees Tertiary NUS registration School Fees	3.79	registratio	292.00	292.00	292.00	320.00	320.00	320.00
Fees Secondary Y Examination Fees (a)	3.61	Y12-13	25.50	25.50	25.50	25.50	25.50	25.50

**11 Restaurants and hotels**

Fish & Chip Meal	7.79	1 serve	9.08	9.17	9.17	9.17	9.17	9.17
Curry & Chopsuey Meal	4.87	1 serve	3.00	3.00	3.00	3.00	3.00	3.33
Chicken & Chips Meal (a)	4.87	1 serve	9.36	9.36	9.36	9.36	9.36	9.36
Steam rice & chicken Meal (a)	4.87	1 serve	4.83	4.83	4.83	4.83	4.83	4.83

**12 Miscellaneous goods and services**

Paper Sofan deluxe ply Toilet Paper	8.52	250 sheet:	0.95	0.98	0.98	1.01	1.01	1.01
Hair Gel	4.59	1124ml	4.84	4.84	4.81	4.34	4.34	4.36
Remains price for Storage of remains (a)	4.41	per day	60.00	60.00	60.00	60.00	60.00	60.00
Basic Casket (a)	4.41	each	1966.67	1966.67	1966.67	1966.67	1966.67	1966.67
Standard Embalming (a)	4.41	1 person	1500.00	1500.00	1500.00	1500.00	1500.00	1500.00
Toilet soap (a)	4.38	90g	1.83	1.85	1.83	1.85	1.85	1.85
Diapers (a)	4.19	5kg-10kg	10.04	10.04	10.04	9.36	9.36	9.36

Source : Samoa Bureau Statistics

(a) : New commodity from February 2016

(P) : Provisional figures

Note : Please note unit of conversion was in pound's (lb's) but been converted into kilograms (kg)

**Table 4. IMPORTED GOODS COMPONENT OF THE CONSUMER PRICE INDEX**  
(Base Period : Average Prices February 2016 = 100)

Group	All Items	Food and Non Alcoholic Beverages	Alcoholic Beverages, Tobacco and Narcotics	Clothing and Footwear	Housing, Water, Electricity, Gas and other Fuels	Furnishings, Household Equipment and Maintenance	Health	Transport	Communication	Recreation and Culture	Education	Restaurants	Miscellaneous goods and services
<i>Weights</i>	<b>494.7</b>	<b>269.1</b>	<b>23.8</b>	<b>15.2</b>	<b>28.3</b>	<b>26.9</b>	<b>2.5</b>	<b>88.6</b>	<i>n.a</i>	<b>5.6</b>	<i>n.a</i>	<i>n.a</i>	<b>34.7</b>
Ave - 2015	104.5	104.5	103.0	99.5	104.5	99.1	100.5	114.0		96.8			99.2
Ave - 2016	102.5	103.9	105.1	98.8	98.7	99.3	98.5	101.8		95.0			100.7
Ave - 2017	107.3	110.1	110.0	97.0	97.6	98.9	91.7	111.2		90.0			97.1
2017													
November	111.3	115.9	110.5	96.7	97.5	98.8	91.1	115.7		91.4			96.5
December	110.9	115.0	110.5	96.5	97.6	98.0	91.1	116.3		91.4			96.4
2018													
January	110.3	112.1	110.5	96.9	98.7	98.0	91.1	121.6		91.0			96.3
February	110.0	111.8	110.3	95.5	99.9	98.4	91.1	120.5		92.4			96.4
March	108.8	109.5	110.7	95.4	99.8	98.8	91.1	121.2		92.4			95.4
April	108.4	109.4	110.7	95.5	99.2	98.5	91.1	119.3		92.7			96.3
May	111.6	114.3	114.9	95.6	99.3	98.1	91.1	120.7		92.7			96.8
June	115.5	120.5	115.0	95.6	100.6	96.9	91.1	123.8		92.7			96.5
July	115.6	119.4	115.0	95.5	101.0	97.2	97.1	127.2		92.7			97.2
August	114.7	118.8	115.0	95.5	100.1	96.7	97.1	124.5		91.3			97.1
September	113.9	116.6	115.0	95.5	100.9	97.9	97.1	126.2		91.4			96.8
October	113.8	116.2	115.0	97.0	101.9	97.5	97.1	126.5		93.3			96.9
November (P)	111.7	111.1	115.0	97.2	103.0	97.2	97.1	129.6		91.7			96.9
<b><u>Percentage Change (P)</u></b>													
Nov 2018 over Oct 2018	-1.9%	-4.3%	0.0%	0.2%	1.1%	-0.3%	0.0%	2.5%		-1.7%			0.0%
Nov 2018 over Nov 2017	0.4%	-4.1%	4.1%	0.5%	5.7%	-1.5%	6.6%	12.0%		0.4%			0.4%

Source : Samoa Bureau Statistics

(P) : Provisional figures

Note : n.a. Not applicable



**Table 5. IMPORTED ITEMS UNDERLYING INDEX**

**(Base Period : Average Prices February 2016 = 100)**

Group	All Items	Food and Non Alcoholic Beverages	Alcoholic Beverages, Tobacco and Narcotics	Clothing and Footwear	Housing, Water , Electricity, Gas and other Fuels	Furnishings, Household Equipment and Maintenance	Health	Transport	Communication	Recreation and Culture	Education	Restaurants	Miscellaneous goods and services
<b>Weights</b>	<b>401.2</b>	<b>269.1</b>	<b>n.a</b>	<b>15.2</b>	<b>24.2</b>	<b>26.9</b>	<b>2.5</b>	<b>23.0</b>	<b>n.a</b>	<b>5.6</b>	<b>n.a</b>	<b>n.a</b>	<b>34.7</b>
Ave - 2015	103.4	104.5		99.5	102.0	99.1	100.5	105.9		96.8			99.2
Ave - 2016	102.4	103.9		98.8	97.5	99.3	98.5	100.1		95.0			100.7
Ave - 2017	106.0	110.1		97.0	93.8	98.9	91.7	104.5		90.0			97.1
2017													
November	110.3	115.9		96.7	92.8	98.8	91.1	112.8		91.4			96.5
December	109.5	115.0		96.5	92.6	98.0	91.1	111.1		91.4			96.4
2018													
January	107.7	112.1		96.9	92.5	98.0	91.1	113.3		91.0			96.3
February	107.5	111.8		95.5	94.1	98.4	91.1	112.6		92.4			96.4
March	105.9	109.5		95.4	93.3	98.8	91.1	112.6		92.4			95.4
April	105.9	109.4		95.5	92.9	98.5	91.1	113.1		92.7			96.3
May	109.2	114.3		95.6	93.1	98.1	91.1	113.1		92.7			96.8
June	113.2	120.5		95.6	93.3	96.9	91.1	112.9		92.7			96.5
July	112.6	119.4		95.5	93.2	97.2	97.1	111.7		92.7			97.2
August	112.0	118.8		95.5	92.6	96.7	97.1	111.7		91.3			97.1
September	110.6	116.6		95.5	92.9	97.9	97.1	110.1		91.4			96.8
October	110.3	116.2		97.0	94.0	97.5	97.1	107.5		93.3			96.9
November (P)	106.9	111.1		97.2	94.5	97.2	97.1	107.7		91.7			96.9
<b><u>Percentage Change (P)</u></b>													
Nov 2018 over Oct 2018	-3.1%	-4.3%		0.2%	0.6%	-0.3%	0.0%	0.2%		-1.7%			0.0%
Nov 2018 over Nov 2017	-3.1%	-4.1%		0.5%	1.9%	-1.5%	6.6%	-4.5%		0.4%			0.4%

Source : Samoa Bureau Statistics

(P) : Provisional figures

Note : n.a. Not applicable

**Table 6. LOCAL GOODS COMPONENT OF THE CONSUMER PRICE INDEX**  
(Base Period : Average Prices February 2016 = 100)

Group	All Items	Food and Non Alcoholic Beverages	Alcoholic Beverages, Tobacco and Narcotics	Clothing and Footwear	Housing, Water, Electricity, Gas and other Fuels	Furnishings, Household Equipment and Maintenance	Health	Transport	Communication	Recreation and Culture	Education	Restaurants	Miscellaneous goods and services
<b>Weights</b>	<b>505.3</b>	<b>134.6</b>	<b>104.6</b>	<b>6.0</b>	<b>91.3</b>	<b>3.9</b>	<b>2.2</b>	<b>59.9</b>	<b>51.5</b>	<b>0.4</b>	<b>19.7</b>	<b>22.4</b>	<b>8.8</b>
Ave - 2015	96.9	92.0	96.7	97.6	106.4	101.3	98.2	104.9	100.0	100.0	100.0	98.7	
Ave - 2016	99.7	102.5	102.3	98.6	90.7	100.0	100.0	100.5	100.0	100.0	101.1	99.3	
Ave - 2017	98.6	95.0	107.1	95.7	90.6	100.1	100.0	101.6	101.2	100.0	97.9	98.3	102.3
2017													
November	98.8	92.2	108.3	93.1	93.8	100.3	100.0	101.2	103.4	100.0	97.8	98.6	102.3
December	99.2	95.0	108.3	93.8	91.3	100.3	100.0	102.2	103.4	100.0	97.8	98.6	102.3
2018													
January	101.3	101.6	110.3	92.6	91.3	100.3	100.0	101.5	103.4	100.0	97.8	98.6	102.3
February	100.7	101.0	110.7	92.8	88.1	100.3	100.0	97.7	103.4	100.0	111.6	98.6	102.3
March	100.6	101.2	110.9	92.8	86.2	100.3	100.0	98.3	103.4	100.0	111.6	98.6	102.3
April	102.3	104.9	111.1	93.7	88.1	100.3	100.0	100.8	103.4	100.0	111.6	98.6	102.3
May	103.2	107.8	112.0	93.7	86.8	100.3	100.0	103.1	103.4	100.0	111.6	98.6	102.3
June	101.8	104.9	111.4	93.7	84.3	100.3	100.0	102.4	103.4	100.0	111.6	98.6	102.3
July	103.9	111.3	111.3	93.7	86.2	100.3	100.0	102.8	103.4	100.0	111.6	98.6	102.3
August	104.2	109.2	112.8	93.6	90.6	100.3	100.0	100.8	103.4	100.0	111.6	98.6	102.3
September	103.6	106.1	113.3	93.0	91.3	100.3	100.0	101.1	103.4	100.0	111.6	98.6	102.3
October	104.1	104.9	113.5	93.6	93.2	100.3	100.0	104.1	103.4	100.0	111.6	98.6	102.3
November (P)	101.5	101.9	113.3	93.5	85.5	100.3	100.0	100.2	103.4	100.0	111.6	100.6	102.3
<b><u>Percentage Change (P)</u></b>													
Nov 2018 over Oct 2018	-2.5%	-2.9%	-0.1%	0.0%	-8.2%	0.0%	0.0%	-3.7%	0.0%	0.0%	0.0%	2.0%	0.0%
Nov 2018 over Nov 2017	2.7%	10.4%	4.7%	0.5%	-8.8%	0.0%	0.0%	-1.0%	0.0%	0.0%	14.1%	2.0%	0.0%

Source : Samoa Bureau Statistics

(P) : Provisional figures

Note : n.a. Not applicable

**Table 7. LOCAL ITEMS UNDERLYING INDEX**

(Base Period : Average Prices February 2016 = 100)

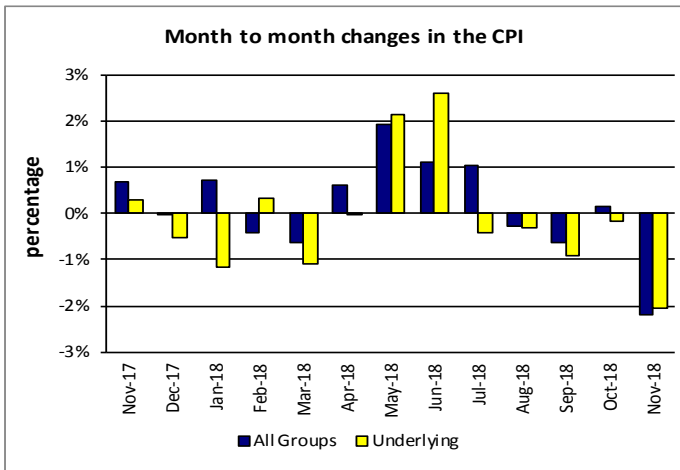
Group	All Items	Food and Non Alcoholic Beverages	Alcoholic Beverages, Tobacco and Narcotics	Clothing and Footwear	Housing, Water, Electricity, Gas and other Fuels	Furnishings, Household Equipment and Maintenance	Health	Transport	Communication	Recreation and Culture	Education	Restaurants	Miscellaneous goods and services
<b>Weights</b>	<b>185.5</b>	<b>76.1</b>	<b>n.a</b>	<b>6.0</b>	<b>n.a</b>	<b>3.9</b>	<b>1.0</b>	<b>3.4</b>	<b>51.5</b>	<b>n.a</b>	<b>12.3</b>	<b>22.4</b>	<b>8.8</b>
Ave - 2015	99.9	100.3		97.6	98.8	101.3	91.7	100.0		100.0		98.7	
Ave - 2016	100.3	100.6		98.6		100.0	100.0	101.0				99.3	
Ave - 2017	99.9	100.1		95.7		100.1	100.0	101.8	101.2		96.7	98.3	102.3
2017													
November	100.6	100.3		93.1		100.3	100.0	101.8	103.4		96.5	98.6	102.3
December	100.5	100.1		93.8		100.3	100.0	101.8	103.4		96.5	98.6	102.3
2018													
January	100.6	100.2		92.6		100.3	100.0	105.7	103.4		96.5	98.6	102.3
February	102.0	100.4		92.8		100.3	100.0	108.6	103.4		115.6	98.6	102.3
March	102.0	100.3		92.8		100.3	100.0	108.6	103.4		115.6	98.6	102.3
April	101.9	100.0		93.7		100.3	100.0	108.6	103.4		115.6	98.6	102.3
May	101.8	99.8		93.7		100.3	100.0	108.6	103.4		115.6	98.6	102.3
June	102.0	100.2		93.7		100.3	100.0	108.6	103.4		115.6	98.6	102.3
July	101.9	100.0		93.7		100.3	100.0	108.6	103.4		115.6	98.6	102.3
August	101.9	100.2		93.6		100.3	100.0	108.6	103.4		115.6	98.6	102.3
September	102.0	100.3		93.0		100.3	100.0	108.6	103.4		115.6	98.6	102.3
October	102.0	100.4		93.6		100.3	100.0	108.6	103.4		115.6	98.6	102.3
November (P)	102.4	100.7		93.5		100.3	100.0	108.6	103.4		115.6	100.6	102.3
<b><u>Percentage Change (P)</u></b>													
Nov 2018 over Oct 2018	0.3%	0.3%		0.0%		0.0%	0.0%	0.0%	0.0%		0.0%	2.0%	0.0%
Nov 2018 over Nov 2017	1.8%	0.3%		0.5%		0.0%	0.0%	6.7%	0.0%		19.7%	2.0%	0.0%

Source : Samoa Bureau Statistics

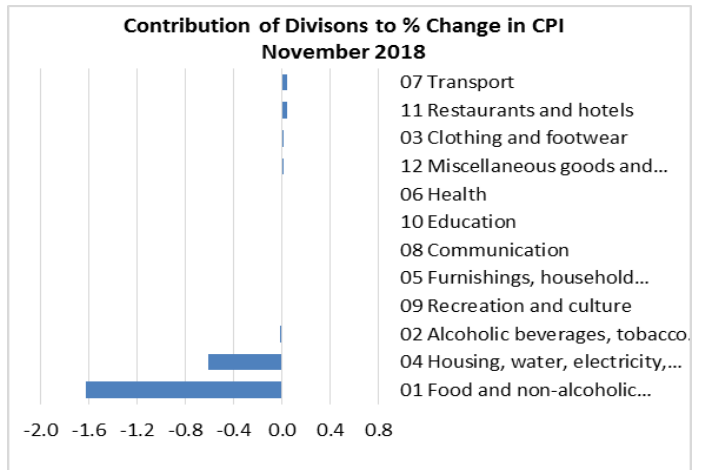
(P) : Provisional figures

Note : n.a. Not applicable

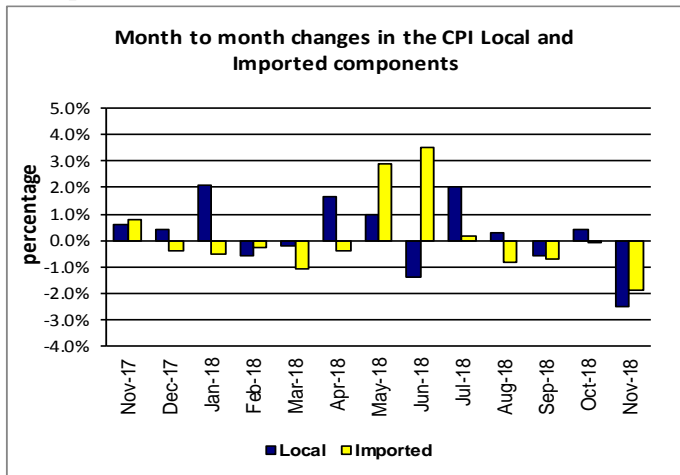
**Graph.5**



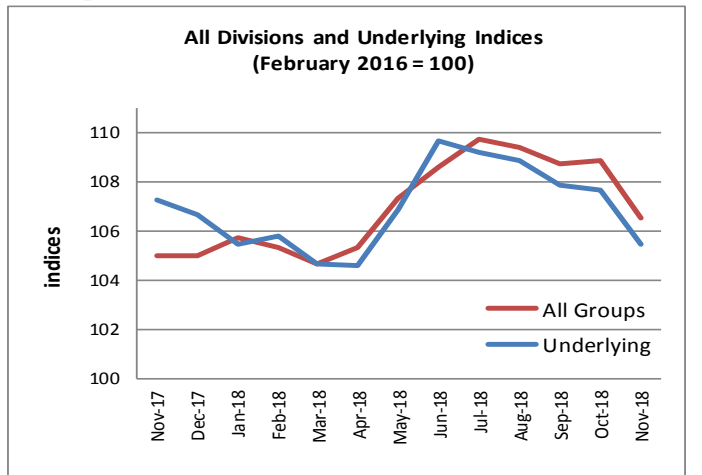
**Graph.6**



**Graph.7**



**Graph.8**



**Graph.9**

