

Please address all correspondence
To Government Statistician
In reply, please quote the file reference



File Ref: CPI 5/16

GOVERNMENT OF SAMOA

SAMOA BUREAU OF STATISTICS

CONSUMER PRICE INDEX May 2016

This is the first release on the February 2016 base, and includes updated weights. See attached tables for details

Key findings:

The Consumer Price Index for May 2016 increased by 0.7 percent compared to the previous month.

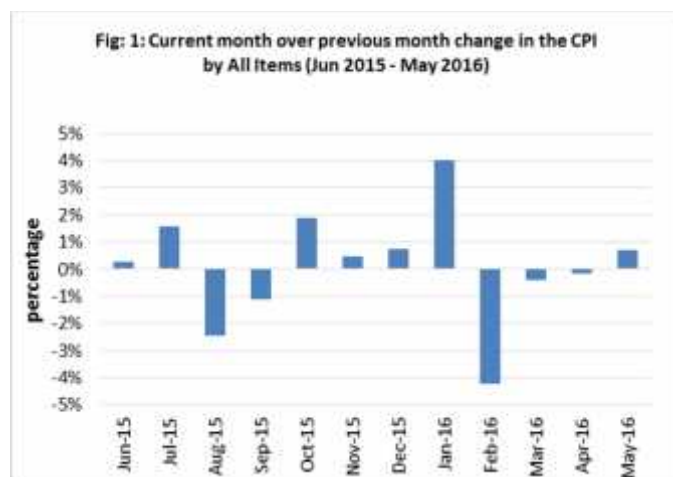
- Transport index increased by 5.0 percent, mainly due to higher prices for airline fare and fuel.
- Recreation and Culture also increased by 3.9 percent.
- The Average Annual Inflation for the year ended May 2016 down by 0.1 percent.

In the year to May 2016, the CPI rose 1.1 percent.

SUMMARY

The Consumer Price Index for May 2016 was 0.7 percent higher than April 2016, and was 1.1 percent higher than May 2015.

The Imported Goods Component registered an increase of 0.9 percent, while Local Component also recorded an increase of 0.6 percent from the previous month. Figure 1 shows the month to month percentage changes in the Consumer Price Index by all Divisions from May 2015 to May 2016.

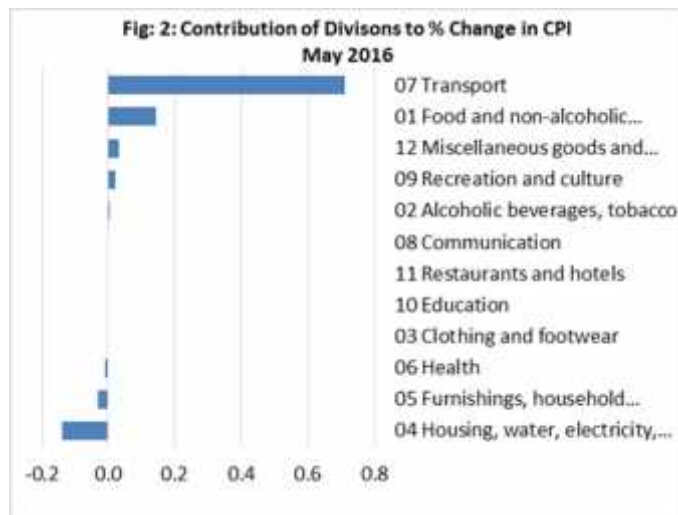


Source : Samoa Bureau of Statistics

Total All Divisions Contribution

Transport divisions along with Food and Non Alcoholic Beverages were the main contributors to the overall increase of 0.7 percent in the All Division Consumer Price Index.

On the other hand, there were offsetting negative contributions from Housing, Water, Electricity, Gas and other Fuels division with 0.14 and Furnishing, Household Equipment and Maintenance division with 0.03 percent decreases.



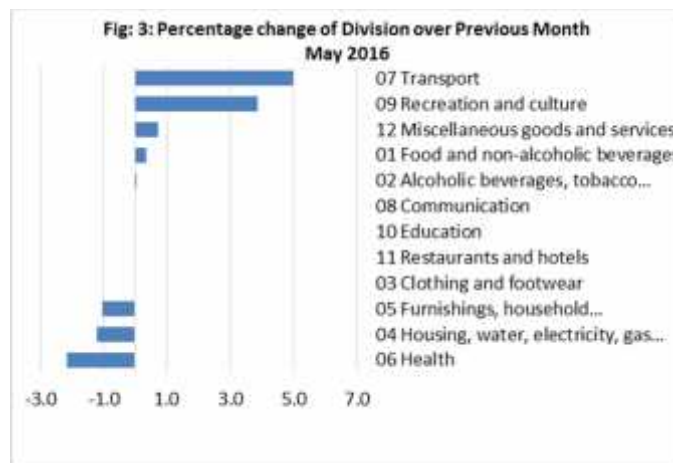
Source : Samoa Bureau of Statistics

Consumer Price Index (% Change)

The Transport index recorded an increase of 5.0 percent. Recreation and Culture showed an increase of 3.9 percent, while Miscellaneous good and services and Food and Non Alcoholic Beverages indices both registered increases of 0.7 and 0.3 percent respectively.

On the other hand, decreases were recorded for Health with 2.2 percent, Housing, Water, Electricity, Gas and other Fuels with 1.2 percent and Furnishing, Household Equipment and Maintenance with 1.0 percent.

No changes were recorded for the Alcoholic Beverages, Tobacco and Narcotics, Clothing and Footwear, Communication, Education and Restaurants indices. Graphically presented in Fig 3 is the May 2016 percentage change for all divisions from April 2016.



Source : Samoa Bureau of Statistics

Imported Goods Component

The Imported Goods Component of the Consumer Price Index registered an increase of 0.9 percent when compared to the previous month. This increase was mainly due to higher prices recorded for fuel (petrol, diesel and kerosene).

Local Goods Component

Increased prices recorded for airline fare (Apia-Auckland-Apia) have resulted in the 0.6 percent increase in the Local Good Component.

Transport Index

Higher prices recorded for fuel (petrol and diesel) and airline fare (Apia-Auckland-Apia) is reflected in the 5.0 percent increase in the Transport Index.

Recreation and Culture Index

The Recreation and Culture Index recorded an increase of 3.9 percent higher due to the rise in prices recorded for LCD television and laptop.

Miscellaneous Goods and Services Index

Increased prices recorded for toilet paper and hair gel is reflected in the 0.7 percent increase in the Miscellaneous Good and Services index.

Health Index

Decreased prices recorded for amoxicillin is resulted in the 2.2 percent decrease in the Health index.

Housing, Water, Electricity, Gas and other Fuels Index

The 1.2 percent decrease in the Housing, Water, Electricity, Gas and other Fuels Index was a result of the lower prices recorded for electricity (kwh).

Furnishings, Household Equipment, and Maintenance Index

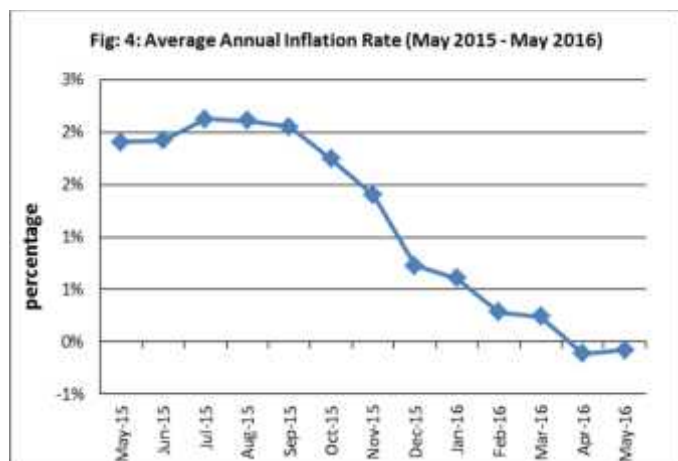
Lower prices recorded for mosquito coil is resulted in the 1.0 percent decrease in the Furnishing, Household Equipment and Maintenance index.

Underlying Indices ^{1/}

The All Items Underlying Index for May 2016 registered a decrease of 0.2 percent when compared to April 2016, and a decrease of 2.0 percent when compared to May 2015. The Imported Items Underlying Index registered a decrease of 0.2 percent, while Local Items Underlying Index recorded no change from the previous month.

Inflation Rate

The average annual inflation rate for the year ended May 2016 was fell by 0.1 percent. For the twelve months ending May 2015 the inflation rate was 1.9 percent. Presented in Fig 4 is the Average annual inflation rate (Jun 2015 - May 2016).



Source : Samoa Bureau of Statistics

The attached Tables and Graphs provide the user with more detailed analysis

Technical Notes:

The Consumer Price (CPI) measures the rate of inflation for Samoa. It is designed to measure the change in prices for the goods purchased by households in Samoa. The CPI measures the change in prices by comparing the prices for a basket of goods and services at the collection period with the price for the same goods in a base period.

The basket of goods that is priced is based on the average expenditures of households as recorded in the Household Income and Expenditure Survey (HIES). The HIES survey identifies how much households spend on different items. The more households spend on an item on average, the more important it is to the price index, and the higher the weight in the index.

^{1/} Monthly movements in the 'headline' CPI series can be volatile. This volatility reflects price changes in particular items that may be due, among other factors, to fluctuations in commodity markets and agricultural conditions, policy changes, or seasonal or infrequent price resetting.

Underlying inflation is a measure of inflation that excludes certain items that face volatile price movements. Underlying inflation eliminates products that can have temporary price shocks because these shocks can diverge from the overall trend of inflation and give a false measure of inflation.

SAMOA BUREAU OF STATISTICS

*Economic Statistics Division
FMFM II Building, Level 1
P O Box 1151
Apia, Samoa*

*Phone: (685) 62014/62015
Fax: (685) 24675
E-mail: info.stats@sbs.gov.ws
Website: www.sbs.gov.ws*

Date of release: 14th June 2016.

The next Consumer Price Index will be released on 11th July 2016.


Muagututi'a S Reupena.
GOVERNMENT STATISTICIAN

Table 1. CONSUMER PRICE INDEX.
(Base Period : Average Prices February 2016 = 100)

Group	All Items	Food and Non Alcoholic Beverages	Alcoholic Beverages, Tobacco and Narcotics	Clothing and Footwear	Housing, Water, Electricity, Gas and other Fuels	Furnishings, Household Equipment, and Maintenance	Health	Transport	Communication	Recreation and Culture	Education	Restaurants	Miscellaneous goods and services
Weights	1000.0	403.7	128.4	21.2	119.6	30.8	4.6	148.5	51.5	6.1	19.7	22.4	43.5
Ave - 2013	99.5	98.1	93.2	95.3	110.6	100.1	86.3	110.4	100.1	99.3	98.3	85.6	104.3
Ave - 2014	99.1	94.8	96.1	98.9	114.3	98.9	97.3	115.8	100.1	99.7	98.3	92.2	101.9
Ave - 2015	99.8	97.9	97.7	98.6	106.0	99.7	99.9	108.7	100.0	99.9	100.0	98.7	99.2
2015													
May	99.1	95.3	96.8	100.3	111.6	98.9	100.2	112.0	100.1	99.9	100.0	100.0	98.9
June	99.4	97.4	97.7	100.0	100.8	99.6	100.7	110.0	100.1	99.9	100.0	100.0	98.5
July	100.9	99.2	96.3	100.1	104.3	99.8	100.0	115.3	100.1	99.9	100.0	100.0	98.5
August	98.4	96.4	95.6	99.7	97.8	100.7	100.0	110.3	99.9	100.0	100.0	100.0	99.0
September	97.3	93.5	98.1	99.0	97.7	100.7	100.0	112.1	99.9	100.0	100.0	100.0	99.0
October	99.2	96.7	98.1	98.2	104.6	100.6	100.0	108.5	99.9	100.0	100.0	100.0	99.3
November	99.6	98.3	99.2	99.1	104.9	99.9	100.0	103.4	99.9	100.0	100.0	100.0	99.5
December	100.4	101.2	99.2	98.7	94.8	100.2	100.0	102.2	99.9	100.0	100.0	100.0	99.4
2016													
January	104.4	106.9	100.2	98.9	103.7	100.1	100.0	105.3	100.0	100.0	100.0	100.0	101.6
February	100.0	100.0	100.0	100.0	100.0	100.0	100.0	100.0	100.0	100.0	100.0	100.0	100.0
March	99.6	100.6	99.7	99.7	96.7	100.1	100.2	98.7	100.0	100.0	100.0	100.0	99.9
April	99.5	101.8	99.8	99.9	95.8	99.5	100.2	95.1	100.0	96.3	100.0	100.0	100.5
May (P)	100.2	102.2	99.8	99.8	94.7	98.4	98.0	99.8	100.0	100.0	100.0	100.0	101.2
Percentage Change (P)													
May 2016 over April 2016	0.7%	0.3%	0.0%	0.0%	-1.2%	-1.0%	-2.2%	5.0%	0.0%	3.9%	0.0%	0.0%	0.7%
May 2016 over May 2015	1.1%	7.2%	3.1%	-0.4%	-15.2%	-0.5%	-2.2%	-10.8%	-0.1%	0.1%	0.0%	0.0%	2.4%
ALL ITEMS UNDERLYING INDEX													
Group	All Items	Food and Non Alcoholic Beverages	Alcoholic Beverages, Tobacco and Narcotics	Clothing and Footwear	Housing, Water, Electricity, Gas and other Fuels	Furnishings, Household Equipment, and Maintenance	Health	Transport	Communication	Recreation and Culture	Education	Restaurants	Miscellaneous goods and services
Weights	586.7	345.3	n.a	21.2	24.2	30.8	3.5	26.4	51.5	5.6	12.3	22.4	43.5
Ave - 2013	103.8	105.9		95.3	101.9	100.0	97.6	104.8		94.7		85.6	104.3
Ave - 2014	105.0	107.3		98.9	102.2	98.9	96.5	102.9		95.4		92.1	102.0
Ave - 2015	102.5	103.5		98.7	101.7	99.7	99.8	101.9		98.3		98.7	99.2
2015													
May	102.5	103.4		100.3	101.6	98.9	100.2	105.0		97.4		100.0	98.9
June	102.2	103.0		100.1	101.5	99.6	101.0	102.1		97.4		100.0	98.6
July	101.2	101.8		100.1	101.7	99.8	99.9	100.0		97.4		100.0	98.6
August	100.6	100.8		99.8	101.9	100.7	100.0	100.0		100.0		100.0	99.0
September	100.5	0.0		99.1	102.2	100.7	100.0	100.0		100.0		100.0	99.0
October	101.2	101.8		98.2	101.0	100.6	100.0	100.0		100.0		100.0	99.2
November	101.0	101.5		99.1	101.6	99.9	100.0	100.0		100.0		100.0	99.5
December	100.7	100.9		98.8	101.5	100.1	100.0	100.0		100.0		100.0	99.4
2016													
January	100.6	100.7		99.0	101.0	100.1	100.0	100.0		100.0		100.0	101.5
February	100.0	100.0		100.0	100.0	100.0	100.0	100.0	100.0	100.0	100.0	100.0	100.0
March	100.2	100.5		99.7	97.4	100.1	100.3	100.0	100.0	100.0	100.0	100.0	99.9
April	100.6	101.3		99.9	97.5	99.5	100.3	100.0	100.0	96.0	100.0	100.0	100.5
May (P)	100.5	101.0		99.8	97.6	98.4	97.4	100.0	100.0	100.0	100.0	100.0	101.2
Percentage Change (P)													
May 2016 over Apr 2016	-0.2%	-0.3%		0.0%	0.1%	-1.0%	-2.9%	0.0%	0.0%	4.2%	0.0%	0.0%	0.7%
May 2016 over May 2015	-2.0%	-2.3%		-0.5%	-3.9%	-0.5%	-2.9%	-4.8%	n.a	2.6%	n.a	0.0%	2.4%

Source : Samoa Bureau Statistics
(P): Provisional figures
Note: n.a. Not applicable

Table 2. AVERAGE RETAIL PRICES OF SELECTED COMMODITIES

Commodities	Wt	Unit	2015			2016		
			Mar	Apr	May	Mar	Apr	May (P)
01 Food and non-alcoholic beverages								
Leg Quarters Chicken	62.2	lb	2.20	2.20	2.20	1.29	1.35	1.34
Raw Sugar	21.3	1 lb	1.11	1.11	1.12	1.21	1.22	1.21
Bread	17.2	loaf	1.70	1.70	1.70	1.78	1.78	1.78
Corned Beef (a)	15.9	12 oz				8.57	8.62	8.58
Taro	15.2	1 lb	0.97	0.88	0.88	1.02	1.14	1.26
Re-packed medium grain rice	13.4	1 lb	1.53	1.51	1.58	1.60	1.61	1.60
Prepacked medium grain rice (a)	13.4	2 lb				3.41	3.50	3.57
Bongo	10.2	20grms	0.60	0.60	0.60	0.81	0.81	0.81
Keke Saina Biscuits (a)	9.2	pkt 10				5.84	5.84	5.84
Tip Top Ice Cream (a)	9.2	2 ltr				14.92	14.87	14.87
Ramen maggie	9.0	85gms	1.00	1.00	1.10	1.10	1.11	1.11
Fish (Piece)	7.9	lb	7.44	7.73	6.63	7.12	6.87	5.59
Butter Anchor	7.7	1lb	12.50	12.50	12.00	11.71	11.71	11.71
Round Pancake (a)	7.5	sml				0.15	0.15	0.15
Mutton Flaps	6.6	lb	9.20	9.90	9.90	6.63	6.90	6.69
Canned fish \$4:00 or over N/Oil	6.4	15 oz	4.30	4.38	4.48	4.46	4.52	4.50
Canned fish between \$3.00 and \$3.99 in N/Oi	6.4	15 oz	2.90	2.90	2.90	3.42	3.37	3.31
Canned fish between \$3.00 and \$3.99 in N/Oi	6.4	15 oz	3.23	3.23	3.13	3.15	3.14	3.20
Canned fish under \$3.00 in N/Oil	6.4	15 oz	2.60	2.70	2.70	2.75	2.70	2.73
Wings Turkey	6.3	lb	3.90	3.90	3.90	3.06	2.74	2.74
Fish (string)	6.0	lb	4.15	4.51	3.96	4.12	4.06	4.07
Fish (large)	6.0	lb	7.05	6.48	6.88	6.79	6.62	7.65
02 Alcoholic beverages, tobacco and narcotics								
Lager Beer	37.9	355 mls	3.23	3.23	3.23	3.41	3.40	3.39
Pall Mall Filter Cigarettes (Red)	24.3	20 rolls	10.00	10.00	10.00	10.50	10.50	10.50
Pall Mall Menthol Cigarettes (Green)	24.3	20 rolls	10.00	10.00	10.00	10.50	10.50	10.50
Beer (a)	16.3	330 mls				3.18	3.18	3.20
Winfield Tobacco (a)	12.6	packet				12.90	12.90	12.90
03 Clothing and footwear								
Uniform le Faitaga College boys	4.3	size 8-10	34.00	34.00	34.00	33.00	33.00	33.00
Uniform Pa'ave (a)	3.7	size 7				33.67	33.67	33.67
04 Housing, water, electricity, gas and other fuels								
Electricity	50.6	kwh	1.00	1.00	0.87	0.82	0.80	0.77
Reservoir treated Water	28.5	15-40 m3	1.40	1.40	1.40	1.40	1.40	1.40
Liquid gas	15.8	20 lb	69.00	69.00	65.50	63.00	63.00	63.00
Government house Rent	12.2	2 b/room	500.00	500.00	500.00	500.00	500.00	500.00
05 Furnishings, household equipment and routine household maintenance								
Washing powder (a)	6.3	200g				1.82	1.82	1.82
Soap yellow Washing soap	5.9	bar	3.00	3.00	3.00	2.89	2.89	2.89
Mosquito coil	4.4	12 coil	1.20	1.20	1.20	1.40	1.40	1.30

06 Health

Amoxicillan mg Tablets (a)	2.5	500 mg				7.62	7.62	7.28
Hospital Charge	1.1	night	10.00	10.00	10.00	22.50	22.50	22.50

07 Transport

Petro	60.8	1 ltr	2.16	2.39	2.51	2.07	1.96	2.13
Taxi Fare PO Motootua Hosp	8.2	per trip	4.80	4.80	4.80	4.80	4.80	4.80
Taxi Fares Po Malua	8.2	per trip	31.30	31.30	31.30	31.30	31.30	31.30
Taxi Fares PO Falefa	8.2	per trip	43.20	43.20	43.20	43.20	43.20	43.20
Air Fares Fagalii Pago Fagalii	6.8	return trip	395.00	395.00	395.00	395.00	395.00	395.00
Air Fares Apia Auckland Apia	6.8	1 month	1160.90	1838.20	2705.00	1719.50	1121.50	1497.82

08 Communication

Calling per minute Rate cell phone (a)	10.02	per minute				0.45	0.45	0.45
Internet data bundles per mb Rate (a)	10.02	per mb				0.20	0.20	0.20
Calling per minute Rate cell phone (a)	10.02	per minute				0.44	0.44	0.44
Internet data bundles per mb Rate (a)	10.02	per mb				0.20	0.20	0.20

09 Recreation and culture

Average price of bestselling Television	2.30	LCD				1237.33	1158.08	1237.33
Book warwick mm ruling B Exercise Book	1.44	1B4 64 pag	1.00	1.00	1.00	1.30	1.30	1.30
Average price of Laptop	1.33	each				3259.00	3083.50	3259.00

10 Education

Fees PTA Primary Y Urban Registration fees	7.23	Year 6				67.50	67.50	67.50
Fees PTA Secondary Y Urban Registration fe	5.11	Year 10				49.00	49.00	49.00
Fees Tertiary NUS registration School Fees	3.79	registration	292.00	292.00	292.00	292.00	292.00	292.00
Fees Secondary Y Examination Fees (a)	3.61	Y12-13				25.50	25.50	25.50

11 Restaurants and hotels

Fish & Meal	7.79	1 serve	10.00	10.00	10.00	9.00	9.00	9.00
Curry & Meal	4.87	1 serve	3.00	3.00	3.00	3.33	3.33	3.33
Chicken & Meal (a)	4.87	1 serve				9.36	9.36	9.36
Steam rice & chicken Meal (a)	4.87	1 serve				4.83	4.83	4.83

12 Miscellaneous goods and services

Paper Sofan deluxe ply Toilet Paper	8.52	250 sheets	1.00	1.00	1.00	0.99	0.99	1.01
Hair Gel	4.59	1124ml	4.30	4.30	4.30	5.06	5.11	5.21
Remains price for Storage of remains (a)	4.41	per week				56.67	56.67	56.67
Basic Casket (a)	4.41	each				1966.67	1966.67	1966.67
Standard Embalming (a)	4.41	1 person				1500.00	1500.00	1500.00
Toilet soap (a)	4.38	90g				1.89	1.92	1.90
Diapers (a)	4.19	5kg-10kg				13.14	13.47	13.49

Source : Samoa Bureau Statistics

(a) : New commodity from February 2016

(P) : Provisional figures

Table 3. IMPORTED GOODS COMPONENT OF THE CONSUMER PRICE INDEX
(Base Period : Average Prices February 2016 = 100)

Group	All Items	Food and Non Alcoholic Beverages	Alcoholic Beverages, Tobacco and Narcotics	Clothing and Footwear	Housing, Water, Electricity, Gas and other Fuels	Furnishings, Household Equipment and Maintenance	Health	Transport	Communication	Recreation and Culture	Education	Restaurants	Miscellaneous goods and services
Weights	494.7	269.1	23.8	15.2	28.3	26.9	2.5	88.6	n.a	5.6	n.a	n.a	34.7
Ave - 2013	109.5	107.6	109.6	101.7	108.7	98.9	99.2	137.1		89.9			104.3
Ave - 2014	110.7	109.6	110.8	100.9	108.7	98.2	98.0	138.3		91.3			102.0
Ave - 2015	104.5	104.5	103.0	99.5	104.5	99.1	100.5	114.0		96.8			99.2
2015													
May		104.1	109.6	100.9	104.4	98.0	102.1	115.3		95.1			98.9
June	104.0	103.6	107.2	100.1	104.2	98.9	101.1	113.1		95.1			98.6
July	103.2	102.1	97.6	100.2	104.9	99.1	99.9	119.3		95.1			98.6
August	102.6	100.8	94.0	99.7	105.3	100.3	100.0	122.4		100.0			99.0
September	102.0	100.6	94.0	98.4	104.9	100.3	100.0	117.8		100.0			99.0
October	102.4	102.2	94.0	96.9	102.6	100.2	100.0	112.3		100.0			99.2
November	102.3	101.6	100.0	98.4	103.6	99.8	100.0	112.4		100.0			99.5
December	101.4	101.2	100.7	97.9	102.8	100.1	100.0	106.4		100.0			99.4
2016													
January	101.1	100.5	101.4	98.2	102.4	100.1	100.0	105.7		100.0			101.5
February	100.0	100.0	100.0	100.0	100.0	100.0	100.0	100.0		100.0			100.0
March	99.4	100.7	100.0	99.7	96.1	100.1	100.4	95.8		100.0			99.9
April	99.4	101.7	100.7	99.8	96.7	99.4	100.4	92.6		96.0			100.6
May (P)	100.3	101.2	100.7	99.8	98.0	98.2	96.2	98.4		100.0			101.5
Percentage Change (P)													
May 2016 over Apr 2016	0.9%	-0.4%	0.0%	0.0%	1.3%	-1.2%	-4.1%	6.2%		4.2%			0.9%
May 2016 over May 2015	-4.2%	-2.8%	-8.1%	-1.1%	-6.2%	0.2%	-5.7%	-14.6%		5.1%			2.7%
IMPORTED ITEMS UNDERLYING INDEX													
Group	All Items	Food and Non Alcoholic Beverages	Alcoholic Beverages, Tobacco and Narcotics	Clothing and Footwear	Housing, Water, Electricity, Gas and other Fuels	Furnishings, Household Equipment and Maintenance	Health	Transport	Communication	Recreation and Culture	Education	Restaurants	Miscellaneous goods and services
Weights	401.2	269.1	n.a	15.2	24.2	26.9	2.5	23.0	n.a	5.6	n.a	n.a	34.7
Ave - 2013	106.1	107.6		101.7	102.7	98.9	99.2	114.8		89.9			104.3
Ave - 2014	107.3	109.6		100.9	102.5	98.2	98.0	108.9		91.3			102.0
Ave - 2015	103.4	104.5		99.5	102.0	99.1	100.5	105.9		96.8			99.2
2015													
May	103.2	104.1		100.9	101.9	98.0	102.1	115.5		95.1			98.9
June	102.7	103.6		100.1	101.8	98.9	101.1	106.3		95.1			98.6
July	101.4	102.1		100.2	101.9	99.1	99.9	99.9		95.1			98.6
August	100.6	100.8		99.7	102.2	100.3	100.0	100.0		100.0			99.0
September	100.5	100.6		98.4	102.4	100.3	100.0	100.0		100.0			99.0
October	101.6	102.2		96.9	101.2	100.2	100.0	100.0		100.0			99.2
November	101.2	101.6		98.4	101.8	99.8	100.0	100.0		100.0			99.5
December	100.8	101.2		97.9	101.8	100.1	100.0	100.0		100.0			99.4
2016													
January	100.5	100.5		98.2	101.1	100.1	100.0	100.0		100.0			101.5
February	100.0	100.0		100.0	100.0	100.0	100.0	100.0		100.0			100.0
March	100.3	100.7		99.7	97.4	100.1	100.4	100.0		100.0			99.9
April	100.9	101.7		99.8	97.5	99.4	100.4	100.0		96.0			100.6
May (P)	100.7	101.2		99.8	97.6	98.2	96.2	100.0		100.0			101.5
Percentage Change (P)													
May 2016 over Apr 2016	-0.2%	-0.4%		0.0%	0.1%	-1.2%	-4.1%	0.0%		4.2%			0.9%
May 2016 over May 2015	-2.5%	-2.8%		-1.1%	-4.2%	0.2%	-5.7%	-13.4%		5.1%			2.7%

Source : Samoa Bureau Statistics

(P): Provisional figures

Note: n.a. Not applicable

Table 4. LOCAL GOODS COMPONENT OF THE CONSUMER PRICE INDEX
(Base Period : Average Prices February 2016 = 100)

Group	All Items	Food and Non Alcoholic Beverages	Alcoholic Beverages, Tobacco and Narcotics	Clothing and Footwear	Housing, Water, Electricity, Gas and other Fuels	Furnishings, Household Equipment and Maintenance	Health	Transport	Communication	Recreation and Culture	Education	Restaurants	Miscellaneous goods and services
Weights	505.3	134.6	104.6	6.0	91.3	3.9	2.2	59.9	51.5	0.4	19.7	22.4	8.8
Ave - 2013	93.3	89.6	90.3	86.6	111.2	103.4	56.3	91.4	100.1	99.6	98.2	85.6	
Ave - 2014	91.9	81.5	93.4	96.3	115.9	100.8	95.8	99.8	100.1	100.0	98.2	92.1	
Ave - 2015	96.9	92.0	96.7	97.6	106.4	101.3	98.2	104.9	100.0	100.0	100.0	98.7	
2015													
May	95.6	87.4	94.5	99.5	113.5	101.7	95.8	109.5	100.1	100.0	100.0	100.0	
June	96.5	91.8	96.1	100.0	100.0	101.7	100.0	107.7	100.1	100.0	100.0	100.0	
July	99.3	96.5	96.1	100.0	104.2	101.7	100.0	112.4	100.1	100.0	100.0	100.0	
August	95.8	92.3	95.9	100.0	95.8	101.7	100.0	101.6	99.9	100.0	100.0	100.0	
September	94.4	87.0	98.9	100.0	95.8	101.7	100.0	107.8	99.9	100.0	100.0	100.0	
October	97.2	91.8	98.9	100.0	105.2	101.7	100.0	105.6	99.9	100.0	100.0	100.0	
November	98.0	95.3	99.0	100.0	105.2	100.0	100.0	96.9	99.9	100.0	100.0	100.0	
December	99.7	101.2	99.0	100.0	92.7	100.3	100.0	99.2	99.9	100.0	100.0	100.0	
2016													
January	106.3	112.6	100.0	100.0	104.2	100.0	100.0	105.0	100.0	100.0	100.0	100.0	
February	100.0	100.0	100.0	100.0	100.0	100.0	100.0	100.0	100.0	100.0	100.0	100.0	100.0
March	99.8	100.4	99.6	99.6	96.8	100.0	100.0	103.0	100.0	100.0	100.0	100.0	100.0
April	99.5	102.2	99.6	100.0	95.5	100.0	100.0	98.7	100.0	100.0	100.0	100.0	100.0
May (P)	100.1	104.1	99.6	100.0	93.6	100.0	100.0	101.9	100.0	100.0	100.0	100.0	100.0
Percentage Change (P)													
May 2016 over Apr 2016	0.6%	1.9%	0.0%	0.0%	-2.0%	0.0%	0.0%	3.3%	0.0%	0.0%	0.0%	0.0%	0.0%
May 2016 over May 2015	4.7%	19.2%	5.4%	0.5%	-17.5%	-1.7%	4.4%	-6.9%	-0.1%	0.0%	0.0%	0.0%	

LOCAL ITEMS UNDERLYING INDEX

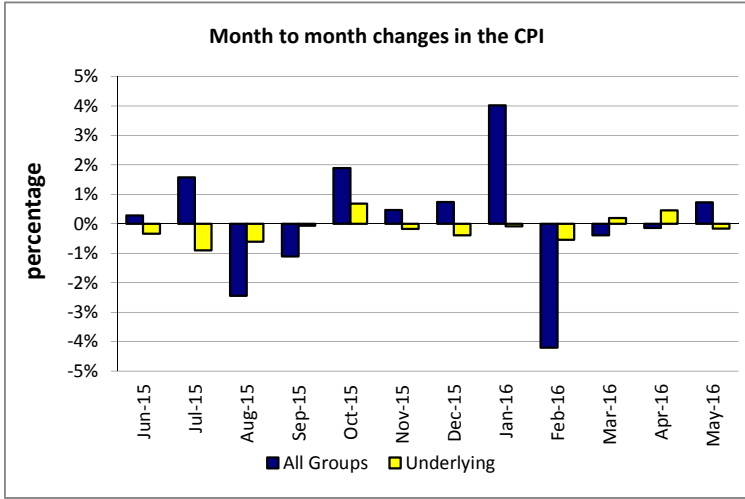
Group	All Items	Food and Non Alcoholic Beverages	Alcoholic Beverages, Tobacco and Narcotics	Clothing and Footwear	Housing, Water, Electricity, Gas and other Fuels	Furnishings, Household Equipment and Maintenance	Health	Transport	Communication	Recreation and Culture	Education	Restaurants	Miscellaneous goods and services
Weights	185.5	76.1	n.a	6.0	n.a	3.9	1.0	3.4	51.5	n.a	12.3	22.4	8.8
Ave - 2013	97.2	100.3		86.6	93.4	103.4	80.0	100.0		100.0		85.6	
Ave - 2014	98.3	99.7		96.3	98.3	100.8	80.0	100.0		100.0		92.1	
Ave - 2015	99.9	100.3		97.6	98.8	101.3	91.7	100.0		100.0		98.7	
2015													
May	100.5	100.9		99.5	98.4	101.7	80.0	100.0		100.0		100.0	
June	100.6	100.7		100.0	99.0	101.7	100.0	100.0		100.0		100.0	
July	100.6	100.8		100.0	99.0	101.7	100.0	100.0		100.0		100.0	
August	100.6	100.8		100.0	99.0	101.7	100.0	100.0		100.0		100.0	
September	100.7	101.0		100.0	99.0	101.7	100.0	100.0		100.0		100.0	
October	100.3	100.3		100.0	98.8	101.7	100.0	100.0		100.0		100.0	
November	100.7	101.1		100.0	100.0	100.0	100.0	100.0		100.0		100.0	
December	100.1	100.2		100.0	98.4	100.3	100.0	100.0		100.0		100.0	
2016													
January	100.8	101.3		100.0	100.0	100.0	100.0	100.0		100.0		100.0	
February	100.0	100.0		100.0	100.0	100.0	100.0	100.0	100.0	100.0	100.0	100.0	100.0
March	99.9	99.8		99.6		100.0	100.0	100.0	100.0		100.0	100.0	100.0
April	100.1	100.2		100.0		100.0	100.0	100.0	100.0		100.0	100.0	100.0
May (P)	100.1	100.2		100.0		100.0	100.0	100.0	100.0		100.0	100.0	100.0
Percentage Change (P)													
May 2016 over Apr 2015	0.0%	0.0%		0.0%		0.0%	0.0%	0.0%	0.0%		0.0%	0.0%	0.0%
May 2016 over May 2015	-0.4%	-0.8%		0.5%		-1.7%	25.0%	0.0%	n.a		n.a	0.0%	n.a

Source : Samoa Bureau Statistics

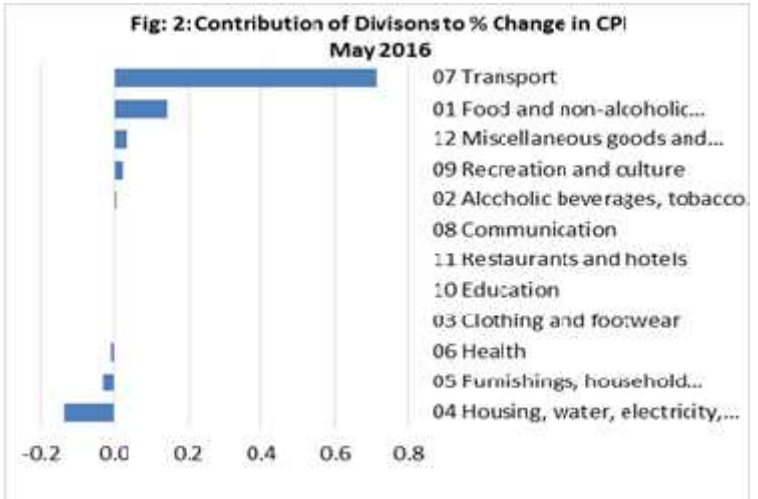
(P): Provisional figures

Note: n.a. Not applicable

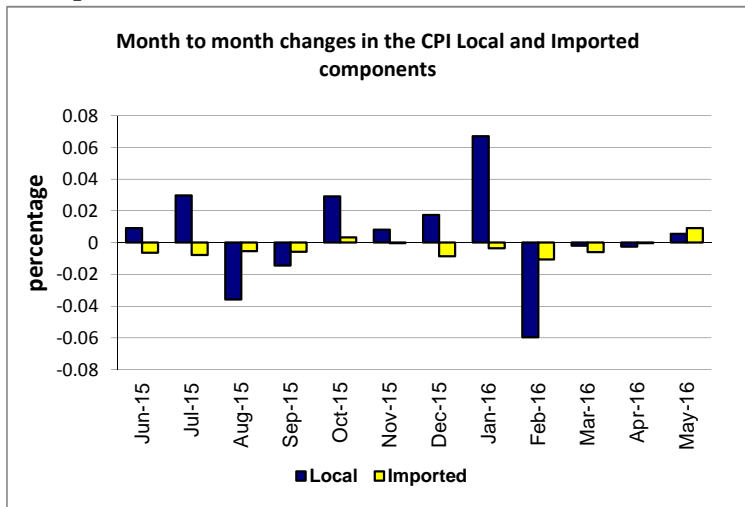
Graph.1



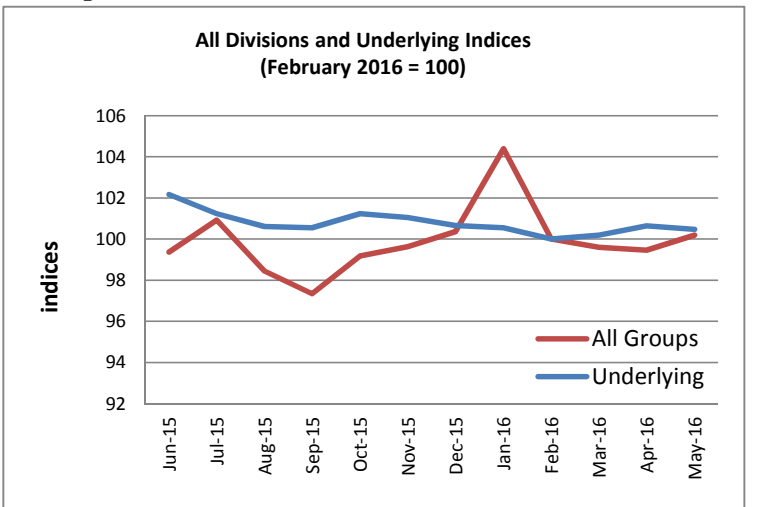
Graph.2



Graph.3



Graph.4



Graph.5

