

Please address all correspondence  
To Government Statistician  
In reply, please quote the file reference



File Ref: CPI 5/16

GOVERNMENT OF SAMOA

## SAMOA BUREAU OF STATISTICS

# CONSUMER PRICE INDEX May 2016

*This is the first release on the February 2016 base, and includes updated weights. See attached tables for details*

### Key findings:

The Consumer Price Index for May 2016 increased by 0.7 percent compared to the previous month.

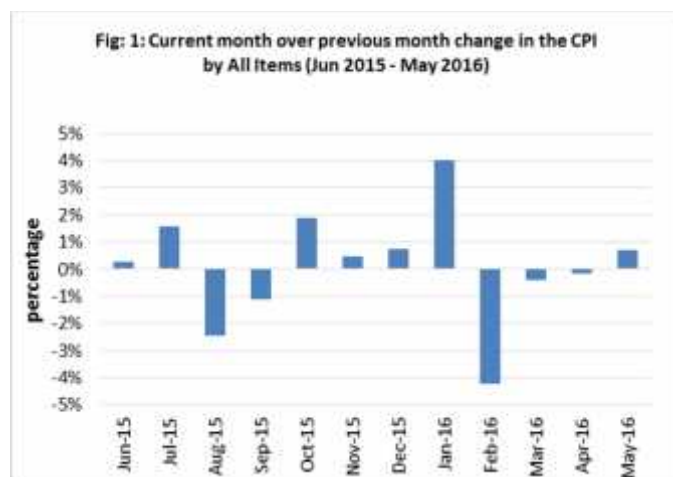
- Transport index increased by 5.0 percent, mainly due to higher prices for airline fare and fuel.
- Recreation and Culture also increased by 3.9 percent.
- The Average Annual Inflation for the year ended May 2016 down by 0.1 percent.

In the year to May 2016, the CPI rose 1.1 percent.

### SUMMARY

The Consumer Price Index for May 2016 was 0.7 percent higher than April 2016, and was 1.1 percent higher than May 2015.

The Imported Goods Component registered an increase of 0.9 percent, while Local Component also recorded an increase of 0.6 percent from the previous month. Figure 1 shows the month to month percentage changes in the Consumer Price Index by all Divisions from May 2015 to May 2016.

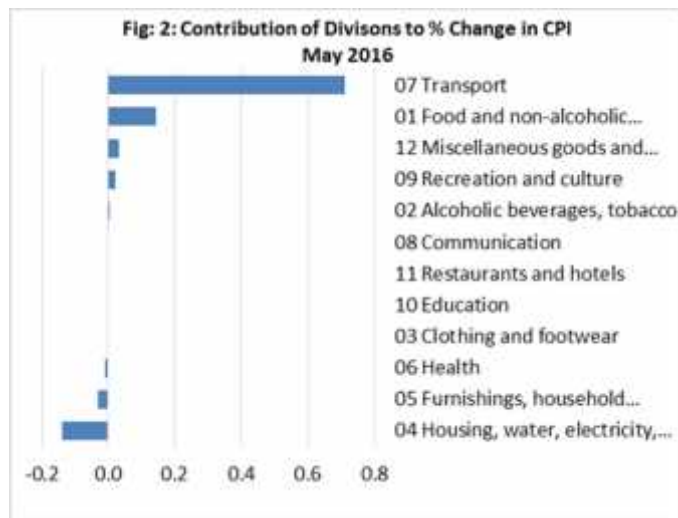


Source : Samoa Bureau of Statistics

## Total All Divisions Contribution

Transport divisions along with Food and Non Alcoholic Beverages were the main contributors to the overall increase of 0.7 percent in the All Division Consumer Price Index.

On the other hand, there were offsetting negative contributions from Housing, Water, Electricity, Gas and other Fuels division with 0.14 and Furnishing, Household Equipment and Maintenance division with 0.03 percent decreases.



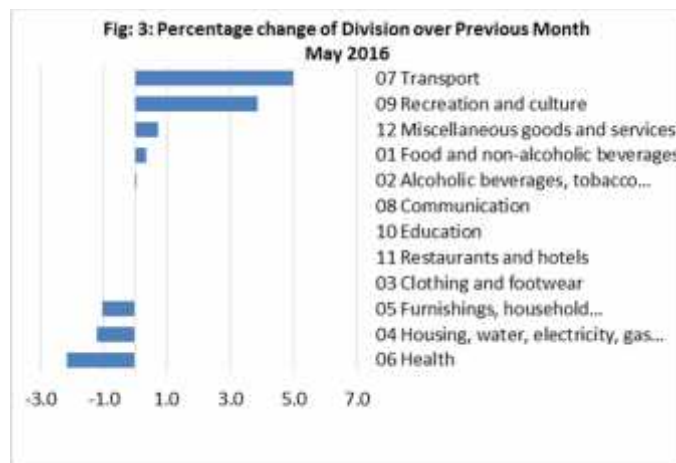
Source : Samoa Bureau of Statistics

## Consumer Price Index (% Change)

The Transport index recorded an increase of 5.0 percent. Recreation and Culture showed an increase of 3.9 percent, while Miscellaneous good and services and Food and Non Alcoholic Beverages indices both registered increases of 0.7 and 0.3 percent respectively.

On the other hand, decreases were recorded for Health with 2.2 percent, Housing, Water, Electricity, Gas and other Fuels with 1.2 percent and Furnishing, Household Equipment and Maintenance with 1.0 percent.

No changes were recorded for the Alcoholic Beverages, Tobacco and Narcotics, Clothing and Footwear, Communication, Education and Restaurants indices. Graphically presented in Fig 3 is the May 2016 percentage change for all divisions from April 2016.



Source : Samoa Bureau of Statistics

## Imported Goods Component

The Imported Goods Component of the Consumer Price Index registered an increase of 0.9 percent when compared to the previous month. This increase was mainly due to higher prices recorded for fuel (petrol, diesel and kerosene).

## Local Goods Component

Increased prices recorded for airline fare (Apia-Auckland-Apia) have resulted in the 0.6 percent increase in the Local Good Component.

## Transport Index

Higher prices recorded for fuel (petrol and diesel) and airline fare (Apia-Auckland-Apia) is reflected in the 5.0 percent increase in the Transport Index.

## Recreation and Culture Index

The Recreation and Culture Index recorded an increase of 3.9 percent higher due to the rise in prices recorded for LCD television and laptop.

## Miscellaneous Goods and Services Index

Increased prices recorded for toilet paper and hair gel is reflected in the 0.7 percent increase in the Miscellaneous Good and Services index.

## Health Index

Decreased prices recorded for amoxicillin is resulted in the 2.2 percent decrease in the Health index.

## Housing, Water, Electricity, Gas and other Fuels Index

The 1.2 percent decrease in the Housing, Water, Electricity, Gas and other Fuels Index was a result of the lower prices recorded for electricity (kwh).

## Furnishings, Household Equipment, and Maintenance Index

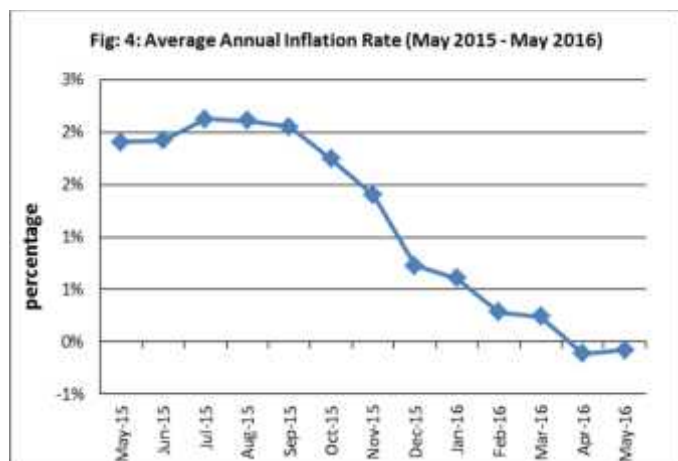
Lower prices recorded for mosquito coil is resulted in the 1.0 percent decrease in the Furnishing, Household Equipment and Maintenance index.

## Underlying Indices <sup>1/</sup>

The All Items Underlying Index for May 2016 registered a decrease of 0.2 percent when compared to April 2016, and a decrease of 2.0 percent when compared to May 2015. The Imported Items Underlying Index registered a decrease of 0.2 percent, while Local Items Underlying Index recorded no change from the previous month.

## Inflation Rate

The average annual inflation rate for the year ended May 2016 was fell by 0.1 percent. For the twelve months ending May 2015 the inflation rate was 1.9 percent. Presented in Fig 4 is the Average annual inflation rate (Jun 2015 - May 2016).



Source : Samoa Bureau of Statistics

The attached Tables and Graphs provide the user with more detailed analysis

## Technical Notes:

The Consumer Price (CPI) measures the rate of inflation for Samoa. It is designed to measure the change in prices for the goods purchased by households in Samoa. The CPI measures the change in prices by comparing the prices for a basket of goods and services at the collection period with the price for the same goods in a base period.

The basket of goods that is priced is based on the average expenditures of households as recorded in the Household Income and Expenditure Survey (HIES). The HIES survey identifies how much households spend on different items. The more households spend on an item on average, the more important it is to the price index, and the higher the weight in the index.

<sup>1/</sup> Monthly movements in the 'headline' CPI series can be volatile. This volatility reflects price changes in particular items that may be due, among other factors, to fluctuations in commodity markets and agricultural conditions, policy changes, or seasonal or infrequent price resetting.

Underlying inflation is a measure of inflation that excludes certain items that face volatile price movements. Underlying inflation eliminates products that can have temporary price shocks because these shocks can diverge from the overall trend of inflation and give a false measure of inflation.

**SAMOA BUREAU OF STATISTICS**

*Economic Statistics Division  
FMFM II Building, Level 1  
P O Box 1151  
Apia, Samoa*

*Phone: (685) 62014/62015  
Fax: (685) 24675  
E-mail: [info.stats@sbs.gov.ws](mailto:info.stats@sbs.gov.ws)  
Website: [www.sbs.gov.ws](http://www.sbs.gov.ws)*

Date of release: 14<sup>th</sup> June 2016.

The next Consumer Price Index will be released on 11<sup>th</sup> July 2016.

  
Muagututi'a S Reupena.  
**GOVERNMENT STATISTICIAN**

**Table 1. CONSUMER PRICE INDEX.**  
(Base Period : Average Prices February 2016 = 100)

| Group                             | All Items     | Food and Non Alcoholic Beverages | Alcoholic Beverages, Tobacco and Narcotics | Clothing and Footwear | Housing, Water, Electricity, Gas and other Fuels | Furnishings, Household Equipment, and Maintenance | Health     | Transport    | Communication | Recreation and Culture | Education   | Restaurants | Miscellaneous goods and services |
|-----------------------------------|---------------|----------------------------------|--|-----------------------|--|---|------------|--------------|---------------|------------------------|-------------|-------------|----------------------------------|
| <b>Weights</b>                    | <b>1000.0</b> | <b>403.7</b>                     | <b>128.4</b>                               | <b>21.2</b>           | <b>119.6</b>                                     | <b>30.8</b>                                       | <b>4.6</b> | <b>148.5</b> | <b>51.5</b>   | <b>6.1</b>             | <b>19.7</b> | <b>22.4</b> | <b>43.5</b>                      |
| Ave - 2013                        | 99.5          | 98.1                             | 93.2                                       | 95.3                  | 110.6  | 100.1   | 86.3       | 110.4        | 100.1         | 99.3                   | 98.3        | 85.6        | 104.3                            |
| Ave - 2014                        | 99.1          | 94.8                             | 96.1                                       | 98.9                  | 114.3  | 98.9  | 97.3       | 115.8        | 100.1         | 99.7                   | 98.3        | 92.2        | 101.9                            |
| Ave - 2015                        | 99.8          | 97.9                             | 97.7                                       | 98.6                  | 106.0  | 99.7  | 99.9       | 108.7        | 100.0         | 99.9                   | 100.0       | 98.7        | 99.2                             |
| 2015                              |               |                                  |  |                       |  |   |            |              |               |                        |             |             |                                  |
| May                               | 99.1          | 95.3                             | 96.8                                       | 100.3                 | 111.6  | 98.9  | 100.2      | 112.0        | 100.1         | 99.9                   | 100.0       | 100.0       | 98.9                             |
| June                              | 99.4          | 97.4                             | 97.7                                       | 100.0                 | 100.8  | 99.6  | 100.7      | 110.0        | 100.1         | 99.9                   | 100.0       | 100.0       | 98.5                             |
| July                              | 100.9         | 99.2                             | 96.3                                       | 100.1                 | 104.3  | 99.8  | 100.0      | 115.3        | 100.1         | 99.9                   | 100.0       | 100.0       | 98.5                             |
| August                            | 98.4          | 96.4                             | 95.6                                       | 99.7                  | 97.8   | 100.7   | 100.0      | 110.3        | 99.9          | 100.0                  | 100.0       | 100.0       | 99.0                             |
| September                         | 97.3          | 93.5                             | 98.1                                       | 99.0                  | 97.7   | 100.7   | 100.0      | 112.1        | 99.9          | 100.0                  | 100.0       | 100.0       | 99.0                             |
| October                           | 99.2          | 96.7                             | 98.1                                       | 98.2                  | 104.6  | 100.6   | 100.0      | 108.5        | 99.9          | 100.0                  | 100.0       | 100.0       | 99.3                             |
| November                          | 99.6          | 98.3                             | 99.2                                       | 99.1                  | 104.9  | 99.9  | 100.0      | 103.4        | 99.9          | 100.0                  | 100.0       | 100.0       | 99.5                             |
| December                          | 100.4         | 101.2                            | 99.2                                       | 98.7                  | 94.8   | 100.2   | 100.0      | 102.2        | 99.9          | 100.0                  | 100.0       | 100.0       | 99.4                             |
| 2016                              |               |                                  |  |                       |  |   |            |              |               |                        |             |             |                                  |
| January                           | 104.4         | 106.9                            | 100.2                                      | 98.9                  | 103.7  | 100.1   | 100.0      | 105.3        | 100.0         | 100.0                  | 100.0       | 100.0       | 101.6                            |
| February                          | 100.0         | 100.0                            | 100.0                                      | 100.0                 | 100.0  | 100.0   | 100.0      | 100.0        | 100.0         | 100.0                  | 100.0       | 100.0       | 100.0                            |
| March                             | 99.6          | 100.6                            | 99.7                                       | 99.7                  | 96.7   | 100.1   | 100.2      | 98.7         | 100.0         | 100.0                  | 100.0       | 100.0       | 99.9                             |
| April                             | 99.5          | 101.8                            | 99.8                                       | 99.9                  | 95.8   | 99.5  | 100.2      | 95.1         | 100.0         | 96.3                   | 100.0       | 100.0       | 100.5                            |
| May (P)                           | 100.2         | 102.2                            | 99.8                                       | 99.8                  | 94.7   | 98.4  | 98.0       | 99.8         | 100.0         | 100.0                  | 100.0       | 100.0       | 101.2                            |
| <b>Percentage Change (P)</b>      |               |                                  |  |                       |  |   |            |              |               |                        |             |             |                                  |
| May 2016 over April 2016          | 0.7%          | 0.3%                             | 0.0%                                       | 0.0%                  | -1.2%  | -1.0%   | -2.2%      | 5.0%         | 0.0%          | 3.9%                   | 0.0%        | 0.0%        | 0.7%                             |
| May 2016 over May 2015            | 1.1%          | 7.2%                             | 3.1%                                       | -0.4%                 | -15.2%   | -0.5%   | -2.2%      | -10.8%       | -0.1%         | 0.1%                   | 0.0%        | 0.0%        | 2.4%                             |
| <b>ALL ITEMS UNDERLYING INDEX</b> |               |                                  |  |                       |  |   |            |              |               |                        |             |             |                                  |
| Group                             | All Items     | Food and Non Alcoholic Beverages | Alcoholic Beverages, Tobacco and Narcotics | Clothing and Footwear | Housing, Water, Electricity, Gas and other Fuels | Furnishings, Household Equipment, and Maintenance | Health     | Transport    | Communication | Recreation and Culture | Education   | Restaurants | Miscellaneous goods and services |
| <b>Weights</b>                    | <b>586.7</b>  | <b>345.3</b>                     | <b>n.a</b>                                 | <b>21.2</b>           | <b>24.2</b>                                      | <b>30.8</b>                                       | <b>3.5</b> | <b>26.4</b>  | <b>51.5</b>   | <b>5.6</b>             | <b>12.3</b> | <b>22.4</b> | <b>43.5</b>                      |
| Ave - 2013                        | 103.8         | 105.9                            |  | 95.3                  | 101.9  | 100.0   | 97.6       | 104.8        |               | 94.7                   |             | 85.6        | 104.3                            |
| Ave - 2014                        | 105.0         | 107.3                            |  | 98.9                  | 102.2  | 98.9  | 96.5       | 102.9        |               | 95.4                   |             | 92.1        | 102.0                            |
| Ave - 2015                        | 102.5         | 103.5                            |  | 98.7                  | 101.7  | 99.7  | 99.8       | 101.9        |               | 98.3                   |             | 98.7        | 99.2                             |
| 2015                              |               |                                  |  |                       |  |   |            |              |               |                        |             |             |                                  |
| May                               | 102.5         | 103.4                            |  | 100.3                 | 101.6  | 98.9  | 100.2      | 105.0        |               | 97.4                   |             | 100.0       | 98.9                             |
| June                              | 102.2         | 103.0                            |  | 100.1                 | 101.5  | 99.6  | 101.0      | 102.1        |               | 97.4                   |             | 100.0       | 98.6                             |
| July                              | 101.2         | 101.8                            |  | 100.1                 | 101.7  | 99.8  | 99.9       | 100.0        |               | 97.4                   |             | 100.0       | 98.6                             |
| August                            | 100.6         | 100.8                            |  | 99.8                  | 101.9  | 100.7   | 100.0      | 100.0        |               | 100.0                  |             | 100.0       | 99.0                             |
| September                         | 100.5         | 0.0                              |  | 99.1                  | 102.2  | 100.7   | 100.0      | 100.0        |               | 100.0                  |             | 100.0       | 99.0                             |
| October                           | 101.2         | 101.8                            |  | 98.2                  | 101.0  | 100.6   | 100.0      | 100.0        |               | 100.0                  |             | 100.0       | 99.2                             |
| November                          | 101.0         | 101.5                            |  | 99.1                  | 101.6  | 99.9  | 100.0      | 100.0        |               | 100.0                  |             | 100.0       | 99.5                             |
| December                          | 100.7         | 100.9                            |  | 98.8                  | 101.5  | 100.1   | 100.0      | 100.0        |               | 100.0                  |             | 100.0       | 99.4                             |
| 2016                              |               |                                  |  |                       |  |   |            |              |               |                        |             |             |                                  |
| January                           | 100.6         | 100.7                            |  | 99.0                  | 101.0  | 100.1   | 100.0      | 100.0        |               | 100.0                  |             | 100.0       | 101.5                            |
| February                          | 100.0         | 100.0                            |  | 100.0                 | 100.0  | 100.0   | 100.0      | 100.0        | 100.0         | 100.0                  | 100.0       | 100.0       | 100.0                            |
| March                             | 100.2         | 100.5                            |  | 99.7                  | 97.4   | 100.1   | 100.3      | 100.0        | 100.0         | 100.0                  | 100.0       | 100.0       | 99.9                             |
| April                             | 100.6         | 101.3                            |  | 99.9                  | 97.5   | 99.5  | 100.3      | 100.0        | 100.0         | 96.0                   | 100.0       | 100.0       | 100.5                            |
| May (P)                           | 100.5         | 101.0                            |  | 99.8                  | 97.6   | 98.4  | 97.4       | 100.0        | 100.0         | 100.0                  | 100.0       | 100.0       | 101.2                            |
| <b>Percentage Change (P)</b>      |               |                                  |  |                       |  |   |            |              |               |                        |             |             |                                  |
| May 2016 over Apr 2016            | -0.2%         | -0.3%                            |  | 0.0%                  | 0.1%   | -1.0%   | -2.9%      | 0.0%         | 0.0%          | 4.2%                   | 0.0%        | 0.0%        | 0.7%                             |
| May 2016 over May 2015            | -2.0%         | -2.3%                            |  | -0.5%                 | -3.9%  | -0.5%   | -2.9%      | -4.8%        | n.a           | 2.6%                   | n.a         | 0.0%        | 2.4%                             |

Source : Samoa Bureau Statistics  
(P): Provisional figures  
Note: n.a. Not applicable

**Table 2. AVERAGE RETAIL PRICES OF SELECTED COMMODITIES**

| Commodities  | Wt   | Unit      | 2015   |        |        | 2016   |        |         |
|--|------|-----------|--------|--------|--------|--------|--------|---------|
|  |      |           | Mar    | Apr    | May    | Mar    | Apr    | May (P) |
| <b>01 Food and non-alcoholic beverages</b>                                   |      |           |        |        |        |        |        |         |
| Leg Quarters Chicken   | 62.2 | lb        | 2.20   | 2.20   | 2.20   | 1.29   | 1.35   | 1.34    |
| Raw Sugar  | 21.3 | 1 lb      | 1.11   | 1.11   | 1.12   | 1.21   | 1.22   | 1.21    |
| Bread  | 17.2 | loaf      | 1.70   | 1.70   | 1.70   | 1.78   | 1.78   | 1.78    |
| Corned Beef (a)  | 15.9 | 12 oz     |        |        |        | 8.57   | 8.62   | 8.58    |
| Taro   | 15.2 | 1 lb      | 0.97   | 0.88   | 0.88   | 1.02   | 1.14   | 1.26    |
| Re-packed medium grain rice  | 13.4 | 1 lb      | 1.53   | 1.51   | 1.58   | 1.60   | 1.61   | 1.60    |
| Prepacked medium grain rice (a)  | 13.4 | 2 lb      |        |        |        | 3.41   | 3.50   | 3.57    |
| Bongo  | 10.2 | 20grms    | 0.60   | 0.60   | 0.60   | 0.81   | 0.81   | 0.81    |
| Keke Saina Biscuits (a)  | 9.2  | pkt 10    |        |        |        | 5.84   | 5.84   | 5.84    |
| Tip Top Ice Cream (a)  | 9.2  | 2 ltr     |        |        |        | 14.92  | 14.87  | 14.87   |
| Ramen maggie   | 9.0  | 85gms     | 1.00   | 1.00   | 1.10   | 1.10   | 1.11   | 1.11    |
| Fish (Piece)   | 7.9  | lb        | 7.44   | 7.73   | 6.63   | 7.12   | 6.87   | 5.59    |
| Butter Anchor  | 7.7  | 1lb       | 12.50  | 12.50  | 12.00  | 11.71  | 11.71  | 11.71   |
| Round Pancake (a)  | 7.5  | sml       |        |        |        | 0.15   | 0.15   | 0.15    |
| Mutton Flaps   | 6.6  | lb        | 9.20   | 9.90   | 9.90   | 6.63   | 6.90   | 6.69    |
| Canned fish \$4:00 or over N/Oil   | 6.4  | 15 oz     | 4.30   | 4.38   | 4.48   | 4.46   | 4.52   | 4.50    |
| Canned fish between \$3.00 and \$3.99 in N/Oi                                | 6.4  | 15 oz     | 2.90   | 2.90   | 2.90   | 3.42   | 3.37   | 3.31    |
| Canned fish between \$3.00 and \$3.99 in N/Oi                                | 6.4  | 15 oz     | 3.23   | 3.23   | 3.13   | 3.15   | 3.14   | 3.20    |
| Canned fish under \$3.00 in N/Oil  | 6.4  | 15 oz     | 2.60   | 2.70   | 2.70   | 2.75   | 2.70   | 2.73    |
| Wings Turkey   | 6.3  | lb        | 3.90   | 3.90   | 3.90   | 3.06   | 2.74   | 2.74    |
| Fish (string)  | 6.0  | lb        | 4.15   | 4.51   | 3.96   | 4.12   | 4.06   | 4.07    |
| Fish (large)   | 6.0  | lb        | 7.05   | 6.48   | 6.88   | 6.79   | 6.62   | 7.65    |
| <b>02 Alcoholic beverages, tobacco and narcotics</b>                         |      |           |        |        |        |        |        |         |
| Lager Beer   | 37.9 | 355 mls   | 3.23   | 3.23   | 3.23   | 3.41   | 3.40   | 3.39    |
| Pall Mall Filter Cigarettes (Red)  | 24.3 | 20 rolls  | 10.00  | 10.00  | 10.00  | 10.50  | 10.50  | 10.50   |
| Pall Mall Menthol Cigarettes (Green)   | 24.3 | 20 rolls  | 10.00  | 10.00  | 10.00  | 10.50  | 10.50  | 10.50   |
| Beer (a)   | 16.3 | 330 mls   |        |        |        | 3.18   | 3.18   | 3.20    |
| Winfield Tobacco (a)   | 12.6 | packet    |        |        |        | 12.90  | 12.90  | 12.90   |
| <b>03 Clothing and footwear</b>  |      |           |        |        |        |        |        |         |
| Uniform le Faitaga College boys  | 4.3  | size 8-10 | 34.00  | 34.00  | 34.00  | 33.00  | 33.00  | 33.00   |
| Uniform Pa'ave (a)   | 3.7  | size 7    |        |        |        | 33.67  | 33.67  | 33.67   |
| <b>04 Housing, water, electricity, gas and other fuels</b>                   |      |           |        |        |        |        |        |         |
| Electricity  | 50.6 | kwh       | 1.00   | 1.00   | 0.87   | 0.82   | 0.80   | 0.77    |
| Reservoir treated Water  | 28.5 | 15-40 m3  | 1.40   | 1.40   | 1.40   | 1.40   | 1.40   | 1.40    |
| Liquid gas   | 15.8 | 20 lb     | 69.00  | 69.00  | 65.50  | 63.00  | 63.00  | 63.00   |
| Government house Rent  | 12.2 | 2 b/room  | 500.00 | 500.00 | 500.00 | 500.00 | 500.00 | 500.00  |
| <b>05 Furnishings, household equipment and routine household maintenance</b> |      |           |        |        |        |        |        |         |
| Washing powder (a)   | 6.3  | 200g      |        |        |        | 1.82   | 1.82   | 1.82    |
| Soap yellow Washing soap   | 5.9  | bar       | 3.00   | 3.00   | 3.00   | 2.89   | 2.89   | 2.89    |
| Mosquito coil  | 4.4  | 12 coil   | 1.20   | 1.20   | 1.20   | 1.40   | 1.40   | 1.30    |

## 06 Health

|                            |     |        |       |       |       |       |       |       |
|----------------------------|-----|--------|-------|-------|-------|-------|-------|-------|
| Amoxicillan mg Tablets (a) | 2.5 | 500 mg |       |       |       | 7.62  | 7.62  | 7.28  |
| Hospital Charge            | 1.1 | night  | 10.00 | 10.00 | 10.00 | 22.50 | 22.50 | 22.50 |

## 07 Transport

|                                |      |             |         |         |         |         |         |         |
|--------------------------------|------|-------------|---------|---------|---------|---------|---------|---------|
| Petro                          | 60.8 | 1 ltr       | 2.16    | 2.39    | 2.51    | 2.07    | 1.96    | 2.13    |
| Taxi Fare PO Motootua Hosp     | 8.2  | per trip    | 4.80    | 4.80    | 4.80    | 4.80    | 4.80    | 4.80    |
| Taxi Fares Po Malua            | 8.2  | per trip    | 31.30   | 31.30   | 31.30   | 31.30   | 31.30   | 31.30   |
| Taxi Fares PO Falefa           | 8.2  | per trip    | 43.20   | 43.20   | 43.20   | 43.20   | 43.20   | 43.20   |
| Air Fares Fagalii Pago Fagalii | 6.8  | return trip | 395.00  | 395.00  | 395.00  | 395.00  | 395.00  | 395.00  |
| Air Fares Apia Auckland Apia   | 6.8  | 1 month     | 1160.90 | 1838.20 | 2705.00 | 1719.50 | 1121.50 | 1497.82 |

## 08 Communication

|  |       |            |  |  |  |      |      |      |
|--|-------|------------|--|--|--|------|------|------|
| Calling per minute Rate cell phone (a) | 10.02 | per minute |  |  |  | 0.45 | 0.45 | 0.45 |
| Internet data bundles per mb Rate (a)  | 10.02 | per mb     |  |  |  | 0.20 | 0.20 | 0.20 |
| Calling per minute Rate cell phone (a) | 10.02 | per minute |  |  |  | 0.44 | 0.44 | 0.44 |
| Internet data bundles per mb Rate (a)  | 10.02 | per mb     |  |  |  | 0.20 | 0.20 | 0.20 |

## 09 Recreation and culture

|   |      |            |      |      |      |         |         |         |
|---|------|------------|------|------|------|---------|---------|---------|
| Average price of bestselling Television | 2.30 | LCD        |      |      |      | 1237.33 | 1158.08 | 1237.33 |
| Book warwick mm ruling B Exercise Book  | 1.44 | 1B4 64 pag | 1.00 | 1.00 | 1.00 | 1.30    | 1.30    | 1.30    |
| Average price of Laptop                 | 1.33 | each       |      |      |      | 3259.00 | 3083.50 | 3259.00 |

## 10 Education

|  |      |              |        |        |        |        |        |        |
|--|------|--------------|--------|--------|--------|--------|--------|--------|
| Fees PTA Primary Y Urban Registration fees | 7.23 | Year 6       |        |        |        | 67.50  | 67.50  | 67.50  |
| Fees PTA Secondary Y Urban Registration fe | 5.11 | Year 10      |        |        |        | 49.00  | 49.00  | 49.00  |
| Fees Tertiary NUS registration School Fees | 3.79 | registration | 292.00 | 292.00 | 292.00 | 292.00 | 292.00 | 292.00 |
| Fees Secondary Y Examination Fees (a)      | 3.61 | Y12-13       |        |        |        | 25.50  | 25.50  | 25.50  |

## 11 Restaurants and hotels

|                               |      |         |       |       |       |      |      |      |
|-------------------------------|------|---------|-------|-------|-------|------|------|------|
| Fish & Meal                   | 7.79 | 1 serve | 10.00 | 10.00 | 10.00 | 9.00 | 9.00 | 9.00 |
| Curry & Meal                  | 4.87 | 1 serve | 3.00  | 3.00  | 3.00  | 3.33 | 3.33 | 3.33 |
| Chicken & Meal (a)            | 4.87 | 1 serve |       |       |       | 9.36 | 9.36 | 9.36 |
| Steam rice & chicken Meal (a) | 4.87 | 1 serve |       |       |       | 4.83 | 4.83 | 4.83 |

## 12 Miscellaneous goods and services

|  |      |            |      |      |      |         |         |         |
|--|------|------------|------|------|------|---------|---------|---------|
| Paper Sofan deluxe ply Toilet Paper      | 8.52 | 250 sheets | 1.00 | 1.00 | 1.00 | 0.99    | 0.99    | 1.01    |
| Hair Gel                                 | 4.59 | 1124ml     | 4.30 | 4.30 | 4.30 | 5.06    | 5.11    | 5.21    |
| Remains price for Storage of remains (a) | 4.41 | per week   |      |      |      | 56.67   | 56.67   | 56.67   |
| Basic Casket (a)                         | 4.41 | each       |      |      |      | 1966.67 | 1966.67 | 1966.67 |
| Standard Embalming (a)                   | 4.41 | 1 person   |      |      |      | 1500.00 | 1500.00 | 1500.00 |
| Toilet soap (a)                          | 4.38 | 90g        |      |      |      | 1.89    | 1.92    | 1.90    |
| Diapers (a)                              | 4.19 | 5kg-10kg   |      |      |      | 13.14   | 13.47   | 13.49   |

Source : Samoa Bureau Statistics

(a) : New commodity from February 2016

(P) : Provisional figures

**Table 3. IMPORTED GOODS COMPONENT OF THE CONSUMER PRICE INDEX**  
(Base Period : Average Prices February 2016 = 100)

| Group                                  | All Items    | Food and Non Alcoholic Beverages | Alcoholic Beverages, Tobacco and Narcotics | Clothing and Footwear | Housing, Water, Electricity, Gas and other Fuels | Furnishings, Household Equipment and Maintenance | Health     | Transport   | Communication | Recreation and Culture | Education  | Restaurants | Miscellaneous goods and services |
|--|--------------|----------------------------------|--|-----------------------|--|--|------------|-------------|---------------|------------------------|------------|-------------|----------------------------------|
| <b>Weights</b>                         | <b>494.7</b> | <b>269.1</b>                     | <b>23.8</b>                                | <b>15.2</b>           | <b>28.3</b>                                      | <b>26.9</b>                                      | <b>2.5</b> | <b>88.6</b> | <b>n.a</b>    | <b>5.6</b>             | <b>n.a</b> | <b>n.a</b>  | <b>34.7</b>                      |
| Ave - 2013                             | 109.5        | 107.6                            | 109.6                                      | 101.7                 | 108.7  | 98.9   | 99.2       | 137.1       |               | 89.9                   |            |             | 104.3                            |
| Ave - 2014                             | 110.7        | 109.6                            | 110.8                                      | 100.9                 | 108.7  | 98.2   | 98.0       | 138.3       |               | 91.3                   |            |             | 102.0                            |
| Ave - 2015                             | 104.5        | 104.5                            | 103.0                                      | 99.5                  | 104.5  | 99.1   | 100.5      | 114.0       |               | 96.8                   |            |             | 99.2                             |
| 2015                                   |              |                                  |  |                       |  |  |            |             |               |                        |            |             |                                  |
| May                                    |              | 104.1                            | 109.6                                      | 100.9                 | 104.4  | 98.0   | 102.1      | 115.3       |               | 95.1                   |            |             | 98.9                             |
| June                                   | 104.0        | 103.6                            | 107.2                                      | 100.1                 | 104.2  | 98.9   | 101.1      | 113.1       |               | 95.1                   |            |             | 98.6                             |
| July                                   | 103.2        | 102.1                            | 97.6                                       | 100.2                 | 104.9  | 99.1   | 99.9       | 119.3       |               | 95.1                   |            |             | 98.6                             |
| August                                 | 102.6        | 100.8                            | 94.0                                       | 99.7                  | 105.3  | 100.3  | 100.0      | 122.4       |               | 100.0                  |            |             | 99.0                             |
| September                              | 102.0        | 100.6                            | 94.0                                       | 98.4                  | 104.9  | 100.3  | 100.0      | 117.8       |               | 100.0                  |            |             | 99.0                             |
| October                                | 102.4        | 102.2                            | 94.0                                       | 96.9                  | 102.6  | 100.2  | 100.0      | 112.3       |               | 100.0                  |            |             | 99.2                             |
| November                               | 102.3        | 101.6                            | 100.0                                      | 98.4                  | 103.6  | 99.8   | 100.0      | 112.4       |               | 100.0                  |            |             | 99.5                             |
| December                               | 101.4        | 101.2                            | 100.7                                      | 97.9                  | 102.8  | 100.1  | 100.0      | 106.4       |               | 100.0                  |            |             | 99.4                             |
| 2016                                   |              |                                  |  |                       |  |  |            |             |               |                        |            |             |                                  |
| January                                | 101.1        | 100.5                            | 101.4                                      | 98.2                  | 102.4  | 100.1  | 100.0      | 105.7       |               | 100.0                  |            |             | 101.5                            |
| February                               | 100.0        | 100.0                            | 100.0                                      | 100.0                 | 100.0  | 100.0  | 100.0      | 100.0       |               | 100.0                  |            |             | 100.0                            |
| March                                  | 99.4         | 100.7                            | 100.0                                      | 99.7                  | 96.1   | 100.1  | 100.4      | 95.8        |               | 100.0                  |            |             | 99.9                             |
| April                                  | 99.4         | 101.7                            | 100.7                                      | 99.8                  | 96.7   | 99.4   | 100.4      | 92.6        |               | 96.0                   |            |             | 100.6                            |
| May (P)                                | 100.3        | 101.2                            | 100.7                                      | 99.8                  | 98.0   | 98.2   | 96.2       | 98.4        |               | 100.0                  |            |             | 101.5                            |
| <b>Percentage Change (P)</b>           |              |                                  |  |                       |  |  |            |             |               |                        |            |             |                                  |
| May 2016 over Apr 2016                 | 0.9%         | -0.4%                            | 0.0%                                       | 0.0%                  | 1.3%   | -1.2%  | -4.1%      | 6.2%        |               | 4.2%                   |            |             | 0.9%                             |
| May 2016 over May 2015                 | -4.2%        | -2.8%                            | -8.1%                                      | -1.1%                 | -6.2%  | 0.2%   | -5.7%      | -14.6%      |               | 5.1%                   |            |             | 2.7%                             |
| <b>IMPORTED ITEMS UNDERLYING INDEX</b> |              |                                  |  |                       |  |  |            |             |               |                        |            |             |                                  |
| Group                                  | All Items    | Food and Non Alcoholic Beverages | Alcoholic Beverages, Tobacco and Narcotics | Clothing and Footwear | Housing, Water, Electricity, Gas and other Fuels | Furnishings, Household Equipment and Maintenance | Health     | Transport   | Communication | Recreation and Culture | Education  | Restaurants | Miscellaneous goods and services |
| <b>Weights</b>                         | <b>401.2</b> | <b>269.1</b>                     | <b>n.a</b>                                 | <b>15.2</b>           | <b>24.2</b>                                      | <b>26.9</b>                                      | <b>2.5</b> | <b>23.0</b> | <b>n.a</b>    | <b>5.6</b>             | <b>n.a</b> | <b>n.a</b>  | <b>34.7</b>                      |
| Ave - 2013                             | 106.1        | 107.6                            |  | 101.7                 | 102.7  | 98.9   | 99.2       | 114.8       |               | 89.9                   |            |             | 104.3                            |
| Ave - 2014                             | 107.3        | 109.6                            |  | 100.9                 | 102.5  | 98.2   | 98.0       | 108.9       |               | 91.3                   |            |             | 102.0                            |
| Ave - 2015                             | 103.4        | 104.5                            |  | 99.5                  | 102.0  | 99.1   | 100.5      | 105.9       |               | 96.8                   |            |             | 99.2                             |
| 2015                                   |              |                                  |  |                       |  |  |            |             |               |                        |            |             |                                  |
| May                                    | 103.2        | 104.1                            |  | 100.9                 | 101.9  | 98.0   | 102.1      | 115.5       |               | 95.1                   |            |             | 98.9                             |
| June                                   | 102.7        | 103.6                            |  | 100.1                 | 101.8  | 98.9   | 101.1      | 106.3       |               | 95.1                   |            |             | 98.6                             |
| July                                   | 101.4        | 102.1                            |  | 100.2                 | 101.9  | 99.1   | 99.9       | 99.9        |               | 95.1                   |            |             | 98.6                             |
| August                                 | 100.6        | 100.8                            |  | 99.7                  | 102.2  | 100.3  | 100.0      | 100.0       |               | 100.0                  |            |             | 99.0                             |
| September                              | 100.5        | 100.6                            |  | 98.4                  | 102.4  | 100.3  | 100.0      | 100.0       |               | 100.0                  |            |             | 99.0                             |
| October                                | 101.6        | 102.2                            |  | 96.9                  | 101.2  | 100.2  | 100.0      | 100.0       |               | 100.0                  |            |             | 99.2                             |
| November                               | 101.2        | 101.6                            |  | 98.4                  | 101.8  | 99.8   | 100.0      | 100.0       |               | 100.0                  |            |             | 99.5                             |
| December                               | 100.8        | 101.2                            |  | 97.9                  | 101.8  | 100.1  | 100.0      | 100.0       |               | 100.0                  |            |             | 99.4                             |
| 2016                                   |              |                                  |  |                       |  |  |            |             |               |                        |            |             |                                  |
| January                                | 100.5        | 100.5                            |  | 98.2                  | 101.1  | 100.1  | 100.0      | 100.0       |               | 100.0                  |            |             | 101.5                            |
| February                               | 100.0        | 100.0                            |  | 100.0                 | 100.0  | 100.0  | 100.0      | 100.0       |               | 100.0                  |            |             | 100.0                            |
| March                                  | 100.3        | 100.7                            |  | 99.7                  | 97.4   | 100.1  | 100.4      | 100.0       |               | 100.0                  |            |             | 99.9                             |
| April                                  | 100.9        | 101.7                            |  | 99.8                  | 97.5   | 99.4   | 100.4      | 100.0       |               | 96.0                   |            |             | 100.6                            |
| May (P)                                | 100.7        | 101.2                            |  | 99.8                  | 97.6   | 98.2   | 96.2       | 100.0       |               | 100.0                  |            |             | 101.5                            |
| <b>Percentage Change (P)</b>           |              |                                  |  |                       |  |  |            |             |               |                        |            |             |                                  |
| May 2016 over Apr 2016                 | -0.2%        | -0.4%                            |  | 0.0%                  | 0.1%   | -1.2%  | -4.1%      | 0.0%        |               | 4.2%                   |            |             | 0.9%                             |
| May 2016 over May 2015                 | -2.5%        | -2.8%                            |  | -1.1%                 | -4.2%  | 0.2%   | -5.7%      | -13.4%      |               | 5.1%                   |            |             | 2.7%                             |

Source : Samoa Bureau Statistics

(P): Provisional figures

Note: n.a. Not applicable

**Table 4. LOCAL GOODS COMPONENT OF THE CONSUMER PRICE INDEX**  
(Base Period : Average Prices February 2016 = 100)

| Group                        | All Items    | Food and Non Alcoholic Beverages | Alcoholic Beverages, Tobacco and Narcotics | Clothing and Footwear | Housing,Water, Electricity, Gas and other Fuels | Furnishings, Household Equipment and Maintenance | Health     | Transport   | Communication | Recreation and Culture | Education   | Restaurants | Miscellaneous goods and services |
|------------------------------|--------------|----------------------------------|--|-----------------------|---|--|------------|-------------|---------------|------------------------|-------------|-------------|----------------------------------|
| <b>Weights</b>               | <b>505.3</b> | <b>134.6</b>                     | <b>104.6</b>                               | <b>6.0</b>            | <b>91.3</b>                                     | <b>3.9</b>                                       | <b>2.2</b> | <b>59.9</b> | <b>51.5</b>   | <b>0.4</b>             | <b>19.7</b> | <b>22.4</b> | <b>8.8</b>                       |
| Ave - 2013                   | 93.3         | 89.6                             | 90.3                                       | 86.6                  | 111.2   | 103.4  | 56.3       | 91.4        | 100.1         | 99.6                   | 98.2        | 85.6        |                                  |
| Ave - 2014                   | 91.9         | 81.5                             | 93.4                                       | 96.3                  | 115.9   | 100.8  | 95.8       | 99.8        | 100.1         | 100.0                  | 98.2        | 92.1        |                                  |
| Ave - 2015                   | 96.9         | 92.0                             | 96.7                                       | 97.6                  | 106.4   | 101.3  | 98.2       | 104.9       | 100.0         | 100.0                  | 100.0       | 98.7        |                                  |
| 2015                         |              |                                  |  |                       |   |  |            |             |               |                        |             |             |                                  |
| May                          | 95.6         | 87.4                             | 94.5                                       | 99.5                  | 113.5   | 101.7  | 95.8       | 109.5       | 100.1         | 100.0                  | 100.0       | 100.0       |                                  |
| June                         | 96.5         | 91.8                             | 96.1                                       | 100.0                 | 100.0   | 101.7  | 100.0      | 107.7       | 100.1         | 100.0                  | 100.0       | 100.0       |                                  |
| July                         | 99.3         | 96.5                             | 96.1                                       | 100.0                 | 104.2   | 101.7  | 100.0      | 112.4       | 100.1         | 100.0                  | 100.0       | 100.0       |                                  |
| August                       | 95.8         | 92.3                             | 95.9                                       | 100.0                 | 95.8  | 101.7  | 100.0      | 101.6       | 99.9          | 100.0                  | 100.0       | 100.0       |                                  |
| September                    | 94.4         | 87.0                             | 98.9                                       | 100.0                 | 95.8  | 101.7  | 100.0      | 107.8       | 99.9          | 100.0                  | 100.0       | 100.0       |                                  |
| October                      | 97.2         | 91.8                             | 98.9                                       | 100.0                 | 105.2   | 101.7  | 100.0      | 105.6       | 99.9          | 100.0                  | 100.0       | 100.0       |                                  |
| November                     | 98.0         | 95.3                             | 99.0                                       | 100.0                 | 105.2   | 100.0  | 100.0      | 96.9        | 99.9          | 100.0                  | 100.0       | 100.0       |                                  |
| December                     | 99.7         | 101.2                            | 99.0                                       | 100.0                 | 92.7  | 100.3  | 100.0      | 99.2        | 99.9          | 100.0                  | 100.0       | 100.0       |                                  |
| 2016                         |              |                                  |  |                       |   |  |            |             |               |                        |             |             |                                  |
| January                      | 106.3        | 112.6                            | 100.0                                      | 100.0                 | 104.2   | 100.0  | 100.0      | 105.0       | 100.0         | 100.0                  | 100.0       | 100.0       |                                  |
| February                     | 100.0        | 100.0                            | 100.0                                      | 100.0                 | 100.0   | 100.0  | 100.0      | 100.0       | 100.0         | 100.0                  | 100.0       | 100.0       | 100.0                            |
| March                        | 99.8         | 100.4                            | 99.6                                       | 99.6                  | 96.8  | 100.0  | 100.0      | 103.0       | 100.0         | 100.0                  | 100.0       | 100.0       | 100.0                            |
| April                        | 99.5         | 102.2                            | 99.6                                       | 100.0                 | 95.5  | 100.0  | 100.0      | 98.7        | 100.0         | 100.0                  | 100.0       | 100.0       | 100.0                            |
| May (P)                      | 100.1        | 104.1                            | 99.6                                       | 100.0                 | 93.6  | 100.0  | 100.0      | 101.9       | 100.0         | 100.0                  | 100.0       | 100.0       | 100.0                            |
| <b>Percentage Change (P)</b> |              |                                  |  |                       |   |  |            |             |               |                        |             |             |                                  |
| May 2016 over Apr 2016       | 0.6%         | 1.9%                             | 0.0%                                       | 0.0%                  | -2.0%   | 0.0%   | 0.0%       | 3.3%        | 0.0%          | 0.0%                   | 0.0%        | 0.0%        | 0.0%                             |
| May 2016 over May 2015       | 4.7%         | 19.2%                            | 5.4%                                       | 0.5%                  | -17.5%  | -1.7%  | 4.4%       | -6.9%       | -0.1%         | 0.0%                   | 0.0%        | 0.0%        |                                  |

**LOCAL ITEMS UNDERLYING INDEX**

| Group                        | All Items    | Food and Non Alcoholic Beverages | Alcoholic Beverages, Tobacco and Narcotics | Clothing and Footwear | Housing,Water, Electricity, Gas and other Fuels | Furnishings, Household Equipment and Maintenance | Health     | Transport  | Communication | Recreation and Culture | Education   | Restaurants | Miscellaneous goods and services |
|------------------------------|--------------|----------------------------------|--|-----------------------|---|--|------------|------------|---------------|------------------------|-------------|-------------|----------------------------------|
| <b>Weights</b>               | <b>185.5</b> | <b>76.1</b>                      | <b>n.a</b>                                 | <b>6.0</b>            | <b>n.a</b>                                      | <b>3.9</b>                                       | <b>1.0</b> | <b>3.4</b> | <b>51.5</b>   | <b>n.a</b>             | <b>12.3</b> | <b>22.4</b> | <b>8.8</b>                       |
| Ave - 2013                   | 97.2         | 100.3                            |  | 86.6                  | 93.4  | 103.4  | 80.0       | 100.0      |               | 100.0                  |             | 85.6        |                                  |
| Ave - 2014                   | 98.3         | 99.7                             |  | 96.3                  | 98.3  | 100.8  | 80.0       | 100.0      |               | 100.0                  |             | 92.1        |                                  |
| Ave - 2015                   | 99.9         | 100.3                            |  | 97.6                  | 98.8  | 101.3  | 91.7       | 100.0      |               | 100.0                  |             | 98.7        |                                  |
| 2015                         |              |                                  |  |                       |   |  |            |            |               |                        |             |             |                                  |
| May                          | 100.5        | 100.9                            |  | 99.5                  | 98.4  | 101.7  | 80.0       | 100.0      |               | 100.0                  |             | 100.0       |                                  |
| June                         | 100.6        | 100.7                            |  | 100.0                 | 99.0  | 101.7  | 100.0      | 100.0      |               | 100.0                  |             | 100.0       |                                  |
| July                         | 100.6        | 100.8                            |  | 100.0                 | 99.0  | 101.7  | 100.0      | 100.0      |               | 100.0                  |             | 100.0       |                                  |
| August                       | 100.6        | 100.8                            |  | 100.0                 | 99.0  | 101.7  | 100.0      | 100.0      |               | 100.0                  |             | 100.0       |                                  |
| September                    | 100.7        | 101.0                            |  | 100.0                 | 99.0  | 101.7  | 100.0      | 100.0      |               | 100.0                  |             | 100.0       |                                  |
| October                      | 100.3        | 100.3                            |  | 100.0                 | 98.8  | 101.7  | 100.0      | 100.0      |               | 100.0                  |             | 100.0       |                                  |
| November                     | 100.7        | 101.1                            |  | 100.0                 | 100.0   | 100.0  | 100.0      | 100.0      |               | 100.0                  |             | 100.0       |                                  |
| December                     | 100.1        | 100.2                            |  | 100.0                 | 98.4  | 100.3  | 100.0      | 100.0      |               | 100.0                  |             | 100.0       |                                  |
| 2016                         |              |                                  |  |                       |   |  |            |            |               |                        |             |             |                                  |
| January                      | 100.8        | 101.3                            |  | 100.0                 | 100.0   | 100.0  | 100.0      | 100.0      |               | 100.0                  |             | 100.0       |                                  |
| February                     | 100.0        | 100.0                            |  | 100.0                 | 100.0   | 100.0  | 100.0      | 100.0      | 100.0         | 100.0                  | 100.0       | 100.0       | 100.0                            |
| March                        | 99.9         | 99.8                             |  | 99.6                  |   | 100.0  | 100.0      | 100.0      | 100.0         |                        | 100.0       | 100.0       | 100.0                            |
| April                        | 100.1        | 100.2                            |  | 100.0                 |   | 100.0  | 100.0      | 100.0      | 100.0         |                        | 100.0       | 100.0       | 100.0                            |
| May (P)                      | 100.1        | 100.2                            |  | 100.0                 |   | 100.0  | 100.0      | 100.0      | 100.0         |                        | 100.0       | 100.0       | 100.0                            |
| <b>Percentage Change (P)</b> |              |                                  |  |                       |   |  |            |            |               |                        |             |             |                                  |
| May 2016 over Apr 2015       | 0.0%         | 0.0%                             |  | 0.0%                  |   | 0.0%   | 0.0%       | 0.0%       | 0.0%          |                        | 0.0%        | 0.0%        | 0.0%                             |
| May 2016 over May 2015       | -0.4%        | -0.8%                            |  | 0.5%                  |   | -1.7%  | 25.0%      | 0.0%       | n.a           |                        | n.a         | 0.0%        | n.a                              |

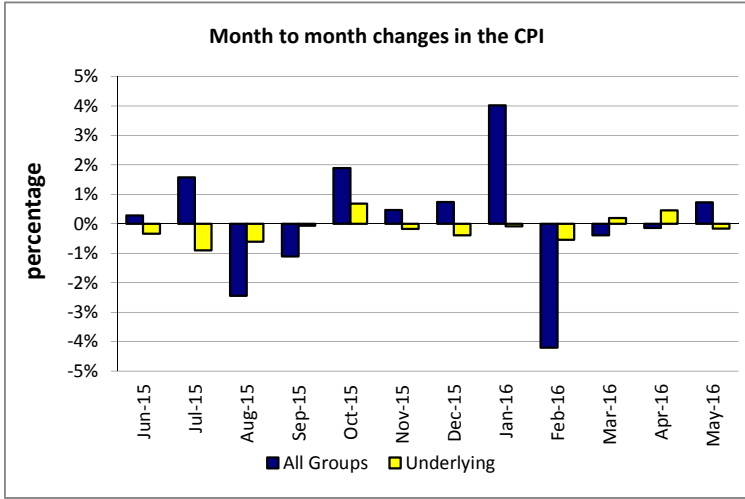
Source : Samoa Bureau Statistics

(P): Provisional figures

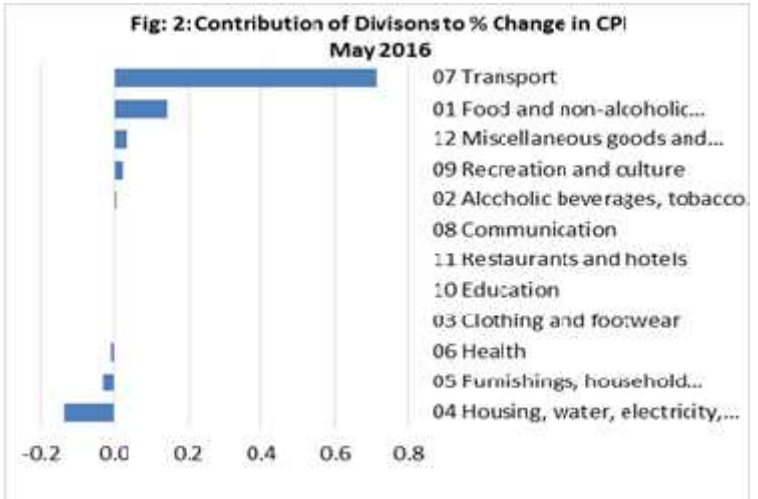
Note: n.a. Not applicable



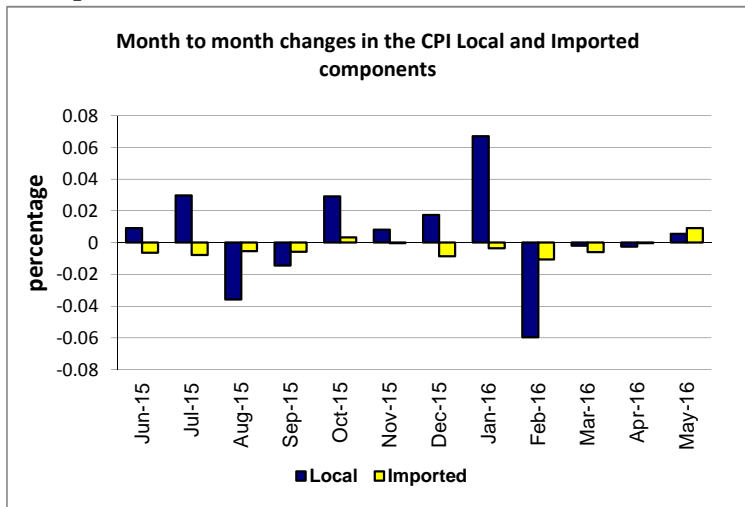
**Graph.1**



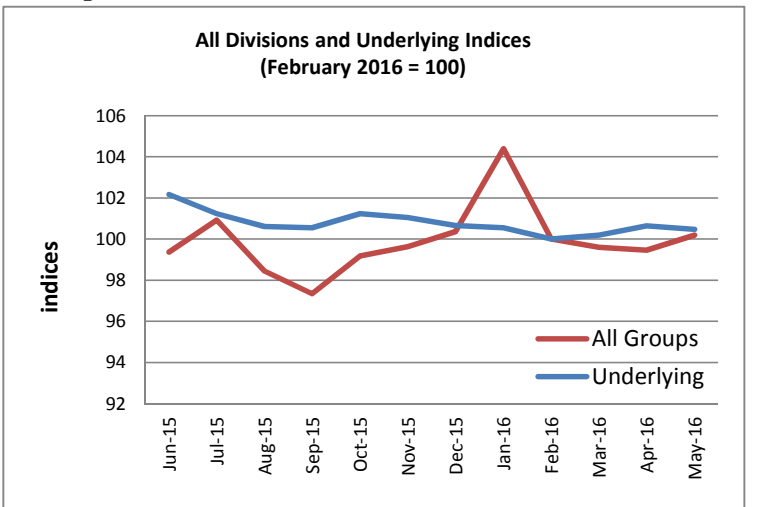
**Graph.2**



**Graph.3**



**Graph.4**



**Graph.5**

