

Please address all correspondence to the Government Statistician
 In reply, please quote the file reference



File Ref: IAS Q4/15

GOVERNMENT OF SAMOA

SAMOA BUREAU OF STATISTICS

International Arrival Statistics FOURTH QUARTER 2015

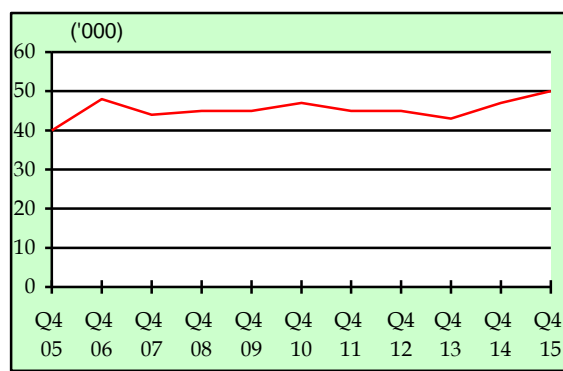
HIGHLIGHTS OF THE QUARTER

This quarter compared with fourth quarter 2014:

- Total arrivals (50,173) were up by 8 percent.
- Total visitors (39,028) were up by 7 percent.
- More visitors arrived from New Zealand (up by 1,671), USA (up by 454) and Australia (up by 228) but fewer visitors arrived from American Samoa (down by 748).
- Samoa residents departed on more trips to New Zealand (up by 2,701), American Samoa (up by 534) and Australia (up by 67) but fewer to USA (down by 7).
- Samoa residents departed on a total of 15,753 trips, down by 3 percent.

As usual, Air being the most preferred mode of travel to Samoa, accounting for 97.5 percent (47,214) of total arrivals, while those that arrived by Sea accounted for the remaining 2.5 percent (2,959).

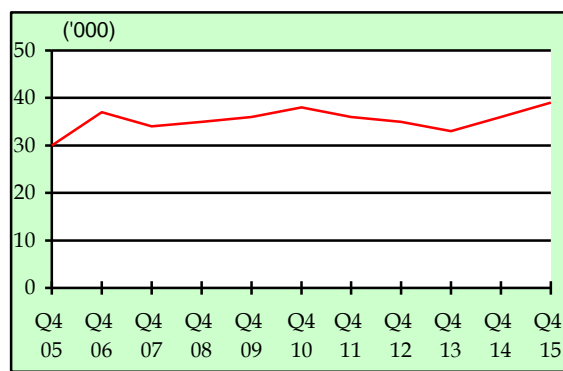
Fig. 1.1: 4th Quarter Total Arrivals, 2005 - 2015



1.2 TOTAL VISITORS

Total Visitors of 39,026 for the quarter under review revealed a decrease of 5.5 percent over the previous quarter, and an increase of 7.0 percent in comparison to the corresponding quarter of Oct – Dec 2014. (Refer Fig. 1.2).

Fig. 1.2: 4th Quarter Total Visitors, 2005 - 2015



Q4 2015	Number	Change from previous quarter	Change from previous year
All Arrivals	50,173	-3.9%	7.5%
All Visitors	39,028	-5.5%	7.0%

OVERVIEW

1. ARRIVALS

1.1 TOTAL ARRIVALS

The total International Arrival Statistics documented during the reference period (table 1) revealed a decrease of 3.9 percent when compared to the previous quarter (Jul - Sept 2015) and an increase of 7.5 percent over the corresponding quarter of Oct – Dec 2014. (Refer Fig. 1.1).

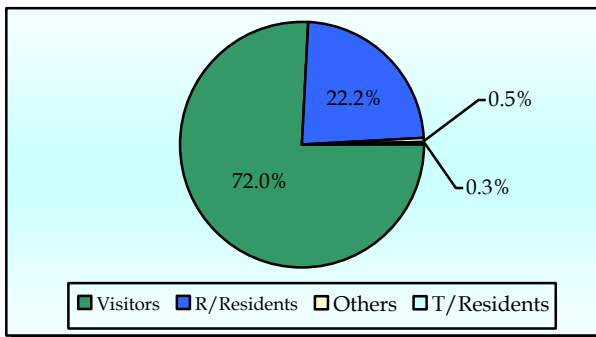
1.3 TOTAL ARRIVALS BY PURPOSE OF ENTRY

Visitors, including transit, made up the largest component of all arrivals with 38.8 percent recorded for males (19,454) and 38.2 percent for females (19,172).

Male and female returning residents made up 12.2 percent (6,126) and 10.0 (5,019) percent respectively of total arrivals. Temporary residents made up 0.2 percent (83) being males and 0.1 percent (69) being females. Other purposes of entry made up the remainder of 0.5 percent of total arrival. (Refer Fig. 1.3).

The majority of inbound travellers to Samoa during the reference period were aged between 20 years and 59 years.

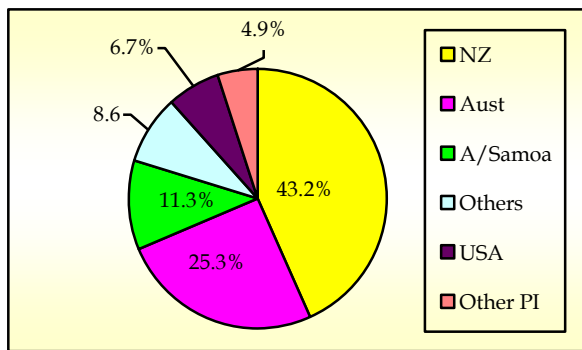
Fig. 1.3: Total Arrivals, by Purpose of Entry



1.4 VISITORS ARRIVALS BY COUNTRY OF USUAL RESIDENCE

New Zealand still remains as the leading country in visitors' arrival by country of usual residence (Table 3) accounting for 43.2 percent of total visitors with 16,842. Australia followed next with a distant 25.3 percent share (9,880) which is then trailed by American Samoa with 11.3 percent (4,421) while the United States of America anchored the principal source markets with a share of 6.7 percent (2,624). (Refer Fig. 1.4).

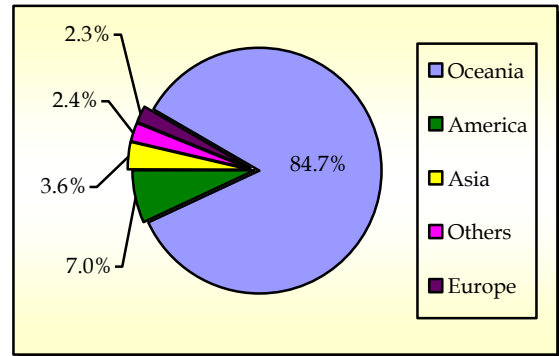
Fig. 1.4: Total Visitors, by Country of Usual Residence



1.5 VISITORS ARRIVALS BY REGION

The Oceanic region had the highest share of total visitors with 84.7 percent followed by America and Asia with 7.0 percent and 3.6 percent respectively. The European region showed the lowest share with 2.3 percent. (Refer Fig. 1.5)

Fig 1.5: Total Visitors, by Region



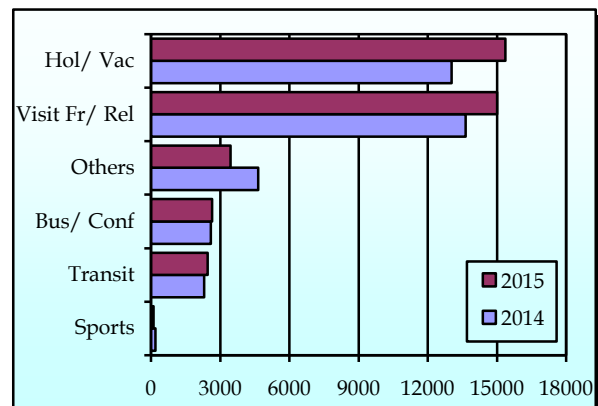
1.6 VISITORS BY PURPOSE OF VISIT

As illustrated in Table 4, New Zealand, Australia, American Samoa, and the United States of America constituted 86.5 percent of all visitors visiting Samoa while other countries round up the remaining 13.5 percent during the reference period.

Visitors that entered our shores on holiday/ vacation accounted for 39.4 percent of all visitors. Those that were here to visit friends and relatives accounted for 38.5 percent of all visitors, while Business and conference visitors made up 6.8 percent.

Those who were here for other purposes and transients bound for other destinations registered 6.3 and 8.8 percent respectively. Fig. 1.6 depicts total visitors by purpose of visit during the reference period compared to the corresponding quarter of 2014.

Fig 1.6: Total Visitors, by Purpose of Visit



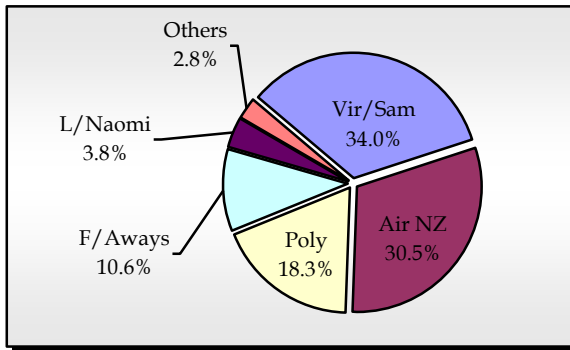
1.7 TOTAL VISITORS BY CARRIER

As tabulated in Table 5, Virgin Samoa (formerly known as Polynesian Blue) leads the way for arrivals by carriers' during the reference period with a 34.0 percent share (17,075 passengers) followed by Air New Zealand with a share of 30.5 percent (15,293 passengers).

Polynesian Airlines brought in 18.3 percent (9,187) of total arrivals while Fiji Airways (formerly known as Air Pacific) recorded a 10.6 percent share (5,297).

Fig. 1.7 illustrates total arrivals by carrier during the reference period.

Fig. 1.7: Total Arrivals, by Carrier



1.8 VISITORS DURATION AND PLACE OF STAY

The usual trend of visitor's duration of stay in Samoa (Table 6) is between 7 days and 30 days, as revealed in Fig 1.8.

68.2 percent (24,935) of total visitors reported staying in private accommodations or with families/relatives, while 28.4 percent (10,398) stayed in hotels/ motels. The remaining 3.4 percent (1,242) did not reveal their place of stay during the reference period. (Refer Fig. 1.9).

Fig. 1.8: Total Visitors, by Duration of Stay

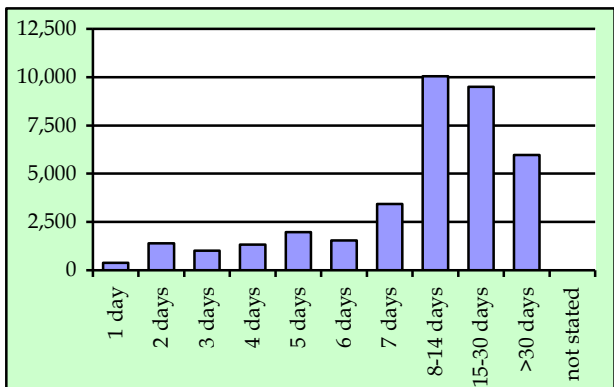
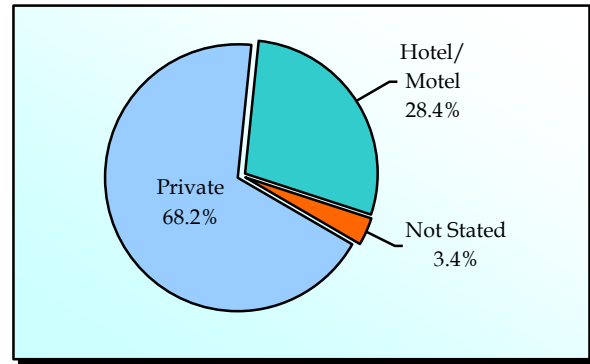


Fig. 1.9: Total Visitors, by Place of Stay



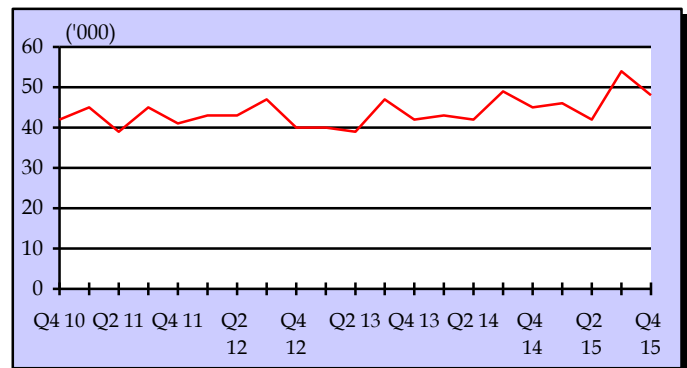
2. DEPARTURES

2.1 TOTAL DEPARTURES

The total International Departure Statistics recorded during the reference period (table 1) revealed a decrease of 11.8 percent when compared to the previous quarter (Jul – Sept 2015) and an increase of 6.1 percent over the corresponding quarter of Oct – Dec 2014. (Refer Fig. 2.1).

Furthermore, Air was the most preferred mode of travel away from Samoa, accounting for 94.5 percent (45,307) of total departures, while those that departed by sea accounted for the remaining 5.5 percent (2,644).

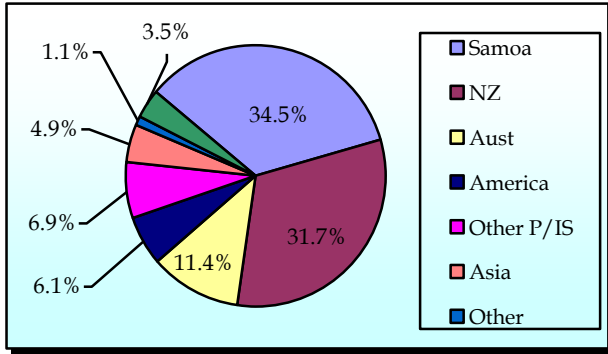
Fig. 2.1: Quarterly Total Departures, 2010 - 2015



2.2 TOTAL DEPARTURE BY NATIONALITY

Departures from Samoan, New Zealand, Australian, and American nationals (USA) accounted for 83.8 percent (40,177) of total departures (Table 7). Fig. 2.2 provides a more detailed graphical analysis of total departure by nationality during the reference period.

Fig. 2.2: Total Departures, by Nationality



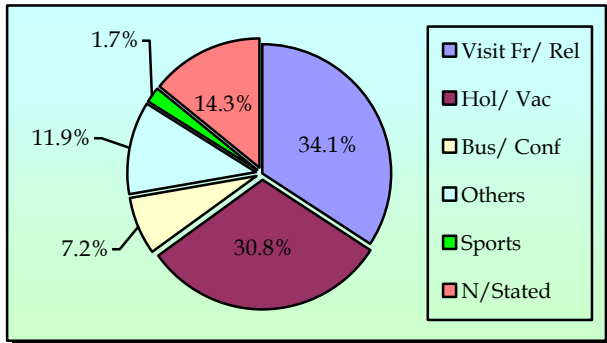
2.3 PURPOSE OF TRAVEL ABROAD

During the reference period, a total of 15,753 (Table 8) Samoa citizens left our shores on overseas trips. Of this total, 54.5 percent (8,593) were males and the remaining 45.5 percent (7,160) were females.

Visiting friends/ relatives abroad made up the largest component of all Samoa citizens travelling abroad accounting for 34.1 percent (5,368) followed by those that travelled overseas for Holiday/ Vacation with 30.8 percent (4,849).

Samoa citizens that travelled overseas for other purposes and business and conference reported 11.9 percent (1,882) and 7.2 percent (1,139) respectively. This is graphically illustrated in Fig. 2.3.

Fig. 2.3: Purpose of Travel Abroad



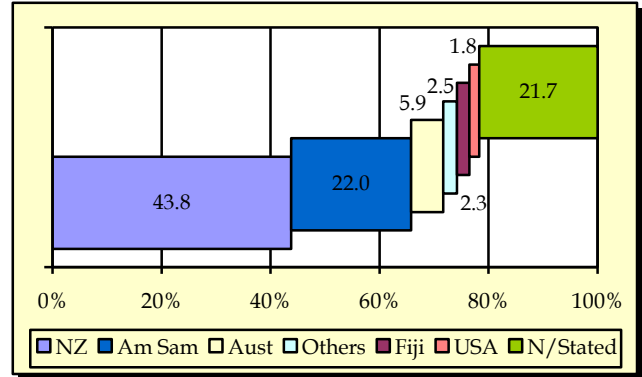
2.4 COUNTRY OF STAY ABROAD

The majority of Samoa citizens leaving our shores traveled to New Zealand as indicated by 43.8 percent (6,893) in Table 9 while 22.0 percent (3,466) of departing Samoa citizens traveled to American Samoa.

Australia made up 5.9 percent (934) while Fiji made up 2.3 percent (369) of Samoa citizens travelling to overseas countries.

Fig. 2.4 portrays a graphical impression of the country of stay abroad by Samoa Citizens during the reference period.

Fig. 2.4: Country of Stay Abroad



2.5 DEPARTURE BY OCCUPATION

As illustrated in Table 10, the majority of people leaving our shores were students with 16.7 percent (7,984) followed by professionals with 13.1 percent (6,283) then infant/retirees with 10.2 percent (4,914). A more comprehensive graphical analysis of departures by occupation for Samoa citizens is exhibited in Fig. 2.5.

Fig. 2.5: Departures by Occupation

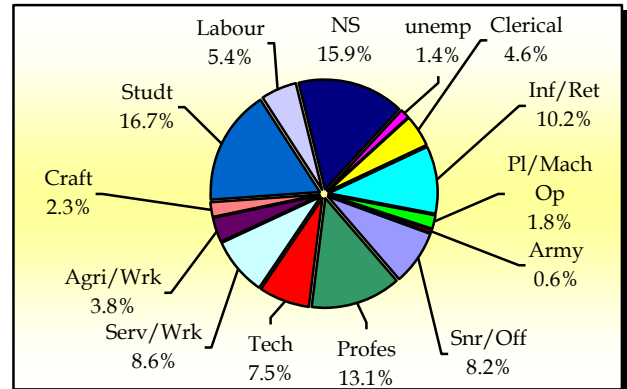
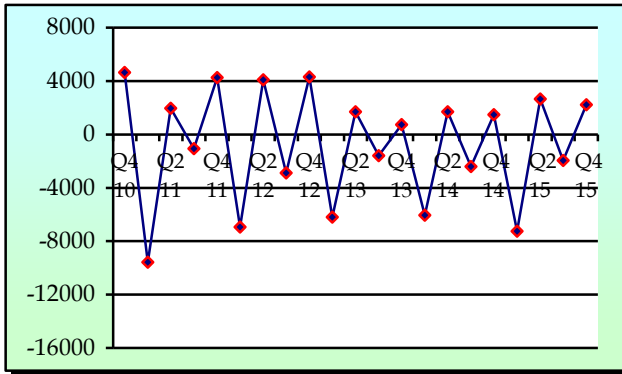


Table 10 further revealed that the majority of those leaving our shores have either completed or are currently attending Tertiary Education level, yielding 39.7 percent.

3. NET MIGRATION

During the reference period, net migration stood at 2,222 (Table 1) implying that there were more incoming travelers (arrivals) than out-going travelers (departures), thereby showing an increase of 51.4 percent when compared to the same period of 2014 where net migration stood at 1,468.

Fig.3.1: Quarterly Net Migration, 2010 - 2014



Detailed information for the reference period is attached in Tables 1 – 10 and the appendix shows longer time series.

BACKGROUND

The sourced documents for the compilation of International Arrival Statistics were the immigration arrival and departure card forms. These forms are completed by all incoming and outgoing travelers at the three local points of entry namely (1) Apia wharf (2) Faleolo and (3) Fagalii international airports.

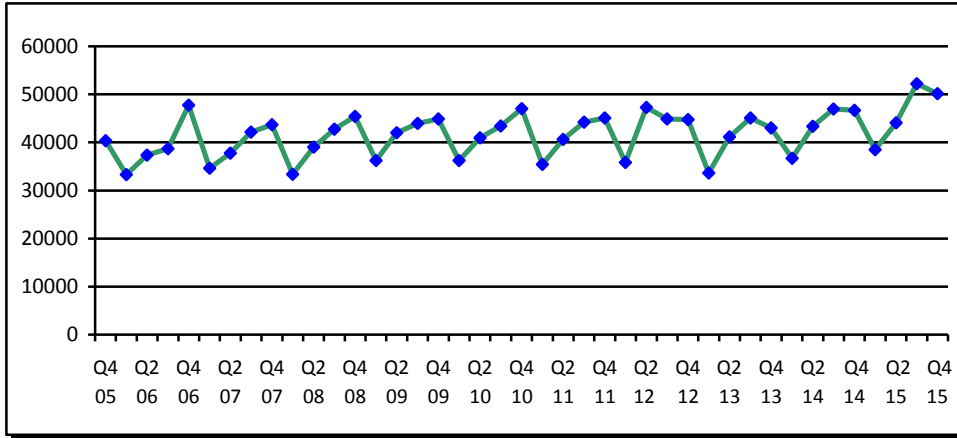
International arrival statistics are compiled on a monthly, quarterly and annual basis. These reports can also be extracted from our website: www.sbs.gov.ws

The migration report for the first quarter of 2016 will be released indefinitely due to other official commitments.

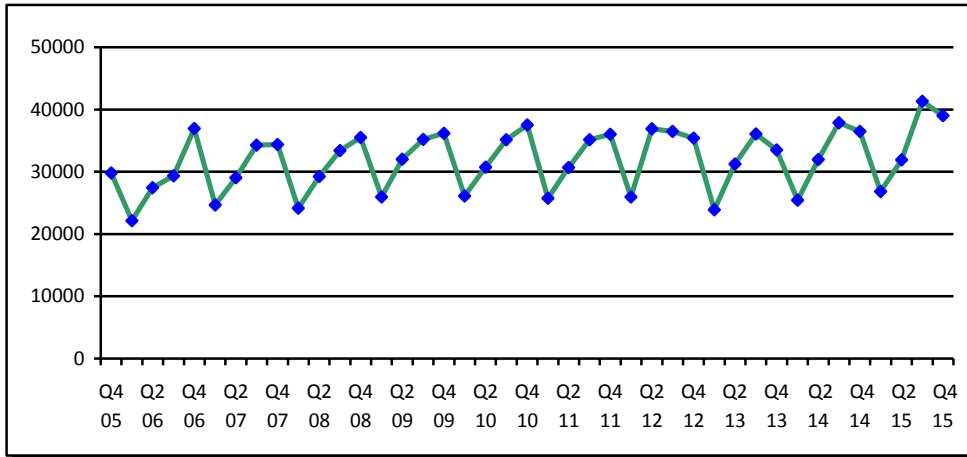
Muagututia Sefuiva Reupena
GOVERNMENT STATISTICIAN

APPENDIX

Graph 1: Quarterly Total Arrivals, 4th quarter 2005 – 4th quarter 2015



Graph 2: Quarterly Total Visitors, 4th quarter 2005 – 4th quarter 2015



Graph 3: Quarterly Total Departures, 4th quarter 2005 – 4th quarter 2015

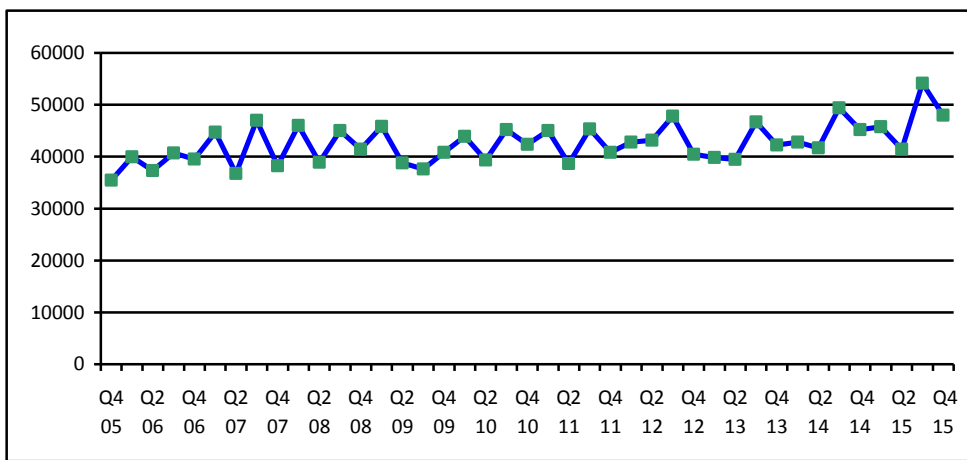


Table 1: Quarterly Arrival and Departure by Mode of Travel and Net Migration, 2004- 2015.

Period	Visitors Arrivals			Total Arrivals			Total Departures			Net Migration
	Air	Sea	Total	Air	Sea	Total	Air	Sea	Total	
2004	93,946	4,209	98,155	129,517	11,864	141,381	131,277	12,303	143,580	-2,199
2005	98,544	3,263	101,807	132,200	10,557	142,757	135,008	10,936	145,944	-3,187
2006	112,411	3,471	115,882	147,807	9,349	157,156	147,991	9,489	157,480	-324
2007	118,653	3,703	122,356	150,584	7,635	158,219	158,099	8,578	166,677	-8,458
2008	118,459	3,743	122,202	151,883	8,628	160,511	161,482	9,908	171,390	-10,879
2009	127,327	1,978	129,305	86,385	5,342	167,200	156,768	2,522	163,035	4,165
2010	126,970	2,530	129,500	162,052	5,539	167,591	164,426	6,326	170,752	-3,161
2011	124,706	2,898	127,604	159,660	5,738	165,398	163,605	6,216	169,821	-4,423
2012	131,945	2,752	134,697	167,211	5,509	172,720	167,842	6,297	174,139	-1,419
2013	122,171	2,502	124,673	157,542	5,335	162,877	162,333	5,885	168,218	-5,341
2014	128,623	3,172	131,795	166,045	7,638	173,713	170,848	8,272	179,017	-5,304
2015	135,012	4,031	139,043	176,782	8,248	185,030	181,687	8,523	190,210	-5,180
2,009										
3rd Quarter	34,626	564	35,190	42,535	1,419	43,954	36,436	1,190	37,626	6,328
4th Quarter	35,720	453	36,173	43,850	1,130	44,980	39,467	1,332	40,799	4,181
2010										
1st Quarter	25,662	463	26,125	35,293	919	36,212	42,563	1,335	43,898	-7,686
2nd Quarter	30,040	677	30,717	39,257	1,685	40,942	37,383	1,933	39,316	1,626
3rd Quarter	34,546	602	35,148	42,065	1,374	43,439	43,804	1,381	45,185	-1,746
4th Quarter	36,722	788	37,510	45,437	1,561	46,998	40,676	1,677	42,353	4,645
2011										
1st Quarter	24,972	794	25,766	34,010	1,440	35,450	43,290	1,737	45,027	-9,577
2nd Quarter	30,092	590	30,682	39,208	1,399	40,607	37,148	1,509	38,657	1,950
3rd Quarter	34,478	666	35,144	42,889	1,355	44,244	43,784	1,516	45,300	-1,056
4th Quarter	35,164	848	36,012	43,553	1,544	45,097	39,383	1,454	40,837	4,260
2012										
1st Quarter	25,439	497	25,936	34,835	995	35,830	41,389	1,377	42,766	-6,936
2nd Quarter	35,886	988	36,874	45,168	2,085	47,253	40,819	2,346	43,165	4,088
3rd Quarter	35,890	607	36,497	43,867	1,017	44,884	46,659	1,101	47,760	-2,876
4th Quarter	34,730	660	35,390	43,341	1,412	44,753	38,975	1,473	40,448	4,305
2013										
1st Quarter	23,293	580	23,873	32,484	1,140	33,624	38,219	1,602	39,821	-6,197
2nd Quarter	30,594	651	31,245	39,785	1,365	41,150	37,728	1,719	39,447	1,703
3rd Quarter	35,463	593	36,056	43,688	1,421	45,109	45,349	1,349	46,698	-1,589
4th Quarter	32,821	678	33,499	41,585	1,409	42,994	41,037	1,215	42,252	742
2014										
1st Quarter	24,910	551	25,461	35,301	1,415	36,716	41,142	1,628	42,770	-6,054
2nd Quarter	31,255	728	31,983	41,286	2,077	43,363	39,242	2,434	41,676	1,687
3rd Quarter	36,754	1,119	37,873	44,966	2,014	46,980	47,334	2,051	49,385	-2,405
4th Quarter	35,704	774	36,478	44,522	2,132	46,654	43,024	2,162	45,186	1,468
2015										
1st Quarter	26,203	599	26,802	36,931	1,581	38,512	43,794	1,976	45,770	-7,258
2nd Quarter	31,053	864	31,917	41,731	2,381	44,112	39,510	2,590	42,100	2,012
3rd Quarter	40,451	845	41,296	50,906	1,327	52,233	53,076	1,313	54,389	-2,156
4th Quarter	37,305	1,723	39,028	47,214	2,959	50,173	45,307	2,644	47,951	2,222

Source: Ministry of the Prime Minister and Cabinet - Immigration Division, Ministry for Revenue - Customs Division, and Samoa Bureau of Statistics.

1: Provisional figures

■: Revised Figures

Table 2: Arrivals by Age, Purpose of Entry and Gender, Fourth Quarter 2015 ¹

AGE	Purpose of Visit																	
	TOTAL			Visitors			Returning Residents			Transit			Temporary Resident			Others		
	TOTAL	Male	Female	Total	Male	Female	Total	Male	Female	Total	Male	Female	Total	Male	Female	Total	Male	Female
TOTAL	50,173	25,785	24,388	36,173	17,962	18,211	11,145	6,126	5,019	2,453	1,492	961	152	83	69	250	122	128
0 - 4	2,599	1,312	1,287	2,071	1,026	1,045	420	229	191	90	47	43	11	5	6	7	5	2
5 - 9	2,487	1,182	1,305	2,137	1,009	1,128	266	134	132	64	33	31	3	1	2	17	5	12
10 - 14	2,436	1,190	1,246	2,141	1,043	1,098	213	106	107	58	28	30	4	4	0	20	9	11
15 - 19	3,067	1,427	1,640	2,401	1,095	1,306	556	287	269	85	36	49	5	1	4	20	8	12
20 - 24	4,222	1,992	2,230	2,988	1,317	1,671	1,020	551	469	185	114	71	9	3	6	20	7	13
25 - 29	4,225	2,120	2,105	3,028	1,396	1,632	935	556	379	233	153	80	13	6	7	16	9	7
30 - 34	3,974	2,069	1,905	2,722	1,336	1,386	968	560	408	257	159	98	7	4	3	20	10	10
35 - 39	3,652	2,020	1,632	2,467	1,325	1,142	931	529	402	229	154	75	12	4	8	13	8	5
40 - 44	3,970	2,172	1,798	2,653	1,387	1,266	1,038	607	431	233	150	83	17	12	5	29	16	13
45 - 49	4,307	2,267	2,040	2,900	1,455	1,445	1,089	618	471	285	177	108	16	9	7	17	8	9
50 - 54	4,351	2,278	2,073	3,013	1,558	1,455	1,060	559	501	247	144	103	11	8	3	20	9	11
55 - 59	3,783	1,985	1,798	2,627	1,368	1,259	962	502	460	173	101	72	7	6	1	14	8	6
60 - 64	2,829	1,520	1,309	1,975	1,035	940	698	392	306	133	79	54	8	4	4	15	10	5
65 - 69	2,180	1,186	994	1,585	864	721	471	248	223	100	64	36	14	7	7	10	3	7
70 - 74	1,176	607	569	834	433	401	283	136	147	44	29	15	6	4	2	9	5	4
75 +	915	458	457	631	315	316	235	112	123	37	24	13	9	5	4	3	2	1
% Distribution ²	100.0	51.4	48.6	72.1	35.8	36.3	22.2	12.2	10.0	4.9	3.0	1.9	0.3	0.2	0.1	0.5	0.2	0.3

Source: Ministry of the Prime Minister and Cabinet - Immigration Division, Ministry for Revenue - Customs Division and Samoa Bureau of Statistics.

Note : Total visitors include transit.

: Sports was re-introduced again in the Purpose of Visit Category as of August 2008.

1: Provisional figures

2: Figures are subject to rounding errors

Table 3: Visitors Arrivals by Country of Usual Residence and Mode of Travel, Fourth Quarter 2015 ¹

Country of Usual Residence	Mode of Travel		TOTAL	Percentage ²
	Air	Sea		
OCEANIA	32,054	985	33,039	84.7
American Samoa	3,980	441	4,421	11.3
Fiji	821	34	855	2.2
Cook Island	20	0	20	0.1
Other Pacific Is	647	374	1,021	2.6
New Zealand	16,748	94	16,842	43.2
Australia	9,838	42	9,880	25.3
EUROPE	862	28	890	2.3
United Kingdom	329	12	341	0.9
Scandinavia	40	4	44	0.1
Benelux	32	0	32	0.1
Germany	276	0	276	0.7
Other Europe	185	12	197	0.5
AMERICA	2,563	186	2,749	7.0
U.S.A	2,451	173	2,624	6.7
Canada	112	13	125	0.3
ASIA	1,136	283	1,419	3.6
Japan	157	2	159	0.4
China	565	102	667	1.7
Other Asia	374	171	545	1.4
Korea	40	8	48	0.1
OTHERS	677	241	918	2.4
NOT STATED	13	0	13	0.0
TOTAL	37,305	1,723	39,028	
PERCENTAGE DISTRIBUTION	95.6	4.4	100.0%	100%

Source: Ministry of the Prime Minister and Cabinet - Immigration Division, Ministry for Revenue - Customs Division, and Samoa Bureau of Statistics.

1: Provisional figures.

2: Figures are subject to rounding errors

- Note:** (i) Visitors refer to all person visiting Samoa other than returning residents and also expatriates who are employed and living in Samoa (**include transit**).
- (ii) Visitors also include Samoan citizens whose country of usual residence are country abroad.
- (iii) **Scandinavia**- refers to countries of Norway, Sweden, Finland and Denmark.
- (iv) **Benelux:** - refers to countries of Belgium, Netherlands and Luxembourg.

Table 4: Total Visitors by Usual Residence and Purpose of Visit, Fourth Quarter 2015 ¹

Usual Residence	Purpose of Visit								
	TOTAL	% ²	Holiday/ Vacation	Business/ Conference	Visit Friends/ Relatives	Sports	Transit	Others	Not Stated
TOTAL	39,028		15,360	2,647	15,009	114	2,453	2,295	1,150
American Samoa	4,421	11.3	1,044	200	1,829	13	657	189	489
Fiji	855	2.2	147	277	169	8	146	80	28
Cook Island	20	0.1	3	10	3	0	0	0	4
Other Pacific Is	1,021	2.6	120	195	240	1	279	118	68
New Zealand	16,842	43.2	6,980	933	7,410	41	311	947	220
Australia	9,880	25.3	4,576	459	4,200	38	137	363	107
United Kingdom	341	0.9	214	39	33	1	26	26	2
Scandinavia	44	0.1	33	1	7	0	2	1	0
Benelux	32	0.1	25	0	5	0	2	0	0
Germany	276	0.7	234	9	14	0	6	13	0
Other Europe	197	0.5	150	14	16	0	12	4	1
U.S.A.	2,624	6.7	972	239	796	7	236	321	53
Canada	125	0.3	73	6	16	0	18	6	6
Japan	159	0.4	49	67	15	1	8	17	2
China	667	1.7	177	78	77	1	223	59	52
Other Asia	545	1.4	126	69	63	2	149	102	34
Other Countries	918	2.4	411	41	114	0	227	46	79
Korea	48	0.1	23	9	2	1	6	3	4
Not Stated	13	0.3	3	1	0	0	8	0	1
Percentage Distribution ²	100.0		39.4	6.8	38.5	0.3	6.3	5.9	2.9

Source: Ministry of the Prime Minister and Cabinet - Immigration Division, Ministry for Revenue - Customs Division and Samoa Bureau of Statistics.

Note : Total visitors include transit.

: Sports was re-introduced again in the Purpose of Visit Category as of August 2008.

1: Provisional figures

2: Figures are subject to rounding errors

Table 5: Total Arrivals by Carrier and Purpose of Entry, Fourth Quarter 2015 ¹

Carrier	TOTAL	Purpose of Entry				
		Returning Residents	% ²	Total Visitors	% ²	
TOTAL	50,173	100%	11,145	22.2	39,028	77.8
AIR	47,214	94.1	9,909	19.7	37,305	74.4
Virgin Samoa ³	17,075	34.0	2,972	5.9	14,103	28.1
Polynesian	9,187	18.3	2,977	5.9	6,210	12.4
Inter Island	37	0.1	6	0.0	31	0.1
Air New Zealand	15,293	30.5	2,798	5.6	12,495	24.9
Fiji Airways ⁴	5,297	10.6	1,137	2.3	4,160	8.3
Other Air Carrier	325	0.6	19	0.0	306	0.6
SEA	2,959	5.9	1,236	2.5	1,723	3.4
Lady Naomi	1,924	3.8	1,097	2.2	827	1.6
Yacht	0	0.0	0	0.0	0	0.0
Other Sea Carrier	1,035	2.1	139	0.3	896	1.8

Source: Ministry of the Prime Minister and Cabinet - Immigration Division, Ministry for Revenue - Customs Division and Samoa Bureau of Statistics.

Note: Total visitors include transit.

- 1: Provisional figures
- 2: Figures are subject to rounding errors
- 3: Polynesian Blue is now called Virgin Samoa
- 4: Air Pacific is now called Fiji Airways

Table 6: Visitors by Duration of Stay and Place of Stay, Fourth Quarter 2015¹

Duration of Stay	Place of Stay			
	TOTAL	Hotel/Motel	Private	Not Stated
TOTAL	36,575	10,398	24,935	1,242
1day	386	183	176	27
2days	1,399	777	344	278
3days	1,006	543	440	23
4days	1,332	693	592	47
5days	1,977	1,066	845	66
6days	1,538	978	490	70
7days	3,424	1,759	1,541	124
8-14days	10,050	3,125	6,667	258
15-30days	9,495	810	8,548	137
31-60days	1,526	77	1,423	26
61-90days	307	14	291	2
91-180days	201	11	184	6
181-365days	125	16	105	4
> Year	3,806	345	3,287	174
Not Stated	3	1	2	0
Percentage Distribution	100.0	28.4	68.2	3.4

Source: Ministry of the Prime Minister and Cabinet - Immigration Division,
Ministry for Revenue - Customs Division and Samoa Bureau of Statistics.

Note: Visitors here, exclude transit.

1: Provisional figures

Table 7: Departures by Nationality, Citizenship and Gender, Fourth Quarter 2015 ¹

Nationality	TOTAL			Samoa Citizen			Temporary Residents			Visitors			Other Citizens			
	TOTAL	Male	Female	Total	Male	Female	Total	Male	Female	Total	Male	Female	Total	Male	Female	
TOTAL	47,951	100.0	25,060	22,891	15,753	8,593	7,160	1,144	608	536	29,661	14,976	14,685	1,393	883	510
Samoa	16,560	34.5	8,947	7,613	15,597	8,513	7,084	119	52	67	757	342	415	87	40	47
American Samoa	1,165	2.4	554	611	6	5	1	22	10	12	1,068	502	566	69	37	32
Fiji	1,055	2.2	618	437	2	0	2	105	53	52	846	510	336	102	55	47
Cook Island	16	0.0	5	11	0	0	0	1	0	1	9	2	7	6	3	3
Other Pacific Is	1,098	2.3	682	416	4	1	3	64	37	27	903	551	352	127	93	34
New Zealand	15,191	31.7	7,260	7,931	110	64	46	403	206	197	14,341	6,818	7,523	337	172	165
Australia	5,487	11.4	2,707	2,780	20	4	16	175	100	75	5,229	2,567	2,662	63	36	27
United Kingdom	353	0.7	192	161	2	1	1	8	5	3	341	184	157	2	2	0
Scandinavia	125	0.3	67	58	0	0	0	6	4	2	119	63	56	0	0	0
Benelux	16	0.0	8	8	0	0	0	1	0	1	14	7	7	1	1	0
Germany	323	0.7	156	167	0	0	0	6	4	2	312	150	162	5	2	3
Other Europe	870	1.8	448	422	1	0	1	25	14	11	831	425	406	13	9	4
United States	2,939	6.1	1,466	1,473	10	4	6	115	60	55	2,701	1,337	1,364	113	65	48
Canada	146	0.3	70	76	0	0	0	1	1	0	145	69	76	0	0	0
Japan	214	0.4	152	62	0	0	0	29	21	8	179	127	52	6	4	2
Other Asia	1,105	2.3	874	231	0	0	0	25	15	10	809	626	183	271	233	38
Others	240	0.5	151	89	0	0	0	12	8	4	217	133	84	11	10	1
China	829	1.7	558	271	0	0	0	18	11	7	647	436	211	164	111	53
Korea	75	0.2	56	19	0	0	0	0	0	0	75	56	19	0	0	0
Not Stated	144	0.3	89	55	1	1	0	9	7	2	118	71	47	16	10	6
% Distribution ²	100.0	52.3	47.7	32.9	17.9	28.6	2.4	1.3	1.1	61.9	31.2	30.6	2.9	1.8	1.1	

Source: Ministry of the Prime Minister and Cabinet - Immigration Division, Ministry for Revenue - Customs Division and Samoa Bureau of Statistics.

1: Provisional figures

2: Figures are subject to rounding errors

Table 8: Departures by Purpose of Travel and Gender (Samoa-citizen-only), Fourth Quarter 2015 ¹

Purpose of Travel	Samoa Citizen			
	TOTAL	Male	Female	
TOTAL	15,753	% ²	8,593	7,160
Holiday/ Vacation	4,849	30.8	2,498	2,351
Visit Friends/ Relatives	5,368	34.1	2,729	2,639
Business/Conference	1,139	7.2	690	449
Sporting/Activities	265	1.7	209	56
Others	1,882	11.9	1,212	670
Not Stated	2,250	14.3	1,255	995
% Distribution ²	100		54.5	45.5

Source: Ministry of the Prime Minister and Cabinet - Immigration Division,
 Ministry for Revenue - Customs Division and Samoa Bureau of Statistics.

1: Provisional figures

2: Figures are subject to rounding errors

Table 9: Departures by Place of Stay Abroad and Gender (Samoa-citizen-only), Fourth Quarter 2015 ¹

Place of Stay Abroad	TOTAL	Gender		
			Male	Female
TOTAL	15,753	% ²	8,593	7,160
American Samoa	3,466	22.0	1,907	1,559
Fiji	369	2.3	175	194
Cook Island	7	0.0	4	3
Other Pacific Is	171	1.1	118	53
New Zealand	6,893	43.8	3,809	3,084
Australia	934	5.9	497	437
United Kingdom	21	0.1	13	8
Scandinavia	16	0.1	8	8
Benelux	2	0.0	0	2
Germany	2	0.0	2	0
Other Europe	43	0.3	24	19
United States of America	276	1.8	129	147
Canada	3	0.0	2	1
Japan	5	0.0	4	1
Other Asia	58	0.4	24	34
Others	23	0.1	14	9
China	33	0.2	21	12
Korea	8	0.1	1	7
Not Stated	3,423	21.7	1,841	1,582

Source: Ministry of the Prime Minister and Cabinet - Immigration Division, Ministry of Revenue - Customs Division and Samoa Bureau of Statistics.

1: Provisional figures

2: Figures are subject to rounding errors

Table 10: Departures by Occupation, Education and Gender, Fourth Quarter 2015 ¹

OCCUPATION	TOTAL			Primary			Secondary			Tertiary			Kindy & None			Not Stated			
	TOTAL	Male	Female	Total	Male	Female	Total	Male	Female	Total	Male	Female	Total	Male	Female	Total	Male	Female	
TOTAL	47,951	100.0	25,060	22,891	8,030	4,251	3,779	13,169	7,272	5,897	18,612	9,374	9,238	836	441	395	7,304	3,722	3,582
Armed Forces	264	0.6	245	19	3	3	0	166	162	4	69	57	12	0	0	0	26	23	3
Senior Official	3,933	8.2	2,251	1,682	306	179	127	719	428	291	2,451	1,387	1,064	0	0	0	457	257	200
Professional	6,283	13.1	3,174	3,109	189	124	65	815	426	389	4,345	2,153	2,192	0	0	0	934	471	463
Technician	3,605	7.5	2,139	1,466	533	305	228	568	363	205	2,326	1,349	977	0	0	0	178	122	56
Clerical	2,190	4.6	889	1,301	246	102	144	488	187	301	1,292	538	754	0	0	0	164	62	102
Services workers	4,104	8.6	1,964	2,140	383	194	189	1,379	685	694	1,811	833	978	0	0	0	531	252	279
Agricultural work	1,830	3.8	1,625	205	308	263	45	982	906	76	395	326	69	0	0	0	145	130	15
Craft/tradework	1,096	2.3	911	185	169	134	35	468	410	58	319	243	76	0	0	0	140	124	16
Plant/machinery	847	1.8	675	172	99	83	16	385	311	74	189	147	42	0	0	0	174	134	40
Labours	2,609	5.4	937	1,672	454	180	274	1,122	435	687	658	216	442	0	0	0	375	106	269
Students	7,984	16.7	3,674	4,310	3,134	1,536	1,598	2,266	1,064	1,202	1,769	697	1,072	66	34	32	749	343	406
Infant/retired	4,914	10.2	2,463	2,451	940	469	471	995	498	497	1,010	533	477	688	363	325	1,281	600	681
Unemployed	678	1.4	182	496	71	28	43	324	86	238	177	44	133	0	0	0	106	24	82
Not Stated	7,614	15.9	3,931	3,683	1,195	651	544	2,492	1,311	1,181	1,801	851	950	82	44	38	2,044	1,074	970

Source: Ministry of the Prime Minister and Cabinet - Immigration Division, Ministry for Revenue - Customs Division and Samoa Bureau of Statistics

1: Provisional figures