

Please address all correspondence
To Government Statistician
In reply, please quote the file reference



File Ref: CPI 3/16

GOVERNMENT OF SAMOA

SAMOA BUREAU OF STATISTICS

CONSUMER PRICE INDEX March 2016

Key findings:

The Consumer Price Index for March 2016 increased by 0.2 percent compared to the previous month.

- The Food and Non Alcoholic Beverages index increased by 0.9 percent.
- Transport index also increased by 0.7 percent.
- Housing, Water, Electricity, Gas and other Fuels decreased by 4.9 percent.
- The Average Annual Inflation for the year ended March 2016 was 0.3 percent.

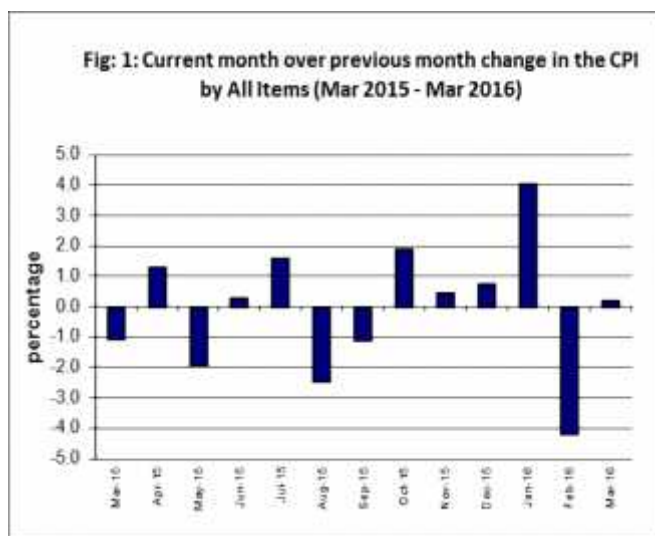
In the year to March 2016, the CPI rose 0.5 percent.

SUMMARY

The Consumer Price Index for March 2016 was 0.2 percent higher than February 2016, and was 0.5 percent higher than March 2015.

The increase of the Local Goods component by 1.2 percent from the previous month was due to higher prices for market staples and fresh fish, which was also the main contributor to the increase of 0.2 percent in the All Items Consumer Price Index.

The Imported Goods Component recorded a decrease of 1.7 percent compared to the previous month. Figure 1 shows the month to month percentage changes in the Consumer Price Index by all Divisions from March 2015 to March 2016.

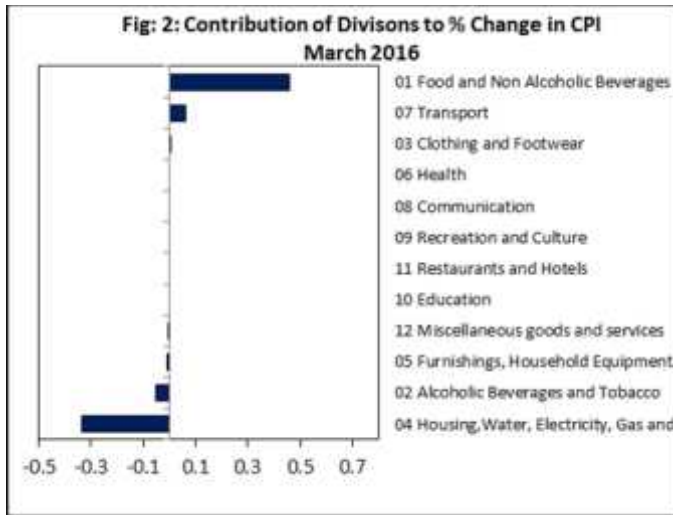


Source : Samoa Bureau of Statistics

Total All Divisions Contribution

Food and Non Alcoholic Beverages divisions along with Transport were the main contributors to the overall increase of 0.2 percent in the All Division Consumer Price Index.

On the other hand, there were offsetting negative contributions from Housing, Water, Electricity, Gas and other Fuels division with 0.34 and Alcoholic Beverages and Tobacco division with 0.05 percent respectively.



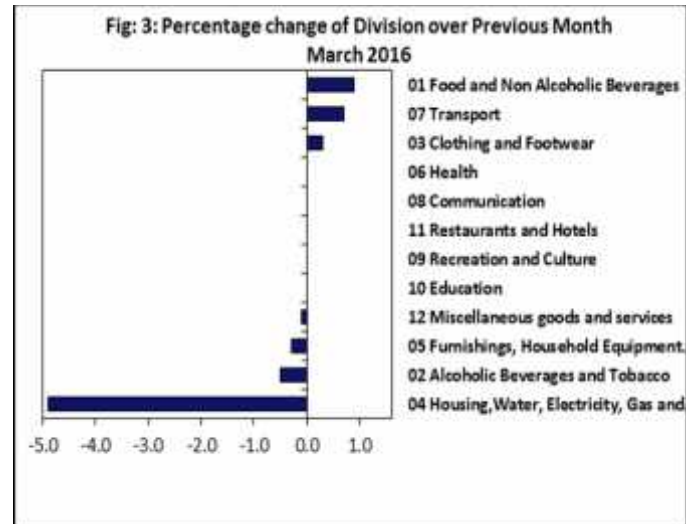
Source : Samoa Bureau of Statistics

Consumer Price Index (% Change)

The increases recorded for the Food and Non Alcoholic Beverages index from the previous month registered 0.9 percent, Transport index with 0.7 percent and Clothing and Footwear index with 0.3 percent.

On the other hand, Housing, Water, Electricity, Gas and other Fuels index recorded a decrease of 4.9 percent. Alcoholic Beverages and Tobacco also registered decrease 0.5 percent, while Furnishing, Household Equipment and Maintenance and Miscellaneous Goods and Services indices both recorded slight decreases of 0.3 and 0.1 percent respectively.

No changes were recorded for the Health, Communication, Recreation and culture, Education and Restaurants indices. Graphically presented in Fig 3 is the March 2016 percentage change for all divisions from February 2016.



Source : Samoa Bureau of Statistics

Local Goods Component

The Local Goods Component of the Consumer Price Index registered an increase of 1.2 percent when compared to the previous month. This increase was mainly due to higher prices recorded for fresh fish (piece and large), taro leaves, breadfruit, chinese cabbage and airline fare Apia-Auckland-Apia.

Imported Goods Component

Decreased prices recorded for mutton flap, brown sugar and fuel (petrol and diesel) have resulted in the 1.7 percent decrease in the Imported Good Component.

Food and Non Alcoholic Beverages Index

Higher prices recorded for chicken leg quarter, fresh fish (piece and large), taro leaves, breadfruit and chinese cabbage is reflected in the 0.9 percent increase in the Food and Non Alcoholic Beverages index.



Transport Index

Increased price recorded for airline fare (Apia-Auckland-Apia) is reflected in the 0.7 percent increase in the Transport index.

Housing, Water, Electricity, Gas and other Fuels Index

The 4.9 percent decrease in the Housing, Water, Electricity, Gas and other Fuels index was a result of the lower prices recorded for electricity (kwh), natural gas and kerosene.

Alcoholic Beverages and Tobacco Index

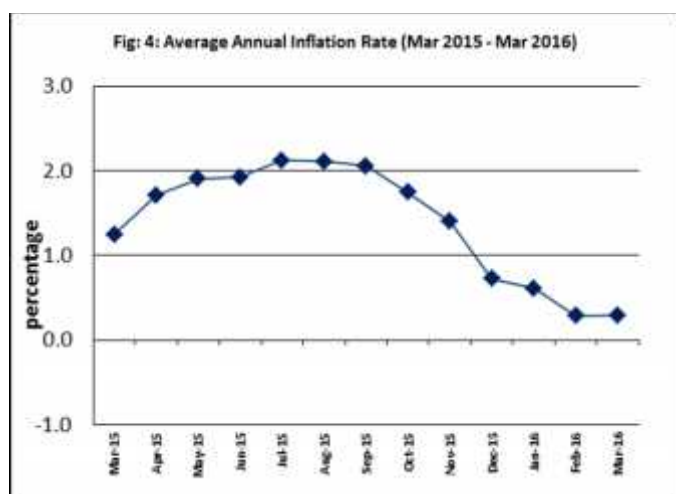
A decrease of 0.5 percent in the Alcoholic Beverages and Tobacco index was a reflection of the lower prices recorded for beer.

Underlying Indices ^{1/}

The All Items Underlying Index for March 2016 registered a decrease of 1.1 percent when compared to February 2016, and also a decrease of 5.5 percent when compared to March 2015. The Imported Items Underlying Index registered a decrease of 1.5 percent, while the Local Items Underlying Index recorded an increase of 0.1 percent.

Inflation Rate

The average annual inflation rate for the year ended March 2016 was 0.3 percent. For the twelve months ending March 2015 the inflation rate was 1.2 percent. Presented in Fig 4 is the Average annual inflation rate (March 2015 - March 2016).



Source : Samoa Bureau of Statistics

The attached Tables and Graphs provide the user with more detailed analysis.

Technical Notes:

The Consumer Price (CPI) measures the rate of inflation for Samoa. It is designed to measure the change in prices for the goods purchased by households in Samoa. The CPI measures the change in prices by comparing the prices for a basket of goods and services at the collection period with the price for the same goods in a base period.

The basket of goods that is priced is based on the average expenditures of households as recorded in the Household Income and Expenditure Survey (HIES). The HIES survey identifies how much households spend on different items. The more households spend on an item on average, the more important it is to the price index, and the higher the weight in the index.

^{1/} Quarterly movements in the 'headline' CPI series can be volatile. This volatility reflects price changes in particular items that may be due, among other factors, to fluctuations in commodity markets and agricultural conditions, policy changes, or seasonal or infrequent price resetting.

Underlying inflation is a measure of inflation that excludes certain items that face volatile price movements. Underlying inflation eliminates products that can have temporary price shocks because these shocks can diverge from the overall trend of inflation and give a false measure of inflation.

SAMOA BUREAU OF STATISTICS

Economic Statistics Division
FMFM II Building, Level 1
P O Box 1151
Apia, Samoa

Phone: (685) 62014/62015
Fax: (685) 24675
E-mail: info.stats@sbs.gov.ws
Website: www.sbs.gov.ws

Date of release: 11th April 2016.

The next Consumer Price Index will be released on 11th May 2016.


Ailepata Manila
ACTING GOVERNMENT STATISTICIAN

Table 1. CONSUMER PRICE INDEX.
(Base Period : Average Prices August 2010 = 100)

Group	All Items	Food and Non Alcoholic Beverages	Alcoholic Beverages and Tobacco	Clothing and Footwear	Housing, Water, Electricity, Gas and other Fuels	Furnishings, Household Equipment, and Maintenance	Health	Transport	Communication	Recreation and Culture	Education	Restaurants	Miscellaneous goods and services
<i>Weights</i>	1000	502	97	17	78	31	16	97	58	34	31	15	24
Ave - 2013	108.6	111.1	110.8	113.5	107.2	101.4	96.1	111.8	100.0	98.5	101.6	101.6	100.7
Ave - 2014	108.1	107.3	114.2	117.8	110.8	100.2	108.4	117.2	100.0	99.0	101.6	109.4	98.4
Ave - 2015	108.9	110.9	116.1	117.5	102.7	101.0	111.2	110.0	99.9	99.1	103.4	117.2	95.7
2015													
March	108.8	111.4	116.6	118.7	107.7	100.2	110.4	100.8	100.0	99.1	103.4	118.7	96.2
April	110.2	112.8	115.0	119.3	108.1	100.3	111.4	109.3	100.0	99.1	103.4	118.7	95.7
May	108.1	107.9	115.1	119.4	108.1	100.2	111.6	113.3	100.0	99.1	103.4	118.7	95.4
June	108.4	110.3	116.2	119.1	97.7	100.9	112.2	111.3	100.0	99.1	103.4	118.7	95.1
July	110.1	112.3	114.5	119.2	101.1	101.1	111.4	116.7	100.0	99.1	103.4	118.7	95.1
August	107.4	109.1	113.7	118.8	94.8	102.0	111.4	111.6	99.8	99.2	103.4	118.7	95.5
September	106.2	105.8	116.6	117.9	94.7	102.0	111.4	113.4	99.8	99.2	103.4	118.7	95.5
October	108.2	109.5	116.6	116.9	101.4	101.9	111.4	109.8	99.8	99.2	103.4	118.7	95.8
November	108.7	111.3	117.9	118.0	101.6	101.2	111.4	104.6	99.8	99.2	103.4	118.7	96.0
December	109.5	114.6	118.0	117.6	91.9	101.5	111.4	103.4	99.8	99.2	103.4	118.7	95.9
2016													
January	113.9	121.0	119.1	117.8	100.5	101.4	111.4	106.6	99.9	99.2	103.4	118.7	98.0
February	109.1	113.2	118.9	119.1	96.9	101.3	111.4	101.2	99.9	99.2	103.4	118.7	96.5
March (P)	109.3	114.2	118.3	119.4	92.2	101.0	111.4	101.9	99.9	99.2	103.4	118.7	96.4
Percentage Change (P)													
Mar 2016 over Feb 2016	0.2	0.9	-0.5	0.3	-4.9	-0.3	0.0	0.7	0.0	0.0	0.0	0.0	-0.1
Mar 2016 over Mar 2015	0.5	2.5	1.5	0.6	-14.4	0.8	0.9	1.1	-0.1	0.1	0.0	0.0	0.2
ALL ITEMS UNDERLYING INDEX													
Group	All Items	Food and Non Alcoholic Beverages	Alcoholic Beverages and Tobacco	Clothing and Footwear	Housing, Water, Electricity, Gas and other Fuels	Furnishings, Household Equipment, and Maintenance	Health	Transport	Communication	Recreation and Culture	Education	Restaurants	Miscellaneous goods and services
<i>Weights</i>	480	348	<i>n.a.</i>	17	17	31	14	13	<i>n.a.</i>	2	<i>n.a.</i>	15	24
Ave - 2013	104.7	106.0		113.5	99.4	101.4	95.5	97.4		87.0		101.6	100.7
Ave - 2014	105.9	107.4		117.8	99.6	100.2	94.4	95.7		87.7		109.4	98.4
Ave - 2015	103.4	103.6		117.5	99.2	101.0	97.6	94.8		90.3		117.1	95.7
2015													
March	105.6	106.7		118.7	98.2	100.2	96.6	96.4		89.5		118.7	96.2
April	105.6	106.6		119.3	99.1	100.3	97.8	97.6		89.5		118.7	95.7
May	103.4	103.5		119.4	99.1	100.2	98.1	97.6		89.5		118.7	95.4
June	103.1	103.1		119.1	99.0	100.9	98.8	94.9		89.5		118.7	95.1
July	102.1	101.9		119.2	99.2	101.1	97.8	93.0		89.5		118.7	95.1
August	101.5	100.9		118.8	99.4	102.0	97.9	93.0		91.9		118.7	95.5
September	101.4	100.8		117.9	99.6	102.0	97.9	93.0		91.9		118.7	95.5
October	102.1	101.9		116.9	98.5	101.9	97.9	93.0		91.9		118.7	95.8
November	101.9	101.6		118.0	99.1	101.2	97.9	93.0		91.9		118.7	96.0
December	101.5	101.0		117.6	99.0	101.5	97.9	93.0		91.9		118.7	95.9
2016													
January	101.4	100.8		117.8	98.5	101.4	97.9	93.0		91.9		118.7	98.0
February	100.9	100.1		119.1	97.5	101.3	97.9	93.0		91.9		118.7	96.5
March (P)	99.8	98.7		119.4	95.1	101.0	97.9	94.6		91.9		118.7	96.4
Percentage Change (P)													
Mar 2016 over Feb 2016	-1.1	-1.4		0.3	-2.5	-0.3	0.0	1.7		0.0		0.0	-0.1
Mar 2016 over Mar 2015	-5.5	-7.5		0.5	-3.2	0.8	1.3	-1.8		2.6		0.0	0.2

Source : Samoa Bureau Statistics
(P): Provisional figures
Note: n.a. Not applicable

Commodities	Weight	Unit	2015			2016		
			Jan	Feb	Mar	Jan	Feb	Mar (P)
Magnesium Trisillicate	3.6	120mls	7.67	7.67	7.67	7.67	7.67	7.67
Cough Mixture	3.6	100mls	9.40	9.40	9.40	9.40	9.40	9.40
Hospital Charge	2.1	per night	10.00	10.00	10.00	10.00	10.00	10.00
Transport								
Petrol	39.1	ltr	2.78	2.42	2.16	2.31	2.18	2.07
Labour charge car repair	9.1	min crg	51.67	51.67	51.67	51.67	51.67	51.67
Air Fares Apia-Auckland-Apia	7.8	return	2449.35	1268.20	1115.95	1797.60	1285.41	1719.50
Air Fares Fagalii-Pago	7.8	return	395.00	395.00	395.00	395.00	395.00	395.00
Bus Fares Apia-Motootua Hosp	3.7	per trip	1.30	1.30	1.30	1.30	1.30	1.30
Bus Fares Apia-Malua	3.7	per trip	2.60	2.60	2.60	2.60	2.60	2.60
Bus Fares Apia-Falefa	3.7	per trip	3.70	3.70	3.70	3.70	3.70	3.70
Car Tyre 205/70R(14)	3.7	size 14	220.00	220.00	220.00	197.50	197.50	207.50
Taxi Fares PO-Motootua Hosp	3.3	per trip	4.80	4.80	4.80	4.80	4.80	4.80
Taxi Fares Po-Malua	3.3	per trip	31.30	31.30	31.30	31.30	31.30	31.30
Taxi Fares PO-Falefa	3.3	per trip	43.20	43.20	43.20	43.20	43.20	43.20
Diesel	2.8	ltr	2.83	2.50	2.24	2.27	2.00	1.79
Car Registration 1500-2000 cc	2.0	ann rate	352.00	352.00	352.00	352.00	352.00	352.00
Boat Fares Mulifanua-Salelologa	1.3	one way	12.00	12.00	12.00	12.00	12.00	12.00
Communication								
Telephone local call	23.6	1 min	0.06	0.06	0.06	0.06	0.06	0.06
Telephone NZ call	10.6	3 mins	2.55	2.55	2.55	2.55	2.55	2.55
Telephone USA call	10.6	3 mins	5.35	5.35	5.35	5.37	5.37	5.37
Telephone Rental	10.6	monthly	24.15	24.15	24.15	24.15	24.15	24.15
Internet Prepaid Rates (a)	2.6	30 mins	5.10	5.10	5.10	4.90	4.90	4.90
PO Box rental (small box)	0.2	ann rate	80.00	80.00	80.00	80.00	80.00	80.00
Recreation and Culture								
National Lotto (a)	23.6	ticket	7.00	7.00	7.00	7.00	7.00	7.00
Tattslotto	3.8	ticket	13.50	13.50	13.50	13.50	13.50	13.50
News Paper Samoa Observer	2.7	each	2.50	2.50	2.50	2.50	2.50	2.50
Education								
School Fees Primary	10.5	Yr 4	10.00	10.00	10.00	10.00	10.00	10.00
School Fees Secondary	8.1	Yr 10	50.00	50.00	50.00	50.00	50.00	50.00
School Fees Primary	7.6	Yr 8	20.00	20.00	20.00	20.00	20.00	20.00
School Fees (NUS registration)	5.1	tertiary	292.00	292.00	292.00	292.00	292.00	292.00
Restaurants								
Meal (Fish & Chips)	11.0	1 serve	9.00	9.00	10.00	10.00	10.00	10.00
Meal (Pinati)	3.7	1 serve	3.00	3.00	3.00	3.00	3.00	3.00
Miscellaneous goods and services								
Toilet soap	7.6	90g	1.04	1.04	1.04	1.07	1.03	1.03
Diapers (16kg & over)	7.2	24pkt	37.80	37.90	37.90	38.02	38.02	38.02
Toilet Paper	3.6	roll	0.90	0.90	0.90	0.90	0.90	0.90

Source : Samoa Bureau Statistics

(a) : New commodity from August 2010

(b) : Average price across all brands

(P) : Provisional figures

Table 3. IMPORTED GOODS COMPONENT OF THE CONSUMER PRICE INDEX
(Base Period : Average Prices August 2010 = 100)

Group	All Items	Food and Non Alcoholic Beverages	Alcoholic Beverages and Tobacco	Clothing and Footwear	Housing, Water, Electricity, Gas and other Fuels	Furnishings, Household Equipment and Maintenance	Health	Transport	Communication	Recreation and Culture	Education	Restaurants	Miscellaneous goods and services
Weights	424.8	272.0	17.1	10.9	17.5	22.7	12.8	46.8	n.a.	1.3	n.a.	n.a.	23.7
<i>Ave - 2013</i>	106.9	106.2	112.1	110.9	101.7	103.0	95.2	119.7		77.0			100.7
<i>Ave - 2014</i>	108.2	108.2	113.4	110.0	101.7	102.3	94.0	120.8		78.2			98.4
<i>Ave - 2015</i>	102.1	103.1	105.4	108.4	97.7	103.2	96.4	99.5		82.9			95.7
2015													
March	103.6	107.2	112.2	108.9	95.9	102.2	96.4	88.1		81.5			96.2
April	104.5	107.0	112.2	109.8	97.7	102.1	97.7	96.5		81.5			95.7
May	102.2	102.8	112.2	109.9	97.7	102.0	98.0	100.6		81.5			95.4
June	101.6	102.3	109.7	109.1	97.5	103.0	97.0	98.8		81.5			95.1
July	100.8	100.7	99.9	109.2	98.2	103.2	95.9	104.1		81.5			95.1
August	100.2	99.5	96.2	108.6	98.5	104.5	95.9	106.8		85.7			95.5
September	99.7	99.3	96.2	107.2	98.1	104.4	95.9	102.9		85.7			95.5
October	100.0	100.9	96.2	105.6	96.0	104.4	95.9	98.0		85.7			95.8
November	100.0	100.3	102.3	107.3	96.9	104.0	95.9	98.1		85.7			96.0
December	99.1	99.9	103.0	106.7	96.2	104.2	95.9	92.9		85.7			95.9
2016													
January	98.7	99.2	103.7	107.0	95.8	104.2	95.9	92.2		85.7			98.0
February	97.7	98.7	102.3	109.0	93.6	104.1	95.9	87.3		85.7			96.5
March (P)	96.0	96.8	103.7	109.5	90.2	104.1	95.9	83.6		85.7			96.4
Percentage Change (P)													
Mar 2016 over Feb 2016	-1.7	-1.9	1.4	0.5	-3.6	-0.1	0.0	-4.2		0.0			-0.1
Mar 2016 over Mar 2015	-7.3	-9.7	-7.5	0.5	-6.0	1.9	-0.5	-5.1		5.1			0.2
IMPORTED ITEMS UNDERLYING INDEX													
Group	All Items	Food and Non Alcoholic Beverages	Alcoholic Beverages and Tobacco	Clothing and Footwear	Housing, Water, Electricity, Gas and other Fuels	Furnishings, Household Equipment and Maintenance	Health	Transport	Communication	Recreation and Culture	Education	Restaurants	Miscellaneous goods and services
Weights	362.8	272.0	n.a.	10.9	15.4	22.7	12.8	4.0	n.a.	1.3	n.a.	n.a.	23.7
<i>Ave - 2013</i>	105.0	106.2		110.9	98.9	103.0	95.2	113.2		77.0			100.7
<i>Ave - 2014</i>	106.2	108.2		110.0	98.7	102.3	94.0	107.4		78.2			98.4
<i>Ave - 2015</i>	102.3	103.1		108.4	98.2	103.2	96.4	104.4		82.9			95.7
2015													
March	105.4	107.2		108.9	97.2	102.2	96.4	109.6		81.5			96.2
April	105.3	107.0		109.8	98.1	102.1	97.7	113.9		81.5			95.7
May	102.2	102.8		109.9	98.1	102.0	98.0	113.9		81.5			95.4
June	101.7	102.3		109.1	98.0	103.0	97.0	104.9		81.5			95.1
July	100.4	100.7		109.2	98.2	103.2	95.9	98.5		81.5			95.1
August	99.6	99.5		108.6	98.4	104.5	95.9	98.6		85.7			95.5
September	99.4	99.3		107.2	98.6	104.4	95.9	98.6		85.7			95.5
October	100.5	100.9		105.6	97.5	104.4	95.9	98.6		85.7			95.8
November	100.1	100.3		107.3	98.0	104.0	95.9	98.6		85.7			96.0
December	99.8	99.9		106.7	98.0	104.2	95.9	98.6		85.7			95.9
2016													
January	99.4	99.2		107.0	97.4	104.2	95.9	98.6		85.7			98.0
February	99.0	98.7		109.0	96.3	104.1	95.9	98.6		85.7			96.5
March (P)	97.5	96.8		109.5	93.6	104.1	95.9	104.1		85.7			96.4
Percentage Change (P)													
Mar 2016 over Feb 2016	-1.5	-1.9		0.5	-2.8	-0.1	0.0	5.5		0.0			-0.1
Mar 2016 over Mar 2015	-7.5	-9.7		0.5	-3.6	1.9	-0.5	-5.1		5.1			0.2

Source : Samoa Bureau Statistics

(P): Provisional figures

Note: n.a. Not applicable

Table 4. LOCAL GOODS COMPONENT OF THE CONSUMER PRICE INDEX
(Base Period : Average Prices August 2010 = 100)

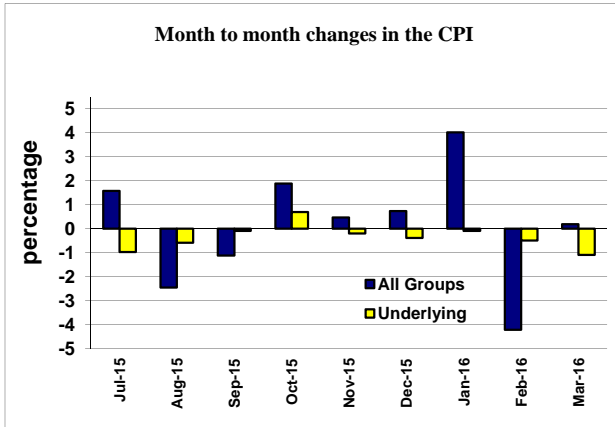
Group	All Items	Food and Non Alcoholic Beverages	Alcoholic Beverages and Tobacco	Clothing and Footwear	Housing, Water, Electricity, Gas and other Fuels	Furnishings, Household Equipment and Maintenance	Health	Transport	Communication	Recreation and Culture	Education	Restaurants	Miscellaneous goods and services
Weights	575.2	229.8	79.6	6.4	60.6	8.6	3.0	50.3	58.2	32.7	31.3	14.7	n.a.
Ave - 2013	109.8	116.9	110.5	117.9	108.8	97.1	100.0	104.4	100.0	99.4	101.6	101.6	
Ave - 2014	108.1	106.4	114.4	131.1	113.4	94.6	170.0	113.9	100.0	99.8	101.6	109.4	
Ave - 2015	114.0	120.0	118.4	133.0	104.1	95.1	174.4	119.8	99.9	99.8	103.4	117.1	
2015													
March	112.6	116.4	117.5	135.5	111.1	95.0	170.0	112.5	100.0	99.8	103.4	118.7	
April	114.4	119.7	115.6	135.5	111.1	95.5	170.0	121.3	100.0	99.8	103.4	118.7	
May	112.5	114.0	115.7	135.5	111.1	95.5	170.0	125.1	100.0	99.8	103.4	118.7	
June	113.5	119.7	117.6	136.2	97.8	95.5	177.5	123.0	100.0	99.8	103.4	118.7	
July	116.9	125.9	117.6	136.2	101.9	95.5	177.5	128.4	100.0	99.8	103.4	118.7	
August	112.7	120.4	117.4	136.2	93.7	95.5	177.5	116.0	99.8	99.8	103.4	118.7	
September	111.0	113.5	121.0	136.2	93.7	95.5	177.5	123.1	99.8	99.8	103.4	118.7	
October	114.3	119.8	121.0	136.2	102.9	95.5	177.5	120.6	99.8	99.8	103.4	118.7	
November	115.2	124.3	121.2	136.2	102.9	93.9	177.5	110.7	99.8	99.8	103.4	118.7	
December	117.2	131.9	121.2	136.2	90.7	94.2	177.5	113.3	99.8	99.8	103.4	118.7	
2016													
January	125.1	146.8	122.4	136.2	101.9	93.9	177.5	119.9	99.9	99.8	103.4	118.7	
February	117.6	130.4	122.4	136.2	97.8	93.9	177.5	114.2	99.9	99.8	103.4	118.7	
March (P)	119.1	134.7	121.4	136.2	92.7	92.8	177.5	118.9	99.9	99.8	103.4	118.7	
Percentage Change (P)													
Mar 2016 over Feb 2016	1.2	3.3	-0.8	0.0	-5.2	-1.2	0.0	4.1	0.0	0.0	0.0	0.0	
Mar 2016 over Mar 2015	5.8	15.7	3.3	0.5	-16.5	-2.3	4.4	5.7	-0.1	0.0	0.0	0.0	
LOCAL ITEMS UNDERLYING INDEX													
Group	All Items	Food and Non Alcoholic Beverages	Alcoholic Beverages and Tobacco	Clothing and Footwear	Housing, Water, Electricity, Gas and other Fuels	Furnishings, Household Equipment and Maintenance	Health	Transport	Communication	Recreation and Culture	Education	Restaurants	Miscellaneous goods and services
Weights	117.4	75.5	n.a.	6.4	1.2	8.6	0.9	9.1	n.a.	1.0	n.a.	14.7	n.a.
Ave - 2013	103.8	105.5		117.9	105.9	97.1	100.0	90.5		100.0		101.6	
Ave - 2014	105.0	104.8		131.1	111.5	94.6	100.0	90.5		100.0		109.4	
Ave - 2015	106.6	105.5		133.0	112.0	95.1	114.6	90.5		100.0		117.1	
2015													
March	106.5	104.9		135.5	111.5	95.0	100.0	90.5		100.0		118.7	
April	106.8	105.3		135.5	111.5	95.5	100.0	90.5		100.0		118.7	
May	107.3	106.1		135.5	111.5	95.5	100.0	90.5		100.0		118.7	
June	107.4	105.9		136.2	112.3	95.5	125.0	90.5		100.0		118.7	
July	107.4	106.0		136.2	112.3	95.5	125.0	90.5		100.0		118.7	
August	107.4	106.0		136.2	112.3	95.5	125.0	90.5		100.0		118.7	
September	107.5	106.2		136.2	112.3	95.5	125.0	90.5		100.0		118.7	
October	107.1	105.5		136.2	112.0	95.5	125.0	90.5		100.0		118.7	
November	107.5	106.3		136.2	113.4	93.9	125.0	90.5		100.0		118.7	
December	106.9	105.3		136.2	111.6	94.2	125.0	90.5		100.0		118.7	
2016													
January	107.7	106.5		136.2	113.4	93.9	125.0	90.5		100.0		118.7	
February	106.8	105.2		136.2	113.4	93.9	125.0	90.5		100.0		118.7	
March (P)	106.9	105.5		136.2	113.4	92.8	125.0	90.5		100.0		118.7	
Percentage Change (P)													
Mar 2016 over Feb 2016	0.1	0.3		0.0	0.0	-1.2	0.0	0.0		0.0		0.0	
Mar 2016 over Mar 2015	0.4	0.6		0.5	1.7	-2.3	25.0	0.0		0.0		0.0	

Source : Samoa Bureau Statistics

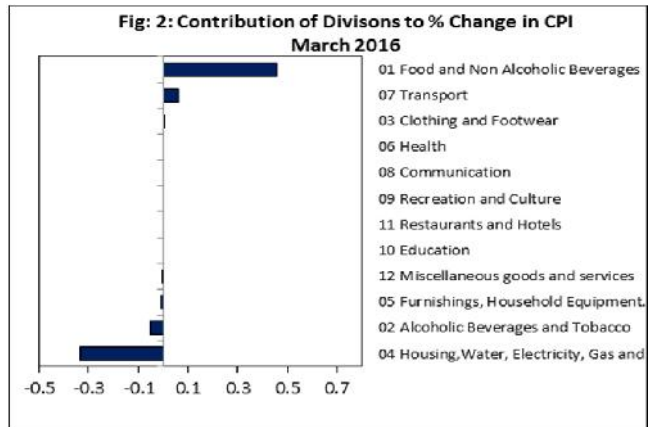
(P): Provisional figures

Note: n.a. Not applicable

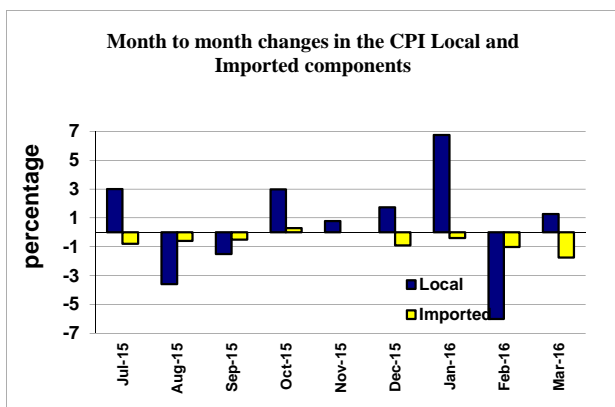
Graph.1



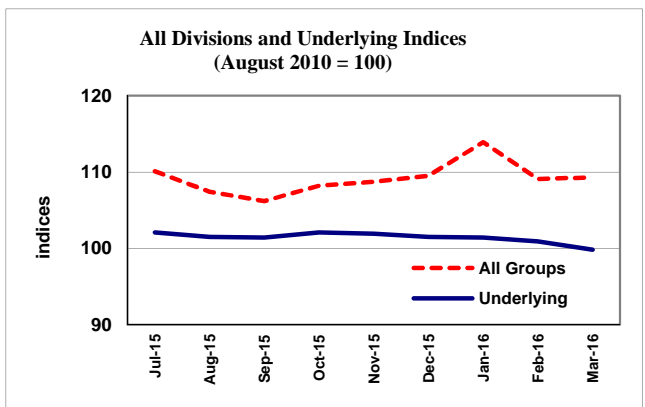
Graph.2



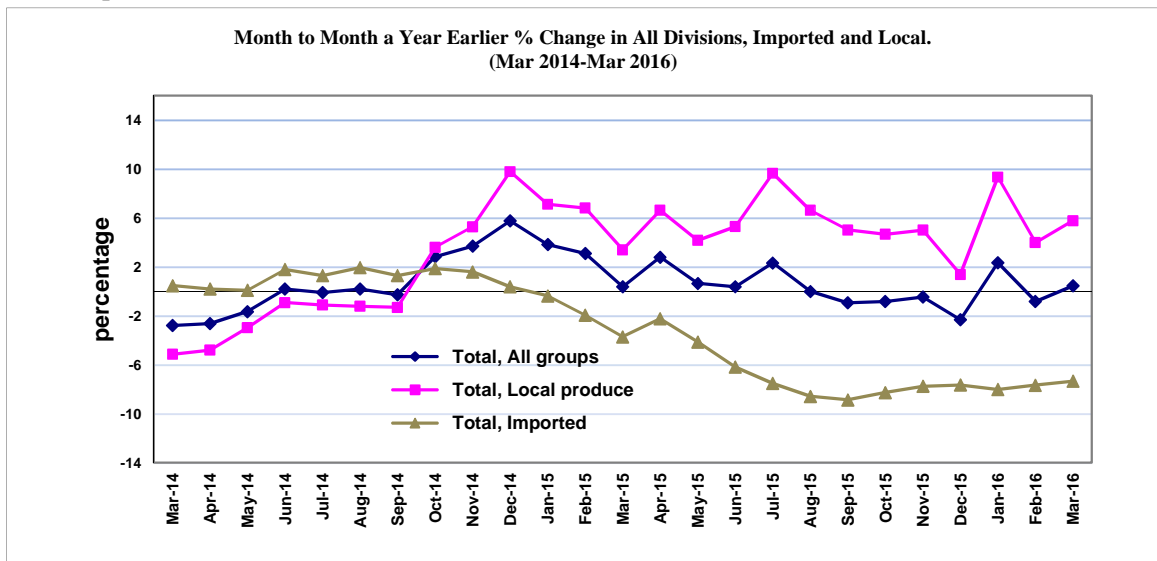
Graph.3



Graph.4



Graph 5



Source: Samoa Bureau of Statistics