

Please address all correspondence
To Government Statistician
In reply, please quote the file reference



File Ref: CPI 2/16

GOVERNMENT OF SAMOA

SAMOA BUREAU OF STATISTICS

CONSUMER PRICE INDEX February 2016

Key findings:

The Consumer Price Index for February 2016 decreased by 4.2 percent compared to the previous month.

- The Food and Non Alcoholic Beverages index decreased by 6.4 percent, driven down by lower prices for market staples and fresh fish.
- The continue decrease of oil prices internationally in February 2016 has pushed local fuel prices down as reflected in the 5.1 percent decline in the Transport index.
- Housing, Water, Electricity, Gas and other Fuels index decreased by 3.6 percent driven by reduced electricity price.
- The Average Annual Inflation for the year ended February 2016 was 0.3 percent.

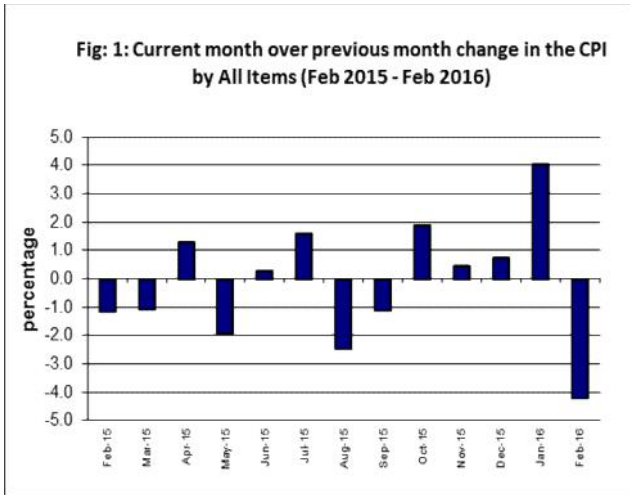
The CPI fell 0.8 percent from February 2015.

SUMMARY

The Consumer Price Index for February 2016 was 4.2 percent lower than in January 2016 and was 0.8 percent lower than February 2015.

The decrease of the Local Goods component by 6.0 percent reflects lower prices for local food, electricity (kwh) and airline fare which were also the main contributors to the decrease of 4.2 percent in the All Items Consumer Price Index.

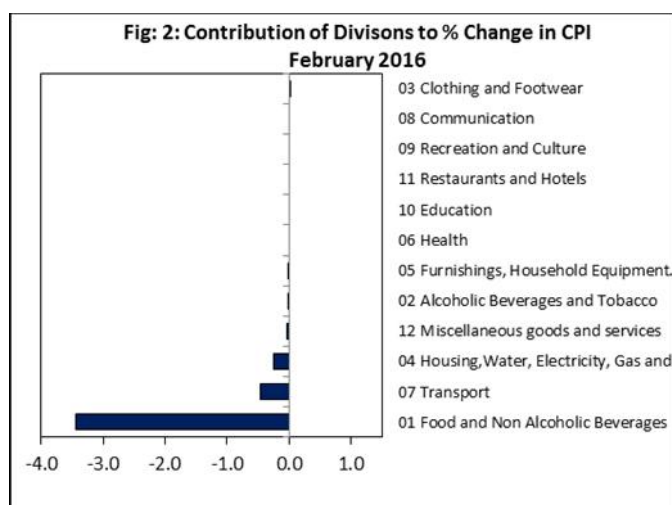
The Imported Goods Component also recorded a decrease of 1.1 percent over January 2016. Figure 1 shows the month to month percentage changes in the Consumer Price Index by All Divisions from February 2015 to February 2016.



Source : Samoa Bureau of Statistics

Total All Divisions Contribution

Food and Non Alcoholic Beverages, Transport along with Housing, Water, Electricity, Gas and other Fuels divisions were the main contributors to the overall decrease of 4.2 percent in the All Division Consumer Price Index.

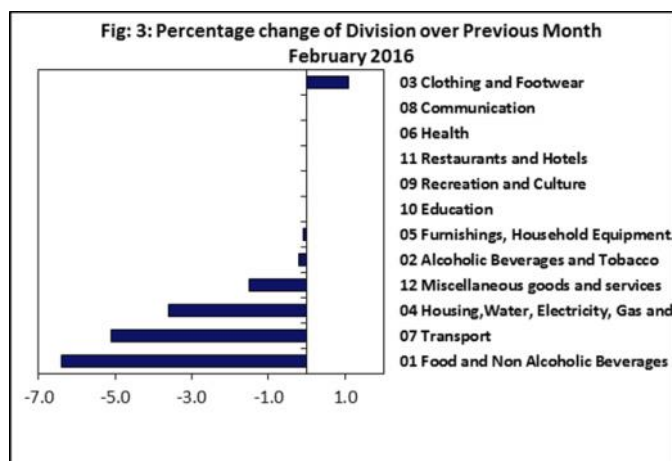


Source : Samoa Bureau of Statistics

Consumer Price Index (% Change)

Decreases recorded month on month for the Food and Non Alcoholic Beverages index with 6.4 percent, Transport index with 5.1 percent, Housing, Water, Electricity, Gas and other Fuels index with 3.6 percent, Miscellaneous Goods and Services index with 1.5 percent. The Alcoholic Beverages and Tobacco and Furnishing, Household Equipment and Maintenance indices both registered slight decreases of 0.2 and 0.1 percent, while Clothing and Footwear index recorded an increase of 1.1 percent.

No changes were recorded for the Health, Communication, Recreation and culture, Education and Restaurants indices. Graphically presented in Fig 3 is the February 2016 percentage change for all divisions from January 2016.



Source : Samoa Bureau of Statistics

Local Goods Component

The Local Goods Component of the Consumer Price Index registered a decrease of 6.0 percent when compared to the previous month. This decrease was mainly due to lower prices recorded for taro, taamu, yam, breadfruit, fresh fish (large), chinese cabbage, airline fare and electricity (kwh).

Imported Goods Component

Decreased prices recorded for rice and fuel (petrol and diesel) have resulted in the 1.1 percent decrease in the Imported Goods Component.

Food and Non Alcoholic Beverages Index

Lower prices recorded for rice, taro, taamu, yam, breadfruit, fresh fish (large), chinese cabbage is reflected in the 6.4 percent decrease in the Food and Non Alcoholic Beverages index.



Transport Index

A decrease of 5.1 percent in the Transport index was a reflection of the lower prices recorded for fuel (petrol and diesel) and airline fare (Apia-Auckland-Apia).

Housing, Water, Electricity, Gas and other Fuels Index

The 3.6 percent decrease in the Housing, Water, Electricity, Gas and other Fuels index was a result of the lower prices recorded for electricity (kwh).

Miscellaneous Goods and Services Index

Decreased prices recorded for toilet soap have resulted in the 1.5 percent decrease in the Miscellaneous Good and Services index.

Clothing and Footwear Index

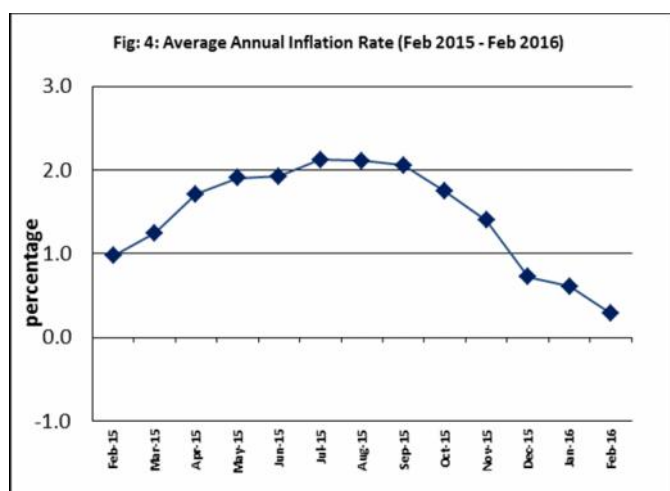
Higher prices recorded for ie solosolo and jandals resulted in the 1.1 percent increase in the Clothing and Footwear index.

Underlying Indices ^{1/}

The All Items Underlying Index for February 2016 registered a decrease of 0.5 percent when compared to January 2016, and a decrease of 4.9 percent when compared to February 2015. The Local Items Underlying Index registered a decrease of 0.8 percent, while Imported Items Underlying Index recorded a decrease of 0.5 percent.

Average Annual Inflation Rate

The average annual inflation rate for the year ended February 2016 was 0.3 percent. For the twelve months ending February 2015 the inflation rate was 1.0 percent. Presented in Fig 4 is the Average annual inflation rate (February 2015 - February 2016).



Source : Samoa Bureau of Statistics

The attached Tables and Graphs provide the user with more detailed analysis.

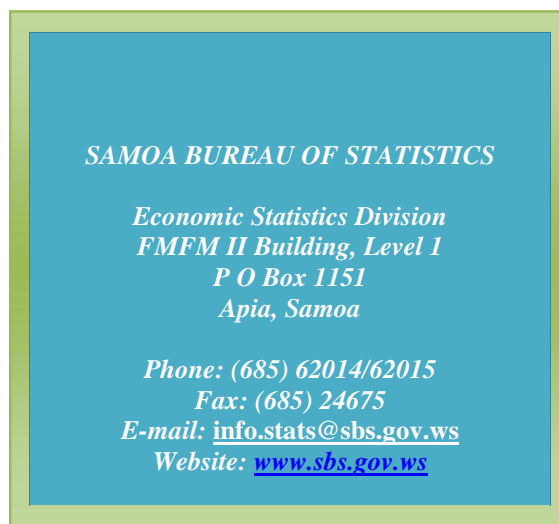
Technical Notes:

The Consumer Price (CPI) measures the rate of inflation for Samoa. It is designed to measure the change in prices for the goods purchased by households in Samoa. The CPI measures the change in prices by comparing the prices for a basket of goods and services at the collection period with the price for the same goods in a base period.

The basket of goods that is priced is based on the average expenditures of households as recorded in the Household Income and Expenditure Survey (HIES). The HIES survey identifies how much households spend on different items. The more households spend on an item on average, the more important it is to the price index, and the higher the weight in the index.

^{1/} Quarterly movements in the 'headline' CPI series can be volatile. This volatility reflects price changes in particular items that may be due, among other factors, to fluctuations in commodity markets and agricultural conditions, policy changes, or seasonal or infrequent price resetting.

Underlying inflation is measure of inflation that excludes certain items that face volatile price movements. Underlying inflation eliminates products that can have temporary price shocks because these shocks can diverge from the overall trend of inflation and give a false measure of inflation.



Date of release: 9th March 2016.

The next Consumer Price Index will be released on 11th April 2016.

Leota Aliielua Salani
ACTING GOVERNMENT STATISTICIAN

Table 1. CONSUMER PRICE INDEX.
(Base Period : Average Prices August 2010 = 100)

Group	All Items	Food and Non Alcoholic Beverages	Alcoholic Beverages and Tobacco	Clothing and Footwear	Housing,Water, Electricity, Gas and other Fuels	Furnishings, Household Equipment, and Maintenance	Health	Transport	Communication	Recreation and Culture	Education	Restaurants	Miscellaneous goods and services
Weights	1000	502	97	17	78	31	16	97	58	34	31	15	24
Ave - 2013	108.6	111.1	110.8	113.5	107.2	101.4	96.1	111.8	100.0	98.5	101.6	101.6	100.7
Ave - 2014	108.1	107.3	114.2	117.8	110.8	100.2	108.4	117.2	100.0	99.0	101.6	109.4	98.4
Ave - 2015	108.9	110.9	116.1	117.5	102.7	101.0	111.2	110.0	99.9	99.1	103.4	117.2	95.7
2015													
February	110.0	112.7	116.6	112.2	112.2	100.2	110.4	106.1	100.0	99.1	103.4	109.4	96.2
March	108.8	111.4	116.6	118.7	107.7	100.2	110.4	100.8	100.0	99.1	103.4	118.7	96.2
April	110.2	112.8	115.0	119.3	108.1	100.3	111.4	109.3	100.0	99.1	103.4	118.7	95.7
May	108.1	107.9	115.1	119.4	108.1	100.2	111.6	113.3	100.0	99.1	103.4	118.7	95.4
June	108.4	110.3	116.2	119.1	97.7	100.9	112.2	111.3	100.0	99.1	103.4	118.7	95.1
July	110.1	112.3	114.5	119.2	101.1	101.1	111.4	116.7	100.0	99.1	103.4	118.7	95.1
August	107.4	109.1	113.7	118.8	94.8	102.0	111.4	111.6	99.8	99.2	103.4	118.7	95.5
September	106.2	105.8	116.6	117.9	94.7	102.0	111.4	113.4	99.8	99.2	103.4	118.7	95.5
October	108.2	109.5	116.6	116.9	101.4	101.9	111.4	109.8	99.8	99.2	103.4	118.7	95.8
November	108.7	111.3	117.9	118.0	101.6	101.2	111.4	104.6	99.8	99.2	103.4	118.7	96.0
December	109.5	114.6	118.0	117.6	91.9	101.5	111.4	103.4	99.8	99.2	103.4	118.7	95.9
2016													
January	113.9	121.0	119.1	117.8	100.5	101.4	111.4	106.6	99.9	99.2	103.4	118.7	98.0
February (P)	109.1	113.2	118.9	119.1	96.9	101.3	111.4	101.2	99.9	99.2	103.4	118.7	96.5
Percentage Change (P)													
Feb 2016 over Jan 2016	-4.2	-6.4	-0.2	1.1	-3.6	-0.1	0.0	-5.1	0.0	0.0	0.0	0.0	-1.5
Feb 2016 over Feb 2015	-0.8	0.4	2.0	6.1	-13.6	1.1	0.9	-4.6	-0.1	0.1	0.0	8.5	0.3
ALL ITEMS UNDERLYING INDEX													
Group	All Items	Food and Non Alcoholic Beverages	Alcoholic Beverages and Tobacco	Clothing and Footwear	Housing,Water, Electricity, Gas and other Fuels	Furnishings, Household Equipment, and Maintenance	Health	Transport	Communication	Recreation and Culture	Education	Restaurants	Miscellaneous goods and services
Weights	480	348	n.a.	17	17	31	14	13	n.a.	2	n.a.	15	24
Ave - 2013	104.7	106.0		113.5	99.4	101.4	95.5	97.4		87.0		101.6	100.7
Ave - 2014	105.9	107.4		117.8	99.6	100.2	94.4	95.7		87.7		109.4	98.4
Ave - 2015	103.4	103.6		117.5	99.2	101.0	97.6	94.8		90.3		117.1	95.7
2015													
February	106.1	108.0		112.2	99.3	100.2	96.6	96.4		89.5		109.4	96.2
March	105.6	106.7		118.7	98.2	100.2	96.6	96.4		89.5		118.7	96.2
April	105.6	106.6		119.3	99.1	100.3	97.8	97.6		89.5		118.7	95.7
May	103.4	103.5		119.4	99.1	100.2	98.1	97.6		89.5		118.7	95.4
June	103.1	103.1		119.1	99.0	100.9	98.8	94.9		89.5		118.7	95.1
July	102.1	101.9		119.2	99.2	101.1	97.8	93.0		89.5		118.7	95.1
August	101.5	100.9		118.8	99.4	102.0	97.9	93.0		91.9		118.7	95.5
September	101.4	100.8		117.9	99.6	102.0	97.9	93.0		91.9		118.7	95.5
October	102.1	101.9		116.9	98.5	101.9	97.9	93.0		91.9		118.7	95.8
November	101.9	101.6		118.0	99.1	101.2	97.9	93.0		91.9		118.7	96.0
December	101.5	101.0		117.6	99.0	101.5	97.9	93.0		91.9		118.7	95.9
2016													
January	101.4	100.8		117.8	98.5	101.4	97.9	93.0		91.9		118.7	98.0
February (P)	100.9	100.1		119.1	97.5	101.3	97.9	93.0		91.9		118.7	96.5
Percentage Change (P)													
Feb 2016 over Jan 2016	-0.5	-0.7		1.1	-1.0	-0.1	0.0	0.0		0.0		0.0	-1.5
Feb 2016 over Feb 2015	-4.9	-7.3		6.1	-1.8	1.1	1.3	-3.5		2.6		8.6	0.3

Source : Samoa Bureau Statistics
(P): Provisional figures
Note: n.a. Not applicable

Commodities	Weight	Unit	2015				2016	
			Jan	Feb	Nov	Dec	Jan	Feb (P)
Magnesium Trisillicate	3.6	120mls	7.67	7.67	7.67	7.67	7.67	7.67
Cough Mixture	3.6	100mls	9.40	9.40	9.40	9.40	9.40	9.40
Hospital Charge	2.1	per night	10.00	10.00	10.00	10.00	10.00	10.00
Transport								
Petrol	39.1	ltr	2.78	2.42	2.48	2.33	2.31	2.18
Labour charge car repair	9.1	min crg	51.67	51.67	51.67	51.67	51.67	51.67
Air Fares Apia-Auckland-Apia	7.8	return	2449.35	1268.20	942.05	1271.75	1797.60	1285.41
Air Fares Fagalii-Pago	7.8	return	395.00	395.00	395.00	370.00	395.00	395.00
Bus Fares Apia-Motootua Hosp	3.7	per trip	1.30	1.30	1.30	1.30	1.30	1.30
Bus Fares Apia-Malua	3.7	per trip	2.60	2.60	2.60	2.60	2.60	2.60
Bus Fares Apia-Falefa	3.7	per trip	3.70	3.70	3.70	3.70	3.70	3.70
Car Tyre 205/70R(14)	3.7	size 14	220.00	220.00	197.50	197.50	197.50	197.50
Taxi Fares PO-Motootua Hosp	3.3	per trip	4.80	4.80	4.80	4.80	4.80	4.80
Taxi Fares Po-Malua	3.3	per trip	31.30	31.30	31.30	31.30	31.30	31.30
Taxi Fares PO-Falefa	3.3	per trip	43.20	43.20	43.20	43.20	43.20	43.20
Diesel	2.8	ltr	2.83	2.50	2.38	2.25	2.27	2.00
Car Registration 1500-2000 cc	2.0	ann rate	352.00	352.00	352.00	352.00	352.00	352.00
Boat Fares Mulifanua-Salelologa	1.3	one way	12.00	12.00	12.00	12.00	12.00	12.00
Communication								
Telephone local call	23.6	1 min	0.06	0.06	0.06	0.06	0.06	0.06
Telephone NZ call	10.6	3 mins	2.55	2.55	2.55	2.55	2.55	2.55
Telephone USA call	10.6	3 mins	5.35	5.35	5.35	5.35	5.37	5.37
Telephone Rental	10.6	monthly	24.15	24.15	24.15	24.15	24.15	24.15
Internet Prepaid Rates (a)	2.6	30 mins	5.10	5.10	4.90	4.90	4.90	4.90
PO Box rental (small box)	0.2	ann rate	80.00	80.00	80.00	80.00	80.00	80.00
Recreation and Culture								
National Lotto (a)	23.6	ticket	7.00	7.00	7.00	7.00	7.00	7.00
Tattslotto	3.8	ticket	13.50	13.50	13.50	13.50	13.50	13.50
News Paper Samoa Observer	2.7	each	2.50	2.50	2.50	2.50	2.50	2.50
Education								
School Fees Primary	10.5	Yr 4	10.00	10.00	10.00	10.00	10.00	10.00
School Fees Secondary	8.1	Yr 10	50.00	50.00	50.00	50.00	50.00	50.00
School Fees Primary	7.6	Yr 8	20.00	20.00	20.00	20.00	20.00	20.00
School Fees (NUS registration)	5.1	tertiary	292.00	292.00	292.00	292.00	292.00	292.00
Restaurants								
Meal (Fish & Chips)	11.0	1 serve	9.00	9.00	10.00	10.00	10.00	10.00
Meal (Pinati)	3.7	1 serve	3.00	3.00	3.00	3.00	3.00	3.00
Miscellaneous goods and services								
Toilet soap	7.6	90g	1.04	1.04	1.01	1.01	1.07	1.03
Diapers (16kg & over)	7.2	24pkt	37.80	37.90	38.02	38.02	38.02	38.02
Toilet Paper	3.6	roll	0.90	0.90	0.90	0.90	0.90	0.90

Source : Samoa Bureau Statistics

(a) : New commodity from August 2010

(b) : Average price across all brands

(P) : Provisional figures

Table 3. IMPORTED GOODS COMPONENT OF THE CONSUMER PRICE INDEX
(Base Period : Average Prices August 2010 = 100)

Group	All Items	Food and Non Alcoholic Beverages	Alcoholic Beverages and Tobacco	Clothing and Footwear	Housing,Water, Electricity, Gas and other Fuels	Furnishings, Household Equipment and Maintenance	Health	Transport	Communication	Recreation and Culture	Education	Restaurants	Miscellaneous goods and services
Weights	424.8	272.0	17.1	10.9	17.5	22.7	12.8	46.8	n.a.	1.3	n.a.	n.a.	23.7
Ave - 2013	106.9	106.2	112.1	110.9	101.7	103.0	95.2	119.7		77.0			100.7
Ave - 2014	108.2	108.2	113.4	110.0	101.7	102.3	94.0	120.8		78.2			98.4
Ave - 2015	102.1	103.1	105.4	108.4	97.7	103.2	96.4	99.5		82.9			95.7
2015													
February	105.8	108.9	112.2	108.8	98.3	102.2	96.4	97.4		81.5			96.2
March	103.6	107.2	112.2	108.9	95.9	102.2	96.4	88.1		81.5			96.2
April	104.5	107.0	112.2	109.8	97.7	102.1	97.7	96.5		81.5			95.7
May	102.2	102.8	112.2	109.9	97.7	102.0	98.0	100.6		81.5			95.4
June	101.6	102.3	109.7	109.1	97.5	103.0	97.0	98.8		81.5			95.1
July	100.8	100.7	99.9	109.2	98.2	103.2	95.9	104.1		81.5			95.1
August	100.2	99.5	96.2	108.6	98.5	104.5	95.9	106.8		85.7			95.5
September	99.7	99.3	96.2	107.2	98.1	104.4	95.9	102.9		85.7			95.5
October	100.0	100.9	96.2	105.6	96.0	104.4	95.9	98.0		85.7			95.8
November	100.0	100.3	102.3	107.3	96.9	104.0	95.9	98.1		85.7			96.0
December	99.1	99.9	103.0	106.7	96.2	104.2	95.9	92.9		85.7			95.9
2016													
January	98.7	99.2	103.7	107.0	95.8	104.2	95.9	92.2		85.7			98.0
February (P)	97.7	98.7	102.3	109.0	93.6	104.1	95.9	87.3		85.7			96.5
Percentage Change (P)													
Feb 2016 over Jan 2016	-1.1	-0.5	-1.3	1.8	-2.3	-0.1	0.0	-5.4		0.0			-1.5
Feb 2016 over Feb 2015	-7.7	-9.4	-8.8	0.2	-4.8	1.9	-0.5	-10.3		5.1			0.3
IMPORTED ITEMS UNDERLYING INDEX													
Group	All Items	Food and Non Alcoholic Beverages	Alcoholic Beverages and Tobacco	Clothing and Footwear	Housing,Water, Electricity, Gas and other Fuels	Furnishings, Household Equipment and Maintenance	Health	Transport	Communication	Recreation and Culture	Education	Restaurants	Miscellaneous goods and services
Weights	362.8	272.0	n.a.	10.9	15.4	22.7	12.8	4.0	n.a.	1.3	n.a.	n.a.	23.7
Ave - 2013	105.0	106.2		110.9	98.9	103.0	95.2	113.2		77.0			100.7
Ave - 2014	106.2	108.2		110.0	98.7	102.3	94.0	107.4		78.2			98.4
Ave - 2015	102.3	103.1		108.4	98.2	103.2	96.4	104.4		82.9			95.7
2015													
February	106.7	108.9		108.8	98.3	102.2	96.4	109.6		81.5			96.2
March	105.4	107.2		108.9	97.2	102.2	96.4	109.6		81.5			96.2
April	105.3	107.0		109.8	98.1	102.1	97.7	113.9		81.5			95.7
May	102.2	102.8		109.9	98.1	102.0	98.0	113.9		81.5			95.4
June	101.7	102.3		109.1	98.0	103.0	97.0	104.9		81.5			95.1
July	100.4	100.7		109.2	98.2	103.2	95.9	98.5		81.5			95.1
August	99.6	99.5		108.6	98.4	104.5	95.9	98.6		85.7			95.5
September	99.4	99.3		107.2	98.6	104.4	95.9	98.6		85.7			95.5
October	100.5	100.9		105.6	97.5	104.4	95.9	98.6		85.7			95.8
November	100.1	100.3		107.3	98.0	104.0	95.9	98.6		85.7			96.0
December	99.8	99.9		106.7	98.0	104.2	95.9	98.6		85.7			95.9
2016													
January	99.4	99.2		107.0	97.4	104.2	95.9	98.6		85.7			98.0
February (P)	99.0	98.7		109.0	96.3	104.1	95.9	98.6		85.7			96.5
Percentage Change (P)													
Feb 2016 over Jan 2016	-0.5	-0.5		1.8	-1.1	-0.1	0.0	0.0		0.0			-1.5
Feb 2016 over Feb 2015	-7.2	-9.4		0.2	-2.1	1.9	-0.5	-10.0		5.1			0.3

Source : Samoa Bureau Statistics

(P): Provisional figures

Note: n.a. Not applicable

Table 4. LOCAL GOODS COMPONENT OF THE CONSUMER PRICE INDEX
(Base Period : Average Prices August 2010 = 100)

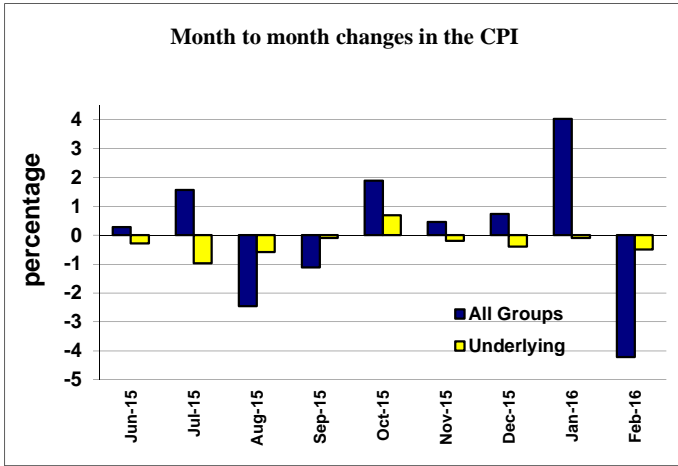
Group	All Items	Food and Non Alcoholic	Alcoholic Beverages	Clothing and	Housing,Water,	Furnishings, Household	Health	Transport	Communication	Recreation and Culture	Education	Restaurants	Miscellaneous
Weights	575.2	229.8	79.6	6.4	60.6	8.6	3.0	50.3	58.2	32.7	31.3	14.7	n.a.
Ave - 2013	109.8	116.9	110.5	117.9	108.8	97.1	100.0	104.4	100.0	99.4	101.6	101.6	
Ave - 2014	108.1	106.4	114.4	131.1	113.4	94.6	170.0	113.9	100.0	99.8	101.6	109.4	
Ave - 2015	114.0	120.0	118.4	133.0	104.1	95.1	174.4	119.8	99.9	99.8	103.4	117.1	
2015													
February	113.1	117.2	117.5	117.9	116.2	95.0	170.0	114.2	100.0	99.8	103.4	109.4	
March	112.6	116.4	117.5	135.5	111.1	95.0	170.0	112.5	100.0	99.8	103.4	118.7	
April	114.4	119.7	115.6	135.5	111.1	95.5	170.0	121.3	100.0	99.8	103.4	118.7	
May	112.5	114.0	115.7	135.5	111.1	95.5	170.0	125.1	100.0	99.8	103.4	118.7	
June	113.5	119.7	117.6	136.2	97.8	95.5	177.5	123.0	100.0	99.8	103.4	118.7	
July	116.9	125.9	117.6	136.2	101.9	95.5	177.5	128.4	100.0	99.8	103.4	118.7	
August	112.7	120.4	117.4	136.2	93.7	95.5	177.5	116.0	99.8	99.8	103.4	118.7	
September	111.0	113.5	121.0	136.2	93.7	95.5	177.5	123.1	99.8	99.8	103.4	118.7	
October	114.3	119.8	121.0	136.2	102.9	95.5	177.5	120.6	99.8	99.8	103.4	118.7	
November	115.2	124.3	121.2	136.2	102.9	93.9	177.5	110.7	99.8	99.8	103.4	118.7	
December	117.2	131.9	121.2	136.2	90.7	94.2	177.5	113.3	99.8	99.8	103.4	118.7	
2016													
January	125.1	146.8	122.4	136.2	101.9	93.9	177.5	119.9	99.9	99.8	103.4	118.7	
February (P)	117.6	130.4	122.4	136.2	97.8	93.9	177.5	114.2	99.9	99.8	103.4	118.7	
Percentage Change (P)													
Feb 2016													
over	-6.0	-11.2	0.0	0.0	-4.0	0.0	0.0	-4.7	0.0	0.0	0.0	0.0	
Jan 2016													
Feb 2016													
over	4.0	11.3	4.2	15.5	-15.8	-1.1	4.4	0.0	-0.1	0.0	0.0	8.6	
Feb 2015													
LOCAL ITEMS UNDERLYING INDEX													
Group	All Items	Food and Non Alcoholic	Alcoholic Beverages	Clothing and	Housing,Water,	Furnishings, Household	Health	Transport	Communication	Recreation and Culture	Education	Restaurants	Miscellaneous
Weights	117.4	75.5	n.a.	6.4	1.2	8.6	0.9	9.1	n.a.	1.0	n.a.	14.7	n.a.
Ave - 2013	103.8	105.5		117.9	105.9	97.1	100.0	90.5		100.0		101.6	
Ave - 2014	105.0	104.8		131.1	111.5	94.6	100.0	90.5		100.0		109.4	
Ave - 2015	106.6	105.5		133.0	112.0	95.1	114.6	90.5		100.0		117.1	
2015													
February	104.2	104.8		117.9	111.5	95.0	100.0	90.5		100.0		109.4	
March	106.5	104.9		135.5	111.5	95.0	100.0	90.5		100.0		118.7	
April	106.8	105.3		135.5	111.5	95.5	100.0	90.5		100.0		118.7	
May	107.3	106.1		135.5	111.5	95.5	100.0	90.5		100.0		118.7	
June	107.4	105.9		136.2	112.3	95.5	125.0	90.5		100.0		118.7	
July	107.4	106.0		136.2	112.3	95.5	125.0	90.5		100.0		118.7	
August	107.4	106.0		136.2	112.3	95.5	125.0	90.5		100.0		118.7	
September	107.5	106.2		136.2	112.3	95.5	125.0	90.5		100.0		118.7	
October	107.1	105.5		136.2	112.0	95.5	125.0	90.5		100.0		118.7	
November	107.5	106.3		136.2	113.4	93.9	125.0	90.5		100.0		118.7	
December	106.9	105.3		136.2	111.6	94.2	125.0	90.5		100.0		118.7	
2016													
January	107.7	106.5		136.2	113.4	93.9	125.0	90.5		100.0		118.7	
February (P)	106.8	105.2		136.2	113.4	93.9	125.0	90.5		100.0		118.7	
Percentage Change (P)													
Feb 2016													
over	-0.8	-1.2		0.0	0.0	0.0	0.0	0.0		0.0		0.0	
Jan 2016													
Feb 2016													
over	2.5	0.4		15.5	1.7	-1.2	25.0	0.0		0.0		8.5	
Feb 2015													

Source : Samoa Bureau Statistics

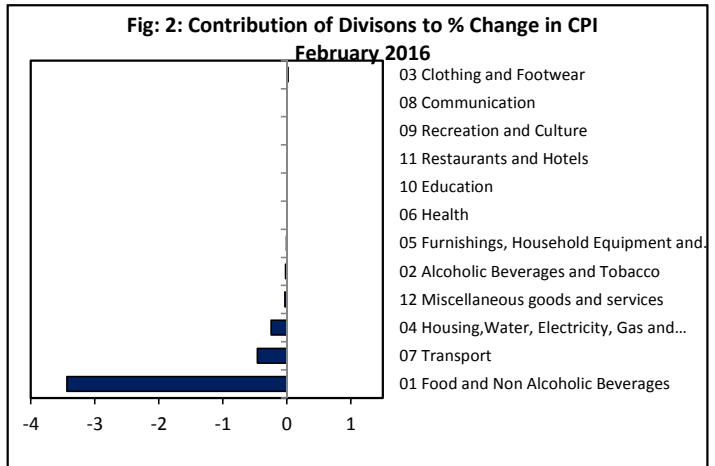
(P): Provisional figures

Note: n.a. Not applicable

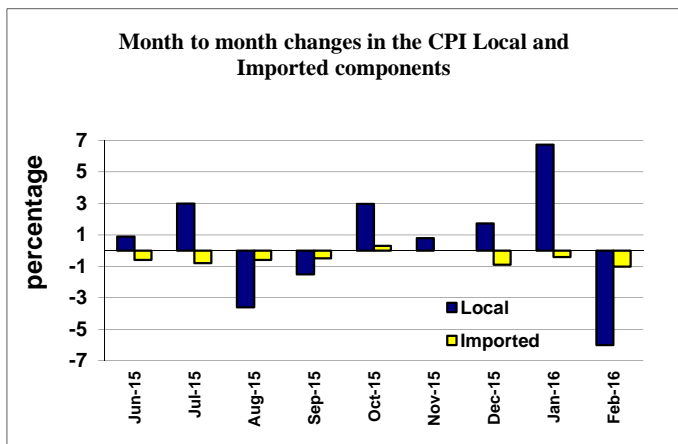
Graph.1



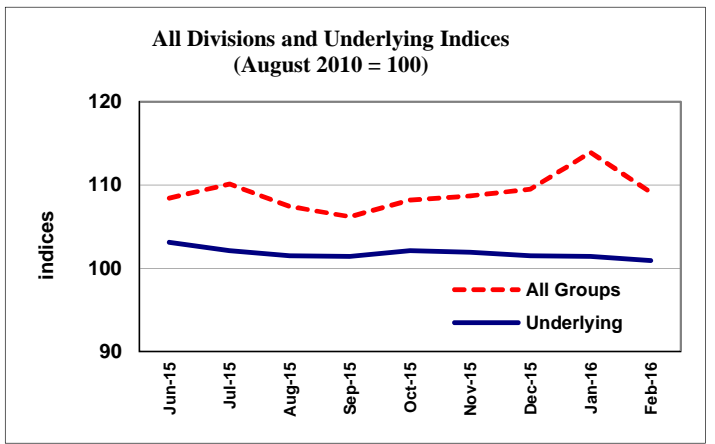
Graph.2



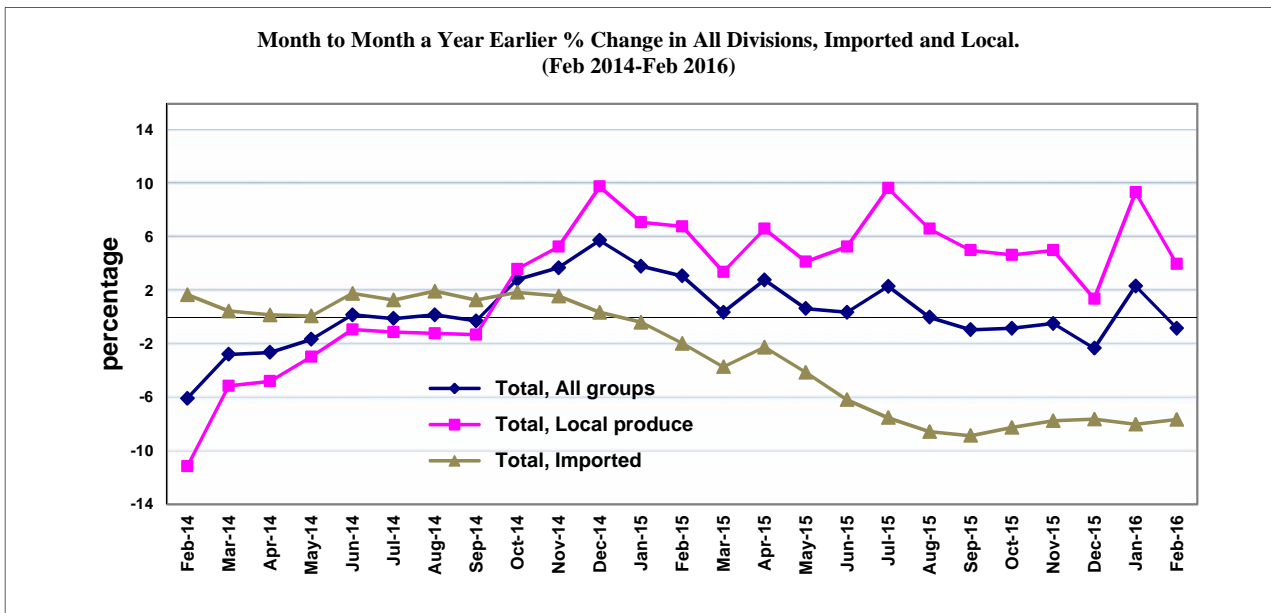
Graph.3



Graph.4



Graph 5



Source: Samoa Bureau of Statistics