

Please address all correspondence  
To Government Statistician  
In reply, please quote the file reference



File Ref: CPI 1/16

GOVERNMENT OF SAMOA

## SAMOA BUREAU OF STATISTICS

# CONSUMER PRICE INDEX January 2016

### Key findings:

With the beginning of a new calendar year, the Consumer Price Index for January 2016 increased by 4.0 percent compared to the previous month.

- Housing, Water, Electricity, Gas and other Fuels increased by 9.4 percent
- The Food and Non Alcoholic Beverages index also increased by 5.6 percent.
- The Average Annual Inflation for the year ended January 2015 was 0.6 percent.

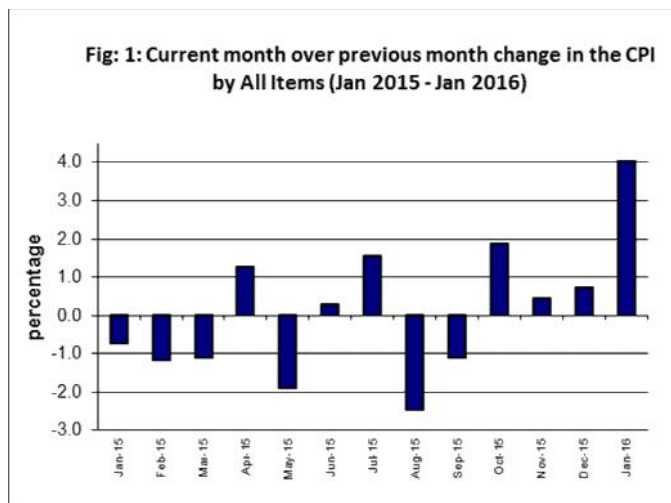
In the year to January 2016, the CPI rose 2.3 percent.

### SUMMARY

The Consumer Price Index for January 2016 was 4.0 percent higher than December 2015, and was 2.3 percent higher than January 2015.

The increase of the Local Goods component by 6.7 percent from the previous month was due to higher prices for market staples and electricity (kwh), which was also the main contributor to the increase of 4.0 percent in the All Items Consumer Price Index.

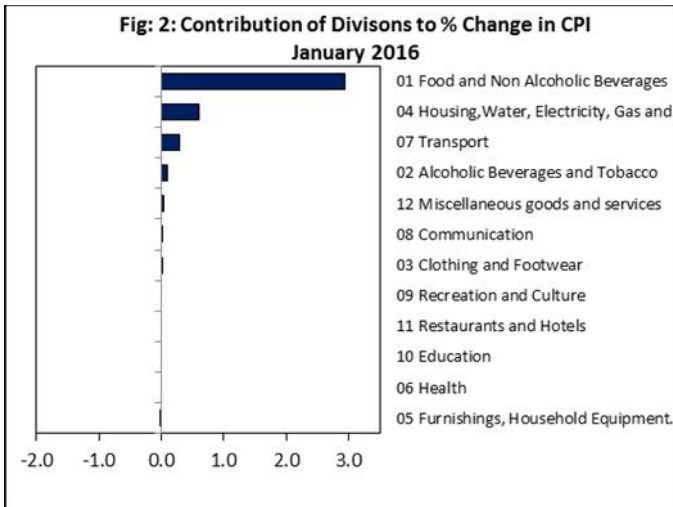
The Imported Goods Component recorded a decrease of 0.4 percent over December 2015. Figure 1 shows the month to month percentage changes in the Consumer Price Index by all Divisions from January 2015 to January 2016.



Source : Samoa Bureau of Statistics

## Total All Divisions Contribution

Food and Non Alcoholic Beverages divisions along with Housing, Water, Electricity, Gas and other Fuels were the main contributors to the overall increase of 4.0 percent in the All Division Consumer Price Index.

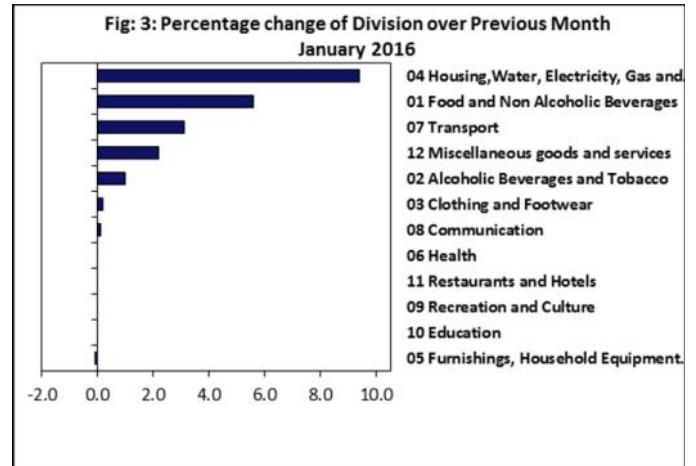


Source : Samoa Bureau of Statistics

## Consumer Price Index (% Change)

The increase recorded month on month for the Food and Non Alcoholic Beverages index with 5.6 percent, Housing, Water, Electricity, Gas and other Fuels index with 9.4 percent, Transport index with 3.1 percent, Miscellaneous Goods and Services with 2.2 percent and Alcoholic Beverages and Tobacco index with 0.9 percent. The Clothing and Footwear and Communication indices both registered slight increases of 0.2 and 0.1 percent, while Furnishing, Household Equipment and Maintenance index recorded a decrease of 0.1 percent.

No changes were recorded for the Health, Recreation and culture, Education and Restaurants indices. Graphically presented in Fig 3 is the January 2016 percentage change for all divisions from December 2015.



Source : Samoa Bureau of Statistics

## Local Goods Component

The Local Goods Component of the Consumer Price Index registered an increase of 6.7 percent when compared to the previous month. This increase was mainly due to higher prices recorded for taro, taamu, fresh fish (piece and large), banana, tomato, beer, electricity (kwh) and airline fare Apia-Auckland-Apia.

## Imported Goods Component

Decreased prices recorded for chicken leg quarter, rice and milk (Devondale and Anchor) have resulted in the 0.4 percent decrease in the Imported Good Component.

## Housing, Water, Electricity, Gas and other Fuels Index

The 9.4 percent increase in the Housing, Water, Electricity, Gas and other Fuels index was a result of the higher prices recorded for electricity (kwh).

## Food and Non Alcoholic Beverages Index

Higher prices recorded for taro, taamu, fresh fish (piece and large), banana, tomato is reflected in the 5.6 percent increase in the Food and Non Alcoholic Beverages index.



## Transport Index

An increase of 3.1 percent in the Transport index was a reflection of the higher prices recorded for airline fare (Apia-Auckland-Apia and Fagalii-Pago-Fagalii).

## Miscellaneous Goods and Services Index

Higher prices recorded for toilet soap and tooth paste is reflected in the 2.2 percent increase in the Miscellaneous Good and Services index.

## Alcoholic Beverages and Tobacco Index

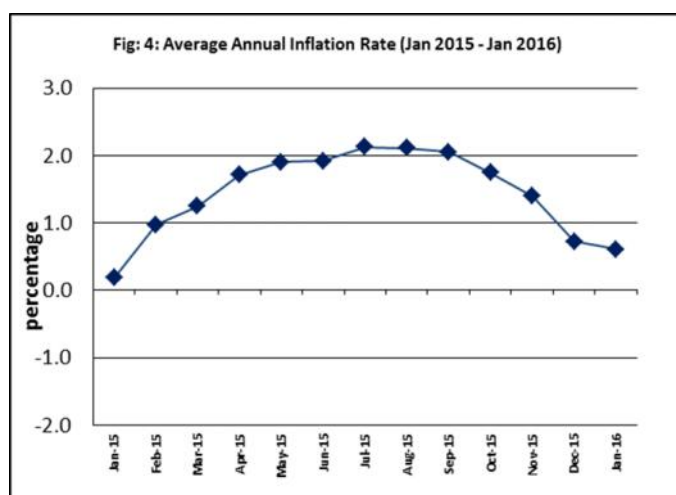
The 0.9 percent increase in the Alcoholic Beverages and Tobacco Index was a result of the higher prices recorded for beer.

## Underlying Indices <sup>1/</sup>

The All Items Underlying Index for January 2016 registered a decrease of 0.1 percent when compared to December 2015, and also a decrease of 4.2 percent when compared to January 2015. The Imported Items Underlying Index registered a decrease of 0.4 percent, while the Local Items Underlying Index recorded an increase of 0.7 percent.

## Inflation Rate

The average annual inflation rate for the year ended January 2016 was 0.6 percent. For the twelve months ending January 2015 the inflation rate was 0.2 percent. Presented in Fig 4 is the Average annual inflation rate (January 2015 - January 2016).



Source : Samoa Bureau of Statistics

The attached Tables and Graphs provide the user with more detailed analysis.

## Technical Notes:

The Consumer Price (CPI) measures the rate of inflation for Samoa. It is designed to measure the change in prices for the goods purchased by households in Samoa. The CPI measures the change in prices by comparing the prices for a basket of goods and services at the collection period with the price for the same goods in a base period.

The basket of goods that is priced is based on the average expenditures of households as recorded in the Household Income and Expenditure Survey (HIES). The HIES survey identifies how much households spend on different items. The more households spend on an item on average, the more important it is to the price index, and the higher the weight in the index.

<sup>1/</sup> Quarterly movements in the 'headline' CPI series can be volatile. This volatility reflects price changes in particular items that may be due, among other factors, to fluctuations in commodity markets and agricultural conditions, policy changes, or seasonal or infrequent price resetting.

Underlying inflation is a measure of inflation that excludes certain items that face volatile price movements. Underlying inflation eliminates products that can have temporary price shocks because these shocks can diverge from the overall trend of inflation and give a false measure of inflation.


**SAMOA BUREAU OF STATISTICS**

Economic Statistics Division  
FMFM II Building, Level 1  
P O Box 1151  
Apia, Samoa

Phone: (685) 62014/62015  
Fax: (685) 24675  
E-mail: [info.stats@sbs.gov.ws](mailto:info.stats@sbs.gov.ws)  
Website: [www.sbs.gov.ws](http://www.sbs.gov.ws)

Date of release: 9<sup>th</sup> February 2016.

The next Consumer Price Index will be released on 9<sup>th</sup> March 2016.

  
Muagututi'a S Reupena.  
**GOVERNMENT STATISTICIAN**

**Table 1. CONSUMER PRICE INDEX.**  
(Base Period : Average Prices August 2010 = 100)

Group	All Items	Food and Non Alcoholic Beverages	Alcoholic Beverages and Tobacco	Clothing and Footwear	Housing, Water, Electricity, Gas and other Fuels	Furnishings, Household Equipment, and Maintenance	Health	Transport	Communication	Recreation and Culture	Education	Restaurants	Miscellaneous goods and services
<i>Weights</i>	<b>1000</b>	<b>502</b>	<b>97</b>	<b>17</b>	<b>78</b>	<b>31</b>	<b>16</b>	<b>97</b>	<b>58</b>	<b>34</b>	<b>31</b>	<b>15</b>	<b>24</b>
<i>Ave - 2013</i>	108.6	111.1	110.8	113.5	107.2	101.4	96.1	111.8	100.0	98.5	101.6	101.6	100.7
<i>Ave - 2014</i>	108.1	107.3	114.2	117.8	110.8	100.2	108.4	117.2	100.0	99.0	101.6	109.4	98.4
<i>Ave - 2015</i>	108.9	110.9	116.1	117.5	102.7	101.0	111.2	110.0	99.9	99.1	103.4	117.2	95.7
<b>2015</b>													
January	111.3	112.5	116.6	112.6	113.0	100.6	110.4	119.9	100.0	98.9	103.4	109.4	96.1
February	110.0	112.7	116.6	112.2	112.2	100.2	110.4	106.1	100.0	99.1	103.4	109.4	96.2
March	108.8	111.4	116.6	118.7	107.7	100.2	110.4	100.8	100.0	99.1	103.4	118.7	96.2
April	110.2	112.8	115.0	119.3	108.1	100.3	111.4	109.3	100.0	99.1	103.4	118.7	95.7
May	108.1	107.9	115.1	119.4	108.1	100.2	111.6	113.3	100.0	99.1	103.4	118.7	95.4
June	108.4	110.3	116.2	119.1	97.7	100.9	112.2	111.3	100.0	99.1	103.4	118.7	95.1
July	110.1	112.3	114.5	119.2	101.1	101.1	111.4	116.7	100.0	99.1	103.4	118.7	95.1
August	107.4	109.1	113.7	118.8	94.8	102.0	111.4	111.6	99.8	99.2	103.4	118.7	95.5
September	106.2	105.8	116.6	117.9	94.7	102.0	111.4	113.4	99.8	99.2	103.4	118.7	95.5
October	108.2	109.5	116.6	116.9	101.4	101.9	111.4	109.8	99.8	99.2	103.4	118.7	95.8
November	108.7	111.3	117.9	118.0	101.6	101.2	111.4	104.6	99.8	99.2	103.4	118.7	96.0
December	109.5	114.6	118.0	117.6	91.9	101.5	111.4	103.4	99.8	99.2	103.4	118.7	95.9
<b>2016</b>													
January (P)	113.9	121.0	119.1	117.8	100.5	101.4	111.4	106.6	99.9	99.2	103.4	118.7	98.0
<b><u>Percentage Change (P)</u></b>													
Jan 2016 over Dec 2015	4.0	5.6	0.9	0.2	9.4	-0.1	0.0	3.1	0.1	0.0	0.0	0.0	2.2
Jan 2016 over Jan 2015	2.3	7.6	2.1	4.6	-11.1	0.8	0.9	-11.1	-0.1	0.3	0.0	8.5	2.0
<b>ALL ITEMS UNDERLYING INDEX</b>													
Group	All Items	Food and Non Alcoholic Beverages	Alcoholic Beverages and Tobacco	Clothing and Footwear	Housing, Water, Electricity, Gas and other Fuels	Furnishings, Household Equipment, and Maintenance	Health	Transport	Communication	Recreation and Culture	Education	Restaurants	Miscellaneous goods and services
<i>Weights</i>	<b>480</b>	<b>348</b>	<i>n.a.</i>	<b>17</b>	<b>17</b>	<b>31</b>	<b>14</b>	<b>13</b>	<i>n.a.</i>	<b>2</b>	<i>n.a.</i>	<b>15</b>	<b>24</b>
<i>Ave - 2013</i>	104.7	106.0		113.5	99.4	101.4	95.5	97.4		87.0		101.6	100.7
<i>Ave - 2014</i>	105.9	107.4		117.8	99.6	100.2	94.4	95.7		87.7		109.4	98.4
<i>Ave - 2015</i>	103.4	103.6		117.5	99.2	101.0	97.6	94.8		90.3		117.1	95.7
<b>2015</b>													
January	105.9	107.7		112.6	101.1	100.6	96.6	96.4		87.6		109.4	96.1
February	106.1	108.0		112.2	99.3	100.2	96.6	96.4		89.5		109.4	96.2
March	105.6	106.7		118.7	98.2	100.2	96.6	96.4		89.5		118.7	96.2
April	105.6	106.6		119.3	99.1	100.3	97.8	97.6		89.5		118.7	95.7
May	103.4	103.5		119.4	99.1	100.2	98.1	97.6		89.5		118.7	95.4
June	103.1	103.1		119.1	99.0	100.9	98.8	94.9		89.5		118.7	95.1
July	102.1	101.9		119.2	99.2	101.1	97.8	93.0		89.5		118.7	95.1
August	101.5	100.9		118.8	99.4	102.0	97.9	93.0		91.9		118.7	95.5
September	101.4	100.8		117.9	99.6	102.0	97.9	93.0		91.9		118.7	95.5
October	102.1	101.9		116.9	98.5	101.9	97.9	93.0		91.9		118.7	95.8
November	101.9	101.6		118.0	99.1	101.2	97.9	93.0		91.9		118.7	96.0
December	101.5	101.0		117.6	99.0	101.5	97.9	93.0		91.9		118.7	95.9
<b>2016</b>													
January (P)	101.4	100.8		117.8	98.5	101.4	97.9	93.0		91.9		118.7	98.0
<b><u>Percentage Change (P)</u></b>													
Jan 2016 over Dec 2015	-0.1	-0.2		0.2	-0.5	-0.1	0.0	0.0		0.0		0.0	2.2
Jan 2016 over Jan 2015	-4.2	-6.4		4.6	-2.6	0.8	1.3	-3.5		4.9		8.6	1.9

Source : Samoa Bureau Statistics

(P): Provisional figures

Note: n.a. Not applicable

**Table 2. AVERAGE RETAIL PRICES OF SELECTED COMMODITIES**

Commodities	Weight	Unit	2014		2015		2016	
			Dec	Jan	Oct	Nov	Dec	Jan (P)
<b>Food and Non Alcoholic Beverages</b>								
Chicken Leg Quarters	41.8	lb	1.26	1.21	1.41	1.39	1.26	1.21
Taro	41.2	lb	1.13	1.25	0.91	1.02	1.13	1.25
Rice short grain	26.5	lb	1.55	1.49	1.60	1.54	1.55	1.49
Mutton (Pure Flap)	25.5	lb	7.45	7.44	7.87	7.63	7.45	7.44
Canned fish Natural Oil (b)	25.1	15oz	3.43	3.43	3.35	3.39	3.43	3.43
Bread	22.3	loaf	1.73	1.73	1.77	1.77	1.73	1.73
Canned fish Tomato Sauce (b)	22.1	15oz	2.92	2.90	2.88	2.92	2.92	2.90
Taamu	18.9	lb	2.82	4.07	1.99	2.16	2.82	4.07
Sugar Brown	18.7	lb	1.20	1.27	1.11	1.06	1.20	1.27
Fish (piece)	14.5	lb	6.60	8.01	6.24	6.99	6.60	8.01
Canned Beef (b)	13.7	12oz	12.62	12.62	12.59	12.62	12.62	12.62
Mineral Water	12.4	500mls	2.00	2.07	2.00	2.00	2.00	2.07
Chicken Wings (a)	12.0	lb	3.69	3.74	3.79	3.79	3.69	3.74
Fish (string)	11.7	lb	5.12	4.91	4.58	4.38	5.12	4.91
Koko Samoa	11.5	sml cup	4.57	4.57	4.71	4.57	4.57	4.57
Biscuits Sky Flakes (a)	11.0	850g	15.55	15.70	15.05	15.05	15.55	15.70
Bananas	10.5	lb	0.45	0.56	0.46	0.47	0.45	0.56
Fish (large)	10.2	lb	8.54	8.65	7.95	8.05	8.54	8.65
Milk unskimmed UHT (b)	9.9	ltr	3.94	3.36	4.19	4.16	3.94	3.36
Butter Anchor	9.4	lb	11.72	11.72	11.13	11.72	11.72	11.72
Soft Drink Coke	9.2	750mls	3.51	3.66	3.56	3.56	3.51	3.66
Ramen Maggie	8.8	85g	1.10	1.08	1.10	1.10	1.10	1.08
Flour	6.8	lb	1.09	1.07	1.02	1.08	1.09	1.07
Yam	6.3	lb	1.90	2.00	1.67	1.77	1.90	2.00
Oil Cooking oil (a)	5.8	500mls	5.78	5.78	5.55	5.55	5.78	5.78
Taro Leaves	5.5	lb	3.41	3.09	3.16	3.61	3.41	3.09
Coconuts	5.1	lb	0.27	0.27	0.27	0.26	0.27	0.27
Chinese Cabbage	5.0	lb	3.06	2.99	1.92	2.05	3.06	2.99
Salted Beef	4.9	lb	6.99	7.14	6.65	7.10	6.99	7.14
Eggs	4.3	doz	5.94	5.94	5.94	5.94	5.94	5.94
Stewing beef	4.3	lb	6.19	6.25	6.08	6.22	6.19	6.25
Breadfruit	4.2	lb	0.47	0.40	0.68	0.64	0.47	0.40
<b>Alcoholic Beverages and Tobacco</b>								
Cigarettes (b)	41.70	20rolls	10.29	10.29	10.29	10.29	10.29	10.29
Beer Vailima	32.3	355mls	4.60	4.69	4.59	4.60	4.60	4.69
Spirit Volka nip	6.3	nip	7.33	7.33	7.33	7.33	7.33	7.33
Spirit whisky nip	6.3	nip	10.00	10.00	8.33	10.00	10.00	10.00
<b>Clothing and Footwear</b>								
School Uniform	5.4	each	34.00	34.00	34.00	34.00	34.00	34.00
Ie Solosolo	2.1	2yds	7.22	7.22	7.28	7.22	7.22	7.22
Jandals soft rubber	2.1	10.5	8.55	8.60	8.35	8.63	8.55	8.60
Jandals hard rubber	1.6	8	3.00	3.00	3.00	3.00	3.00	3.00
<b>Housing, Water, Electricity, Gas and other Fuels</b>								
Electricity	56.9	kwh	0.80	0.91	0.92	0.92	0.80	0.91
Roofing iron	5.2	12ft	54.80	54.80	54.80	54.80	54.80	54.80
Cement	4.4	40kg	23.35	23.35	23.55	23.35	23.35	23.35
Natural gas	3.5	20lb	68.40	67.00	66.65	68.40	68.40	67.00
Kerosene	2.1	ltr	1.95	1.97	1.99	2.08	1.95	1.97
<b>Furnishings, Household Equipment and Routine Household Maintenance</b>								
Washing powder (b)	6.00	200g	1.57	1.52	1.50	1.57	1.57	1.52
Washing soap	4.3	bar	2.88	2.87	2.97	2.87	2.88	2.87
Refridgerator	3.7	331ltrs	2900.00	2900.00	2900.00	2900.00	2900.00	2900.00
Sheeting material	3.3	yd	13.95	13.95	13.95	13.95	13.95	13.95
Sefe 3 sheves (a)	2.7	48*48	515.00	515.00	515.00	515.00	515.00	515.00
Kerosene stove 2 burners	2.0	each	144.33	144.33	141.67	144.33	144.33	144.33
Mosquito coil	2.0	box	1.34	1.40	1.28	1.28	1.34	1.40

Commodities	Weight	Unit	2014		2015		2016	
			Dec	Jan	Oct	Nov	Dec	Jan (P)
Magnesium Trisillicate	3.6	120mls	7.67	7.67	7.67	7.67	7.67	7.67
Cough Mixture	3.6	100mls	9.40	9.40	9.40	9.40	9.40	9.40
Hospital Charge	2.1	per night	10.00	10.00	10.00	10.00	10.00	10.00
<b>Transport</b>								
Petrol	39.1	ltr	2.33	2.31	2.48	2.48	2.33	2.31
Labour charge car repair	9.1	min crg	51.67	51.67	51.67	51.67	51.67	51.67
Air Fares Apia-Auckland-Apia	7.8	return	1271.75	1797.60	1768.31	942.05	1271.75	1797.60
Air Fares Fagalii-Pago	7.8	return	370.00	395.00	395.00	395.00	370.00	395.00
Bus Fares Apia-Motootua Hosp	3.7	per trip	1.30	1.30	1.30	1.30	1.30	1.30
Bus Fares Apia-Malua	3.7	per trip	2.60	2.60	2.60	2.60	2.60	2.60
Bus Fares Apia-Falefa	3.7	per trip	3.70	3.70	3.70	3.70	3.70	3.70
Car Tyre 205/70R(14)	3.7	size 14	197.50	197.50	197.50	197.50	197.50	197.50
Taxi Fares PO-Motootua Hosp	3.3	per trip	4.80	4.80	4.80	4.80	4.80	4.80
Taxi Fares Po-Malua	3.3	per trip	31.30	31.30	31.30	31.30	31.30	31.30
Taxi Fares PO-Falefa	3.3	per trip	43.20	43.20	43.20	43.20	43.20	43.20
Diesel	2.8	ltr	2.25	2.27	2.34	2.38	2.25	2.27
Car Registration 1500-2000 cc	2.0	ann rate	352.00	352.00	352.00	352.00	352.00	352.00
Boat Fares Mulifanua-Salelologa	1.3	one way	12.00	12.00	12.00	12.00	12.00	12.00
<b>Communication</b>								
Telephone local call	23.6	1 min	0.06	0.06	0.06	0.06	0.06	0.06
Telephone NZ call	10.6	3 mins	2.55	2.55	2.55	2.55	2.55	2.55
Telephone USA call	10.6	3 mins	5.35	5.37	5.35	5.35	5.35	5.37
Telephone Rental	10.6	monthly	24.15	24.15	24.15	24.15	24.15	24.15
Internet Prepaid Rates (a)	2.6	30 mins	4.90	4.90	4.90	4.90	4.90	4.90
PO Box rental (small box)	0.2	ann rate	80.00	80.00	80.00	80.00	80.00	80.00
<b>Recreation and Culture</b>								
National Lotto (a)	23.6	ticket	7.00	7.00	7.00	7.00	7.00	7.00
Tattslotto	3.8	ticket	13.50	13.50	13.50	13.50	13.50	13.50
News Paper Samoa Observer	2.7	each	2.50	2.50	2.50	2.50	2.50	2.50
<b>Education</b>								
School Fees Primary	10.5	Yr 4	10.00	10.00	10.00	10.00	10.00	10.00
School Fees Secondary	8.1	Yr 10	50.00	50.00	50.00	50.00	50.00	50.00
School Fees Primary	7.6	Yr 8	20.00	20.00	20.00	20.00	20.00	20.00
School Fees (NUS registration)	5.1	tertiary	292.00	292.00	292.00	292.00	292.00	292.00
<b>Restaurants</b>								
Meal (Fish & Chips)	11.0	1 serve	10.00	10.00	10.00	10.00	10.00	10.00
Meal (Pinati)	3.7	1 serve	3.00	3.00	3.00	3.00	3.00	3.00
<b>Miscellaneous goods and services</b>								
Toilet soap	7.6	90g	1.01	1.07	1.01	1.01	1.01	1.07
Diapers (16kg & over )	7.2	24pkt	38.02	38.02	38.02	38.02	38.02	38.02
Toilet Paper	3.6	roll	0.90	0.90	0.90	0.90	0.90	0.90

Source : Samoa Bureau Statistics

(a) : New commodity from August 2010

(b) : Average price across all brands

(P) : Provisional figures

**Table 3. IMPORTED GOODS COMPONENT OF THE CONSUMER PRICE INDEX**  
(Base Period : Average Prices August 2010 = 100)

Group	All Items	Food and Non Alcoholic Beverages	Alcoholic Beverages and Tobacco	Clothing and Footwear	Housing, Water, Electricity, Gas and other Fuels	Furnishings, Household Equipment and Maintenance	Health	Transport	Communication	Recreation and Culture	Education	Restaurants	Miscellaneous goods and services
<b>Weights</b>	<b>424.8</b>	<b>272.0</b>	<b>17.1</b>	<b>10.9</b>	<b>17.5</b>	<b>22.7</b>	<b>12.8</b>	<b>46.8</b>	<b>n.a.</b>	<b>1.3</b>	<b>n.a.</b>	<b>n.a.</b>	<b>23.7</b>
Ave - 2013	106.9	106.2	112.1	110.9	101.7	103.0	95.2	119.7		77.0			100.7
Ave - 2014	108.2	108.2	113.4	110.0	101.7	102.3	94.0	120.8		78.2			98.4
Ave - 2015	102.1	103.1	105.4	108.4	97.7	103.2	96.4	99.5		82.9			95.7
2015													
January	107.3	108.8	112.2	109.5	101.9	102.7	96.4	110.1		78.1			96.1
February	105.8	108.9	112.2	108.8	98.3	102.2	96.4	97.4		81.5			96.2
March	103.6	107.2	112.2	108.9	95.9	102.2	96.4	88.1		81.5			96.2
April	104.5	107.0	112.2	109.8	97.7	102.1	97.7	96.5		81.5			95.7
May	102.2	102.8	112.2	109.9	97.7	102.0	98.0	100.6		81.5			95.4
June	101.6	102.3	109.7	109.1	97.5	103.0	97.0	98.8		81.5			95.1
July	100.8	100.7	99.9	109.2	98.2	103.2	95.9	104.1		81.5			95.1
August	100.2	99.5	96.2	108.6	98.5	104.5	95.9	106.8		85.7			95.5
September	99.7	99.3	96.2	107.2	98.1	104.4	95.9	102.9		85.7			95.5
October	100.0	100.9	96.2	105.6	96.0	104.4	95.9	98.0		85.7			95.8
November	100.0	100.3	102.3	107.3	96.9	104.0	95.9	98.1		85.7			96.0
December	99.1	99.9	103.0	106.7	96.2	104.2	95.9	92.9		85.7			95.9
2016													
January (P)	98.7	99.2	103.7	107.0	95.8	104.2	95.9	92.2		85.7			98.0
<b>Percentage Change (P)</b>													
Jan 2016 over Dec 2015	-0.4	-0.7	0.7	0.3	-0.5	0.0	0.0	-0.7		0.0			2.2
Jan 2016 over Jan 2015	-8.0	-8.8	-7.5	-2.3	-6.0	1.5	-0.5	-16.2		9.7			1.9

**IMPORTED ITEMS UNDERLYING INDEX**

Group	All Items	Food and Non Alcoholic Beverages	Alcoholic Beverages and Tobacco	Clothing and Footwear	Housing, Water, Electricity, Gas and other Fuels	Furnishings, Household Equipment and Maintenance	Health	Transport	Communication	Recreation and Culture	Education	Restaurants	Miscellaneous goods and services
<b>Weights</b>	<b>362.8</b>	<b>272.0</b>	<b>n.a.</b>	<b>10.9</b>	<b>15.4</b>	<b>22.7</b>	<b>12.8</b>	<b>4.0</b>	<b>n.a.</b>	<b>1.3</b>	<b>n.a.</b>	<b>n.a.</b>	<b>23.7</b>
Ave - 2013	105.0	106.2		110.9	98.9	103.0	95.2	113.2		77.0			100.7
Ave - 2014	106.2	108.2		110.0	98.7	102.3	94.0	107.4		78.2			98.4
Ave - 2015	102.3	103.1		108.4	98.2	103.2	96.4	104.4		82.9			95.7
2015													
January	106.7	108.8		109.5	100.3	102.7	96.4	109.6		78.1			96.1
February	106.7	108.9		108.8	98.3	102.2	96.4	109.6		81.5			96.2
March	105.4	107.2		108.9	97.2	102.2	96.4	109.6		81.5			96.2
April	105.3	107.0		109.8	98.1	102.1	97.7	113.9		81.5			95.7
May	102.2	102.8		109.9	98.1	102.0	98.0	113.9		81.5			95.4
June	101.7	102.3		109.1	98.0	103.0	97.0	104.9		81.5			95.1
July	100.4	100.7		109.2	98.2	103.2	95.9	98.5		81.5			95.1
August	99.6	99.5		108.6	98.4	104.5	95.9	98.6		85.7			95.5
September	99.4	99.3		107.2	98.6	104.4	95.9	98.6		85.7			95.5
October	100.5	100.9		105.6	97.5	104.4	95.9	98.6		85.7			95.8
November	100.1	100.3		107.3	98.0	104.0	95.9	98.6		85.7			96.0
December	99.8	99.9		106.7	98.0	104.2	95.9	98.6		85.7			95.9
2016													
January (P)	99.4	99.2		107.0	97.4	104.2	95.9	98.6		85.7			98.0
<b>Percentage Change (P)</b>													
Jan 2016 over Dec 2015	-0.4	-0.7		0.3	-0.6	0.0	0.0	0.0		0.0			2.2
Jan 2016 over Jan 2015	-6.8	-8.8		-2.3	-3.0	1.5	-0.5	-10.0		9.7			1.9

Source : Samoa Bureau Statistics

(P): Provisional figures

Note: n.a. Not applicable

**Table 4. LOCAL GOODS COMPONENT OF THE CONSUMER PRICE INDEX**  
(Base Period : Average Prices August 2010 = 100)

Group	All Items	Food and Non Alcoholic Beverages	Alcoholic Beverages and Tobacco	Clothing and Footwear	Housing, Water, Electricity, Gas and other Fuels	Furnishings, Household Equipment and Maintenance	Health	Transport	Communication	Recreation and Culture	Education	Restaurants	Miscellaneous goods and services
<b>Weights</b>	<b>575.2</b>	<b>229.8</b>	<b>79.6</b>	<b>6.4</b>	<b>60.6</b>	<b>8.6</b>	<b>3.0</b>	<b>50.3</b>	<b>58.2</b>	<b>32.7</b>	<b>31.3</b>	<b>14.7</b>	<b>n.a.</b>
Ave - 2013	109.8	116.9	110.5	117.9	108.8	97.1	100.0	104.4	100.0	99.4	101.6	101.6	
Ave - 2014	108.1	106.4	114.4	131.1	113.4	94.6	170.0	113.9	100.0	99.8	101.6	109.4	
Ave - 2015	114.0	120.0	118.4	133.0	104.1	95.1	174.4	119.8	99.9	99.8	103.4	117.1	
2015													
January	114.4	117.0	117.5	117.9	116.2	95.0	170.0	129.0	100.0	99.8	103.4	109.4	
February	113.1	117.2	117.5	117.9	116.2	95.0	170.0	114.2	100.0	99.8	103.4	109.4	
March	112.6	116.4	117.5	135.5	111.1	95.0	170.0	112.5	100.0	99.8	103.4	118.7	
April	114.4	119.7	115.6	135.5	111.1	95.5	170.0	121.3	100.0	99.8	103.4	118.7	
May	112.5	114.0	115.7	135.5	111.1	95.5	170.0	125.1	100.0	99.8	103.4	118.7	
June	113.5	119.7	117.6	136.2	97.8	95.5	177.5	123.0	100.0	99.8	103.4	118.7	
July	116.9	125.9	117.6	136.2	101.9	95.5	177.5	128.4	100.0	99.8	103.4	118.7	
August	112.7	120.4	117.4	136.2	93.7	95.5	177.5	116.0	99.8	99.8	103.4	118.7	
September	111.0	113.5	121.0	136.2	93.7	95.5	177.5	123.1	99.8	99.8	103.4	118.7	
October	114.3	119.8	121.0	136.2	102.9	95.5	177.5	120.6	99.8	99.8	103.4	118.7	
November	115.2	124.3	121.2	136.2	102.9	93.9	177.5	110.7	99.8	99.8	103.4	118.7	
December	117.2	131.9	121.2	136.2	90.7	94.2	177.5	113.3	99.8	99.8	103.4	118.7	
2016													
January (P)	125.1	146.8	122.4	136.2	101.9	93.9	177.5	119.9	99.9	99.8	103.4	118.7	
<b>Percentage Change (P)</b>													
Jan 2016 over Dec 2015	6.7	11.3	1.0	0.0	12.4	-0.3	0.0	5.8	0.1	0.0	0.0	0.0	
Jan 2016 over Jan 2015	9.4	25.5	4.2	15.5	-12.3	-1.1	4.4	-7.1	-0.1	0.0	0.0	8.6	
<b>LOCAL ITEMS UNDERLYING INDEX</b>													
Group	All Items	Food and Non Alcoholic Beverages	Alcoholic Beverages and Tobacco	Clothing and Footwear	Housing, Water, Electricity, Gas and other Fuels	Furnishings, Household Equipment and Maintenance	Health	Transport	Communication	Recreation and Culture	Education	Restaurants	Miscellaneous goods and services
<b>Weights</b>	<b>117.4</b>	<b>75.5</b>	<b>n.a.</b>	<b>6.4</b>	<b>1.2</b>	<b>8.6</b>	<b>0.9</b>	<b>9.1</b>	<b>n.a.</b>	<b>1.0</b>	<b>n.a.</b>	<b>14.7</b>	<b>n.a.</b>
Ave - 2013	103.8	105.5		117.9	105.9	97.1	100.0	90.5		100.0		101.6	
Ave - 2014	105.0	104.8		131.1	111.5	94.6	100.0	90.5		100.0		109.4	
Ave - 2015	106.6	105.5		133.0	112.0	95.1	114.6	90.5		100.0		117.1	
2015													
January	103.5	103.6		117.9	111.5	95.0	100.0	90.5		100.0		109.4	
February	104.2	104.8		117.9	111.5	95.0	100.0	90.5		100.0		109.4	
March	106.5	104.9		135.5	111.5	95.0	100.0	90.5		100.0		118.7	
April	106.8	105.3		135.5	111.5	95.5	100.0	90.5		100.0		118.7	
May	107.3	106.1		135.5	111.5	95.5	100.0	90.5		100.0		118.7	
June	107.4	105.9		136.2	112.3	95.5	125.0	90.5		100.0		118.7	
July	107.4	106.0		136.2	112.3	95.5	125.0	90.5		100.0		118.7	
August	107.4	106.0		136.2	112.3	95.5	125.0	90.5		100.0		118.7	
September	107.5	106.2		136.2	112.3	95.5	125.0	90.5		100.0		118.7	
October	107.1	105.5		136.2	112.0	95.5	125.0	90.5		100.0		118.7	
November	107.5	106.3		136.2	113.4	93.9	125.0	90.5		100.0		118.7	
December	106.9	105.3		136.2	111.6	94.2	125.0	90.5		100.0		118.7	
2016													
January (P)	107.7	106.5		136.2	113.4	93.9	125.0	90.5		100.0		118.7	
<b>Percentage Change (P)</b>													
Jan 2016 over Dec 2015	0.7	1.1		0.0	1.6	-0.3	0.0	0.0		0.0		0.0	
Jan 2016 over Jan 2015	4.1	2.8		15.5	1.7	-1.2	25.0	0.0		0.0		8.5	

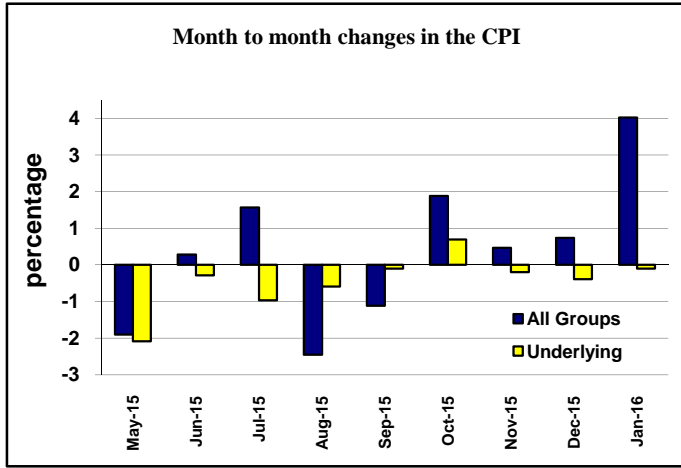
Source : Samoa Bureau Statistics

(P): Provisional figures

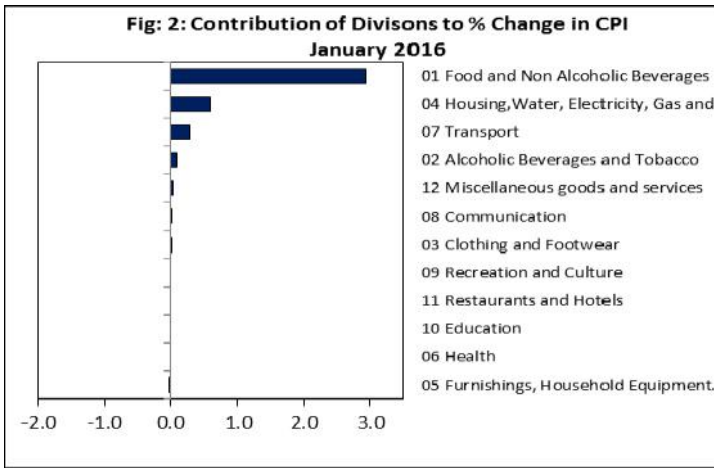
Note: n.a. Not applicable



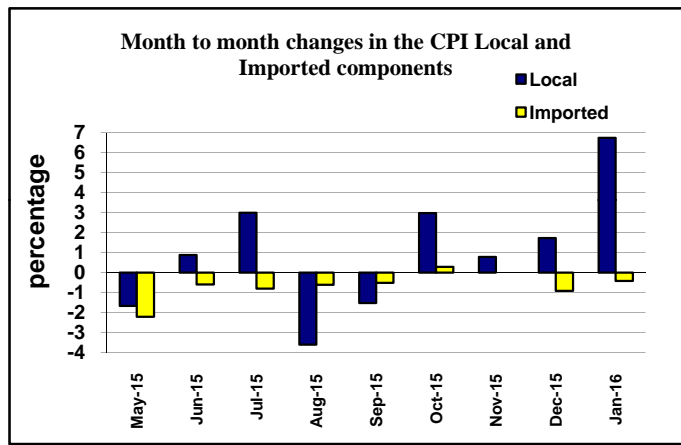
Graph.1



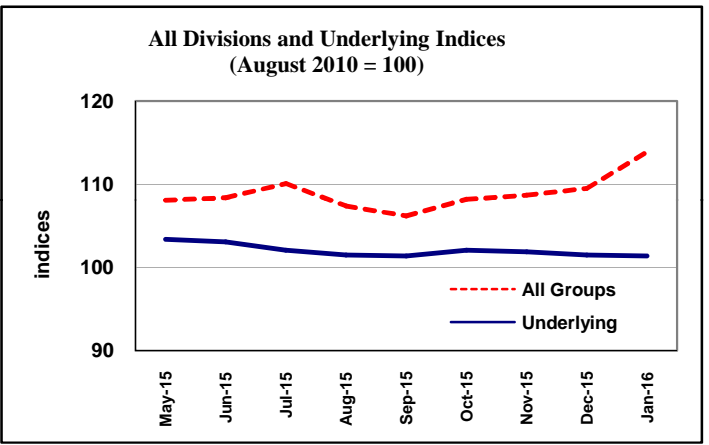
Graph.2



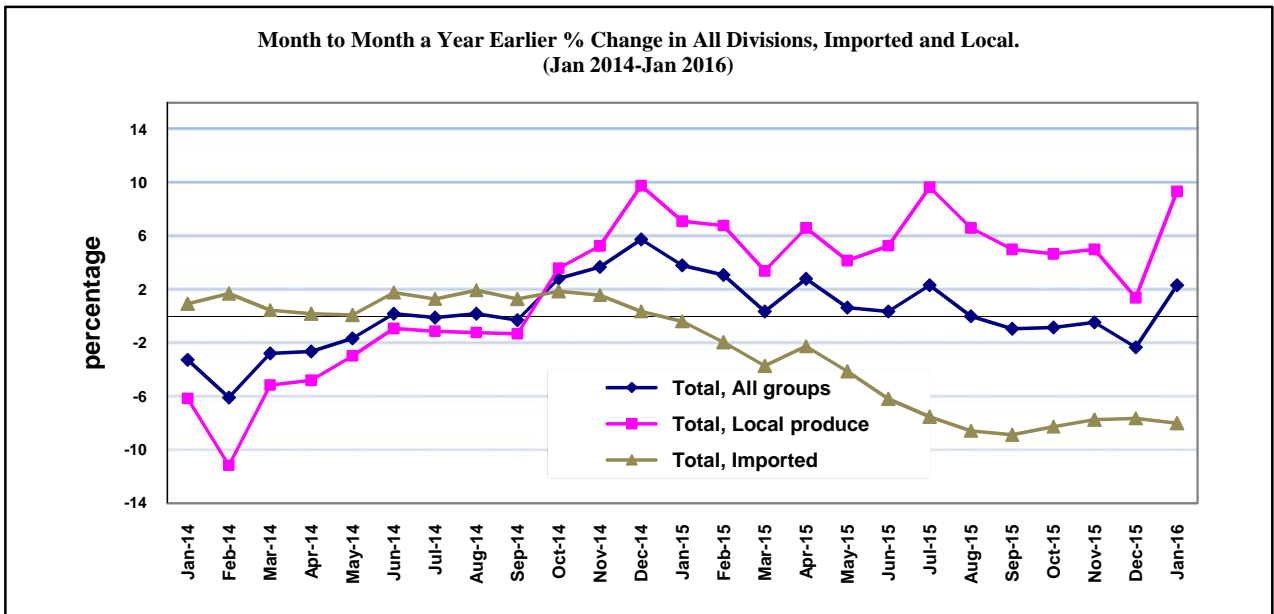
Graph.3



Graph.4



Graph 5



Source: Samoa Bureau of Statistics