

Please address all correspondence to the Government Statistician  
 In reply, please quote the file reference



File Ref: IAS Q2/15

GOVERNMENT OF SAMOA

# SAMOA BUREAU OF STATISTICS

## International Arrival Statistics SECOND QUARTER 2015

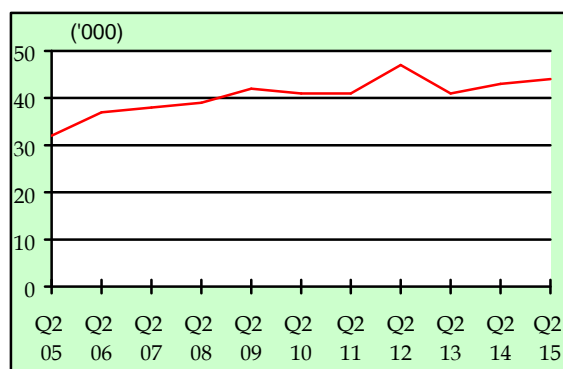
### HIGHLIGHTS OF THE QUARTER

This quarter compared with second quarter 2014:

- Total arrivals (44,022) were up by 2 percent.
- Total visitors (31,845) were up down 1 percent.
- More visitors arrived from New Zealand (up by 1,223) and USA (up by 678) but fewer visitors arrived from American Samoa (down by 1,258), and Australia (down by 1,081).
- Samoa residents departed on more trips to American Samoa (up by 1,056), Australia (up by 205) and USA (up by 101), but fewer to New Zealand (down by 6,312).
- Samoa residents departed on a total of 12,073 trips, down by 10 percent.

As usual, Air being the most preferred mode of travel to Samoa, accounting for 94.6 percent (41,662) of total arrivals, while those that arrived by Sea accounted for the remaining 5.4 percent (2,360).

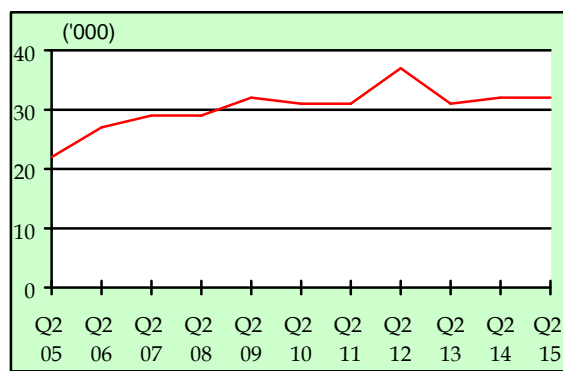
Fig. 1.1: 2<sup>nd</sup> Quarter Total Arrivals, 2005 - 2015



### 1.2 TOTAL VISITORS

Total Visitors of 31,845 for the quarter under review revealed an increase of 18.8 percent over the previous quarter, and a decrease of 0.4 percent in comparison to the corresponding quarter of April – June 2014. (Refer Fig. 1.2).

Fig. 1.2: 2<sup>nd</sup> Quarter Total Visitors, 2005 - 2015



| Q2 2015      | Number | Change from previous quarter | Change from previous year |
|--------------|--------|------------------------------|---------------------------|
| All Arrivals | 44,022 | 14.3%                        | 1.5%                      |
| All Visitors | 31,845 | 18.8%                        | -0.4%                     |

### OVERVIEW

#### 1. ARRIVALS

##### 1.1 TOTAL ARRIVALS

The total International Arrival Statistics documented during the reference period (table 1) revealed an increase of 14.3 percent when compared to the previous quarter (Jan - Mar 2015) and an increase of 1.5 percent over the corresponding quarter of April - June 2014. (Refer Fig. 1.1).

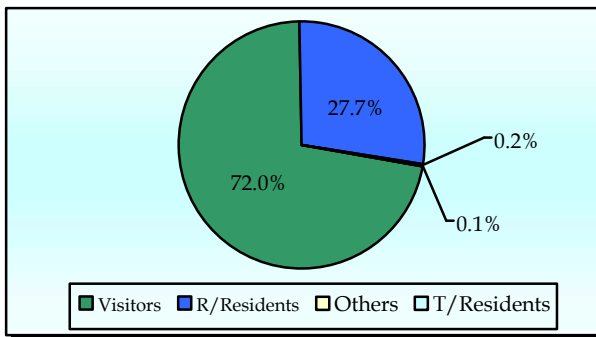
**1.3 TOTAL ARRIVALS BY PURPOSE OF ENTRY**

Visitors, including transit, made up the largest component of all arrivals with 37.2 percent recorded for males (16,409) and 34.7 percent for females (15,271).

Male and female returning residents made up 16.0 percent (7,036) and 11.7 (5,141) percent respectively of total arrivals. Temporary residents made up 0.1 percent (62) being males and also 0.1 percent (37) being females. Other purposes of entry made up the remainder of 0.2 percent of total arrival. (Refer Fig. 1.3).

The majority of inbound travellers to Samoa during the reference period were aged between 20 years and 59 years.

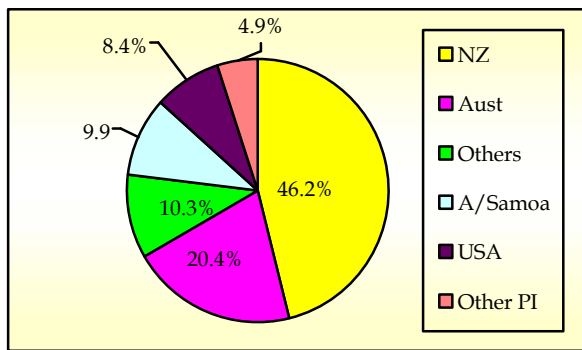
Fig. 1.3: Total Arrivals, by Purpose of Entry



**1.4 VISITORS ARRIVALS BY COUNTRY OF USUAL RESIDENCE**

New Zealand still remains as the leading country in visitors' arrival by country of usual residence (Table 3) accounting for 46.2 percent of total visitors with 14,705. Australia followed next with a distant 20.4 percent share (6,483) which is then trailed by American Samoa with 9.9 percent (3,145) while the United States of America anchored the principal source markets with a share of 8.4 percent (2,668). (Refer Fig. 1.4).

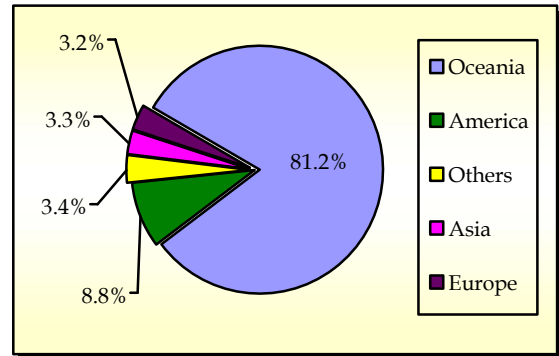
Fig. 1.4: Total Visitors, by Country of Usual Residence



**1.5 VISITORS ARRIVALS BY REGION**

The Oceanic region had the highest share of total visitors with 81.2 percent followed by America and Asia with 8.8 percent and 3.3 percent respectively. The European region showed the lowest share with 3.2 percent. (Refer Fig. 1.5)

Fig 1.5: Total Visitors, by Region



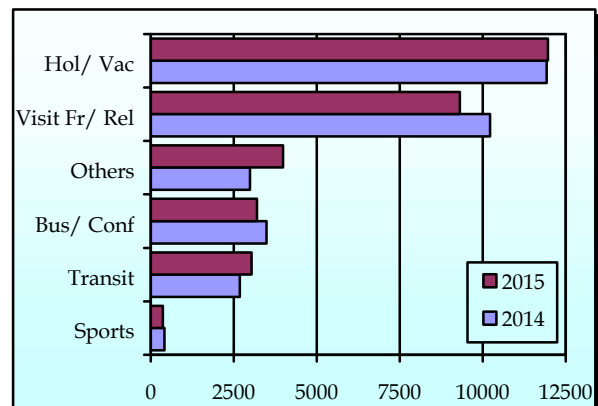
**1.6 VISITORS BY PURPOSE OF VISIT**

As illustrated in Table 4, New Zealand, Australia, American Samoa, and the United States of America constituted 84.9 percent of all visitors visiting Samoa while other countries round up the remaining 15.1 percent during the reference period.

Visitors that entered our shores on holiday/ vacation accounted for 37.6 percent of all visitors. Those that were to visit friends and relatives accounted for 29.2 percent of all visitors, while Business and conference visitors made up 10.0 percent.

Transients bound for other destinations and those who were here for other purposes registered 9.5 and 12.5 percent respectively. Fig. 1.6 depicts total visitors by purpose of visit during the reference period compared to the corresponding quarter of 2014.

Fig 1.6: Total Visitors, by Purpose of Visit



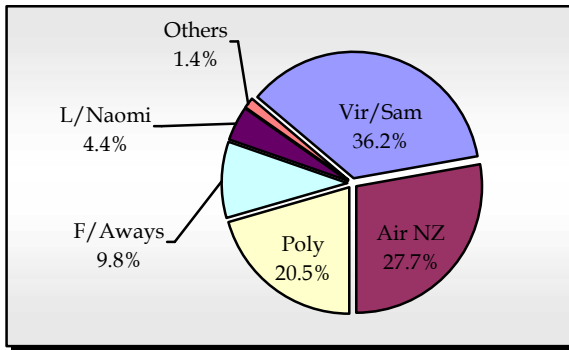
### 1.7 TOTAL VISITORS BY CARRIER

As tabulated in Table 5, Virgin Samoa (formerly known as Polynesian Blue) leads the way for arrivals by carriers' during the reference period with a 36.2 percent share (15,950 passengers) followed by Air New Zealand with a share of 27.7 percent (12,208 passengers).

Polynesian Airlines brought in 20.5 percent (9,018) of total arrivals while Fiji Airways (formerly known as Air Pacific) recorded a 9.8 percent share (4,310).

Fig. 1.7 illustrates total arrivals by carrier during the reference period.

Fig. 1.7: Total Arrivals, by Carrier



### 1.8 VISITORS DURATION AND PLACE OF STAY

The usual trend of visitor's duration of stay in Samoa (Table 6) is between 7 days and 30 days, as revealed in Fig 1.8.

59.0 percent (17,010) of total visitors reported staying in private accommodations or with families/relatives, while 35.9 percent (10,342) stayed in hotels/ motels. The remaining 5.1 percent (1,457) did not reveal their place of stay during the reference period. (Refer Fig. 1.9).

Fig. 1.8: Total Visitors, by Duration of Stay

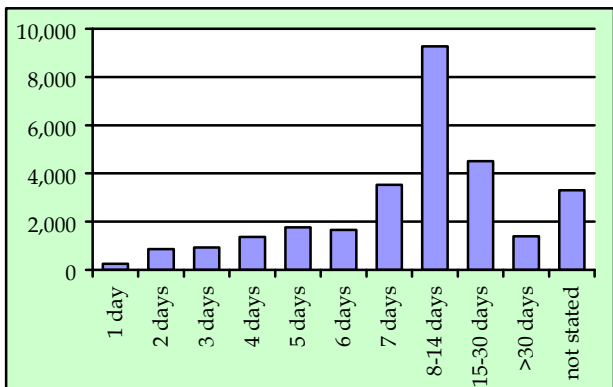
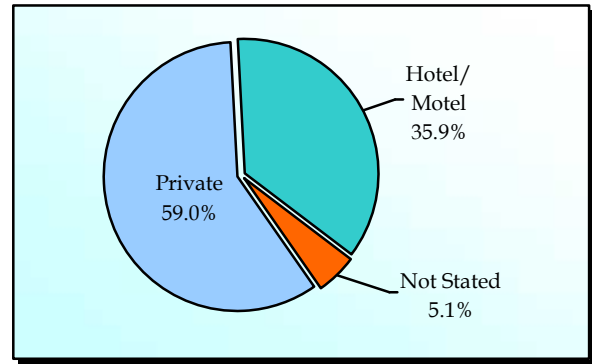


Fig. 1.9: Total Visitors, by Place of Stay



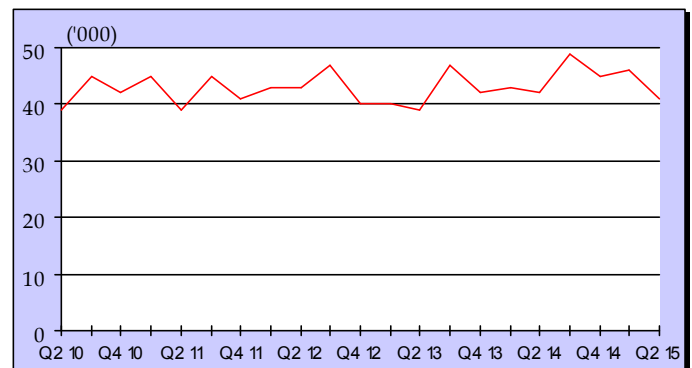
## 2. DEPARTURES

### 2.1 TOTAL DEPARTURES

The total International Departure Statistics recorded during the reference period (table 1) revealed a decrease of 9.4 percent when compared to the previous quarter (Jan – Mar 2015) and a decrease of 0.5 percent over the corresponding quarter of Apr – June 2014. (Refer Fig. 2.1).

Furthermore, Air was the most preferred mode of travel away from Samoa, accounting for 94.4 percent (39,146) of total departures, while those that departed by sea accounted for the remaining 5.6 percent (2,304).

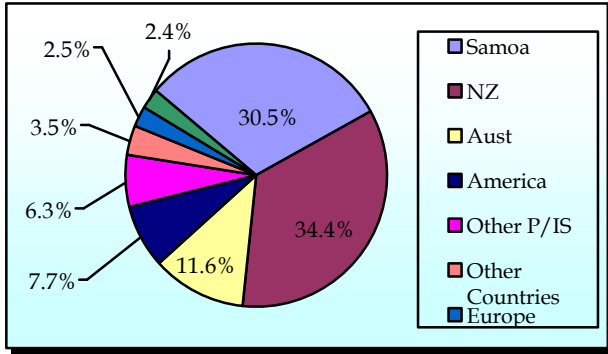
Fig. 2.1: Quarterly Total Departures, 2010 - 2015



### 2.2 TOTAL DEPARTURE BY NATIONALITY

Departures from Samoan, New Zealand, Australian, and the United States of American nationals (Table 7) accounted for 84.2 percent (34,902) of total departures. Fig. 2.2 provides a more detailed graphical analysis of total departure by nationality during the reference period.

Fig. 2.2: Total Departures, by Nationality



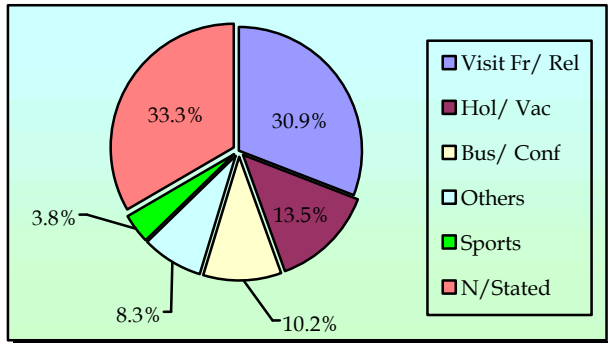
**2.3 PURPOSE OF TRAVEL ABROAD**

During the reference period, a total of 12,073 (Table 8) Samoa citizens left our shores on overseas trips. Of this total, 54.7 percent (6,603) were males and the remaining 45.3 percent (5,470) were females.

Visiting friends/ relatives abroad made up the largest component of all Samoa citizens travelling abroad accounting for 30.9 percent (3,736) followed by those that travelled overseas for Holiday/ Vacation with 13.5 percent (1,629).

Samoa citizens that travelled overseas for business and conference and other purposes reported 10.2 percent (1,229) and 8.3 percent (1,007) respectively. This is graphically illustrated in Fig. 2.3.

Fig. 2.3: Purpose of Travel Abroad



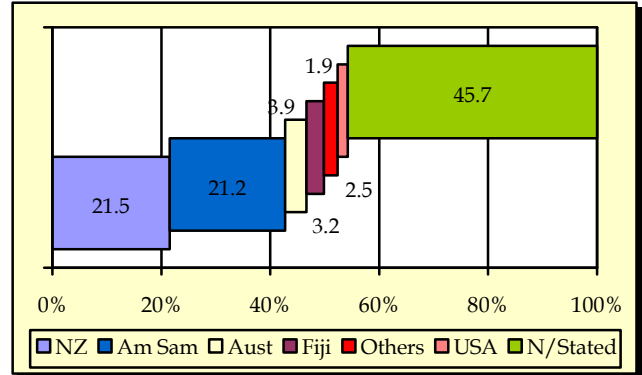
**2.4 COUNTRY OF STAY ABROAD**

The majority of Samoa citizens leaving our shores traveled to New Zealand as indicated by 21.5 percent (2,601) in Table 9 while 21.2 percent (2,557) of departing Samoa citizens traveled to American Samoa.

Australia made up 3.9 percent (475) while Fiji made up 3.2 percent (384) of Samoa citizens travelling to overseas countries.

Fig. 2.4 portrays a graphical impression of the country of stay abroad by Samoa Citizens during the reference period.

Fig. 2.4: Country of Stay Abroad



**2.5 DEPARTURE BY OCCUPATION**

As illustrated in Table 10, the majority of people leaving our shores were professionals with 16.7 percent (6,932) followed by service workers with 15.0 percent (6,210) then by students with 13.2 percent (5,469). A more comprehensive graphical analysis of departures by occupation for Samoa citizens is exhibited in Fig. 2.5.

Fig. 2.5: Departures by Occupation

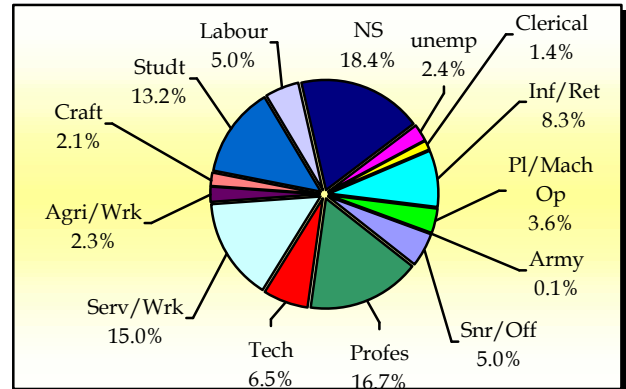
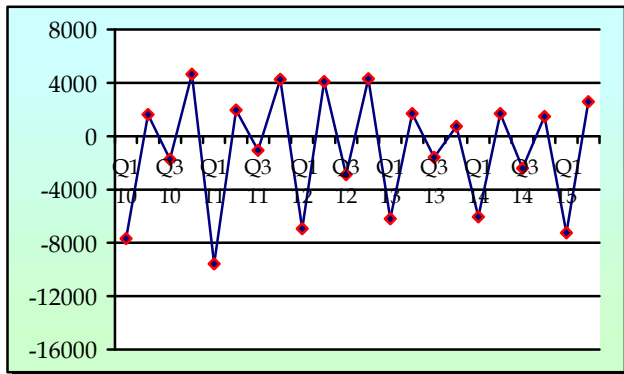


Table 10 further revealed that the majority of those leaving our shores have either completed or are currently attending Tertiary Education level, yielding 37.6 percent.

### 3. NET MIGRATION

During the reference period, net migration stood at 2,572 (Table 1) implying that there were more incoming travelers (arrivals) than out-coming travelers (departures), thereby showing an increase of 52.5 percent when compared to the same period of 2014 where net migration stood at 1,687.

Fig.3.1: Quarterly Net Migration, 2010 - 2014



Detailed information for the reference period is attached in Tables 1 – 10 and the appendix shows longer time series.

### BACKGROUND

The sourced documents for the compilation of International Arrival Statistics were the immigration arrival and departure card forms. These forms are completed by all incoming and outgoing travelers at the three local points of entry namely (1) Apia wharf (2) Faleolo and (3) Fagalii international airports.

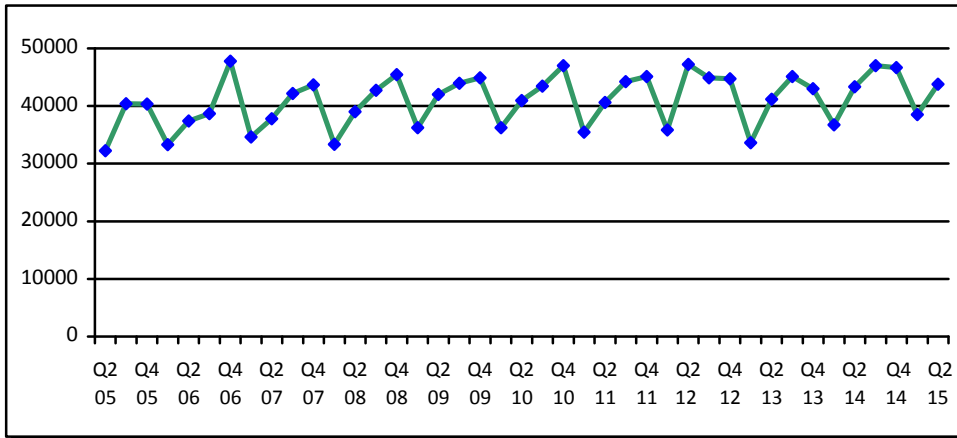
International arrival statistics are compiled on a monthly, quarterly and annual basis. These reports can also be extracted from our website: [www.sbs.gov.ws](http://www.sbs.gov.ws)

The migration report for the third quarter of 2015 will be released on 29<sup>th</sup> January 2016.

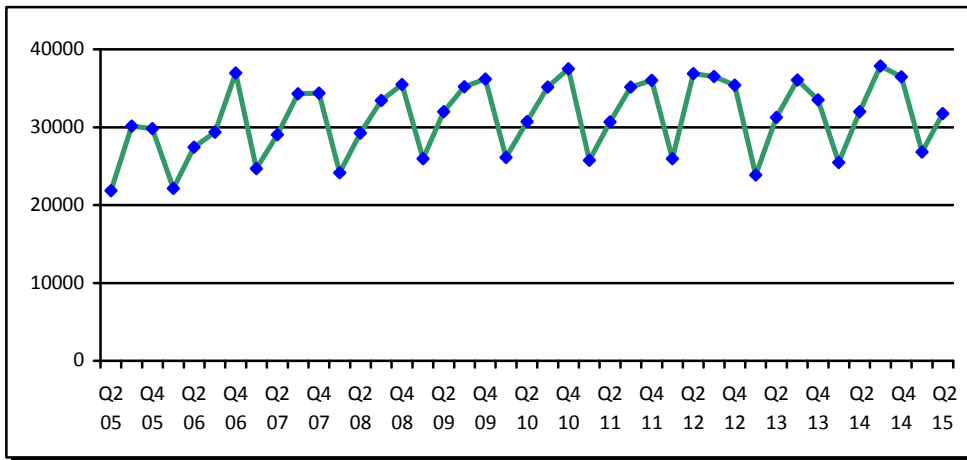
**Muagututi'a S Reupena**  
**GOVERNMENT STATISTICIAN**

**APPENDIX**

**Graph 1: Quarterly Total Arrivals, 2<sup>nd</sup> quarter 2005 – 2<sup>nd</sup> quarter 2015**



**Graph 2: Quarterly Total Visitors, 2<sup>nd</sup> quarter 2005 – 2<sup>nd</sup> quarter 2015**



**Graph 3: Quarterly Total Departures, 2<sup>nd</sup> quarter 2005 – 2<sup>nd</sup> quarter 2015**

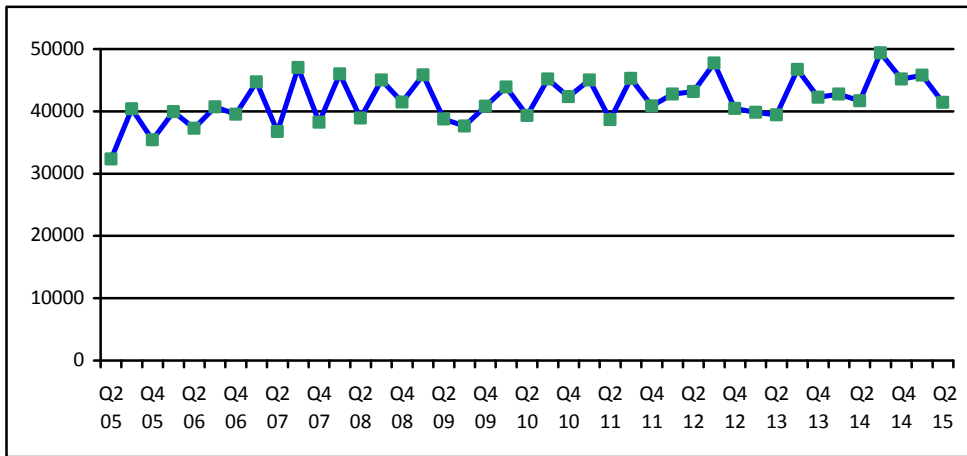


Table 1: Quarterly Arrival and Departure by Mode of Travel and Net Migration, 2004- 2015.

| Period             | Visitors Arrivals |              |               | Total Arrivals |              |               | Total Departures |              |               | Net Migration |
|--------------------|-------------------|--------------|---------------|----------------|--------------|---------------|------------------|--------------|---------------|---------------|
|                    | Air               | Sea          | Total         | Air            | Sea          | Total         | Air              | Sea          | Total         |               |
| 2004               | 93,946            | 4,209        | 98,155        | 129,517        | 11,864       | 141,381       | 131,277          | 12,303       | 143,580       | -2,199        |
| 2005               | 98,544            | 3,263        | 101,807       | 132,200        | 10,557       | 142,757       | 135,008          | 10,936       | 145,944       | -3,187        |
| 2006               | 112,411           | 3,471        | 115,882       | 147,807        | 9,349        | 157,156       | 147,991          | 9,489        | 157,480       | -324          |
| 2007               | 118,653           | 3,703        | 122,356       | 150,584        | 7,635        | 158,219       | 158,099          | 8,578        | 166,677       | -8,458        |
| 2008               | 118,459           | 3,743        | 122,202       | 151,883        | 8,628        | 160,511       | 161,482          | 9,908        | 171,390       | -10,879       |
| 2009               | 127,327           | 1,978        | 129,305       | 126,766        | 5,342        | 167,200       | 156,768          | 4,697        | 163,035       | 4,165         |
| 2010               | 126,970           | 2,530        | 129,500       | 162,052        | 5,539        | 167,591       | 164,426          | 6,326        | 170,752       | -3,161        |
| 2011               | 124,706           | 2,898        | 127,604       | 159,660        | 5,738        | 165,398       | 163,605          | 6,216        | 169,821       | -4,423        |
| 2012               | 131,945           | 2,752        | 134,697       | 167,211        | 5,509        | 172,720       | 167,842          | 6,297        | 174,139       | -1,419        |
| 2013               | 122,171           | 2,502        | 124,673       | 157,542        | 5,335        | 162,877       | 162,333          | 5,885        | 168,218       | -5,341        |
| 2014               | 128,623           | 3,172        | 131,795       | 166,045        | 7,638        | 173,713       | 170,848          | 8,272        | 179,017       | -5,304        |
| <b>2015</b>        | <b>57,197</b>     | <b>1,450</b> | <b>58,647</b> | <b>78,593</b>  | <b>3,941</b> | <b>82,534</b> | <b>82,940</b>    | <b>4,280</b> | <b>87,220</b> | ...           |
| <b>2,009</b>       |                   |              |               |                |              |               |                  |              |               |               |
| 2nd Quarter        | 31,575            | 427          | 32,002        | 40,381         | 1,650        | 42,031        | 36,599           | 2,175        | 38,774        | 3,257         |
| 3rd Quarter        | 34,626            | 564          | 35,190        | 42,535         | 1,419        | 43,954        | 36,436           | 1,190        | 37,626        | 6,328         |
| 4th Quarter        | 35,720            | 453          | 36,173        | 43,850         | 1,130        | 44,980        | 39,467           | 1,332        | 40,799        | 4,181         |
| <b>2010</b>        |                   |              |               |                |              |               |                  |              |               |               |
| 1st Quarter        | 25,662            | 463          | 26,125        | 35,293         | 919          | 36,212        | 42,563           | 1,335        | 43,898        | -7,686        |
| 2nd Quarter        | 30,040            | 677          | 30,717        | 39,257         | 1,685        | 40,942        | 37,383           | 1,933        | 39,316        | 1,626         |
| 3rd Quarter        | 34,546            | 602          | 35,148        | 42,065         | 1,374        | 43,439        | 43,804           | 1,381        | 45,185        | -1,746        |
| 4th Quarter        | 36,722            | 788          | 37,510        | 45,437         | 1,561        | 46,998        | 40,676           | 1,677        | 42,353        | 4,645         |
| <b>2011</b>        |                   |              |               |                |              |               |                  |              |               |               |
| 1st Quarter        | 24,972            | 794          | 25,766        | 34,010         | 1,440        | 35,450        | 43,290           | 1,737        | 45,027        | -9,577        |
| 2nd Quarter        | 30,092            | 590          | 30,682        | 39,208         | 1,399        | 40,607        | 37,148           | 1,509        | 38,657        | 1,950         |
| 3rd Quarter        | 34,478            | 666          | 35,144        | 42,889         | 1,355        | 44,244        | 43,784           | 1,516        | 45,300        | -1,056        |
| 4th Quarter        | 35,164            | 848          | 36,012        | 43,553         | 1,544        | 45,097        | 39,383           | 1,454        | 40,837        | 4,260         |
| <b>2012</b>        |                   |              |               |                |              |               |                  |              |               |               |
| 1st Quarter        | 25,439            | 497          | 25,936        | 34,835         | 995          | 35,830        | 41,389           | 1,377        | 42,766        | -6,936        |
| 2nd Quarter        | 35,886            | 988          | 36,874        | 45,168         | 2,085        | 47,253        | 40,819           | 2,346        | 43,165        | 4,088         |
| 3rd Quarter        | 35,890            | 607          | 36,497        | 43,867         | 1,017        | 44,884        | 46,659           | 1,101        | 47,760        | -2,876        |
| 4th Quarter        | 34,730            | 660          | 35,390        | 43,341         | 1,412        | 44,753        | 38,975           | 1,473        | 40,448        | 4,305         |
| <b>2013</b>        |                   |              |               |                |              |               |                  |              |               |               |
| 1st Quarter        | 23,293            | 580          | 23,873        | 32,484         | 1,140        | 33,624        | 38,219           | 1,602        | 39,821        | -6,197        |
| 2nd Quarter        | 30,594            | 651          | 31,245        | 39,785         | 1,365        | 41,150        | 37,728           | 1,719        | 39,447        | 1,703         |
| 3rd Quarter        | 35,463            | 593          | 36,056        | 43,688         | 1,421        | 45,109        | 45,349           | 1,349        | 46,698        | -1,589        |
| 4th Quarter        | 32,821            | 678          | 33,499        | 41,585         | 1,409        | 42,994        | 41,037           | 1,215        | 42,252        | 742           |
| <b>2014</b>        |                   |              |               |                |              |               |                  |              |               |               |
| 1st Quarter        | 24,910            | 551          | 25,461        | 35,301         | 1,415        | 36,716        | 41,142           | 1,628        | 42,770        | -6,054        |
| 2nd Quarter        | 31,255            | 728          | 31,983        | 41,286         | 2,077        | 43,363        | 39,242           | 2,434        | 41,676        | 1,687         |
| 3rd Quarter        | 36,754            | 1,119        | 37,873        | 44,966         | 2,014        | 46,980        | 47,334           | 2,051        | 49,385        | -2,405        |
| 4th Quarter        | 35,704            | 774          | 36,478        | 44,522         | 2,132        | 46,654        | 43,024           | 2,162        | 45,186        | 1,468         |
| <b>2015</b>        |                   |              |               |                |              |               |                  |              |               |               |
| 1st Quarter        | 26,203            | 599          | 26,802        | 36,931         | 1,581        | 38,512        | 43,794           | 1,976        | 45,770        | -7,258        |
| <b>2nd Quarter</b> | <b>30,994</b>     | <b>851</b>   | <b>31,845</b> | <b>41,662</b>  | <b>2,360</b> | <b>44,022</b> | <b>39,146</b>    | <b>2,304</b> | <b>41,450</b> | 2,572         |

**Source:** Ministry of the Prime Minister and Cabinet - Immigration Division, Ministry for Revenue - Customs Division, and Service Bureau of Statistics

1: Provisional figures



Table 2: Arrivals by Age, Purpose of Entry and Gender, Second Quarter 2015 <sup>1</sup>

| AGE                                | Purpose of Visit |               |               |               |               |               |                     |              |              |              |              |              |                    |            |            |            |            |            |
|------------------------------------|------------------|---------------|---------------|---------------|---------------|---------------|---------------------|--------------|--------------|--------------|--------------|--------------|--------------------|------------|------------|------------|------------|------------|
|                                    | TOTAL            |               |               | Visitors      |               |               | Returning Residents |              |              | Transit      |              |              | Temporary Resident |            |            | Others     |            |            |
|                                    | TOTAL            | Male          | Female        | Total         | Male          | Female        | Total               | Male         | Female       | Total        | Male         | Female       | Total              | Male       | Female     | Total      | Male       | Female     |
| <b>TOTAL</b>                       | <b>44,022</b>    | <b>23,527</b> | <b>20,495</b> | <b>28,644</b> | <b>14,458</b> | <b>14,186</b> | <b>12,177</b>       | <b>7,036</b> | <b>5,141</b> | <b>3,036</b> | <b>1,951</b> | <b>1,085</b> | <b>62</b>          | <b>37</b>  | <b>25</b>  | <b>103</b> | <b>45</b>  | <b>58</b>  |
| <b>0 - 4</b>                       | 1,846            | 956           | 890           | 1,324         | 671           | 653           | 410                 | 222          | 188          | 104          | 57           | 47           | 7                  | 5          | 2          | 1          | 1          | 0          |
| <b>5 - 9</b>                       | 1,587            | 799           | 788           | 1,213         | 607           | 606           | 284                 | 142          | 142          | 85           | 47           | 38           | 5                  | 3          | 2          | 0          | 0          | 0          |
| <b>10 - 14</b>                     | 1,596            | 803           | 793           | 1,254         | 647           | 607           | 261                 | 125          | 136          | 75           | 30           | 45           | 1                  | 0          | 1          | 5          | 1          | 4          |
| <b>15 - 19</b>                     | 2,270            | 1,143         | 1,127         | 1,504         | 694           | 810           | 645                 | 390          | 255          | 112          | 55           | 57           | 3                  | 2          | 1          | 6          | 2          | 4          |
| <b>20 - 24</b>                     | 3,561            | 1,808         | 1,753         | 2,187         | 921           | 1,266         | 1,137               | 731          | 406          | 228          | 153          | 75           | 4                  | 2          | 2          | 5          | 1          | 4          |
| <b>25 - 29</b>                     | 3,918            | 2,020         | 1,898         | 2,465         | 1,086         | 1,379         | 1,115               | 712          | 403          | 325          | 218          | 107          | 3                  | 2          | 1          | 10         | 2          | 8          |
| <b>30 - 34</b>                     | 3,730            | 2,026         | 1,704         | 2,359         | 1,155         | 1,204         | 1,069               | 667          | 402          | 288          | 198          | 90           | 6                  | 3          | 3          | 8          | 3          | 5          |
| <b>35 - 39</b>                     | 3,421            | 1,980         | 1,441         | 2,044         | 1,107         | 937           | 1,070               | 661          | 409          | 292          | 206          | 86           | 8                  | 3          | 5          | 7          | 3          | 4          |
| <b>40 - 44</b>                     | 3,783            | 2,107         | 1,676         | 2,331         | 1,228         | 1,103         | 1,160               | 686          | 474          | 277          | 184          | 93           | 4                  | 3          | 1          | 11         | 6          | 5          |
| <b>45 - 49</b>                     | 4,015            | 2,145         | 1,870         | 2,575         | 1,310         | 1,265         | 1,130               | 643          | 487          | 297          | 187          | 110          | 5                  | 2          | 3          | 8          | 3          | 5          |
| <b>50 - 54</b>                     | 4,016            | 2,143         | 1,873         | 2,677         | 1,401         | 1,276         | 1,014               | 534          | 480          | 313          | 199          | 114          | 3                  | 2          | 1          | 9          | 7          | 2          |
| <b>55 - 59</b>                     | 3,635            | 2,006         | 1,629         | 2,321         | 1,263         | 1,058         | 1,034               | 553          | 481          | 267          | 186          | 81           | 2                  | 0          | 2          | 11         | 4          | 7          |
| <b>60 - 64</b>                     | 2,730            | 1,493         | 1,237         | 1,815         | 988           | 827           | 747                 | 399          | 348          | 154          | 97           | 57           | 4                  | 4          | 0          | 10         | 5          | 5          |
| <b>65 - 69</b>                     | 2,058            | 1,106         | 952           | 1,395         | 738           | 657           | 541                 | 295          | 246          | 111          | 66           | 45           | 4                  | 4          | 0          | 7          | 3          | 4          |
| <b>70 - 74</b>                     | 1,063            | 588           | 475           | 693           | 384           | 309           | 300                 | 158          | 142          | 65           | 42           | 23           | 2                  | 1          | 1          | 3          | 3          | 0          |
| <b>75 +</b>                        | 793              | 404           | 389           | 487           | 258           | 229           | 260                 | 118          | 142          | 43           | 26           | 17           | 1                  | 1          | 0          | 2          | 1          | 1          |
| <b>% Distribution <sup>2</sup></b> | <b>100.0</b>     | <b>53.4</b>   | <b>46.6</b>   | <b>65.1</b>   | <b>32.8</b>   | <b>32.2</b>   | <b>27.7</b>         | <b>16.0</b>  | <b>11.7</b>  | <b>6.9</b>   | <b>4.4</b>   | <b>2.5</b>   | <b>0.1</b>         | <b>0.1</b> | <b>0.1</b> | <b>0.2</b> | <b>0.1</b> | <b>0.1</b> |

**Source:** Ministry of the Prime Minister and Cabinet - Immigration Division, Ministry for Revenue - Customs Division and Samoa Bureau of Statistics.

**Note :** Total visitors include transit.

: Sports was re-introduced again in the Purpose of Visit Category as of August 2008.

1: Provisional figures

2: Figures are subject to rounding errors

Table 3: Visitors Arrivals by Country of Usual Residence and Mode of Travel, Second Quarter 2015 <sup>1</sup>

| Country of Usual Residence     | Mode of Travel |            | TOTAL         | Percentage <sup>2</sup> |
|--------------------------------|----------------|------------|---------------|-------------------------|
|                                | Air            | Sea        |               |                         |
| <b>OCEANIA</b>                 | <b>25,126</b>  | <b>745</b> | <b>25,871</b> | <b>81.2</b>             |
| American Samoa                 | 2,889          | 256        | 3,145         | 9.9                     |
| Fiji                           | 756            | 6          | 762           | 2.4                     |
| Cook Island                    | 26             | 0          | 26            | 0.1                     |
| Other Pacific Is               | 651            | 99         | 750           | 2.4                     |
| New Zealand                    | 14,399         | 306        | 14,705        | 46.2                    |
| Australia                      | 6,405          | 78         | 6,483         | 20.4                    |
| <b>EUROPE</b>                  | <b>1,007</b>   | <b>9</b>   | <b>1,016</b>  | <b>3.2</b>              |
| United Kingdom                 | 412            | 2          | 414           | 1.3                     |
| Scandinavia                    | 51             | 5          | 56            | 0.2                     |
| Benelux                        | 15             | 0          | 15            | 0.0                     |
| Germany                        | 370            | 2          | 372           | 1.2                     |
| Other Europe                   | 159            | 0          | 159           | 0.5                     |
| <b>AMERICA</b>                 | <b>2,749</b>   | <b>61</b>  | <b>2,810</b>  | <b>8.8</b>              |
| U.S.A                          | 2,612          | 56         | 2,668         | 8.4                     |
| Canada                         | 137            | 5          | 142           | 0.4                     |
| <b>ASIA</b>                    | <b>1,052</b>   | <b>6</b>   | <b>1,058</b>  | <b>3.3</b>              |
| Japan                          | 150            | 1          | 151           | 0.5                     |
| China                          | 593            | 1          | 594           | 1.9                     |
| Other Asia                     | 286            | 4          | 290           | 0.9                     |
| Korea                          | 23             | 0          | 23            | 0.1                     |
| <b>OTHERS</b>                  | <b>1,056</b>   | <b>30</b>  | <b>1,086</b>  | <b>3.4</b>              |
| <b>NOT STATED</b>              | <b>4</b>       | <b>0</b>   | <b>4</b>      | <b>0.0</b>              |
| <b>TOTAL</b>                   | <b>30,994</b>  | <b>851</b> | <b>31,845</b> | <b>100%</b>             |
| <b>PERCENTAGE DISTRIBUTION</b> | <b>97.3</b>    | <b>2.7</b> | <b>100.0%</b> |                         |

**Source:** Ministry of the Prime Minister and Cabinet - Immigration Division, Ministry for Revenue - Customs Division, and Samoa Bureau of Statistics.

1: Provisional figures.

2: Figures are subject to rounding errors

- Note:**
- (i) Visitors refer to all person visiting Samoa other than returning residents and also expatriates who are employed and living in Samoa (**include transit**).
  - (ii) Visitors also include Samoan citizens whose country of usual residence are country abroad.
  - (iii) **Scandinavia** - refers to countries of Norway, Sweden, Finland and Denmark.
  - (iv) **Benelux:** - refers to countries of Belgium, Netherlands and Luxembourg.
  - (v) **Exclude Cruise Liner Passengers.**

Table 4: Total Visitors by Usual Residence and Purpose of Visit, Second Quarter 2015 <sup>1</sup>

| Usual Residence                             | Purpose of Visit |                |                      |                         |                             |            |              |              |            |
|---|------------------|----------------|----------------------|-------------------------|-----------------------------|------------|--------------|--------------|------------|
|   | TOTAL            | % <sup>2</sup> | Holiday/<br>Vacation | Business/<br>Conference | Visit Friends/<br>Relatives | Sports     | Transit      | Others       | Not Stated |
| <b>TOTAL</b>                                | <b>31,845</b>    |                | <b>11,964</b>        | <b>3,196</b>            | <b>9,306</b>                | <b>363</b> | <b>3,036</b> | <b>3,106</b> | <b>874</b> |
| American Samoa                              | 3,145            | 9.9            | 560                  | 171                     | 1,067                       | 21         | 612          | 317          | 397        |
| Fiji  | 762              | 2.4            | 79                   | 230                     | 122                         | 36         | 159          | 108          | 28         |
| Cook Island                                 | 26               | 0.1            | 3                    | 11                      | 5                           | 0          | 1            | 1            | 5          |
| Other Pacific Is                            | 750              | 2.4            | 73                   | 160                     | 100                         | 21         | 249          | 121          | 26         |
| New Zealand                                 | 14,705           | 46.2           | 6,120                | 1,424                   | 4,823                       | 117        | 617          | 1,411        | 193        |
| Australia                                   | 6,483            | 20.4           | 2,895                | 641                     | 2,154                       | 127        | 185          | 395          | 86         |
| United Kingdom                              | 414              | 1.3            | 270                  | 36                      | 30                          | 6          | 22           | 48           | 2          |
| Scandinavia                                 | 56               | 0.2            | 51                   | 2                       | 2                           | 0          | 1            | 0            | 0          |
| Benelux                                     | 15               | 0.0            | 8                    | 5                       | 2                           | 0          | 0            | 0            | 0          |
| Germany                                     | 372              | 1.2            | 311                  | 13                      | 13                          | 0          | 16           | 19           | 0          |
| Other Europe                                | 159              | 0.5            | 116                  | 11                      | 15                          | 4          | 4            | 4            | 5          |
| U.S.A.                                      | 2,668            | 8.4            | 683                  | 227                     | 830                         | 17         | 382          | 461          | 68         |
| Canada                                      | 142              | 0.4            | 74                   | 15                      | 12                          | 0          | 18           | 22           | 1          |
| Japan                                       | 151              | 0.5            | 51                   | 43                      | 23                          | 3          | 7            | 14           | 10         |
| China                                       | 594              | 1.9            | 82                   | 99                      | 41                          | 5          | 275          | 71           | 21         |
| Other Asia                                  | 290              | 0.9            | 48                   | 35                      | 23                          | 2          | 141          | 12           | 29         |
| Other Countries                             | 1,086            | 3.4            | 533                  | 68                      | 43                          | 4          | 334          | 101          | 3          |
| Korea                                       | 23               | 0.1            | 5                    | 5                       | 1                           | 0          | 11           | 1            | 0          |
| Not Stated                                  | 4                | 0.1            | 2                    | 0                       | 0                           | 0          | 2            | 0            | 0          |
| <b>Percentage Distribution <sup>2</sup></b> | <b>100.0</b>     |                | <b>37.6</b>          | <b>10.0</b>             | <b>29.2</b>                 | <b>1.1</b> | <b>9.5</b>   | <b>9.8</b>   | <b>2.7</b> |

**Source:** Ministry of the Prime Minister and Cabinet - Immigration Division, Ministry for Revenue - Customs Division and Samoa Bureau of Statistics.

**Note :** Total visitors include transit.

: Sports was re-introduced again in the Purpose of Visit Category as of August 2008.

1: Provisional figures

2: Figures are subject to rounding errors

Table 5: Total Arrivals by Carrier and Purpose of Entry, Second Quarter 2015 <sup>1</sup>

| Carrier                   | TOTAL         | Purpose of Entry    |                |                |                |             |
|---------------------------|---------------|---------------------|----------------|----------------|----------------|-------------|
|                           |               | Returning Residents | % <sup>2</sup> | Total Visitors | % <sup>2</sup> |             |
| <b>TOTAL</b>              | <b>44,022</b> | <b>100%</b>         | <b>12,177</b>  | <b>27.7</b>    | <b>31,845</b>  | <b>72.3</b> |
| <b>AIR</b>                | <b>41,662</b> | <b>94.6</b>         | <b>10,668</b>  | <b>24.2</b>    | <b>30,994</b>  | <b>70.4</b> |
| Virgin Samoa <sup>3</sup> | 15,950        | 36.2                | 3,450          | 7.8            | 12,500         | 28.4        |
| Polynesian                | 9,018         | 20.5                | 3,527          | 8.0            | 5,491          | 12.5        |
| Inter Island              | 23            | 0.1                 | 4              | 0.0            | 19             | 0.0         |
| Air New Zealand           | 12,208        | 27.7                | 2,699          | 6.1            | 9,509          | 21.6        |
| Fiji Airways <sup>4</sup> | 4,310         | 9.8                 | 953            | 2.2            | 3,357          | 7.6         |
| Other Air Carrier         | 153           | 0.3                 | 35             | 0.1            | 118            | 0.3         |
| <b>SEA</b>                | <b>2,360</b>  | <b>5.2</b>          | <b>1,509</b>   | <b>3.4</b>     | <b>851</b>     | <b>1.9</b>  |
| Lady Naomi                | 1,934         | 4.4                 | 1,386          | 3.1            | 548            | 1.2         |
| Yacht                     | 17            | 0.0                 | 3              | 0.0            | 14             | 0.0         |
| Other Sea Carrier         | 409           | 0.8                 | 120            | 0.3            | 289            | 0.7         |

**Source:** Ministry of the Prime Minister and Cabinet - Immigration Division, Ministry for Revenue - Customs Division and Samoa Bureau of Statistics.

**Note:** Total visitors include transit.

- 1: Provisional figures
- 2: Figures are subject to rounding errors
- 3: Polynesian Blue is now called Virgin Samoa
- 4: Air Pacific is now called Fiji Airways

Table 6: Visitors by Duration of Stay and Place of Stay, Second Quarter 2015<sup>1</sup>

| Duration of Stay               | Place of Stay |               |               |              |
|--------------------------------|---------------|---------------|---------------|--------------|
|                                | TOTAL         | Hotel/Motel   | Private       | Not Stated   |
| <b>TOTAL</b>                   | <b>28,809</b> | <b>10,342</b> | <b>17,010</b> | <b>1,457</b> |
| 1day                           | 253           | 116           | 117           | 20           |
| 2days                          | 859           | 494           | 337           | 28           |
| 3days                          | 934           | 482           | 426           | 26           |
| 4days                          | 1,363         | 660           | 635           | 68           |
| 5days                          | 1,766         | 994           | 659           | 113          |
| 6days                          | 1,655         | 1,068         | 455           | 132          |
| 7days                          | 3,523         | 1,763         | 1,538         | 222          |
| 8-14days                       | 9,264         | 3,641         | 5,162         | 461          |
| 15-30days                      | 4,507         | 717           | 3,654         | 136          |
| 31-60days                      | 860           | 131           | 667           | 62           |
| 61-90days                      | 149           | 18            | 124           | 7            |
| 91-180days                     | 243           | 24            | 210           | 9            |
| 181-365days                    | 137           | 19            | 97            | 21           |
| Not Stated                     | 3,296         | 215           | 2,929         | 152          |
| <b>Percentage Distribution</b> | <b>100.0</b>  | <b>35.9</b>   | <b>59.0</b>   | <b>5.1</b>   |

**Source:** Ministry of the Prime Minister and Cabinet - Immigration Division,  
Ministry for Revenue - Customs Division and Samoa Bureau of Statistics.

**Note:** Visitors here, exclude transit.

1: Provisional figures

Table 7: Departures by Nationality, Citizenship and Gender, Second Quarter, 2015 <sup>1</sup>

| Nationality                        | TOTAL         |              |               | Samoa Citizen |               |              | Temporary Residents |            |            | Visitors    |               |               | Other Citizens |            |            |           |
|------------------------------------|---------------|--------------|---------------|---------------|---------------|--------------|---------------------|------------|------------|-------------|---------------|---------------|----------------|------------|------------|-----------|
|                                    | TOTAL         | Male         | Female        | Total         | Male          | Female       | Total               | Male       | Female     | Total       | Male          | Female        | Total          | Male       | Female     |           |
| <b>TOTAL</b>                       | <b>41,450</b> | <b>100.0</b> | <b>21,701</b> | <b>19,749</b> | <b>12,073</b> | <b>6,603</b> | <b>5,470</b>        | <b>265</b> | <b>132</b> | <b>133</b>  | <b>28,901</b> | <b>14,826</b> | <b>14,075</b>  | <b>211</b> | <b>140</b> | <b>71</b> |
| Samoa                              | 12,637        | 30.5         | 6,865         | 5,772         | 12,073        | 6,603        | 5,470               | 20         | 8          | 12          | 538           | 252           | 286            | 6          | 2          | 4         |
| American Samoa                     | 979           | 2.4          | 509           | 470           | 0             | 0            | 0                   | 3          | 0          | 3           | 975           | 509           | 466            | 1          | 0          | 1         |
| Fiji                               | 770           | 1.9          | 465           | 305           | 0             | 0            | 0                   | 15         | 7          | 8           | 745           | 454           | 291            | 10         | 4          | 6         |
| Cook Island                        | 10            | 0.0          | 7             | 3             | 0             | 0            | 0                   | 0          | 0          | 0           | 9             | 6             | 3              | 1          | 1          | 0         |
| Other Pacific Is                   | 839           | 2.0          | 506           | 333           | 0             | 0            | 0                   | 10         | 7          | 3           | 796           | 470           | 326            | 33         | 29         | 4         |
| New Zealand                        | 14,275        | 34.4         | 6,843         | 7,432         | 0             | 0            | 0                   | 106        | 53         | 53          | 14,130        | 6,768         | 7,362          | 39         | 22         | 17        |
| Australia                          | 4,814         | 11.6         | 2,455         | 2,359         | 0             | 0            | 0                   | 43         | 21         | 22          | 4,759         | 2,427         | 2,332          | 12         | 7          | 5         |
| United Kingdom                     | 186           | 0.4          | 104           | 82            | 0             | 0            | 0                   | 4          | 1          | 3           | 182           | 103           | 79             | 0          | 0          | 0         |
| Scandinavia                        | 11            | 0.0          | 5             | 6             | 0             | 0            | 0                   | 0          | 0          | 0           | 11            | 5             | 6              | 0          | 0          | 0         |
| Benelux                            | 12            | 0.0          | 6             | 6             | 0             | 0            | 0                   | 2          | 2          | 0           | 10            | 4             | 6              | 0          | 0          | 0         |
| Germany                            | 378           | 0.9          | 187           | 191           | 0             | 0            | 0                   | 1          | 1          | 0           | 377           | 186           | 191            | 0          | 0          | 0         |
| Other Europe                       | 511           | 1.2          | 272           | 239           | 0             | 0            | 0                   | 6          | 4          | 2           | 501           | 266           | 235            | 4          | 2          | 2         |
| United States                      | 3,176         | 7.7          | 1,685         | 1,491         | 0             | 0            | 0                   | 26         | 12         | 14          | 3,118         | 1,655         | 1,463          | 32         | 18         | 14        |
| Canada                             | 172           | 0.4          | 89            | 83            | 0             | 0            | 0                   | 0          | 0          | 0           | 171           | 88            | 83             | 1          | 1          | 0         |
| Japan                              | 156           | 0.4          | 98            | 58            | 0             | 0            | 0                   | 5          | 4          | 1           | 148           | 92            | 56             | 3          | 2          | 1         |
| Other Asia                         | 516           | 1.2          | 331           | 185           | 0             | 0            | 0                   | 19         | 8          | 11          | 451           | 288           | 163            | 46         | 35         | 11        |
| Others                             | 1,235         | 3.0          | 737           | 498           | 0             | 0            | 0                   | 1          | 1          | 0           | 1,231         | 734           | 497            | 3          | 2          | 1         |
| China                              | 716           | 1.7          | 500           | 216           | 0             | 0            | 0                   | 4          | 3          | 1           | 693           | 483           | 210            | 19         | 14         | 5         |
| Korea                              | 29            | 0.1          | 18            | 11            | 0             | 0            | 0                   | 0          | 0          | 0           | 29            | 18            | 11             | 0          | 0          | 0         |
| Not Stated                         | 28            | 0.2          | 19            | 9             | 0             | 0            | 0                   | 0          | 0          | 0           | 27            | 18            | 9              | 1          | 1          | 0         |
| <b>% Distribution <sup>2</sup></b> | <b>100.1</b>  | <b>52.4</b>  | <b>47.6</b>   | <b>29.1</b>   | <b>15.9</b>   | <b>25.2</b>  | <b>0.6</b>          | <b>0.3</b> | <b>0.3</b> | <b>69.7</b> | <b>35.8</b>   | <b>34.0</b>   | <b>0.5</b>     | <b>0.3</b> | <b>0.2</b> |           |

Source: Ministry of the Prime Minister and Cabinet - Immigration Division, Ministry for Revenue - Customs Division and Samoa Bureau of Statistics.

1: Provisional figures

2: Figures are subject to rounding errors

Table 8: Departures by Purpose of Travel and Gender (Samoa-citizen-only), Second Quarter, 2015 <sup>1</sup>

| Purpose of Travel                  | Samoa Citizen |                       |              |              |
|------------------------------------|---------------|-----------------------|--------------|--------------|
|                                    | TOTAL         | Male                  | Female       |              |
| <b>TOTAL</b>                       | <b>12,073</b> | <b>% <sup>2</sup></b> | <b>6,603</b> | <b>5,470</b> |
| Holiday Vacation                   | 1,629         | <b>13</b>             | 800          | 829          |
| Visit Friends/ Relatives           | 3,736         | <b>31</b>             | 1,906        | 1,830        |
| Business/Conference                | 1,229         | <b>10</b>             | 722          | 507          |
| Sporting/Activities                | 457           | <b>4</b>              | 383          | 74           |
| Others                             | 1,007         | <b>8</b>              | 561          | 446          |
| Not Stated                         | 4,015         | <b>33</b>             | 2,231        | 1,784        |
| <b>% Distribution <sup>2</sup></b> | <b>100</b>    |                       | <b>54.7</b>  | <b>45.3</b>  |

**Source:** Ministry of the Prime Minister and Cabinet - Immigration Division,  
Ministry for Revenue - Customs Division and Samoa Bureau of Statistics.

1: Provisional figures

2: Figures are subject to rounding errors



Table 9: Departures by Place of Stay Abroad and Gender (Samoa-citizen-only), First Quarter, 2015 <sup>1</sup>

| Place of Stay Abroad     | TOTAL         | Gender                |              |              |
|--------------------------|---------------|-----------------------|--------------|--------------|
|                          |               |                       | Male         | Female       |
| <b>TOTAL</b>             | <b>12,073</b> | <b>% <sup>2</sup></b> | <b>6,603</b> | <b>5,470</b> |
| American Samoa           | 2,557         | <b>21.2</b>           | 1,480        | 1,077        |
| Fiji                     | 384           | <b>3.2</b>            | 200          | 184          |
| Cook Island              | 1             | <b>0.0</b>            | 0            | 1            |
| Other Pacific Is         | 120           | <b>1.0</b>            | 82           | 38           |
| New Zealand              | 2,601         | <b>21.5</b>           | 1,325        | 1,276        |
| Australia                | 475           | <b>3.9</b>            | 273          | 202          |
| United Kingdom           | 2             | <b>0.0</b>            | 0            | 2            |
| Scandinavia              | 2             | <b>0.0</b>            | 2            | 0            |
| Benelux                  | 1             | <b>0.0</b>            | 0            | 1            |
| Germany                  | 1             | <b>0.0</b>            | 0            | 1            |
| Other Europe             | 9             | <b>0.1</b>            | 5            | 4            |
| United States of America | 229           | <b>1.9</b>            | 114          | 115          |
| Canada                   | 2             | <b>0.0</b>            | 2            | 0            |
| Japan                    | 11            | <b>0.1</b>            | 8            | 3            |
| Other Asia               | 39            | <b>0.3</b>            | 21           | 18           |
| Others                   | 73            | <b>0.6</b>            | 36           | 37           |
| China                    | 42            | <b>0.3</b>            | 20           | 22           |
| Korea                    | 4             | <b>0.0</b>            | 1            | 3            |
| Not Stated               | 5,520         | <b>45.7</b>           | 3,034        | 2,486        |

**Source:** Ministry of the Prime Minister and Cabinet - Immigration Division, Ministry of Revenue - Customs Division and Samoa Bureau of Statistics.

1: Provisional figures

2: Figures are subject to rounding errors

Table 10: Departures by Occupation, Education and Gender , Second Quarter, 2015<sup>1</sup>

| OCCUPATION        | TOTAL         |              |               | Primary       |              |              | Secondary    |               |              | Tertiary     |               |              | Kindy & None |            |            | Not Stated |              |              |              |
|-------------------|---------------|--------------|---------------|---------------|--------------|--------------|--------------|---------------|--------------|--------------|---------------|--------------|--------------|------------|------------|------------|--------------|--------------|--------------|
|                   | TOTAL         | Male         | Female        | Total         | Male         | Female       | Total        | Male          | Female       | Total        | Male          | Female       | Total        | Male       | Female     | Total      | Male         | Female       |              |
| <b>TOTAL</b>      | <b>41,450</b> | <b>100.0</b> | <b>21,701</b> | <b>19,749</b> | <b>5,634</b> | <b>2,937</b> | <b>2,697</b> | <b>11,423</b> | <b>6,123</b> | <b>5,300</b> | <b>15,567</b> | <b>8,084</b> | <b>7,483</b> | <b>522</b> | <b>251</b> | <b>271</b> | <b>8,304</b> | <b>4,306</b> | <b>3,998</b> |
| Armed Forces      | 58            | 0.1          | 45            | 13            | 1            | 1            | 0            | 20            | 15           | 5            | 27            | 21           | 6            | 0          | 0          | 0          | 10           | 8            | 2            |
| Senior Official   | 2,059         | 5.0          | 1,258         | 801           | 132          | 88           | 44           | 347           | 219          | 128          | 1,265         | 770          | 495          | 0          | 0          | 0          | 315          | 181          | 134          |
| Professional      | 6,932         | 16.7         | 3,560         | 3,372         | 307          | 175          | 132          | 1,018         | 528          | 490          | 4,572         | 2,328        | 2,244        | 0          | 0          | 0          | 1,035        | 529          | 506          |
| Technician        | 2,683         | 6.5          | 1,490         | 1,193         | 405          | 183          | 222          | 577           | 331          | 246          | 1,455         | 818          | 637          | 0          | 0          | 0          | 246          | 158          | 88           |
| Clerical          | 578           | 1.4          | 241           | 337           | 54           | 22           | 32           | 154           | 59           | 95           | 288           | 128          | 160          | 0          | 0          | 0          | 82           | 32           | 50           |
| Services workers  | 6,210         | 15.0         | 3,291         | 2,919         | 275          | 150          | 125          | 1,686         | 923          | 763          | 2,827         | 1,465        | 1,362        | 1          | 1          | 0          | 1,421        | 752          | 669          |
| Agricultural work | 959           | 2.3          | 837           | 122           | 137          | 127          | 10           | 398           | 365          | 33           | 229           | 176          | 53           | 0          | 0          | 0          | 195          | 169          | 26           |
| Craft/tradework   | 882           | 2.1          | 808           | 74            | 32           | 32           | 0            | 330           | 307          | 23           | 329           | 295          | 34           | 0          | 0          | 0          | 191          | 174          | 17           |
| Plant/machinery   | 1,486         | 3.6          | 1,252         | 234           | 280          | 234          | 46           | 602           | 515          | 87           | 419           | 348          | 71           | 0          | 0          | 0          | 185          | 155          | 30           |
| Labours           | 2,061         | 5.0          | 653           | 1,408         | 316          | 107          | 209          | 901           | 283          | 618          | 509           | 159          | 350          | 0          | 0          | 0          | 335          | 104          | 231          |
| Students          | 5,469         | 13.2         | 2,536         | 2,933         | 1,925        | 940          | 985          | 1,537         | 765          | 772          | 1,215         | 468          | 747          | 64         | 26         | 38         | 728          | 337          | 391          |
| Infant/retired    | 3,456         | 8.3          | 1,764         | 1,692         | 586          | 274          | 312          | 697           | 350          | 347          | 651           | 354          | 297          | 386        | 190        | 196        | 1,136        | 596          | 540          |
| Unemployed        | 979           | 2.4          | 203           | 776           | 75           | 33           | 42           | 402           | 81           | 321          | 237           | 37           | 200          | 0          | 0          | 0          | 265          | 52           | 213          |
| Not Stated        | 7,638         | 18.4         | 3,763         | 3,875         | 1,109        | 571          | 538          | 2,754         | 1,382        | 1,372        | 1,544         | 717          | 827          | 71         | 34         | 37         | 2,160        | 1,059        | 1,101        |

**Source:** Ministry of the Prime Minister and Cabinet - Immigration Division, Ministry for Revenue - Customs Division and Samoa Bureau of Statistics

1: Provisional figures