

Please address all correspondence
To Government Statistician
In reply, please quote the file reference



File Ref: CPI 06/15

GOVERNMENT OF SAMOA

SAMOA BUREAU OF STATISTICS

CONSUMER PRICE INDEX June 2015

Key findings:

The Consumer Price Index for June 2015 increased by 0.3 percent compared from the previous month.

- The Food and Non Alcoholic Beverages index increased by 2.2 percent.
- Housing, Water, Electricity, Gas and other Fuels index decreased by 9.6 percent.
- Transport index also decreased by 1.8 percent.
- The Average Annual Inflation for the year ended June 2015 was 1.9 percent.

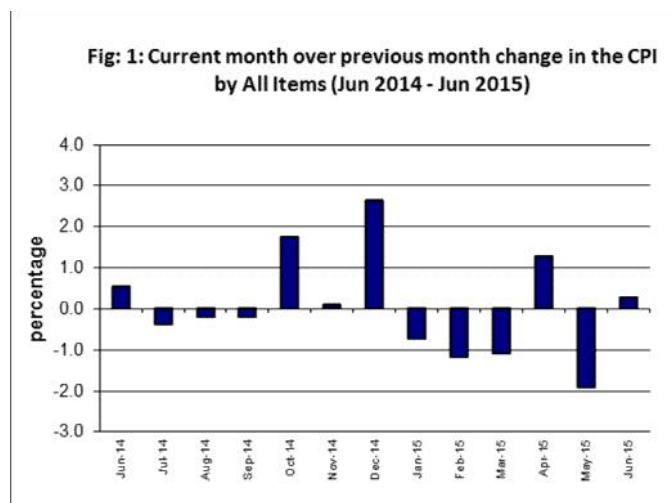
In the year to June 2015, the CPI rose 0.4 percent.

SUMMARY

The Consumer Price Index for June 2015 was 0.3 percent higher than May 2015, and was 0.4 percent higher than June 2014.

The increase of the Local Goods component by 0.9 percent from the previous month was due to higher prices for market staples and beer, which was also the main contributor to the increase of 0.3 percent in the All Items Consumer Price Index.

The Imported Goods Component recorded a decrease of 0.6 percent over May 2015. Figure 1 shows the month to month percentage changes in the Consumer Price Index by all Divisions from June 2014 to June 2015.

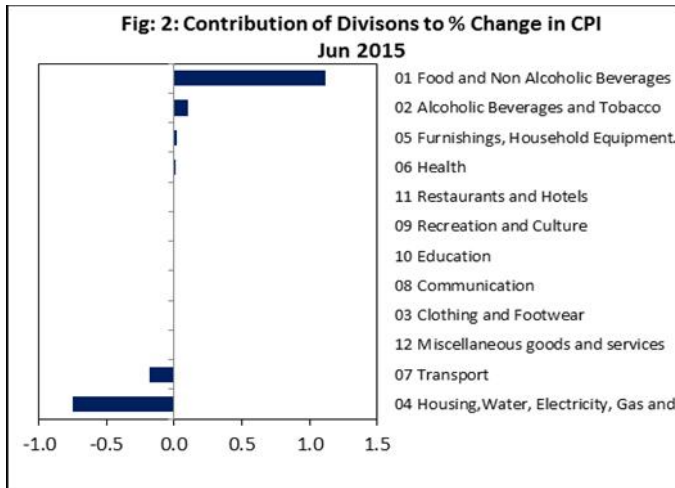


Source : Samoa Bureau of Statistics

Total All Divisions Contribution

Food and Non Alcoholic Beverages divisions along with Alcoholic Beverages and Tobacco were the main contributors to the overall decrease of 0.3 percent in the All Division Consumer Price Index.

On the other hand, there were offsetting negative contributions from Housing, Water, Electricity, Gas and other Fuels division with 0.8 and Transport division with 0.2 percent increases.



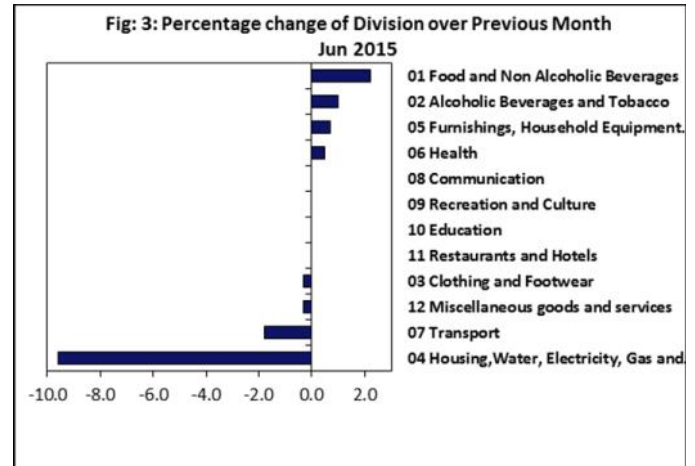
Source : Samoa Bureau of Statistics

Consumer Price Index (% Change)

The increase recorded month on month for the Food and Non Alcoholic Beverages index with 2.2 percent, Alcoholic Beverages and Tobacco index with 1.0 percent, Furnishing, Household Equipment and Maintenance index with 0.7 percent and Health Goods and Services index with 0.5 percent.

On the other hand, decreases were recorded for Housing, Water, Electricity, Gas and other Fuels with 9.6 percent and Transport with 1.8 percent, while Clothing and Footwear and Miscellaneous Goods and Services indices both registered decreases of 0.3 percent.

No changes were recorded for the Communication, Recreation and culture, Education and Restaurants indices. Graphically presented in Fig 3 is the June 2015 percentage change for all divisions from May 2014.



Source : Samoa Bureau of Statistics

Local Goods Component

The Local Goods Component of the Consumer Price Index registered an increase of 0.9 percent when compared to the previous month. This increase was mainly due to higher prices recorded for taro, taamu, fresh fish (string), banana, chinese cabbage, breadfruit, pumpkin and beer.

Imported Goods Component

Decreased prices recorded for chicken leg quarter, sugar and fuel (petrol and diesel) have resulted in the 0.6 percent decrease in the Imported Good Component.

Food and Non Alcoholic Beverages Index

Higher prices recorded for taro, taamu, fresh fish (string), banana, chinese cabbage, breadfruit and pumpkin is reflected in the 2.2 percent increase in the Food and Non Alcoholic Beverages index.



Alcoholic Beverages and Tobacco Index

Increased prices recorded for beer have resulted in the 1.0 percent increase in the Alcoholic Beverages and Tobacco

Furnishings, Household Equipment, and Maintenance Index

The 0.7 percent increase in the Furnishing, Household, Equipment and Maintenance Index was a result of the higher prices recorded for tea towel.

Health Index

Health prices for June 2015 showed an increase of 0.5 percent compared to the month of May. This increase is partly due to the incorporating of a new outlet to replace an inactive outlet.

Housing, Water, Electricity, Gas and other Fuels Index

Lower prices recorded for electricity kwh is resulted in the 9.6 percent decrease in the Housing, Water, Electricity, Gas and other Fuels index.

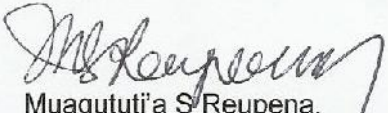
Transport Index

The 1.8 percent decrease in the Transport index was result of the lower prices recorded for fuel (petrol and diesel) and airline fares (Apia-Auckland-Apia).

Underlying Indices ^{1/}

The All Items Underlying Index for June 2015 registered a decrease of 0.3 percent when compared to May 2015, and also a decrease of 3.1

The attached Tables and Graphs provide the user with more detailed analysis.


Muagututi'a S Reupena.
GOVERNMENT STATISTICIAN

Date of release: 9th July 2015

The next Consumer Price Index will be released on 12th August 2015

^{1/}Underlying inflation is measure of inflation that excludes certain items that face volatile price movements. Underlying inflation eliminates products that can have temporary price shocks because these shocks can diverge from the overall trend of inflation and give a false measure of inflation.

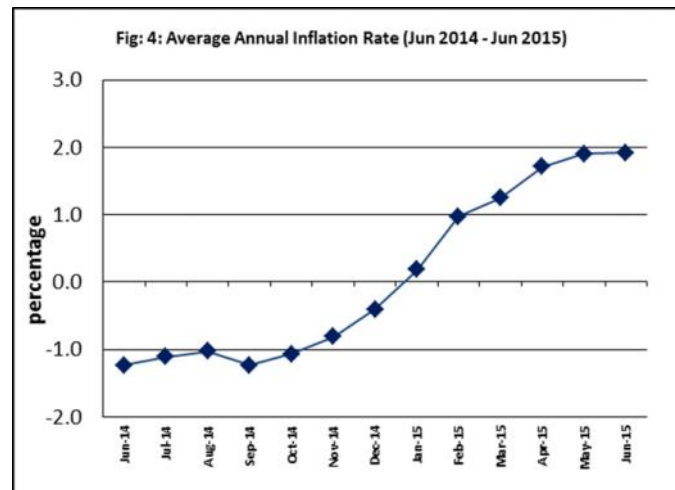
Underlying inflation can also exclude government charges as they change rarely and are not set by an open market and so may also give a false measure of inflation. Prices that are subject to price control or subsidy could also be removed for the same reasons.

Note: The Samoa Bureau of Statistics is introducing methodology improvement to the Consumer Price Index to more accurately reflect prices paid by households when specific products change or are no longer available.

percent when compared to May 2014. The Imported Items Underlying Index registered a decrease of 0.5 percent while the Local Items Underlying Index reported an increase of 0.1 percent.

Inflation Rate

The average annual inflation rate for the year ended June 2015 was 1.9 percent. For the twelve months ending June 2014 the inflation rate was negative 1.2 percent. Presented in Fig 4 is the Average annual inflation rate (June 2014 - June 2015).



Source : Samoa Bureau of Statistics

Table 1. CONSUMER PRICE INDEX.

(Base Period : Average Prices August 2010 = 100)

Group	All Items	Food and Non Alcoholic Beverages	Alcoholic Beverages and Tobacco	Clothing and Footwear	Housing, Water, Electricity, Gas and other Fuels	Furnishings, Household Equipment, and Maintenance	Health	Transport	Communication	Recreation and Culture	Education	Restaurants	Miscellaneous goods and services
Weights	1000	502	97	17	78	31	16	97	58	34	31	15	24
Ave - 2012	107.9	110.3	107.8	113.1	108.9	100.4	96.0	111.2	100.0	98.0	101.6	100.0	100.9
Ave - 2013	108.6	111.1	110.8	113.5	107.2	101.4	96.1	111.8	100.0	98.5	101.6	101.6	100.7
Ave - 2014	108.1	107.3	114.2	117.8	110.8	100.2	108.4	117.2	100.0	99.0	101.6	109.4	98.4
2014													
June	108.0	106.6	114.8	119.3	110.5	99.9	106.9	119.5	100.0	99.0	101.6	109.4	98.2
July	107.6	105.3	114.8	119.3	110.9	99.9	108.1	121.2	100.0	99.0	101.6	109.4	98.5
August	107.4	105.3	114.8	119.2	110.9	99.9	109.2	118.7	100.0	99.0	101.6	109.4	98.5
September	107.2	104.8	114.8	119.2	113.0	100.5	110.6	118.0	100.0	99.0	101.6	109.4	98.5
October	109.1	108.0	114.8	119.2	113.1	100.6	110.5	121.2	100.0	98.9	101.6	109.4	96.4
November	109.2	108.3	114.8	119.2	113.2	100.4	110.5	120.1	100.0	98.9	101.6	109.4	96.3
December	112.1	115.7	114.3	119.2	113.0	100.4	110.6	112.8	100.0	98.9	101.6	109.4	96.3
2015													
January	111.3	112.5	116.6	112.6	113.0	100.6	110.4	119.9	100.0	98.9	103.4	109.4	96.1
February	110.0	112.7	116.6	112.2	112.2	100.2	110.4	106.1	100.0	99.1	103.4	109.4	96.2
March	108.8	111.4	116.6	118.7	107.7	100.2	110.4	100.8	100.0	99.1	103.4	118.7	96.2
April	110.2	112.8	115.0	119.3	108.1	100.3	111.4	109.3	100.0	99.1	103.4	118.7	95.7
May	108.1	107.9	115.1	119.4	108.1	100.2	111.6	113.3	100.0	99.1	103.4	118.7	95.4
June (P)	108.4	110.3	116.2	119.1	97.7	100.9	112.2	111.3	100.0	99.1	103.4	118.7	95.1
Percentage Change (P)													
Jun 2015 over May 2015	0.3	2.2	1.0	-0.3	-9.6	0.7	0.5	-1.8	0.0	0.0	0.0	0.0	-0.3
Jun 2015 over Jun 2014	0.4	3.5	1.2	-0.2	-11.6	1.0	5.0	-6.9	0.0	0.1	1.8	8.5	-3.2
ALL ITEMS UNDERLYING INDEX													
Group	All Items	Food and Non Alcoholic Beverages	Alcoholic Beverages and Tobacco	Clothing and Footwear	Housing, Water, Electricity, Gas and other Fuels	Furnishings, Household Equipment, and Maintenance	Health	Transport	Communication	Recreation and Culture	Education	Restaurants	Miscellaneous goods and services
Weights	480	348	n.a.	17	17	31	14	13	n.a.	2	n.a.	15	24
Ave - 2012	104.3	105.3		113.1	101.7	100.4	95.4	100.1		86.8		100.0	100.9
Ave - 2013	104.7	106.0		113.5	99.4	101.4	95.5	97.4		87.0		101.6	100.7
Ave - 2014	105.9	107.4		117.8	99.6	100.2	94.4	95.7		87.7		109.4	98.4
2014													
June	106.4	108.2		119.3	98.8	99.9	92.7	95.6		88.1		109.4	98.2
July	106.6	108.3		119.3	99.8	99.9	94.0	95.6		88.1		109.4	98.5
August	107.1	109.0		119.2	99.8	99.9	95.3	95.6		88.1		109.4	98.5
September	106.8	108.4		119.2	100.0	100.5	96.9	95.6		88.1		109.4	98.5
October	106.2	107.8		119.2	100.4	100.6	96.8	95.6		87.6		109.4	96.4
November	106.1	107.7		119.2	101.0	100.4	96.8	95.6		87.6		109.4	96.3
December	105.8	107.2		119.2	101.1	100.4	96.9	96.4		87.6		109.4	96.3
2015													
January	105.9	107.7		112.6	101.1	100.6	96.6	96.4		87.6		109.4	96.1
February	106.1	108.0		112.2	99.3	100.2	96.6	96.4		89.5		109.4	96.2
March	105.6	106.7		118.7	98.2	100.2	96.6	96.4		89.5		118.7	96.2
April	105.6	106.6		119.3	99.1	100.3	97.8	97.6		89.5		118.7	95.7
May	103.4	103.5		119.4	99.1	100.2	98.1	97.6		89.5		118.7	95.4
June (P)	103.1	103.1		119.1	99.0	100.9	98.8	94.9		89.5		118.7	95.1
Percentage Change (P)													
Jun 2015 over May 2015	-0.3	-0.4		-0.3	-0.1	0.7	0.7	-2.8		0.0		0.0	-0.3
Jun 2015 over Jun 2014	-3.1	-4.7		-0.1	0.3	1.0	6.6	-0.7		1.7		8.6	-3.2

Source : Samoa Bureau Statistics

(P): Provisional figures

Note: n.a. Not applicable

Table 2. AVERAGE RETAIL PRICES OF SELECTED COMMODITIES

Commodities	Weight	Unit	2014			2015		
			Apr	May	Jun	Apr	May	Jun (P)
Food and Non Alcoholic Beverages								
Chicken Leg Quarters	41.8	lb	1.88	1.86	1.89	2.00	1.63	1.49
Taro	41.2	lb	0.60	0.56	0.62	0.88	0.88	0.93
Rice short grain	26.5	lb	1.55	1.56	1.64	1.51	1.55	1.56
Mutton (Pure Flap)	25.5	lb	8.18	8.38	9.20	9.04	8.22	8.82
Canned fish Natural Oil (b)	25.1	15oz	3.34	3.31	3.31	3.33	3.41	3.43
Bread	22.3	loaf	1.86	1.83	1.83	1.74	1.77	1.77
Canned fish Tomato Sauce (b)	22.1	15oz	2.71	2.75	2.75	2.88	2.91	2.88
Taamu	18.9	lb	1.33	1.32	1.40	1.75	1.56	1.83
Sugar Brown	18.7	lb	1.35	1.34	1.31	1.11	1.12	1.04
Fish (piece)	14.5	lb	7.82	6.86	5.57	7.73	6.63	6.47
Canned Beef (b)	13.7	12oz	13.30	13.20	13.21	12.77	12.63	12.66
Mineral Water	12.4	500mls	1.92	1.92	2.00	2.00	2.00	2.00
Chicken Wings (a)	12.0	lb	3.57	3.61	3.80	3.37	3.41	3.41
Fish (string)	11.7	lb	4.32	3.80	3.74	4.51	3.96	4.40
Koko Samoa	11.5	sml cup	5.00	5.14	5.14	5.00	5.00	4.93
Biscuits Sky Flakes (a)	11.0	850g	14.28	14.15	14.40	14.33	15.03	15.03
Bananas	10.5	lb	0.35	0.35	0.38	0.45	0.40	0.50
Fish (large)	10.2	lb	6.28	7.56	7.71	6.48	6.88	6.67
Milk unskimmed UHT (b)	9.9	ltr	4.19	4.13	4.13	4.17	4.13	4.11
Butter Anchor	9.4	lb	10.85	10.85	10.85	10.98	10.90	10.98
Soft Drink Coke	9.2	750mls	3.59	3.63	3.63	3.54	3.54	3.54
Ramen Maggie	8.8	85g	1.10	1.08	1.08	1.08	1.10	1.08
Flour	6.8	lb	1.10	1.14	1.14	1.07	1.08	1.05
Yam	6.3	lb	1.64	1.69	1.50	1.79	1.98	1.45
Oil Cooking oil (a)	5.8	500mls	6.90	6.65	6.65	5.75	5.75	5.75
Taro Leaves	5.5	lb	2.67	2.77	1.89	2.19	3.40	3.64
Coconuts	5.1	lb	0.33	0.33	0.33	0.27	0.25	0.25
Chinese Cabbage	5.0	lb	1.92	2.10	1.98	2.35	2.05	2.27
Salted Beef	4.9	lb	5.92	5.92	5.92	6.63	6.93	6.78
Eggs	4.3	doz	5.89	5.87	5.90	5.94	5.94	5.94
Stewing beef	4.3	lb	5.58	5.58	5.58	6.14	6.14	6.14
Breadfruit	4.2	lb	0.42	0.35	0.43	0.69	0.53	0.70
Alcoholic Beverages and Tobacco								
Cigarettes (b)	41.70	20rolls	9.43	9.43	9.43	9.86	9.86	9.86
Beer Vailima	32.3	355mls	4.54	4.54	4.54	4.26	4.26	4.54
Spirit Volka nip	6.3	nip	9.33	9.33	10.33	10.00	10.00	9.67
Spirit whisky nip	6.3	nip	9.33	9.33	10.33	10.00	10.00	9.67
Clothing and Footwear								
School Uniform	5.4	each	34.00	34.00	34.00	34.00	34.00	34.00
le Solosolo	2.1	2yds	7.47	7.67	7.67	7.78	7.78	7.55
Jandals soft rubber	2.1	10.5	8.18	8.27	8.18	8.40	8.40	8.43
Jandals hard rubber	1.6	8	3.50	3.25	3.25	3.25	3.25	3.25
Housing, Water, Electricity, Gas and other Fuels								
Electricity	56.9	kwh	1.02	1.05	1.05	1.00	1.00	0.87
Roofing iron	5.2	12ft	52.40	52.80	52.00	55.60	55.60	55.07
Cement	4.4	40kg	22.88	22.88	22.88	23.13	23.13	23.25
Natural gas	3.5	20lb	75.45	75.45	75.45	69.90	69.90	69.90
Kerosene	2.1	ltr	2.93	2.82	2.79	2.22	2.21	2.19
Furnishings, Household Equipment and Routine Household Maintenance								
Washing powder (b)	6.00	200g	1.51	1.49	1.49	1.51	1.50	1.50
Washing soap	4.3	bar	2.90	2.90	2.90	2.97	2.97	2.97
Refridgerator	3.7	331ltrs	2900.00	2900.00	2900.00	2900.00	2900.00	2900.00
Sheeting material	3.3	yd	12.45	13.95	13.95	12.95	12.95	12.95
Seife 3 sheves (a)	2.7	48*48	515.00	515.00	515.00	515.00	515.00	515.00
Kerosene stove 2 burners	2.0	each	144.33	144.33	144.33	141.67	141.67	141.67
Mosquito coil	2.0	box	1.26	1.26	1.26	1.28	1.28	1.28

Commodities	Weight	Unit	2014			2015		
			Apr	May	Jun	Apr	May	Jun (P)
Health								
Paracetamol	3.7	20tablet	1.75	1.75	1.75	1.88	1.88	1.83
Magnesium Trisilicate	3.6	120mls	7.30	7.30	7.30	7.60	7.60	7.60
Cough Mixture	3.6	100mls	9.40	9.40	9.40	9.85	9.95	9.85
Hospital Charge	2.1	per night	10.00	10.00	10.00	10.00	10.00	10.00
Transport								
Petrol	39.1	ltr	3.11	3.03	3.02	2.39	2.51	2.48
Labour charge car repair	9.1	min crg	51.67	51.67	51.67	51.67	51.67	51.67
Air Fares Apia-Auckland-Apia	7.8	return	1723.45	1857.20	1813.20	1826.10	2042.56	1903.60
Air Fares Fagalii-Pago	7.8	return	380.00	380.00	380.00	395.00	395.00	395.00
Bus Fares Apia-Motootua Hosp	3.7	per trip	0.80	1.30	1.30	1.30	1.30	1.30
Bus Fares Apia-Malua	3.7	per trip	2.00	2.60	2.60	2.60	2.60	2.60
Bus Fares Apia-Falefa	3.7	per trip	3.20	3.70	3.70	3.70	3.70	3.70
Car Tyre 205/70R(14)	3.7	size 14	215.00	215.00	215.00	230.00	230.00	212.50
Taxi Fares PO-Motootua Hosp	3.3	per trip	3.50	4.80	4.80	4.80	4.80	4.80
Taxi Fares Po-Malua	3.3	per trip	26.10	31.30	31.30	31.30	31.30	31.30
Taxi Fares PO-Falefa	3.3	per trip	36.00	43.20	43.20	43.20	43.20	43.20
Diesel	2.8	ltr	3.17	3.07	3.06	2.40	2.46	2.42
Car Registration 1500-2000 cc	2.0	ann rate	290.00	290.00	290.00	352.00	352.00	352.00
Boat Fares Mulifanua-Salelologa	1.3	one way	12.00	12.00	12.00	12.00	12.00	12.00
Communication								
Telephone local call	23.6	1 min	0.06	0.06	0.06	0.06	0.06	0.06
Telephone NZ call	10.6	3 mins	2.55	2.55	2.55	2.55	2.55	2.55
Telephone USA call	10.6	3 mins	5.35	5.35	5.35	5.35	5.35	5.35
Telephone Rental	10.6	monthly	24.15	24.15	24.15	24.15	24.15	24.15
Internet Prepaid Rates (a)	2.6	30 mins	5.10	5.10	5.10	5.10	5.10	5.10
PO Box rental (small box)	0.2	ann rate	80.00	80.00	80.00	80.00	80.00	80.00
Recreation and Culture								
National Lotto (a)	23.6	ticket	7.00	7.00	7.00	7.00	7.00	7.00
Tattslotto	3.8	ticket	13.50	13.50	13.50	13.50	13.50	13.50
News Paper Samoa Observer	2.7	each	2.50	2.50	2.50	2.50	2.50	2.50
Education								
School Fees Primary	10.5	Yr 4	10.00	10.00	10.00	10.00	10.00	10.00
School Fees Secondary	8.1	Yr 10	50.00	50.00	50.00	50.00	50.00	50.00
School Fees Primary	7.6	Yr 8	20.00	20.00	20.00	20.00	20.00	20.00
School Fees (NUS registration)	5.1	tertiary	265.00	265.00	265.00	292.00	292.00	292.00
Restaurants								
Meal (Fish & Chips)	11.0	1 serve	9.00	9.00	9.00	10.00	10.00	10.00
Meal (Pinati)	3.7	1 serve	3.00	3.00	3.00	3.00	3.00	3.00
Miscellaneous goods and services								
Toilet soap	7.6	90g	1.07	1.09	1.07	1.04	1.03	1.01
Diapers (16kg & over)	7.2	24pkt	37.73	37.73	37.73	37.75	37.90	37.82
Toilet Paper	3.6	roll	0.90	0.90	0.90	0.88	0.88	0.88

Source : Samoa Bureau Statistics

(a) : New commodity from August 2010

(b) : Average price across all brands

(P) : Provisional figures

Table 3. IMPORTED GOODS COMPONENT OF THE CONSUMER PRICE INDEX
(Base Period : Average Prices August 2010 = 100)

Group	All Items	Food and Non Alcoholic Beverages	Alcoholic Beverages and Tobacco	Clothing and Footwear	Housing,Water, Electricity, Gas and other Fuels	Furnishings, Household Equipment and Maintenance	Health	Transport	Communication	Recreation and Culture	Education	Restaurants	Miscellaneous goods and services
Weights	424.8	272.0	17.1	10.9	17.5	22.7	12.8	46.8	n.a.	1.3	n.a.	n.a.	23.7
Ave - 2012	106.7	105.7	113.9	110.6	103.8	102.1	95.1	118.6		76.7			100.9
Ave - 2013	106.9	106.2	112.1	110.9	101.7	103.0	95.2	119.7		77.0			100.7
Ave - 2014	108.2	108.2	113.4	110.0	101.7	102.3	94.0	120.8		78.2			98.4
2014													
June	108.3	108.9	115.2	109.8	100.3	102.0	92.1	118.4		78.9			98.2
July	109.0	109.2	115.2	109.8	101.8	101.9	93.6	121.9		78.9			98.5
August	109.6	110.0	115.2	109.6	101.8	101.9	95.0	122.8		78.9			98.5
September	109.4	109.3	115.2	109.6	102.1	102.8	96.7	124.1		78.9			98.5
October	109.0	108.9	115.2	109.7	102.6	102.8	96.6	122.9		78.1			96.4
November	108.4	108.6	115.2	109.6	102.7	102.5	96.6	119.7		78.1			96.3
December	107.3	108.1	112.2	109.6	102.0	102.5	96.7	114.2		78.1			96.3
2015													
January	107.3	108.8	112.2	109.5	101.9	102.7	96.4	110.1		78.1			96.1
February	105.8	108.9	112.2	108.8	98.3	102.2	96.4	97.4		81.5			96.2
March	103.6	107.2	112.2	108.9	95.9	102.2	96.4	88.1		81.5			96.2
April	104.5	107.0	112.2	109.8	97.7	102.1	97.7	96.5		81.5			95.7
May	102.2	102.8	112.2	109.9	97.7	102.0	98.0	100.6		81.5			95.4
June (P)	101.6	102.3	109.7	109.1	97.5	103.0	97.0	98.8		81.5			95.1
Percentage Change (P)													
Jun 2015 over May 2015	-0.6	-0.5	-2.2	-0.7	-0.2	0.9	-1.0	-1.8		0.0			-0.3
Jun 2015 over Jun 2014	-6.2	-6.0	-4.8	-0.6	-2.9	1.0	5.2	-16.6		3.3			-3.2
IMPORTED ITEMS UNDERLYING INDEX													
Group	All Items	Food and Non Alcoholic Beverages	Alcoholic Beverages and Tobacco	Clothing and Footwear	Housing,Water, Electricity, Gas and other Fuels	Furnishings, Household Equipment and Maintenance	Health	Transport	Communication	Recreation and Culture	Education	Restaurants	Miscellaneous goods and services
Weights	362.8	272.0	n.a.	10.9	15.4	22.7	12.8	4.0	n.a.	1.3	n.a.	n.a.	23.7
Ave - 2012	104.9	105.7		110.6	101.4	102.1	95.1	122.0		76.7			100.9
Ave - 2013	105.0	106.2		110.9	98.9	103.0	95.2	113.2		77.0			100.7
Ave - 2014	106.2	108.2		110.0	98.7	102.3	94.0	107.4		78.2			98.4
2014													
June	106.6	108.9		109.8	97.8	102.0	92.1	107.2		78.9			98.2
July	106.9	109.2		109.8	98.9	101.9	93.6	107.2		78.9			98.5
August	107.6	110.0		109.6	98.9	101.9	95.0	107.2		78.9			98.5
September	107.2	109.3		109.6	99.1	102.8	96.7	107.1		78.9			98.5
October	106.8	108.9		109.7	99.6	102.8	96.6	107.2		78.1			96.4
November	106.6	108.6		109.6	100.2	102.5	96.6	107.1		78.1			96.3
December	106.2	108.1		109.6	100.3	102.5	96.7	109.6		78.1			96.3
2015													
January	106.7	108.8		109.5	100.3	102.7	96.4	109.6		78.1			96.1
February	106.7	108.9		108.8	98.3	102.2	96.4	109.6		81.5			96.2
March	105.4	107.2		108.9	97.2	102.2	96.4	109.6		81.5			96.2
April	105.3	107.0		109.8	98.1	102.1	97.7	113.9		81.5			95.7
May	102.2	102.8		109.9	98.1	102.0	98.0	113.9		81.5			95.4
June (P)	101.7	102.3		109.1	98.0	103.0	97.0	104.9		81.5			95.1
Percentage Change (P)													
Jun 2015 over May 2015	-0.5	-0.5		-0.7	-0.1	0.9	-1.0	-7.9		0.0			-0.3
Jun 2015 over Jun 2014	-4.6	-6.0		-0.6	0.2	1.0	5.2	-2.1		3.3			-3.2

Source : Samoa Bureau Statistics

(P): Provisional figures

Note: n.a. Not applicable

Table 4. LOCAL GOODS COMPONENT OF THE CONSUMER PRICE INDEX
(Base Period : Average Prices August 2010 = 100)

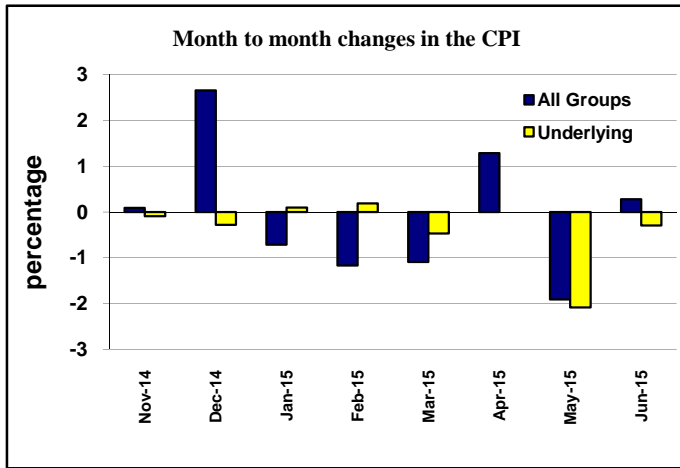
Group	All Items	Food and Non Alcoholic Beverages	Alcoholic Beverages and Tobacco	Clothing and Footwear	Housing, Water, Electricity, Gas and other Fuels	Furnishings, Household Equipment and Maintenance	Health	Transport	Communication	Recreation and Culture	Education	Restaurants	Miscellaneous goods and services
Weights	575.2	229.8	79.6	6.4	60.6	8.6	3.0	50.3	58.2	32.7	31.3	14.7	n.a.
Ave - 2012	108.8	115.8	106.5	117.3	110.3	95.9	100.0	104.2	100.0	98.8	101.6	100.0	
Ave - 2013	109.8	116.9	110.5	117.9	108.8	97.1	100.0	104.4	100.0	99.4	101.6	101.6	
Ave - 2014	108.1	106.4	114.4	131.1	113.4	94.6	170.0	113.9	100.0	99.8	101.6	109.4	
2014													
June	107.8	104.0	114.7	135.5	113.5	94.5	170.0	120.5	100.0	99.8	101.6	109.4	
July	106.6	100.8	114.7	135.5	113.5	94.5	170.0	120.7	100.0	99.8	101.6	109.4	
August	105.7	99.8	114.7	135.5	113.5	94.5	170.0	114.9	100.0	99.8	101.6	109.4	
September	105.7	99.6	114.7	135.5	116.2	94.5	170.0	112.3	100.0	99.8	101.6	109.4	
October	109.2	106.9	114.7	135.5	116.2	95.0	170.0	119.7	100.0	99.8	101.6	109.4	
November	109.7	107.8	114.7	135.5	116.2	95.0	170.0	120.4	100.0	99.8	101.6	109.4	
December	115.6	124.6	114.7	135.5	116.2	95.0	170.0	111.5	100.0	99.8	101.6	109.4	
2015													
January	114.4	117.0	117.5	117.9	116.2	95.0	170.0	129.0	100.0	99.8	103.4	109.4	
February	113.1	117.2	117.5	117.9	116.2	95.0	170.0	114.2	100.0	99.8	103.4	109.4	
March	112.6	116.4	117.5	135.5	111.1	95.0	170.0	112.5	100.0	99.8	103.4	118.7	
April	114.4	119.7	115.6	135.5	111.1	95.5	170.0	121.3	100.0	99.8	103.4	118.7	
May	112.5	114.0	115.7	135.5	111.1	95.5	170.0	125.1	100.0	99.8	103.4	118.7	
June (P)	113.5	119.7	117.6	136.2	97.8	95.5	177.5	123.0	100.0	99.8	103.4	118.7	
Percentage Change (P)													
Jun 2015 over May 2015	0.9	5.0	1.7	0.5	-11.9	0.0	4.4	-1.7	0.0	0.0	0.0	0.0	
Jun 2015 over Jun 2014	5.2	15.1	2.5	0.5	-13.8	1.0	4.4	2.1	0.0	0.0	1.8	8.6	
LOCAL ITEMS UNDERLYING INDEX													
Group	All Items	Food and Non Alcoholic Beverages	Alcoholic Beverages and Tobacco	Clothing and Footwear	Housing, Water, Electricity, Gas and other Fuels	Furnishings, Household Equipment and Maintenance	Health	Transport	Communication	Recreation and Culture	Education	Restaurants	Miscellaneous goods and services
Weights	117.4	75.5	n.a.	6.4	1.2	8.6	0.9	9.1	n.a.	1.0	n.a.	14.7	n.a.
Ave - 2012	102.5	103.9		117.3	105.2	95.9	100.0	90.5		100.0		100.0	
Ave - 2013	103.8	105.5		117.9	105.9	97.1	100.0	90.5		100.0		101.6	
Ave - 2014	105.0	104.8		131.1	111.5	94.6	100.0	90.5		100.0		109.4	
2014													
June	105.7	105.7		135.5	111.6	94.5	100.0	90.5		100.0		109.4	
July	105.5	105.5		135.5	111.6	94.5	100.0	90.5		100.0		109.4	
August	105.7	105.7		135.5	111.6	94.5	100.0	90.5		100.0		109.4	
September	105.6	105.6		135.5	111.6	94.5	100.0	90.5		100.0		109.4	
October	104.5	104.5		135.5	111.6	95.0	100.0	90.5		100.0		109.4	
November	104.8	104.8		135.5	111.5	95.0	100.0	90.5		100.0		109.4	
December	104.7	104.7		135.5	111.5	95.0	100.0	90.5		100.0		109.4	
2015													
January	103.5	103.5		117.9	111.5	95.0	100.0	90.5		100.0		109.4	
February	104.2	104.2		117.9	111.5	95.0	100.0	90.5		100.0		109.4	
March	106.5	106.5		135.5	111.5	95.0	100.0	90.5		100.0		118.7	
April	106.8	106.8		135.5	111.5	95.5	100.0	90.5		100.0		118.7	
May	107.3	107.3		135.5	111.5	95.5	100.0	90.5		100.0		118.7	
June (P)	107.4	107.4		136.2	112.3	95.5	125.0	90.5		100.0		118.7	
Percentage Change (P)													
Jun 2015 over May 2015	0.1	0.1		0.5	0.7	0.0	25.0	0.0		0.0		0.0	
Jun 2015 over Jun 2014	1.6	1.6		0.5	0.6	1.1	25.0	0.0		0.0		8.5	

Source : Samoa Bureau Statistics

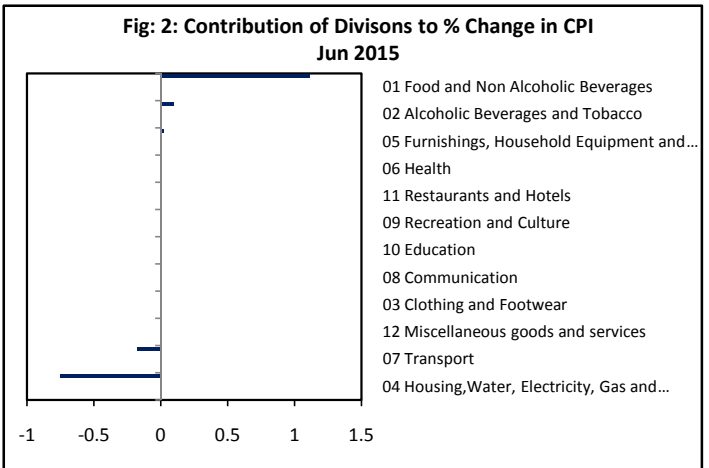
(P): Provisional figures

Note: n.a. Not applicable

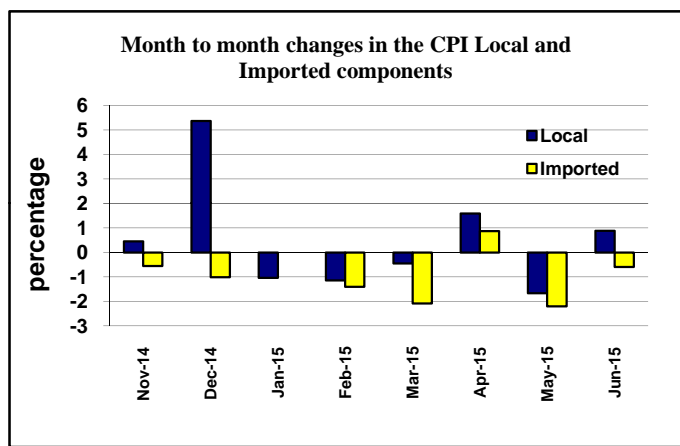
Graph.1



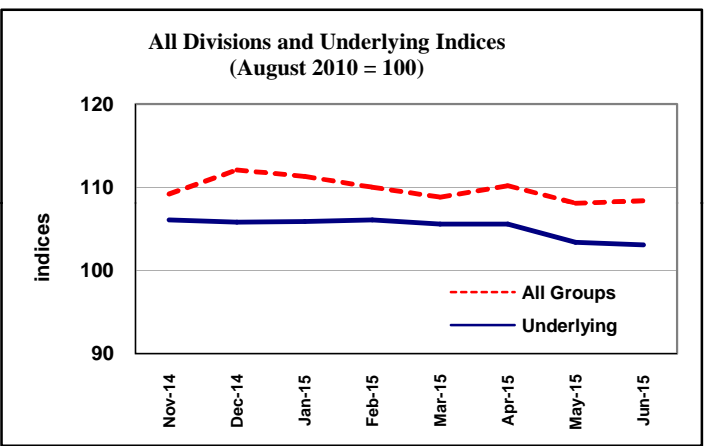
Graph.2



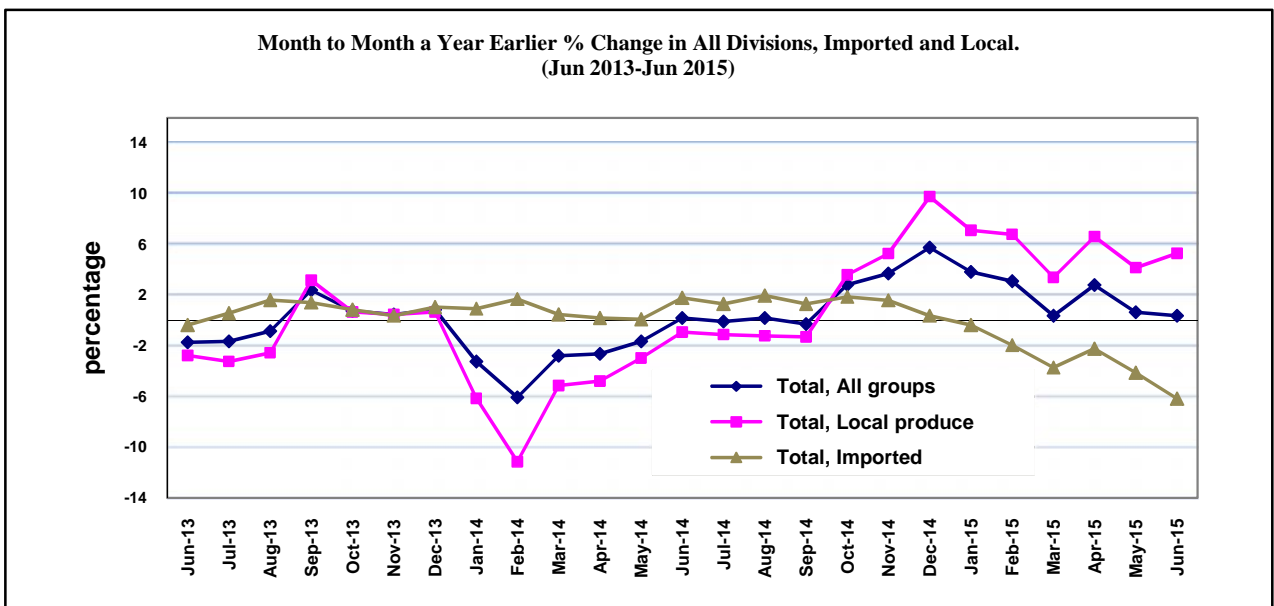
Graph.3



Graph.4



Graph 5



Source: Samoa Bureau of Statistics