

Please address all correspondence
To Government Statistician
In reply, please quote the file reference



GOVERNMENT OF SAMOA

File Ref: CPI 04/15

SAMOA BUREAU OF STATISTICS

CONSUMER PRICE INDEX

April 2015

Key findings:

The Consumer Price Index for April 2015 increased by 1.3 percent compared to the previous month.

- Increase in the global price of oil has pushed local prices up for fuel reflected in the 8.4 percent increase in the Transport index and contributed the most to the increase of the All Item Index.
- The Food and Non Alcoholic Beverages index also increased by 1.3 percent.
- Alcoholic Beverages and Tobacco index decreased by 1.4 percent.
- The Average Annual Inflation for the year ended April 2015 was 1.7 percent

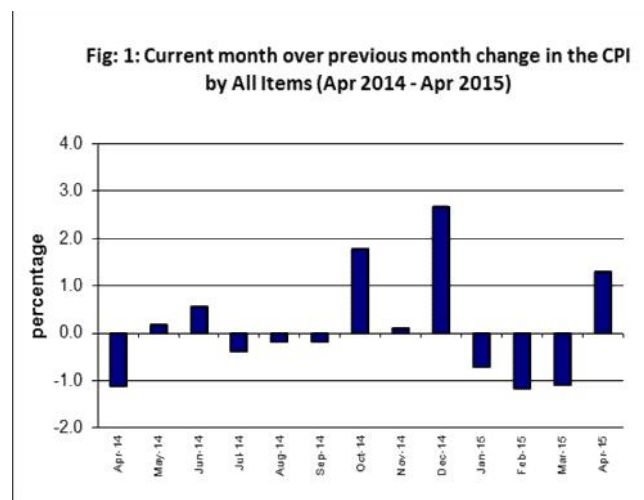
In the year to April 2015 the CPI rose 2.8 percent.

SUMMARY

The Consumer Price Index for April 2015 was 1.3 percent higher than March 2015, and was 2.8 percent higher than April 2014.

The increase of the Local Goods Component by 1.6 percent reflects higher prices for market staples, fresh fish and airline fare, which also contributed to the increase of 1.3 percent in the All Items Consumer Price Index.

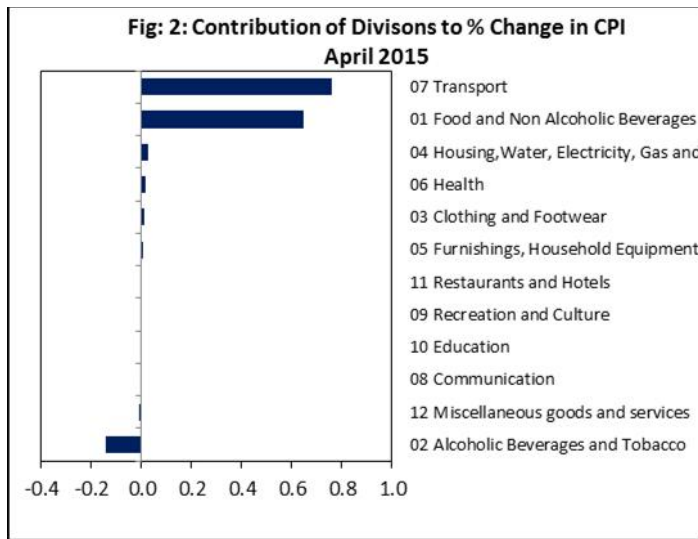
The Imported Goods Component also recorded an increase of 0.8 percent from March 2015. Figure 1 shows the month to month percentage changes in the Consumer Price Index by All Divisions from April 2014 to April 2015.



Source : Samoa Bureau of Statistics

Total All Divisions Contribution

Transport division along with Food and Non Alcoholic Beverages were the main contributors to the overall increase of 1.3 percent in the All Division Consumer Price Index.



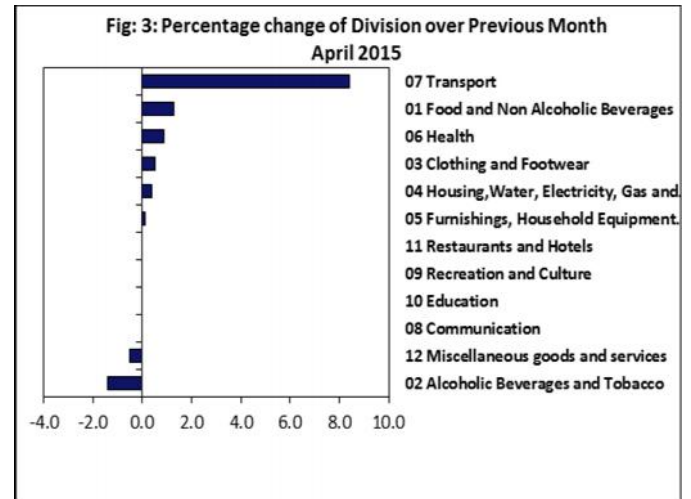
Source : Samoa Bureau of Statistics

Consumer Price Index (% Change)

The increase recorded month on month for the Transport index with 8.4 percent, Food and Non Alcoholic Beverages index with 1.3 percent, Health index with 0.9 percent, Clothing and Footwear index with 0.5 percent, Housing, Water, Electricity, Gas and other Fuels index with 0.4 percent and Furnishing, Household Equipment and Maintenance index with 0.1 percent.

On the other hand, Alcoholic Beverages and Tobacco index recorded a decrease of 1.4 percent. Miscellaneous Goods and Services also decrease of 0.5 percent.

No changes were recorded for the Communication, Recreation and culture, Education and Restaurants indices. Graphically presented in Fig 3 is the April 2015 percentage change for all divisions from March 2015.



Source : Samoa Bureau of Statistics

Local Goods Component

The Local Goods Component of the Consumer Price Index registered an increase of 1.6 percent when compared to the previous month. This decrease was mainly due to higher prices recorded for taamu, fresh fish (piece and string), banana, breadfruit and airline fare.

Imported Goods Component

Increased prices recorded for fuel (petrol and diesel) has resulted in the 0.8 percent increase in the Imported Good Component.

Transport Index

Higher price recorded for fuel (petrol and diesel) and airline fare (Apia-Auckland-Apia) is reflected in the 8.4 percent increase in the Transport index.

Food and Non Alcoholic Beverages Index

The 1.3 percent increase in the Food and Non Alcoholic Beverages index was mainly due to higher prices recorded for mutton flaps, taamu, fresh fish (piece and string), banana, breadfruit



Health Index

The 0.9 percent increase in the Health index was mainly due to higher prices recorded for cough mixture.

Clothing and Footwear Index

Increased prices recorded for jandals have resulted in the 0.5 percent increase in the Clothing and Footwear index.

Housing, Water, Electricity, Gas and other Fuels Index

An increase of 0.4 percent in the Housing, Water, Electricity, Gas and other Fuels index is resulted in the higher prices recorded for roofing iron and kerosene.

Alcoholic Beverages and Tobacco Index

Lower prices recorded for beer is resulted in the 1.4 percent decrease in the Alcoholic Beverages and Tobacco index.

Miscellaneous Goods and Services Index

The lower prices recorded for toilet paper is reflected in the 0.5 percent decrease in the Miscellaneous Good and Services index.

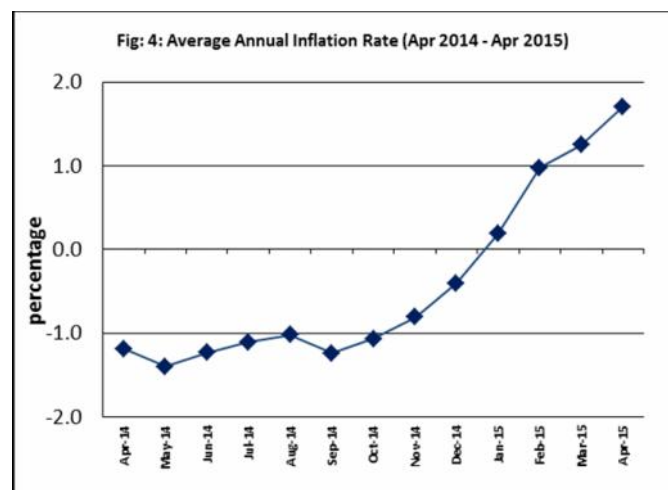
Underlying Indices ^{1/}

The All Items Underlying Index for April 2015 registered no change when compared to March 2015, and an increase of 0.6 percent when

compared to April last year. The Local Items Underlying Index registered an increase of 0.3 percent, while Imported Items Underlying Index recorded a decrease of 0.1 percent.

Inflation Rate

The average annual inflation rate for the year ended April 2015 was 1.7 percent. For the twelve months ending April 2014 the inflation rate was negative 1.2 percent. Presented in Fig 4 is the Average annual inflation rate (April 2014 - April 2015).



Source : Samoa Bureau of Statistics

The attached Tables and Graphs provide the user with more detailed analysis.

Muagututia S Reupena.

GOVERNMENT STATISTICIAN

Date of release: 12th May 2015.

The next Consumer Price Index will be released on 11th June 2015.

^{1/}Underlying inflation is measure of inflation that excludes certain items that face volatile price movements. Underlying inflation eliminates products that can have temporary price shocks because these shocks can diverge from the overall trend of inflation and give a false measure of inflation.

Underlying inflation can also exclude government charges as they change rarely and are not set by an open market and so may also give a false measure of inflation. Prices that are subject to price control or subsidy could also be removed for the same reasons.

Table 1. CONSUMER PRICE INDEX.

(Base Period : Average Prices August 2010 = 100)

Group	All Items	Food and Non Alcoholic Beverages	Alcoholic Beverages and Tobacco	Clothing and Footwear	Housing, Water, Electricity, Gas and other Fuels	Furnishings, Household Equipment, and Maintenance	Health	Transport	Communication	Recreation and Culture	Education	Restaurants	Miscellaneous goods and services
Weights	1000	502	97	17	78	31	16	97	58	34	31	15	24
Ave - 2012	107.9	110.3	107.8	113.1	108.9	100.4	96.0	111.2	100.0	98.0	101.6	100.0	100.9
Ave - 2013	108.6	111.1	110.8	113.5	107.2	101.4	96.1	111.8	100.0	98.5	101.6	101.6	100.7
Ave - 2014	108.1	107.3	114.2	117.8	110.8	100.2	108.4	117.2	100.0	99.0	101.6	109.4	98.4
2014													
April	107.2	106.7	113.2	120.1	108.4	99.1	106.9	113.7	100.0	99.0	101.6	109.4	98.5
May	107.4	105.6	113.2	119.5	110.7	99.9	106.9	119.9	100.0	99.0	101.6	109.4	99.0
June	108.0	106.6	114.8	119.3	110.5	99.9	106.9	119.5	100.0	99.0	101.6	109.4	98.2
July	107.6	105.3	114.8	119.3	110.9	99.9	108.1	121.2	100.0	99.0	101.6	109.4	98.5
August	107.4	105.3	114.8	119.2	110.9	99.9	109.2	118.7	100.0	99.0	101.6	109.4	98.5
September	107.2	104.8	114.8	119.2	113.0	100.5	110.6	118.0	100.0	99.0	101.6	109.4	98.5
October	109.1	108.0	114.8	119.2	113.1	100.6	110.5	121.2	100.0	98.9	101.6	109.4	96.4
November	109.2	108.3	114.8	119.2	113.2	100.4	110.5	120.1	100.0	98.9	101.6	109.4	96.3
December	112.1	115.7	114.3	119.2	113.0	100.4	110.6	112.8	100.0	98.9	101.6	109.4	96.3
2015													
January	111.3	112.5	116.6	112.6	113.0	100.6	110.4	119.9	100.0	98.9	103.4	109.4	96.1
February	110.0	112.7	116.6	112.2	112.2	100.2	110.4	106.1	100.0	99.1	103.4	109.4	96.2
March	108.8	111.4	116.6	118.7	107.7	100.2	110.4	100.8	100.0	99.1	103.4	118.7	96.2
April (P)	110.2	112.8	115.0	119.3	108.1	100.3	111.4	109.3	100.0	99.1	103.4	118.7	95.7
Percentage Change (P)													
Apr 2015 over	1.3	1.3	-1.4	0.5	0.4	0.1	0.9	8.4	0.0	0.0	0.0	0.0	-0.5
Feb 2015													
Apr 2015 over	2.8	5.7	1.6	-0.7	-0.3	1.2	4.2	-3.9	0.0	0.1	1.8	8.5	-2.8
Apr 2014													

ALL ITEMS UNDERLYING INDEX

Group	All Items	Food and Non Alcoholic Beverages	Alcoholic Beverages and Tobacco	Clothing and Footwear	Housing, Water, Electricity, Gas and other Fuels	Furnishings, Household Equipment, and Maintenance	Health	Transport	Communication	Recreation and Culture	Education	Restaurants	Miscellaneous goods and services
Weights	480	348	n.a.	17	17	31	14	13	n.a.	2	n.a.	15	24
Ave - 2012	104.3	105.3		113.1	101.7	100.4	95.4	100.1		86.8		100.0	100.9
Ave - 2013	104.7	106.0		113.5	99.4	101.4	95.5	97.4		87.0		101.6	100.7
Ave - 2014	105.9	107.4		117.8	99.6	100.2	94.4	95.7		87.7		109.4	98.4
2014													
April	105.0	106.3		120.1	98.9	99.1	92.7	95.6		88.1		109.4	98.5
May	105.0	106.2		119.5	99.1	99.9	92.7	95.6		88.1		109.4	99.0
June	106.4	108.2		119.3	98.8	99.9	92.7	95.6		88.1		109.4	98.2
July	106.6	108.3		119.3	99.8	99.9	94.0	95.6		88.1		109.4	98.5
August	107.1	109.0		119.2	99.8	99.9	95.3	95.6		88.1		109.4	98.5
September	106.8	108.4		119.2	100.0	100.5	96.9	95.6		88.1		109.4	98.5
October	106.2	107.8		119.2	100.4	100.6	96.8	95.6		87.6		109.4	96.4
November	106.1	107.7		119.2	101.0	100.4	96.8	95.6		87.6		109.4	96.3
December	105.8	107.2		119.2	101.1	100.4	96.9	96.4		87.6		109.4	96.3
2015													
January	105.9	107.7		112.6	101.1	100.6	96.6	96.4		87.6		109.4	96.1
February	106.1	108.0		112.2	99.3	100.2	96.6	96.4		89.5		109.4	96.2
March	105.6	106.7		118.7	98.2	100.2	96.6	96.4		89.5		118.7	96.2
April (P)	105.6	106.6		119.3	99.1	100.3	97.8	97.6		89.5		118.7	95.7
Percentage Change (P)													
Apr 2015 over	0.0	-0.1		0.5	0.9	0.1	1.2	1.2		0.0		0.0	-0.5
Mar 2015													
Apr 2015 over	0.6	0.3		-0.7	0.1	1.2	5.6	2.2		1.7		8.6	-2.9
Apr 2014													

Source : Samoa Bureau Statistics

(P): Provisional figures

Note: n.a. Not applicable

Table 2. AVERAGE RETAIL PRICES OF SELECTED COMMODITIES

Commodities	Weight	Unit	2014			2015		
			Feb	Mar	Apr	Feb	Mar	Apr (P)
<i>Food and Non Alcoholic Beverages</i>								
Chicken Leg Quarters	41.8	lb	1.89	1.91	1.88	2.03	2.06	2.00
Taro	41.2	lb	0.57	0.63	0.60	0.93	0.97	0.88
Rice short grain	26.5	lb	1.55	1.55	1.55	1.47	1.54	1.51
Mutton (Pure Flap)	25.5	lb	8.29	8.36	8.18	9.14	8.70	9.04
Canned fish Natural Oil (b)	25.1	15oz	3.35	3.33	3.34	3.32	3.30	3.33
Bread	22.3	loaf	1.91	1.89	1.86	1.74	1.74	1.74
Canned fish Tomato Sauce (b)	22.1	15oz	2.74	2.74	2.71	2.96	2.88	2.88
Taamu	18.9	lb	1.06	1.10	1.33	1.73	1.67	1.75
Sugar Brown	18.7	lb	1.32	1.31	1.35	1.26	1.11	1.11
Fish (piece)	14.5	lb	7.14	8.85	7.82	8.00	7.44	7.73
Canned Beef (b)	13.7	12oz	13.28	13.27	13.30	12.86	12.82	12.77
Mineral Water	12.4	500mls	1.85	1.87	1.92	2.00	2.00	2.00
Chicken Wings (a)	12.0	lb	3.53	3.48	3.57	3.43	3.35	3.37
Fish (string)	11.7	lb	3.96	4.25	4.32	5.22	4.15	4.51
Koko Samoa	11.5	sml cup	5.00	5.00	5.00	5.14	5.14	5.00
Biscuits Sky Flakes (a)	11.0	850g	14.15	14.15	14.28	14.33	14.33	14.33
Bananas	10.5	lb	0.30	0.33	0.35	0.37	0.36	0.45
Fish (large)	10.2	lb	5.88	6.39	6.28	6.21	7.05	6.48
Milk unskimmed UHT (b)	9.9	ltr	4.09	4.13	4.19	4.11	4.13	4.17
Butter Anchor	9.4	lb	10.80	10.85	10.85	10.98	11.00	10.98
Soft Drink Coke	9.2	750mls	3.54	3.50	3.59	3.59	3.59	3.54
Ramen Maggie	8.8	85g	1.08	1.08	1.10	1.08	1.08	1.08
Flour	6.8	lb	1.17	1.17	1.10	1.05	1.05	1.07
Yam	6.3	lb	1.29	1.82	1.64	1.76	1.79	1.79
Oil Cooking oil (a)	5.8	500mls	6.65	6.90	6.90	6.60	6.60	5.75
Taro Leaves	5.5	lb	3.33	3.37	2.67	2.86	2.70	2.19
Coconuts	5.1	lb	0.32	0.31	0.33	0.26	0.26	0.27
Chinese Cabbage	5.0	lb	3.04	2.76	1.92	3.08	2.23	2.35
Salted Beef	4.9	lb	5.93	5.92	5.92	6.61	6.61	6.63
Eggs	4.3	doz	6.10	6.04	5.89	5.59	5.59	5.94
Stewing beef	4.3	lb	5.58	5.58	5.58	6.14	6.14	6.14
Breadfruit	4.2	lb	0.36	0.71	0.42	0.23	0.38	0.69
<i>Alcoholic Beverages and Tobacco</i>								
Cigarettes (b)	41.70	20rolls	9.36	9.43	9.43	9.86	9.86	9.86
Beer Vailima	32.3	355mls	4.53	4.53	4.54	4.54	4.54	4.26
Spirit Volka nip	6.3	nip	10.33	10.33	9.33	10.00	10.00	10.00
Spirit whisky nip	6.3	nip	10.33	10.33	9.33	10.00	10.00	10.00
<i>Clothing and Footwear</i>								
School Uniform	5.4	each	29.00	29.00	34.00	29.00	34.00	34.00
Ie Solosolo	2.1	2yds	7.55	7.47	7.47	7.78	7.78	7.78
Jandals soft rubber	2.1	10.5	8.18	8.18	8.18	8.18	8.23	8.40
Jandals hard rubber	1.6	8	3.50	3.50	3.50	3.25	3.25	3.25
<i>Housing, Water, Electricity, Gas and other Fuels</i>								
Electricity	56.9	kwh	1.02	1.02	1.02	1.05	1.00	1.00
Roofing iron	5.2	12ft	52.40	52.40	52.40	53.60	53.60	55.60
Cement	4.4	40kg	22.88	22.88	22.88	23.00	23.13	23.13
Natural gas	3.5	20lb	75.45	75.45	75.45	70.80	69.90	69.90
Kerosene	2.1	ltr	3.09	2.94	2.93	2.30	2.03	2.22
<i>Furnishings, Household Equipment and Routine Household Maintenance</i>								
Washing powder (b)	6.00	200g	1.70	1.70	1.51	1.51	1.51	1.51
Washing soap	4.3	bar	2.90	2.90	2.90	2.93	2.93	2.97
Refridgerator	3.7	331ltrs	2900.00	2900.00	2900.00	2900.00	2900.00	2900.00
Sheeting material	3.3	yd	12.95	12.95	12.45	12.95	12.95	12.95
Sefe 3 sheves (a)	2.7	48*48	515.00	515.00	515.00	515.00	515.00	515.00
Kerosene stove 2 burners	2.0	each	144.33	144.33	144.33	141.67	141.67	141.67
Mosquito coil	2.0	box	1.26	1.26	1.26	1.28	1.28	1.28

Commodities	Weight	Unit	2014			2015		
			Feb	Mar	Apr	Feb	Mar	Apr (P)
Health								
Paracetamol	3.7	20tablet	1.75	1.75	1.75	1.88	1.88	1.88
Magnesium Trisillicate	3.6	120mls	7.30	7.30	7.30	7.60	7.60	7.60
Cough Mixture	3.6	100mls	9.40	9.40	9.40	9.40	9.40	9.85
Hospital Charge	2.1	per night	10.00	10.00	10.00	10.00	10.00	10.00
Transport								
Petrol	39.1	ltr	3.18	3.10	3.11	2.42	2.16	2.39
Labour charge car repair	9.1	min crg	51.67	51.67	51.67	51.67	51.67	51.67
Air Fares Apia-Auckland-Apia	7.8	return	1917.45	1453.25	1723.45	1268.20	1115.95	1826.10
Air Fares Fagalii-Pago	7.8	return	380.00	380.00	380.00	395.00	395.00	395.00
Bus Fares Apia-Motootua Hosp	3.7	per trip	0.80	0.80	0.80	1.30	1.30	1.30
Bus Fares Apia-Malua	3.7	per trip	2.00	2.00	2.00	2.60	2.60	2.60
Bus Fares Apia-Falefa	3.7	per trip	3.20	3.20	3.20	3.70	3.70	3.70
Car Tyre 205/70R(14)	3.7	size 14	215.00	215.00	215.00	220.00	220.00	230.00
Taxi Fares PO-Motootua Hosp	3.3	per trip	3.50	3.50	3.50	4.80	4.80	4.80
Taxi Fares Po-Malua	3.3	per trip	26.10	26.10	26.10	31.30	31.30	31.30
Taxi Fares PO-Falefa	3.3	per trip	36.00	36.00	36.00	43.20	43.20	43.20
Diesel	2.8	ltr	3.31	3.17	3.17	2.50	2.24	2.40
Car Registration 1500-2000 cc	2.0	ann rate	290.00	290.00	290.00	352.00	352.00	352.00
Boat Fares Mulifanua-Salelologa	1.3	one way	12.00	12.00	12.00	12.00	12.00	12.00
Communication								
Telephone local call	23.6	1 min	0.06	0.06	0.06	0.06	0.06	0.06
Telephone NZ call	10.6	3 mins	2.55	2.55	2.55	2.55	2.55	2.55
Telephone USA call	10.6	3 mins	5.37	5.37	5.35	5.35	5.35	5.35
Telephone Rental	10.6	monthly	24.15	24.15	24.15	24.15	24.15	24.15
Internet Prepaid Rates (a)	2.6	30 mins	5.10	5.10	5.10	5.10	5.10	5.10
PO Box rental (small box)	0.2	ann rate	80.00	80.00	80.00	80.00	80.00	80.00
Recreation and Culture								
National Lotto (a)	23.6	ticket	7.00	7.00	7.00	7.00	7.00	7.00
Tattslotto	3.8	ticket	13.50	13.50	13.50	13.50	13.50	13.50
News Paper Samoa Observer	2.7	each	2.50	2.50	2.50	2.50	2.50	2.50
Education								
School Fees Primary	10.5	Yr 4	10.00	10.00	10.00	10.00	10.00	10.00
School Fees Secondary	8.1	Yr 10	50.00	50.00	50.00	50.00	50.00	50.00
School Fees Primary	7.6	Yr 8	20.00	20.00	20.00	20.00	20.00	20.00
School Fees (NUS registration)	5.1	tertiary	265.00	265.00	265.00	292.00	292.00	292.00
Restaurants								
Meal (Fish & Chips)	11.0	1 serve	9.00	9.00	9.00	9.00	10.00	10.00
Meal (Pinati)	3.7	1 serve	3.00	3.00	3.00	3.00	3.00	3.00
Miscellaneous goods and services								
Toilet soap	7.6	90g	1.13	1.13	1.07	1.04	1.04	1.04
Diapers (16kg & over)	7.2	24pkt	37.40	37.40	37.73	37.90	37.90	37.75
Toilet Paper	3.6	roll	0.90	0.90	0.90	0.90	0.90	0.88

Source : Samoa Bureau Statistics

(a) : New commodity from August 2010

(b) : Average price across all brands

(P) : Provisional figures

Table 3. IMPORTED GOODS COMPONENT OF THE CONSUMER PRICE INDEX
(Base Period : Average Prices August 2010 = 100)

Group	All Items	Food and Non Alcoholic Beverages	Alcoholic Beverages and Tobacco	Clothing and Footwear	Housing,Water, Electricity, Gas and other Fuels	Furnishings, Household Equipment and Maintenance	Health	Transport	Communication	Recreation and Culture	Education	Restaurants	Miscellaneous goods and services
Weights	424.8	272.0	17.1	10.9	17.5	22.7	12.8	46.8	n.a.	1.3	n.a.	n.a.	23.7
Ave - 2012	106.7	105.7	113.9	110.6	103.8	102.1	95.1	118.6		76.7			100.9
Ave - 2013	106.9	106.2	112.1	110.9	101.7	103.0	95.2	119.7		77.0			100.7
Ave - 2014	108.2	108.2	113.4	110.0	101.7	102.3	94.0	120.8		78.2			98.4
2014													
April	106.9	106.7	106.0	111.1	101.2	100.8	92.1	121.6		78.9			98.5
May	106.6	106.6	106.0	110.1	100.8	101.9	92.1	118.7		78.9			99.0
June	108.3	108.9	115.2	109.8	100.3	102.0	92.1	118.4		78.9			98.2
July	109.0	109.2	115.2	109.8	101.8	101.9	93.6	121.9		78.9			98.5
August	109.6	110.0	115.2	109.6	101.8	101.9	95.0	122.8		78.9			98.5
September	109.4	109.3	115.2	109.6	102.1	102.8	96.7	124.1		78.9			98.5
October	109.0	108.9	115.2	109.7	102.6	102.8	96.6	122.9		78.1			96.4
November	108.4	108.6	115.2	109.6	102.7	102.5	96.6	119.7		78.1			96.3
December	107.3	108.1	112.2	109.6	102.0	102.5	96.7	114.2		78.1			96.3
2015													
January	107.3	108.8	112.2	109.5	101.9	102.7	96.4	110.1		78.1			96.1
February	105.8	108.9	112.2	108.8	98.3	102.2	96.4	97.4		81.5			96.2
March	103.6	107.2	112.2	108.9	95.9	102.2	96.4	88.1		81.5			96.2
April (P)	104.5	107.0	112.2	109.8	97.7	102.1	97.7	96.5		81.5			95.7
Percentage Change (P)													
Apr 2015 over Mar 2015	0.8	-0.3	0.0	0.8	1.9	0.0	1.3	9.5		0.0			-0.6
Apr 2015 over Apr 2014	-2.3	0.2	5.8	-1.2	-3.5	1.3	6.0	-20.6		3.3			-2.9
IMPORTED ITEMS UNDERLYING INDEX													
Group	All Items	Food and Non Alcoholic Beverages	Alcoholic Beverages and Tobacco	Clothing and Footwear	Housing,Water, Electricity, Gas and other Fuels	Furnishings, Household Equipment and Maintenance	Health	Transport	Communication	Recreation and Culture	Education	Restaurants	Miscellaneous goods and services
Weights	362.8	272.0	n.a.	10.9	15.4	22.7	12.8	4.0	n.a.	1.3	n.a.	n.a.	23.7
Ave - 2012	104.9	105.7		110.6	101.4	102.1	95.1	122.0		76.7			100.9
Ave - 2013	105.0	106.2		110.9	98.9	103.0	95.2	113.2		77.0			100.7
Ave - 2014	106.2	108.2		110.0	98.7	102.3	94.0	107.4		78.2			98.4
2014													
April	105.0	106.7		111.1	97.9	100.8	92.1	107.1		78.9			98.5
May	105.0	106.6		110.1	98.1	101.9	92.1	107.2		78.9			99.0
June	106.6	108.9		109.8	97.8	102.0	92.1	107.2		78.9			98.2
July	106.9	109.2		109.8	98.9	101.9	93.6	107.2		78.9			98.5
August	107.6	110.0		109.6	98.9	101.9	95.0	107.2		78.9			98.5
September	107.2	109.3		109.6	99.1	102.8	96.7	107.1		78.9			98.5
October	106.8	108.9		109.7	99.6	102.8	96.6	107.2		78.1			96.4
November	106.6	108.6		109.6	100.2	102.5	96.6	107.1		78.1			96.3
December	106.2	108.1		109.6	100.3	102.5	96.7	109.6		78.1			96.3
2015													
January	106.7	108.8		109.5	100.3	102.7	96.4	109.6		78.1			96.1
February	106.7	108.9		108.8	98.3	102.2	96.4	109.6		81.5			96.2
March	105.4	107.2		108.9	97.2	102.2	96.4	109.6		81.5			96.2
April (P)	105.3	107.0		109.8	98.1	102.1	97.7	113.9		81.5			95.7
Percentage Change (P)													
Apr 2015 over Mar 2015	-0.1	-0.3		0.8	1.0	0.0	1.3	3.9		0.0			-0.6
Apr 2015 over Apr 2014	0.3	0.2		-1.2	0.1	1.3	6.0	6.3		3.3			-2.9

Source : Samoa Bureau Statistics

(P): Provisional figures

Note: n.a. Not applicable

Table 4. LOCAL GOODS COMPONENT OF THE CONSUMER PRICE INDEX
(Base Period : Average Prices August 2010 = 100)

Group	All Items	Food and Non Alcoholic Beverages	Alcoholic Beverages and Tobacco	Clothing and Footwear	Housing, Water, Electricity, Gas and other Fuels	Furnishings, Household Equipment and Maintenance	Health	Transport	Communication	Recreation and Culture	Education	Restaurants	Miscellaneous goods and services
Weights	575.2	229.8	79.6	6.4	60.6	8.6	3.0	50.3	58.2	32.7	31.3	14.7	n.a.
Ave - 2012	108.8	115.8	106.5	117.3	110.3	95.9	100.0	104.2	100.0	98.8	101.6	100.0	
Ave - 2013	109.8	116.9	110.5	117.9	108.8	97.1	100.0	104.4	100.0	99.4	101.6	101.6	
Ave - 2014	108.1	106.4	114.4	131.1	113.4	94.6	170.0	113.9	100.0	99.8	101.6	109.4	
2014													
April	107.3	106.7	114.7	135.5	110.4	94.5	170.0	106.3	100.0	99.8	101.6	109.4	
May	108.0	104.4	114.7	135.5	113.5	94.5	170.0	121.0	100.0	99.8	101.6	109.4	
June	107.8	104.0	114.7	135.5	113.5	94.5	170.0	120.5	100.0	99.8	101.6	109.4	
July	106.6	100.8	114.7	135.5	113.5	94.5	170.0	120.7	100.0	99.8	101.6	109.4	
August	105.7	99.8	114.7	135.5	113.5	94.5	170.0	114.9	100.0	99.8	101.6	109.4	
September	105.7	99.6	114.7	135.5	116.2	94.5	170.0	112.3	100.0	99.8	101.6	109.4	
October	109.2	106.9	114.7	135.5	116.2	95.0	170.0	119.7	100.0	99.8	101.6	109.4	
November	109.7	107.8	114.7	135.5	116.2	95.0	170.0	120.4	100.0	99.8	101.6	109.4	
December	115.6	124.6	114.7	135.5	116.2	95.0	170.0	111.5	100.0	99.8	101.6	109.4	
2015													
January	114.4	117.0	117.5	117.9	116.2	95.0	170.0	129.0	100.0	99.8	103.4	109.4	
February	113.1	117.2	117.5	117.9	116.2	95.0	170.0	114.2	100.0	99.8	103.4	109.4	
March	112.6	116.4	117.5	135.5	111.1	95.0	170.0	112.5	100.0	99.8	103.4	118.7	
April (P)	114.4	119.7	115.6	135.5	111.1	95.5	170.0	121.3	100.0	99.8	103.4	118.7	
Percentage Change (P)													
Apr 2015 over Mar 2015	1.6	2.8	-1.6	0.0	0.0	0.6	0.0	7.8	0.0	0.0	0.0	0.0	0.0
Apr 2015 over Apr 2014	6.6	12.2	0.8	0.0	0.6	1.0	0.0	14.1	0.0	0.0	1.8	8.6	

LOCAL ITEMS UNDERLYING INDEX

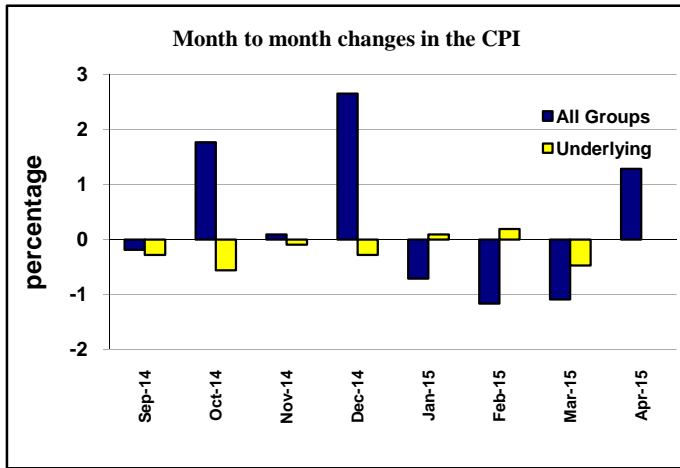
Group	All Items	Food and Non Alcoholic Beverages	Alcoholic Beverages and Tobacco	Clothing and Footwear	Housing, Water, Electricity, Gas and other Fuels	Furnishings, Household Equipment and Maintenance	Health	Transport	Communication	Recreation and Culture	Education	Restaurants	Miscellaneous goods and services
Weights	117.4	75.5	n.a.	6.4	1.2	8.6	0.9	9.1	n.a.	1.0	n.a.	14.7	n.a.
Ave - 2012	102.5	103.9		117.3	105.2	95.9	100.0	90.5		100.0		100.0	
Ave - 2013	103.8	105.5		117.9	105.9	97.1	100.0	90.5		100.0		101.6	
Ave - 2014	105.0	104.8		131.1	111.5	94.6	100.0	90.5		100.0		109.4	
2014													
April	105.3	105.3		135.5	111.6	94.5	100.0	90.5		100.0		109.4	
May	105.2	105.2		135.5	111.6	94.5	100.0	90.5		100.0		109.4	
June	105.7	105.7		135.5	111.6	94.5	100.0	90.5		100.0		109.4	
July	105.5	105.5		135.5	111.6	94.5	100.0	90.5		100.0		109.4	
August	105.7	105.7		135.5	111.6	94.5	100.0	90.5		100.0		109.4	
September	105.6	105.6		135.5	111.6	94.5	100.0	90.5		100.0		109.4	
October	104.5	104.5		135.5	111.6	95.0	100.0	90.5		100.0		109.4	
November	104.8	104.8		135.5	111.5	95.0	100.0	90.5		100.0		109.4	
December	104.7	104.7		135.5	111.5	95.0	100.0	90.5		100.0		109.4	
2015													
January	103.5	103.5		117.9	111.5	95.0	100.0	90.5		100.0		109.4	
February	104.2	104.2		117.9	111.5	95.0	100.0	90.5		100.0		109.4	
March	106.5	106.5		135.5	111.5	95.0	100.0	90.5		100.0		118.7	
April (P)	106.8	106.8		135.5	111.5	95.5	100.0	90.5		100.0		118.7	
Percentage Change (P)													
Apr 2015 over Mar 2015	0.3	0.3		0.0	0.0	0.5	0.0	0.0		0.0		0.0	
Apr 2015 over Apr 2014	1.4	1.4		0.0	-0.1	1.1	0.0	0.0		0.0		8.5	

Source : Samoa Bureau Statistics

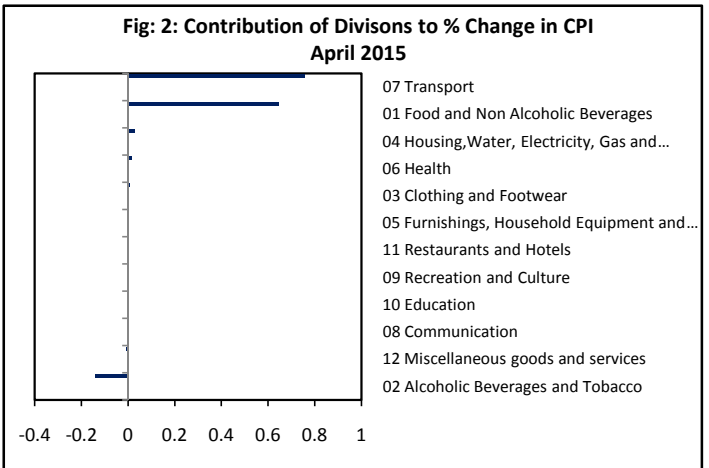
(P): Provisional figures

Note: n.a. Not applicable

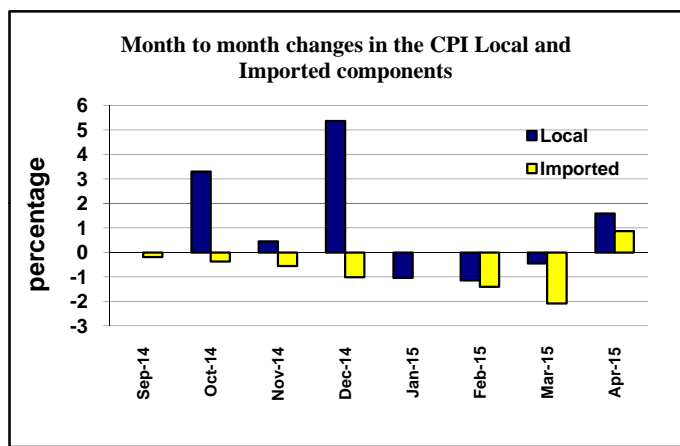
Graph.1



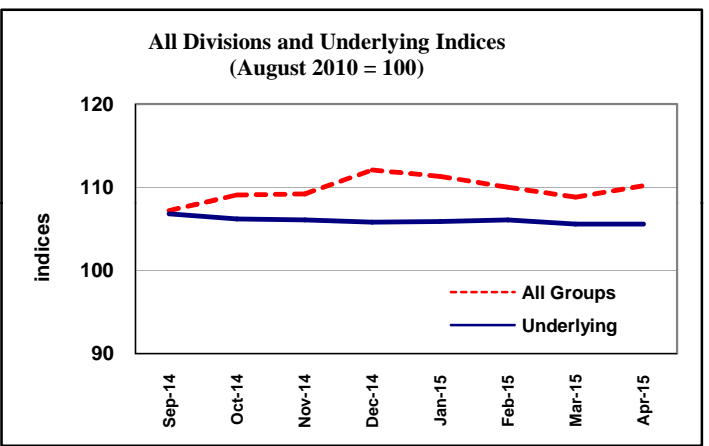
Graph.2



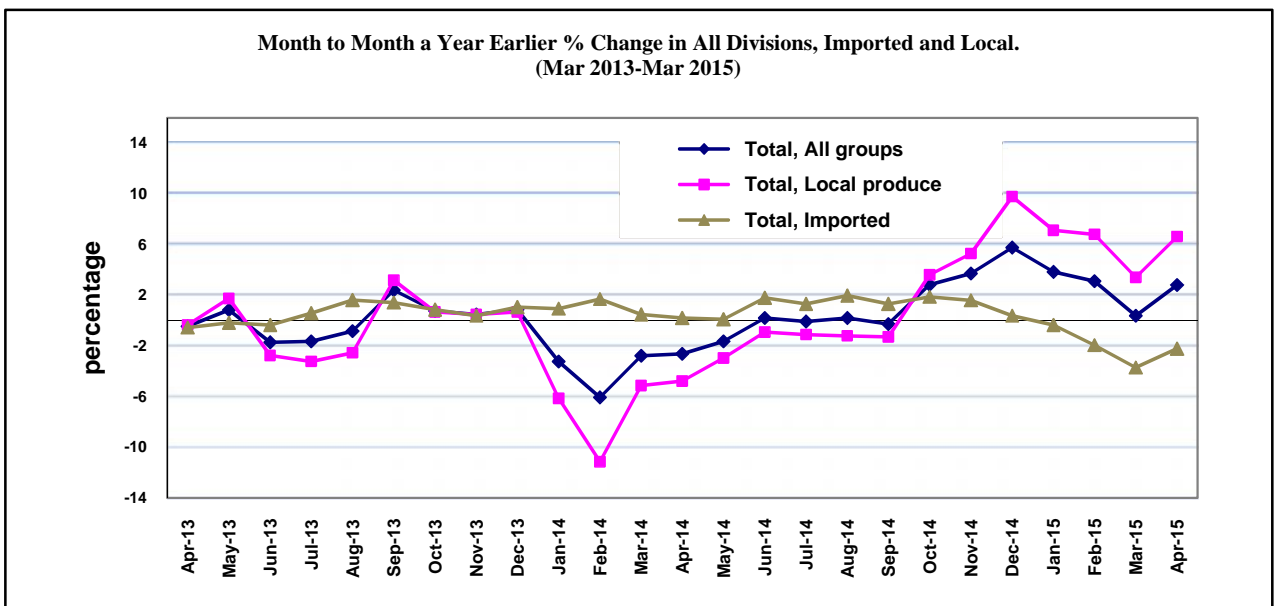
Graph.3



Graph.4



Graph 5



Source: Samoa Bureau of Statistics