

Please address all correspondence
To Government Statistician
In reply, please quote the file reference



GOVERNMENT OF SAMOA

File Ref: CPI 2/15

SAMOA BUREAU OF STATISTICS

CONSUMER PRICE INDEX February 2015

Key findings:

The Consumer Price Index for February 2015 decreased by 1.2 percent compared to the previous month.

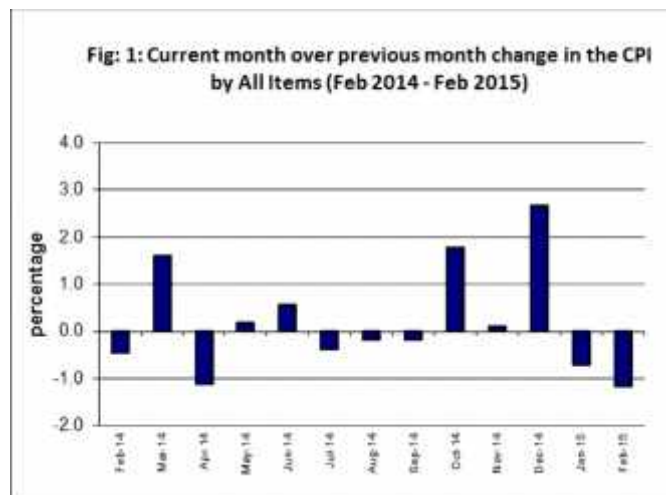
- Fuel prices in February 2015 mark a record low when compared with the past five years.
- Significant decreases in the global price of oil has pushed local prices down for fuel reflected in the 11.5 percent decline in the Transport index and contributed the most to the decline of the All Item Index.
- Housing, Water, Electricity, Gas and other Fuels also decreased by 0.7 percent
- The Average Annual Inflation for the year ended February 2015 was 1.0 percent.

In the year to February 2015, the CPI rose 3.1 percent.

SUMMARY

The Consumer Price Index for February 2015 was 1.2 percent lower than in January 2015 and was 3.1 percent higher than February 2014.

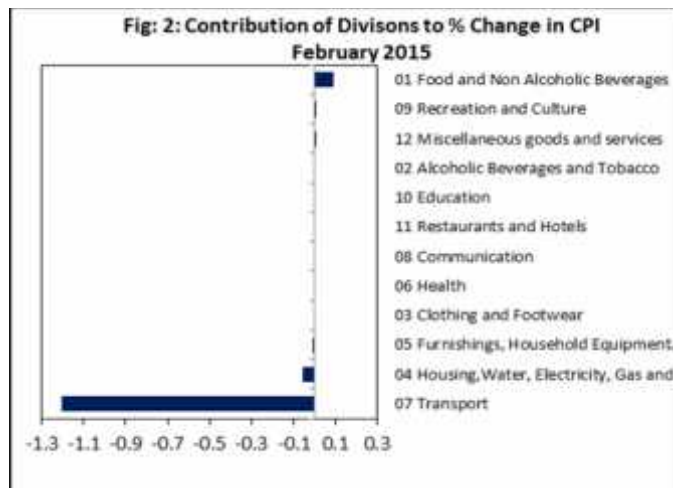
The Imported Goods Component registered a decrease of 1.4 percent, while Local Component also recorded a decrease of 1.1 percent from the previous month. Figure 1 shows the month to month percentage changes in the Consumer Price Index by all Divisions from February 2014 to February 2015.



Source : Samoa Bureau of Statistics

Total All Divisions Contribution

As depicted in Fig 2, Transport division was the main contributor to the overall decrease of 1.2 percent in the All Division Consumer Price Index.



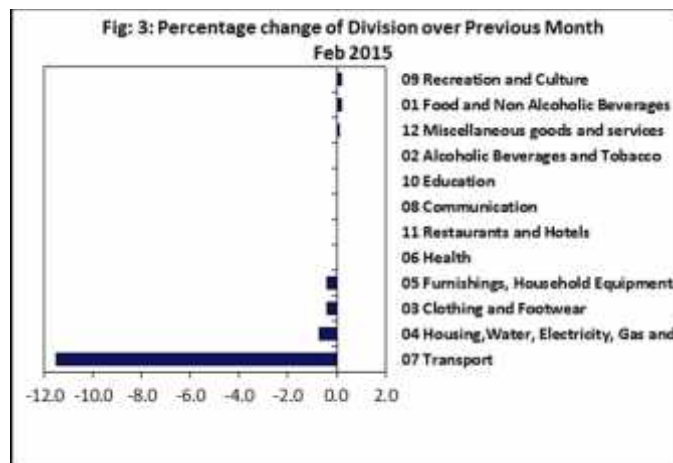
Source : Samoa Bureau of Statistics

Consumer Price Index (% Change)

The Transport index registered a decrease of 11.5 percent. Housing, Water, Electricity, Gas and other Fuels recorded a decrease of 0.7 percent, while Clothing and Footwear and Furnishing, Household Equipment and Maintenance indices both showed decreases of 0.4 percent.

On the other hand, increases were recorded for Food and Non Alcoholic Beverages with 0.2 percent, Recreation and Culture with 0.2 percent and Miscellaneous Goods and Services with 0.1 percent.

No changes were recorded for the Alcoholic Beverages, Health, Communication, Education and Restaurants indices. Graphically presented in Fig 3 is the February 2015 percentage change for all divisions from January 2015.



Source : Samoa Bureau of Statistics

Imported Goods Component

The Imported Goods Component of the Consumer Price Index registered a decrease of 1.4 percent when compared to the previous month. This decrease was mainly due to lower prices recorded for fuel (petrol, diesel and kerosene).

Local Goods Component

Decreased prices recorded for airline fare (Apia-Auckland-Apia) have resulted in the 1.1 percent decrease in the Local Good Component.

Transport Index

A decrease of 11.5 percent in the Transport index was a reflection of the lower prices recorded for fuel (petrol and diesel) and airline fare (Apia-Auckland-Apia).

Housing, Water, Electricity, Gas and other Fuels Index

Lower prices recorded for natural gas and kerosene is resulted in the 0.7 percent decrease in the Housing, Water, Electricity, Gas and other Fuels index.

Clothing and Footwear Index

Decreased prices recorded for dressing material children T-shirt and shirt (short sleeve) is reflected in the 0.4 percent decrease in the Clothing and Footwear index.

Furnishings, Household Equipment, and Maintenance Index

The 0.4 percent decrease in the Furnishing, Household, Equipment and Maintenance Index was a result of the lower prices recorded for washing powder and bath towel.

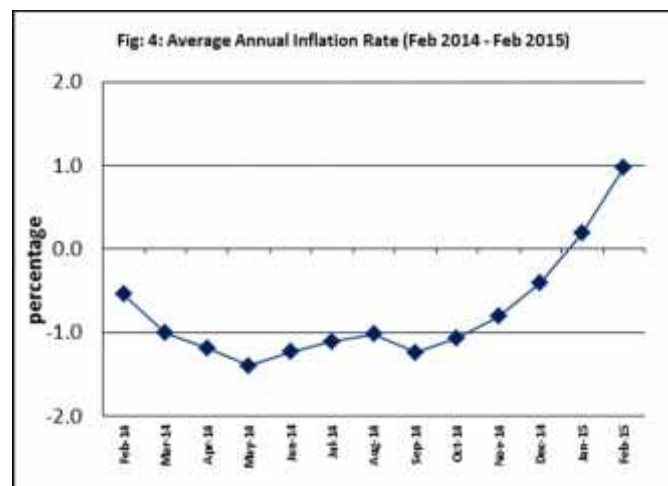
Underlying Indices ^{1/}

The All Items Underlying Index for February 2015 registered an increase of 0.2 percent when compared to January 2015, and an increase of 1.0 percent when compared to February 2014. The Local Items Underlying Index registered an increase of 0.7 percent while the Imported Items Underlying Index recorded no change from the previous month.

Average Annual Inflation Rate

The average annual inflation rate for the year ended February 2015 was 1.0 percent. For the twelve months ending February 2014 the inflation

rate was negative 0.5 percent. Presented in Fig 4 is the Average annual inflation rate (February 2014 - February 2015).



Source : Samoa Bureau of Statistics

The attached Tables and Graphs provide the user with more detailed analysis.

Leilua Taulealo.

ACTING GOVERNMENT STATISTICIAN

Date of release: 10th March 2015.

The next Consumer Price Index will be released on 9th April 2015.

^{1/}Underlying inflation is measure of inflation that excludes certain items that face volatile price movements. Underlying inflation eliminates products that can have temporary price shocks because these shocks can diverge from the overall trend of inflation and give a false measure of inflation.

Underlying inflation can also exclude government charges as they change rarely and are not set by an open market and so may also give a false measure of inflation. Prices that are subject to price control or subsidy could also be removed for the same reasons.

Table 1. CONSUMER PRICE INDEX.

(Base Period : Average Prices August 2010 = 100)

Group	All Items	Food and Non Alcoholic Beverages	Alcoholic Beverages and Tobacco	Clothing and Footwear	Housing, Water, Electricity, Gas and other Fuels	Furnishings, Household Equipment, and Maintenance	Health	Transport	Communication	Recreation and Culture	Education	Restaurants	Miscellaneous goods and services
Weights	1000	502	97	17	78	31	16	97	58	34	31	15	24
Ave - 2012	107.9	110.3	107.8	113.1	108.9	100.4	96.0	111.2	100.0	98.0	101.6	100.0	100.9
Ave - 2013	108.6	111.1	110.8	113.5	107.2	101.4	96.1	111.8	100.0	98.5	101.6	101.6	100.7
Ave - 2014	108.1	107.3	114.2	117.8	110.8	100.2	108.4	117.2	100.0	99.0	101.6	109.4	98.4
2014													
February	106.7	105.3	114.3	113.7	108.5	100.6	106.9	115.7	100.0	98.9	101.6	109.4	100.0
March	108.4	109.4	114.6	113.2	108.4	100.5	106.9	111.3	100.0	98.9	101.6	109.4	100.0
April	107.2	106.7	113.2	120.1	108.4	99.1	106.9	113.7	100.0	99.0	101.6	109.4	98.5
May	107.4	105.6	113.2	119.5	110.7	99.9	106.9	119.9	100.0	99.0	101.6	109.4	99.0
June	108.0	106.6	114.8	119.3	110.5	99.9	106.9	119.5	100.0	99.0	101.6	109.4	98.2
July	107.6	105.3	114.8	119.3	110.9	99.9	108.1	121.2	100.0	99.0	101.6	109.4	98.5
August	107.4	105.3	114.8	119.2	110.9	99.9	109.2	118.7	100.0	99.0	101.6	109.4	98.5
September	107.2	104.8	114.8	119.2	113.0	100.5	110.6	118.0	100.0	99.0	101.6	109.4	98.5
October	109.1	108.0	114.8	119.2	113.1	100.6	110.5	121.2	100.0	98.9	101.6	109.4	96.4
November	109.2	108.3	114.8	119.2	113.2	100.4	110.5	120.1	100.0	98.9	101.6	109.4	96.3
December	112.1	115.7	114.3	119.2	113.0	100.4	110.6	112.8	100.0	98.9	101.6	109.4	96.3
2015													
January	111.3	112.5	116.6	112.6	113.0	100.6	110.4	119.9	100.0	98.9	103.4	109.4	96.1
February (P)	110.0	112.7	116.6	112.2	112.2	100.2	110.4	106.1	100.0	99.1	103.4	109.4	96.2
Percentage Change (P)													
Feb 2015 over Jan 2015	-1.2	0.2	0.0	-0.4	-0.7	-0.4	0.0	-11.5	0.0	0.2	0.0	0.0	0.1
Feb 2015 over Feb 2014	3.1	7.0	2.0	-1.3	3.4	-0.4	3.3	-8.3	0.0	0.2	1.8	0.0	-3.8

ALL ITEMS UNDERLYING INDEX

Group	All Items	Food and Non Alcoholic Beverages	Alcoholic Beverages and Tobacco	Clothing and Footwear	Housing, Water, Electricity, Gas and other Fuels	Furnishings, Household Equipment, and Maintenance	Health	Transport	Communication	Recreation and Culture	Education	Restaurants	Miscellaneous goods and services
Weights	480	348	n.a.	17	17	31	14	13	n.a.	2	n.a.	15	24
Ave - 2012	104.3	105.3		113.1	101.7	100.4	95.4	100.1		86.8		100.0	100.9
Ave - 2013	104.7	106.0		113.5	99.4	101.4	95.5	97.4		87.0		101.6	100.7
Ave - 2014	105.9	107.4		117.8	99.6	100.2	94.4	95.7		87.7		109.4	98.4
2014													
February	105.0	106.4		113.7	98.9	100.6	92.7	95.6		87.0		109.4	100.0
March	105.1	106.5		113.2	98.9	100.5	92.7	95.6		87.0		109.4	100.0
April	105.0	106.3		120.1	98.9	99.1	92.7	95.6		88.1		109.4	98.5
May	105.0	106.2		119.5	99.1	99.9	92.7	95.6		88.1		109.4	99.0
June	106.4	108.2		119.3	98.8	99.9	92.7	95.6		88.1		109.4	98.2
July	106.6	108.3		119.3	99.8	99.9	94.0	95.6		88.1		109.4	98.5
August	107.1	109.0		119.2	99.8	99.9	95.3	95.6		88.1		109.4	98.5
September	106.8	108.4		119.2	100.0	100.5	96.9	95.6		88.1		109.4	98.5
October	106.2	107.8		119.2	100.4	100.6	96.8	95.6		87.6		109.4	96.4
November	106.1	107.7		119.2	101.0	100.4	96.8	95.6		87.6		109.4	96.3
December	105.8	107.2		119.2	101.1	100.4	96.9	96.4		87.6		109.4	96.3
2015													
January	105.9	107.7		112.6	101.1	100.6	96.6	96.4		87.6		109.4	96.1
February (P)	106.1	108.0		112.2	99.3	100.2	96.6	96.4		89.5		109.4	96.2
Percentage Change (P)													
Feb 2015 over Jan 2015	0.2	0.3		-0.4	-1.8	-0.4	0.0	0.0		2.2		0.0	0.1
Feb 2015 over Feb 2014	1.0	1.5		-1.3	0.4	-0.4	4.3	0.8		2.9		0.0	-3.8

Source : Samoa Bureau Statistics

(P): Provisional figures

Note: n.a. Not applicable

 Revised Figure

Table 2. AVERAGE RETAIL PRICES OF SELECTED COMMODITIES

Commodities	Weight	Unit	2013			2014			2015		
			Dec	Jan	Feb	Dec	Jan	Feb	Dec (P)	Jan	Feb
<i>Food and Non Alcoholic Beverages</i>											
Chicken Leg Quarters	41.8	lb	1.94	1.91	1.89	1.90	1.94	2.03			
Taro	41.2	lb	0.63	0.61	0.57	1.04	1.08	0.93			
Rice short grain	26.5	lb	1.49	1.48	1.55	1.52	1.46	1.47			
Mutton (Pure Flap)	25.5	lb	8.29	8.91	8.29	9.30	9.12	9.14			
Canned fish Natural Oil (b)	25.1	15oz	3.32	3.36	3.35	3.41	3.41	3.32			
Bread	22.3	loaf	1.90	1.91	1.91	1.74	1.74	1.74			
Canned fish Tomato Sauce (b)	22.1	15oz	2.74	2.74	2.74	2.84	3.00	2.96			
Taamu	18.9	lb	1.28	1.10	1.06	1.93	1.40	1.73			
Sugar Brown	18.7	lb	1.30	1.30	1.32	1.26	1.27	1.26			
Fish (piece)	14.5	lb	6.89	7.60	7.14	8.56	7.68	8.00			
Canned Beef (b)	13.7	12oz	13.05	13.20	13.28	12.83	12.79	12.86			
Mineral Water	12.4	500mls	1.85	1.85	1.85	2.00	2.00	2.00			
Chicken Wings (a)	12.0	lb	3.68	3.68	3.53	3.35	3.38	3.43			
Fish (string)	11.7	lb	4.88	3.93	3.96	4.63	4.49	5.22			
Koko Samoa	11.5	sml cup	5.00	5.00	5.00	5.29	5.29	5.14			
Biscuits Sky Flakes (a)	11.0	850g	14.10	14.15	14.15	14.10	14.10	14.33			
Bananas	10.5	lb	0.29	0.31	0.30	0.36	0.35	0.37			
Fish (large)	10.2	lb	8.29	8.40	5.88	9.62	8.40	6.21			
Milk unskimmed UHT (b)	9.9	ltr	4.13	4.07	4.09	4.08	4.08	4.11			
Butter Anchor	9.4	lb	10.73	10.73	10.80	11.08	11.08	10.98			
Soft Drink Coke	9.2	750mls	3.54	3.54	3.54	3.59	3.59	3.59			
Ramen Maggie	8.8	85g	1.06	1.08	1.08	1.08	1.08	1.08			
Flour	6.8	lb	1.11	1.11	1.17	1.05	1.10	1.05			
Yam	6.3	lb	1.70	1.64	1.29	1.78	1.75	1.76			
Oil Cooking oil (a)	5.8	500mls	6.88	6.65	6.65	6.60	6.60	6.60			
Taro Leaves	5.5	lb	2.21	2.57	3.33	2.59	2.53	2.86			
Coconuts	5.1	lb	0.38	0.32	0.32	0.29	0.27	0.26			
Chinese Cabbage	5.0	lb	1.35	3.63	3.04	1.94	2.74	3.08			
Salted Beef	4.9	lb	5.92	5.92	5.93	6.15	6.01	6.61			
Eggs	4.3	doz	5.93	5.93	6.10	5.73	5.59	5.59			
Stewing beef	4.3	lb	5.58	5.58	5.58	5.80	5.80	6.14			
Breadfruit	4.2	lb	0.52	0.30	0.36	0.70	0.48	0.23			
<i>Alcoholic Beverages and Tobacco</i>											
Cigarettes (b)	41.70	20rolls	9.00	9.00	9.36	9.43	9.86	9.86			
Beer Vailima	32.3	355mls	4.53	4.53	4.53	4.54	4.54	4.54			
Spirit Volka nip	6.3	nip	10.33	10.33	10.33	10.00	10.00	10.00			
Spirit whisky nip	6.3	nip	10.33	10.33	10.33	10.00	10.00	10.00			
<i>Clothing and Footwear</i>											
School Uniform	5.4	each	29.00	29.00	29.00	34.00	29.00	29.00			
le Solosolo	2.1	2yds	7.62	7.55	7.55	7.67	7.67	7.78			
Jandals soft rubber	2.1	10.5	8.35	8.18	8.18	8.18	8.18	8.18			
Jandals hard rubber	1.6	8	3.75	3.50	3.50	3.25	3.25	3.25			
<i>Housing, Water, Electricity, Gas and other Fuels</i>											
Electricity	56.9	kwh	1.02	1.02	1.02	1.05	1.05	1.05			
Roofing iron	5.2	12ft	52.40	52.40	52.40	53.60	53.60	53.60			
Cement	4.4	40kg	22.88	22.88	22.88	23.63	23.38	23.00			
Natural gas	3.5	20lb	77.25	75.45	75.45	75.45	75.45	70.80			
Kerosene	2.1	ltr	2.87	2.94	3.09	2.68	2.65	2.30			
<i>Furnishings, Household Equipment and Routine Household Maintenance</i>											
Washing powder (b)	6.00	200g	1.66	1.66	1.70	1.55	1.55	1.51			
Washing soap	4.3	bar	2.88	2.90	2.90	2.93	2.93	2.93			
Refridgerator	3.7	331ltrs	2900.00	2900.00	2900.00	2900.00	2900.00	2900.00			
Sheeting material	3.3	yd	12.95	12.95	12.95	12.95	12.95	12.95			
Sefe 3 sheves (a)	2.7	48*48	515.00	515.00	515.00	515.00	515.00	515.00			
Kerosene stove 2 burners	2.0	each	154.67	144.33	144.33	141.67	141.67	141.67			
Mosquito coil	2.0	box	1.26	1.26	1.26	1.28	1.28	1.28			

Commodities	Weight	Unit	2013			2014			2015	
			Dec	Jan	Feb	Dec	Jan	Feb (P)		
Health										
Paracetamol	3.7	20tablet	1.75	1.75	1.75	1.80	1.88	1.88		
Magnesium Trisillicate	3.6	120mls	7.30	7.30	7.30	7.60	7.60	7.60		
Cough Mixture	3.6	100mls	9.20	9.40	9.40	9.90	9.40	9.40		
Hospital Charge	2.1	per night	5.00	10.00	10.00	10.00	10.00	10.00		
Transport										
Petrol	39.1	ltr	2.96	3.04	3.18	2.90	2.78	2.42		
Labour charge car repair	9.1	min crg	51.67	51.67	51.67	51.67	51.67	51.67		
Air Fares Apia-Auckland-Apia	7.8	return	1551.85	2162.06	1917.45	1206.61	2449.35	1268.20		
Air Fares Fagalii-Pago	7.8	return	365.00	365.00	380.00	370.00	395.00	395.00		
Bus Fares Apia-Motootua Hosp	3.7	per trip	0.80	0.80	0.80	1.30	1.30	1.30		
Bus Fares Apia-Malua	3.7	per trip	2.00	2.00	2.00	2.60	2.60	2.60		
Bus Fares Apia-Falefa	3.7	per trip	3.20	3.20	3.20	3.70	3.70	3.70		
Car Tyre 205/70R(14)	3.7	size 14	220.00	215.00	215.00	220.00	220.00	220.00		
Taxi Fares PO-Motootua Hosp	3.3	per trip	3.50	3.50	3.50	4.80	4.80	4.80		
Taxi Fares Po-Malua	3.3	per trip	26.10	26.10	26.10	31.30	31.30	31.30		
Taxi Fares PO-Falefa	3.3	per trip	36.00	36.00	36.00	43.20	43.20	43.20		
Diesel	2.8	ltr	3.12	3.18	3.31	2.89	2.83	2.50		
Car Registration 1500-2000 cc	2.0	ann rate	290.00	290.00	290.00	290.00	352.00	352.00		
Boat Fares Mulifanua-Salelologa	1.3	one way	12.00	12.00	12.00	12.00	12.00	12.00		
Communication										
Telephone local call	23.6	1 min	0.06	0.06	0.06	0.06	0.06	0.06		
Telephone NZ call	10.6	3 mins	2.55	2.55	2.55	2.55	2.55	2.55		
Telephone USA call	10.6	3 mins	5.37	5.37	5.37	5.35	5.35	5.35		
Telephone Rental	10.6	monthly	24.15	24.15	24.15	24.15	24.15	24.15		
Internet Prepaid Rates (a)	2.6	30 mins	5.10	5.10	5.10	5.10	5.10	5.10		
PO Box rental (small box)	0.2	ann rate	80.00	80.00	80.00	80.00	80.00	80.00		
Recreation and Culture										
National Lotto (a)	23.6	ticket	7.00	7.00	7.00	7.00	7.00	7.00		
Tattslotto	3.8	ticket	13.50	13.50	13.50	13.50	13.50	13.50		
News Paper Samoa Observer	2.7	each	2.50	2.50	2.50	2.50	2.50	2.50		
Education										
School Fees Primary	10.5	Yr 4	10.00	10.00	10.00	10.00	10.00	10.00		
School Fees Secondary	8.1	Yr 10	50.00	50.00	50.00	50.00	50.00	50.00		
School Fees Primary	7.6	Yr 8	20.00	20.00	20.00	20.00	20.00	20.00		
School Fees (NUS registration)	5.1	tertiary	265.00	265.00	265.00	265.00	292.00	292.00		
Restaurants										
Meal (Fish & Chips)	11.0	1 serve	9.00	9.00	9.00	9.00	9.00	9.00		
Meal (Pinati)	3.7	1 serve	3.00	3.00	3.00	3.00	3.00	3.00		
Miscellaneous goods and services										
Toilet soap	7.6	90g	1.10	1.13	1.13	1.04	1.04	1.04		
Diapers (16kg & over)	7.2	24pkt	37.78	37.40	37.40	37.80	37.80	37.90		
Toilet Paper	3.6	roll	0.90	0.90	0.90	0.90	0.90	0.90		

Source : Samoa Bureau Statistics

(a) : New commodity from August 2010

(b) : Average price across all brands

(P) : Provisional figures

 Revised Figure

Table 3. IMPORTED GOODS COMPONENT OF THE CONSUMER PRICE INDEX
(Base Period : Average Prices August 2010 = 100)

Group	All Items	Food and Non Alcoholic Beverages	Alcoholic Beverages and Tobacco	Clothing and Footwear	Housing,Water, Electricity, Gas and other Fuels	Furnishings, Household Equipment and Maintenance	Health	Transport	Communication	Recreation and Culture	Education	Restaurants	Miscellaneous goods and services
Weights	424.8	272.0	17.1	10.9	17.5	22.7	12.8	46.8	<i>n.a.</i>	1.3	<i>n.a.</i>	<i>n.a.</i>	23.7
<i>Ave - 2012</i>	106.7	105.7	113.9	110.6	103.8	102.1	95.1	118.6		76.7			100.9
<i>Ave - 2013</i>	106.9	106.2	112.1	110.9	101.7	103.0	95.2	119.7		77.0			100.7
<i>Ave - 2014</i>	108.2	108.2	113.4	110.0	101.7	102.3	94.0	120.8		78.2			98.4
2014													
February	107.9	106.8	115.2	111.1	102.0	102.9	92.1	124.2		77.0			100.0
March	107.6	107.1	115.2	110.4	101.2	102.7	92.1	121.3		77.0			100.0
April	106.9	106.7	106.0	111.1	101.2	100.8	92.1	121.6		78.9			98.5
May	106.6	106.6	106.0	110.1	100.8	101.9	92.1	118.7		78.9			99.0
June	108.3	108.9	115.2	109.8	100.3	102.0	92.1	118.4		78.9			98.2
July	109.0	109.2	115.2	109.8	101.8	101.9	93.6	121.9		78.9			98.5
August	109.6	110.0	115.2	109.6	101.8	101.9	95.0	122.8		78.9			98.5
September	109.4	109.3	115.2	109.6	102.1	102.8	96.7	124.1		78.9			98.5
October	109.0	108.9	115.2	109.7	102.6	102.8	96.6	122.9		78.1			96.4
November	108.4	108.6	115.2	109.6	102.7	102.5	96.6	119.7		78.1			96.3
December	107.3	108.1	112.2	109.6	102.0	102.5	96.7	114.2		78.1			96.3
2015													
January	107.3	108.8	112.2	109.5	101.9	102.7	96.4	110.1		78.1			96.1
February (P)	105.8	108.9	112.2	108.8	98.3	102.2	96.4	97.4		81.5			96.2
Percentage Change (P)													
Feb 2015 over Jan 2015	-1.4	0.1	0.0	-0.7	-3.5	-0.5	0.0	-11.5		4.4			0.1
Feb 2015 over Feb 2014	-1.9	2.0	-2.7	-2.1	-3.6	-0.6	4.6	-21.6		5.8			-3.8
IMPORTED ITEMS UNDERLYING INDEX													
Group	All Items	Food and Non Alcoholic Beverages	Alcoholic Beverages and Tobacco	Clothing and Footwear	Housing,Water, Electricity, Gas and other Fuels	Furnishings, Household Equipment and Maintenance	Health	Transport	Communication	Recreation and Culture	Education	Restaurants	Miscellaneous goods and services
Weights	362.8	272.0	<i>n.a.</i>	10.9	15.4	22.7	12.8	4.0	<i>n.a.</i>	1.3	<i>n.a.</i>	<i>n.a.</i>	23.7
<i>Ave - 2012</i>	104.9	105.7		110.6	101.4	102.1	95.1	122.0		76.7			100.9
<i>Ave - 2013</i>	105.0	106.2		110.9	98.9	103.0	95.2	113.2		77.0			100.7
<i>Ave - 2014</i>	106.2	108.2		110.0	98.7	102.3	94.0	107.4		78.2			98.4
2014													
February	105.3	106.8		111.1	97.9	102.9	92.1	107.2		77.0			100.0
March	105.4	107.1		110.4	97.9	102.7	92.1	107.2		77.0			100.0
April	105.0	106.7		111.1	97.9	100.8	92.1	107.1		78.9			98.5
May	105.0	106.6		110.1	98.1	101.9	92.1	107.2		78.9			99.0
June	106.6	108.9		109.8	97.8	102.0	92.1	107.2		78.9			98.2
July	106.9	109.2		109.8	98.9	101.9	93.6	107.2		78.9			98.5
August	107.6	110.0		109.6	98.9	101.9	95.0	107.2		78.9			98.5
September	107.2	109.3		109.6	99.1	102.8	96.7	107.1		78.9			98.5
October	106.8	108.9		109.7	99.6	102.8	96.6	107.2		78.1			96.4
November	106.6	108.6		109.6	100.2	102.5	96.6	107.1		78.1			96.3
December	106.2	108.1		109.6	100.3	102.5	96.7	109.6		78.1			96.3
2015													
January	106.7	108.8		109.5	100.3	102.7	96.4	109.6		78.1			96.1
February (P)	106.7	108.9		108.8	98.3	102.2	96.4	109.6		81.5			96.2
Percentage Change (P)													
Feb 2015 over Jan 2015	0.0	0.1		-0.7	-2.0	-0.5	0.0	0.0		4.4			0.1
Feb 2015 over Feb 2014	1.4	2.0		-2.1	0.4	-0.6	4.6	2.3		5.8			-3.8

Source : Samoa Bureau Statistics

(P): Provisional figures

Note: n.a. Not applicable

■ Revised Figure

Table 4. LOCAL GOODS COMPONENT OF THE CONSUMER PRICE INDEX
(Base Period : Average Prices August 2010 = 100)

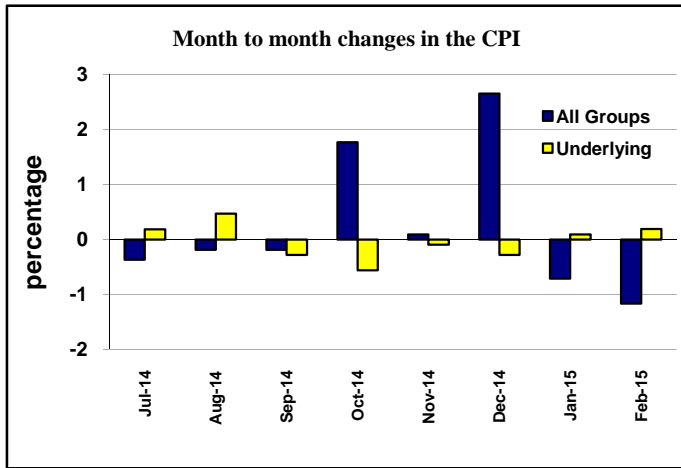
Group	All Items	Food and Non Alcoholic Beverages	Alcoholic Beverages and Tobacco	Clothing and Footwear	Housing, Water, Electricity, Gas and other Fuels	Furnishings, Household Equipment and Maintenance	Health	Transport	Communication	Recreation and Culture	Education	Restaurants	Miscellaneous goods and services
Weights	575.2	229.8	79.6	6.4	60.6	8.6	3.0	50.3	58.2	32.7	31.3	14.7	n.a.
Ave - 2012	108.8	115.8	106.5	117.3	110.3	95.9	100.0	104.2	100.0	98.8	101.6	100.0	
Ave - 2013	109.8	116.9	110.5	117.9	108.8	97.1	100.0	104.4	100.0	99.4	101.6	101.6	
Ave - 2014	108.1	106.4	114.4	131.1	113.4	94.6	170.0	113.9	100.0	99.8	101.6	109.4	
2014													
February	105.9	103.5	114.1	117.9	110.4	94.5	170.0	107.7	100.0	99.8	101.6	109.4	
March	108.9	112.1	114.5	117.9	110.4	94.5	170.0	102.0	100.0	99.8	101.6	109.4	
April	107.3	106.7	114.7	135.5	110.4	94.5	170.0	106.3	100.0	99.8	101.6	109.4	
May	108.0	104.4	114.7	135.5	113.5	94.5	170.0	121.0	100.0	99.8	101.6	109.4	
June	107.8	104.0	114.7	135.5	113.5	94.5	170.0	120.5	100.0	99.8	101.6	109.4	
July	106.6	100.8	114.7	135.5	113.5	94.5	170.0	120.7	100.0	99.8	101.6	109.4	
August	105.7	99.8	114.7	135.5	113.5	94.5	170.0	114.9	100.0	99.8	101.6	109.4	
September	105.7	99.6	114.7	135.5	116.2	94.5	170.0	112.3	100.0	99.8	101.6	109.4	
October	109.2	106.9	114.7	135.5	116.2	95.0	170.0	119.7	100.0	99.8	101.6	109.4	
November	109.7	107.8	114.7	135.5	116.2	95.0	170.0	120.4	100.0	99.8	101.6	109.4	
December	115.6	124.6	114.7	135.5	116.2	95.0	170.0	111.5	100.0	99.8	101.6	109.4	
2015													
January	114.4	117.0	117.5	117.9	116.2	95.0	170.0	129.0	100.0	99.8	103.4	109.4	
February (P)	113.1	117.2	117.5	117.9	116.2	95.0	170.0	114.2	100.0	99.8	103.4	109.4	
Percentage Change (P)													
Feb 2015 over Jan 2015	-1.1	0.2	0.0	0.0	0.0	0.0	0.0	-11.5	0.0	0.0	0.0	0.0	0.0
Feb 2015 over Feb 2014	6.8	13.2	3.0	0.0	5.2	0.5	0.0	6.0	-0.1	0.0	1.8	0.0	0.0
LOCAL ITEMS UNDERLYING INDEX													
Group	All Items	Food and Non Alcoholic Beverages	Alcoholic Beverages and Tobacco	Clothing and Footwear	Housing, Water, Electricity, Gas and other Fuels	Furnishings, Household Equipment and Maintenance	Health	Transport	Communication	Recreation and Culture	Education	Restaurants	Miscellaneous goods and services
Weights	117.4	75.5	n.a.	6.4	1.2	8.6	0.9	9.1	n.a.	1.0	n.a.	14.7	n.a.
Ave - 2012	102.5	103.9		117.3	105.2	95.9	100.0	90.5		100.0		100.0	
Ave - 2013	103.8	105.5		117.9	105.9	97.1	100.0	90.5		100.0		101.6	
Ave - 2014	105.0	104.8		131.1	111.5	94.6	100.0	90.5		100.0		109.4	
2014													
February	104.3	104.3		117.9	111.6	94.5	100.0	90.5		100.0		109.4	
March	103.9	103.9		117.9	111.6	94.5	100.0	90.5		100.0		109.4	
April	105.3	105.3		135.5	111.6	94.5	100.0	90.5		100.0		109.4	
May	105.2	105.2		135.5	111.6	94.5	100.0	90.5		100.0		109.4	
June	105.7	105.7		135.5	111.6	94.5	100.0	90.5		100.0		109.4	
July	105.5	105.5		135.5	111.6	94.5	100.0	90.5		100.0		109.4	
August	105.7	105.7		135.5	111.6	94.5	100.0	90.5		100.0		109.4	
September	105.6	105.6		135.5	111.6	94.5	100.0	90.5		100.0		109.4	
October	104.5	104.5		135.5	111.6	95.0	100.0	90.5		100.0		109.4	
November	104.8	104.8		135.5	111.5	95.0	100.0	90.5		100.0		109.4	
December	104.7	104.7		135.5	111.5	95.0	100.0	90.5		100.0		109.4	
2015													
January	103.5	103.5		117.9	111.5	95.0	100.0	90.5		100.0		109.4	
February (P)	104.2	104.2		117.9	111.5	95.0	100.0	90.5		100.0		109.4	
Percentage Change (P)													
Feb 2015 over Jan 2015	0.7	0.7		0.0	0.0	0.0	0.0	0.0		0.0		0.0	
Feb 2015 over Feb 2014	-0.1	-0.1		0.0	-0.1	0.5	0.0	0.0		0.0		0.0	

Source : Samoa Bureau Statistics

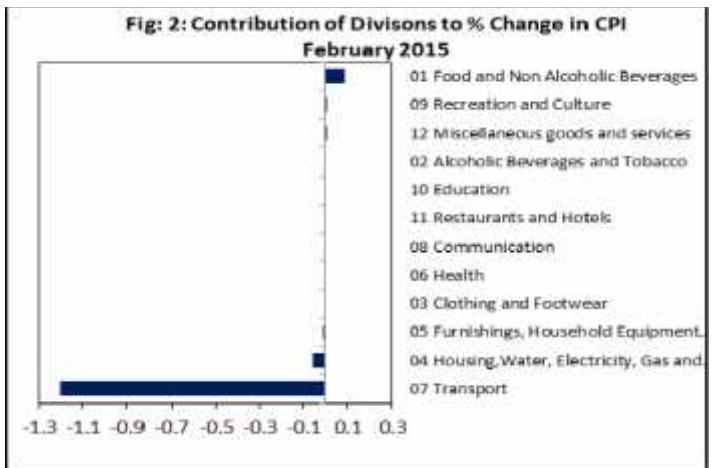
(P): Provisional figures

Note: n.a. Not applicable

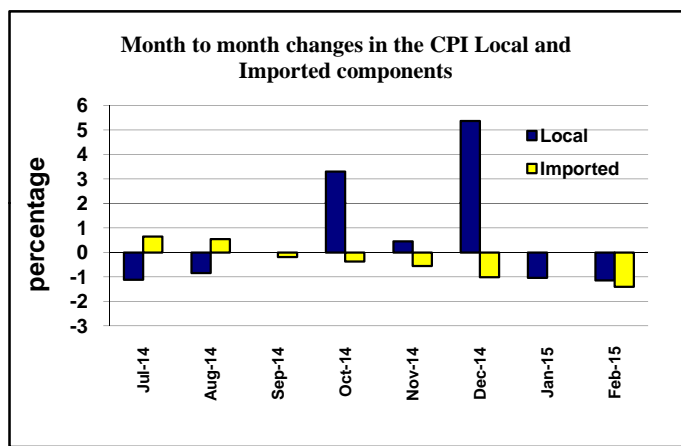
Graph.1



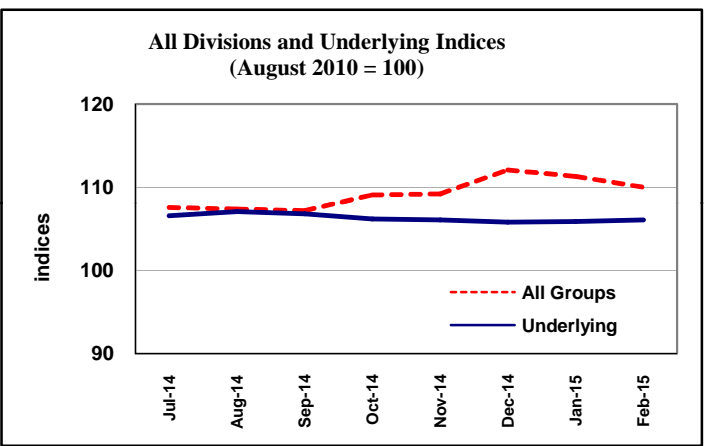
Graph.2



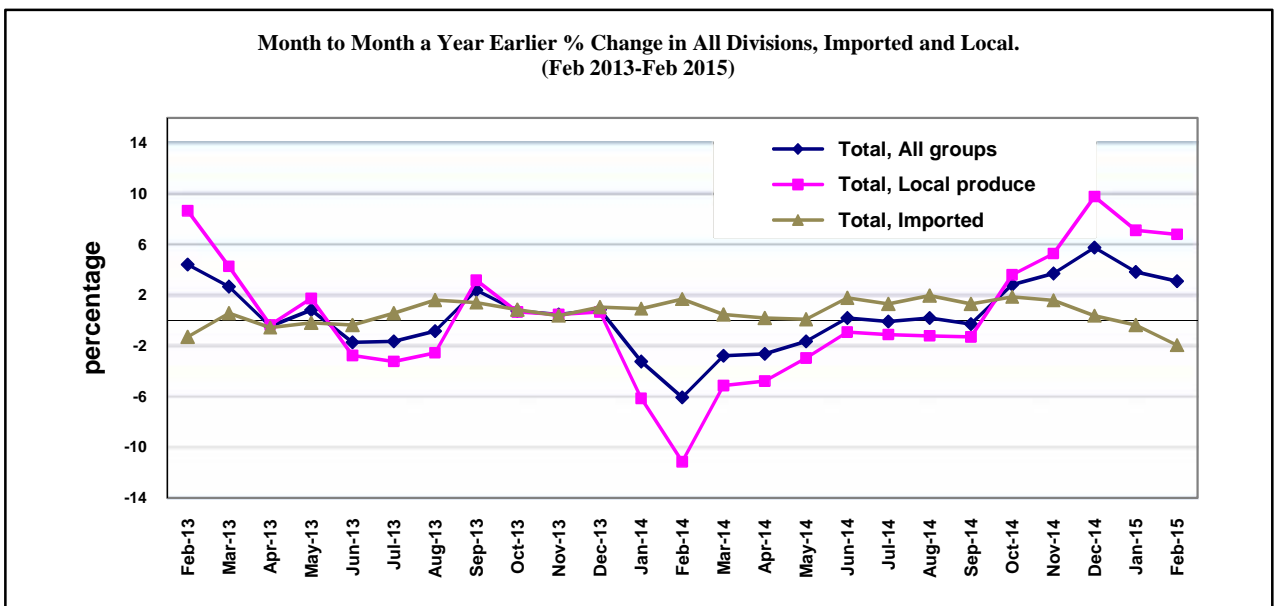
Graph.3



Graph.4



Graph 5



Source: Samoa Bureau of Statistics