



GOVERNMENT OF SAMOA

## SAMOA BUREAU OF STATISTICS

### **IMPORT PRICE INDEX – December 2014 quarter (Base Period: Quarter 1 2009 = 100.0)**

Issue No. 18

#### **Key findings**

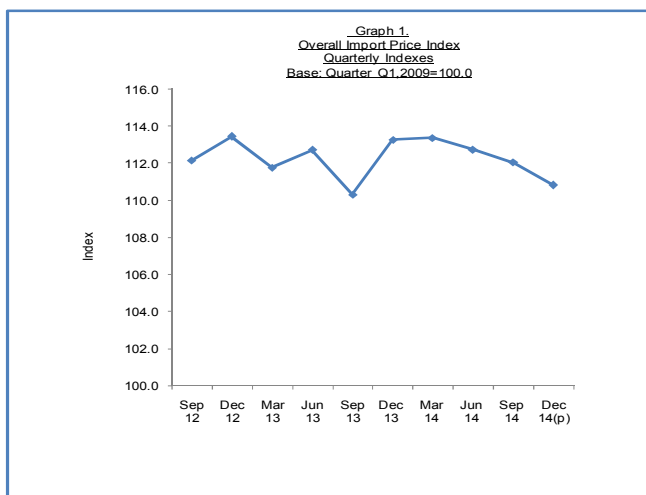
For the December 2014 quarter compared to the September 2014 quarter

- Import price index fell 1.1 percent.
- Mineral Products prices recorded the largest decrease (down 4.5 percent).

#### **Overview**

The import price index for the December 2014 quarter showed overall decreased 1.1 percent when compared to the September 2014 quarter. In comparison with the December 2013 quarter, the current import prices decreased 2.2 percent.

The four quarters ending December 2014 increased 0.2 percent in the overall import prices compared to the four quarters ending December 2013. See table 1 and graph 1

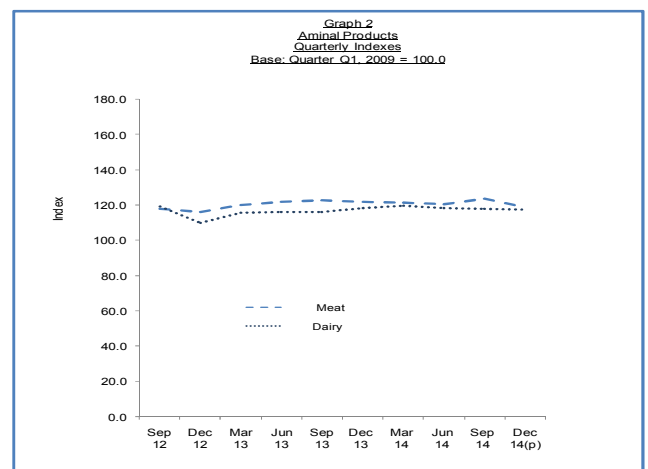


Source: Samoa Bureau of Statistics

#### **HS Section 1: Live Animals; Animal Products prices fall 3.1%**

Live Animals and Animal Products prices in the December 2014 quarter decreased 3.1 percent when compared to the September 2014 quarter. This fall was influenced by lower prices for meat products (down 4.1 percent), reflecting lower prices for chicken (leg quarter and drum stick); down 4.5 percent and lamb (mutton flap and neck); down 3.7 percent. Prices for dairy products also decreased (down 0.4 percent). When compared to the December 2013 quarter, the current live animals and animal products prices decreased 2.3 percent. Weakening New Zealand dollars has a downward impact on live animals and animal products prices in the quarter under review.

In the four quarters ending December 2014, live animals and animal products prices decreased 0.1 percent when compared to the four quarters ending December 2013. See tables 1 & 2 and graph 2.

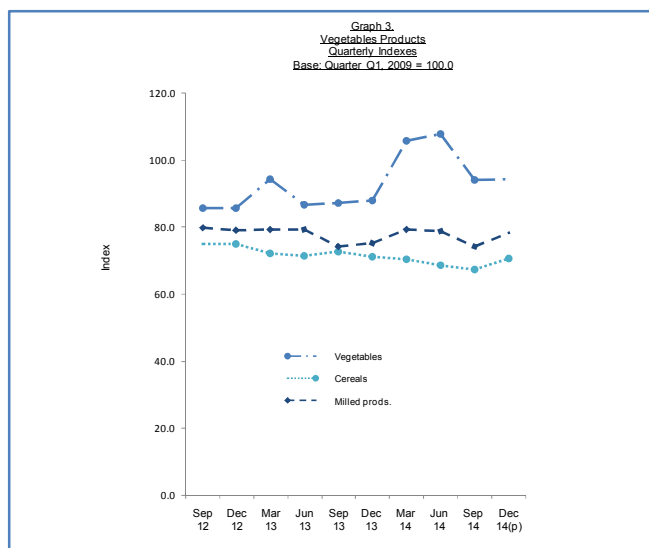


Source: Samoa Bureau of Statistics

## **HS Section 2: Vegetable Products prices rise 4%.**

Vegetable Products prices rose 4 percent in the December 2014 quarter, following a 6 percent fall recorded in the September 2014 quarter. The rise was influenced by higher prices for milled products (up 5.3 percent) and cereal products (up 4.4 percent), reflecting higher prices for flour and rice respectively. Prices for vegetable products showed an increase of 0.2 percent, as higher prices for onions (up 8.5 percent) was partly offset by lower prices for potatoes (down 4.8 percent). When compared to the December 2013 quarter, the current vegetable products prices increased 3.2 percent.

Reviewing the four quarters ending December 2014 over the four quarters ending December 2013, the current vegetable products prices increased 1.9 percent. See tables 1 & 2 and graph 3.

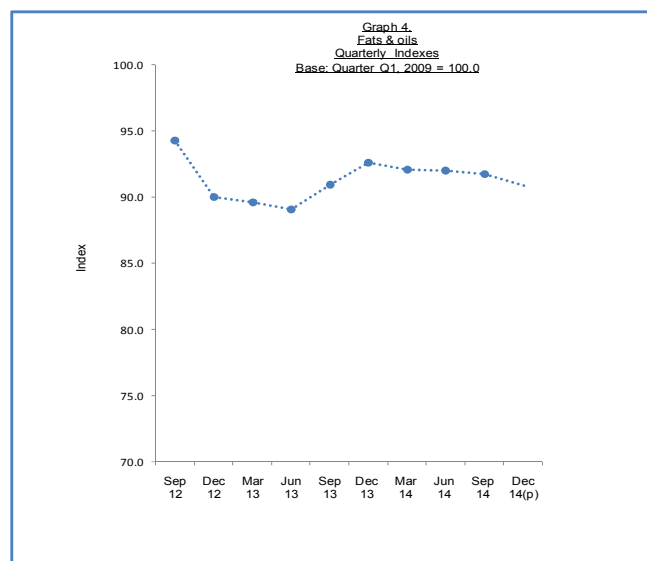


Source: Samoa Bureau of Statistics

## **HS Section 3: Animal or Vegetable fats & oils prices fall 0.9%**

Animal or Vegetable fats and oils prices in the December 2014 quarter decreased 0.9 percent, influenced by lower prices for margarine (down 4.7 percent), and partly offset by higher prices for vegetable oils (up 2.7 percent) whereas the soya-bean oil prices remained unchanged from the September 2014 quarter. When compared to the December 2013 quarter, the current animal or vegetable fats and oils prices decreased 1.9 percent.

The overall price for animal or vegetable fats and oils in the four quarters ending December 2014 was 1.2 percent higher than the four quarters ending December 2013. See tables 1 & 2 and graph 4

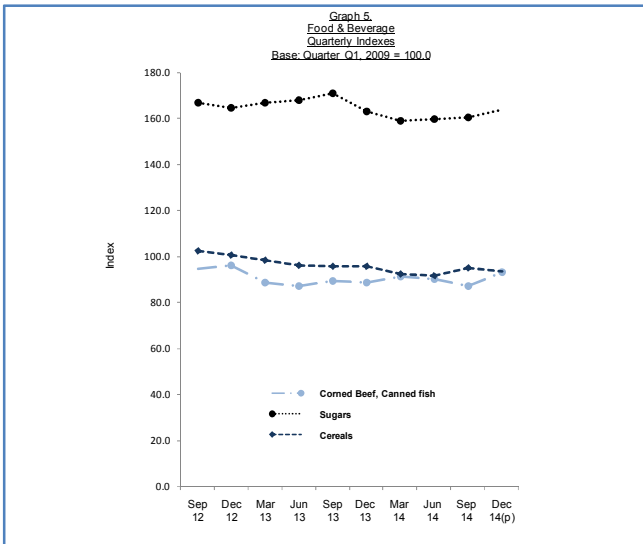


Source: Samoa Bureau of Statistics

## **HS Section 4: Food and Beverages prices rise 2.7%**

Food and Beverages prices rose 2.7 percent in the December 2014 quarter when compared to the September 2014 quarter. Mainly responsible for this rise were higher prices for corned beef and canned fish (up 6.5 percent) and sugar (up 2.3 percent). In comparison with the December 2013 quarter, the current food and beverages prices increased 1.4 percent.

In comparing the four quarters ending December 2014 over the four quarters ending December 2013, the overall price for food and beverages decreased 1.6 percent. See table 1 and graph 5.

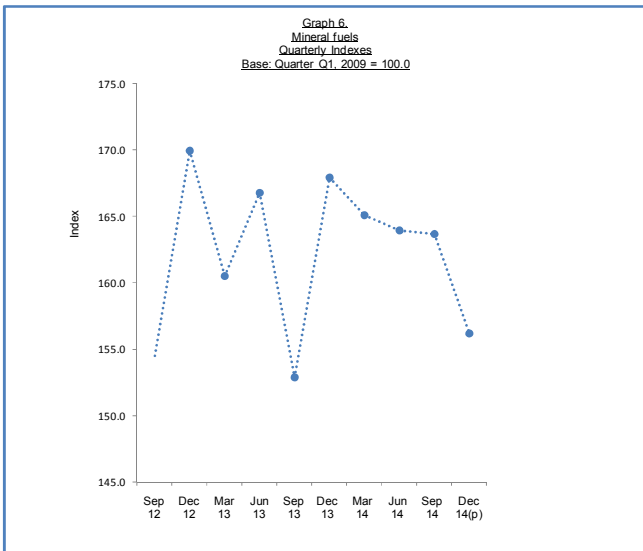


Source: Samoa Bureau of Statistics

**HS Section 5: Mineral Products prices fell 4.5%**

The most significant downward contribution to import prices came from mineral products prices, which fell 4.5 percent in the December 2014 quarter; reflecting lower prices for petroleum oil. In comparison with the December 2013 quarter, the current mineral products prices decreased 7 percent.

The overall price for mineral products in the four quarters ending December 2014 was 0.1 percent higher than the price of the four quarters ending December 2013. See tables 1 & 2 and graph 6.



Source: Samoa Bureau of Statistics

**Technical notes**

The Import Price Index (MPI) measures changes in the cost, insurance, and freight (CIF) prices of imports of merchandise into Samoa. It is a fixed weight index with Quarter 1 2009 = 100.0 and is calculated on a quarterly basis using the International Harmonized System of Trade Classification (HS). The items included in the index were selected on the basis of their importance to the total import.

The scope of the MPI relates to the following sections of the International Harmonized System of Trade Classification (HS): 1. Live Animals: Animal Products, 2. Vegetable Products, 3. Animal or Vegetable fats and oils, 4. Food and Beverages and 5. Mineral Products. The index represents 50 percent of total Imports.

---

If you would like more information about the Import Price Index for Quarter 4 2014, please contact the Economics Division of the Samoa Bureau of Statistics at:

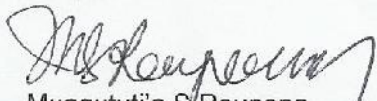



**SAMOA BUREAU OF STATISTICS**

*Economic Statistics Division  
FMFM II Building, Level 1  
P O Box 1151  
Apia, Samoa*

*Phone: (685) 62014/62022  
Fax: (685) 24675  
E-mail: infostats@sbs.gov.ws*

The MPI for March 2015 quarter will be ready on 30<sup>th</sup> April 2015.



**Muagutuli'a S' Reupena.**  
**GOVERNMENT STATISTICIAN**

**IMPORT PRICE INDEX**  
Base: Quarter Q1, 2009 = 100.0

Table 1

CODE	DESCRIPTION	Weight	2012		2013				2014				% Change			
			Quarterly												Dec-14 / Sep-14	Dec-14 / Dec-13
			Sep	Dec	Mar	Jun	Sep	Dec	Mar	Jun	Sep	Dec (p)				
<b>I</b>	<b>ANIMAL PRODUCTS</b>	<b>100</b>	118.1	114.3	118.6	120.2	120.8	120.9	121.0	119.8	121.9	118.1	-3.1	-2.3		
2	Meat	71.2	117.7	116.1	119.9	121.9	122.8	121.9	121.5	120.5	123.5	118.5	-4.1	-2.8		
4	Dairy	28.8	119.0	109.8	115.6	115.8	116.0	118.4	119.7	118.1	117.8	117.3	-0.4	-0.9		
<b>II.</b>	<b>VEGETABLE PRODUCTS</b>	<b>100</b>	79.4	78.9	79.7	78.0	76.0	76.2	81.0	80.5	75.6	78.6	4.0	3.2		
7	Vegetables	17.0	85.9	85.9	94.4	86.8	87.1	88.0	105.7	107.9	94.2	94.3	0.2	7.2		
10	Cereals	31.7	75.0	75.0	72.1	71.2	72.6	71.2	70.4	68.6	67.6	70.6	4.4	-0.9		
11	Milled prods.	51.3	80.0	79.1	79.4	79.3	74.4	75.3	79.3	78.8	74.4	78.4	5.3	4.1		
<b>III.</b>	<b>FATS &amp; OILS</b>	<b>100</b>	94.3	90.1	89.6	89.1	91.0	92.7	92.1	92.0	91.8	90.9	-0.9	-1.9		
15	Fats & oils	100.0	94.3	90.1	89.6	89.1	91.0	92.7	92.1	92.0	91.8	90.9	-0.9	-1.9		
<b>IV.</b>	<b>FOOD &amp; BEVERAGE</b>	<b>100</b>	114.5	114.0	110.4	109.6	110.9	108.7	107.7	107.4	107.3	110.2	2.7	1.4		
16	Corned Beef, Canned fish	43.6	94.6	96.3	88.6	87.5	89.2	88.7	91.1	90.0	87.5	93.2	6.5	5.0		
17	Sugars	24.0	166.6	164.4	166.8	168.0	171.0	162.8	159.1	159.8	160.2	163.9	2.3	0.7		
19	Cereals	32.4	102.5	100.4	98.1	96.1	95.7	95.6	92.1	91.8	94.7	93.3	-1.5	-2.4		
<b>V.</b>	<b>MINERAL PRODUCTS</b>	<b>100</b>	154.5	170.0	160.5	166.8	152.9	168.0	165.1	163.9	163.7	156.2	-4.5	-7.0		
27	Mineral fuels	100	154.5	170.0	160.5	166.8	152.9	168.0	165.1	163.9	163.7	156.2	-4.5	-7.0		
<b>Total, All groups</b>		<b>500</b>	<b>112.2</b>	<b>113.4</b>	<b>111.8</b>	<b>112.7</b>	<b>110.3</b>	<b>113.3</b>	<b>113.4</b>	<b>112.7</b>	<b>112.1</b>	<b>110.8</b>	<b>-1.1</b>	<b>-2.2</b>		

Source: Samoa Bureau Statistics (Economics Division)

(P) Provisional figures

**IMPORT PRICE INDEX**  
Base: Quarter Q1, 2009 = 100.0

Table 2

	Weight	2012		2013				2014				% Change	
		Quarterly											
		Sep	Dec	Mar	Jun	Sep	Dec	Mar	Jun	Sep	Dec (P)	Dec 14 / Sep 14	
<b>I. ANIMAL PRODUCTS</b>													
<b>02 Meat</b>	<b>100.0</b>												
0204 Sheep	33.7	171.1	166.9	168.0	175.5	184.4	183.3	186.0	192.8	190.6	183.6		-3.7
0207 Poultry	66.3	90.5	90.3	95.4	94.7	91.4	90.7	88.7	83.8	89.5	85.4		-4.5
<b>04 Dairy</b>	<b>100.0</b>												
0401 Milk	42.0	111.8	114.9	120.6	118.3	118.0	120.6	116.4	115.0	117.8	116.3		-1.2
0402 Milk, conc.	17.9	112.9	116.1	122.4	119.6	121.2	127.1	137.8	138.5	143.1	137.2		-4.1
0405 Butter	24.1	89.7	90.5	90.7	92.5	90.7	91.7	97.0	93.8	84.1	85.3		1.4
0407 Eggs	16.0	188.7	118.2	132.5	140.1	143.0	142.9	142.2	140.0	140.3	145.6		3.8
<b>II. VEGETABLE PRODUCTS</b>													
<b>07 Vegetables</b>	<b>100.0</b>												
0701 Potatoes	56.5	86.8	89.5	104.0	104.6	101.5	102.7	110.9	111.4	104.7	99.7		-4.8
0703 Onions	43.5	84.8	81.2	81.9	63.6	68.3	68.8	99.1	103.4	80.4	87.3		8.5
<b>10 Cereals</b>	<b>100.0</b>												
1006 Rice	100.0	75.0	75.0	72.1	71.2	72.6	71.2	70.4	68.6	67.6	70.6		4.4
<b>11 Milled prods.</b>	<b>100.0</b>												
1101 Wheat	100.0	80.0	79.1	79.4	79.3	74.4	75.3	79.3	78.8	74.4	78.4		5.3
<b>III. FATS &amp; OILS</b>													
<b>15 Fats &amp; oils</b>	<b>100.0</b>												
1507 Soya-bean	27.7	100.0	100.0	100.0	100.0	100.0	100.0	100.0	100.0	100.0	100.0		0.0
1516 Hydrogenated	36.7	91.0	80.0	79.5	76.2	81.6	80.4	82.3	80.1	79.3	81.4		2.7
1517 Margarine	35.7	93.3	92.7	91.9	93.8	93.5	99.6	96.1	98.1	98.3	93.7		-4.7
<b>IV. FOOD, BEVERAGES&amp; TOBACCO</b>													
<b>16 Meat, fish</b>	<b>100.0</b>												
1602 Corned Beef	31.0	109.0	113.1	105.8	109.8	102.2	104.1	105.3	105.3	100.2	102.1		1.9
1604 Canned fish	69.0	88.1	88.7	80.9	77.4	83.3	81.9	84.7	83.2	81.8	89.2		9.0
<b>17 Sugars</b>	<b>100.0</b>												
1701 Cane, beet	100.0	166.6	164.4	166.8	168.0	171.0	162.8	159.1	159.8	160.2	163.9		2.3
<b>19 Cereals</b>	<b>100.0</b>												
1902 Pasta	56.0	109.9	107.8	103.4	100.7	100.7	100.1	95.6	95.5	100.7	108.9		8.1
1905 Bread	44.0	93.2	91.0	91.3	90.2	89.4	89.9	87.6	87.2	87.1	73.4		-15.7
<b>V. MINERAL PRODUCTS</b>													
<b>27 Mineral fuels</b>	<b>100.0</b>												
2710 Petroleum oils	100.0	154.5	170.0	160.5	166.8	152.9	168.0	165.1	163.9	163.7	156.2		-4.5

Source: Samoa Bureau Statistics (Economics Division)

(P) Provisional figures