

Please address all correspondence  
To Government Statistician  
In reply, please quote the file reference



File Ref: CPI 1/15

GOVERNMENT OF SAMOA

## SAMOA BUREAU OF STATISTICS

# CONSUMER PRICE INDEX January 2015

### Key findings:

With the beginning of a way calendar year, the Consumer Price Index for January 2015 decreased by 0.7 percent compared to the previous month.

- The Food and Non Alcoholic Beverages index decreased by 2.8 percent, driven down by lower prices for market staples and fresh fish.
- Clothing and Footwear index also decreased by 5.5 percent.
- Transport index increased by 6.3 percent.
- The Average Annual Inflation for the year ended January 2015 was 0.2 percent.

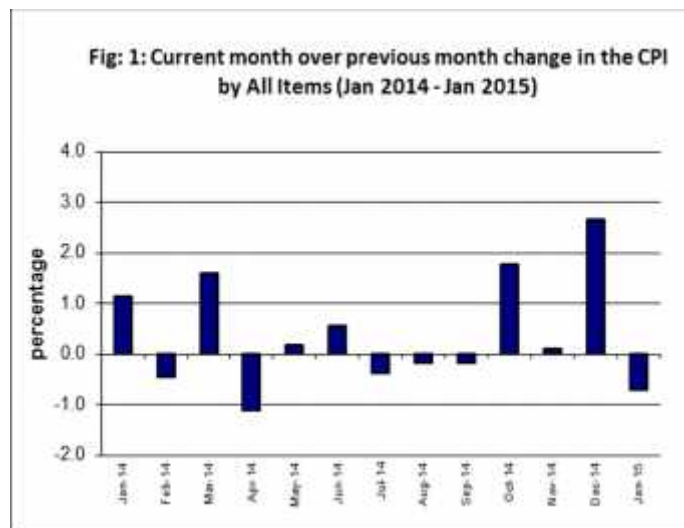
In the year to January 2015, the CPI rose 3.8 percent.

### SUMMARY

The Consumer Price Index for January 2015 was 0.7 percent lower than in December 2014 and was 3.8 percent higher than January 2014.

The decrease of the Local Goods Component by 1.1 percent reflects lower prices for market staples and fresh fish and also the main contributor to the decrease of 0.7 percent in the All Items Consumer Price Index.

The Imported Goods Component recorded no change over December 2014. Figure 1 shows the month to month percentage changes in the Consumer Price Index by All Items from January 2014 to January 2015.

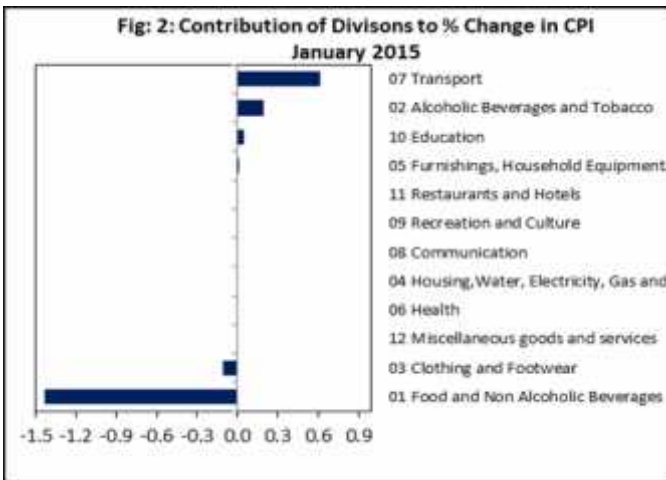


Source : Samoa Bureau of Statistics

### Total All Divisions Contribution

Food and Non Alcoholic Beverages divisions along with Clothing and Footwear were the main contributors to the overall decrease of 0.7 percent in the All Division Consumer Price Index.

On the other hand, there were offsetting positive contributions from Transport division with 0.6, Alcoholic Beverages and Tobacco division with 0.2 percent and Education division with 0.1 percent increases.



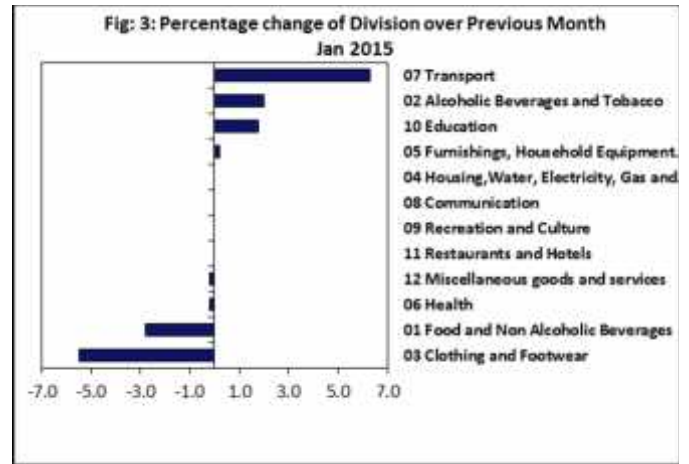
Source : Samoa Bureau of Statistics

### Consumer Price Index (% Change)

The 0.7 percent decrease in the Overall Index was mainly due to a decrease of 2.8 percent in Food and Non Alcoholic Beverages index. Clothing and Footwear index recorded a decrease of 5.5 percent influenced by back to school sales for school uniform and related clothing items, while Health and Miscellaneous Goods and Services indices both registered decreases of 0.2 percent.

On the other hand, increases were recorded for Transport with 6.3 percent stemming from increased prices for vehicle registration and airlines (Apia-Auckland-Apia), Alcoholic Beverages and Tobacco with 2.0 percent, Education with 1.8 percent prompted by increased registered fees for tertiary (NUS) and Furnishing, Household Equipment and Maintenance with 0.2 percent.

No changes were recorded for the Housing, Water, Electricity, Gas and other Fuels, Communication, Recreation and Culture and Restaurants indices. Graphically presented in Fig 3 is the January 2015 percentage change for all divisions from December 2014.



Source : Samoa Bureau of Statistics

### Local Goods Component

The Local Goods Component of the Consumer Price Index registered a decrease of 1.1 percent when compared to the previous month. This decrease was mainly due to lower prices recorded for taamu, fresh fish (piece, large and string) and breadfruit.

### Imported Goods Component

The Imported Good Component recorded no change from the previous month.

### Food and Non Alcoholic Beverages Index

Lower prices recorded for rice, mutton flap, taamu, fresh fish (piece, large and string) and breadfruit is reflected in the 2.8 percent decrease in the Food and Non Alcoholic Beverages index.



### Clothing and Footwear Index

The lower prices recorded for school uniform and other clothing items resulted in the 5.5 percent decrease in the Clothing and Footwear index.

### Transport Index

An increase of 6.3 percent in the Transport index was a reflection of the higher prices recorded for airline fare (Apia-Auckland-Apia) and car registration, which offset lower prices recorded for fuel (petrol and diesel).

### Alcoholic Beverages and Tobacco

The 2.0 percent increase in the Alcoholic Beverages and Tobacco index was mainly due to higher prices recorded for cigarette (Pall Mall Filter and Menthol).

### Education Index

Increased of NUS registration fee is reflected in the 1.8 percent increase in the Education index.

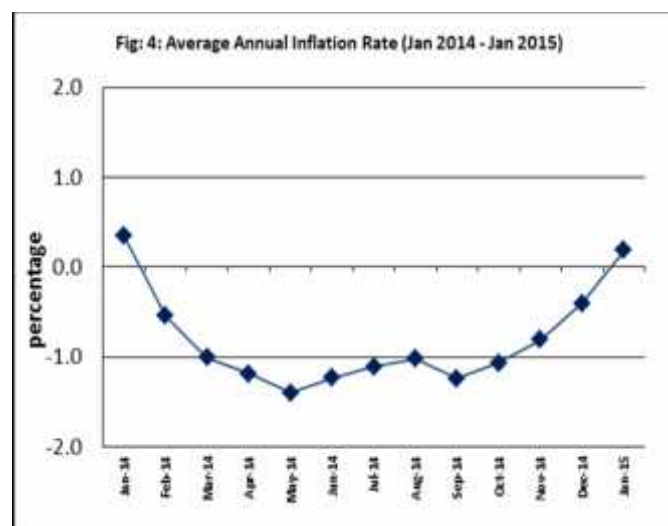
### Underlying Indices <sup>1/</sup>

The All Items Underlying Index for January 2015 registered an increase of 0.1 percent when compared to December 2014, and an increase of 0.5 percent when compared to January 2014. The Imported Items Underlying Index registered an increase of 0.5 percent while the Local Items

Underlying Index is reported an increase of 1.1 percent.

### Average Annual Inflation Rate

The average annual inflation rate for the year ended January 2015 was 0.2%. For the twelve months ending January 2014 the inflation rate was 0.4 percent, therefore the average annual inflation rate declined by 0.2 percentage points over the year. Presented in Fig 4 is the Average annual inflation rates (January 2014 - January 2015)



Source : Samoa Bureau of Statistics

The attached Tables and Graphs provide the user with more detailed analysis.

Muagututi'a S Reupena  
**GOVERNMENT STATISTICIAN**

Date of release: 10<sup>th</sup> February 2015.

The next Consumer Price Index will be released on 10<sup>th</sup> March 2015.

<sup>1/</sup> Quarterly movements in the 'headline' CPI series can be volatile. This volatility reflects price changes in particular items that may be due, among other factors, to fluctuations in commodity markets and agricultural conditions, policy changes, or seasonal or infrequent price resetting.

Underlying inflation is measure of inflation that excludes certain items that face volatile price movements. Underlying inflation eliminates products that can have temporary price shocks because these shocks can diverge from the overall trend of inflation and give a false measure of inflation.

**Table 1. CONSUMER PRICE INDEX.**  
(Base Period : Average Prices August 2010 = 100)

Group	All Items	Food and Non Alcoholic Beverages	Alcoholic Beverages and Tobacco	Clothing and Footwear	Housing, Water, Electricity, Gas and other Fuels	Furnishings, Household Equipment, and Maintenance	Health	Transport	Communication	Recreation and Culture	Education	Restaurants	Miscellaneous goods and services
<b>Weights</b>	<b>1000</b>	<b>502</b>	<b>97</b>	<b>17</b>	<b>78</b>	<b>31</b>	<b>16</b>	<b>97</b>	<b>58</b>	<b>34</b>	<b>31</b>	<b>15</b>	<b>24</b>
Ave - 2012	107.9	110.3	107.8	113.1	108.9	100.4	96.0	111.2	100.0	98.0	101.6	100.0	100.9
Ave - 2013	108.6	111.1	110.8	113.5	107.2	101.4	96.1	111.8	100.0	98.5	101.6	101.6	100.7
Ave - 2014	108.1	107.3	114.2	117.8	110.8	100.2	108.4	117.2	100.0	99.0	101.6	109.4	98.4
2014													
January	107.2	106.9	112.3	112.4	108.4	100.2	106.9	114.6	100.0	98.9	101.6	109.4	100.0
February	106.7	105.3	114.3	113.7	108.5	100.6	106.9	115.7	100.0	98.9	101.6	109.4	100.0
March	108.4	109.4	114.6	113.2	108.4	100.5	106.9	111.3	100.0	98.9	101.6	109.4	100.0
April	107.2	106.7	113.2	120.1	108.4	99.1	106.9	113.7	100.0	99.0	101.6	109.4	98.5
May	107.4	105.6	113.2	119.5	110.7	99.9	106.9	119.9	100.0	99.0	101.6	109.4	99.0
June	108.0	106.6	114.8	119.3	110.5	99.9	106.9	119.5	100.0	99.0	101.6	109.4	98.2
July	107.6	105.3	114.8	119.3	110.9	99.9	108.1	121.2	100.0	99.0	101.6	109.4	98.5
August	107.4	105.3	114.8	119.2	110.9	99.9	109.2	118.7	100.0	99.0	101.6	109.4	98.5
September	107.2	104.8	114.8	119.2	113.0	100.5	110.6	118.0	100.0	99.0	101.6	109.4	98.5
October	109.1	108.0	114.8	119.2	113.1	100.6	110.5	121.2	100.0	98.9	101.6	109.4	96.4
November	109.2	108.3	114.8	119.2	113.2	100.4	110.5	120.1	100.0	98.9	101.6	109.4	96.3
December	112.1	115.7	114.3	119.2	113.0	100.4	110.6	112.8	100.0	98.9	101.6	109.4	96.3
2015													
January (P)	111.3	112.5	116.6	112.6	113.0	100.6	110.4	119.9	100.0	98.9	103.4	109.4	96.1
<b>Percentage Change (P)</b>													
Jan 2015 over Dec 2014	-0.7	-2.8	2.0	-5.5	0.0	0.2	-0.2	6.3	0.0	0.0	1.8	0.0	-0.2
Jan 2015 over Jan 2014	3.8	5.2	3.8	0.2	4.2	0.4	3.3	4.6	0.0	0.0	1.8	0.0	-3.9

**ALL ITEMS UNDERLYING INDEX**

Group	All Items	Food and Non Alcoholic Beverages	Alcoholic Beverages and Tobacco	Clothing and Footwear	Housing, Water, Electricity, Gas and other Fuels	Furnishings, Household Equipment, and Maintenance	Health	Transport	Communication	Recreation and Culture	Education	Restaurants	Miscellaneous goods and services
<b>Weights</b>	<b>480</b>	<b>348</b>	<b>n.a.</b>	<b>17</b>	<b>17</b>	<b>31</b>	<b>14</b>	<b>13</b>	<b>n.a.</b>	<b>2</b>	<b>n.a.</b>	<b>15</b>	<b>24</b>
Ave - 2012	104.3	105.3		113.1	101.7	100.4	95.4	100.1		86.8		100.0	100.9
Ave - 2013	104.7	106.0		113.5	99.4	101.4	95.5	97.4		87.0		101.6	100.7
Ave - 2014	105.9	107.4		117.8	99.6	100.2	94.4	95.7		87.7		109.4	98.4
2014													
January	105.4	107.0		112.4	98.8	100.2	92.7	95.6		87.0		109.4	100.0
February	105.0	106.4		113.7	98.9	100.6	92.7	95.6		87.0		109.4	100.0
March	105.1	106.5		113.2	98.9	100.5	92.7	95.6		87.0		109.4	100.0
April	105.0	106.3		120.1	98.9	99.1	92.7	95.6		88.1		109.4	98.5
May	105.0	106.2		119.5	99.1	99.9	92.7	95.6		88.1		109.4	99.0
June	106.4	108.2		119.3	98.8	99.9	92.7	95.6		88.1		109.4	98.2
July	106.6	108.3		119.3	99.8	99.9	94.0	95.6		88.1		109.4	98.5
August	107.1	109.0		119.2	99.8	99.9	95.3	95.6		88.1		109.4	98.5
September	106.8	108.4		119.2	100.0	100.5	96.9	95.6		88.1		109.4	98.5
October	106.2	107.8		119.2	100.4	100.6	96.8	95.6		87.6		109.4	96.4
November	106.1	107.7		119.2	101.0	100.4	96.8	95.6		87.6		109.4	96.3
December	105.8	107.2		119.2	101.1	100.4	96.9	96.4		87.6		109.4	96.3
2015													
January (P)	105.9	107.7		112.6	101.1	100.6	96.6	96.4		87.6		109.4	96.1
<b>Percentage Change (P)</b>													
Jan 2015 over Dec 2014	0.1	0.5		-5.5	0.0	0.2	-0.3	0.0		0.0		0.0	-0.2
Jan 2015 over Jan 2014	0.5	0.6		0.2	2.4	0.4	4.3	0.8		0.7		0.0	-3.9

Source : Samoa Bureau Statistics

(P): Provisional figures

Note: n.a. Not applicable

Revised Figure

**Table 2. AVERAGE RETAIL PRICES OF SELECTED COMMODITIES**

Commodities	Weight	Unit	2013			2014		2015
			Nov	Dec	Jan	Nov	Dec	Jan (P)
<b><i>Food and Non Alcoholic Beverages</i></b>								
Chicken Leg Quarters	41.8	lb	1.99	1.94	1.91	1.90	1.90	1.94
Taro	41.2	lb	0.69	0.63	0.61	0.82	1.04	1.08
Rice short grain	26.5	lb	1.51	1.49	1.48	1.62	1.52	1.46
Mutton (Pure Flap)	25.5	lb	7.82	8.29	8.91	8.87	9.30	9.12
Canned fish Natural Oil (b)	25.1	15oz	3.24	3.32	3.36	3.44	3.41	3.41
Bread	22.3	loaf	1.91	1.90	1.91	1.74	1.74	1.74
Canned fish Tomato Sauce (b)	22.1	15oz	2.68	2.74	2.74	2.84	2.84	3.00
Taamu	18.9	lb	1.25	1.28	1.10	1.29	1.93	1.40
Sugar Brown	18.7	lb	1.36	1.30	1.30	1.26	1.26	1.27
Fish (piece)	14.5	lb	6.52	6.89	7.60	6.82	8.56	7.68
Canned Beef (b)	13.7	12oz	13.05	13.05	13.20	12.85	12.83	12.79
Mineral Water	12.4	500mls	1.85	1.85	1.85	2.00	2.00	2.00
Chicken Wings (a)	12.0	lb	3.98	3.68	3.68	3.73	3.35	3.38
Fish (string)	11.7	lb	4.04	4.88	3.93	4.13	4.63	4.49
Koko Samoa	11.5	sml cup	5.43	5.00	5.00	5.29	5.29	5.29
Biscuits Sky Flakes (a)	11.0	850g	14.00	14.10	14.15	14.10	14.10	14.10
Bananas	10.5	lb	0.33	0.29	0.31	0.40	0.36	0.35
Fish (large)	10.2	lb	6.03	8.29	8.40	7.56	9.62	8.40
Milk unskimmed UHT (b)	9.9	ltr	4.23	4.13	4.07	4.20	4.08	4.08
Butter Anchor	9.4	lb	10.73	10.73	10.73	11.08	11.08	11.08
Soft Drink Coke	9.2	750mls	3.57	3.54	3.54	3.59	3.59	3.59
Ramen Maggie	8.8	85g	1.04	1.06	1.08	1.12	1.08	1.08
Flour	6.8	lb	1.14	1.11	1.11	1.11	1.05	1.10
Yam	6.3	lb	1.40	1.70	1.64	1.28	1.78	1.75
Oil Cooking oil (a)	5.8	500mls	6.65	6.88	6.65	6.60	6.60	6.60
Taro Leaves	5.5	lb	2.71	2.21	2.57	3.18	2.59	2.53
Coconuts	5.1	lb	0.36	0.38	0.32	0.30	0.29	0.27
Chinese Cabbage	5.0	lb	1.51	1.35	3.63	1.80	1.94	2.74
Salted Beef	4.9	lb	5.88	5.92	5.92	6.15	6.15	6.01
Eggs	4.3	doz	5.93	5.93	5.93	5.73	5.73	5.59
Stewing beef	4.3	lb	5.58	5.58	5.58	5.68	5.80	5.80
Breadfruit	4.2	lb	0.55	0.52	0.30	0.55	0.70	0.48
<b><i>Alcoholic Beverages and Tobacco</i></b>								
Cigarettes (b)	41.70	20rolls	9.00	9.00	9.00	9.43	9.43	9.86
Beer Vailima	32.3	355mls	4.53	4.53	4.53	4.54	4.54	4.54
Spirit Volka nip	6.3	nip	10.00	10.33	10.33	10.33	10.00	10.00
Spirit whisky nip	6.3	nip	10.00	10.33	10.33	10.33	10.00	10.00
<b><i>Clothing and Footwear</i></b>								
School Uniform	5.4	each	29.00	29.00	29.00	34.00	34.00	29.00
Ie Solosolo	2.1	2yds	7.62	7.62	7.55	7.67	7.67	7.67
Jandals soft rubber	2.1	10.5	8.35	8.35	8.18	8.18	8.18	8.18
Jandals hard rubber	1.6	8	3.75	3.75	3.50	3.25	3.25	3.25
<b><i>Housing, Water, Electricity, Gas and other Fuels</i></b>								
Electricity	56.9	kwh	1.02	1.02	1.02	1.05	1.05	1.05
Roofing iron	5.2	12ft	52.80	52.40	52.40	53.60	53.60	53.60
Cement	4.4	40kg	22.75	22.88	22.88	23.50	23.63	23.38
Natural gas	3.5	20lb	79.30	77.25	75.45	75.45	75.45	75.45
Kerosene	2.1	ltr	2.93	2.87	2.94	2.84	2.68	2.65
<b><i>Furnishings, Household Equipment and Routine Household Maintenance</i></b>								
Washing powder (b)	6.00	200g	1.71	1.66	1.66	1.55	1.55	1.55
Washing soap	4.3	bar	2.88	2.88	2.90	2.93	2.93	2.93
Refridgerator	3.7	331ltrs	2900.00	2900.00	2900.00	2900.00	2900.00	2900.00
Sheeting material	3.3	yd	12.95	12.95	12.95	12.95	12.95	12.95
Sefe 3 sheves (a)	2.7	48*48	515.00	515.00	515.00	515.00	515.00	515.00
Kerosene stove 2 burners	2.0	each	154.67	154.67	144.33	144.33	141.67	141.67
Mosquito coil	2.0	box	1.26	1.26	1.26	1.26	1.28	1.28

Commodities	Weight	Unit	2013		2014		2015	
			Nov	Dec	Jan	Nov	Dec	Jan (P)
<b>Health</b>								
Paracetamol	3.7	20tablet	1.88	1.75	1.75	1.80	1.80	1.88
Magnesium Trisillicate	3.6	120mls	7.30	7.30	7.30	7.60	7.60	7.60
Cough Mixture	3.6	100mls	9.95	9.20	9.40	9.85	9.90	9.40
Hospital Charge	2.1	per night	5.00	5.00	10.00	10.00	10.00	10.00
<b>Transport</b>								
Petrol	39.1	ltr	3.04	2.96	3.04	3.06	2.90	2.78
Labour charge car repair	9.1	min crg	51.67	51.67	51.67	51.67	51.67	51.67
Air Fares Apia-Auckland-Apia	7.8	return	1121.10	1551.85	2162.06	1739.50	1206.61	2449.35
Air Fares Fagalii-Pago	7.8	return	380.00	365.00	365.00	395.00	370.00	395.00
Bus Fares Apia-Motootua Hosp	3.7	per trip	0.80	0.80	0.80	1.30	1.30	1.30
Bus Fares Apia-Malua	3.7	per trip	2.00	2.00	2.00	2.60	2.60	2.60
Bus Fares Apia-Falefa	3.7	per trip	3.20	3.20	3.20	3.70	3.70	3.70
Car Tyre 205/70R(14)	3.7	size 14	220.00	220.00	215.00	215.00	220.00	220.00
Taxi Fares PO-Motootua Hosp	3.3	per trip	3.50	3.50	3.50	4.80	4.80	4.80
Taxi Fares Po-Malua	3.3	per trip	26.10	26.10	26.10	31.30	31.30	31.30
Taxi Fares PO-Falefa	3.3	per trip	36.00	36.00	36.00	43.20	43.20	43.20
Diesel	2.8	ltr	3.15	3.12	3.18	3.06	2.89	2.83
Car Registration 1500-2000 cc	2.0	ann rate	290.00	290.00	290.00	290.00	290.00	352.00
Boat Fares Mulifanua-Salelologa	1.3	one way	12.00	12.00	12.00	12.00	12.00	12.00
<b>Communication</b>								
Telephone local call	23.6	1 min	0.06	0.06	0.06	0.06	0.06	0.06
Telephone NZ call	10.6	3 mins	2.55	2.55	2.55	2.55	2.55	2.55
Telephone USA call	10.6	3 mins	5.37	5.37	5.37	5.35	5.35	5.35
Telephone Rental	10.6	monthly	24.15	24.15	24.15	24.15	24.15	24.15
Internet Prepaid Rates (a)	2.6	30 mins	5.10	5.10	5.10	5.10	5.10	5.10
PO Box rental (small box)	0.2	ann rate	80.00	80.00	80.00	80.00	80.00	80.00
<b>Recreation and Culture</b>								
National Lotto (a)	23.6	ticket	7.00	7.00	7.00	7.00	7.00	7.00
Tattslotto	3.8	ticket	13.50	13.50	13.50	13.50	13.50	13.50
News Paper Samoa Observer	2.7	each	2.50	2.50	2.50	2.50	2.50	2.50
<b>Education</b>								
School Fees Primary	10.5	Yr 4	10.00	10.00	10.00	10.00	10.00	10.00
School Fees Secondary	8.1	Yr 10	50.00	50.00	50.00	50.00	50.00	50.00
School Fees Primary	7.6	Yr 8	20.00	20.00	20.00	20.00	20.00	20.00
School Fees (NUS registration)	5.1	tertiary	265.00	265.00	265.00	265.00	265.00	292.00
<b>Restaurants</b>								
Meal (Fish & Chips)	11.0	1 serve	9.00	9.00	9.00	9.00	9.00	9.00
Meal (Pinati)	3.7	1 serve	3.00	3.00	3.00	3.00	3.00	3.00
<b>Miscellaneous goods and services</b>								
Toilet soap	7.6	90g	1.13	1.10	1.13	1.04	1.04	1.04
Diapers (16kg & over )	7.2	24pkt	37.78	37.78	37.40	37.80	37.80	37.80
Toilet Paper	3.6	roll	0.90	0.90	0.90	0.90	0.90	0.90

Source : Samoa Bureau Statistics

(a) : New commodity from August 2010

(b) : Average price across all brands

(P) : Provisional figures

     Revised Figure

**Table 3. IMPORTED GOODS COMPONENT OF THE CONSUMER PRICE INDEX**  
(Base Period : Average Prices August 2010 = 100)

Group	All Items	Food and Non Alcoholic Beverages	Alcoholic Beverages and Tobacco	Clothing and Footwear	Housing,Water, Electricity, Gas and other Fuels	Furnishings, Household Equipment and Maintenance	Health	Transport	Communication	Recreation and Culture	Education	Restaurants	Miscellaneous goods and services
<b>Weights</b>	<b>424.8</b>	<b>272.0</b>	<b>17.1</b>	<b>10.9</b>	<b>17.5</b>	<b>22.7</b>	<b>12.8</b>	<b>46.8</b>	<b>n.a.</b>	<b>1.3</b>	<b>n.a.</b>	<b>n.a.</b>	<b>23.7</b>
Ave - 2012	106.7	105.7	113.9	110.6	103.8	102.1	95.1	118.6		76.7			100.9
Ave - 2013	106.9	106.2	112.1	110.9	101.7	103.0	95.2	119.7		77.0			100.7
Ave - 2014	108.2	108.2	113.4	110.0	101.7	102.3	94.0	120.8		78.2			98.4
2014													
January	107.7	107.6	115.2	109.2	101.2	102.4	92.1	119.3		77.0			100.0
February	107.9	106.8	115.2	111.1	102.0	102.9	92.1	124.2		77.0			100.0
March	107.6	107.1	115.2	110.4	101.2	102.7	92.1	121.3		77.0			100.0
April	106.9	106.7	106.0	111.1	101.2	100.8	92.1	121.6		78.9			98.5
May	106.6	106.6	106.0	110.1	100.8	101.9	92.1	118.7		78.9			99.0
June	108.3	108.9	115.2	109.8	100.3	102.0	92.1	118.4		78.9			98.2
July	109.0	109.2	115.2	109.8	101.8	101.9	93.6	121.9		78.9			98.5
August	109.6	110.0	115.2	109.6	101.8	101.9	95.0	122.8		78.9			98.5
September	109.4	109.3	115.2	109.6	102.1	102.8	96.7	124.1		78.9			98.5
October	109.0	108.9	115.2	109.7	102.6	102.8	96.6	122.9		78.1			96.4
November	108.4	108.6	115.2	109.6	102.7	102.5	96.6	119.7		78.1			96.3
December	107.3	108.1	112.2	109.6	102.0	102.5	96.7	114.2		78.1			96.3
2015													
January (P)	107.3	108.8	112.2	109.5	101.9	102.7	96.4	110.1		78.1			96.1
<b>Percentage Change (P)</b>													
Jan 2015 over Dec 2014	0.0	0.6	0.0	-0.1	-0.1	0.2	-0.3	-3.6		0.0			-0.2
Jan 2015 over Jan 2014	-0.4	1.1	-2.7	0.4	0.6	0.3	4.6	-7.7		1.4			-3.9
<b>IMPORTED ITEMS UNDERLYING INDEX</b>													
Group	All Items	Food and Non Alcoholic Beverages	Alcoholic Beverages and Tobacco	Clothing and Footwear	Housing,Water, Electricity, Gas and other Fuels	Furnishings, Household Equipment and Maintenance	Health	Transport	Communication	Recreation and Culture	Education	Restaurants	Miscellaneous goods and services
<b>Weights</b>	<b>362.8</b>	<b>272.0</b>	<b>n.a.</b>	<b>10.9</b>	<b>15.4</b>	<b>22.7</b>	<b>12.8</b>	<b>4.0</b>	<b>n.a.</b>	<b>1.3</b>	<b>n.a.</b>	<b>n.a.</b>	<b>23.7</b>
Ave - 2012	104.9	105.7		110.6	101.4	102.1	95.1	122.0		76.7			100.9
Ave - 2013	105.0	106.2		110.9	98.9	103.0	95.2	113.2		77.0			100.7
Ave - 2014	106.2	108.2		110.0	98.7	102.3	94.0	107.4		78.2			98.4
2014													
January	105.8	107.6		109.2	97.9	102.4	92.1	107.2		77.0			100.0
February	105.3	106.8		111.1	97.9	102.9	92.1	107.2		77.0			100.0
March	105.4	107.1		110.4	97.9	102.7	92.1	107.2		77.0			100.0
April	105.0	106.7		111.1	97.9	100.8	92.1	107.1		78.9			98.5
May	105.0	106.6		110.1	98.1	101.9	92.1	107.2		78.9			99.0
June	106.6	108.9		109.8	97.8	102.0	92.1	107.2		78.9			98.2
July	106.9	109.2		109.8	98.9	101.9	93.6	107.2		78.9			98.5
August	107.6	110.0		109.6	98.9	101.9	95.0	107.2		78.9			98.5
September	107.2	109.3		109.6	99.1	102.8	96.7	107.1		78.9			98.5
October	106.8	108.9		109.7	99.6	102.8	96.6	107.2		78.1			96.4
November	106.6	108.6		109.6	100.2	102.5	96.6	107.1		78.1			96.3
December	106.2	108.1		109.6	100.3	102.5	96.7	109.6		78.1			96.3
2015													
January (P)	106.7	108.8		109.5	100.3	102.7	96.4	109.6		78.1			96.1
<b>Percentage Change (P)</b>													
Jan 2015 over Dec 2014	0.5	0.6		-0.1	0.0	0.2	-0.3	0.0		0.0			-0.2
Jan 2015 over Jan 2014	0.9	1.1		0.4	2.5	0.3	4.6	2.3		1.4			-3.9

Source : Samoa Bureau Statistics

(P): Provisional figures

Note: n.a. Not applicable

Revised Figure

**Table 4. LOCAL GOODS COMPONENT OF THE CONSUMER PRICE INDEX**  
(Base Period : Average Prices August 2010 = 100)

Group	All Items	Food and Non Alcoholic Beverages	Alcoholic Beverages and Tobacco	Clothing and Footwear	Housing, Water, Electricity, Gas and other Fuels	Furnishings, Household Equipment and Maintenance	Health	Transport	Communication	Recreation and Culture	Education	Restaurants	Miscellaneous goods and services
<b>Weights</b>	<b>575.2</b>	<b>229.8</b>	<b>79.6</b>	<b>6.4</b>	<b>60.6</b>	<b>8.6</b>	<b>3.0</b>	<b>50.3</b>	<b>58.2</b>	<b>32.7</b>	<b>31.3</b>	<b>14.7</b>	<b>n.a.</b>
Ave - 2012	108.8	115.8	106.5	117.3	110.3	95.9	100.0	104.2	100.0	98.8	101.6	100.0	
Ave - 2013	109.8	116.9	110.5	117.9	108.8	97.1	100.0	104.4	100.0	99.4	101.6	101.6	
Ave - 2014	108.1	106.4	114.4	131.1	113.4	94.6	170.0	113.9	100.0	99.8	101.6	109.4	
2014													
January	106.8	106.0	111.7	117.9	110.4	94.5	170.0	110.2	100.0	99.8	101.6	109.4	
February	105.9	103.5	114.1	117.9	110.4	94.5	170.0	107.7	100.0	99.8	101.6	109.4	
March	108.9	112.1	114.5	117.9	110.4	94.5	170.0	102.0	100.0	99.8	101.6	109.4	
April	107.3	106.7	114.7	135.5	110.4	94.5	170.0	106.3	100.0	99.8	101.6	109.4	
May	108.0	104.4	114.7	135.5	113.5	94.5	170.0	121.0	100.0	99.8	101.6	109.4	
June	107.8	104.0	114.7	135.5	113.5	94.5	170.0	120.5	100.0	99.8	101.6	109.4	
July	106.6	100.8	114.7	135.5	113.5	94.5	170.0	120.7	100.0	99.8	101.6	109.4	
August	105.7	99.8	114.7	135.5	113.5	94.5	170.0	114.9	100.0	99.8	101.6	109.4	
September	105.7	99.6	114.7	135.5	116.2	94.5	170.0	112.3	100.0	99.8	101.6	109.4	
October	109.2	106.9	114.7	135.5	116.2	95.0	170.0	119.7	100.0	99.8	101.6	109.4	
November	109.7	107.8	114.7	135.5	116.2	95.0	170.0	120.4	100.0	99.8	101.6	109.4	
December	115.6	124.6	114.7	135.5	116.2	95.0	170.0	111.5	100.0	99.8	101.6	109.4	
2015													
January (P)	114.4	117.0	117.5	117.9	116.2	95.0	170.0	129.0	100.0	99.8	103.4	109.4	
<b>Percentage Change (P)</b>													
Jan 2015 over Dec 2014	-1.1	-6.1	2.4	-13.0	0.0	0.0	0.0	15.8	0.0	0.0	1.8	0.0	
Jan 2015 over Jan 2014	7.1	10.3	5.2	0.0	5.2	0.5	0.0	17.1	-0.1	0.0	1.8	0.0	
<b>LOCAL ITEMS UNDERLYING INDEX</b>													
Group	All Items	Food and Non Alcoholic Beverages	Alcoholic Beverages and Tobacco	Clothing and Footwear	Housing, Water, Electricity, Gas and other Fuels	Furnishings, Household Equipment and Maintenance	Health	Transport	Communication	Recreation and Culture	Education	Restaurants	Miscellaneous goods and services
<b>Weights</b>	<b>117.4</b>	<b>75.5</b>	<b>n.a.</b>	<b>6.4</b>	<b>1.2</b>	<b>8.6</b>	<b>0.9</b>	<b>9.1</b>	<b>n.a.</b>	<b>1.0</b>	<b>n.a.</b>	<b>14.7</b>	<b>n.a.</b>
Ave - 2012	102.5	103.9		117.3	105.2	95.9	100.0	90.5		100.0		100.0	
Ave - 2013	103.8	105.5		117.9	105.9	97.1	100.0	90.5		100.0		101.6	
Ave - 2014	105.0	104.8		131.1	111.5	94.6	100.0	90.5		100.0		109.4	
2014													
January	104.3	104.3		117.9	110.6	94.5	100.0	90.5		100.0		109.4	
February	104.3	104.3		117.9	111.6	94.5	100.0	90.5		100.0		109.4	
March	103.9	103.9		117.9	111.6	94.5	100.0	90.5		100.0		109.4	
April	105.3	105.3		135.5	111.6	94.5	100.0	90.5		100.0		109.4	
May	105.2	105.2		135.5	111.6	94.5	100.0	90.5		100.0		109.4	
June	105.7	105.7		135.5	111.6	94.5	100.0	90.5		100.0		109.4	
July	105.5	105.5		135.5	111.6	94.5	100.0	90.5		100.0		109.4	
August	105.7	105.7		135.5	111.6	94.5	100.0	90.5		100.0		109.4	
September	105.6	105.6		135.5	111.6	94.5	100.0	90.5		100.0		109.4	
October	104.5	104.5		135.5	111.6	95.0	100.0	90.5		100.0		109.4	
November	104.8	104.8		135.5	111.5	95.0	100.0	90.5		100.0		109.4	
December	104.7	104.7		135.5	111.5	95.0	100.0	90.5		100.0		109.4	
2015													
January (P)	103.5	103.5		117.9	111.5	95.0	100.0	90.5		100.0		109.4	
<b>Percentage Change (P)</b>													
Jan 2015 over Dec 2014	-1.1	-1.1		-13.0	0.0	0.0	0.0	0.0		0.0		0.0	
Jan 2015 over Jan 2014	-0.8	-0.8		0.0	0.8	0.5	0.0	0.0		0.0		0.0	

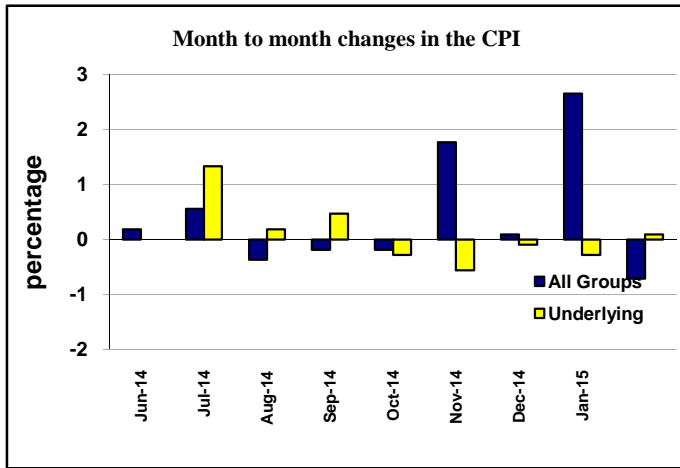
Source : Samoa Bureau Statistics

(P): Provisional figures

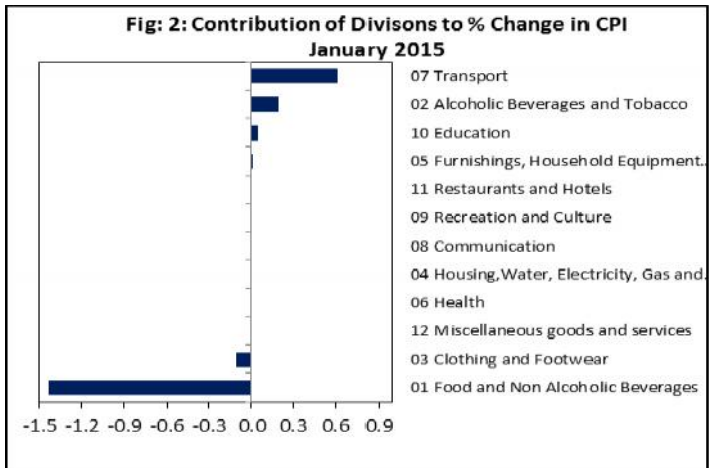
Note: n.a. Not applicable



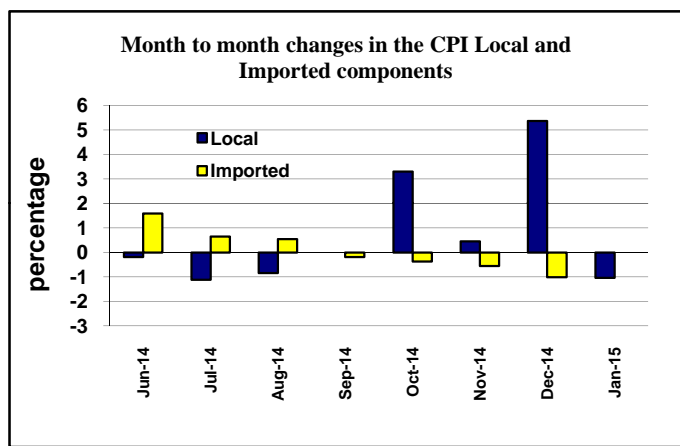
Graph.1



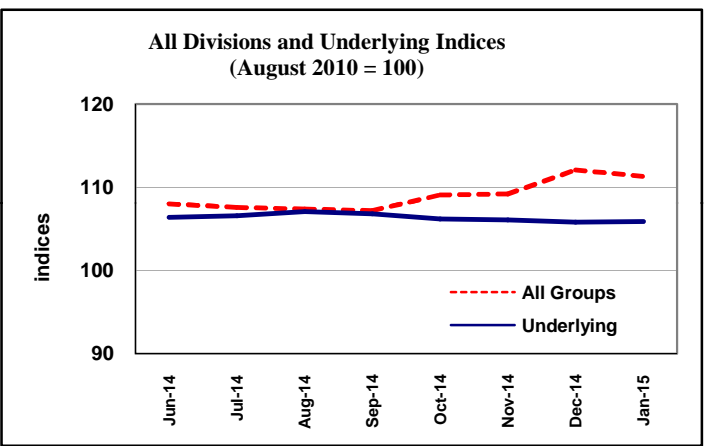
Graph.2



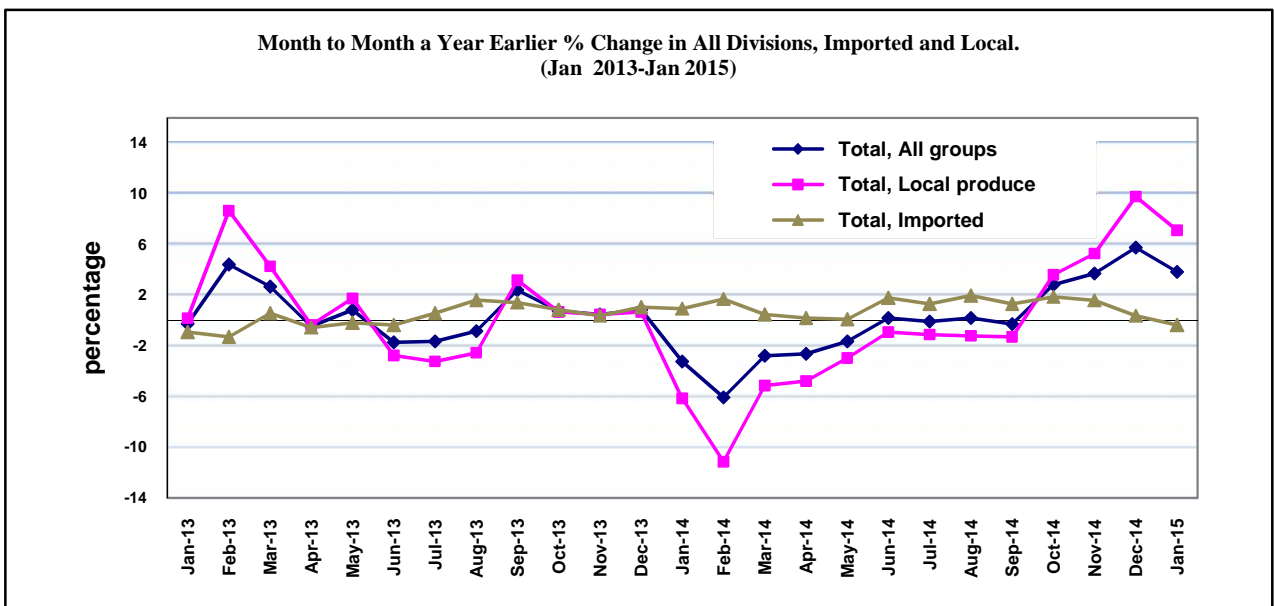
Graph.3



Graph.4



Graph 5



Source: Samoa Bureau of Statistics