

Please address all correspondence
To Government Statistician

In reply, please quote the file reference



GOVERNMENT OF SAMOA

File Ref: CPI 09/14

SAMOA BUREAU OF STATISTICS

CONSUMER PRICE INDEX September 2014

Key findings:

The Consumer Price Index for September 2014 decreased marginally by 0.2 percent compared to the previous month.

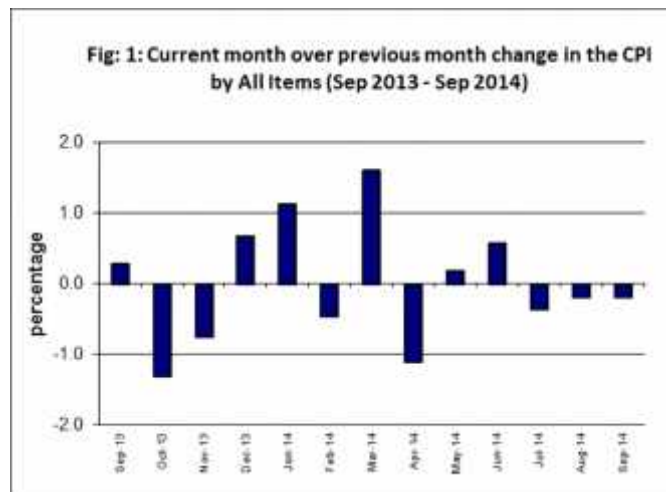
- The Food and Non Alcoholic Beverages index decreased by 0.5 percent.
- Housing, Water, Electricity, Gas and other Fuels index increased by 1.9 percent.
- Health index also increased by 1.3 percent.
- The Average Annual Inflation for the year ended September 2014 negative 1.2 percent.

The CPI fell 0.3 percent from September 2013.

SUMMARY

The Consumer Price Index for September 2014 was 0.2 percent lower than in August 2014 and was 0.3 percent lower than September 2013.

The Imported Goods Component registered a decrease of 0.2 percent, while Local Component recorded no change from the previous month. Figure 1 shows the month to month percentage changes in the Consumer Price Index by all Divisions from September 2013 to September 2014.

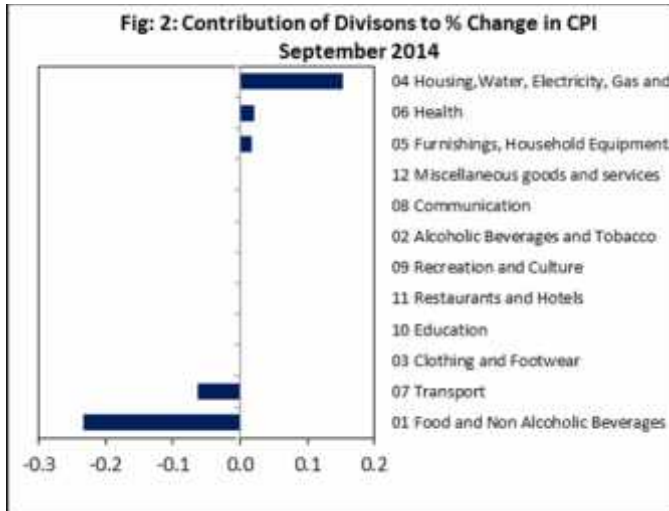


Source : Samoa Bureau of Statistics

Total All Divisions Contribution

Food and Non Alcoholic Beverages divisions along with Transport were the main contributors to the overall decrease of 0.2 percent in the All Division Consumer Price Index.

On the other hand there was offsetting contributions from Housing, Water, Electricity, Gas and other Fuels division with 0.2 percent increase.



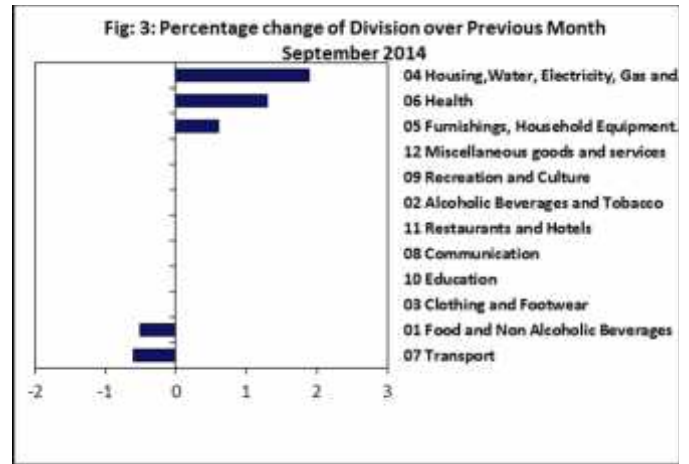
Source : Samoa Bureau of Statistics

Consumer Price Index (% Change)

The Food and Non Alcoholic Beverages and Transport indices showed decreases of 0.5 and 0.6 percent respectively.

On the other hand, increases were recorded for the Housing, Water, Electricity, Gas and other Fuels index with 1.9 percent, Health index with 1.3 percent and Furnishing, Household Equipment and Maintenance index with 0.6 percent.

No changes were recorded for the Alcoholic Beverages, Clothing and Footwear, Communication, Recreation and Culture, Education, Restaurants and Miscellaneous Goods and Services indices. Graphically presented in Fig 3 is the September 2014 percentage change for all divisions from August 2014.



Source : Samoa Bureau of Statistics

Imported Goods Component

The Imported Goods Component of the Consumer Price Index registered a decrease of 0.2 percent when compared to the previous month. This decrease was mainly due to lower prices recorded for mutton flap and chicken wings.

Food and Non Alcoholic Beverages Index

Lower prices recorded for mutton flap, chicken wings, fresh fish (large, string and piece), breadfruit, and pumpkin was reflected in the 0.5 percent decrease in the Food and Non Alcoholic Beverages index.



Transport Index

Decreased prices recorded for airline fares (Apia-Auckland-Apia) have resulted in the 0.6 percent decrease in the Transport Index.

Housing, Water, Electricity, Gas and other Fuels Index

An increase of 1.9 percent in the Housing, Water, Electricity, Gas and other Fuels index was mainly due to higher prices recorded for monthly rent (two bedroom house).

Health Index

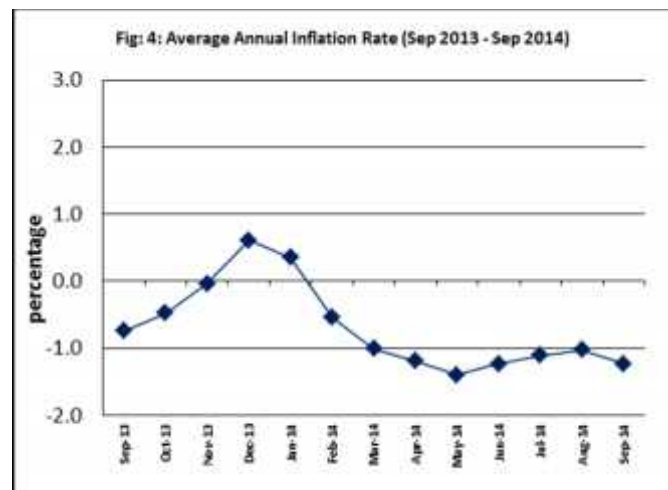
The 1.3 percent increase in the Health index is resulted in the higher prices recorded for magnesium trisilicate.

Underlying Indices ^{1/}

The All Items Underlying Index for September 2014 registered a decrease of 0.3 percent when compared to August 2014, and an increase of 1.5 percent when compared to September 2013. The Imported Items Underlying Index registered a decrease of 0.4 percent while the Local Items Underlying Index is also reported a 0.1 percent decrease.

Average Annual Inflation Rate

The average annual inflation rate for the year ended September 2014 was negative 1.2 percent. For the twelve months ending September 2013 the inflation rate was also negative 0.7 percent. Presented in Fig 4 is the Average annual inflation rate (September 2013 - September 2014).



Source : Samoa Bureau of Statistics

The attached Tables and Graphs provide the user with more detailed analysis.



Date of release: 10th September 2014

The next Consumer Price Index will be released on 12th November 2014

^{1/}Underlying inflation is measure of inflation that excludes certain items that face volatile price movements. Underlying inflation eliminates products that can have temporary price shocks because these shocks can diverge from the overall trend of inflation and give a false measure of inflation.

Underlying inflation can also exclude government charges as they change rarely and are not set by an open market and so may also give a false measure of inflation. Prices that are subject to price control or subsidy could also be removed for the same reasons.

Table 1. CONSUMER PRICE INDEX.
(Base Period : Average Prices August 2010 = 100)

Group	All Items	Food and Non Alcoholic Beverages	Alcoholic Beverages and Tobacco	Clothing and Footwear	Housing, Water, Electricity, Gas and other Fuels	Furnishings, Household Equipment, and Maintenance	Health	Transport	Communication	Recreation and Culture	Education	Restaurants	Miscellaneous goods and services
<i>Weights</i>	1000	502	97	17	78	31	16	97	58	34	31	15	24
Ave - 2011	105.7	108.2	105.0	103.9	106.5	100.5	98.7	106.6	100.0	98.1	100.0	100.0	100.3
Ave - 2012	107.9	110.3	107.8	113.1	108.9	100.4	96.0	111.2	100.0	98.0	101.6	100.0	100.9
Ave - 2013	108.6	111.1	110.8	113.5	107.2	101.4	96.1	111.8	100.0	98.5	101.6	101.6	100.7
2013													
September	107.5	107.7	111.7	112.7	108.5	101.1	96.1	116.5	100.0	98.9	101.6	100.0	100.7
October	106.1	105.9	111.7	114.4	108.7	100.9	96.1	110.7	100.0	98.9	101.6	100.0	101.6
November	105.3	104.6	111.7	114.5	108.6	101.0	96.1	108.3	100.0	98.9	101.6	109.4	100.4
December	106.0	105.8	112.3	113.8	108.4	100.5	93.2	109.4	100.0	98.9	101.6	109.4	99.4
2014													
January	107.2	106.9	112.3	112.4	108.4	100.2	106.9	114.6	100.0	98.9	101.6	109.4	100.0
February	106.7	105.3	114.3	113.7	108.5	100.6	106.9	115.7	100.0	98.9	101.6	109.4	100.0
March	108.4	109.4	114.6	113.2	108.4	100.5	106.9	111.3	100.0	98.9	101.6	109.4	100.0
April	107.2	106.7	113.2	120.1	108.4	99.1	106.9	113.7	100.0	99.0	101.6	109.4	98.5
May	107.4	105.6	113.2	119.5	110.7	99.9	106.9	119.9	100.0	99.0	101.6	109.4	99.0
June	108.0	106.6	114.8	119.3	110.5	99.9	106.9	119.5	100.0	99.0	101.6	109.4	98.2
July	107.6	105.3	114.8	119.3	110.9	99.9	108.1	121.2	100.0	99.0	101.6	109.4	98.5
August	107.4	105.3	114.8	119.2	110.9	99.9	109.2	118.7	100.0	99.0	101.6	109.4	98.5
September (P)	107.2	104.8	114.8	119.2	113.0	100.5	110.6	118.0	100.0	99.0	101.6	109.4	98.5
Percentage Change (P)													
Sept 2014 over Aug 2014	-0.2	-0.5	0.0	0.0	1.9	0.6	1.3	-0.6	0.0	0.0	0.0	0.0	0.0
Sept 2014 over Sept 2013	-0.3	-2.7	2.8	5.8	4.1	-0.6	15.1	1.3	0.0	0.1	0.0	9.4	-2.2
ALL ITEMS UNDERLYING INDEX													
Group	All Items	Food and Non Alcoholic Beverages	Alcoholic Beverages and Tobacco	Clothing and Footwear	Housing, Water, Electricity, Gas and other Fuels	Furnishings, Household Equipment, and Maintenance	Health	Transport	Communication	Recreation and Culture	Education	Restaurants	Miscellaneous goods and services
<i>Weights</i>	480	348	<i>n.a.</i>	17	17	31	14	13	<i>n.a.</i>	2	<i>n.a.</i>	15	24
Ave - 2011	103.4	104.8		103.9	99.8	100.5	98.5	94.9		89.3		100.0	100.3
Ave - 2012	104.3	105.3		113.1	101.7	100.4	95.4	100.1		86.8		100.0	100.9
Ave - 2013	104.7	106.0		113.5	99.4	101.4	95.5	97.4		87.0		101.6	100.7
2013													
September	105.2	106.8		112.7	99.5	101.1	95.5	96.4		87.0		100.0	100.7
October	104.5	105.7		114.4	100.1	100.9	95.5	96.4		87.0		100.0	101.6
November	104.7	105.6		114.5	100.1	101.0	95.5	96.4		87.0		109.4	100.4
December	104.9	106.2		113.8	99.4	100.5	92.1	96.4		87.0		109.4	99.4
2014													
January	105.4	107.0		112.4	98.8	100.2	92.7	95.6		87.0		109.4	100.0
February	105.0	106.4		113.7	98.9	100.6	92.7	95.6		87.0		109.4	100.0
March	105.1	106.5		113.2	98.9	100.5	92.7	95.6		87.0		109.4	100.0
April	105.0	106.3		120.1	98.9	99.1	92.7	95.6		88.1		109.4	98.5
May	105.0	106.2		119.5	99.1	99.9	92.7	95.6		88.1		109.4	99.0
June	106.4	108.2		119.3	98.8	99.9	92.7	95.6		88.1		109.4	98.2
July	106.6	108.3		119.3	99.8	99.9	94.0	95.6		88.1		109.4	98.5
August	107.1	109.0		119.2	99.8	99.9	95.3	95.6		88.1		109.4	98.5
September (P)	106.8	108.4		119.2	100.0	100.5	96.9	95.6		88.1		109.4	98.5
Percentage Change (P)													
Sept 2014 over Aug 2014	-0.3	-0.6		0.0	0.2	0.6	1.7	0.0		0.0		0.0	0.0
Sept 2014 over Sept 2013	1.5	1.5		5.8	0.5	-0.6	1.5	-0.8		1.2		9.4	-2.1

Source : Samoa Bureau Statistics
(P) : Provisional figures
Note: n.a. Not applicable

Table 2. AVERAGE RETAIL PRICES OF SELECTED COMMODITIES

Commodities	Weight	Unit	2013			2014	
			Jul	Aug	Sep	Jul	Aug
<i>Food and Non Alcoholic Beverages</i>							
Chicken Leg Quarters	41.8	lb	2.06	2.04	2.00	1.91	1.95
Taro	41.2	lb	0.92	0.90	0.86	0.65	0.71
Rice short grain	26.5	lb	1.51	1.52	1.53	1.66	1.67
Mutton (Pure Flap)	25.5	lb	7.07	7.26	7.67	8.91	8.94
Canned fish Natural Oil (b)	25.1	15oz	3.36	3.56	3.56	3.25	3.48
Bread	22.3	loaf	1.91	1.91	1.91	1.83	1.83
Canned fish Tomato Sauce (b)	22.1	15oz	3.01	2.68	2.68	2.75	2.75
Taamu	18.9	lb	1.19	1.15	1.05	1.04	1.07
Sugar Brown	18.7	lb	1.43	1.32	1.35	1.34	1.30
Fish (piece)	14.5	lb	5.79	6.36	6.43	4.96	6.28
Canned Beef (b)	13.7	12oz	12.71	12.88	12.83	12.95	12.91
Mineral Water	12.4	500mls	1.87	1.85	1.85	2.00	2.00
Chicken Wings (a)	12.0	lb	4.23	4.07	4.07	4.15	4.15
Fish (string)	11.7	lb	4.41	4.48	4.71	4.18	4.28
Koko Samoa	11.5	sml cup	4.86	5.14	5.29	5.14	5.14
Biscuits Sky Flakes (a)	11.0	850g	13.58	13.58	13.83	14.40	14.10
Bananas	10.5	lb	0.58	0.57	0.49	0.32	0.33
Fish (large)	10.2	lb	7.86	6.51	7.57	7.74	7.52
Milk unskimmed UHT (b)	9.9	ltr	4.17	4.21	4.20	4.28	4.22
Butter Anchor	9.4	lb	10.83	10.83	10.83	10.92	10.92
Soft Drink Coke	9.2	750mls	3.80	3.80	3.74	3.54	3.54
Ramen Maggie	8.8	85g	1.04	1.04	1.04	1.08	1.12
Flour	6.8	lb	1.16	1.18	1.17	1.17	1.17
Yam	6.3	lb	1.91	1.43	1.39	1.14	1.27
Oil Cooking oil (a)	5.8	500mls	6.90	6.90	6.83	6.65	6.65
Taro Leaves	5.5	lb	2.69	2.58	2.67	2.23	2.51
Coconuts	5.1	lb	0.36	0.37	0.35	0.31	0.29
Chinese Cabbage	5.0	lb	1.92	1.05	1.13	1.73	1.23
Salted Beef	4.9	lb	5.60	5.80	5.90	5.92	5.92
Eggs	4.3	doz	5.96	5.96	5.96	5.87	5.87
Stewing beef	4.3	lb	5.64	5.64	5.62	5.58	5.78
Breadfruit	4.2	lb	0.27	0.60	0.65	0.52	0.30
<i>Alcoholic Beverages and Tobacco</i>							
Cigarettes (b)	41.70	20rolls	9.00	9.00	9.00	9.43	9.43
Beer Vailima	32.3	355mls	4.53	4.53	4.53	4.54	4.54
Spirit Volka nip	6.3	nip	10.00	10.00	10.00	10.33	10.33
Spirit whisky nip	6.3	nip	10.00	10.00	10.00	10.33	10.33
<i>Clothing and Footwear</i>							
School Uniform	5.4	each	29.00	29.00	29.00	34.00	34.00
le Solosolo	2.1	2yds	7.48	7.48	7.48	7.67	7.67
Jandals soft rubber	2.1	10.5	7.98	7.98	7.98	8.18	8.18
Jandals hard rubber	1.6	8	3.75	3.75	3.75	3.25	3.25
<i>Housing, Water, Electricity, Gas and other Fuels</i>							
Electricity	56.9	kwh	1.00	1.00	1.02	1.05	1.05
Roofing iron	5.2	12ft	54.40	54.40	52.00	53.47	53.60
Cement	4.4	40kg	22.63	22.88	22.75	22.88	22.88
Natural gas	3.5	20lb	79.30	79.30	79.30	75.45	75.45
Kerosene	2.1	ltr	2.86	2.93	2.92	2.88	2.88
<i>Furnishings, Household Equipment and Routine Household Maintenance</i>							
Washing powder (b)	6.00	200g	1.79	1.79	1.79	1.49	1.49
Washing soap	4.3	bar	3.07	3.07	2.92	2.90	2.90
Refridgerator	3.7	331ltrs	2690.00	2690.00	2690.00	2900.00	2900.00
Sheeting material	3.3	yd	12.95	12.95	12.95	13.95	13.95
Sefe 3 sheves (a)	2.7	48*48	540.00	540.00	540.00	515.00	515.00
Kerosene stove 2 burners	2.0	each	154.67	154.67	154.67	144.33	144.33
Mosquito coil	2.0	box	1.26	1.26	1.26	1.26	1.26

Commodities	Weight	Unit	2013			2014	
			Jul	Aug	Sep	Jul	Aug
Health							
Paracetamol	3.7	20tablet	1.95	1.88	1.88	1.80	1.80
Magnesium Trisillicate	3.6	120mls	7.30	7.30	7.30	7.30	7.30
Cough Mixture	3.6	100mls	9.95	9.95	9.95	9.40	9.90
Hospital Charge	2.1	per night	5.00	5.00	5.00	10.00	10.00
Transport							
Petrol	39.1	ltr	3.08	3.16	3.17	3.12	3.15
Labour charge car repair	9.1	min crg	51.67	51.67	51.67	51.67	51.67
Air Fares Apia-Auckland-Apia	7.8	return	2014.00	1707.50	2111.15	1877.35	1368.00
Air Fares Fagalii-Pago	7.8	return	370.00	370.00	380.00	380.00	395.00
Bus Fares Apia-Motootua Hosp	3.7	per trip	0.80	0.80	0.80	1.30	1.30
Bus Fares Apia-Malua	3.7	per trip	2.00	2.00	2.00	2.60	2.60
Bus Fares Apia-Falefa	3.7	per trip	3.20	3.20	3.20	3.70	3.70
Car Tyre 205/70R(14)	3.7	size 14	220.00	220.00	220.00	215.00	215.00
Taxi Fares PO-Motootua Hosp	3.3	per trip	3.50	3.50	3.50	4.80	4.80
Taxi Fares Po-Malua	3.3	per trip	26.10	26.10	26.10	31.30	31.30
Taxi Fares PO-Falefa	3.3	per trip	36.00	36.00	36.00	43.20	43.20
Diesel	2.8	ltr	3.12	3.20	3.19	3.14	3.11
Car Registration 1500-2000 cc	2.0	ann rate	290.00	290.00	290.00	290.00	290.00
Boat Fares Mulifanua-Salelologa	1.3	one way	12.00	12.00	12.00	12.00	12.00
Communication							
Telephone local call	23.6	1 min	0.06	0.06	0.06	0.06	0.06
Telephone NZ call	10.6	3 mins	2.55	2.55	2.55	2.55	2.55
Telephone USA call	10.6	3 mins	5.37	5.37	5.37	5.35	5.35
Telephone Rental	10.6	monthly	24.15	24.15	24.15	24.15	24.15
Internet Prepaid Rates (a)	2.6	30 mins	5.10	5.10	5.10	5.10	5.10
PO Box rental (small box)	0.2	ann rate	80.00	80.00	80.00	80.00	80.00
Recreation and Culture							
National Lotto (a)	23.6	ticket	7.00	7.00	7.00	7.00	7.00
Tattslotto	3.8	ticket	13.50	13.50	13.50	13.50	13.50
News Paper Samoa Observer	2.7	each	2.50	2.50	2.50	2.50	2.50
Education							
School Fees Primary	10.5	Yr 4	10.00	10.00	10.00	10.00	10.00
School Fees Secondary	8.1	Yr 10	50.00	50.00	50.00	50.00	50.00
School Fees Primary	7.6	Yr 8	20.00	20.00	20.00	20.00	20.00
School Fees (NUS registration)	5.1	tertiary	265.00	265.00	265.00	265.00	265.00
Restaurants							
Meal (Fish & Chips)	11.0	1 serve	8.00	8.00	8.00	9.00	9.00
Meal (Pinati)	3.7	1 serve	3.00	3.00	3.00	3.00	3.00
Miscellaneous goods and services							
Toilet soap	7.6	90g	1.11	1.11	1.11	1.09	1.09
Diapers (16kg & over)	7.2	24pkt	37.80	37.80	37.80	37.73	37.80
Toilet Paper	3.6	roll	0.98	0.95	0.95	0.90	0.90

Source : Samoa Bureau Statistics

(a) : New commodity from August 2010

(b) : Average price across all brands

(P) : Provisional figures

Table 3. IMPORTED GOODS COMPONENT OF THE CONSUMER PRICE INDEX
(Base Period : Average Prices August 2010 = 100)

Group	All Items	Food and Non Alcoholic Beverages	Alcoholic Beverages and Tobacco	Clothing and Footwear	Housing, Water, Electricity, Gas and other Fuels	Furnishings, Household Equipment and Maintenance	Health	Transport	Communication	Recreation and Culture	Education	Restaurants	Miscellaneous goods and services
Weights	424.8	272.0	17.1	10.9	17.5	22.7	12.8	46.8	n.a.	1.3	n.a.	n.a.	23.7
Ave - 2011	105.5	105.6	112.9	102.5	101.2	101.1	98.4	111.6		81.1			100.3
Ave - 2012	106.7	105.7	113.9	110.6	103.8	102.1	95.1	118.6		76.7			100.9
Ave - 2013	106.9	106.2	112.1	110.9	101.7	103.0	95.2	119.7		77.0			100.7
2013													
September	108.0	107.1	111.9	109.6	102.0	102.9	95.2	123.9		77.0			100.7
October	107.0	106.0	111.9	112.3	102.7	102.7	95.2	120.9		77.0			101.6
November	106.7	105.8	111.5	112.5	102.4	103.5	95.2	119.4		77.0			100.4
December	106.9	106.7	115.2	111.4	101.4	103.0	91.6	116.7		77.0			99.4
2014													
January	107.7	107.6	115.2	109.2	101.2	102.4	92.1	119.3		77.0			100.0
February	107.9	106.8	115.2	111.1	102.0	102.9	92.1	124.2		77.0			100.0
March	107.6	107.1	115.2	110.4	101.2	102.7	92.1	121.3		77.0			100.0
April	106.9	106.7	106.0	111.1	101.2	100.8	92.1	121.6		78.9			98.5
May	106.6	106.6	106.0	110.1	100.8	101.9	92.1	118.7		78.9			99.0
June	108.3	108.9	115.2	109.8	100.3	102.0	92.1	118.4		78.9			98.2
July	109.0	109.2	115.2	109.8	101.8	101.9	93.6	121.9		78.9			98.5
August	109.6	110.0	115.2	109.6	101.8	101.9	95.0	122.8		78.9			98.5
September (P)	109.4	109.3	115.2	109.6	102.1	102.8	96.7	124.1		78.9			98.5
Percentage Change (P)													
Sep 2014 over Aug 2014	-0.2	-0.7	0.0	0.0	0.3	0.8	1.8	1.1		0.0			0.0
Sep 2014 over Sep 2013	1.4	2.0	3.0	0.0	0.1	-0.1	1.7	0.2		2.5			-2.1
IMPORTED ITEMS UNDERLYING INDEX													
Group	All Items	Food and Non Alcoholic Beverages	Alcoholic Beverages and Tobacco	Clothing and Footwear	Housing, Water, Electricity, Gas and other Fuels	Furnishings, Household Equipment and Maintenance	Health	Transport	Communication	Recreation and Culture	Education	Restaurants	Miscellaneous goods and services
Weights	362.8	272.0	n.a.	10.9	15.4	22.7	12.8	4.0	n.a.	1.3	n.a.	n.a.	23.7
Ave - 2011	104.3	105.6		102.5	99.4	101.1	98.4	109.2		81.1			100.3
Ave - 2012	104.9	105.7		110.6	101.4	102.1	95.1	122.0		76.7			100.9
Ave - 2013	105.0	106.2		110.9	98.9	103.0	95.2	113.2		77.0			100.7
2013													
September	105.7	107.1		109.6	98.9	102.9	95.2	109.7		77.0			100.7
October	104.9	106.0		112.3	99.4	102.7	95.2	109.7		77.0			101.6
November	104.8	105.8		112.5	99.2	103.5	95.2	109.7		77.0			100.4
December	105.2	106.7		111.4	98.5	103.0	91.6	109.7		77.0			99.4
2014													
January	105.8	107.6		109.2	97.9	102.4	92.1	107.2		77.0			100.0
February	105.3	106.8		111.1	97.9	102.9	92.1	107.2		77.0			100.0
March	105.4	107.1		110.4	97.9	102.7	92.1	107.2		77.0			100.0
April	105.0	106.7		111.1	97.9	100.8	92.1	107.1		78.9			98.5
May	105.0	106.6		110.1	98.1	101.9	92.1	107.2		78.9			99.0
June	106.6	108.9		109.8	97.8	102.0	92.1	107.2		78.9			98.2
July	106.9	109.2		109.8	98.9	101.9	93.6	107.2		78.9			98.5
August	107.6	110.0		109.6	98.9	101.9	95.0	107.2		78.9			98.5
September (P)	107.2	109.3		109.6	99.1	102.8	96.7	107.1		78.9			98.5
Percentage Change (P)													
Sep 2014 over Aug 2014	-0.4	-0.7		0.0	0.2	0.8	1.8	-0.1		0.0			0.0
Sep 2014 over Sep 2013	1.4	2.0		0.0	0.2	-0.1	1.7	-2.4		2.5			-2.1

Source : Samoa Bureau Statistics
(P): Provisional figures
Note: n.a. Not applicable

Table 4. LOCAL GOODS COMPONENT OF THE CONSUMER PRICE INDEX
(Base Period : Average Prices August 2010 = 100)

Group	All Items	Food and Non Alcoholic Beverages	Alcoholic Beverages and Tobacco	Clothing and Footwear	Housing, Water, Electricity, Gas and other Fuels	Furnishings, Household Equipment and Maintenance	Health	Transport	Communication	Recreation and Culture	Education	Restaurants	Miscellaneous goods and services
Weights	575.2	229.8	79.6	6.4	60.6	8.6	3.0	50.3	58.2	32.7	31.3	14.7	n.a.
Ave - 2011	105.9	111.2	103.3	106.4	108.0	98.9	100.0	101.8	100.0	98.7	100.0	100.0	
Ave - 2012	108.8	115.8	106.5	117.3	110.3	95.9	100.0	104.2	100.0	98.8	101.6	100.0	
Ave - 2013	109.8	116.9	110.5	117.9	108.8	97.1	100.0	104.4	100.0	99.4	101.6	101.6	
2013													
September	107.1	108.4	111.6	117.9	110.4	96.2	100.0	109.6	100.0	99.8	101.6	100.0	
October	105.4	105.9	111.7	117.9	110.4	96.2	100.0	101.2	100.0	99.8	101.6	100.0	
November	104.2	103.1	111.7	117.9	110.4	94.2	100.0	98.0	100.0	99.8	101.6	109.4	
December	105.3	104.8	111.7	117.9	110.4	94.2	100.0	102.7	100.0	99.8	101.6	109.4	
2014													
January	106.8	106.0	111.7	117.9	110.4	94.5	170.0	110.2	100.0	99.8	101.6	109.4	
February	105.9	103.5	114.1	117.9	110.4	94.5	170.0	107.7	100.0	99.8	101.6	109.4	
March	108.9	112.1	114.5	117.9	110.4	94.5	170.0	102.0	100.0	99.8	101.6	109.4	
April	107.3	106.7	114.7	135.5	110.4	94.5	170.0	106.3	100.0	99.8	101.6	109.4	
May	108.0	104.4	114.7	135.5	113.5	94.5	170.0	121.0	100.0	99.8	101.6	109.4	
June	107.8	104.0	114.7	135.5	113.5	94.5	170.0	120.5	100.0	99.8	101.6	109.4	
July	106.6	100.8	114.7	135.5	113.5	94.5	170.0	120.7	100.0	99.8	101.6	109.4	
August	105.7	99.8	114.7	135.5	113.5	94.5	170.0	114.9	100.0	99.8	101.6	109.4	
September (P)	105.7	99.6	114.7	135.5	116.2	94.5	170.0	112.3	100.0	99.8	101.6	109.4	

Percentage Change (P)

Sep 2014 over Aug 2014	0.0	-0.2	0.0	0.0	2.4	0.0	0.0	-2.2	0.0	0.0	0.0	0.0	
Sep 2014 over Sep 2013	-1.4	-8.1	2.7	14.9	5.3	-1.8	70.0	2.5	-0.1	0.0	0.0	9.4	

LOCAL ITEMS UNDERLYING INDEX

Group	All Items	Food and Non Alcoholic Beverages	Alcoholic Beverages and Tobacco	Clothing and Footwear	Housing, Water, Electricity, Gas and other Fuels	Furnishings, Household Equipment and Maintenance	Health	Transport	Communication	Recreation and Culture	Education	Restaurants	Miscellaneous goods and services
Weights	117.4	75.5	n.a.	6.4	1.2	8.6	0.9	9.1	n.a.	1.0	n.a.	14.7	n.a.
Ave - 2011	100.7	102.0		106.4	105.3	98.9	100.0	88.6		100.0		100.0	
Ave - 2012	102.5	103.9		117.3	105.2	95.9	100.0	90.5		100.0		100.0	
Ave - 2013	103.8	105.5		117.9	105.9	97.1	100.0	90.5		100.0		101.6	
2013													
September	103.7	105.6		117.9	107.3	96.2	100.0	90.5		100.0		100.0	
October	103.2	105.0		117.9	108.5	96.2	100.0	90.5		100.0		100.0	
November	104.2	104.9		117.9	110.8	94.2	100.0	90.5		100.0		109.4	
December	104.1	104.6		117.9	110.8	94.2	100.0	90.5		100.0		109.4	
2014													
January	104.3	104.3		117.9	110.6	94.5	100.0	90.5		100.0		109.4	
February	104.3	104.3		117.9	111.6	94.5	100.0	90.5		100.0		109.4	
March	103.9	103.9		117.9	111.6	94.5	100.0	90.5		100.0		109.4	
April	105.3	105.3		135.5	111.6	94.5	100.0	90.5		100.0		109.4	
May	105.2	105.2		135.5	111.6	94.5	100.0	90.5		100.0		109.4	
June	105.7	105.7		135.5	111.6	94.5	100.0	90.5		100.0		109.4	
July	105.5	105.5		135.5	111.6	94.5	100.0	90.5		100.0		109.4	
August	105.7	105.7		135.5	111.6	94.5	100.0	90.5		100.0		109.4	
September (P)	105.6	105.6		135.5	111.6	94.5	100.0	90.5		100.0		109.4	

Percentage Change (P)

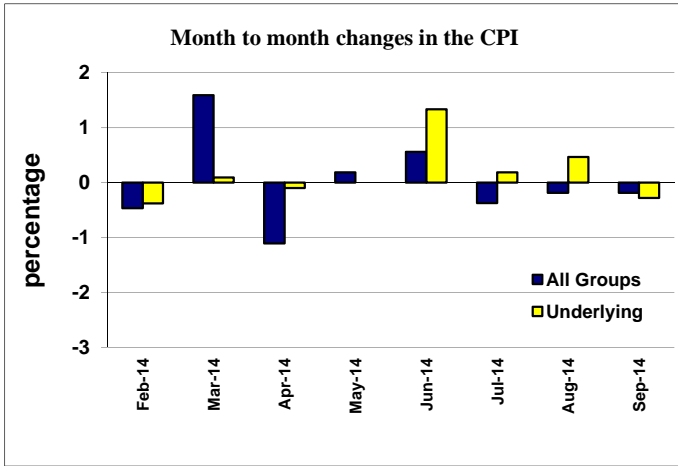
Sep 2014 over Aug 2014	-0.1	-0.1		0.0	0.0	0.0	0.0	0.0		0.0		0.0	
Sep 2014 over Sep 2013	1.8	0.0		14.9	4.0	-1.8	0.0	0.0		0.0		9.4	

Source : Samoa Bureau Statistics

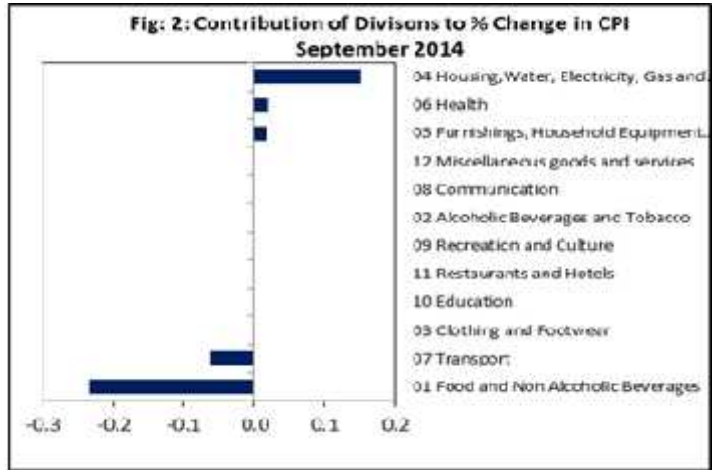
(P): Provisional figures

Note: n.a. Not applicable

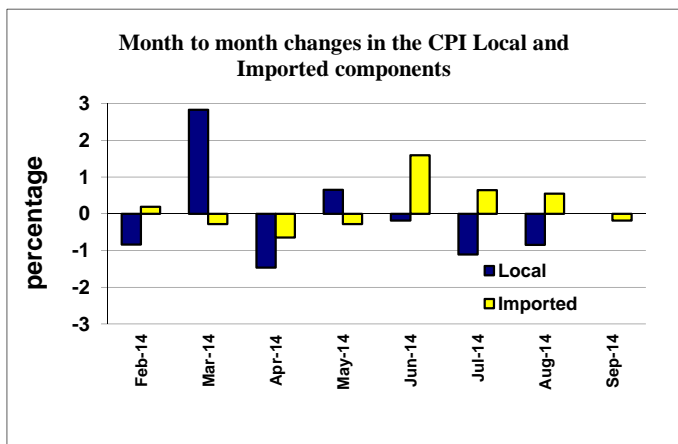
Graph.1



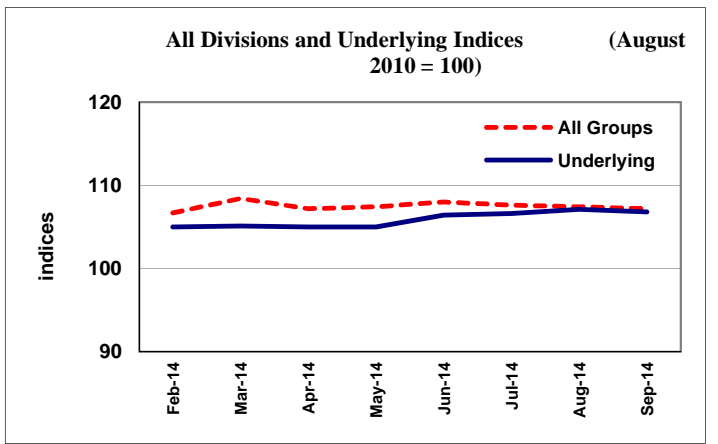
Graph.2



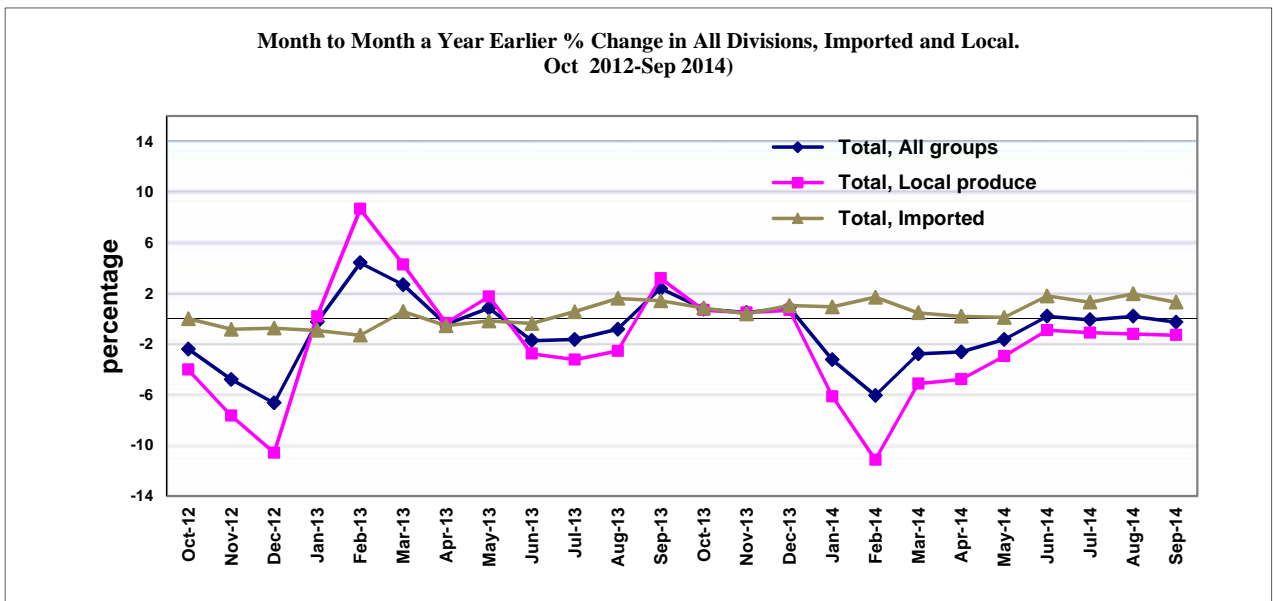
Graph.3



Graph.4



Graph 5



Source: Samoa Bureau of Statistics