

Please address all correspondence  
To Government Statistician  
In reply, please quote the file reference



File Ref: CPI 07/14

GOVERNMENT OF SAMOA

## SAMOA BUREAU OF STATISTICS

# CONSUMER PRICE INDEX July 2014

### Key findings:

The Consumer Price Index for July 2014 decreased marginally by 0.4 percent compared to the previous month.

- The Food and Non Alcoholic Beverages index decreased by 1.2 percent, driven down by lower prices for market staples.
- Transport index increased by 1.4 percent.
- Health index increased by 1.1 percent.
- The Average Annual Inflation for the year ended July 2014 negative 1.1 percent.

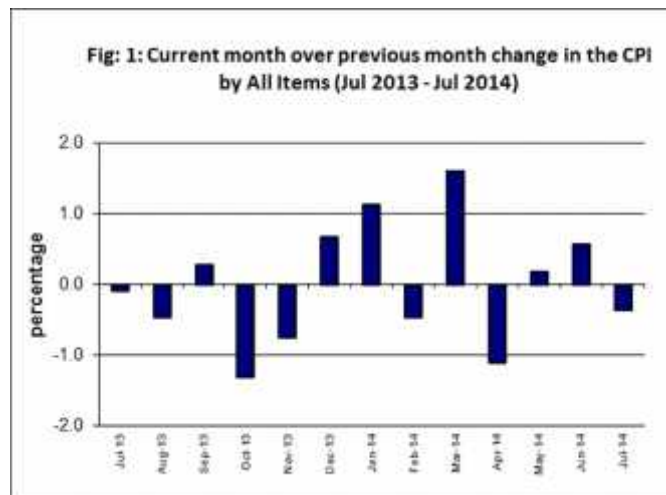
The CPI fell 0.1 percent from July 2013.

### SUMMARY

The Consumer Price Index for July 2014 was 0.4 percent lower than June 2014, and was 0.1 percent lower than July 2013.

The decrease of the Local Goods Component by 1.2 percent reflects lower prices for market staples and fresh fish, which was also the main contributor to the decrease of 0.4 percent in the All Items Consumer Price Index.

The Imported Goods Component recorded an increase of 0.7 percent over June 2014. Figure 1 shows the month to month percentage changes in the Consumer Price Index by All Items from July 2013 to July 2014.

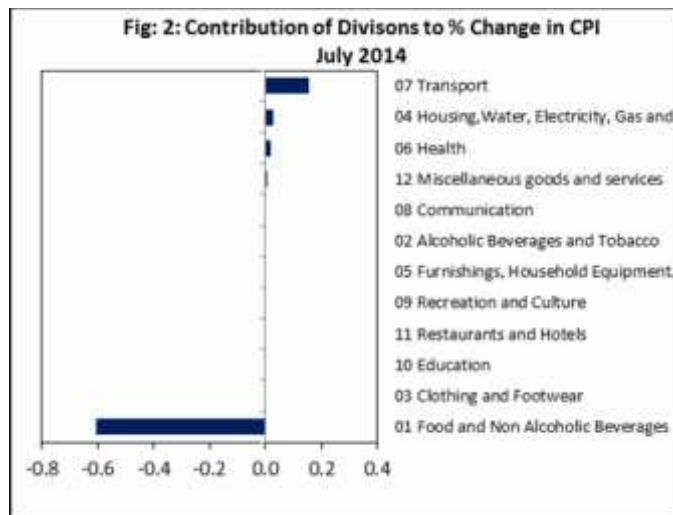


Source : Samoa Bureau of Statistics

### Total All Divisions Contribution

Food and Non Alcoholic Beverages division was the main contributor to the overall decrease of 0.4 percent in the All Division Consumer Price Index.

On the other hand, there was an offsetting contribution from the Transport division with a 0.15 percent increase. Presented in Fig 2 is the July 2014 contribution of divisions to the percentage change in CPI from June 2014.



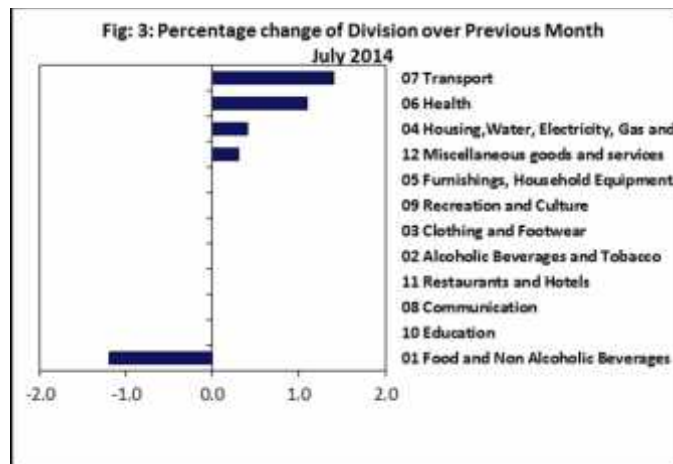
Source : Samoa Bureau of Statistics

### Consumer Price Index (% Change)

The Food and Non Alcoholic Beverages index recorded decrease of 1.2 percent.

On the other hand, increases were recorded for the Transport index with 1.4 percent, Health index with 1.1 percent, Housing, Water, Electricity, Gas and other Fuels index with 0.4 percent and Miscellaneous Goods and Services index with 0.3 percent.

No changes were recorded for the Alcoholic Beverages and Tobacco, Clothing and Footwear, Furnishing, Household Equipment and Maintenance, Communication, Recreation and culture, Education and Restaurants indices. Graphically presented in Fig 3 is the July 2014 percentage change for all divisions from June 2014.



Source : Samoa Bureau of Statistics

### Local Goods Component

The Local Goods Component of the Consumer Price Index registered a decrease of 1.2 percent when compared to the previous month. This decrease was mainly due to lower prices recorded for taamu, fresh fish (piece), banana, yam and chinese cabbage.

### Imported Goods Component

Increased prices recorded for chicken leg quarter, rice and fuel (petrol and diesel) resulted in the 0.7 percent increase in the Imported Good Component.

### Food and Non Alcoholic Beverages Index

The 1.2 percent decrease in the Food and Non Alcoholic Beverages index was mainly due to lower prices recorded for mutton flap, taamu, fresh fish (piece), banana, yam and chinese cabbage.



## Transport Index

Higher prices recorded for fuel (petrol and diesel) is reflected in the 1.4 percent increase in the Transport Index.

## Health Index

The 1.1 percent increase in the Health index was mainly due to higher prices recorded for paracetamol.

## Housing, Water, Electricity, Gas and other Fuels Index

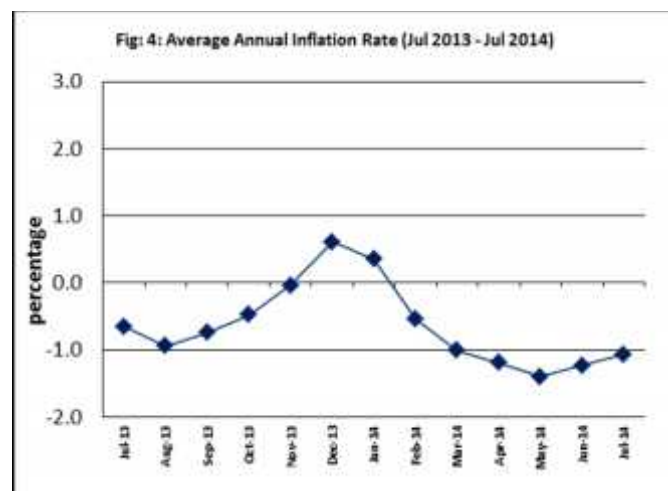
An increase of 0.4 percent in the Housing, Water, Electricity, Gas and other Fuels index is a result of the higher prices recorded for roofing iron and kerosene.

## Underlying Indices <sup>1/</sup>

The All Items Underlying Index for July 2014 registered an increase of 0.3 percent when compared to June 2014, and a decrease of 0.5 percent when compared to July last year. The Imported Items Underlying Index registered an increase of 0.3 percent, while local Items Underlying Index registered a decrease of 0.2 percent.

## Inflation Rate

The average annual inflation rate for the year ended July 2014 was negative 1.1 percent. For the twelve months ending July 2013 the inflation rate was also negative 0.7 percent. Presented in Fig 4 is the Average annual inflation rate (July 2013 - July 2014).



Source : Samoa Bureau of Statistics

The attached Tables and Graphs provide the user with more detailed analysis.



Date of release: 12<sup>th</sup> August 2014.

The next Consumer Price Index will be released on 10<sup>th</sup> September 2014.

<sup>1/</sup> Quarterly movements in the 'headline' CPI series can be volatile. This volatility reflects price changes in particular items that may be due, among other factors, to fluctuations in commodity markets and agricultural conditions, policy changes, or seasonal or infrequent price resetting.

Underlying inflation is measure of inflation that excludes certain items that face volatile price movements. Underlying inflation eliminates products that can have temporary price shocks because these shocks can diverge from the overall trend of inflation and give a false measure of inflation.

Underlying inflation can also exclude government charges as they change rarely and are not set by an open market and so may also give a false measure of inflation. Prices that are subject to price control or subsidy could also be removed for the same reasons.

---

*PO Box 1151*  
**Fax:** (685) 24675  
APIA, SAMOA  
**Telephone:** (685) 62000

**E-Mail:** [Info.stats@sbs.gov.ws](mailto:Info.stats@sbs.gov.ws)

**Website:** [www.sbs.gov.ws](http://www.sbs.gov.ws)

**Table 1. CONSUMER PRICE INDEX.**  
(Base Period : Average Prices August 2010 = 100)

Group	All Items	Food and Non Alcoholic Beverages	Alcoholic Beverages and Tobacco	Clothing and Footwear	Housing, Water, Electricity, Gas and other Fuels	Furnishings, Household Equipment, and Maintenance	Health	Transport	Communication	Recreation and Culture	Education	Restaurants	Miscellaneous goods and services
<i>Weights</i>	<b>1000</b>	<b>502</b>	<b>97</b>	<b>17</b>	<b>78</b>	<b>31</b>	<b>16</b>	<b>97</b>	<b>58</b>	<b>34</b>	<b>31</b>	<b>15</b>	<b>24</b>
Ave - 2011	105.7	108.2	105.0	103.9	106.5	100.5	98.7	106.6	100.0	98.1	100.0	100.0	100.3
Ave - 2012	107.9	110.3	107.8	113.1	108.9	100.4	96.0	111.2	100.0	98.0	101.6	100.0	100.9
Ave - 2013	108.6	111.1	110.8	113.5	107.2	101.4	96.1	111.8	100.0	98.5	101.6	101.6	100.7
2013													
July	107.7	108.7	111.7	112.6	107.0	101.9	96.8	114.4	100.0	98.9	101.6	100.0	101.1
August	107.2	107.9	111.7	112.7	107.1	101.6	96.1	113.8	100.0	98.9	101.6	100.0	100.7
September	107.5	107.7	111.7	112.7	108.5	101.1	96.1	116.5	100.0	98.9	101.6	100.0	100.7
October	106.1	105.9	111.7	114.4	108.7	100.9	96.1	110.7	100.0	98.9	101.6	100.0	101.6
November	105.3	104.6	111.7	114.5	108.6	101.0	96.1	108.3	100.0	98.9	101.6	109.4	100.4
December	106.0	105.8	112.3	113.8	108.4	100.5	93.2	109.4	100.0	98.9	101.6	109.4	99.4
2014													
January	107.2	106.9	112.3	112.4	108.4	100.2	106.9	114.6	100.0	98.9	101.6	109.4	100.0
February	106.7	105.3	114.3	113.7	108.5	100.6	106.9	115.7	100.0	98.9	101.6	109.4	100.0
March	108.4	109.4	114.6	113.2	108.4	100.5	106.9	111.3	100.0	98.9	101.6	109.4	100.0
April	107.2	106.7	113.2	120.1	108.4	99.1	106.9	113.7	100.0	99.0	101.6	109.4	98.5
May	107.4	105.6	113.2	119.5	110.7	99.9	106.9	119.9	100.0	99.0	101.6	109.4	99.0
June	108.0	106.6	114.8	119.3	110.5	99.9	106.9	119.5	100.0	99.0	101.6	109.4	98.2
July (P)	107.6	105.3	114.8	119.3	110.9	99.9	108.1	121.2	100.0	99.0	101.6	109.4	98.5
<b>Percentage Change (P)</b>													
Jul 2014 over Jun 2014	-0.4	-1.2	0.0	0.0	0.4	0.0	1.1	1.4	0.0	0.0	0.0	0.0	0.3
Jul 2014 over Jul 2013	-0.1	-3.1	2.8	6.0	3.6	-2.0	11.7	5.9	0.0	0.1	0.0	9.4	-2.6
<b>ALL ITEMS UNDERLYING INDEX</b>													
Group	All Items	Food and Non Alcoholic Beverages	Alcoholic Beverages and Tobacco	Clothing and Footwear	Housing, Water, Electricity, Gas and other Fuels	Furnishings, Household Equipment, and Maintenance	Health	Transport	Communication	Recreation and Culture	Education	Restaurants	Miscellaneous goods and services
<i>Weights</i>	<b>480</b>	<b>348</b>	<i>n.a.</i>	<b>17</b>	<b>17</b>	<b>31</b>	<b>14</b>	<b>13</b>	<i>n.a.</i>	<b>2</b>	<i>n.a.</i>	<b>15</b>	<b>24</b>
Ave - 2011	103.4	104.8		103.9	99.8	100.5	98.5	94.9		89.3		100.0	100.3
Ave - 2012	104.3	105.3		113.1	101.7	100.4	95.4	100.1		86.8		100.0	100.9
Ave - 2013	104.7	106.0		113.5	99.4	101.4	95.5	97.4		87.0		101.6	100.7
2013													
July	105.2	106.7		112.6	100.1	101.9	96.3	96.4		87.0		100.0	101.1
August	104.9	106.3		112.7	100.4	101.6	95.5	96.4		87.0		100.0	100.7
September	105.2	106.8		112.7	99.5	101.1	95.5	96.4		87.0		100.0	100.7
October	104.5	105.7		114.4	100.1	100.9	95.5	96.4		87.0		100.0	101.6
November	104.7	105.6		114.5	100.1	101.0	95.5	96.4		87.0		109.4	100.4
December	104.9	106.2		113.8	99.4	100.5	92.1	96.4		87.0		109.4	99.4
2014													
January	105.4	107.0		112.4	98.8	100.2	92.7	95.6		87.0		109.4	100.0
February	105.0	106.4		113.7	98.9	100.6	92.7	95.6		87.0		109.4	100.0
March	105.1	106.5		113.2	98.9	100.5	92.7	95.6		87.0		109.4	100.0
April	105.0	106.3		120.1	98.9	99.1	92.7	95.6		88.1		109.4	98.5
May	105.0	106.2		119.5	99.1	99.9	92.7	95.6		88.1		109.4	99.0
June	106.3	108.1		119.3	98.8	99.9	92.7	95.6		88.1		109.4	98.2
July (P)	106.6	108.3		119.3	99.8	99.9	94.0	95.6		88.1		109.4	98.5
<b>Percentage Change (P)</b>													
Jul 2014 over Jun 2014	0.3	0.2		0.0	1.0	0.0	1.4	0.0		0.0		0.0	0.3
Jul 2014 over Jul 2013	-0.5	1.6		5.9	-0.3	-2.0	-2.4	-0.8		1.2		9.4	-2.6

Source : Samoa Bureau Statistics  
(P): Provisional figures  
Note: n.a. Not applicable



Commodities	Weight	Unit	2013			2014		
			May	June	July	May	Jun	Jul (P)
<b>Health</b>								
Paracetamol	3.7	20tablet	1.88	1.93	1.95	1.75	1.75	1.80
Magnesium Trisilicate	3.6	120mls	7.83	8.00	7.30	7.30	7.30	7.30
Cough Mixture	3.6	100mls	9.95	9.50	9.95	9.40	9.40	9.40
Hospital Charge	2.1	per night	5.00	5.00	5.00	10.00	10.00	10.00
<b>Transport</b>								
Petrol	39.1	ltr	2.99	2.94	3.08	3.03	3.02	3.12
Labour charge car repair	9.1	min crg	51.67	51.67	51.67	51.67	51.67	51.67
Air Fares Apia-Auckland-Apia	7.8	return	1619.93	1920.95	2014.00	1857.20	1813.20	1877.35
Air Fares Fagalii-Pago	7.8	return	370.00	370.00	370.00	380.00	380.00	380.00
Bus Fares Apia-Motootua Hosp	3.7	per trip	0.80	0.80	0.80	1.30	1.30	1.30
Bus Fares Apia-Malua	3.7	per trip	2.00	2.00	2.00	2.60	2.60	2.60
Bus Fares Apia-Falefa	3.7	per trip	3.20	3.20	3.20	3.70	3.70	3.70
Car Tyre 205/70R(14)	3.7	size 14	220.00	220.00	220.00	215.00	215.00	215.00
Taxi Fares PO-Motootua Hosp	3.3	per trip	3.50	3.50	3.50	4.80	4.80	4.80
Taxi Fares Po-Malua	3.3	per trip	26.10	26.10	26.10	31.30	31.30	31.30
Taxi Fares PO-Falefa	3.3	per trip	36.00	36.00	36.00	43.20	43.20	43.20
Diesel	2.8	ltr	3.03	3.00	3.12	3.07	3.06	3.14
Car Registration 1500-2000 cc	2.0	ann rate	290.00	290.00	290.00	290.00	290.00	290.00
Boat Fares Mulifanua-Salelologa	1.3	one way	12.00	12.00	12.00	12.00	12.00	12.00
<b>Communication</b>								
Telephone local call	23.6	1 min	0.06	0.06	0.06	0.06	0.06	0.06
Telephone NZ call	10.6	3 mins	2.55	2.55	2.55	2.55	2.55	2.55
Telephone USA call	10.6	3 mins	5.37	5.37	5.37	5.35	5.35	5.35
Telephone Rental	10.6	monthly	24.15	24.15	24.15	24.15	24.15	24.15
Internet Prepaid Rates (a)	2.6	30 mins	5.10	5.10	5.10	5.10	5.10	5.10
PO Box rental (small box)	0.2	ann rate	80.00	80.00	80.00	80.00	80.00	80.00
<b>Recreation and Culture</b>								
National Lotto (a)	23.6	ticket	7.00	7.00	7.00	7.00	7.00	7.00
Tattslotto	3.8	ticket	13.50	13.50	13.50	13.50	13.50	13.50
News Paper Samoa Observer	2.7	each	2.50	2.50	2.50	2.50	2.50	2.50
<b>Education</b>								
School Fees Primary	10.5	Yr 4	10.00	10.00	10.00	10.00	10.00	10.00
School Fees Secondary	8.1	Yr 10	50.00	50.00	50.00	50.00	50.00	50.00
School Fees Primary	7.6	Yr 8	20.00	20.00	20.00	20.00	20.00	20.00
School Fees (NUS registration)	5.1	tertiary	265.00	265.00	265.00	265.00	265.00	265.00
<b>Restaurants</b>								
Meal (Fish & Chips)	11.0	1 serve	8.00	8.00	8.00	9.00	9.00	9.00
Meal (Pinati)	3.7	1 serve	3.00	3.00	3.00	3.00	3.00	3.00
<b>Miscellaneous goods and services</b>								
Toilet soap	7.6	90g	1.11	1.11	1.11	1.09	1.07	1.09
Diapers (16kg & over )	7.2	24pkt	37.82	37.80	37.80	37.73	37.73	37.73
Toilet Paper	3.6	roll	1.00	0.98	0.98	0.90	0.90	0.90

Source : Samoa Bureau Statistics

(a) : New commodity from August 2010

(b) : Average price across all brands

(P) : Provisional figures

**Table 3. IMPORTED GOODS COMPONENT OF THE CONSUMER PRICE INDEX**  
(Base Period : Average Prices August 2010 = 100)

Group	All Items	Food and Non Alcoholic Beverages	Alcoholic Beverages and Tobacco	Clothing and Footwear	Housing, Water, Electricity, Gas and other Fuels	Furnishings, Household Equipment and Maintenance	Health	Transport	Communication	Recreation and Culture	Education	Restaurants	Miscellaneous goods and services
<b>Weights</b>	<b>424.8</b>	<b>272.0</b>	<b>17.1</b>	<b>10.9</b>	<b>17.5</b>	<b>22.7</b>	<b>12.8</b>	<b>46.8</b>	<b>n.a.</b>	<b>1.3</b>	<b>n.a.</b>	<b>n.a.</b>	<b>23.7</b>
Ave - 2011	105.5	105.6	112.9	102.5	101.2	101.1	98.4	111.6		81.1			100.3
Ave - 2012	106.7	105.7	113.9	110.6	103.8	102.1	95.1	118.6		76.7			100.9
Ave - 2013	106.9	106.2	112.1	110.9	101.7	103.0	95.2	119.7		77.0			100.7
2013													
July	107.6	106.9	111.9	109.5	102.5	103.2	96.0	120.7		77.0			101.1
August	107.5	106.4	111.9	109.6	103.2	102.7	95.2	123.6		77.0			100.7
September	108.0	107.1	111.9	109.6	102.0	102.9	95.2	123.9		77.0			100.7
October	107.0	106.0	111.9	112.3	102.7	102.7	95.2	120.9		77.0			101.6
November	106.7	105.8	111.5	112.5	102.4	103.5	95.2	119.4		77.0			100.4
December	106.9	106.7	115.2	111.4	101.4	103.0	91.6	116.7		77.0			99.4
2014													
January	107.7	107.6	115.2	109.2	101.2	102.4	92.1	119.3		77.0			100.0
February	107.9	106.8	115.2	111.1	102.0	102.9	92.1	124.2		77.0			100.0
March	107.6	107.1	115.2	110.4	101.2	102.7	92.1	121.3		77.0			100.0
April	106.9	106.7	106.0	111.1	101.2	100.8	92.1	121.6		78.9			98.5
May	106.6	106.6	106.0	110.1	100.8	101.9	92.1	118.7		78.9			99.0
June	108.3	108.8	115.2	109.8	100.3	102.0	92.1	118.4		78.9			98.2
July (P)	109.0	109.2	115.2	109.8	101.8	101.9	93.6	121.9		78.9			98.5
<b>Percentage Change (P)</b>													
Jul 2014 over Jun 2014	0.7	0.3	0.0	0.0	1.4	0.0	1.6	3.0		0.0			0.3
Jul 2014 over Jul 2013	1.3	2.1	3.0	0.2	-0.7	-1.2	-2.5	0.9		2.5			-2.6
<b>IMPORTED ITEMS UNDERLYING INDEX</b>													
Group	All Items	Food and Non Alcoholic Beverages	Alcoholic Beverages and Tobacco	Clothing and Footwear	Housing, Water, Electricity, Gas and other Fuels	Furnishings, Household Equipment and Maintenance	Health	Transport	Communication	Recreation and Culture	Education	Restaurants	Miscellaneous goods and services
<b>Weights</b>	<b>362.8</b>	<b>272.0</b>	<b>n.a.</b>	<b>10.9</b>	<b>15.4</b>	<b>22.7</b>	<b>12.8</b>	<b>4.0</b>	<b>n.a.</b>	<b>1.3</b>	<b>n.a.</b>	<b>n.a.</b>	<b>23.7</b>
Ave - 2011	104.3	105.6		102.5	99.4	101.1	98.4	109.2		81.1			100.3
Ave - 2012	104.9	105.7		110.6	101.4	102.1	95.1	122.0		76.7			100.9
Ave - 2013	105.0	106.2		110.9	98.9	103.0	95.2	113.2		77.0			100.7
2013													
July	105.6	106.9		109.5	99.8	103.2	96.0	109.9		77.0			101.1
August	105.2	106.4		109.6	100.2	102.7	95.2	109.9		77.0			100.7
September	105.7	107.1		109.6	98.9	102.9	95.2	109.7		77.0			100.7
October	104.9	106.0		112.3	99.4	102.7	95.2	109.7		77.0			101.6
November	104.8	105.8		112.5	99.2	103.5	95.2	109.7		77.0			100.4
December	105.2	106.7		111.4	98.5	103.0	91.6	109.7		77.0			99.4
2014													
January	105.8	107.6		109.2	97.9	102.4	92.1	107.2		77.0			100.0
February	105.3	106.8		111.1	97.9	102.9	92.1	107.2		77.0			100.0
March	105.4	107.1		110.4	97.9	102.7	92.1	107.2		77.0			100.0
April	105.0	106.7		111.1	97.9	100.8	92.1	107.1		78.9			98.5
May	105.0	106.6		110.1	98.1	101.9	92.1	107.2		78.9			99.0
June	106.6	108.8		109.8	97.8	102.0	92.1	107.2		78.9			98.2
July (P)	106.9	109.2		109.8	98.9	101.9	93.6	107.2		78.9			98.5
<b>Percentage Change (P)</b>													
Jul 2014 over Jun 2014	0.3	0.3		0.0	1.1	0.0	1.6	0.0		0.0			0.3
Jul 2014 over Jul 2013	1.2	2.1		0.2	-1.0	-1.2	-2.5	-2.4		2.5			-2.6

Source : Samoa Bureau Statistics  
(P): Provisional figures  
Note: n.a. Not applicable



**Table 4. LOCAL GOODS COMPONENT OF THE CONSUMER PRICE INDEX**  
(Base Period : Average Prices August 2010 = 100)

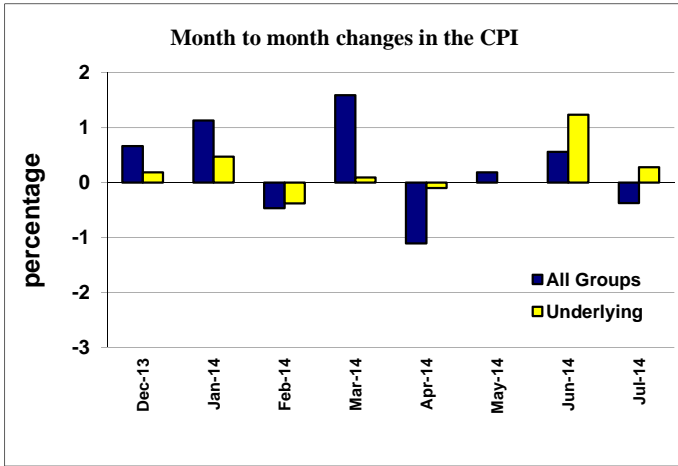
Group	All Items	Food and Non Alcoholic Beverages	Alcoholic Beverages and Tobacco	Clothing and Footwear	Housing, Water, Electricity, Gas and other Fuels	Furnishings, Household Equipment and Maintenance	Health	Transport	Communication	Recreation and Culture	Education	Restaurants	Miscellaneous goods and services
<b>Weights</b>	<b>575.2</b>	<b>229.8</b>	<b>79.6</b>	<b>6.4</b>	<b>60.6</b>	<b>8.6</b>	<b>3.0</b>	<b>50.3</b>	<b>58.2</b>	<b>32.7</b>	<b>31.3</b>	<b>14.7</b>	<b>n.a.</b>
Ave - 2011	105.9	111.2	103.3	106.4	108.0	98.9	100.0	101.8	100.0	98.7	100.0	100.0	
Ave - 2012	108.8	115.8	106.5	117.3	110.3	95.9	100.0	104.2	100.0	98.8	101.6	100.0	
Ave - 2013	109.8	116.9	110.5	117.9	108.8	97.1	100.0	104.4	100.0	99.4	101.6	101.6	
2013													
July	107.8	110.9	111.6	117.9	108.2	98.6	100.0	108.6	100.0	99.8	101.6	100.0	
August	107.0	109.7	111.6	117.9	108.2	98.6	100.0	104.7	100.0	99.8	101.6	100.0	
September	107.1	108.4	111.6	117.9	110.4	96.2	100.0	109.6	100.0	99.8	101.6	100.0	
October	105.4	105.9	111.7	117.9	110.4	96.2	100.0	101.2	100.0	99.8	101.6	100.0	
November	104.2	103.1	111.7	117.9	110.4	94.2	100.0	98.0	100.0	99.8	101.6	109.4	
December	105.3	104.8	111.7	117.9	110.4	94.2	100.0	102.7	100.0	99.8	101.6	109.4	
2014													
January	106.8	106.0	111.7	117.9	110.4	94.5	170.0	110.2	100.0	99.8	101.6	109.4	
February	105.9	103.5	114.1	117.9	110.4	94.5	170.0	107.7	100.0	99.8	101.6	109.4	
March	108.9	112.1	114.5	117.9	110.4	94.5	170.0	102.0	100.0	99.8	101.6	109.4	
April	107.3	106.7	114.7	135.5	110.4	94.5	170.0	106.3	100.0	99.8	101.6	109.4	
May	108.0	104.4	114.7	135.5	113.5	94.5	170.0	121.0	100.0	99.8	101.6	109.4	
June	107.8	104.0	114.7	135.5	113.5	94.5	170.0	120.5	100.0	99.8	101.6	109.4	
July (P)	106.6	100.8	114.7	135.5	113.5	94.5	170.0	120.7	100.0	99.8	101.6	109.4	
<b>Percentage Change (P)</b>													
Jul 2014 over Jun 2014	-1.2	-3.1	0.0	0.0	0.0	0.0	0.0	0.1	0.0	0.0	0.0	0.0	0.0
Jul 2014 over Jul 2013	-1.2	-9.1	2.7	14.9	4.9	-4.2	70.0	11.1	-0.1	0.0	0.0	9.4	
<b>LOCAL ITEMS UNDERLYING INDEX</b>													
Group	All Items	Food and Non Alcoholic Beverages	Alcoholic Beverages and Tobacco	Clothing and Footwear	Housing, Water, Electricity, Gas and other Fuels	Furnishings, Household Equipment and Maintenance	Health	Transport	Communication	Recreation and Culture	Education	Restaurants	Miscellaneous goods and services
<b>Weights</b>	<b>117.4</b>	<b>75.5</b>	<b>n.a.</b>	<b>6.4</b>	<b>1.2</b>	<b>8.6</b>	<b>0.9</b>	<b>9.1</b>	<b>n.a.</b>	<b>1.0</b>	<b>n.a.</b>	<b>14.7</b>	<b>n.a.</b>
Ave - 2011	100.7	102.0		106.4	105.3	98.9	100.0	88.6		100.0		100.0	
Ave - 2012	102.5	103.9		117.3	105.2	95.9	100.0	90.5		100.0		100.0	
Ave - 2013	103.8	105.5		117.9	105.9	97.1	100.0	90.5		100.0		101.6	
2013													
July	103.9	105.9		117.9	103.6	98.6	100.0	90.5		100.0		100.0	
August	104.0	106.0		117.9	103.4	98.6	100.0	90.5		100.0		100.0	
September	103.7	105.6		117.9	107.3	96.2	100.0	90.5		100.0		100.0	
October	103.2	105.0		117.9	108.5	96.2	100.0	90.5		100.0		100.0	
November	104.2	104.9		117.9	110.8	94.2	100.0	90.5		100.0		109.4	
December	104.1	104.6		117.9	110.8	94.2	100.0	90.5		100.0		109.4	
2014													
January	104.3	104.3		117.9	110.6	94.5	100.0	90.5		100.0		109.4	
February	104.3	104.3		117.9	111.6	94.5	100.0	90.5		100.0		109.4	
March	103.9	103.9		117.9	111.6	94.5	100.0	90.5		100.0		109.4	
April	105.3	105.3		135.5	111.6	94.5	100.0	90.5		100.0		109.4	
May	105.2	105.2		135.5	111.6	94.5	100.0	90.5		100.0		109.4	
June	105.7	105.7		135.5	111.6	94.5	100.0	90.5		100.0		109.4	
July (P)	105.5	105.5		135.5	111.6	94.5	100.0	90.5		100.0		109.4	
<b>Percentage Change (P)</b>													
Jul 2014 over Jun 2014	-0.2	-0.2		0.0	0.0	0.0	0.0	0.0		0.0		0.0	
Jul 2014 over Jul 2013	1.5	-0.4		14.9	7.7	-4.2	0.0	0.0		0.0		9.4	

Source : Samoa Bureau Statistics

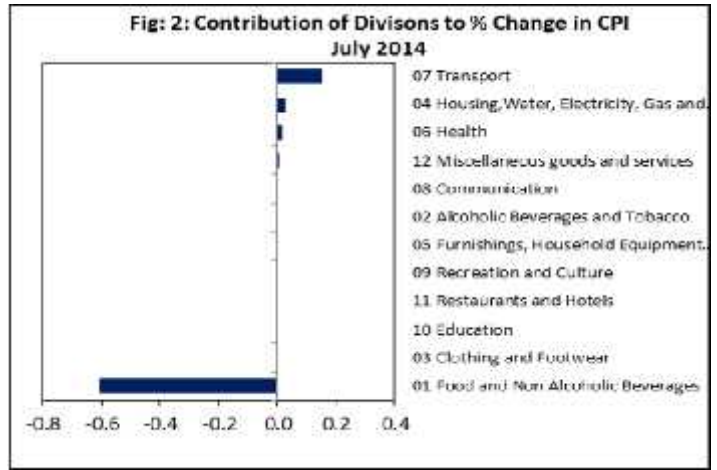
(P): Provisional figures

Note: n.a. Not applicable

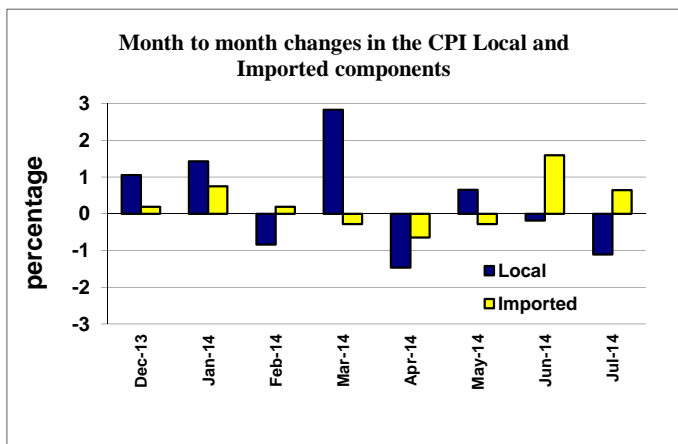
Graph.1



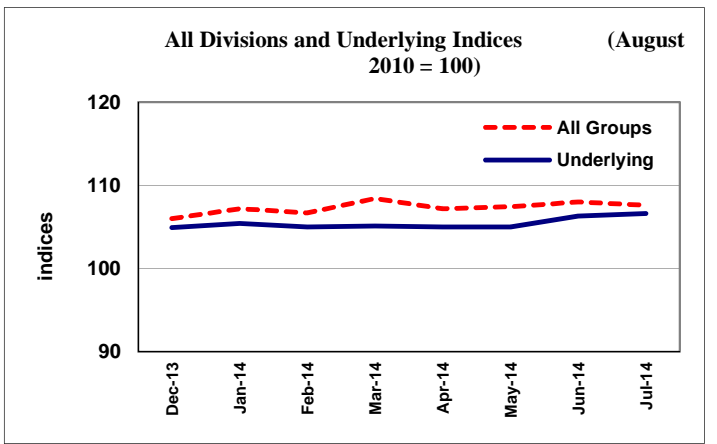
Graph.2



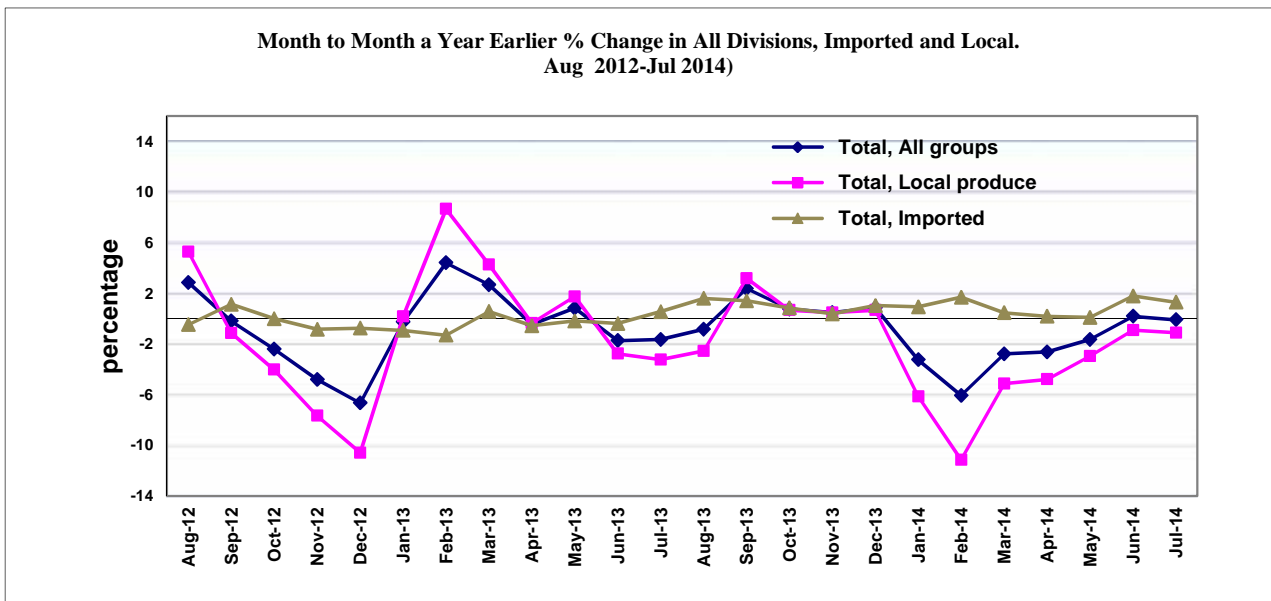
Graph.3



Graph.4



Graph 5



Source: Samoa Bureau of Statistics