

Please address all correspondence  
To Government Statistician  
In reply, please quote the file reference



File Ref: CPI 06/14

GOVERNMENT OF SAMOA

## SAMOA BUREAU OF STATISTICS

# CONSUMER PRICE INDEX June 2014

### Key findings:

The Consumer Price Index for June 2014 increased by 0.6 percent compared from the previous month.

- Alcoholic Beverages and Tobacco index increased by 1.4 percent.
- The Food and Non Alcoholic Beverages index also increased by 0.9 percent.
- The Average Annual Inflation for the year ended June 2014 was negative 1.2 percent.

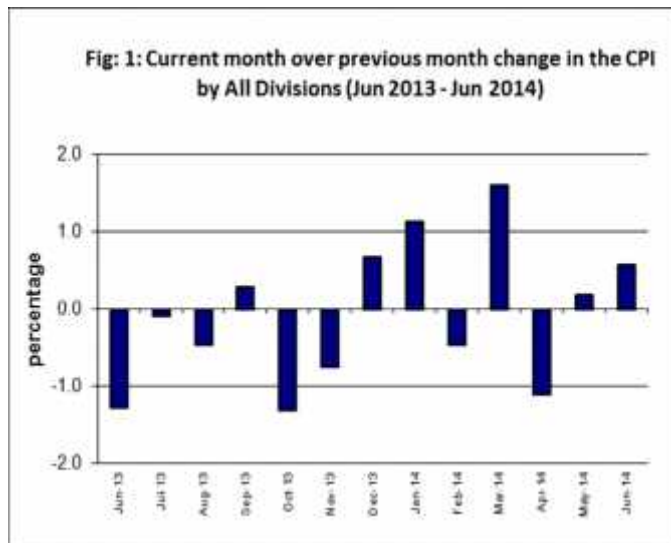
In the year to June 2014 the CPI rose 0.2 percent.

### SUMMARY

The Consumer Price Index for June 2014 was 0.6 percent higher than May 2014, and was 0.2 percent higher than June 2013.

The increase of the Imported Goods component by 1.6 percent reflects higher prices for imported food and alcohol, which were also the main contributor to the increase of 0.6 percent in the All Items Consumer Price Index.

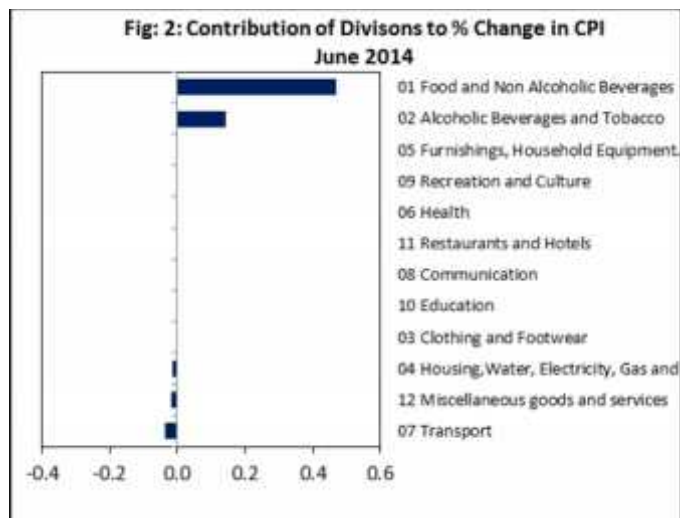
The Local Goods Component recorded a decrease of 0.2 percent from May 2014. Figure 1 shows the month to month percentage changes in the Consumer Price Index by all Divisions from June 2013 to June 2014.



Source : Samoa Bureau of Statistics

## Total All Divisions Contribution

Food and Non Alcoholic Beverages along with Alcoholic Beverages and Tobacco divisions were the main contributors to the overall increase of 0.6 percent in the All Division Consumer Price Index.



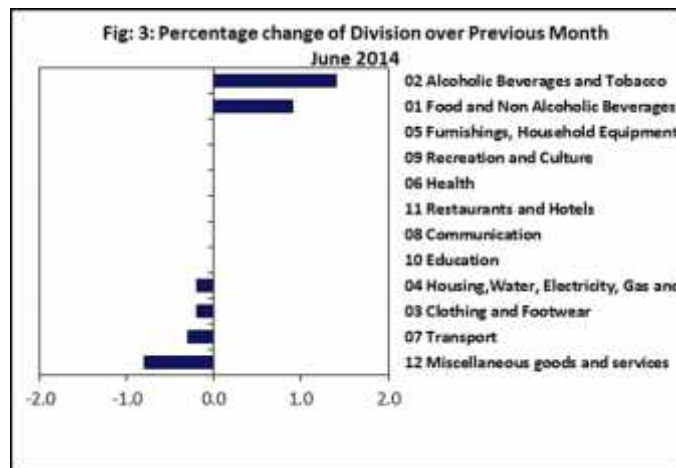
Source : Samoa Bureau of Statistics

## Consumer Price Index (% Change)

The Alcoholic Beverages and Tobacco and Food and Non Alcoholic Beverages indices recorded increases of 1.4 and 0.9 percent respectively.

On the other hand, decreases were recorded for the Miscellaneous Goods and Services with 0.8 percent and Transport with 0.3 percent, while Clothing and Footwear and Housing, Water, Electricity, Gas and other Fuels indices both registered decreases of 0.2 percent.

No changes were recorded for the Furnishing, Household Equipment and Maintenance, Health, Communication, Recreation and culture, Education and Restaurants indices. Graphically presented in Fig 3 is the June 2014 percentage change for all divisions from May 2014.



Source : Samoa Bureau of Statistics

## Imported Goods Component

The Imported Goods Component of the Consumer Price Index registered an increase of 1.6 percent when compared to the previous month. This increase was mainly due to higher prices recorded for rice, mutton flap and spirit nip (vodka and whisky).

## Local Goods Component

Decreased prices recorded for fresh fish (piece), yam and tomatoes have resulted in the 0.2 percent decrease in the Local Good Component.

## Alcoholic Beverages and Tobacco Index

An increase of 1.4 percent in the Alcoholic Beverages and Tobacco index was mainly due to higher prices recorded for spirit nip (vodka and whisky).

## Food and Non Alcoholic Beverages Index

Higher prices recorded for mutton flap, fresh fish (piece), yam and tomatoes is reflected in the 0.9 percent increase in the Food and Non Alcoholic Beverages index.



### Miscellaneous Goods and Services Index

The 0.8 percent decrease in the Miscellaneous Good and Services index was mainly due to lower prices recorded for toilet soap and hair gel.

### Transport Index

Lower prices recorded for fuel (petrol) is reflected in the 0.3 percent decrease in the Transport Index.

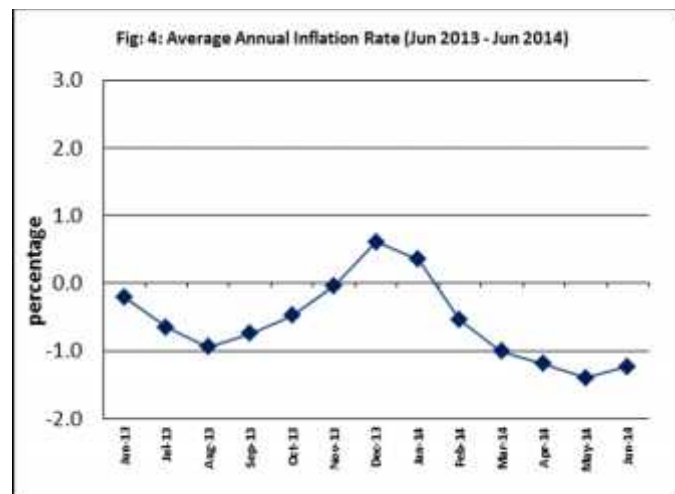
### Underlying Indices

The All Items Underlying Index for June 2014 registered an increase of 1.2 percent when compared to May 2014, and an increase of 1.6 percent when compared to June last year. The Imported Items Underlying Index recorded an increase of 1.5 percent and the Local Items Underlying Index with 0.5 percent increase.

### Average Annual Inflation Rate

The average annual inflation rate for the year ended June 2014 was negative 1.2%. For the

twelve months ending June 2013 the inflation rate was negative 0.2 percent. Presented in Fig 4 is the Average annual inflation rates (June 2013 - June 2014)



Source : Samoa Bureau of Statistics

The attached Tables and Graphs provide the user with more detailed analysis.



Date of release: 9<sup>th</sup> July 2014.

The next Consumer Price Index will be released on 11<sup>th</sup> August 2014.

**Table 1. CONSUMER PRICE INDEX.**  
(Base Period : Average Prices August 2010 = 100)

Group	All Items	Food and Non Alcoholic Beverages	Alcoholic Beverages and Tobacco	Clothing and Footwear	Housing, Water, Electricity, Gas and other Fuels	Furnishings, Household Equipment, and Maintenance	Health	Transport	Communication	Recreation and Culture	Education	Restaurants	Miscellaneous goods and services
<i>Weights</i>	<b>1000</b>	<b>502</b>	<b>97</b>	<b>17</b>	<b>78</b>	<b>31</b>	<b>16</b>	<b>97</b>	<b>58</b>	<b>34</b>	<b>31</b>	<b>15</b>	<b>24</b>
Ave - 2011	105.7	108.2	105.0	103.9	106.5	100.5	98.7	106.6	100.0	98.1	100.0	100.0	100.3
Ave - 2012	107.9	110.3	107.8	113.1	108.9	100.4	96.0	111.2	100.0	98.0	101.6	100.0	100.9
Ave - 2013	108.6	111.1	110.8	113.5	107.2	101.4	96.1	111.8	100.0	98.5	101.6	101.6	100.7
2013													
June	107.8	109.7	111.7	112.9	105.3	101.9	96.7	111.7	100.0	98.9	101.6	100.0	101.1
July	107.7	108.7	111.7	112.6	107.0	101.9	96.8	114.4	100.0	98.9	101.6	100.0	101.1
August	107.2	107.9	111.7	112.7	107.1	101.6	96.1	113.8	100.0	98.9	101.6	100.0	100.7
September	107.5	107.7	111.7	112.7	108.5	101.1	96.1	116.5	100.0	98.9	101.6	100.0	100.7
October	106.1	105.9	111.7	114.4	108.7	100.9	96.1	110.7	100.0	98.9	101.6	100.0	101.6
November	105.3	104.6	111.7	114.5	108.6	101.0	96.1	108.3	100.0	98.9	101.6	109.4	100.4
December	106.0	105.8	112.3	113.8	108.4	100.5	93.2	109.4	100.0	98.9	101.6	109.4	99.4
2014													
January	107.2	106.9	112.3	112.4	108.4	100.2	106.9	114.6	100.0	98.9	101.6	109.4	100.0
February	106.7	105.3	114.3	113.7	108.5	100.6	106.9	115.7	100.0	98.9	101.6	109.4	100.0
March	108.4	109.4	114.6	113.2	108.4	100.5	106.9	111.3	100.0	98.9	101.6	109.4	100.0
April	107.2	106.7	113.2	120.1	108.4	99.1	106.9	113.7	100.0	99.0	101.6	109.4	98.5
May	107.4	105.6	113.2	119.5	110.7	99.9	106.9	119.9	100.0	99.0	101.6	109.4	99.0
June (P)	108.0	106.6	114.8	119.3	110.5	99.9	106.9	119.5	100.0	99.0	101.6	109.4	98.2
<b>Percentage Change (P)</b>													
Jun 2014 over May 2014	0.6	0.9	1.4	-0.2	-0.2	0.0	0.0	-0.3	0.0	0.0	0.0	0.0	-0.8
Jun 2014 over Jun 2013	0.2	-2.8	2.8	5.7	4.9	-2.0	10.5	7.0	0.0	0.1	0.0	9.4	-2.9
<b>ALL ITEMS UNDERLYING INDEX</b>													
Group	All Items	Food and Non Alcoholic Beverages	Alcoholic Beverages and Tobacco	Clothing and Footwear	Housing, Water, Electricity, Gas and other Fuels	Furnishings, Household Equipment, and Maintenance	Health	Transport	Communication	Recreation and Culture	Education	Restaurants	Miscellaneous goods and services
<i>Weights</i>	<b>480</b>	<b>348</b>	<i>n.a.</i>	<b>17</b>	<b>17</b>	<b>31</b>	<b>14</b>	<b>13</b>	<i>n.a.</i>	<b>2</b>	<i>n.a.</i>	<b>15</b>	<b>24</b>
Ave - 2011	103.4	104.8		103.9	99.8	100.5	98.5	94.9		89.3		100.0	100.3
Ave - 2012	104.3	105.3		113.1	101.7	100.4	95.4	100.1		86.8		100.0	100.9
Ave - 2013	104.7	106.0		113.5	99.4	101.4	95.5	97.4		87.0		101.6	100.7
2013													
June	104.6	106.0		112.9	96.7	101.9	96.2	96.4		87.0		100.0	101.1
July	105.2	106.7		112.6	100.1	101.9	96.3	96.4		87.0		100.0	101.1
August	104.9	106.3		112.7	100.4	101.6	95.5	96.4		87.0		100.0	100.7
September	105.2	106.8		112.7	99.5	101.1	95.5	96.4		87.0		100.0	100.7
October	104.5	105.7		114.4	100.1	100.9	95.5	96.4		87.0		100.0	101.6
November	104.7	105.6		114.5	100.1	101.0	95.5	96.4		87.0		109.4	100.4
December	104.9	106.2		113.8	99.4	100.5	92.1	96.4		87.0		109.4	99.4
2014													
January	105.4	107.0		112.4	98.8	100.2	92.7	95.6		87.0		109.4	100.0
February	105.0	106.4		113.7	98.9	100.6	92.7	95.6		87.0		109.4	100.0
March	105.1	106.5		113.2	98.9	100.5	92.7	95.6		87.0		109.4	100.0
April	105.0	106.3		120.1	98.9	99.1	92.7	95.6		88.1		109.4	98.5
May	105.0	106.2		119.5	99.1	99.9	92.7	95.6		88.1		109.4	99.0
June (P)	106.3	108.1		119.3	98.8	99.9	92.7	95.6		88.1		109.4	98.2
<b>Percentage Change (P)</b>													
Jun 2014 over May 2014	1.2	1.8		-0.2	-0.3	0.0	0.0	0.0		0.0		0.0	-0.8
Jun 2014 over Jun 2013	1.6	2.0		5.6	2.1	-1.9	-3.7	-0.8		1.2		9.4	-2.8

Source : Samoa Bureau Statistics  
(P): Provisional figures  
Note: n.a. Not applicable



Commodities	Weight	Unit	2013			2014		
			Apr	May	June	Apr	May	Jun (P)
<b>Health</b>								
Paracetamol	3.7	20tablet	1.88	1.88	1.93	1.75	1.75	1.75
Magnesium Trisilicate	3.6	120mls	7.83	7.83	8.00	7.30	7.30	7.30
Cough Mixture	3.6	100mls	9.95	9.95	9.50	9.40	9.40	9.40
Hospital Charge	2.1	per night	5.00	5.00	5.00	10.00	10.00	10.00
<b>Transport</b>								
Petrol	39.1	ltr	3.05	2.99	2.94	3.11	3.03	3.02
Labour charge car repair	9.1	min crg	51.67	51.67	51.67	51.67	51.67	51.67
Air Fares Apia-Auckland-Apia	7.8	return	1599.60	1619.93	1920.95	1723.45	1857.20	1813.20
Air Fares Fagalii-Pago	7.8	return	370.00	370.00	370.00	380.00	380.00	380.00
Bus Fares Apia-Motootua Hosp	3.7	per trip	0.80	0.80	0.80	0.80	1.30	1.30
Bus Fares Apia-Malua	3.7	per trip	2.00	2.00	2.00	2.00	2.60	2.60
Bus Fares Apia-Falefa	3.7	per trip	3.20	3.20	3.20	3.20	3.70	3.70
Car Tyre 205/70R(14)	3.7	size 14	227.50	220.00	220.00	215.00	215.00	215.00
Taxi Fares PO-Motootua Hosp	3.3	per trip	3.50	3.50	3.50	3.50	4.80	4.80
Taxi Fares Po-Malua	3.3	per trip	26.10	26.10	26.10	26.10	31.30	31.30
Taxi Fares PO-Falefa	3.3	per trip	36.00	36.00	36.00	36.00	43.20	43.20
Diesel	2.8	ltr	3.06	3.03	3.00	3.17	3.07	3.06
Car Registration 1500-2000 cc	2.0	ann rate	290.00	290.00	290.00	290.00	290.00	290.00
Boat Fares Mulifanua-Salelologa	1.3	one way	12.00	12.00	12.00	12.00	12.00	12.00
<b>Communication</b>								
Telephone local call	23.6	1 min	0.06	0.06	0.06	0.06	0.06	0.06
Telephone NZ call	10.6	3 mins	2.55	2.55	2.55	2.55	2.55	2.55
Telephone USA call	10.6	3 mins	5.37	5.37	5.37	5.35	5.35	5.35
Telephone Rental	10.6	monthly	24.15	24.15	24.15	24.15	24.15	24.15
Internet Prepaid Rates (a)	2.6	30 mins	5.10	5.10	5.10	5.10	5.10	5.10
PO Box rental (small box)	0.2	ann rate	80.00	80.00	80.00	80.00	80.00	80.00
<b>Recreation and Culture</b>								
National Lotto (a)	23.6	ticket	7.00	7.00	7.00	7.00	7.00	7.00
Tattslotto	3.8	ticket	13.50	13.50	13.50	13.50	13.50	13.50
News Paper Samoa Observer	2.7	each	2.50	2.50	2.50	2.50	2.50	2.50
<b>Education</b>								
School Fees Primary	10.5	Yr 4	10.00	10.00	10.00	10.00	10.00	10.00
School Fees Secondary	8.1	Yr 10	50.00	50.00	50.00	50.00	50.00	50.00
School Fees Primary	7.6	Yr 8	20.00	20.00	20.00	20.00	20.00	20.00
School Fees (NUS registration)	5.1	tertiary	265.00	265.00	265.00	265.00	265.00	265.00
<b>Restaurants</b>								
Meal (Fish & Chips)	11.0	1 serve	8.00	8.00	8.00	9.00	9.00	9.00
Meal (Pinati)	3.7	1 serve	3.00	3.00	3.00	3.00	3.00	3.00
<b>Miscellaneous goods and services</b>								
Toilet soap	7.6	90g	1.10	1.11	1.11	1.07	1.09	1.07
Diapers (16kg & over )	7.2	24pkt	37.92	37.82	37.80	37.73	37.73	37.73
Toilet Paper	3.6	roll	0.95	1.00	0.98	0.90	0.90	0.90

Source : Samoa Bureau Statistics

(a) : New commodity from August 2010

(b) : Average price across all brands

(P) : Provisional figures

**Table 3. IMPORTED GOODS COMPONENT OF THE CONSUMER PRICE INDEX**  
(Base Period : Average Prices August 2010 = 100)

Group	All Items	Food and Non Alcoholic Beverages	Alcoholic Beverages and Tobacco	Clothing and Footwear	Housing, Water, Electricity, Gas and other Fuels	Furnishings, Household Equipment and Maintenance	Health	Transport	Communication	Recreation and Culture	Education	Restaurants	Miscellaneous goods and services
<b>Weights</b>	<b>424.8</b>	<b>272.0</b>	<b>17.1</b>	<b>10.9</b>	<b>17.5</b>	<b>22.7</b>	<b>12.8</b>	<b>46.8</b>	<b>n.a.</b>	<b>1.3</b>	<b>n.a.</b>	<b>n.a.</b>	<b>23.7</b>
Ave - 2011	105.5	105.6	112.9	102.5	101.2	101.1	98.4	111.6		81.1			100.3
Ave - 2012	106.7	105.7	113.9	110.6	103.8	102.1	95.1	118.6		76.7			100.9
Ave - 2013	106.9	106.2	112.1	110.9	101.7	103.0	95.2	119.7		77.0			100.7
2013													
June	106.4	106.1	111.9	110.0	98.8	103.1	96.0	115.8		77.0			101.1
July	107.6	106.9	111.9	109.5	102.5	103.2	96.0	120.7		77.0			101.1
August	107.5	106.4	111.9	109.6	103.2	102.7	95.2	123.6		77.0			100.7
September	108.0	107.1	111.9	109.6	102.0	102.9	95.2	123.9		77.0			100.7
October	107.0	106.0	111.9	112.3	102.7	102.7	95.2	120.9		77.0			101.6
November	106.7	105.8	111.5	112.5	102.4	103.5	95.2	119.4		77.0			100.4
December	106.9	106.7	115.2	111.4	101.4	103.0	91.6	116.7		77.0			99.4
2014													
January	107.7	107.6	115.2	109.2	101.2	102.4	92.1	119.3		77.0			100.0
February	107.9	106.8	115.2	111.1	102.0	102.9	92.1	124.2		77.0			100.0
March	107.6	107.1	115.2	110.4	101.2	102.7	92.1	121.3		77.0			100.0
April	106.9	106.7	106.0	111.1	101.2	100.8	92.1	121.6		78.9			98.5
May	106.6	106.6	106.0	110.1	100.8	101.9	92.1	118.7		78.9			99.0
June (P)	108.3	108.8	115.2	109.8	100.3	102.0	92.1	118.4		78.9			98.2
<b>Percentage Change (P)</b>													
Jun 2014 over May 2014	1.6	2.1	8.7	-0.3	-0.5	0.0	0.0	-0.3		0.0			-0.8
Jun 2014 over Jun 2013	1.8	2.6	3.0	-0.2	1.6	-1.1	-4.0	2.2		2.5			-2.8
<b>IMPORTED ITEMS UNDERLYING INDEX</b>													
Group	All Items	Food and Non Alcoholic Beverages	Alcoholic Beverages and Tobacco	Clothing and Footwear	Housing, Water, Electricity, Gas and other Fuels	Furnishings, Household Equipment and Maintenance	Health	Transport	Communication	Recreation and Culture	Education	Restaurants	Miscellaneous goods and services
<b>Weights</b>	<b>362.8</b>	<b>272.0</b>	<b>n.a.</b>	<b>10.9</b>	<b>15.4</b>	<b>22.7</b>	<b>12.8</b>	<b>4.0</b>	<b>n.a.</b>	<b>1.3</b>	<b>n.a.</b>	<b>n.a.</b>	<b>23.7</b>
Ave - 2011	104.3	105.6		102.5	99.4	101.1	98.4	109.2		81.1			100.3
Ave - 2012	104.9	105.7		110.6	101.4	102.1	95.1	122.0		76.7			100.9
Ave - 2013	105.0	106.2		110.9	98.9	103.0	95.2	113.2		77.0			100.7
2013													
June	104.9	106.1		110.0	96.2	103.1	96.0	109.9		77.0			101.1
July	105.6	106.9		109.5	99.8	103.2	96.0	109.9		77.0			101.1
August	105.2	106.4		109.6	100.2	102.7	95.2	109.9		77.0			100.7
September	105.7	107.1		109.6	98.9	102.9	95.2	109.7		77.0			100.7
October	104.9	106.0		112.3	99.4	102.7	95.2	109.7		77.0			101.6
November	104.8	105.8		112.5	99.2	103.5	95.2	109.7		77.0			100.4
December	105.2	106.7		111.4	98.5	103.0	91.6	109.7		77.0			99.4
2014													
January	105.8	107.6		109.2	97.9	102.4	92.1	107.2		77.0			100.0
February	105.3	106.8		111.1	97.9	102.9	92.1	107.2		77.0			100.0
March	105.4	107.1		110.4	97.9	102.7	92.1	107.2		77.0			100.0
April	105.0	106.7		111.1	97.9	100.8	92.1	107.1		78.9			98.5
May	105.0	106.6		110.1	98.1	101.9	92.1	107.2		78.9			99.0
June (P)	106.6	108.8		109.8	97.8	102.0	92.1	107.2		78.9			98.2
<b>Percentage Change (P)</b>													
Jun 2014 over May 2014	1.5	2.1		-0.3	-0.4	0.0	0.0	0.0		0.0			-0.8
Jun 2014 over Jun 2013	1.6	2.6		-0.2	1.7	-1.1	-4.0	-2.4		2.5			-2.8

Source : Samoa Bureau Statistics  
(P); Provisional figures  
Note: n.a. Not applicable

**Table 4. LOCAL GOODS COMPONENT OF THE CONSUMER PRICE INDEX**  
(Base Period : Average Prices August 2010 = 100)

Group	All Items	Food and Non Alcoholic Beverages	Alcoholic Beverages and Tobacco	Clothing and Footwear	Housing, Water, Electricity, Gas and other Fuels	Furnishings, Household Equipment and Maintenance	Health	Transport	Communication	Recreation and Culture	Education	Restaurants	Miscellaneous goods and services
<b>Weights</b>	<b>575.2</b>	<b>229.8</b>	<b>79.6</b>	<b>6.4</b>	<b>60.6</b>	<b>8.6</b>	<b>3.0</b>	<b>50.3</b>	<b>58.2</b>	<b>32.7</b>	<b>31.3</b>	<b>14.7</b>	<b>n.a.</b>
Ave - 2011	105.9	111.2	103.3	106.4	108.0	98.9	100.0	101.8	100.0	98.7	100.0	100.0	
Ave - 2012	108.8	115.8	106.5	117.3	110.3	95.9	100.0	104.2	100.0	98.8	101.6	100.0	
Ave - 2013	109.8	116.9	110.5	117.9	108.8	97.1	100.0	104.4	100.0	99.4	101.6	101.6	
2013													
June	108.8	113.8	111.6	117.9	107.2	98.6	100.0	107.9	100.0	99.8	101.6	100.0	
July	107.8	110.9	111.6	117.9	108.2	98.6	100.0	108.6	100.0	99.8	101.6	100.0	
August	107.0	109.7	111.6	117.9	108.2	98.6	100.0	104.7	100.0	99.8	101.6	100.0	
September	107.1	108.4	111.6	117.9	110.4	96.2	100.0	109.6	100.0	99.8	101.6	100.0	
October	105.4	105.9	111.7	117.9	110.4	96.2	100.0	101.2	100.0	99.8	101.6	100.0	
November	104.2	103.1	111.7	117.9	110.4	94.2	100.0	98.0	100.0	99.8	101.6	109.4	
December	105.3	104.8	111.7	117.9	110.4	94.2	100.0	102.7	100.0	99.8	101.6	109.4	
2014													
January	106.8	106.0	111.7	117.9	110.4	94.5	170.0	110.2	100.0	99.8	101.6	109.4	
February	105.9	103.5	114.1	117.9	110.4	94.5	170.0	107.7	100.0	99.8	101.6	109.4	
March	108.9	112.1	114.5	117.9	110.4	94.5	170.0	102.0	100.0	99.8	101.6	109.4	
April	107.3	106.7	114.7	135.5	110.4	94.5	170.0	106.3	100.0	99.8	101.6	109.4	
May	108.0	104.4	114.7	135.5	113.5	94.5	170.0	121.0	100.0	99.8	101.6	109.4	
June (P)	107.8	104.0	114.7	135.5	113.5	94.5	170.0	120.5	100.0	99.8	101.6	109.4	
<b>Percentage Change (P)</b>													
Jun 2014 over May 2014	-0.2	-0.4	0.0	0.0	0.0	0.0	0.0	-0.4	0.0	0.0	0.0	0.0	0.0
Jun 2014 over Jun 2013	-0.9	-8.6	2.7	14.9	5.8	-4.2	70.0	11.7	-0.1	0.0	0.0	9.4	
<b>LOCAL ITEMS UNDERLYING INDEX</b>													
Group	All Items	Food and Non Alcoholic Beverages	Alcoholic Beverages and Tobacco	Clothing and Footwear	Housing, Water, Electricity, Gas and other Fuels	Furnishings, Household Equipment and Maintenance	Health	Transport	Communication	Recreation and Culture	Education	Restaurants	Miscellaneous goods and services
<b>Weights</b>	<b>117.4</b>	<b>75.5</b>	<b>n.a.</b>	<b>6.4</b>	<b>1.2</b>	<b>8.6</b>	<b>0.9</b>	<b>9.1</b>	<b>n.a.</b>	<b>1.0</b>	<b>n.a.</b>	<b>14.7</b>	<b>n.a.</b>
Ave - 2011	100.7	102.0		106.4	105.3	98.9	100.0	88.6		100.0		100.0	
Ave - 2012	102.5	103.9		117.3	105.2	95.9	100.0	90.5		100.0		100.0	
Ave - 2013	103.8	105.5		117.9	105.9	97.1	100.0	90.5		100.0		101.6	
2013													
June	103.8	105.6		117.9	104.2	98.6	100.0	90.5		100.0		100.0	
July	103.9	105.9		117.9	103.6	98.6	100.0	90.5		100.0		100.0	
August	104.0	106.0		117.9	103.4	98.6	100.0	90.5		100.0		100.0	
September	103.7	105.6		117.9	107.3	96.2	100.0	90.5		100.0		100.0	
October	103.2	105.0		117.9	108.5	96.2	100.0	90.5		100.0		100.0	
November	104.2	104.9		117.9	110.8	94.2	100.0	90.5		100.0		109.4	
December	104.1	104.6		117.9	110.8	94.2	100.0	90.5		100.0		109.4	
2014													
January	104.3	104.3		117.9	110.6	94.5	100.0	90.5		100.0		109.4	
February	104.3	104.3		117.9	111.6	94.5	100.0	90.5		100.0		109.4	
March	103.9	103.9		117.9	111.6	94.5	100.0	90.5		100.0		109.4	
April	105.3	105.3		135.5	111.6	94.5	100.0	90.5		100.0		109.4	
May	105.2	105.2		135.5	111.6	94.5	100.0	90.5		100.0		109.4	
June (P)	105.7	105.7		135.5	111.6	94.5	100.0	90.5		100.0		109.4	
<b>Percentage Change (P)</b>													
Jun 2014 over May 2014	0.5	0.5		0.0	0.0	0.0	0.0	0.0		0.0		0.0	
Jun 2014 over Jun 2013	1.8	0.1		14.9	7.1	-4.2	0.0	0.0		0.0		9.4	

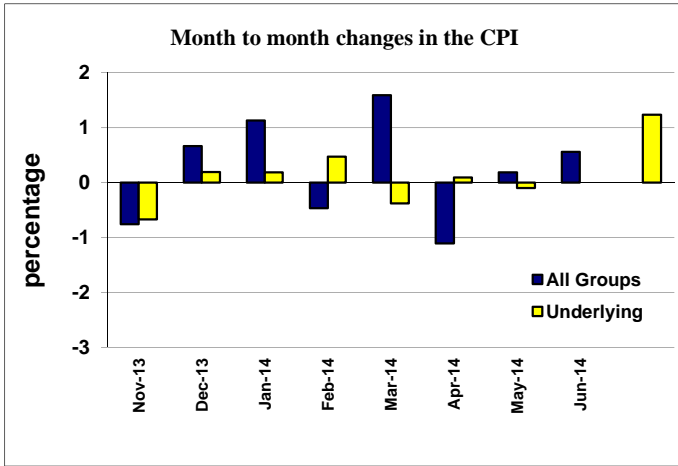
Source : Samoa Bureau Statistics

(P): Provisional figures

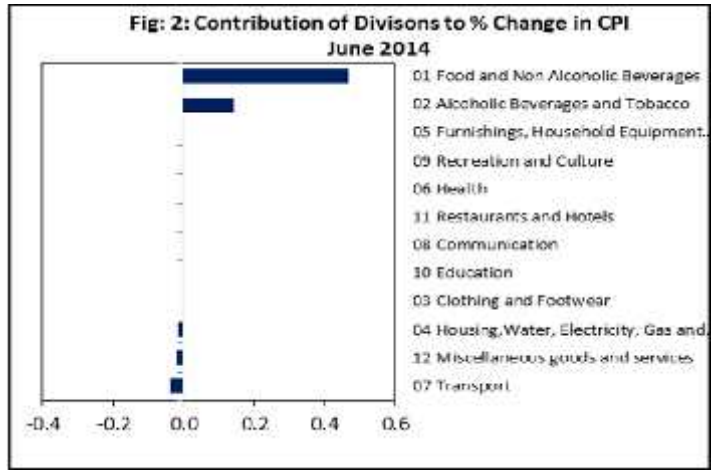
Note: n.a. Not applicable



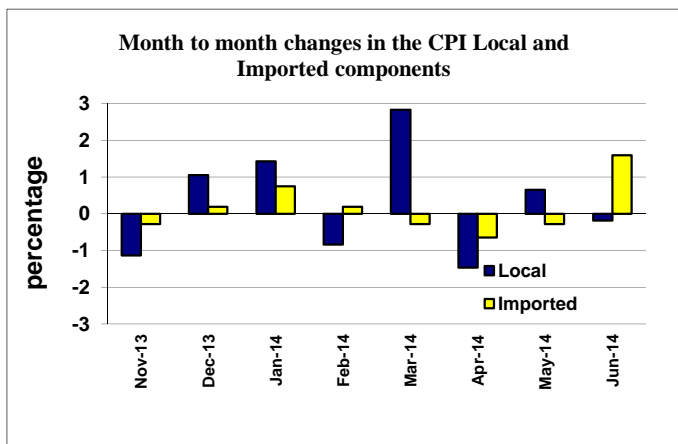
Graph.1



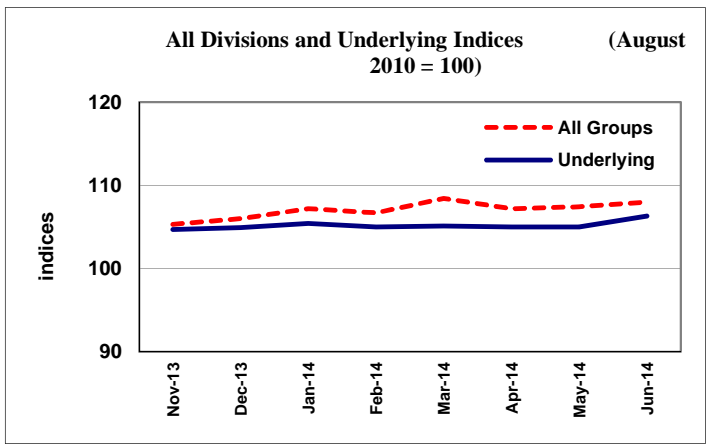
Graph.2



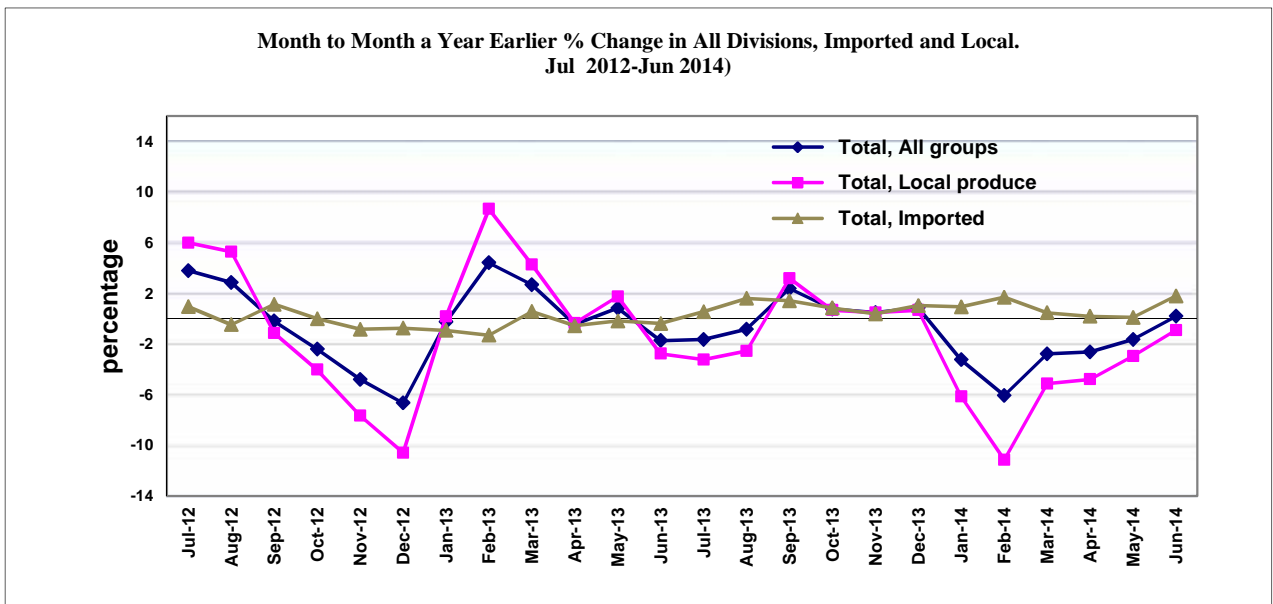
Graph.3



Graph.4



Graph 5



Source: Samoa Bureau of Statistics