

Please address all correspondence
To Government Statistician
In reply, please quote the file reference



File Ref: CPI 05/14

GOVERNMENT OF SAMOA

SAMOA BUREAU OF STATISTICS

CONSUMER PRICE INDEX May 2014

Key findings:

The Consumer Price Index for May 2014 increased by 0.2 percent compared to the previous month.

- Transport index rose by 5.5 percent as regulated fares for public transportation increased.
- Housing, Water, Electricity, Gas and other Fuels index also increased by 2.1 percent.
- The Food and Non Alcoholic Beverages index decreased by 1.0 percent, driven down by lower prices for market staples and fresh fish.
- The Average Annual Inflation for the year ended May 2014 down by 1.4 percent.

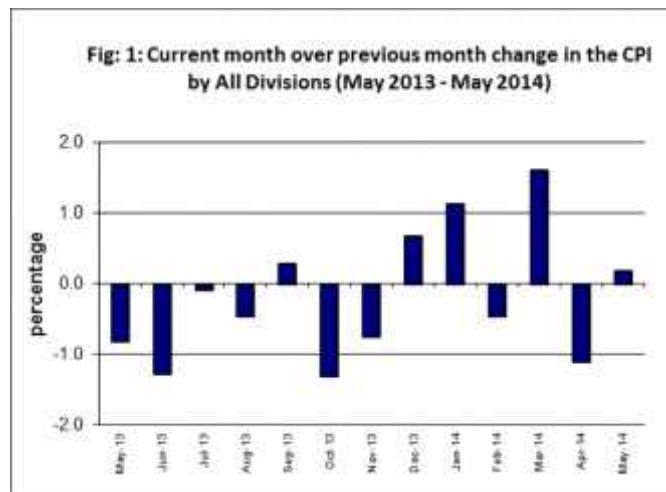
The CPI fell 1.6 percent from May 2013.

SUMMARY

The Consumer Price Index for May 2014 was 0.2 percent higher than in April 2014 and was 1.6 percent lower than May 2013.

The increase of the Local Goods component by 0.7 percent reflects higher prices for taxi and bus fares, which was also the main contributor to the increase of 0.2 percent in the All Items Consumer Price Index.

The Imported Component recorded a decrease of 0.3 percent over April 2014. Figure 1 shows the month to month percentage changes in the Consumer Price Index by all Divisions from May 2013 to May 2014.

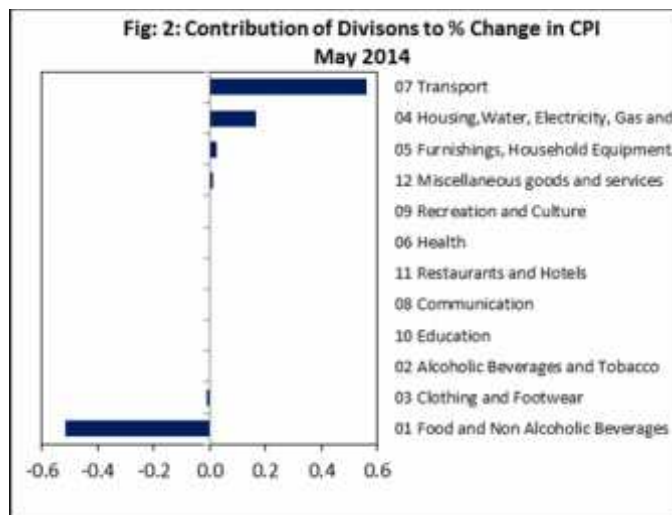


Source : Samoa Bureau of Statistics

Total All Divisions Contribution

Transport division along with Housing, Water, Electricity, Gas and other Fuels were the main contributors to the overall increase of 0.2 percent in the All Division Consumer Price Index.

On the other hand, there was offsetting contributions from Food and Non Alcoholic Beverages division Index with 0.5 percent.



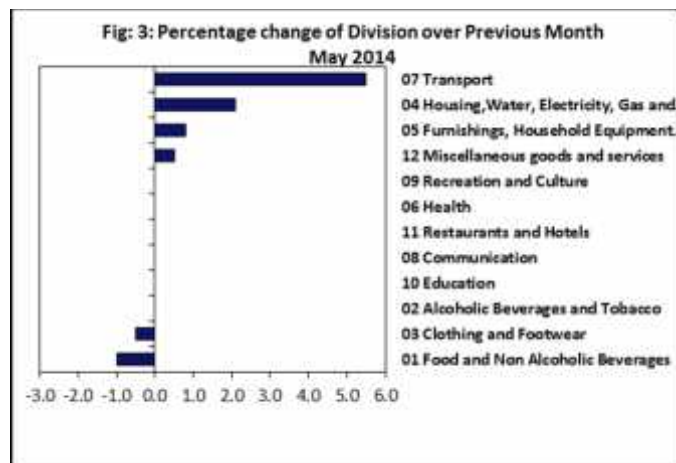
Source : Samoa Bureau of Statistics

Consumer Price Index (% Change)

The increase recorded month on month for the Transport index with 5.5 percent, Housing, Water, Electricity, Gas and other Fuels index with 2.1 percent, Furnishing, Household Equipment and Maintenance index with 0.8 percent and Miscellaneous Goods and Services index with 0.5 percent.

On the other hand, Food index recorded a decrease of 1.0 percent. Clothing and Footwear also decrease of 0.5 percent.

No changes were recorded for the Alcoholic Beverages and Tobacco, Health, Communication, Recreation and Culture, Education and Restaurants indices. Graphically presented in Fig 3 is the May 2014 percentage change for all divisions from May 2013.



Source : Samoa Bureau of Statistics

Local Goods Component

The Local Goods Component of the Consumer Price Index registered an increase of 0.7 percent when compared to the previous month. This increase was mainly due to higher prices recorded for electricity and taxi and bus fares.

Imported Goods Component

The Imported Goods Component of the Consumer Price Index registered a decrease of 0.3 percent when compared to the previous month. This decrease was mainly due to lower prices recorded for fuel (petrol and diesel).

Transport Index

An increase of 5.5 percent in the Transport index is a reflection of the higher prices recorded for taxi and bus fares.

Housing, Water, Electricity, Gas and other Fuels Index

Higher prices recorded for electricity kwh is resulted in the 2.1 percent increase in the Housing, Water, Electricity, Gas and other Fuels index.

Furnishings, Household Equipment, and Maintenance Index

The 0.8 percent increase in the Furnishing, Household, Equipment and Maintenance Index was a result of the higher prices recorded for sheeting material and bath towel.

Miscellaneous Goods and Services Index

The higher prices recorded for toilet soap is reflected in the 0.5 percent increase in the Miscellaneous Good and Services index.

Food and Non Alcoholic Beverages Index

Lower prices recorded for taro, fresh fish (piece and string) and breadfruit is reflected in the 1.0 percent decrease in the Food and Non Alcoholic Beverages index.



Clothing and Footwear Index

Decreased prices recorded for dressing material and jandals have resulted in the 0.5 percent decrease in the Clothing and Footwear index.

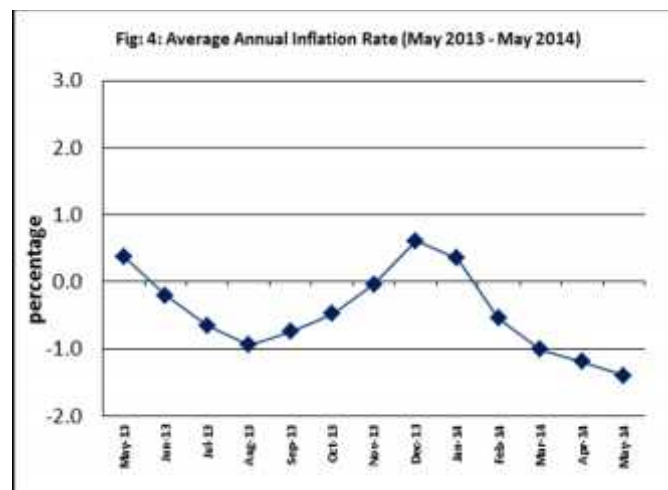
Underlying Indices

The All Items Underlying Index for May 2014 registered no change when compared to April 2014, and an increase of 0.4 percent when

compared to May 2013. The Local Items Underlying Index recorded a decrease of 0.1 percent while the Imported Items Underlying Index recorded no change from the previous month.

Average Annual Inflation Rate

The average annual inflation rate for the year ended May 2014 was negative 1.4%. For the twelve months ending May 2013 the inflation rate was 0.4 percent. Presented in Fig 4 is the Average annual inflation rates (May 2013 - May 2014).



Source : Samoa Bureau of Statistics

The attached Tables and Graphs provide the user with more detailed analysis.



Date of release: 12th June 2014.

The next Consumer Price Index will be released on 9th July 2014.

Table 1. CONSUMER PRICE INDEX.
(Base Period : Average Prices August 2010 = 100)

Group	All Items	Food and Non Alcoholic Beverages	Alcoholic Beverages and Tobacco	Clothing and Footwear	Housing, Water, Electricity, Gas and other Fuels	Furnishings, Household Equipment, and Maintenance	Health	Transport	Communication	Recreation and Culture	Education	Restaurants	Miscellaneous goods and services
<i>Weights</i>	1000	502	97	17	78	31	16	97	58	34	31	15	24
Ave - 2011	105.7	108.2	105.0	103.9	106.5	100.5	98.7	106.6	100.0	98.1	100.0	100.0	100.3
Ave - 2012	107.9	110.3	107.8	113.1	108.9	100.4	96.0	111.2	100.0	98.0	101.6	100.0	100.9
Ave - 2013	108.6	111.1	110.8	113.5	107.2	101.4	96.1	111.8	100.0	98.5	101.6	101.6	100.7
2013													
May	109.2	112.7	110.5	113.1	107.5	101.4	96.9	110.6	100.0	98.0	101.6	100.0	101.5
June	107.8	109.7	111.7	112.9	105.3	101.9	96.7	111.7	100.0	98.9	101.6	100.0	101.1
July	107.7	108.7	111.7	112.6	107.0	101.9	96.8	114.4	100.0	98.9	101.6	100.0	101.1
August	107.2	107.9	111.7	112.7	107.1	101.6	96.1	113.8	100.0	98.9	101.6	100.0	100.7
September	107.5	107.7	111.7	112.7	108.5	101.1	96.1	116.5	100.0	98.9	101.6	100.0	100.7
October	106.1	105.9	111.7	114.4	108.7	100.9	96.1	110.7	100.0	98.9	101.6	100.0	101.6
November	105.3	104.6	111.7	114.5	108.6	101.0	96.1	108.3	100.0	98.9	101.6	109.4	100.4
December	106.0	105.8	112.3	113.8	108.4	100.5	93.2	109.4	100.0	98.9	101.6	109.4	99.4
2014													
January	107.2	106.9	112.3	112.4	108.4	100.2	106.9	114.6	100.0	98.9	101.6	109.4	100.0
February	106.7	105.3	114.3	113.7	108.5	100.6	106.9	115.7	100.0	98.9	101.6	109.4	100.0
March	108.4	109.4	114.6	113.2	108.4	100.5	106.9	111.3	100.0	98.9	101.6	109.4	100.0
April	107.2	106.7	113.2	120.1	108.4	99.1	106.9	113.7	100.0	99.0	101.6	109.4	98.5
May (P)	107.4	105.6	113.2	119.5	110.7	99.9	106.9	119.9	100.0	99.0	101.6	109.4	99.0
Percentage Change (P)													
May 2014 over Apr 2014	0.2	-1.0	0.0	-0.5	2.1	0.8	0.0	5.5	0.0	0.0	0.0	0.0	0.5
May 2014 over May 2013	-1.6	-6.3	2.4	5.7	3.0	-1.5	10.3	8.4	0.0	1.0	0.0	9.4	-2.5
ALL ITEMS UNDERLYING INDEX													
Group	All Items	Food and Non Alcoholic Beverages	Alcoholic Beverages and Tobacco	Clothing and Footwear	Housing, Water, Electricity, Gas and other Fuels	Furnishings, Household Equipment, and Maintenance	Health	Transport	Communication	Recreation and Culture	Education	Restaurants	Miscellaneous goods and services
<i>Weights</i>	480	348	<i>n.a.</i>	17	17	31	14	13	<i>n.a.</i>	2	<i>n.a.</i>	15	24
Ave - 2011	103.4	104.8		103.9	99.8	100.5	98.5	94.9		89.3		100.0	100.3
Ave - 2012	104.3	105.3		113.1	101.7	100.4	95.4	100.1		86.8		100.0	100.9
Ave - 2013	104.7	106.0		113.5	99.4	101.4	95.5	97.4		87.0		101.6	100.7
2013													
May	104.6	105.8		113.1	99.5	101.4	96.4	96.4		87.0		100.0	101.5
June	104.6	106.0		112.9	96.7	101.9	96.2	96.4		87.0		100.0	101.1
July	105.2	106.7		112.6	100.1	101.9	96.3	96.4		87.0		100.0	101.1
August	104.9	106.3		112.7	100.4	101.6	95.5	96.4		87.0		100.0	100.7
September	105.2	106.8		112.7	99.5	101.1	95.5	96.4		87.0		100.0	100.7
October	104.5	105.7		114.4	100.1	100.9	95.5	96.4		87.0		100.0	101.6
November	104.7	105.6		114.5	100.1	101.0	95.5	96.4		87.0		109.4	100.4
December	104.9	106.2		113.8	99.4	100.5	92.1	96.4		87.0		109.4	99.4
2014													
January	105.4	107.0		112.4	98.8	100.2	92.7	95.6		87.0		109.4	100.0
February	105.0	106.4		113.7	98.9	100.6	92.7	95.6		87.0		109.4	100.0
March	105.1	106.5		113.2	98.9	100.5	92.7	95.6		87.0		109.4	100.0
April	105.0	106.3		120.1	98.9	99.1	92.7	95.6		88.1		109.4	98.5
May (P)	105.0	106.2		119.5	99.1	99.9	92.7	95.6		88.1		109.4	99.0
Percentage Change (P)													
May 2014 over Apr 2014	0.0	-0.1		-0.5	0.2	0.8	0.0	0.0		0.0		0.0	0.5
May 2014 over May 2013	0.4	0.4		5.7	-0.4	-1.5	-3.9	-0.8		1.2		9.4	-2.4

Source : Samoa Bureau Statistics
(P): Provisional figures
Note: n.a. Not applicable

Commodities	Weight	Unit	2013			2014		
			Mar	Apr	May	Mar	Apr	May (P)
Health								
Paracetamol	3.7	20tablet	1.75	1.88	1.88	1.75	1.75	1.75
Magnesium Trisillicate	3.6	120mls	8.13	7.83	7.83	7.30	7.30	7.30
Cough Mixture	3.6	100mls	9.50	9.95	9.95	9.40	9.40	9.40
Hospital Charge	2.1	per night	5.00	5.00	5.00	10.00	10.00	10.00
Transport								
Petrol	39.1	ltr	3.09	3.05	2.99	3.10	3.11	3.03
Labour charge car repair	9.1	min crg	51.67	51.67	51.67	51.67	51.67	51.67
Air Fares Apia-Auckland-Apia	7.8	return	1477.00	1599.60	1619.93	1453.25	1723.45	1857.20
Air Fares Fagalii-Pago	7.8	return	370.00	370.00	370.00	380.00	380.00	380.00
Bus Fares Apia-Motootua Hosp	3.7	per trip	0.80	0.80	0.80	0.80	0.80	1.30
Bus Fares Apia-Malua	3.7	per trip	2.00	2.00	2.00	2.00	2.00	2.60
Bus Fares Apia-Falefa	3.7	per trip	3.20	3.20	3.20	3.20	3.20	3.70
Car Tyre 205/70R(14)	3.7	size 14	227.50	227.50	220.00	215.00	215.00	215.00
Taxi Fares PO-Motootua Hosp	3.3	per trip	3.50	3.50	3.50	3.50	3.50	4.80
Taxi Fares Po-Malua	3.3	per trip	26.10	26.10	26.10	26.10	26.10	31.30
Taxi Fares PO-Falefa	3.3	per trip	36.00	36.00	36.00	36.00	36.00	43.20
Diesel	2.8	ltr	3.13	3.06	3.03	3.17	3.17	3.07
Car Registration 1500-2000 cc	2.0	ann rate	290.00	290.00	290.00	290.00	290.00	290.00
Boat Fares Mulifanua-Salelologa	1.3	one way	12.00	12.00	12.00	12.00	12.00	12.00
Communication								
Telephone local call	23.6	1 min	0.06	0.06	0.06	0.06	0.06	0.06
Telephone NZ call	10.6	3 mins	2.55	2.55	2.55	2.55	2.55	2.55
Telephone USA call	10.6	3 mins	5.37	5.37	5.37	5.37	5.35	5.35
Telephone Rental	10.6	monthly	24.15	24.15	24.15	24.15	24.15	24.15
Internet Prepaid Rates (a)	2.6	30 mins	5.10	5.10	5.10	5.10	5.10	5.10
PO Box rental (small box)	0.2	ann rate	80.00	80.00	80.00	80.00	80.00	80.00
Recreation and Culture								
National Lotto (a)	23.6	ticket	7.00	7.00	7.00	7.00	7.00	7.00
Tattslotto	3.8	ticket	13.50	13.50	13.50	13.50	13.50	13.50
News Paper Samoa Observer	2.7	each	2.50	2.50	2.50	2.50	2.50	2.50
Education								
School Fees Primary	10.5	Yr 4	10.00	10.00	10.00	10.00	10.00	10.00
School Fees Secondary	8.1	Yr 10	50.00	50.00	50.00	50.00	50.00	50.00
School Fees Primary	7.6	Yr 8	20.00	20.00	20.00	20.00	20.00	20.00
School Fees (NUS registration)	5.1	tertiary	265.00	265.00	265.00	265.00	265.00	265.00
Restaurants								
Meal (Fish & Chips)	11.0	1 serve	8.00	8.00	8.00	9.00	9.00	9.00
Meal (Pinati)	3.7	1 serve	3.00	3.00	3.00	3.00	3.00	3.00
Miscellaneous goods and services								
Toilet soap	7.6	90g	1.11	1.10	1.11	1.13	1.07	1.09
Diapers (16kg & over)	7.2	24pkt	37.98	37.92	37.82	37.40	37.73	37.73
Toilet Paper	3.6	roll	0.95	0.95	1.00	0.90	0.90	0.90

Source : Samoa Bureau Statistics

(a) : New commodity from August 2010

(b) : Average price across all brands

(P) : Provisional figures

Table 3. IMPORTED GOODS COMPONENT OF THE CONSUMER PRICE INDEX
(Base Period : Average Prices August 2010 = 100)

Group	All Items	Food and Non Alcoholic Beverages	Alcoholic Beverages and Tobacco	Clothing and Footwear	Housing, Water, Electricity, Gas and other Fuels	Furnishings, Household Equipment and Maintenance	Health	Transport	Communication	Recreation and Culture	Education	Restaurants	Miscellaneous goods and services
Weights	424.8	272.0	17.1	10.9	17.5	22.7	12.8	46.8	n.a.	1.3	n.a.	n.a.	23.7
Ave - 2011	105.5	105.6	112.9	102.5	101.2	101.1	98.4	111.6		81.1			100.3
Ave - 2012	106.7	105.7	113.9	110.6	103.8	102.1	95.1	118.6		76.7			100.9
Ave - 2013	106.9	106.2	112.1	110.9	101.7	103.0	95.2	119.7		77.0			100.7
2013													
May	106.5	105.8	111.9	110.2	101.6	102.9	96.1	117.5		77.0			101.5
June	106.4	106.1	111.9	110.0	98.8	103.1	96.0	115.8		77.0			101.1
July	107.6	106.9	111.9	109.5	102.5	103.2	96.0	120.7		77.0			101.1
August	107.5	106.4	111.9	109.6	103.2	102.7	95.2	123.6		77.0			100.7
September	108.0	107.1	111.9	109.6	102.0	102.9	95.2	123.9		77.0			100.7
October	107.0	106.0	111.9	112.3	102.7	102.7	95.2	120.9		77.0			101.6
November	106.7	105.8	111.5	112.5	102.4	103.5	95.2	119.4		77.0			100.4
December	106.9	106.7	115.2	111.4	101.4	103.0	91.6	116.7		77.0			99.4
2014													
January	107.7	107.6	115.2	109.2	101.2	102.4	92.1	119.3		77.0			100.0
February	107.9	106.8	115.2	111.1	102.0	102.9	92.1	124.2		77.0			100.0
March	107.6	107.1	115.2	110.4	101.2	102.7	92.1	121.3		77.0			100.0
April	106.9	106.7	106.0	111.1	101.2	100.8	92.1	121.6		78.9			98.5
May (P)	106.6	106.6	106.0	110.1	100.8	101.9	92.1	118.7		78.9			99.0
Percentage Change (P)													
May 2014 over Apr 2014	-0.3	-0.1	0.0	-0.9	-0.4	1.1	0.0	-2.4		0.0			0.4
May 2014 over May 2013	0.1	0.8	-5.2	-0.1	-0.7	-1.0	-4.2	1.0		2.5			-2.4
IMPORTED ITEMS UNDERLYING INDEX													
Group	All Items	Food and Non Alcoholic Beverages	Alcoholic Beverages and Tobacco	Clothing and Footwear	Housing, Water, Electricity, Gas and other Fuels	Furnishings, Household Equipment and Maintenance	Health	Transport	Communication	Recreation and Culture	Education	Restaurants	Miscellaneous goods and services
Weights	362.8	272.0	n.a.	10.9	15.4	22.7	12.8	4.0	n.a.	1.3	n.a.	n.a.	23.7
Ave - 2011	104.3	105.6		102.5	99.4	101.1	98.4	109.2		81.1			100.3
Ave - 2012	104.9	105.7		110.6	101.4	102.1	95.1	122.0		76.7			100.9
Ave - 2013	105.0	106.2		110.9	98.9	103.0	95.2	113.2		77.0			100.7
2013													
May	104.8	105.8		110.2	99.2	102.9	96.1	109.8		77.0			101.5
June	104.9	106.1		110.0	96.2	103.1	96.0	109.9		77.0			101.1
July	105.6	106.9		109.5	99.8	103.2	96.0	109.9		77.0			101.1
August	105.2	106.4		109.6	100.2	102.7	95.2	109.9		77.0			100.7
September	105.7	107.1		109.6	98.9	102.9	95.2	109.7		77.0			100.7
October	104.9	106.0		112.3	99.4	102.7	95.2	109.7		77.0			101.6
November	104.8	105.8		112.5	99.2	103.5	95.2	109.7		77.0			100.4
December	105.2	106.7		111.4	98.5	103.0	91.6	109.7		77.0			99.4
2014													
January	105.8	107.6		109.2	97.9	102.4	92.1	107.2		77.0			100.0
February	105.3	106.8		111.1	97.9	102.9	92.1	107.2		77.0			100.0
March	105.4	107.1		110.4	97.9	102.7	92.1	107.2		77.0			100.0
April	105.0	106.7		111.1	97.9	100.8	92.1	107.1		78.9			98.5
May (P)	105.0	106.6		110.1	98.1	101.9	92.1	107.2		78.9			99.0
Percentage Change (P)													
May 2014 over Apr 2014	0.0	-0.1		-0.9	0.2	1.1	0.0	0.1		0.0			0.4
May 2014 over May 2013	0.2	0.8		-0.1	-1.0	-1.0	-4.2	-2.4		2.5			-2.4

Source : Samoa Bureau Statistics
(P): Provisional figures
Note: n.a. Not applicable

Table 4. LOCAL GOODS COMPONENT OF THE CONSUMER PRICE INDEX
(Base Period : Average Prices August 2010 = 100)

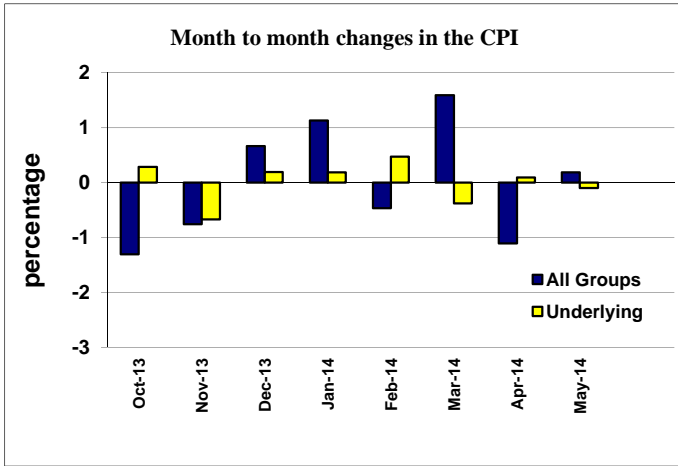
Group	All Items	Food and Non Alcoholic Beverages	Alcoholic Beverages and Tobacco	Clothing and Footwear	Housing, Water, Electricity, Gas and other Fuels	Furnishings, Household Equipment and Maintenance	Health	Transport	Communication	Recreation and Culture	Education	Restaurants	Miscellaneous goods and services
Weights	575.2	229.8	79.6	6.4	60.6	8.6	3.0	50.3	58.2	32.7	31.3	14.7	n.a.
Ave - 2011	105.9	111.2	103.3	106.4	108.0	98.9	100.0	101.8	100.0	98.7	100.0	100.0	
Ave - 2012	108.8	115.8	106.5	117.3	110.3	95.9	100.0	104.2	100.0	98.8	101.6	100.0	
Ave - 2013	109.8	116.9	110.5	117.9	108.8	97.1	100.0	104.4	100.0	99.4	101.6	101.6	
2013													
May	111.3	120.9	110.2	117.9	109.3	97.5	100.0	104.2	100.0	98.8	101.6	100.0	
June	108.8	113.8	111.6	117.9	107.2	98.6	100.0	107.9	100.0	99.8	101.6	100.0	
July	107.8	110.9	111.6	117.9	108.2	98.6	100.0	108.6	100.0	99.8	101.6	100.0	
August	107.0	109.7	111.6	117.9	108.2	98.6	100.0	104.7	100.0	99.8	101.6	100.0	
September	107.1	108.4	111.6	117.9	110.4	96.2	100.0	109.6	100.0	99.8	101.6	100.0	
October	105.4	105.9	111.7	117.9	110.4	96.2	100.0	101.2	100.0	99.8	101.6	100.0	
November	104.2	103.1	111.7	117.9	110.4	94.2	100.0	98.0	100.0	99.8	101.6	109.4	
December	105.3	104.8	111.7	117.9	110.4	94.2	100.0	102.7	100.0	99.8	101.6	109.4	
2014													
January	106.8	106.0	111.7	117.9	110.4	94.5	170.0	110.2	100.0	99.8	101.6	109.4	
February	105.9	103.5	114.1	117.9	110.4	94.5	170.0	107.7	100.0	99.8	101.6	109.4	
March	108.9	112.1	114.5	117.9	110.4	94.5	170.0	102.0	100.0	99.8	101.6	109.4	
April	107.3	106.7	114.7	135.5	110.4	94.5	170.0	106.3	100.0	99.8	101.6	109.4	
May (P)	108.0	104.4	114.7	135.5	113.5	94.5	170.0	121.0	100.0	99.8	101.6	109.4	
Percentage Change (P)													
May 2014 over Apr 2014	0.7	-2.1	0.0	0.0	2.8	0.0	0.0	13.9	0.0	0.0	0.0	0.0	
May 2014 over May 2013	-2.9	-13.6	4.1	14.9	3.9	-3.0	70.0	16.2	-0.1	0.9	0.0	9.4	
LOCAL ITEMS UNDERLYING INDEX													
Group	All Items	Food and Non Alcoholic Beverages	Alcoholic Beverages and Tobacco	Clothing and Footwear	Housing, Water, Electricity, Gas and other Fuels	Furnishings, Household Equipment and Maintenance	Health	Transport	Communication	Recreation and Culture	Education	Restaurants	Miscellaneous goods and services
Weights	117.4	75.5	n.a.	6.4	1.2	8.6	0.9	9.1	n.a.	1.0	n.a.	14.7	n.a.
Ave - 2011	100.7	102.0		106.4	105.3	98.9	100.0	88.6		100.0		100.0	
Ave - 2012	102.5	103.9		117.3	105.2	95.9	100.0	90.5		100.0		100.0	
Ave - 2013	103.8	105.5		117.9	105.9	97.1	100.0	90.5		100.0		101.6	
2013													
May	103.8	105.7		117.9	104.2	97.5	100.0	90.5		100.0		100.0	
June	103.8	105.6		117.9	104.2	98.6	100.0	90.5		100.0		100.0	
July	103.9	105.9		117.9	103.6	98.6	100.0	90.5		100.0		100.0	
August	104.0	106.0		117.9	103.4	98.6	100.0	90.5		100.0		100.0	
September	103.7	105.6		117.9	107.3	96.2	100.0	90.5		100.0		100.0	
October	103.2	105.0		117.9	108.5	96.2	100.0	90.5		100.0		100.0	
November	104.2	104.9		117.9	110.8	94.2	100.0	90.5		100.0		109.4	
December	104.1	104.6		117.9	110.8	94.2	100.0	90.5		100.0		109.4	
2014													
January	104.3	104.3		117.9	110.6	94.5	100.0	90.5		100.0		109.4	
February	104.3	104.3		117.9	111.6	94.5	100.0	90.5		100.0		109.4	
March	103.9	103.9		117.9	111.6	94.5	100.0	90.5		100.0		109.4	
April	105.3	105.3		135.5	111.6	94.5	100.0	90.5		100.0		109.4	
May (P)	105.2	105.2		135.5	111.6	94.5	100.0	90.5		100.0		109.4	
Percentage Change (P)													
May 2014 over Apr 2014	-0.1	-0.1		0.0	0.0	0.0	0.0	0.0		0.0		0.0	
May 2014 over May 2013	1.3	-0.5		14.9	7.1	-3.1	0.0	0.0		0.0		9.4	

Source : Samoa Bureau Statistics

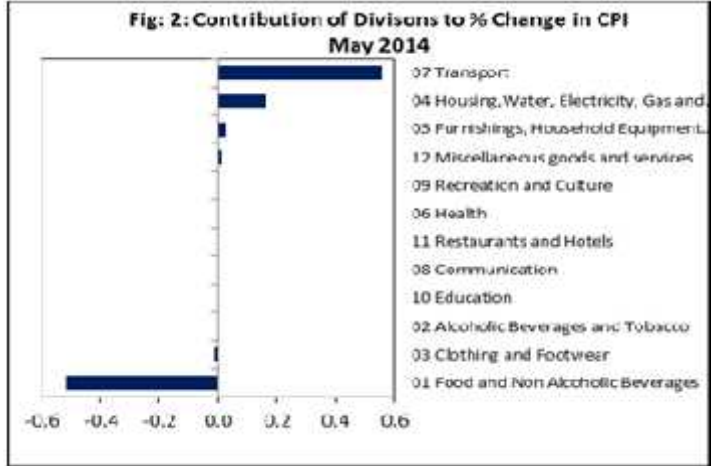
(P): Provisional figures

Note: n.a. Not applicable

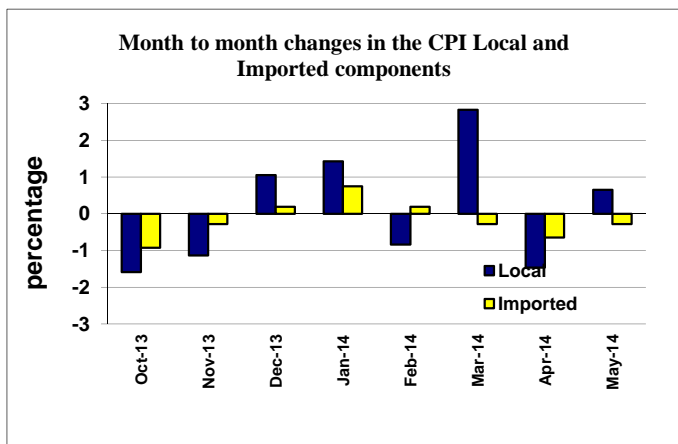
Graph.1



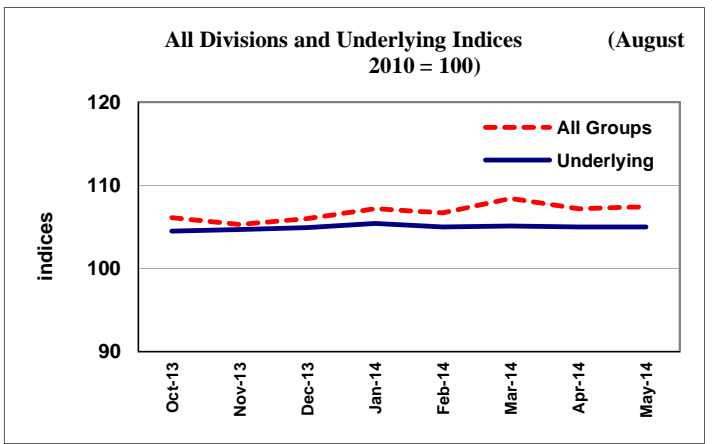
Graph.2



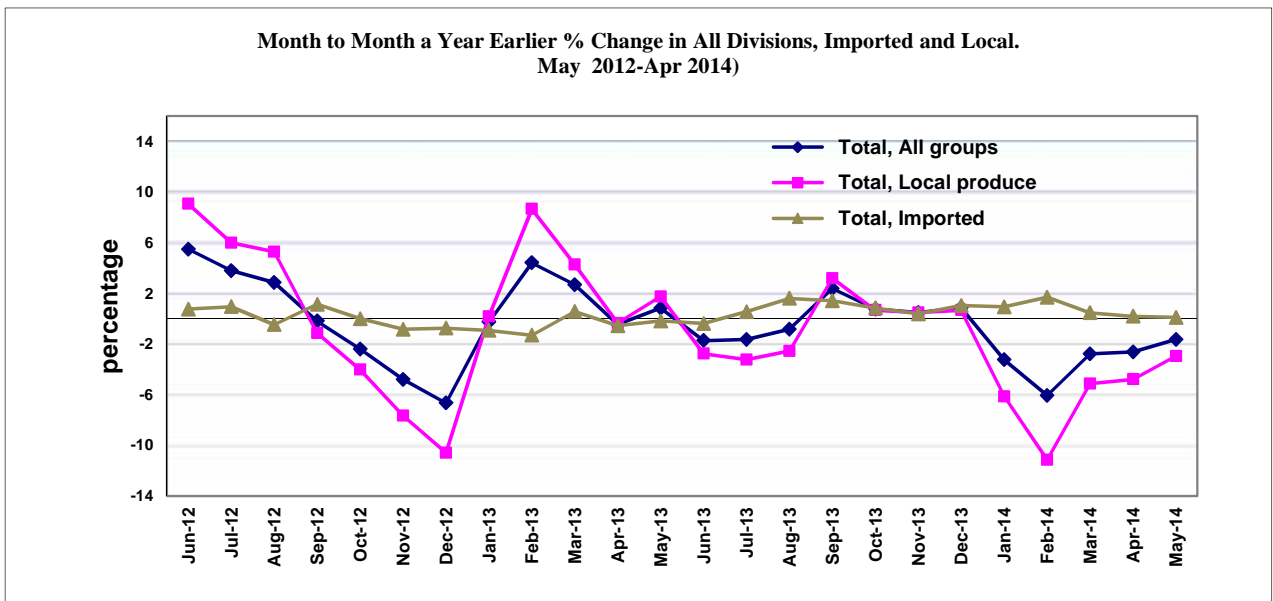
Graph.3



Graph.4



Graph 5



Source: Samoa Bureau of Statistics