

Please address all correspondence  
To Government Statistician

In reply, please quote the file reference



GOVERNMENT OF SAMOA

File Ref: CPI 4/14

## SAMOA BUREAU OF STATISTICS

### CONSUMER PRICE INDEX

#### April 2014

#### Key findings:

The Consumer Price Index for April 2014 decreased by 1.1 percent compared to the previous month.

- The Food and Non Alcoholic Beverages index decreased by 2.5 percent, driven down by lower prices for market staples and fresh fish.
- Clothing and Footwear increased by 6.1 percent.
- Transport index also Increased by 2.2 percent.
- The Average Annual Inflation for the year ended April 2014 down by 1.2 percent.

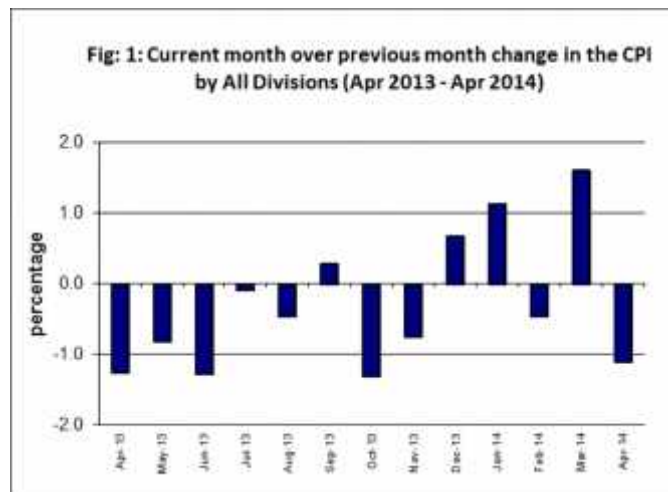
The CPI fell 2.6 percent from April 2013.

#### SUMMARY

The Consumer Price Index for April 2014 was 1.1 percent lower than in March 2014 and was 2.6 percent lower than April 2013.

The decrease of the Local Goods Component by 1.5 percent reflects lower prices for market staples and fresh fish, which was also the main contributor to the decrease of 1.1 percent in the All Items Consumer Price Index.

The Imported Goods Component also recorded a decrease of 0.7 percent over March 2014. Figure 1 shows the month to month percentage changes in the Consumer Price Index by all Divisions from April 2013 to April 2014.

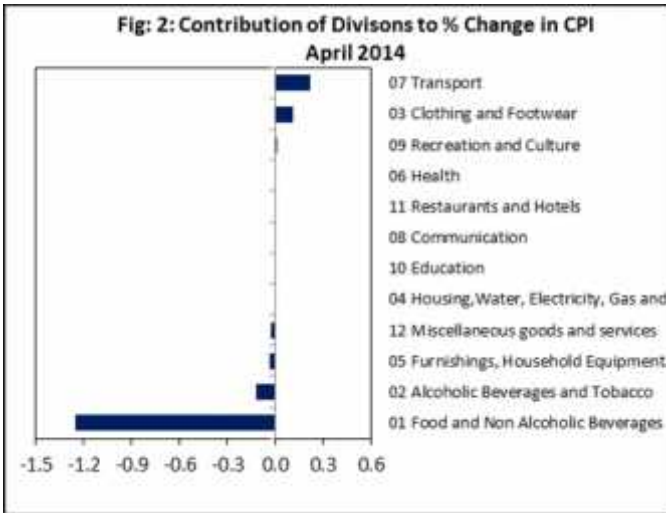


Source : Samoa Bureau of Statistics

### Total All Divisions Contribution

Food and Non Alcoholic Beverages divisions along with Alcoholic Beverages and Tobacco were the main contributors to the overall decrease of 1.1 percent in the All Division Consumer Price Index.

On the other hand there were offsetting contributions from the Transport division with 0.2 percent and Clothing and Footwear division with 0.1 percent increases.



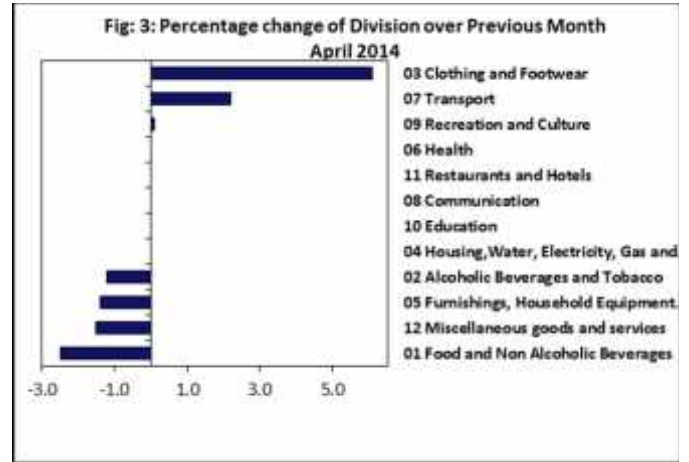
Source : Samoa Bureau of Statistics

### Consumer Price Index (% Change)

The Food and Non Alcoholic Beverages index recorded a decrease of 2.5 percent. Miscellaneous Goods and Services, Furnishing, Household Equipment and Maintenance and Alcoholic Beverages registered decreases of 1.5, 1.4 and 1.2 percent respectively.

On the other hand, increases were recorded for the Clothing and Footwear index with 6.1 percent, Transport with 2.2 percent and Recreation and Culture with 0.1 percent.

No changes were recorded for the Housing, Water, Electricity, Gas and other Fuels, Health, Communication, Education and Restaurants indices. Graphically presented in Fig 3 is the March 2014 percentage change for all divisions from April 2014.



Source : Samoa Bureau of Statistics

### Local Goods Component

The Local Goods Component of the Consumer Price Index registered a decrease of 1.5 percent when compared to the previous month. This decrease was mainly due to lower prices recorded for taro, fresh fish (piece and large), yam, taro leaves, chinese cabbage and breadfruit.

### Imported Goods Component

A decreased price recorded for chicken leg quarter, mutton flap and spirit nip (volka and whisky) resulted in the 0.7 percent decrease in the imported Good Component.

### Food and Non Alcoholic Beverages Index

Lower prices recorded for chicken leg quarter, mutton flap, taro, fresh fish (piece and large), yam, taro leaves, chinese cabbage and breadfruit was reflected in the 2.5 percent decrease in the Food and Non Alcoholic Beverages index.



### Miscellaneous Goods and Services Index

The lower prices recorded for toilet soap was reflected in the 1.5 percent decrease in the Miscellaneous Good and Services index.

### Furnishing, Household Equipment, and Maintenance Index

A decrease of 1.4 percent in the Furnishing, Household Equipment and Maintenance index was mainly due to lower prices recorded for washing powder and sheeting material.

### Alcoholic Beverages and Tobacco Index

Decreased prices recorded for spirit nip (volka and whisky) is reflected in the 1.2 percent decrease in the Alcoholic Beverages and Tobacco index.

### Clothing and Footwear Index

Higher prices recorded for dressing material and school uniform have resulted in the 6.1 percent increase in the Clothing and Footwear index.

### Transport Index

An increase of 2.2 percent in the Transport index is a reflection of the higher prices recorded for airline fare (Apia-Auckland-Apia).

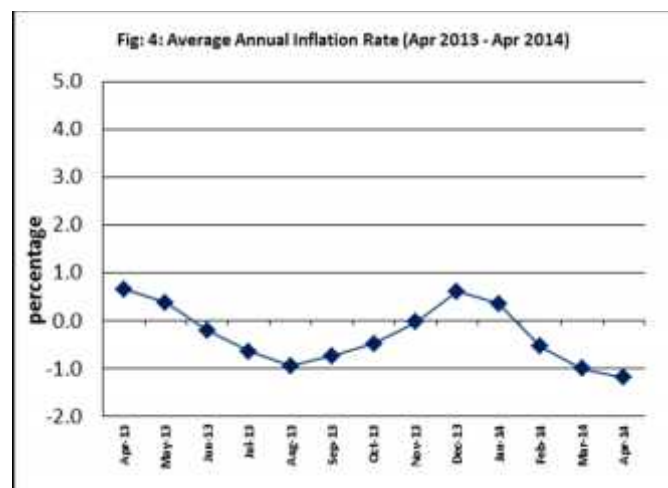
### Underlying Indices

The All Items Underlying Index for April 2014 registered a decrease of 0.1 percent when

compared to March 2014, and an increase of 0.5 percent when compared to April 2013. The Imported Items Underlying Index recorded a decrease of 0.4 percent while the Local Items Underlying Index recorded an increase of 1.3 percent.

### Average Annual Inflation Rate

The average annual inflation rate for the year ended April 2014 was negative 1.2%. For the twelve months ending April 2013 the inflation rate was 0.6 percent. Presented in Fig 4 is the Average annual inflation rates (April 2013 - April 2014).



Source : Samoa Bureau of Statistics

The attached Tables and Graphs provide the user with more detailed analysis.

  
Muagututi'a S'Reupena  
**GOVERNMENT STATISTICIAN**

Date of release: 14<sup>th</sup> May 2014.

The next Consumer Price Index will be released on 11<sup>th</sup> June 2014.

**Table 1. CONSUMER PRICE INDEX.**  
(Base Period : Average Prices August 2010 = 100)

Group	All Items	Food and Non Alcoholic Beverages	Alcoholic Beverages and Tobacco	Clothing and Footwear	Housing, Water, Electricity, Gas and other Fuels	Furnishings, Household Equipment, and Maintenance	Health	Transport	Communication	Recreation and Culture	Education	Restaurants	Miscellaneous goods and services
<i>Weights</i>	<b>1000</b>	<b>502</b>	<b>97</b>	<b>17</b>	<b>78</b>	<b>31</b>	<b>16</b>	<b>97</b>	<b>58</b>	<b>34</b>	<b>31</b>	<b>15</b>	<b>24</b>
Ave - 2011	105.7	108.2	105.0	103.9	106.5	100.5	98.7	106.6	100.0	98.1	100.0	100.0	100.3
Ave - 2012	107.9	110.3	107.8	113.1	108.9	100.4	96.0	111.2	100.0	98.0	101.6	100.0	100.9
Ave - 2013	108.6	111.1	110.8	113.5	107.2	101.4	96.1	111.8	100.0	98.5	101.6	101.6	100.7
2013													
April	110.1	114.3	110.5	113.1	107.3	101.4	96.9	111.7	100.0	98.0	101.6	100.0	100.4
May	109.2	112.7	110.5	113.1	107.5	101.4	96.9	110.6	100.0	98.0	101.6	100.0	101.5
June	107.8	109.7	111.7	112.9	105.3	101.9	96.7	111.7	100.0	98.9	101.6	100.0	101.1
July	107.7	108.7	111.7	112.6	107.0	101.9	96.8	114.4	100.0	98.9	101.6	100.0	101.1
August	107.2	107.9	111.7	112.7	107.1	101.6	96.1	113.8	100.0	98.9	101.6	100.0	100.7
September	107.5	107.7	111.7	112.7	108.5	101.1	96.1	116.5	100.0	98.9	101.6	100.0	100.7
October	106.1	105.9	111.7	114.4	108.7	100.9	96.1	110.7	100.0	98.9	101.6	100.0	101.6
November	105.3	104.6	111.7	114.5	108.6	101.0	96.1	108.3	100.0	98.9	101.6	109.4	100.4
December	106.0	105.8	112.3	113.8	108.4	100.5	93.2	109.4	100.0	98.9	101.6	109.4	99.4
2014													
January	107.2	106.9	112.3	112.4	108.4	100.2	106.9	114.6	100.0	98.9	101.6	109.4	100.0
February	106.7	105.3	114.3	113.7	108.5	100.6	106.9	115.7	100.0	98.9	101.6	109.4	100.0
March	108.4	109.4	114.6	113.2	108.4	100.5	106.9	111.3	100.0	98.9	101.6	109.4	100.0
April (P)	107.2	106.7	113.2	120.1	108.4	99.1	106.9	113.7	100.0	99.1	101.6	109.4	98.5
<b>Percentage Change (P)</b>													
Apr 2014 over Mar 2014	-1.1	-2.5	-1.2	6.1	0.0	-1.4	0.0	2.2	0.0	0.1	0.0	0.0	-1.5
Apr 2014 over Apr 2013	-2.6	-6.6	2.4	6.2	1.0	-2.3	10.3	1.8	0.0	1.0	0.0	9.4	-1.9
<b>ALL ITEMS UNDERLYING INDEX</b>													
Group	All Items	Food and Non Alcoholic Beverages	Alcoholic Beverages and Tobacco	Clothing and Footwear	Housing, Water, Electricity, Gas and other Fuels	Furnishings, Household Equipment, and Maintenance	Health	Transport	Communication	Recreation and Culture	Education	Restaurants	Miscellaneous goods and services
<i>Weights</i>	<b>480</b>	<b>348</b>	<i>n.a.</i>	<b>17</b>	<b>17</b>	<b>31</b>	<b>14</b>	<b>13</b>	<i>n.a.</i>	<b>2</b>	<i>n.a.</i>	<b>15</b>	<b>24</b>
Ave - 2011	103.4	104.8		103.9	99.8	100.5	98.5	94.9		89.3		100.0	100.3
Ave - 2012	104.3	105.3		113.1	101.7	100.4	95.4	100.1		86.8		100.0	100.9
Ave - 2013	104.7	106.0		113.5	99.4	101.4	95.5	97.4		87.0		101.6	100.7
2013													
April	104.5	105.8		113.1	98.1	101.4	96.4	97.6		87.0		100.0	100.4
May	104.6	105.8		113.1	99.5	101.4	96.4	96.4		87.0		100.0	101.5
June	104.6	106.0		112.9	96.7	101.9	96.2	96.4		87.0		100.0	101.1
July	105.2	106.7		112.6	100.1	101.9	96.3	96.4		87.0		100.0	101.1
August	104.9	106.3		112.7	100.4	101.6	95.5	96.4		87.0		100.0	100.7
September	105.2	106.8		112.7	99.5	101.1	95.5	96.4		87.0		100.0	100.7
October	104.5	105.7		114.4	100.1	100.9	95.5	96.4		87.0		100.0	101.6
November	104.7	105.6		114.5	100.1	101.0	95.5	96.4		87.0		109.4	100.4
December	104.9	106.2		113.8	99.4	100.5	92.1	96.4		87.0		109.4	99.4
2014													
January	105.4	107.0		112.4	98.8	100.2	92.7	95.6		87.0		109.4	100.0
February	105.0	106.4		113.7	98.9	100.6	92.7	95.6		87.0		109.4	100.0
March	105.1	106.5		113.2	98.9	100.5	92.7	95.6		87.0		109.4	100.0
April (P)	105.0	106.3		120.1	98.9	99.1	92.7	95.6		88.1		109.4	98.5
<b>Percentage Change (P)</b>													
Apr 2014 over Mar 2014	-0.1	-0.2		6.1	0.0	-1.4	0.0	0.0		1.3		0.0	-1.5
Apr 2014 over Apr 2013	0.5	0.5		6.2	0.9	-2.3	-3.9	-2.1		1.2		9.4	-1.9

Source : Samoa Bureau Statistics  
(P): Provisional figures  
Note: n.a. Not applicable



Commodities	Weight	Unit	2013			2014		
			Feb	Mar	Apr	Feb	Mar	Apr (P)
<b>Health</b>								
Paracetamol	3.7	20tablet	1.88	1.75	1.88	1.75	1.75	1.75
Magnesium Trisillicate	3.6	120mls	8.13	8.13	7.83	7.30	7.30	7.30
Cough Mixture	3.6	100mls	9.50	9.50	9.95	9.40	9.40	9.40
Hospital Charge	2.1	per night	5.00	5.00	5.00	10.00	10.00	10.00
<b>Transport</b>								
Petrol	39.1	ltr	2.97	3.09	3.05	3.18	3.10	3.11
Labour charge car repair	9.1	min crg	51.67	51.67	51.67	51.67	51.67	51.67
Air Fares Apia-Auckland-Apia	7.8	return	1505.45	1477.00	1599.60	1917.45	1453.25	1723.45
Air Fares Fagalii-Pago	7.8	return	370.00	370.00	370.00	380.00	380.00	380.00
Bus Fares Apia-Motootua Hosp	3.7	per trip	0.80	0.80	0.80	0.80	0.80	0.80
Bus Fares Apia-Malua	3.7	per trip	2.00	2.00	2.00	2.00	2.00	2.00
Bus Fares Apia-Falefa	3.7	per trip	3.20	3.20	3.20	3.20	3.20	3.20
Car Tyre 205/70R(14)	3.7	size 14	252.50	227.50	227.50	215.00	215.00	215.00
Taxi Fares PO-Motootua Hosp	3.3	per trip	3.50	3.50	3.50	3.50	3.50	3.50
Taxi Fares Po-Malua	3.3	per trip	26.10	26.10	26.10	26.10	26.10	26.10
Taxi Fares PO-Falefa	3.3	per trip	36.00	36.00	36.00	36.00	36.00	36.00
Diesel	2.8	ltr	3.07	3.13	3.06	3.31	3.17	3.17
Car Registration 1500-2000 cc	2.0	ann rate	290.00	290.00	290.00	290.00	290.00	290.00
Boat Fares Mulifanua-Salelologa	1.3	one way	12.00	12.00	12.00	12.00	12.00	12.00
<b>Communication</b>								
Telephone local call	23.6	1 min	0.06	0.06	0.06	0.06	0.06	0.06
Telephone NZ call	10.6	3 mins	2.55	2.55	2.55	2.55	2.55	2.55
Telephone USA call	10.6	3 mins	5.37	5.37	5.37	5.37	5.37	5.35
Telephone Rental	10.6	monthly	24.15	24.15	24.15	24.15	24.15	24.15
Internet Prepaid Rates (a)	2.6	30 mins	5.10	5.10	5.10	5.10	5.10	5.10
PO Box rental (small box)	0.2	ann rate	80.00	80.00	80.00	80.00	80.00	80.00
<b>Recreation and Culture</b>								
National Lotto (a)	23.6	ticket	7.00	7.00	7.00	7.00	7.00	7.00
Tattslotto	3.8	ticket	13.50	13.50	13.50	13.50	13.50	13.50
News Paper Samoa Observer	2.7	each	2.50	2.50	2.50	2.50	2.50	2.50
<b>Education</b>								
School Fees Primary	10.5	Yr 4	10.00	10.00	10.00	10.00	10.00	10.00
School Fees Secondary	8.1	Yr 10	50.00	50.00	50.00	50.00	50.00	50.00
School Fees Primary	7.6	Yr 8	20.00	20.00	20.00	20.00	20.00	20.00
School Fees (NUS registration)	5.1	tertiary	265.00	265.00	265.00	265.00	265.00	265.00
<b>Restaurants</b>								
Meal (Fish & Chips)	11.0	1 serve	8.00	8.00	8.00	9.00	9.00	9.00
Meal (Pinati)	3.7	1 serve	3.00	3.00	3.00	3.00	3.00	3.00
<b>Miscellaneous goods and services</b>								
Toilet soap	7.6	90g	1.09	1.11	1.10	1.13	1.13	1.07
Diapers (16kg & over )	7.2	24pkt	37.97	37.98	37.92	37.40	37.40	37.73
Toilet Paper	3.6	roll	0.95	0.95	0.95	0.90	0.90	0.90

Source : Samoa Bureau Statistics

(a) : New commodity from August 2010

(b) : Average price across all brands

(c) : Revised figures

(P) : Provisional figures

**Table 3. IMPORTED GOODS COMPONENT OF THE CONSUMER PRICE INDEX**  
(Base Period : Average Prices August 2010 = 100)

Group	All Items	Food and Non Alcoholic Beverages	Alcoholic Beverages and Tobacco	Clothing and Footwear	Housing, Water, Electricity, Gas and other Fuels	Furnishings, Household Equipment and Maintenance	Health	Transport	Communication	Recreation and Culture	Education	Restaurants	Miscellaneous goods and services
<b>Weights</b>	<b>424.8</b>	<b>272.0</b>	<b>17.1</b>	<b>10.9</b>	<b>17.5</b>	<b>22.7</b>	<b>12.8</b>	<b>46.8</b>	<b>n.a.</b>	<b>1.3</b>	<b>n.a.</b>	<b>n.a.</b>	<b>23.7</b>
Ave - 2011	105.5	105.6	112.9	102.5	101.2	101.1	98.4	111.6		81.1			100.3
Ave - 2012	106.7	105.7	113.9	110.6	103.8	102.1	95.1	118.6		76.7			100.9
Ave - 2013	106.9	106.2	112.1	110.9	101.7	103.0	95.2	119.7		77.0			100.7
2013													
April	106.7	105.8	111.9	110.3	100.4	102.9	96.1	119.9		77.0			100.4
May	106.5	105.8	111.9	110.2	101.6	102.9	96.1	117.5		77.0			101.5
June	106.4	106.1	111.9	110.0	98.8	103.1	96.0	115.8		77.0			101.1
July	107.6	106.9	111.9	109.5	102.5	103.2	96.0	120.7		77.0			101.1
August	107.5	106.4	111.9	109.6	103.2	102.7	95.2	123.6		77.0			100.7
September	108.0	107.1	111.9	109.6	102.0	102.9	95.2	123.9		77.0			100.7
October	107.0	106.0	111.9	112.3	102.7	102.7	95.2	120.9		77.0			101.6
November	106.7	105.8	111.5	112.5	102.4	103.5	95.2	119.4		77.0			100.4
December	106.9	106.7	115.2	111.4	101.4	103.0	91.6	116.7		77.0			99.4
2014													
January	107.7	107.6	115.2	109.2	101.2	102.4	92.1	119.3		77.0			100.0
February	107.9	106.8	115.2	111.1	102.0	102.9	92.1	124.2		77.0			100.0
March	107.6	107.1	115.2	110.4	101.2	102.7	92.1	121.3		77.0			100.0
April (P)	106.9	106.7	106.0	111.1	101.2	100.8	92.1	121.6		78.9			98.5
<b>Percentage Change (P)</b>													
Apr 2014 over Mar 2014	-0.7	-0.3	-8.0	0.7	0.0	-1.9	0.0	0.3		2.5			-1.5
Apr 2014 over Apr 2013	0.2	0.9	-5.2	0.7	0.8	-2.0	-4.2	1.4		2.5			-1.9
<b>IMPORTED ITEMS UNDERLYING INDEX</b>													
Group	All Items	Food and Non Alcoholic Beverages	Alcoholic Beverages and Tobacco	Clothing and Footwear	Housing, Water, Electricity, Gas and other Fuels	Furnishings, Household Equipment and Maintenance	Health	Transport	Communication	Recreation and Culture	Education	Restaurants	Miscellaneous goods and services
<b>Weights</b>	<b>362.8</b>	<b>272.0</b>	<b>n.a.</b>	<b>10.9</b>	<b>15.4</b>	<b>22.7</b>	<b>12.8</b>	<b>4.0</b>	<b>n.a.</b>	<b>1.3</b>	<b>n.a.</b>	<b>n.a.</b>	<b>23.7</b>
Ave - 2011	104.3	105.6		102.5	99.4	101.1	98.4	109.2		81.1			100.3
Ave - 2012	104.9	105.7		110.6	101.4	102.1	95.1	122.0		76.7			100.9
Ave - 2013	105.0	106.2		110.9	98.9	103.0	95.2	113.2		77.0			100.7
2013													
April	104.7	105.8		110.3	97.6	102.9	96.1	113.7		77.0			100.4
May	104.8	105.8		110.2	99.2	102.9	96.1	109.8		77.0			101.5
June	104.9	106.1		110.0	96.2	103.1	96.0	109.9		77.0			101.1
July	105.6	106.9		109.5	99.8	103.2	96.0	109.9		77.0			101.1
August	105.2	106.4		109.6	100.2	102.7	95.2	109.9		77.0			100.7
September	105.7	107.1		109.6	98.9	102.9	95.2	109.7		77.0			100.7
October	104.9	106.0		112.3	99.4	102.7	95.2	109.7		77.0			101.6
November	104.8	105.8		112.5	99.2	103.5	95.2	109.7		77.0			100.4
December	105.2	106.7		111.4	98.5	103.0	91.6	109.7		77.0			99.4
2014													
January	105.8	107.6		109.2	97.9	102.4	92.1	107.2		77.0			100.0
February	105.3	106.8		111.1	97.9	102.9	92.1	107.2		77.0			100.0
March	105.4	107.1		110.4	97.9	102.7	92.1	107.2		77.0			100.0
April (P)	105.0	106.7		111.1	97.9	100.8	92.1	107.1		78.9			98.5
<b>Percentage Change (P)</b>													
Apr 2014 over Mar 2014	-0.4	-0.3		0.7	0.0	-1.9	0.0	-0.1		2.5			-1.5
Apr 2014 over Apr 2013	0.3	0.9		0.7	0.4	-2.0	-4.2	-5.8		2.5			-1.9

Source : Samoa Bureau Statistics  
(P); Provisional figures  
Note: n.a. Not applicable

**Table 4. LOCAL GOODS COMPONENT OF THE CONSUMER PRICE INDEX**  
(Base Period : Average Prices August 2010 = 100)

Group	All Items	Food and Non Alcoholic Beverages	Alcoholic Beverages and Tobacco	Clothing and Footwear	Housing, Water, Electricity, Gas and other Fuels	Furnishings, Household Equipment and Maintenance	Health	Transport	Communication	Recreation and Culture	Education	Restaurants	Miscellaneous goods and services
<b>Weights</b>	<b>575.2</b>	<b>229.8</b>	<b>79.6</b>	<b>6.4</b>	<b>60.6</b>	<b>8.6</b>	<b>3.0</b>	<b>50.3</b>	<b>58.2</b>	<b>32.7</b>	<b>31.3</b>	<b>14.7</b>	<b>n.a.</b>
Ave - 2011	105.9	111.2	103.3	106.4	108.0	98.9	100.0	101.8	100.0	98.7	100.0	100.0	
Ave - 2012	108.8	115.8	106.5	117.3	110.3	95.9	100.0	104.2	100.0	98.8	101.6	100.0	
Ave - 2013	109.8	116.9	110.5	117.9	108.8	97.1	100.0	104.4	100.0	99.4	101.6	101.6	
2013													
April	112.7	124.5	110.2	117.9	109.3	97.5	100.0	104.1	100.0	98.8	101.6	100.0	
May	111.3	120.9	110.2	117.9	109.3	97.5	100.0	104.2	100.0	98.8	101.6	100.0	
June	108.8	113.8	111.6	117.9	107.2	98.6	100.0	107.9	100.0	99.8	101.6	100.0	
July	107.8	110.9	111.6	117.9	108.2	98.6	100.0	108.6	100.0	99.8	101.6	100.0	
August	107.0	109.7	111.6	117.9	108.2	98.6	100.0	104.7	100.0	99.8	101.6	100.0	
September	107.1	108.4	111.6	117.9	110.4	96.2	100.0	109.6	100.0	99.8	101.6	100.0	
October	105.4	105.9	111.7	117.9	110.4	96.2	100.0	101.2	100.0	99.8	101.6	100.0	
November	104.2	103.1	111.7	117.9	110.4	94.2	100.0	98.0	100.0	99.8	101.6	109.4	
December	105.3	104.8	111.7	117.9	110.4	94.2	100.0	102.7	100.0	99.8	101.6	109.4	
2014													
January	106.8	106.0	111.7	117.9	110.4	94.5	170.0	110.2	100.0	99.8	101.6	109.4	
February	105.9	103.5	114.1	117.9	110.4	94.5	170.0	107.7	100.0	99.8	101.6	109.4	
March	108.9	112.1	114.5	117.9	110.4	94.5	170.0	102.0	100.0	99.8	101.6	109.4	
April (P)	107.3	106.7	114.7	135.5	110.4	94.5	170.0	106.3	100.0	99.8	101.6	109.4	
<b>Percentage Change (P)</b>													
Apr 2014 over Mar 2014	-1.5	-4.9	0.2	14.9	0.0	0.0	0.0	4.1	-0.1	0.0	0.0	0.0	0.0
Apr 2014 over Apr 2013	-4.8	-14.3	4.1	14.9	1.1	-3.0	70.0	2.1	-0.1	0.9	0.0	9.4	
<b>LOCAL ITEMS UNDERLYING INDEX</b>													
Group	All Items	Food and Non Alcoholic Beverages	Alcoholic Beverages and Tobacco	Clothing and Footwear	Housing, Water, Electricity, Gas and other Fuels	Furnishings, Household Equipment and Maintenance	Health	Transport	Communication	Recreation and Culture	Education	Restaurants	Miscellaneous goods and services
<b>Weights</b>	<b>117.4</b>	<b>75.5</b>	<b>n.a.</b>	<b>6.4</b>	<b>1.2</b>	<b>8.6</b>	<b>0.9</b>	<b>9.1</b>	<b>n.a.</b>	<b>1.0</b>	<b>n.a.</b>	<b>14.7</b>	<b>n.a.</b>
Ave - 2011	100.7	102.0		106.4	105.3	98.9	100.0	88.6		100.0		100.0	
Ave - 2012	102.5	103.9		117.3	105.2	95.9	100.0	90.5		100.0		100.0	
Ave - 2013	103.8	105.5		117.9	105.9	97.1	100.0	90.5		100.0		101.6	
2013													
April	103.8	105.8		117.9	104.2	97.5	100.0	90.5		100.0		100.0	
May	103.8	105.7		117.9	104.2	97.5	100.0	90.5		100.0		100.0	
June	103.8	105.6		117.9	104.2	98.6	100.0	90.5		100.0		100.0	
July	103.9	105.9		117.9	103.6	98.6	100.0	90.5		100.0		100.0	
August	104.0	106.0		117.9	103.4	98.6	100.0	90.5		100.0		100.0	
September	103.7	105.6		117.9	107.3	96.2	100.0	90.5		100.0		100.0	
October	103.2	105.0		117.9	108.5	96.2	100.0	90.5		100.0		100.0	
November	104.2	104.9		117.9	110.8	94.2	100.0	90.5		100.0		109.4	
December	104.1	104.6		117.9	110.8	94.2	100.0	90.5		100.0		109.4	
2014													
January	104.3	104.3		117.9	110.6	94.5	100.0	90.5		100.0		109.4	
February	104.3	104.3		117.9	111.6	94.5	100.0	90.5		100.0		109.4	
March	103.9	103.9		117.9	111.6	94.5	100.0	90.5		100.0		109.4	
April (P)	105.3	105.3		135.5	111.6	94.5	100.0	90.5		100.0		109.4	
<b>Percentage Change (P)</b>													
Apr 2014 over Mar 2014	1.3	1.3		14.9	0.0	0.0	0.0	0.0		0.0		0.0	
Apr 2014 over Apr 2013	1.4	-0.5		14.9	7.1	-3.1	0.0	0.0		0.0		9.4	

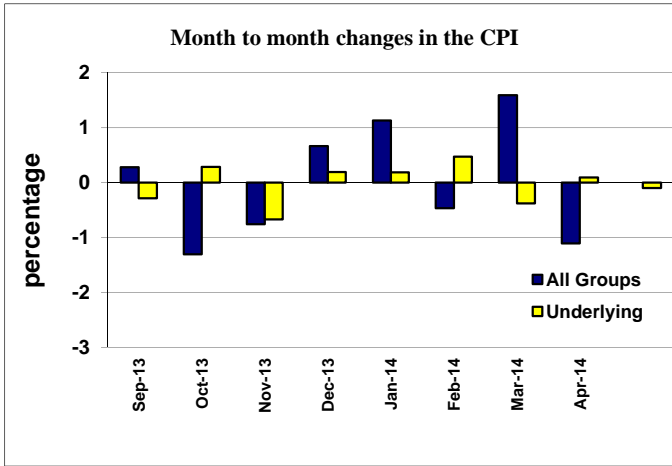
Source : Samoa Bureau Statistics

(P): Provisional figures

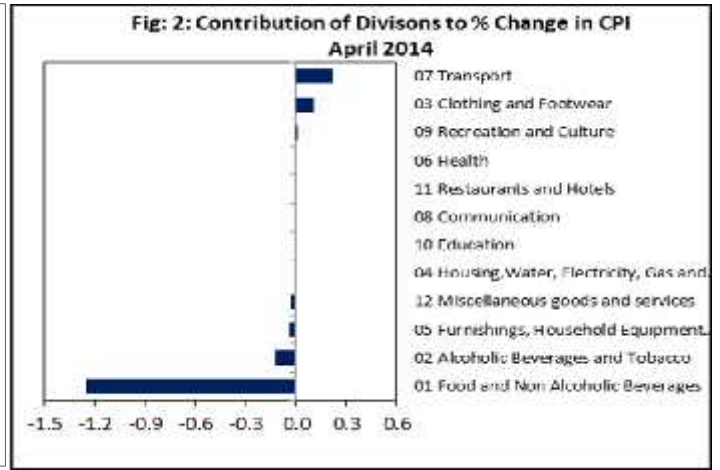
Note: n.a. Not applicable



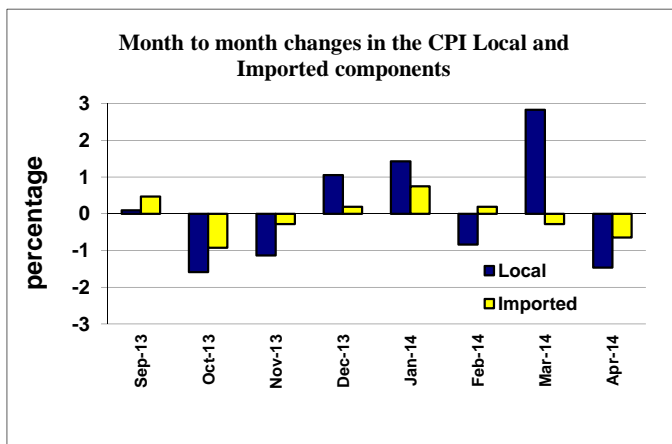
Graph.1



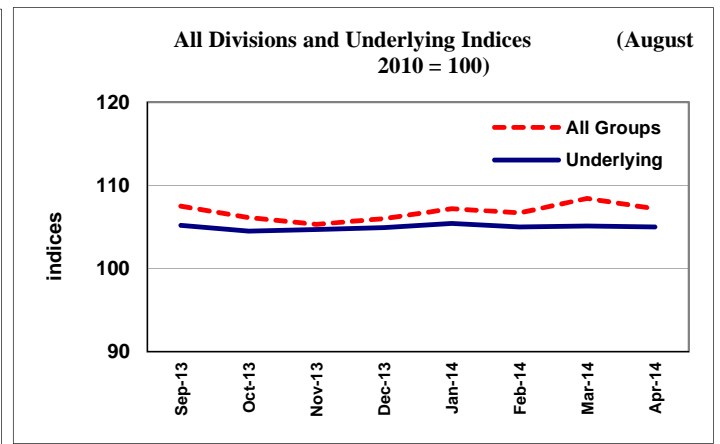
Graph.2



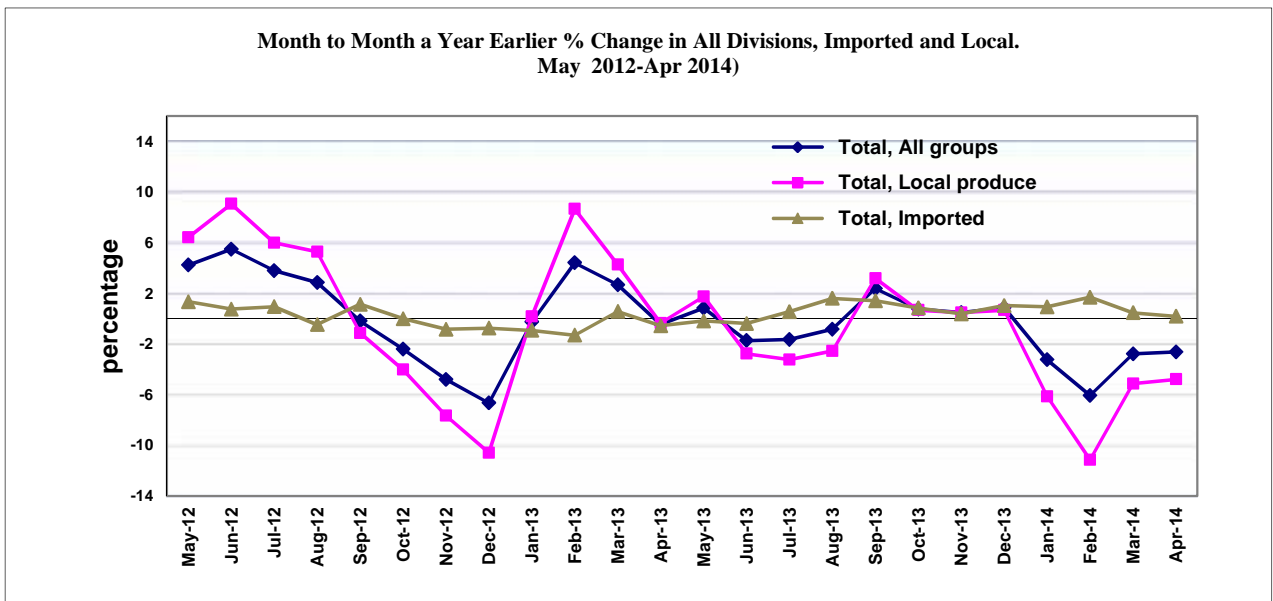
Graph.3



Graph.4



Graph 5



Source: Samoa Bureau of Statistics