

Please address all correspondence
To Government Statistician

In reply, please quote the file reference



GOVERNMENT OF SAMOA

File Ref: CPI 03/14

SAMOA BUREAU OF STATISTICS

CONSUMER PRICE INDEX March 2014

Key findings:

The Consumer Price Index for March 2014 increased by 1.6 percent compared to the previous month.

- The Food and Non Alcoholic Beverages index increased by 3.9 percent.
- Transport index decreased by 3.8 percent.
- The Average Annual Inflation for the year ended March 2014 down by 1.0 percent.

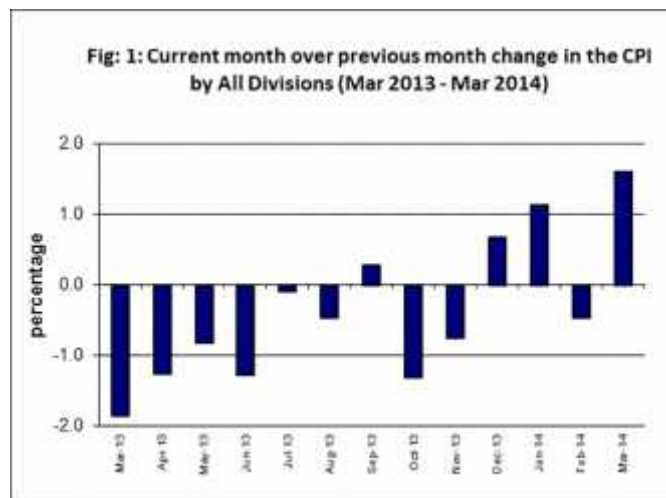
The CPI fell 2.8 percent from March 2013.

SUMMARY

The Consumer Price Index for March 2014 was 1.6 percent higher than February 2014, and was 2.8 percent lower than March 2013.

The increase of the Local Goods component by 2.8 percent from the previous month was due to higher prices for market staples and fresh fish, which was also the main contributor to the increase of 1.6 percent in the All Items Consumer Price Index.

The Imported Goods Component recorded a decrease of 0.2 percent over February 2014. Figure 1 shows the month to month percentage changes in the Consumer Price Index by all Divisions from March 2013 to March 2014.

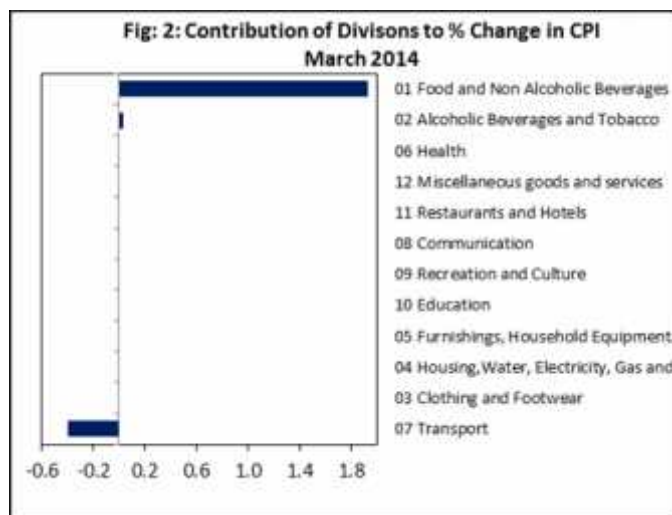


Source : Samoa Bureau of Statistics

Total All Divisions Contribution

Food and Non Alcoholic Beverages division, with a positive contribution of 1.9 percent, was the main contributor to the overall increase of 1.6 percent in the All Division Consumer Price Index.

On the other hand, there was an offsetting contribution from the Transport division with 0.4 percent decrease. Presented in Fig 2 is the March 2014 contribution of divisions to the percentage change in CPI from February 2014.



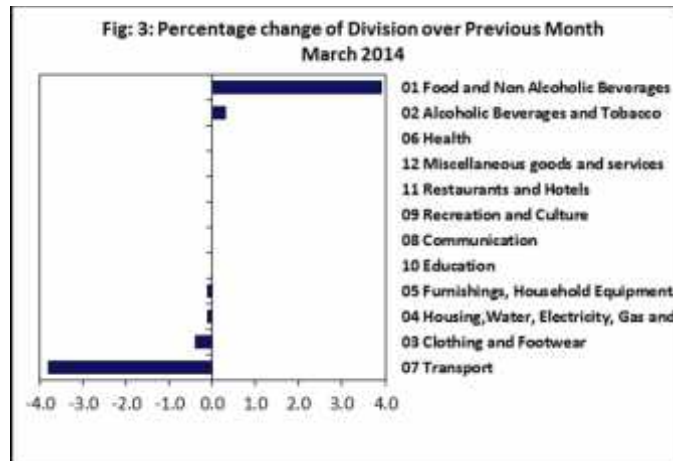
Source : Samoa Bureau of Statistics

Consumer Price Index (% Change)

The Food and Non Alcoholic Beverages index recorded an increase of 3.9 percent, while Alcoholic Beverages and Tobacco index also showed an increase of 0.3 percent.

On the other hand, decreases were recorded for Transport with 3.8 percent and Clothing and Footwear with 0.4 percent. Housing, Water, Electricity, Gas and other Fuels and Furnishing, Household Equipment and Maintenance indices both registered slight decreases of 0.1 percent.

No changes were recorded for the Health, Communication, Recreation and culture, Education, Restaurants and Miscellaneous Goods and Services indices. Graphically presented in Fig 3 is the March 2014 percentage change for all divisions from February 2014.



Source : Samoa Bureau of Statistics

Local Goods Component

The Local Goods Component of the Consumer Price Index registered an increase of 2.8 percent when compared to the previous month. This increase was mainly due to higher prices recorded for taro, taamu, fresh fish (piece, large and string), yam, breadfruit.

Imported Goods Component

Decreased prices recorded for fuel (petrol and diesel) have resulted in the 0.2 percent decrease in the imported Good Component.

Food and Non Alcoholic Beverages Index

The 3.9 percent increase in the Food and Non Alcoholic Beverages index was mainly due to higher prices recorded for taro, taamu, fresh fish (piece, large and string), yam and breadfruit.



Transport Index

Lower prices recorded for fuel (petrol and diesel) and airline fare (Apia-Auckland-Apia) is reflected in the 3.8 percent decrease in the Transport Index.

Clothing and Footwear Index

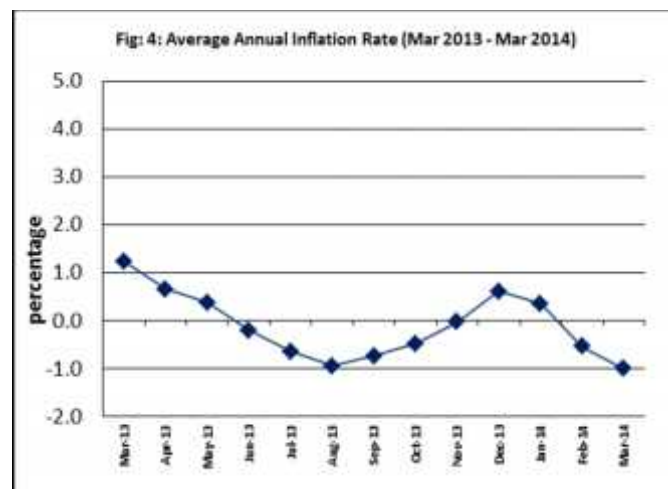
Decreased prices recorded for dressing material and children t-shirt have resulted in the 0.4 percent decrease in the Clothing and Footwear index.

Underlying Indices

The All Items Underlying Index for March 2014 registered an increase of 0.1 percent when compared to February 2014, and an increase of 0.4 percent when compared to March last year. The Imported Items Underlying Index registered an increase of 0.1 percent, while local Items Underlying Index registered a decrease of 0.4 percent.

Inflation Rate

The average annual inflation rate for the year ended March 2014 was negative 1.0%. For the twelve months ending March 2013 the inflation rate was 1.2 percent. Presented in Fig 4 is the Average annual inflation rates (March 2013 - March 2014).



Source : Samoa Bureau of Statistics

The attached Tables and Graphs provide the user with more detailed analysis.


Sofia Silipa
ACTING GOVERNMENT STATISTICIAN

Date of release: 9th April 2014.

The next Consumer Price Index will be released on 9th May 2014.

PO Box 1151
Fax: (685) 24675
APIA, SAMOA
Telephone: (685) 62000

E-Mail: Info.stats@sbs.gov.ws

Website: www.sbs.gov.ws

Table 1. CONSUMER PRICE INDEX.
(Base Period : Average Prices August 2010 = 100)

Group	All Items	Food and Non Alcoholic Beverages	Alcoholic Beverages and Tobacco	Clothing and Footwear	Housing, Water, Electricity, Gas and other Fuels	Furnishings, Household Equipment, and Maintenance	Health	Transport	Communication	Recreation and Culture	Education	Restaurants	Miscellaneous goods and services
<i>Weights</i>	1000	502	97	17	78	31	16	97	58	34	31	15	24
Ave - 2011	105.7	108.2	105.0	103.9	106.5	100.5	98.7	106.6	100.0	98.1	100.0	100.0	100.3
Ave - 2012	107.9	110.3	107.8	113.1	108.9	100.4	96.0	111.2	100.0	98.0	101.6	100.0	100.9
Ave - 2013	108.6	111.1	110.8	113.5	107.2	101.4	96.1	111.8	100.0	98.5	101.6	101.6	100.7
2013													
March	111.5	117.7	108.8	114.0	105.9	101.5	95.4	111.6	100.0	98.0	101.6	100.0	100.8
April	110.1	114.3	110.5	113.1	107.3	101.4	96.9	111.7	100.0	98.0	101.6	100.0	100.4
May	109.2	112.7	110.5	113.1	107.5	101.4	96.9	110.6	100.0	98.0	101.6	100.0	101.5
June	107.8	109.7	111.7	112.9	105.3	101.9	96.7	111.7	100.0	98.9	101.6	100.0	101.1
July	107.7	108.7	111.7	112.6	107.0	101.9	96.8	114.4	100.0	98.9	101.6	100.0	101.1
August	107.2	107.9	111.7	112.7	107.1	101.6	96.1	113.8	100.0	98.9	101.6	100.0	100.7
September	107.5	107.7	111.7	112.7	108.5	101.1	96.1	116.5	100.0	98.9	101.6	100.0	100.7
October	106.1	105.9	111.7	114.4	108.7	100.9	96.1	110.7	100.0	98.9	101.6	100.0	101.6
November	105.3	104.6	111.7	114.5	108.6	101.0	96.1	108.3	100.0	98.9	101.6	109.4	100.4
December	106.0	105.8	112.3	113.8	108.4	100.5	93.2	109.4	100.0	98.9	101.6	109.4	99.4
2014													
January	107.2	106.9	112.3	112.4	108.4	100.2	106.9	114.6	100.0	98.9	101.6	109.4	100.0
February	106.7	105.3	114.3	113.7	108.5	100.6	106.9	115.7	100.0	98.9	101.6	109.4	100.0
March (P)	108.4	109.4	114.6	113.2	108.4	100.5	106.9	111.3	100.0	98.9	101.6	109.4	100.0

Percentage Change (P)

Mar 2014 over Feb 2014	1.6	3.9	0.3	-0.4	-0.1	-0.1	0.0	-3.8	0.0	0.0	0.0	0.0	0.0
Mar 2014 over Mar 2013	-2.8	-7.1	5.3	-0.7	2.4	-1.0	12.1	-0.3	0.0	0.9	0.0	9.4	-0.8

ALL ITEMS UNDERLYING INDEX

Group	All Items	Food and Non Alcoholic Beverages	Alcoholic Beverages and Tobacco	Clothing and Footwear	Housing, Water, Electricity, Gas and other Fuels	Furnishings, Household Equipment, and Maintenance	Health	Transport	Communication	Recreation and Culture	Education	Restaurants	Miscellaneous goods and services
<i>Weights</i>	480	348	<i>n.a.</i>	17	17	31	14	13	<i>n.a.</i>	2	<i>n.a.</i>	15	24
Ave - 2011	103.4	104.8		103.9	99.8	100.5	98.5	94.9		89.3		100.0	100.3
Ave - 2012	104.3	105.3		113.1	101.7	100.4	95.4	100.1		86.8		100.0	100.9
Ave - 2013	104.7	106.0		113.5	99.4	101.4	95.5	97.4		87.0		101.6	100.7
2013													
March	104.7	106.1		114.0	98.5	101.5	94.7	97.6		87.0		100.0	100.8
April	104.5	105.8		113.1	98.1	101.4	96.4	97.6		87.0		100.0	100.4
May	104.6	105.8		113.1	99.5	101.4	96.4	96.4		87.0		100.0	101.5
June	104.6	106.0		112.9	96.7	101.9	96.2	96.4		87.0		100.0	101.1
July	105.2	106.7		112.6	100.1	101.9	96.3	96.4		87.0		100.0	101.1
August	104.9	106.3		112.7	100.4	101.6	95.5	96.4		87.0		100.0	100.7
September	105.2	106.8		112.7	99.5	101.1	95.5	96.4		87.0		100.0	100.7
October	104.5	105.7		114.4	100.1	100.9	95.5	96.4		87.0		100.0	101.6
November	104.7	105.6		114.5	100.1	101.0	95.5	96.4		87.0		109.4	100.4
December	104.9	106.2		113.8	99.4	100.5	92.1	96.4		87.0		109.4	99.4
2014													
January	105.4	107.0		112.4	98.8	100.2	92.7	95.6		87.0		109.4	100.0
February	105.0	106.4		113.7	98.9	100.6	92.7	95.6		87.0		109.4	100.0
March (P)	105.1	106.5		113.2	98.9	100.5	92.7	95.6		87.0		109.4	100.0

Percentage Change (P)

Mar 2014 over Feb 2014	0.1	0.1		-0.4	0.0	-0.1	0.0	0.0		0.0		0.0	0.0
Mar 2014 over Mar 2013	0.4	0.3		-0.7	0.4	-1.0	-2.2	-2.0		0.0		9.4	-0.8

Source : Samoa Bureau Statistics
(P): Provisional figures
Note: n.a. Not applicable

Commodities	Weight	Unit	2013			2014		
			Jan	Feb	Mar	Jan	Feb	Mar (P)
Health								
Paracetamol	3.7	20tablet	1.88	1.88	1.75	1.75	1.75	1.75
Magnesium Trisillicate	3.6	120mls	8.13	8.13	8.13	7.30	7.30	7.30
Cough Mixture	3.6	100mls	9.50	9.50	9.50	9.40	9.40	9.40
Hospital Charge	2.1	per night	5.00	5.00	5.00	10.00	10.00	10.00
Transport								
Petrol	39.1	ltr	2.97	2.97	3.09	3.04	3.18	3.10
Labour charge car repair	9.1	min crg	51.67	51.67	51.67	51.67	51.67	51.67
Air Fares Apia-Auckland-Apia	7.8	return	1834.00	1505.45	1477.00	2162.06	1917.45	1453.25
Air Fares Fagalii-Pago	7.8	return	380.00	370.00	370.00	365.00	380.00	380.00
Bus Fares Apia-Motootua Hosp	3.7	per trip	0.80	0.80	0.80	0.80	0.80	0.80
Bus Fares Apia-Malua	3.7	per trip	2.00	2.00	2.00	2.00	2.00	2.00
Bus Fares Apia-Falefa	3.7	per trip	3.20	3.20	3.20	3.20	3.20	3.20
Car Tyre 205/70R(14)	3.7	size 14	252.50	252.50	227.50	215.00	215.00	215.00
Taxi Fares PO-Motootua Hosp	3.3	per trip	3.50	3.50	3.50	3.50	3.50	3.50
Taxi Fares Po-Malua	3.3	per trip	26.10	26.10	26.10	26.10	26.10	26.10
Taxi Fares PO-Falefa	3.3	per trip	36.00	36.00	36.00	36.00	36.00	36.00
Diesel	2.8	ltr	3.06	3.07	3.13	3.18	3.31	3.17
Car Registration 1500-2000 cc	2.0	ann rate	290.00	290.00	290.00	290.00	290.00	290.00
Boat Fares Mulifanua-Salelologa	1.3	one way	12.00	12.00	12.00	12.00	12.00	12.00
Communication								
Telephone local call	23.6	1 min	0.06	0.06	0.06	0.06	0.06	0.06
Telephone NZ call	10.6	3 mins	2.55	2.55	2.55	2.55	2.55	2.55
Telephone USA call	10.6	3 mins	5.37	5.37	5.37	5.37	5.37	5.37
Telephone Rental	10.6	monthly	24.15	24.15	24.15	24.15	24.15	24.15
Internet Prepaid Rates (a)	2.6	30 mins	5.10	5.10	5.10	5.10	5.10	5.10
PO Box rental (small box)	0.2	ann rate	80.00	80.00	80.00	80.00	80.00	80.00
Recreation and Culture								
National Lotto (a)	23.6	ticket	7.00	7.00	7.00	7.00	7.00	7.00
Tattslotto	3.8	ticket	13.50	13.50	13.50	13.50	13.50	13.50
News Paper Samoa Observer	2.7	each	2.50	2.50	2.50	2.50	2.50	2.50
Education								
School Fees Primary	10.5	Yr 4	10.00	10.00	10.00	10.00	10.00	10.00
School Fees Secondary	8.1	Yr 10	50.00	50.00	50.00	50.00	50.00	50.00
School Fees Primary	7.6	Yr 8	20.00	20.00	20.00	20.00	20.00	20.00
School Fees (NUS registration)	5.1	tertiary	265.00	265.00	265.00	265.00	265.00	265.00
Restaurants								
Meal (Fish & Chips)	11.0	1 serve	8.00	8.00	8.00	9.00	9.00	9.00
Meal (Pinati)	3.7	1 serve	3.00	3.00	3.00	3.00	3.00	3.00
Miscellaneous goods and services								
Toilet soap	7.6	90g	1.10	1.09	1.11	1.13	1.13	1.13
Diapers (16kg & over)	7.2	24pkt	37.97	37.97	37.98	37.40	37.40	37.40
Toilet Paper	3.6	roll	0.95	0.95	0.95	0.90	0.90	0.90

Source : Samoa Bureau Statistics

(a) : New commodity from August 2010

(b) : Average price across all brands

(c) : Revised figures

(P) : Provisional figures

Table 3. IMPORTED GOODS COMPONENT OF THE CONSUMER PRICE INDEX
(Base Period : Average Prices August 2010 = 100)

Group	All Items	Food and Non Alcoholic Beverages	Alcoholic Beverages and Tobacco	Clothing and Footwear	Housing, Water, Electricity, Gas and other Fuels	Furnishings, Household Equipment and Maintenance	Health	Transport	Communication	Recreation and Culture	Education	Restaurants	Miscellaneous goods and services
Weights	424.8	272.0	17.1	10.9	17.5	22.7	12.8	46.8	n.a.	1.3	n.a.	n.a.	23.7
Ave - 2011	105.5	105.6	112.9	102.5	101.2	101.1	98.4	111.6		81.1			100.3
Ave - 2012	106.7	105.7	113.9	110.6	103.8	102.1	95.1	118.6		76.7			100.9
Ave - 2013	106.9	106.2	112.1	110.9	101.7	103.0	95.2	119.7		77.0			100.7
2013													
March	107.1	106.2	111.9	111.7	101.2	102.9	94.4	121.4		77.0			100.8
April	106.7	105.8	111.9	110.3	100.4	102.9	96.1	119.9		77.0			100.4
May	106.5	105.8	111.9	110.2	101.6	102.9	96.1	117.5		77.0			101.5
June	106.4	106.1	111.9	110.0	98.8	103.1	96.0	115.8		77.0			101.1
July	107.6	106.9	111.9	109.5	102.5	103.2	96.0	120.7		77.0			101.1
August	107.5	106.4	111.9	109.6	103.2	102.7	95.2	123.6		77.0			100.7
September	108.0	107.1	111.9	109.6	102.0	102.9	95.2	123.9		77.0			100.7
October	107.0	106.0	111.9	112.3	102.7	102.7	95.2	120.9		77.0			101.6
November	106.7	105.8	111.5	112.5	102.4	103.5	95.2	119.4		77.0			100.4
December	106.9	106.7	115.2	111.4	101.4	103.0	91.6	116.7		77.0			99.4
2014													
January	107.7	107.6	115.2	109.2	101.2	102.4	92.1	119.3		77.0			100.0
February	107.9	106.8	115.2	111.1	102.0	102.9	92.1	124.2		77.0			100.0
March (P)	107.6	107.1	115.2	110.4	101.2	102.7	92.1	121.3		77.0			100.0
Percentage Change (P)													
Mar 2014 over Feb 2014	-0.2	0.2	0.0	-0.7	-0.8	-0.1	0.0	-2.4		0.0			0.0
Mar 2014 over Mar 2013	0.5	0.8	3.0	-1.2	0.0	-0.1	-2.4	-0.1		0.0			-0.8
IMPORTED ITEMS UNDERLYING INDEX													
Group	All Items	Food and Non Alcoholic Beverages	Alcoholic Beverages and Tobacco	Clothing and Footwear	Housing, Water, Electricity, Gas and other Fuels	Furnishings, Household Equipment and Maintenance	Health	Transport	Communication	Recreation and Culture	Education	Restaurants	Miscellaneous goods and services
Weights	362.8	272.0	n.a.	10.9	15.4	22.7	12.8	4.0	n.a.	1.3	n.a.	n.a.	23.7
Ave - 2011	104.3	105.6		102.5	99.4	101.1	98.4	109.2		81.1			100.3
Ave - 2012	104.9	105.7		110.6	101.4	102.1	95.1	122.0		76.7			100.9
Ave - 2013	105.0	106.2		110.9	98.9	103.0	95.2	113.2		77.0			100.7
2013													
March	105.0	106.2		111.7	98.0	102.9	94.4	113.7		77.0			100.8
April	104.7	105.8		110.3	97.6	102.9	96.1	113.7		77.0			100.4
May	104.8	105.8		110.2	99.2	102.9	96.1	109.8		77.0			101.5
June	104.9	106.1		110.0	96.2	103.1	96.0	109.9		77.0			101.1
July	105.6	106.9		109.5	99.8	103.2	96.0	109.9		77.0			101.1
August	105.2	106.4		109.6	100.2	102.7	95.2	109.9		77.0			100.7
September	105.7	107.1		109.6	98.9	102.9	95.2	109.7		77.0			100.7
October	104.9	106.0		112.3	99.4	102.7	95.2	109.7		77.0			101.6
November	104.8	105.8		112.5	99.2	103.5	95.2	109.7		77.0			100.4
December	105.2	106.7		111.4	98.5	103.0	91.6	109.7		77.0			99.4
2014													
January	105.8	107.6		109.2	97.9	102.4	92.1	107.2		77.0			100.0
February	105.3	106.8		111.1	97.9	102.9	92.1	107.2		77.0			100.0
March (P)	105.4	107.1		110.4	97.9	102.7	92.1	107.2		77.0			100.0
Percentage Change (P)													
Mar 2014 over Feb 2014	0.1	0.2		-0.7	0.0	-0.1	0.0	0.0		0.0			0.0
Mar 2014 over Mar 2013	0.4	0.8		-1.2	-0.1	-0.1	-2.4	-5.7		0.0			-0.8

Source : Samoa Bureau Statistics
(P); Provisional figures
Note: n.a. Not applicable

Table 4. LOCAL GOODS COMPONENT OF THE CONSUMER PRICE INDEX
(Base Period : Average Prices August 2010 = 100)

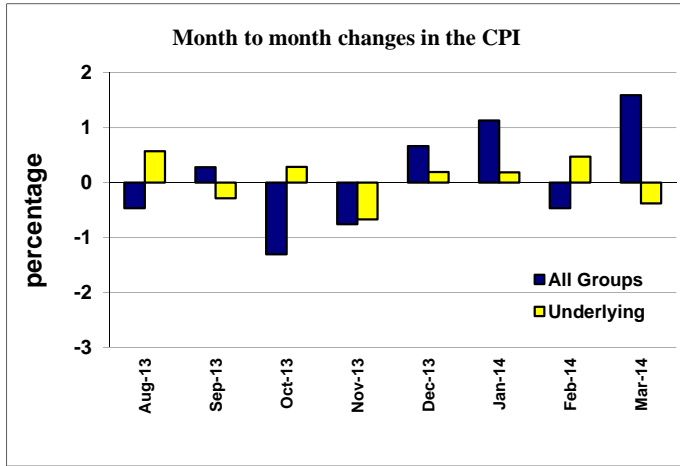
Group	All Items	Food and Non Alcoholic Beverages	Alcoholic Beverages and Tobacco	Clothing and Footwear	Housing, Water, Electricity, Gas and other Fuels	Furnishings, Household Equipment and Maintenance	Health	Transport	Communication	Recreation and Culture	Education	Restaurants	Miscellaneous goods and services
Weights	575.2	229.8	79.6	6.4	60.6	8.6	3.0	50.3	58.2	32.7	31.3	14.7	n.a.
Ave - 2011	105.9	111.2	103.3	106.4	108.0	98.9	100.0	101.8	100.0	98.7	100.0	100.0	
Ave - 2012	108.8	115.8	106.5	117.3	110.3	95.9	100.0	104.2	100.0	98.8	101.6	100.0	
Ave - 2013	109.8	116.9	110.5	117.9	108.8	97.1	100.0	104.4	100.0	99.4	101.6	101.6	
2013													
March	114.8	131.2	108.1	117.9	107.3	97.8	100.0	102.5	100.0	98.8	101.6	100.0	
April	112.7	124.5	110.2	117.9	109.3	97.5	100.0	104.1	100.0	98.8	101.6	100.0	
May	111.3	120.9	110.2	117.9	109.3	97.5	100.0	104.2	100.0	98.8	101.6	100.0	
June	108.8	113.8	111.6	117.9	107.2	98.6	100.0	107.9	100.0	99.8	101.6	100.0	
July	107.8	110.9	111.6	117.9	108.2	98.6	100.0	108.6	100.0	99.8	101.6	100.0	
August	107.0	109.7	111.6	117.9	108.2	98.6	100.0	104.7	100.0	99.8	101.6	100.0	
September	107.1	108.4	111.6	117.9	110.4	96.2	100.0	109.6	100.0	99.8	101.6	100.0	
October	105.4	105.9	111.7	117.9	110.4	96.2	100.0	101.2	100.0	99.8	101.6	100.0	
November	104.2	103.1	111.7	117.9	110.4	94.2	100.0	98.0	100.0	99.8	101.6	109.4	
December	105.3	104.8	111.7	117.9	110.4	94.2	100.0	102.7	100.0	99.8	101.6	109.4	
2014													
January	106.8	106.0	111.7	117.9	110.4	94.5	170.0	110.2	100.0	99.8	101.6	109.4	
February	105.9	103.5	114.1	117.9	110.4	94.5	170.0	107.7	100.0	99.8	101.6	109.4	
March (P)	108.9	112.1	114.5	117.9	110.4	94.5	170.0	102.0	100.0	99.8	101.6	109.4	
Percentage Change (P)													
Mar 2014 over Feb 2014	2.8	8.3	0.4	0.0	0.0	0.0	0.0	-5.3	0.0	0.0	0.0	0.0	0.0
Mar 2014 over Mar 2013	-5.1	-14.5	5.9	0.0	3.0	-3.3	70.0	-0.4	0.0	0.9	0.0	9.4	
LOCAL ITEMS UNDERLYING INDEX													
Group	All Items	Food and Non Alcoholic Beverages	Alcoholic Beverages and Tobacco	Clothing and Footwear	Housing, Water, Electricity, Gas and other Fuels	Furnishings, Household Equipment and Maintenance	Health	Transport	Communication	Recreation and Culture	Education	Restaurants	Miscellaneous goods and services
Weights	117.4	75.5	n.a.	6.4	1.2	8.6	0.9	9.1	n.a.	1.0	n.a.	14.7	n.a.
Ave - 2011	100.7	102.0		106.4	105.3	98.9	100.0	88.6		100.0		100.0	
Ave - 2012	102.5	103.9		117.3	105.2	95.9	100.0	90.5		100.0		100.0	
Ave - 2013	103.8	105.5		117.9	105.9	97.1	100.0	90.5		100.0		101.6	
2013													
March	103.8	105.8		117.9	105.5	97.8	100.0	90.5		100.0		100.0	
April	103.8	105.8		117.9	104.2	97.5	100.0	90.5		100.0		100.0	
May	103.8	105.7		117.9	104.2	97.5	100.0	90.5		100.0		100.0	
June	103.8	105.6		117.9	104.2	98.6	100.0	90.5		100.0		100.0	
July	103.9	105.9		117.9	103.6	98.6	100.0	90.5		100.0		100.0	
August	104.0	106.0		117.9	103.4	98.6	100.0	90.5		100.0		100.0	
September	103.7	105.6		117.9	107.3	96.2	100.0	90.5		100.0		100.0	
October	103.2	105.0		117.9	108.5	96.2	100.0	90.5		100.0		100.0	
November	104.2	104.9		117.9	110.8	94.2	100.0	90.5		100.0		109.4	
December	104.1	104.6		117.9	110.8	94.2	100.0	90.5		100.0		109.4	
2014													
January	104.3	104.3		117.9	110.6	94.5	100.0	90.5		100.0		109.4	
February	104.3	104.3		117.9	111.6	94.5	100.0	90.5		100.0		109.4	
March (P)	103.9	103.9		117.9	111.6	94.5	100.0	90.5		100.0		109.4	
Percentage Change (P)													
Mar 2014 over Feb 2014	-0.4	-0.4		0.0	0.0	0.0	0.0	0.0		0.0		0.0	
Mar 2014 over Mar 2013	0.1	-1.8		0.0	5.8	-3.4	0.0	0.0		0.0		9.4	

Source : Samoa Bureau Statistics

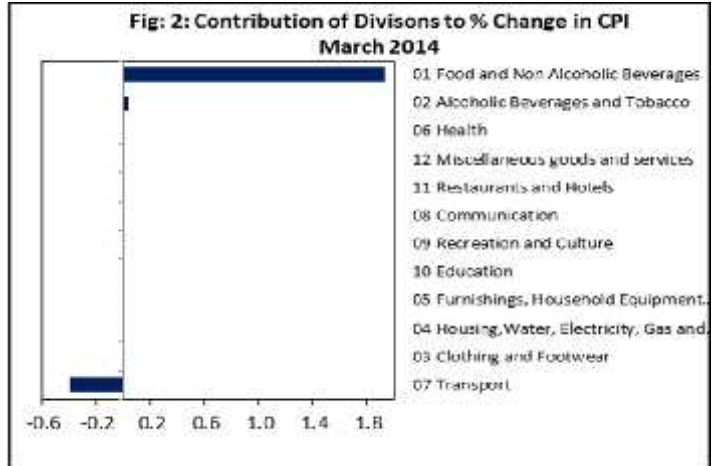
(P): Provisional figures

Note: n.a. Not applicable

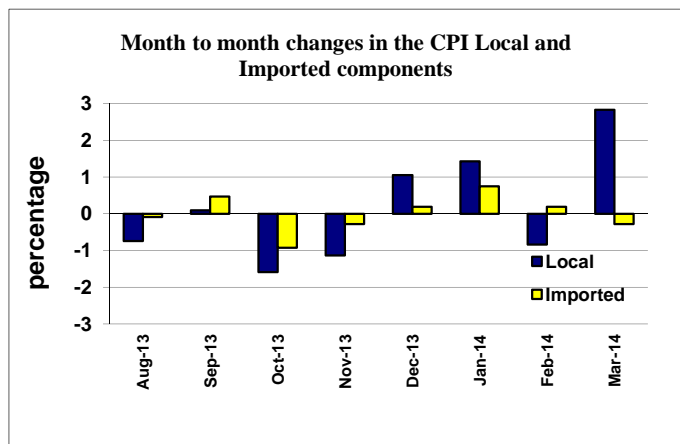
Graph.1



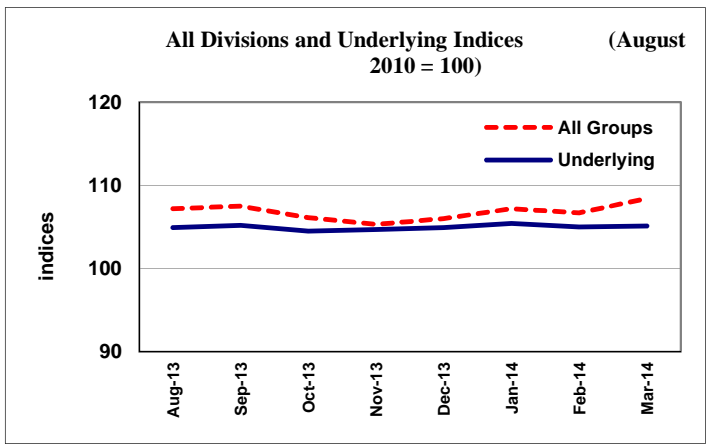
Graph.2



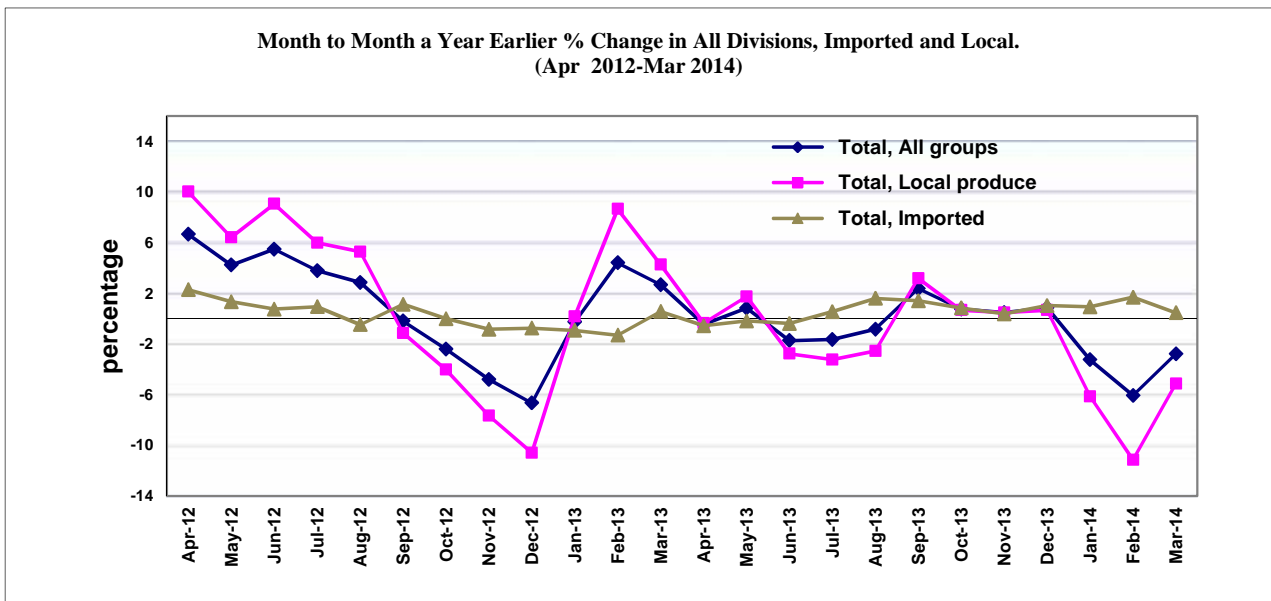
Graph.3



Graph.4



Graph 5



Source: Samoa Bureau of Statistics