

Please address all correspondence  
To Government Statistician

In reply, please quote the file reference



GOVERNMENT OF SAMOA

File Ref: CPI 12/14

## SAMOA BUREAU OF STATISTICS

# CONSUMER PRICE INDEX December 2014

### Key findings:

The Consumer Price Index for December 2014 increased by 2.7 percent compared from the previous month.

- The Food and Non Alcoholic Beverages index increased by 6.8 percent.
- Health index also increased by 6.5 percent.
- Transport index decreased by 6.1 percent.
- The Average Annual Inflation for the year ended December 2014 was 0.4 percent.

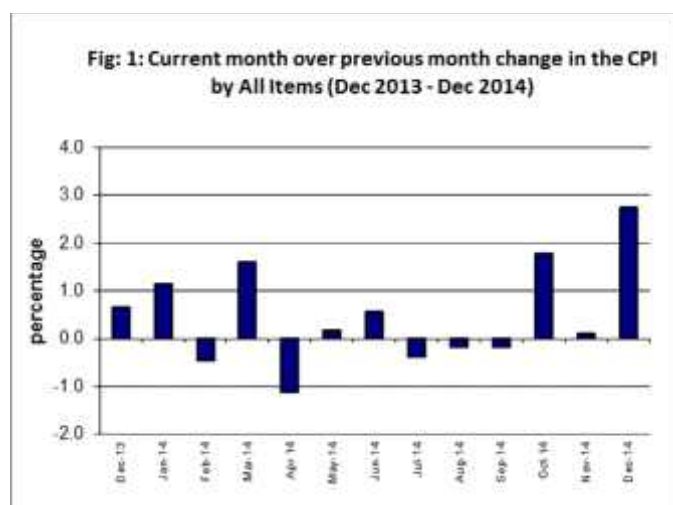
In the year to December 2014, the CPI rose 5.8 percent.

### SUMMARY

The Consumer Price Index for December 2014 was 2.7 percent higher than November 2014, and was 5.8 percent higher than December 2013.

The increase of the Local Goods component by 5.4 percent from the previous month was due to higher prices for market staples and fresh fish, which was also the main contributor to the increase of 2.7 percent in the All Items Consumer Price Index.

The Imported Goods Component recorded a decrease of 0.8 percent over November 2014. Figure 1 shows the month to month percentage changes in the Consumer Price Index by all Divisions from December 2013 to December 2014.

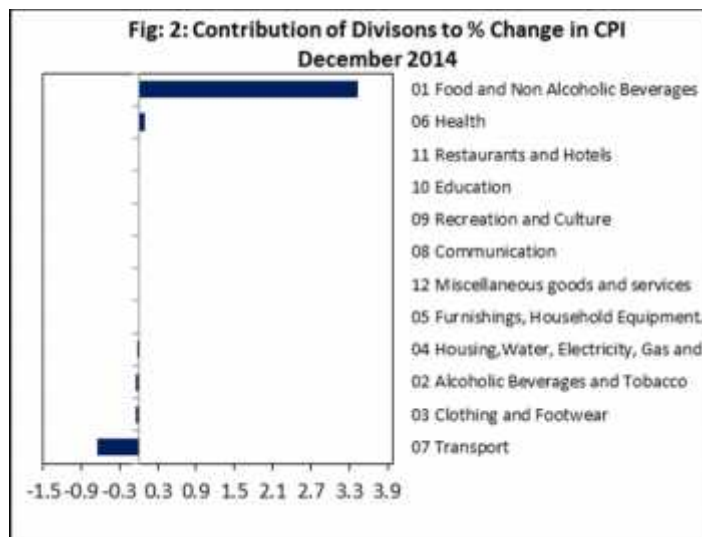


Source : Samoa Bureau of Statistics

### Total All Divisions Contribution

Food and Non Alcoholic Beverages division, with a positive contribution of 3.4 percent, was the main contributor to the overall increase of 2.7 percent in the All Division Consumer Price Index.

On the other hand, there were offsetting contributions from Transport division Index with 0.6 percent.



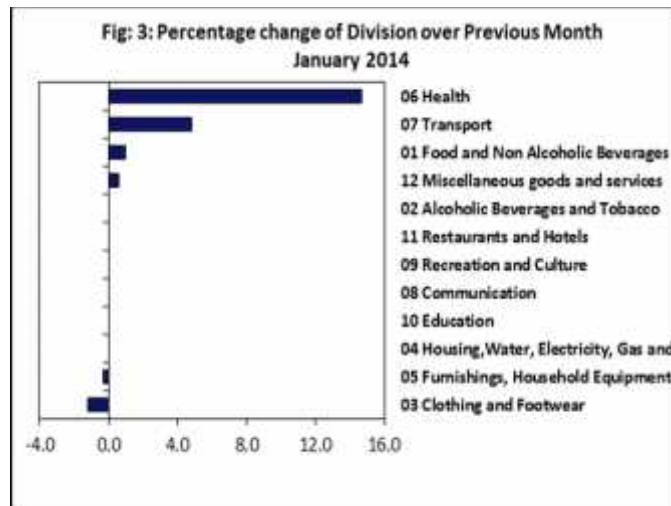
Source : Samoa Bureau of Statistics

### Consumer Price Index (% Change)

The 2.7 percent increase in the Overall Index was mainly due to an increase of 6.8 percent in Food and Non Alcoholic Beverages index while Health also showed an increase of 6.5 percent.

On the other hand, Transport, Alcoholic Beverages and Tobacco and Housing, Water, Electricity, Gas and other Fuels indices recorded decreases of 6.1, 0.4 and 0.2 percent respectively.

No changes were recorded for the Clothing and Footwear, Furnishing, Household Equipment and Maintenance, Communication, Recreation and culture, Education, Miscellaneous Goods and Services and Restaurants indices. Graphically presented in Fig 3 is the December 2014 percentage change for all divisions from November 2014.



Source : Samoa Bureau of Statistics

### Local Goods Component

The Local Goods Component of the Consumer Price Index registered an increase of 5.4 percent when compared to the previous month. This increase was mainly due to higher prices recorded for taro, taamu, fresh fish (piece, large and string), yam, breadfruit, pumpkin and tomatoes.

### Imported Goods Component

Decreased prices recorded for rice and fuel (petrol and diesel) have resulted in the 0.8 percent decrease in the Imported Good Component.

### Food and Non Alcoholic Beverages Index

Higher prices recorded for taro, taamu, fresh fish (piece, large and string), yam, breadfruit, pumpkin and tomatoes is reflected in the 6.8 percent increase in the Food and Non Alcoholic Beverages index.



### Health Index

An increase of 6.5 percent in the Health index was mainly due to higher prices recorded for paracetamol.

### Transport Index

The 6.1 percent decrease in the Transport index was result of the lower prices recorded for fuel (petrol and diesel) and airline fares (Apia-Auckland-Apia).

### Alcoholic Beverages and Tobacco Index

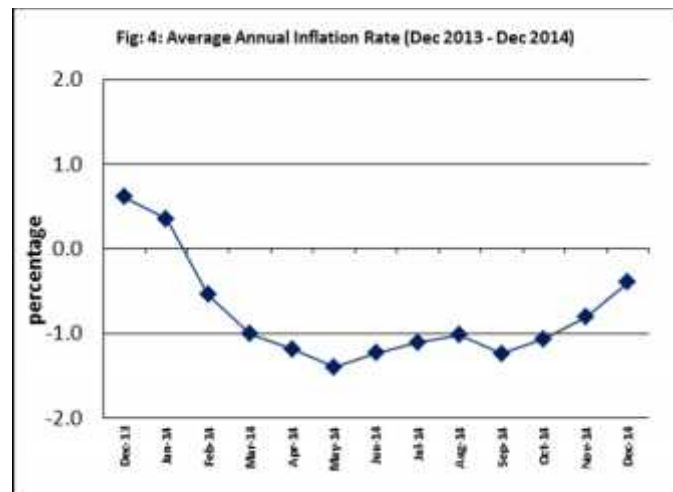
Decreased prices recorded for spirit (nip vodka and whisky) are reflected in the 0.4 percent decrease in the Alcoholic Beverages and Tobacco index.

### Underlying Indices <sup>1/</sup>

The All Items Underlying Index for December 2014 registered no change when compared to November 2014, and an increase of 1.1 percent when compared to December last year. The Imported and Local Component of All Items Underlying Index both registered decreases of 0.1 percent.

### Inflation Rate

The average annual inflation rate for the year ended December 2014 was negative 0.4 percent. For the twelve months ending December 2013 the inflation rate was 0.6 percent. Presented in Fig 4 is the Average annual inflation rate (December 2013 - December 2014).



Source : Samoa Bureau of Statistics

The attached Tables and Graphs provide the user with more detailed analysis.



Date of release: 13<sup>th</sup> January 2015

The next Consumer Price Index will be released on 10<sup>th</sup> February 2015

<sup>1/</sup>Underlying inflation is measure of inflation that excludes certain items that face volatile price movements. Underlying inflation eliminates products that can have temporary price shocks because these shocks can diverge from the overall trend of inflation and give a false measure of inflation.

Underlying inflation can also exclude government charges as they change rarely and are not set by an open market and so may also give a false measure of inflation. Prices that are subject to price control or subsidy could also be removed for the same reasons.

Table 1. CONSUMER PRICE INDEX.

(Base Period : Average Prices August 2010 = 100)

Group	All Items	Food and Non Alcoholic Beverages	Alcoholic Beverages and Tobacco	Clothing and Footwear	Housing, Water, Electricity, Gas and other Fuels	Furnishings, Household Equipment, and Maintenance	Health	Transport	Communication	Recreation and Culture	Education	Restaurants	Miscellaneous goods and services
Weights	1000	502	97	17	78	31	16	97	58	34	31	15	24
Ave - 2011	105.7	108.2	105.0	103.9	106.5	100.5	98.7	106.6	100.0	98.1	100.0	100.0	100.3
Ave - 2012	107.9	110.3	107.8	113.1	108.9	100.4	96.0	111.2	100.0	98.0	101.6	100.0	100.9
Ave - 2013	108.6	111.1	110.8	113.5	107.2	101.4	96.1	111.8	100.0	98.5	101.6	101.6	100.7
2013													
December	106.0	105.8	112.3	113.8	108.4	100.5	93.2	109.4	100.0	98.9	101.6	109.4	99.4
2014													
January	107.2	106.9	112.3	112.4	108.4	100.2	106.9	114.6	100.0	98.9	101.6	109.4	100.0
February	106.7	105.3	114.3	113.7	108.5	100.6	106.9	115.7	100.0	98.9	101.6	109.4	100.0
March	108.4	109.4	114.6	113.2	108.4	100.5	106.9	111.3	100.0	98.9	101.6	109.4	100.0
April	107.2	106.7	113.2	120.1	108.4	99.1	106.9	113.7	100.0	99.0	101.6	109.4	98.5
May	107.4	105.6	113.2	119.5	110.7	99.9	106.9	119.9	100.0	99.0	101.6	109.4	99.0
June	108.0	106.6	114.8	119.3	110.5	99.9	106.9	119.5	100.0	99.0	101.6	109.4	98.2
July	107.6	105.3	114.8	119.3	110.9	99.9	108.1	121.2	100.0	99.0	101.6	109.4	98.5
August	107.4	105.3	114.8	119.2	110.9	99.9	109.2	118.7	100.0	99.0	101.6	109.4	98.5
September	107.2	104.8	114.8	119.2	113.0	100.5	110.6	118.0	100.0	99.0	101.6	109.4	98.5
October	109.1	108.0	114.8	113.1	110.6	100.6	110.5	121.2	100.0	98.9	101.6	109.4	96.4
November	109.2	108.3	114.8	119.2	113.2	100.4	110.5	120.1	100.0	98.9	101.6	109.4	96.3
December (P)	112.2	115.7	114.3	119.2	113.0	100.4	117.7	112.8	100.0	98.9	101.6	109.4	96.3
<b>Percentage Change (P)</b>													
Dec 2014 over Nov 2014	2.7	6.8	-0.4	0.0	-0.2	0.0	6.5	-6.1	0.0	0.0	0.0	0.0	0.0
Dec 2014 over Dec 2013	5.8	9.4	1.8	4.7	4.2	-0.1	26.3	3.1	0.0	0.0	0.0	0.0	-3.1
<b>ALL ITEMS UNDERLYING INDEX</b>													
Group	All Items	Food and Non Alcoholic Beverages	Alcoholic Beverages and Tobacco	Clothing and Footwear	Housing, Water, Electricity, Gas and other Fuels	Furnishings, Household Equipment, and Maintenance	Health	Transport	Communication	Recreation and Culture	Education	Restaurants	Miscellaneous goods and services
Weights	480	348	n.a.	17	17	31	14	13	n.a.	2	n.a.	15	24
Ave - 2011	103.4	104.8		103.9	99.8	100.5	98.5	94.9		89.3		100.0	100.3
Ave - 2012	104.3	105.3		113.1	101.7	100.4	95.4	100.1		86.8		100.0	100.9
Ave - 2013	104.7	106.0		113.5	99.4	101.4	95.5	97.4		87.0		101.6	100.7
2013													
December	104.9	106.2		113.8	99.4	100.5	92.1	96.4		87.0		109.4	99.4
2014													
January	105.4	107.0		112.4	98.8	100.2	92.7	95.6		87.0		109.4	100.0
February	105.0	106.4		113.7	98.9	100.6	92.7	95.6		87.0		109.4	100.0
March	105.1	106.5		113.2	98.9	100.5	92.7	95.6		87.0		109.4	100.0
April	105.0	106.3		120.1	98.9	99.1	92.7	95.6		88.1		109.4	98.5
May	105.0	106.2		119.5	99.1	99.9	92.7	95.6		88.1		109.4	99.0
June	106.4	108.2		119.3	98.8	99.9	92.7	95.6		88.1		109.4	98.2
July	106.6	108.3		119.3	99.8	99.9	94.0	95.6		88.1		109.4	98.5
August	107.1	109.0		119.2	99.8	99.9	95.3	95.6		88.1		109.4	98.5
September	106.8	108.4		119.2	100.0	100.5	96.9	95.6		88.1		109.4	98.5
October	106.2	107.8		119.2	100.4	100.6	96.8	95.6		87.6		109.4	96.4
November	106.1	107.7		119.2	101.0	100.4	96.8	95.6		87.6		109.4	96.3
December (P)	106.1	107.2		119.2	101.1	100.4	105.1	96.4		87.6		109.4	96.3
<b>Percentage Change (P)</b>													
Dec 2014 over Nov 2014	0.0	-0.5		0.0	0.1	0.0	8.6	0.8		0.0		0.0	0.0
Dec 2014 over Dec 2013	1.1	0.9		4.7	1.7	-0.1	14.0	0.0		0.7		0.0	-3.1

Source : Samoa Bureau Statistics

(P): Provisional figures

Note: n.a. Not applicable



Commodities	Weight	Unit	2013			2014		
			Oct	Nov	Dec	Oct	Nov	Dec (P)
<b>Health</b>								
Paracetamol	3.7	20tablet	1.88	1.88	1.75	1.80	1.80	2.10
Magnesium Trisillicate	3.6	120mls	7.30	7.30	7.30	7.60	7.60	7.60
Cough Mixture	3.6	100mls	9.95	9.95	9.20	9.85	9.85	9.90
Hospital Charge	2.1	per night	5.00	5.00	5.00	10.00	10.00	10.00
<b>Transport</b>								
Petrol	39.1	ltr	3.08	3.04	2.96	3.15	3.06	2.90
Labour charge car repair	9.1	min crg	51.67	51.67	51.67	51.67	51.67	51.67
Air Fares Apia-Auckland-Apia	7.8	return	1398.49	1121.10	1551.85	1773.60	1739.50	1206.61
Air Fares Fagalii-Pago	7.8	return	380.00	380.00	365.00	395.00	395.00	370.00
Bus Fares Apia-Motootua Hosp	3.7	per trip	0.80	0.80	0.80	1.30	1.30	1.30
Bus Fares Apia-Malua	3.7	per trip	2.00	2.00	2.00	2.60	2.60	2.60
Bus Fares Apia-Falefa	3.7	per trip	3.20	3.20	3.20	3.70	3.70	3.70
Car Tyre 205/70R(14)	3.7	size 14	220.00	220.00	220.00	215.00	215.00	220.00
Taxi Fares PO-Motootua Hosp	3.3	per trip	3.50	3.50	3.50	4.80	4.80	4.80
Taxi Fares Po-Malua	3.3	per trip	26.10	26.10	26.10	31.30	31.30	31.30
Taxi Fares PO-Falefa	3.3	per trip	36.00	36.00	36.00	43.20	43.20	43.20
Diesel	2.8	ltr	3.19	3.15	3.12	3.14	3.06	2.89
Car Registration 1500-2000 cc	2.0	ann rate	290.00	290.00	290.00	290.00	290.00	290.00
Boat Fares Mulifanua-Salelologa	1.3	one way	12.00	12.00	12.00	12.00	12.00	12.00
<b>Communication</b>								
Telephone local call	23.6	1 min	0.06	0.06	0.06	0.06	0.06	0.06
Telephone NZ call	10.6	3 mins	2.55	2.55	2.55	2.55	2.55	2.55
Telephone USA call	10.6	3 mins	5.37	5.37	5.37	5.35	5.35	5.35
Telephone Rental	10.6	monthly	24.15	24.15	24.15	24.15	24.15	24.15
Internet Prepaid Rates (a)	2.6	30 mins	5.10	5.10	5.10	5.10	5.10	5.10
PO Box rental (small box)	0.2	ann rate	80.00	80.00	80.00	80.00	80.00	80.00
<b>Recreation and Culture</b>								
National Lotto (a)	23.6	ticket	7.00	7.00	7.00	7.00	7.00	7.00
Tattslotto	3.8	ticket	13.50	13.50	13.50	13.50	13.50	13.50
News Paper Samoa Observer	2.7	each	2.50	2.50	2.50	2.50	2.50	2.50
<b>Education</b>								
School Fees Primary	10.5	Yr 4	10.00	10.00	10.00	10.00	10.00	10.00
School Fees Secondary	8.1	Yr 10	50.00	50.00	50.00	50.00	50.00	50.00
School Fees Primary	7.6	Yr 8	20.00	20.00	20.00	20.00	20.00	20.00
School Fees (NUS registration)	5.1	tertiary	265.00	265.00	265.00	265.00	265.00	265.00
<b>Restaurants</b>								
Meal (Fish & Chips)	11.0	1 serve	8.00	9.00	9.00	9.00	9.00	9.00
Meal (Pinati)	3.7	1 serve	3.00	3.00	3.00	3.00	3.00	3.00
<b>Miscellaneous goods and services</b>								
Toilet soap	7.6	90g	1.16	1.13	1.10	1.04	1.04	1.04
Diapers (16kg & over )	7.2	24pkt	37.82	37.78	37.78	37.80	37.80	37.80
Toilet Paper	3.6	roll	0.90	0.90	0.90	0.90	0.90	0.90

Source : Samoa Bureau Statistics

(a) : New commodity from August 2010

(b) : Average price across all brands

(P) : Provisional figures

**Table 3. IMPORTED GOODS COMPONENT OF THE CONSUMER PRICE INDEX**  
(Base Period : Average Prices August 2010 = 100)

Group	All Items	Food and Non Alcoholic Beverages	Alcoholic Beverages and Tobacco	Clothing and Footwear	Housing, Water, Electricity, Gas and other Fuels	Furnishings, Household Equipment and Maintenance	Health	Transport	Communication	Recreation and Culture	Education	Restaurants	Miscellaneous goods and services
<b>Weights</b>	<b>424.8</b>	<b>272.0</b>	<b>17.1</b>	<b>10.9</b>	<b>17.5</b>	<b>22.7</b>	<b>12.8</b>	<b>46.8</b>	<b>n.a.</b>	<b>1.3</b>	<b>n.a.</b>	<b>n.a.</b>	<b>23.7</b>
Ave - 2011	105.5	105.6	112.9	102.5	101.2	101.1	98.4	111.6		81.1			100.3
Ave - 2012	106.7	105.7	113.9	110.6	103.8	102.1	95.1	118.6		76.7			100.9
Ave - 2013	106.9	106.2	112.1	110.9	101.7	103.0	95.2	119.7		77.0			100.7
2013													
December 2014	106.9	106.7	115.2	111.4	101.4	103.0	91.6	116.7		77.0			99.4
January	107.7	107.6	115.2	109.2	101.2	102.4	92.1	119.3		77.0			100.0
February	107.9	106.8	115.2	111.1	102.0	102.9	92.1	124.2		77.0			100.0
March	107.6	107.1	115.2	110.4	101.2	102.7	92.1	121.3		77.0			100.0
April	106.9	106.7	106.0	111.1	101.2	100.8	92.1	121.6		78.9			98.5
May	106.6	106.6	106.0	110.1	100.8	101.9	92.1	118.7		78.9			99.0
June	108.3	108.9	115.2	109.8	100.3	102.0	92.1	118.4		78.9			98.2
July	109.0	109.2	115.2	109.8	101.8	101.9	93.6	121.9		78.9			98.5
August	109.6	110.0	115.2	109.6	101.8	101.9	95.0	122.8		78.9			98.5
September	109.4	109.3	115.2	109.6	102.1	102.8	96.7	124.1		78.9			98.5
October	109.0	108.9	115.2	109.7	102.6	102.8	96.6	122.9		78.1			96.4
November	108.4	108.6	115.2	109.6	102.7	102.5	96.6	119.7		78.1			96.3
December (P)	107.6	108.1	112.2	109.6	102.0	102.5	105.4	114.2		78.1			96.3
<b>Percentage Change (P)</b>													
Dec 2014 over Nov 2014	-0.8	-0.5	-2.7	0.0	-0.7	0.0	9.1	-4.6		0.0			0.0
Dec 2014 over Dec 2013	0.7	1.3	-2.7	-1.6	0.6	-0.5	15.1	-2.2		1.4			-3.1

**IMPORTED ITEMS UNDERLYING INDEX**

Group	All Items	Food and Non Alcoholic Beverages	Alcoholic Beverages and Tobacco	Clothing and Footwear	Housing, Water, Electricity, Gas and other Fuels	Furnishings, Household Equipment and Maintenance	Health	Transport	Communication	Recreation and Culture	Education	Restaurants	Miscellaneous goods and services
<b>Weights</b>	<b>362.8</b>	<b>272.0</b>	<b>n.a.</b>	<b>10.9</b>	<b>15.4</b>	<b>22.7</b>	<b>12.8</b>	<b>4.0</b>	<b>n.a.</b>	<b>1.3</b>	<b>n.a.</b>	<b>n.a.</b>	<b>23.7</b>
Ave - 2011	104.3	105.6		102.5	99.4	101.1	98.4	109.2		81.1			100.3
Ave - 2012	104.9	105.7		110.6	101.4	102.1	95.1	122.0		76.7			100.9
Ave - 2013	105.0	106.2		110.9	98.9	103.0	95.2	113.2		77.0			100.7
2013													
December 2014	105.2	106.7		111.4	98.5	103.0	91.6	109.7		77.0			99.4
January	105.8	107.6		109.2	97.9	102.4	92.1	107.2		77.0			100.0
February	105.3	106.8		111.1	97.9	102.9	92.1	107.2		77.0			100.0
March	105.4	107.1		110.4	97.9	102.7	92.1	107.2		77.0			100.0
April	105.0	106.7		111.1	97.9	100.8	92.1	107.1		78.9			98.5
May	105.0	106.6		110.1	98.1	101.9	92.1	107.2		78.9			99.0
June	106.6	108.9		109.8	97.8	102.0	92.1	107.2		78.9			98.2
July	106.9	109.2		109.8	98.9	101.9	93.6	107.2		78.9			98.5
August	107.6	110.0		109.6	98.9	101.9	95.0	107.2		78.9			98.5
September	107.2	109.3		109.6	99.1	102.8	96.7	107.1		78.9			98.5
October	106.8	108.9		109.7	99.6	102.8	96.6	107.2		78.1			96.4
November	106.6	108.6		109.6	100.2	102.5	96.6	107.1		78.1			96.3
December (P)	106.5	108.1		109.6	100.3	102.5	105.4	109.6		78.1			96.3
<b>Percentage Change (P)</b>													
Dec 2014 over Nov 2014	-0.1	-0.5		0.0	0.2	0.0	9.1	2.4		0.0			0.0
Dec 2014 over Dec 2013	1.3	1.3		-1.6	1.8	-0.5	15.1	0.0		1.4			-3.1

Source : Samoa Bureau Statistics

(P): Provisional figures

Note: n.a. Not applicable

**Table 4. LOCAL GOODS COMPONENT OF THE CONSUMER PRICE INDEX**  
(Base Period : Average Prices August 2010 = 100)

Group	All Items	Food and Non Alcoholic Beverages	Alcoholic Beverages and Tobacco	Clothing and Footwear	Housing, Water, Electricity, Gas and other Fuels	Furnishings, Household Equipment and Maintenance	Health	Transport	Communication	Recreation and Culture	Education	Restaurants	Miscellaneous goods and services
<b>Weights</b>	<b>575.2</b>	<b>229.8</b>	<b>79.6</b>	<b>6.4</b>	<b>60.6</b>	<b>8.6</b>	<b>3.0</b>	<b>50.3</b>	<b>58.2</b>	<b>32.7</b>	<b>31.3</b>	<b>14.7</b>	<b>n.a.</b>
Ave - 2011	105.9	111.2	103.3	106.4	108.0	98.9	100.0	101.8	100.0	98.7	100.0	100.0	
Ave - 2012	108.8	115.8	106.5	117.3	110.3	95.9	100.0	104.2	100.0	98.8	101.6	100.0	
Ave - 2013	109.8	116.9	110.5	117.9	108.8	97.1	100.0	104.4	100.0	99.4	101.6	101.6	
2013													
December	105.3	104.8	111.7	117.9	110.4	94.2	100.0	102.7	100.0	99.8	101.6	109.4	
2014													
January	106.8	106.0	111.7	117.9	110.4	94.5	170.0	110.2	100.0	99.8	101.6	109.4	
February	105.9	103.5	114.1	117.9	110.4	94.5	170.0	107.7	100.0	99.8	101.6	109.4	
March	108.9	112.1	114.5	117.9	110.4	94.5	170.0	102.0	100.0	99.8	101.6	109.4	
April	107.3	106.7	114.7	135.5	110.4	94.5	170.0	106.3	100.0	99.8	101.6	109.4	
May	108.0	104.4	114.7	135.5	113.5	94.5	170.0	121.0	100.0	99.8	101.6	109.4	
June	107.8	104.0	114.7	135.5	113.5	94.5	170.0	120.5	100.0	99.8	101.6	109.4	
July	106.6	100.8	114.7	135.5	113.5	94.5	170.0	120.7	100.0	99.8	101.6	109.4	
August	105.7	99.8	114.7	135.5	113.5	94.5	170.0	114.9	100.0	99.8	101.6	109.4	
September	105.7	99.6	114.7	135.5	116.2	94.5	170.0	112.3	100.0	99.8	101.6	109.4	
October	109.2	106.9	114.7	135.5	116.2	95.0	170.0	119.7	100.0	99.8	101.6	109.4	
November	109.7	107.8	114.7	135.5	116.2	95.0	170.0	120.4	100.0	99.8	101.6	109.4	
December (P)	115.6	124.6	114.7	135.5	116.2	95.0	170.0	111.5	100.0	99.8	101.6	109.4	
<b>Percentage Change (P)</b>													
Dec 2014 over	5.4	15.6	0.0	0.0	0.0	0.0	0.0	-7.4	0.0	0.0	0.0	0.0	
Nov 2014													
Dec 2014 over	9.8	18.9	2.7	14.9	5.2	0.8	70.0	8.6	-0.1	0.0	0.0	0.0	
Dec 2013													
<b>LOCAL ITEMS UNDERLYING INDEX</b>													
Group	All Items	Food and Non Alcoholic Beverages	Alcoholic Beverages and Tobacco	Clothing and Footwear	Housing, Water, Electricity, Gas and other Fuels	Furnishings, Household Equipment and Maintenance	Health	Transport	Communication	Recreation and Culture	Education	Restaurants	Miscellaneous goods and services
<b>Weights</b>	<b>117.4</b>	<b>75.5</b>	<b>n.a.</b>	<b>6.4</b>	<b>1.2</b>	<b>8.6</b>	<b>0.9</b>	<b>9.1</b>	<b>n.a.</b>	<b>1.0</b>	<b>n.a.</b>	<b>14.7</b>	<b>n.a.</b>
Ave - 2011	100.7	102.0		106.4	105.3	98.9	100.0	88.6		100.0		100.0	
Ave - 2012	102.5	103.9		117.3	105.2	95.9	100.0	90.5		100.0		100.0	
Ave - 2013	103.8	105.5		117.9	105.9	97.1	100.0	90.5		100.0		101.6	
2013													
December	104.1	104.6		117.9	110.8	94.2	100.0	90.5		100.0		109.4	
2014													
January	104.3	104.3		117.9	110.6	94.5	100.0	90.5		100.0		109.4	
February	104.3	104.3		117.9	111.6	94.5	100.0	90.5		100.0		109.4	
March	103.9	103.9		117.9	111.6	94.5	100.0	90.5		100.0		109.4	
April	105.3	105.3		135.5	111.6	94.5	100.0	90.5		100.0		109.4	
May	105.2	105.2		135.5	111.6	94.5	100.0	90.5		100.0		109.4	
June	105.7	105.7		135.5	111.6	94.5	100.0	90.5		100.0		109.4	
July	105.5	105.5		135.5	111.6	94.5	100.0	90.5		100.0		109.4	
August	105.7	105.7		135.5	111.6	94.5	100.0	90.5		100.0		109.4	
September	105.6	105.6		135.5	111.6	94.5	100.0	90.5		100.0		109.4	
October	104.5	104.5		135.5	111.6	95.0	100.0	90.5		100.0		109.4	
November	104.8	104.8		135.5	111.5	95.0	100.0	90.5		100.0		109.4	
December (P)	104.7	104.7		135.5	111.5	95.0	100.0	90.5		100.0		109.4	
<b>Percentage Change (P)</b>													
Nov 2014 over	-0.1	-0.1		0.0	0.0	0.0	0.0	0.0		0.0		0.0	
Oct 2014													
Nov 2014 over	0.6	0.1		14.9	0.6	0.8	0.0	0.0		0.0		0.0	
Nov 2013													

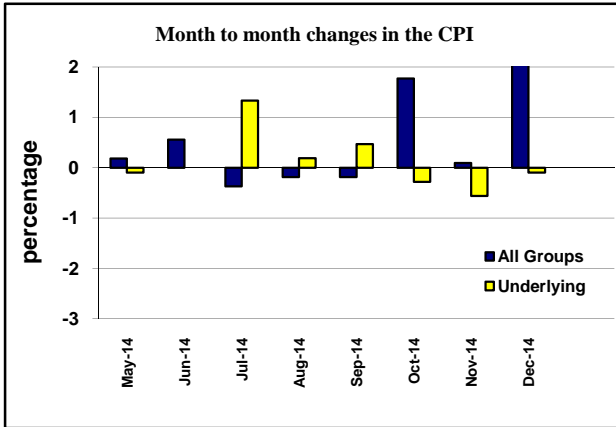
Source : Samoa Bureau Statistics

(P): Provisional figures

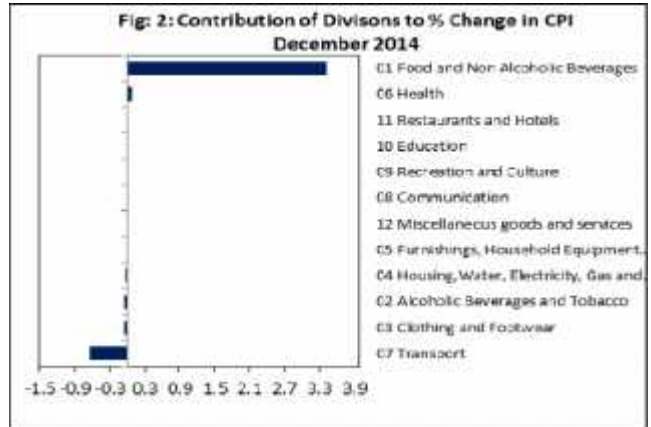
Note: n.a. Not applicable



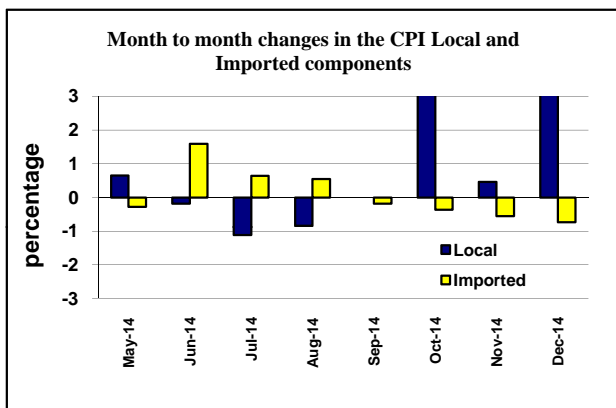
Graph.1



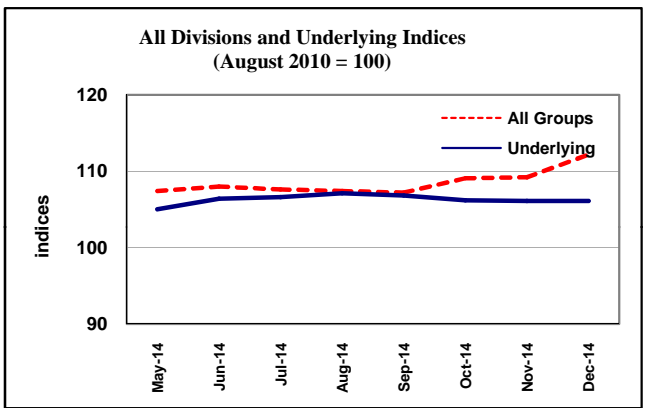
Graph.2



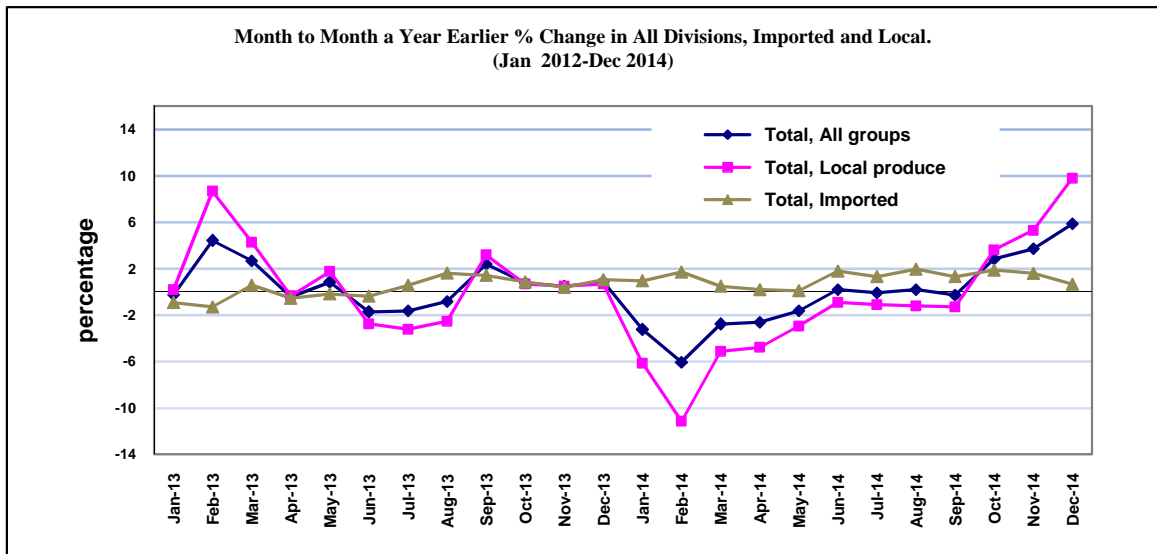
Graph.3



Graph.4



Graph 5



Source: Samoa Bureau of Statistics