

Please address all correspondence
To Government Statistician
In reply, please quote the file reference



File Ref: CPI 11/14

GOVERNMENT OF SAMOA

SAMOA BUREAU OF STATISTICS

CONSUMER PRICE INDEX

November 2014

Key findings:

The Consumer Price Index for November 2014 increased marginally by 0.1 percent compared to the previous month.

- The Food and Non Alcoholic Beverages index increased by 0.3 percent.
- Transport index decreased by 0.9 percent.
- The Average Annual Inflation for the year ended November 2014 with negative 0.8 percent.

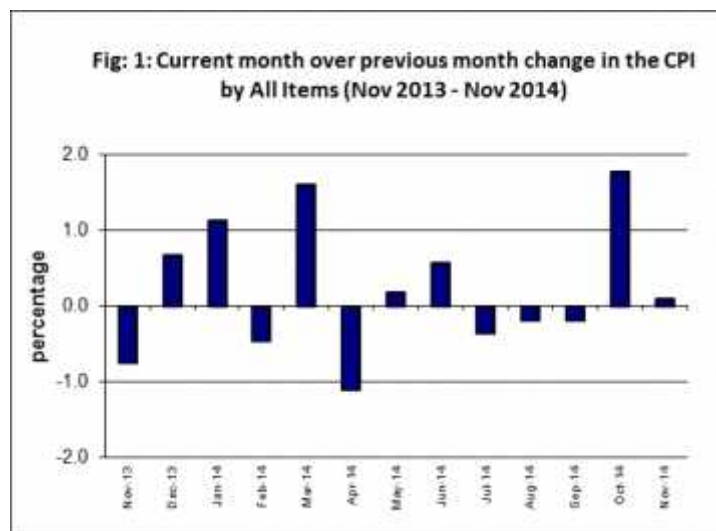
In the year to November 2014 the CPI rose 3.7 percent.

SUMMARY

The Consumer Price Index for November 2014 was 0.1 percent higher than in October 2014 and was 3.7 percent higher than November 2013.

The increase of the Local Goods Component by 0.4 percent reflects higher prices for market staples and also the main contributor to the increase of 0.1 percent in the All Items Consumer Price Index.

The Imported Component recorded a decrease of 0.5 percent over October 2014. Figure 1 shows the month to month percentage changes in the Consumer Price Index by all Divisions from November 2013 to November 2014.

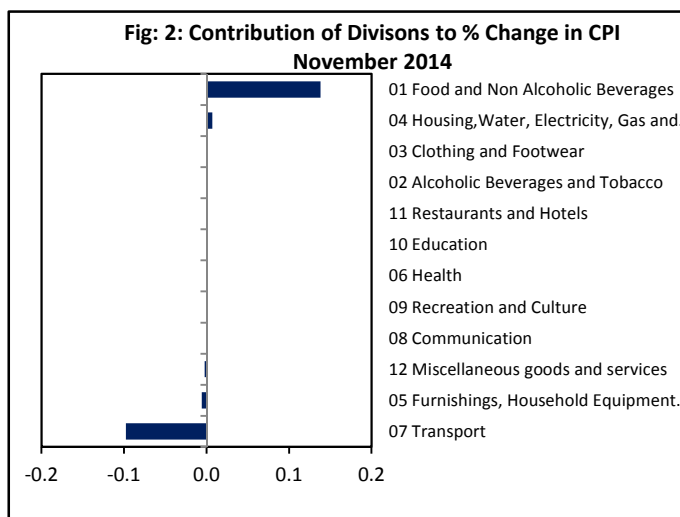


Source : Samoa Bureau of Statistics

Total All Divisions Contribution

Food and Non Alcoholic Beverages division was the main contributor to the overall increase of 0.1 percent in the All Division Consumer Price Index.

On the other hand, there was offsetting contributions from Transport division Index with 0.1 percent.



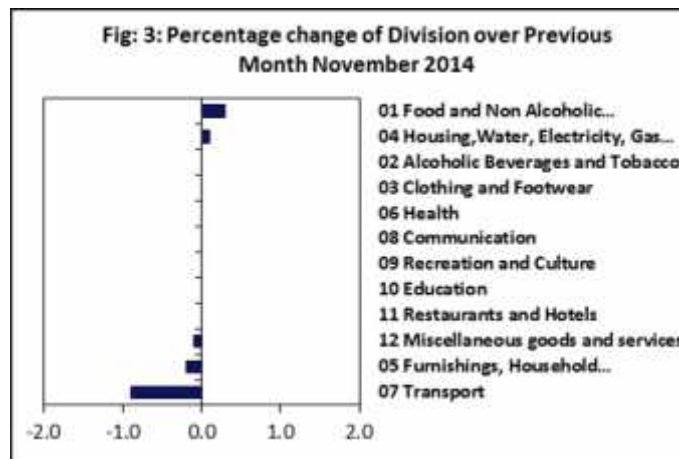
Source : Samoa Bureau of Statistics

Consumer Price Index (% Change)

The Food and Non Alcoholic Beverages index recorded an increase of 0.3 percent, while Housing, Water, Electricity, Gas and other Fuels index also showed an increase of 0.1 percent.

On the other hand, decreases were recorded for Transport with 0.9 percent, Furnishing, Household Equipment and Maintenance with 0.2 percent and Miscellaneous Goods and Services with 0.1 percent.

No changes were recorded for the Alcoholic Beverages and Tobacco, Clothing and Footwear, Health, Communication, Recreation and culture, Education and Restaurants indices. Graphically presented in Fig 3 is the November 2014 percentage change for all divisions from October 2014.



Source : Samoa Bureau of Statistics

Local Goods Component

The Local Goods Component of the Consumer Price Index registered an increase of 0.4 percent when compared to the previous month. This increase was mainly due to higher prices recorded for taamu, banana, fresh fish (large), chinese cabbage and pumpkin.

Imported Goods Component

A decreased price recorded for chicken leg quarter, canned fish (natural oil) and fuel (petrol and diesel) resulted in the 0.5 percent decrease in the Imported Good Component.

Food and Non Alcoholic Beverages Index

The 0.3 percent increase in the Food and Non Alcoholic Beverages index was mainly due to higher prices recorded for mutton flap, taamu, banana, fresh fish (large), chinese cabbage and pumpkin.



Transport Index

A decrease of 0.9 percent in the Transport index was a reflection of the lower prices recorded for fuel (petrol and diesel).

Furnishings, Household Equipment, and Maintenance Index

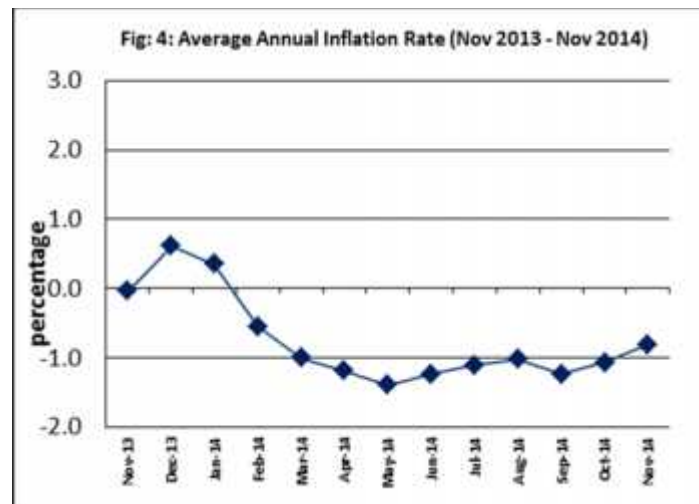
The 0.2 percent decrease in the Furnishing, Household, Equipment and Maintenance Index was a result of the lower prices recorded for sheeting material and bush knife.

Underlying Indices ^{1/}

The All Items Underlying Index for November 2014 registered a decrease of 0.1 percent when compared to October 2014, and an increase of 1.3 percent when compared to November 2013. The Imported Items Underlying Index recorded a decrease of 0.2 percent while the Local Items Underlying Index recorded an increase of 0.3 percent.

Average Annual Inflation Rate

The average annual inflation rate for the year ended November 2014 was negative 0.8 percent. For the twelve months ending November 2013 there was no change recorded. Presented in Fig 4 is the Average annual inflation rate (November 2013 - November 2014).



Source : Samoa Bureau of Statistics

The attached Tables and Graphs provide the user with more detailed analysis.



Date of release: 9th December 2014.

The next Consumer Price Index will be released on 13th January 2015.

^{1/}Underlying inflation is measure of inflation that excludes certain items that face volatile price movements. Underlying inflation eliminates products that can have temporary price shocks because these shocks can diverge from the overall trend of inflation and give a false measure of inflation.

Underlying inflation can also exclude government charges as they change rarely and are not set by an open market and so may also give a false measure of inflation. Prices that are subject to price control or subsidy could also be removed for the same reasons.

Table 1. CONSUMER PRICE INDEX.
(Base Period : Average Prices August 2010 = 100)

Group	All Items	Food and Non Alcoholic Beverages	Alcoholic Beverages and Tobacco	Clothing and Footwear	Housing, Water, Electricity, Gas and other Fuels	Furnishings, Household Equipment, and Maintenance	Health	Transport	Communication	Recreation and Culture	Education	Restaurants	Miscellaneous goods and services
<i>Weights</i>	1000	502	97	17	78	31	16	97	58	34	31	15	24
<i>Ave - 2011</i>	105.7	108.2	105.0	103.9	106.5	100.5	98.7	106.6	100.0	98.1	100.0	100.0	100.3
<i>Ave - 2012</i>	107.9	110.3	107.8	113.1	108.9	100.4	96.0	111.2	100.0	98.0	101.6	100.0	100.9
<i>Ave - 2013</i>	108.6	111.1	110.8	113.5	107.2	101.4	96.1	111.8	100.0	98.5	101.6	101.6	100.7
2013													
November	105.3	104.6	111.7	114.5	108.6	101.0	96.1	108.3	100.0	98.9	101.6	109.4	100.4
December	106.0	105.8	112.3	113.8	108.4	100.5	93.2	109.4	100.0	98.9	101.6	109.4	99.4
2014													
January	107.2	106.9	112.3	112.4	108.4	100.2	106.9	114.6	100.0	98.9	101.6	109.4	100.0
February	106.7	105.3	114.3	113.7	108.5	100.6	106.9	115.7	100.0	98.9	101.6	109.4	100.0
March	108.4	109.4	114.6	113.2	108.4	100.5	106.9	111.3	100.0	98.9	101.6	109.4	100.0
April	107.2	106.7	113.2	120.1	108.4	99.1	106.9	113.7	100.0	99.0	101.6	109.4	98.5
May	107.4	105.6	113.2	119.5	110.7	99.9	106.9	119.9	100.0	99.0	101.6	109.4	99.0
June	108.0	106.6	114.8	119.3	110.5	99.9	106.9	119.5	100.0	99.0	101.6	109.4	98.2
July	107.6	105.3	114.8	119.3	110.9	99.9	108.1	121.2	100.0	99.0	101.6	109.4	98.5
August	107.4	105.3	114.8	119.2	110.9	99.9	109.2	118.7	100.0	99.0	101.6	109.4	98.5
September	107.2	104.8	114.8	119.2	113.0	100.5	110.6	118.0	100.0	99.0	101.6	109.4	98.5
October	109.1	108.0	114.8	119.2	113.1	100.6	110.5	121.2	100.0	98.9	101.6	109.4	96.4
November (P)	109.2	108.3	114.8	119.2	113.2	100.4	110.5	120.1	100.0	98.9	101.6	109.4	96.3
Percentage Change (P)													
Nov 2014 over Oct 2014	0.1	0.3	0.0	0.0	0.1	-0.2	0.0	-0.9	0.0	0.0	0.0	0.0	-0.1
Nov 2014 over Nov 2013	3.7	3.5	2.8	4.1	4.2	-0.6	15.0	10.9	0.0	0.0	0.0	0.0	-4.1
ALL ITEMS UNDERLYING INDEX													
Group	All Items	Food and Non Alcoholic Beverages	Alcoholic Beverages and Tobacco	Clothing and Footwear	Housing, Water, Electricity, Gas and other Fuels	Furnishings, Household Equipment, and Maintenance	Health	Transport	Communication	Recreation and Culture	Education	Restaurants	Miscellaneous goods and services
<i>Weights</i>	480	348	<i>n.a.</i>	17	17	31	14	13	<i>n.a.</i>	2	<i>n.a.</i>	15	24
<i>Ave - 2011</i>	103.4	104.8		103.9	99.8	100.5	98.5	94.9		89.3		100.0	100.3
<i>Ave - 2012</i>	104.3	105.3		113.1	101.7	100.4	95.4	100.1		86.8		100.0	100.9
<i>Ave - 2013</i>	104.7	106.0		113.5	99.4	101.4	95.5	97.4		87.0		101.6	100.7
2013													
November	104.7	105.6		114.5	100.1	101.0	95.5	96.4		87.0		109.4	100.4
December	104.9	106.2		113.8	99.4	100.5	92.1	96.4		87.0		109.4	99.4
2014													
January	105.4	107.0		112.4	98.8	100.2	92.7	95.6		87.0		109.4	100.0
February	105.0	106.4		113.7	98.9	100.6	92.7	95.6		87.0		109.4	100.0
March	105.1	106.5		113.2	98.9	100.5	92.7	95.6		87.0		109.4	100.0
April	105.0	106.3		120.1	98.9	99.1	92.7	95.6		88.1		109.4	98.5
May	105.0	106.2		119.5	99.1	99.9	92.7	95.6		88.1		109.4	99.0
June	106.4	108.2		119.3	98.8	99.9	92.7	95.6		88.1		109.4	98.2
July	106.6	108.3		119.3	98.8	99.9	94.0	95.6		88.1		109.4	98.5
August	107.1	109.0		119.2	98.8	99.9	95.3	95.6		88.1		109.4	98.5
September	106.8	108.4		119.2	100.0	100.5	96.9	95.6		88.1		109.4	98.5
October	106.2	107.8		119.2	100.4	100.6	96.8	95.6		87.6		109.4	96.4
November (P)	106.1	107.7		119.2	101.0	100.4	96.8	95.6		87.6		109.4	96.3
Percentage Change (P)													
Nov 2014 over Oct 2014	-0.1	-0.1		0.0	0.6	-0.2	0.0	0.0		0.0		0.0	-0.1
Nov 2014 over Nov 2013	1.3	1.9		4.1	0.9	-0.5	1.4	-0.8		0.7		0.0	-4.1

Source : Samoa Bureau Statistics
(P): Provisional figures
Note: n.a. Not applicable

Commodities	Weight	Unit	2013			2014		
			Sep	Oct	Nov	Sep	Oct	Nov (P)
Health								
Paracetamol	3.7	20tablet	1.88	1.88	1.88	1.80	1.80	1.80
Magnesium Trisilicate	3.6	120mls	7.30	7.30	7.30	7.60	7.60	7.60
Cough Mixture	3.6	100mls	9.95	9.95	9.95	9.90	9.85	9.85
Hospital Charge	2.1	per night	5.00	5.00	5.00	10.00	10.00	10.00
Transport								
Petrol	39.1	ltr	3.17	3.08	3.04	3.19	3.15	3.06
Labour charge car repair	9.1	min crg	51.67	51.67	51.67	51.67	51.67	51.67
Air Fares Apia-Auckland-Apia	7.8	return	2111.15	1398.49	1121.10	1179.50	1773.60	1739.50
Air Fares Fagalii-Pago	7.8	return	380.00	380.00	380.00	395.00	395.00	395.00
Bus Fares Apia-Motootua Hosp	3.7	per trip	0.80	0.80	0.80	1.30	1.30	1.30
Bus Fares Apia-Malua	3.7	per trip	2.00	2.00	2.00	2.60	2.60	2.60
Bus Fares Apia-Falefa	3.7	per trip	3.20	3.20	3.20	3.70	3.70	3.70
Car Tyre 205/70R(14)	3.7	size 14	220.00	220.00	220.00	215.00	215.00	215.00
Taxi Fares PO-Motootua Hosp	3.3	per trip	3.50	3.50	3.50	4.80	4.80	4.80
Taxi Fares Po-Malua	3.3	per trip	26.10	26.10	26.10	31.30	31.30	31.30
Taxi Fares PO-Falefa	3.3	per trip	36.00	36.00	36.00	43.20	43.20	43.20
Diesel	2.8	ltr	3.19	3.19	3.15	3.13	3.14	3.06
Car Registration 1500-2000 cc	2.0	ann rate	290.00	290.00	290.00	290.00	290.00	290.00
Boat Fares Mulifanua-Salelologa	1.3	one way	12.00	12.00	12.00	12.00	12.00	12.00
Communication								
Telephone local call	23.6	1 min	0.06	0.06	0.06	0.06	0.06	0.06
Telephone NZ call	10.6	3 mins	2.55	2.55	2.55	2.55	2.55	2.55
Telephone USA call	10.6	3 mins	5.37	5.37	5.37	5.35	5.35	5.35
Telephone Rental	10.6	monthly	24.15	24.15	24.15	24.15	24.15	24.15
Internet Prepaid Rates (a)	2.6	30 mins	5.10	5.10	5.10	5.10	5.10	5.10
PO Box rental (small box)	0.2	ann rate	80.00	80.00	80.00	80.00	80.00	80.00
Recreation and Culture								
National Lotto (a)	23.6	ticket	7.00	7.00	7.00	7.00	7.00	7.00
Tattslotto	3.8	ticket	13.50	13.50	13.50	13.50	13.50	13.50
News Paper Samoa Observer	2.7	each	2.50	2.50	2.50	2.50	2.50	2.50
Education								
School Fees Primary	10.5	Yr 4	10.00	10.00	10.00	10.00	10.00	10.00
School Fees Secondary	8.1	Yr 10	50.00	50.00	50.00	50.00	50.00	50.00
School Fees Primary	7.6	Yr 8	20.00	20.00	20.00	20.00	20.00	20.00
School Fees (NUS registration)	5.1	tertiary	265.00	265.00	265.00	265.00	265.00	265.00
Restaurants								
Meal (Fish & Chips)	11.0	1 serve	8.00	8.00	9.00	9.00	9.00	9.00
Meal (Pinati)	3.7	1 serve	3.00	3.00	3.00	3.00	3.00	3.00
Miscellaneous goods and services								
Toilet soap	7.6	90g	1.11	1.16	1.13	1.09	1.04	1.04
Diapers (16kg & over)	7.2	24pkt	37.80	37.82	37.78	37.80	37.80	37.80
Toilet Paper	3.6	roll	0.95	0.90	0.90	0.90	0.90	0.90

Source : Samoa Bureau Statistics

(a) : New commodity from August 2010

(b) : Average price across all brands

(P) : Provisional figures

Table 3. IMPORTED GOODS COMPONENT OF THE CONSUMER PRICE INDEX
(Base Period : Average Prices August 2010 = 100)

Group	All Items	Food and Non Alcoholic Beverages	Alcoholic Beverages and Tobacco	Clothing and Footwear	Housing, Water, Electricity, Gas and other Fuels	Furnishings, Household Equipment and Maintenance	Health	Transport	Communication	Recreation and Culture	Education	Restaurants	Miscellaneous goods and services
Weights	424.8	272.0	17.1	10.9	17.5	22.7	12.8	46.8	n.a.	1.3	n.a.	n.a.	23.7
Ave - 2011	105.5	105.6	112.9	102.5	101.2	101.1	98.4	111.6		81.1			100.3
Ave - 2012	106.7	105.7	113.9	110.6	103.8	102.1	95.1	118.6		76.7			100.9
Ave - 2013	106.9	106.2	112.1	110.9	101.7	103.0	95.2	119.7		77.0			100.7
2013													
November	106.7	105.8	111.5	112.5	102.4	103.5	95.2	119.4		77.0			100.4
December	106.9	106.7	115.2	111.4	101.4	103.0	91.6	116.7		77.0			99.4
2014													
January	107.7	107.6	115.2	109.2	101.2	102.4	92.1	119.3		77.0			100.0
February	107.9	106.8	115.2	111.1	102.0	102.9	92.1	124.2		77.0			100.0
March	107.6	107.1	115.2	110.4	101.2	102.7	92.1	121.3		77.0			100.0
April	106.9	106.7	106.0	111.1	101.2	100.8	92.1	121.6		78.9			98.5
May	106.6	106.6	106.0	110.1	100.8	101.9	92.1	118.7		78.9			99.0
June	108.3	108.9	115.2	109.8	100.3	102.0	92.1	118.4		78.9			98.2
July	109.0	109.2	115.2	109.8	101.8	101.9	93.6	121.9		78.9			98.5
August	109.6	110.0	115.2	109.6	101.8	101.9	95.0	122.8		78.9			98.5
September	109.4	109.3	115.2	109.6	102.1	102.8	96.7	124.1		78.9			98.5
October	109.0	108.9	115.2	109.7	102.6	102.8	96.6	122.9		78.1			96.4
November (P)	108.4	108.6	115.2	109.6	102.7	102.5	96.6	119.7		78.1			96.3
Percentage Change (P)													
Nov 2014 over Oct 2014	-0.5	-0.3	0.0	-0.1	0.1	-0.3	0.0	-2.6		0.0			-0.1
Nov 2014 over Nov 2013	1.6	2.7	3.4	-2.5	0.3	-1.0	1.5	0.2		1.4			-4.1
IMPORTED ITEMS UNDERLYING INDEX													
Group	All Items	Food and Non Alcoholic Beverages	Alcoholic Beverages and Tobacco	Clothing and Footwear	Housing, Water, Electricity, Gas and other Fuels	Furnishings, Household Equipment and Maintenance	Health	Transport	Communication	Recreation and Culture	Education	Restaurants	Miscellaneous goods and services
Weights	362.8	272.0	n.a.	10.9	15.4	22.7	12.8	4.0	n.a.	1.3	n.a.	n.a.	23.7
Ave - 2011	104.3	105.6		102.5	99.4	101.1	98.4	109.2		81.1			100.3
Ave - 2012	104.9	105.7		110.6	101.4	102.1	95.1	122.0		76.7			100.9
Ave - 2013	105.0	106.2		110.9	98.9	103.0	95.2	113.2		77.0			100.7
2013													
November	104.8	105.8		112.5	99.2	103.5	95.2	109.7		77.0			100.4
December	105.2	106.7		111.4	98.5	103.0	91.6	109.7		77.0			99.4
2014													
January	105.8	107.6		109.2	97.9	102.4	92.1	107.2		77.0			100.0
February	105.3	106.8		111.1	97.9	102.9	92.1	107.2		77.0			100.0
March	105.4	107.1		110.4	97.9	102.7	92.1	107.2		77.0			100.0
April	105.0	106.7		111.1	97.9	100.8	92.1	107.1		78.9			98.5
May	105.0	106.6		110.1	98.1	101.9	92.1	107.2		78.9			99.0
June	106.6	108.9		109.8	97.8	102.0	92.1	107.2		78.9			98.2
July	106.9	109.2		109.8	98.9	101.9	93.6	107.2		78.9			98.5
August	107.6	110.0		109.6	98.9	101.9	95.0	107.2		78.9			98.5
September	107.2	109.3		109.6	99.1	102.8	96.7	107.1		78.9			98.5
October	106.8	108.9		109.7	99.6	102.8	96.6	107.2		78.1			96.4
November (P)	106.6	108.6		109.6	100.2	102.5	96.6	107.1		78.1			96.3
Percentage Change (P)													
Nov 2014 over Oct 2014	-0.2	-0.3		-0.1	0.6	-0.3	0.0	-0.1		0.0			-0.1
Nov 2014 over Nov 2013	1.7	2.7		-2.5	0.9	-1.0	1.5	-2.4		1.4			-4.1

Source : Samoa Bureau Statistics
(P); Provisional figures
Note: n.a. Not applicable

Table 4. LOCAL GOODS COMPONENT OF THE CONSUMER PRICE INDEX
(Base Period : Average Prices August 2010 = 100)

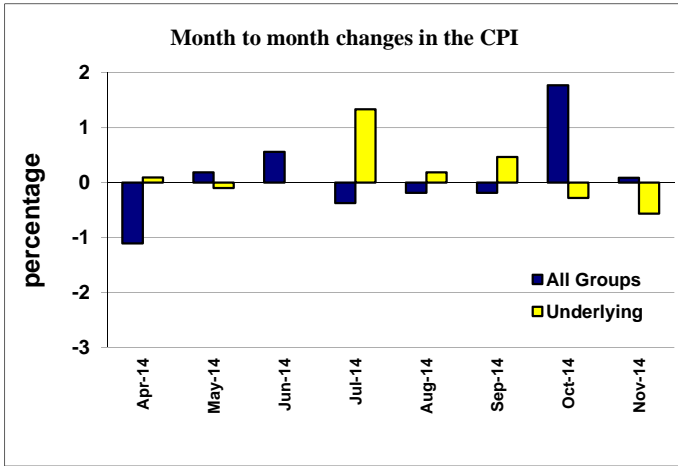
Group	All Items	Food and Non Alcoholic Beverages	Alcoholic Beverages and Tobacco	Clothing and Footwear	Housing, Water, Electricity, Gas and other Fuels	Furnishings, Household Equipment and Maintenance	Health	Transport	Communication	Recreation and Culture	Education	Restaurants	Miscellaneous goods and services
Weights	575.2	229.8	79.6	6.4	60.6	8.6	3.0	50.3	58.2	32.7	31.3	14.7	n.a.
Ave - 2011	105.9	111.2	103.3	106.4	108.0	98.9	100.0	101.8	100.0	98.7	100.0	100.0	
Ave - 2012	108.8	115.8	106.5	117.3	110.3	95.9	100.0	104.2	100.0	98.8	101.6	100.0	
Ave - 2013	109.8	116.9	110.5	117.9	108.8	97.1	100.0	104.4	100.0	99.4	101.6	101.6	
2013													
October	105.4	105.9	111.7	117.9	110.4	96.2	100.0	101.2	100.0	99.8	101.6	100.0	
November	104.2	103.1	111.7	117.9	110.4	94.2	100.0	98.0	100.0	99.8	101.6	109.4	
December	105.3	104.8	111.7	117.9	110.4	94.2	100.0	102.7	100.0	99.8	101.6	109.4	
2014													
January	106.8	106.0	111.7	117.9	110.4	94.5	170.0	110.2	100.0	99.8	101.6	109.4	
February	105.9	103.5	114.1	117.9	110.4	94.5	170.0	107.7	100.0	99.8	101.6	109.4	
March	108.9	112.1	114.5	117.9	110.4	94.5	170.0	102.0	100.0	99.8	101.6	109.4	
April	107.3	106.7	114.7	135.5	110.4	94.5	170.0	106.3	100.0	99.8	101.6	109.4	
May	108.0	104.4	114.7	135.5	113.5	94.5	170.0	121.0	100.0	99.8	101.6	109.4	
June	107.8	104.0	114.7	135.5	113.5	94.5	170.0	120.5	100.0	99.8	101.6	109.4	
July	106.6	100.8	114.7	135.5	113.5	94.5	170.0	120.7	100.0	99.8	101.6	109.4	
August	105.7	99.8	114.7	135.5	113.5	94.5	170.0	114.9	100.0	99.8	101.6	109.4	
September	105.7	99.6	114.7	135.5	116.2	94.5	170.0	112.3	100.0	99.8	101.6	109.4	
October	109.2	106.9	114.7	135.5	116.2	95.0	170.0	119.7	100.0	99.8	101.6	109.4	
November (P)	109.7	107.8	114.7	135.5	116.2	95.0	170.0	120.4	100.0	99.8	101.6	109.4	
Percentage Change (P)													
Nov 2014 over Oct 2014	0.4	0.9	0.0	0.0	0.0	-0.1	0.0	0.6	0.0	0.0	0.0	0.0	
Nov 2014 over Nov 2013	5.2	4.6	2.7	14.9	5.2	0.8	70.0	22.9	-0.1	0.0	0.0	0.0	
LOCAL ITEMS UNDERLYING INDEX													
Group	All Items	Food and Non Alcoholic Beverages	Alcoholic Beverages and Tobacco	Clothing and Footwear	Housing, Water, Electricity, Gas and other Fuels	Furnishings, Household Equipment and Maintenance	Health	Transport	Communication	Recreation and Culture	Education	Restaurants	Miscellaneous goods and services
Weights	117.4	75.5	n.a.	6.4	1.2	8.6	0.9	9.1	n.a.	1.0	n.a.	14.7	n.a.
Ave - 2011	100.7	102.0		106.4	105.3	98.9	100.0	88.6		100.0		100.0	
Ave - 2012	102.5	103.9		117.3	105.2	95.9	100.0	90.5		100.0		100.0	
Ave - 2013	103.8	105.5		117.9	105.9	97.1	100.0	90.5		100.0		101.6	
2013													
November	104.2	104.9		117.9	110.8	94.2	100.0	90.5		100.0		109.4	
December	104.1	104.6		117.9	110.8	94.2	100.0	90.5		100.0		109.4	
2014													
January	104.3	104.3		117.9	110.6	94.5	100.0	90.5		100.0		109.4	
February	104.3	104.3		117.9	111.6	94.5	100.0	90.5		100.0		109.4	
March	103.9	103.9		117.9	111.6	94.5	100.0	90.5		100.0		109.4	
April	105.3	105.3		135.5	111.6	94.5	100.0	90.5		100.0		109.4	
May	105.2	105.2		135.5	111.6	94.5	100.0	90.5		100.0		109.4	
June	105.7	105.7		135.5	111.6	94.5	100.0	90.5		100.0		109.4	
July	105.5	105.5		135.5	111.6	94.5	100.0	90.5		100.0		109.4	
August	105.7	105.7		135.5	111.6	94.5	100.0	90.5		100.0		109.4	
September	105.6	105.6		135.5	111.6	94.5	100.0	90.5		100.0		109.4	
October	104.5	104.5		135.5	111.6	95.0	100.0	90.5		100.0		109.4	
November (P)	104.8	104.8		135.5	111.5	95.0	100.0	90.5		100.0		109.4	
Percentage Change (P)													
Nov 2014 over Oct 2014	0.3	0.3		0.0	-0.1	0.0	0.0	0.0		0.0		0.0	
Nov 2014 over Nov 2013	0.6	-0.1		14.9	0.6	0.8	0.0	0.0		0.0		0.0	

Source : Samoa Bureau Statistics

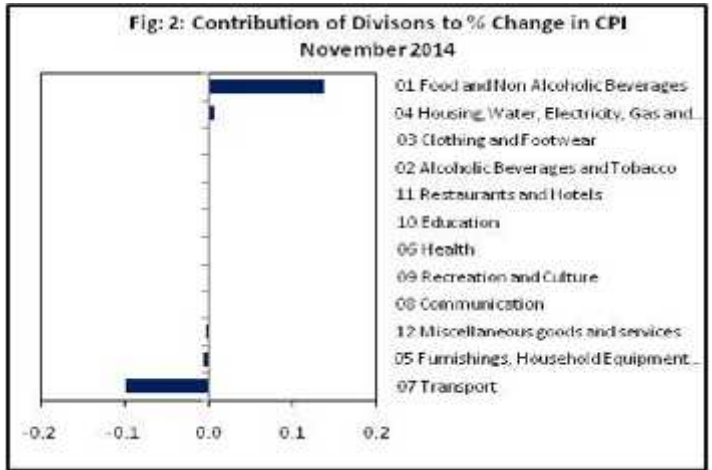
(P): Provisional figures

Note: n.a. Not applicable

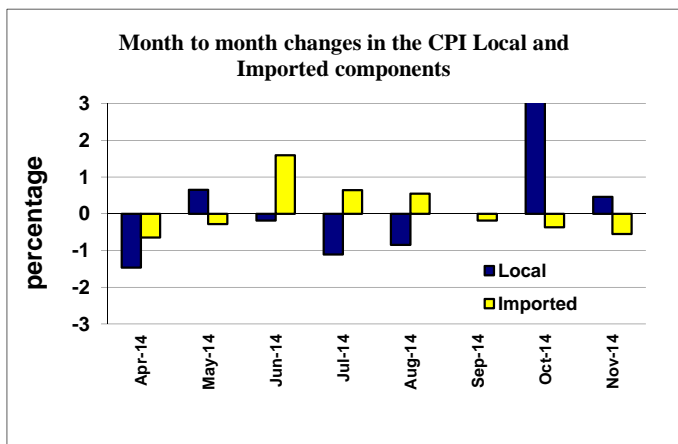
Graph.1



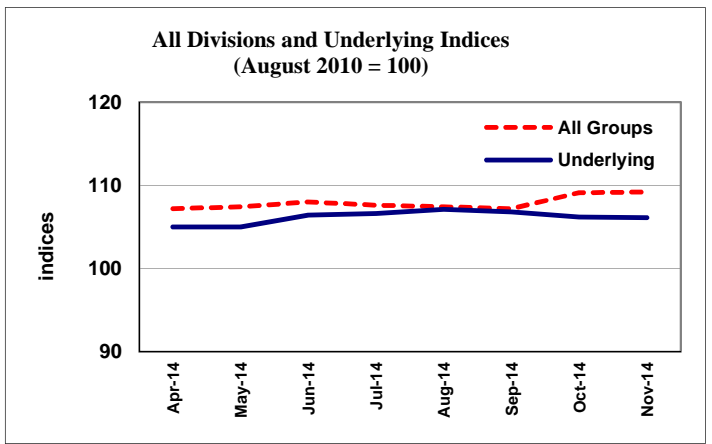
Graph.2



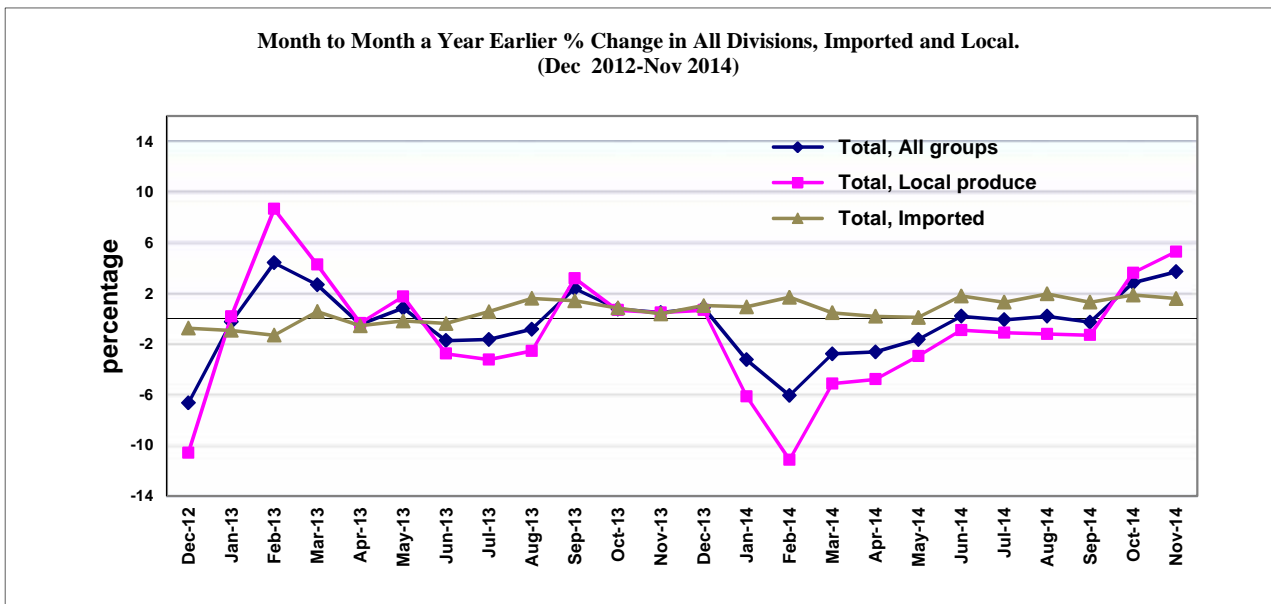
Graph.3



Graph.4



Graph 5



Source: Samoa Bureau of Statistics