

Please address all correspondence
To Government Statistician
In reply, please quote the file reference



File Ref: CPI 01/14

GOVERNMENT OF SAMOA

SAMOA BUREAU OF STATISTICS

CONSUMER PRICE INDEX January 2014

Key findings:

The Consumer Price Index for January 2014 increased by 1.1 percent compared from the previous month.

- Health index increased by 14.7 percent.
- Transport index also Increased by 4.8 percent.
- The Average Annual Inflation for the year ended January 2014 was 0.4 percent.

The CPI fell 3.2 percent from January 2013.

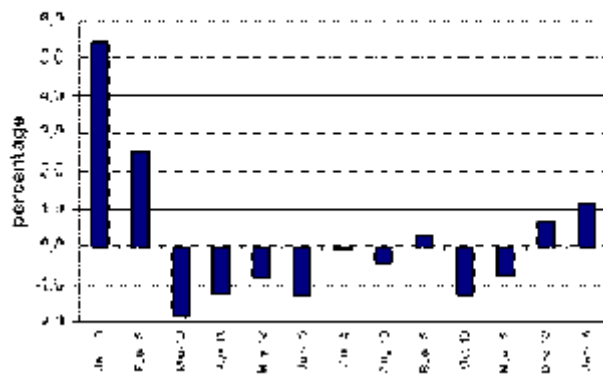
SUMMARY

The Consumer Price Index for January 2014 was 1.1 percent higher than December 2013, and was 3.2 percent lower than January 2013.

The increase of the Local Goods Component by 1.4 percent reflects higher prices for vegetables and health accommodation fee which were also the main contributors to the increase of 1.1 percent in the All Items Consumer Price Index.

The Imported Goods Component also recorded an increase of 0.8 percent from December 2013. Figure 1 shows the month to month percentage changes in the Consumer Price Index by all Divisions from January 2013 to January 2014.

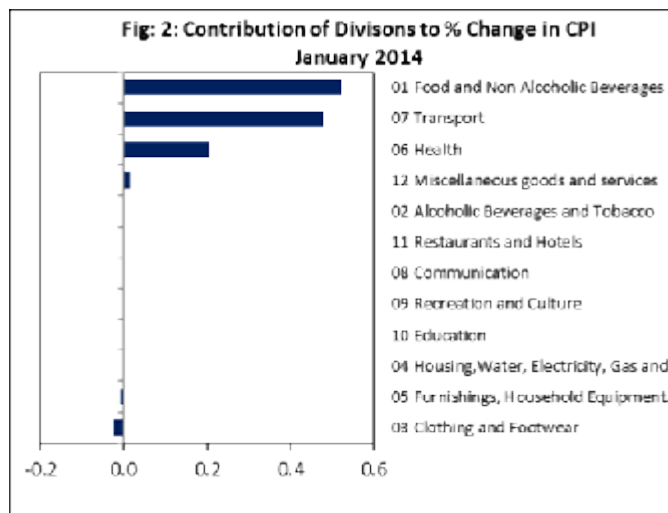
Fig 1: Current month over previous month change in the CPI by All Divisions (Jan 2013 - Jan 2014)



Source : Samoa Bureau of Statistics

Total All Divisions Contribution

Food and Non Alcoholic Beverages, Transport along with Health divisions were the main contributors to the overall increase of 1.1 percent in the All Division Consumer Price Index.



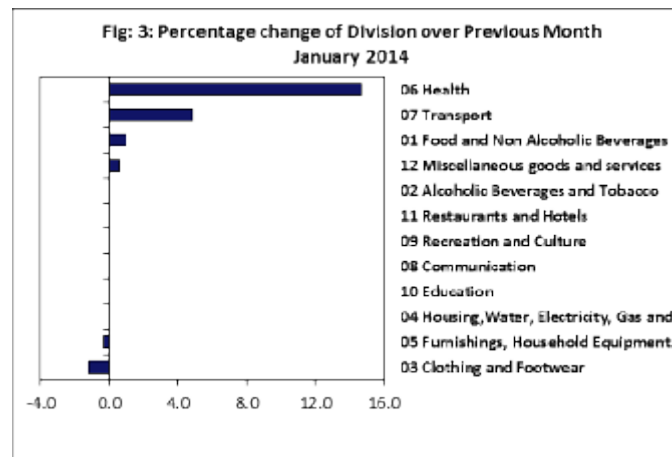
Source : Samoa Bureau of Statistics

Consumer Price Index (% Change)

The 1.1 percent increase in the Overall Index was mainly due to an increase of 14.7 percent in Health index. Increases were also recorded for the Transport with (4.8%), Food and Non Alcoholic Beverages with (1.0%) and Miscellaneous Goods and Services with (0.6%).

On the other hand, Clothing and Footwear and Furnishing, Household Equipment and Maintenance indices recorded decreases of 1.2 and 0.3 percent respectively.

No changes were recorded for the Alcoholic Beverages and Tobacco, Housing, Water, Electricity, Gas and other Fuels, Communication, Recreation and culture, Education and Restaurants indices. Graphically presented in Fig 3 is the January 2014 percentage change for all divisions from December 2013.



Source : Samoa Bureau of Statistics

Local Goods Component

The Local Goods Component of the Consumer Price Index registered an increase of 1.4 percent when compared to the previous month. This increase was mainly due to higher prices recorded for fresh fish (piece), chinese cabbage, pumpkin, tomatoes, cucumber, health accommodation fee and airline fare.

Imported Goods Component

Increases prices recorded for mutton flap and fuel (petrol) have resulted in the 0.8 percent increase in the Imported Good Component.

Health Index

An increase of 14.7 percent in the Health index was mainly due to higher prices recorded for health accommodation fee.

Transport Index

The 4.8 percent increase in the Transport index was result of the higher prices recorded for fuel (petrol) and airline fares (Apia-Auckland-Apia).

Food and Non Alcoholic Beverages Index

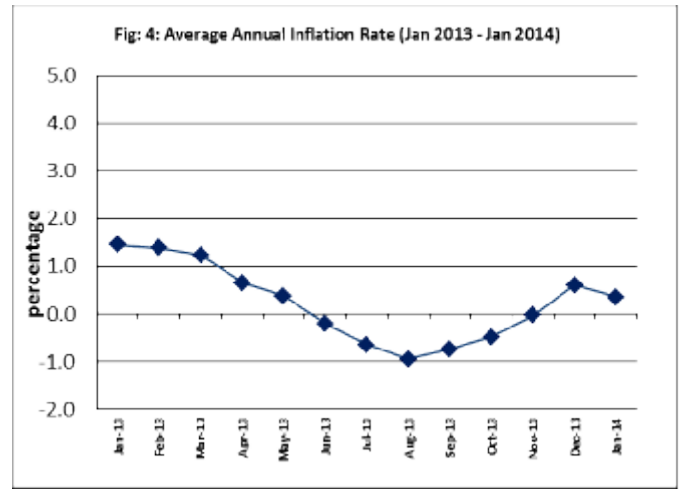
Higher prices recorded for mutton flap, fresh fish (piece), chinese cabbage, pumpkin, tomatoes, cucumber is reflected in the 1.0 percent increase in the Food and Non Alcoholic Beverages index.



compared to December 2013, and an increase of 0.6 percent when compared to January last year. The Imported Items Underlying Index registered an increase of 0.6 percent and the Local Items Underlying Index with 0.2 percent increase.

Inflation Rate

The average annual inflation rate for the year ended January 2014 was 0.4%. For the twelve months period ended January 2013 the inflation rate was 1.4 percent, therefore the average annual inflation rate declined by 1.0 percentage points over the year. Presented in Fig 4 is the Average annual inflation rates (January 2013 – January 2014).



Source : Samoa Bureau of Statistics

Miscellaneous Goods and Services Index

An increase of 0.6 percent in the Miscellaneous Good and Services index was result in the higher prices recorded for toilet soap.

Clothing and Footwear Index

The 1.2 percent decrease in the Clothing and Footwear index was mainly due to lower prices recorded for jandal and ie solosolo.

Furnishing, Household Equipment, and Maintenance Index

A decrease of 0.3 percent in the Furnishing, Household Equipment and Maintenance index was mainly due to lower prices recorded for kerosene stove.

Underlying Indices

The All Items Underlying Index for January 2014 registered an increase of 0.5 percent when

The attached Tables and Graphs provide the user with more detailed analysis.

Muagututi'a S Reupena.
ACTING GOVERNMENT STATISTICIAN

Date of release: 11th February 2014

The next Consumer Price Index will be released on 11th March 2014

Note: The Samoa Bureau of Statistics is introducing methodology improvement to the Consumer Price Index to more accurately reflect prices paid by households when specific products change or are no longer available.