

Please address all correspondence to the Government Statistician
 In reply, please quote the file reference



File Ref: IAS Q1/14

GOVERNMENT OF SAMOA

SAMOA BUREAU OF STATISTICS

International Arrival Statistics FIRST QUARTER 2014

HIGHLIGHTS OF THE QUARTER

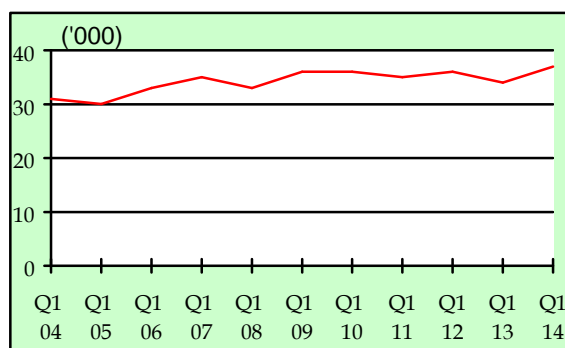
This quarter compared with first quarter 2013:

- Total arrivals (36,716) were up by 9 percent.
- Total visitors (25,462) were up by 7 percent.
- More visitors arrived from Australia (up by 327), New Zealand (up by 241), American Samoa (up by 86), and USA (up by 51).
- Samoa residents departed on more trips to New Zealand (up by 1,821) but fewer to American Samoa (down by 2,256), Australia (down 65) and USA (down by 29).
- Samoa residents departed on 14,100 trips, up by 12 percent.

Q1 2014	Number	Change from previous quarter	Change from previous year
All Arrivals	36,716	-14.6%	9.2%
All Visitors	25,462	-24.0%	6.7%

As usual, Air being the most preferred mode of travel to Samoa, accounting for 96.1 percent (35,301) of total arrivals, while those that arrived by Sea accounted for the remaining 3.9 percent (1,415).

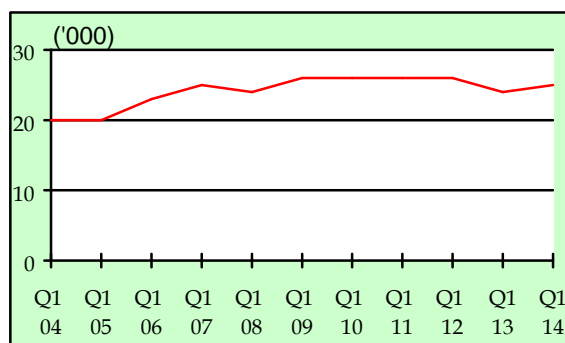
Fig. 1.1: 1st Quarter Total Arrivals, 2004 - 2014



1.2 TOTAL VISITORS

Total Visitors of 25,462 for the quarter under review reveals a decrease of 24.0 percent over the previous quarter, but an increase of 6.6 percent increase in comparison to the corresponding quarter of January – March 2013. (Refer Fig. 1.2).

Fig. 1.2: 1st Quarter Total Visitors, 2004 - 2014



OVERVIEW

1. ARRIVALS

1.1 TOTAL ARRIVALS

The total International Arrival Statistics documented during the reference period (table 1) reveals a decrease of 14.6 percent when compared to the previous quarter (October - December 2013) but an increase of 9.2 percent over the corresponding quarter of January – March 2013. (Refer Fig. 1.1).

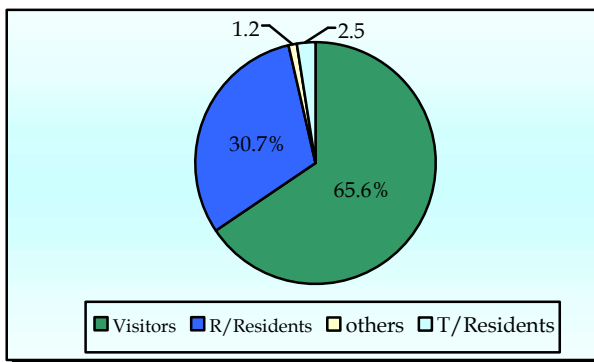
1.3 TOTAL ARRIVALS BY PURPOSE OF ENTRY

Visitors, including transit, made up the largest component of all arrivals with 34.8 percent (12,766) being males and 30.9 percent (11,331) being females.

Male and female returning residents made up 16.0 percent (5,879) and 14.6 (5,375) percent respectively of total arrivals. Temporary residents made up 1.4 percent (519) being males and 1.1 percent (411) being females. Other purposes of entry made up the remainder of 1.2 percent of total arrival. (Refer Fig. 1.3).

The majority of inbound travellers to Samoa during the reference period were aged between 20 years and 59 years.

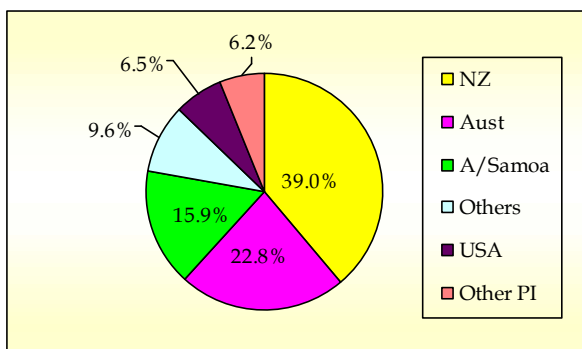
Fig. 1.3: Total Arrivals, by Purpose of Entry



1.4 VISITORS ARRIVALS BY COUNTRY OF USUAL RESIDENCE

New Zealand still remains as the leading country in visitors' arrival by country of usual residence (Table 3) accounting for 39.0 percent of total visitors with 9,927. Australia followed next with a distant 22.8 percent share (5,810) which is then trailed by American Samoa with 15.9 percent (4,049) while the United States of America anchored the principal source markets with a far-off share of 6.5 percent (1,654). (Refer Fig. 1.4).

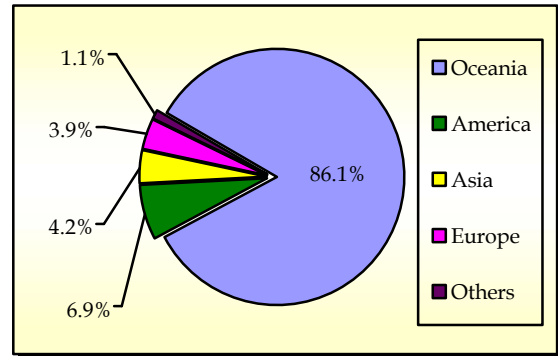
Fig. 1.4: Total Visitors, by Country of Usual Residence



1.5 VISITORS ARRIVALS BY REGION

The Oceanic region had the highest share of total visitors with 84.0 percent trailed by America and Asia with 6.9 percent and 4.2 percent respectively. The European region showed the lowest share with 3.9 percent. (Refer Fig. 1.5)

Fig 1.5: Total Visitors, by Region



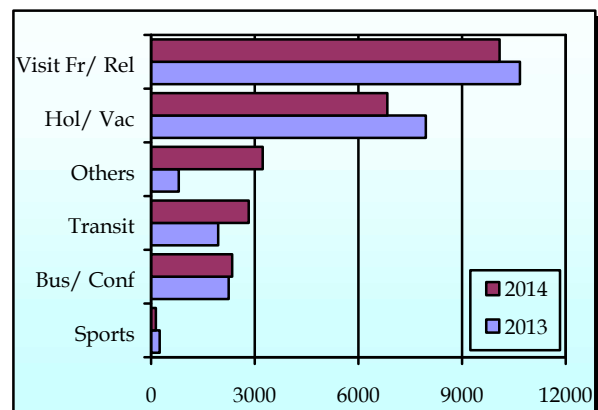
1.6 VISITORS BY PURPOSE OF VISIT

As illustrated in Table 4, New Zealand, Australia, American Samoa, and the United States of America constitute 84.2 percent of all visitors visiting Samoa while other countries round up the remaining 15.8 percent during the reference period.

Visitors that were here to visit friends/ relatives accounted for 39.6 percent of all visitors. 26.9 percent of all visitors entered for holiday/ vacation. Business and conference visitors made up 9.2 percent.

Transients bound for other destinations and those who were here for other purposes registered 11.1 and 4.2 percent respectively. Fig. 1.6 depicts total visitors by purpose of visit during the reference period compared to the first quarter of 2013.

Fig 1.6: Total Visitors, by Purpose of Visit



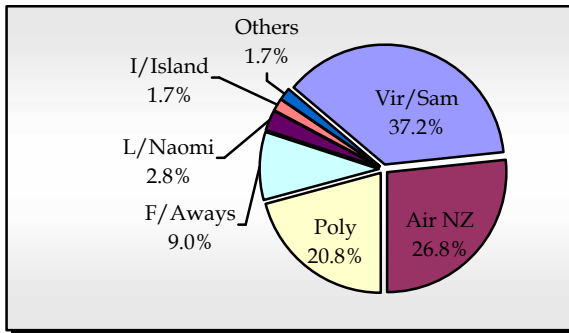
1.7 TOTAL VISITORS BY CARRIER

As tabulated in Table 5, Virgin Samoa (formerly known as Polynesian Blue) leads the way for arrivals by carriers' during the reference period with a 37.1 percent share (13,627 passengers) followed by Air New Zealand with a share of 26.7 percent (9,803 passengers).

Polynesian Airlines brought in 20.8 percent (7,647) of total arrivals while Fiji Airways (formerly known as Air Pacific) recorded a 9.0 percent share (3,298).

Fig. 1.7 illustrates total arrivals by carrier during the reference period.

Fig. 1.7: Total Arrivals, by Carrier



1.8 VISITORS DURATION AND PLACE OF STAY

The usual trend of visitor's duration of stay in Samoa (Table 6) is between 7 days and 30 days, as revealed in Fig 1.8.

69.7 percent (15,780) of total visitors reported staying in private accommodations or with families/relatives, while only 28.1 percent (6,652) stayed in hotels/ motels. The remaining 2.2 percent (504) did not reveal their place of stay during the reference period. (Refer Fig. 1.9).

Fig. 1.8: Total Visitors, by Duration of Stay

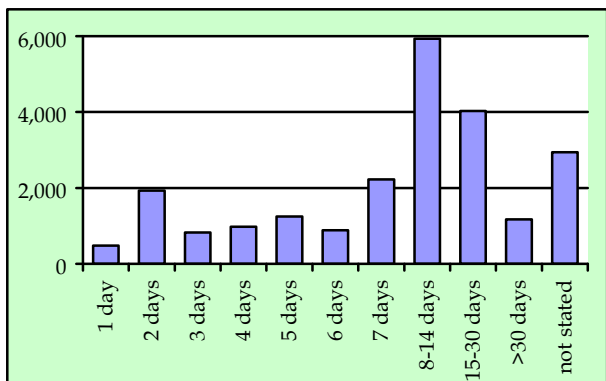
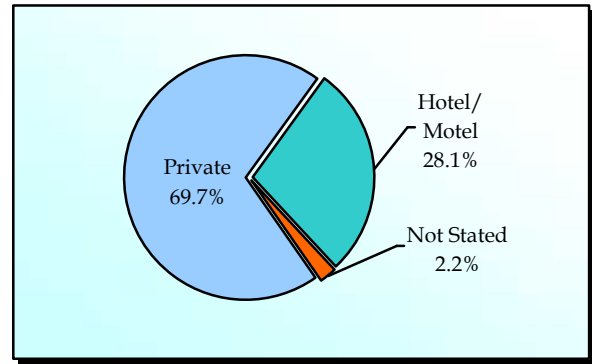


Fig. 1.9: Total Visitors, by Place of Stay



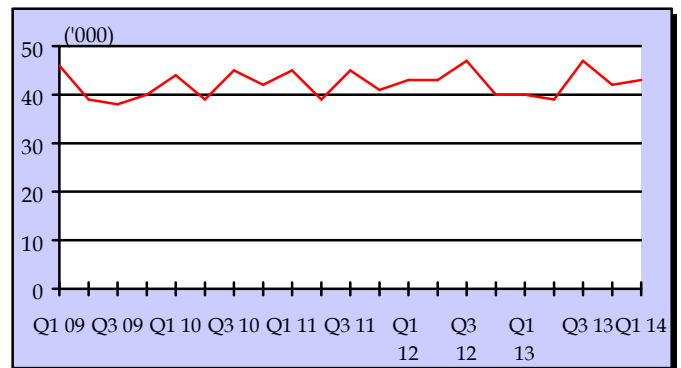
2. DEPARTURES

2.1 TOTAL DEPARTURES

The total International Departure Statistics recorded during the reference period (table 1) revealed an increase of 1.2 percent when compared to the previous quarter (October - December 2013) as well as an increase of 7.4 percent over the corresponding quarter of January - March 2013. (Refer Fig. 2.1).

Furthermore, Air was the most preferred mode of travel away from Samoa, accounting for 96.2 percent (41,142) of total departures, while those that departed by sea accounted for the remaining 3.8 percent (1,624).

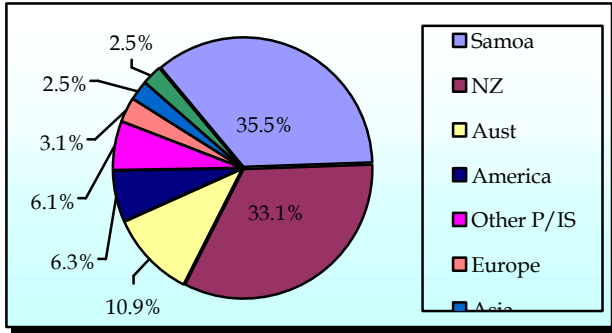
Fig. 2.1: Quarterly Total Departures, 2009 - 2014



2.2 TOTAL DEPARTURE BY NATIONALITY

Departures from Samoan, New Zealand, Australian, and the United States of American nationals (Table 7) accounted for 85.8 percent (36,702) of total departures. Fig. 2.2 provides a more detailed graphical analysis of total departure by nationality during the reference period.

Fig. 2.2: Total Departures, by Nationality



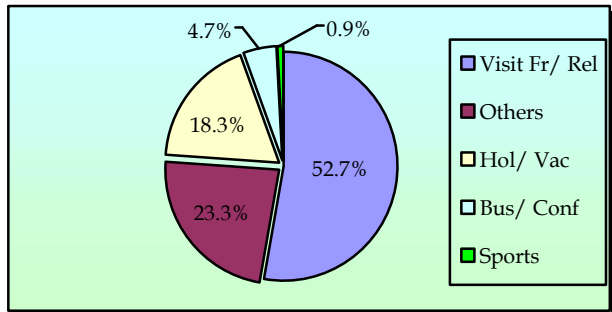
2.3 PURPOSE OF TRAVEL ABROAD

During the reference period, a total of 14,135 (Table 8) Samoa citizens left our shores on overseas trips. Of this total, 56.0 percent (7,919) were males and the remaining 44.0 percent (6,216) were females.

Visiting friends/ relatives abroad made up the largest component of all Samoa citizens travelling abroad accounting for 52.7 percent (7,449) followed by those that travelled overseas for Holiday/ Vacation with 18.3 percent (2,590).

Those that travelled for Business/ Conference reported 4.7 percent (669) while Sporting activities made up the remainder of departing Samoa citizens with only 0.9 percent (134). This is graphically illustrated in Fig. 2.3.

Fig. 2.3: Purpose of Travel Abroad



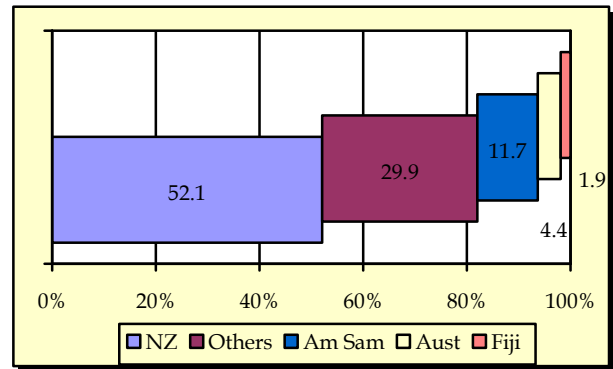
2.4 COUNTRY OF STAY ABROAD

The majority of Samoa citizens leaving our shores traveled to New Zealand as indicated by 52.1 percent (7,367) in Table 9 while 11.7 percent (1,660) of departing Samoa citizens traveled to American Samoa.

Australia made up 4.4 percent (616) while Fiji made up 1.9 percent (267) of Samoa citizens travelling to overseas countries.

Fig. 2.4 portrays a graphical impression of the country of stay abroad by Samoa Citizens during the reference period.

Fig. 2.4: Country of Stay Abroad



2.6 DEPARTURE BY OCCUPATION

As illustrated in Table 10, the majority of Samoa citizens departing our shores were Students with 15.0 percent (6,400) followed by professionals with 10.9 percent (4,661) then by technicians with 9.0 (3,850). A more comprehensive graphical analysis of departures by occupation for Samoa citizens is exhibited in Fig. 2.5.

Fig. 2.5: Departures by Occupation

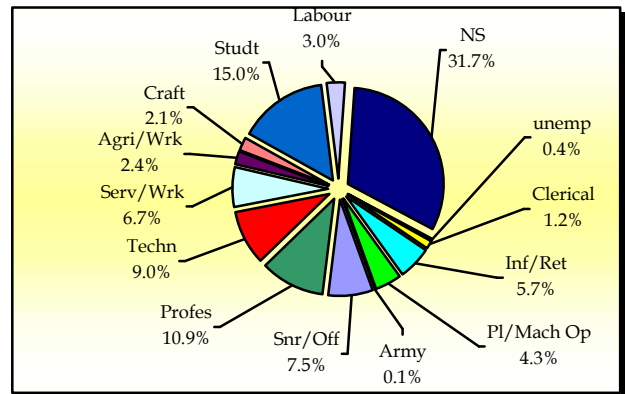
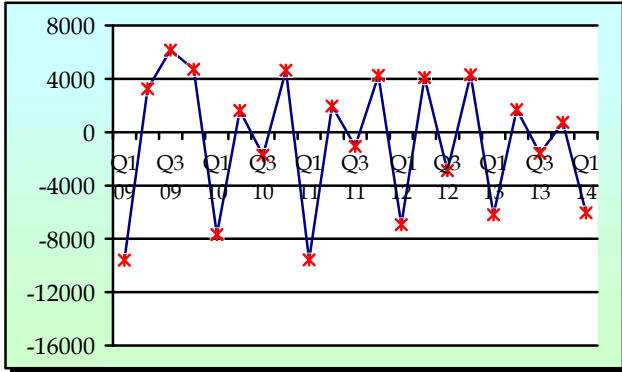


Table 10 further revealed that the majority of Samoa citizens departing our shores have either completed or are currently attending Tertiary Education level, yielding 33.6 percent.

3. NET MIGRATION

During the reference period, net migration stood at -6,054 (Table 1) implying that there were more outgoing (departures) than in-coming travelers (arrival). This shows a decrease of 2.3 percent when compared to the same period of 2013 where net migration stood at -6,197.

Fig.3.1: Quarterly Net Migration, 2009 - 2014



Detailed information for the reference period is attached in Tables 1 – 10 and the appendix shows longer time series.

BACKGROUND

The sourced documents for the compilation of International Arrival Statistics were the immigration arrival and departure card forms. These forms are completed by all incoming and outgoing travelers at the three local points of entry namely (1) Apia wharf (2) Faleolo and (3) Fagalii international airports.

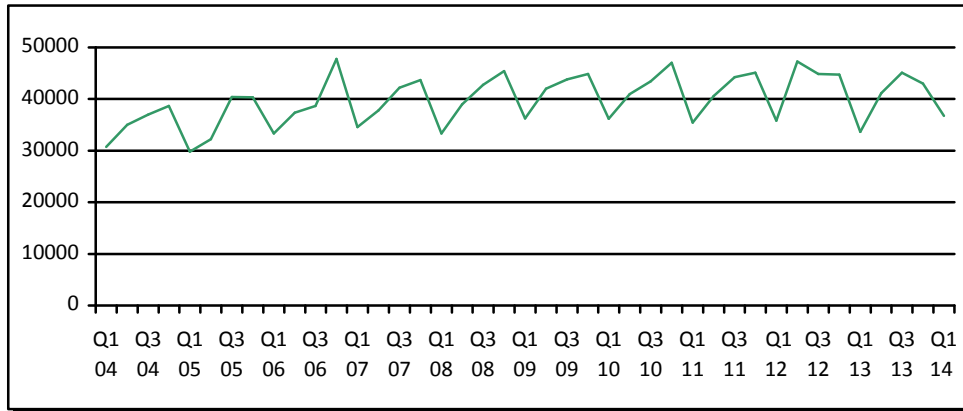
International arrival statistics are compiled on a monthly, quarterly and annual basis. These reports can also be extracted from our website: www.sbs.gov.ws

The migration report for the second quarter of 2014 will be released on 1st October 2014.

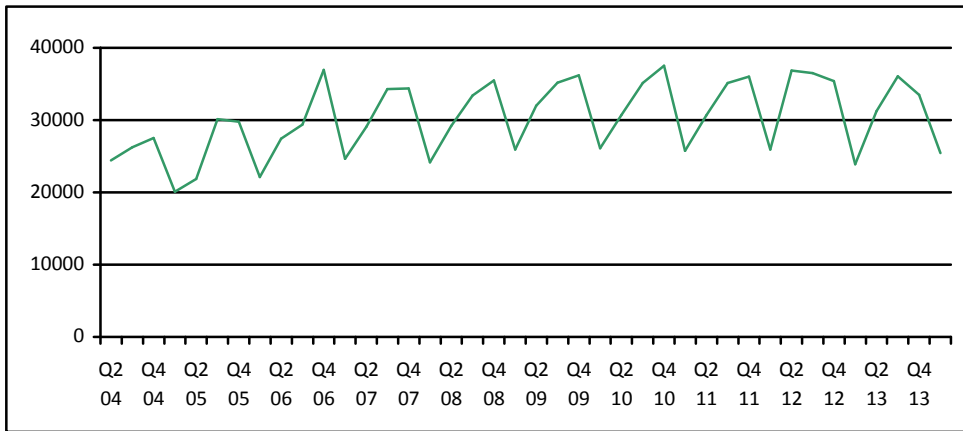
Muagututia Sefuiva Reupena
GOVERNMENT STATISTICIAN

APPENDIX

Graph 1: Quarterly Total Arrivals, 1st quarter 2004 – 1st quarter 2014



Graph 2: Quarterly Total Visitors, 1st quarter 2004 – 1st quarter 2014



Graph 3: Visitors Percentage Change over previous quarter, 1st quarter 2004 – 1st quarter 2014

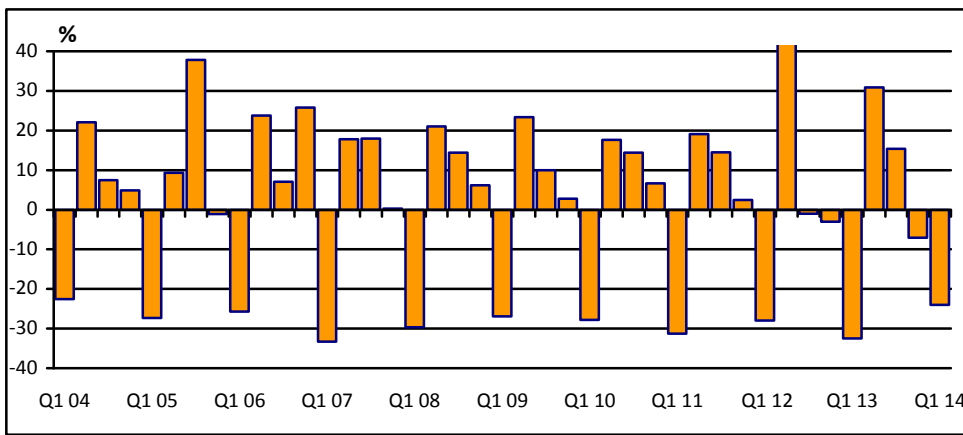


Table 1: Quarterly Arrival and Departure by Mode of Travel and Net Migration, 2004- 2014.

Period	Visitors Arrivals			Total Arrivals			Total Departures			Net
	Air	Sea	Total	Air	Sea	Total	Air	Sea	Total	Migration
2004	93,946	4,209	98,155	129,517	11,864	141,381	131,277	12,303	143,580	-2,199
2005	98,544	3,263	101,807	132,200	10,557	142,757	135,008	10,936	145,944	-3,187
2006	112,411	3,471	115,882	147,807	9,349	157,156	147,991	9,489	157,480	-324
2007	118,653	3,699	122,352	150,584	7,631	158,215	158,099	8,578	166,677	-8,458
2008	118,420	3,743	122,163	151,883	8,628	160,511	161,482	9,908	171,390	-10,879
2009	127,325	1,940	129,265	161,816	5,095	166,911	156,319	6,069	162,388	4,523
2010	126,970	2,530	129,500	162,052	5,539	167,591	164,426	6,326	170,752	-3,161
2011	124,706	2,898	127,604	159,660	5,738	165,398	163,605	6,216	169,821	-4,423
2012	131,945	2,749	134,694	167,211	5,509	172,720	167,842	6,297	174,139	-1,419
2013	122,171	2,502	124,673	157,542	5,335	162,877	162,333	5,885	168,218	-5,341
2,009										
1st Quarter	25,406	534	25,940	35,092	1,143	36,235	44,266	1,570	45,836	-9,601
2nd Quarter	31,575	427	32,002	40,381	1,650	42,031	36,599	2,175	38,774	3,257
3rd Quarter	34,664	526	35,190	42,526	1,253	43,779	36,436	1,190	37,626	6,153
4th Quarter	35,680	453	36,133	43,817	1,049	44,866	39,018	1,134	40,152	4,714
2010										
1st Quarter	25,662	463	26,125	35,293	919	36,212	42,563	1,335	43,898	-7,686
2nd Quarter	30,040	677	30,717	39,257	1,685	40,942	37,383	1,933	39,316	1,626
3rd Quarter	34,546	602	35,148	42,065	1,374	43,439	43,804	1,381	45,185	-1,746
4th Quarter	36,722	788	37,510	45,437	1,561	46,998	40,676	1,677	42,353	4,645
2011										
1st Quarter	24,972	794	25,766	34,010	1,440	35,450	43,290	1,737	45,027	-9,577
2nd Quarter	30,092	590	30,682	39,208	1,399	40,607	37,148	1,509	38,657	1,950
3rd Quarter	34,478	666	35,144	42,889	1,355	44,244	43,784	1,516	45,300	-1,056
4th Quarter	35,164	848	36,012	43,553	1,544	45,097	39,383	1,454	40,837	4,260
2012										
1st Quarter	25,439	497	25,936	34,835	995	35,830	41,389	1,377	42,766	-6,936
2nd Quarter	35,886	985	36,871	45,168	2,085	47,253	40,819	2,346	43,165	4,088
3rd Quarter	35,890	607	36,497	43,867	1,017	44,884	46,659	1,101	47,760	-2,876
4th Quarter	34,730	660	35,390	43,341	1,412	44,753	38,975	1,473	40,448	4,305
2013										
1st Quarter	23,293	580	23,873	32,484	1,140	33,624	38,219	1,602	39,821	-6,197
2nd Quarter	30,594	651	31,245	39,785	1,365	41,150	37,728	1,719	39,447	1,703
3rd Quarter ¹	35,463	593	36,056	43,688	1,421	45,109	45,349	1,349	46,698	-1,589
4th Quarter	32,821	678	33,499	41,585	1,409	42,994	41,037	1,215	42,252	742
2014										
1st Quarter	24,911	551	25,462	35,301	1,415	36,716	41,142	1,624	42,770	-6,054

Source: Ministry of the Prime Minister and Cabinet - Immigration Division, Ministry for Revenue - Customs Division, and Samoa Bureau of Statistics.

1: Provisional figures

Table 2: Arrivals by Age, Purpose of Entry and Gender, First Quarter 2014 ¹

AGE	Purpose of Visit																	
	TOTAL			Visitors			Returning Residents			Transit			Temporary Resident			Others		
	TOTAL	Male	Female	Total	Male	Female	Total	Male	Female	Total	Male	Female	Total	Male	Female	Total	Male	Female
TOTAL	36,716	19,415	17,301	21,271	10,930	10,341	11,254	5,879	5,375	2,826	1,836	990	930	519	411	435	251	184
0 - 4	1,809	917	892	1,083	536	547	594	310	284	91	53	38	33	14	19	8	4	4
5 - 9	1,488	760	728	823	422	401	559	271	288	82	51	31	20	14	6	4	2	2
10 - 14	1,534	763	771	821	419	402	582	274	308	87	48	39	28	15	13	16	7	9
15 - 19	2,151	1,024	1,127	1,169	527	642	754	354	400	162	103	59	39	26	13	27	14	13
20 - 24	3,057	1,472	1,585	1,709	740	969	924	483	441	273	174	99	110	55	55	41	20	21
25 - 29	3,125	1,640	1,485	1,782	836	946	905	512	393	282	192	90	103	63	40	53	37	16
30 - 34	2,816	1,435	1,381	1,643	770	873	795	416	379	264	186	78	86	47	39	28	16	12
35 - 39	2,785	1,538	1,247	1,643	879	764	815	450	365	232	154	78	65	37	28	30	18	12
40 - 44	3,121	1,750	1,371	1,754	945	809	938	508	430	298	213	85	80	50	30	51	34	17
45 - 49	3,194	1,738	1,456	1,910	1,010	900	906	504	402	262	159	103	78	40	38	38	25	13
50 - 54	3,329	1,802	1,527	1,981	1,069	912	948	485	463	286	191	95	76	38	38	38	19	19
55 - 59	2,891	1,606	1,285	1,728	982	746	872	456	416	178	106	72	72	42	30	41	20	21
60 - 64	2,212	1,204	1,008	1,333	724	609	629	325	304	153	96	57	66	38	28	31	21	10
65 - 69	1,579	906	673	944	545	399	483	269	214	93	61	32	45	25	20	14	6	8
70 - 74	895	496	399	544	321	223	279	134	145	48	29	19	18	10	8	6	2	4
75 +	730	364	366	404	205	199	271	128	143	35	20	15	11	5	6	9	6	3
% Distribution ²	100.0	52.9	47.1	57.9	29.8	28.2	30.7	16.0	14.6	7.7	5.0	2.7	2.5	1.4	1.1	1.2	0.7	0.5

Source: Ministry of the Prime Minister and Cabinet - Immigration Division, Ministry for Revenue - Customs Division, and Samoa Bureau of Statistics.

1: Provisional figures

2: Figures are subject to rounding errors

Table 3: Visitors Arrivals by Country of Usual Residence and Mode of Travel, First Quarter 2014 ¹

Country of Usual Residence	Mode of Travel		TOTAL	Percentage ²
	Air	Sea		
OCEANIA	20,879	497	21,376	84.0
American Samoa	3,920	129	4,049	15.9
Fiji	663	4	667	2.6
Cook Island	45	0	45	0.2
Other Pacific Is	657	221	878	3.4
New Zealand	9,847	80	9,927	39.0
Australia	5,747	63	5,810	22.8
EUROPE	979	8	987	3.9
United Kingdom	270	1	271	1.1
Scandinavia	83	1	84	0.3
Benelux	13	0	13	0.1
Germany	323	5	328	1.3
Other Europe	290	1	291	1.1
AMERICA	1,714	42	1,756	6.9
U.S.A	1,615	39	1,654	6.5
Canada	99	3	102	0.4
ASIA	1,064	1	1,065	4.2
Japan	127	0	127	0.5
China	379	0	379	1.5
Other Asia	536	1	537	2.1
Korea	22	0	22	0.1
OTHERS	158	3	161	0.6
NOT STATED	117	0	117	0.5
TOTAL	24,911	551	25,462	100%
PERCENTAGE DISTRIBUTION	97.8	2.2	100.0%	

Source: Ministry of the Prime Minister and Cabinet - Immigration Division, Ministry for Revenue - Customs Division, and Samoa Bureau of Statistics.

1: Provisional figures.

2: Figures are subject to rounding errors

- Note:** (i) Visitors refer to all person visiting Samoa other than returning residents and also expatriates who are employed and living in Samoa (**include transit**).
- (ii) Visitors also include Samoan citizens whose country of usual residence are country abroad.
- (iii) **Scandinavia**- refers to countries of Norway, Sweden, Finland and Denmark.
- (iv) **Benelux:** - refers to countries of Belgium, Netherlands and Luxembourg.
- (v) **Exclude Cruise Liner Passengers.**

Table 4: Total Visitors by Usual Residence and Purpose of Visit, First Quarter 2014 ¹

Usual Residence	Purpose of Visit								
	TOTAL	% ²	Holiday/ Vacation	Business/ Conference	Visit Friends/ Relatives	Sports	Transit	Others	Not Stated
TOTAL	25,462		6,838	2,345	10,085	138	2,826	1,065	2,165
American Samoa	4,049	15.9	538	268	1,319	26	828	199	871
Fiji	667	2.6	56	210	103	3	115	92	88
Cook Island	45	0.2	10	7	14	1	7	2	4
Other Pacific Is	878	3.4	54	85	142	7	325	121	144
New Zealand	9,927	39.0	2,753	923	4,876	63	531	301	480
Australia	5,810	22.8	1,877	439	2,800	21	234	184	255
United Kingdom	271	1.1	152	43	30	1	27	9	9
Scandinavia	84	0.3	67	1	1	0	4	6	5
Benelux	13	0.1	9	0	1	0	1	0	2
Germany	328	1.3	269	7	28	1	10	7	6
Other Europe	291	1.1	196	13	45	1	12	10	14
U.S.A.	1,654	6.5	533	164	531	10	175	92	149
Canada	102	0.4	40	8	33	0	8	5	8
Japan	127	0.5	34	42	17	0	15	6	13
China	379	1.5	55	57	31	0	183	6	47
Other Asia	537	2.1	90	51	61	2	280	16	37
Other Countries	161	0.6	86	18	30	0	17	3	7
Korea	22	0.5	3	6	6	0	5	1	1
Not Stated	117	2.9	16	3	17	2	49	5	25
Percentage Distribution ²	100.0		26.9	9.2	39.6	0.5	11.1	4.2	8.5

Source: Ministry of the Prime Minister and Cabinet - Immigration Division, Ministry for Revenue - Customs Division and Samoa Bureau of Statistics.

Note : Total visitors include transit.

: Sports was re-introduced again in the Purpose of Visit Category as of August 2008.

1: Provisional figures

2: Figures are subject to rounding errors

Table 5: Total Arrivals by Carrier and Purpose of Entry, First Quarter 2014 ¹

Carrier	TOTAL	Purpose of Entry				
		Returning Residents	% ²	Total Visitors	% ²	
TOTAL	36,716	100%	11,254	30.7	25,462	69.3
AIR	35,301	96.1	10,390	28.3	24,911	67.8
Virgin Samoa ³	13,627	37.1	4,328	11.8	9,299	25.3
Polynesian	7,647	20.8	2,296	6.3	5,351	14.6
Inter Island	612	1.7	142	0.4	470	1.3
Air New Zealand	9,803	26.7	2,829	7.7	6,974	19.0
Fiji Airways ⁴	3,298	9.0	786	2.1	2,512	6.8
Other Air Carrier	314	0.9	9	0.0	305	0.8
SEA	1,415	3.6	864	2.4	551	1.5
Lady Naomi	1,015	2.8	775	2.1	240	0.7
Yacht	3	0.0	0	0.0	3	0.0
Other Sea Carrier	397	0.8	89	0.2	308	0.8

Source: Ministry of the Prime Minister and Cabinet - Immigration Division, Ministry for Revenue - Customs Division and Samoa Bureau of Statistics.

Note: Total visitors include transit.

- 1: Provisional figures
- 2: Figures are subject to rounding errors
- 3: Polynesian Blue is now called Virgin Samoa
- 4: Air Pacific is now called Fiji Airways

Table 6: Visitors by Duration of Stay and Place of Stay, First Quarter 2014 ¹

Duration of Stay	Place of Stay			
	TOTAL	Hotel/Motel	Private	Not Stated
TOTAL	22,636	6,352	15,780	504
1day	483	203	252	28
2days	1,929	982	912	35
3days	824	386	430	8
4days	974	444	511	19
5days	1,247	588	638	21
6days	882	532	341	9
7days	2,224	887	1,304	33
8-14days	5,930	1,505	4,342	83
15-30days	4,029	413	3,536	80
31-60days	546	108	421	17
61-90days	238	13	220	5
91-180days	187	12	172	3
181-365days	203	23	173	7
Not Stated	2,940	256	2,528	156
Percentage Distribution	100.0	28.1	69.7	2.2

Source: Ministry of the Prime Minister and Cabinet - Immigration Division,
Ministry for Revenue - Customs Division and Samoa Bureau of Statistics.

Note: Visitors here, exclude transit.

1: Provisional figures

Table 7: Departures by Nationality, Citizenship and Gender, First Quarter 2014 ¹

Nationality	TOTAL			Samoa Citizen			Temporary Residents			Visitors			Other Citizens			
	TOTAL	Male	Female	Total	Male	Female	Total	Male	Female	Total	Male	Female	Total	Male	Female	
TOTAL	42,770	% ²	22,716	20,054	14,135	7,919	6,216	928	515	413	26,961	13,824	13,137	746	458	288
Samoa	15,167	35.5	8,348	6,819	12,047	6,796	5,251	247	139	108	2,821	1,386	1,435	52	27	25
American Samoa	1,307	3.1	653	654	335	173	162	27	13	14	922	456	466	23	11	12
Fiji	632	1.5	366	266	49	25	24	45	23	22	508	299	209	30	19	11
Cook Island	57	0.1	34	23	3	2	1	4	1	3	48	30	18	2	1	1
Other Pacific Is	594	1.4	388	206	58	35	23	26	19	7	468	298	170	42	36	6
New Zealand	14,178	33.1	6,995	7,183	969	519	450	253	122	131	12,672	6,198	6,474	284	156	128
Australia	4,660	10.9	2,390	2,270	214	107	107	131	76	55	4,253	2,170	2,083	62	37	25
United Kingdom	343	0.8	194	149	11	6	5	20	16	4	306	168	138	6	4	2
Scandinavia	90	0.2	39	51	3	0	3	1	1	0	83	37	46	3	1	2
Benelux	71	0.2	45	26	11	6	5	4	2	2	55	36	19	1	1	0
Germany	345	0.8	189	156	15	13	2	4	0	4	326	176	150	0	0	0
Other Europe	467	1.1	258	209	6	0	6	9	3	6	447	252	195	5	3	2
United States	2,697	6.3	1,404	1,293	233	116	117	87	58	29	2,312	1,192	1,120	65	38	27
Canada	119	0.3	66	53	0	0	0	4	3	1	111	60	51	4	3	1
Japan	137	0.3	94	43	4	4	0	11	5	6	120	83	37	2	2	0
China	598	1.4	437	161	30	27	3	14	9	5	475	339	136	79	62	17
Other Asia	309	0.7	185	124	4	4	0	6	2	4	294	174	120	5	5	0
Others	506	1.2	351	155	29	19	10	16	13	3	391	274	117	70	45	25
Korea	50	0.1	35	15	4	3	1	1	0	1	41	28	13	4	4	0
Not Stated	443	1.0	245	198	110	64	46	18	10	8	308	168	140	7	3	4
% Distribution ²	100.0		53.1	46.9	33.0	18.5	27.4	2.2	1.2	1.0	63.0	32.3	30.7	1.7	1.1	0.7

Source: Ministry of the Prime Minister and Cabinet - Immigration Division, Ministry for Revenue - Customs Division and Samoa Bureau of Statistics.

1: Provisional figures

2: Figures are subject to rounding errors

Table 8: Departures by Purpose of Travel and Gender (Samoa-citizen-only), First Quarter 2014 ¹

Purpose of Travel	Samoa Citizen			
	TOTAL	% ²	Male	Female
TOTAL	14,135		7,919	6,216
Holiday/ Vacation	2,590	18.3	1,451	1,139
Visit Friends/ Relatives	7,449	52.7	4,037	3,412
Business/Conference	669	4.7	421	248
Sporting/Activities	134	0.9	113	21
Others	1,024	7.2	581	443
Not Stated	2,269	16.1	1,316	953
% Distribution ²	100		56.0	44.0

Source: Ministry of the Prime Minister and Cabinet - Immigration Division,
Ministry for Revenue - Customs Division and Samoa Bureau of Statistics.

1: Provisional figures

2: Figures are subject to rounding errors

Table 9: Departures by Place of Stay Abroad and Gender (Samoa-citizen-only), First Quarter 2014 ¹

Place of Stay Abroad	TOTAL	Gender		
		Male	Female	
TOTAL	14,135	% ²	7,919	6,216
American Samoa	1,660	11.7	921	739
Fiji	267	1.9	132	135
Cook Island	19	0.1	9	10
Other Pacific Is	111	0.8	63	48
New Zealand	7,367	52.1	4,069	3,298
Australia	616	4.4	365	251
United Kingdom	7	0.0	5	2
Scandinavia	15	0.1	12	3
Benelux	6	0.0	4	2
Germany	9	0.1	5	4
Other Europe	26	0.2	16	10
United States	236	1.7	127	109
Canada	4	0.0	1	3
Japan	16	0.1	8	8
Other Asia	26	0.2	13	13
Others	16	0.1	9	7
China	8	0.1	6	2
Korea	2	0.0	0	2
Not Stated	3,724	26.3	2,154	1,570

Source: Ministry of the Prime Minister and Cabinet - Immigration Division, Ministry of Revenue - Customs Division and Samoa Bureau of Statistics.

1: Provisional figures

2: Figures are subject to rounding errors

Table 10: Departures by Occupation, Education and Gender, First Quarter 2014¹

OCCUPATION	TOTAL			Primary			Secondary			Tertiary			Kindy & None			Not Stated			
	TOTAL	Male	Female	Total	Male	Female	Total	Male	Female	Total	Male	Female	Total	Male	Female	Total	Male	Female	
TOTAL	42,770	%²	22,716	20,054	11,575	6,387	5,188	11,816	6,436	5,380	14,389	7,331	7,058	1,490	769	721	3,500	1,793	1,707
Army Airforce	61	0.1	44	17	12	9	3	11	4	7	35	28	7	0	0	0	3	3	0
Senior Official	3,226	7.5	2,008	1,218	581	375	206	640	387	253	1,825	1,138	687	3	2	1	177	106	71
Professional	4,661	10.9	2,298	2,363	610	323	287	683	364	319	2,989	1,424	1,565	0	0	0	379	187	192
Technician	3,850	9.0	2,104	1,746	721	387	334	869	476	393	2,120	1,158	962	0	0	0	140	83	57
Clerical	519	1.2	194	325	72	32	40	160	61	99	229	81	148	0	0	0	58	20	38
Services workers	2,851	6.7	1,075	1,776	595	248	347	989	348	641	972	377	595	2	1	1	293	101	192
Agricultural work	1,016	2.4	934	82	276	258	18	454	432	22	204	170	34	3	1	2	79	73	6
Craft/tradework	880	2.1	748	132	188	166	22	375	328	47	241	198	43	0	0	0	76	56	20
Plant/machinery	1,842	4.3	1,454	388	415	339	76	810	631	179	447	365	82	5	4	1	165	115	50
Labours	1,293	3.0	595	698	283	164	119	551	257	294	284	111	173	1	0	1	174	63	111
Students	6,400	15.0	2,976	3,424	2,405	1,208	1,197	1,643	786	857	1,653	632	1,021	164	86	78	535	264	271
Infant/retired	2,417	5.7	1,300	1,117	602	331	271	540	285	255	512	283	229	321	167	154	442	234	208
Unemployed	183	0.4	89	94	49	28	21	66	33	33	46	13	33	3	2	1	19	13	6
Not Stated	13,571	31.7	6,897	6,674	4,766	2,519	2,247	4,025	2,044	1,981	2,832	1,353	1,479	988	506	482	960	475	485

Source: Ministry of the Prime Minister and Cabinet - Immigration Division, Ministry for Revenue - Customs Division and Samoa Bureau of Statistics

1: Provisional figures