



GOVERNMENT OF SAMOA

## SAMOA BUREAU OF STATISTICS

### **IMPORT PRICE INDEX - September 2014 quarter** **(Base Period: Quarter 1 2009 = 100.0)**

Issue No. 17

The Import Price Index (MPI) measures changes in the cost, insurance, and freight (CIF) prices of imports of merchandise into Samoa. It is a fixed weight index with Quarter 1 2009 = 100.0 and is calculated on a quarterly basis using the International Harmonized System of Trade Classification (HS). The items included in the index were selected on the basis of their importance to the total import.

The scope of the MPI relates to the following sections of the International Harmonized System of Trade Classification (HS): 1. Live Animals: Animal Products, 2. Vegetable Products, 3. Animal or Vegetable fats and oils, 4. Food and Beverages and 5. Mineral Products. The index represents 50 percent of total Imports.

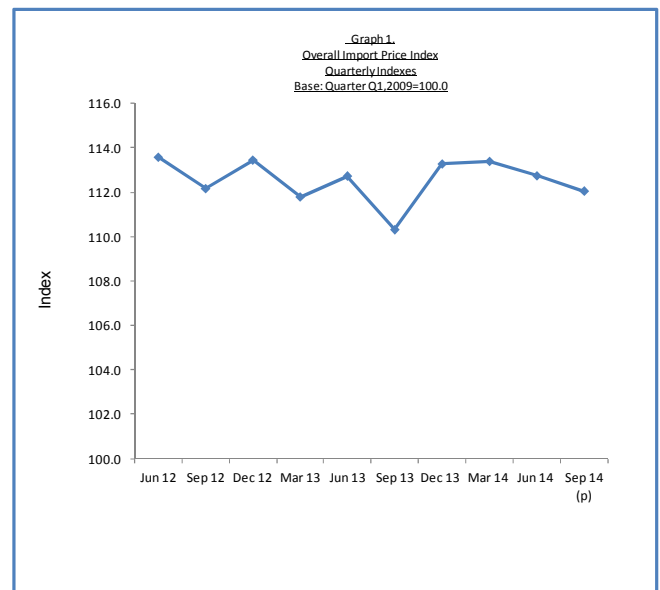
#### **Key findings**

- Import price index in the September 2014 quarter fell 0.6 percent when compared to the June 2014 quarter
- Vegetable products prices led this fall; down 6.1 percent.

#### **Overview**

The import price index for the September 2014 quarter showed overall decreased 0.6 percent when compared to the June 2014 quarter. In comparison with the September 2013 quarter, the current import prices increased 1.6 percent.

The four quarters ending September 2014 increased 0.7 percent in the overall import price compared to the four quarters ending September 2013. See table 1 and graph 1



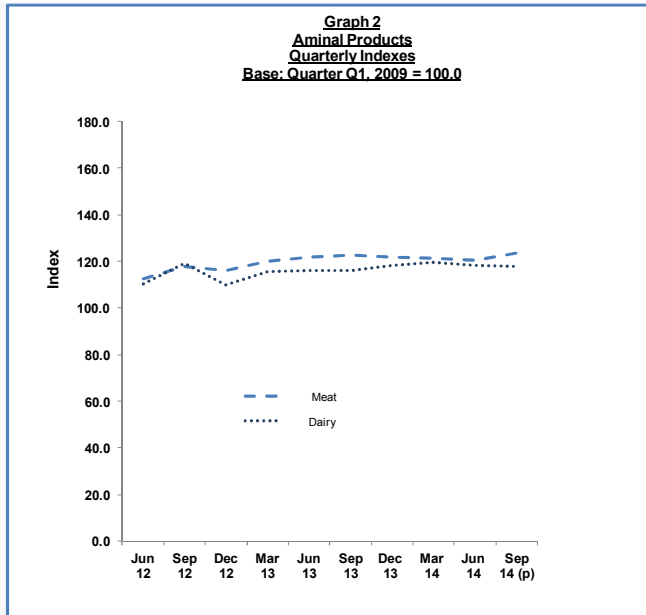
Source: Samoa Bureau of Statistics

#### **HS Section 1: Live Animals; Animal Products prices rise 1.7%**

Live Animals and Animal Products prices increased 1.7 percent in the September 2014 quarter, following a 1 percent fall in the June 2014 quarter. The rise was influenced by higher prices for chicken (leg quarter, drum stick whole) (up 6.8 percent). When compared to the September 2013 quarter, the current prices for

live animals and animal products increased 0.9 percent.

In the four quarters ending September 2014, live animals and animal products prices increased 2 percent when compared to the four quarters ending September 2013. See tables 1&2 and graph 2.

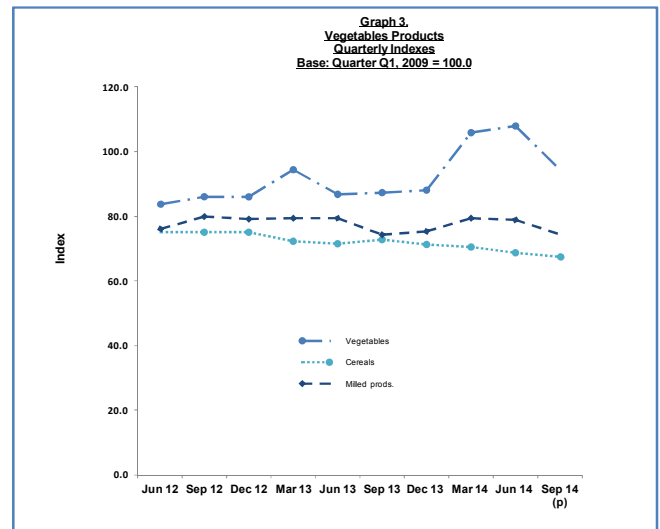


Source: Samoa Bureau of Statistics

### **HS Section 2: Vegetable Products prices fall 6.1%**

Vegetable Products prices in the September 2014 quarter was 6.1 percent and 0.5 percent lower than the June 2014 quarter and the September 2013 quarter respectively. This fall was influenced by lower prices for vegetables (down 12.8 percent), milled products (down 5.6 percent) and cereals (down 1.4 percent).

Reviewing the four quarters ending September 2014 over the four quarters ending September 2013, the current price for vegetable products decreased 0.2 percent. See tables 1&2 and graph 3.

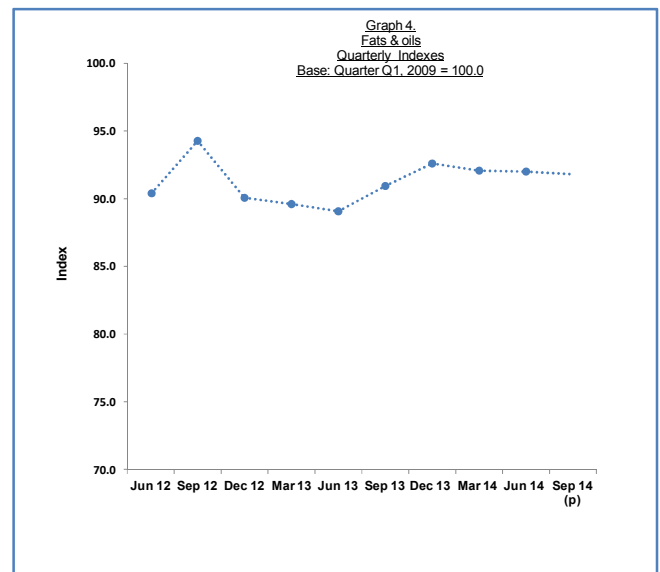


Source: Samoa Bureau of Statistics

### **HS Section 3: Animal or Vegetable fats & oils prices fall 0.3%**

Animal or Vegetable fats and oils prices fell 0.3 percent in the September 2014 quarter. The current fall was influenced by lower prices for vegetable oils (down 1 percent) whereas the prices for soya bean oils remained unchanged. When compared to the September 2013 quarter, the current prices for animal or vegetable fats and oils increased 0.9 percent.

The overall price for animal or vegetable fats and oils in the four quarters ending September 2014 was 2.4 percent higher than the four quarters ending September 2013. See tables 1&2 and graph 4

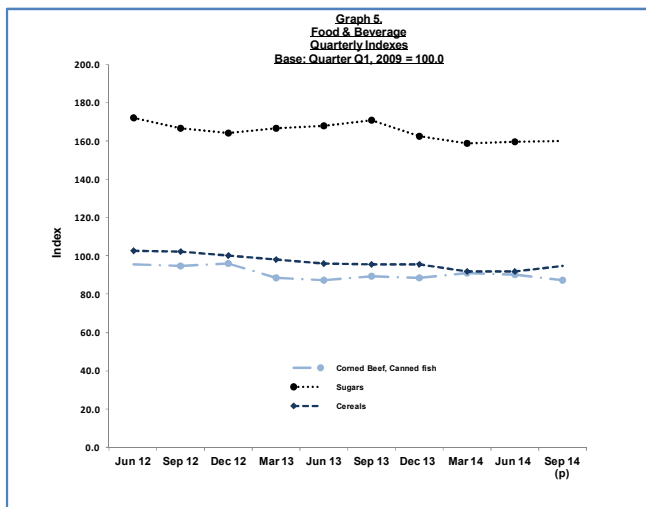


Source: Samoa Bureau of Statistics

**HS Section 4: Food and Beverages prices fall 0.1%**

Food and Beverages prices fell 0.1 percent in the September 2014 quarter, following a 0.3 percent fall in the June 2014 quarter. The fall in food and beverages prices was influenced by corned beef (down 4.9 percent) and canned fish (down 1.6 percent).

In comparing the four quarters ending September 2014 over the four quarters ending September 2013, the overall price for food and beverages decreased 3.1 percent. See tables 1&2 and graph 5.

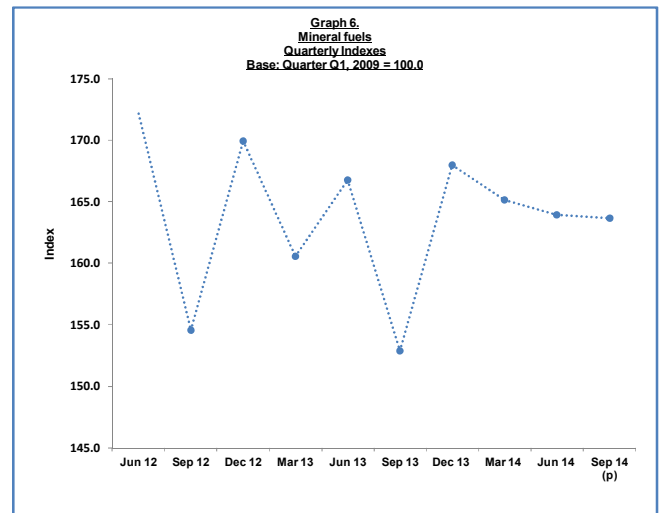


Source: Samoa Bureau of Statistics

**HS Section 5: Mineral Products prices fall 0.2%**

Mineral products prices fell 0.2 percent in the September 2014 quarter. This fall was mainly driven by lower prices of kerosene (down 0.5 percent) in the quarter under review whereas the prices for diesel and petrol remained unchanged. In comparison with September 2013 quarter, the current prices of mineral products increased 7.1 percent.

The overall price for mineral products in the four quarters ending September 2014 was 1.6 percent higher than the price of the four quarters ending September 2013. See tables 1&2 and graph 6.



Source: Samoa Bureau of Statistics

*Note: Because of recent difficulties in obtaining information from importers, a portion of the index is imputed based on information from other importers.*

If you would like more information about the Import Price Index for September 2014 quarter, please contact the Economics Division of the Samoa Bureau of Statistics at:

**SAMOA BUREAU OF STATISTICS**

*Economic Statistics Division  
FMFM II Building, Level 1  
P O Box 1151  
Apia, Samoa*

*Phone: (685) 62014/62022  
Fax: (685) 24675  
E-mail: infostats@sbs.gov.ws*

The MPI for the December 2014 quarter will be ready on 30<sup>th</sup> January 2015

Muagututi'a Sefuiva Reupena.  
**GOVERNMENT STATISTICIAN.**

**IMPORT PRICE INDEX**  
Base: Quarter Q1, 2009 = 100.0

**Table 1**

CODE	DESCRIPTION	Weight	2012			2013				2014			% Change	
			Jun 12	Sep 12	Dec 12	Mar 13	Jun 13	Sep 13	Dec 13	Mar 14	Jun 14	Sep 14 (p)	Sep-14 / Jun -14	Sep-14 / Sep-13
<b>I</b>	<b>ANIMAL PRODUCTS</b>	<b>100</b>	<b>111.8</b>	<b>118.1</b>	<b>114.3</b>	<b>118.6</b>	<b>120.2</b>	<b>120.8</b>	<b>120.9</b>	<b>121.0</b>	<b>119.8</b>	<b>121.9</b>	<b>1.7</b>	<b>0.9</b>
02	Meat	71.2	112.4	117.7	116.1	119.9	121.9	122.8	121.9	121.5	120.5	123.5	2.5	0.6
04	Dairy	28.8	110.3	119.0	109.8	115.6	115.8	116.0	118.4	119.7	118.1	117.8	-0.3	1.5
<b>II.</b>	<b>VEGETABLE PRODUCTS</b>	<b>100</b>	<b>77.0</b>	<b>79.4</b>	<b>78.9</b>	<b>79.7</b>	<b>78.0</b>	<b>76.0</b>	<b>76.2</b>	<b>81.0</b>	<b>80.5</b>	<b>75.6</b>	<b>-6.1</b>	<b>-0.5</b>
07	Vegetables	17.0	83.8	85.9	85.9	94.4	86.8	87.1	88.0	105.7	107.9	94.2	-12.8	8.2
10	Cereals	31.7	74.9	75.0	75.0	72.1	71.2	72.6	71.2	70.4	68.6	67.6	-1.4	-6.9
11	Milled prods.	51.3	76.1	80.0	79.1	79.4	79.3	74.4	75.3	79.3	78.8	74.4	-5.6	0.1
<b>III.</b>	<b>FATS &amp; OILS</b>	<b>100</b>	<b>90.4</b>	<b>94.3</b>	<b>90.1</b>	<b>89.6</b>	<b>89.1</b>	<b>91.0</b>	<b>92.7</b>	<b>92.1</b>	<b>92.0</b>	<b>91.8</b>	<b>-0.3</b>	<b>0.9</b>
15	Fats & oils	100.0	90.4	94.3	90.1	89.6	89.1	91.0	92.7	92.1	92.0	91.8	-0.3	0.9
<b>IV.</b>	<b>FOOD &amp; BEVERAGE</b>	<b>100</b>	<b>116.4</b>	<b>114.5</b>	<b>114.0</b>	<b>110.4</b>	<b>109.6</b>	<b>110.9</b>	<b>108.7</b>	<b>107.7</b>	<b>107.4</b>	<b>107.3</b>	<b>-0.1</b>	<b>-3.3</b>
16	Corned Beef, Canned fish	43.6	95.6	94.6	96.3	88.6	87.5	89.2	88.7	91.1	90.0	87.5	-2.8	-1.9
17	Sugars	24.0	172.4	166.6	164.4	166.8	168.0	171.0	162.8	159.1	159.8	160.2	0.2	-6.3
19	Cereals	32.4	103.0	102.5	100.4	98.1	96.1	95.7	95.6	92.1	91.8	94.7	3.1	-1.0
<b>V.</b>	<b>MINERAL PRODUCTS</b>	<b>100</b>	<b>172.2</b>	<b>154.5</b>	<b>170.0</b>	<b>160.5</b>	<b>166.8</b>	<b>152.9</b>	<b>168.0</b>	<b>165.1</b>	<b>163.9</b>	<b>163.7</b>	<b>-0.2</b>	<b>7.1</b>
27	Mineral fuels	100	172.2	154.5	170.0	160.5	166.8	152.9	168.0	165.1	163.9	163.7	-0.2	7.1
<b>Total, All groups</b>		<b>500</b>	<b>113.6</b>	<b>112.2</b>	<b>113.4</b>	<b>111.8</b>	<b>112.7</b>	<b>110.3</b>	<b>113.3</b>	<b>113.4</b>	<b>112.7</b>	<b>112.1</b>	<b>-0.6</b>	<b>1.6</b>

Source: Samoa Bureau of Statistics

Revised

(P) Provisional figures

**IMPORT PRICE INDEX**

**Base: Quarter Q1, 2009 = 100.0**

**Import Price Indexes for Major Component**

<b>Table 2.</b>		<b>2012</b>			<b>2013</b>				<b>2014</b>		
	Weight	Jun 2012	Sep 2012	Dec 2012	Mar 2013	Jun 2013	Sep 2013	Dec 2013	Mar 2014	Jun 2014	Sep 2014(P)
<b>I. ANIMAL PRODUCTS</b>											
<b>02 Meat</b>	<b>100.0</b>										
0204 Sheep	33.7	167.2	171.1	166.9	168.0	175.5	184.4	183.3	186.0	192.8	190.6
0207 Poultry	66.3	84.6	90.5	90.3	95.4	94.7	91.4	90.7	88.7	83.8	89.5
<b>04 Dairy</b>	<b>100.0</b>										
0401 Milk	42.0	112.2	111.8	114.9	120.6	118.3	118.0	120.6	116.4	115.0	117.8
0402 Milk, conc.	17.9	120.5	112.9	116.1	122.4	119.6	121.2	127.1	137.8	138.5	143.1
0405 Butter	24.1	101.0	89.7	90.5	90.7	92.5	90.7	91.7	97.0	93.8	84.1
0407 Eggs	16.0	107.9	188.7	118.2	132.5	140.1	143.0	142.9	142.2	140.0	140.3
<b>II. VEGETABLE PRODUCTS</b>											
<b>07 Vegetables</b>	<b>100.0</b>										
0701 Potatoes	56.5	100.7	86.8	89.5	104.0	104.6	101.5	102.7	110.9	111.4	104.7
0703 Onions	43.5	61.7	84.8	81.2	81.9	63.6	68.3	68.8	99.1	103.4	80.4
<b>10 Cereals</b>	<b>100.0</b>										
1006 Rice	100.0	74.9	75.0	75.0	72.1	71.2	72.6	71.2	70.4	68.6	67.6
<b>11 Milled prods.</b>	<b>100.0</b>										
1101 Wheat	100.0	76.1	80.0	79.1	79.4	79.3	74.4	75.3	79.3	78.8	74.4
<b>III. FATS &amp; OILS</b>											
<b>15 Fats &amp; oils</b>	<b>100.0</b>										
1507 Soya-bean	27.7	100.0	100.0	100.0	100.0	100.0	100.0	100.0	100.0	100.0	100.0
1516 Hydrogenated	36.7	79.9	91.0	80.0	79.5	76.2	81.6	80.4	82.3	80.1	79.3
1517 Margarine	35.7	93.7	93.3	92.7	91.9	93.8	93.5	99.6	96.1	98.1	98.3
<b>IV. FOOD, BEVERAGES&amp; TOBACCO</b>											
<b>16 Meat, fish</b>	<b>100.0</b>										
1602 Corned Beef	31.0	105.6	109.0	113.1	105.8	109.8	102.2	104.1	105.3	105.3	100.2
1604 Canned fish	69.0	91.1	88.1	88.7	80.9	77.4	83.3	81.9	84.7	83.2	81.8
<b>17 Sugars</b>	<b>100.0</b>										
1701 Cane, beet	100.0	172.4	166.6	164.4	166.8	168.0	171.0	162.8	159.1	159.8	160.2
<b>19 Cereals</b>	<b>100.0</b>										
1902 Pasta	56.0	111.6	109.9	107.8	103.4	100.7	100.7	100.1	95.6	95.5	100.7
1905 Bread	44.0	92.0	93.2	91.0	91.3	90.2	89.4	89.9	87.6	87.2	87.1
<b>V. MINERAL PRODUCTS</b>											
<b>27 Mineral fuels</b>	<b>100.0</b>										
2710 Petroleum oils	100.0	172.2	154.5	170.0	160.5	166.8	152.9	168.0	165.1	163.9	163.7

Source: Samoa Bureau of Statistics

Revised

(P) Provisional figures